



27 December 2017

Year: 2017

Week: 51

In This Issue:

- Key messages.
- Syndromic indicators at a glance.
- Data summary.
- Indicators by syndrome.
- Cold/flu.
- Fever.
- Cough.
- Difficulty Breathing.
- Sore throat.
- Diarrhoea.
- Vomiting.
- Eye problems.
- Introduction to charts.
- Notes and further information.
- Acknowledgements.

Key messages

Data to: 26 December 2017

During week 51 there were increases in NHS 111 cold/flu calls across all age groups, but particularly in the 45-64 years age group (figures 2 & 2a) in line with reports of influenza circulating in the community. There were also notable increases in cough and sore throat calls (figures 4 & 4a, 6 & 6a) as well as difficulty breathing (figures 5 & 5a).

A Cold Watch System operates in England from 1 November to 31 March each year. As part of the Public Health England Cold Weather Plan for England the PHE Real-time Syndromic Surveillance Team will be monitoring the impact of cold weather on syndromic surveillance data during this period.

Cold weather alert level (current reporting week): **Level 1 Winter Preparedness & action / 2 Alert & readiness**
<http://www.metoffice.gov.uk/weather/uk/coldweatheralert/>

Syndromic indicators at a glance:

Indicator	Trend	Level *
Cold/flu	increasing	similar to baseline levels
Fever	increasing	below baseline levels
Cough	increasing	similar to baseline levels
Difficulty breathing	increasing	below baseline levels
Sore throat	increasing	above baseline levels
Diarrhoea	decreasing	below baseline levels
Vomiting	decreasing	below baseline levels
Eye problems	increasing	similar to baseline levels

*Since week 47 2014 new baselines have been introduced for comparison with previous years. Baselines use historical data from the NHS Direct surveillance system to estimate seasonal trend but with levels adjusted to reflect changes since the switch to using NHS 111 data in September 2013.

Data summary:

Year	Week	Total calls
2017	51	348,748

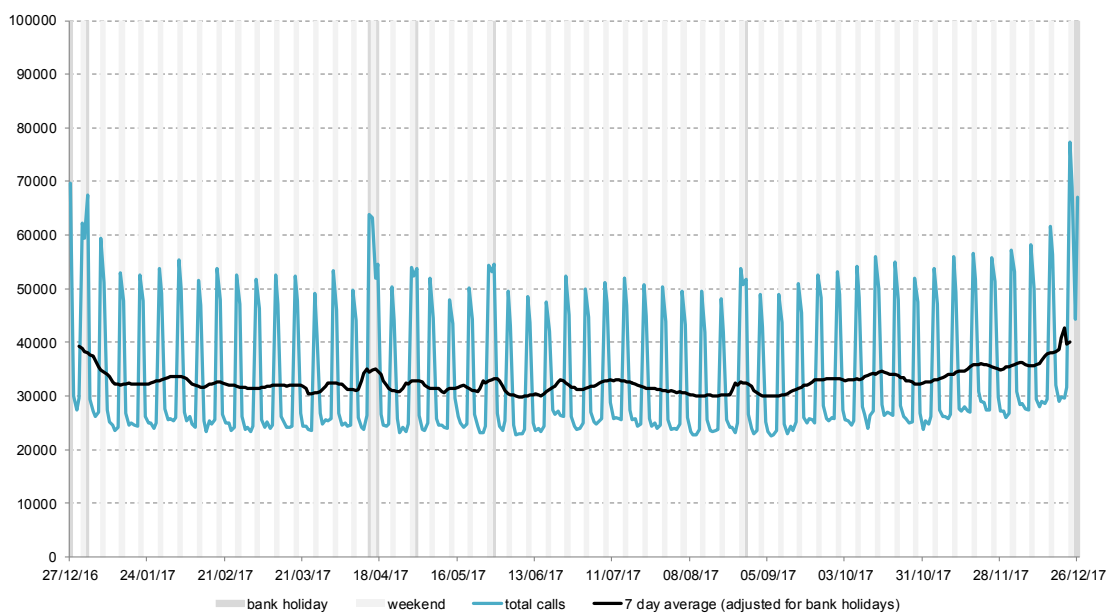
27 December 2017

Year: 2017

Week: 51

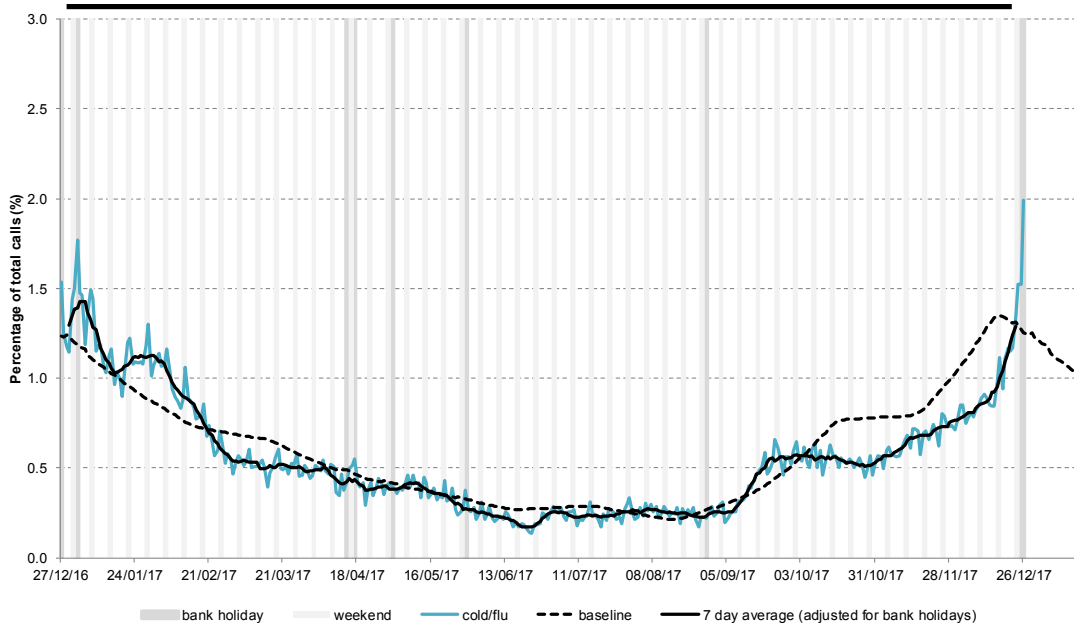
1: Total calls.

The total number of syndromic calls recorded each day by NHS 111.



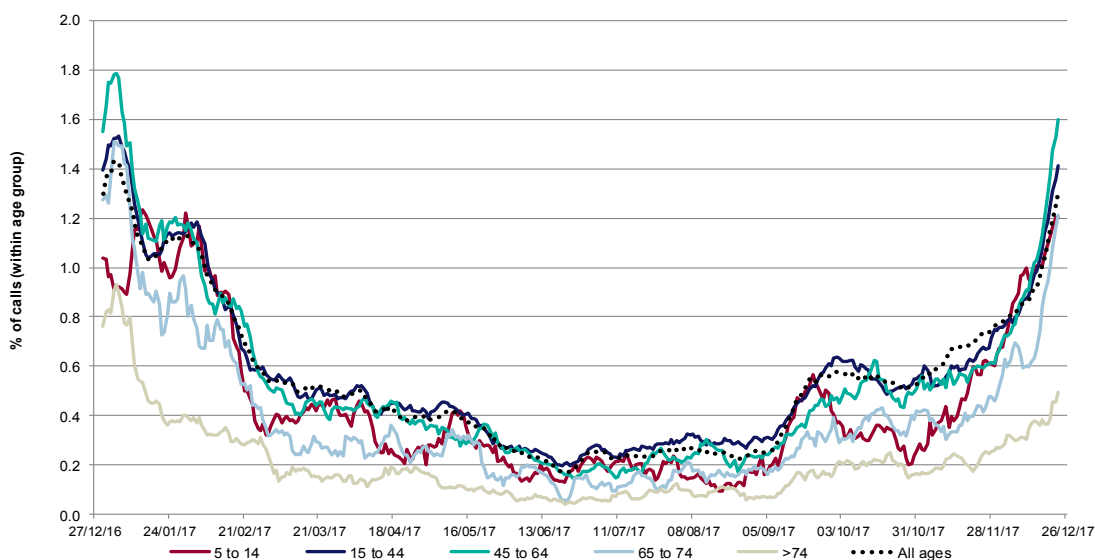
2: Cold/flu

Daily 'cold/flu' calls as a percentage of total calls. Baselines are constructed from historical data since 2010, including data from NHS 111 and NHS Direct.



2a: Cold/flu calls by age group

Cold/flu calls as a percentage of total calls within each age group, shown as a 7 day moving average adjusted for bank holidays. Age groups below 5 years old, not shown.



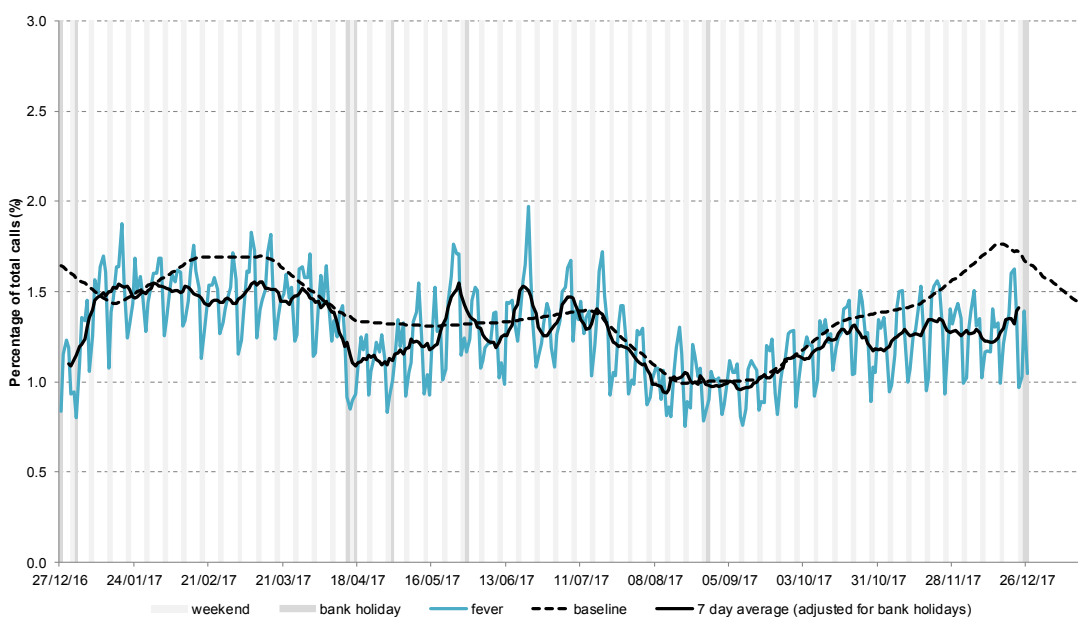
27 December 2017

Year: 2017

Week: 51

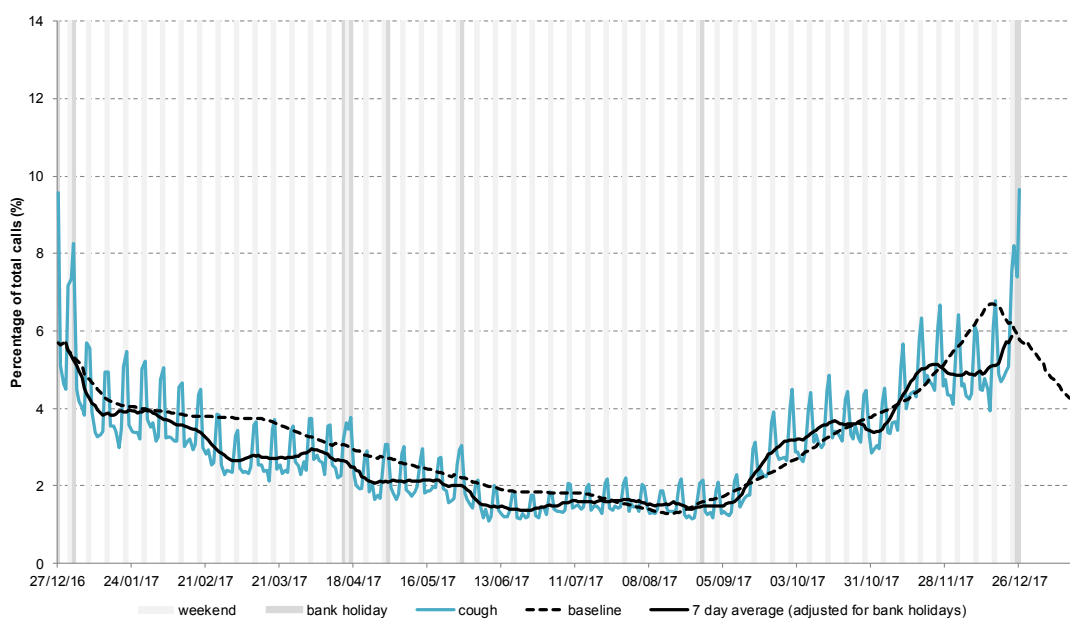
3: Fever

Daily 'fever' calls as a percentage of total calls. Baselines are constructed from historical data since 2010, including data from NHS 111 and NHS Direct.



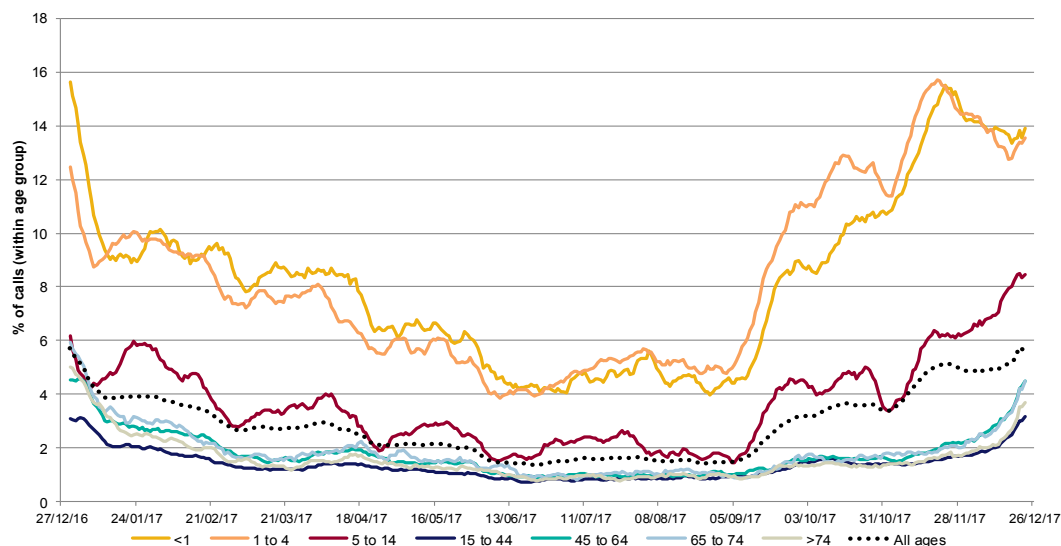
4: Cough

Daily 'cough' calls as a percentage of total calls. Baselines are constructed from historical data since 2010, including data from NHS 111 and NHS Direct.



4a: Cough calls by age group

Cough calls as a percentage of total calls within each age group, shown as a 7 day moving average adjusted for bank holidays.



27 December 2017

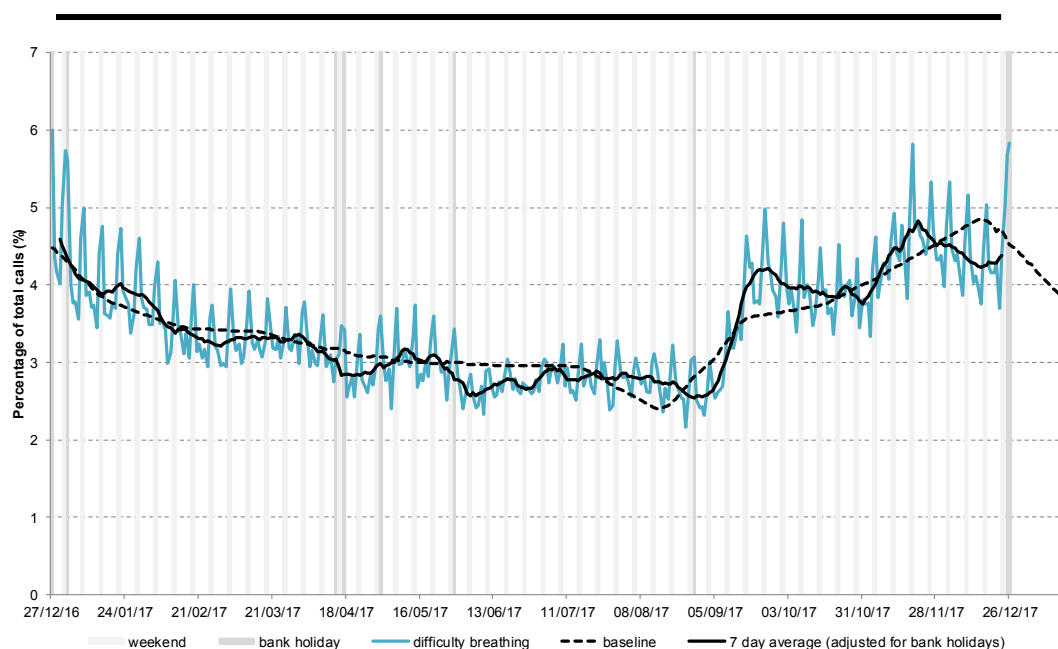
Year: 2017

Week: 51

Intentionally left blank

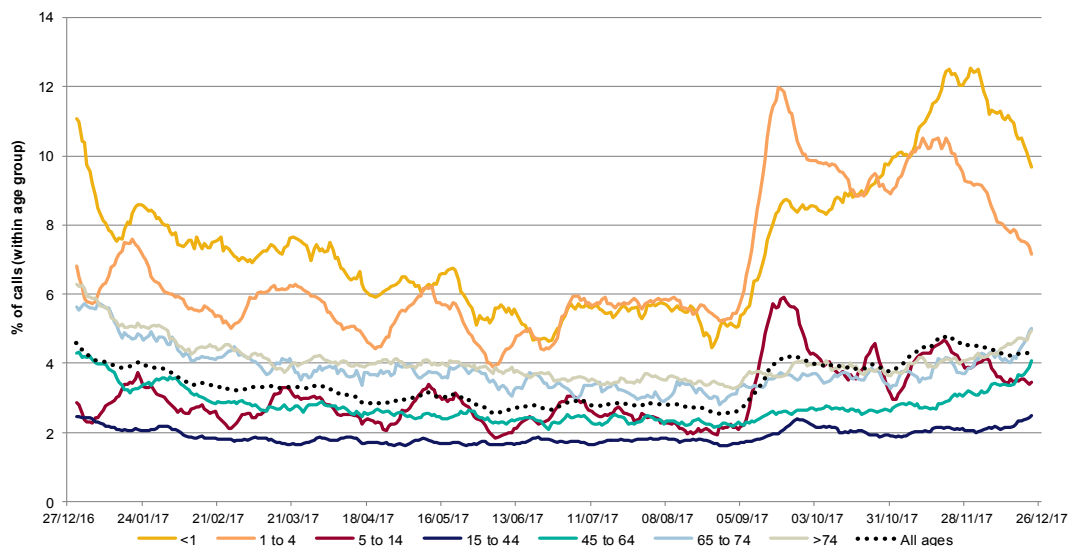
5: Difficulty breathing

Daily 'difficulty breathing' calls as a percentage of total calls. Baselines are constructed from historical data since 2010, including data from NHS 111 and NHS Direct.



5a: Difficulty breathing calls by age group

Difficulty breathing calls as a percentage of total calls within each age group, shown as a 7 day moving average adjusted for bank holidays.



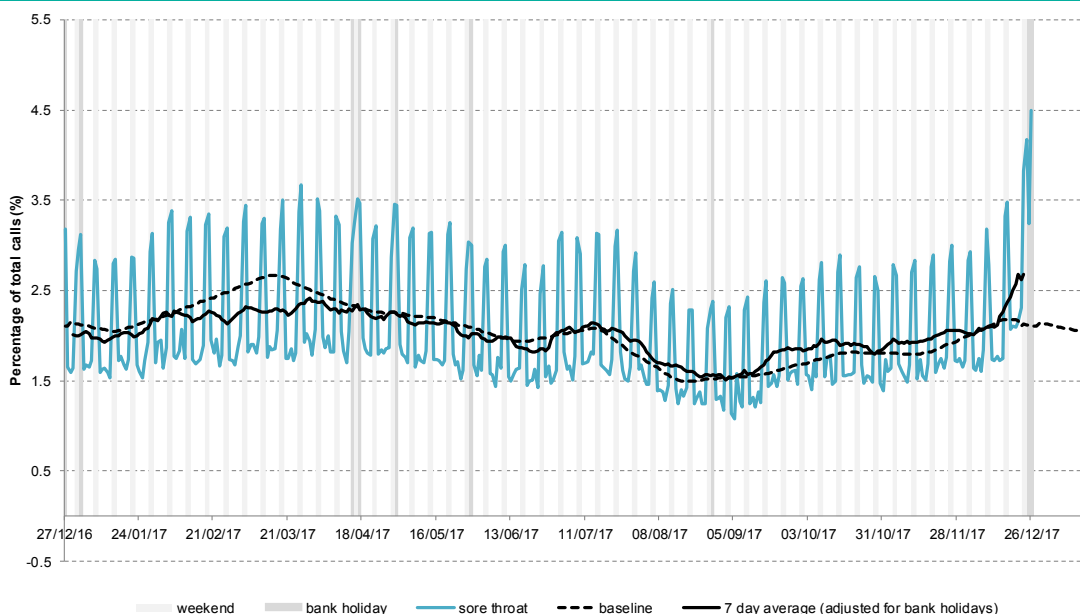
27 December 2017

Year: 2017

Week: 51

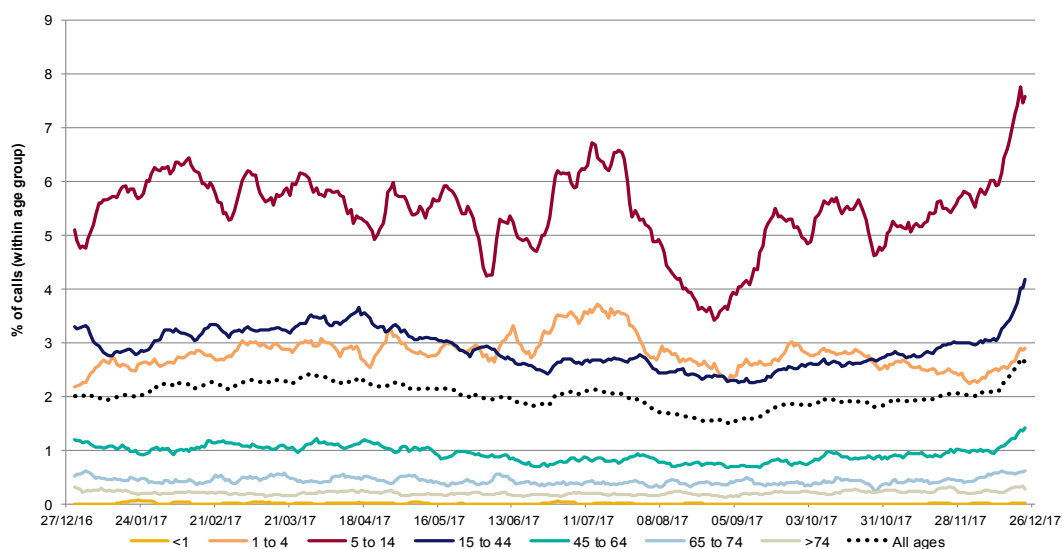
6: Sore throat

Daily 'sore throat' calls as a percentage of total calls. Baselines are constructed from historical data since 2010, including data from NHS 111 and NHS Direct.



6a: Sore throat calls by age group

Sore throat calls as a percentage of total calls within each age group, shown as a 7 day moving average adjusted for bank holidays.



Intentionally left blank

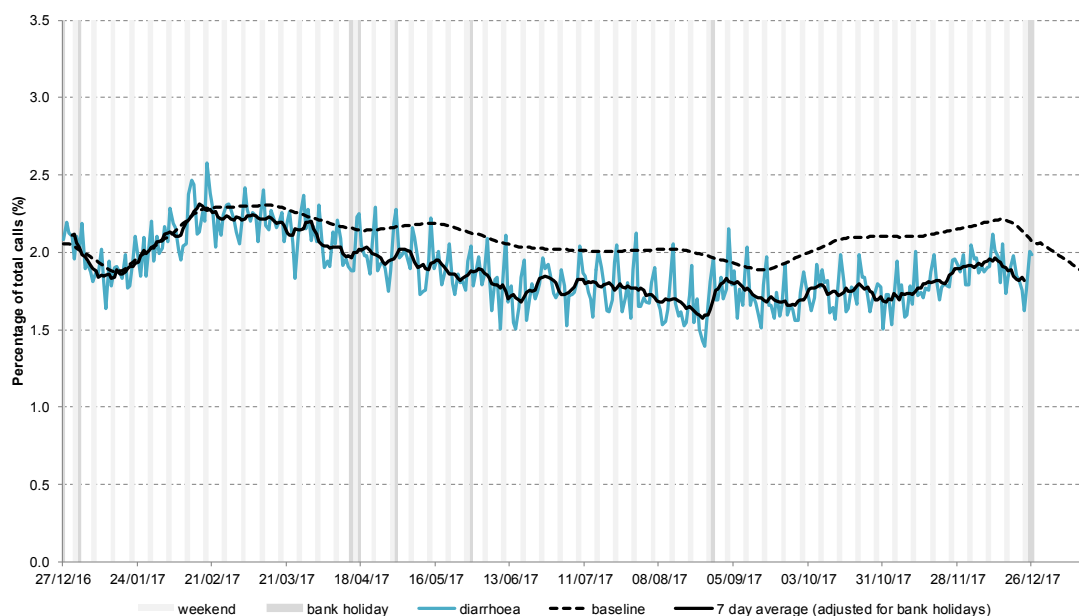
27 December 2017

Year: 2017

Week: 51

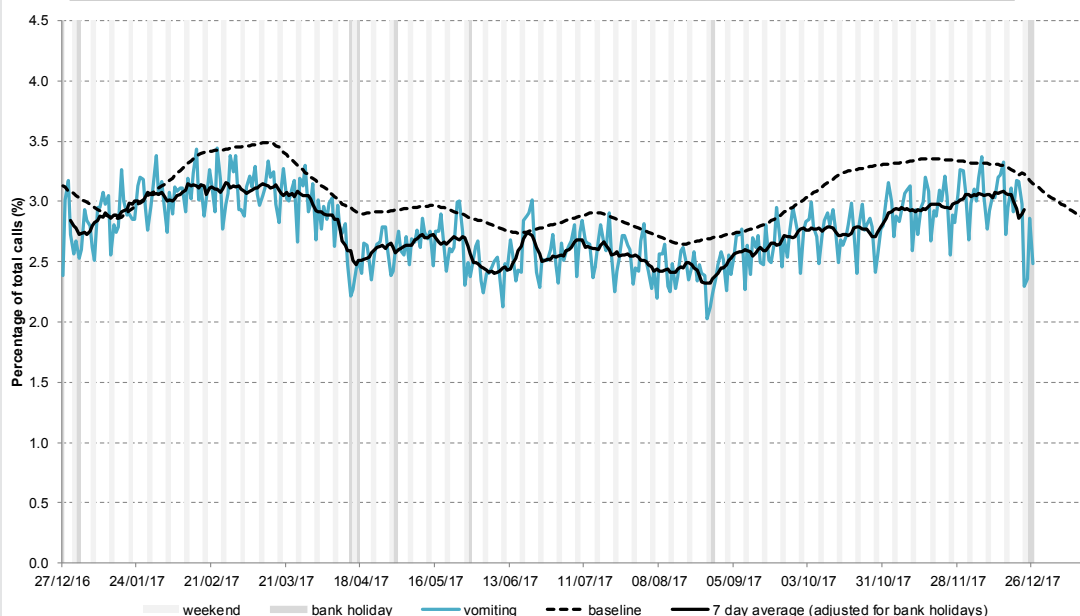
7. Diarrhoea

Daily 'diarrhoea' calls as a percentage of total calls. Baselines are constructed from historical data since 2010, including data from NHS 111 and NHS Direct.



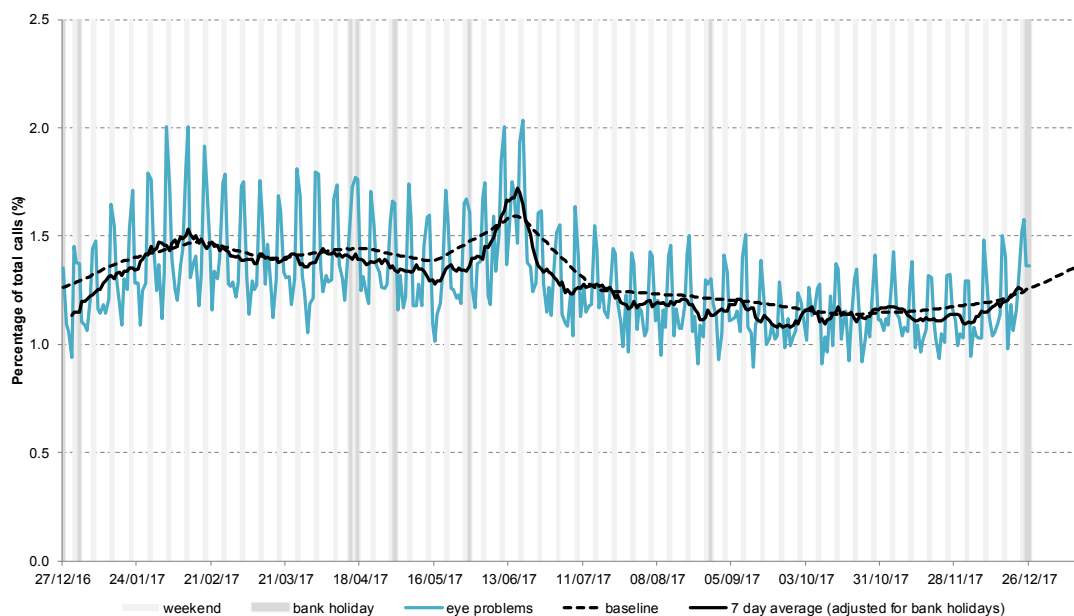
8: Vomiting

Daily 'vomiting' calls as a percentage of total calls. Baselines are constructed from historical data since 2010, including data from NHS 111 and NHS Direct.



9: Eye problems

Daily 'eye problems' calls as a percentage of total calls. Baselines are constructed from historical data since 2010, including data from NHS 111 and NHS Direct.



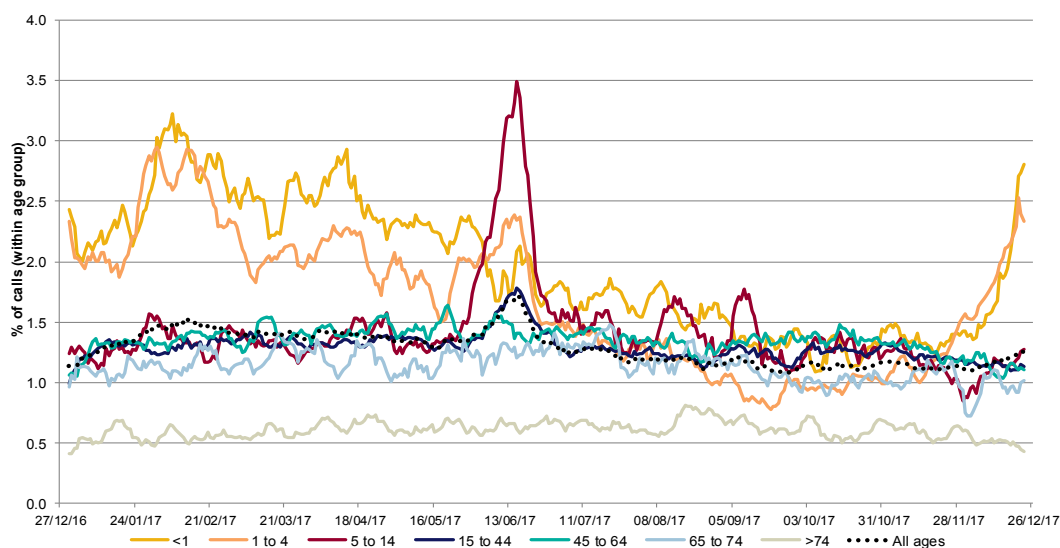
27 December 2017

Year: 2017

Week: 51

9a: Eye problems by age group

Eye problems calls as a percentage of total calls within each age group, shown as a 7 day moving average adjusted for bank holidays.



Intentionally blank

Intentionally blank

Introduction to charts:

- Weekends and bank holidays are marked by vertical **grey** lines (bank holidays **darker grey**).
- A 7-day moving average (adjusted for bank holidays) is overlaid on the daily data reported in each chart, unless specified.
- Baselines represent seasonally expected levels of activity and are constructed from historical data. Furthermore, they take into account any known substantial changes in data collection, population coverage or reporting practices. Baselines are refreshed using the latest data on a regular basis.
- NHS 111 call data are analysed on a daily basis to identify national and regional trends. A statistical algorithm underpins each system, routinely identifying activity that has increased significantly or is statistically significantly high for the time of year. Results from these daily analyses are assessed by the ReSST, along with analysis by age group, and anything deemed of public health importance is alerted by the team.

Notes and further information:

Further information about NHS 111 can be found at:

<http://www.nhs.uk/NHSEngland/AboutNHSservices/Emergencyandurgentcareservices/Pages/NHS-111.aspx>

The Remote Health Advice Syndromic Surveillance bulletin can also be downloaded from the PHE Real-time Syndromic Surveillance website which also contains more information about syndromic surveillance:

<https://www.gov.uk/government/collections/syndromic-surveillance-systems-and-analyses>

Acknowledgements:

We are grateful to NHS 111 and to NHS Digital for their assistance and support in providing the anonymised call data that underpin the Remote Health Advice Syndromic Surveillance System.

Contact ReSST:
syndromic-surveillance
@phe.gov.uk

Remote Health Advice Syndromic Surveillance System Bulletin.

Produced by: PHE Real-time Syndromic Surveillance Team
6th Floor, 5 St Philip's Place, Birmingham, B3 2PW

Tel: 0344 225 3560 > Option 4 > Option 2

Fax: 0121 236 2215

Web: <https://www.gov.uk/government/collections/syndromic-surveillance-systems-and-analyses>