



## Infection report / Immunisation

Volume 10 Number 37 Published on: 28 October 2016\*

### Laboratory reports of hepatitis A and C (England and Wales): April to June 2016

#### Laboratory reports of hepatitis A in England and Wales (April-June 2016)

There were a total of 103 laboratory reports of hepatitis A reported to Public Health England (PHE) during the second quarter of 2016 (April-June 2016). This was a 9% decrease in the number of reports since the first quarter of 2016 (n=113) and a 23% increase on the April to June quarter in 2015 (n=79).

Age-group and sex were well reported (99% complete). 40 (39.2%) reports were among those aged 15-44 years, 49 (48%) reports were among the 45 years and over old-age group and 13 (12.7%) reports were from the under 15 year age-group.

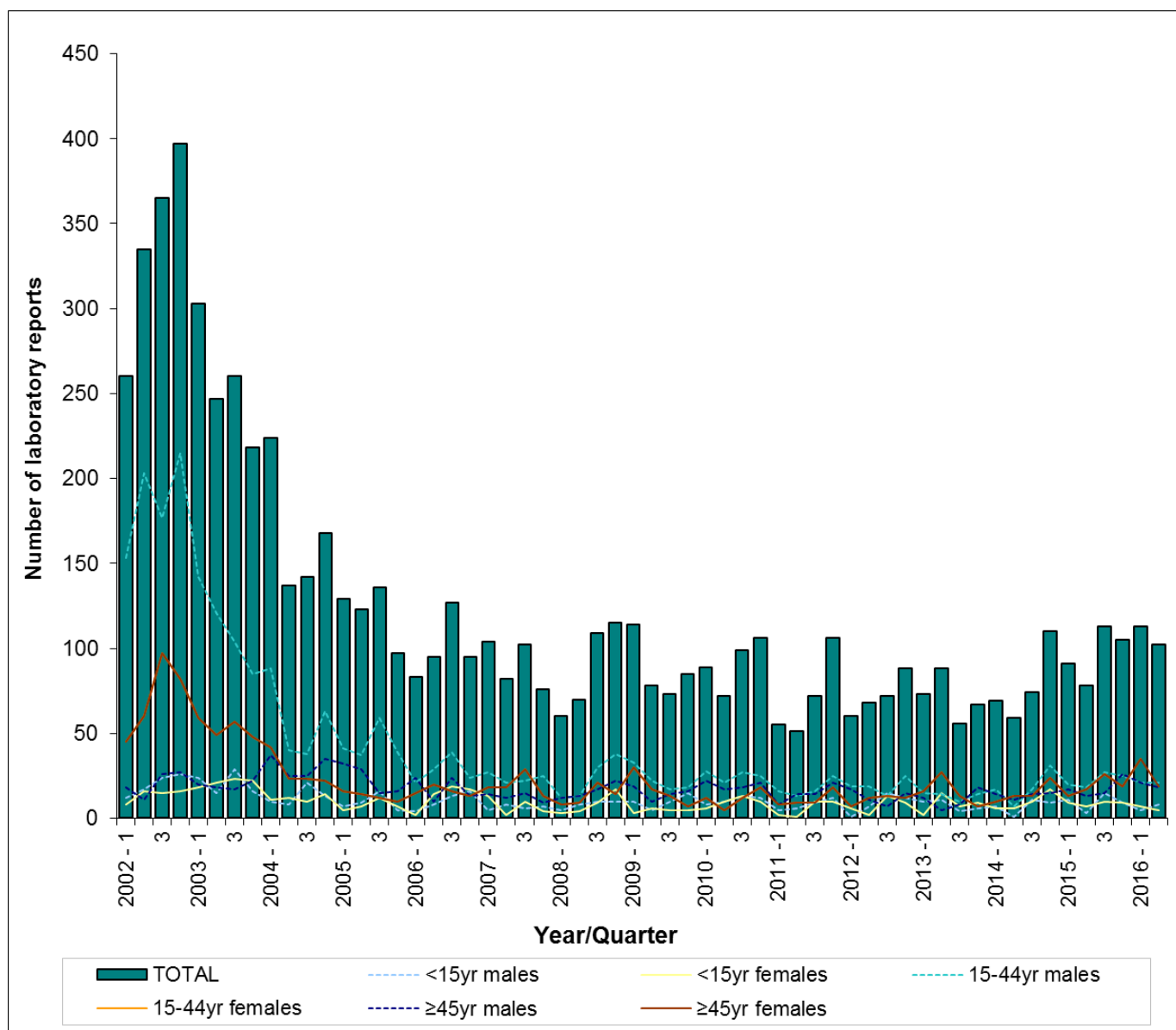
Females accounted for 53.4% of all reports. The majority of reports in the under 15s were in males (61.5%). In the 15-44 years age-group females and males accounted for 47.5% and 52.5% of the cases respectively. Females accounted for the majority of reports (63.3%) in the over 45 years age-group.

**Table 1: Laboratory reports of hepatitis A in England and Wales, April-June 2016**

Age group	Male	Female	Unknown	Total
<1 year	–	–	–	0
1-4 years	4	–	–	4
5-9 years	1	2	–	3
10-14 years	3	3	–	6
15-24 years	3	1	–	4
25-34 years	9	11	–	20
35-44 years	9	7	–	16
45-54 years	6	10	–	16
55-64 years	2	4	–	6
>65 years	10	17	–	27
Unknown	1	–	–	1
<b>Total</b>	<b>48</b>	<b>55</b>	<b>0</b>	<b>103</b>

\* Corrected versions of table 1 and figure 1 in this report were substituted prior to republication on 28 April 2017.

**Figure 1. Laboratory reports of hepatitis A in England and Wales, April-June 2016\***



\* For 2016, data represents England only.

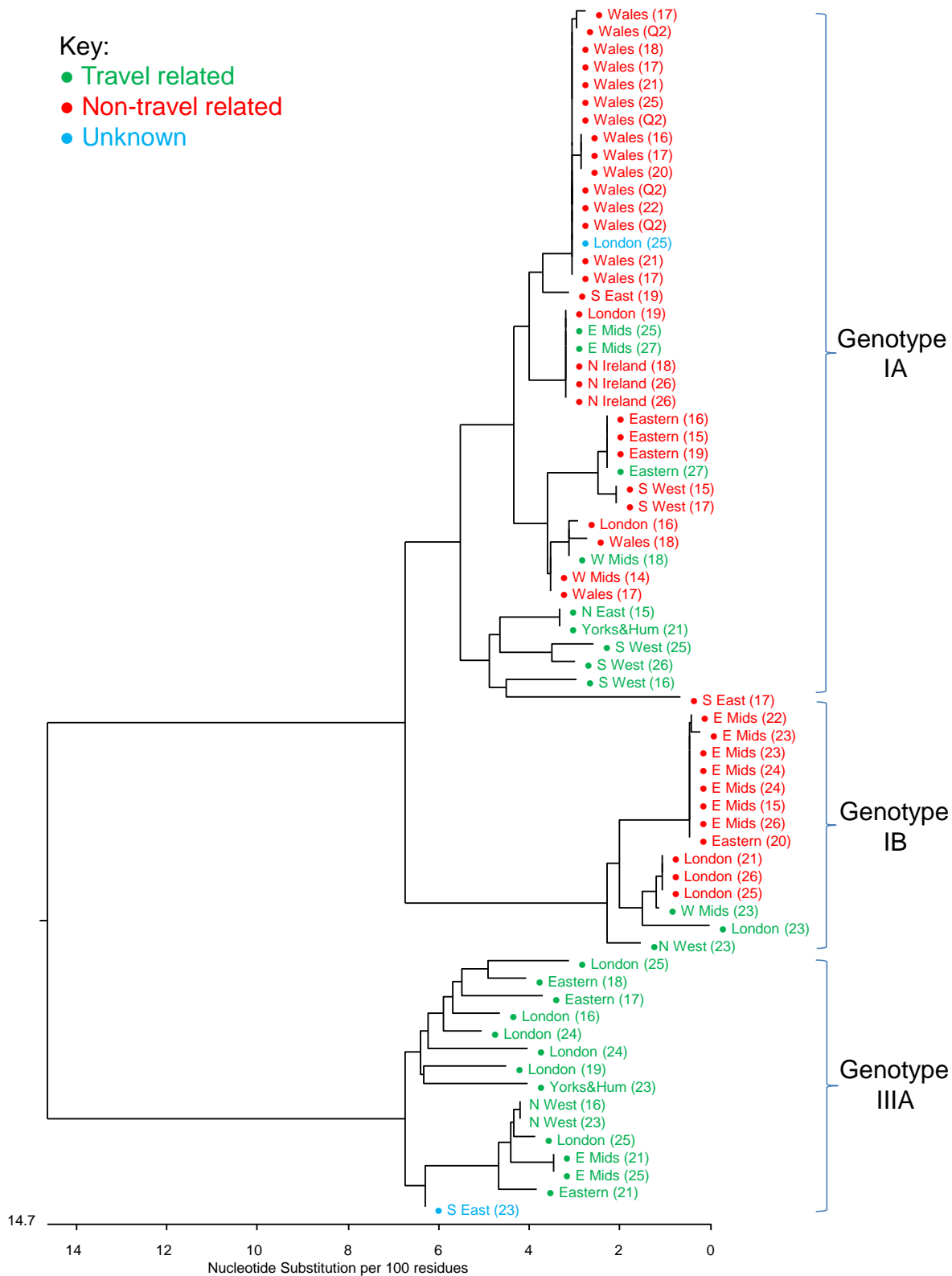
### Reference laboratory confirmation and phylogeny of hepatitis A infection

Of the 103 patients reported as having acute HAV infection during the second quarter of 2016, 55 had samples forwarded to the Virus Reference Department for confirmation and four patients had four insufficient sample left for testing. Seventeen of the patients were not confirmed to have acute HAV infection. The remaining 38 patients were confirmed to have acute HAV infection. In addition 33 patients were confirmed to have acute HAV infection that had not been reported through the laboratory reporting system; 18 cases were from Wales and Northern Ireland and the remaining 15 cases were recorded in HPzone.

A total of 69 patients could be genotyped over this period; 40 were genotype IA (58%), 14 were genotype IB (20.3%) and 15 were genotype IIIA (21.7%). Of these samples 25 were associated

with travel (36.2%), 42 had no travel history (60.9%) and 2 had no information (2.9%). This information is presented as a phylogenetic tree. Each sequence is represented by a dot with the patient region and the week of sampling in brackets.

**Figure 2. Phylogenetic tree of genotype IA, IB, and IIIA sequences April-June 2016 (n=69)**



## Laboratory reports of hepatitis C in England and Wales (April-June 2016)

Between April and June 2016 there were a total of 2,959 laboratory reports of hepatitis C reported to PHE. This was a slight increase to the number of reported cases compared to the first quarter of 2016 (n=2,918), and a 7% increase from April to June quarter in 2015 (n=2,758).

Age-group and sex were well reported (94.8% complete). Where known, males accounted for 67.7% (1985/2933) of reports which is consistent with previous quarters. Adults aged 25-44 years accounted for 49.4% of the total number of hepatitis C reports.

**Table 2: Laboratory reports of hepatitis C in England and Wales, April-June 2016**

Age group	Male	Female	Unknown	Total
<1 year	4	2	–	6
1-4 years	2	–	–	2
5-9 years	1	2	–	3
10-14 years	2	2	–	4
15-24 years	54	35	1	90
25-34 years	390	201	4	595
35-44 years	562	229	11	802
45-54 years	517	209	6	732
55-64 years	275	130	1	406
>65 years	105	82	2	189
Unknown	73	56	1	130
<b>Total</b>	<b>1985</b>	<b>948</b>	<b>26</b>	<b>2959</b>