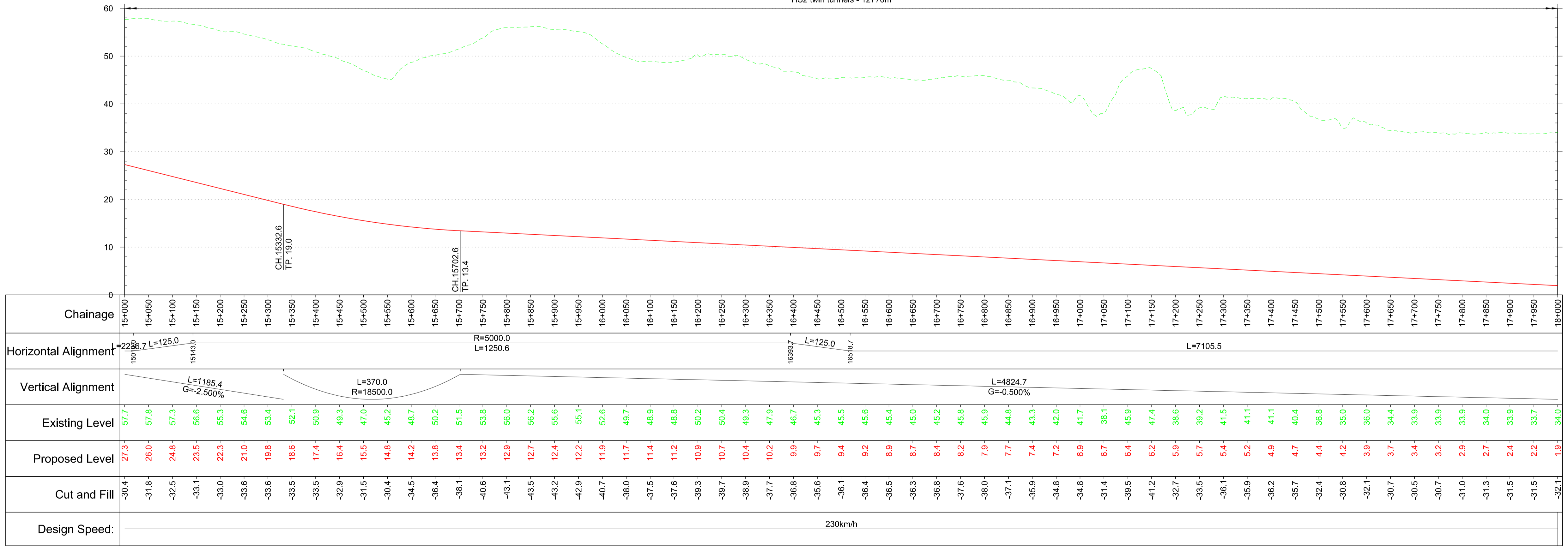


Plan

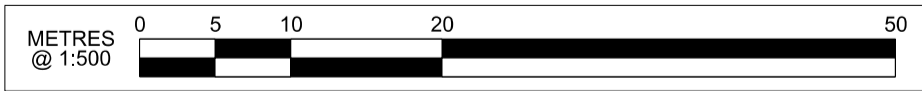
Scale 1:5,000 @ A1

HS2 twin tunnels - 12770m



Profile

Scale H:1:5,000 V:1:500 @ A1



P02	Updated for acceptance	KB	TO	JG	11/07/17	11/07/17	11/07/17
P01	First Issue	KB	TO	JG	15/06/17	15/06/17	15/06/17
Rev	Description	Drawn	Checked	Con App	HS2 App	Scale with caution as distortion can occur.	

HS2 accepts no responsibility for any circumstances which arise from the reproduction of this document after alteration, amendment or abbreviation or if it is issued in part or issued incompletely in any way.

© Crown Copyright and database right 2017. All rights reserved. Ordnance Survey Licence number 100049190

© Crown Copyright material is reproduced with the permission of Land Registry under delegated authority from the Controller of HMSO.

This material was last updated on 2017 and may not be copied, distributed, sold or published without the formal permission of Land Registry. Only an official copy of a title plan or register obtained from the Land Registry may be used for legal or other official purposes.

- Key Environmental Features Legend**
- World Heritage Site
 - Ramsar
 - Special Areas of Conservation
 - Special Protection Areas
 - SSSI
 - National Nature Reserves
 - Area of Outstanding Natural Beauty
 - National Park
 - Major Development Sites
 - Additional Development Sites
 - Scheduled Monuments
 - Registered Parks and Gardens
 - Historical Battlefields
 - Active and/or Authorised Landfill
 - Historical Landfill
 - Flood Zones
 - Listed Building Grade I
 - Listed Building Grade II*
 - Listed Building Grade II

- Legend**
- Track Centrelines
 - Viaduct
 - Tunnel
 - Existing Railway Connection
 - HS2 Connection
 - Fully Retained Cutting/Fill
 - Major Contour
 - Ground Profile
 - Track Profile
 - Minor Contour
 - Node
 - Engineering Earthworks
 - Railway Cutting
 - Railway Embankment
 - HS2 Depot/Station Operational Boundary

Registered in England
Registration No. 06791686
Registered office:
2 Snow Hill,
Queensway,
Birmingham, B4 6GA

Creator/Oriinator
AECOM

Zone	Manchester Metropolitan Spur	Project/Contract	West Midlands to Manchester Route
Design Stage	Post-Consultation	Discipline/Function	Railway Track
Drawing Title	2017 Preferred Route - HSM28B	Drawn	KB
	Plan and Profile	Checked	TO
	Sheet 4 of 7	Approved	JG
		Date	15/06/2017
		Scale	AS SHOWN
		Size	A1
		Drawing No.	C320-AEC-RT-DPP-240-068286
		Rev.	P02