



A QUICK OVERVIEW

IoTUK

The world's leading national IoT programme

Discover how IoTUK works with companies of all sizes to accelerate the adoption of large scale IoT

Idris Jahn

Lead for Health, Funding and International
Digital Catapult

idris.jahn@digicatapult.org.uk

CATAPULT
Digital

CATAPULT

Cell & Gene
Therapy

Medicines
Discovery

Offshore
Renewable
Energy

Compound
Semiconductor
Applications

CATAPULT
Digital

CATAPULT
Future Cities

High Value
Manufacturing

Satellite
Applications

Transport
Systems

Energy
Systems

iotUK

CATAPULT
Digital

About Our Centres Open Calls Events

DRIVING THE
UK ECONOMY
THROUGH
DIGITAL INNOVATION

CATAPULT
Future Cities

WHAT WE DO GET INVOLVED CONTACT US

Future Cities Catapult is a
global centre of excellence
for urban innovation.

Leveraging our neutral position

AI & Machine Learning

UK's first facility dedicated to incubating machine learning talent and providing access to industry challenges for developing new, leading-edge solutions

Connectivity

5G & LPWAN test beds helping industry to shape future solutions and infrastructure

Smart Contracts

Creating new markets for the UK's creative industries using emerging digital technologies such as blockchain

VR & Mixed Reality

Creating the right environment to demonstrate, innovate and test the latest immersive tech and content

iot^{UK}

Convening and amplifying the UK's IoT industry to help business and economic growth



Large Scale Projects





Large Scale Projects



PETRAS
RESEARCH HUB

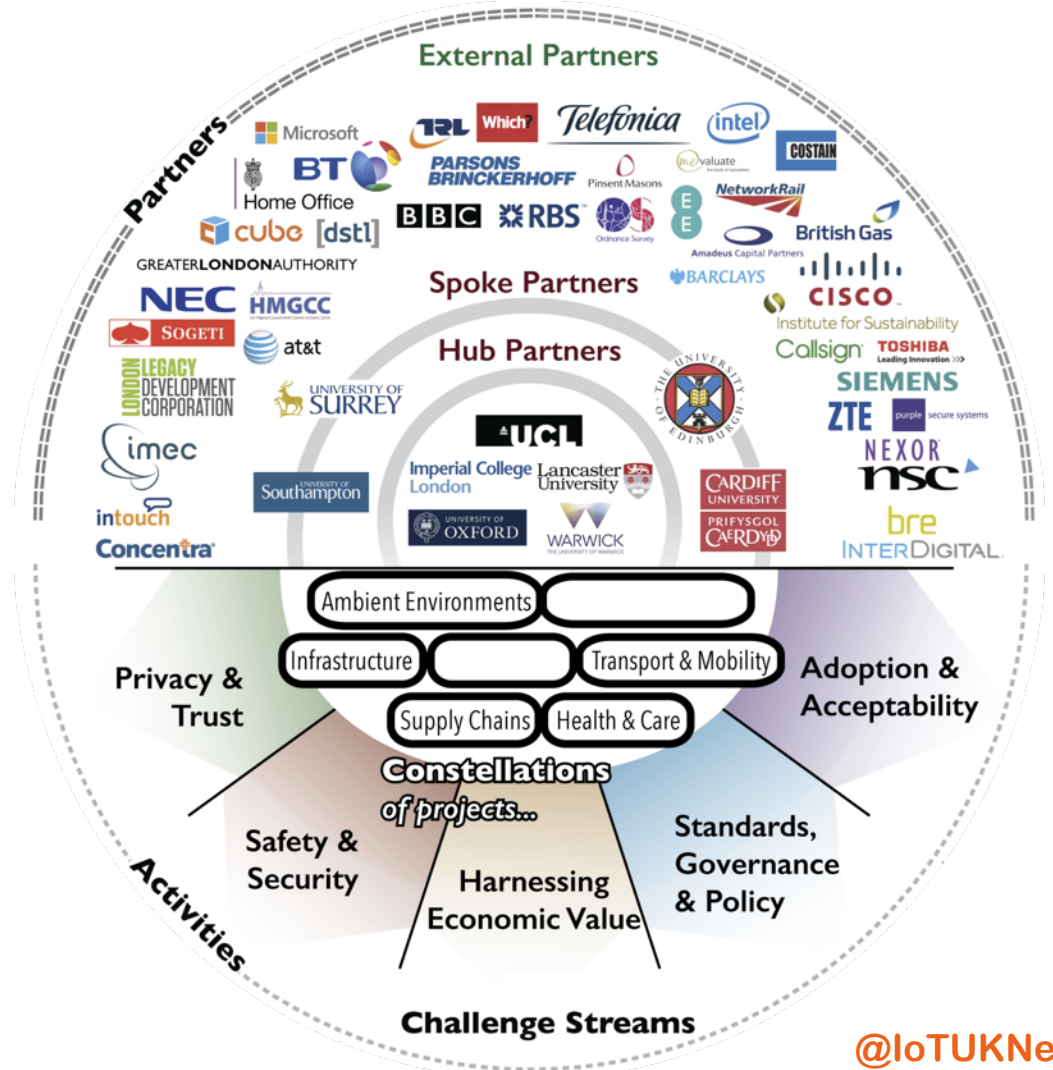
iot^{UK}

The IoT UK logo is centered within a hub diagram. The diagram consists of four dashed orange lines forming a cross shape, with curved ends. The lines connect to the central logo and extend towards the top and bottom logos.

PETRS



Privacy
 Ethics
 Trust
 Reliability
 Acceptability
 Security





Large Scale Projects



PETRAS
RESEARCH HUB

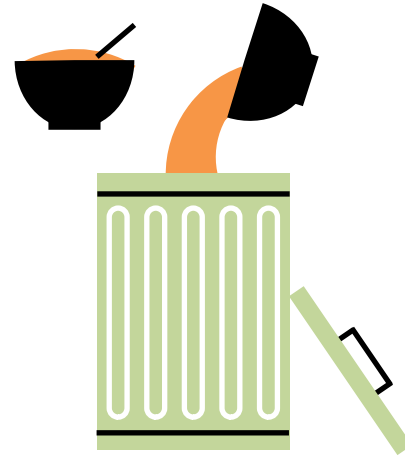


HARDWARE
ACCELERATOR

iotUK

Food waste

Winnow helps commercial kitchens to reduce food waste. They graduated through our IoT Hardware Accelerator and have now won new customers across the world with a further enhanced solution.



Footfall monitoring

Hoxton Analytics help retailers to monitor footfall including detailed data on demographics and behaviour. They can do this without compromising privacy. Since graduating from our IoT Hardware Accelerator, they have deployed their solution with a wide range of organisations.



Large Scale Projects



PETRAS
RESEARCH HUB



HARDWARE
ACCELERATOR

iotUK



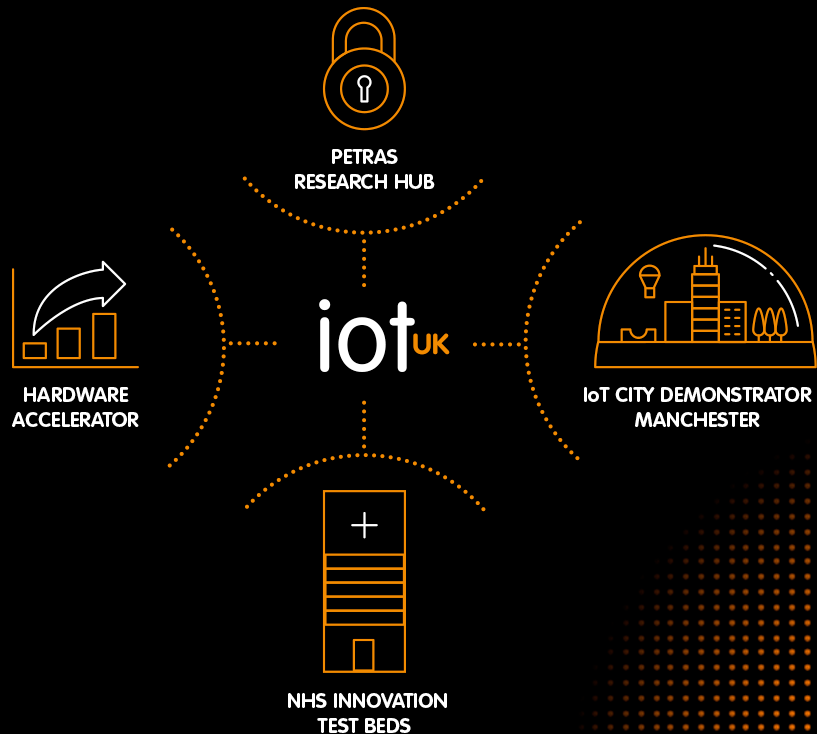
IoT CITY DEMONSTRATOR
MANCHESTER

Talkative bus stops

CityVerve will convert 'flag and pole' bus stops into safe places with location-based services, sensors/beacons, mobile apps and intelligent digital signage. People will check-in to their bus stop and let bus operators know they are waiting for their service.



Large Scale Projects



Diabetes Management

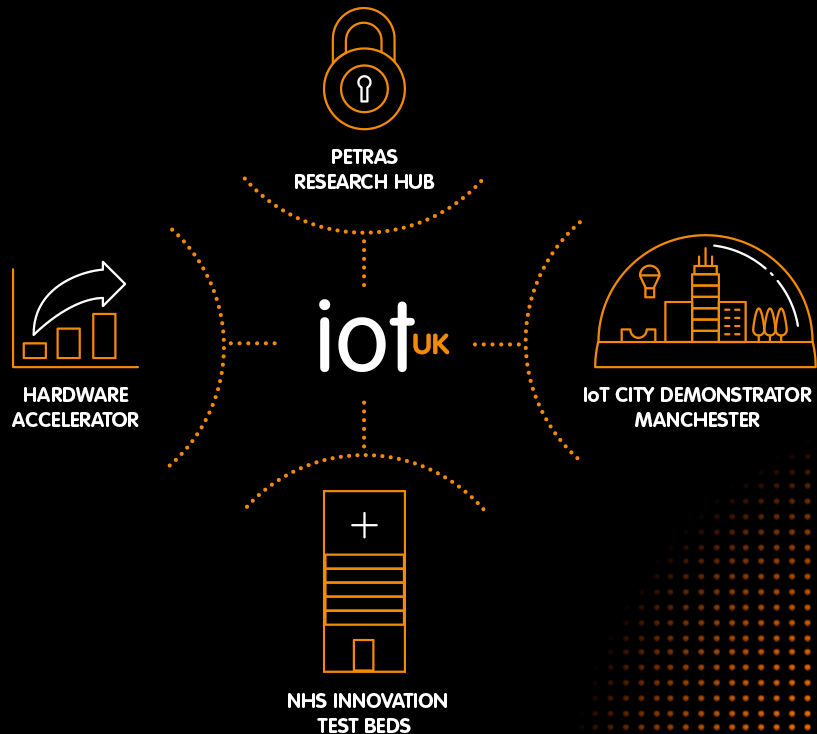
The Test Bed enables people with diabetes to ‘do the right thing at the right time’ to self-manage their condition, and will encourage more timely and appropriate interventions from peers, healthcare professionals and social networks.



Dementia sufferers and their carers

The dementia test bed is a ‘Living Lab’ equipped with the Internet of Things, deploying the most effective combinations of technologies in people’s homes.

Large Scale Projects





ITS ALL ABOUT THE DATA

Data Collection
Streaming + Static

Data Analytics

Actions

TRUST FRAMEWORK



COMMUNITY DEVELOPMENT



INTERNATIONAL



iot^{UK}

ENGAGEMENT FROM THIS REGION

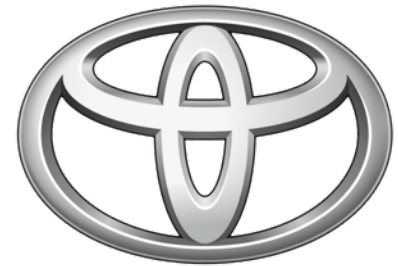
NEC

FUJITSU

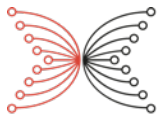
TOSHIBA
Leading Innovation >>>

ZTE

htc[®]



TOYOTA



INPUT | OUTPUT

 **SAMSUNG**
SmartThings

OPPORTUNITIES TO COLLABORATE



**PETRAS
RESEARCH HUB**



**NHS INNOVATION
TEST BEDS**

iot^{UK}

Thank
YOU



info@IoTUK.org.uk



www.IoTUK.org.uk



[@IoTUKNews](https://twitter.com/IoTUKNews)