



Department
for Environment
Food & Rural Affairs

www.gov.uk/defra

Air Quality Plan for the achievement of EU air quality limit value for nitrogen dioxide (NO₂) in Leicester Urban Area (UK0011)

December 2015

This information is out of date.



Llywodraeth Cymru
Welsh Government



DOE

Department of
the Environment
www.doeni.gov.uk



**The Scottish
Government**
Riaghaltas na h-Alba



© Crown copyright 2015

You may re-use this information (excluding logos) free of charge in any format or medium, under the terms of the Open Government Licence v.3. To view this licence visit www.nationalarchives.gov.uk/doc/open-government-licence/version/3/ or email PSI@nationalarchives.gsi.gov.uk

Any enquiries regarding this publication should be sent to us at:

air.quality@defra.gsi.gov.uk

This information is out of date.

Contents

1	Introduction	3
1.1	This document	3
1.2	Context	3
1.3	Zone status	3
1.4	Plan structure	4
2	General Information About the Zone	4
2.1	Administrative information	4
2.2	Assessment details	6
2.3	Reporting under European Directives	8
3	Overall Picture for 2013 Reference Year	8
3.1	Introduction	8
3.2	Reference year: NO ₂ _UK0011_Annual_1	8
4	Measures	13
4.1	Introduction	13
4.2	Source apportionment	13
4.3	Measures	13
4.4	Measures timescales	14
5	Baseline Model Projections	14
5.1	Overview of model projections	14
5.2	Baseline projections: NO ₂ _UK0011_Annual_1	15
	Annexes	19
A	References	19
B	Source apportionment graphs	20
C	Tables of measures	22

1 Introduction

1.1 This document

This document is the Leicester Urban Area agglomeration zone (UK0011) updated air quality plan for the achievement of the EU air quality limit values for nitrogen dioxide (NO₂). This is an update to the air quality plan published in September 2011 (<http://uk-air.defra.gov.uk/library/no2ten/>).

This plan presents the following information:

- General information regarding the Leicester Urban Area agglomeration zone
- Details of the NO₂ exceedance situation within the Leicester Urban Area agglomeration zone
- Details of local air quality measures that have been implemented, will be implemented or are being considered for implementation in this agglomeration zone

This air quality plan for the Leicester Urban Area agglomeration zone should be read in conjunction with the separate UK overview document and the list of UK and national measures. The UK overview document sets out, amongst other things, the authorities responsible for delivering air quality improvements and the list of UK and national measures that are applied in some or all UK zones. The measures presented in this zone plan, the accompanying UK overview document and the list of UK and national measures show how the UK will ensure that compliance with the NO₂ limit values is achieved in the shortest possible time.

This plan should also be read in conjunction with the supporting UK Technical Report which presents information on assessment methods, input data and emissions inventories used in the analysis presented in this plan.

1.2 Context

Two NO₂ limit values for the protection of human health have been set in the Air Quality Directive (2008/50/EC). These are:

- The annual mean limit value: an annual mean concentration of no more than 40 $\mu\text{g m}^{-3}$
- The hourly limit value: no more than 18 exceedances of 200 $\mu\text{g m}^{-3}$ in a calendar year

The Air Quality Directive stipulates that compliance with the NO₂ limit values will be achieved by 01/01/2010. However, where the limit values cannot be achieved by then, the Directive also allowed Member States to postpone this attainment date until 01/01/2015 at the latest provided air quality plans were established demonstrating how the limit values would be met by this extended deadline. Postponement of compliance until 01/01/2015 was granted by the European Commission for Leicester Urban Area agglomeration zone.

1.3 Zone status

The assessment undertaken for the Leicester Urban Area agglomeration zone indicates that the annual limit value was exceeded in 2013 but is likely to be achieved before 2020 through the introduction of measures included in the baseline.

1.4 Plan structure

General administrative information regarding this agglomeration zone is presented in section 2.

Section 3 then presents the overall picture with respect to NO₂ levels in this agglomeration zone for the 2013 reference year of this air quality plan. This includes a declaration of exceedance situations within the agglomeration zone and presentation of a detailed source apportionment for each exceedance situation.

An overview of the measures already taken and to be taken within the agglomeration zone both before and after 2013 is given in section 4.

Baseline modelled projections for 2020, 2025 and 2030 for each exceedance situation are presented in section 5. The baseline projections presented here include, where possible, the impact of measures that have already been taken and measures for which the relevant authority has made a firm commitment to implement. However, it has not been possible to quantify the impact of all the measures. This section therefore also explains which measures have been quantified, and hence included in the model projections, and which measures have not been quantified.

2 General Information About the Zone

2.1 Administrative information

Zone name: Leicester Urban Area

Zone code: UK0011

Type of zone: agglomeration zone

Reference year: 2013

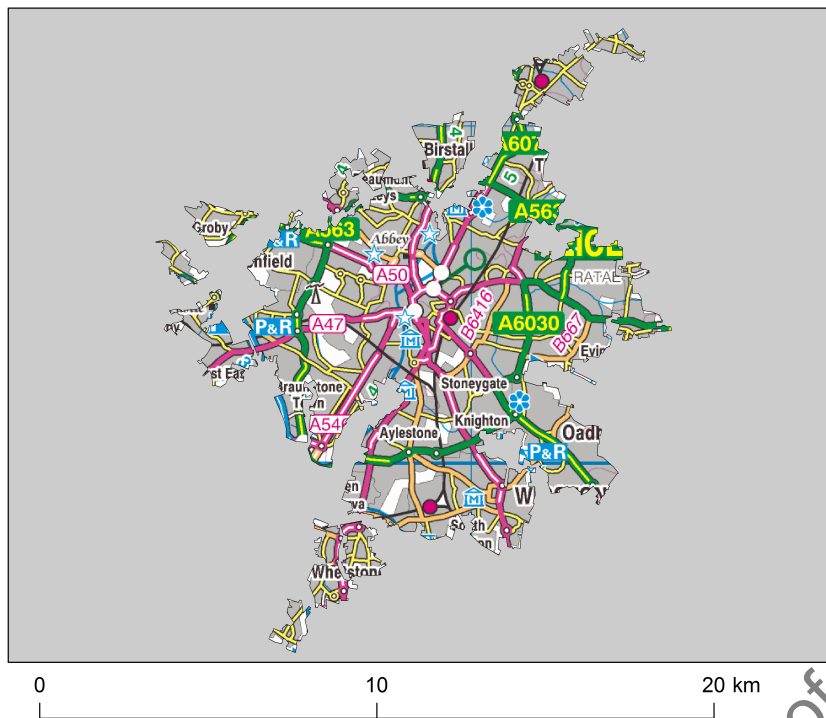
Extent of zone: Figure 1 shows the area covered by the Leicester Urban Area agglomeration zone.

Local Authorities within the zone: Figure 2 shows the location of Local Authorities within the agglomeration zone. A list of these Local Authorities is also given below. The numbers in the list correspond to the numbers in Figure 2.

1. Blaby District Council
2. Charnwood Borough Council
3. Harborough District Council
4. Hinckley and Bosworth Borough Council
5. Leicester City Council
6. Oadby & Wigston District Council

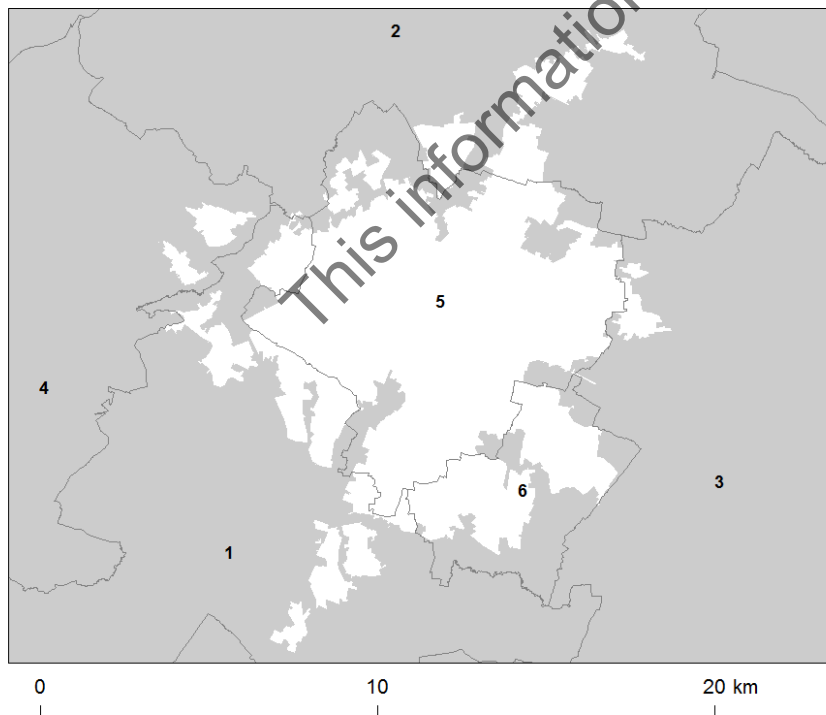
(Note: Local Authority boundaries do not necessarily coincide with zone boundaries. Hence Local Authorities may be listed within more than one zone plan.)

Figure 1: Map showing the extent of the Leicester Urban Area agglomeration zone (UK0011).



© Crown copyright. All rights reserved Defra, License number 100022861 [2015]

Figure 2: Map showing Local Authorities within the Leicester Urban Area agglomeration zone (UK0011).



© Crown copyright. All rights reserved Defra, License number 100022861 [2015]

2.2 Assessment details

Measurements

NO₂ measurements in this zone were available in 2013 from the following national network monitoring stations (NO₂ data capture for each station in 2013 shown in brackets):

1. Leicester Centre GB0597A (67%)
2. Leicester University GB1026A (21%)

Full details of monitoring stations within the Leicester Urban Area agglomeration zone are available from <http://uk-air.defra.gov.uk/networks/network-info?view=aurn>.

Modelling

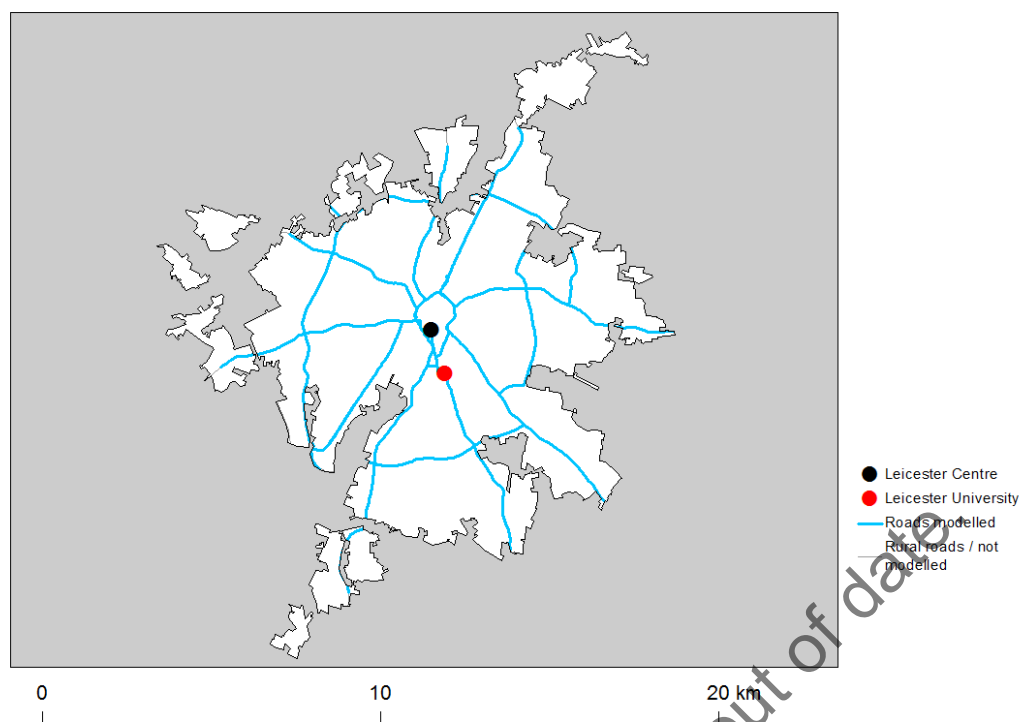
Modelling for the 2013 reference year has been carried out for the whole of the UK. This modelling covers the following extent within this zone:

- Total background area within zone (approx): 101 km²
- Total population within zone (approx): 432,018 people
- Total road length where an assessment of NO₂ concentrations has been made: 82 km in 2013 (and similar lengths in previous years)

Zone maps

Figure 3 presents the location of the NO₂ monitoring stations within this zone for 2013 and the roads for which NO₂ concentrations have been modelled. NO₂ concentrations at background locations have been modelled across the entire zone at a 1 km x 1 km resolution.

Figure 3: Map showing the location of the NO₂ monitoring stations with valid data in 2013 and roads where concentrations have been modelled within the Leicester Urban Area (UK0011) agglomeration zone.



© Crown copyright. All rights reserved Defra, License number 100022861 [2015]

2.3 Reporting under European Directives

From 2001 to 2012 the UK has reported annually on air quality concentrations using a standard Excel questionnaire (Decision 2004/461/EC). These questionnaires are available online from <http://cdr.eionet.europa.eu/gb/eu/annualair>. Since 2013 reporting has been via an e-reporting system (Decision 2011/850/EU) <http://cdr.eionet.europa.eu/gb/eu/>.

In addition, the UK has reported on air quality plans and programmes (Decision 2004/224/EC) since 2003. Historic plans and programmes are available on <http://cdr.eionet.europa.eu/gb/eu/aqpp>.

3 Overall Picture for 2013 Reference Year

3.1 Introduction

There are two limit values for the protection of health for NO₂. These are:

- The annual limit value (annual mean concentration of no more than 40 $\mu\text{g m}^{-3}$)
- The hourly limit value (no more than 18 hourly exceedances of 200 $\mu\text{g m}^{-3}$ in a calendar year)

Within the Leicester Urban Area agglomeration zone the annual limit value was exceeded in 2013. Hence, one exceedance situation for this zone has been defined, NO₂_UK0011_Annual_1, which covers exceedances of the annual limit value. This exceedance situation is described below.

Leicester Urban Area agglomeration zone had a time extension in place until 01/01/2015. While a location has a time extension in place, a margin of tolerance has been defined by the Air Quality Directive (2008/50/EC) which applies to the annual mean NO₂ limit value until the time extension expires. In this agglomeration zone the annual mean concentration of NO₂ did not exceed the limit value plus the maximum margin of tolerance (60 $\mu\text{g m}^{-3}$) in 2013, thus the agglomeration zone was reported to the European Commission as compliant for this year. For the purpose of this Air Quality Plan the exceedance situation is defined with respect to the NO₂ limit value, irrespective of the compliance status submitted for 2013.

3.2 Reference year: NO₂_UK0011_Annual_1

The NO₂_UK0011_Annual_1 exceedance situation covers all exceedances of the annual mean limit value in the Leicester Urban Area agglomeration zone in 2013.

Compliance with the annual limit value in this exceedance situation has been assessed using a combination of air quality measurements and modelling. Table 1 presents measured annual concentrations at national network stations in this exceedance situation since the 1st Daughter Directive (1999/30/EC) came into force in 2001. This shows that there were no measured exceedances of the annual limit value in this zone in 2013. Table 2 summarises modelled annual mean NO₂ concentrations in this exceedance situation for the same time period. This table shows that, in 2013, 19.4 km of road length and 1 km² background area were modelled to exceed the annual limit value. Maps showing the modelled annual mean NO₂ concentrations for 2013 at background and at roadside locations are presented in Figures 4 and 5 respectively. All modelled exceedances of the annual limit value are coloured orange or red in the maps.

The maximum measured concentration in the zone varies due to changes in emissions and varying meteorology in different years. However, the models are also updated each year to take into account the most up-to-date science, so the modelled results for different years may not be directly comparable.

The modelling carried out for this exceedance situation has also been used to determine the annual mean NOx source apportionment for all modelled locations. Emissions to air are regulated in terms of oxides of nitrogen (NOx), which is the term used to describe the sum of nitrogen dioxide (NO₂) and nitric oxide (NO). Ambient NO₂ concentrations include contributions from both directly emitted primary NO₂ and secondary NO₂ formed in the atmosphere by the oxidation of NO. As such, it is not possible to calculate an unambiguous source apportionment specifically for NO₂ concentrations; therefore the source apportionment in this plan is presented for NOx, rather than for NO₂ (for further details please see the UK Technical Report). Table 3 summarises the modelled NOx source apportionment for the section of road with the highest modelled NO₂ concentration in this exceedance situation in 2013. This is important information because it shows which sources need to be tackled at the location with the largest compliance gap in the exceedance situation.

Figure B.1 in Annex B presents the annual mean NOx source apportionment for each section of road within the NO₂_UK0011_Annual_1 exceedance situation (i.e. the source apportionment for all exceeding roads only) in 2013. In this figure roads have been grouped into motorways, primary roads (major roads managed by local authorities) and trunk roads (major roads managed by highways authorities).

This information is out of date.

Table 1: Measured annual mean NO₂ concentrations at national network stations in NO₂_UK0011_Annual_1 for 2001 onwards, μgm^{-3} (a). Data capture shown in brackets.

Site name (EOI code)	2001	2002	2003	2004	2005	2006	2007	2008	2009	2010	2011	2012	2013
Leicester Centre (GB0597A)	35 (98)	35 (94)	37 (93)	36 (85)	33 (97)	30 (98)	32 (99)	30 (99)	29 (93)	42 (81)	30 (70)	30 (89)	25 (67)
Leicester University (GB1026A)													32 (21)

(a) Annual Mean Limit Value = $40 \mu\text{gm}^{-3}$

Table 2: Annual mean NO₂ model results in NO₂_UK0011_Annual_1 for 2001 onwards.

	2001	2002	2003	2004	2005	2006	2007	2008	2009	2010	2011	2012	2013
Road length exceeding (km)	77.2	36.4	71.4	46.3	47.8	46.5	51.6	24.1	25.3	43.4	18.6	18.5	19.4
Background exceeding (km ²)	15	0	5	0	0	0	0	0	0	0	2	1	1
Maximum modelled concentration (μgm^{-3}) (a)	64.0	54.0	61.4	58.1	59.2	56.2	58.2	58.2	66.5	73.5	66	62	53

(a) Annual Mean Limit Value = $40 \mu\text{gm}^{-3}$

Table 3: Modelled annual mean NOx source apportionment at the traffic count point with the highest modelled concentration in 2013 in NO2_UK0011_Annual_1 (μgm^{-3}) (traffic count point 48489 on the A594; OS grid (m): 458290, 304630).

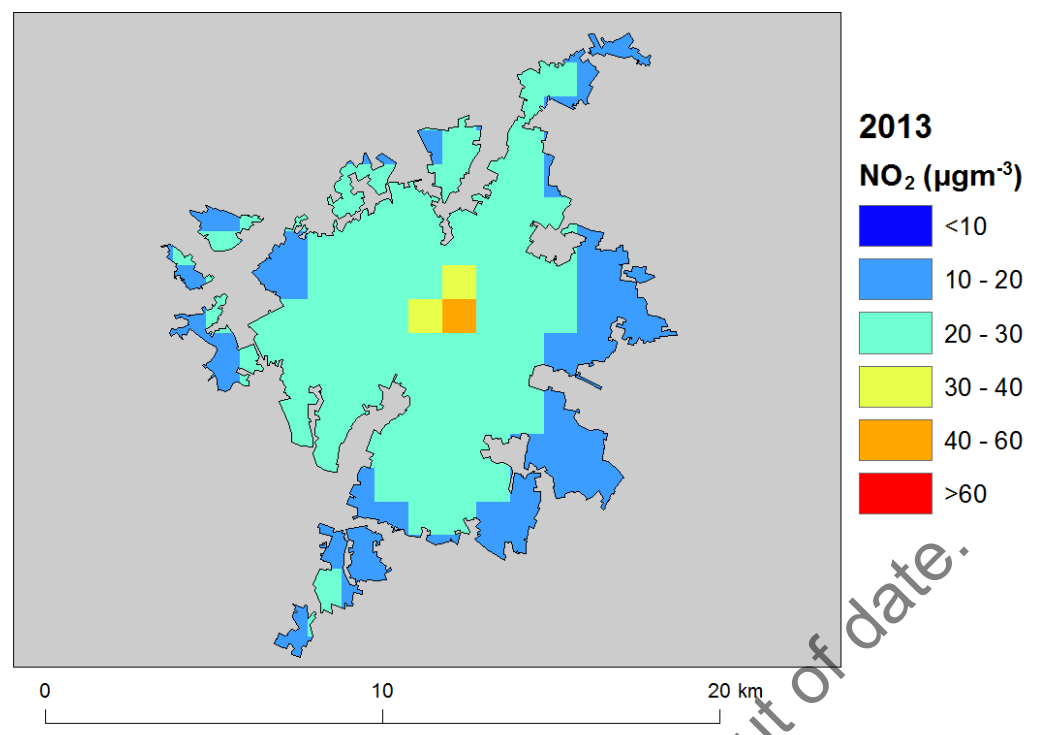
Spatial scale	Component	Concentration at highest road link (a)
Regional background sources NOx (i.e. contributions from distant sources of > 30 km from the receptor).	Total	12.5
	From within the UK	7.8
	From transboundary sources (includes shipping and other EU member states)	4.7
Urban background sources NOx (i.e. sources located within 0.3 - 30 km from the receptor).	Total	42.3
	From road traffic sources	23.4
	From industry (including heat and power generation)	5.2
	From agriculture	NA
	From commercial/residential sources	6.3
	From shipping	0.0
	From off road mobile machinery	5.3
	From natural sources	NA
	From transboundary sources	NA
	From other urban background sources	2.1
Local sources NOx (i.e. contributions from sources < 0.3 km from the receptor).	Total	83.0
	From petrol cars	9.5
	From diesel cars	32.8
	From HGV rigid (b)	9.1
	From HGV articulated (b)	2.3
	From buses	16.5
	From petrol LGVs (c)	0.2
	From diesel LGVs (c)	12.4
	From motorcycles	0.1
	From London taxis	0.0
Total NOx (i.e. regional background + urban background + local components)		137.8
Total NO ₂ (i.e. regional background + urban background + local components)		53

(a) Components are listed with NOx concentration of NA when there is no source from this sector.

(b) HGV = heavy goods vehicle

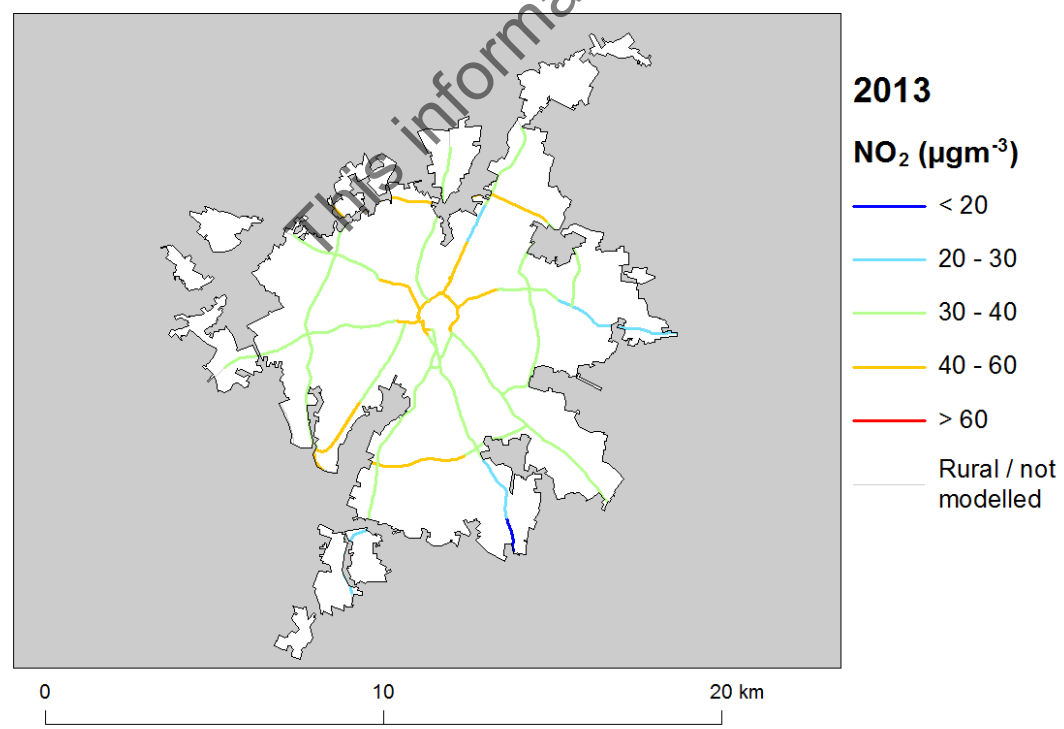
(c) LGV = light goods vehicle

Figure 4: Map of modelled background annual mean NO₂ concentrations 2013. Modelled exceedances of the annual limit value are shown in orange and red.



© Crown copyright. All rights reserved Defra, License number 100022861 [2015]

Figure 5: Map of modelled roadside annual mean NO₂ concentrations 2013. Modelled exceedances of the annual limit value are shown in orange and red.



© Crown copyright. All rights reserved Defra, License number 100022861 [2015]

4 Measures

4.1 Introduction

This section gives details of measures that address exceedances of the NO₂ limit values within Leicester Urban Area agglomeration zone. This includes both measures that have already been taken and measures for which there is a firm commitment that they will be taken.

Section 5 then explains the extent to which it has been possible to incorporate the impacts of these measures into the baseline modelling carried out for this assessment.

4.2 Source apportionment

It is important to understand which sources are responsible for causing the exceedance in order to most effectively tailor measures to address the NO₂ exceedance situation described in section 3 above. This can be achieved by considering the source apportionment for the exceedance situation, also presented in section 3. A summary of what the source apportionment shows and the implications for which measures would therefore be appropriate is given here.

Local road traffic was the dominant source in this exceedance location in the reference year. The largest contribution was from cars at the location of maximum exceedance with a contribution of 42.3 μgm^{-3} of NO_x out of a total of 137.8 μgm^{-3} of NO_x. Cars, LGVs and on some roads buses, articulated HGVs and Rigid HGVs were important sources on the primary roads with the highest concentrations. For all road links concentrations of NO_x from diesel cars were approximately four times greater than NO_x emissions from petrol cars. NO_x concentrations from petrol LGVs are a small component of total NO_x concentrations and less than 2% of total NO_x from LGVs.

This indicates that appropriate measures should impact on local road traffic sources in this zone. Other measures to address the urban background sources may also be beneficial.

4.3 Measures

Measures potentially affecting NO₂ in this agglomeration zone have been taken and/or are planned at a range of administrative levels. These are:

- European Union
- National (i.e. England, Scotland, Wales, Northern Ireland or whole UK)
- Local (i.e. UK Local Authorities)

Details of European Union measures (e.g. Euro Standards, Fuel Quality Directives, Integrated Pollution Prevention and Control) can be found on the European Commission's website (http://ec.europa.eu/environment/air/index_en.htm). Details of national measures are given in the UK overview document and the list of UK and national measures.

Relevant Local Authority measures within this exceedance situation are listed in Table C.1 (see Annex C). Table C.1 lists measures which a local authority has carried out or is in the process of carrying out, plus additional measures which the local authority is committed to carrying out or is investigating with the expectation of carrying out in the future.

Overview

Leicester's Local Transport Plan aims to reduce the negative impact of traffic on air quality and deliver improvements to access to key services by public transport, walking and cycling that will help improve air quality.

The Leicester North West Major Transport Scheme, with attributed funding of £19.2 million, is run jointly by Leicester City Council and Leicestershire County Council and is intended to produce significant network improvements. The scheme consists of a wedge broadly around the transport corridors of the A50 (Grobby Road) and the A6 (Loughborough Road). It will be constructed over three years beginning in 2015/16. There will be a phased approach to delivering the construction elements of the scheme mainly to minimise disruption to road users during the three years of construction. Typically the works are improved junctions and roads, improved signal control, cycle and pedestrian route improvements. Buses will also benefit from continued development of real-time information and smart ticketing.

The policies that have been adopted within the area will help improve air quality by reducing the level of emissions. As part of this, a number of buses have been retrofitted and taxi and freight operators have been encouraged to change vehicles to achieve emission reductions. For example, there is a 50% reduction on the licence fee for taxis to go to the Euro VI standard. To help encourage a shift away from using private cars for travelling, a number of cycling routes have also been implemented that will reduce congestion and an initiative to engage 100 small businesses to carry out staff cycle training.

4.4 Measures timescales

Timescales for national measures are given in the UK overview document and list of UK and national measures.

Local Authorities report on progress with the implementation of their action plans annually and review action plan measures regularly. Information on local measures was collected in February/March 2015. Hence, any Local Authority action plans and measures adopted by Local Authorities after this time have not been included in this air quality plan, unless additional information was provided during the consultation process.

The reference year for this air quality plan is 2013. Where measures started and finished before 2013, then the improvement in air quality resulting from these measures will have already taken place before the reference year and the impact of these measures will have been included in the assessment where the measure has had an impact on the statistics used to compile the emission inventory. Many measures started before the reference year and will continue to have a beneficial impact on air quality well beyond the reference year. Measures with a start date before 2013 and an end date after 2013 may have an impact on concentrations in the reference year and a further impact in subsequent years. Where the Status column in Annex C is 'Implementation', this shows that this measure is already underway or that there is a commitment for this measure to go ahead. Where the Status is 'Planning', 'Preparation' or 'Other' the level of commitment is less clear and it is possible some of these measures may not go ahead.

5 Baseline Model Projections

5.1 Overview of model projections

Model projections for 2020, 2025 and 2030, starting from the 2013 reference year described in section 3, have been calculated in order to determine when compliance with the NO₂ limit values is likely to be achieved on the basis of EU, regional and local measures currently planned. Details of the methods used for the baseline emissions and projections modelling are provided in the UK technical report.

For national measures, it has not been possible to quantify the impact of all measures on emissions and ambient concentrations. The impact for all quantifiable measures has been included in the baseline projections.

The impacts of the individual Local Authority measures have not been explicitly included in the baseline model projections. However, measures may have been included implicitly if they have influenced the traffic counts for 2012 (used as a basis for the compilation of the emission inventory) or in the traffic activity projections to 2020 and beyond (used to calculate the emissions projections). It should be recognised that these measures will have a beneficial impact on air quality, even if it has not been possible to quantify this impact here.

5.2 Baseline projections: NO₂_UK0011_Annual_1

Table 4 presents summary results for the baseline model projections for 2020, 2025 and 2030 for the NO₂_UK0011_Annual_1 exceedance situation. This shows that the maximum modelled annual mean NO₂ concentration predicted for 2020 in this exceedance situation is 39 $\mu\text{g m}^{-3}$. Hence, the model results suggest that compliance with the NO₂ annual limit value is likely to be achieved before 2020 under baseline conditions in this exceedance situation.

Figures 6 and 7 show maps of projected annual mean NO₂ concentrations in 2020, 2025 and 2030 for background and roadside locations respectively. Maps for 2013 are also presented here for reference.

It should be noted that the baseline projections presented here include the impacts of some measures, where they can be quantified, that have already been or will be implemented.

Table 4: Annual mean NO₂ model results in NO₂_UK0011_Annual_1.

	2013	2020	2025	2030
Road length exceeding (km)	19.4	0.0	0.0	0.0
Background exceeding (km ²)	1	0	0	0
Maximum modelled concentration NO ₂ (μgm ⁻³) (a)	53	39	35	33
Corresponding modelled concentration NOx (μgm ⁻³) (b)	138	98	85	81

(a) Annual Mean Limit Value = 40 μgm⁻³

(b) NOx is recorded here for comparison with the NOx source apportionment graphs for 2013 presented in Annex B of this plan. Limit values for EU directive purposes are based on NO₂.

This information is out of date.

Figure 6: Background baseline projections of annual mean NO₂ concentrations in 2020, 2025 and 2030. 2013 is also included here for reference. Modelled exceedances of the annual limit value are shown in orange and red.

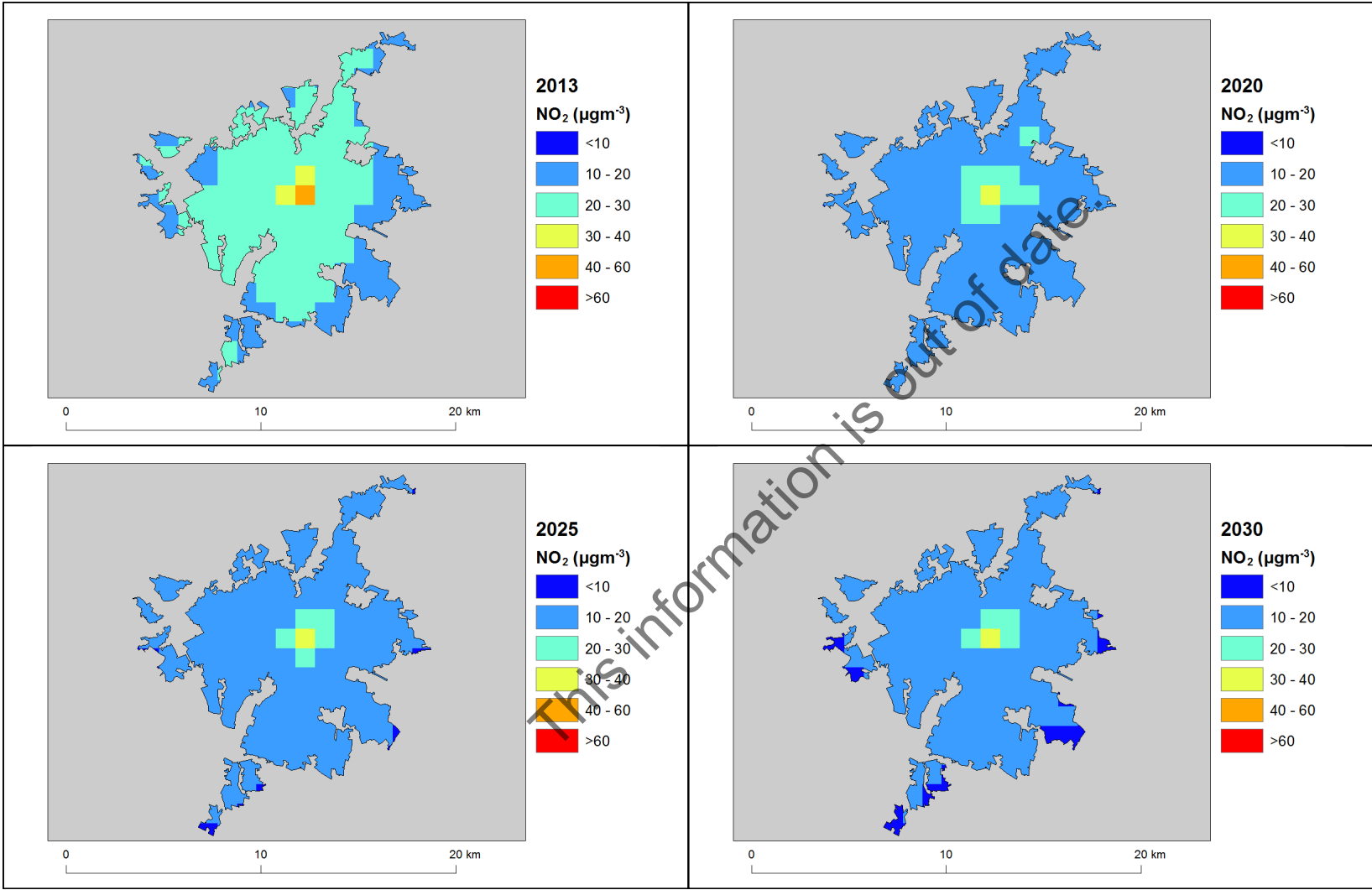
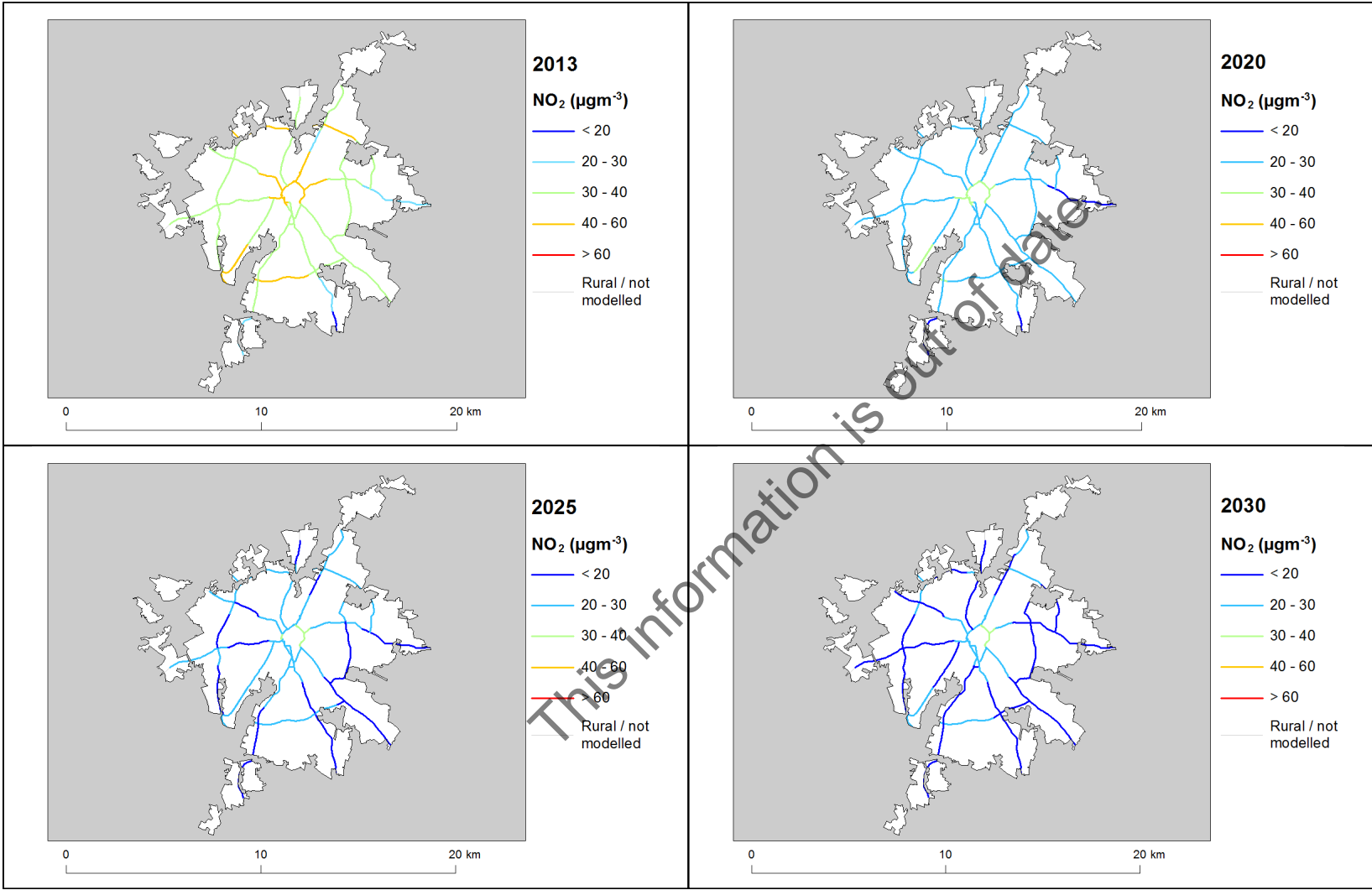


Figure 7: Roadside baseline projections of annual mean NO₂ concentrations in 2020, 2025 and 2030. 2013 is also included here for reference. Modelled exceedances of the annual limit value are shown in orange and red.



Annexes

A References

Air Quality Expert Group (AQEG, 2004). Nitrogen Dioxide in the United Kingdom. <http://uk-air.defra.gov.uk/library/aqeg/publications>

Decision 2004/224/EC. Commission Decision of 20 February 2004 laying down arrangements for the submission of information on plans or programmes required under Council Directive 96/62/EC in relation to limit values for certain pollutants in ambient air. From the Official Journal of the European Union, 6.3.2004, En series, L68/27

Decision 2004/461/EC. Commission Decision of 29 April 2004 laying down a questionnaire to be used for annual reporting on ambient air quality assessment under Council Directives 96/62/EC and 1999/30/EC and under Directives 2000/69/EC and 2002/3/EC of the European Parliament and of the Council. From the Official Journal of the European Union, 30.4.2004, En series, L156/78

Decision 2011/850/EU Commission Implementing Decision of 12 December 2011 laying down rules for Directives 2004/107/EC and 2008/50/EC of the European Parliament and of the Council as regards the reciprocal exchange of information and reporting on ambient air quality. From the Official Journal of the European Union, 17.12.2011, En series, L335/86

CDR Central Data Repository. <http://cdr.eionet.europa.eu/>

Air Quality Directive 2008/50/EC. Council Directive 2008/50/EC, of 21 May 2008. On ambient air quality and cleaner air for Europe. From the Official Journal of the European Union, 11.6.2008, En series, L152/1

1st Daughter Directive 1999/30/EC. Council Directive 1999/30/EC, of 22 April 1999 relating to limit values for sulphur dioxide, nitrogen dioxide and oxides of nitrogen, particulate matter and lead in ambient air (The First Daughter Directive). From the Official Journal of the European Communities, 29.6.1999, En Series, L163/41.

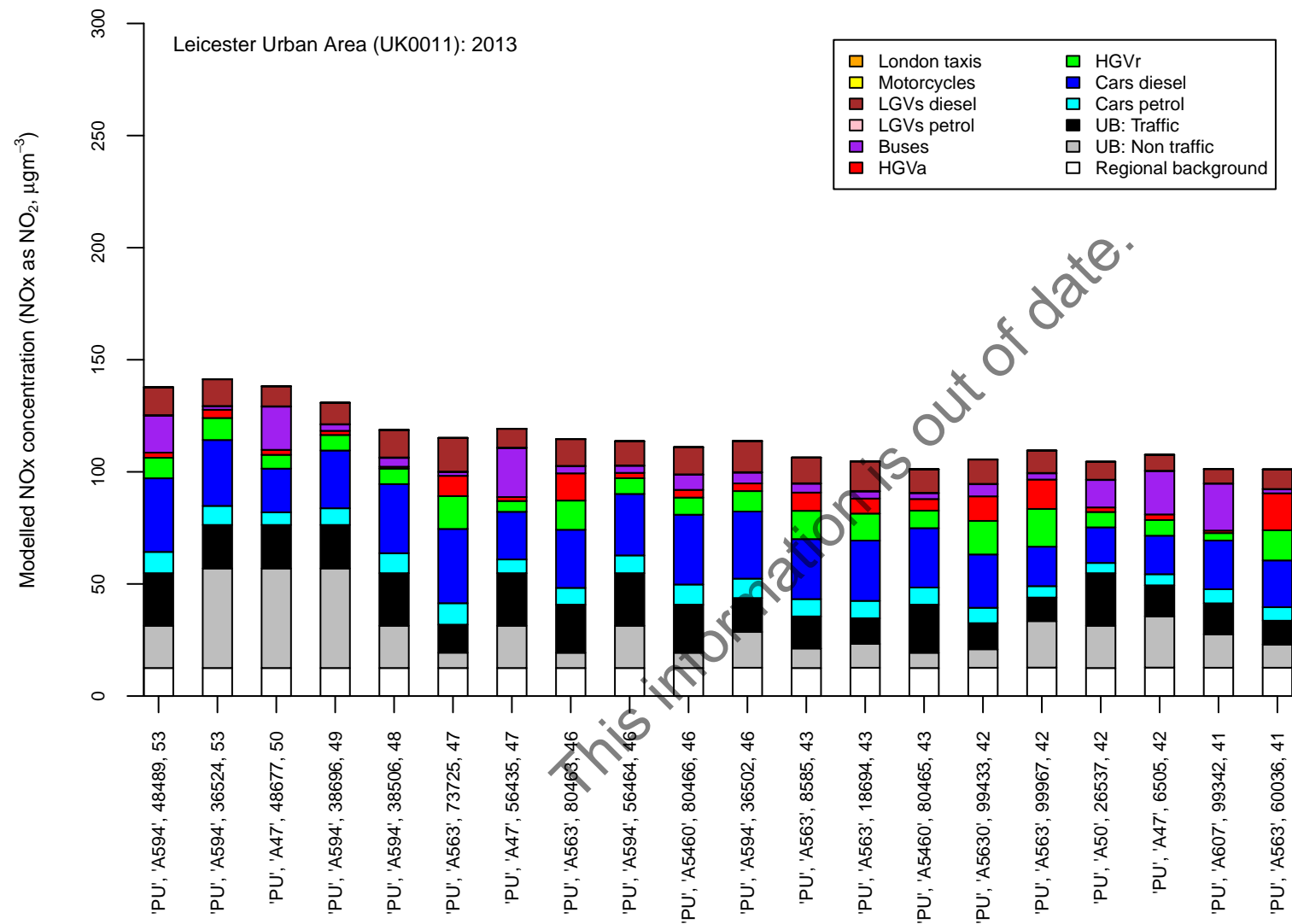
UK overview document, List of UK and National Measures and the UK technical report are available at: <http://www.gov.uk/defra>.

B Source apportionment graphs

Page left blank.

This information is out of date.

Figure B.1: Annual mean roadside NO_x source apportionment plots for all roads exceeding the annual mean NO₂ limit value in 2013.



Road class (MU = motorway, PU = primary road, TU = trunk road), road number, census id 12 and modelled NO₂ concentration (μgm^{-3})

C Tables of measures

Page left blank.

This information is out of date.

Table C.1 Relevant Local Authority measures within Leicester Urban Area (UK0011)

Measure code	Description	Focus	Classification	Status	Other information
Blaby District Council_1	Smart Motorways	Sections of M1	Traffic planning and management: Other measure	Preparation	Start date: 2016 Expected end date: 2025 Spatial scale: Local Source affected: Transport Indicator: N/A Target emissions reduction: N/A
Blaby District Council_2	Painted chevrons	Sections of M1	Traffic planning and management: Other measure	Preparation	Start date: 2016 Expected end date: 2017 Spatial scale: Local Source affected: Transport Indicator: N/A Target emissions reduction: N/A
Blaby District Council_3	Noise barriers	Sections of M1	Traffic planning and management: Other measure	Preparation	Start date: 2016 Expected end date: 2018 Spatial scale: Local Source affected: Transport Indicator: N/A Target emissions reduction: N/A
Blaby District Council_4	VMS	Sections of M1	Public information and Education: Other mechanisms	Preparation	Start date: 2016 Expected end date: 2016 Spatial scale: Local Source affected: Transport Indicator: N/A Target emissions reduction: N/A
Blaby District Council_5	Ecodriving	Sections of M1	Other measure: Other measure	Preparation	Start date: 2016 Expected end date: 2016 Spatial scale: Local Source affected: Transport Indicator: N/A Target emissions reduction: N/A
Blaby District Council_6	Traffic management measures	Certain junctions in AQMAs	Traffic planning and management: Other measure	Preparation	Start date: 2017 Expected end date: 2017 Spatial scale: Local Source affected: Transport Indicator: N/A Target emissions reduction: N/A
Blaby District Council_7	Ramp Metering	Sections of M1	Traffic planning and management: Other measure	Preparation	Start date: 2016 Expected end date: 2025 Spatial scale: Local Source affected: Transport Indicator: N/A Target emissions reduction: N/A

Measure code	Description	Focus	Classification	Status	Other information
Blaby District Council_8	Integration of Air Quality into planning policy	District	Other measure: Other measure	Planning	Start date: 2015 Expected end date: 2016 Spatial scale: Local Source affected: Transport Indicator: N/A Target emissions reduction: N/A
Charnwood Borough Council_1	Eastern Gateway Project:	Construction of a new link road [combined with the closure of Ratcliffe Road (currently in an AQMA) to through-traffic], from Nottingham Road to Meadow Lane on derelict land around Loughborough Rail Station. Enabling much improved access to the station, reducing delay and congestion in the area. Improvements to the station forecourt area, combined with the new link road has enabled greatly improved and consolidated public transport interchange facilities at the station i.e. integrated bus hub, taxi ranks, cycle racks. Associated traffic management improvements to surrounding narrow residential streets, including removing lorries from unsuitable routes and introducing a residents parking scheme.	Traffic planning and management: Improvement of public transport	Evaluation	Start date: 2011 Expected end date: 2011 Spatial scale: Local Source affected: Transport Indicator: N/A Target emissions reduction: N/A
Charnwood Borough Council_2	Loughborough Inner Relief Road	Construction of an inner relief road to redirect all traffic away from the arterial A6 (High Street and Swan Street) allowing for pedestrianisation of the town centre. The scheme incorporates new bus stops and travel information 'waypoints' in the pedestrianised area, consolidated taxi ranks, improved traffic management (control and signage), parking restrictions	Traffic planning and management: Improvement of public transport	Evaluation	Start date: 2014 Expected end date: 2014 Spatial scale: Local Source affected: Transport Indicator: N/A Target emissions reduction: N/A
Charnwood Borough Council_3	Epinal Way Junction	Alterations made to junction layout, providing extra lanes and improved traffic signals to aid traffic flow.	Traffic planning and management: Other measure	Evaluation	Start date: 2014 Expected end date: 2014 Spatial scale: Local Source affected: Transport Indicator: N/A Target emissions reduction: N/A

Measure code	Description	Focus	Classification	Status	Other information
Charnwood Borough Council_4	Put in two electric charge points at Beehive Lane car park Loughborough for public use	N/A	Public procurement: Other measure	Implementation	Start date: 2014 Expected end date: 2014 Spatial scale: Local Source affected: Transport Indicator: Equipment on site and contract in place with contractor to supply to public Target emissions reduction: Not known
Charnwood Borough Council_5	Renew 3 no. street wardens fleet vehicles with 2 electric charge vehicles and one Diesel. Currently have 3 diesel vehicles	N/A	Public procurement: New vehicles, including low emission vehicles	Implementation	Start date: 2015 Expected end date: 2015 Spatial scale: Local Source affected: Transport Indicator: New vehicles on site including 2 electric charge vehicles Target emissions reduction: Not known
Charnwood Borough Council_6	Driver assessments	N/A	Other measure: Other measure	Planning	Start date: 2015 Expected end date: 2030 Spatial scale: Local Source affected: Transport Indicator: Reduction in fuel consumption Target emissions reduction: Not Known
Charnwood Borough Council_7	Investment in cycle route network to reach all parts of Loughborough	N/A	Traffic planning and management: Expansion of bicycle and pedestrian infrastructure	Other	Start date: 2007 Expected end date: 2030 Spatial scale: Local Source affected: Transport Indicator: Monitoring of %age increase in cycling at counting points across Loughborough Target emissions reduction: Not known
Charnwood Borough Council_8	Evaluation of fewer parking spaces or higher charges to restrain car access to work or shops	N/A	Traffic planning and management: Management of parking places	Other	Start date: 2007 Expected end date: 2030 Spatial scale: Local Source affected: Transport Indicator: Incorporating the effectiveness of Civil Parking Enforcement (CPE) Target emissions reduction: Not known

Measure code	Description	Focus	Classification	Status	Other information
Charnwood Borough Council_9	Staff Car sharing scheme	N/A	Other measure: Other measure	Other	Start date: 2005 Expected end date: 2030 Spatial scale: Local Source affected: Transport Indicator: N/A Target emissions reduction: N/A
Charnwood Borough Council_10	CO2 banding for staff car parking allowance / permits	N/A	Traffic planning and management: Differentiation of parking fees	Other	Start date: 2005 Expected end date: 2030 Spatial scale: Local Source affected: Transport Indicator: N/A Target emissions reduction: N/A
Charnwood Borough Council_11	Increasing bus travel through work on Quality Bus Partnership (QBP)	N/A	Traffic planning and management: Improvement of public transport	Other	Start date: 2007 Expected end date: 2030 Spatial scale: Local Source affected: Transport Indicator: N/A Target emissions reduction: N/A
Charnwood Borough Council_12	Birstall 'Park & Ride'	N/A	Traffic planning and management: Improvement of public transport	Other	Start date: 2011 Expected end date: 2030 Spatial scale: Local Source affected: Transport Indicator: N/A Target emissions reduction: N/A
Charnwood Borough Council_13	Voluntary public emission testing with VOSA	N/A	Public information and Education: Other mechanisms	Other	Start date: 2006 Expected end date: 2030 Spatial scale: Local Source affected: Transport Indicator: N/A Target emissions reduction: N/A
Charnwood Borough Council_14	Increasing travel by train with bus connections to town centre and key destinations	N/A	Traffic planning and management: Improvement of public transport	Other	Start date: 2006 Expected end date: 2030 Spatial scale: Whole town or city Source affected: Transport Indicator: N/A Target emissions reduction: N/A
Charnwood Borough Council_15	Personalised Travel Planning and Accessibility Team set up to promote sustainable travel choices	N/A	Traffic planning and management: Encouragement of shift of transport modes	Other	Start date: 2009 Expected end date: 2030 Spatial scale: Whole town or city Source affected: Transport Indicator: N/A Target emissions reduction: N/A

Measure code	Description	Focus	Classification	Status	Other information
Charnwood Borough Council_16	Network management for roadworks, incidents, and planned events	N/A	Traffic planning and management: Other measure	Other	Start date: 2007 Expected end date: 2030 Spatial scale: Whole town or city Source affected: Transport Indicator: N/A Target emissions reduction: N/A
Charnwood Borough Council_17	School Travel Planning	N/A	Traffic planning and management: Encouragement of shift of transport modes	Other	Start date: 2007 Expected end date: 2030 Spatial scale: Whole town or city Source affected: Transport Indicator: Schools with travel plans in place and monitoring the % of journeys to school as the only pupil Target emissions reduction: N/A
Charnwood Borough Council_18	Providing more consistent and reliable journey times	N/A	Traffic planning and management: Other measure	Evaluation	Start date: 2014 Expected end date: 2030 Spatial scale: Whole agglomeration Source affected: Transport Indicator: Average vehicle speeds (weekday morning peak) Target emissions reduction: N/A
Charnwood Borough Council_19	Following completion of Town Centre Improvement Scheme, review TRO arrangements and signal operations at key junctions in / around town	N/A	Traffic planning and management: Other measure	Planning	Start date: 2017 Expected end date: 2030 Spatial scale: Whole town or city Source affected: Transport Indicator: N/A Target emissions reduction: N/A
Charnwood Borough Council_20	Programme of network signing improvements (including de-cluttering)	N/A	Traffic planning and management: Other measure	Planning	Start date: 2017 Expected end date: 2030 Spatial scale: Whole town or city Source affected: Transport Indicator: N/A Target emissions reduction: N/A
Leicester City Council_1	01.Air Quality Action Plan	Upgraded Air Quality Plan for Leicester	Other measure: Other measure	Implementation	Start date: 2015 Expected end date: 2025 Spatial scale: Whole town or city Source affected: Transport Indicator: Review in 2018 and 2023 Target emissions reduction: < 1%
Leicester City Council_2	1. AQGS LestAIR	Low Emission Strategy study for Leicester	Other measure: Other measure	Evaluation	Start date: 2012 Expected end date: 2012 Spatial scale: Whole town or city Source affected: Transport Indicator: Final report delivered Target emissions reduction: <0.1 %

Measure code	Description	Focus	Classification	Status	Other information
Leicester City Council_3	1. To lobby and work with Central Government	Improving the air quality through dialogue with Central government	Other measure: Other measure	Implementation	Start date: 2015 Expected end date: 2025 Spatial scale: Whole town or city Source affected: Transport Indicator: Response to the reports from Central government Target emissions reduction: <0.1%
Leicester City Council_4	02a. Reduction of bus emissions _Breathe I	Retrofitting of 32 buses on Melton road corridor	Public procurement: Other measure	Implementation	Start date: 2013 Expected end date: 2017 Spatial scale: Local Source affected: Transport Indicator: No of buses retrofitted Target emissions reduction: <0.5%
Leicester City Council_5	02b. Reduction of bus emissions _Breathe II	Retrofitting 5 buses from Centerbus fleet on Melton road corridor	Other measure: Other measure	Implementation	Start date: 2014 Expected end date: 2018 Spatial scale: Local Source affected: Transport Indicator: No of buses retrofitted Target emissions reduction: <0.1%
Leicester City Council_6	03a. Low emission zone for buses	Emission standards for buses using new Haymarket Bus Station	Traffic planning and management: Low emission zones	Evaluation	Start date: 2017 Expected end date: 2018 Spatial scale: Whole town or city Source affected: Transport Indicator: LEZ Buses in place Target emissions reduction: <0.1%
Leicester City Council_7	03b. Ultra Low emission zone	LestAir AQGS project	Traffic planning and management: Low emission zones	Evaluation	Start date: 2022 Expected end date: 2025 Spatial scale: Whole town or city Source affected: Transport Indicator: ULEZ in place Target emissions reduction: <0.1%
Leicester City Council_8	4. Investigation to introduce gas powered buses	AQGS bid - business case to investigate an introduction of gas powered buses in Leicester	Public procurement: Other measure	Preparation	Start date: 2015 Expected end date: 2015 Spatial scale: Whole town or city Source affected: Transport Indicator: Delivery of final report Target emissions reduction: <0.0%
Leicester City Council_9	5. Encourage bus, taxi and freight operators to introduce LEV's	OLEV bids to introduce LEVs to Leicester - taxis, buses	Public procurement: New vehicles, including low emission vehicles	Planning	Start date: 2015 Expected end date: 2025 Spatial scale: Whole town or city Source affected: Transport Indicator: Obtaining grant for LEVs Target emissions reduction: <0.1%

Measure code	Description	Focus	Classification	Status	Other information
Leicester City Council_10	06a. FQP - Improved freight operations	Freight operators in Leicester and Leicestershire	Other measure: Other measure	Implementation	Start date: 2001 Expected end date: 2030 Spatial scale: Whole agglomeration Source affected: Transport Indicator: Dialog between LCC and freight operators Target emissions reduction: <0.01%
Leicester City Council_11	06b. Investigate urban freight consolidation centre	AQGS project : Revised air quality action plan interventions	Traffic planning and management: Freight transport measure	Evaluation	Start date: 2017 Expected end date: 2017 Spatial scale: Whole agglomeration Source affected: Transport Indicator: Final report delivered Target emissions reduction: <0.1%
Leicester City Council_12	06b. Partnership with bus operators	Quality Bus Partnership with bus operators in Leicester	Public procurement: Other measure	Implementation	Start date: 2001 Expected end date: 2023 Spatial scale: Whole agglomeration Source affected: Transport Indicator: Dialog between LCC and bus operators Target emissions reduction: <0.1%
Leicester City Council_13	7. Greener driving training for LCC and others	Cleaner driving aimed at reducing pollution	Other measure: Other measure	Implementation	Start date: 2008 Expected end date: 2030 Spatial scale: Whole agglomeration Source affected: Transport Indicator: Ongoing project Target emissions reduction: <0.1%
Leicester City Council_14	8. Promote ULEV infrastructure (OLEV)	Electric cars, Plugged In Places, installation of charging points for electric vehicles	Public procurement: New vehicles, including low emission vehicles	Planning	Start date: 2012 Expected end date: 2030 Spatial scale: Whole agglomeration Source affected: Transport Indicator: No of electric sockets installed Target emissions reduction: <0.1%
Leicester City Council_15	9. Fuelling Infrastructure incl. shared arrangements	AQGS study for gas powered buses	Public procurement: Other measure	Planning	Start date: 2015 Expected end date: 2015 Spatial scale: Whole agglomeration Source affected: Transport Indicator: Final report delivered Target emissions reduction: <0.1%
Leicester City Council_16	10. Progressive reduction in emissions from LCC fleet	LCC fleet reviews	Public procurement: Other measure	Implementation	Start date: 2001 Expected end date: 2030 Spatial scale: Whole town or city Source affected: Transport Indicator: Annual reports Target emissions reduction: <0.1%

Measure code	Description	Focus	Classification	Status	Other information
Leicester City Council_17	10. Electric vehicles trial	Trial of 2 electric vehicles in LCC fleet	Other measure: Other measure	Implementation	Start date: 2014 Expected end date: 2015 Spatial scale: Local Source affected: Transport Indicator: Uptake of 2 electric vehicles Target emissions reduction: <0.1%
Leicester City Council_18	10. Essential user status review	Reduce the no of vehicles used by staff	Other measure: Other measure	Implementation	Start date: 2014 Expected end date: 2015 Spatial scale: Whole town or city Source affected: Transport Indicator: Assessment completed Target emissions reduction: <0.1%
Leicester City Council_19	10. LCC Fleet Review	Review of council fleet	Other measure: Other measure	Implementation	Start date: 2014 Expected end date: 2015 Spatial scale: Whole town or city Source affected: Transport Indicator: Finished assessment of the whole fleet Target emissions reduction: <0.1%
Leicester City Council_20	11. Reduce harmful emissions from taxis	Licensing Policy - taxis to Euro IV standard receive 50% discount on licensing fee	Permit systems and economic instruments: Introduction/increase of environment taxes	Implementation	Start date: 2008 Expected end date: 2030 Spatial scale: Whole town or city Source affected: Transport Indicator: No of licences issued Target emissions reduction: <0.2%
Leicester City Council_21	12. Support electrification of Midland Main Line	Electrification of Midland Mainline through Leicester	Public procurement: Other measure	Other	Start date: 2012 Expected end date: 2020 Spatial scale: Local Source affected: Transport Indicator: Electrification complete Target emissions reduction: <0.1%
Leicester City Council_22	13. Implement Sustainable Public Procurement Guide	LCC Procurement Guide	Other measure: Other measure	Preparation	Start date: 2015 Expected end date: 2015 Spatial scale: Whole town or city Source affected: Transport Indicator: New guide delivered Target emissions reduction: <0.1%

Measure code	Description	Focus	Classification	Status	Other information
Leicester City Council_23	14. Phase II Connecting Leicester - Walking & Cycling	A scheme to create connections to provide a safe, family and pedestrian orientated city centre. Connecting the different parts of the city centre and reducing the dominance of roads to create an attractive environment for local people to enjoy their historic city. It will also help businesses to flourish and attract new visitors.	Traffic planning and management: Encouragement of shift of transport modes	Implementation	Start date: 2015 Expected end date: 2019 Spatial scale: Whole town or city Source affected: Other, please specify Indicator: Scheme implemented Target emissions reduction: <0.1%
Leicester City Council_24	14. Cycling routes	Connecting Leicester	Traffic planning and management: Encouragement of shift of transport modes	Implementation	Start date: 2012 Expected end date: 2030 Spatial scale: Whole town or city Source affected: Transport Indicator: No of Cycling routes implemented Target emissions reduction: <0.5%
Leicester City Council_25	15. Carbon action planning and the behavioural change	Planning for addressing the behavioural change	Other measure: Other measure	Implementation	Start date: 2014 Expected end date: 2015 Spatial scale: Whole town or city Source affected: Transport Indicator: No of actions implemented Target emissions reduction: <0.01%
Leicester City Council_26	15. Continue to increase the number of children walking and cycling to school walking and cycling to school through the Walk to School and Bike It programmes, further to the 16.7% overall increase achieved last year	Promoting walking and cycling to schools	Traffic planning and management: Encouragement of shift of transport modes	Implementation	Start date: 2014 Expected end date: 2015 Spatial scale: Whole town or city Source affected: Transport Indicator: No of children engaged Target emissions reduction: <0.01%
Leicester City Council_27	15. Council home working and flexible hours	N/A	Other measure: Other measure	Implementation	Start date: 2008 Expected end date: 2030 Spatial scale: Whole agglomeration Source affected: Transport Indicator: Scheme implemented Target emissions reduction: <0.1%
Leicester City Council_28	15. Leicester City Council website	Air Quality information - updated website	Public information and Education: Internet	Implementation	Start date: 2015 Expected end date: 2015 Spatial scale: Whole town or city Source affected: Other, please specify Indicator: Updated website Target emissions reduction: <0.1%

Measure code	Description	Focus	Classification	Status	Other information
Leicester City Council_29	15. Engage 100 small businesses to carry out staff cycle training charity B-Inspired, providing staff cycle training and advice on how to reduce business travel by car	Promoting alternative modes of transport	Traffic planning and management: Encouragement of shift of transport modes	Implementation	Start date: 2014 Expected end date: 2015 Spatial scale: Whole town or city Source affected: Transport Indicator: No of businesses engaged Target emissions reduction: <0.01%
Leicester City Council_30	15. Host a number of green events at Curve theatre throughout the year including National Recycling Week by promoting recycling to both staff and visitors, and Earth Hour	Public Information	Traffic planning and management: Encouragement of shift of transport modes	Implementation	Start date: 2014 Expected end date: 2015 Spatial scale: Whole town or city Source affected: Transport Indicator: No of events organised Target emissions reduction: <0.01%
Leicester City Council_31	15. Involve 40,000 employees through the Large Employers' engagement programme Employers Engagement Programme, running travel roadshows to encourage behavioural change	Promoting alternative modes of transport	Traffic planning and management: Encouragement of shift of transport modes	Implementation	Start date: 2014 Expected end date: 2015 Spatial scale: Whole town or city Source affected: Transport Indicator: Engagement with employers Target emissions reduction: <0.1%
Leicester City Council_32	15. Involve over 25,000 people in organised bike rides cycling activity events through our Summer of Cycling programme. This will include the Ride Leicester Festival which will have the Castle Classic race and family-friendly Sky Ride	Annual bike rides organised - Skyride	Traffic planning and management: Encouragement of shift of transport modes	Implementation	Start date: 2014 Expected end date: 2015 Spatial scale: Whole town or city Source affected: Transport Indicator: Engagement of general public Target emissions reduction: <0.1%
Leicester City Council_33	15. JOAQUIN European Project	EU funded project, information to general public about AQ - website. Also information to policy makers about improving AQ through various schemes and tools	Other measure: Other measure	Evaluation	Start date: 2011 Expected end date: 2015 Spatial scale: Whole town or city Source affected: Transport Indicator: Website for general public, Decision making tool for AQ specialists Target emissions reduction: <0.1%

Measure code	Description	Focus	Classification	Status	Other information
Leicester City Council_34	15. Leicestershire Sustainable Travel Challenge web site	Promoting walking, cycling , public transport and care share	Traffic planning and management: Encouragement of shift of transport modes	Implementation	Start date: 2014 Expected end date: 2016 Spatial scale: Whole agglomeration Source affected: Transport Indicator: No of people who joined the website Target emissions reduction: <0.1%
Leicester City Council_35	15. Personal route planner	Individual travel plans	Traffic planning and management: Encouragement of shift of transport modes	Implementation	Start date: 2007 Expected end date: 2017 Spatial scale: Whole agglomeration Source affected: Transport Indicator: No of plans completed Target emissions reduction: <0.1%
Leicester City Council_36	15. Provide local businesses with grants of up to £5,000 to put towards sustainable transport methods for staff such as pool bike systems and shuttle buses	Promoting alternative modes of transport	Traffic planning and management: Encouragement of shift of transport modes	Implementation	Start date: 2014 Expected end date: 2015 Spatial scale: Whole town or city Source affected: Transport Indicator: Grants provided Target emissions reduction: <0.01%
Leicester City Council_37	15. Secure funding to complete an Area Wide Travel Plan Travel Plan for the creative industries in the Cultural Quarter to promote car sharing, cycling and cut congestion	Travel plan	Traffic planning and management: Encouragement of shift of transport modes	Implementation	Start date: 2015 Expected end date: 2015 Spatial scale: Whole town or city Source affected: Transport Indicator: Completion of the travel plan Target emissions reduction: <0.01%
Leicester City Council_38	15. Sign up a further 1,500 people to Leics. Car Share Scheme Leicestershire, a car sharing scheme aiming to reduce the number of single occupancy vehicles in the city	Promoting car sharing	Traffic planning and management: Encouragement of shift of transport modes	Implementation	Start date: 2014 Expected end date: 2015 Spatial scale: Whole agglomeration Source affected: Transport Indicator: No of people signed for the scheme Target emissions reduction: <0.1%
Leicester City Council_39	15. Travel Planning	Plans in place to reduce single vehicle occupancy, increase the number of sustainable modes of travel and rise awareness	Traffic planning and management: Encouragement of shift of transport modes	Implementation	Start date: 2001 Expected end date: 2030 Spatial scale: Whole town or city Source affected: Transport Indicator: % of change in mode of travel Target emissions reduction: <0.1%

Measure code	Description	Focus	Classification	Status	Other information
Leicester City Council_40	15. Walking promotion	Promoting walking : Ramblers, Livingstreets, Sustrans	Traffic planning and management: Encouragement of shift of transport modes	Implementation	Start date: 2011 Expected end date: 2030 Spatial scale: Whole town or city Source affected: Transport Indicator: No of people joining walks, walking to school, % shift in behavioural change Target emissions reduction: <0.1%
Leicester City Council_41	16. Improved bus facilities and circulation	New Bus Station - Haymarket	Traffic planning and management: Improvement of public transport	Implementation	Start date: 2015 Expected end date: 2015 Spatial scale: Local Source affected: Transport Indicator: Scheme implemented Target emissions reduction: <0.1%
Leicester City Council_42	16. Improved buses	Lower floor buses	Traffic planning and management: Improvement of public transport	Implementation	Start date: 2001 Expected end date: 2014 Spatial scale: Whole town or city Source affected: Transport Indicator: No of buses with low floors Target emissions reduction: <0.1%
Leicester City Council_43	16. Park and Ride schemes	2 new Park and Ride car parks opened since 2008	Traffic planning and management: Encouragement of shift of transport modes	Implementation	Start date: 2001 Expected end date: 2011 Spatial scale: Whole town or city Source affected: Transport Indicator: 2 new park and ride car parks implemented Target emissions reduction: <0.1%
Leicester City Council_44	16. Subsidised bus fares	Subsidised bus fares for elderly, disabled and jobseekers	Traffic planning and management: Encouragement of shift of transport modes	Implementation	Start date: 2001 Expected end date: 2030 Spatial scale: Whole agglomeration Source affected: Transport Indicator: No of concessionary bus pass card holders Target emissions reduction: 0.001
Leicester City Council_45	16. Public Transport Information	Real time information system	Traffic planning and management: Improvement of public transport	Implementation	Start date: 2015 Expected end date: 2016 Spatial scale: Whole agglomeration Source affected: Transport Indicator: City wide system available Target emissions reduction: <0.1%

Measure code	Description	Focus	Classification	Status	Other information
Leicester City Council_46	16. Off bus ticketing	Smart ticketing project	Traffic planning and management: Improvement of public transport	Implementation	Start date: 2008 Expected end date: 2030 Spatial scale: Whole agglomeration Source affected: Transport Indicator: City wide system in place Target emissions reduction: <0.01%
Leicester City Council_47	17. Bikeability	Cycle training for children	Traffic planning and management: Encouragement of shift of transport modes	Implementation	Start date: 2008 Expected end date: 2030 Spatial scale: Whole town or city Source affected: Transport Indicator: 1800 children to participate Target emissions reduction: <0.1%
Leicester City Council_48	17. Bike parks at events	To provide bike parts at festivals	Traffic planning and management: Encouragement of shift of transport modes	Implementation	Start date: 2008 Expected end date: 2030 Spatial scale: Whole town or city Source affected: Transport Indicator: 50 bike parking spaces at events Target emissions reduction: <0.1%
Leicester City Council_49	17. Ride Festival in Leicester	Castle classic bike ride	Traffic planning and management: Encouragement of shift of transport modes	Implementation	Start date: 2008 Expected end date: 2030 Spatial scale: Whole town or city Source affected: Transport Indicator: 500 participants per ride Target emissions reduction: <0.1%
Leicester City Council_50	17. Led Rider Programme	Organised bike rides	Traffic planning and management: Encouragement of shift of transport modes	Implementation	Start date: 2008 Expected end date: 2030 Spatial scale: Whole town or city Source affected: Transport Indicator: 35 public rides Target emissions reduction: <0.1%
Leicester City Council_51	18. Enforcing speed limits	Leicester and Leicestershire Road Safety Partnership	Traffic planning and management: Other measure	Implementation	Start date: 2001 Expected end date: 2030 Spatial scale: Whole agglomeration Source affected: Transport Indicator: No of schemes introduced Target emissions reduction: <0.1%
Leicester City Council_52	18. Junction improvements	Pork Pie scheme	Traffic planning and management: Other measure	Implementation	Start date: 2007 Expected end date: 2008 Spatial scale: Local Source affected: Transport Indicator: Scheme implemented Target emissions reduction: <0.1%

Measure code	Description	Focus	Classification	Status	Other information
Leicester City Council_53	18. Junction improvements	The Ravensbridge Drive junction improvement	Traffic planning and management: Other measure	Implementation	Start date: 2007 Expected end date: 2008 Spatial scale: Local Source affected: Transport Indicator: Scheme implemented Target emissions reduction: <0.1%
Leicester City Council_54	18. Junction improvements	Melton Road/Troon way junction improvement	Traffic planning and management: Other measure	Evaluation	Start date: 2007 Expected end date: 2008 Spatial scale: Local Source affected: Transport Indicator: Scheme implemented Target emissions reduction: <0.1%
Leicester City Council_55	18. Junction improvements	St Nicholas Place junction improvement	Traffic planning and management: Other measure	Implementation	Start date: 2007 Expected end date: 2008 Spatial scale: Local Source affected: Transport Indicator: Scheme implemented Target emissions reduction: <0.1%
Leicester City Council_56	18. Junction improvements	Ayelstone Road/ A426 improvements	Traffic planning and management: Other measure	Implementation	Start date: 2014 Expected end date: 2015 Spatial scale: Local Source affected: Transport Indicator: Scheme implemented Target emissions reduction: <0.1%
Leicester City Council_57	18. Junction improvements	A47 Humberstone Road - 4 major junctions improvements	Traffic planning and management: Other measure	Implementation	Start date: 2007 Expected end date: 2008 Spatial scale: Local Source affected: Transport Indicator: Scheme implemented Target emissions reduction: <0.1%
Leicester City Council_58	18. Junction improvements	Safron lane /Sturdee Road improvements	Traffic planning and management: Other measure	Implementation	Start date: 2007 Expected end date: 2008 Spatial scale: Local Source affected: Transport Indicator: Scheme implemented Target emissions reduction: <0.1%

Measure code	Description	Focus	Classification	Status	Other information
Leicester City Council_59	18. Management of congestion from works /events	There are three groups that manage this measure (which also forms part of the TMA Action Plan). These are: Events Advisory Group - this meets monthly with organisers and stakeholders such as the emergency services to plan events in detail to minimise disruption. This is managed with the support Transport Systems which advise on traffic management and the Area Traffic Control room is used for large events e.g. Diwali, Caribbean Carnival etc. NRSWA Co-ordination Group - this meets quarterly and discusses the programme of works which includes Council, Utility, Developers and County Council works which may have an effect on the City. Work programmes are agreed to avoid clashes and reduce disruption. Monthly Traffic Management Meetings - these monthly meetings include the bus companies, emergency services and other agencies discuss traffic management in detail of projects that affect the highway network. The Council employs a Utilities NRSWA Co-ordinator who manages the Street Work Register [a statutory requirement]. This enables all proposed works to be effectively co-ordinated in the short and medium term.	Traffic planning and management: Other measure	Implementation	Start date: 2007 Expected end date: 2030 Spatial scale: Local Source affected: Transport Indicator: No of roadworks and events Target emissions reduction: <0.1%
Leicester City Council_60	18. Reallocation of road space	A426 Aylestone road - bus priority lane	Traffic planning and management: Improvement of public transport	Implementation	Start date: 2011 Expected end date: 2014 Spatial scale: Local Source affected: Transport Indicator: No of schemes completed Target emissions reduction: <0.1%

Measure code	Description	Focus	Classification	Status	Other information
Leicester City Council_61	18. Reallocation of road space	The Pedestrian Preference Zone order has been completed and is in operation. Gallowtree Gate, Market Street and Hotel Street have been completed. The next and final stages of the project include: Belvoir Street, Clock Tower / East Gates, High Street, Granby Street, Market Place. This will be completed by September 2008. This work is being carried out to support the huge investment in regeneration and construction, and in conjunction with the development of Highcross Leicester (the extended Shires Shopping Centre); creating a large traffic free area, which will be safe and pollution free - making visiting the city centre a pleasure and complementing the new shopping centre.	Traffic planning and management: Encouragement of shift of transport modes	Implementation	Start date: 2014 Expected end date: 2018 Spatial scale: Local Source affected: Transport Indicator: No of schemes completed Target emissions reduction: <0.1%

This information is out of date.

Measure code	Description	Focus	Classification	Status	Other information
Leicester City Council_62	18. Reallocation of road space	<p>Quality Bus Corridors: Saffron Lane - Phase 1; Pork Pie Island scheme completed in 2007/08.</p> <p>Abbey Lane -</p> <p>Ravensbridge Drive junction improvements complete in 2007/08.</p> <p>Melton Road - Melton Road/Troon Way junction improvement scheme complete.</p> <p>Improvements to the A47 Humberston Road QBC Phase 1 complete. City Centre bus, pedestrian and cycle improvements -</p> <p>From early 2006, Leicester City Council has been working on its 'Streets + Spaces' and Connecting Leicester programmes to develop the streets and spaces in the city centre. Streets + Spaces include creating a new bus corridor to the north of the city centre; pedestrianising High Street, Clock Tower, Market Place approach the Lanes area and Market Street. Many streets will also be rebuilt to a new high quality standard, using granite paving, new street furniture and designs which will create clean, uncluttered streets and spaces.</p>	Traffic planning and management: Improvement of public transport	Implementation	<p>Start date: 2007</p> <p>Expected end date: 2030</p> <p>Spatial scale: Local</p> <p>Source affected: Transport</p> <p>Indicator: No of schemes completed</p> <p>Target emissions reduction: <0.1%</p>
Leicester City Council_63	18. Replace further 11,000 sodium street lights with LEDs	Road infrastructure	Traffic planning and management: Other measure	Implementation	<p>Start date: 2014</p> <p>Expected end date: 2015</p> <p>Spatial scale: Whole town or city</p> <p>Source affected: Transport</p> <p>Indicator: No of lamps replaced</p> <p>Target emissions reduction: <0.01%</p>
Leicester City Council_64	18. Replace traffic signals at 129 sites with more efficient LEDs	Road infrastructure	Traffic planning and management: Other measure	Implementation	<p>Start date: 2014</p> <p>Expected end date: 2015</p> <p>Spatial scale: Whole town or city</p> <p>Source affected: Transport</p> <p>Indicator: No of lights replaced</p> <p>Target emissions reduction: <0.01%</p>

Measure code	Description	Focus	Classification	Status	Other information
Leicester City Council_65	18. Traffic calming/diverting rat runs	Traffic calming schemes are implemented in 20 mph zones to ensure the enforcement	Traffic planning and management: Reduction of speed limits and control	Implementation	Start date: 2001 Expected end date: 2023 Spatial scale: Local Source affected: Transport Indicator: Scheme implemented Target emissions reduction: <0.1%
Leicester City Council_66	19. Deliver programme of 20 MPH zones	80 zones to be implemented in areas around schools and residential areas	Traffic planning and management: Reduction of speed limits and control	Implementation	Start date: 2001 Expected end date: 2023 Spatial scale: Local Source affected: Transport Indicator: No of schemes implemented Target emissions reduction: <0.1%
Leicester City Council_67	20. Discounted parking charges for LEV's	Reduced charges for LEV	Traffic planning and management: Differentiation of parking fees	Implementation	Start date: 2015 Expected end date: 2030 Spatial scale: Local Source affected: Transport Indicator: Scheme in place Target emissions reduction: <0.1%
Leicester City Council_68	21. Preparation of new Leicester Local Plan	Leicester Local Plan	Other measure: Other measure	Preparation	Start date: 2015 Expected end date: 2016 Spatial scale: Whole town or city Source affected: Transport Indicator: Plan in place Target emissions reduction: <0.1%