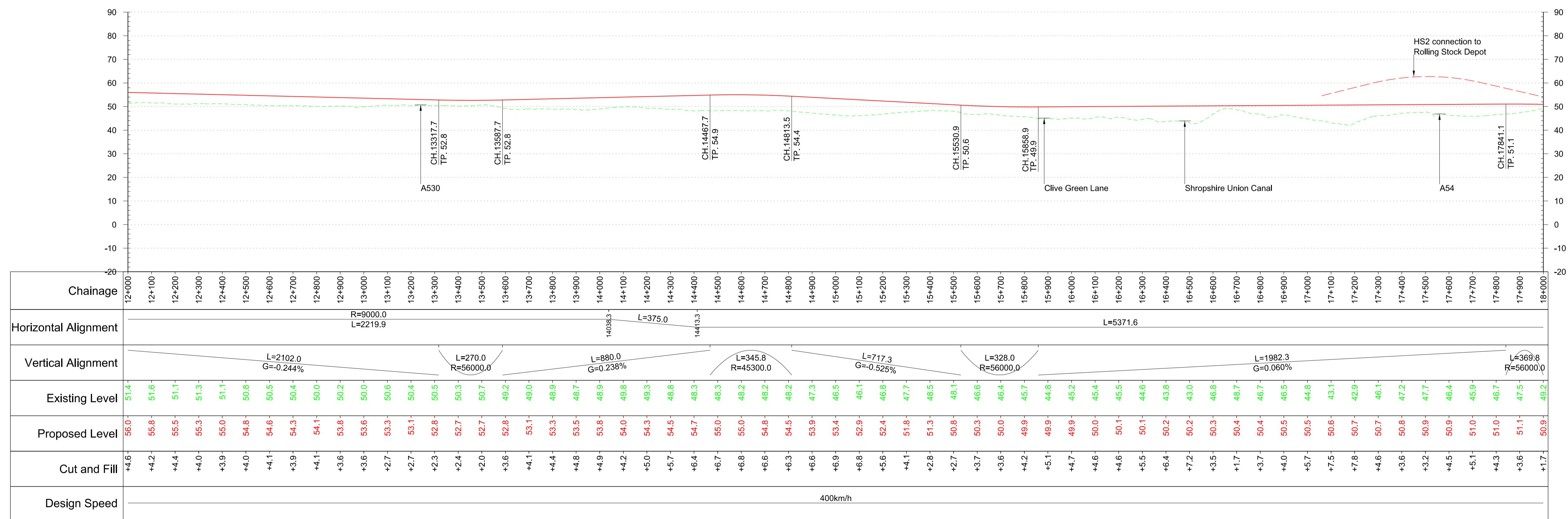
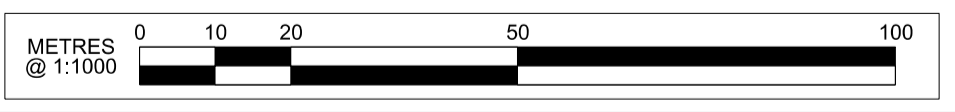
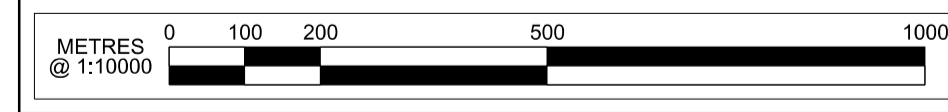


Plan
Scale 1:10,000 @ A1



Profile
Scale H:1:10,000 V:1:1000 @ A1



P02	Updated for acceptance	KB	TO	JG	11/07/17	11/07/17	11/07/17
P01	First Issue	KB	TO	JG	15/06/17	15/06/17	15/06/17
Rev	Description	Drawn	Checked	Con App	HS2 App	Scale with caution as distortion can occur.	

Key Environmental Features Legend

- World Heritage Site
- Ramsar
- Special Areas of Conservation
- Special Protection Areas
- SSSI
- National Nature Reserves
- Area of Outstanding Natural Beauty
- National Park
- Major Development Sites
- Additional Development Sites
- Scheduled Monuments
- Registered Parks and Gardens
- Historical Battlefields
- Active and/or Authorised Landfill
- Historical Landfill
- Flood Zones
- Listed Building Grade I
- Listed Building Grade II*
- Listed Building Grade II

Legend

- Track Centrelines
- Viaduct
- Tunnel
- Existing Railway Connection
- HS2 Connection
- Fully Retained Cutting/Fill
- Major Contour
- Ground Profile
- Track Profile
- Minor Contour
- Node
- Engineering Earthworks
- Railway Cutting
- Railway Embankment
- HS2 Depot/Station Operational Boundary

Registered in England
Registration No. 06791686
Registered office:
2 Snow Hill,
Queensway,
Birmingham, B4 6GA

Creator/Organator
AECOM

Zone
Manchester Leg North of Crewe

Design Stage
Post-Consultation

Drawing Title
2017 Preferred Route - HSM10B

Plan and Profile
Sheet 3 of 6

Project/Contract
West Midlands to Manchester Route

Discipline/Function
Railway Track

Drawn
KB

Checked
TO

Approved
JG

Date
15/06/2017

Scale
AS SHOWN

Size
A1

Drawing No.
C320-AEC-RT-DPP-220-068103

Rev.
P02