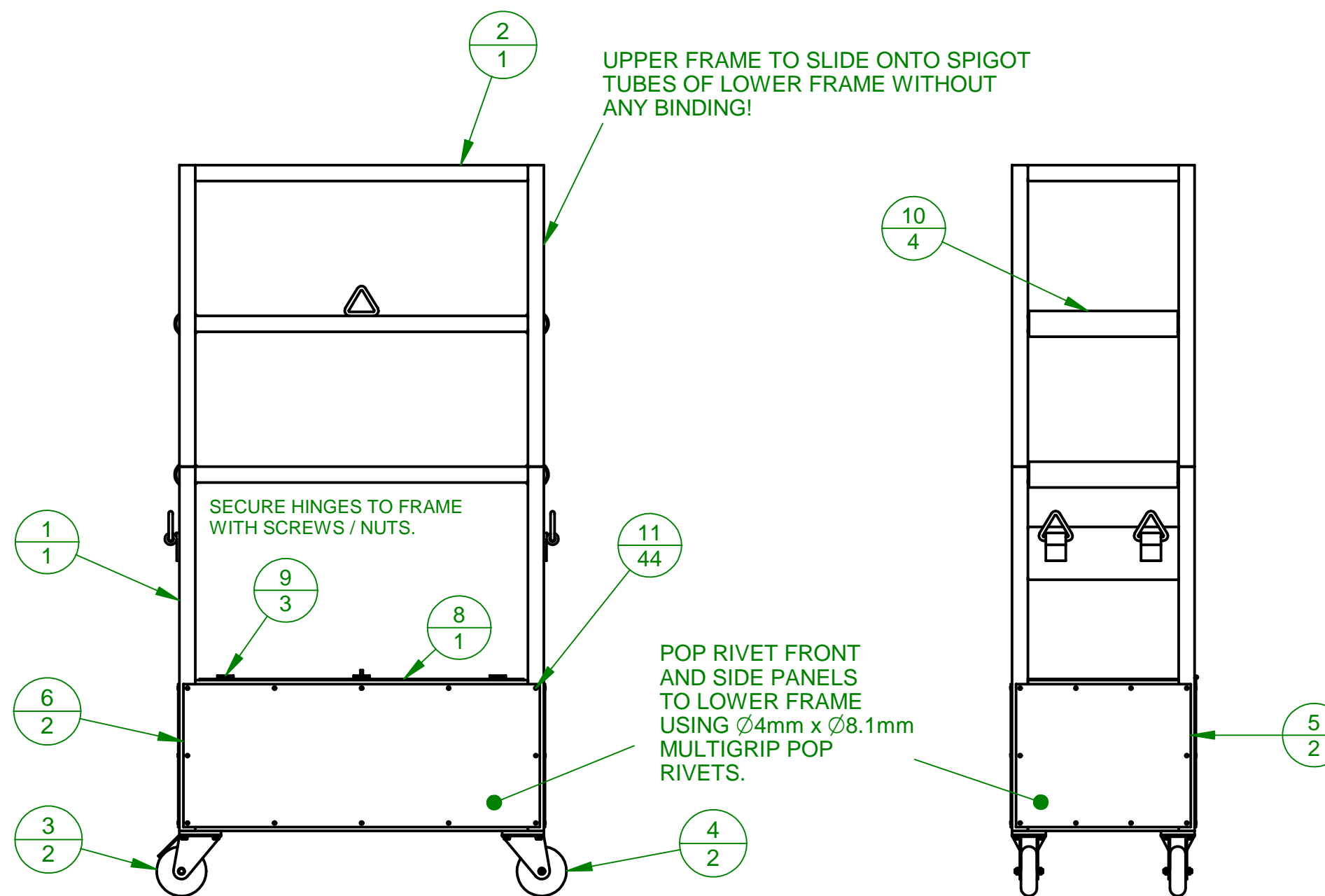
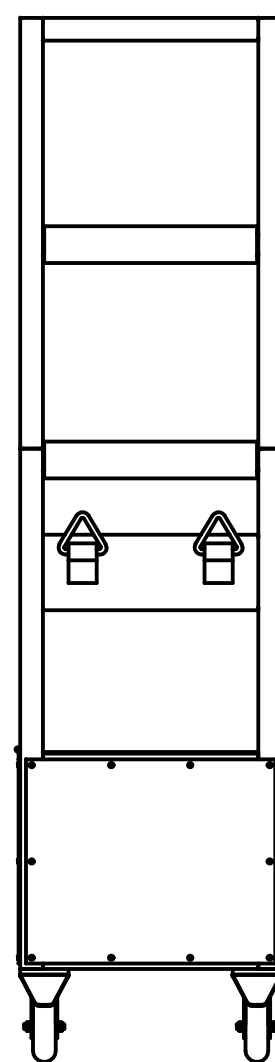
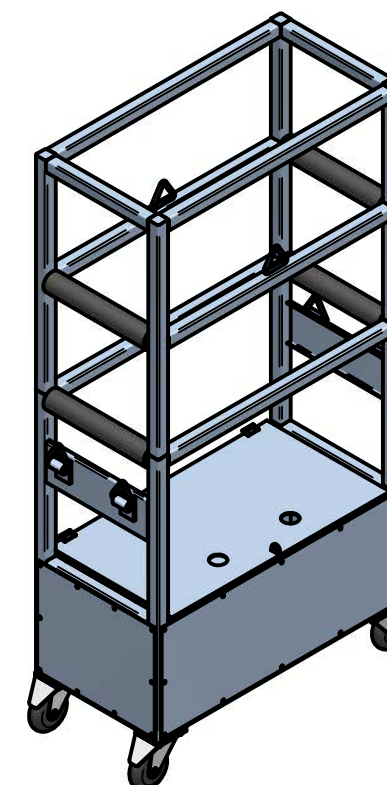
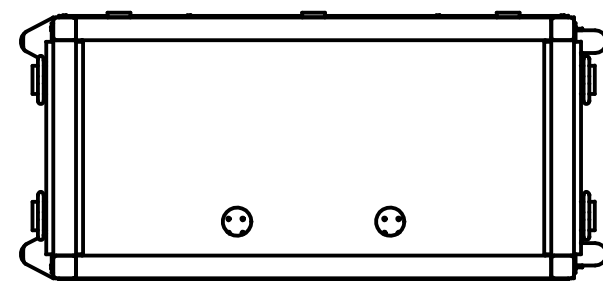


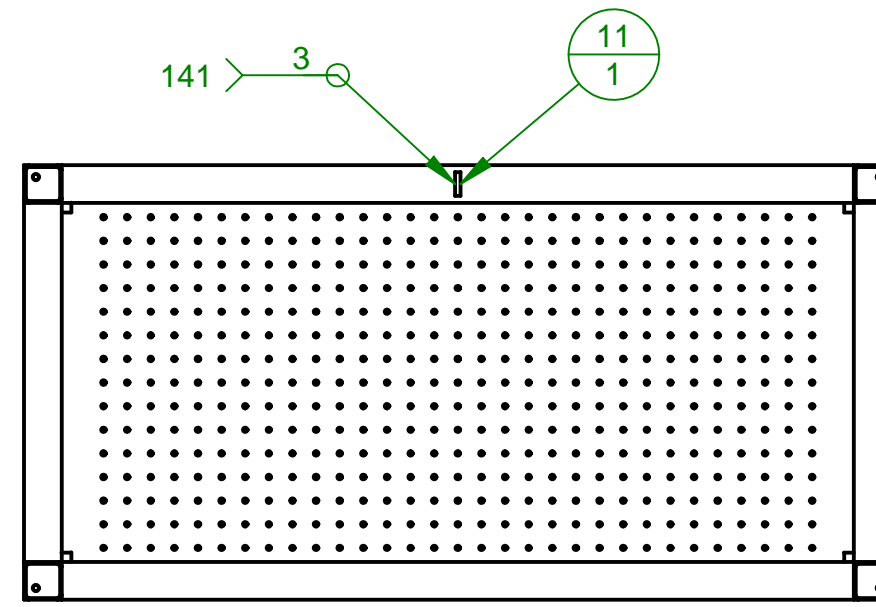
Item Number	Document Number	Title	Material	Quantity
1	1674-01-G01-100	LOWER FRAME ASSEMBLY		1
2	1674-01-G01-200	UPPER FRAME ASSEMBLY		1
3	BIL 125 /37-50	SWIVEL & BRAKE CASTOR ASSEMBLY		2
4	BIL 125/37-50	FIXED CASTOR ASSEMBLY		2
5	1674-01-G01-108	SIDE PLATE	CR4 Steel	2
6	1674-01-G01-109	FRONT PLATE	CR4 Steel	2
8	1674-01-G01-110	LID	CR4 Steel	1
9	----	HINGE	Steel	3
10	1674-01-G01-112	PLASTIC PIPE	PLASTIC	4
11	----	4mm DIA MULTIGRIP POP RIVET	Aluminum	44



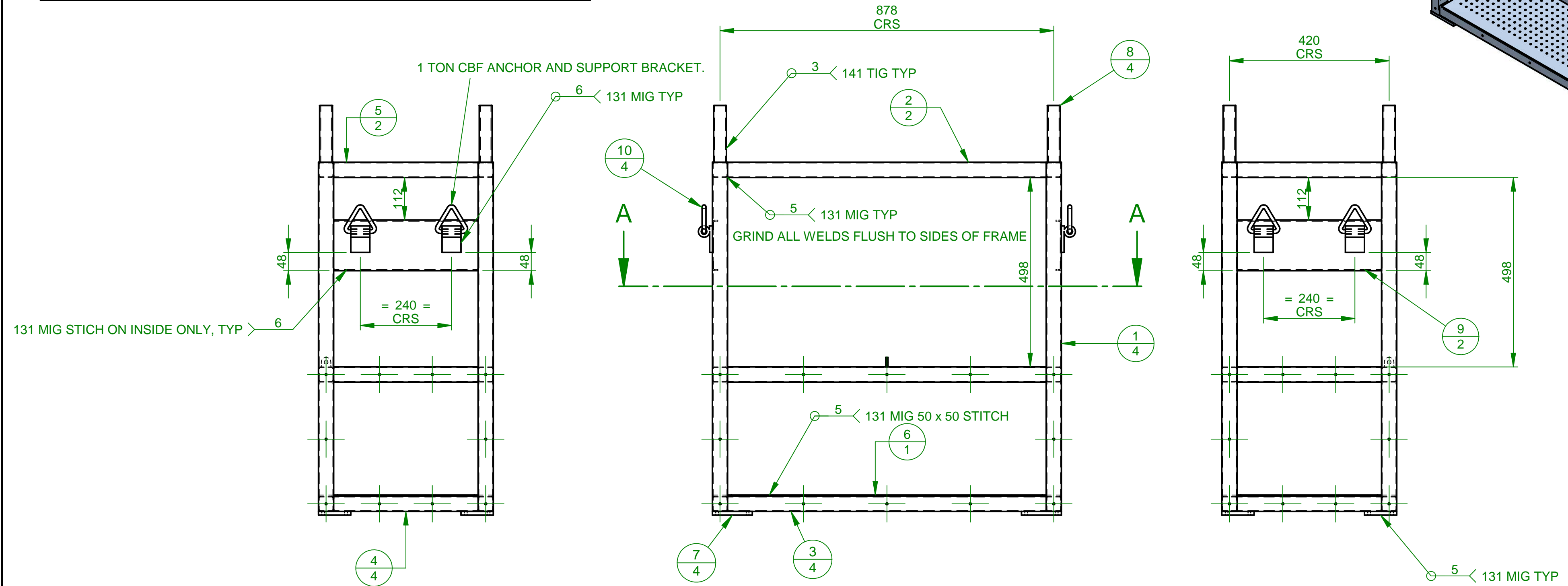
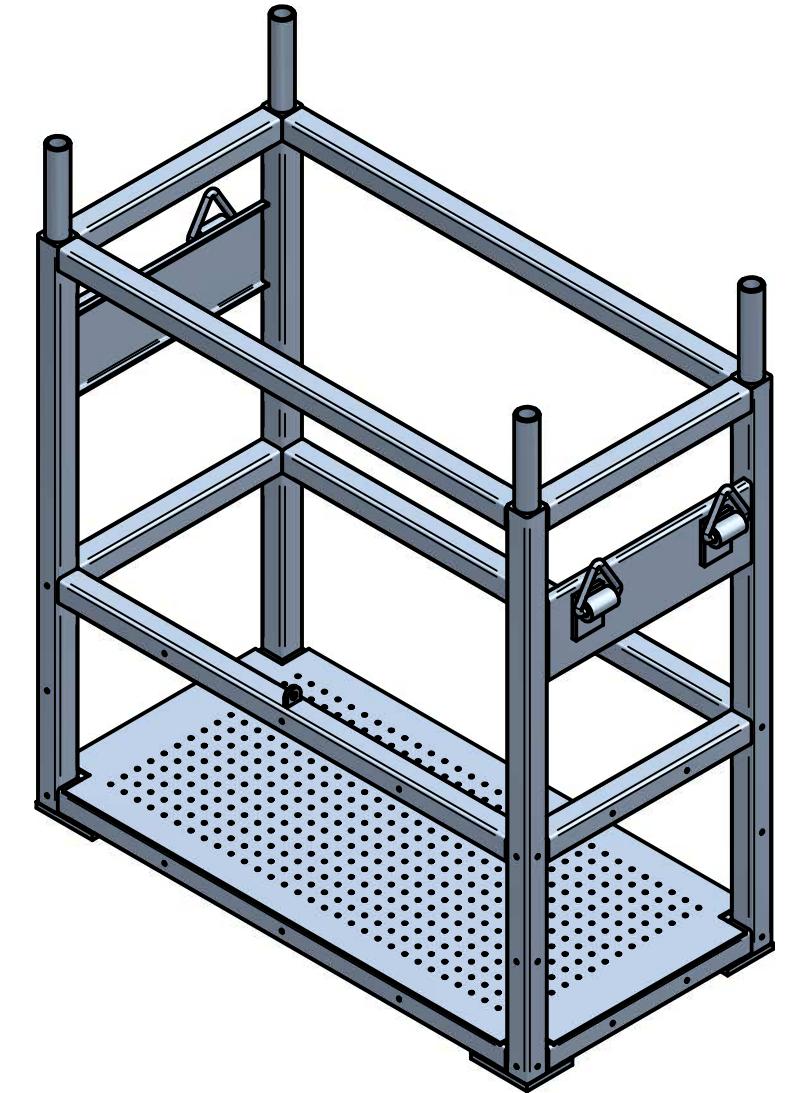
“These are the drawings for the Load Securing Demonstration Trolley (LSDT) that the DSA currently uses in the LGV Driver CPC Practical Safety Demonstration Test (Mod 4). Anyone is able to make use of the drawings to manufacture or have manufactured their own LSDT without charge, subject to the following disclaimer. The DSA makes no warranty or representation, either express or implied, as to the fitness of the drawing for a particular purpose, nor does it accept any liability for any loss or damage, however arising, from use of the drawings. The drawings are provided as they are and any user makes use of them at their own risk. The DSA reserves the right to update the drawings at any time without notice.”

<p>©2009 Crown Copyright DSA All rights reserved</p> <p>Drawing based on BS8888 Dimensions in Millimeters Remove all burrs and sharp edges</p>	<p>Third Angle Projection</p>	<p>Tolerances Unless otherwise specified</p> <p>2 Dec Places ± 0.1mm 1 Dec Place ± 0.5mm 0 - 1000 ± 1 mm 1000 - 4000 ± 2 mm 4000 ± 3 mm</p>	<p>Orig. Scale A2</p> <p>Drawn mmorgan</p> <p>Checked</p> <p>Approved</p>	<p>Material</p> <p>Finish POWDER COAT</p>	<p>2</p> <p>20/07/09</p>	<p>TITLE LSDT FRAME ASSEMBLY</p> <p>PROJECT LSDT FRAME ANNEX B</p>	<p>DWG NO 1674-01-G01</p> <p>SHEET 1 OF 1</p>
					<p>1</p> <p>23/03/09</p>		

Item Number	Document Number	Title	Material	Quantity
1	1674-01-G01-101	VERTICAL TUBE	Steel	4
2	1674-01-G01-102	LONG HORIZONTAL TUBE	Steel	2
3	1674-01-G01-114	LONG HORIZONTAL TUBE WITH RIVET HOLES	Steel	4
4	1674-01-G01-113	SHORT HORIZONTAL TUBE WITH RIVET HOLES	Steel	4
5	1674-01-G01-103	SHORT HORIZONTAL TUBE	Steel	2
6	1674-01-G01-107	FLOOR PLATE	CR4 Steel	1
7	1674-01-G01-105	CASTOR MOUNTING PLATE	Steel	4
8	1674-01-G01-104	SPIGOT TUBE	Steel	4
9	1674-01-G01-106	ANCHOR MOUNTING PLATE	CR4 Steel	2
10	----	1 TON CBF ANCHOR BRACKET ASSEMBLY		4
11	1674-01-G01-111	LID CATCH	Steel	1



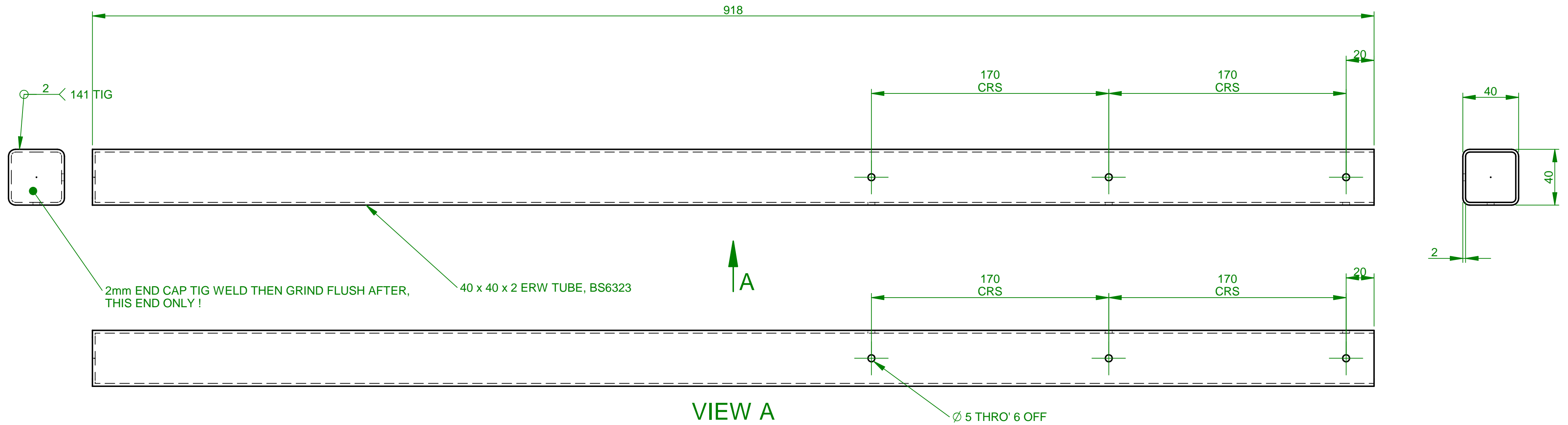
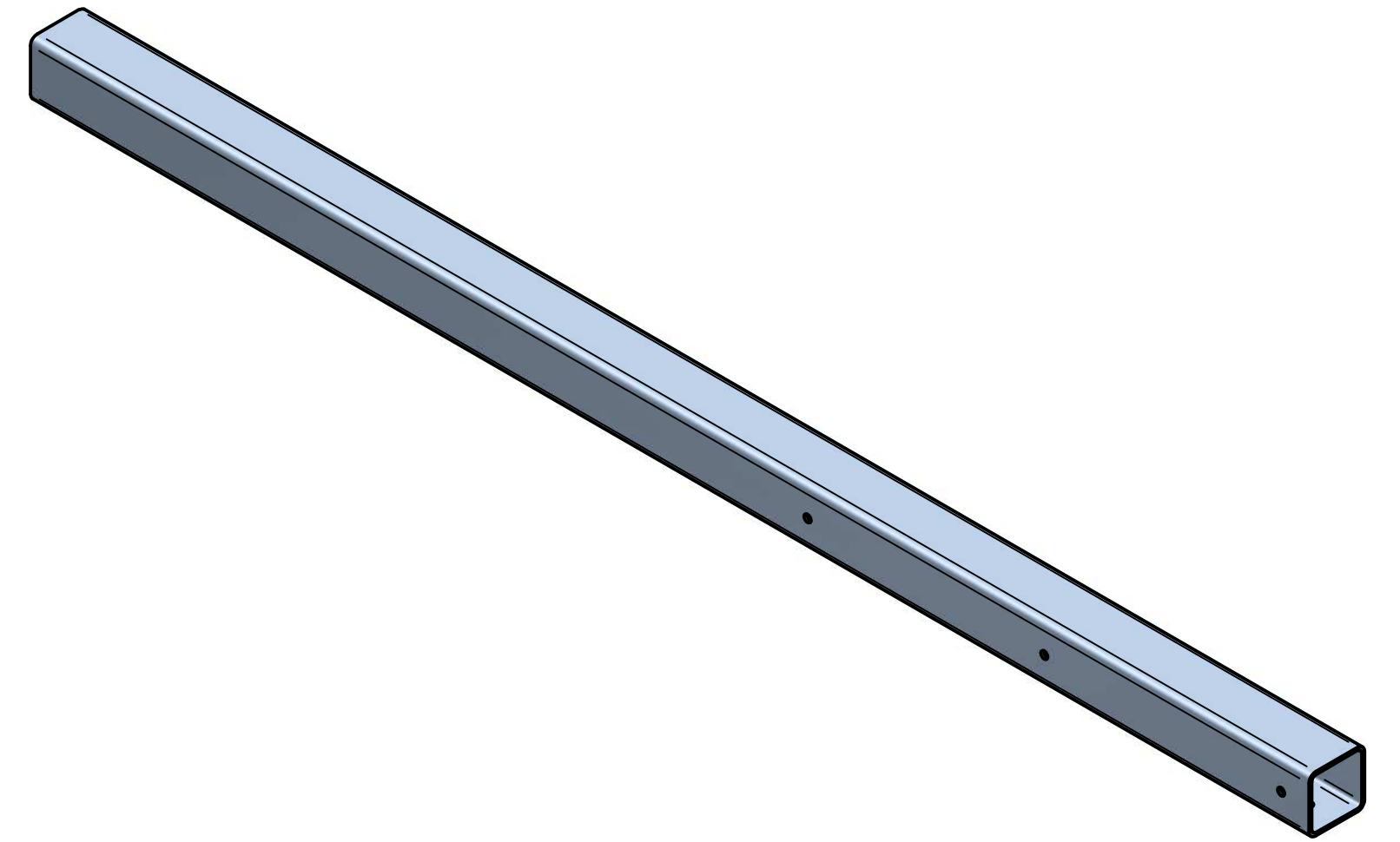
SECTION A-A



POWDER COAT SEMI-GLOSS "BLACK"

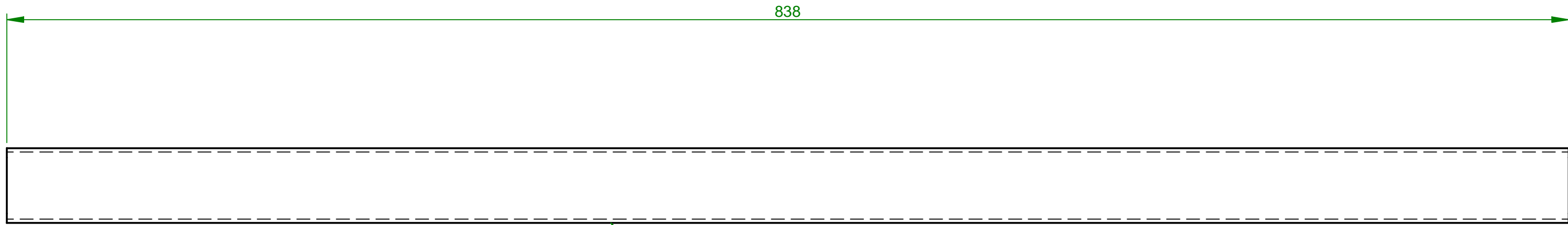
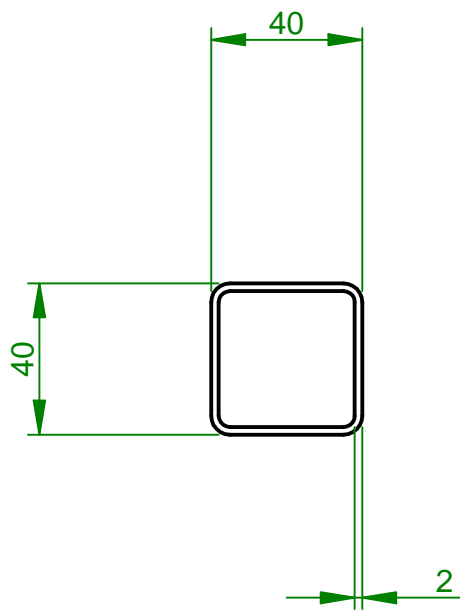
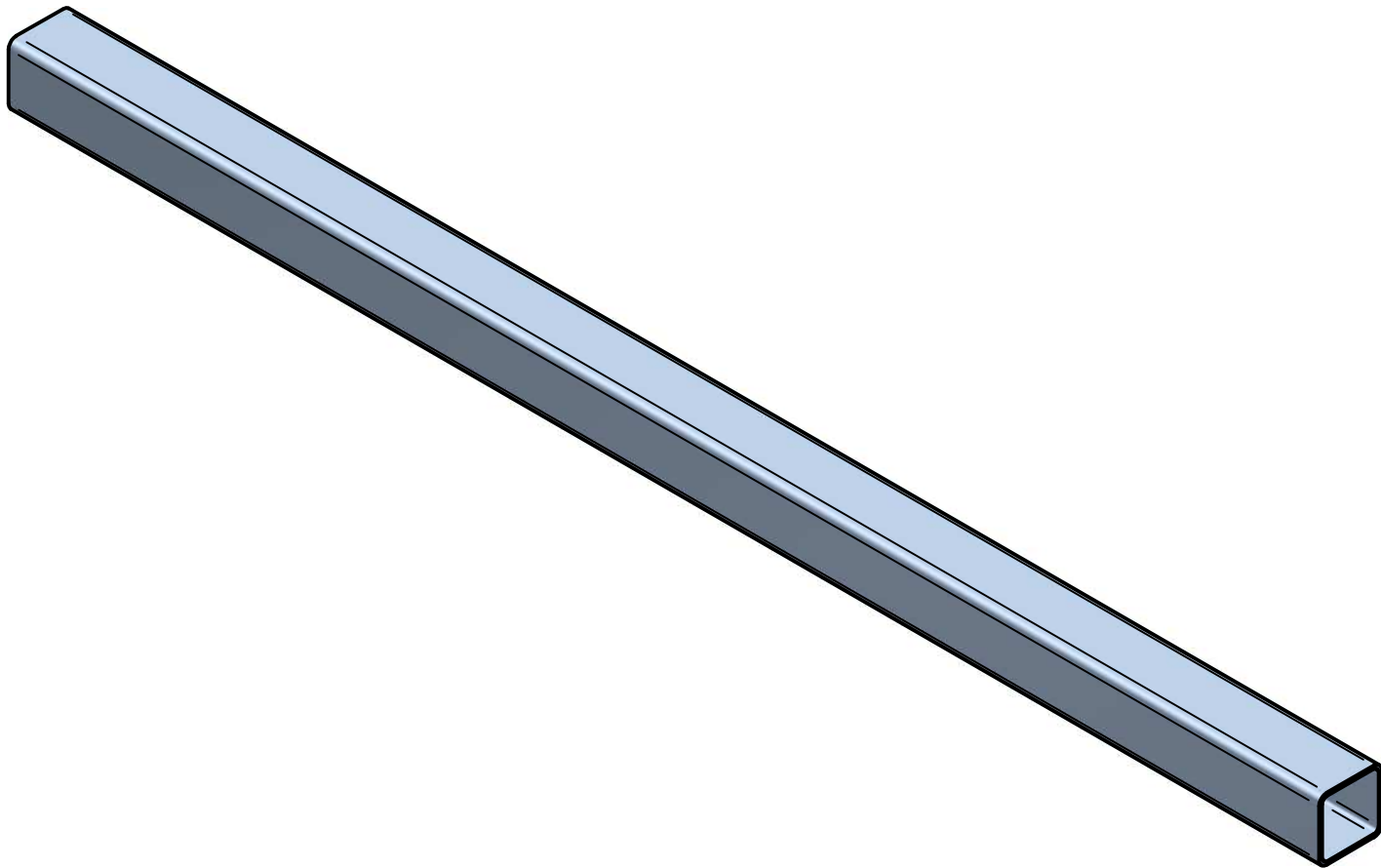
"These are the drawings for the Load Securing Demonstration Trolley (LSDT) that the DSA currently uses in the LGV Driver CPC Practical Safety Demonstration Test (Mod 4). Anyone is able to make use of the drawings to manufacture or have manufactured their own LSDT without charge, subject to the following disclaimer. The DSA makes no warranty or representation, either express or implied, as to the fitness of the drawing for a particular purpose, nor does it accept any liability for any loss or damage, however arising, from use of the drawings. The drawings are provided as they are and any user makes use of them at their own risk. The DSA reserves the right to update the drawings at any time without notice."

<p>©2009 Crown Copyright DSA All rights reserved</p> <p>Drawing based on BS8888 Dimensions in Millimeters Remove all burrs and sharp edges</p>	<p>Third Angle Projection</p>	<p>Tolerances Unless otherwise specified</p> <p>2 Dec Places ± 0.1mm 1 Dec Place ± 0.5mm 0 - 1000 ± 1mm 1000 - 4000 ± 2mm Over 4000 ± 3mm</p>	<p>Orig. Scale A2</p> <p>Drawn mmorgan Checked I wall Approved m riddell</p>	<p>Material</p> <p>Finish</p> <p>POWDER COATED</p>	<p>4 13/08/09</p>	<p>TITLE</p> <p>LOWER FRAME ASSEMBLY</p>	<p>DWG NO</p> <p>1674-01-G01-100</p>
					<p>2 29/04/09</p>		



“These are the drawings for the Load Securing Demonstration Trolley (LSDT) that the DSA currently uses in the LGV Driver CPC Practical Safety Demonstration Test (Mod 4). Anyone is able to make use of the drawings to manufacture or have manufactured their own LSDT without charge, subject to the following disclaimer. The DSA makes no warranty or representation, either express or implied, as to the fitness of the drawing for a particular purpose, nor does it accept any liability for any loss or damage, however arising, from use of the drawings. The drawings are provided as they are and any user makes use of them at their own risk. The DSA reserves the right to update the drawings at any time without notice.”

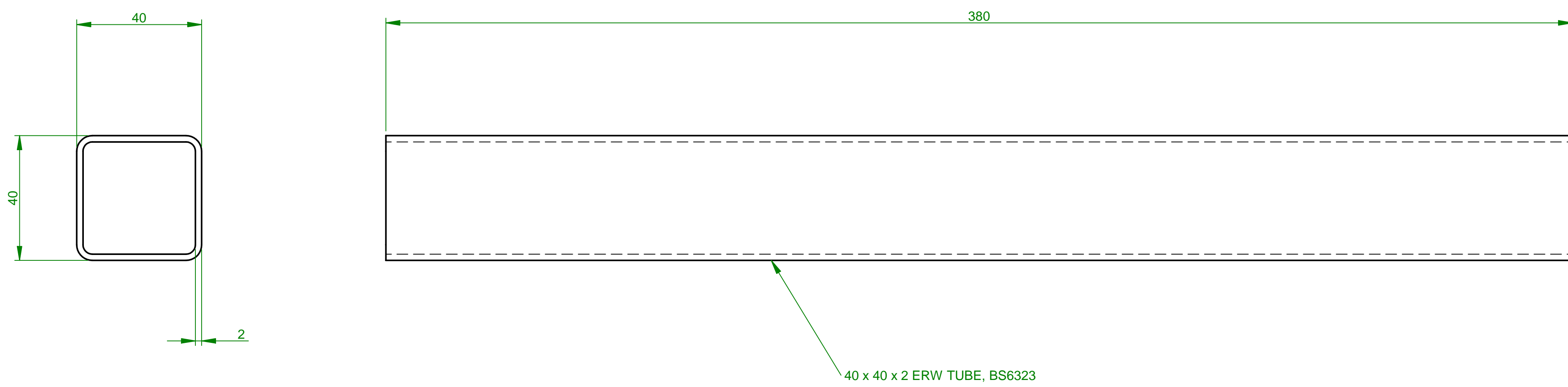
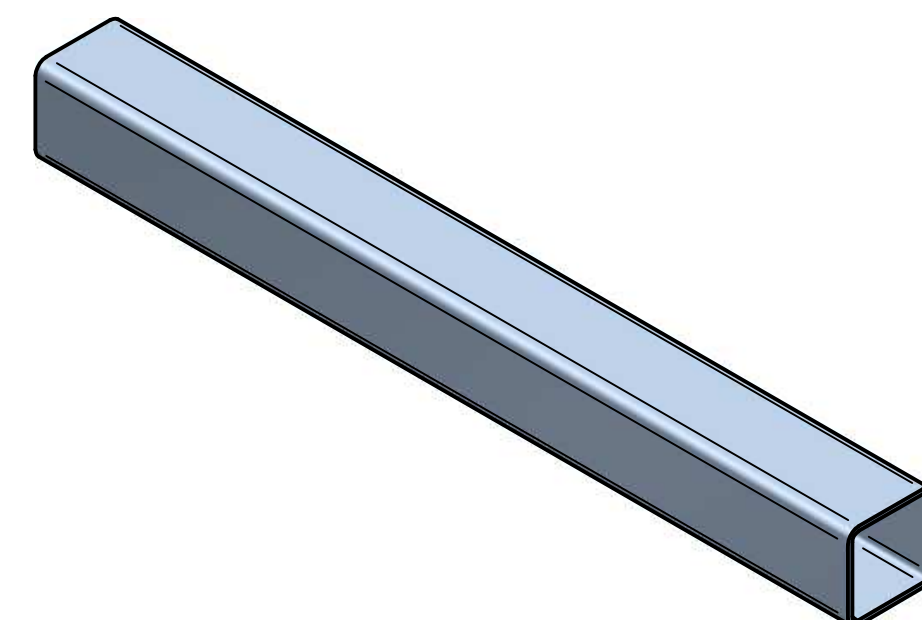
<p>©2009 Crown Copyright DSA All rights reserved</p> <p>Drawing based on BS8888 Dimensions in Millimeters Remove all burrs and sharp edges</p>	<p>Third Angle Projection</p>	<p>Tolerances Unless otherwise specified</p> <p>2 Dec Places ± 0.1 mm 1 Dec Place ± 0.5 mm 0 - 1000 ± 1 mm 1000 - 4000 ± 2 mm Over 4000 ± 3 mm</p>	<p>Orig. Scale A2</p> <p>Drawn mmorgan</p> <p>Checked I wall</p> <p>Approved m riddell</p>	<p>Material</p> <p>Steel</p> <p>Finish</p> <p>NATURAL</p>	<p>Issue</p> <p>2</p>	<p>Date</p> <p>20/07/09</p>	<p>Mod No</p>	<p>TITLE</p> <p>VERTICAL TUBE</p>	<p>PROJECT</p> <p>LSDT VERTICAL FRAME ANNEX B</p>	<p>DWG NO</p> <p>1674-01-G01-101</p>



40 x 40 x 2 ERW TUBE, BS6323

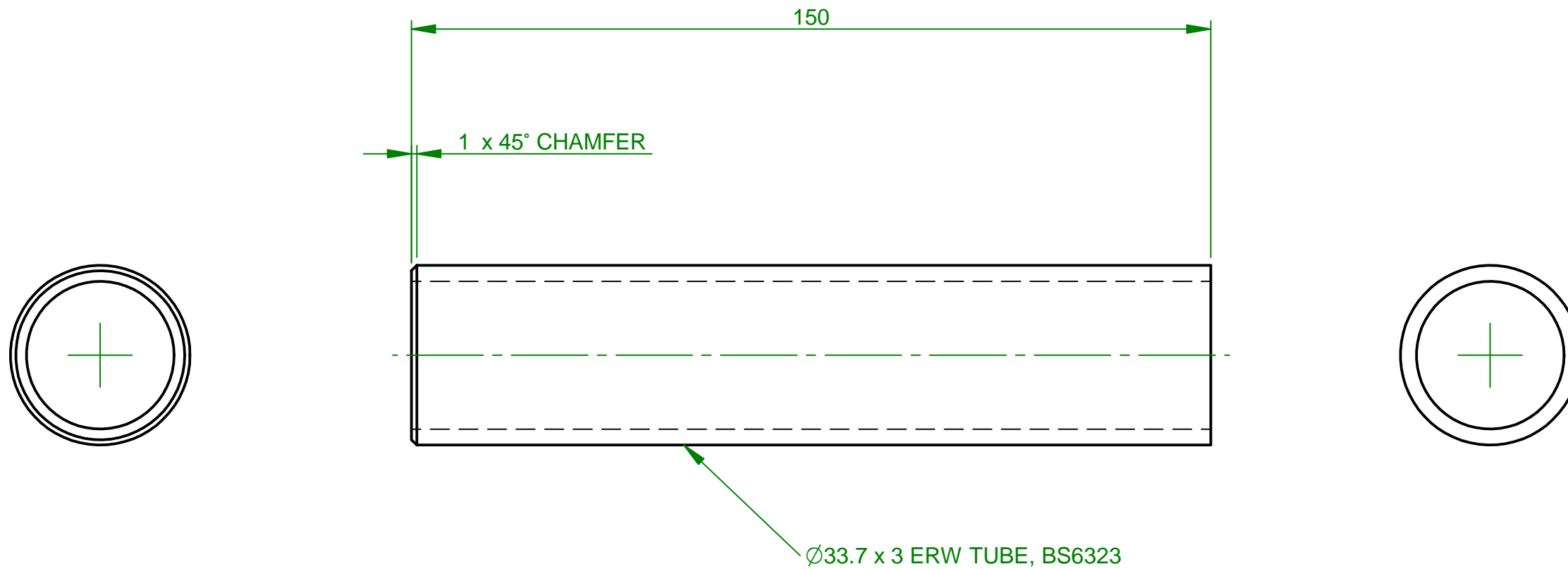
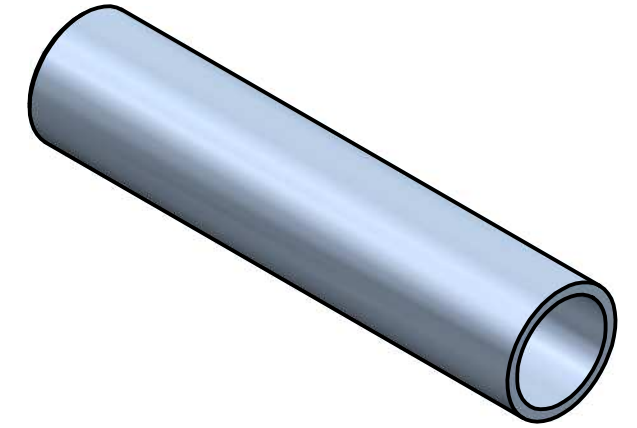
“These are the drawings for the Load Securing Demonstration Trolley (LSDT) that the DSA currently uses in the LGV Driver CPC Practical Safety Demonstration Test (Mod 4). Anyone is able to make use of the drawings to manufacture or have manufactured their own LSDT without charge, subject to the following disclaimer. The DSA makes no warranty or representation, either express or implied, as to the fitness of the drawing for a particular purpose, nor does it accept any liability for any loss or damage, however arising, from use of the drawings. The drawings are provided as they are and any user makes use of them at their own risk. The DSA reserves the right to update the drawings at any time without notice.”

<p>©2009 Crown Copyright DSA All rights reserved</p> <p>Drawing based on BS8888 Dimensions in Millimeters Remove all burrs and sharp edges</p>	<p>Third Angle Projection</p>	<p>Tolerances Unless otherwise specified</p> <p>2 Dec Places ± 0.1mm 1 Dec Place ± 0.5mm 0 - 1000 ± 1 mm 1000 - 4000 ± 2 mm Over 4000 ± 3 mm</p>	<p>Orig. Scale A2</p> <p>Drawn mmorgan</p> <p>Checked l wall</p> <p>Approved m riddell</p>	<p>Material</p> <p>Steel</p> <p>Finish</p> <p>NATURAL</p>	<p>2</p> <p>20/07/09</p>	<p>TITLE</p> <p>LONG HORIZONTAL TUBE</p> <p>PROJECT</p> <p>LSDT LOWER FRAME ANNEX B</p>	<p>DWG NO</p> <p>1674-01-G01-102</p>	
					<p>1</p> <p>20/03/09</p>		<p>Issue</p> <p>Date</p> <p>Mod No</p>	<p>SHEET 1 OF 1</p>



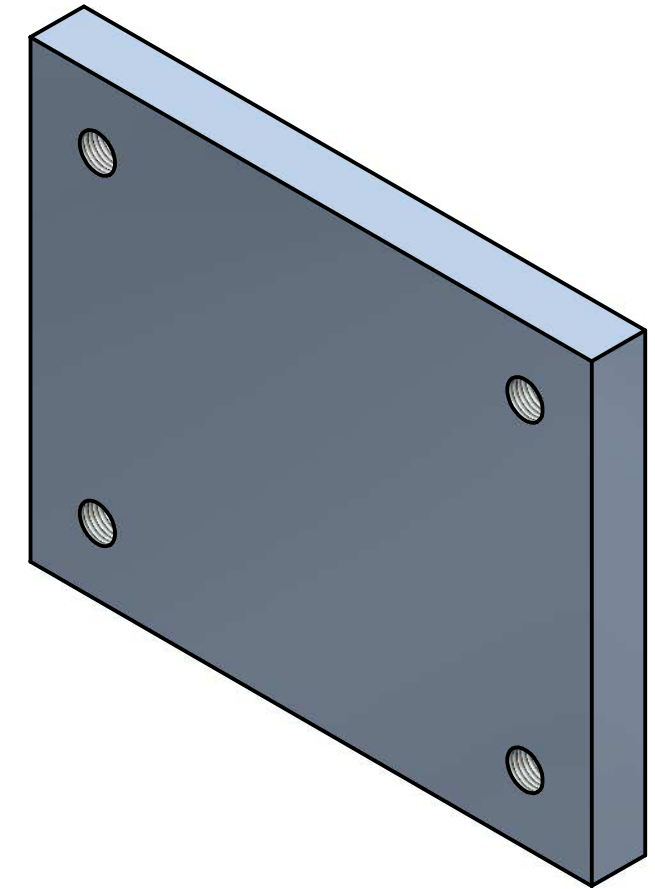
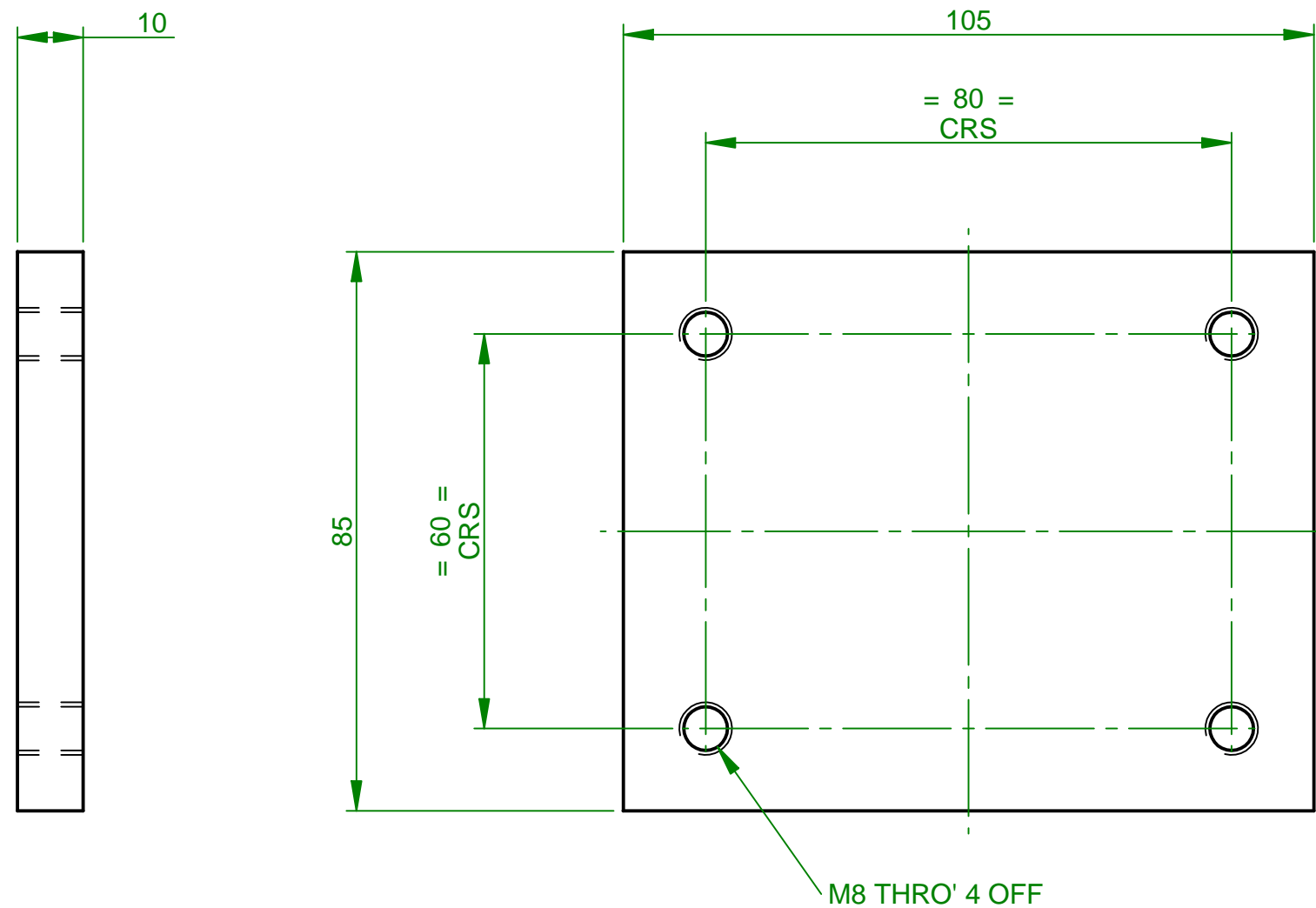
“These are the drawings for the Load Securing Demonstration Trolley (LSDT) that the DSA currently uses in the LGV Driver CPC Practical Safety Demonstration Test (Mod 4). Anyone is able to make use of the drawings to manufacture or have manufactured their own LSDT without charge, subject to the following disclaimer. The DSA makes no warranty or representation, either express or implied, as to the fitness of the drawing for a particular purpose, nor does it accept any liability for any loss or damage, however arising, from use of the drawings. The drawings are provided as they are and any user makes use of them at their own risk. The DSA reserves the right to update the drawings at any time without notice.”

<p>©2009 Crown Copyright DSA All rights reserved</p> <p>Drawing based on BS8888 Dimensions in Millimeters Remove all burrs and sharp edges</p>	<p>Third Angle Projection</p>	<p>Tolerances Unless otherwise specified</p> <p>2 Dec Places ± 0.1mm 1 Dec Place ± 0.5mm 0 - 1000 ± 1 mm 1000 - 4000 ± 2 mm Over 4000 ± 3 mm</p>	<p>Orig. Scale A2</p> <p>Drawn mmorgan</p> <p>Checked l wall</p> <p>Approved m riddell</p>	<p>Material</p> <p>Steel</p> <p>Finish</p> <p>NATURAL</p>	<p>Issue</p> <p>2</p>	<p>Date</p> <p>20/07/09</p>	<p>Mod No</p>	<p>TITLE</p> <p>SHORT HORIZONTAL TUBE</p>	<p>PROJECT</p> <p>LSDT LOWER FRAME ANNEX B</p>	<p>DWG NO</p> <p>1674-01-G01-103</p>	<p>SHEET 1 OF 1</p>



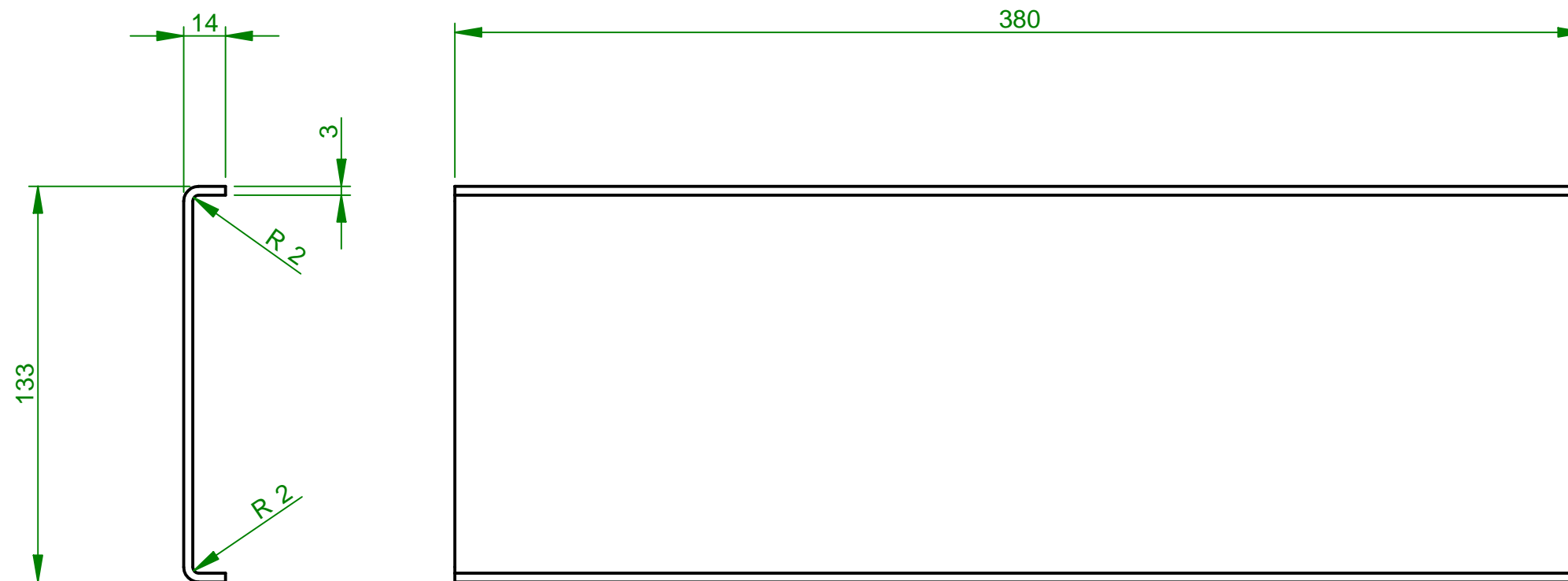
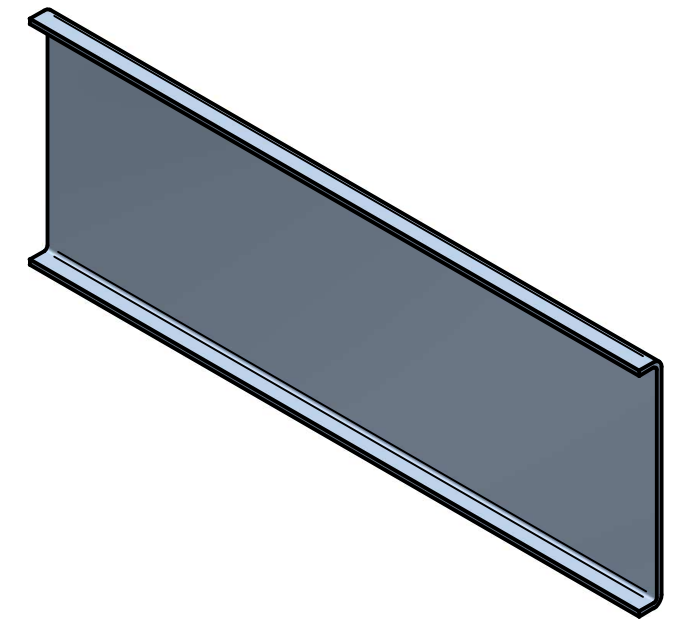
“These are the drawings for the Load Securing Demonstration Trolley (LSDT) that the DSA currently uses in the LGV Driver CPC Practical Safety Demonstration Test (Mod 4). Anyone is able to make use of the drawings to manufacture or have manufactured their own LSDT without charge, subject to the following disclaimer. The DSA makes no warranty or representation, either express or implied, as to the fitness of the drawing for a particular purpose, nor does it accept any liability for any loss or damage, however arising, from use of the drawings. The drawings are provided as they are and any user makes use of them at their own risk. The DSA reserves the right to update the drawings at any time without notice.”

	© 2009 Crown Copyright DSA All rights reserved Drawing based on BS8888 Dimensions in Millimeters Remove all burrs and sharp edges	Third Angle Projection 	Tolerances Unless otherwise specified 2 Dec Places ± 0.1mm 1 Dec Place ± 0.5mm 0 - 1000 ± 1 mm 1000 - 4000 ± 2 mm Over 4000 ± 3 mm	Orig. Scale A3	Material Steel	Issue 2 Date 20/07/09	TITLE SPIGOT TUBE	DWG NO 1674-01-G01-104
				Drawn mmorgan Checked l wall Approved m riddell	Finish NATURAL	Issue 1 Date 20/03/09	PROJECT LSDT LOWER FRAME ANNEX B	SHEET 1 OF 1



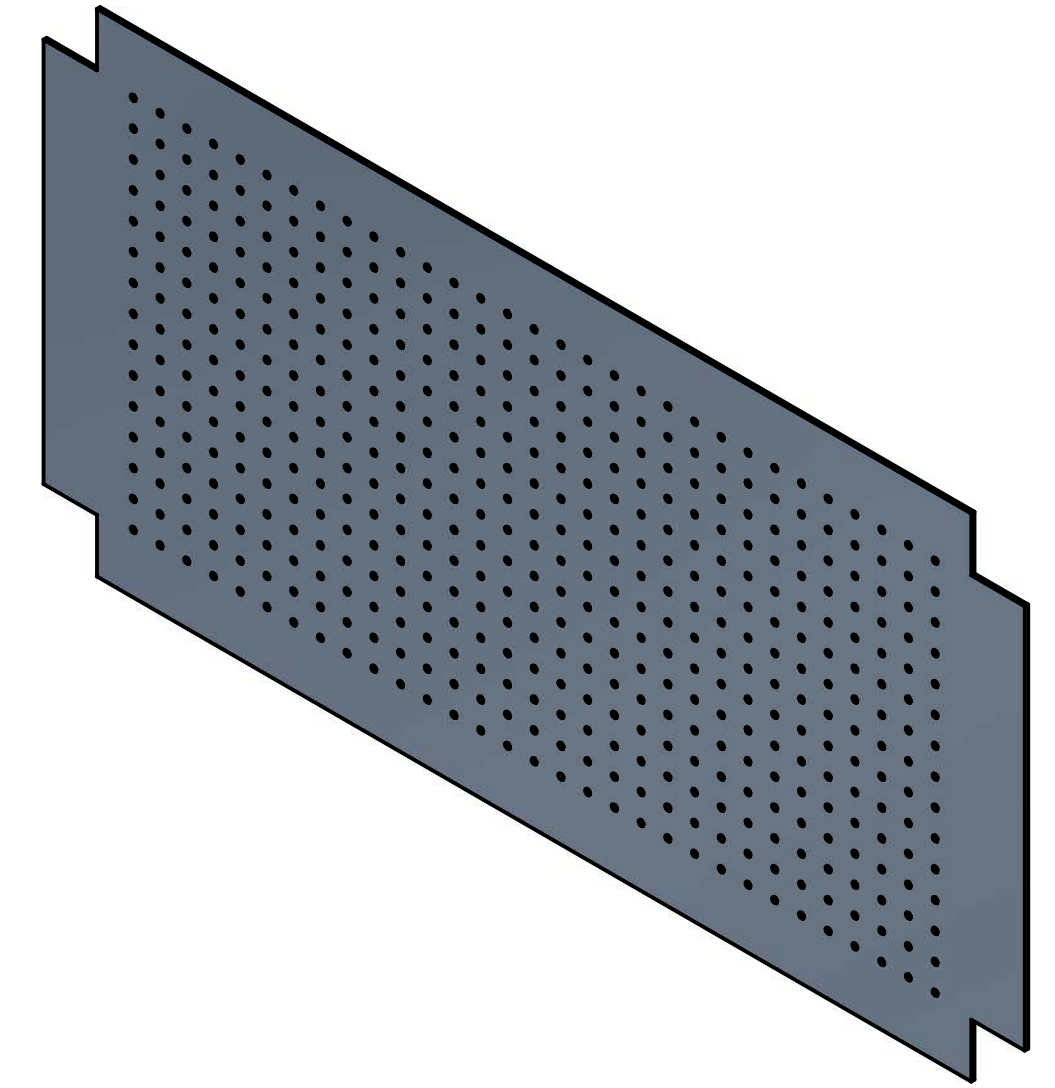
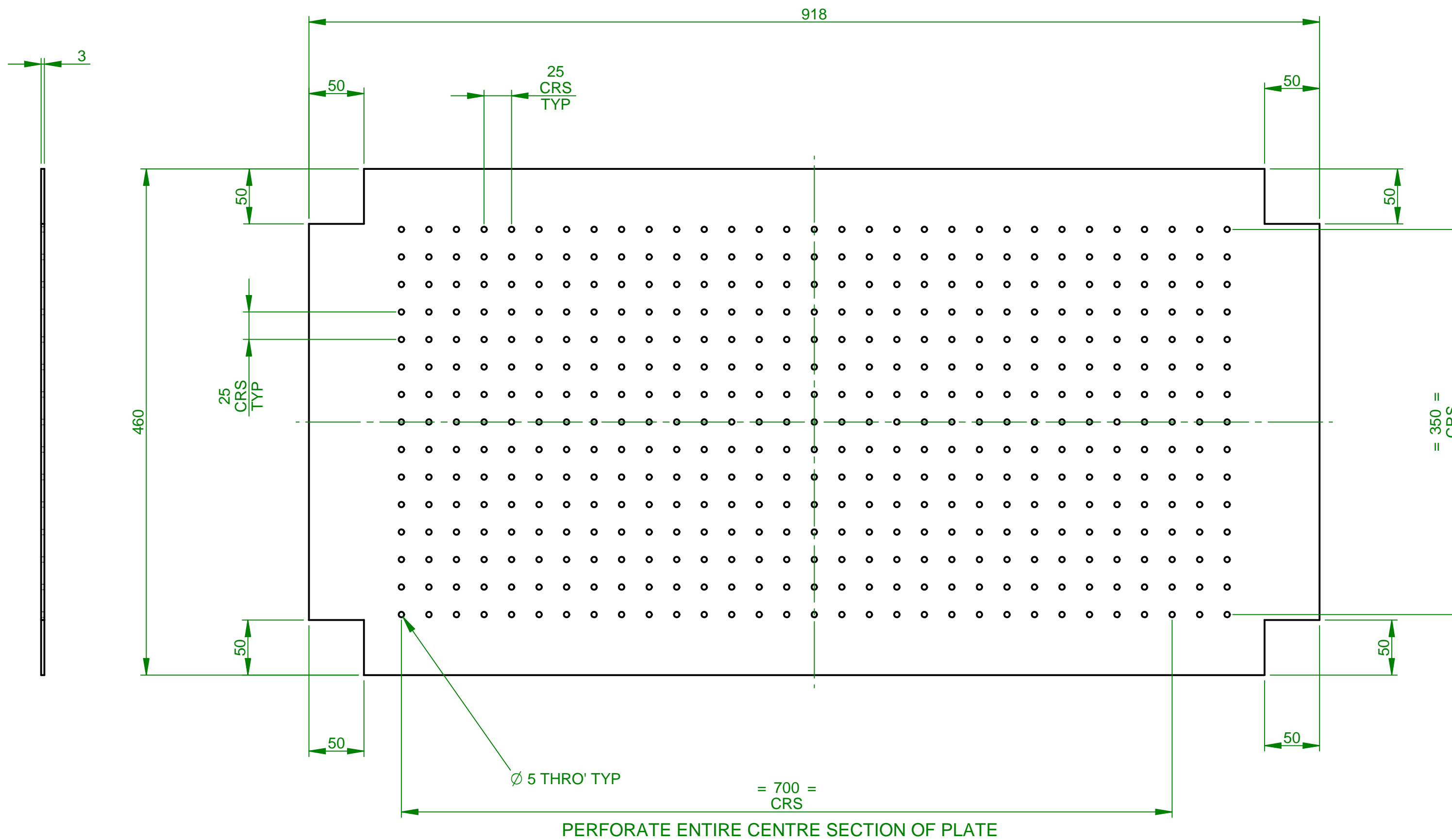
“These are the drawings for the Load Securing Demonstration Trolley (LSDT) that the DSA currently uses in the LGV Driver CPC Practical Safety Demonstration Test (Mod 4). Anyone is able to make use of the drawings to manufacture or have manufactured their own LSDT without charge, subject to the following disclaimer. The DSA makes no warranty or representation, either express or implied, as to the fitness of the drawing for a particular purpose, nor does it accept any liability for any loss or damage, however arising, from use of the drawings. The drawings are provided as they are and any user makes use of them at their own risk. The DSA reserves the right to update the drawings at any time without notice.”

	© 2009 Crown Copyright DSA All rights reserved Drawing based on BS8888 Dimensions in Millimeters Remove all burrs and sharp edges	Third Angle Projection 	Tolerances Unless otherwise specified 2 Dec Places ± 0.1mm 1 Dec Place ± 0.5mm 0 - 1000 ± 1mm 1000 - 4000 ± 2mm Over 4000 ± 3mm	Orig. Scale A3	Material Steel	3 12/08/09	TITLE CASTOR MOUNTING PLATE	DWG NO 1674-01-G01-105	
				Drawn mmorgan	Finish NATURAL	2 20/07/09			PROJECT LSDT LOWER FRAME ANNEX B
				Checked J wall	Issue Date Mod No 1 12/08/09	SHEET 1 OF 1			
Approved m riddell									



“These are the drawings for the Load Securing Demonstration Trolley (LSDT) that the DSA currently uses in the LGV Driver CPC Practical Safety Demonstration Test (Mod 4). Anyone is able to make use of the drawings to manufacture or have manufactured their own LSDT without charge, subject to the following disclaimer. The DSA makes no warranty or representation, either express or implied, as to the fitness of the drawing for a particular purpose, nor does it accept any liability for any loss or damage, however arising, from use of the drawings. The drawings are provided as they are and any user makes use of them at their own risk. The DSA reserves the right to update the drawings at any time without notice.”

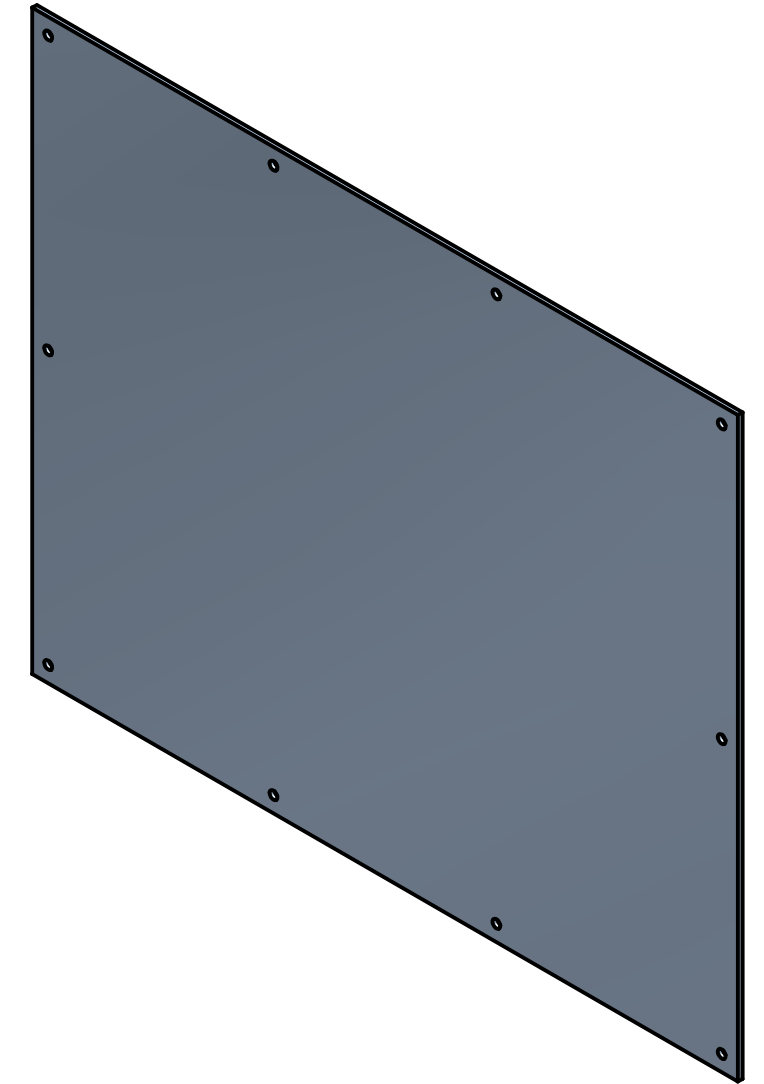
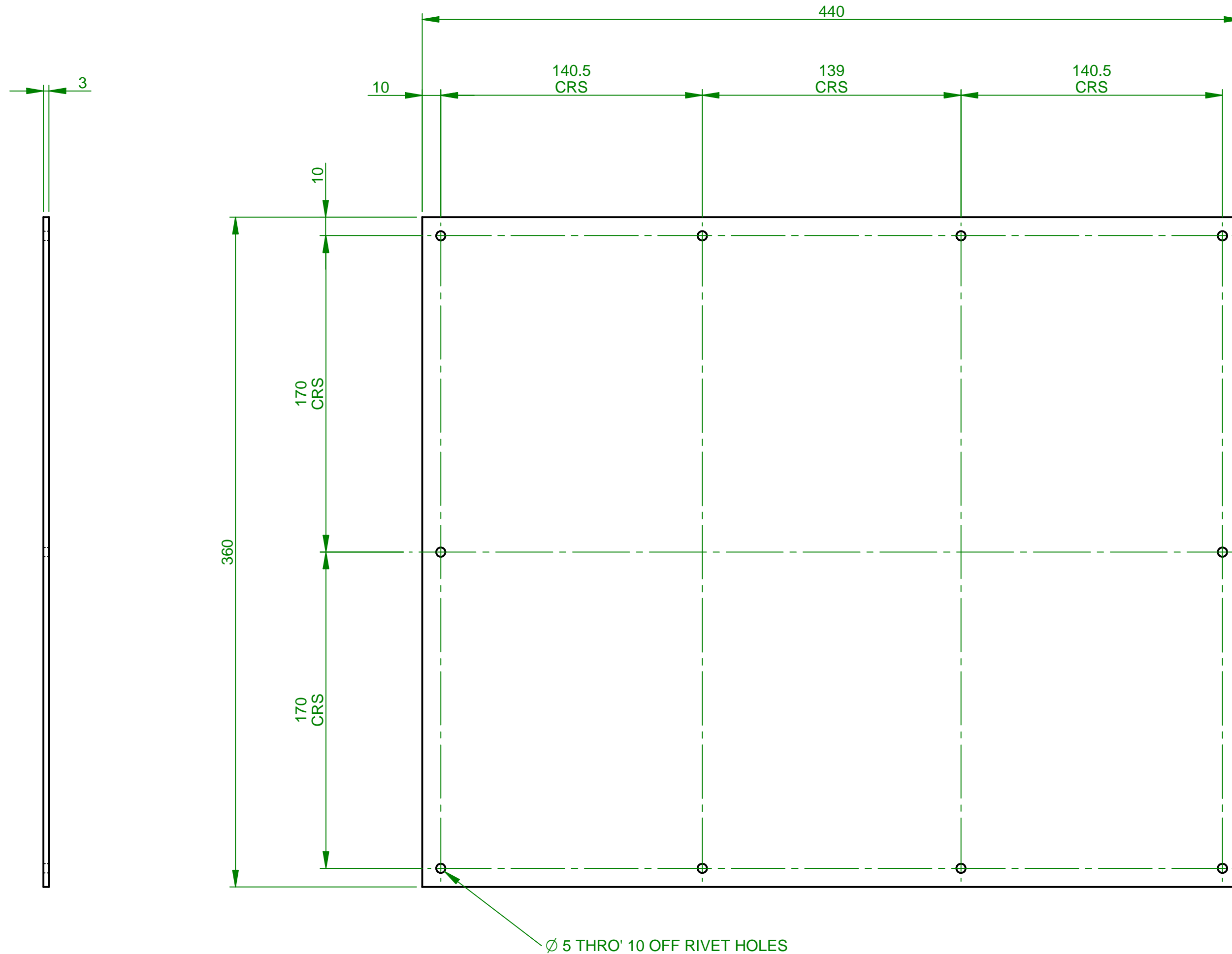
	© 2009 Crown Copyright DSA All rights reserved Drawing based on BS8888 Dimensions in Millimeters Remove all burrs and sharp edges	Third Angle Projection 	Tolerances Unless otherwise specified 2 Dec Places ± 0.1mm 1 Dec Place ± 0.5mm 0 - 1000 ± 1 mm 1000 - 4000 ± 2 mm Over 4000 ± 3 mm	Orig. Scale A3	Material CR4 Steel	Issue 2 Date 20/07/09	TITLE ANCHOR MOUNTING PLATE	DWG NO 1674-01-G01-106
				Drawn mmorgan Checked l wall Approved m riddell	Finish NATURAL	Issue 1 Date 23/03/09	PROJECT LSDT LOWER FRAME ANNEX B	SHEET 1 OF 1



“These are the drawings for the Load Securing Demonstration Trolley (LSDT) that the DSA currently uses in the LGV Driver CPC Practical Safety Demonstration Test (Mod 4). Anyone is able to make use of the drawings to manufacture or have manufactured their own LSDT without charge, subject to the following disclaimer. The DSA makes no warranty or representation, either express or implied, as to the fitness of the drawing for a particular purpose, nor does it accept any liability for any loss or damage, however arising, from use of the drawings. The drawings are provided as they are and any user makes use of them at their own risk. The DSA reserves the right to update the drawings at any time without notice.”

<p>©2009 Crown Copyright DSA All rights reserved</p> <p>Drawing based on BS8888 Dimensions in Millimeters Remove all burrs and sharp edges</p>	<p>Third Angle Projection</p>	<p>Tolerances Unless otherwise specified</p> <p>2 Dec Places ± 0.1mm 1 Dec Place ± 0.5mm 0 - 1000 ± 1 mm 1000 - 4000 ± 2 mm Over 4000 ± 3 mm</p>	<p>Orig. Scale A2</p> <p>Drawn mmorgan</p> <p>Checked I wall</p> <p>Approved m riddell</p>	<p>Material</p> <p>CR4 Steel</p> <p>Finish</p> <p>NATURAL</p>	<p>Issue</p> <p>2 20/07/09</p> <p>1 20/03/09</p>	<p>Date</p> <p>Mod No</p>	<p>TITLE</p> <p>FLOOR PLATE</p> <p>PROJECT</p> <p>LSDT LOWER FRAME ANNEX B</p>	<p>DWG NO</p> <p>1674-01-G01-107</p> <p>SHEET 1 OF 1</p>

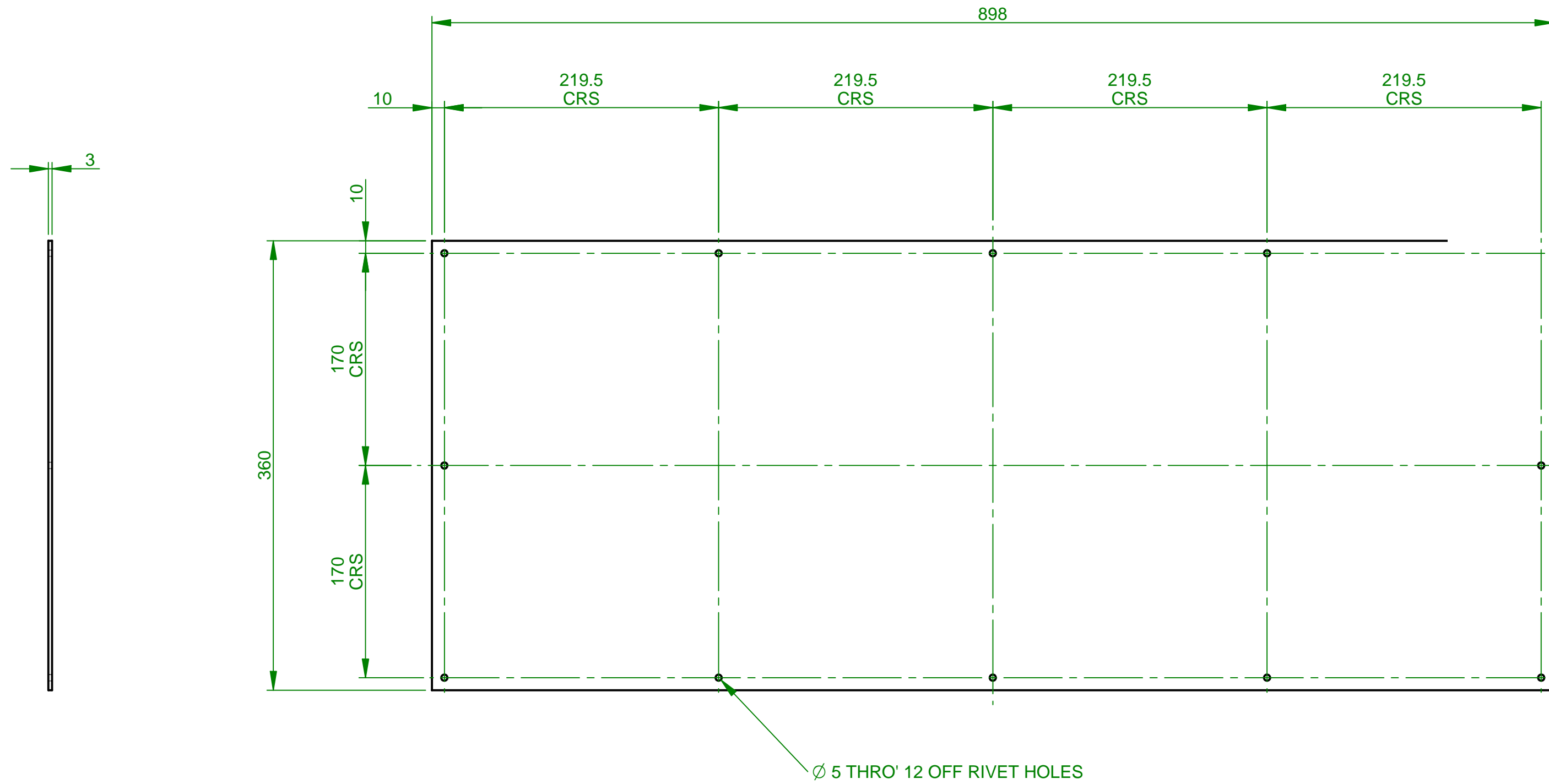
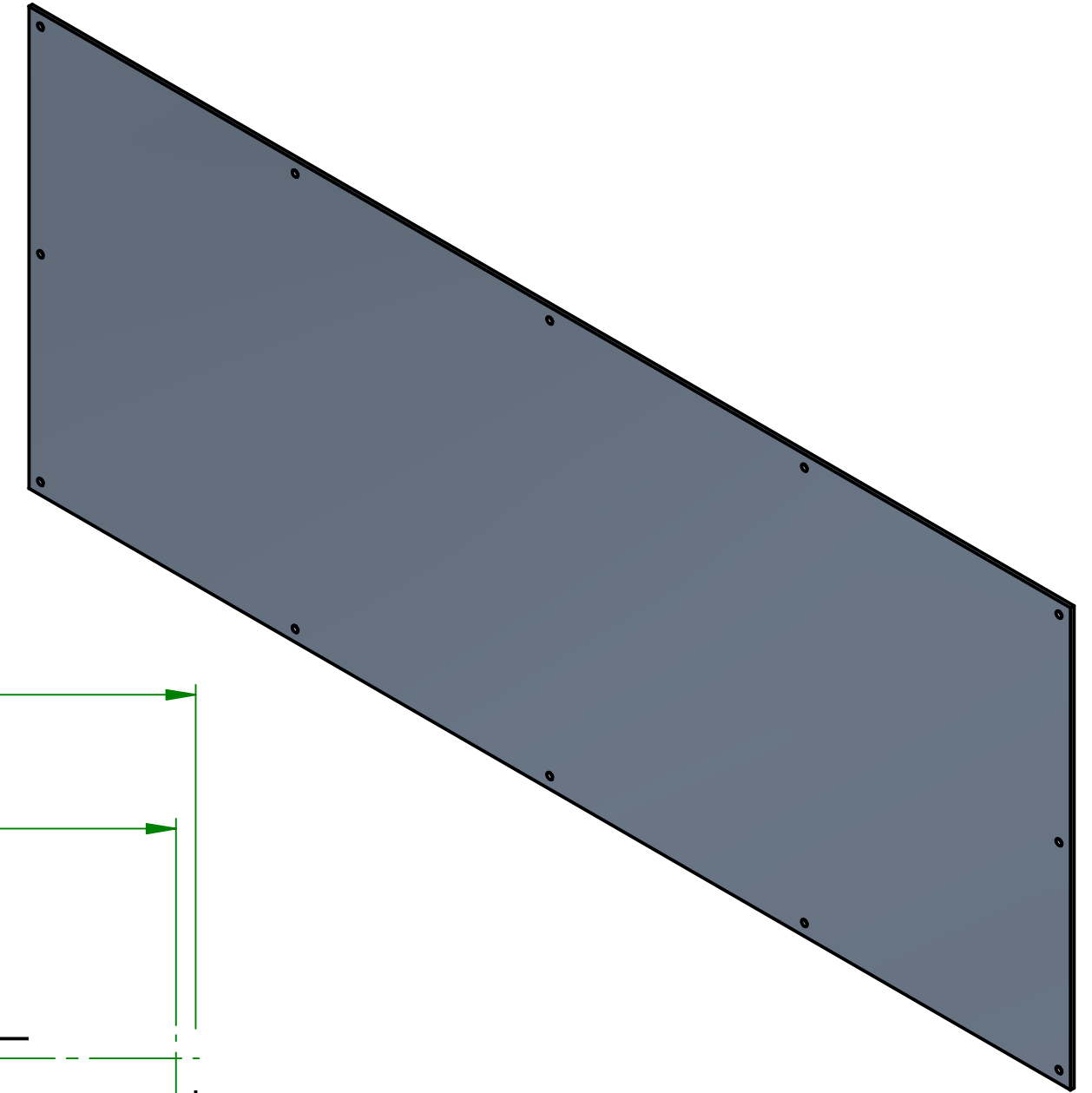
POWDER COAT SEMI-GLOSS "BLACK"



“These are the drawings for the Load Securing Demonstration Trolley (LSDT) that the DSA currently uses in the LGV Driver CPC Practical Safety Demonstration Test (Mod 4). Anyone is able to make use of the drawings to manufacture or have manufactured their own LSDT without charge, subject to the following disclaimer. The DSA makes no warranty or representation, either express or implied, as to the fitness of the drawing for a particular purpose, nor does it accept any liability for any loss or damage, however arising, from use of the drawings. The drawings are provided as they are and any user makes use of them at their own risk. The DSA reserves the right to update the drawings at any time without notice.”

<p>©2009 Crown Copyright DSA All rights reserved</p> <p>Drawing based on BS8888 Dimensions in Millimeters Remove all burrs and sharp edges</p>	<p>Third Angle Projection</p>	<p>Tolerances Unless otherwise specified</p> <p>2 Dec Places ± 0.1mm 1 Dec Place ± 0.5mm 0 - 1000 ± 1 mm 1000 - 4000 ± 2 mm Over 4000 ± 3 mm</p>	<p>Orig. Scale A2</p> <p>Drawn mmorgan</p> <p>Checked l wall</p> <p>Approved m riddell</p>	<p>Material</p> <p>CR4 Steel</p> <p>Finish</p> <p>POWDER COAT</p>	<p>2</p> <p>20/07/09</p>	<p>TITLE</p> <p>SIDE PLATE</p>	<p>DWG NO</p> <p>1674-01-G01-108</p>
					<p>1</p> <p>20/03/09</p>		

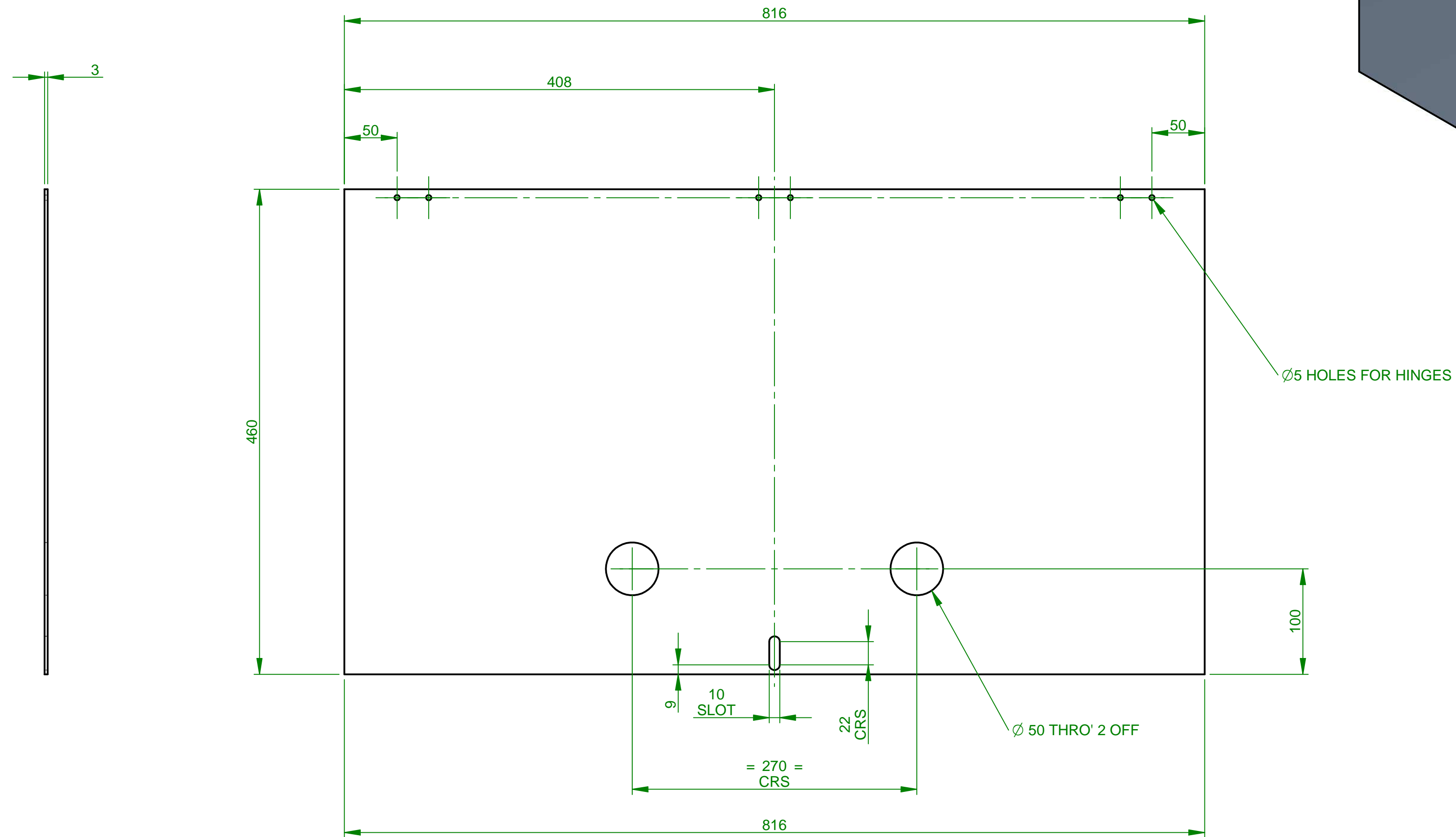
POWDER COAT SEMI-GLOSS "BLACK"



“These are the drawings for the Load Securing Demonstration Trolley (LSDT) that the DSA currently uses in the LGV Driver CPC Practical Safety Demonstration Test (Mod 4). Anyone is able to make use of the drawings to manufacture or have manufactured their own LSDT without charge, subject to the following disclaimer. The DSA makes no warranty or representation, either express or implied, as to the fitness of the drawing for a particular purpose, nor does it accept any liability for any loss or damage, however arising, from use of the drawings. The drawings are provided as they are and any user makes use of them at their own risk. The DSA reserves the right to update the drawings at any time without notice.”

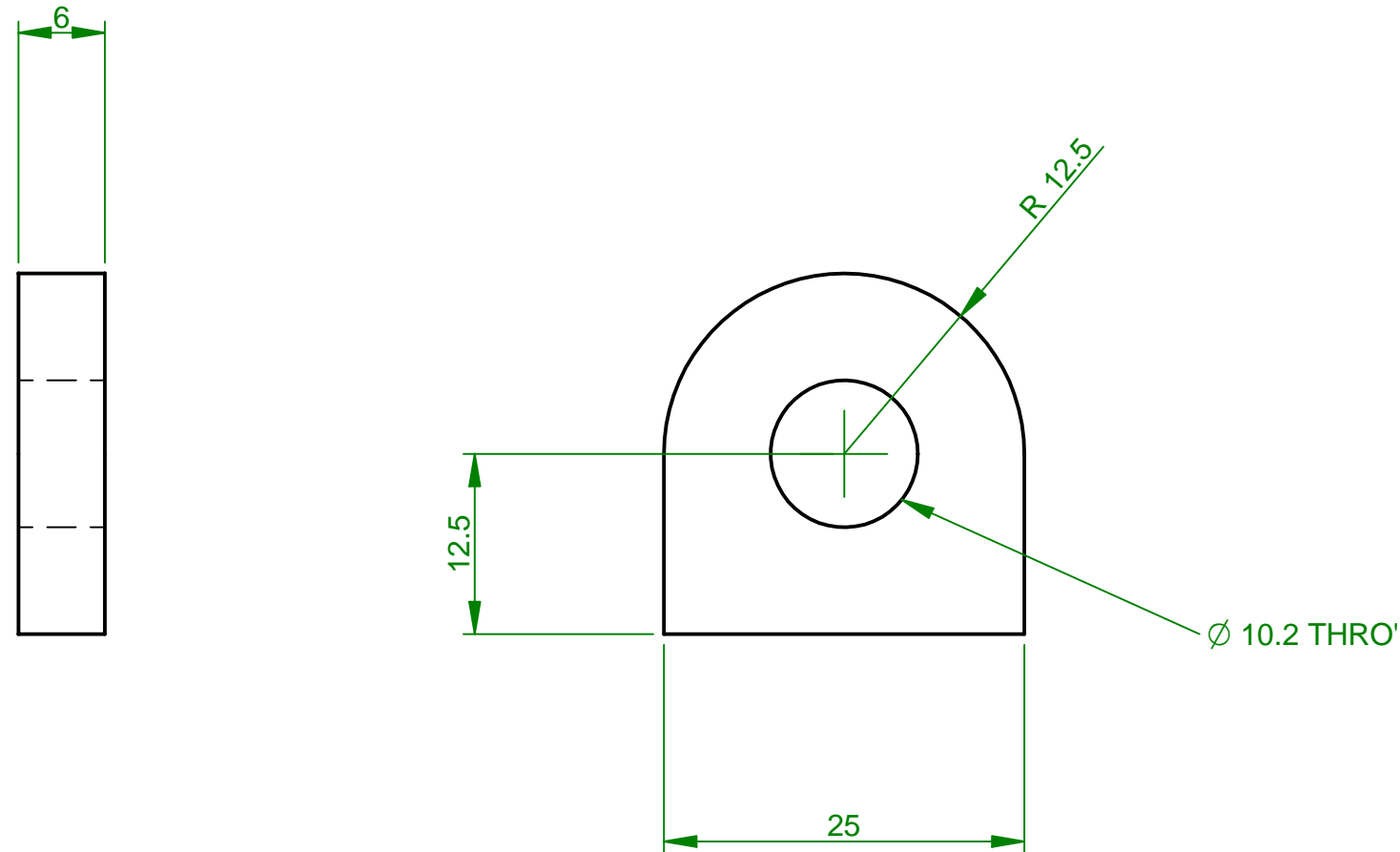
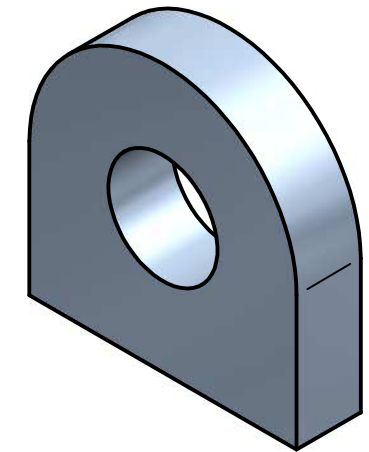
<p>©2009 Crown Copyright DSA All rights reserved</p> <p>Drawing based on BS8888 Dimensions in Millimeters Remove all burrs and sharp edges</p>	<p>Third Angle Projection</p>	<p>Tolerances Unless otherwise specified</p> <p>2 Dec Places ± 0.1mm 1 Dec Place ± 0.5mm 0 - 1000 ± 1 mm 1000 - 4000 ± 2 mm Over 4000 ± 3 mm</p>	<p>Orig. Scale A2</p> <p>Drawn mmorgan</p> <p>Checked I wall</p> <p>Approved m riddell</p>	<p>Material</p> <p>CR4 Steel</p> <p>Finish</p> <p>POWDER COATED</p>	<p>Issue</p> <p>2 20/07/09</p> <p>1 20/03/09</p>	<p>Date</p> <p>Mod No</p>	<p>TITLE</p> <p>FRONT PLATE</p> <p>PROJECT</p> <p>LSDT LOWER FRAME ANNEX B</p>	<p>DWG NO</p> <p>1674-01-G01-109</p>	<p>SHEET 1 OF 1</p>

POWDER COAT SEMI-GLOSS "BLACK"



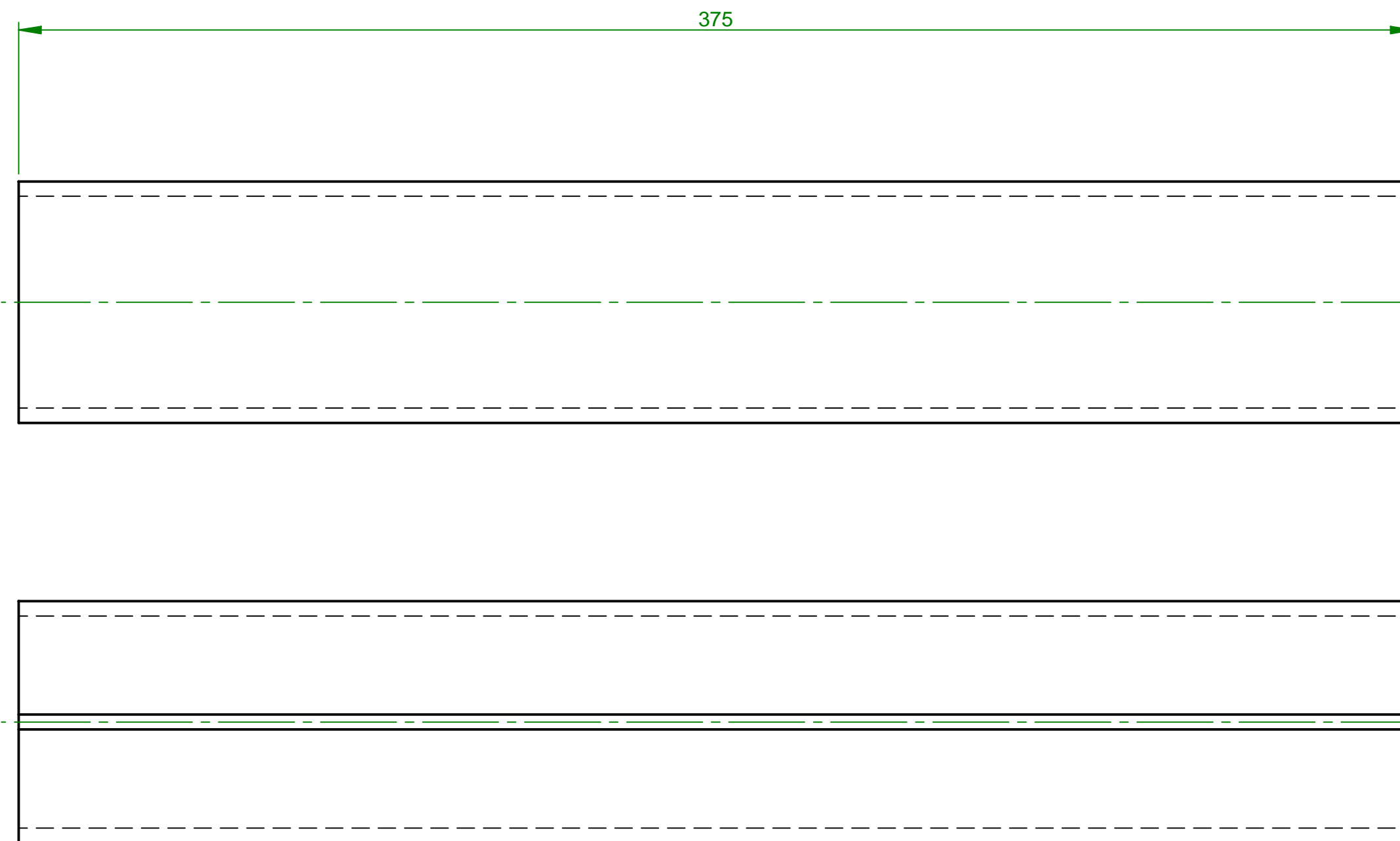
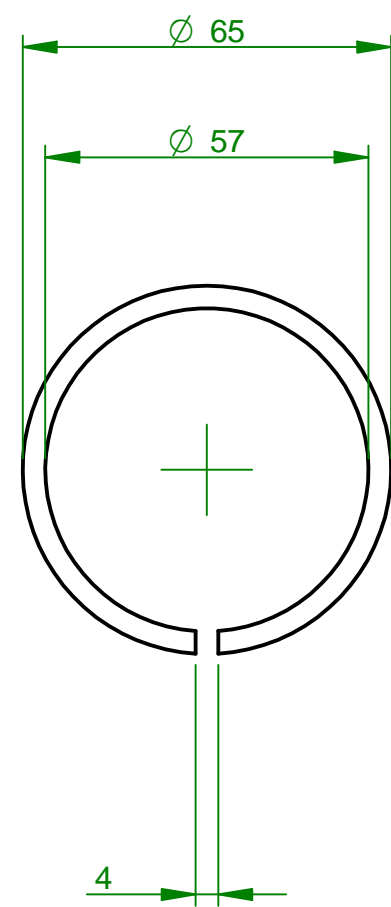
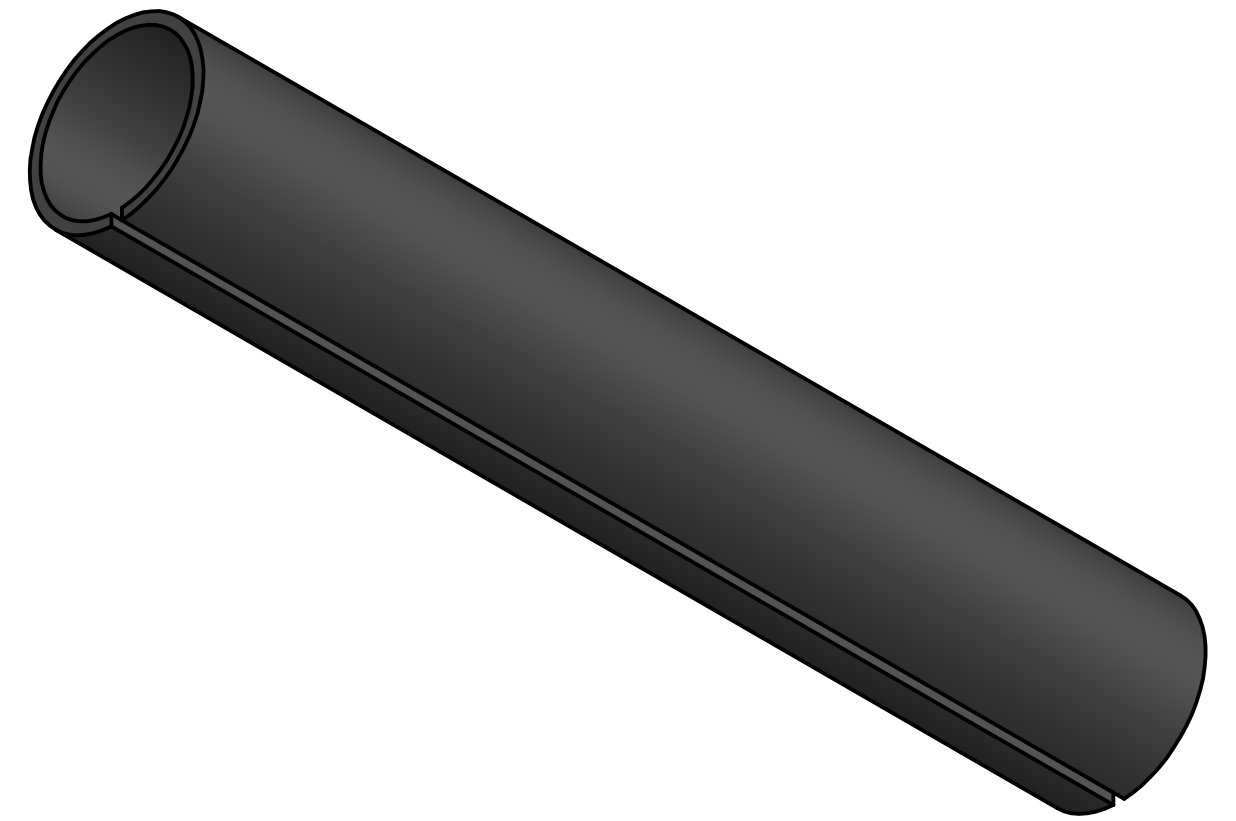
“These are the drawings for the Load Securing Demonstration Trolley (LSDT) that the DSA currently uses in the LGV Driver CPC Practical Safety Demonstration Test (Mod 4). Anyone is able to make use of the drawings to manufacture or have manufactured their own LSDT without charge, subject to the following disclaimer. The DSA makes no warranty or representation, either express or implied, as to the fitness of the drawing for a particular purpose, nor does it accept any liability for any loss or damage, however arising, from use of the drawings. The drawings are provided as they are and any user makes use of them at their own risk. The DSA reserves the right to update the drawings at any time without notice.”

<p>©2009 Crown Copyright DSA All rights reserved</p> <p>Drawing based on BS8888 Dimensions in Millimeters Remove all burrs and sharp edges</p>	<p>Third Angle Projection</p>	<p>Tolerances Unless otherwise specified</p> <p>2 Dec Places ± 0.1mm 1 Dec Place ± 0.5mm 0 - 1000 ± 1 mm 1000 - 4000 ± 2 mm Over 4000 ± 3 mm</p>	<p>Orig. Scale A2</p> <p>Drawn mmorgan</p> <p>Checked I wall</p> <p>Approved m riddell</p>	<p>Material</p> <p>CR4 Steel</p> <p>Finish</p> <p>POWDER COATED</p>	<p>2</p> <p>20/07/09</p>	<p>TITLE</p> <p>LID</p>	<p>DWG NO</p> <p>1674-01-G01-110</p>
					<p>1</p> <p>20/03/09</p>		



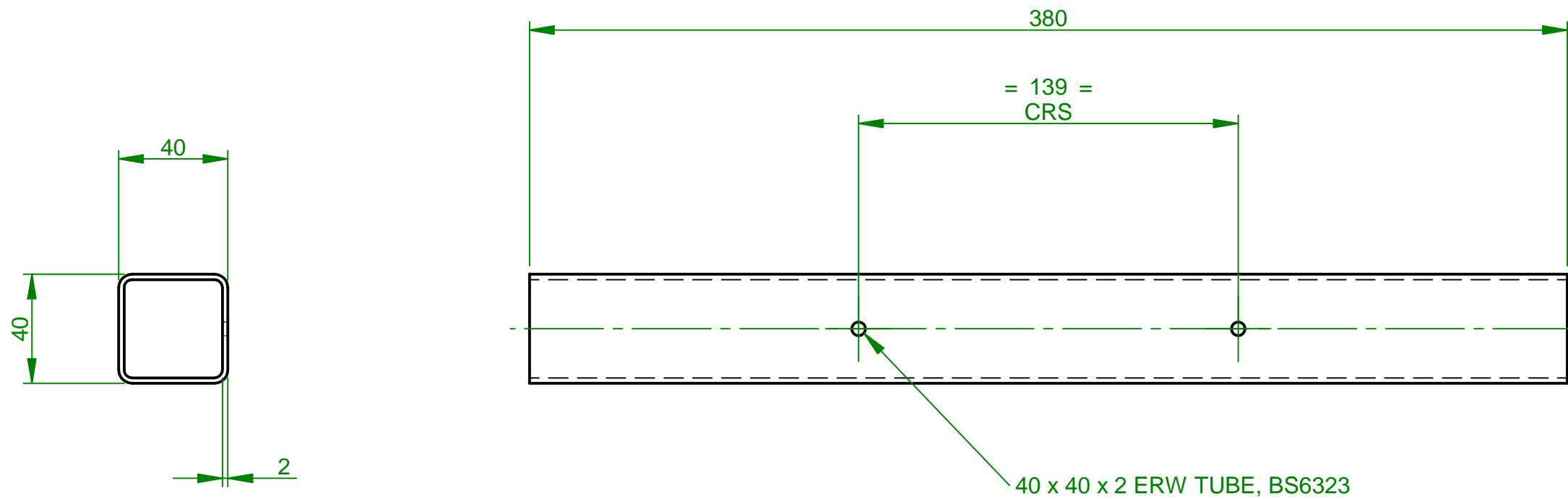
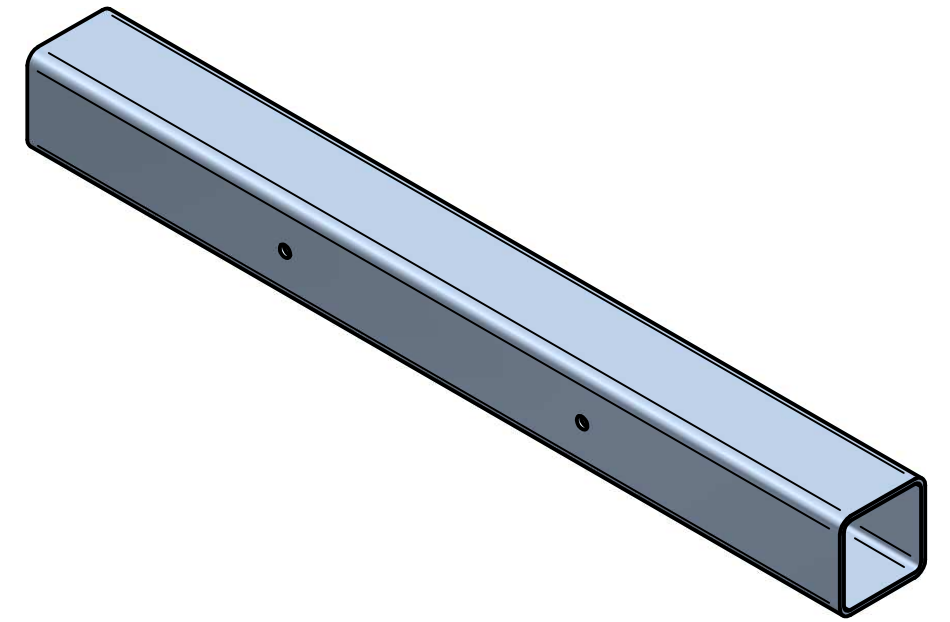
“These are the drawings for the Load Securing Demonstration Trolley (LSDT) that the DSA currently uses in the LGV Driver CPC Practical Safety Demonstration Test (Mod 4). Anyone is able to make use of the drawings to manufacture or have manufactured their own LSDT without charge, subject to the following disclaimer. The DSA makes no warranty or representation, either express or implied, as to the fitness of the drawing for a particular purpose, nor does it accept any liability for any loss or damage, however arising, from use of the drawings. The drawings are provided as they are and any user makes use of them at their own risk. The DSA reserves the right to update the drawings at any time without notice.”

	© 2009 Crown Copyright DSA All rights reserved Drawing based on BS8888 Dimensions in Millimeters Remove all burrs and sharp edges	Third Angle Projection 	Tolerances Unless otherwise specified 2 Dec Places ± 0.1mm 1 Dec Place ± 0.5mm 0 - 1000 ± 1 mm 1000 - 4000 ± 2 mm Over 4000 ± 3 mm	Orig. Scale A3	Material Steel Finish NATURAL	2 20/07/09	TITLE LID CATCH	DWG NO 1674-01-G01-111
				Drawn mmorgan Checked l wall Approved m riddell		1 23/03/09		



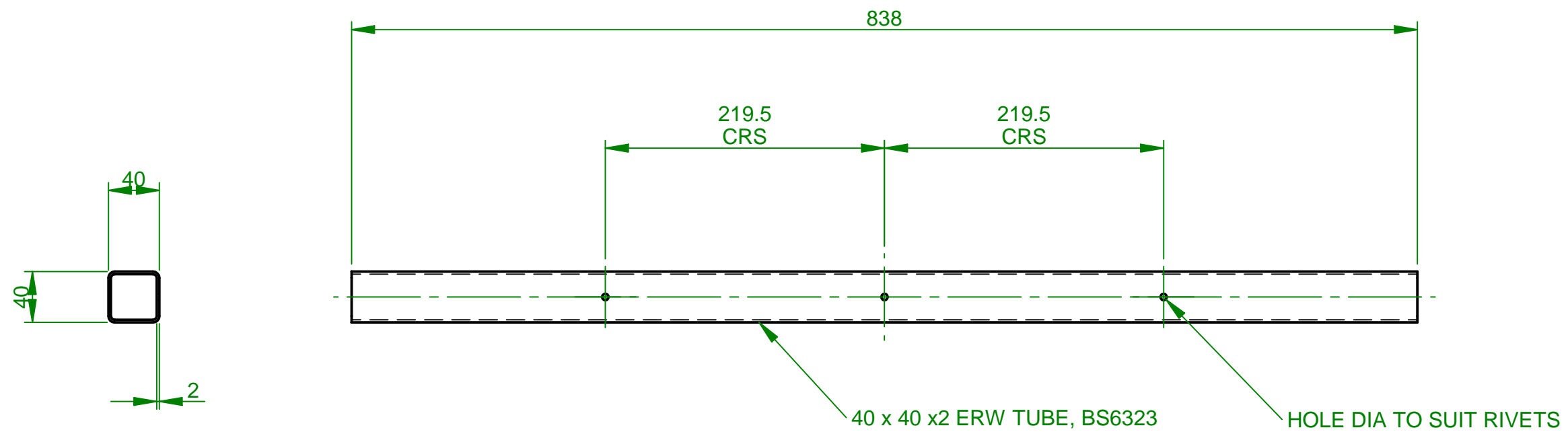
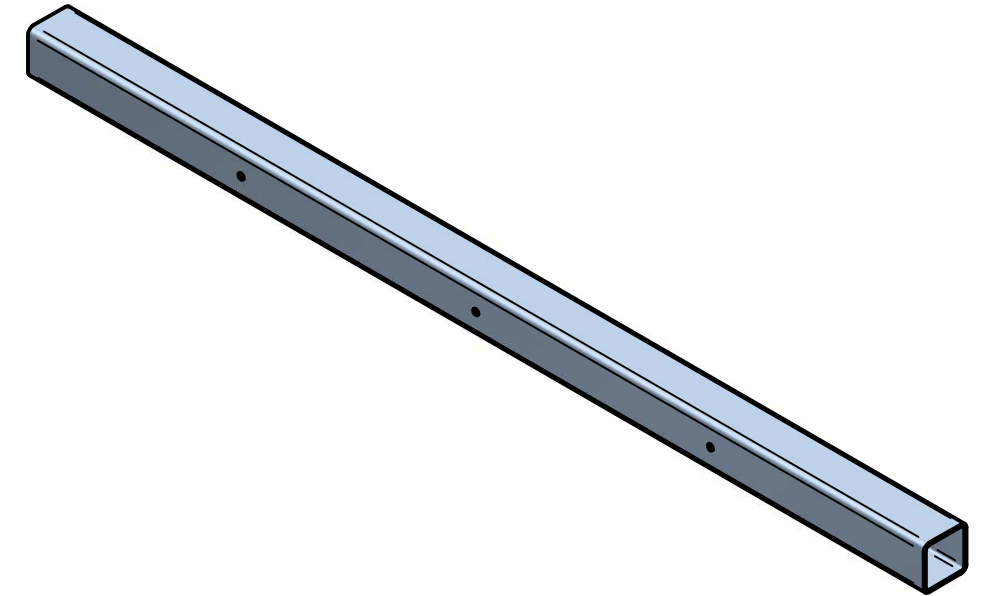
“These are the drawings for the Load Securing Demonstration Trolley (LSDT) that the DSA currently uses in the LGV Driver CPC Practical Safety Demonstration Test (Mod 4). Anyone is able to make use of the drawings to manufacture or have manufactured their own LSDT without charge, subject to the following disclaimer. The DSA makes no warranty or representation, either express or implied, as to the fitness of the drawing for a particular purpose, nor does it accept any liability for any loss or damage, however arising, from use of the drawings. The drawings are provided as they are and any user makes use of them at their own risk. The DSA reserves the right to update the drawings at any time without notice.”

<p>©2009 Crown Copyright DSA All rights reserved</p> <p>Drawing based on BS8888 Dimensions in Millimeters Remove all burrs and sharp edges</p>	<p>Third Angle Projection</p>	<p>Tolerances Unless otherwise specified</p> <p>2 Dec Places ± 0.1mm 1 Dec Place ± 0.5mm 0 - 1000 ± 1mm 1000 - 4000 ± 2mm Over 4000 ± 3mm</p>	<p>Orig. Scale A2</p> <p>Drawn mmorgan</p> <p>Checked l wall</p> <p>Approved m riddell</p>	<p>Material</p> <p>PLASTIC</p> <p>Finish</p> <p>NATURAL</p>	<p>Issue</p> <p>2</p> <p>Date</p> <p>20/07/09</p>	<p>Mod No</p>	<p>TITLE</p> <p>PLASTIC PIPE</p>	<p>PROJECT</p> <p>LSDT UPPER & LOWER FRAMES ANNEX B</p>	<p>DWG NO</p> <p>1674-01-G01-112</p>



“These are the drawings for the Load Securing Demonstration Trolley (LSDT) that the DSA currently uses in the LGV Driver CPC Practical Safety Demonstration Test (Mod 4). Anyone is able to make use of the drawings to manufacture or have manufactured their own LSDT without charge, subject to the following disclaimer. The DSA makes no warranty or representation, either express or implied, as to the fitness of the drawing for a particular purpose, nor does it accept any liability for any loss or damage, however arising, from use of the drawings. The drawings are provided as they are and any user makes use of them at their own risk. The DSA reserves the right to update the drawings at any time without notice.”

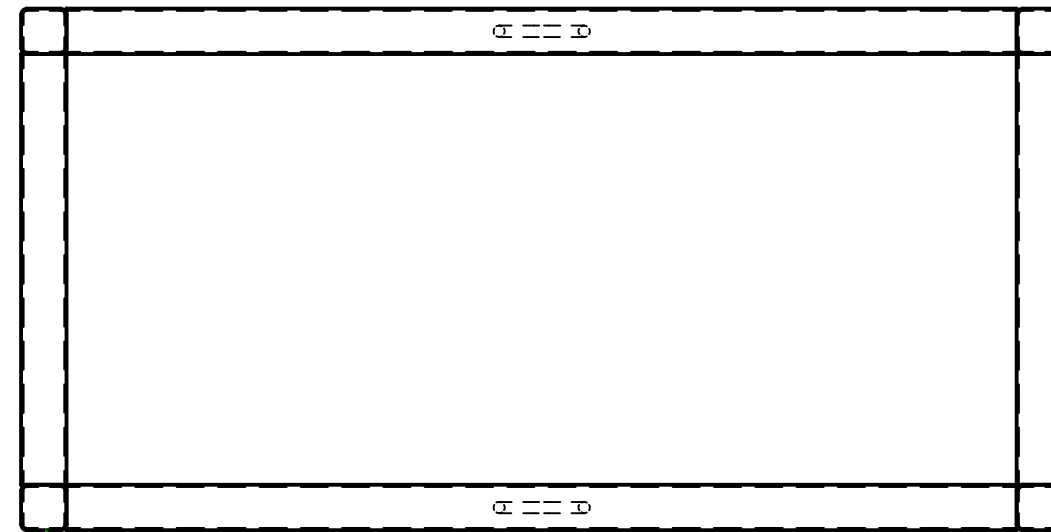
	© 2009 Crown Copyright DSA All rights reserved Drawing based on BS8888 Dimensions in Millimeters Remove all burrs and sharp edges	Third Angle Projection 	Tolerances Unless otherwise specified 2 Dec Places ± 0.1mm 1 Dec Place ± 0.5mm 0 - 1000 ± 1 mm 1000 - 4000 ± 2 mm Over 4000 ± 3 mm	Orig. Scale A3	Material Steel Finish NATURAL		TITLE	DWG NO 1674-01-G01-113 SHEET 1 OF 1
				Drawn mmorgan Checked l wall Approved m riddell		2 20/07/09 1 23/03/09 Issue Date Mod No	PROJECT LSDT LOWER FRAME ANNEX B	



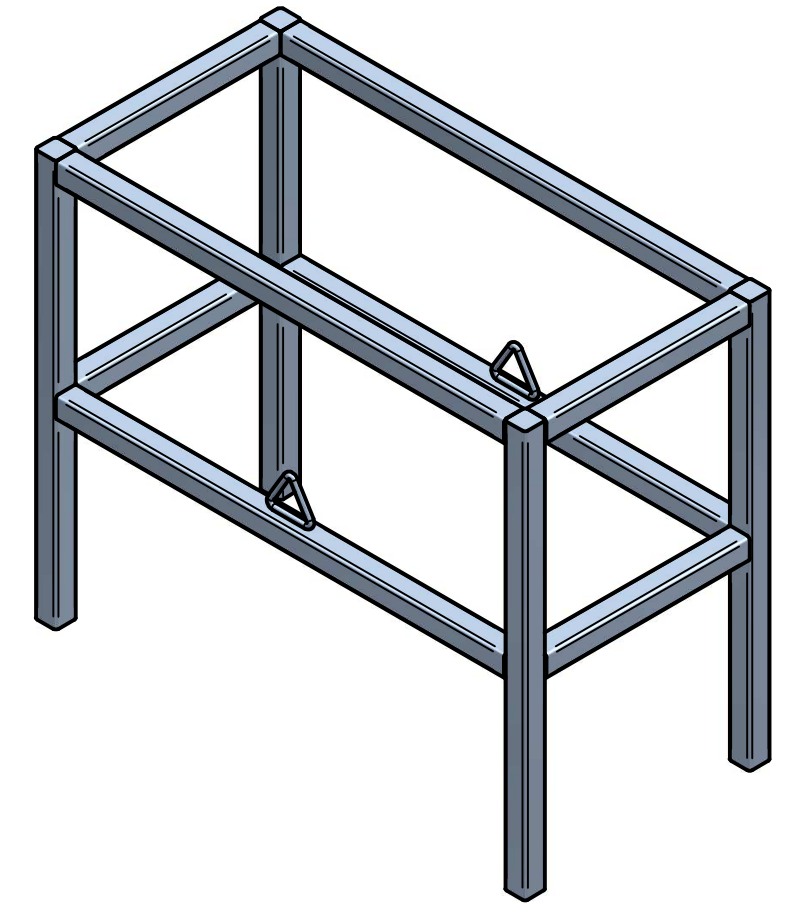
“These are the drawings for the Load Securing Demonstration Trolley (LSDT) that the DSA currently uses in the LGV Driver CPC Practical Safety Demonstration Test (Mod 4). Anyone is able to make use of the drawings to manufacture or have manufactured their own LSDT without charge, subject to the following disclaimer. The DSA makes no warranty or representation, either express or implied, as to the fitness of the drawing for a particular purpose, nor does it accept any liability for any loss or damage, however arising, from use of the drawings. The drawings are provided as they are and any user makes use of them at their own risk. The DSA reserves the right to update the drawings at any time without notice.”

	© 2009 Crown Copyright DSA All rights reserved Drawing based on BS8888 Dimensions in Millimeters Remove all burrs and sharp edges	Third Angle Projection 	Tolerances Unless otherwise specified 2 Dec Places ± 0.1mm 1 Dec Place ± 0.5mm 0 - 1000 ± 1 mm 1000 - 4000 ± 2 mm Over 4000 ± 3 mm	Orig. Scale A3	Material Steel	Issue 2 Date 20/07/09	TITLE LONG HORIZONTAL TUBE WITH RIVET HOLES	DWG NO 1674-01-G01-114
				Drawn mmorgan Checked l wall Approved m riddell	Finish NATURAL	Issue 1 Date 06/05/09	PROJECT LSDT LOWER FRAME ANNEX B	SHEET 1 OF 1

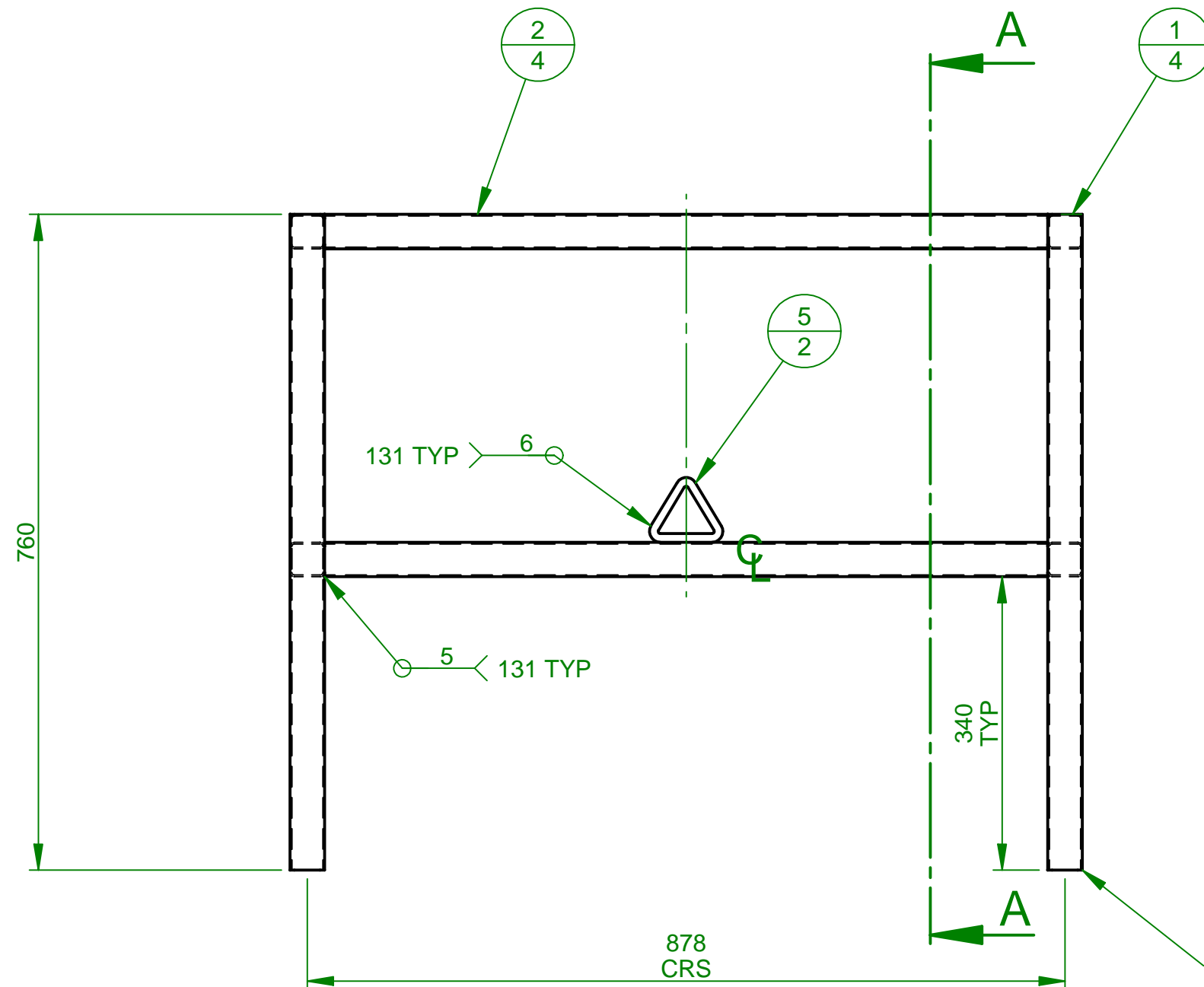
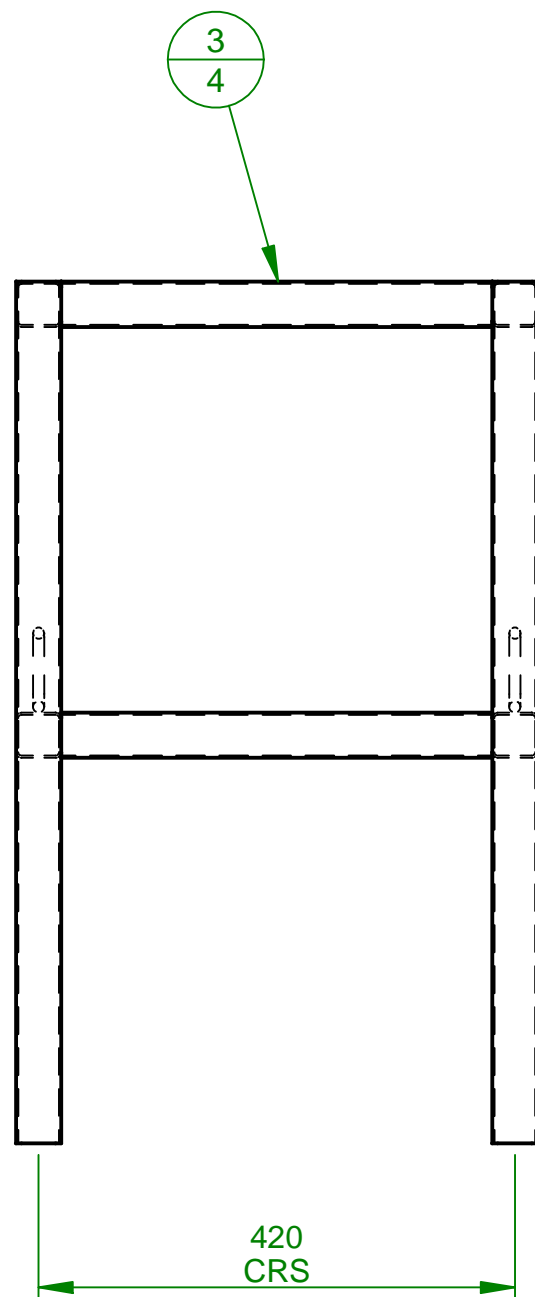
Item Number	Document Number	Title	Material	Quantity
1	1674-01-G01-201	VERTICAL TUBE	Steel	4
2	1674-01-G01-202	LONG HORIZONTAL TUBE	Steel	4
3	1674-01-G01-203	SHORT HORIZONTAL TUBE	Steel	4
5	1 TON CBF	1 TON CBF ANCHOR BRACKET	Steel	2



END CAPS TO BE ON TOPS OF VERTICAL TUBES.



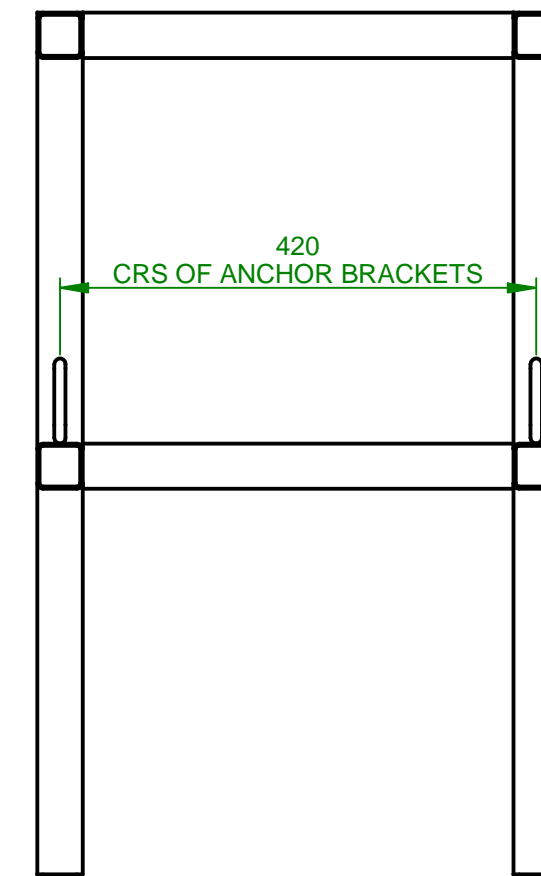
POWDER COAT SEMI-GLOSS "BLACK"



GRIND ALL WELDS FLUSH TO SIDES OF FRAME.

REMOVE 160mm OF INTERNAL WELD SEAM TO ENABLE "SPIGOT TUBE" 1674-01-G01-104 TO SLIDE INSIDE AFTER BEING POWDER COATED, OR ALTERNATIVELY USE "SEAMLESS" TUBE HERE. TYP

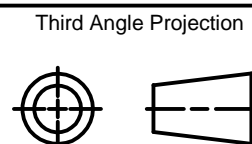
SECTION A-A



"These are the drawings for the Load Securing Demonstration Trolley (LSDT) that the DSA currently uses in the LGV Driver CPC Practical Safety Demonstration Test (Mod 4). Anyone is able to make use of the drawings to manufacture or have manufactured their own LSDT without charge, subject to the following disclaimer. The DSA makes no warranty or representation, either express or implied, as to the fitness of the drawing for a particular purpose, nor does it accept any liability for any loss or damage, however arising, from use of the drawings. The drawings are provided as they are and any user makes use of them at their own risk. The DSA reserves the right to update the drawings at any time without notice."



©2009 Crown Copyright DSA
All rights reserved
Drawing based on BS8888
Dimensions in Millimeters
Remove all burrs and sharp edges



Tolerances
Unless otherwise specified
2 Dec Places ± 0.1mm
1 Dec Place ± 0.5mm
0 - 1000 ± 1mm
1000 - 4000 ± 2mm
Over 4000 ± 3mm

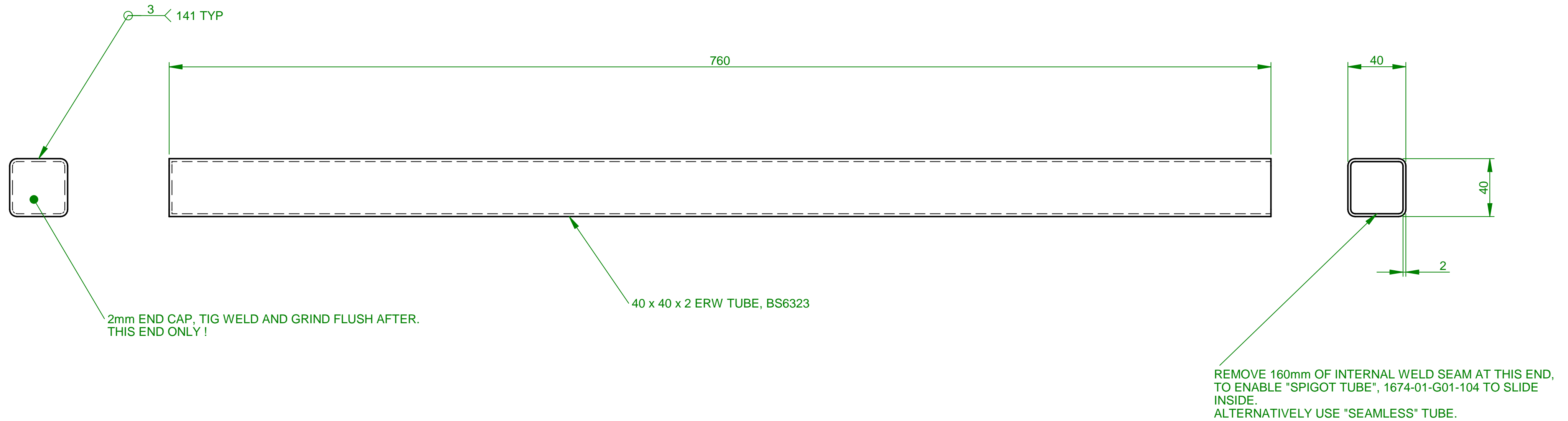
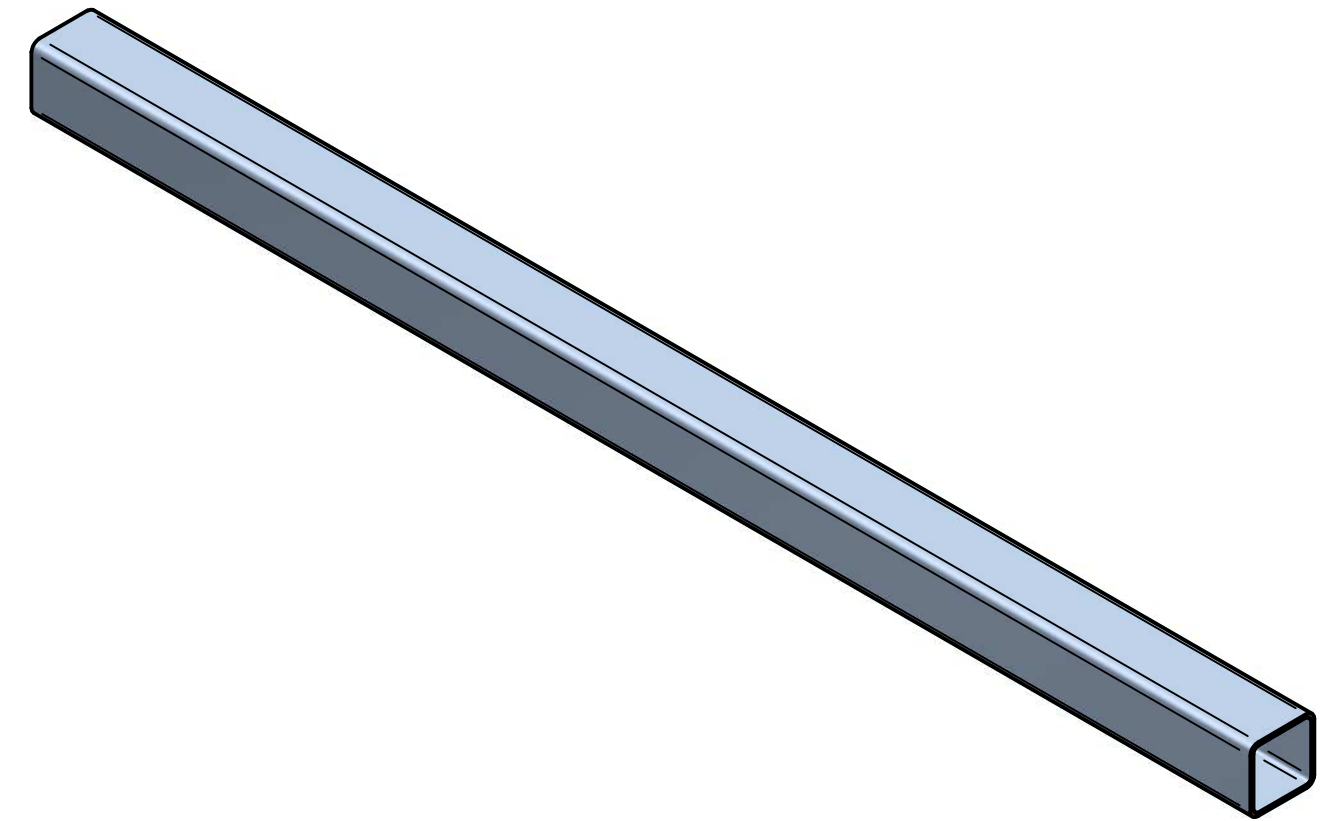
Orig. Scale A2
Drawn mmorgan
Checked I wall
Approved m riddell

Material
Finish
POWDER COATED

2	20/07/09	
1	23/03/09	
Issue	Date	Mod No

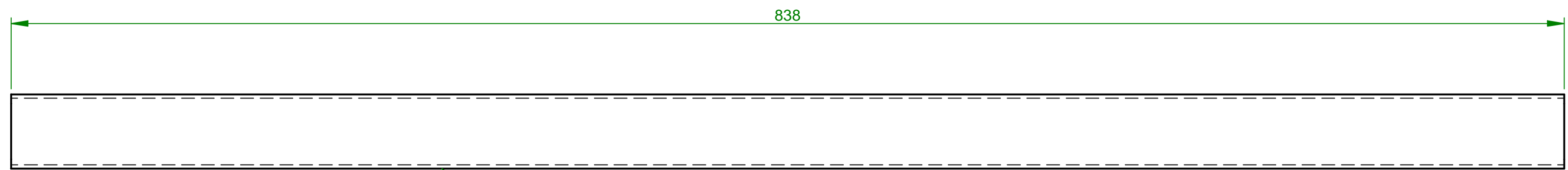
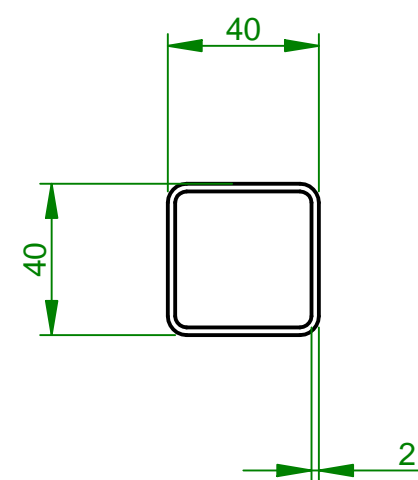
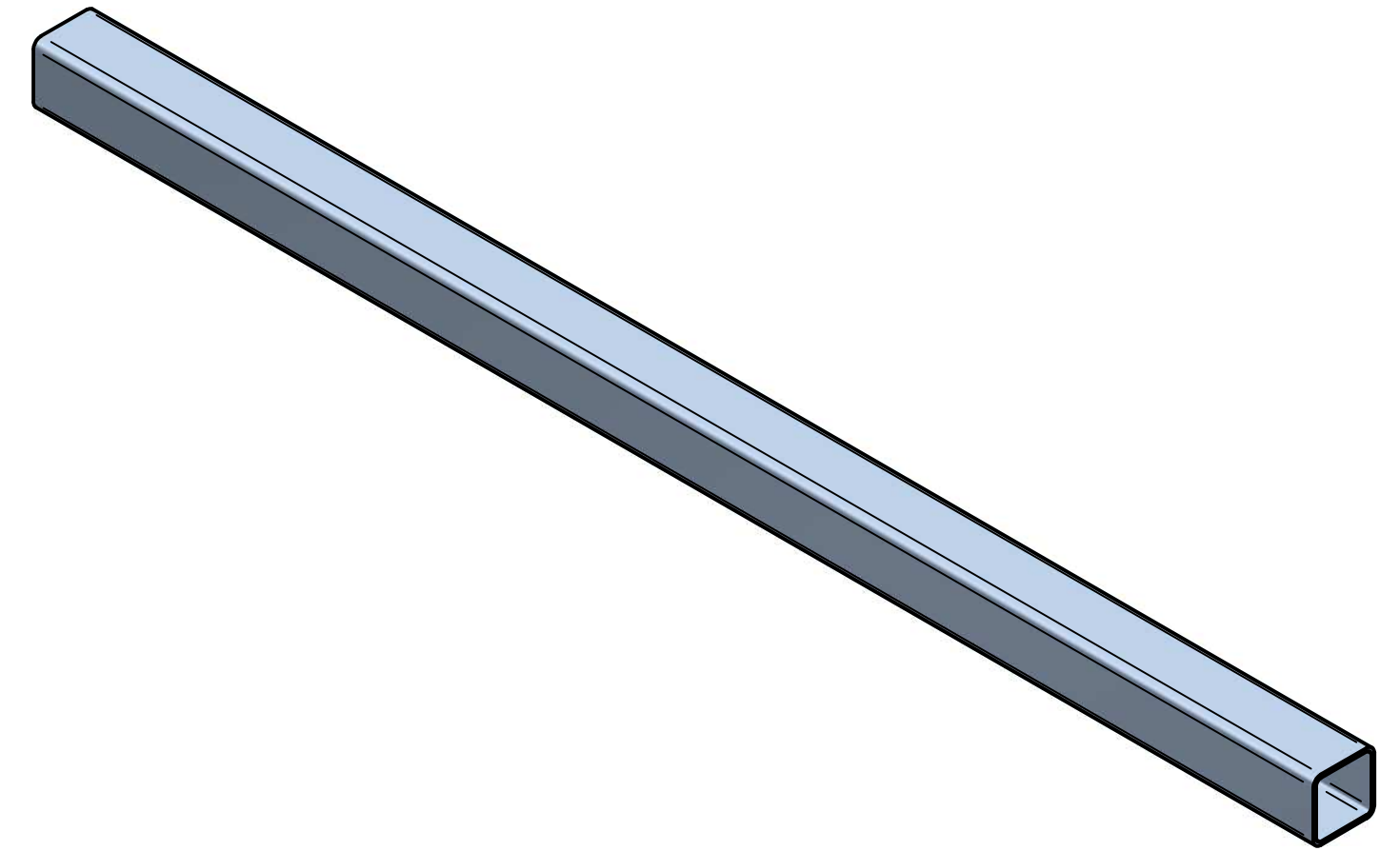
TITLE
UPPER FRAME ASSEMBLY
PROJECT
LSDT UPPER FRAME ANNEX B

DWG NO
1674-01-G01-200
SHEET 1 OF 1



“These are the drawings for the Load Securing Demonstration Trolley (LSDT) that the DSA currently uses in the LGV Driver CPC Practical Safety Demonstration Test (Mod 4). Anyone is able to make use of the drawings to manufacture or have manufactured their own LSDT without charge, subject to the following disclaimer. The DSA makes no warranty or representation, either express or implied, as to the fitness of the drawing for a particular purpose, nor does it accept any liability for any loss or damage, however arising, from use of the drawings. The drawings are provided as they are and any user makes use of them at their own risk. The DSA reserves the right to update the drawings at any time without notice.”

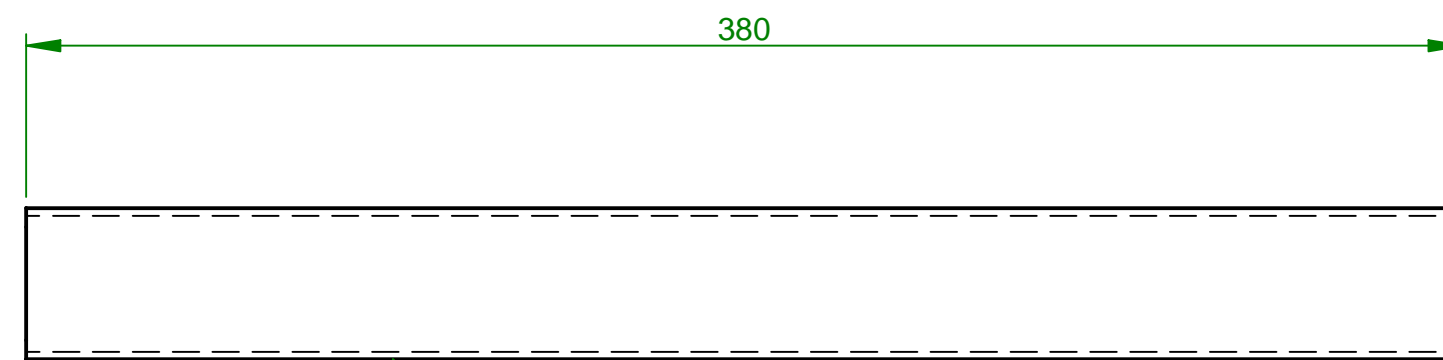
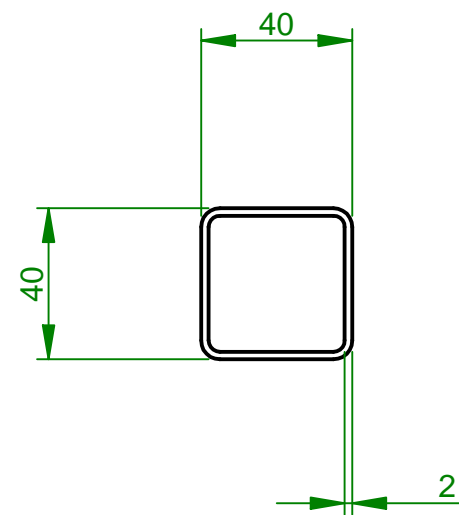
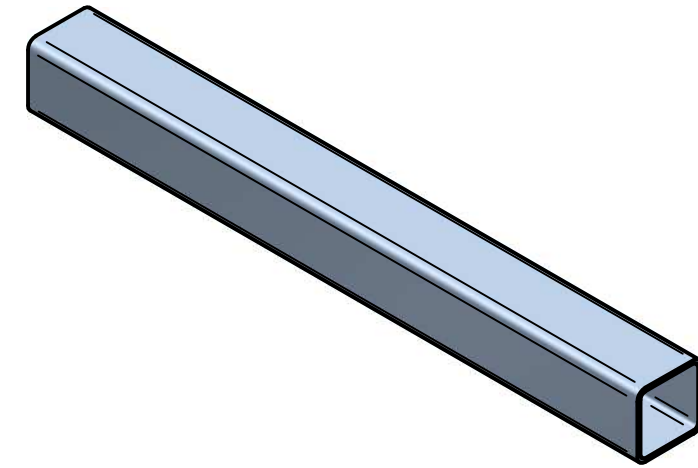
<p>©2009 Crown Copyright DSA All rights reserved</p> <p>Drawing based on BS8888 Dimensions in Millimeters Remove all burrs and sharp edges</p>	<p>Third Angle Projection</p>	<p>Tolerances Unless otherwise specified</p> <p>2 Dec Places ± 0.1mm 1 Dec Place ± 0.5mm 0 - 1000 ± 1 mm 1000 - 4000 ± 2 mm Over 4000 ± 3 mm</p>	<p>Orig. Scale A2</p> <p>Drawn mmorgan</p> <p>Checked I wall</p> <p>Approved m riddell</p>	<p>Material</p> <p>Steel</p> <p>Finish</p> <p>NATURAL</p>	<p>2</p> <p>20/07/09</p>	<p>TITLE</p> <p>VERTICAL TUBE</p>	<p>DWG NO</p> <p>1674-01-G01-201</p>		
					<p>1</p> <p>20/03/09</p>			<p>PROJECT</p> <p>LSDT UPPER FRAME ANNEX B</p>	<p>SHEET 1 OF 1</p>
					<p>Issue</p> <p>Date</p> <p>Mod No</p>				



40 x 40 x 2 ERW TUBE, BS6323

“These are the drawings for the Load Securing Demonstration Trolley (LSDT) that the DSA currently uses in the LGV Driver CPC Practical Safety Demonstration Test (Mod 4). Anyone is able to make use of the drawings to manufacture or have manufactured their own LSDT without charge, subject to the following disclaimer. The DSA makes no warranty or representation, either express or implied, as to the fitness of the drawing for a particular purpose, nor does it accept any liability for any loss or damage, however arising, from use of the drawings. The drawings are provided as they are and any user makes use of them at their own risk. The DSA reserves the right to update the drawings at any time without notice.”

<p>©2009 Crown Copyright DSA All rights reserved</p> <p>Drawing based on BS8888 Dimensions in Millimeters Remove all burrs and sharp edges</p>	<p>Third Angle Projection</p>	<p>Tolerances Unless otherwise specified</p> <p>2 Dec Places ± 0.1mm 1 Dec Place ± 0.5mm 0 - 1000 ± 1 mm 1000 - 4000 ± 2 mm Over 4000 ± 3 mm</p>	<p>Orig. Scale A2</p> <p>Drawn mmorgan</p> <p>Checked I wall</p> <p>Approved m riddell</p>	<p>Material</p> <p>Steel</p> <p>Finish</p> <p>NATURAL</p>	<p>2</p> <p>20/07/09</p>	<p>TITLE</p> <p>LONG HORIZONTAL TUBE</p>	<p>DWG NO</p> <p>1674-01-G01-202</p>
					<p>1</p> <p>20/03/09</p>		



40 x 40 x 2 ERW TUBE, BS6323

“These are the drawings for the Load Securing Demonstration Trolley (LSDT) that the DSA currently uses in the LGV Driver CPC Practical Safety Demonstration Test (Mod 4). Anyone is able to make use of the drawings to manufacture or have manufactured their own LSDT without charge, subject to the following disclaimer. The DSA makes no warranty or representation, either express or implied, as to the fitness of the drawing for a particular purpose, nor does it accept any liability for any loss or damage, however arising, from use of the drawings. The drawings are provided as they are and any user makes use of them at their own risk. The DSA reserves the right to update the drawings at any time without notice.”

<p>©2009 Crown Copyright DSA All rights reserved</p> <p>Drawing based on BS8888 Dimensions in Millimeters Remove all burrs and sharp edges</p>	<p>Third Angle Projection</p>	<p>Tolerances Unless otherwise specified</p> <p>2 Dec Places ± 0.1mm 1 Dec Place ± 0.5mm 0 - 1000 ± 1 mm 1000 - 4000 ± 2 mm Over 4000 ± 3 mm</p>	<p>Orig. Scale A2</p> <p>Drawn mmorgan</p> <p>Checked l wall</p> <p>Approved m riddell</p>	<p>Material</p> <p>Steel</p> <p>Finish</p> <p>NATURAL</p>	<p>2</p> <p>20/07/09</p>	<p>TITLE</p> <p>SHORT HORIZONTAL TUBE</p>	<p>DWG NO</p> <p>1674-01-G01-203</p>
					<p>1</p> <p>20/03/09</p>		