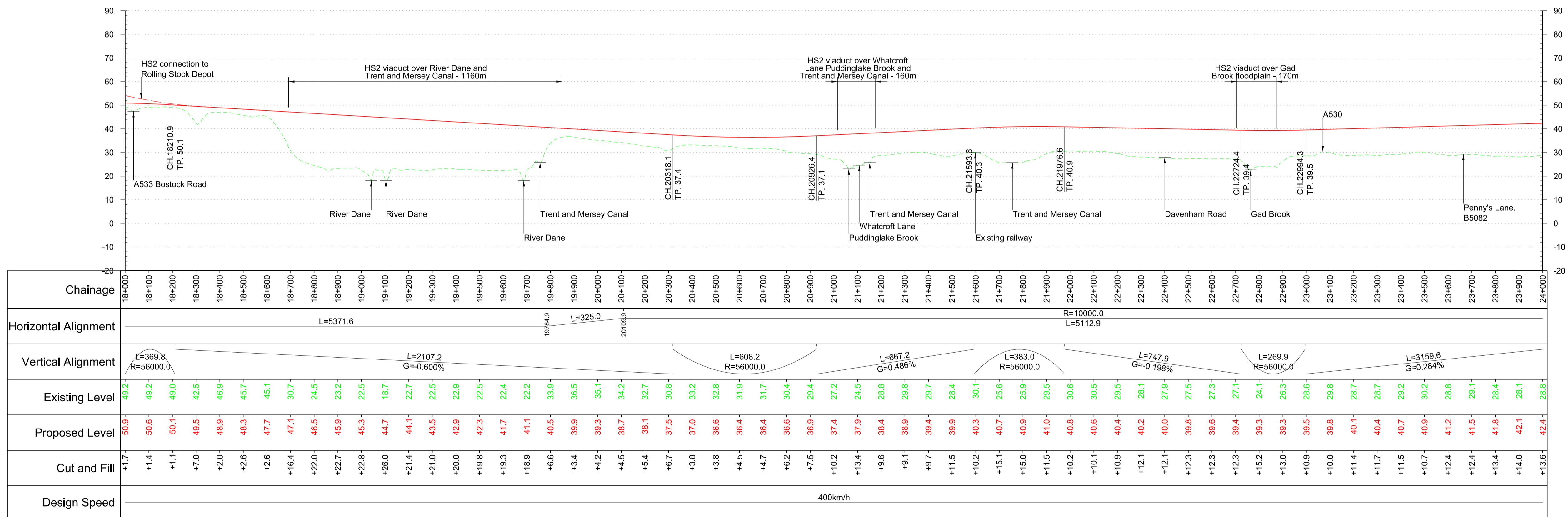
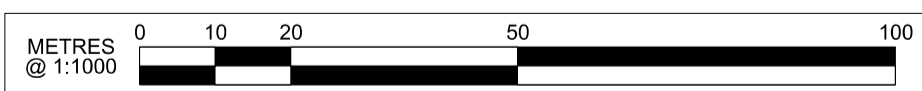
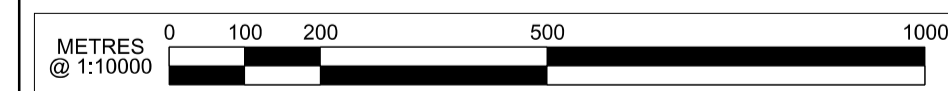


Plan  
Scale 1:10,000 @ A1



Profile  
Scale H:1:10,000 V:1:1000 @ A1



Rev	Description	Drawn	Checked	Con App	HS2 App
P02	Updated for acceptance	KB	TO	JG	
P01	First Issue	KB	TO	JG	

HS2 accepts no responsibility for any circumstances which arise from the reproduction of this document after alteration, amendment or abbreviation or if it is issued in part or issued incompletely in any way.

© Crown Copyright and database right 2017. All rights reserved. Ordnance Survey Licence number 100049190

© Crown Copyright material is reproduced with the permission of Land Registry under delegated authority from the Controller of HMSO.

This material was last updated on 2017 and may not be copied, distributed, sold or published without the formal permission of Land Registry. Only an official copy of a title plan or register obtained from the Land Registry may be used for legal or other official purposes.

Scale with caution as distortion can occur.

- Key Environmental Features Legend**
- World Heritage Site
  - Ramsar
  - Special Areas of Conservation
  - Special Protection Areas
  - SSSI
  - National Nature Reserves
  - Area of Outstanding Natural Beauty
  - National Park
  - Major Development Sites
  - Additional Development Sites
  - Scheduled Monuments
  - Registered Parks and Gardens
  - Historical Battlefields
  - Active and/or Authorised Landfill
  - Historical Landfill
  - Flood Zones
  - Listed Building Grade I
  - Listed Building Grade II\*
  - Listed Building Grade II

- Legend**
- Track Centrelines
  - Viaduct
  - Tunnel
  - Existing Railway Connection
  - HS2 Connection
  - Fully Retained Cutting/Fill
  - Major Contour
  - Ground Profile
  - Track Profile
  - Minor Contour
  - Node
  - Engineering Earthworks
  - Railway Cutting
  - Railway Embankment
  - HS2 Depot/Station Operational Boundary

Registered in England  
Registration No. 06791686  
Registered office:  
2 Snow Hill,  
Queensway,  
Birmingham, B4 6GA

Zone  
Manchester Leg North of Crewe

Design Stage  
Post-Consultation

Drawing Title  
2017 Preferred Route - HSM10B

Plan and Profile  
Sheet 4 of 6

Creator/Organator  
AECOM

Project/Contract	West Midlands to Manchester Route		
Discipline/Function	Railway Track		
Drawn	Checked	Approved	
KB	TO	JG	
Date	Scale	Size	
15/06/2017	AS SHOWN	A1	
Drawing No.	Rev.		
C320-AEC-RT-DPP-220-068104	P02		