



09 May 2017

Year: 2017 Week: 18

In This Issue:

Key messages.
Diagnostic indicators
at a glance.
Weekly report
statistics.
Total attendances.
Attendances by age.
Triage.
Respiratory.
Gastrointestinal.
Cardiac.
Introduction to charts.
Notes and caveats.
Acknowledgements.

EDSSS weekly report statistics

Including new EDs
which have recently
started reporting*.

Key messages

Data to: 07 May 2017

ED attendances for pneumonia increased slightly during week 18, particularly for the over 65 years age group (figures 13 & 14).

Data transfer problems in 4 EDs resulted in limited data being available during week 17. 1 ED has not reported since 30/01/17. We are working to re-establish connection.

Diagnostic indicators at a glance:

Further details on the syndromic indicators reported can be found on page 10.

| Indicator | Current trend |
|--------------------------------------|---------------|
| Triage Severity Ratio | no trend |
| Respiratory | no trend |
| Acute Respiratory Infection | no trend |
| Bronchitis/ Bronchiolitis | no trend |
| Influenza-like Illness | no trend |
| Pneumonia | increasing |
| Asthma/ Wheeze/ Difficulty Breathing | no trend |
| Gastrointestinal | no trend |
| Gastroenteritis | no trend |
| Cardiac | no trend |
| Myocardial Ischaemia | no trend |
| Meningitis | no trend |

| Date | Total Attendances | Triage Category Coded | | Diagnoses Coded | | EDs Reporting |
|--------------|----------------------|-----------------------|-------------|-----------------|-------------|------------------|
| | | Number | % | Number | % | |
| 01/05/2017 | 7,982 | 5,864 | 73.5 | 6,668 | 83.5 | 35 |
| 02/05/2017 | 8,008 | 6,204 | 77.5 | 6,382 | 79.7 | 34 |
| 03/05/2017 | 7,390 | 5,693 | 77.0 | 5,951 | 80.5 | 35 |
| 04/05/2017 | 7,287 | 5,597 | 76.8 | 5,916 | 81.2 | 35 |
| 05/05/2017 | 7,334 | 5,659 | 77.2 | 5,901 | 80.5 | 35 |
| 06/05/2017 | 7,386 | 5,508 | 74.6 | 6,020 | 81.5 | 35 |
| 07/05/2017 | 7,666 | 5,791 | 75.5 | 6,178 | 80.6 | 35 |
| Total | 53,053 | 40,316 | 76.0 | 43,016 | 81.1 | (max)* 35 |

3 diagnosis coding systems in use: Snomed-CT (14EDs)
ICD10 (6EDs)
CDS (16EDs)

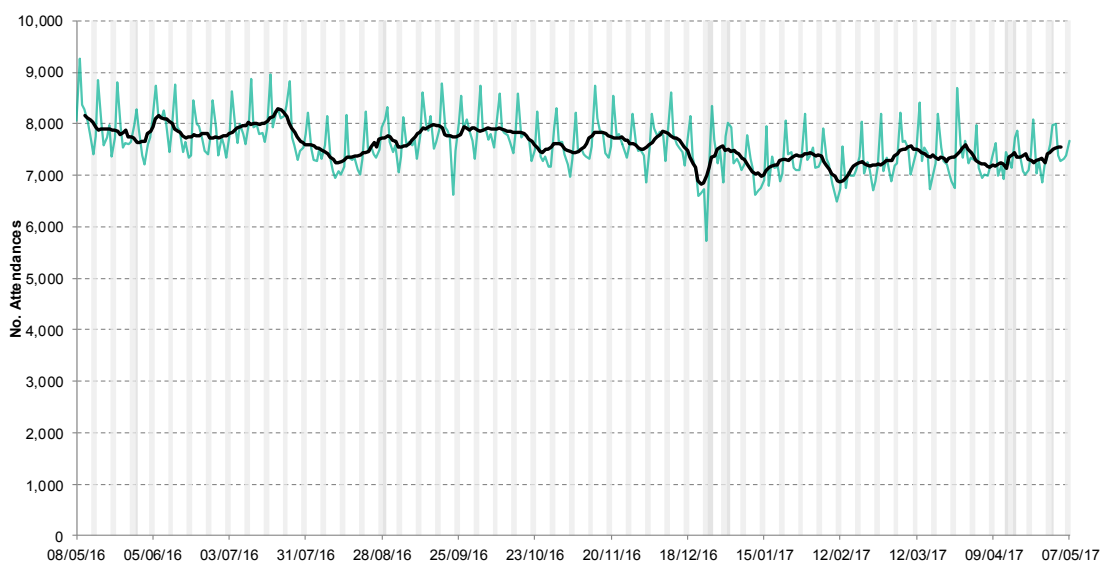
*Data from the new EDs will be presented
in charts following a 14 day data validation.

09 May 2017

Year: 2017 Week: 18

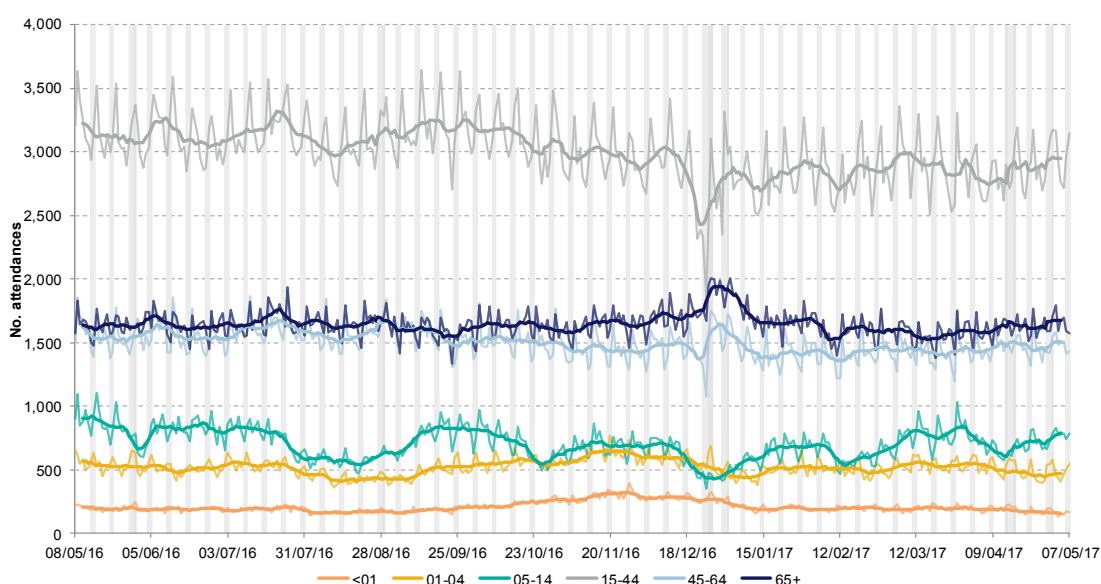
1: Total attendances.

Daily number of total attendances recorded across the EDSSS network.



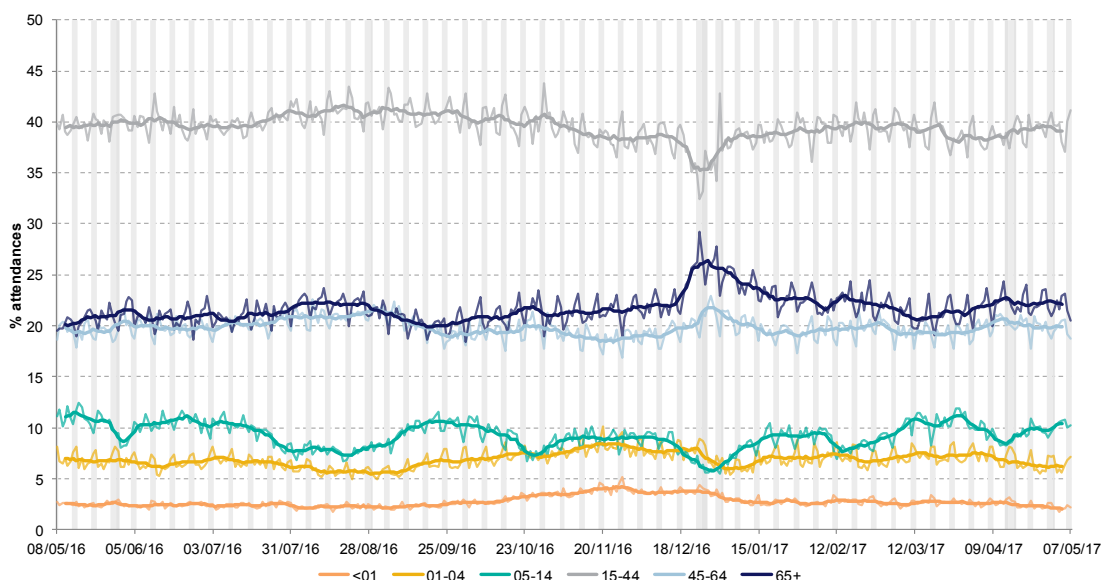
2: Daily attendances by age: Numbers.

Daily number of total attendances, by age group, recorded across the EDSSS network.



3: Daily attendances by age: Percentages.

Daily percentage of total attendances by age group, recorded across the EDSSS network.



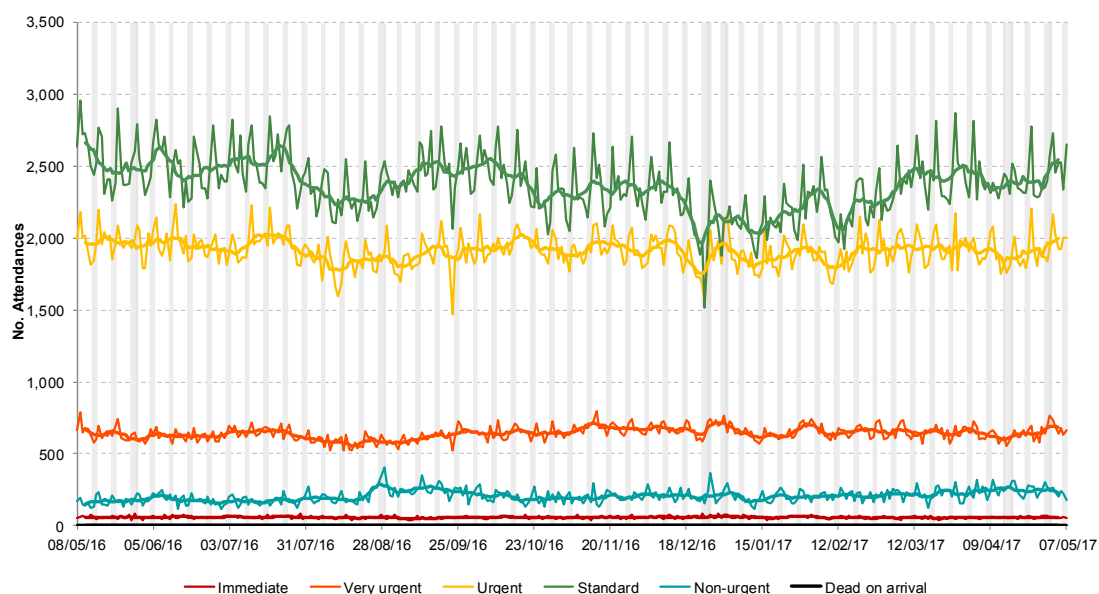
09 May 2017

Year: 2017 Week: 18

4: Triage category: severity of illness.

Triage category is assigned according to the clinical priority of each presenting patient.

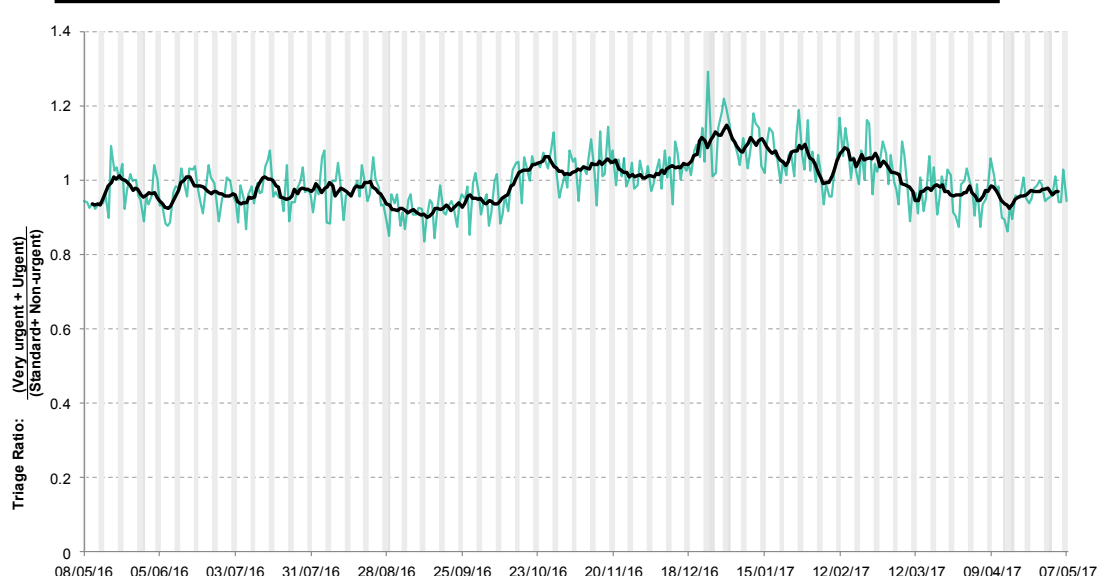
Includes 33/35 EDs.



5: Triage category severity ratio.

The ratio of patients classified as very urgent or urgent to those classified as standard or non-urgent.

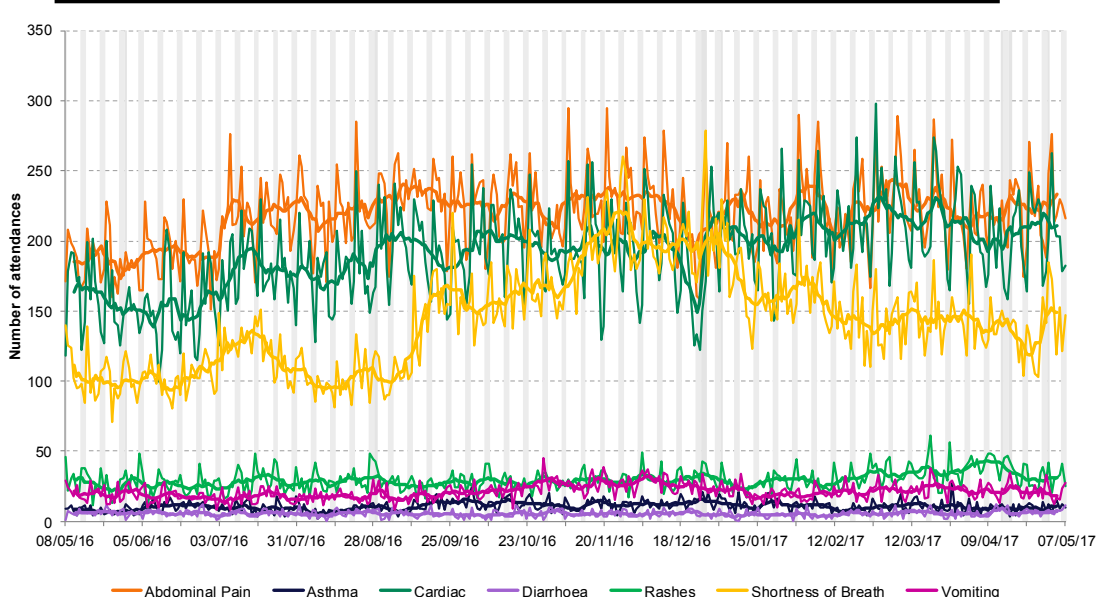
Includes 33/35 EDs.



6: Triage presentation.

Triage presentation indicators are based on the triage descriptors recorded in each ED. Data are displayed as the number of attendances recorded with triage information.

Includes 21/35 EDs which report standard terms, not using free text.



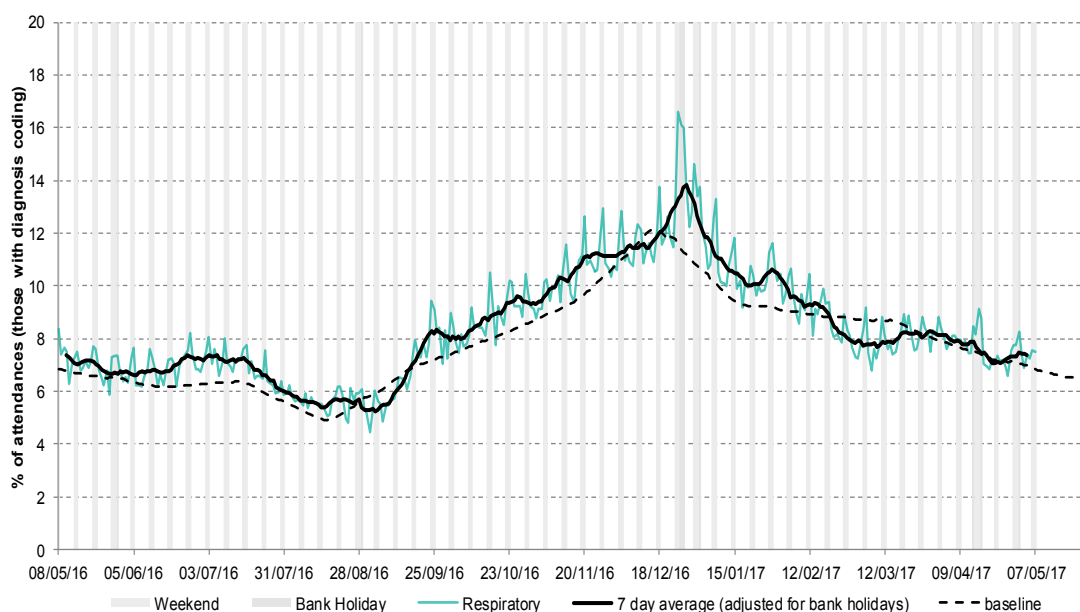
09 May 2017

Year: 2017 Week: 18

7: Respiratory.

Daily percentage of all attendances recorded as respiratory attendances across the EDSSS network.

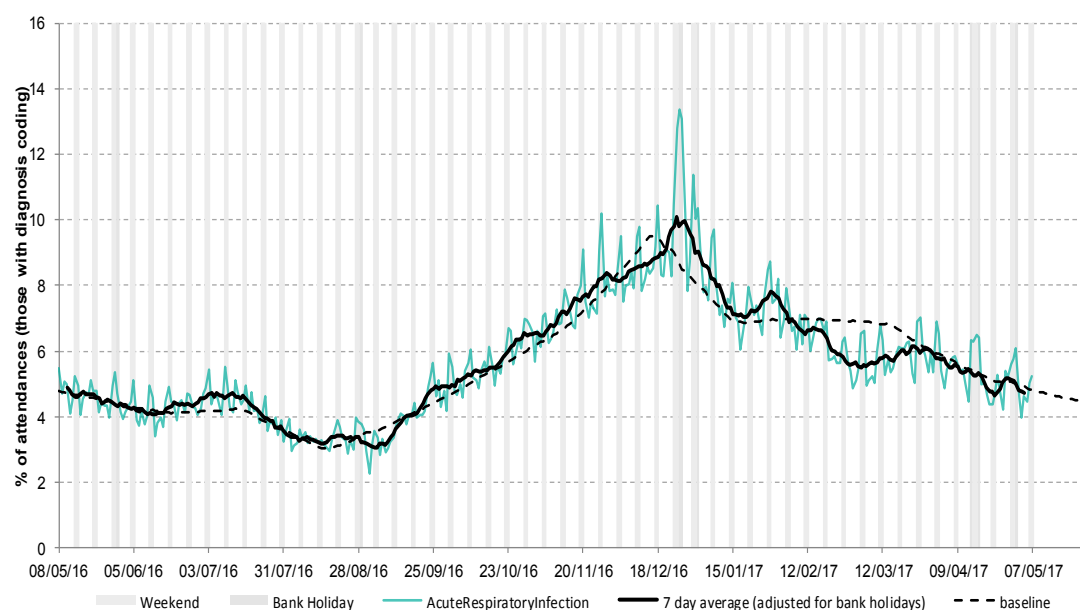
Includes 35/35 EDs.



8: Acute Respiratory Infection.

Daily percentage of all attendances recorded as acute respiratory infection attendances across the EDSSS network.

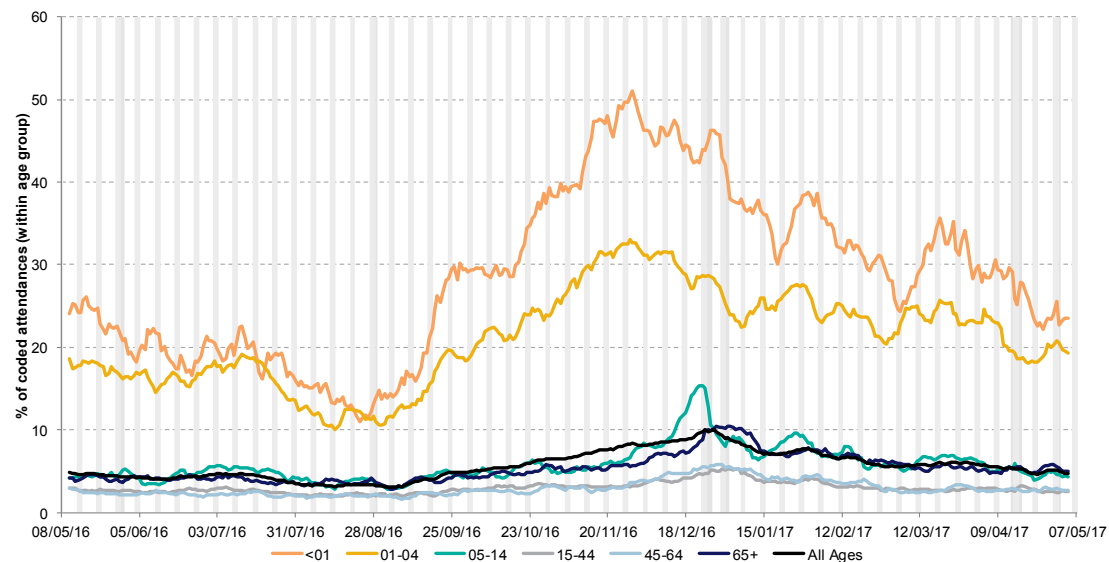
Includes 20/35 EDs.



9: Acute Respiratory Infection by age group.

7 day moving average of ARI attendances presented as a proportion of the attendances within each age group.

Includes 20/35 EDs.



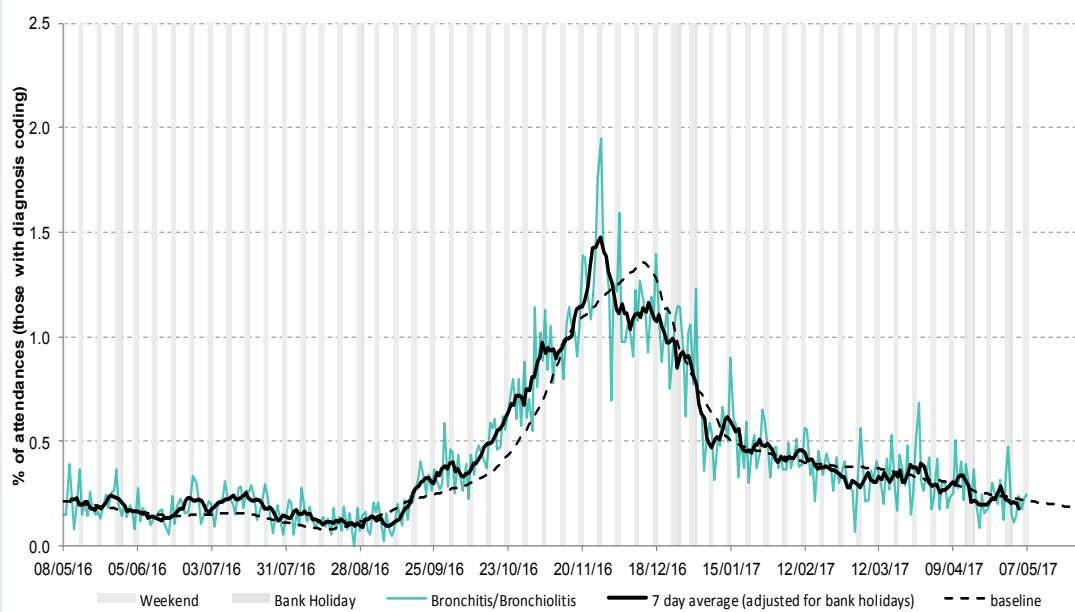
09 May 2017

Year: 2017 Week: 18

10: Bronchitis/ Bronchiolitis.

Daily percentage of all attendances recorded as bronchitis/ bronchiolitis attendances across the EDSSS network.

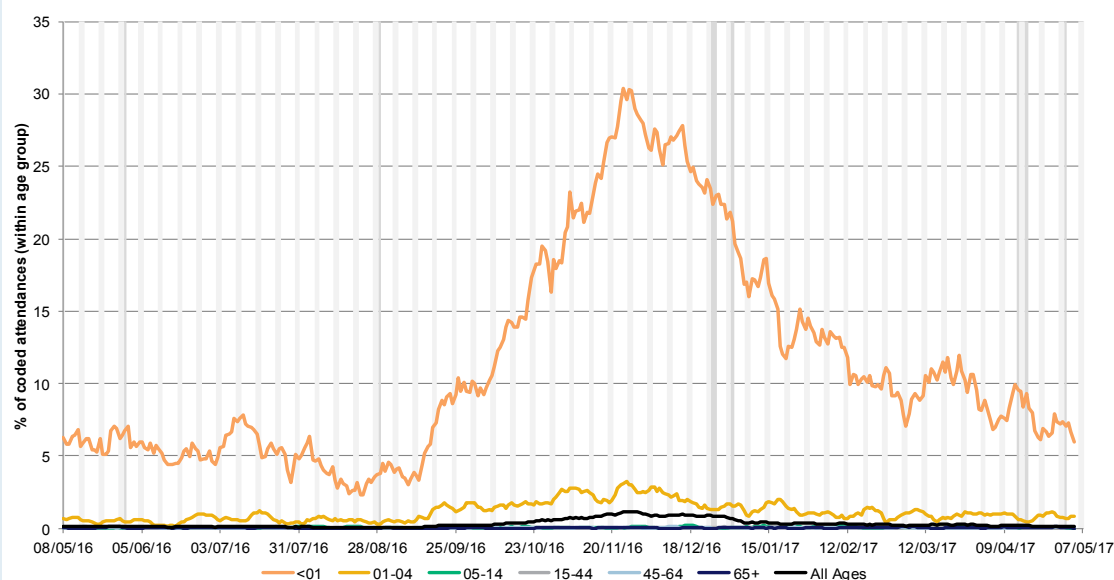
Includes 20/35 EDs.



11: Bronchitis/ Bronchiolitis by age group

7 day moving average of bronchitis/ bronchiolitis attendances presented as a proportion of the attendances within each age group.

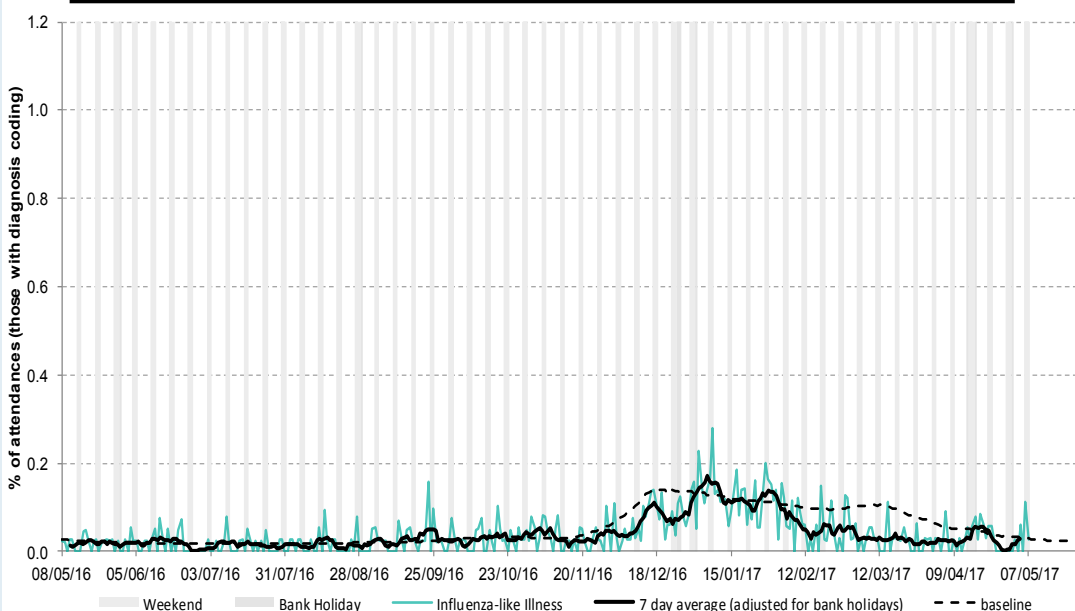
Includes 20/35 EDs.



12: Influenza-like Illness.

Daily percentage of all attendances recorded as influenza-like illness attendances across the EDSSS network.

Includes 20/35 EDs.



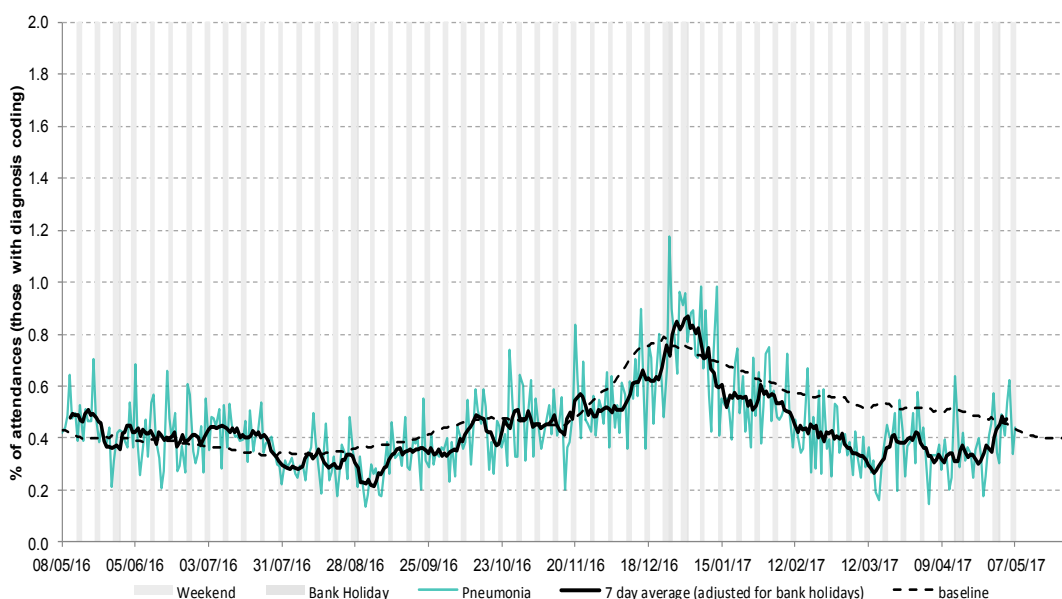
09 May 2017

Year: 2017 Week: 18

13: Pneumonia.

Daily percentage of all attendances recorded as pneumonia attendances across the EDSSS network.

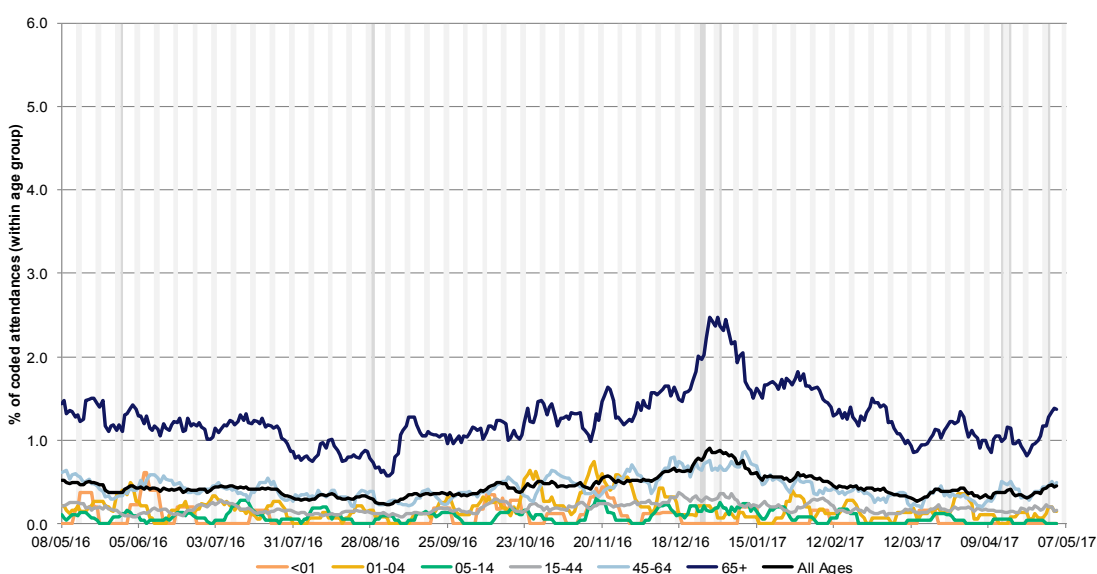
Includes 20/35 EDs.



14: Pneumonia by age group.

7 day moving average of pneumonia attendances presented as a proportion of the attendances within each age group.

Includes 20/35 EDs.



Intentionally left blank

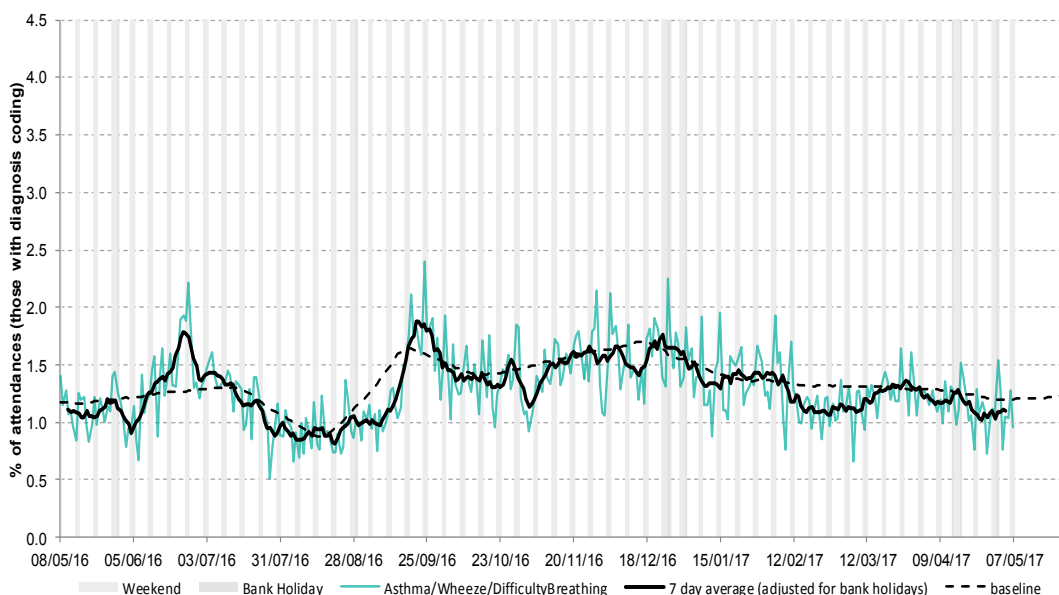
09 May 2017

Year: 2017 Week: 18

15: Asthma/Wheeze/ Difficulty Breathing.

Daily percentage of all attendances recorded as asthma/wheeze/difficulty breathing across the EDSSS network.

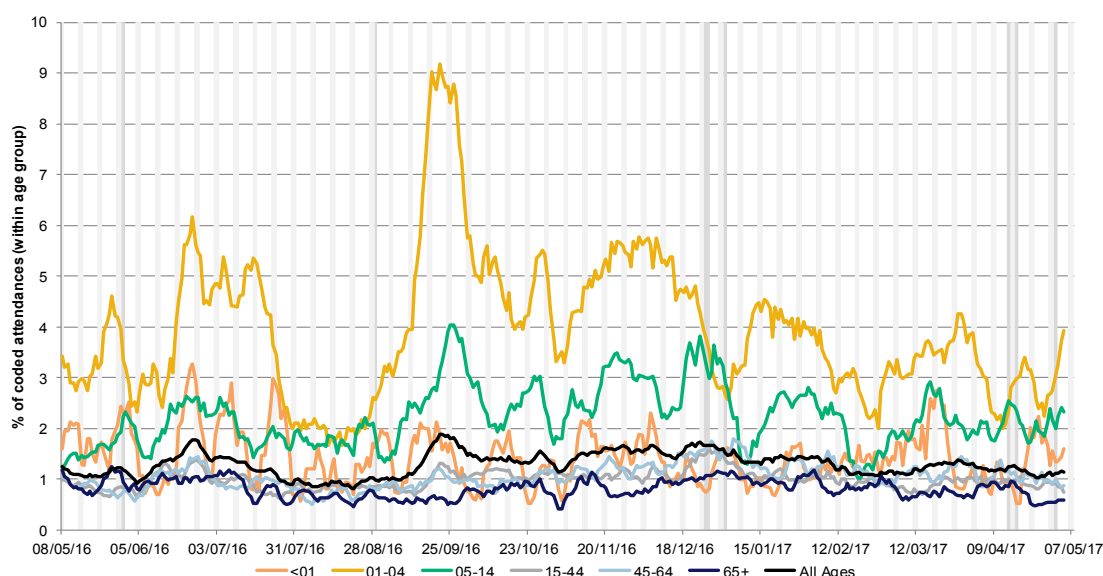
Includes 20/35 EDs.



16: Asthma/Wheeze/ Difficulty Breathing by age group.

7 day moving average of asthma/wheeze/difficulty breathing attendances presented as a proportion of the attendances within each age group.

Includes 20/35 EDs.



Intentionally left blank

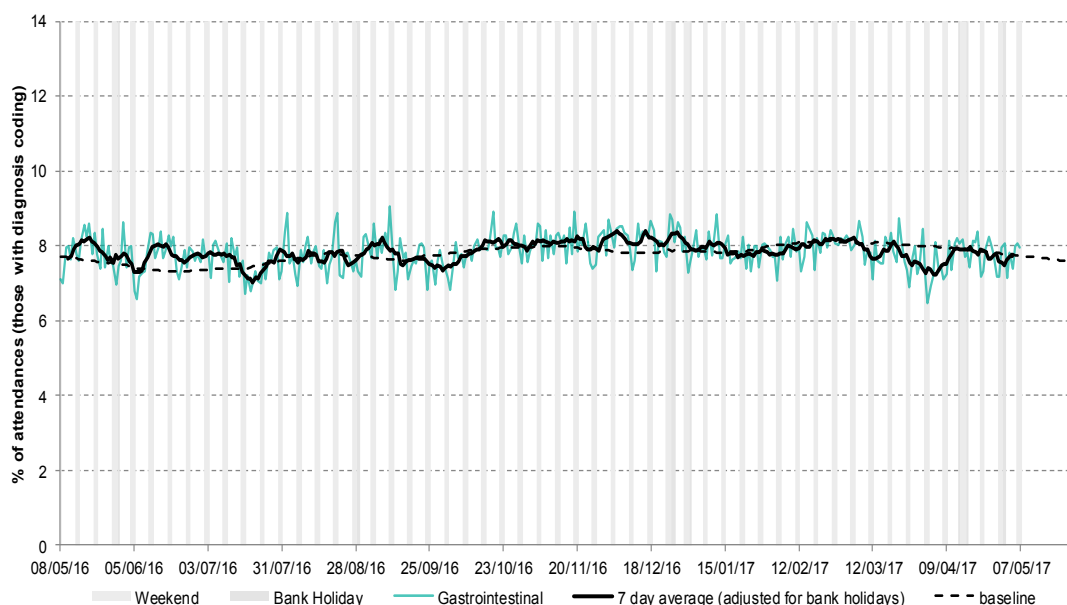
09 May 2017

Year: 2017 Week: 18

17: Gastrointestinal.

Daily percentage of all attendances recorded as gastrointestinal attendances across the EDSSS network.

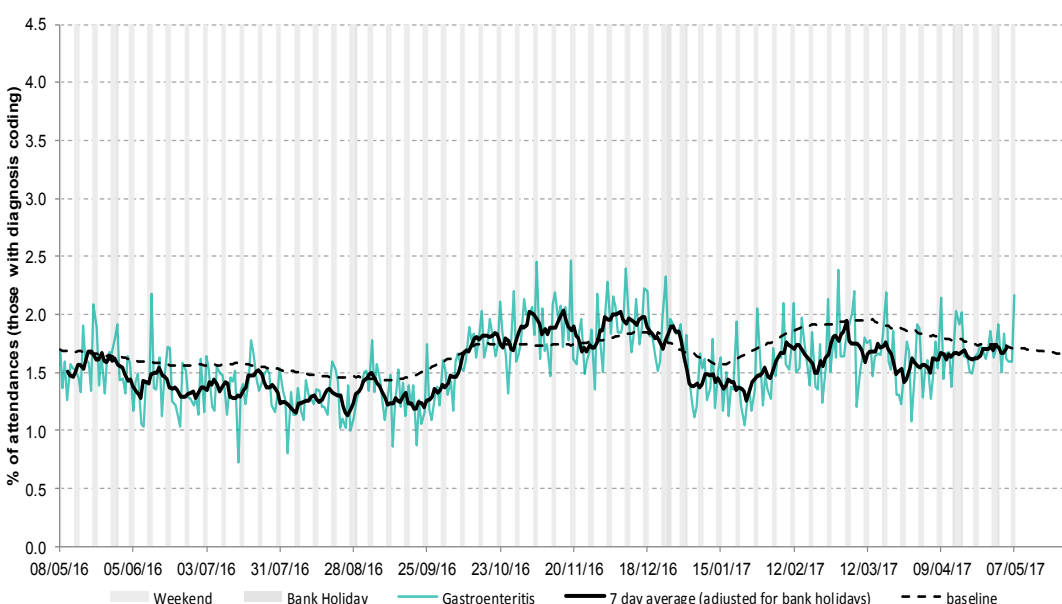
Includes 35/35 EDs.



18: Gastroenteritis

Daily percentage of all attendances recorded as gastroenteritis attendances across the EDSSS network.

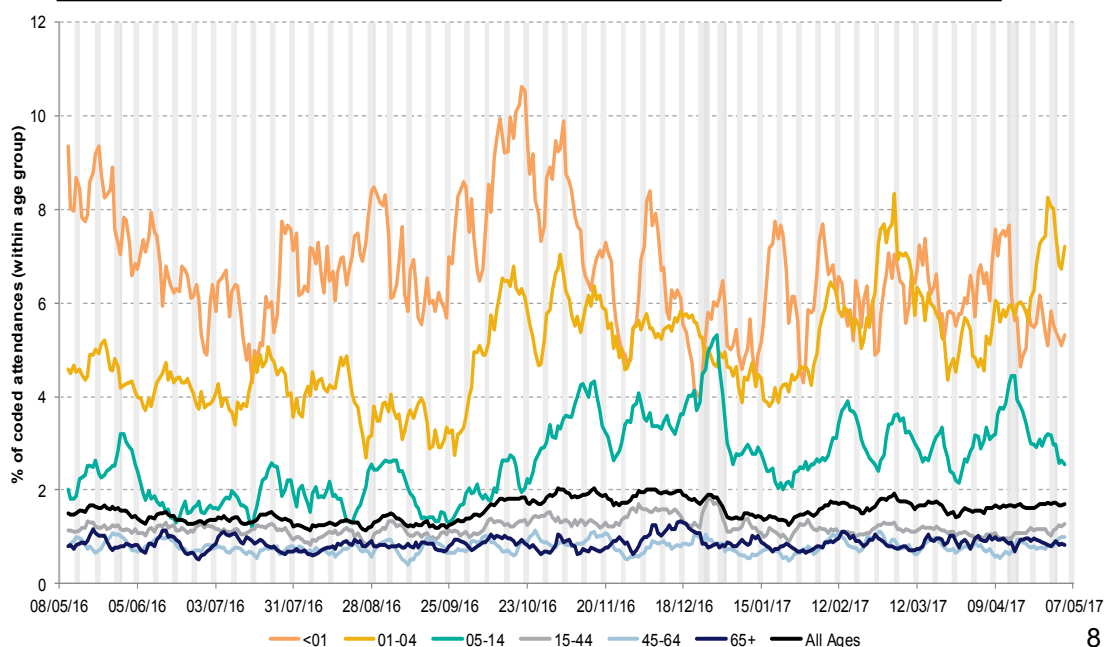
Includes 20/35 EDs.



19: Gastroenteritis by age group.

7 day moving average of gastroenteritis attendances presented as a proportion of the attendances within each age group.

Includes 20/35 EDs.



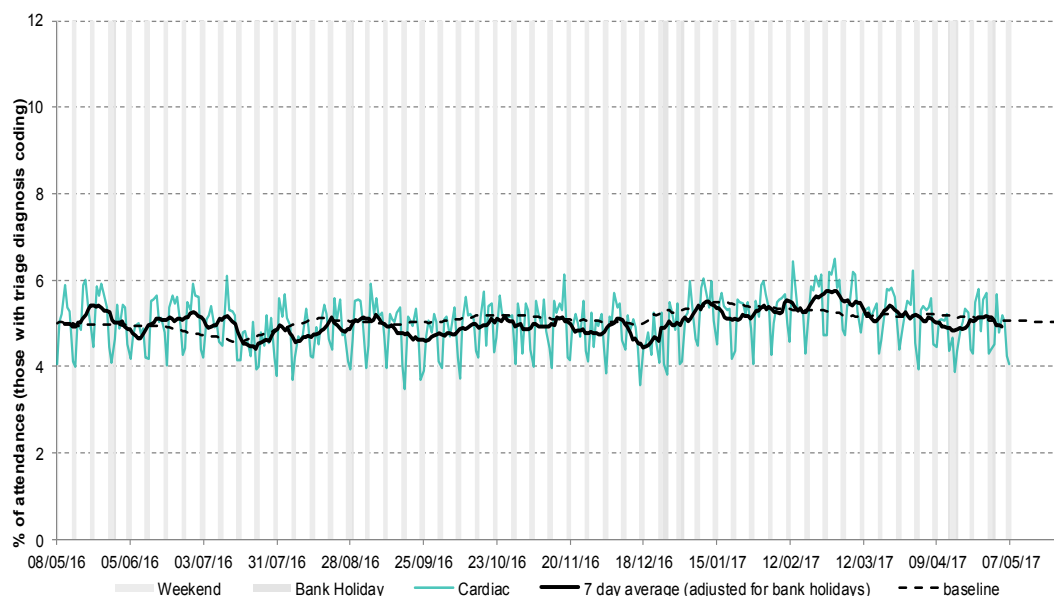
09 May 2017

Year: 2017 Week: 18

20: Cardiac.

Daily percentage of all attendances recorded as cardiac attendances across the EDSSS network.

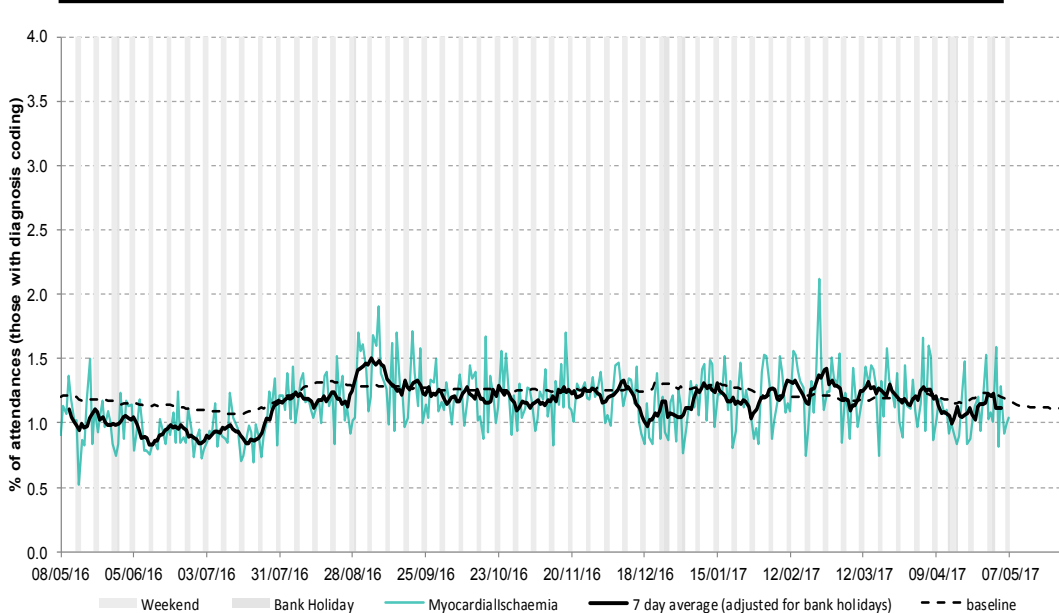
Includes 35/35 EDs.



21: Myocardial Ischaemia.

Daily percentage of all attendances recorded as myocardial ischaemia attendances across the EDSSS network.

Includes 20/35 EDs.



Intentionally left blank

09 May 2017

Year: 2017 Week: 18

Introduction to the EDSSS charts:

- ▶ Weekends and Bank holidays are marked by vertical **grey** lines (bank holidays **darker**).
- ▶ The entry of each new ED is marked by a vertical **red** line.
- ▶ **A new site is not included in charts until it has reported a minimum of 14 days.**
- ▶ A 7 day moving average is overlaid on the daily data reported in each chart, unless specified.
- ▶ Where the percentage attendances related to an individual syndromic indicator is given, the denominator used is the total number of attendances with a diagnosis code recorded.
- ▶ Baselines represent seasonally expected levels of activity and are constructed from historical data. Furthermore, they take into account any known substantial changes in data collection, population coverage or reporting practices. Baselines are refreshed using the latest data on a regular basis.

Notes and caveats:

- ▶ During July/August 2016 there were changes in clinical working practices at selected EDs which may impact on coding, and therefore the graphs/data presented in this report. Where appropriate, caveats will be included.
- ▶ Participating Hospital Emergency Departments (EDs) report to EDSSS through the automated daily transfer of anonymised data to PHE, for analysis and interpretation by the PHE Real-time Syndromic Surveillance Team (ReSST).
- ▶ Several EDSSS contributing departments are now using the new RCEM Unified Diagnostic Dataset (UDDA) to record diagnoses. Where UDDA is in place the ICD-10 or Snomed CT code is extracted for EDSSS reporting.
- ▶ The syndromic indicators presented in this bulletin are based on the WHO recommendations for syndromes to be used for mass gatherings. Each code system has been mapped to the syndromes described:

Level 1: Broad, generic indicator, available using all ED coding systems reported.

Level 2: More specific indicator, available from EDs using ICD-10 and Snomed CT.

Level 3: Very specific indicator, available from EDs using ICD-10 and Snomed CT.

Respiratory: All respiratory diseases and conditions (infectious and non infectious).

Acute Respiratory Infections (ARI): All acute infectious respiratory diseases.

Asthma/Wheeze/Difficulty Breathing: As indicated by title, including dyspnoea & stridor.

Bronchitis/ Bronchiolitis: As indicated by title (excluding 'chronic').

Influenza-like Illness (ILI): As indicated by title.

Pneumonia: As indicated by title.

Cardiac: All cardiac conditions (including 'chest pain').

Myocardial Ischaemia: All Ischaemic heart disease.

Gastrointestinal: All gastrointestinal diseases and conditions (infectious and non infectious).

Gastroenteritis: All infectious gastrointestinal diseases.

Other (chart only presented when a public health need):

Meningitis: All cause meningitis (exc. meningococcal disease with no mention of meningitis).

Heat/ sunstroke: As indicated by title.

- ▶ Details on diagnosis are not consistently recorded for all ED attendances and the levels of attendances coded vary considerably between each ED.
- ▶ Where the diagnosis codes used in an individual ED cannot be matched to level 2 and 3 syndromic indicators, the ED is excluded from the analysis of those indicators.
- ▶ If you are interested in joining the EDSSS please contact ReSST using the details below.

Acknowledgements:

We are grateful to the clinicians in each ED and other staff within each Trust for their help and continued involvement in the EDSSS.

We thank L2S2 Ltd for undertaking the daily extraction and transfer of anonymised attendance data from all participating EDs.

We thank EMIS Health for facilitating data extraction at the relevant EDSSS sites.

Emergency Department Syndromic Surveillance System Bulletin.

Produced by: PHE Real-time Syndromic Surveillance Team

6th Floor, 5 St Philip's Place, Birmingham, B3 2PW

Tel: 0344 225 3560 > Option 4 > Option 2

Fax: 0121 236 2215

Web: <https://www.gov.uk/government/collections/syndromic-surveillance-systems-and-analyses> 10

Contact ReSST:
syndromic.surveillance
@phe.gov.uk