



Ministry
of Defence



[REDACTED] LLB(Hons)
DE&S Secretariat (Land Equipment)

DESSEC-PolSecLE-JSC-WPNS@mod.uk

Defence Equipment & Support
Maple 0a # 2043
MOD Abbey Wood
Bristol BS34 8JH



Via:
[REDACTED]

17th May 2017 Our Ref: FOI2017/05241

Dear [REDACTED]

Thank you for your letter of 3rd May 2017 requesting the following information:

I have just purchased an ex-military Sankey trailer based cooking outfit which was designated by the MoD as: 'Cooking Outfit No4 Mk2, Trailer Mounted'.

Do you still hold any information on this piece of equipment? I am looking for the following two documents if possible.

*7360-J-100-201 Operating Information, and
7360-J-100-711 Illustrated Parts Catalogue.*

Any information would gratefully received and would be for personal use as described. Electronic copies of any available information would be preferable mainly due to previous printed documents you have supplied not surviving Royal Mail handling unscathed.

I am treating your correspondence as a request for information under the Freedom of Information Act 2000 (FOIA).

A search for the information has now been completed within the Ministry of Defence (MOD), and I can confirm that information in scope of your request is held and is attached to this letter.

If you are not satisfied with this response or you wish to complain about any aspect of the handling of your request, then you should contact me in the first instance. If informal resolution is not possible and you are still dissatisfied then you may apply for an independent internal review by contacting the Information Rights Compliance team, Ground Floor, MOD Main Building, Whitehall, SW1A 2HB (e-mail CIO-FOI-IR@mod.uk). Please note that any request for an internal review must be made within 40 working days of the date on which the attempt to reach informal resolution has come to an end.

If you remain dissatisfied following an internal review, you may take your complaint to the Information Commissioner under the provisions of Section 50 of the Freedom of Information Act. Please note that the Information Commissioner will not investigate your case until the MOD internal review process has been completed. Further details of the role and powers of the Information Commissioner can be found on the Commissioner's website, <http://www.ico.org.uk>.

Yours sincerely,

[REDACTED]
[REDACTED]
DES SEC Pol Sec Land Equipment



~~FOR OFFICIAL USE ONLY~~
~~CROWN COPYRIGHT RESERVED~~

CONDITIONS OF RELEASE

- 1 ~~This information is released by the UK Government for Defence purposes only.~~
- 2 ~~This information must be afforded the same degree of protection as that afforded to information of an equivalent security marking originated by the recipient Government or as required by the recipient Government's security regulations.~~
- 3 ~~This information may be disclosed only within the Defence Department of the recipient Government, except as otherwise authorized by the Ministry of Defence (Army).~~
- 4 This information may be subject to privately owned rights.

COOKING OUTFIT No. 4 Mk 2 TRAILER MOUNTED

ILLUSTRATED PARTS CATALOGUES

BY COMMAND OF THE DEFENCE COUNCIL

Kevin Trewin

Ministry of Defence
Issued by
**DEFENCE LOGISTICS ORGANISATION
ENGINEER SYSTEMS SUPPORT**

AMENDMENT RECORD

Amdt No.	Incorporated by (Signature)	Date
1		
2		
3		
4		
5		
6		
7		
8		
9		
10		
11		
12		
13		
14		
15		
16		
17		
18		
19		
20		
21		
22		
23		
24		
25		
26		
27		
28		
29		
30		
31		

Amdt No.	Incorporated by (Signature)	Date
32		
33		
34		
35		
36		
37		
38		
39		
40		
41		
42		
43		
44		
45		
46		
47		
48		
49		
50		
51		
52		
53		
54		
55		
56		
57		
58		
59		
60		
61		
62		

CONTENTS

PRELIMINARY MATERIAL

	Page
Front Cover	(i)/(ii)
AMENDMENT RECORD	(iii)/(iv)
CONTENTS (this list)	(v)
PREFACE	(vi)
Introduction	(vi)
Hazardous materials	(vi)
Quantities	(vi)
Demands	(vi)
Annotations	(vii)
Abbreviations	(vii)
Amendments	(viii)
Modification records	(viii)
Indentations	(viii)
Related and associated publications	(ix)
Related publications	(ix)
Associated publications	(x)
Equipment identity	(x)
WARNINGS	(x)
Introduction	(x)
COMMENT(S) ON AESP	Final leaf

ILLUSTRATED PARTS LIST INFORMATION

Chapter

- 1 Index of main assemblies and sub-assemblies
- 2 Parts list - Cooking outfit No. 4 Mk 2 trailer mounted
- 3 Indexes
- 3-1 Index of NATO stock numbers to chapter, figure and item numbers
- 3-2 Index of manufacturer's part/drawing numbers to chapter, figure and item number
- 3-3 Not issued
- 3-4 Not issued

PREFACE

Sponsor: DEC CSS
Publication Authority: DLO Caversfield

INTRODUCTION

1 Service users should forward any comments on this publication through the channels prescribed in Army Equipment Support Publication (AESP) 0100-011-013. An AESP Form 10 is provided at the end of this publication; it should be photocopied and used for forwarding comments on this AESP.

2 The subject matter of this publication may be affected by Defence Council Instructions (DCIs), Standing Operating Procedures (SOPs) or by local regulations. When any such Instruction, Order or Regulation contradicts any portion of this publication it is to be taken as the overriding authority.

3 This Illustrated Parts Catalogue (IPC) is designed as an aid to the identification of component parts or assemblies of parts of the equipment, and to provide the information necessary for demanding spares. This IPC should not be used as a dismantling, maintenance, repair, storage, transportation or operation guide.

4 This IPC may list some or all of the parts comprising the equipment concerned, but only those parts given a NATO Stock Number, Service Catalogue or Reference Number will normally be available as spares. Should there be a requirement for an item not assigned a number, demands may be submitted quoting the IPC number (Royal Navy), AP Number (Royal Air Force) or AESP (Army), Item Number, Figure Reference and Item Name. Where a manufacturer's number is known this should be quoted.

Hazardous material

5 This catalogue may list some items which are hazardous materials within the terms of the HSW Act (1974) and current COSHH Regulations. Refer to Safety Data Information published in JSP(F)395, Material Regulations for the Army Volume 9 Pamphlet No. 1 or AP100B-10.

6 This catalogue is a guide to the selection and ordering of spare parts. It should not be used as a maintenance manual as no specific to component safety warnings are included in the catalogue.

Quantities

7 The figure in the 'Number off' column specifies the quantity required for the unit (or assembly, sub-assembly, etc) concerned; it does not indicate the quantity to be demanded.

Demands

8 When demanding Spare Parts the following particulars must be quoted:

- 8.1 Domestic Management Code (DMC).
- 8.2 NATO Stock Number (NSN).
- 8.3 Item Name.
- 8.4 Names of equipment for which the part is required.
- 8.5 Manufacturer's reference, if known.

NOTE

Alternatives quoted apply only to the equipment covered by this IPC.

Annotations

9 The following notations are used in this publication:

9.1 NI - When appearing with a number in the 'FIG ITEM' column indicates that the item is not illustrated.

9.2 NFD - When appearing in the 'ANNOTATION' column indicates that the part number/drawing number for the item is no fully descriptive.

9.3 NP - When appearing in the 'NATO STOCK NUMBER' column indicates that the item though illustrated is not available from stock as a replacement item, ie it is a non-provisioned item.

9.4 (M0795) - When such a code appears in the 'ANNOTATION (NSCM)' column it will identify the manufacturer of any non-provision (NP) item(s). (An index of NSCMS) is provided in Chap 3-4 as applicable.

Abbreviations

10 The following abbreviations are used throughout this IPC.

a/f across floats

BSP British Standard Pipe Thread
BSP F British Standard Pipe, Fastening Thread

Cd Cadmium
contd continued
csk countersunk
Cu Copper
c/w complete with

dia diameter
galv galvanised

h height (high)
hd head
hex hexagon (al)

id inside diameter
in. inch

lg length (long)
LH Left Hand

max maximum
mm millimetre

No. Number

o/a over-all
od outside diameter

RH Right Hand

thd thread (ed)
thk thickness

w width

Zn Zinc

Amendments

11 Amendments to the IPC will be published as and when necessary. They will be numbered consecutively, and the AMENDMENT RECORD SHEET is to be completed for each Amendment Instruction Sheet embodied.

12 New or amended material will be highlighted by sidelining to show the extent of the amendment.

Modification records

13 Modification numbers indicating sub-chapter details applicable to the IPC are listed on the 'RECORD OF MODIFICATION' page in Chap 2. Further detail is then identified on the 'RECORD OF MODIFICATION' page of the appropriate level sub-chapter.

Indentations

14 Items are listed in a logical assembly/disassembly order and are indented by the 'Dot System' in which each 'dot' depicts the relationship of the item to the next higher assembly:

MAIN ASSEMBLY

Attaching parts for main assembly

. FIRST LEVEL OF BREAKDOWN (Sub-assembly or detailed part of main assembly)

. Attaching parts for first level

. . SECOND LEVEL OF BREAKDOWN (Sub-sub-assembly or detailed part of Sub-assembly)

. . Attaching parts for second level

. . . THIRD LEVEL OF BREAKDOWN (Sub-sub-sub-assembly or detailed part of Sub-sub-assembly)

. . . Attaching parts for third level

NOTES

(1) Attaching parts for the Main Assembly are listed at the end of the text of the Main Assembly.

(2) NATO Stock Numbers (NSNs) quoted in this IPC will supersede any number that may have been allotted previously.

RELATED AND ASSOCIATED PUBLICATIONS

Related publications

15 The Octad for the subject equipment consists of all the categories detailed below. All references are prefixed with the first eight digits of this publication. The availability of the publications can be checked by reference to the relevant Group Index (refer to AESP 0100-A-001-013).

16 This publication has been produced in hard copy only.

Category/Sub-category			Information Level			
			1 User/ Operator	2 Unit Maintenance	3 Field Maintenance	4 Base Maintenance
1	0	Purpose and Planning Information	101	101	101	*
	1	Equipment Support Policy Directive	*	*	*	*
2	0	Operating Information	201	201	201	*
	1	Aide Memoire	*	*	*	*
	2	Training Aids	*	*	*	*
3		Technical Description	201	201	201	*
4	1	Installation Instructions	*	*	*	*
	2	Preparation for Special Environments	*	*	*	*
5	1	Failure Diagnosis	201	201	201	*
	2	Maintenance Instructions	201	201	201	*
	3	Inspection Standards	*	*	*	*
	4	Calibration Procedures	*	*	*	*
6		Maintenance Schedules	601	601	601	*
7	1	Illustrated Parts Catalogues	711	711	711	*
	2	Commercial Parts Lists	*	*	*	*
	3	Complete Equipment Schedule, Production	*	*	*	*
	4	Complete Equipment Schedule, Service Edition (Simple Equipment)	741	*	*	*
	5	Complete Equipment Schedule, Service Edition (Complex Equipment)	*	*	*	*
8	1	Modification Instructions	811	811	811	*
	2	General Instructions, Special Technical Instructions and Servicing Instructions	821	821	821	*
	3	Service Engineered Modification Instructions (RAF only)	*	*	*	*

* Category/sub-category not published

Associated publications

17 The following associated publications should be read in conjunction with this equipment:

<u>Reference</u>	<u>Title</u>
JSP 319	Joint Service Safety Regulations for the Storage and Handling of Liquefied Petroleum Gas (LPG)

EQUIPMENT IDENTITY

18 This publication covers the following:

18.1	Contract number:	SL23A0301
18.2	Equipment title:	Cooking Outfit No. 4 Mk 2 Trailer Mounted
18.3	NATO stock number:	J2/7360-99-130-5642
18.4	Asset code:	56222-4300

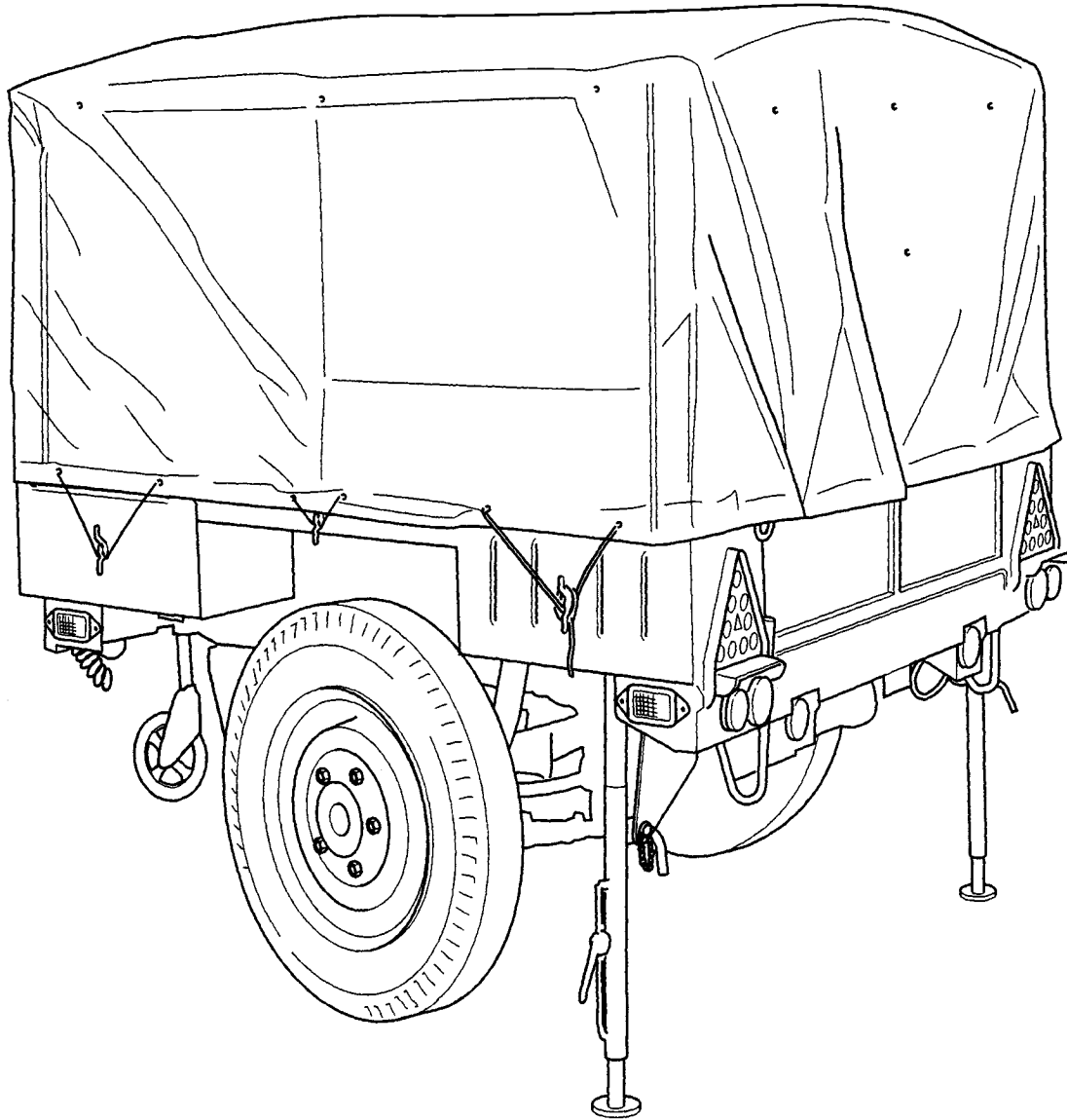
WARNINGS**INTRODUCTION**

19 Before using any hazardous substances of material, make sure that you know the safety and first aid instructions:

- 19.1 On the label of the container it was supplied in.
- 19.2 On the Material Safety Data Sheet.
- 19.3 In local Safety Orders and Regulations.

CHAPTER 1
GENERAL INFORMATION
CONTENTS

	Page
Frontispiece	2
Family tree	3/4
Index of illustrations to chapter and figure numbers	5/6



Cooking outfit No. 4 Mk 2 trailer mounted

**FAMILY TREE
(PUBLICATION/CHAPTER PLAN)**

COOKING OUTFIT
No. 4 Mk 2
TRAILER MOUNTED
7360-99-130-5642

1

Fig 1 Family tree (chapter plan)

**INDEX OF ILLUSTRATIONS
TO
CHAPTER AND FIGURE NUMBERS**

Item	Chapter	Figure
Burner and controls.....	2	2
Cabinet.....	2	1
Fuel system.....	2	3

CHAPTER 2
COOKING OUTFIT No. 4 Mk 2 TRAILER MOUNTED
CONTENTS

	Page
Record of modifications	3

**RECORD OF MODIFICATIONS
INCORPORATED IN THE COMPLETE EQUIPMENT**

Mod Number	Amdt Number	Sub-chapter(s) affected

Mod Number	Amdt Number	Sub-chapter(s) affected

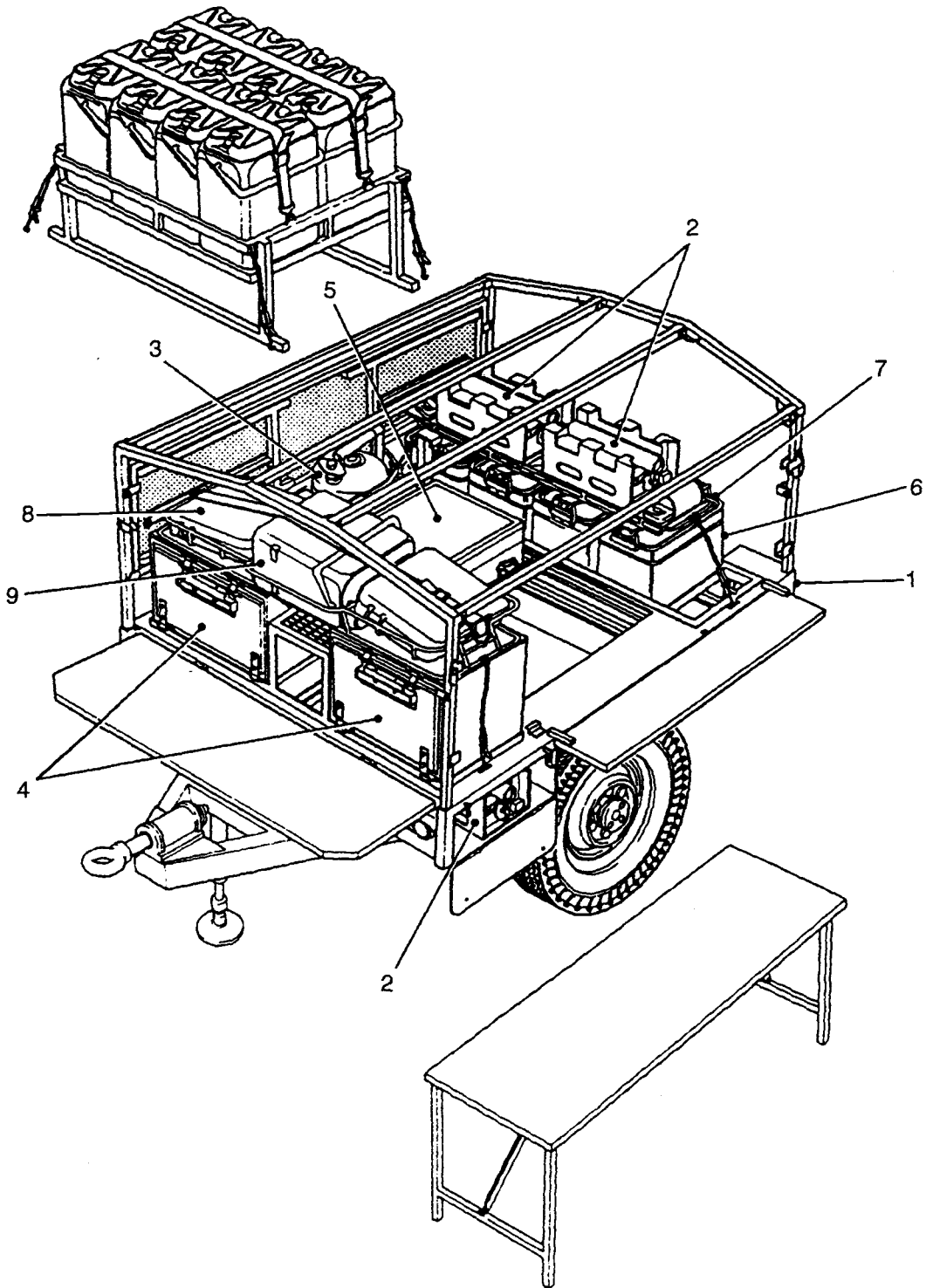


Fig 1 Cooking outfit No. 4 Mk 2 (trailer mounted)

PARTS LIST

Fig 1 Item	DMC Army	NATO stock number	Item name	Part No./ Dwg No.	No. Off	Annotation (NSCM)
1	J2	7360-99-130-5642	. COOKING OUTFIT No. 4 Mk 2 - TRAILER MOUNTED	A017000	REF	See L930/3
	J2	7360-99-130-5615	. BODY AND ANCILLARY ASSEMBLY	A017009	1	See L930/4 L930/5 L930/6 L930/7
2	J2	7360-99-132-3576	. BURNER, REMOTE, FIELD COOKING OUTFIT	D4418	8	See L930/8 L930/5
3	J2	7360-99-132-3587	. TANK, FUEL, REMOTE, FIELD COOKING OUTFIT	D/4782	2	See L930/10
4	J2	7360-99-139-1505	. OVEN, FIELD COOKING OUTFIT	A1/4750	2	See L930/11
5	J2	7360-99-132-3572	. BOX, METAL, KITCHEN, FIELD COOKING OUTFIT	C4910	1	
6	J2	7330-99-125-1821	. POT COOKING	CIS 6996	6	
7	J2	7330-99-125-1822	. COVER COOKING POT	CIS 699C-2	6	
8	J2	7330-99-788-9891	. PAN, BAKING AND ROASTING	B2655	2	
9	J2	7330-99-130-5338	. FOOD CONTAINER, INSULATED		9	
NI 10	J2	8120-99-130-1520	. ADAPTOR, COMPRESSED GAS CYLINDER	A3345	1	Ancillary equipment
NI 11	J2	7330-99-125-1823	. ANTI-SPLASH PLATE, COOKING POT	CIS 699C	6	
NI 12	J2	4720-99-977-7482	. HOSE ASSEMBLY, RUBBER	A1/6286	8	

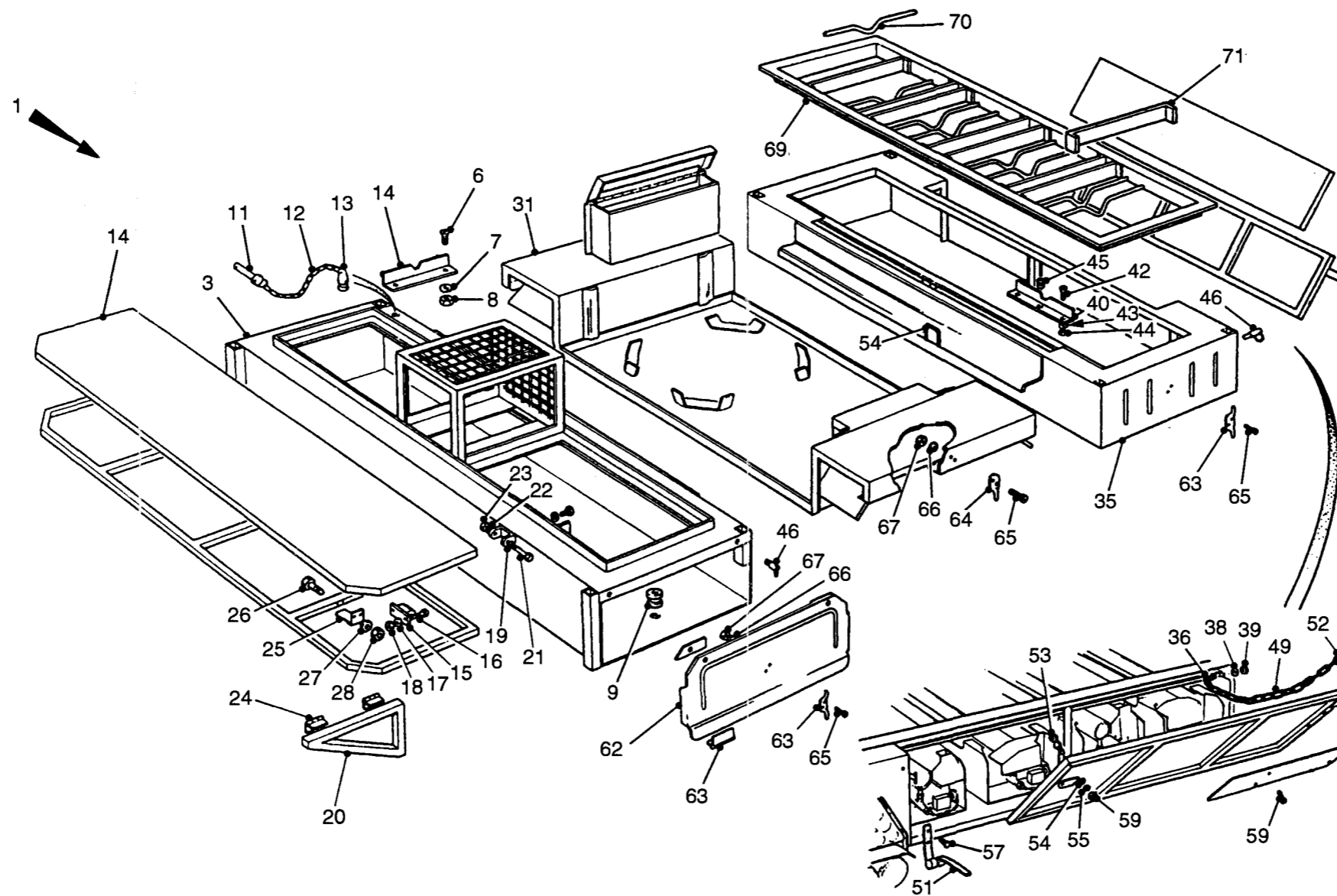


Fig 2 Body and ancillaries

PARTS LIST

Fig 2 Item	DMC Army	NATO stock number	Item name	Part No./ Dwg No.	No. Off	Annotation (NSCM)
			FIELD COOKING OUTFIT No. 4 Mk 2 - TRAILER MOUNTED - Contd.			
1	J2	7360-99-130-5615	. BODY AND ANCILLARY ASSEMBLY	A0/7009	1	
NI 2		NP	.. BODY AND PIPE LINE ASSEMBLY	A0/7001	1	
3		NP	... BODY, FRONT SECTION	A0/7007	1	
4		NP BRACKET ASSEMBLY	A4/7053	1	
NI 5	G2	9505-99-965-0567 WIRE		2	
6	G1	5305-99-135-0508 SCREW, MACHINE		4	
7	G1	5310-99-122-8065 WASHER, FLAT		4	
8	G1	5310-99-135-0778 NUT, PLAIN, HEXAGON		4	
9	J2	5325-99-788-3711 BUSH	A4/7109	1	
NI 10	G1	5320-99-137-7997 RIVET	A4/7109	1	
11	J2	5315-99-788-3710 PIN, SHEAR	Ref F48/7/515	1	Aeroflex
12	J2	4010-99-461-4514 CHAIN		A/R	Cut to 12 links lg
13		NP RIVET	Tucker Taplo 648S	1	
14	J2	7360-99-130-5623	... TABLE ASSEMBLY, FRONT	A0/7062	1	
15	J2	7360-99-781-6870 HINGE BLOCK	A3/7067	2	
16	G1	5305-99-135-0513 SCREW, MACHINE		4	
17	G1	5310-99-135-2548 WASHER, SPRING TENSION		4	
18	G1	5310-99-135-0787 NUT, PLAIN, HEXAGON		4	
19	J2	7360-99-781-6869 HINGE BLOCK	A3/7066	2	
20	J2	7360-99-781-6868 BRACKET SUPPORT	A1/7065	2	
21	G1	5306-99-122-8154 BOLT, MACHINE		2	
22	G1	5310-99-135-2549 WASHER, SPRING TENSION		2	
23	G1	5310-99-138-6908 NUT, PLAIN, HEXAGON		2	
24	J2	7360-99-788-8394 PIANO HINGE	Ross Courtney 380453	4	
25	J2	7360-99-781-6893 CLIP, SPRING	A4/7079	2	
26	G1	5305-99-135-0433 SCREW, MACHINE		4	
27	G1	5310-99-122-8064 WASHER, FLAT		4	
28	G1	5310-99-138-8425 NUT, SELF-LOCKING, HEXAGON		4	
NI 29	G1	5310-99-122-3411	... WASHER, FLAT		4	
NI 30	G1	5310-99-977-3212	... NUT, SELF-LOCKING, HEXAGON		4	
31		NP	... BODY, CENTRE SECTION	A0/7005	1	
NI 32	G1	5305-99-122-3353	... SCREW, MACHINE		8	
NI 33	G1	5310-99-781-6891	... WASHER, FLAT	A4/7108	16	
NI 34	G1	5310-99-138-4490	... NUT, SELF-LOCKING, HEXAGON		8	
35		NP	... BODY, REAR SECTION	A0/7002	1	

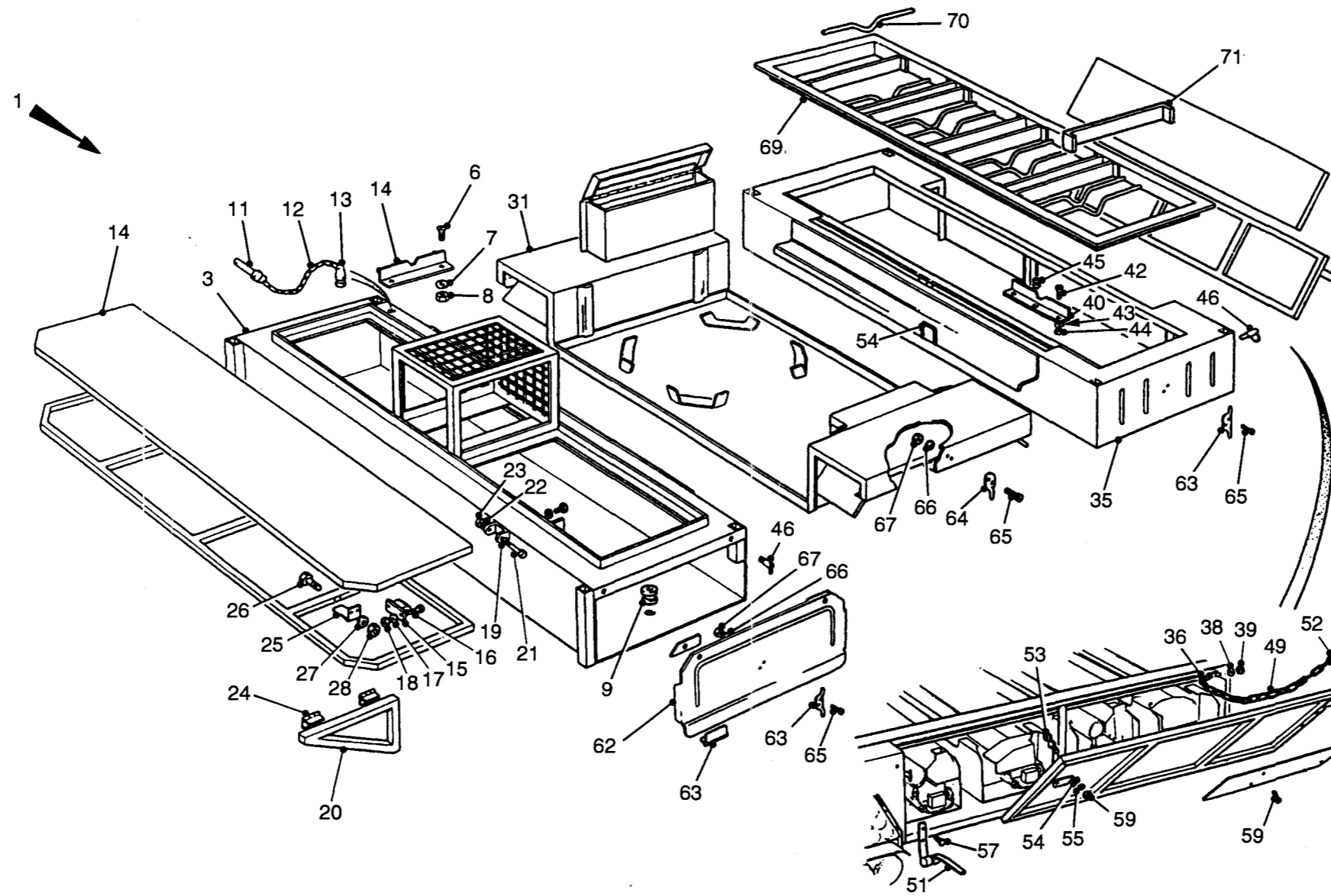


Fig 2 Body and ancillaries

PARTS LIST

Fig 2 Item	DMC Army	NATO stock number	Item name	Part No./ Dwg No.	No. Off	Annotation (NSCM)
			FIELD COOKING OUTFIT No. 4 Mk 2 - TRAILER MOUNTED - Contd.			
			. BODY AND ANCILLARY ASSEMBLY - Contd.			
			.. BODY AND PIPE LINE ASSEMBLY - Contd.			
			... BODY, REAR SECTION - Contd.			
36	J2	5306-99-790-3475 EYEBOLT	A4/7051	2	
NI 37	G1	5310-99-122-3411 WASHER, FLAT		2	
38	G1	5310-99-135-2548 WASHER, SPRING TENSION		2	
39	G1	5310-99-135-0787 NUT, PLAIN, HEXAGON		2	
40	J2	7360-99-781-6871 ASSEMBLY BRACKET	A4/7053	4	
NI 41	G2	9505-99-965-0567 WIRE		2	
42	G1	5305-99-135-0508 SCREW, MACHINE		8	
43	G1	5310-99-135-2548 WASHER, SPRING TENSION		8	
44	G1	5310-99-135-0787 NUT, PLAIN, HEXAGON		8	
45	J2	5325-99-788-3711 BUSH	A4/7109	4	
46	J2	5340-99-785-2085 FASTENER QUICK RELEASE	A4/7133	2	
NI 47	J2	5315-99-789-3779 PIN, STRAIGHT, HEADLESS		2	
NI 48	J2	5315-99-789-4901 PIN, STRAIGHT, HEADLESS		2	
49	G1	4010-99-127-6153 CHAIN, WELDED		A/R	Cut to 20 links lg
NI 50		NP	... TAILGATE ASSEMBLY	A1/7039	1	
51	J2	2360-99-781-6872 HINGE	A4/7040	2	
52	J2	2360-99-781-6873 PIGTAIL	A4/7131	1	
53	J2	2360-99-781-6874 PIGTAIL	A4/7132	1	
54	G1	5310-99-122-3411 WASHER, FLAT		2	
55	G1	5310-99-135-2548 WASHER, SPRING TENSION		2	
56	G1	5310-99-122-3401 NUT, PLAIN, HEXAGON			
NI 57	J2	7360-99-781-6875 PIN, HINGE	A4/7042	1	
NI 58	J2	7360-99-789-0979 PIN, HINGE	A4/7041	1	
59	G1	5305-99-122-8757 SCREW, MACHINE		4	
NI 60	G1	5310-99-122-3412 WASHER, FLAT		4	
NI 61	G1	5310-99-138-1490 NUT, SELF-LOCKING, HEXAGON		4	
62		NP	... DOOR AND HINGE ASSEMBLY	A2/7036	1	
63	J2	7360-99-788-9436	... PIANO HINGE	Ross Courtney 380334	2	
63	G1	5340-99-198-6940	... CLEAT, ROPE, CI		9	
64	G1	5340-99-198-6936	... CLEAT, ROPE, CI		2	

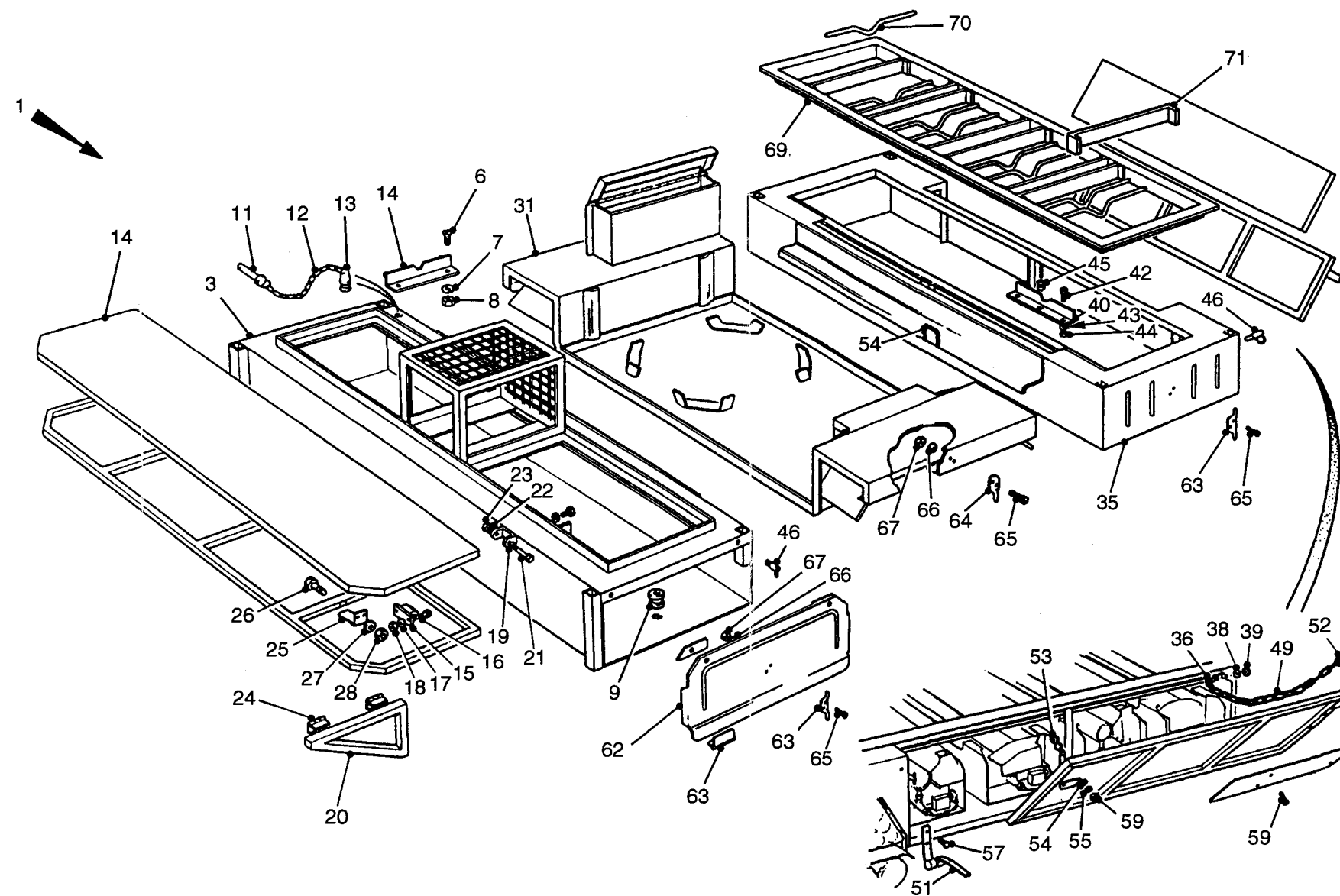


Fig 2 Body and ancillaries

PARTS LIST

Fig 2 Item	DMC Army	NATO stock number	Item name	Part No./ Dwg No.	No. Off	Annotation (NSCM)
			FIELD COOKING OUTFIT No. 4 Mk 2 - TRAILER MOUNTED - Contd.			
			. BODY AND ANCILLARY ASSEMBLY - Contd.			
			.. BODY AND PIPE LINE ASSEMBLY - Contd.			
			... BODY, REAR SECTION - Contd.			
65	G1	5305-99-135-0028	... SCREW, MACHINE		18	
66	G1	5310-99-122-3411	... WASHER, FLAT		18	
67	G1	5310-99-977-3212	... NUT, SELF-LOCKING, HEXAGON		18	
68	J2	7360-99-781-6890	... HASP, OPEN	A4/7107	2	
69	J2	7360-99-130-5648	... GRILL, RANGE ASSEMBLY	A1/7047	1	
70	J2	7360-99-781-6877 SUPPORT, ROUND	A3/7049	12	
71	J2	7360-99-781-6878 STRIP, LOCATING	A3/7050	8	

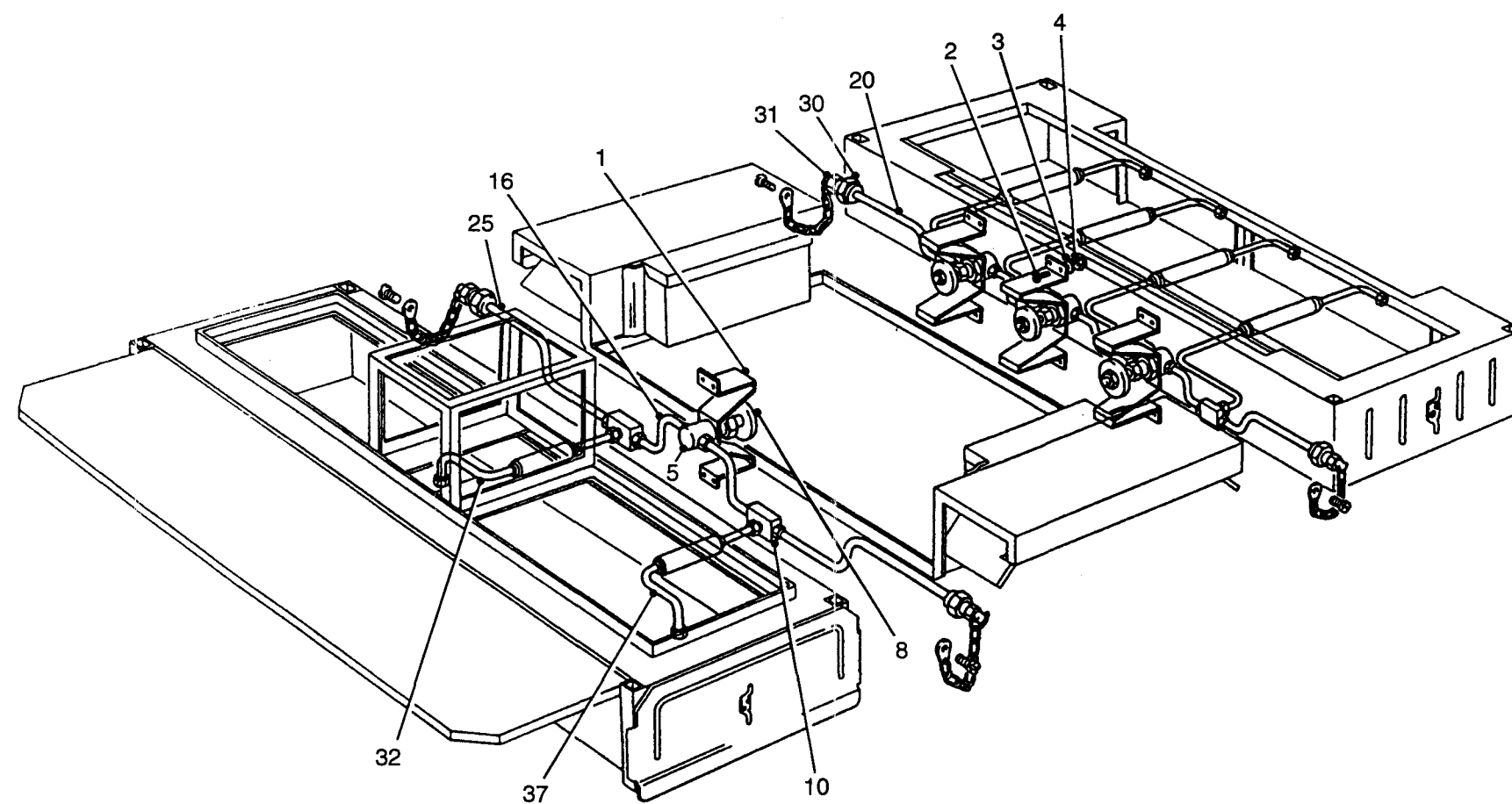


Fig 3 Body and ancillaries

PARTS LIST

Fig 3 Item	DMC Army	NATO stock number	Item name	Part No./ Dwg No.	No. Off	Annotation (NSCM)
			FIELD COOKING OUTFIT No. 4 Mk 2 - TRAILER MOUNTED - Contd.			
			. BODY AND ANCILLARY ASSEMBLY - Contd.			
			.. BODY AND PIPE LINE ASSEMBLY - Contd.			
1		NP	... BRACKET VALVE MOUNTING	A3/7088	4	
2	G1	5305-99-135-0602	... SCREW, MACHINE		16	
3	G1	5310-99-122-3409	... WASHER, FLAT		16	
4	G1	5310-99-138-8425	... NUT, SELF-LOCKING, HEXAGON		16	
5	J2	4820-99-780-0801	... VALVE	A3/7092	4	
NI 6	LV6MT1	5330-99-811-0873 RING, SEALING, TOROIDAL		1	
NI 7	LV6MT1	5330-99-618-0915 RING, SEALING, TOROIDAL		1	
8	J2	7360-99-789-1509 KNOB		1	
NI 9	G1	5310-99-432-7094 WASHER, FLAT		1	
10	J2	4730-99-781-6887	... MANIFOLD, FUEL FEEDER	A3/7089	6	
NI 11	J2	4730-99-781-6888 MANIFOLD, BLOCK	A3/7090	1	
NI 12	J2	4730-99-781-6889 UNION ADAPTOR	A3/7091	3	
NI 13	G1	5305-99-135-0608	... SCREW, MACHINE		12	
NI 14	G1	5310-99-122-3409	... WASHER, FLAT		12	
NI 15	G1	5310-99-138-8425	... NUT, SELF-LOCKING, HEXAGON		12	
16	J2	4710-99-781-6885	... PIPE	A3/7084	8	
NI 17	J2	4710-99-781-6886 PIPE, BENT, METALLIC	A3/7085	1	
NI 18	J2	4730-99-789-1505 NUT, UNION, PIPE		2	
NI 19	J2	4730-99-788-4317 TUBE, NIPPLE		2	
20	J2	4710-99-781-6883	... PIPE	A2/7082	2	
NI 21	J2	4710-99-781-6884 PIPE, BENT, METALLIC	A3/7083	1	
NI 22	J2	4730-99-781-6881 INVERTED NUT, UNION, PIPE	A4/7086	1	
NI 23	J2	4730-99-789-1505 NUT, UNION, PIPE		1	
NI 24	J2	4730-99-788-4317 TUBE, NIPPLE		1	
25	J2	4710-99-781-6879	... PIPE	A2/7080	2	
NI 26	J2	4710-99-790-5235 PIPE, BENT, METALLIC	A2/7081	1	
NI 27	J2	4730-99-781-6881 INVERTED NUT, UNION, PIPE	A4/7086	1	
NI 28	J2	4730-99-789-1505 NUT, UNION, PIPE		1	
NI 29	J2	4730-99-788-4317 TUBE, NIPPLE		1	
30	J2	5310-99-781-6882	... NUT, PLAIN, HEXAGON	A4/7087	4	
31	J2	4730-99-130-5650	... CAP, PIPE	A4/7093	4	
32	J2	4710-99-563-4998	... PIPE AND HOSE ASSEMBLY	A1/9274	1	
NI 33	J2	4720-99-788-9435 HOSE ASSEMBLY, METAL	GAB 20967	A/R	
NI 34	J2	7360-99-781-6876 FERRULE	A4/7105	2	
NI 35	J2	4730-99-789-1505 NUT, UNION, PIPE		2	
NI 36	J2	4730-99-788-4317 TUBE, NIPPLE		2	

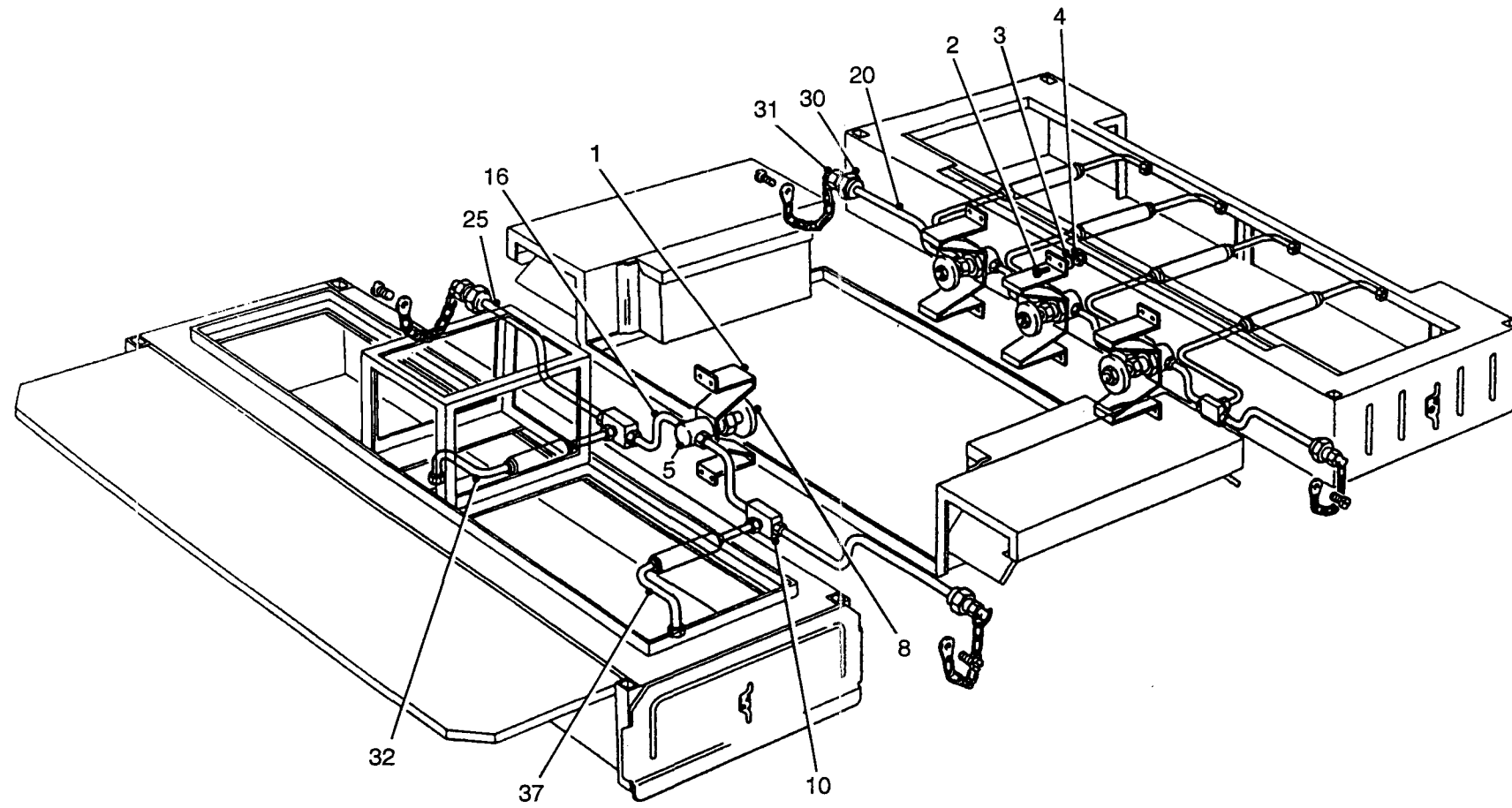


Fig 3 Body and ancillaries

PARTS LIST

Fig 3 Item	DMC Army	NATO stock number	Item name	Part No./ Dwg No.	No. Off	Annotation (NSCM)
			FIELD COOKING OUTFIT No. 4 Mk 2 - TRAILER MOUNTED - Contd.			
			. BODY AND ANCILLARY ASSEMBLY - Contd.			
			.. BODY AND PIPE LINE ASSEMBLY - Contd.			
37	J2	4710-99-899-5028	... PIPE AND HOSE ASSEMBLY	A1/9273	1	
NI 38	J2	4720-99-788-9435 HOSE ASSEMBLY, METAL	GAB 20967	A/R	
NI 39	J2	7360-99-781-6876 FERRULE	A4/7105	2	
NI 40	J2	4730-99-789-1505 NUT, UNION, PIPE		2	
NI 41	J2	4730-99-788-4317 TUBE, NIPPLE		2	
NI 42	J2	7360-99-130-5643	... PIPE AND HOSE ASSEMBLY	A2/7095	4	
43	J2	4720-99-788-9435 HOSE ASSEMBLY METAL	GAB 20967		
NI 44	J2	7360-99-781-6876 FERRULE	A4/7105	2	
NI 45	J2	4730-99-789-1505 NUT, UNION, PIPE		2	
NI 46	J2	4730-99-788-4317 TUBE, NIPPLE		2	

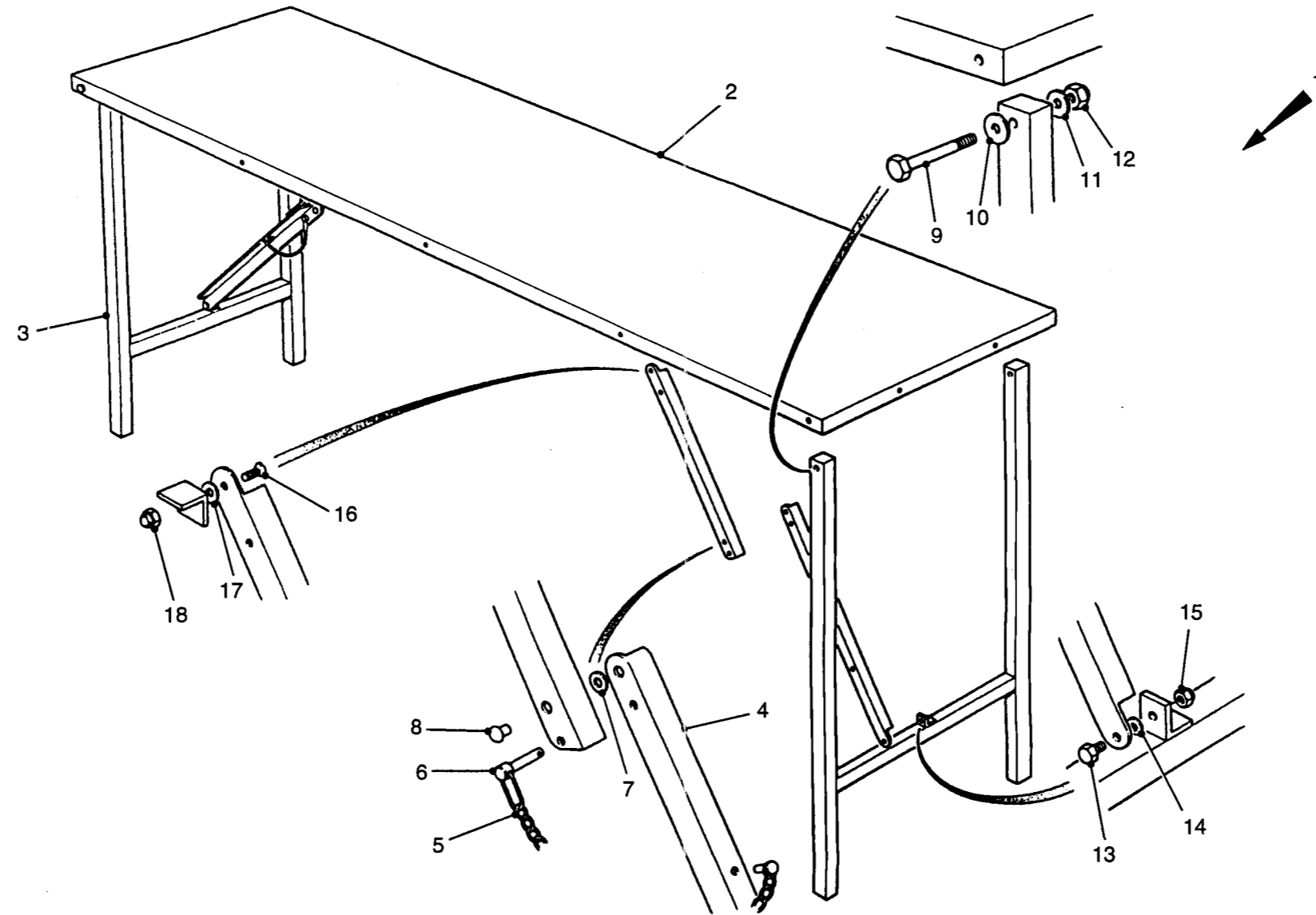


Fig 4 Table assembly

PARTS LIST

Fig 4 Item	DMC Army	NATO stock number	Item name	Part No./ Dwg No.	No. Off	Annotation (NSCM)
1			FIELD COOKING OUTFIT No. 4 Mk 2 - TRAILER MOUNTED - Contd. . BODY AND ANCILLARY ASSEMBLY - Contd.			
2	J2	7360-99-130-5615	.. TABLE ASSEMBLY	A1/7072	2	
3	J2	7360-99-781-6892	... LEG, TABLE	A1/7075	2	
4	J2	7360-99-788-4316	... STAY ASSEMBLY	A1/7149	2	
5	G1	4010-99-461-4514 CHAIN		A/R	Cut to 20 links lg
6	J2	5340-99-789-8370 PIN, QUICK RELEASE	Aeroflex F48/7/410	1	
7	G1	5310-99-122-8065 WASHER, FLAT		1	
8	G1	5320-99-137-7917 RIVET, SOLID		1	
9	G1	5306-99-122-8153	... BOLT, MACHINE		4	
10	J2	5310-99-789-1506	... WASHER, FLAT		4	
11	G1	5310-99-122-8066	... WASHER, FLAT		4	
12	G1	5310-99-138-1490 NUT, SELF-LOCKING, HEXAGON		4	
13	G1	5305-99-122-8749	... SCREW, MACHINE		2	
14	G1	5310-99-122-8065 WASHER, FLAT		2	
15	G1	5310-99-977-3212	... NUT, SELF-LOCKING		2	
16	G1	5305-99-135-0510	... SCREW, MACHINE		2	
17	G1	5310-99-122-8065	... WASHER, FLAT		2	
18	G1	5310-99-977-3212	... NUT, SELF-LOCKING		2	

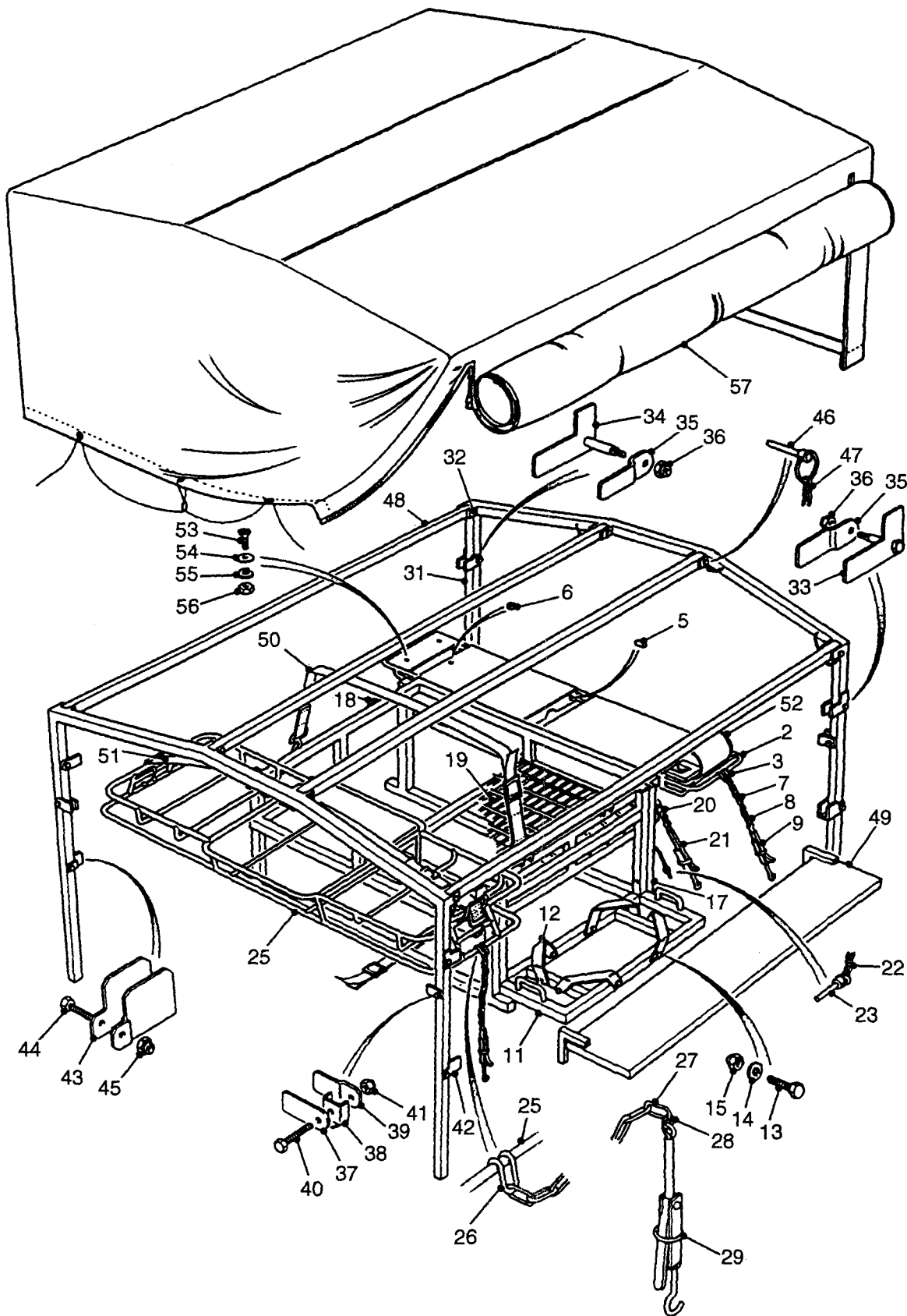


Fig 5 Frames

PARTS LIST

Fig 5 Item	DMC Army	NATO stock number	Item name	Part No./ Dwg No.	No. Off	Annotation (NSCM)
			FIELD COOKING OUTFIT No. 4 Mk 2 - TRAILER MOUNTED - Contd.			
			. BODY AND ANCILLARY ASSEMBLY - Contd.			
NI 1	J2	7360-99-130-5618	.. BASKET ASSEMBLY, REAR	A0/7056	1	
2		NP	... FRAME REAR	A1/7057	1	
3	J2	7360-99-781-6896	... HOOK	A4/7061	2	
NI 4	J2	7360-99-781-6895	... BURNER PLATE ASSEMBLY	A2/7058	2	
5	G2	9505-99-965-0567 PIN		2	
6	J2	5325-99-788-3711 BUSH	A4/7109	2	
7	G1	4010-99-127-6152	... CHAIN, WELDED		A/R	Cut to 5 links lg
8	J2	5340-99-789-0980	... RING		4	
9	J2	7360-99-781-6894	... CATCH, TOGGLE LEVER	A2/4579	2	
NI 10	J2	7360-99-130-5649	.. SUPPORT FRAME ASSEMBLY	A0/7123	2	
11		NP	... FRAME, CRADLE	A0/7124	1	
12		NP	... BRACKET	A2/7125	4	
13	G1	5306-99-122-3363	... BOLT, MACHINE		8	
14	G1	5310-99-122-8065	... WASHER, FLAT		8	
15	G1	5310-99-977-3212	... NUT, SELF-LOCKING, HEXAGON		8	
NI 16	J2	7360-99-130-5619	.. FRAME ASSEMBLY	A1/7044	1	
17		NP	... FRAME, CRADLE	A1/7045	1	
18	J2	7360-99-781-6897	... CLIP	A4/7071	8	
19	J2	5335-99-789-1508	... WIRE FABRIC		1	
20	G1	4010-99-127-6152	... CHAIN, WELDED		A/R	Cut to 3 links lg
21	J2	7360-99-781-6894	... CATCH, TOGGLE LEVER	A2/4579	4	
22	G1	4010-99-461-4514	... CHAIN		A/R	Cut to 8 links lg
23	J2	5315-99-789-1507	... DROP PIN	MK 505	4	
NI 24	J2	7360-99-130-5617	.. BASKET ASSEMBLY	A0/7054	1	
25	J2	NP	... FRAME, FRONT	A0/7055	1	
26	J2	7360-99-781-6896	... HOOK	A0/7061	2	
27	G1	4010-99-127-6152	... CHAIN, WELDED		A/R	Cut to 9 links lg
28	J2	5340-99-789-0980	... RING		4	
29	J2	7360-99-781-6894	... CHAIN, TOGGLE LEVER	A2/4579	2	
NI 30	J2	7360-99-130-5620	.. FRAME ASSEMBLY	A0/7068	2	
31		NP	... END FRAME	A0/7069	1	
32		NP	... BRACKET	A4/7078	4	
33	J2	7360-99-781-6898	... BOLT AND PLATE ASSEMBLY, LH	A4/7114	1	
34	J2	7360-99-781-6901	... BOLT AND PLATE ASSEMBLY, RH	A4/7119	1	

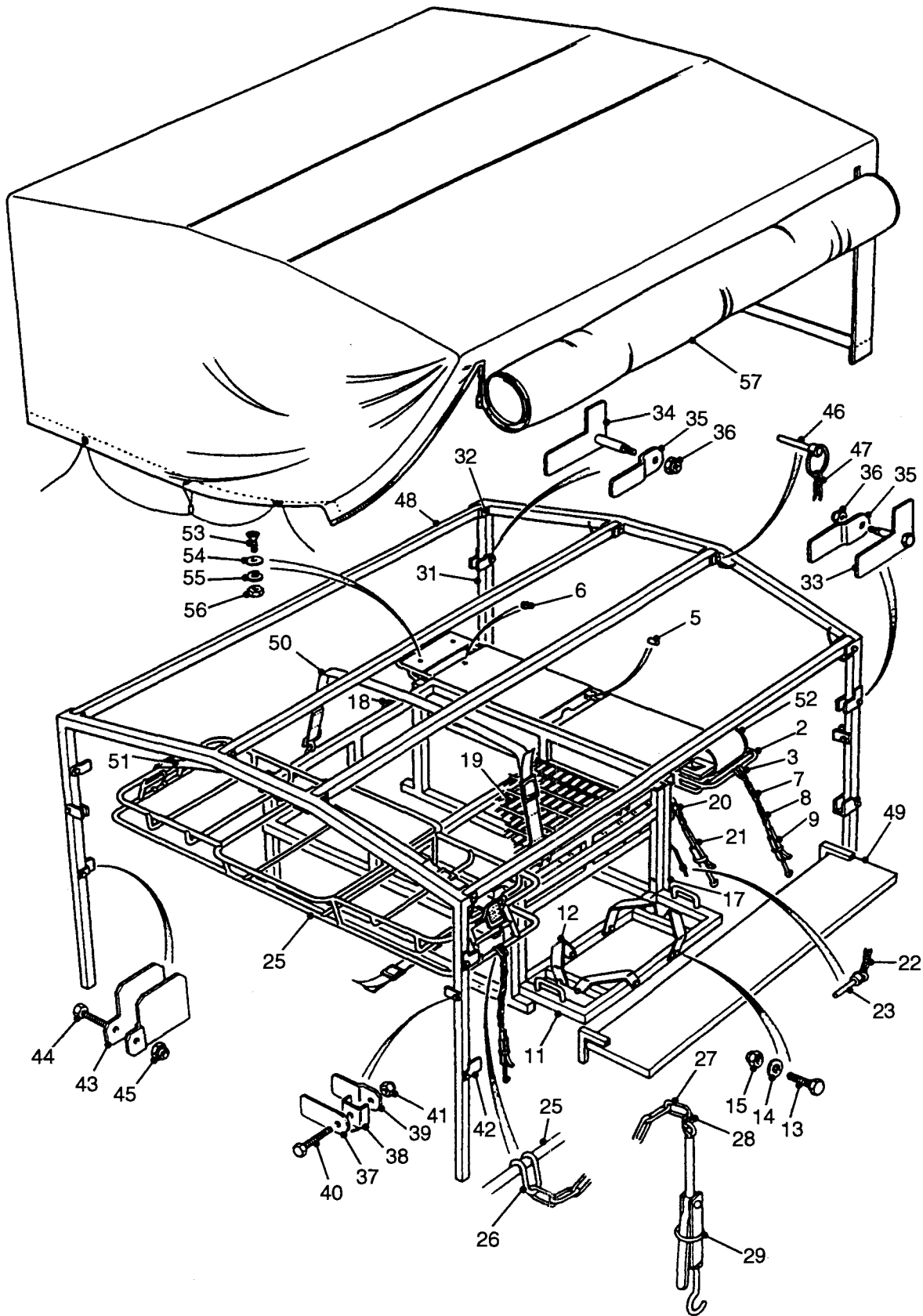


Fig 5 Frames

PARTS LIST

Fig 5 Item	DMC Army	NATO stock number	Item name	Part No./ Dwg No.	No. Off	Annotation (NSCM)
			FIELD COOKING OUTFIT No. 4 Mk 2 - TRAILER MOUNTED - Contd.			
			. BODY AND ANCILLARY ASSEMBLY - Contd.			
			.. FRAME ASSEMBLY - Contd.			
35	J2	7360-99-781-6899	... TOGGLE PLATE	A4/7117	2	
36	G1	5310-99-977-3212	... NUT, SELF-LOCKING, HEXAGON		2	
37	J2	7360-99-781-6900	... TOGGLE	A4/7112	2	
38		NP	... BRACKET STOP	A4/7111	2	
39		NP	... PLATE	A4/7113	2	
40	G1	5306-99-124-3597	... BOLT, MACHINE		2	
41	G1	5310-99-977-3212	... NUT, SELF-LOCKING, HEXAGON			
42		NP	... SUPPORT, LH	A3/7118	1	
43		NP	... SUPPORT, RH	A3/7120	1	
44	G1	5306-99-122-3365	... BOLT, MACHINE		2	
45	G1	5310-99-977-3212	... NUT, SELF-LOCKING, HEXAGON		2	
46	J2	5315-99-788-3710	... PIN, SHEAR	F48/7/515	8	
47	G1	4010-99-461-4514	... CHAIN		A/R	Cut to 18 links lg
48	J2	7360-99-130-5621	.. CROSS MEMBER	A3/7070	4	
49	J2	7360-99-130-5622	.. TABLE ASSEMBLY	A1/7134	1	
50	J2	7360-99-130-5646	.. STRAP, SECURING	A1/7144	3	
51	J2	7360-99-130-5647	.. STRAP, WEBBING	A3/7145	1	
52	KG	4210-99-139-8099	... EXTINGUISHER, FIRE, VAPORISING LIQUID		2	CES Item
53	G1	5305-99-135-0508	.. SCREW, MACHINE		4	
54	G1	5310-99-122-3411	.. WASHER, FLAT		4	
55	G1	5310-99-135-2548	.. WASHER, SPRING TENSION		4	
56	G1	5310-99-977-3564	.. NUT, PLAIN, HEXAGON			
57	J2	7360-99-139-1504	.. CANOPY, FIELD COOKING OUTFIT	A0/5016	1	

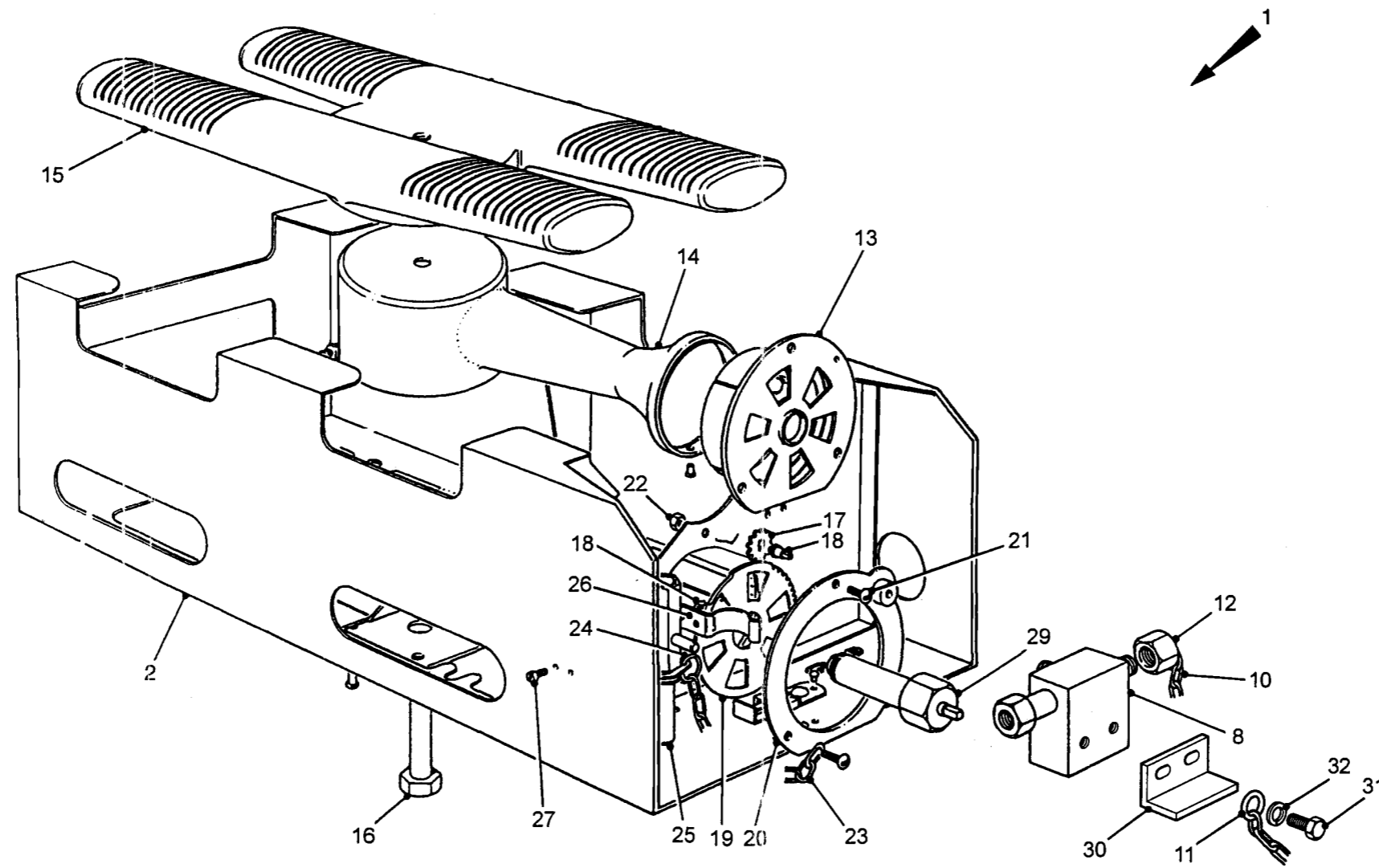


Fig 6 Burner

PARTS LIST

Fig 6 Item	DMC Army	NATO stock number	Item name	Part No./ Dwg No.	No. Off	Annotation (NSCM)
			FIELD COOKING OUTFIT No. 4 Mk 2 - TRAILER MOUNTED - Contd.			
1	J2	7360-99-132-3576	. BURNER, REMOTE, FIELD COOKING OUTFIT	D4418	8	
2		NP	.. FRAME ASSEMBLY	D4419	1	
NI 3	J2	7360-99-781-6854	... BRACKET	B4423	2	
NI 4	J2	7360-99-781-6855	... PLATE	A4/9864	1	
NI 5	G1	5320-99-137-7954	... RIVET, SOLID		4	
NI 6	J2	5325-99-539-4561	... SLIDE, LATCH	DZUS LS100A	1	
NI 7		NP	... RIVET, SOLID		2	
8	J2	7310-99-779-5696	.. TRANSFER BLOCK ASSEMBLY	B4450	1	
9	G1	5305-99-135-0022	.. SCREW, MACHINE		2	
10	G1	4010-99-120-6734	.. CHAIN, WELDED		A/R	Cut to 15 links lg
11	G1	5340-99-120-7681	.. RING, CONNECTING, ROUND		2	
12	J2	7360-99-139-3883	.. BLANK PLUG	A4493	1	
13	J2	7360-99-779-8004	.. TUBE ASSEMBLY	B4426	1	
14	J2	7360-99-977-1011	.. CHAMBER, MIXING	C4433	1	
15	21C	7360-99-977-1010	.. BURNER PLATE, CI	D4432	1	
16	G1	5306-99-124-3613	.. BOLT, MACHINE		1	
17	J2	7360-99-139-3881	.. GEAR	A4448	1	
18	J2	7360-99-139-3882	.. SPINDLE	A4434	1	
19	J2	7360-99-977-1012	.. AIR SHUTTER	A4447	1	
20	J2	7360-99-780-2964	.. FRONT PLATE ASSEMBLY	B4429		
21	G1	5305-99-122-3346	.. SCREW, MACHINE		3	
22	G1	5310-99-122-3399	.. NUT, PLAIN, HEXAGON		3	
23	G1	4010-99-120-6734	.. CHAIN, WELDED		A/R	Cut to 15 links lg
24	G1	5340-99-120-7681	.. RING, CONNECTING, ROUND		1	
25	J2	7360-99-139-3885	.. TOOL, UNIVERSAL	B4466	1	
26	J2	7360-99-781-6862	.. CLIP, SPRING	A4497	1	
27	G1	5305-99-135-0589	.. SCREW, MACHINE		2	
28	G1	5310-99-122-3397	.. NUT, PLAIN, HEXAGON		2	
29	J2	7360-99-132-3578	.. VALVE ASSEMBLY, CONTROL	B4476	1	
30		NP	. BRACKET, TRANSFER BLOCK	A4/9241	1	
31		NP	. SCREW, MACHINE, M5 X 12	BS 3692/8.8 PLATED TO BS 3382	2	
32		NP	. WASHER, LOCK, M5	BS 4320 FORM A	2	
					1	
					1	

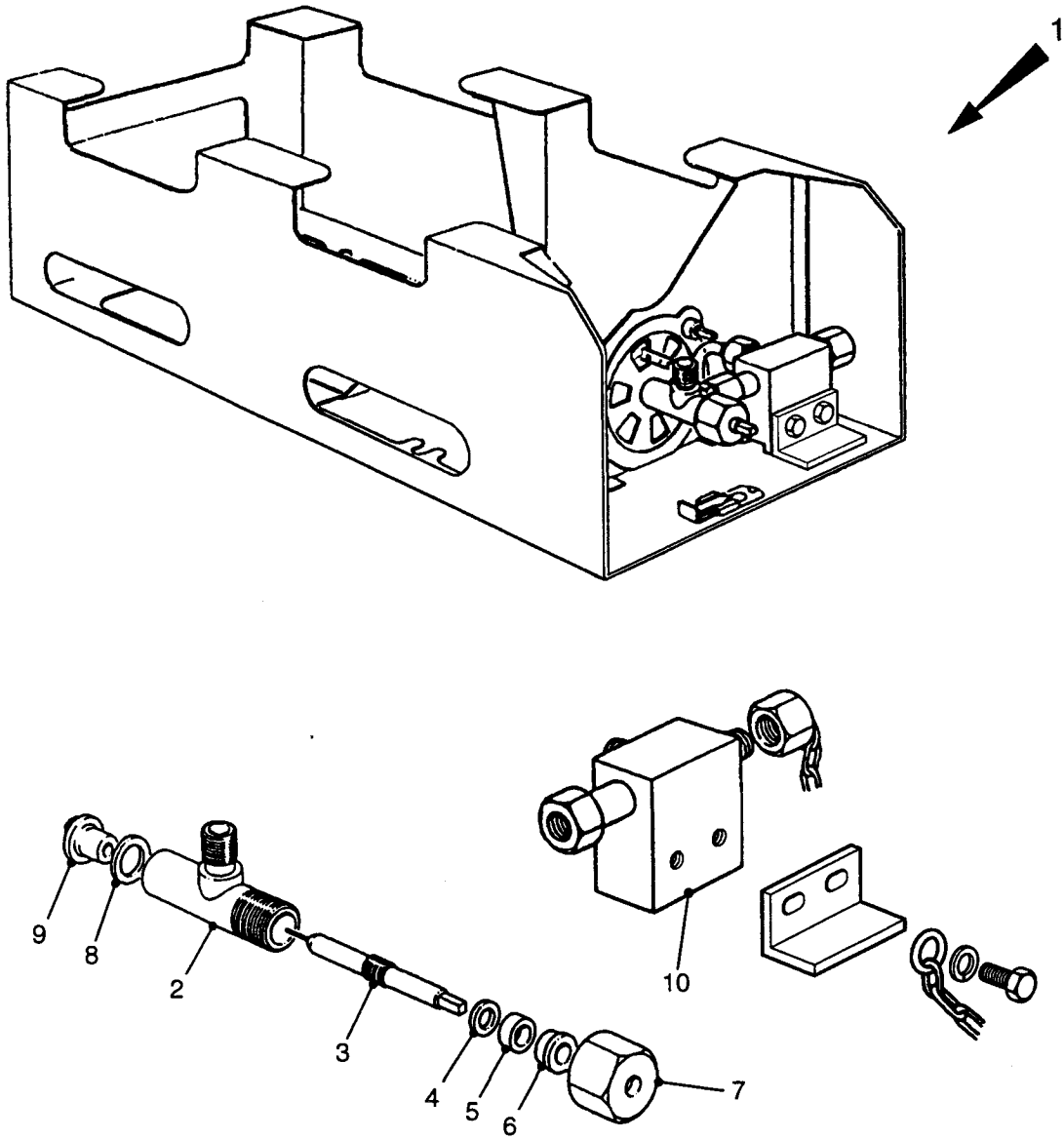


Fig 7 Valve transfer block and pipe assembly

PARTS LIST

Fig 7 Item	DMC Army	NATO stock number	Item name	Part No./ Dwg No.	No. Off	Annotation (NSCM)
1	J2	7360-99-132-3578	FIELD COOKING OUTFIT No. 4 Mk 2 - TRAILER MOUNTED - Contd. VALVE ASSEMBLY, CONTROL	B4476	REF	PART OF BURNER REMOTE FIELD COOKING OUTFIT
2	21C	7360-99-977-1016	. BODY AND UNION ASSEMBLY	B4477	1	
3	J2	7360-99-779-7997	. SPINDLE VALVE	B4480	1	
4	J2	7360-99-977-1015	. WASHER	A4483	1	
5	J2	5330-99-125-1775	. PACKING MATERIAL		1	
6	J2	7360-99-977-1014	. COLLAR	A4484	1	
7	J2	4730-99-977-1013	. NUT, UNION, PIPE	A4485	1	
8	J2	7360-99-977-1017	. WASHER, PLAIN		1	
9	J2	7360-99-977-1018	. JET	A4482	1	
10	J2	7310-99-779-5696	. TRANSFER BLOCK ASSEMBLY	B4450	REF	PART OF BURNER REMOTE FIELD COOKING OUTFIT
NI 11	J2	7310-99-779-5695	. PIPE, FUEL ASSEMBLY	C4443	REF	PART OF BURNER REMOTE FIELD COOKING OUTFIT

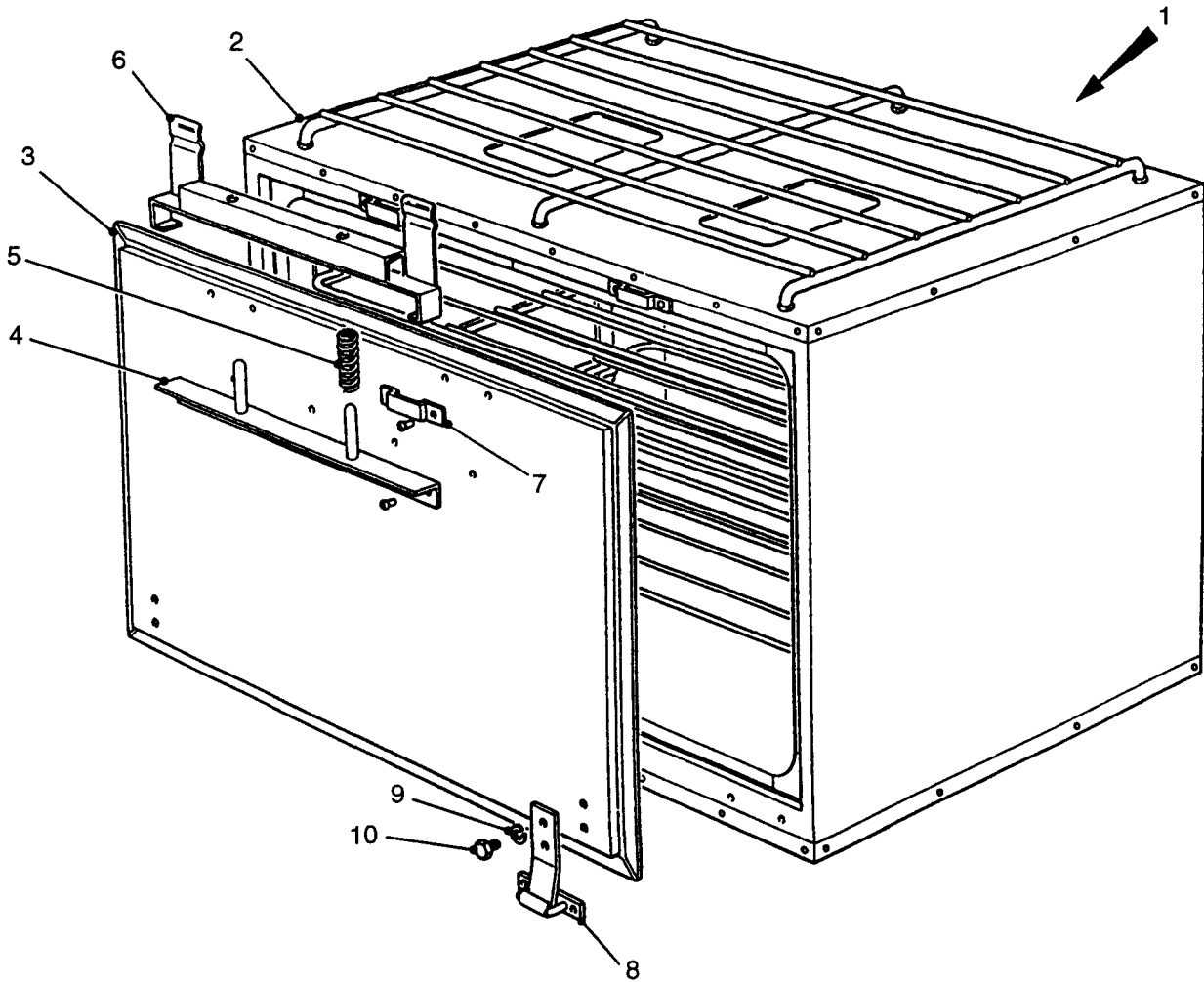


Fig 8 Oven

PARTS LIST

Fig 8 Item	DMC Army	NATO stock number	Item name	Part No./ Dwg No.	No. Off	Annotation (NSCM)
			FIELD COOKING OUTFIT, No. 4, Mk 2 - TRAILER MOUNTED			
1	J2	7360-99-139-1505	. OVEN FIELD COOKING OUTFIT	A1/4750	1	
2		NP	.. CABINET ASSEMBLY	A0/4751	1	
		NP	.. DOOR ASSEMBLY	A0/4763	1	
3	J2	7360-99-781-6903	... DOOR	A0/4764	1	
4	J2	7360-99-781-6904	... ANCHOR PLATE ASSEMBLY	A2/4765	1	
5	J2	5360-99-781-6905	... SPRING, HELICAL, COMPRESSION	A4/4769	2	
6	J2	7360-99-781-6906	... PLATE, COMPRESSION	A1/4770	1	
7	J2	7360-99-781-6907	... GUIDE PLATE	A4/4762	2	
8	J2	7360-99-781-6908	... HINGE	A4/4771	2	
9	G1	5310-99-138-8379	... WASHER, LOCK		4	
10	G1	5305-99-122-8748	... SCREW, MACHINE		4	

CHAPTER 3

INDEXES

CONTENTS

Para

- 1 Introduction

Chapter

- 3-1 Index of NATO stock numbers to chapter, figure and item numbers
- 3-2 Index of manufacturer's part/drawing numbers to chapter, figure and item numbers
- 3-3 Not issued
- 3-4 Not issued

INTRODUCTION

- 1 This chapter identifies the number of indexes provided in support to the main Parts List.

CHAPTER 3-1
INDEX OF NATO STOCK NUMBERS
TO
CHAPTER, FIGURE AND ITEM NUMBERS
CONTENTS

	Page
Index pages	3

INDEX OF NATO STOCK NUMBERS
TO
CHAPTER, FIGURE AND ITEM NUMBERS

NATO Stock Number	Chapter	Fig & Item
4010-99-120-6734	2	6-10
	2	6-23
5340-99-120-7681	2	6-11
	2	6-24
5305-99-122-3346	2	6-21
5305-99-122-3353	2	2-NI 32
5306-99-122-3363	2	5-13
5306-99-122-3365	2	5-44
5310-99-122-3397	2	6-28
5310-99-122-3399	2	6-22
5310-99-122-3401	2	2-56
5310-99-122-3409	2	3-3
	2	3-NI 14
5310-99-122-3411	2	2-NI 29
	2	2-NI 37
	2	2-54
	2	2-66
	2	5-54
5310-99-122-3412	2	2-NI 60
5310-99-122-8064	2	2-27
5310-99-122-8065	2	2-7
5310-99-122-8065	2	4-7
	2	4-14
	2	4-17
	2	5-14
5310-99-122-8066	2	4-11
5306-99-122-8153	2	4-9
5306-99-122-8154	2	2-21
5305-99-122-8748	2	8-10
5305-99-122-8749	2	4-13
5305-99-122-8757	2	2-59
5306-99-124-3597	2	5-40
5306-99-124-3613	2	6-16
5330-99-125-1775	2	7-5
7330-99-125-1821	2	1-6
7330-99-125-1822	2	1-7

NATO Stock Number	Chapter	Fig & Item
7330-99-125-1823	2	1-NI 11
4010-99-127-6152	2	5-7
	2	5-20
	2	5-27
4010-99-127-6153	2	2-49
8120-99-130-1520	2	1-NI 10
7330-99-130-5338	2	1-9
7360-99-130-5615	2	1-1
	2	2-1
	2	4-2
7360-99-130-5617	2	5-NI 24
7360-99-130-5618	2	5-NI 1
7360-99-130-5619	2	5-NI 16
7360-99-130-5620	2	5-NI 30
7360-99-130-5621	2	5-48
7360-99-130-5622	2	5-49
7360-99-130-5623	2	2-14
7360-99-130-5642	2	1-REF
7360-99-130-5643	2	3-NI 42
7360-99-130-5646	2	5-50
7360-99-130-5647	2	5-51
7360-99-130-5648	2	2-69
7360-99-130-5649	2	5-NI 10
4730-99-130-5650	2	3-31
7360-99-132-3572	2	1-5
7360-99-132-3576	2	1-2
	2	6-1
7360-99-132-3578	2	6-29
	2	7-1
7360-99-132-3587	2	1-3
5305-99-135-0022	2	6-9
5305-99-135-0028	2	2-65
5305-99-135-0433	2	2-26
5305-99-135-0508	2	2-6
	2	2-42
	2	5-53

NATO Stock Number	Chapter	Fig & Item
5305-99-135-0510	2	4-16
5305-99-135-0513	2	2-16
5305-99-135-0589	2	6-27
5305-99-135-0602	2	3-2
5305-99-135-0608	2	3-NI 13
5310-99-135-0778	2	2-8
5310-99-135-0787	2	2-18
	2	2-39
	2	2-44
5310-99-135-2548	2	2-17
	2	2-38
	2	2-43
	2	2-55
	2	5-55
5310-99-135-2549	2	2-22
5320-99-137-7917	2	4-8
5320-99-137-7954	2	6-NI 5
5320-99-137-7997	2	2-NI 10
5310-99-138-1490	2	2-NI 34
	2	2-NI 61
	2	4-12
5310-99-138-6908	2	2-23
5310-99-138-8379	2	8-9
5310-99-138-8425	2	2-28
5310-99-138-8425	2	3-4
	2	3-NI 15
7360-99-139-1504	2	5-57
7360-99-139-1505	2	1-4
	2	8-1
7360-99-139-3881	2	6-17
7360-99-139-3882	2	6-18
7360-99-139-3883	2	6-12
7360-99-139-3885	2	6-25
4210-99-139-8099	2	5-52
5340-99-198-6936	2	2-64
5340-99-198-6940	2	2-63
5310-99-432-7094	2	3-NI 9
4010-99-461-4514	2	2-12
	2	4-5
	2	5-22
	2	5-47

NATO Stock Number	Chapter	Fig & Item
5325-99-539-4561	2	6-NI 6
4710-99-563-4998	2	3-32
5330-99-618-0915	2	3-NI 7
7310-99-779-5695	2	7-NI 11
7310-99-779-5696	2	6-8
	2	7-10
7360-99-779-7997	2	7-3
7360-99-779-8004	2	6-13
4820-99-780-0801	2	3-5
7360-99-780-2964	2	6-20
7360-99-781-6854	2	6-NI 3
7360-99-781-6855	2	6-NI 4
7360-99-781-6862	2	6-26
7360-99-781-6868	2	2-20
7360-99-781-6869	2	2-19
7360-99-781-6870	2	2-15
7360-99-781-6871	2	2-40
2360-99-781-6872	2	2-51
2360-99-781-6873	2	2-52
2360-99-781-6874	2	2-53
7360-99-781-6875	2	2-NI 57
7360-99-781-6876	2	3-NI 34
	2	3-NI 39
	2	3-NI 44
7360-99-781-6877	2	2-70
7360-99-781-6878	2	2-71
4710-99-781-6879	2	3-25
4730-99-781-6881	2	3-NI 22
	2	3-NI 27
5310-99-781-6882	2	3-30
4710-99-781-6883	2	3-20
4710-99-781-6884	2	3-NI 21
4710-99-781-6885	2	3-16
4710-99-781-6886	2	3-NI 17
4730-99-781-6887	2	3-10
4730-99-781-6888	2	3-NI 11
4730-99-781-6889	2	3-NI 12
7360-99-781-6890	2	2-68
5310-99-781-6891	2	2-NI 33
7360-99-781-6892	2	4-3
7360-99-781-6893	2	2-25

NATO Stock Number	Chapter	Fig & Item
7360-99-781-6894	2	5-9
	2	5-21
	2	5-29
7360-99-781-6895	2	5-NI 4
7360-99-781-6896	2	5-3
	2	5-26
7360-99-781-6897	2	5-18
7360-99-781-6898	2	5-33
7360-99-781-6899	2	5-35
7360-99-781-6900	2	5-37
7360-99-781-6901	2	5-34
7360-99-781-6903	2	8-3
7360-99-781-6904	2	8-4
5360-99-781-6905	2	8-5
7360-99-781-6906	2	8-6
7360-99-781-6907	2	8-7
7360-99-781-6908	2	8-8
5340-99-785-2085	2	2-46
5315-99-788-3710	2	2-11
	2	5-46
5325-99-788-3711	2	2-9
	2	2-45
	2	5-6
7360-99-788-4316	2	4-4
4730-99-788-4317	2	3-NI 19
	2	3-NI 24
	2	3-NI 29
	2	3-NI 36
	2	3-NI 41
	2	3-NI 46
7360-99-788-8394	2	2-24
4720-99-788-9435	2	3-NI 33
	2	3-NI 38
	2	3-43
7360-99-788-9436	2	2-63
7330-99-788-9891	2	1-8
7360-99-789-0979	2	2-NI 58
5340-99-789-0980	2	5-8
	2	5-28
4730-99-789-1505	2	3-NI 18

NATO Stock Number	Chapter	Fig & Item
	2	3-NI 23
4730-99-789-1505	2	3-NI 28
	2	3-NI 35
	2	3-NI 40
	2	3-NI 45
5310-99-789-1506	2	4-10
5315-99-789-1507	2	5-23
5335-99-789-1508	2	5-19
7360-99-789-1509	2	3-8
5315-99-789-3779	2	2-NI 47
5315-99-789-4901	2	2-NI 48
5340-99-789-8370	2	4-6
5306-99-790-3475	2	2-36
4710-99-790-5235	2	3-NI 26
5330-99-811-0873	2	3-NI 6
4710-99-899-5028	2	3-37
9505-99-965-0567	2	2-NI 5
	2	2-NI 41
	2	5-5
7360-99-977-1010	2	6-15
7360-99-977-1011	2	6-14
7360-99-977-1012	2	6-19
4730-99-977-1013	2	7-7
7360-99-977-1014	2	7-6
7360-99-977-1015	2	7-4
7360-99-977-1016	2	7-2
7360-99-977-1017	2	7-8
7360-99-977-1018	2	7-9
5310-99-977-3212	2	2-NI 30
	2	2-67
	2	4-15
	2	4-18
	2	5-15
	2	5-36
	2	5-41
	2	5-45
5310-99-977-3564	2	5-56
4720-99-977-7482	2	1-NI 12

CHAPTER 3-2
INDEX OF MANUFACTURERS' PART/DRAWING NUMBERS
TO
CHAPTER, FIGURE AND ITEM NUMBERS
CONTENTS

	Page
Index pages	3/4

INDEX OF MANUFACTURERS PART/DRAWING NUMBERS

TO

CHAPTER, FIGURE AND ITEM NUMBERS

Manufacturers' Part or Dwg numbers	Chapter	Fig & item
A0/4751	2	8-2
A0/4763	2	8-
A0/4764	2	8-3
A0/5016	2	5-57
A0/7001	2	2-NI 2
A0/7002	2	2-35
A0/7005	2	2-31
A0/7007	2	2-3
A0/7009	2	2-1
A0/7054	2	5-NI 24
A0/7055	2	5-25
A0/7056	2	5-NI 1
A0/7061	2	5-26
A0/7062	2	2-14
A0/7068	2	5-NI 30
A0/7069	2	5-31
A0/7123	2	5-NI 10
A0/7124	2	5-11
A017000	2	1
A017009	2	1-1
A1/4750	2	1-4
	2	8-1
A1/4770	2	8-6
A1/6286	2	1-NI 12
A1/7039	2	2-NI 50
A1/7044	2	5-NI 16
A1/7045	2	5-17
A1/7047	2	2-69
A1/7057	2	5-2
A1/7065	2	2-20
A1/7072	2	4-2
A1/7075	2	4-3
A1/7134	2	5-49
A1/7144	2	5-50
A1/7149	2	4-4
A1/9273	2	3-37

Manufacturers' Part or Dwg numbers	Chapter	Fig & item
A1/9274	2	3-32
A2/4579	2	5-9
	2	5-21
	2	5-29
A2/4765	2	8-4
A2/7036	2	2-62
A2/7058	2	5-NI 4
A2/7080	2	3-25
A2/7081	2	3-NI 26
A2/7082	2	3-20
A2/7095	2	3-NI 42
A2/7125	2	5-12
A3/7049	2	2-70
A3/7050	2	2-71
A3/7066	2	2-19
A3/7067	2	2-15
A3/7070	2	5-48
A3/7083	2	3-NI 21
A3/7084	2	3-16
A3/7085	2	3-NI 17
A3/7088	2	3-1
A3/7089	2	3-10
A3/7090	2	3-NI 11
A3/7091	2	3-NI 12
A3/7092	2	3-5
A3/7118	2	5-42
A3/7120	2	5-43
A3/7145	2	5-51
A3345	2	1-NI 10
A4/4762	2	8-7
A4/4769	2	8-5
A4/4771	2	8-8
A4/7040	2	2-51
A4/7041	2	2-NI 58
A4/7042	2	2-NI 57
A4/7051	2	2-36

Manufacturers' Part or Dwg numbers	Chapter	Fig & Item
A4/7053	2	2-4
	2	2-40
A4/7061	2	5-3
A4/7071	2	5-18
A4/7078	2	5-32
A4/7079	2	2-25
A4/7086	2	3-NI 22
	2	3-NI 27
A4/7087	2	3-30
A4/7093	2	3-31
A4/7105	2	3-NI 34
A4/7105	2	3-NI 39
	2	3-NI 44
A4/7107	2	2-68
A4/7108	2	2-NI 33
A4/7109	2	2-NI 10
	2	2-45
	2	5-6
A4/7111	2	5-38
A4/7112	2	5-37
A4/7113	2	5-39
A4/7114	2	5-33
A4/7117	2	5-35
A4/7119	2	5-34
A4/7131	2	2-52
A4/7132	2	2-53
A4/7133	2	2-46
A4/9241	2	6-30
A4/9864	2	6-NI 4
A4434	2	6-18
A4447	2	6-19
A4448	2	6-17
A4482	2	7-9
A4483	2	7-4
A4484	2	7-6
A4485	2	7-7
A4493	2	6-12
A4497	2	6-26
Aeroflex F48/7/410	2	4-6
B2655	2	1-8
B4423	2	6-NI 3

Manufacturers' Part or Dwg numbers	Chapter	Fig & Item
B4426	2	6-13
B4429	2	6-20
B4450	2	6-8
	2	7-10
B4466	2	6-25
B4476	2	6-29
	2	7-1
B4477	2	7-2
B4480	2	7-3
BS 3692/8.8 PLATED TO BS 3382	2	6-31
BS 4320 FORM A	2	6-32
C4433	2	6-14
C4443	2	7-NI 11
C4910	2	1-5
CIS 6996	2	1-6
CIS 699C	2	1-NI 11
CIS 699C-2	2	1-7
D/4782	2	1-3
D4418	2	1-2
	2	6-1
D4419	2	6-2
D4432	2	6-15
DZUS LS100A	2	6-NI 6
F48/7/515	2	5-46
GAB 20967	2	3-NI 33
	2	3-NI 38
	2	3-43
MK 505	2	5-23
Ref F48/7/515	2	2-11
Ross Courtney 380334	2	2-63
Ross Courtney 380453	2	2-24
Tucker Taplo 648S	2	2-13

COMMENT(S) ON AESP*

To: DCCS
BFPO 794

From:
.....
.....
.....

Sender's Reference	BIN Number	Date
AESP* Title:		
Chapter(s)/Instruction	Page(s)/Paragraph(s)	
If you require more space, please use the reverse of this form or a separate piece of paper. Comment(s):		

Signed: Telephone No.:
Name (Capitals): Rank/Grade: Date:
X

FOR AESP* SPONSOR USE ONLY

To: From:
.....
.....

Thank you for commenting on AESP*:

Your reference: Dated:

Action is being taken to:	Tick		Tick
Issue a revised/amended AESP*		Under investigation	
Incorporate comment(s) in future amendments		No action required	
Remarks			

Signed: Telephone No.:
Name (Capitals): Rank/Grade: Date:

* AESP or EMER



~~FOR OFFICIAL USE ONLY~~
~~CROWN COPYRIGHT RESERVED~~

CONDITIONS OF RELEASE

- 1 ~~This information is released by the UK Government for Defence purposes only.~~
- 2 ~~This information must be afforded the same degree of protection as that afforded to information of an equivalent security marking originated by the recipient Government or as required by the recipient Government's security regulations.~~
- 3 ~~This information may be disclosed only within the Defence Department of the recipient Government, except as otherwise authorized by the Ministry of Defence (Army).~~
- 4 This information may be subject to privately owned rights.

COOKING OUTFIT No. 4 Mk 2 TRAILER MOUNTED

OPERATING INFORMATION

BY COMMAND OF THE DEFENCE COUNCIL

Kenn Trewin

Ministry of Defence
Issued by
**DEFENCE LOGISTICS ORGANISATION
ENGINEER SYSTEMS SUPPORT**

AMENDMENT RECORD

Amdt No.	Incorporated by (Signature)	Date
1		
2		
3		
4		
5		
6		
7		
8		
9		
10		
11		
12		
13		
14		
15		
16		
17		
18		
19		
20		
21		
22		
23		
24		
25		
26		
27		
28		
29		
30		
31		

Amdt No.	Incorporated by (Signature)	Date
32		
33		
34		
35		
36		
37		
38		
39		
40		
41		
42		
43		
44		
45		
46		
47		
48		
49		
50		
51		
52		
53		
54		
55		
56		
57		
58		
59		
60		
61		
62		

CONTENTS

PRELIMINARY MATERIAL	Page
Front Cover	(i)/(ii)
AMENDMENT RECORD	(iii)/(iv)
CONTENTS (this list).....	(v)
PREFACE	(vi)
Introduction	(vi)
Related and associated publications	(vi)
Related publications	(vi)
Associated publications	(viii)
Warnings.....	(viii)
Caution.....	(ix)/(x)
COMMENT(S) ON AESP	Final leaf

OPERATING INFORMATION

Chapter

- 1 General description
- 2 Operating instructions
- 3 Maintenance instructions
- 4 Fault diagnosis

PREFACE

Sponsor: DEC CSS
Publication Authority: DLO Caversfield

INTRODUCTION

1 Service users should forward any comments concerning this Publication through the channels prescribed in Army Equipment Support Publication (AESP) 0100-P-011-013. An AESP Form 10 is provided at the end of this publication; it should be photocopied and used for forwarding comments on this AESP.

2 AESPs are issued under Defence Council authority and, where AESPs specify action to be taken, the AESP will of itself be sufficient authority for such action and also for the demanding of the necessary stores, subject to the provisions of Para 3 below.

3 The subject matter of this publication may be affected by Defence Council Instructions (DCIs), Standard Operating Procedures (SOPs) or by local regulations. When any such Instruction, Order or Regulation contradicts any portion of this publication they are to be taken as the overriding authority.

RELATED AND ASSOCIATED PUBLICATIONS**Related publications**

4 The Octad for the subject equipment consists of the categories as detailed opposite. All references are prefixed with the first eight digits of this publication. The availability of the publications can be checked by reference to the relevant Group Index (refer to AESP 0100-A-001-013).

Category/Sub-category			Information Level			
			1 User/ Operator	2 Unit Maintenance	3 Field Maintenance	4 Base Maintenance
1	0	Purpose and Planning Information	101	101	101	*
	1	Equipment Support Policy Directive	*	*	*	*
2	0	Operating Information	201	201	201	*
	1	Aide Memoire	*	*	*	*
	2	Training Aids	*	*	*	*
3		Technical Description	201	201	201	*
4	1	Installation Instructions	*	*	*	*
	2	Preparation for Special Environments	*	*	*	*
5	1	Failure Diagnosis	201	201	201	*
	2	Maintenance Instructions	201	201	201	*
	3	Inspection Standards	*	*	*	*
	4	Calibration Procedures	*	*	*	*
6		Maintenance Schedules	601	601	601	*
7	1	Illustrated Parts Catalogues	711	711	711	*
	2	Commercial Parts Lists	*	*	*	*
	3	Complete Equipment Schedule, Production	*	*	*	*
	4	Complete Equipment Schedule, Service Edition (Simple Equipment)	741	*	*	*
	5	Complete Equipment Schedule, Service Edition (Complex Equipment)	*	*	*	*
8	1	Modification Instructions	811	811	811	*
	2	General Instructions, Special Technical Instructions and Servicing Instructions	821	821	821	*
	3	Service Engineered Modification Instructions (RAF only)	*	*	*	*

* Category/sub-category not published

Associated Publications

5 The following associated publications should be read in conjunction with this publication:

<u>Reference</u>	<u>Title</u>
JSP 319	Joint Service Safety Regulations for the Storage and Handling of Liquefied Petroleum Gas (LPG)
JSP 341	Road Transport Regulations
Army Code 40197	Cooking Equipment Complete Equipment Schedule
Army Code 14510	Servicing Schedule Trailer Cargo 3/4 Tonne 2 Wheeled Wide Tracked
EMER U200/1 Wheeled Vehicles	EMER Trailer Cargo 3/4 Tonne 2 Wheeled Wide Tracked
Army Code 61818	Handbook Trailer Cargo 3/4 Tonne 2 Wheeled Wide Tracked
Army Code 61957	Illustrated Parts Catalogue Trailer Cargo 3/4 Tonne 2 Wheeled Wide Tracked
Army Code 31224	Complete Equipment Schedule

EQUIPMENT IDENTITY

6 This publication covers the following:

6.1	Contract number:	23A0301
6.2	Equipment title:	Cooking Outfit No. 4 Mk 2 Trailer Mounted
6.3	NATO Stock Number:	J2/7360-99-130-5642
6.4	Asset code:	56222-4300

WARNINGS

7 The following WARNINGS are applicable to this equipment.

(1) FUEL POLICY. THE COOKING OUTFIT SHOULD ONLY BE USED WITH LIQUEFIED PETROLEUM GAS (LPG) AS A FUEL. GASOLINE HAS BEEN BANNED. ALSO THE USE OF FILTER GENERATORS (FG) NSN 7360-99-132-3584 HAS BEEN PROHIBITED.

(2) PERSONNEL INJURY. ALWAYS ENSURE GOOD VENTILATION WHEN USING IN ENCLOSED AREAS.

(3) LEAK TESTING. THE COOKING OUTFIT MUST ALWAYS BE TESTED FOR FUEL LEAKS PRIOR TO LIGHTING.

(4) **REMOTE BURNER UNITS.** REMOTE BURNER UNITS ARE NOT TO BE REMOVED FROM THE COOK SET WHILST THE OUTFIT IS IN USE UNLESS THE CORRECT ISOLATION PROCEDURES HAVE BEEN CARRIED OUT. THE OUTFIT MUST BE CORRECTLY SHUT DOWN (ALL RESIDUAL FUEL BURNT OUT AND COOKING FLAMES EXTINGUISHED) PRIOR TO REMOVING BURNERS.

(5) **FIRE EXTINGUISHERS.** ENSURE THAT THE FIRE EXTINGUISHERS ARE READILY ACCESSIBLE.

(6) **EQUIPMENT DESTRUCTION.** DUE CONSIDERATION SHOULD BE GIVEN TO THE HIGHLY FLAMMABLE NATURE OF GASOLINE AND ITS VAPOUR. CARELESSNESS IN ITS USE FOR EQUIPMENT DESTRUCTION MAY RESULT IN PAINFUL BURNS AND EXPLOSIONS.

CAUTION

8 The following CAUTION is applicable to this equipment.

EQUIPMENT DAMAGE. Burner slots must be cleaned with the tools supplied prior to use, prior to storage and after each meal.

CHAPTER 1
GENERAL DESCRIPTION
CONTENTS

Para

1	Introduction
	Cooking outfit equipment
4	Heating units
7	Fire extinguishers
8	Food preparation surfaces
9	Oven
10	Pan, baking and roasting
11	Baking tray
12	Container, cooking
13	Pan, baking and roasting with lid
14	Insulated food container
15	Kitchen utensils
16	Frame stand remote heater
17	Safety instructions for portable LPG cylinders
18	Data
19	Weight
20	Airportability
21	Towing

INTRODUCTION

1 The Cooking Outfit No. 4 Mk 2 is designed to provide a mobile kitchen facility capable of producing meals for up to 150 personnel using fresh or composite rations, or an emergency meal of stew and tea for up to 258 personnel.

2 Sufficient equipment is provisioned to enable baking, roasting, frying and boiling operations to be undertaken simultaneously.

3 The Cooking Outfit is mounted on an in-service 3/4 tonne wide body, two wheeled trailer chassis, (Asset code 2853 0790) with a special Cooking Outfit body, canopy and frame.

COOKING OUTFIT EQUIPMENT

Heating units

4 The heating equipment consists of eight Mk 2 Remote Burner Units. Each remote burner unit has a maximum heat output of 14.5kW (50,000 BTU). Two burner units are mounted at the front of the Cooking Outfit which can be utilised for the ovens. Four are mounted at the rear of the Cooking Outfit. The remaining two, which are supplied as spare or back-up units for use off of the Cooking Outfit, are carried on a frame. The two oven burners and the four rear burner units have isolating valves, one between each burner fuel pipe connection, four in total.

5 The Mk 2 remote burner unit is designed with a split - burner casting. A single control valve regulates the heat output. This control valve carries an automatic jet-cleaning needle, which cleans the jet orifice, when the valve is closed.

6 The Mk 2 remote burner unit is designed to run on Liquefied Petroleum Gas (LPG) which is supplied directly to the burner through armoured hoses from a commercial LPG cylinder. When operating the burners with LPG supplied from other than UK source it may be necessary to use special adaptors. These are either supplied as part of the Complete Equipment Schedule (CES) or through DMC J2

Fire Extinguishers

7 There are two 2.0 Kg dry powder fire extinguishers fitted. These are not to be stored in the ovens during storage or in transit but fitted in correct brackets.

Food preparation surfaces

8 There are two trailer mounted stainless steel food preparation surfaces. One is situated over the drawbar and swings down in front of the ovens. The other is carried on the body of the Cooking Outfit and can be fitted on either side of the trailer body.

Oven

9 Two ovens are mounted at the front of the Cooking Outfit. They are of an air-jacketed construction to reduce weight and heat loss and are manufactured from stainless steel sheet. A rack is provided at the top of each oven which can be used as a hot plate to utilise waste heat. Each oven has three wire shelves adjustable to different positions. Ovens are fitted with handles due to the Safety Requirement for handling hot ovens.

Pan, baking and roasting

10 The baking and roasting pan is a stainless steel pan 508 mm x 254 mm x 50 mm (20 in. x 10 in. x 2 in.) and is used in the ovens. There are six per set.

Baking tray

11 The baking tray is an aluminium tray 400 mm x 335 mm x 13 mm (15.75 in. x 13 in. 0.5 in.). There are two per set.

Container cooking

12 The main cooking pot is a 27 ltr (6 gall) rectangle stainless steel container with splash plate and lid. There are ten per set, four positioned over the rear burners and two carried in the centre body well. Four are carried in the towing vehicle.

Pan, baking and roasting, with lid

13 The baking and roasting pan is of heavy-duty aluminium with lid. The pan body can be used for deep-frying and the lid for shallow frying. It can also be used for pot-roasting, steaming and keeping food warm. There are two per set.

Insulated food container

14 The insulated food container is manufactured from double skinned heavy-duty polythene with an insulating filler of polyurethane foam. It weighs 5.6 kg (12 lb) and has a high thermal efficiency, can be used for insulator cooking and has a capacity of 18 ltr (4 gall). Two 7 ltr (1.5 gall) inserts are included. A tap and vacuum release valve is fitted into the lid; a serving ladle is also carried in a recess in the lid. There are nine per set. Eight of these sit on top of the centre cradle. Prior to mounting into place when loading, it is advisable to attach the webbing straps to the trailer before loading the food containers.

Kitchen utensils

15 A comprehensive selection of kitchen tools is supplied and these are carried in the kitchen box.

Frame stand remote heater

16 The stand is used in conjunction with the spare Mk 2 remote burner unit and 27 ltr (6 gall) containers to provide a free standing water heating / cooking facility. There are two per set. These are to be carried in the towing vehicle, not in the ovens, for hygiene reasons.

SAFETY INSTRUCTIONS FOR PORTABLE LPG CYLINDERS

17 The following safety instructions are applicable to portable LPG (Propane) cylinders.

17.1 The cylinder should always be kept in an upright position.

17.2 The supplied gas regulator must always be fitted, therefore enabling the gas supply to be regulated.

17.3 Never position the LPG cylinder within 2.7 m (10 ft) of the Cooking Outfit.

17.4 Always shut off the LPG at source (cylinder) when not in use.

17.5 If signs of frosting on the cylinder it should be shut off and allowed to defrost before any further use.

17.6 Never store full and empty cylinders in the same location. A gap of 2 m (6 ft) should be maintained between the two.

17.7 Never store cylinders where there is poor ventilation.

17.8 Keep cylinders away from all sources of naked flame or ignition.

DATA

18 The following data is applicable to the Cooking Outfit when it is mounted on its trailer.

Weight

19 The trailer weight is 0.914 tonne (2015 lb) laden. Food must be transported in accordance with the current Food Safety Regulations. Fuel and water are to be transported separate from the trailer.

Airportability

20 The loaded trailer is acceptable for aircraft carriage or as an underslung helicopter load. (Hercules Mk 1 and 3, VC 10 or Chinook Helicopter).

Towing

21 The fully laden trailer can be towed by a laden TUM Landrover or laden/unladen 4 Tonne Truck at 72 km/h (45 mph) on good roads.

21.1 When using a TUM (HS Wolf) Landrover as the towing vehicle the max speed limit on good roads is 40 mph due to increased tow hook heights. The trailer is also to be stencilled with HS WOLF 40 MPH MAX in red letters 60 mm (2.5 in.) high and 10 mm (0.5 in.) wide.

21.2 When towing with 4 Tonne Truck, a drop down plate is to be used to reduce tow hitch height. Details are contained in relevant 4 Tonne Truck installation/modification instructions.

NOTE

The driver is to ensure that the correct voltage rating of bulb is fitted to all of the trailer lights. This is dependent on the towing vehicle. As a general rule, Landrover is 12V and 4 Tonne Truck is 24V, but a physical check must be carried out prior to connecting the trailer NATO socket.

CHAPTER 2
OPERATING INSTRUCTIONS
CONTENTS

Para

- 1 Preparing for use (WARNING)
Setting up (WARNING)
- 11 General (WARNING) (CAUTION)
- 15 Connecting an LPG cylinder
- 16 Pre-lighting leak test (WARNING)
- 20 Lighting instructions
- 21 Regulating burner flame
- 22 Shutting down the burners
- 23 Disconnecting an LPG Cylinder

Fig

Page

1	Equipment on a suitable base	2
2	Canopy removed	3
3	Tables removed.....	4
4	Canopy frame removed.....	5
5	Containers removed	6
6	Baskets removed.....	7
7	Removing remaining equipment.....	8
8	Outfit set up for operation	9

PREPARING FOR USE

1 A full CES check/inspection of all items including fuel hoses and fire extinguishers is to take place prior to use of this equipment.

2 Select a firm level base, lower the jockey wheel and rear support legs so that their base plates contact the ground and the equipment is level and secure as shown in Fig 1. Tighten the base plate clamps.

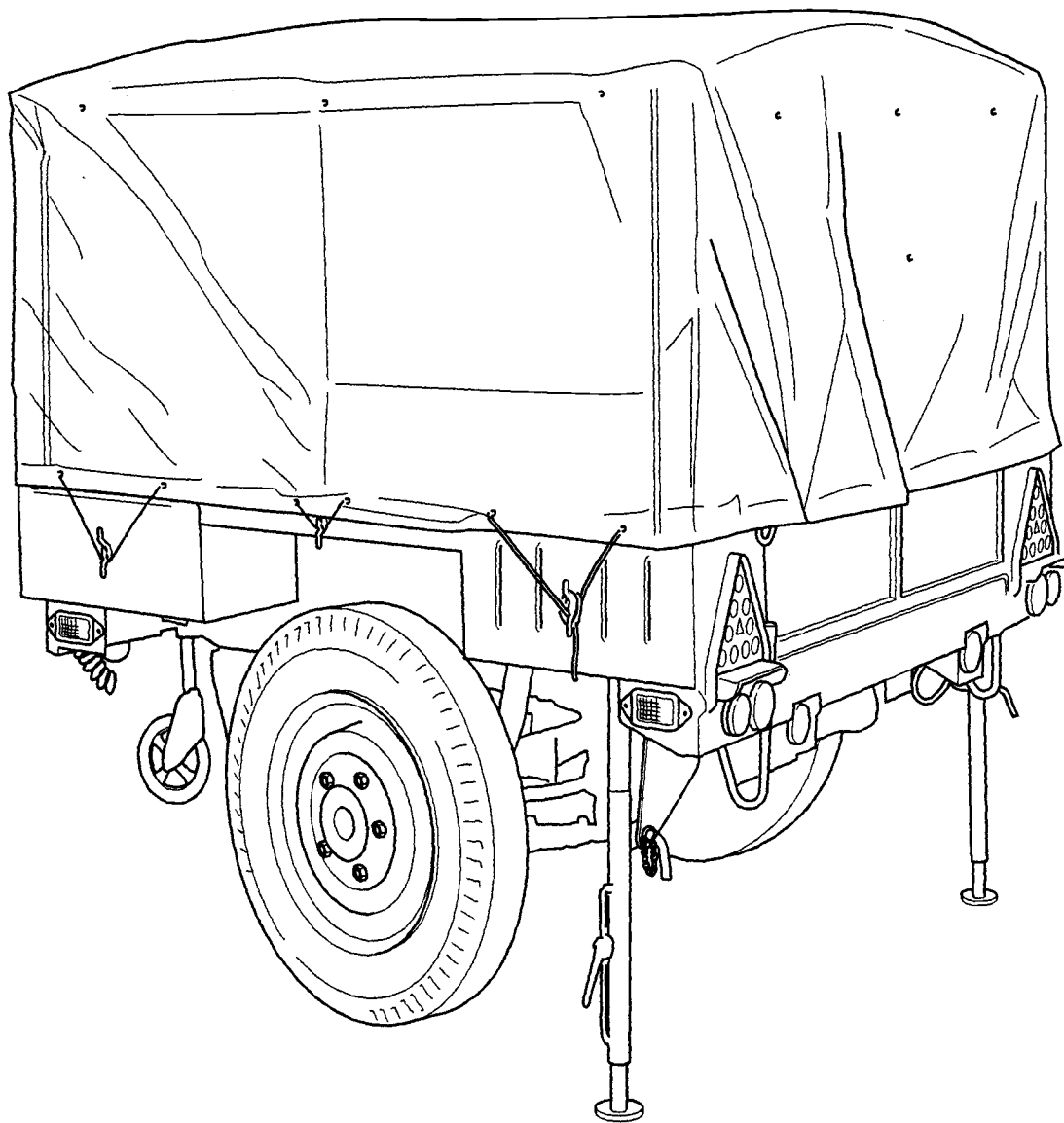


Fig 1 Equipment on a suitable base

- 3 Remove the canopy cover as shown in Fig 2, fold and store in a safe place.

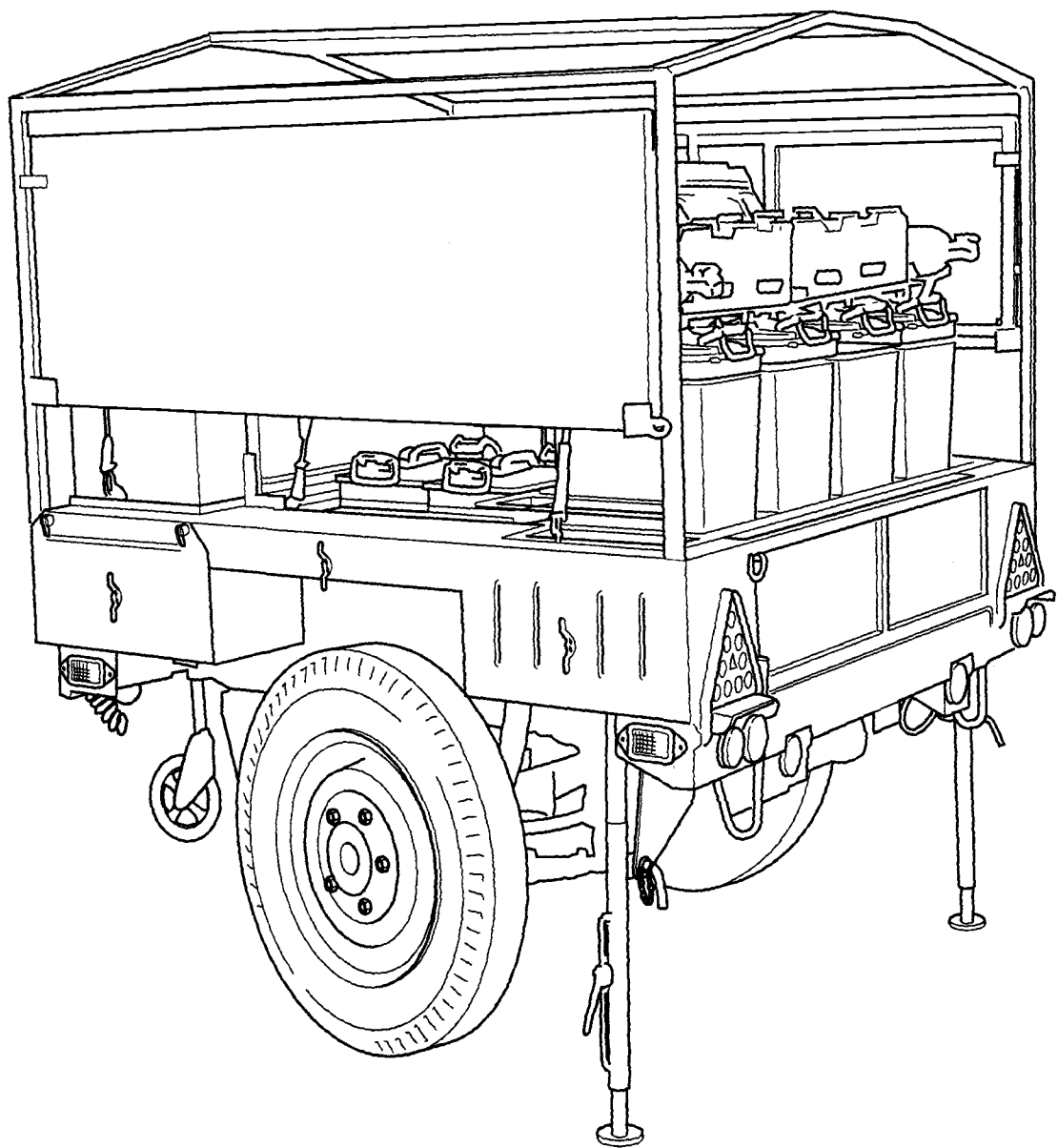


Fig 2 Canopy removed

- 4 Remove tables, as shown in Fig 3, by releasing clips and lift clear.

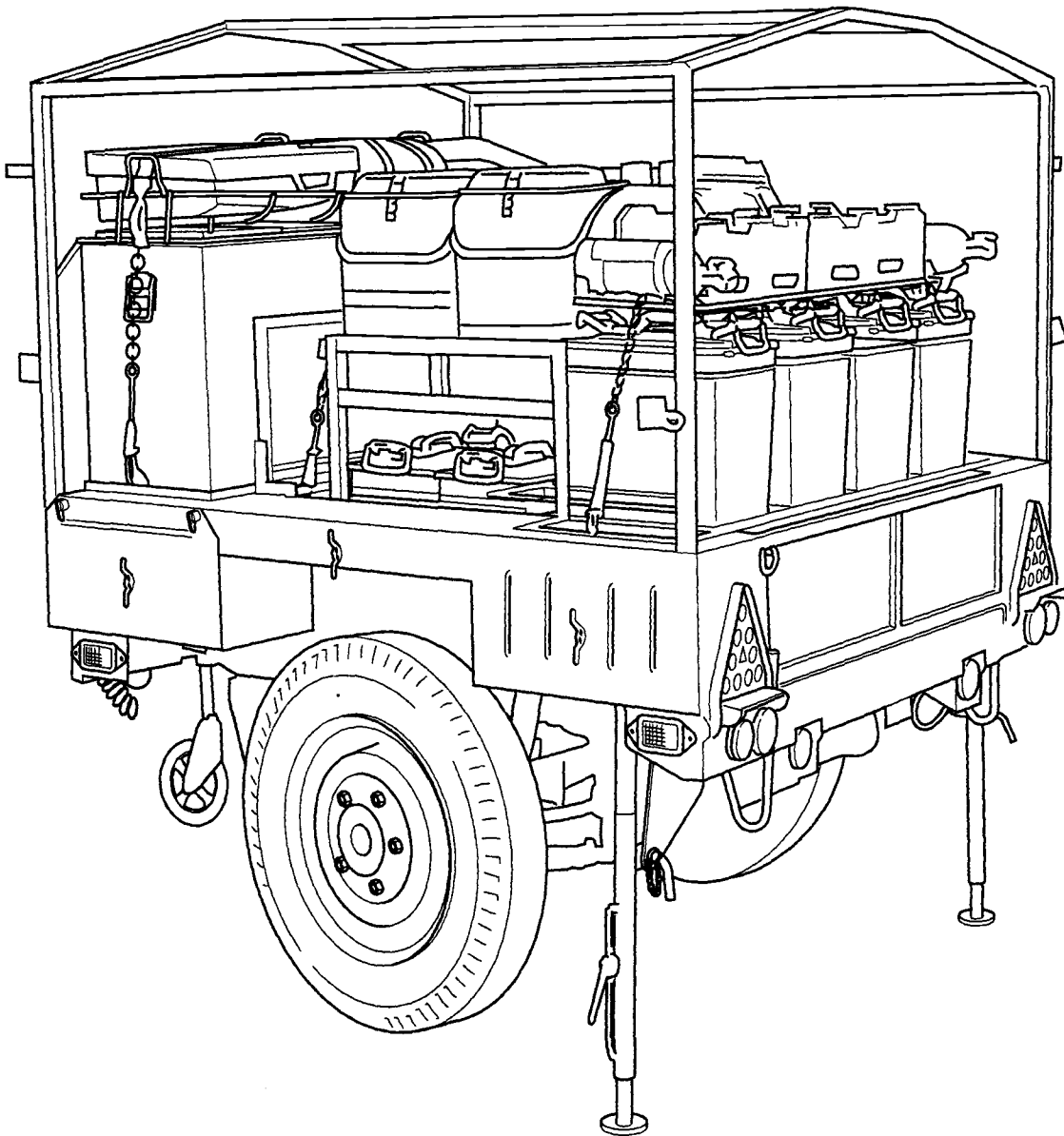


Fig 3 Tables removed

5 Remove canopy frame and lift clear. Swing out front table supports and lower table as shown in Fig 4.

NOTE

This should be carried out by at least two people, preferably four, with one person on each corner.

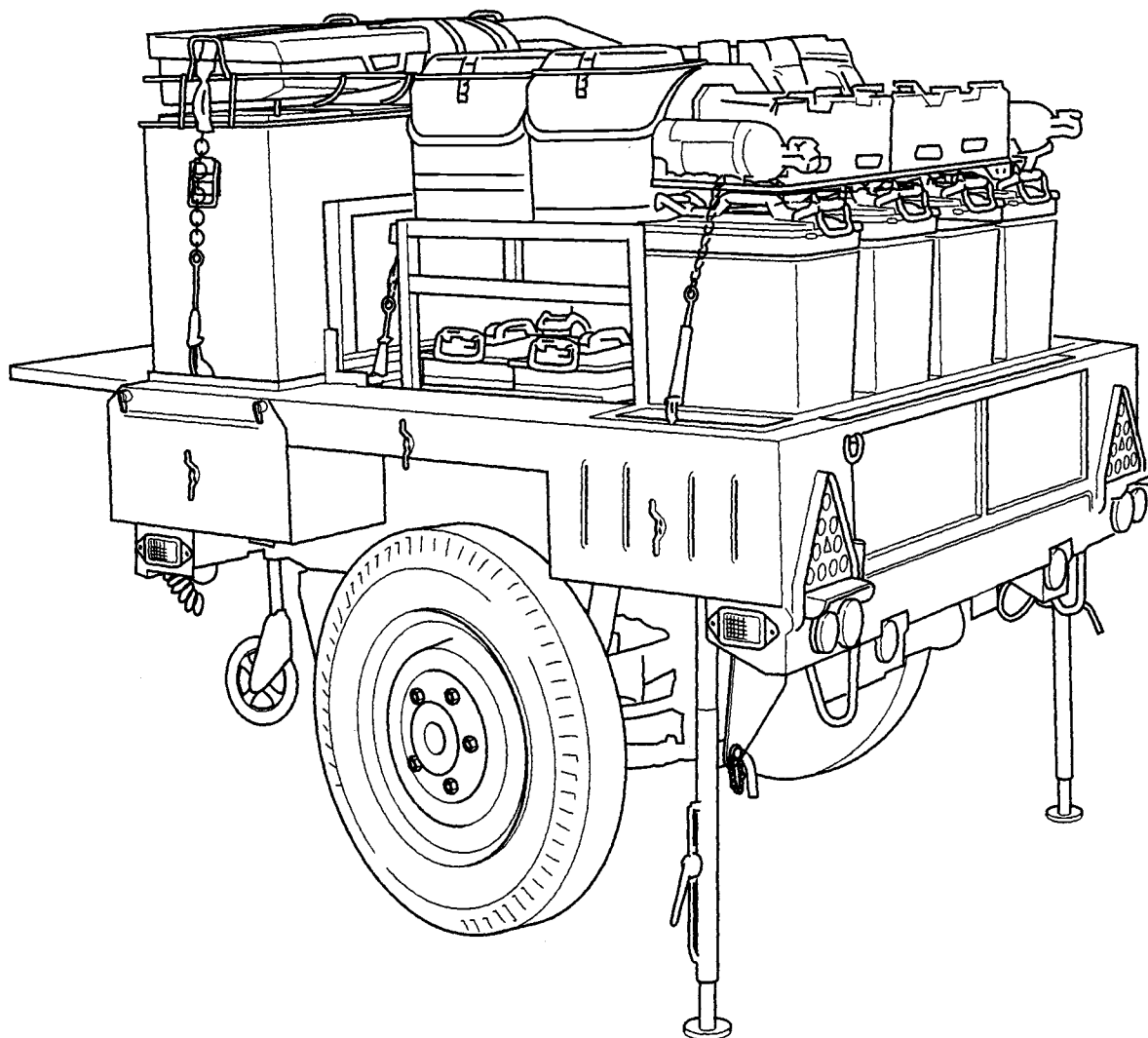


Fig 4 Canopy frame removed

6 Remove webbing straps from front and centre baskets. Remove containers from baskets as shown in Fig 5.

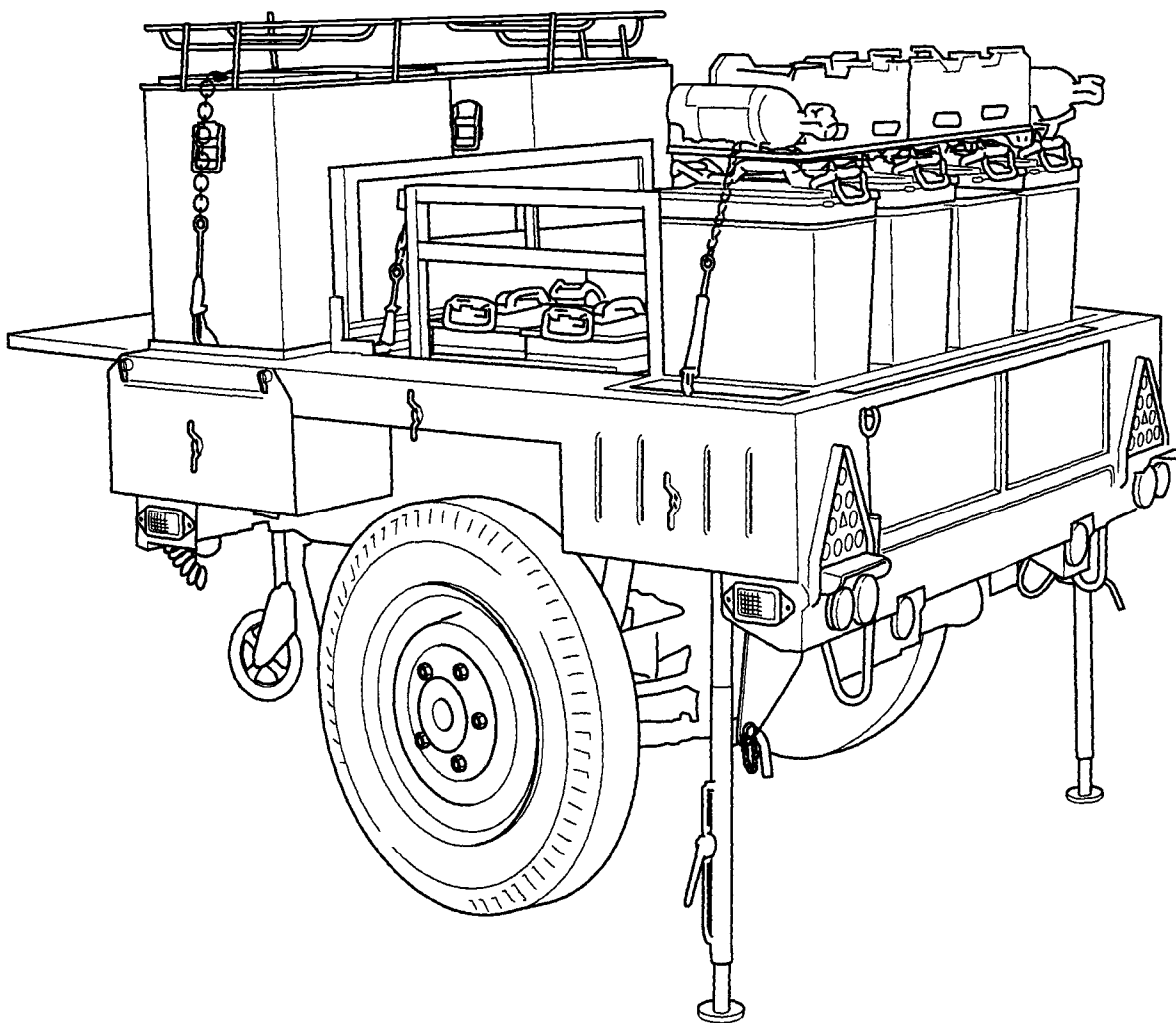


Fig 5 Containers removed

- 7 Release clamps holding front, centre and rear baskets. Remove baskets as shown in Fig 6. Place rear basket with fire extinguishers in a readily accessible place.

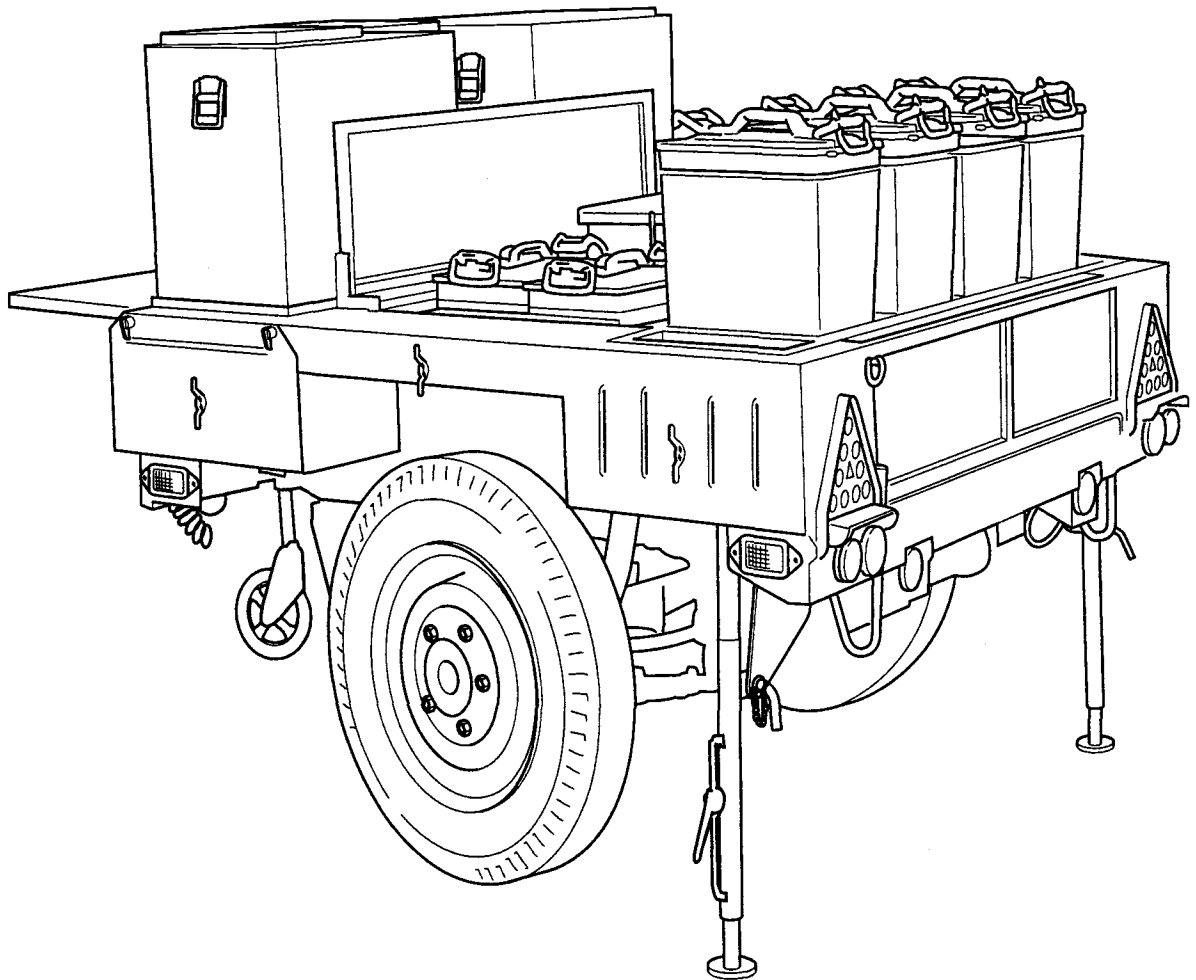


Fig 6 Baskets removed

8 Remove remaining equipment. Locate side table in square holes on one side. Lower tail-gate and flaps covering front burners as shown in Fig 7. Remove fire extinguishers from towing vehicle and locate near to the equipment.

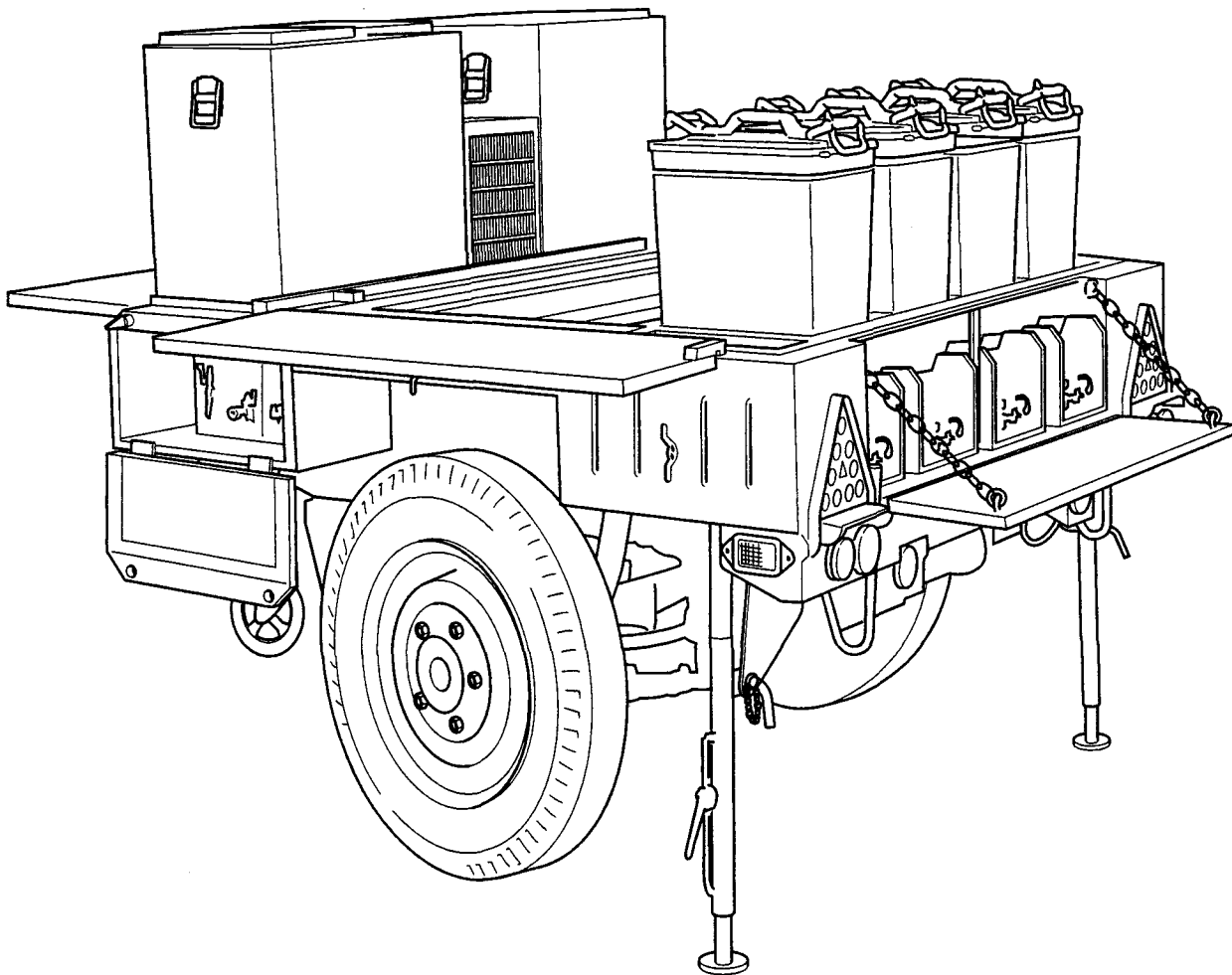


Fig 7 Removing remaining equipment

9 Remove LPG cylinders from the towing vehicle and locate in safe area. Set up for operation as shown in Fig 8.

WARNING

PERSONNEL INJURY. ALWAYS ENSURE GOOD VENTILATION WHEN USING IN ENCLOSED AREAS.

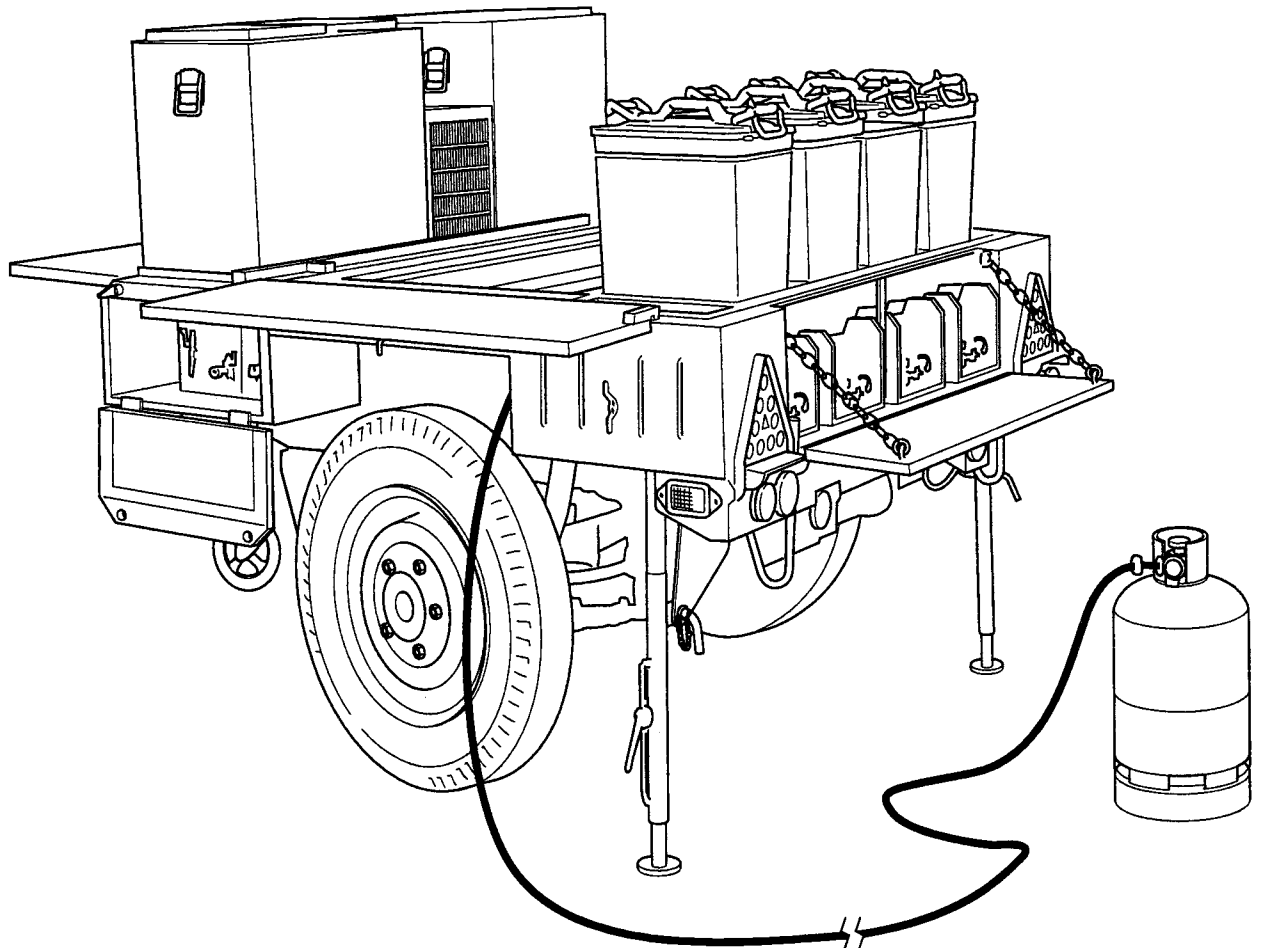


Fig 8 Outfit set up for operation

10 Equipment is reassembled in reverse order.

NOTE

Fire extinguisher and frame stand remote burners are not to be stored anywhere on the trailer. They are to be carried separately in the towing vehicle. Food and water are also to be transported separately.

SETTING UP**General****WARNING**

PERSONNEL INJURY. ENSURE THAT THE FIRE EXTINGUISHERS ARE READILY ACCESSIBLE.

CAUTION

EQUIPMENT DAMAGE. Burner slots must be cleaned with the tools supplied prior to use, prior to storage and after each meal.

- 11 After unloading as detailed in Paras 1 to 9 and shown in Figs 1 to 8 the trailer body should be examined for any visible damage.
- 12 Open the two access doors situated on either side of the Cooking Outfit beneath the ovens and lower the tail-gate as shown in Fig 8.
- 13 The side table can be placed in position if required on either side of the body. The table has two legs that locate in square holes on the top surface of the body.
- 14 Visually inspect all burners and fuel lines for signs of damage.

Connecting an LPG cylinder

- 15 Carry out visual check of the threads of the hose attachments and ensure that the hoses are not worn, chaffed, frayed or bulged.
 - 15.1 Fit the correct regulator to the LPG cylinder. Ensure that threaded union connections are clean and free from grit, rust, mud etc.
 - 15.2 Fit armoured hose to trailer port entry(s) as required. This operation requires the use of 2 (two) spanners. Ensure that one spanner is used to prevent the union fitting on the trailer from spinning.
 - 15.3 Before connecting the hose to the LPG regulator, lay out the hose so that it is free from twists and kinks. Connect the end of the hose that has the straight union to LPG regulator using 2 (two) spanners. Hold regulator steady in one direction and tighten armoured hose in the opposite direction.
 - 15.4 Depending on the number of LPG cylinders used and the number of hoses available, T-connectors may have to be used. If required, connect the T-connector first and then connect hoses with right angle unions to port entry.
 - 15.5 Ensure blanking off nuts are secured on the opposite port entries of the trailer, if hoses are only attached at one side.
 - 15.6 When using 2 (two) armoured hoses, connected with a T connector it is advisable to attach one hose to the rear and the remaining hose to either the front Mk 2 oven burner, a remote burner or to the Cooking Outfit No. 5.

PRE-LIGHTING LEAK TEST

WARNING

PERSONNEL INJURY. THE COOKING OUTFIT MUST ALWAYS BE TESTED FOR FUEL LEAKS PRIOR TO LIGHTING.

16 The pre-lighting leak test is carried out whenever:

16.1 Lighting up for the first time.

16.2 After extinguishing and long periods have elapsed and the Cooking Outfit has been exposed to change in temperature ie, overnight.

16.3 After a move/change in location.

16.4 Whenever maintenance/repairs have been carried out which have disturbed the fuel system.

17 The pre-lighting leak test is to be carried out using a soapy solution and a soft a bristled brush. Carry out the pre-lighting leak check as follows:

17.1 Ensure that the remote burner Main Control Valves (MCV), isolating valves and air shutters are closed. The redundant pre-heater control valve must also be closed.

17.2 Fully open LPG cylinder valve.

17.3 Apply a soapy solution to LPG cylinder regulator, armoured hoses connectors and T-connector (if used). No bubbles should appear in the soapy solution.

17.4 Apply a soapy solution to port entries, fuel feeder manifolds and to the closed isolating valves. No bubbles should appear in the soapy solution.

17.5 Apply a soapy solution to pipe and hose assemblies, front connector blocks and to the closed MCV's. No bubbles should appear in the soapy solution.

17.6 Apply a soapy solution to rear connector blocks and to the closed pre-heater control valves. No bubbles should appear in the soapy solution.

17.7 Open the first isolating valve and carry out Paras 17.4 to 17.6. Move the brush around all connections. No bubbles should appear in the soapy solution.

17.8 Open the second isolating valve and carry out Paras 17.4 to 17.6. Move the brush around all connections. No bubbles should appear in the soapy solution.

17.9 Open the third isolating valve and carry out Paras 17.4 to 17.6. Move the brush around all connections. No bubbles should appear in the soapy solution.

18 In order to minimise trip hazards always lay the fuel hoses that are attached to the port entries behind the trailer road wheel. Fuel hoses should be dug in soft ground and secured to the ground with a hook type shelter peg.

- 19 If a fuel leak is detected, bubbles will be seen in the soapy solution. Proceed as follows:
- 19.1 Turn fuel off at the cylinder.
 - 19.2 Check and tighten affected leaking equipment/unions.
 - 19.3 Turn fuel on at cylinder.
 - 19.4 Carry out a further soapy solution check to confirm no further fuel leaks.
 - 19.5 If fuel leak persists report as a fault.

Lighting instructions

- 20 To ignite the Cooking Outfit proceed as follows:
- 20.1 Ensure that all burner main control pre-heater and isolating valves and air shutters are completely closed.
 - 20.2 Open valve on gas cylinder and check connections for leaks as detailed in Para 16.
 - 20.3 Fully open isolating valves. The operating end valve nearest to attached port entry is to be used. Ensure remaining isolating valves are opened in sequence and progress in a logical order, when required for use.
 - 20.4 Slowly open burner main control valves and ignites gas issuing from the burner casting using a lighted taper soaked in methylated spirit.
 - 20.5 Carry out tasks detailed in Paras 20.1 to 20.4 for each burner required for use.

Regulating burner flame

- 21 When the heat from a burner flame requires to be regulated use the main control valve and the air shutter.

SHUTTING DOWN THE BURNERS

- 22 On completion of use shut down the burners as follows:
- 22.1 Close the valve on the gas cylinder.
 - 22.2 Allow the flames on all burners to extinguish naturally.
 - 22.3 Allow equipment to cool down and then close the burner main control and isolating valves.

DISCONNECTING AN LPG CYLINDER

23 To disconnect the LPG cylinder proceed as follows:

23.1 Ensure LPG cylinder valve is closed.

23.2 Ensure all valves are closed on trailer.

23.3 Disconnect LPG hose at trailer using correct tools.

23.4 Disconnect LPG hose at regulator using correct tools, ensuring that it is not kinked or twisted.

23.5 Disconnect LPG regulator from LPG cylinder using correct tools, and store in a designated area in accordance with JSP 319. Ensure that the regulator and cylinder connector are kept clean and dry.

CHAPTER 3
MAINTENANCE INSTRUCTIONS
CONTENTS

Para

1	Introduction
2	Scope of maintenance tasks
3	Special tools and test equipment
4	Sealants, adhesives and lubricants
	Maintenance instructions
5	Remove/replace remote burner units (WARNING)
6	Removal of rear remote burner unit
7	Removal of front (oven) remote burner unit
8	Replacement of remote burner units (front (oven) and rear)
	Burner main control valve maintenance
9	Gland packing
	Maintenance of isolating valve
10	Valve seals

Fig

Page

1	Mk 2 remote burner unit	3
2	Burner main control valve.....	4

INTRODUCTION

1 This chapter covers the maintenance instructions for the Cooking Outfit No. 4 Mk 2.

Scope of maintenance tasks

2 The following tasks are covered in this chapter:

- 2.1 Removal/replacement of the remote burner units.
- 2.2 Maintenance of the burner main control valve.
- 2.3 Maintenance of the isolating valve.

Special tools and test equipment

3 There are no special tools or test equipment required to carry out the tasks detailed in this chapter.

Sealants, adhesives and lubricants

4 There are no sealants, adhesives or lubricants required to carry out the tasks detailed in this chapter.

MAINTENANCE INSTRUCTIONS**Remove/replace remote burner units****WARNING**

PERSONNEL INJURY. REMOTE BURNER UNITS ARE NOT TO BE REMOVED FROM THE COOKING OUTFIT WHILST THE OUTFIT IS IN USE UNLESS THE CORRECT ISOLATION PROCEDURES HAVE BEEN CARRIED OUT. THE OUTFIT MUST BE CORRECTLY SHUT DOWN (ALL RESIDUAL FUEL BURNT OUT AND COOKING FLAMES EXTINGUISHED) PRIOR TO REMOVING BURNERS.

- 5 Removal of the Mk 2 remote burner units is carried out as detailed in the following paragraphs.

Removal of rear remote burner unit

- 6 To remove the rear burner unit proceed as follows:
- 6.1 Ensure that the fuel supply to the Cooking Outfit is turned off at the cylinder.
 - 6.2 Allow burners to cool prior to removal from the Cooking Outfit.
 - 6.3 Release the braided metal flexible fuel pipe by unscrewing the nut at the front connector block and lay clear of the burner.
 - 6.4 Release the locking latch at the front of the burner.
 - 6.5 Remove burner from cooking outfit.
 - 6.6 Do not open isolator valve controlling vacant burner location.

Removal of front (oven) remote burner unit

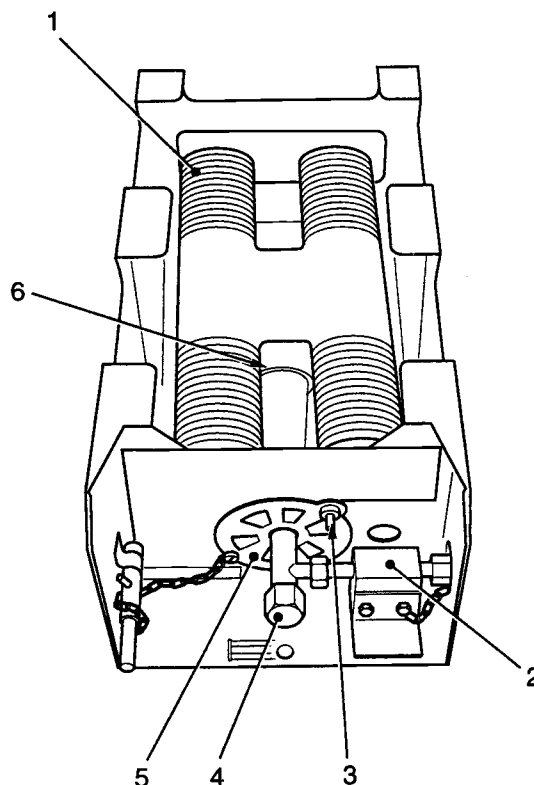
- 7 To remove the oven burner unit proceed as follows:
- 7.1 Ensure that the fuel supply to the Cooking Outfit is turned off at the cylinder.
 - 7.2 Allow burners to cool from the cooking outfit.
 - 7.3 Release the locking latch at the front of the burner.
 - 7.4 Position burner to allow access to the rear connector block, taking care not to put any strain on the braided metal flexible fuel pipe.
 - 7.5 Release the braided metal flexible fuel pipe at the rear connector block by unscrewing the nut.
 - 7.6 Remove the burner from Cooking Outfit.
 - 7.7 Do not open isolator valve controlling vacant burner location.

Replacement of remote burner units (front (oven) and rear)

- 8 The replacement of burner units on the Cooking Outfit is carried out in the reverse order of removal. When reconnecting the braided pipes care must be taken to ensure the pipe is not twisted or distorted.

NOTE

Always carry out pre-lighting leak test, as detailed in Chap 2 after reconnection of any pipes or valves.



- | | | | |
|---|-----------------------|---|----------------------|
| 1 | Burner casing | 4 | Control valve |
| 2 | Front connector block | 5 | Air shutter assembly |
| 3 | Air shutter control | 6 | Mixing chamber |

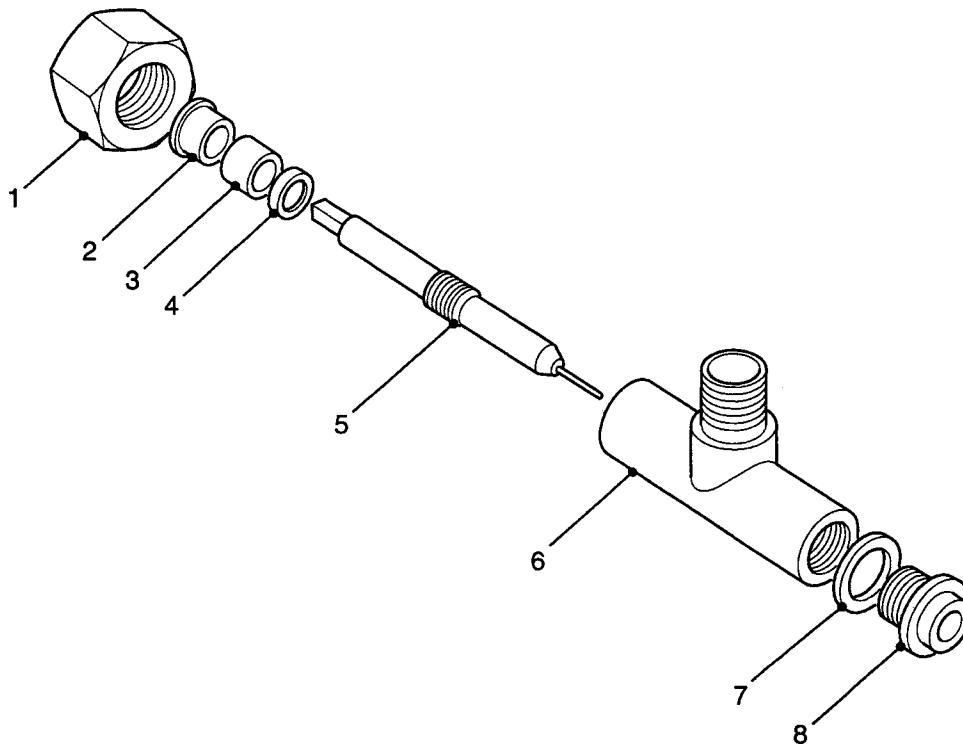
Fig 1 Remote burner unit

Burner main control valve maintenance

Gland packing

- 9 To renew the control valve gland packing (Fig 2 (3)) proceed as follows:
 - 9.1 Unscrew the gland nut (1) and remove it from the spindle (5).
 - 9.2 Release the gland collar (2) from the valve body (6) and remove from the spindle.
 - 9.3 Turn the valve spindle anti-clockwise using the control key until it can be withdrawn from the valve.
 - 9.4 Remove the old gland packing material and the gland washer (4).
 - 9.5 Carefully clean the valve spindle ensuring that the needle is not bent.

- 9.6 Screw the spindle into the valve approximately two turns from the closed position.
- 9.7 Replace the gland washer, ensuring the chamfer is facing the gland packing.
- 9.8 Wind approximately two and a half lengths of the packing material in a clockwise direction, onto the valve spindle, pressing into the housing after each complete length.
- 9.9 Replace gland collar.
- 9.10 Replace gland nut and gently tighten.
- 9.11 Ensure valve spindle is free to turn.
- 9.12 Carry out a pre-lighting leak test, as detailed in Chap 2.



- | | | | |
|---|---------------|---|------------|
| 1 | Gland nut | 5 | Spindle |
| 2 | Gland collar | 6 | Valve body |
| 3 | Gland packing | 7 | Washer |
| 4 | Gland washer | 8 | Jet |

Fig 2 Burner main control valve

Maintenance of isolating valve

Valve seals

- 10 To maintain the isolating valve proceed as follows:
 - 10.1 Turn off fuel supply at cylinder.
 - 10.2 Close all valves.
 - 10.3 Remove valve knob by unscrewing small securing nut.
 - 10.4 Remove gland nut and slide off spindle.
 - 10.5 Unscrew valve spindle from housing.
 - 10.6 Remove old seals carefully and clean valve spindle with clean rag or cloth.
 - 10.7 Lubricate spindle using thin oil or light grease.
 - 10.8 Slide small O-ring over seat end of spindle and locate in recess provided.
 - 10.9 Screw valve spindle back into housing.
 - 10.10 Lubricate large O-ring and carefully slide over end of spindle, protruding from housing, and push up to housing.
 - 10.11 Replace gland nut and tighten.
 - 10.12 Secure knob to spindle with nut.
 - 10.13 Carry out a pre-lighting leak test, as detailed in Chap 2.

CHAPTER 4
FAULT DIAGNOSIS
CONTENTS

Para

1 Fault diagnosis
 General

Table

Page

1 Fault diagnosis – LPG (Propane) Burning..... 1/2

FAULT DIAGNOSIS

General

1 This table contains information useful in diagnosing and correcting unsatisfactory operation or failure of the Cooking Outfit. If a fault cannot be rectified by using the information given below or by the maintenance instructions detailed in Chap 3, report as a fault to REME.

TABLE 1 FAULT DIAGNOSIS – LPG (PROPANE) BURNING

Serial (1)	Fault (2)	Possible cause (3)	Remedy (4)
1	Burner fails to ignite	1.1 Incorrect lighting procedure 1.2 Insufficient fuel 1.3 Control valve blocked 1.4 Burner slots blocked 1.5 Control valve jet or needle damaged	1.1 Check and repeat 1.2 Replace gas cylinder 1.3 Open and close several times 1.4 Clear with slot cleaner 1.5 Replace
2	Burner flame poor or yellow	2.1 Gas cylinder pressure low 2.2 Control valve jet blocked 2.3 Air shutter incorrectly set 2.4 Burner slots blocked 2.5 Leak at pipe connection	2.1 Replace gas cylinder NOTE If T-connector is in use, consider its removal and utilise single bottle feed. 2.2 Open and close valve several times 2.3 Adjust air shutter until flame burns blue - green 2.4 Clear with slot cleaner 2.5 Tighten mating nut, if this fails report as a fault to REME
3	Burner flame difficult to control	3.1 Excessive gas pressure 3.2 Worn control valve jet	3.1 Check valve regulator for correct output pressure. If incorrect, renew valve regulator 3.2 Replace

COMMENT(S) ON AESP*

To: DCCS
BFPO 794

From:
.....
.....

Sender's Reference	BIN Number	Date
AESP* Title:		
Chapter(s)/Instruction	Page(s)/Paragraph(s)	
If you require more space, please use the reverse of this form or a separate piece of paper. Comment(s): 		

Signed: Telephone No.:
 Name (Capitals): Rank/Grade: Date:
 ✕

FOR AESP* SPONSOR USE ONLY

To: From:

Thank you for commenting on AESP*:
 Your reference: Dated:

Action is being taken to:	Tick		Tick
Issue a revised/amended AESP*		Under investigation	
Incorporate comment(s) in future amendments		No action required	
Remarks			

Signed: Telephone No.:
 Name (Capitals): Rank/Grade: Date:

* AESP or EMER