

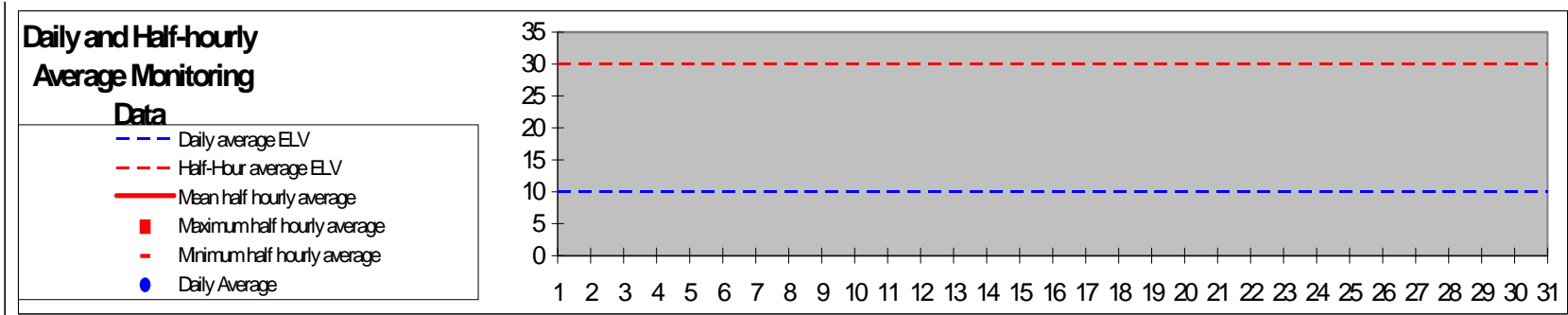
Permit Number : EPR/UP3232AC

Operator : North London Waste Authority

Facility : Edmonton EcoPark

Form Number : Air 1 / **XX/XX/XXX**

Reporting of Continuously Monitored Emissions to Air for Particulates for the month of, 20__



Monthly summary		Date	1	2	3	4	5	6	7	8	9	10	11	12	13	14	15	16	17	18	19	20	21	22	23	24	25	26	27	28	29	30	31
Half-hourly average	Half-Hour average ELV		30	30	30	30	30	30	30	30	30	30	30	30	30	30	30	30	30	30	30	30	30	30	30	30	30	30	30	30	30	30	30
	Monthly maximum	0																															
	Monthly mean	#####																															
	Monthly minimum	0																															
	Total invalid results	0																															
Sum of exceedances	0	No. of exceedances of ELV	0	0	0	0	0	0	0	0	0	0	0	0	0	0	0	0	0	0	0	0	0	0	0	0	0	0	0	0	0	0	0
Daily average	Daily average ELV		10	10	10	10	10	10	10	10	10	10	10	10	10	10	10	10	10	10	10	10	10	10	10	10	10	10	10	10	10	10	10
	Monthly maximum	0																															
	No. of invalid days	0	Value valid? (Y/N)	Y	Y	Y	Y	Y	Y	Y	Y	Y	Y	Y	Y	Y	Y	Y	Y	Y	Y	Y	Y	Y	Y	Y	Y	Y	Y	Y	Y	Y	
Sum of exceedances	0	Value exceeds ELV (Y/N)	N	N	N	N	N	N	N	N	N	N	N	N	N	N	N	N	N	N	N	N	N	N	N	N	N	N	N	N	N	N	

Signed Date.....
 (authorised to sign as representative of North London Waste Authority)

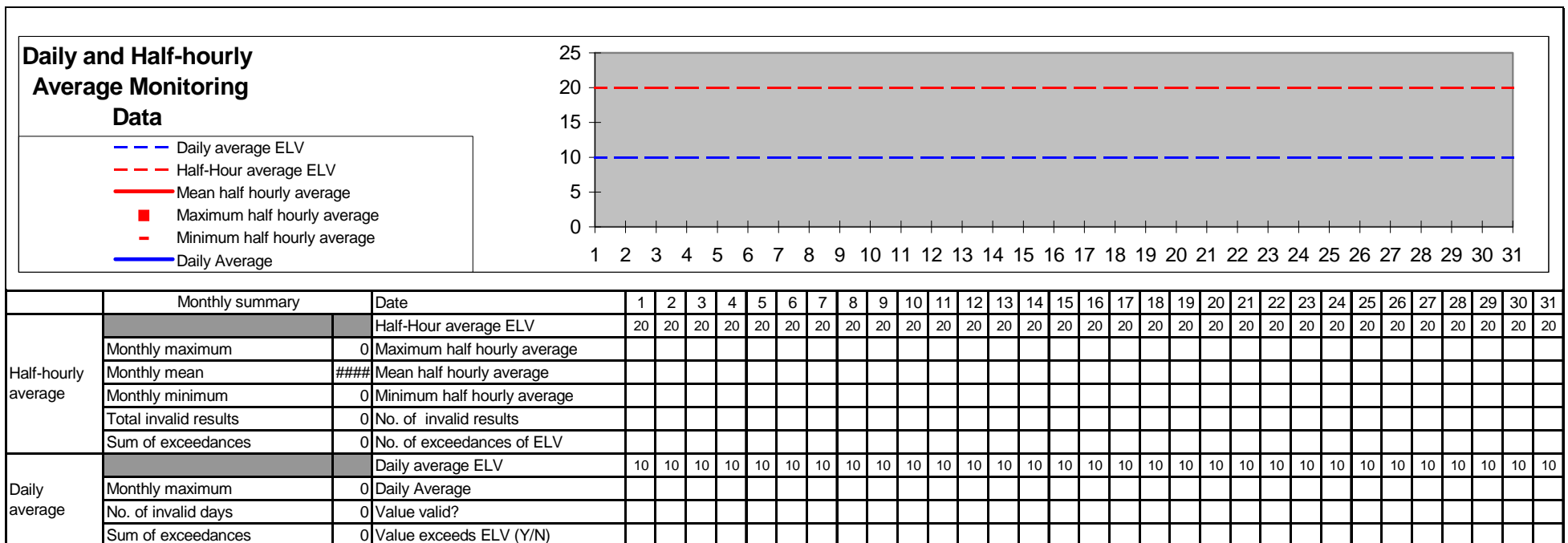
Permit Number : EPR/UP3232AC

Operator : North London Waste Authority

Facility : Edmonton EcoPark

Form Number : Air 2 / ~~XX/XX/XX~~

Reporting of Continuously Monitored Emissions to Air for TOC for the month of, 20__



Signed Date.....
 (authorised to sign as representative of North London Waste Authority)

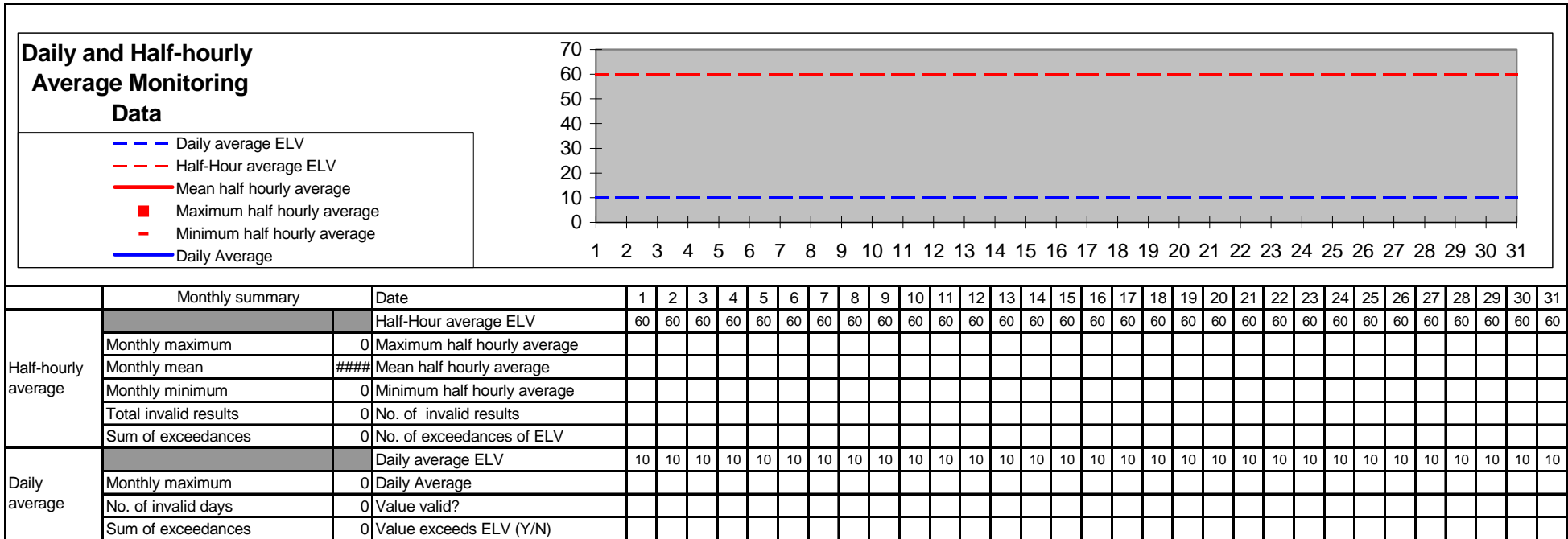
Permit Number : EPR/UP3232AC

Operator : North London Waste Authority

Facility : Edmonton EcoPark

Form Number : Air 3 / ~~XX/XX/XXX~~

Reporting of Continuously Monitored Emissions to Air for Hydrogen Chloride for the month of, 20__



Signed Date.....
 (authorised to sign as representative of North London Waste Authority)

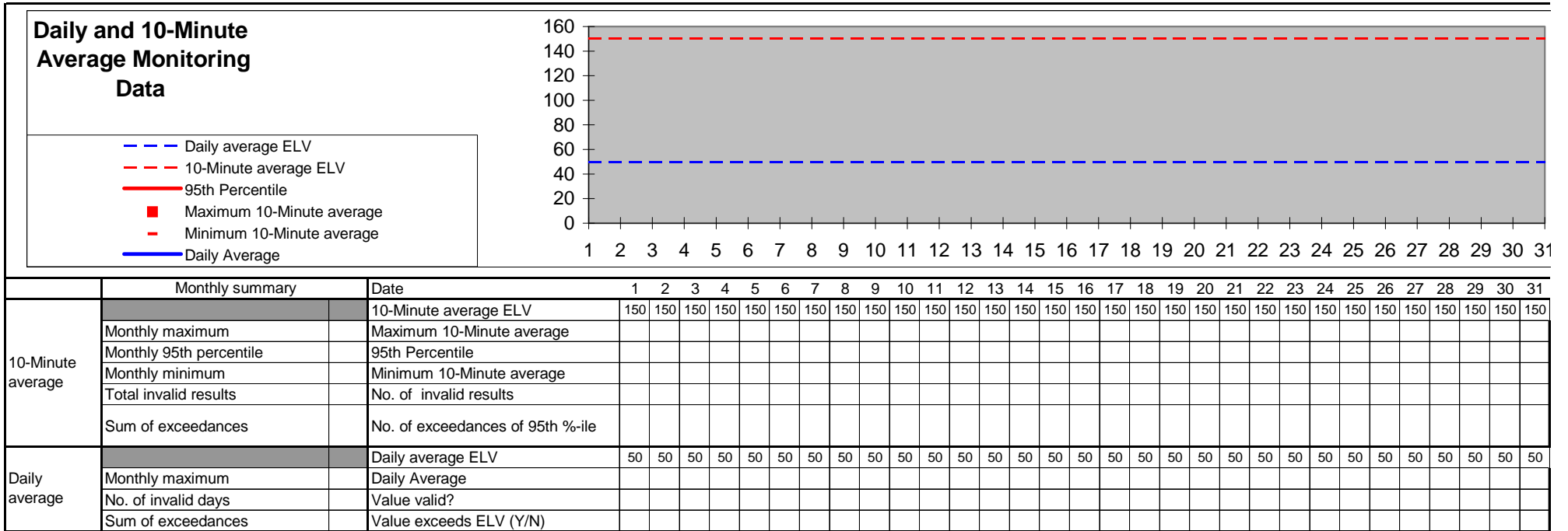
Permit Number : EPR/UP3232AC

Operator : North London Waste Authority

Facility : Edmonton EcoPark

Form Number : Air 4 / ~~XX/XX/XXX~~

Reporting of Continuously Monitored Emissions to Air for Carbon Monoxide for the month of, 20__



Signed Date.....
 (authorised to sign as representative of North London Waste Authority)

Permit Number : EPR/UP3232AC

Operator : North London Waste Authority

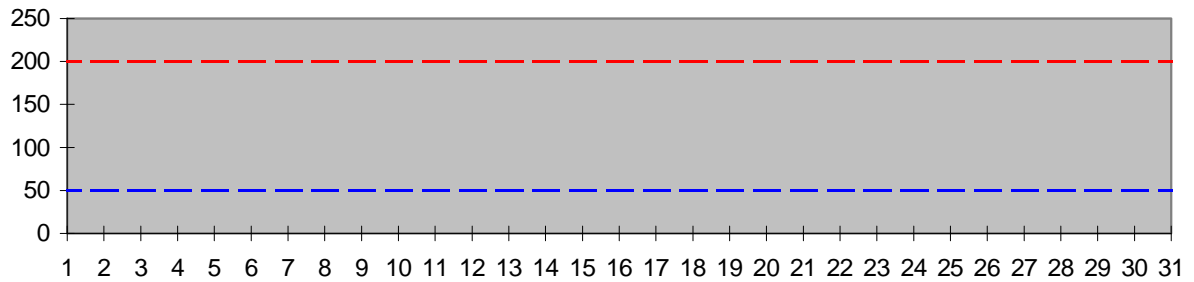
Facility : Edmonton EcoPark

Form Number : Air 5 / ~~XX/XX/XXX~~

Reporting of Continuously Monitored Emissions to Air for Sulphur Dioxide for the month of, 20__

Daily and Half-hourly Average Monitoring Data

- Daily average ELV
- Half-Hour average ELV
- Mean half hourly average
- Maximum half hourly average
- Minimum half hourly average
- Daily Average



Monthly summary		Date	1	2	3	4	5	6	7	8	9	10	11	12	13	14	15	16	17	18	19	20	21	22	23	24	25	26	27	28	29	30	31
Half-hourly average		Half-Hour average ELV	200	200	200	200	200	200	200	200	200	200	200	200	200	200	200	200	200	200	200	200	200	200	200	200	200	200	200	200	200	200	
	Monthly maximum	0	Maximum half hourly average																														
	Monthly mean	####	Mean half hourly average																														
	Monthly minimum	0	Minimum half hourly average																														
	Total invalid results	0	No. of invalid results																														
	Sum of exceedances	0	No. of exceedances of ELV																														
Daily average		Daily average ELV	50	50	50	50	50	50	50	50	50	50	50	50	50	50	50	50	50	50	50	50	50	50	50	50	50	50	50	50	50		
	Monthly maximum	0	Daily Average																														
	No. of invalid days	0	Value valid?																														
	Sum of exceedances	0	Value exceeds ELV (Y/N)																														

Signed Date.....
 (authorised to sign as representative of North London Waste Authority)

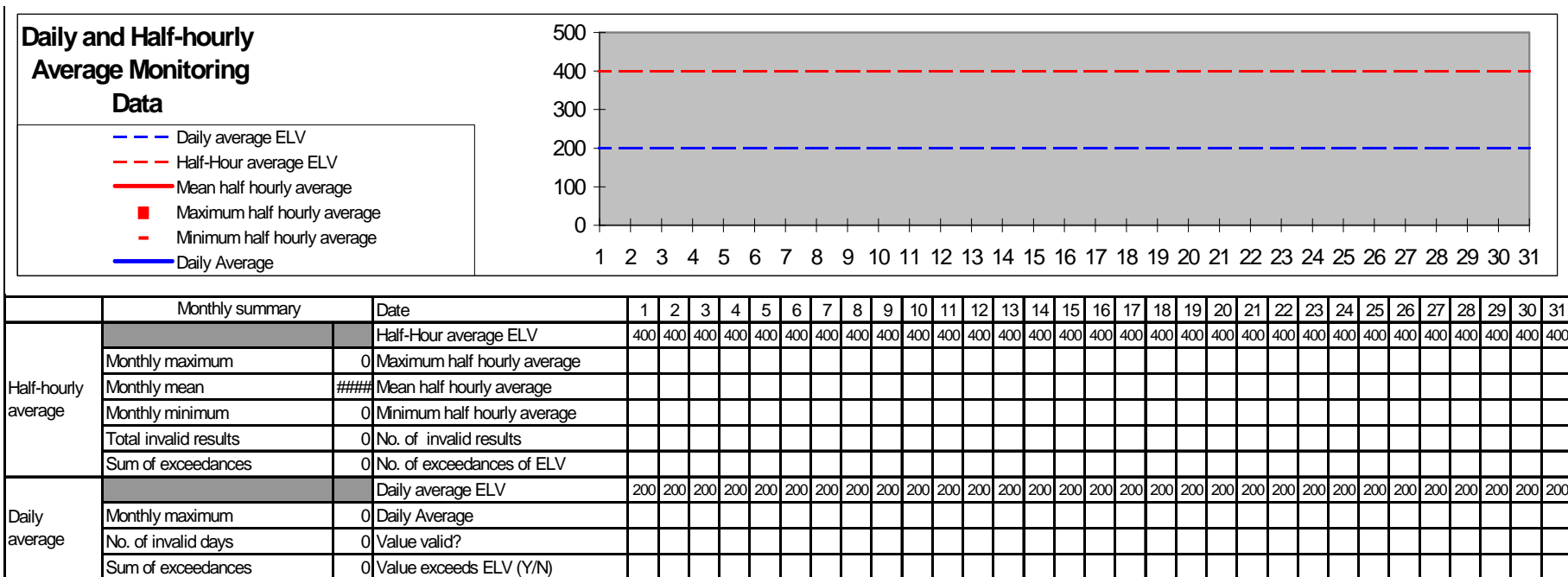
Permit Number : EPR/UP3232AC

Operator : North London Waste Authority

Facility : Edmonton EcoPark

Form Number : Air 6 / **XX/XX/XXX**

Reporting of Continuously Monitored Emissions to Air for Oxides of Nitrogen for the month of, 20__



Signed Date.....
 (authorised to sign as representative of North London Waste Authority)

Permit Number : EPR/UP3232AC

Operator : North London Waste Authority

Facility : Edmonton EcoPark

Form Number : Air 7 / **XX/XX/XX**

Reporting of periodically monitored emissions to air for the period from to

Emission Point	Substance / Parameter	Emission Limit Value	Reference Period	Result ^[1]	Test Method	Result Date and Time ^[2]	Uncertainty ^[3]
A1	Hydrogen fluoride	2 mg/m ³	Periodic over minimum 1-hour period		BS ISO 15713		
A1	Cadmium & thallium and their compounds (total)	0.05 mg/m ³	over minimum 30 minute, maximum 8 hour period		BS EN 14385		
A1	Mercury and its compounds	0.05 mg/m ³	over minimum 30 minute, maximum 8 hour period		BS EN 13211		
A1	Sb, As, Pb, Cr, Co, Cu, Mn, Ni and V and their compounds (total)	0.5 mg/m ³	over minimum 30 minute, maximum 8 hour period		BS EN 14385		
A1	Dioxins / Furans (I-TEQ)	0.1 ng/m ³	over minimum 6 hour period, maximum 8 hour period		BS EN 1948 Parts 1, 2 and 3		
A1	Dioxin-like PCBs (WHO-TEQ Humans / Mammals)	No limit applies	over minimum 6 hour period, maximum 8 hour period		BS EN/TS 1948-4		
A1	Dioxin-like PCBs (WHO-TEQ Fish)	No limit applies	over minimum 6 hour period, maximum 8 hour period		BS EN/TS 1948-4		
A1	Dioxin-like PCBs (WHO-TEQ Birds)	No limit applies	over minimum 6 hour period, maximum 8 hour period		BS EN/TS 1948-4		

Emission Point	Substance / Parameter	Emission Limit Value	Reference Period	Result ^[1]	Test Method	Result Date and Time ^[2]	Uncertainty ^[3]
A1	Dioxins / furans (WHO-TEQ Humans / Mammals)	No limit applies	over minimum 6 hour period, maximum 8 hour period		BS EN/TS 1948-4		
A1	Dioxins / furans (WHO-TEQ Fish)	No limit applies	over minimum 6 hour period, maximum 8 hour period		BS EN/TS 1948-4		
A1	Dioxins / furans (WHO-TEQ Birds)	No limit applies	over minimum 6 hour period, maximum 8 hour period		BS EN/TS 1948-4		
	<i>Poly-cyclic aromatic hydrocarbons (PAHs)</i>						
A1	Total	No limit applies	over minimum 6 hour period, maximum 8 hour period		BS ISO 11338-1 and BS ISO 1138-2		
A1	Anthanthrene	No limit applies					
A1	Benzo{a}anthracene	No limit applies					
A1	Benzo[b]fluoranthene	No limit applies					
A1	Benzo[k]fluoranthene	No limit applies					
A1	Benzo[b]naph(2,1-d)thiophene	No limit applies					
A1	Benzo[c]phenanthrene	No limit applies					
A1	Benzo[ghi]perylene	No limit applies					

Emission Point	Substance / Parameter	Emission Limit Value	Reference Period	Result ^[1]	Test Method	Result Date and Time ^[2]	Uncertainty ^[3]
A1	Benzo[a]pyrene	No limit applies					
A1	Cholanthrene	No limit applies					
A1	Chrysene	No limit applies					
A1	Cyclopenta(c,d)pyrene	No limit applies					
A1	Dibenzo[ah]anthracene	No limit applies					
A1	Dibenzo[a,i]pyrene	No limit applies					
A1	Fluoranthene	No limit applies					
A1	Indo[1,2,3-cd]pyrene	No limit applies					
A1	Naphthalen						

Emission Point	Substance / Parameter	Emission Limit Value	Reference Period	Result ^[1]	Test Method	Result Date and Time ^[2]	Uncertainty ^[3]
A2	Hydrogen fluoride	2 mg/m ³	Periodic over minimum 1-hour period		BS ISO 15713		
A2	Cadmium & thallium and their compounds (total)	0.05 mg/m ³	over minimum 30 minute, maximum 8 hour period		BS EN 14385		
A2	Mercury and its compounds	0.05 mg/m ³	over minimum 30 minute, maximum 8 hour period		BS EN 13211		
A2	Sb, As, Pb, Cr, Co, Cu, Mn, Ni and V and their compounds (total)	0.5 mg/m ³	over minimum 30 minute, maximum 8 hour period		BS EN 14385		
A2	Dioxins / Furans (I-TEQ)	0.1 ng/m ³	over minimum 6 hour period, maximum 8 hour period		BS EN 1948 Parts 1, 2 and 3		
A2	Dioxin-like PCBs (WHO-TEQ Humans / Mammals)	No limit applies	over minimum 6 hour period, maximum 8 hour period		BS EN/TS 1948-4		
A2	Dioxin-like PCBs (WHO-TEQ Fish)	No limit applies	over minimum 6 hour period, maximum 8 hour period		BS EN/TS 1948-4		
A2	Dioxin-like PCBs (WHO-TEQ Birds)	No limit applies	over minimum 6 hour period, maximum 8 hour period		BS EN/TS 1948-4		

Emission Point	Substance / Parameter	Emission Limit Value	Reference Period	Result ^[1]	Test Method	Result Date and Time ^[2]	Uncertainty ^[3]
A2	Dioxins / furans (WHO-TEQ Humans / Mammals)	No limit applies	over minimum 6 hour period, maximum 8 hour period		BS EN/TS 1948-4		
A2	Dioxins / furans (WHO-TEQ Fish)	No limit applies	over minimum 6 hour period, maximum 8 hour period		BS EN/TS 1948-4		
A2	Dioxins / furans (WHO-TEQ Birds)	No limit applies	over minimum 6 hour period, maximum 8 hour period		BS EN/TS 1948-4		
	<i>Poly-cyclic aromatic hydrocarbons (PAHs)</i>						
A2	Total	No limit applies	over minimum 6 hour period, maximum 8 hour period		BS ISO 11338-1 and BS ISO 1138-2		
A2	Anthanthrene	No limit applies					
A2	Benzo{a}anthracene	No limit applies					
A2	Benzo[b]fluoranthene	No limit applies					
A2	Benzo[k]fluoranthene	No limit applies					
A2	Benzo[b]naph(2,1-d)thiophene	No limit applies					
A2	Benzo[c]phenanthrene	No limit applies					
A2	Benzo[ghi]perylene	No limit applies					
A2	Benzo[a]pyrene	No limit applies					

Emission Point	Substance / Parameter	Emission Limit Value	Reference Period	Result ^[1]	Test Method	Result Date and Time ^[2]	Uncertainty ^[3]
A2	Cholanthrene	No limit applies					
A2	Chrysene	No limit applies					
A2	Cyclopenta(c,d)pyrene	No limit applies					
A2	Dibenzo[ah]anthracene	No limit applies					
A2	Dibenzo[a,i]pyrene	No limit applies					
A2	Fluoranthene	No limit applies					
A2	Indo[1,2,3-cd]pyrene	No limit applies					
A2	Naphthalen						

[1] For dioxins and dioxin-like PCBs, the result are to be reported as a range based on: All congeners less than the detection limit assumed to be zero as a minimum, and all congeners less than the detection limit assumed to be at the detection limit as a maximum

[2] The date and time of the sample that produced the result is given.

[3] The uncertainty associated with the quoted result at the 95% confidence interval, unless otherwise stated.

Signed Date.....
 (authorised to sign as representative of North London Waste Authority)

Permit Number : EPR/UP3232AC

Operator : North London Waste Authority

Facility : Edmonton EcoPark

Form Number : R1 / ~~XX/XX/XXX~~

Reporting of Waste Disposal and Recovery for the year

Waste Description	Disposal Route	Tonnes	Recovery Tonnes
1) Hazardous Wastes			
APC Residues			
IBA which is classified as hazardous waste			
Total hazardous waste			
2) Non-Hazardous Wastes			
IBA			
Other non-hazardous wastes			
Total non-hazardous waste			
TOTAL WASTE	-		

Operator's comments :

Signed Date.....
(authorised to sign as representative of North London Waste Authority)

Permit Number : EPR/UP3232AC

Operator : North London Waste Authority

Facility : Edmonton EcoPark

Form Number : WU/RM1 / ~~XX/XX/XX~~

Reporting of Water and Other Raw Material Usage for the year

Raw Material	Usage	Unit	Specific Usage	Unit
Mains water		m ³		m ³ /t
Total water usage		m ³		m ³ /t
Urea		Tonnes		kg/t
Activated carbon		Tonnes		kg/t
Lime/hydrated lime or sodium bicarbonate		Tonnes		kg/t

Operator's comments :

Signed Date.....
(authorised to sign as representative of North London Waste Authority)

Permit Number : EPR/UP3232AC

Operator : North London Waste Authority

Facility : Edmonton EcoPark

Form Number : energy 1 / ~~XX/XX/XXX~~

Reporting of Energy Usage/Export for the year

Energy Source	Energy Usage	Unit	Primary Energy note 1 (MWh)
Electricity produced		MWh	
Electricity imported		MWh	
Electricity Exported		MWh	
Gas Oil		tonnes	
Steam/hot water Exported		MWh	

Note 1 Conversion factor for imported electricity to primary energy =

Operator's comments :

Signed Date.....
(authorised to sign as representative of North London Waste Authority)

Permit Number : EPR/UP3232AC

Operator : North London Waste Authority

Facility : Edmonton EcoPark

Form Number : Residues 1 / ~~XX/XX/XXX~~

Reporting of residue quality for the period fromto.....

Ash Composition (TOC/LOI)			
	LOI (%)	% Carbon (TOC) ^{w/w}	
Bottom Ash	*	*	

* At least one of LOI or TOC to be reported.

Ash Composition - Metals													
	Sb mg/kg	Cd mg/kg	Tl mg/kg	Hg mg/kg	Pb mg/kg	Cr mg/kg	Cu mg/kg	Mn mg/kg	Ni mg/kg	As mg/kg	Co mg/kg	V mg/kg	Zn mg/kg
Bottom ash													
Fly ash													
APC residues													
Other solid residues													

Ash composition dioxins and dioxin-like PCBs					
	DIOXIN I-TEQ ng/kg	DIOXIN WHO-TEQ ng/kg			DIOXIN-LIKE PCBs ng/kg
		Humans / mammals	Birds	Fish	
Bottom ash					
Fly ash					
APC residues					
Other solid residues					

Signed Date.....
 (authorised to sign as representative of North London Waste Authority)

Permit Number : EPR/UP3232AC

Operator : North London Waste Authority

Facility : Edmonton EcoPark

Form Number : Residues 2 / ~~XX/XX/XXX~~

Reporting of Ash Solubility for the period fromto.....

Ash solubility – total soluble fractions	
	Total soluble fraction %
Bottom ash	
Fly ash	
APC residues	
Other solid residues	

Ash Solubility - Metals													
	Sb mg/kg	Cd mg/kg	Tl mg/kg	Hg mg/kg	Pb mg/kg	Cr mg/kg	Cu mg/kg	Mn mg/kg	Ni mg/kg	As mg/kg	Co mg/kg	V mg/kg	Zn mg/kg
Bottom ash													
Fly ash													
APC residues													
Other solid residues													

Signed Date.....
(authorised to sign as representative of North London Waste Authority)

Permit Number : EPR/UP3232AC

Operator : North London Waste Authority

Facility : Edmonton EcoPark

Form Number : performance 1 / ~~XX/XX/XX~~

Reporting of other performance indicators for the period.....

Parameter	Unit	Result
Total municipal waste incinerated	tonnes	
Total commercial waste incinerated	tonnes	
Total waste received at Resource Recovery Centre	tonnes	
Total waste received at Recycling and Fuel Preparation Facility	tonnes	
Total waste received at gully waste management facility	tonnes	
Number of periods of abnormal operation	periods	
Cumulative hours of abnormal operation for this calendar year	hours	

Operator's comments :

Signed Date.....
(authorised to sign as representative of North London Waste Authority)