



Ministry
of Defence

Head of Defence Statistics (Air)

MINISTRY OF DEFENCE

Shackleton
No 1 Site, HQ Air Command
Walters Ash
HIGH WYCOMBE, HP14 4UE

Telephone [MOD]: **95221 6822**

Telephone [Civ]: **01494 486822**

E-mail: **DefStrat-Stat-Air-Hd@mod.gov.uk**

Ref: FOI2017/07883

1 September 2017

Dear [REDACTED]

Thank you for your email of 03 August 2017 requesting the following information:

1. *Would you please provide DS (Air) statistics relevant to a case I am dealing with, namely:
Trade: Puma Pilot
Rank Attained: Flt Lt
Enlisted Jun 2003 as DE Offr Cdt
Commissioned Nov 2007 as Plt Offr
Length of commissioning: 8 years*
2. *In particular, would you provide data for:*
 - *Average and median lengths of service for, separately:
RAF Puma pilots
RAF pilots
RAF officers*
 - *The average time taken to progress to each rank from commissioning/enlistment and percentage chance of promotion to each subsequent rank for an RAF Puma pilot/RAF pilot and RAF officer.*
 - *The percentage chances of serving from commissioning up to retirement age for RAF Puma pilots, RAF pilots and RAF officers: ideally displayed as a graph for the full period.*
 - *The specific data for length of service and promotion prospects for a Flt Lt Puma pilot with 8 years commissioned service up to retirement age.*
 - *Medical statistics, including percentages, for the number of RAF pilots who are medically discharged, by injury.*

I am treating your correspondence as a request for information under the Freedom of Information Act 2000 (FOIA).

As you have previously been informed via email sent to you on 08 August 2017, Defence Statistics (Air) can only provide detail to the level of all RAF Officers and RAF Pilots; we are unable to go down to

Rotary Wing or Puma Pilot level. The career projection information you have requested can be found in the Adobe (.pdf) file attached to the email.

Between 01 April 2014 and 31 March 2017, 13 UK RAF Pilots (trained and untrained) medically discharged. This is equivalent to <1% of the RAF pilot population over the time period.

Please note section 40(2) has been applied to some of the information in order to protect personal information as governed by the Data Protection Act 1998. Suppression methodology has been applied in order to reduce the possible inadvertent disclosure of individual identities. Section 40 is an absolute exemption and there is therefore no requirement to consider the public interest in making a decision to withhold the information.

Due to small numbers involved, we are not able to provide a list of all injuries and illnesses for which UK RAF Pilots were medically discharged over the period requested. Therefore only categories with numbers over five have been provided:

- Between 01 April 2014 and 31 March 2017, six UK RAF Pilots were medically discharged with a principal or contributory cause of Musculoskeletal Disorders and Injuries.
- Between 01 April 2014 and 31 March 2017, six UK RAF Pilots were medically discharged with a principal or contributory cause of Mental and Behavioural Disorders.

Please note that personnel may have both Musculoskeletal Disorders and Injuries and Mental and Behavioural Disorders listed as a cause of medical discharge, therefore personnel may be counted in both points.

Under section 16 of the Act (Advice and Assistance) you may find it useful to note:

Medical Discharge

Medical discharges due to Musculoskeletal Disorders and Injuries were identified as personnel who were medically discharged with a principal or contributory cause of discharge coded as M00 – M99 or S00 – T98 in the International Statistical Classification of Diseases and Related Health Problems Tenth Revision (ICD-10).

Medical discharges due to Mental and Behavioural Disorders were identified as personnel who were medically discharged with a principal or contributory cause of discharge coded as F00 – F99 in ICD-10.

Medical discharges are the result of a number of specialists (medical, occupational, psychological, personnel, etc.) coming to the conclusion that an individual is suffering from a medical condition that pre-empts their continued service in the Armed Forces. Statistics based on these discharges do not represent measures of true morbidity or pathology. At best they indicate a minimum burden of ill-health in the Armed Forces. Furthermore, the number and diversity of processes involved with administering a medical discharge introduce a series of time lags, as well as impact on the quality of data recorded.

If you have any queries regarding the content of this letter, please contact this office in the first instance.

If you wish to complain about the handling of your request, or the content of this response, you can request an independent internal review by contacting the Information Rights Compliance team, Ground Floor, MOD Main Building, Whitehall, SW1A 2HB (e-mail CIO-FOI-IR@mod.gov.uk). Please note that any request for an internal review should be made within 40 working days of the date of this response.

If you remain dissatisfied following an internal review, you may take your complaint to the Information Commissioner under the provisions of Section 50 of the Freedom of Information Act. Please note that the Information Commissioner will not normally investigate your case until the MOD internal review process has been completed. The Information Commissioner can be contacted at: Information Commissioner's Office, Wycliffe House, Water Lane, Wilmslow, Cheshire, SK9 5AF. Further details of the role and powers of the Information Commissioner can be found on the Commissioner's website at <https://ico.org.uk/>.

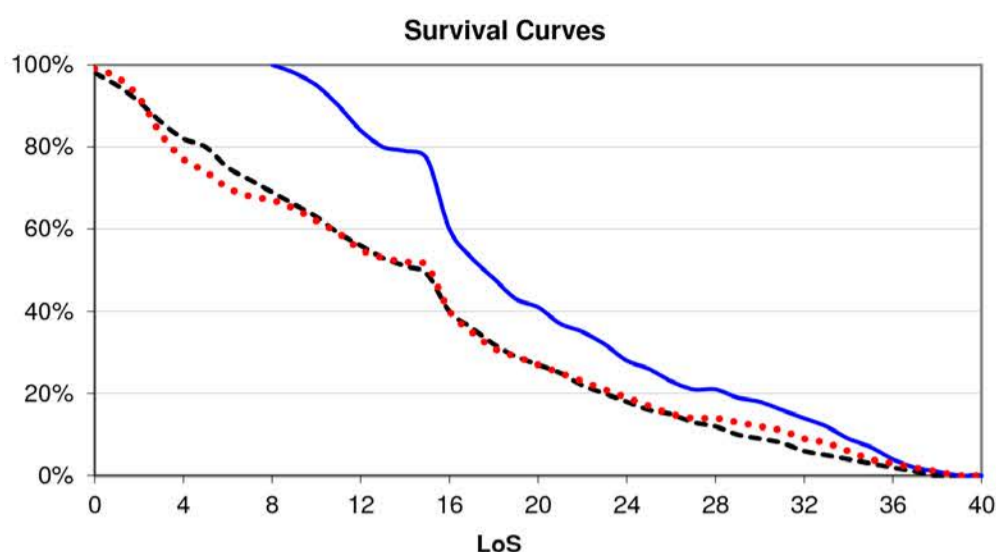
Yours sincerely,

Head of Defence Statistics (Air)

Would you like to be added to our contact list so we can consult with you if we are thinking about making any changes to the statistics we compile? Please register your interest by e-mailing defstrat-stat-air@mod.gov.uk

Career Projections for a New Entrant Officer, a New Entrant in the Pilot Branch and a Flight Lieutenant in the Pilot Branch with 8 years Length of Service

LoS ¹	All Officers New Entrant	Pilot New Entrant	Pilot Flt Lt 8 yrs LoS
	% chance of reaching LoS	% chance of reaching LoS	% chance of reaching LoS
0	98%	99%	
1	95%	97%	
2	91%	92%	
3	86%	83%	
4	82%	77%	
5	80%	74%	
6	75%	70%	
7	72%	68%	
8	69%	67%	100%
9	66%	65%	98%
10	63%	62%	95%
11	59%	59%	90%
12	56%	55%	84%
13	53%	53%	80%
14	51%	52%	79%
15	49%	51%	77%
16	40%	40%	60%
17	36%	35%	53%
18	32%	31%	48%
19	29%	29%	43%
20	27%	27%	41%
21	25%	25%	37%
22	22%	23%	35%
23	20%	21%	32%
24	18%	19%	28%
25	16%	17%	26%
26	15%	15%	23%
27	13%	14%	21%
28	12%	14%	21%
29	10%	13%	19%
30	9%	12%	18%
31	8%	11%	16%
32	6%	9%	14%
33	5%	8%	12%
34	4%	6%	9%
35	3%	4%	7%
36	2%	3%	4%
37	1%	2%	2%
38	0%	1%	1%
39	0%	0%	0%
40	0%	0%	0%



All Officers New Entrant	% chance of being promoted to subsequent ranks	% chance of promotion in to rank, having already achieved the preceding rank	Average total length of service on promotion in to rank
FLT LT	85%	85%	3 years 3 months
SQN LDR	43%	49%	10 years 3 months
WG CDR	17%	41%	15 years 9 months
GP CAPT	5%	27%	22 years 2 months
AIR CDRE +	2%	31%	27 years 0 months

Average Return of Service ²	18 years 4 months
Median Return of Service ²	17 years

Pilot New Entrant	% chance of being promoted to subsequent ranks	% chance of promotion in to rank, having already achieved the preceding rank	Average total length of service on promotion in to rank
FLT LT	81%	81%	3 years 5 months
SQN LDR	26%	37%	11 years 11 months
WG CDR	12%	42%	17 years 3 months
GP CAPT	5%	44%	23 years 1 month
AIR CDRE +	3%	56%	27 years 10 months

Average Return of Service ²	17 years 7 months
Median Return of Service ²	15 years

Pilot Flt Lt 8 yrs LoS	% chance of a Flt Lt being promoted to subsequent ranks	% chance of promotion in to rank, having already achieved the preceding rank	Average total length of service on promotion in to rank
FLT LT	100%	99%	
SQN LDR	38%	38%	12 years 7 months
WG CDR	18%	42%	17 years 6 months
GP CAPT	8%	44%	23 years 3 months
AIR CDRE +	4%	56%	27 years 10 months

Average Return of Service ²	20 years 7 months
Median Return of Service ²	17 years

¹ LoS 'x' means 'LoS greater than or equal to x but less than x+1'. So 'LoS21', for example, is the chance of personnel serving more than or equal to 21 years but less than 22 years. For these stats, the Pilot Flt Lt 8 years LoS equates to 8 years from commissioning date.

² Average Return of Service is the average length of service on exit and Median Return of Service is the median length of service on exit; they consider the branch(es) as a whole and are not specific to rank or LoS. Results for New Entrants include untrained personnel in addition to the trained personnel used to calculate the Flt Lt Returns of Service.

Notes:

- These data are based on the seven year span of actual data 2010/11 – 2016/17. By considering a cohort of individuals with the similar characteristics - **New Entrants** in **All** branches, **New Entrants** in the **Pilot** branch and **Flt Lts** in the **Pilot** branch with **8 years** length of service - average career projections have been calculated.
- Defence Statistics' career forecasts are not based on the actual experience of any one individual, but rather are based on the historical behaviour of individuals with similar characteristics.