

[redacted] REP 85[085]

[redacted]  
[redacted]  
4-10-16

I wrote 2-10-16  
but realize on checking  
the copy of my letter,  
I omitted to reference  
it. It was from Giles Scott

It relates to

LLANBRYNMAIR

o CARNEDD WEN

Wind<sup>vs</sup> applications in  
Dales.

I object to both

[redacted] - on behalf of  
the CEFN CROES ACTION GROUP

October 2<sup>nd</sup> 2016

Energy Infrastructure Planning Team,  
Dept. of Business, Energy, & Industrial Strategy,  
Area C, 4<sup>th</sup> Floor,  
3, Whitehall Place,  
London SW1A 2AD

Dear Madam/Sir,

Thank you for your letter dated 20-9-16.  
It is profoundly depressing that after 20 years campaigning  
against wind turbines in the Caubrian Mountains I am  
still counting letters of protest. I was hopeful that the  
message had finally been accepted by decision & policy  
makers - viz:

① Remote upland sites represent a precious and  
FINITE resource for the whole of Great Britain. No one  
is making any more landscapes like these! They need  
protection for future generations to enjoy - not violation.  
② Amongst right thinking people, who have  
carefully studied all the issues, land based wind developments,  
located from where the electricity is to be used, are now  
regarded as an unnecessary technology and hugely damaging  
due to the infrastructure: concrete filled excavations, new roads,  
substations, overhead power lines etc.

③ RES UK - Ireland need to accept that their  
plans are out of time. The country & public opinion have  
moved on.

Don't knock the Heart out of Mid Wales.  
Please reject this time expired reapplication:  
Your faithfully,  
Cefn crees  
Action Group

[redacted]  
My archives recording  
the construction of Cefn  
Croes & its aftermath are  
now being deposited in  
The Ceredigion County  
Archives & The National  
Library of Wales.

Here are a few  
sample photos. I have  
thousands. Let me know  
if any more would be  
helpful.

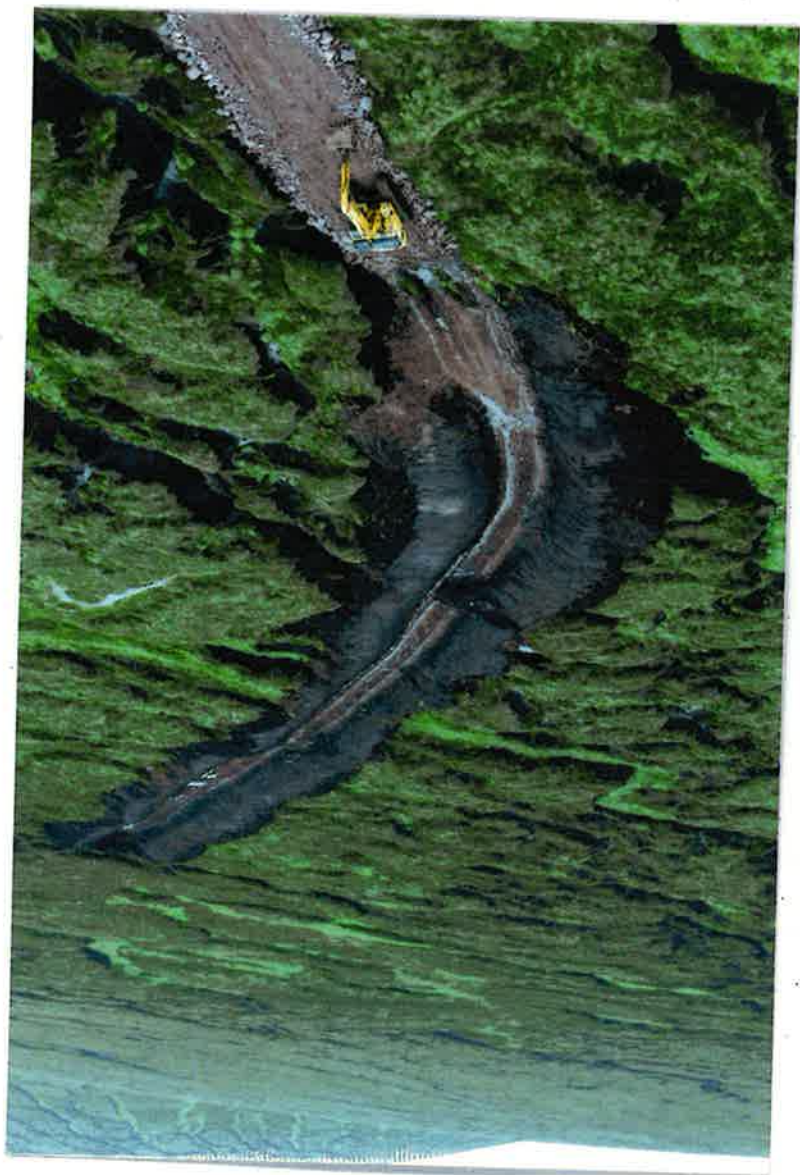
[redacted]  
Sept. 2016

Peat damage.

Scottish flow country as new  
access roads opened up

2003





2004

Braes o' Duone  
Dev. — Scotland.

Devastating peat damage  
as new access roads for  
Wind turbines opened up  
across upland boggy areas  
— a rare habitat —

Cefn Cwes 2004

Concrete making factory on site  
(not part of original planning application)  
40 lorry loads for each turbine foundation  
required





Peat damage - a rare & precious  
component of upland habitats, sequestering  
huge amounts of CO<sub>2</sub>, methane,  
& absorbing high rainfall.

Celia Cross 2004

Clear-felling in advance of  
turbine erection.  
Crane in distance

Cefn Cwes 2004





Cefn Cnos 2004  
Peat damage

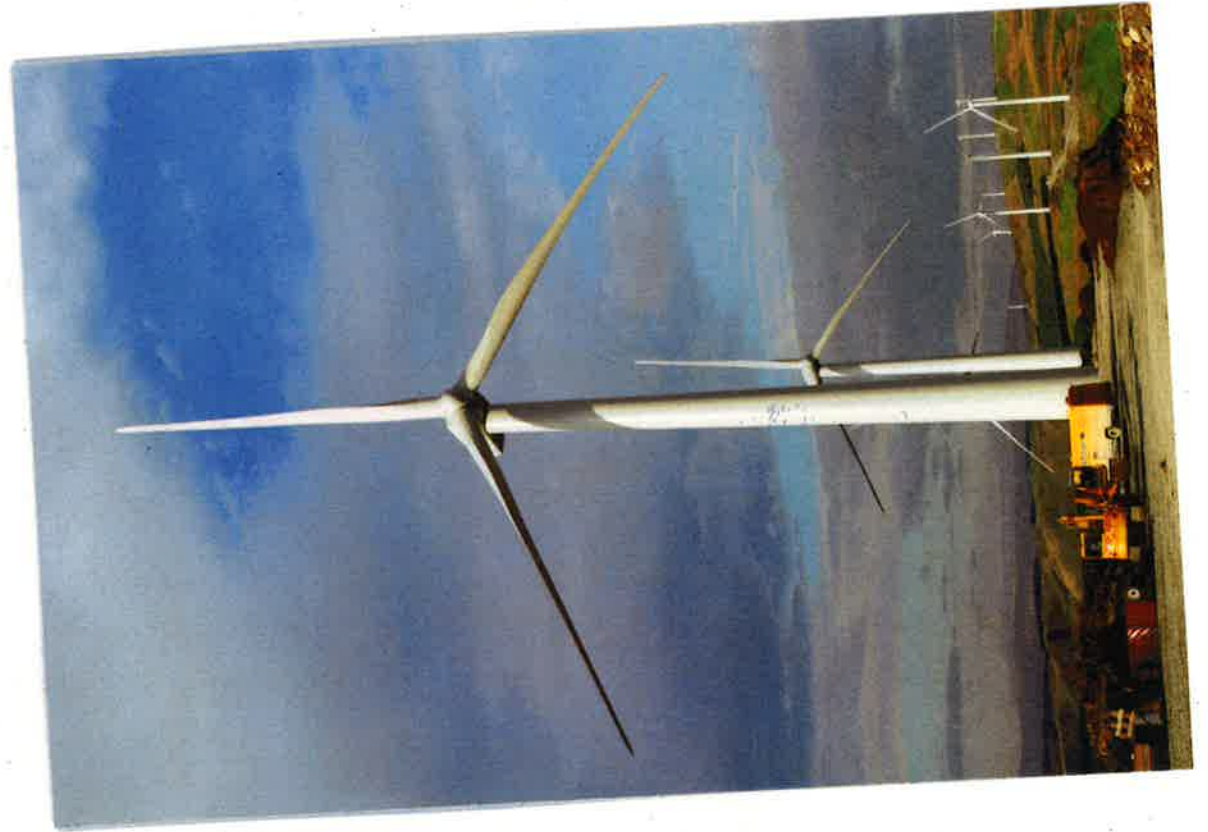
HKC



Cefn Coes 2004

Turbine 14, + looking  
north towards Pumlumon

Support vehicles demonstrate  
the scale.



HKL

Cefn Cwes under construction  
2004

Sub-station, new access road  
Turbines 1-6 of 39  
awaiting blades

HKL





Access road from Hwy 144 to  
Cedar Cuts plateau  
Top left 1st turbines seen above  
clear-felled had for overland  
powerlines & pylons.  
2004