



PHE Influenza Surveillance graphs

- Influenza activity in the United Kingdom is monitored using a variety of [surveillance systems](#). The [National Influenza Report](#) which interprets the data is published weekly.
- National and subnational outputs from the various surveillance systems are grouped according to the following categories:
 - [Community influenza surveillance](#)
 - [Influenza-like illness GP consultation rates](#)
 - [Influenza-confirmed hospitalisations](#)
 - [All-cause mortality](#)
 - [Microbiological surveillance](#)
 - [Influenza vaccination](#)

Respiratory Diseases Department

Centre for Infectious Disease Surveillance and Control

Public Health England

respcidsc@phe.gov.uk

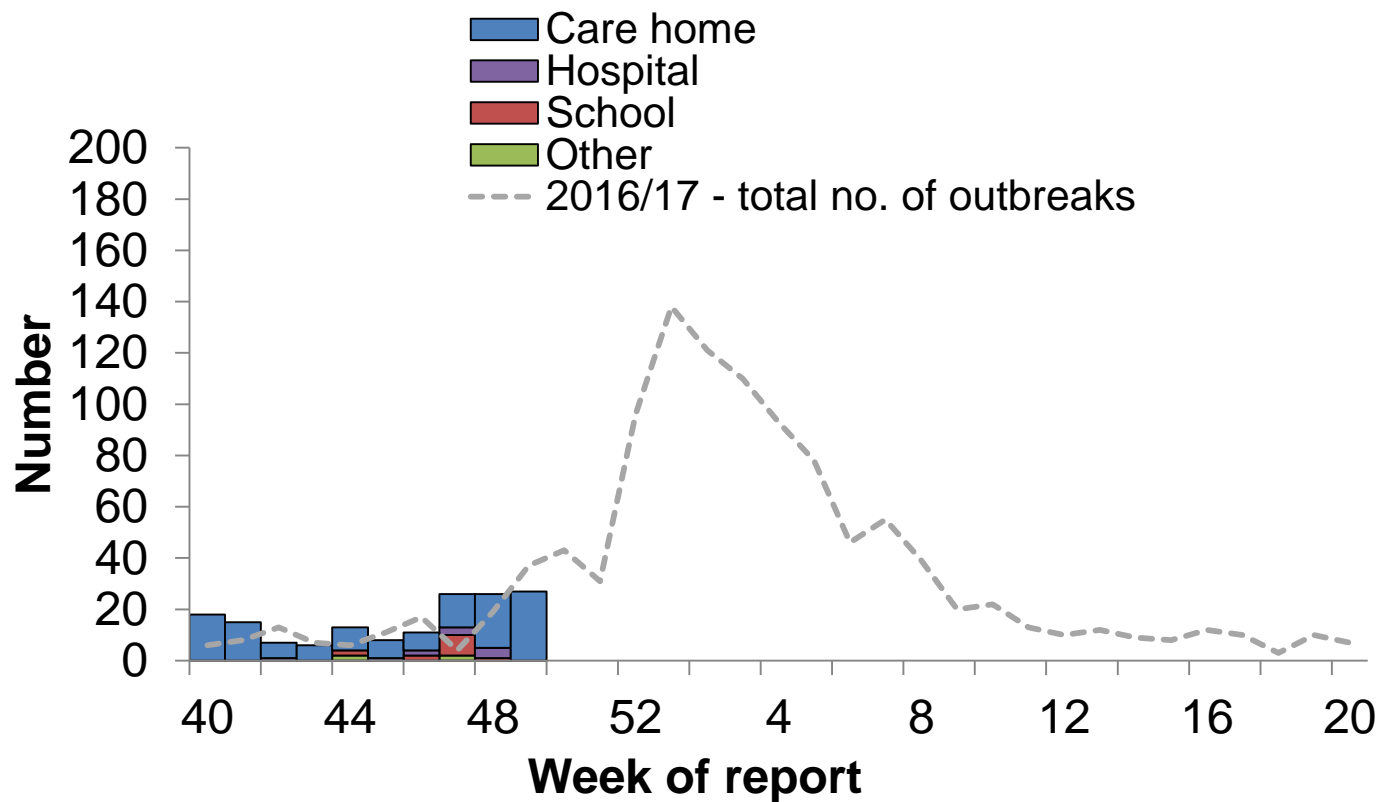


Public Health
England

Community influenza surveillance



Number of acute respiratory outbreaks by institution, UK





Number of acute respiratory outbreaks by PHE Region

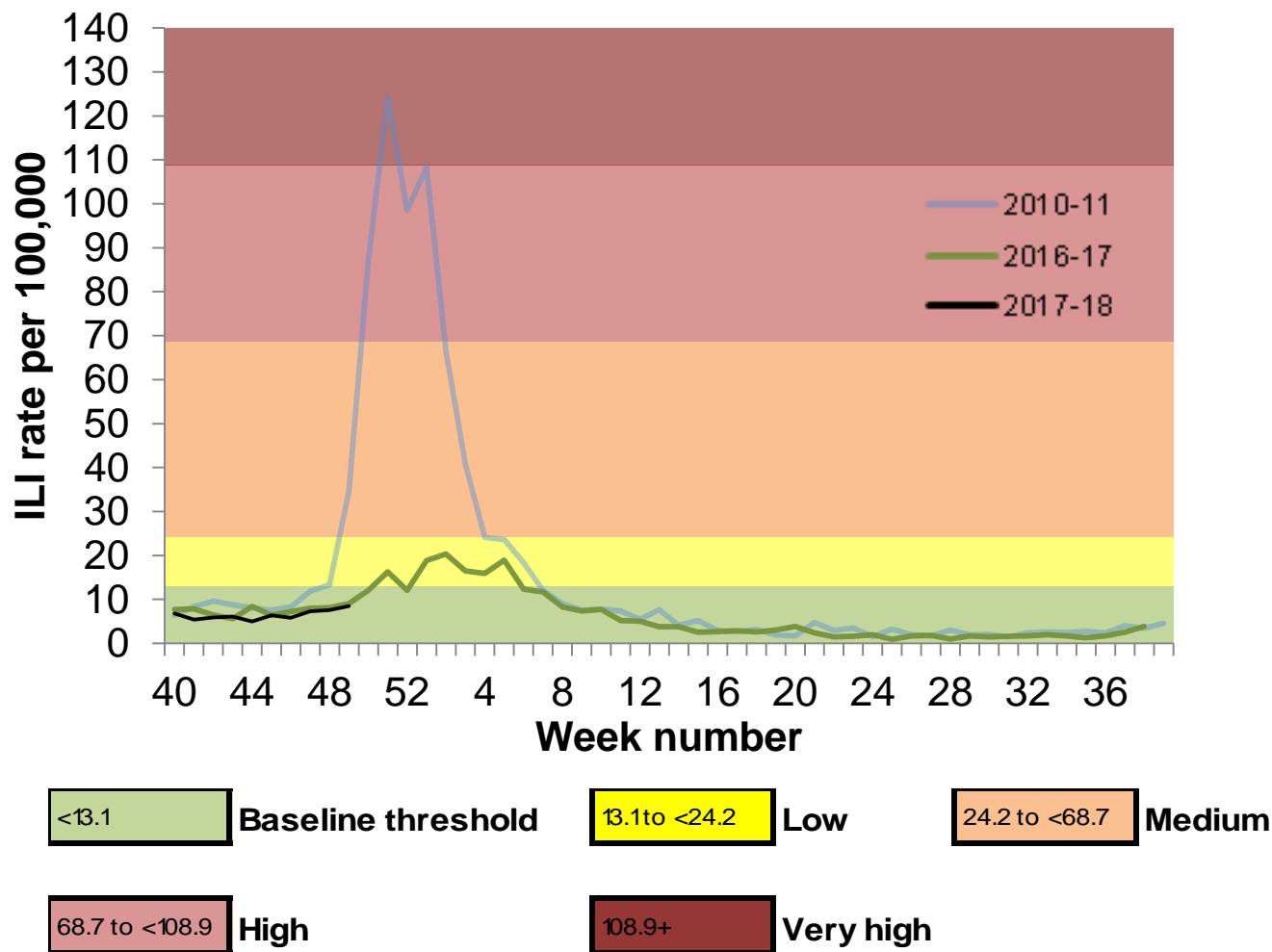
	Outbreaks reported in week 49	Cumulative number of outbreaks since week 40
PHE North of England	3	41
PHE Midlands and East of England	9	52
PHE London	0	6
PHE South of England	12	42



Influenza-like illness GP consultation rates



RCGP ILI consultation rate, England





GP ILI consultations in the UK for all ages with MEM thresholds applied

GP ILI consultation rates (all ages)	Week number																
	40	41	42	43	44	45	46	47	48	49	50	51	52	1	2	3	4
England (RCGP)	6.8	5.4	5.9	6.1	5.0	6.4	5.9	7.3	7.6	8.5							
Wales	5.7	6.5	6.6	5.4	5.0	5.4	6.2	6.4	5.9	8.9							
Scotland	10.1	15.3	8.3	10.8	12.4	11.7	10.3	9.1	9.4	15.1							
Northern Ireland	3.4	3.9	3.7	3.3	4.0	3.6	4.5	5.3	4.0	8.2							

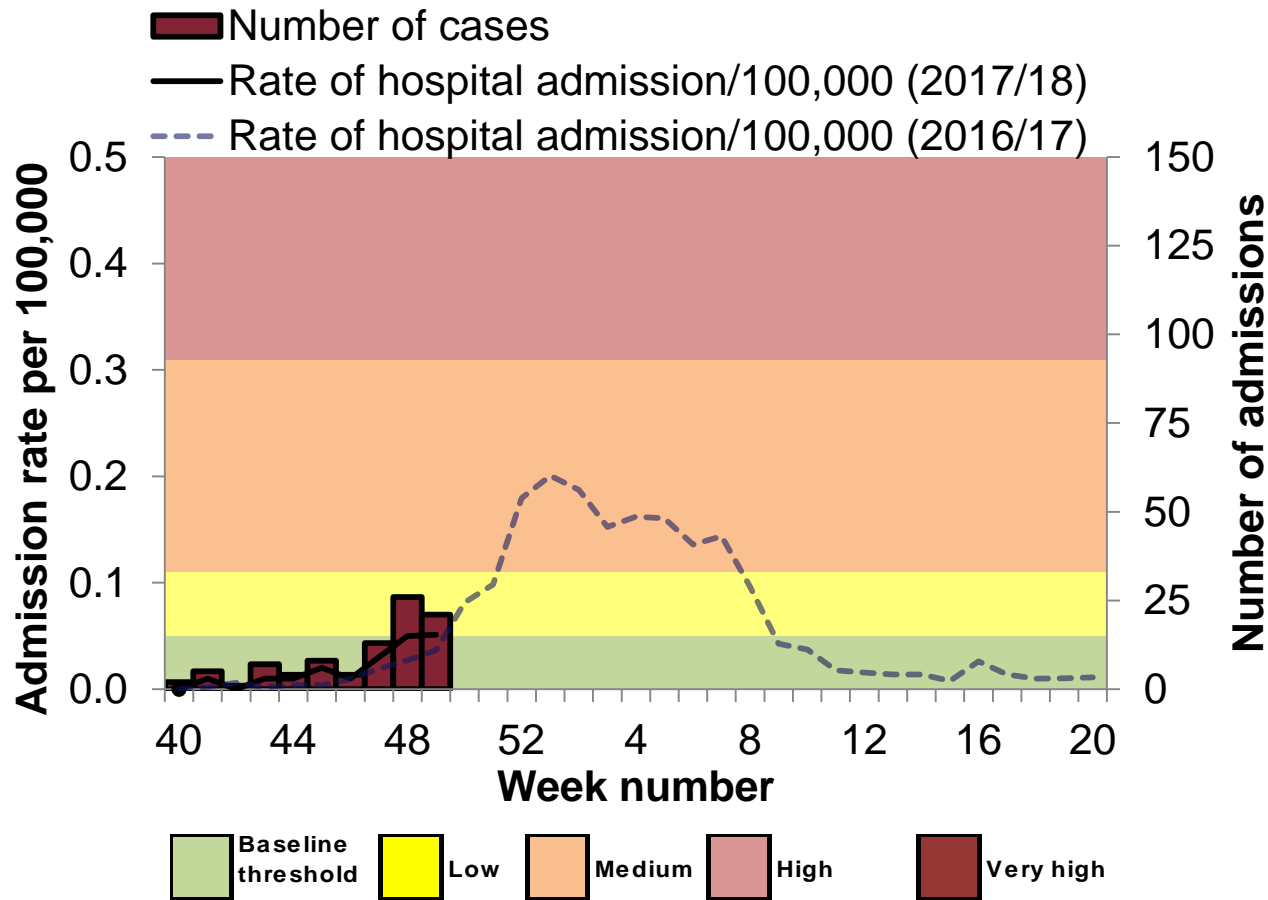
**The Moving Epidemic Method (MEM) has been adopted by the European Centre for Disease Prevention and Control to calculate thresholds for GP ILI consultations for the start of influenza activity (based on 10 seasons excluding 2009/10), in a standardised approach across Europe. For MEM threshold values for each country, please visit: <https://www.gov.uk/guidance/sources-of-uk-flu-data-influenza-surveillance-in-the-uk#clinical-surveillance-through-primary-care> .*



Influenza-confirmed hospitalisations



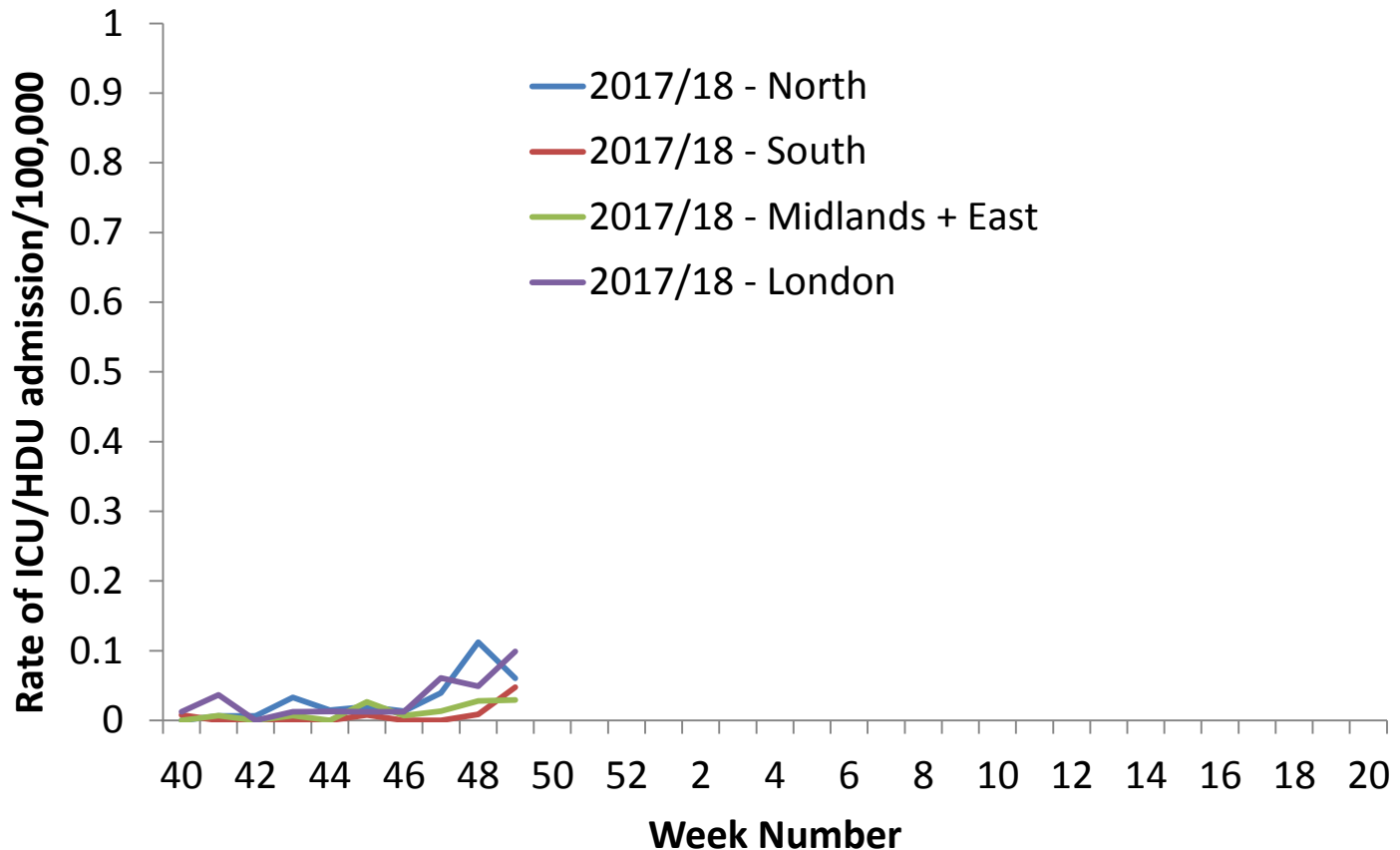
Weekly ICU/HDU influenza admission rate per 100,000 trust catchment population , England, since week 40 2017



*The Moving Epidemic Method (MEM) has been adopted by the European Centre for Disease Prevention and Control to calculate thresholds for ICU/HDU admission rates for the start of influenza activity (based on 6 seasons) in a standardised approach across Europe. For MEM threshold values, please visit: <https://www.gov.uk/guidance/sources-of-uk-flu-data-influenza-surveillance-in-the-uk#disease-severity-and-mortality-data>

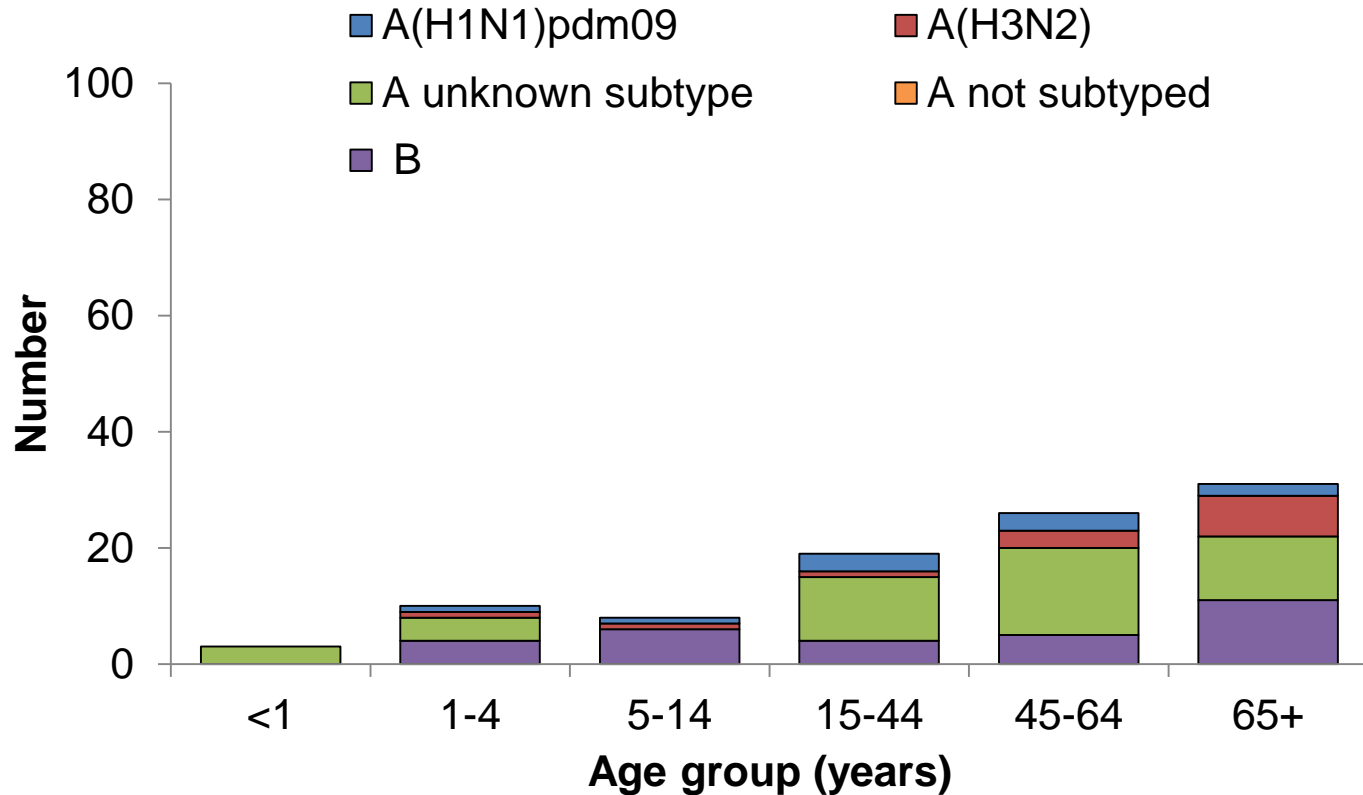


Weekly ICU/HDU influenza admission rate per 100,000 trust catchment population by PHE region, since week 40 2017



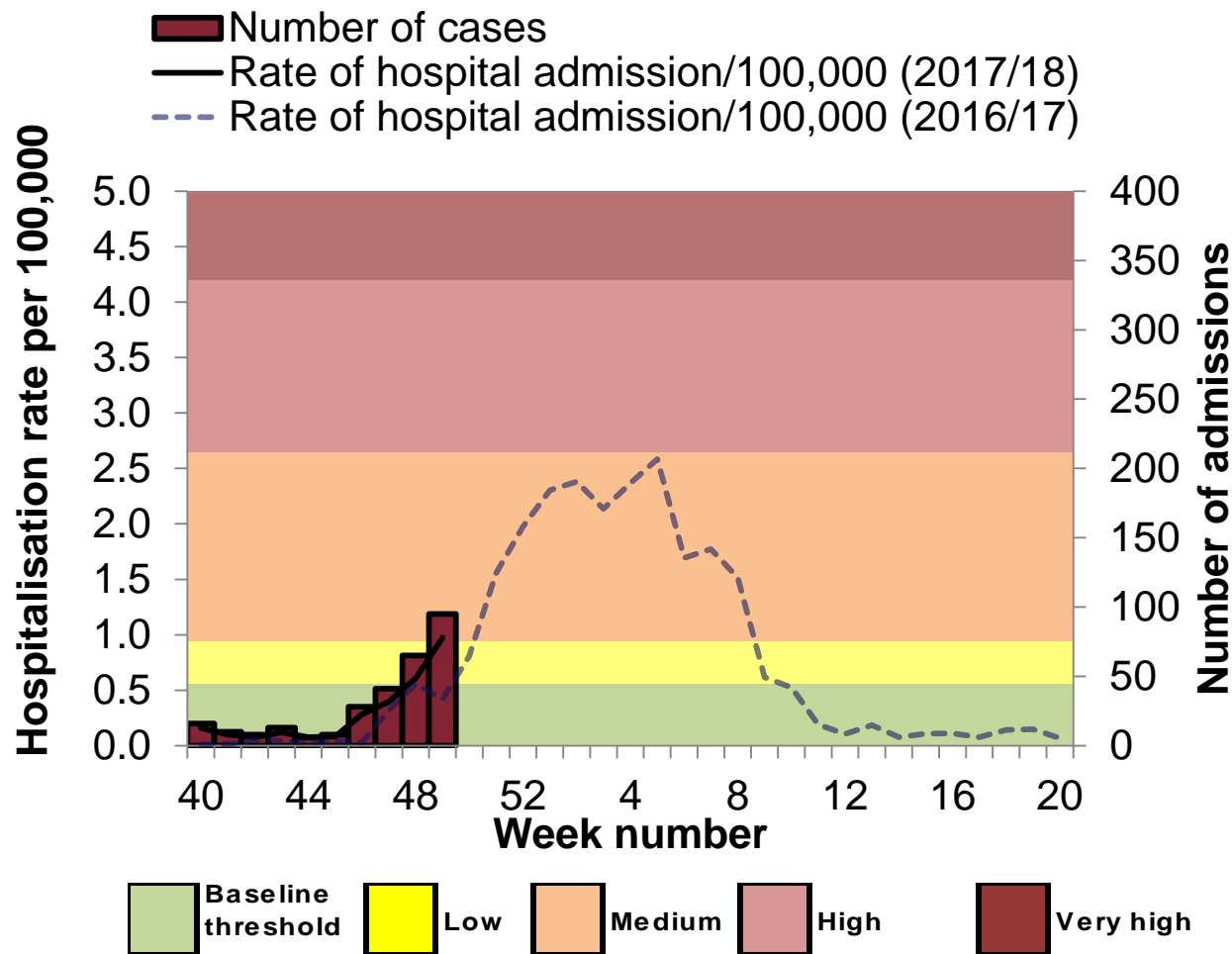


Influenza confirmed ICU admissions (USISS mandatory) by age and influenza subtype, since week 40 2017





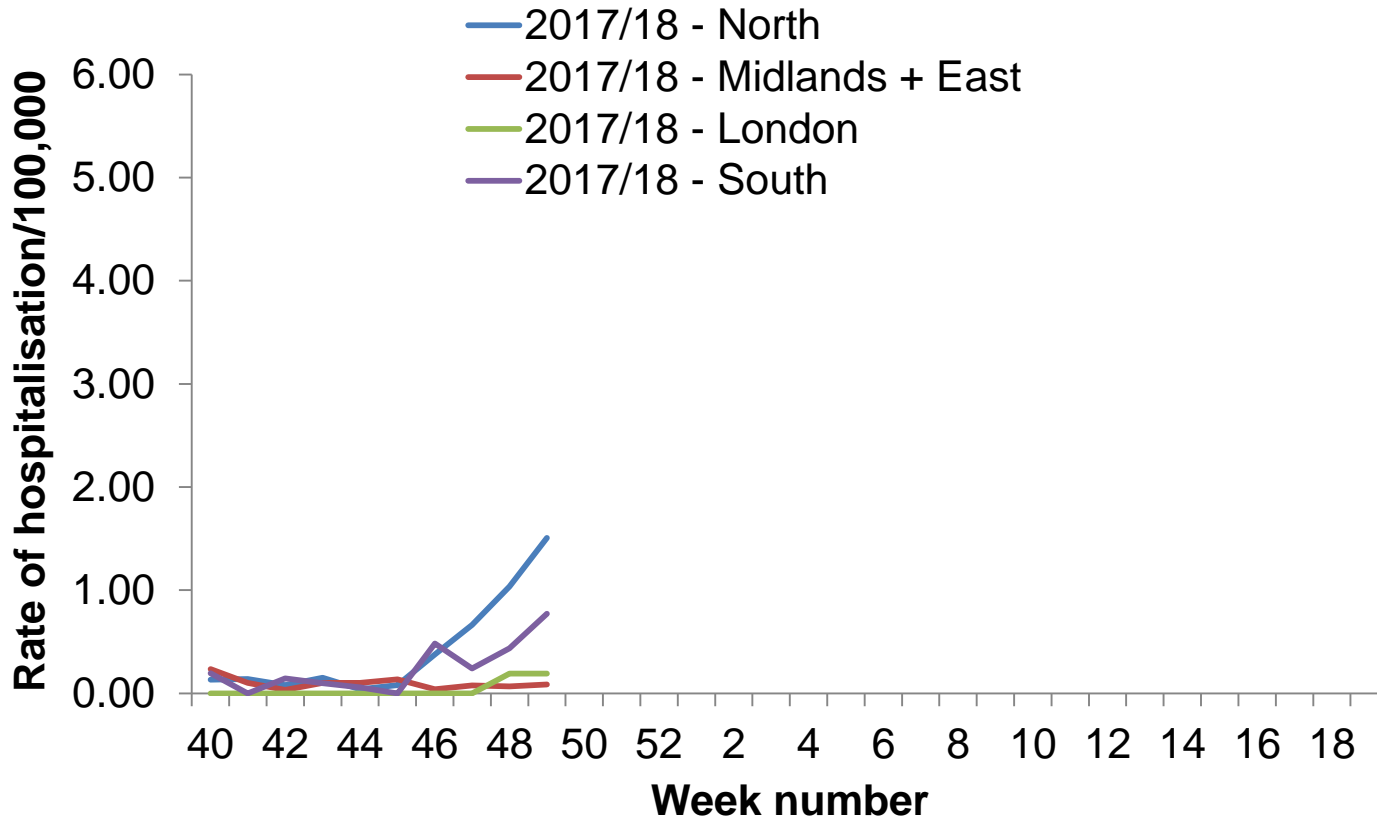
Weekly hospitalised influenza case rate per 100,000 trust catchment population , England, since week 40 2017



*The Moving Epidemic Method (MEM) has been adopted by the European Centre for Disease Prevention and Control to calculate thresholds for ICU/HDU admission rates for the start of influenza activity (based on 6 seasons) in a standardised approach across Europe. For MEM threshold values, please visit: <https://www.gov.uk/guidance/sources-of-uk-flu-data-influenza-surveillance-in-the-uk#disease-severity-and-mortality-data>



Weekly hospitalised influenza admission rate per 100,000 trust catchment population by PHE region, since week 40 2017

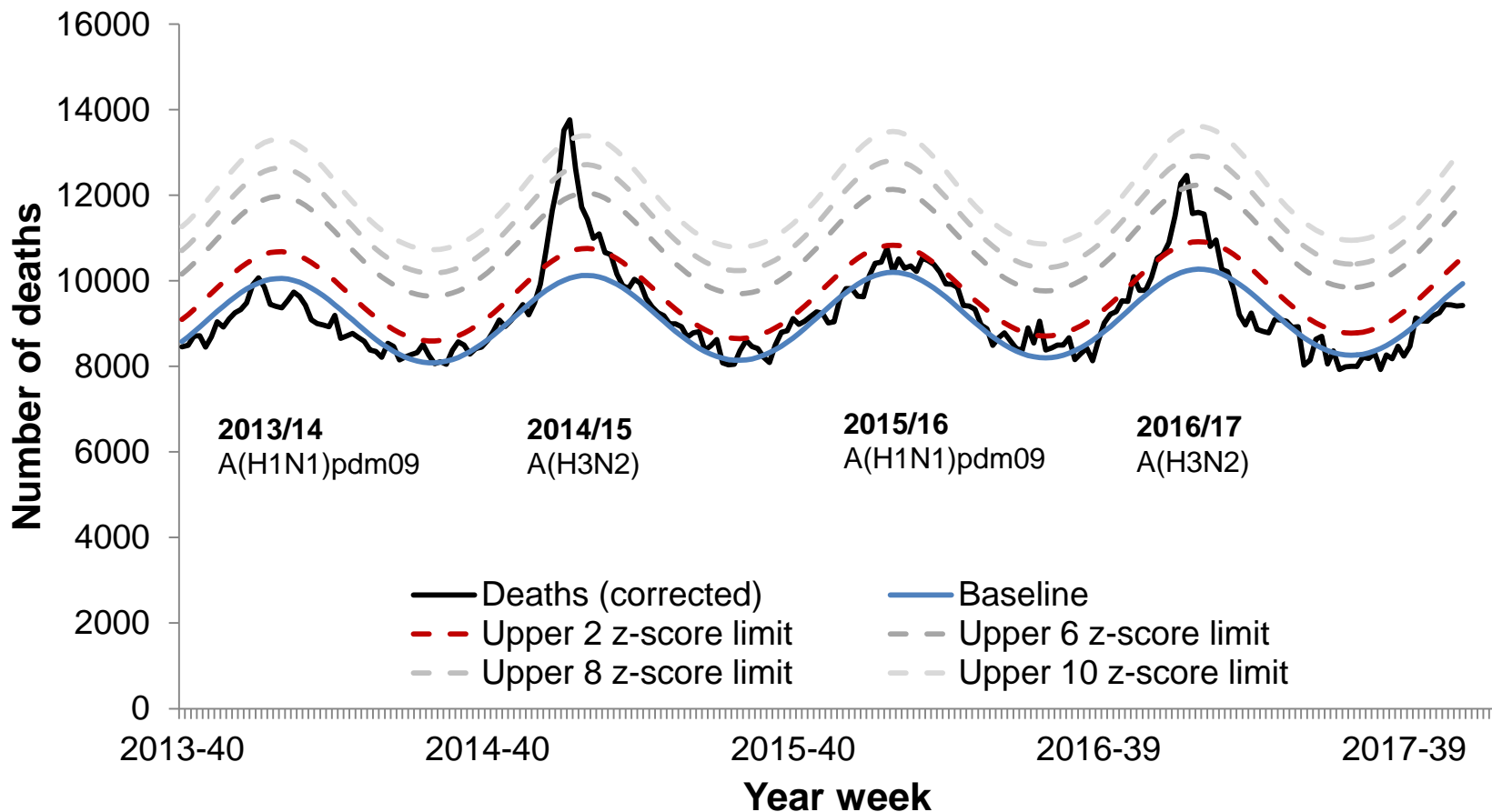




All-cause mortality

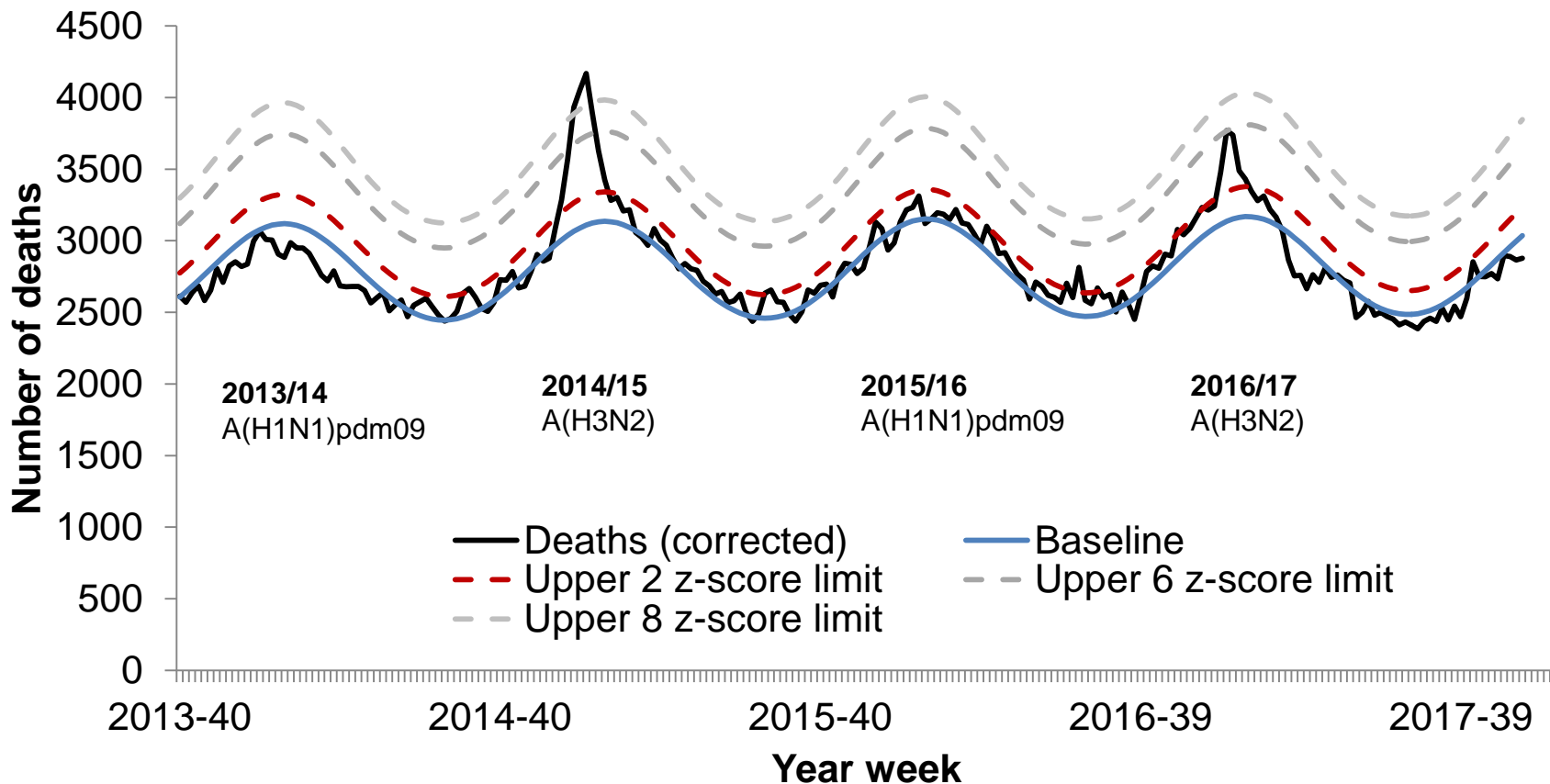


Excess mortality (all causes) by week of death through the EuroMOMO algorithm in all ages, England



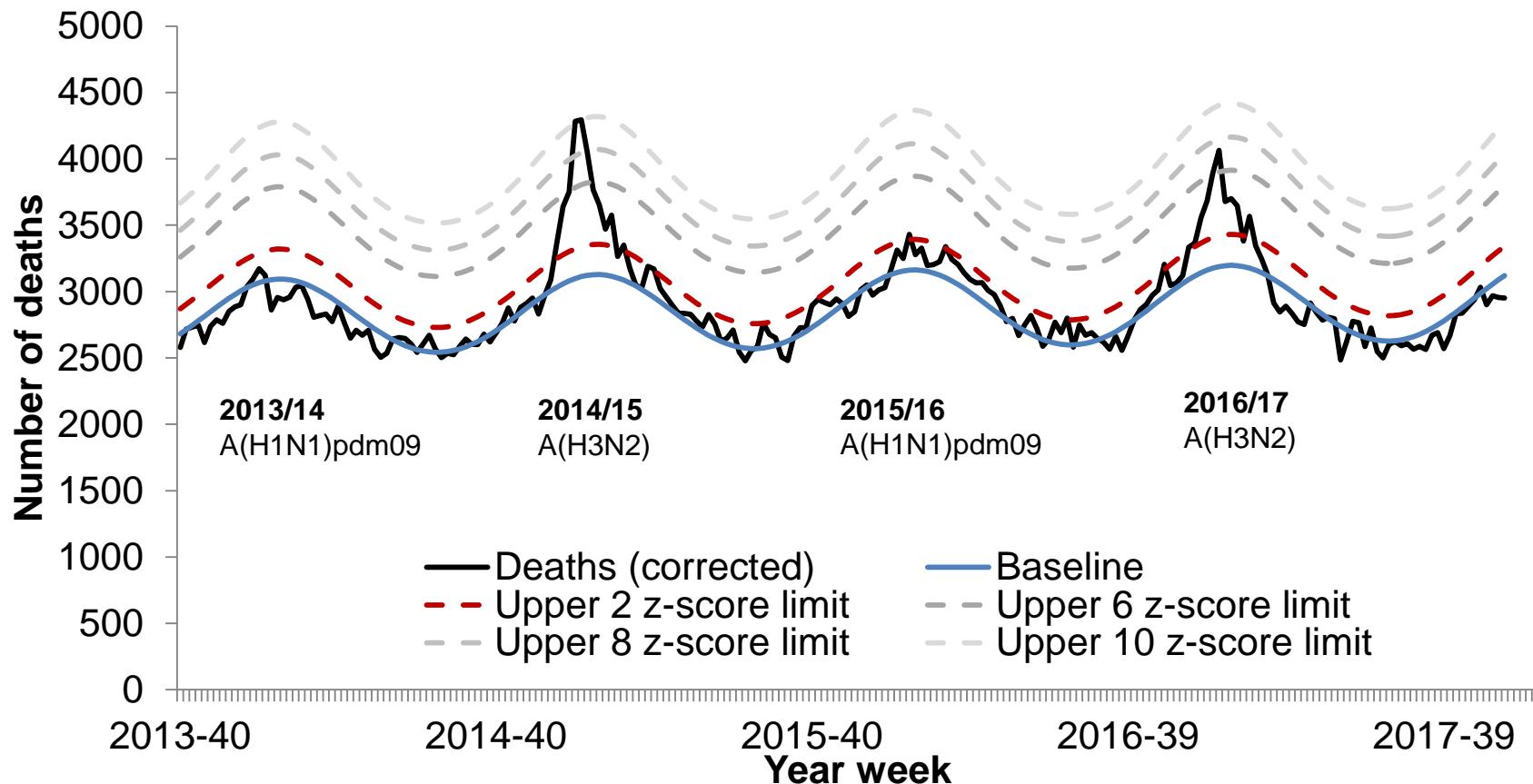


Excess mortality (all causes) by week of death through the EuroMOMO algorithm in all ages, PHE North of England



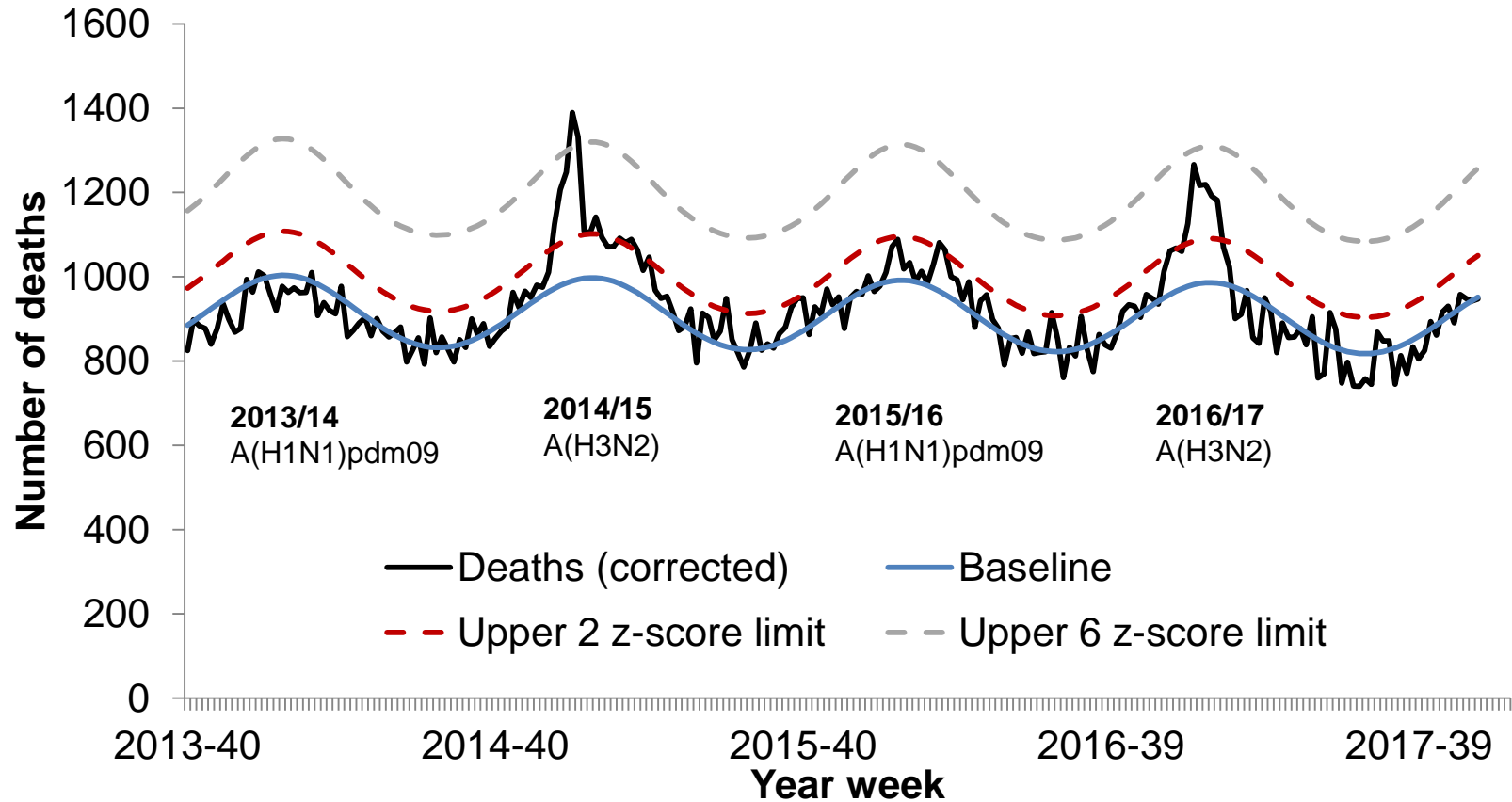


Excess mortality (all causes) by week of death through the EuroMOMO algorithm in all ages, PHE Midlands and East of England



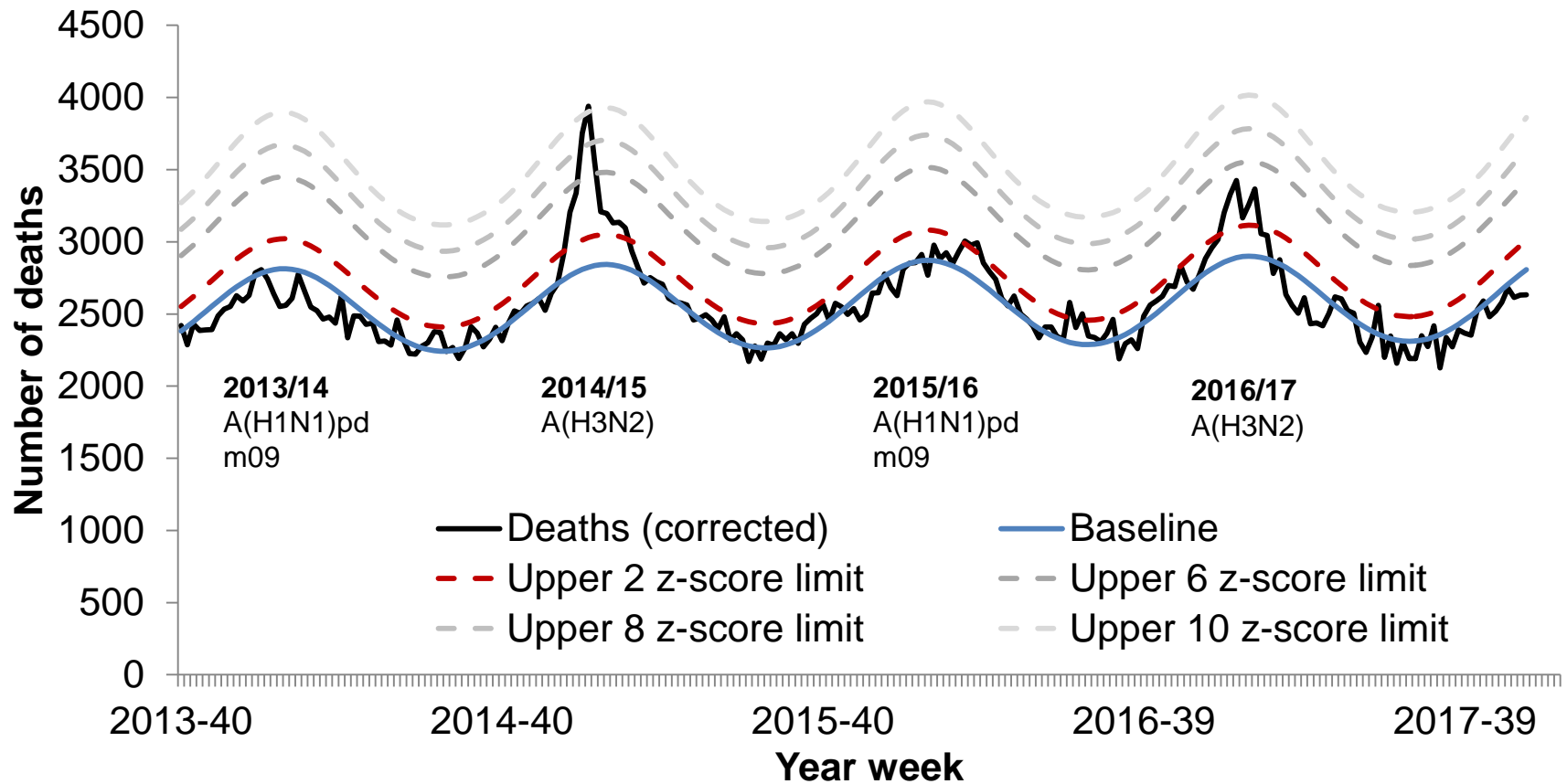


Excess mortality (all causes) by week of death through the EuroMOMO algorithm in all ages, PHE London





Excess mortality (all causes) by week of death through the EuroMOMO algorithm in all ages, PHE South of England

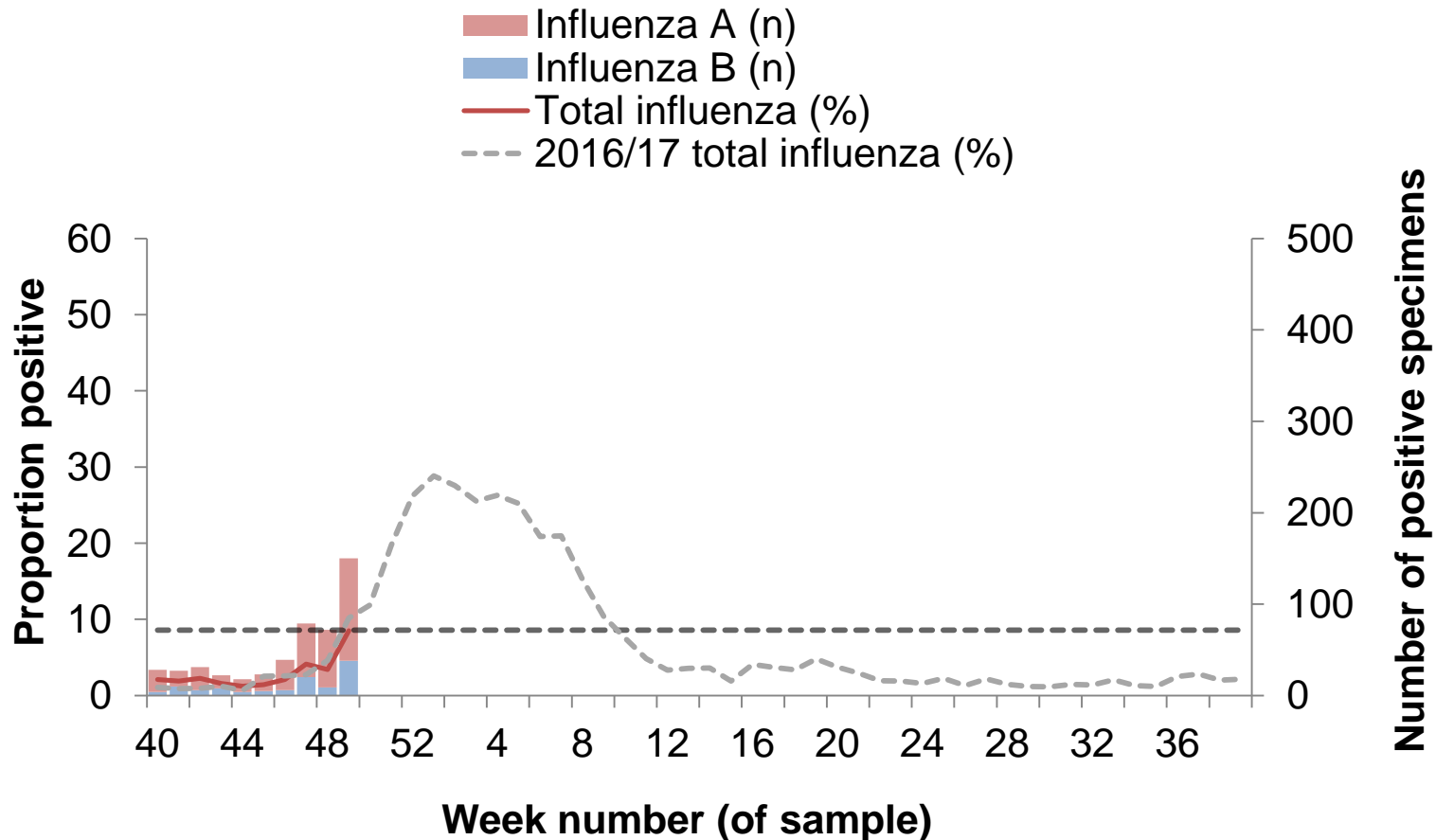




Microbiological surveillance

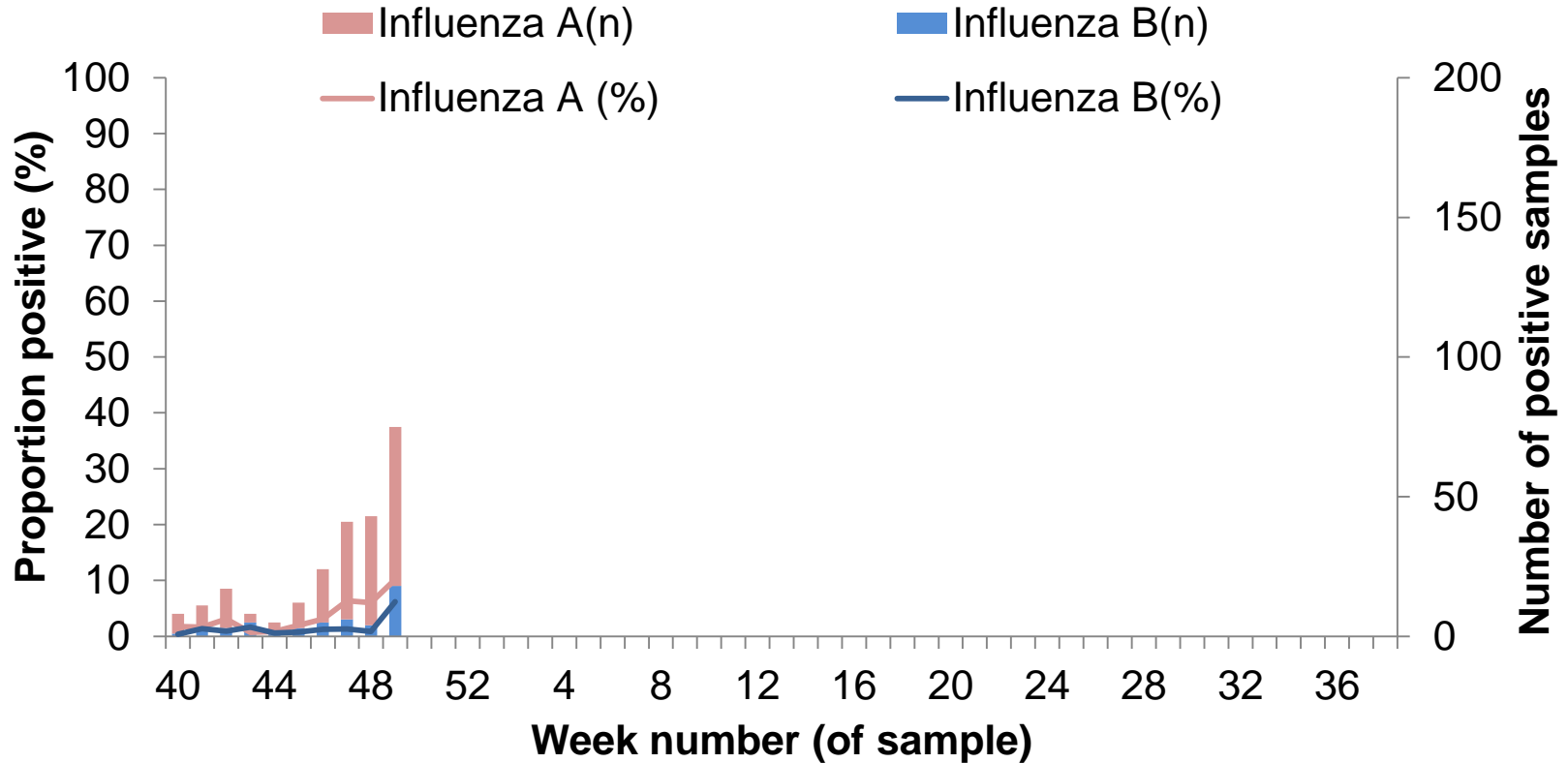


DataMart: Number and proportion of samples positive for influenza, by type, England



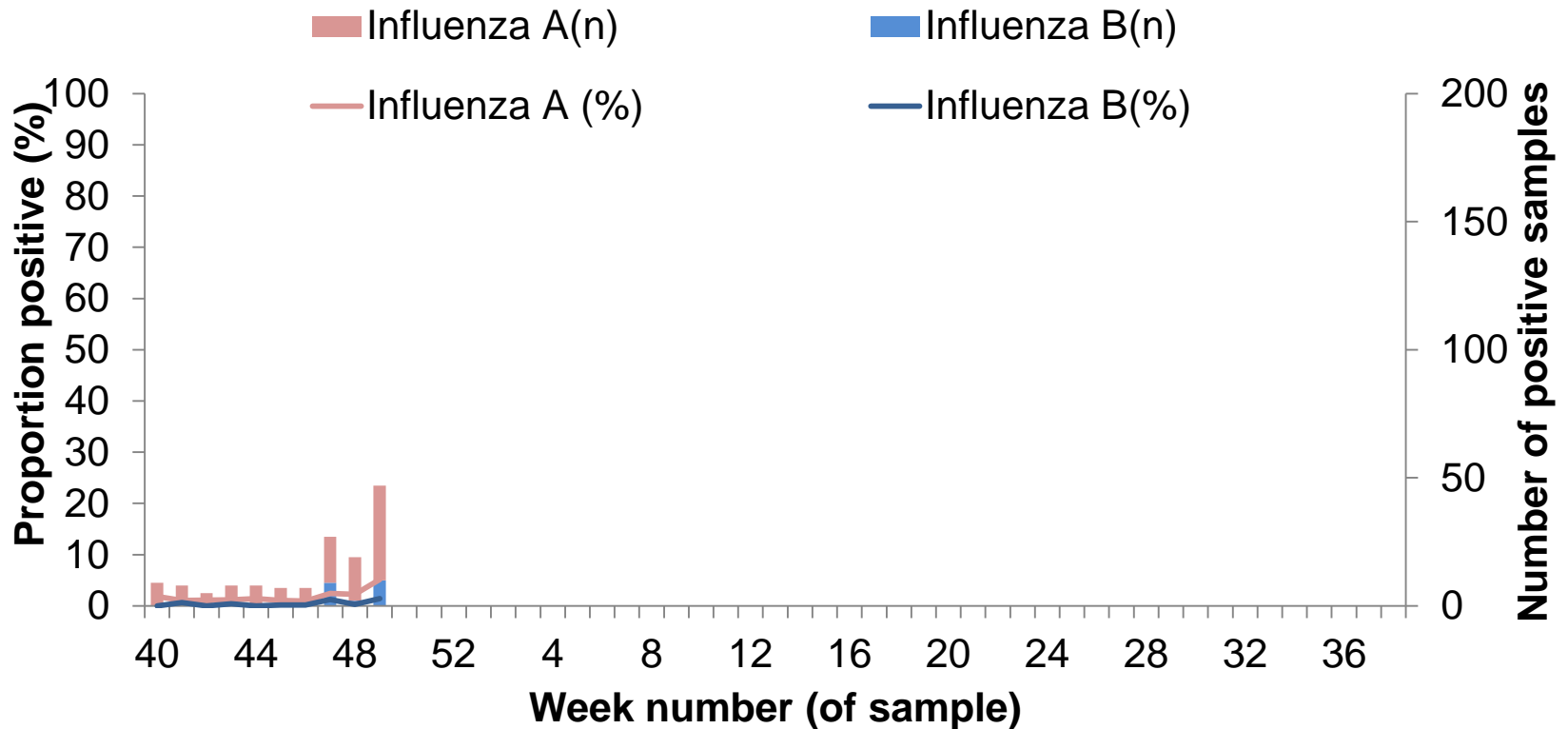


DataMart: Number and proportion of samples positive for influenza, by type, PHE North of England



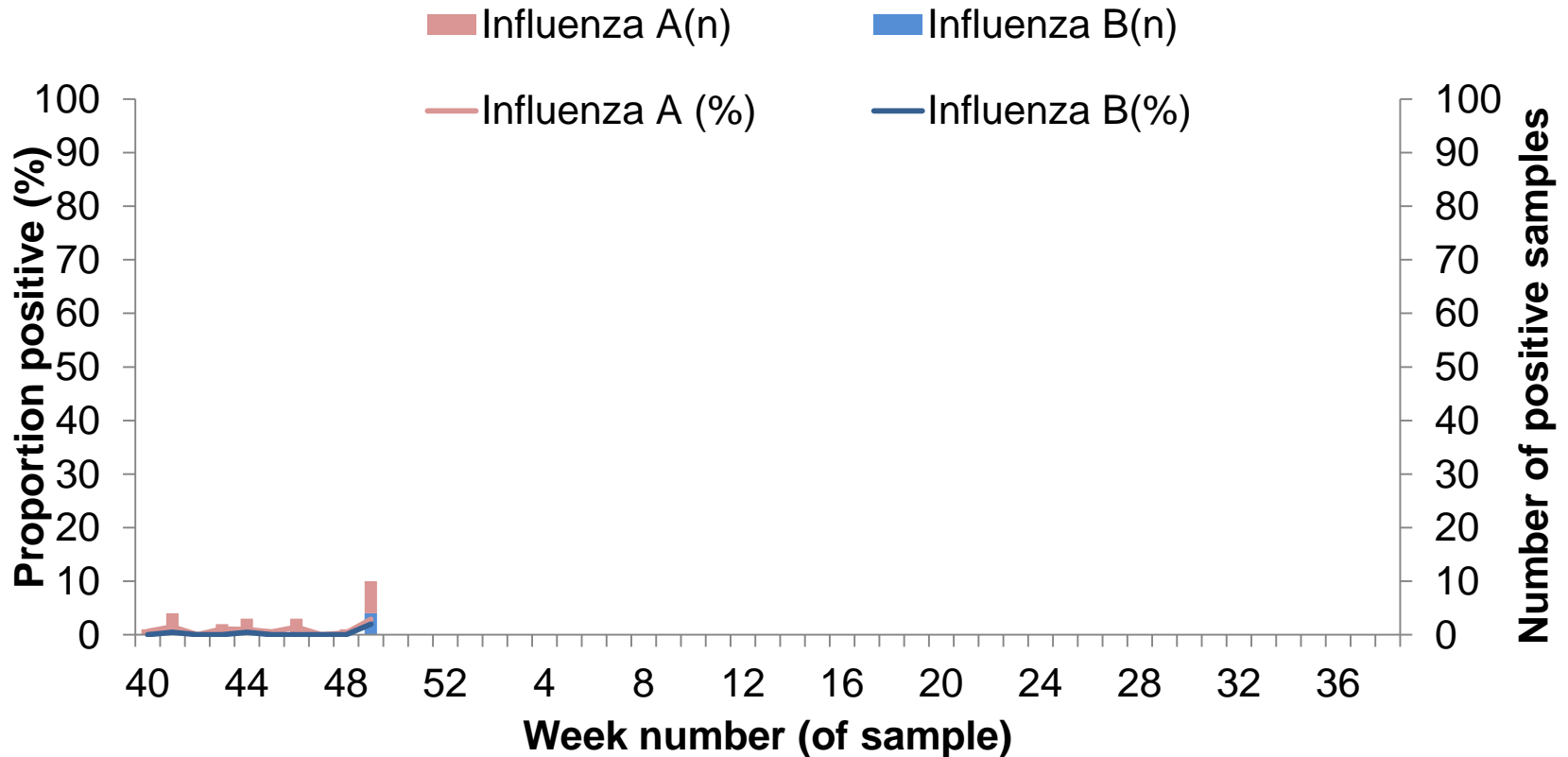


DataMart: Number and proportion of samples positive for influenza, by type, PHE Midlands and East of England



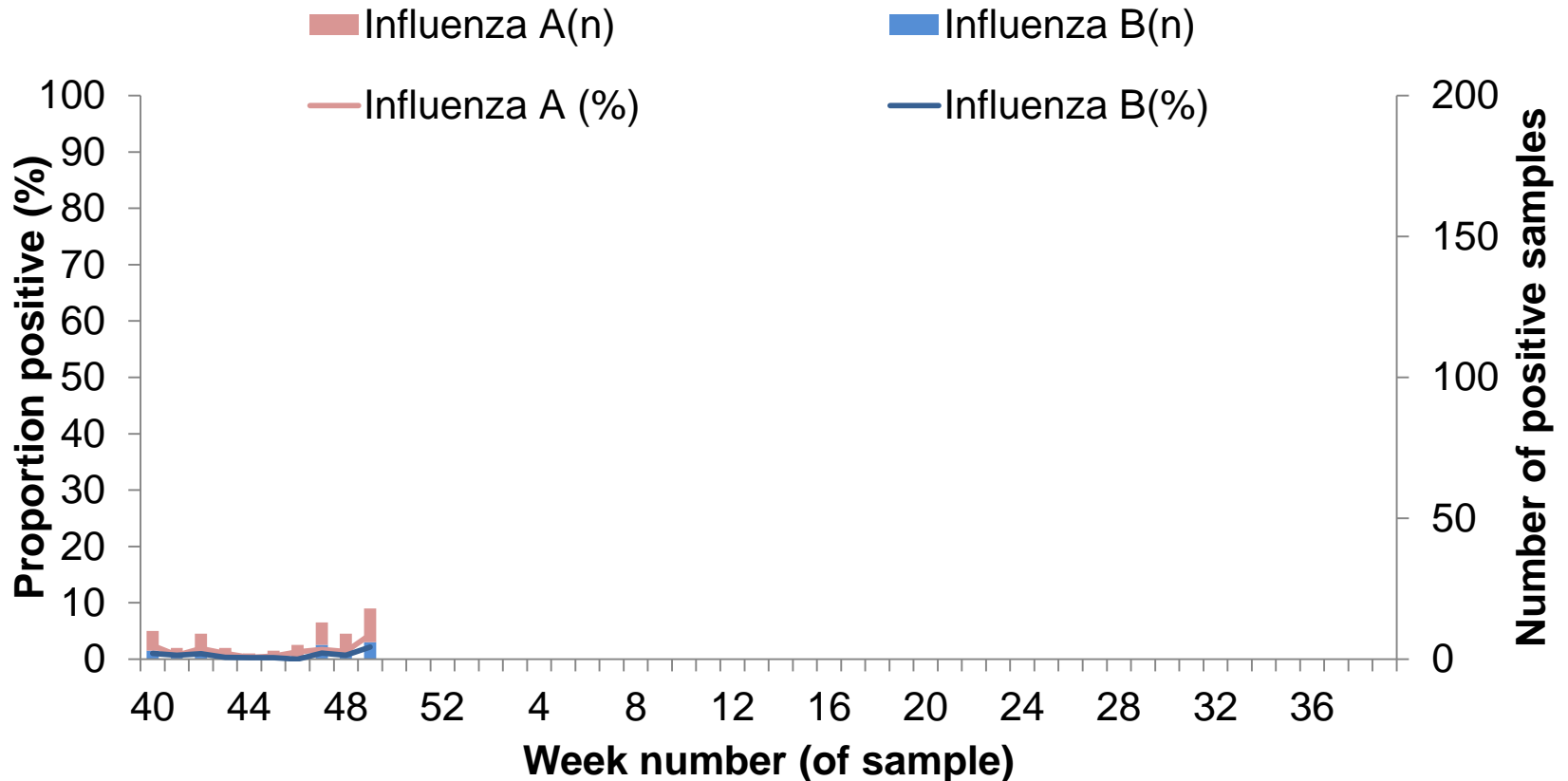


DataMart: Number and proportion of samples positive for influenza, by type, PHE London



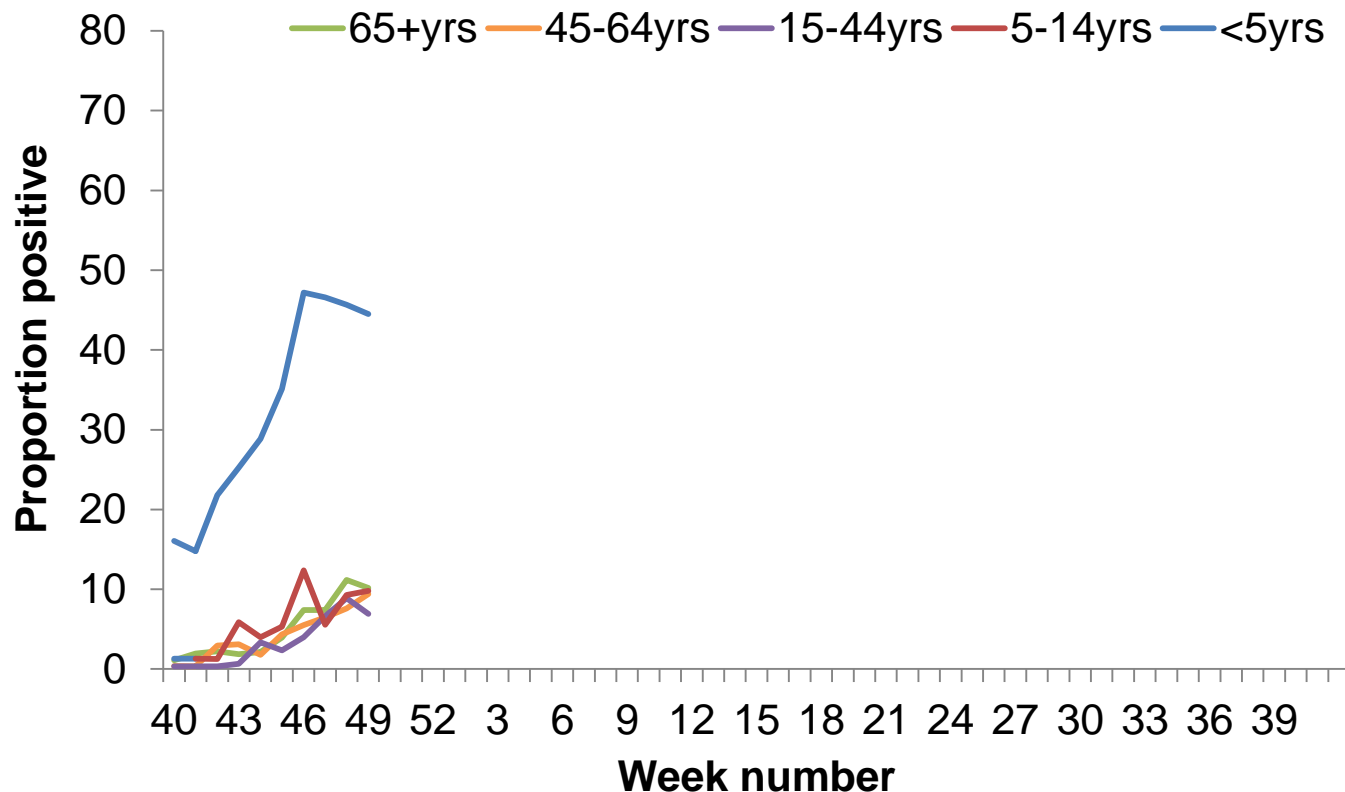


DataMart: Number and proportion of samples positive for influenza, by type, PHE South of England



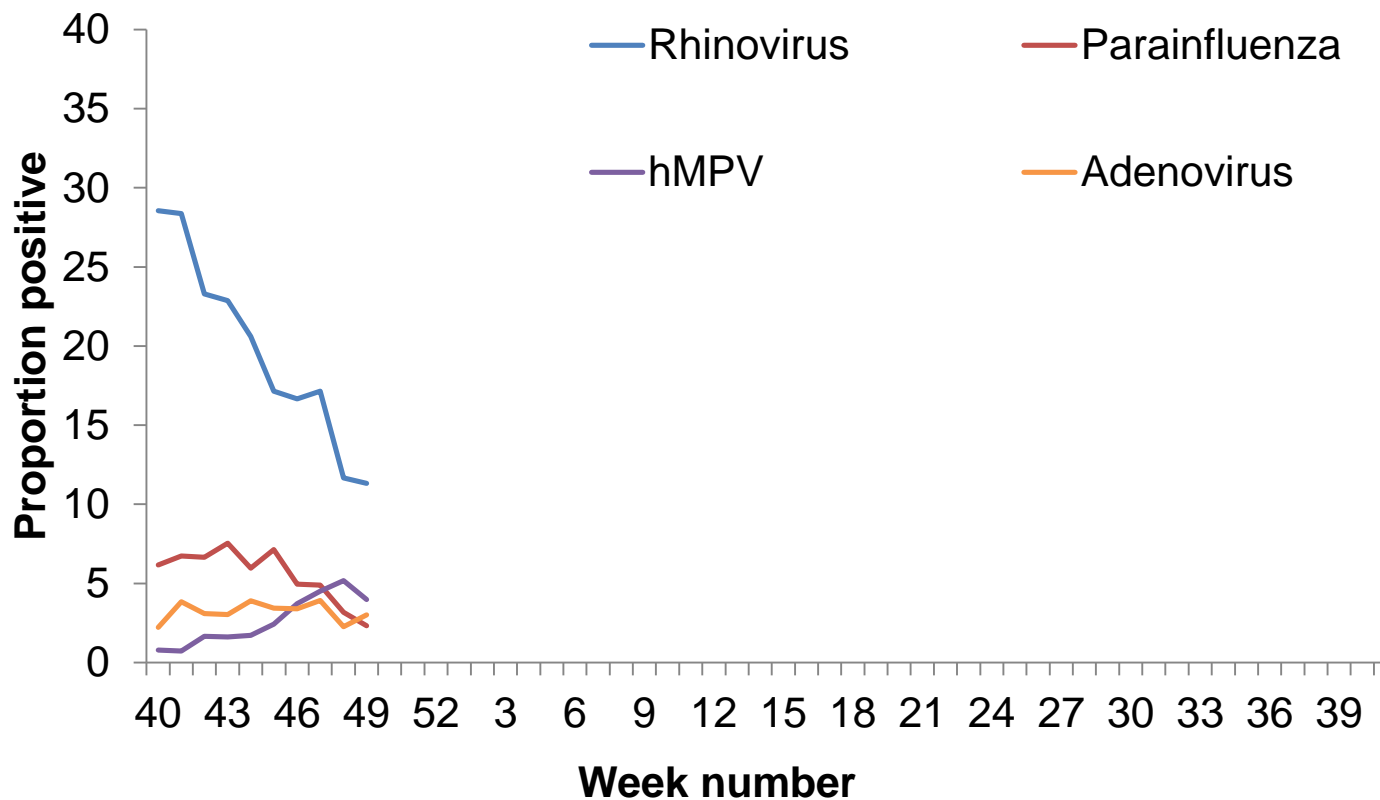


DataMart: Proportion of samples positive for RSV, by age group





DataMart: Proportion of samples positive for other viruses

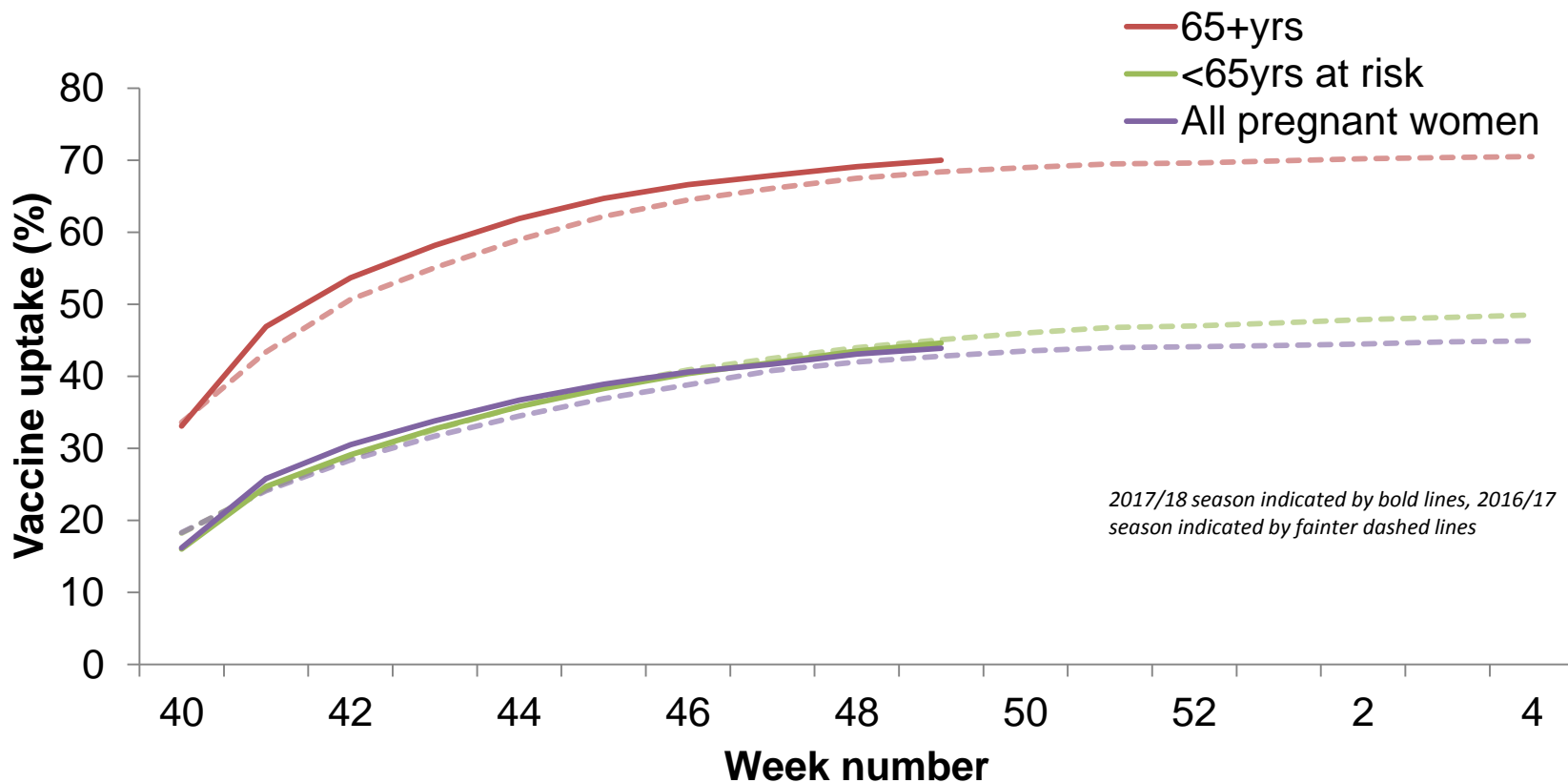




Influenza vaccination

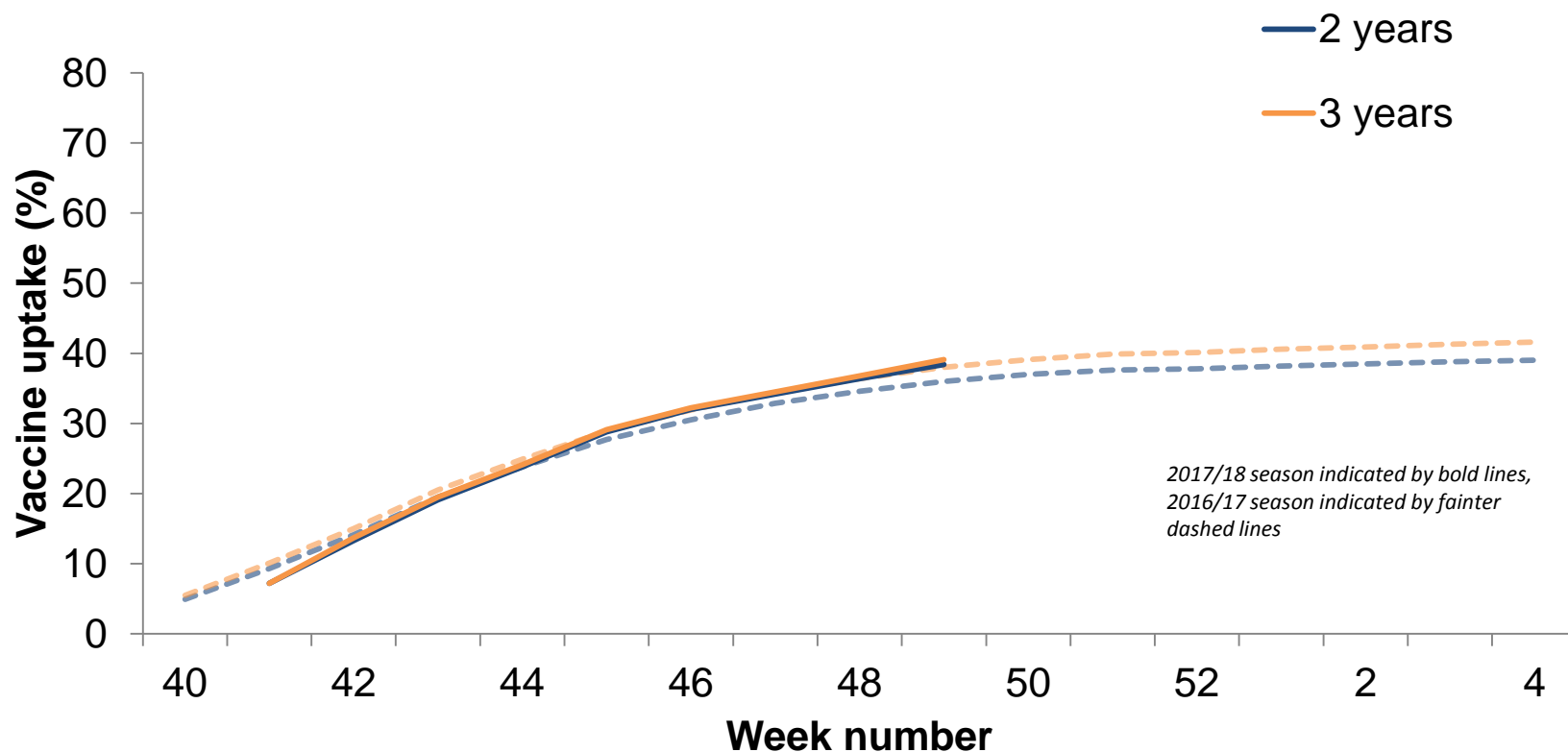


Seasonal influenza vaccine uptake in targeted groups, 2017/18, England





Seasonal influenza vaccine uptake in targeted groups, 2017/18, England



*2017/18 season indicated by bold lines,
2016/17 season indicated by fainter
dashed lines*



Links

- Sources of UK flu surveillance data:

<https://www.gov.uk/sources-of-uk-flu-data-influenza-surveillance-in-the-uk>

- Weekly flu report

<https://www.gov.uk/government/statistics/weekly-national-flu-reports>