



12 September 2017

Year: 2017

Week: 36

## In This Issue:

- Key messages.
- Syndromic indicators at a glance.
- Data summary.
- Indicators by syndrome.
- Cold/flu.
- Fever.
- Cough.
- Difficulty Breathing.
- Sore throat.
- Diarrhoea.
- Vomiting.
- Eye problems.
- Introduction to charts.
- Notes and further information.
- Acknowledgements.

## Key messages

Data to: 10 September 2017

NHS 111 calls for difficulty breathing increased during week 36, mainly in children aged 1-4 years (figures 5 & 5a) but remain within expected levels.

Eye problems calls also increased, mainly in 5-14 years age group (figures 9 & 9a).

A Heat-Health Watch system operates in England from 1 June to 15 September each year. As part of the Heatwave Plan for England, the PHE Real-time Syndromic Surveillance team will be routinely monitoring the public health impact of hot weather using syndromic surveillance data during this period.

Heat-health watch level (current reporting week): Level 1 **Summer preparedness**

<http://www.metoffice.gov.uk/weather/uk/heathealth/>

## Syndromic indicators at a glance:

Indicator	Trend	Level *
Cold/flu	no trend	below baseline levels
Fever	no trend	similar to baseline levels
Cough	no trend	below baseline levels
Difficulty breathing	increasing	below baseline levels
Sore throat	no trend	similar to baseline levels
Diarrhoea	no trend	below baseline levels
Vomiting	increasing	below baseline levels
Eye problems	increasing	similar to baseline levels
Heat/sun impact	no trend	similar to baseline levels
Insect bites	decreasing	below baseline levels

\*Since week 47 2014 new baselines have been introduced for comparison with previous years. Baselines use historical data from the NHS Direct surveillance system to estimate seasonal trend but with levels adjusted to reflect changes since the switch to using NHS 111 data in September 2013.

## Data summary:

Year	Week	Total calls
2017	36	210,401

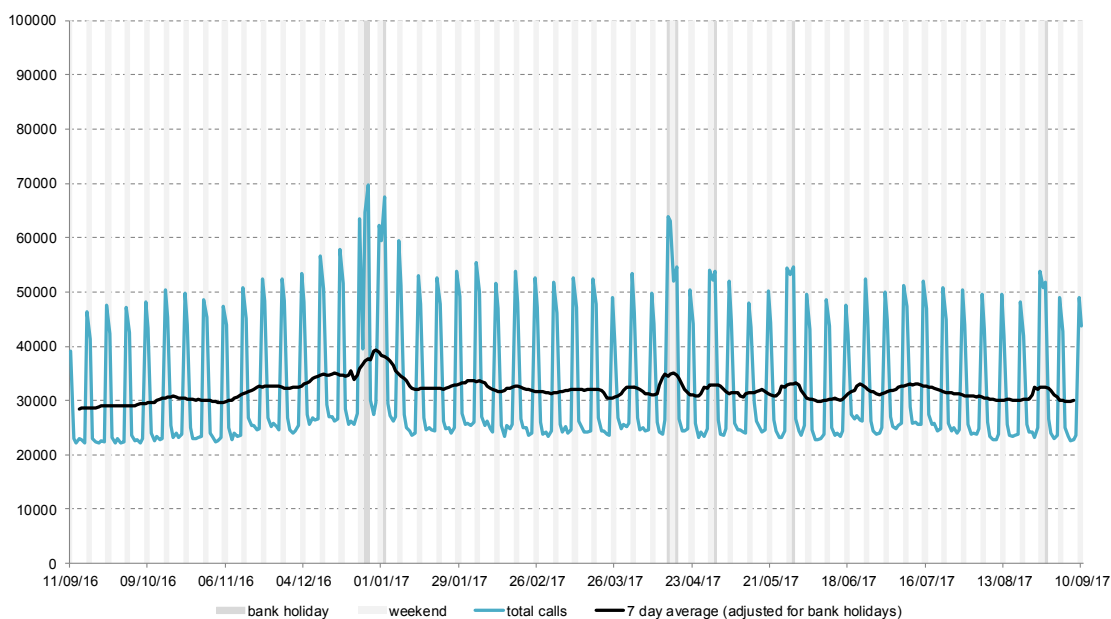
12 September 2017

Year: 2017

Week: 36

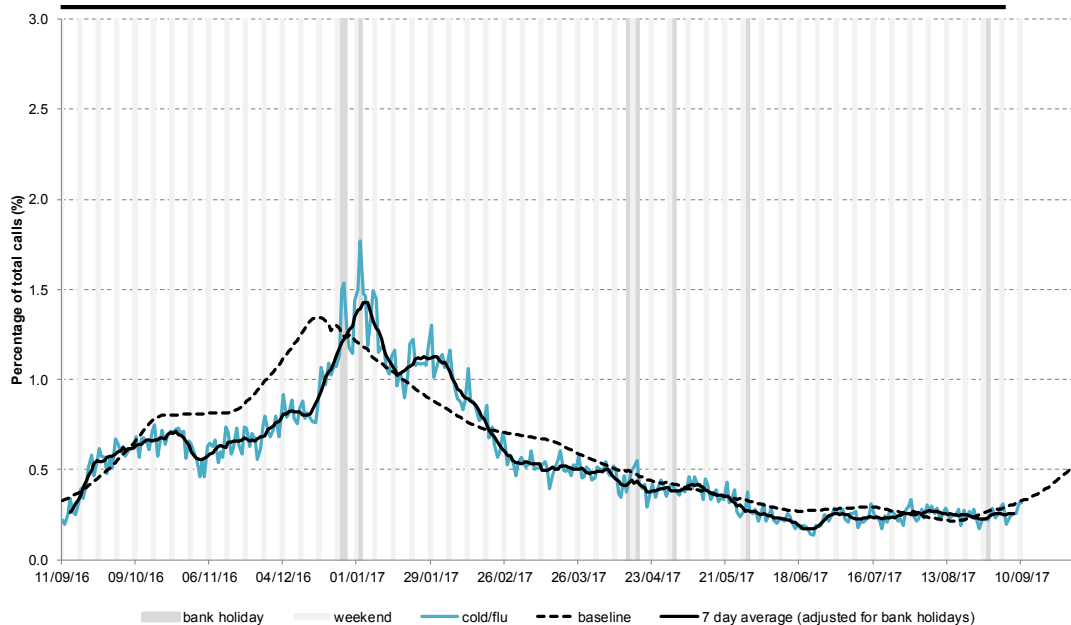
## 1: Total calls.

The total number of syndromic calls recorded each day by NHS 111.



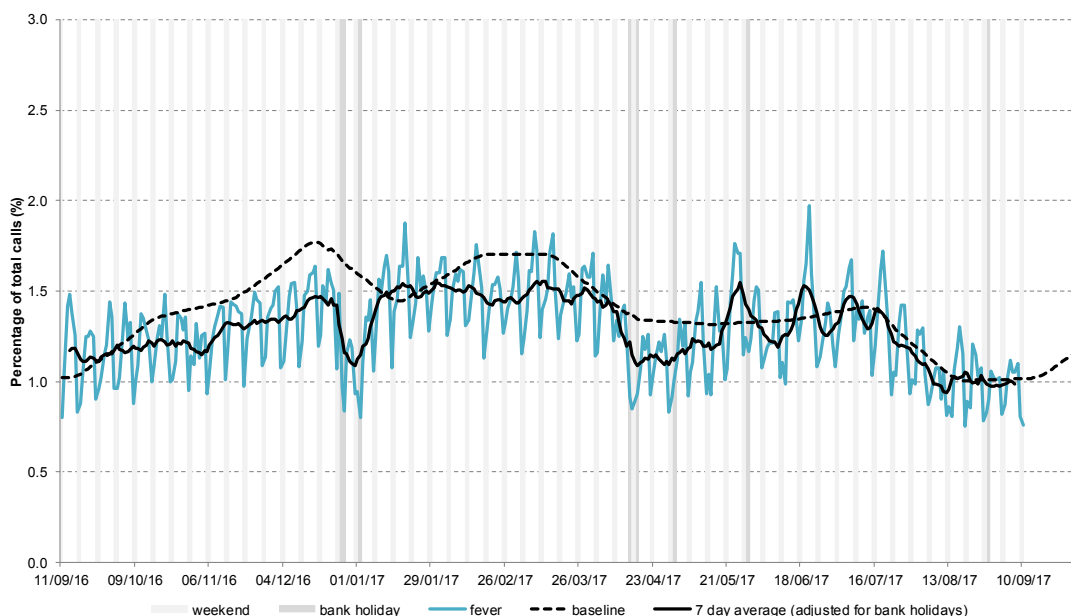
## 2: Cold/flu

Daily 'cold/flu' calls as a percentage of total calls. Baselines are constructed from historical data since 2010, including data from NHS 111 and NHS Direct.



## 3: Fever

Daily 'fever' calls as a percentage of total calls. Baselines are constructed from historical data since 2010, including data from NHS 111 and NHS Direct.



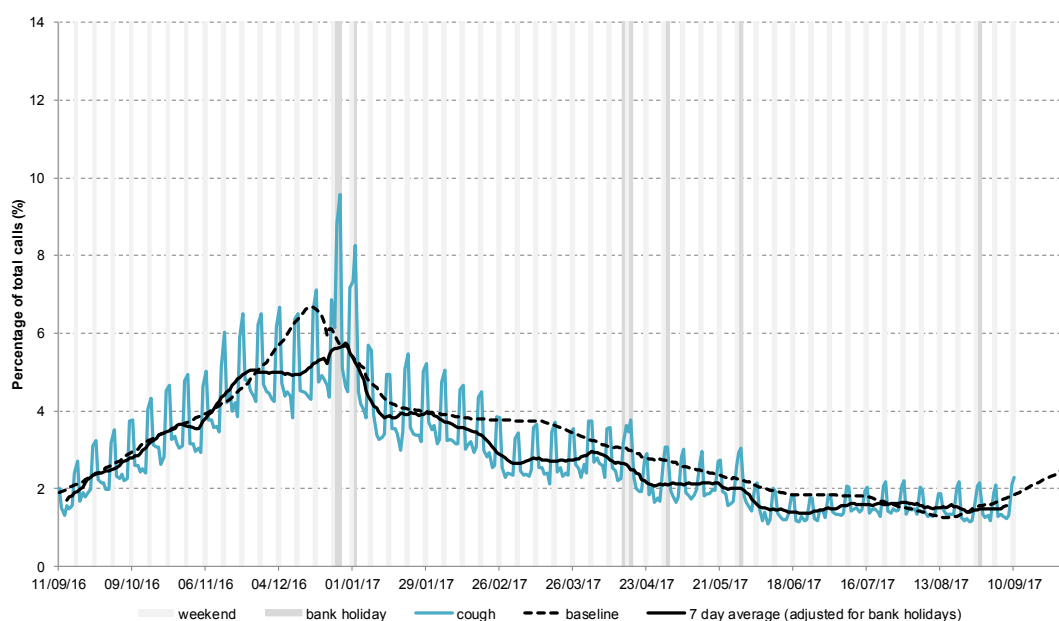
12 September 2017

Year: 2017

Week: 36

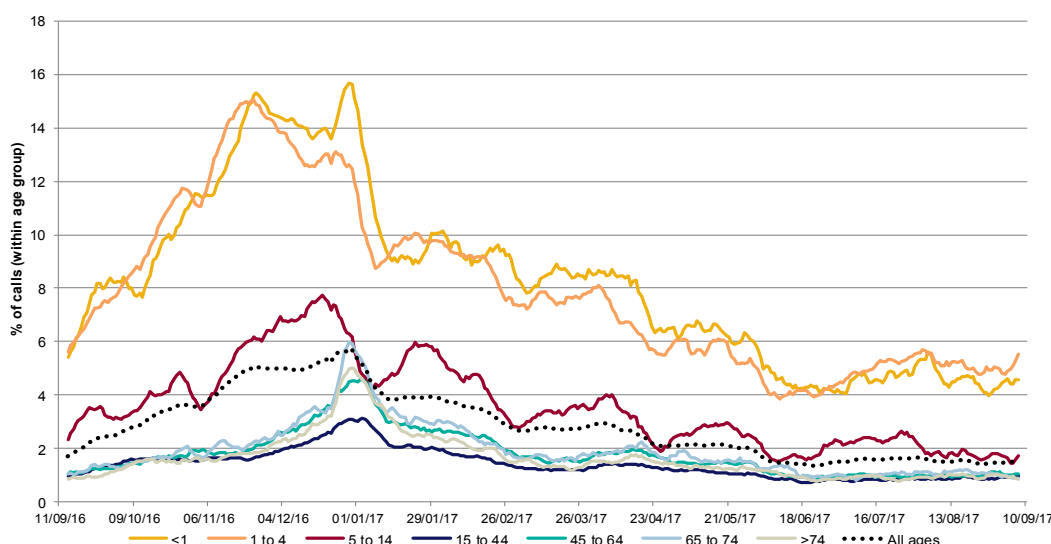
## 4: Cough

Daily 'cough' calls as a percentage of total calls. Baselines are constructed from historical data since 2010, including data from NHS 111 and NHS Direct.



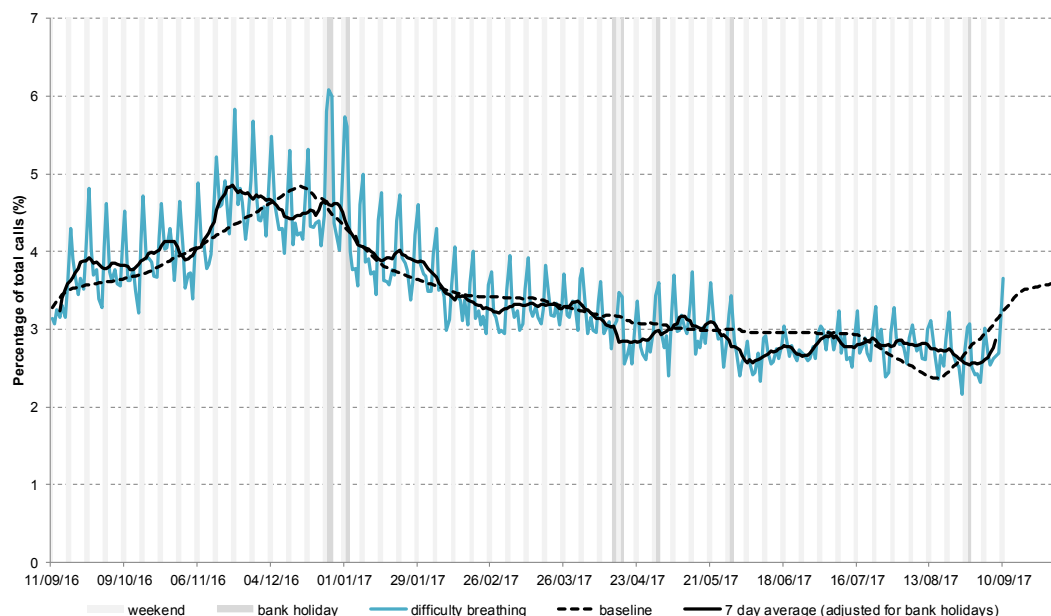
### 4a: Cough calls by age group

Cough calls as a percentage of total calls within each age group, shown as a 7 day moving average adjusted for bank holidays.



## 5: Difficulty breathing

Daily 'difficulty breathing' calls as a percentage of total calls. Baselines are constructed from historical data since 2010, including data from NHS 111 and NHS Direct.



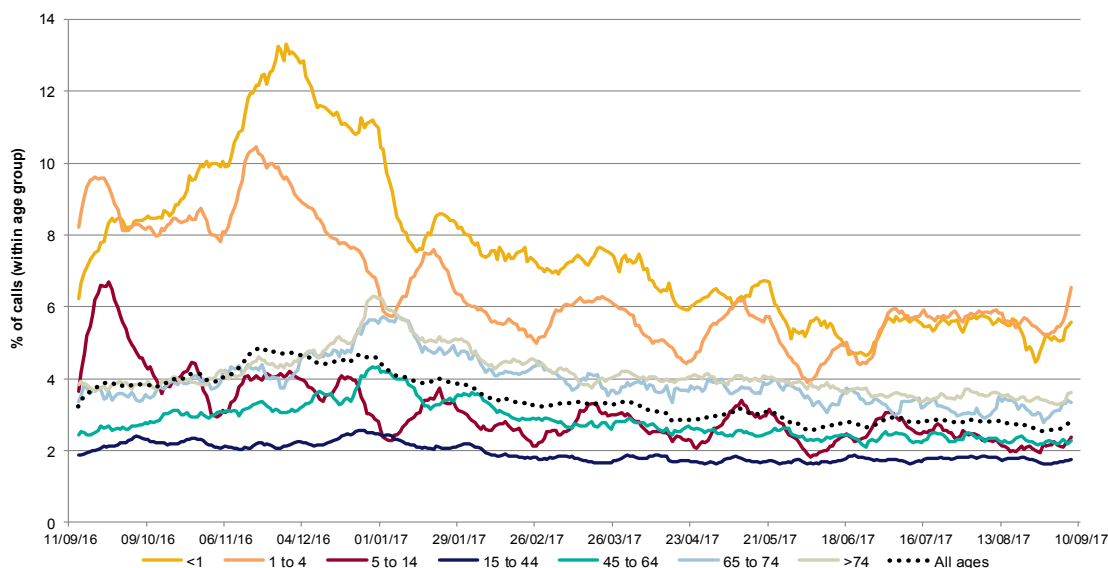
12 September 2017

Year: 2017

Week: 36

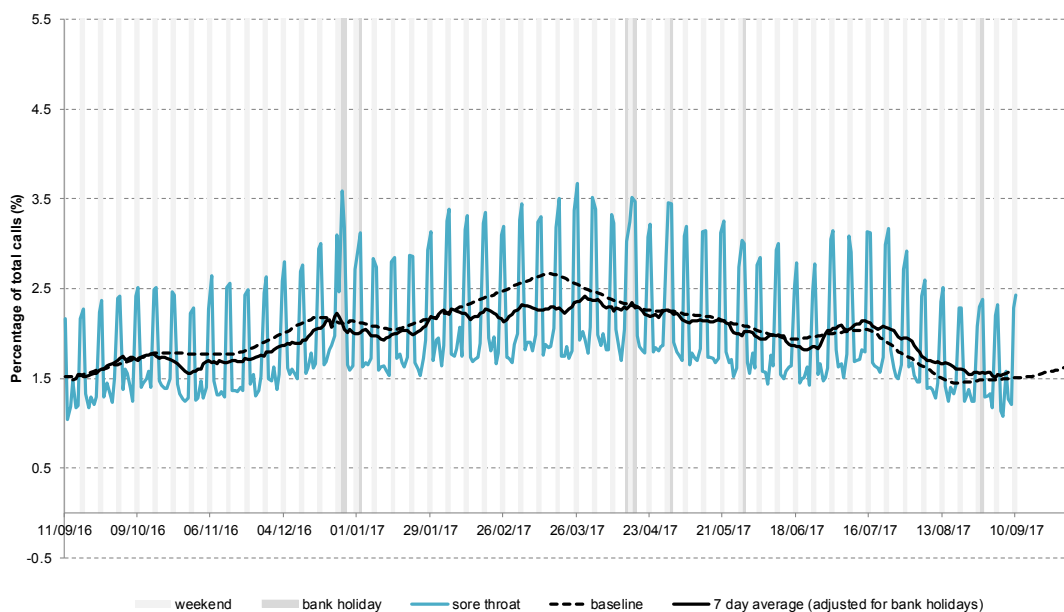
## 5a: Difficulty breathing calls by age group

Difficulty breathing calls as a percentage of total calls within each age group, shown as a 7 day moving average adjusted for bank holidays.



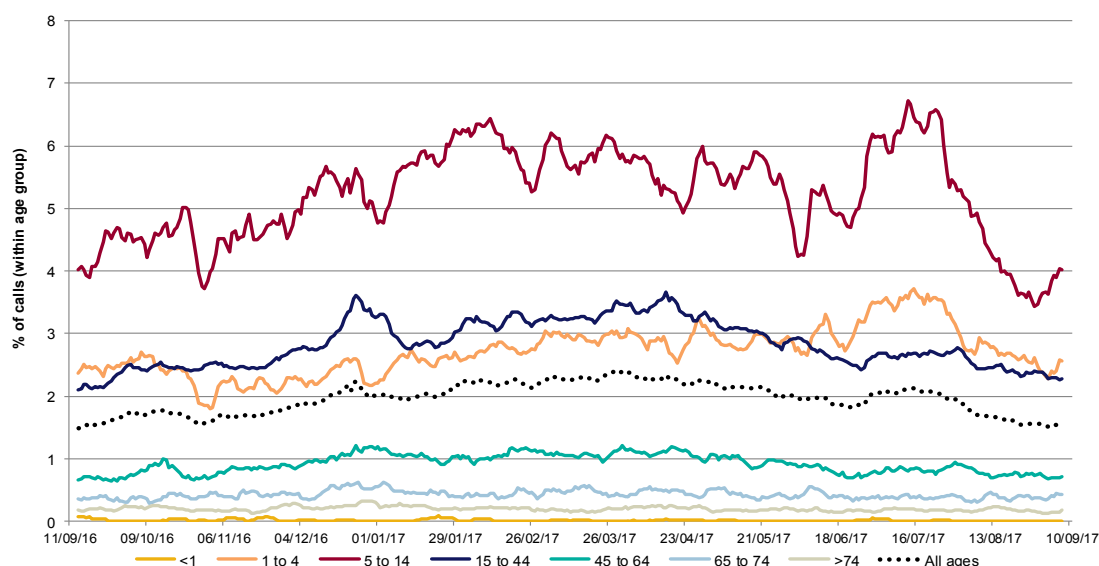
## 6: Sore throat

Daily 'sore throat' calls as a percentage of total calls. Baselines are constructed from historical data since 2010, including data from NHS 111 and NHS Direct.



## 6a: Sore throat calls by age group

Sore throat calls as a percentage of total calls within each age group, shown as a 7 day moving average adjusted for bank holidays.



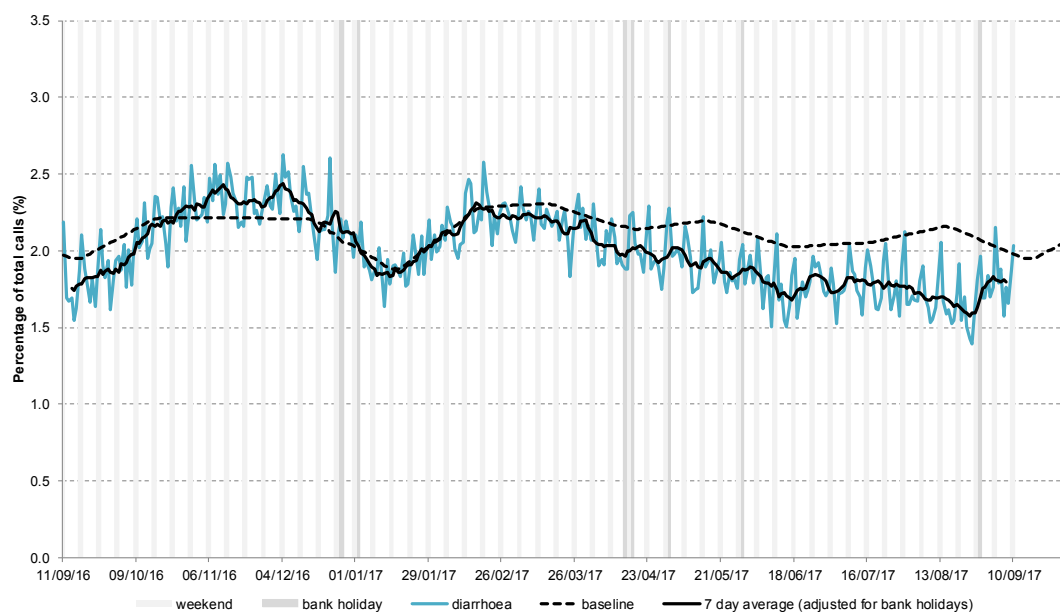
12 September 2017

Year: 2017

Week: 36

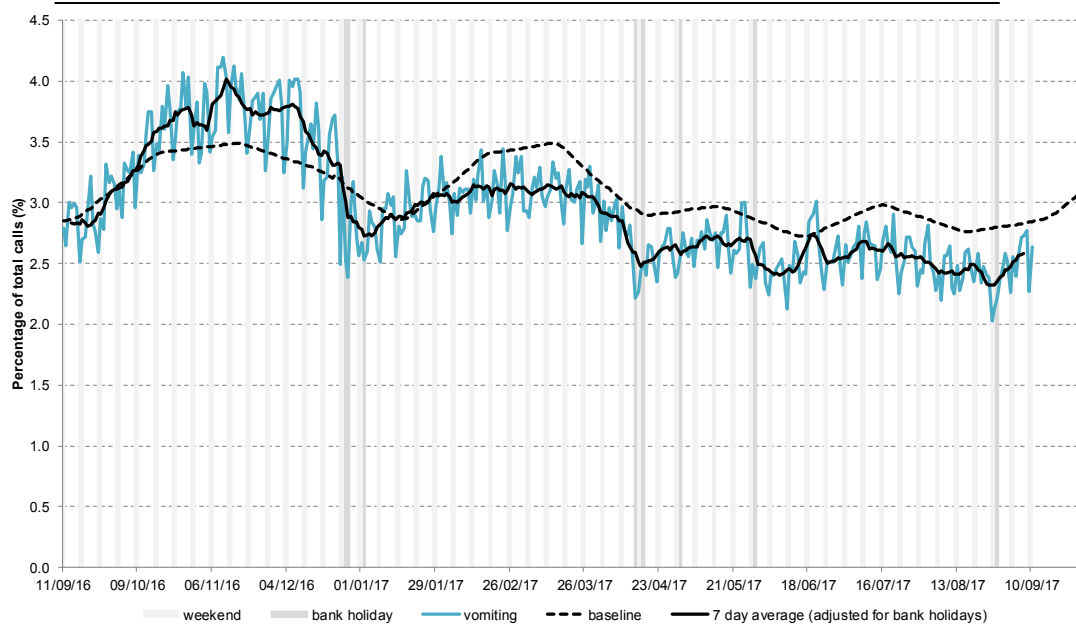
## 7. Diarrhoea

Daily 'diarrhoea' calls as a percentage of total calls. Baselines are constructed from historical data since 2010, including data from NHS 111 and NHS Direct.



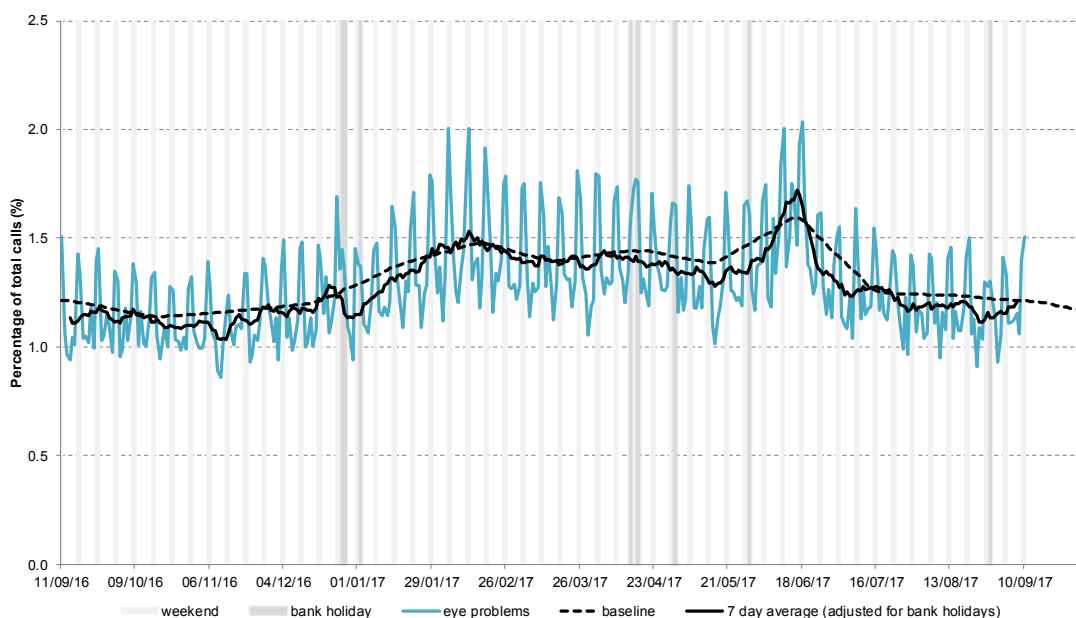
## 8: Vomiting

Daily 'vomiting' calls as a percentage of total calls. Baselines are constructed from historical data since 2010, including data from NHS 111 and NHS Direct.



## 9: Eye problems

Daily 'eye problems' calls as a percentage of total calls. Baselines are constructed from historical data since 2010, including data from NHS 111 and NHS Direct.



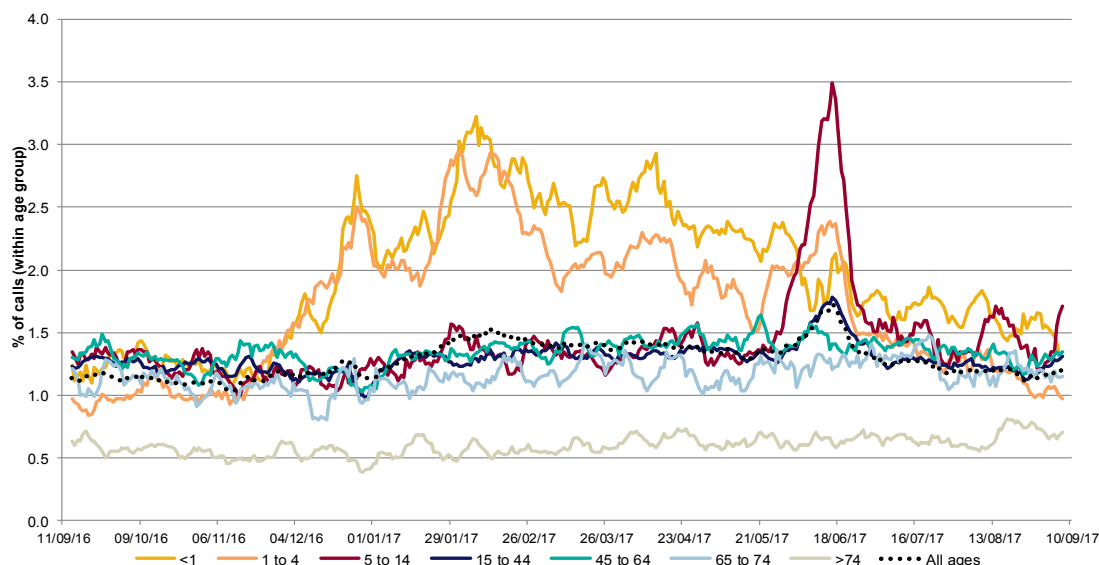
12 September 2017

Year: 2017

Week: 36

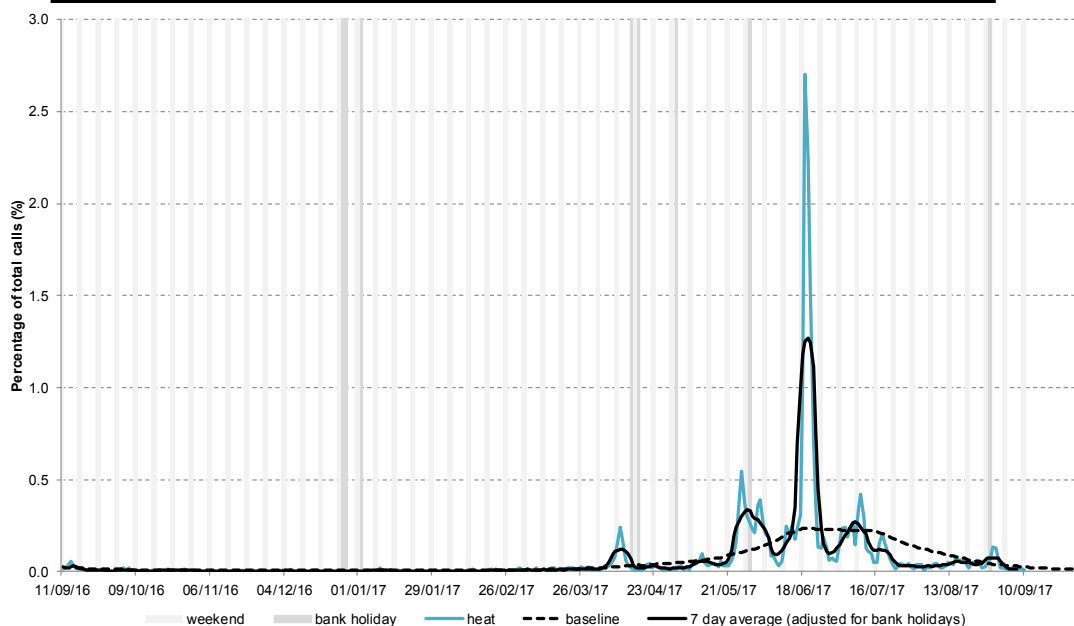
## 9a: Eye problems by age group

Eye problems calls as a percentage of total calls within each age group, shown as a 7 day moving average adjusted for bank holidays.



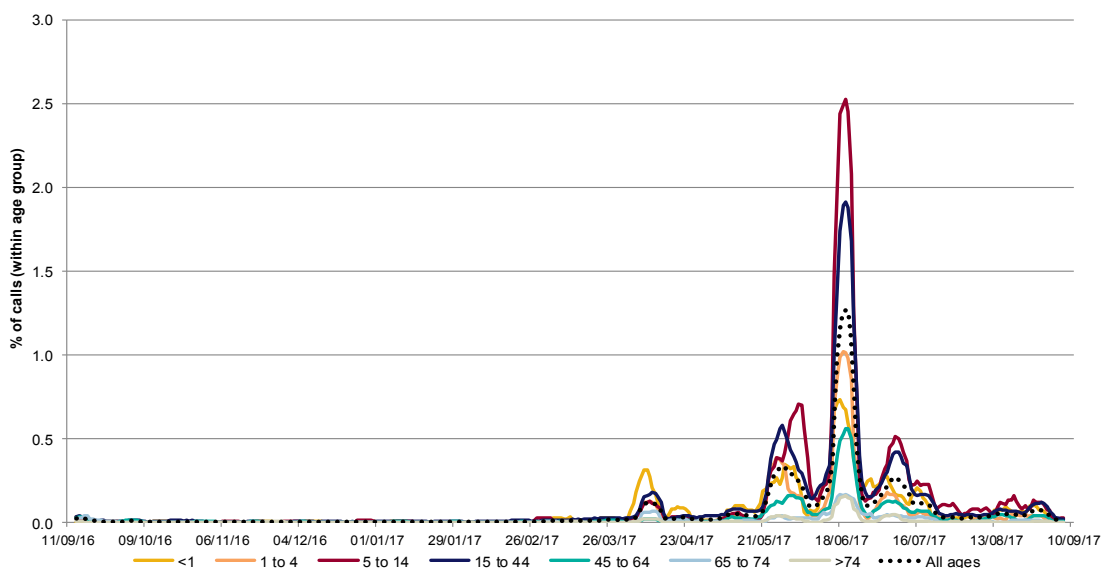
## 10. 'Heat/sun impact'

Daily 'heat/sun impact' calls as a percentage of total calls. Baselines are constructed from historical data since 2010, including data from NHS 111 and NHS Direct.



## 10a: 'Heat/sun impact' by age group

'Heat/sun impact' calls as a percentage of total calls within each age group, shown as a 7 day moving average adjusted for bank holidays.



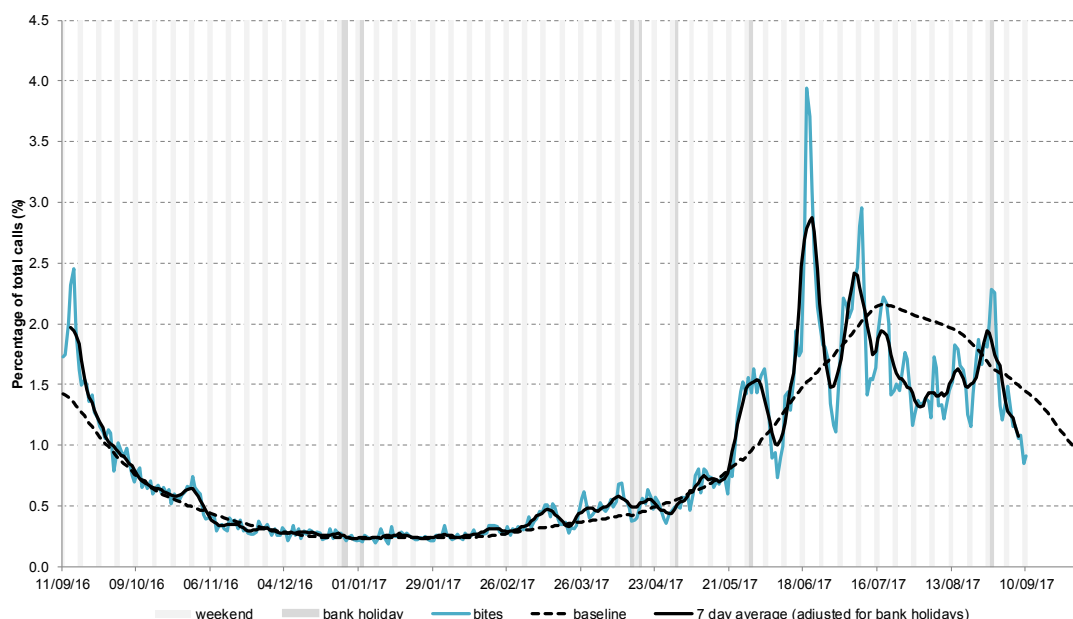
12 September 2017

Year: 2017

Week: 36

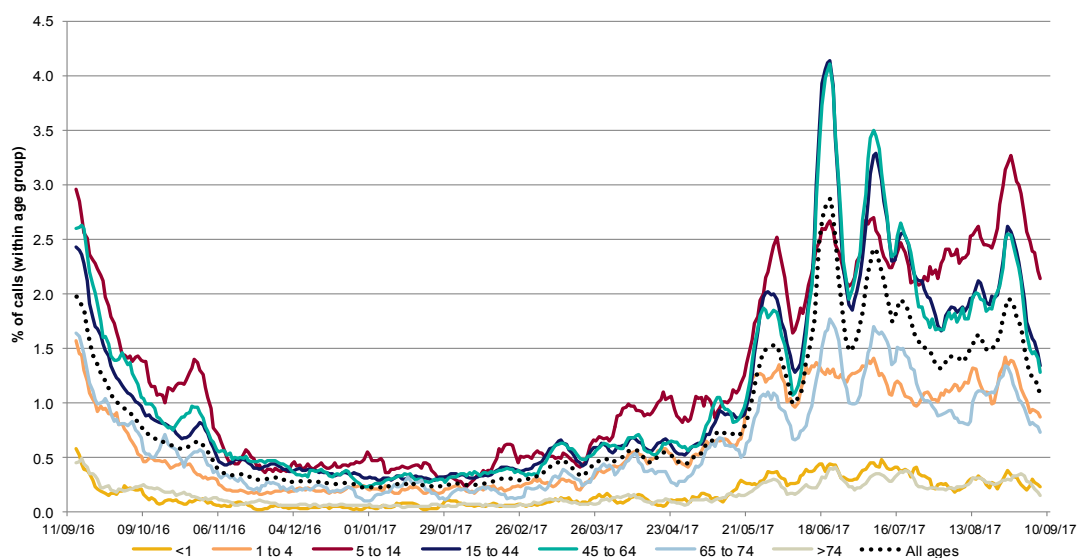
## 11: Insect bites

Daily 'insect bites' calls as a percentage of total calls. Baselines are constructed from historical data since 2010, including data from NHS 111 and NHS Direct.



### 11a: Insect bites by age group

Insect bites calls as a percentage of total calls within each age group, shown as a 7 day moving average adjusted for bank holidays.



Intentionally blank



## Introduction to charts:

- Weekends and bank holidays are marked by vertical **grey** lines (bank holidays **darker grey**).
- A 7-day moving average (adjusted for bank holidays) is overlaid on the daily data reported in each chart, unless specified.
- Baselines represent seasonally expected levels of activity and are constructed from historical data. Furthermore, they take into account any known substantial changes in data collection, population coverage or reporting practices. Baselines are refreshed using the latest data on a regular basis.
- NHS 111 call data are analysed on a daily basis to identify national and regional trends. A statistical algorithm underpins each system, routinely identifying activity that has increased significantly or is statistically significantly high for the time of year. Results from these daily analyses are assessed by the ReSST, along with analysis by age group, and anything deemed of public health importance is alerted by the team.

## Notes and further information:

---

Further information about NHS 111 can be found at:

<http://www.nhs.uk/NHSEngland/AboutNHSservices/Emergencyandurgentcareservices/Pages/NHS-111.aspx>

The Remote Health Advice Syndromic Surveillance bulletin can also be downloaded from the PHE Real-time Syndromic Surveillance website which also contains more information about syndromic surveillance:

<https://www.gov.uk/government/collections/syndromic-surveillance-systems-and-analyses>

## Acknowledgements:

We are grateful to NHS 111 and to NHS Digital for their assistance and support in providing the anonymised call data that underpin the Remote Health Advice Syndromic Surveillance System.

**Contact ReSST:**  
syndromic-surveillance  
@phe.gov.uk

---

### Remote Health Advice Syndromic Surveillance System Bulletin.

**Produced by:** PHE Real-time Syndromic Surveillance Team  
6<sup>th</sup> Floor, 5 St Philip's Place, Birmingham, B3 2PW

**Tel:** 0344 225 3560 > Option 4 > Option 2

**Fax:** 0121 236 2215

**Web:** <https://www.gov.uk/government/collections/syndromic-surveillance-systems-and-analyses>