



EC Type Examination Certificate Number: **0120/SGS0154**

Zhejiang CHINT Instrument & Meter Co., Ltd

Wenzhou Bridge Industrial Zone

Yueqing

Zhejiang

P.R.China

Instrument Identification:

DDZY666-Z

Instrument Traceable Number

0120/SGS0154

Single Phase, Active Import/Export (kWh), Indoor, Smart Electricity Meter

has been assessed and certified as meeting the requirements of

EC Directive 2004/22/EC

Measuring Instruments Annex B

It is certified that the manufacturer's technical design and specimen for the above instrument has been examined and, based on the evidence submitted, it is considered that the instrument conforms to the requirements of MI-003 of EC Directive 2004/22/EC

This certificate must be used in conjunction with a certificate covering the product verification as required in Annex D or Annex F

This certificate is valid for 10 years from 11th June 2014 to 10th June 2024
Issue 1


Certification is based on report number(s) SHES140400126701 dated 10th June 2014

Authorised Signature

Jan Saunders


SGS United Kingdom Limited, Notified Body 0120
Unit 202B Worle Parkway, Weston-super-Mare, BS22 6WA UK
t +44 (0)1934 522917 f +44 (0)1934 522137 www.sgs.com

Contact Address
SGS United Kingdom Ltd, Units 12A & 12B, South Industrial Estate, Bowburn, Durham, DH6 5AD UK
t +44 (0)191 377 2000 f +44 (0)191 377 2020 www.sgs.com

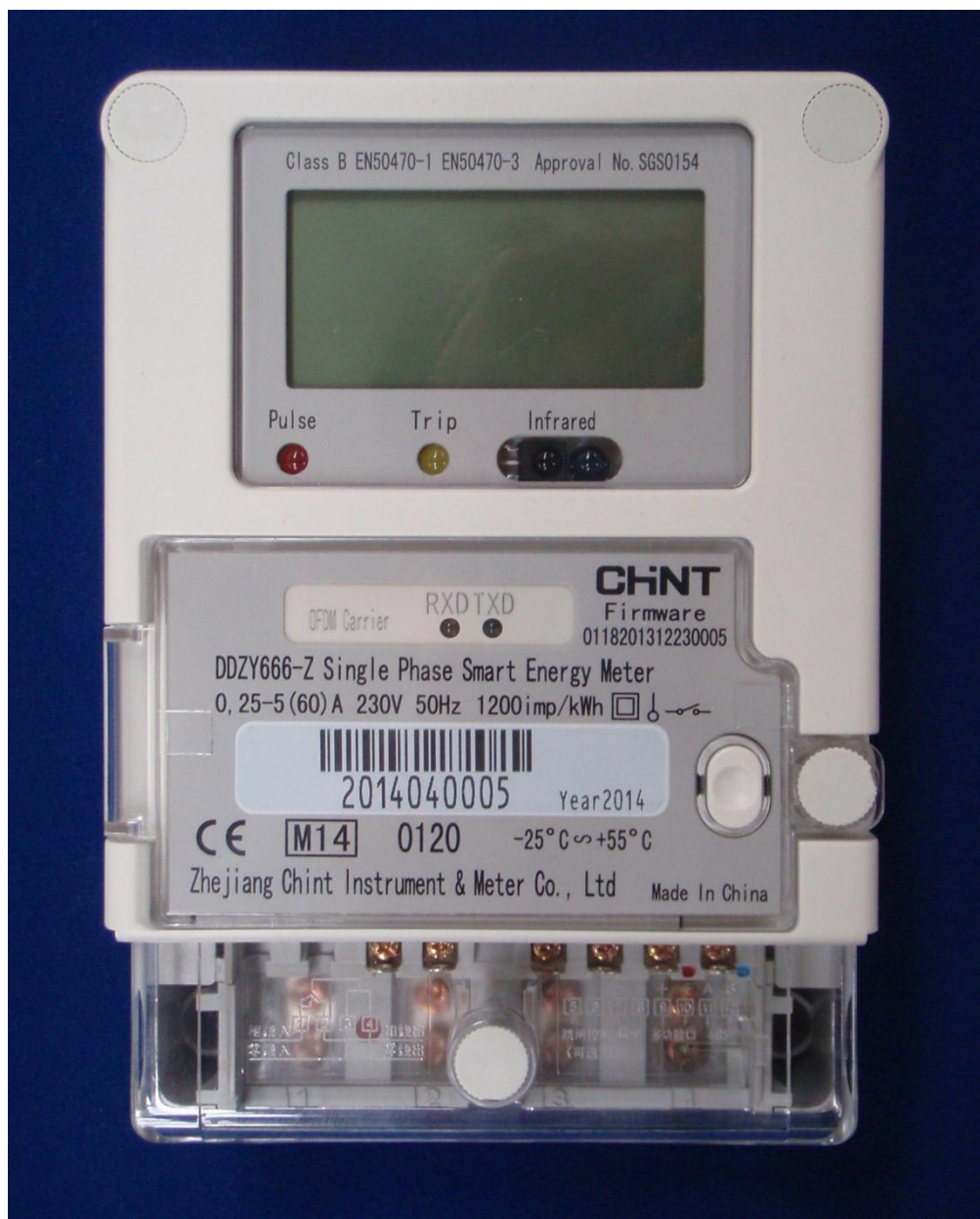
	EC-Type Examination Certificate Number:	
	0120/ SGS0154	
	Issue Number: 1	Dated: 11 th June 2014


1. Technical Data

Manufacturer	Zhejiang CHINT Instrument & Meter Co. Ltd
Meter Type	DDZY666-Z
Voltage Rating (U_n)	230V
Current Rating ($I_{min} - I_{ref} (I_{max})$)	0.25-5(60)A
Frequency (F_n)	50Hz
Active Accuracy Class (kWh)	A or B (kWh)
Type of circuit	1p2w
Temperature Range	-25°C to +55°C
Software Version No.	0118201312230005
Identification Location	Nameplate
Bill Of Materials No.'s	ZTY0.054.198V4 0004 5(60)
IP Rating	IP51
Insulation Protective Class	Class II
LED Pulse Constant	1200imp/ kWh
Impulse Voltage Rating	6kV
AC Voltage Rating	4kV
Main Cover Sealing Type	2 x Plastic cap insert
Terminal Cover Sealing Type	1 x Plastic cap insert
Integrity of meter	Inaccessible without breaking seals
Intended Location of the Meter	Indoor
Type of Register	LCD
Terminal Arrangement(s)	DIN

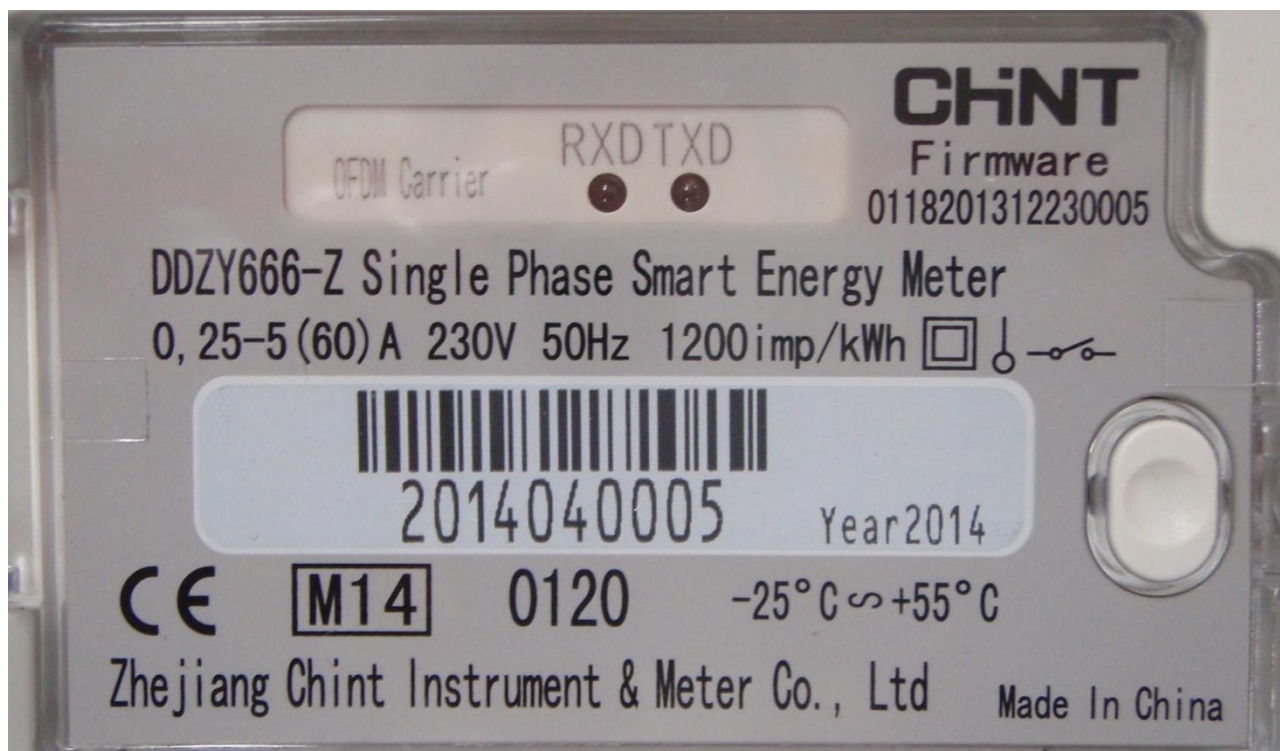
	EC-Type Examination Certificate Number:	
	0120/ SGS0154	
	Issue Number: 1	Dated: 11 th June 2014


2. Photograph of Meter



	EC-Type Examination Certificate Number:	
	0120/ SGS0154	
	Issue Number: 1	Dated: 11 th June 2014

3. Meter Name Plate



	EC-Type Examination Certificate Number:	
	0120/ SGS0154	
	Issue Number: 1	Dated: 11 th June 2014

4. Influence factors for temperature, frequency and voltage


		Influence Factors for Temperature, Frequency and Voltage					
Current	PF Cos	-25	-10	5	30	40	55
I _{min}	1.0	0.05	0.03	0.03	0.05	0.07	0.11
I _{tr}	1.0	0.07	0.02	0.02	0.04	0.04	0.11
10I _{tr}	1.0	0.08	0.02	0.05	0.03	0.04	0.10
I _{max}	1.0	0.12	0.06	0.06	0.06	0.06	0.09
I _{tr}	0.5ind	0.07	0.04	0.04	0.04	0.05	0.11
10I _{tr}	0.5ind	0.08	0.02	0.02	0.02	0.03	0.10
I _{max}	0.5ind	0.13	0.07	0.06	0.06	0.06	0.08
I _{tr}	0.8cap	0.06	0.04	0.04	0.05	0.08	0.13
10I _{tr}	0.8cap	0.10	0.05	0.05	0.07	0.07	0.13
I _{max}	0.8cap	0.15	0.08	0.08	0.08	0.08	0.10

During the type approval examination the influence factors for temperature, frequency and voltage are determined per load point. The table above represents the sum of the square values per load, determined via the following formula:-

$$\delta e(T, U, f) = \sqrt{(\delta e^2(T, I, \cos\varphi) + \delta e^2(U, I, \cos\varphi) + \delta e^2(f, I, \cos\varphi))}$$

where

$\delta e(T, I, \cos\varphi)$ = Additional error due to variation of the temperature at the same load
 $\delta e(U, I, \cos\varphi)$ = Additional error due to variation of the voltage at the same load
 $\delta e(f, I, \cos\varphi)$ = Additional error due to variation of the frequency at the same load

	EC-Type Examination Certificate Number:	
	0120/ SGS0154	
	Issue Number: 1	Dated: 11 th June 2014

5. Annex of Variants

Product Variant Identification Details:

Type Designation	Description of meter
DDZY666-Z	Single phase smart electricity meter with carrier-wave, Voltage and current ratings: 0,25-5 (60) A 230V, Carrier Chip Type: LME2980, Modulation Mode: OFDM, Center frequency: 390kHz, Frequency Range: 390kHz \pm 24kHz, Communication rate: 20 kbps

Modifications to the meter(s) described according to approval No.**0120/ SGS0154** must be notified to the issuing body to confirm the meter(s) continuing compliance to the relevant pattern approval standard(s).

6. Document Revision History

Issue	Date	Comments
1	11/06/2014	Initial Issue