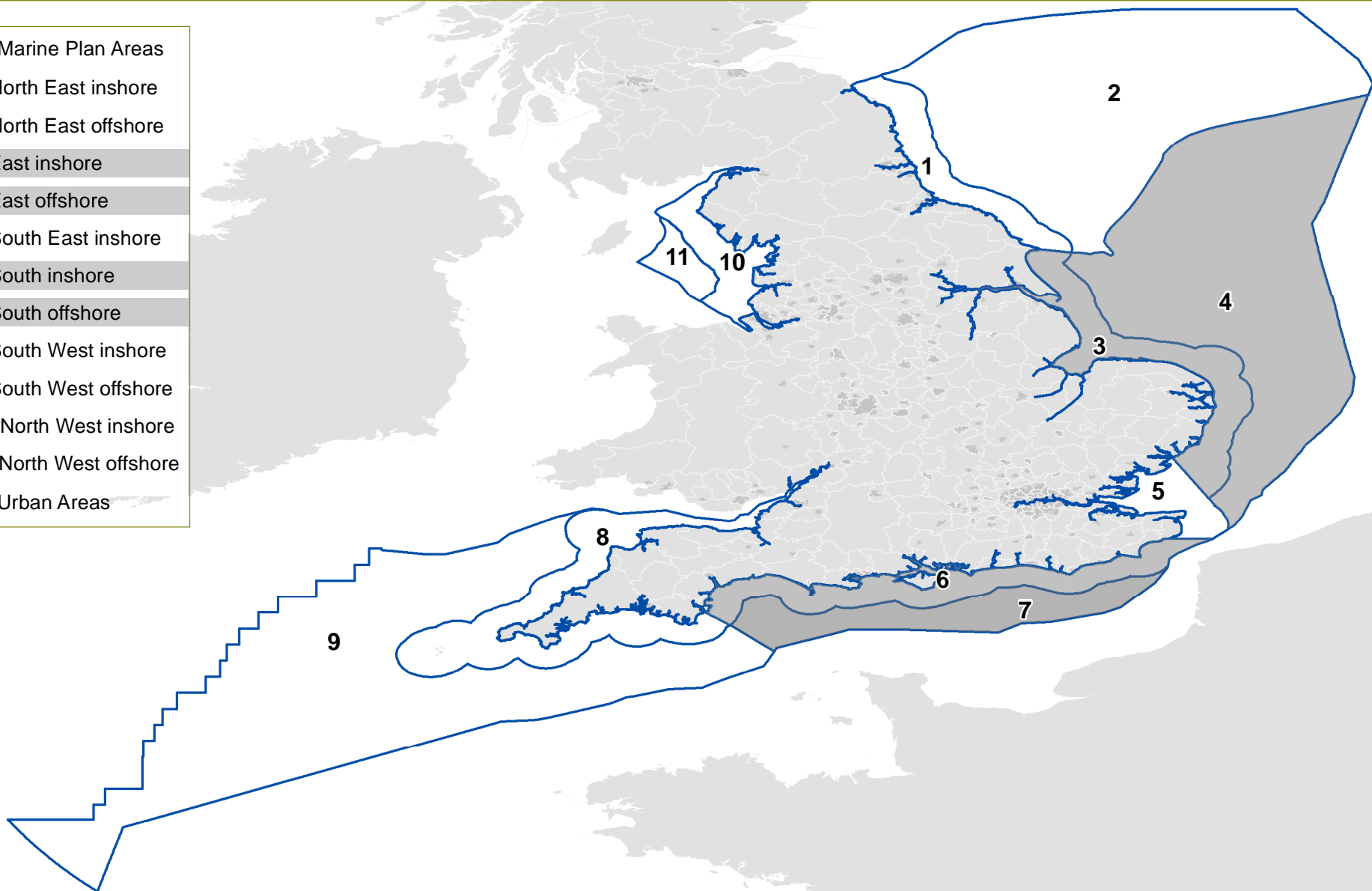




# Figure 1.1: Marine Plan Areas

Coordinate System: GCS ETRS 1989 Not to be used for navigation.

- Marine Plan Areas
- 1 - North East inshore
- 2 - North East offshore
- 3 - East inshore
- 4 - East offshore
- 5 - South East inshore
- 6 - South inshore
- 7 - South offshore
- 8 - South West inshore
- 9 - South West offshore
- 10 - North West inshore
- 11 - North West offshore
- Urban Areas

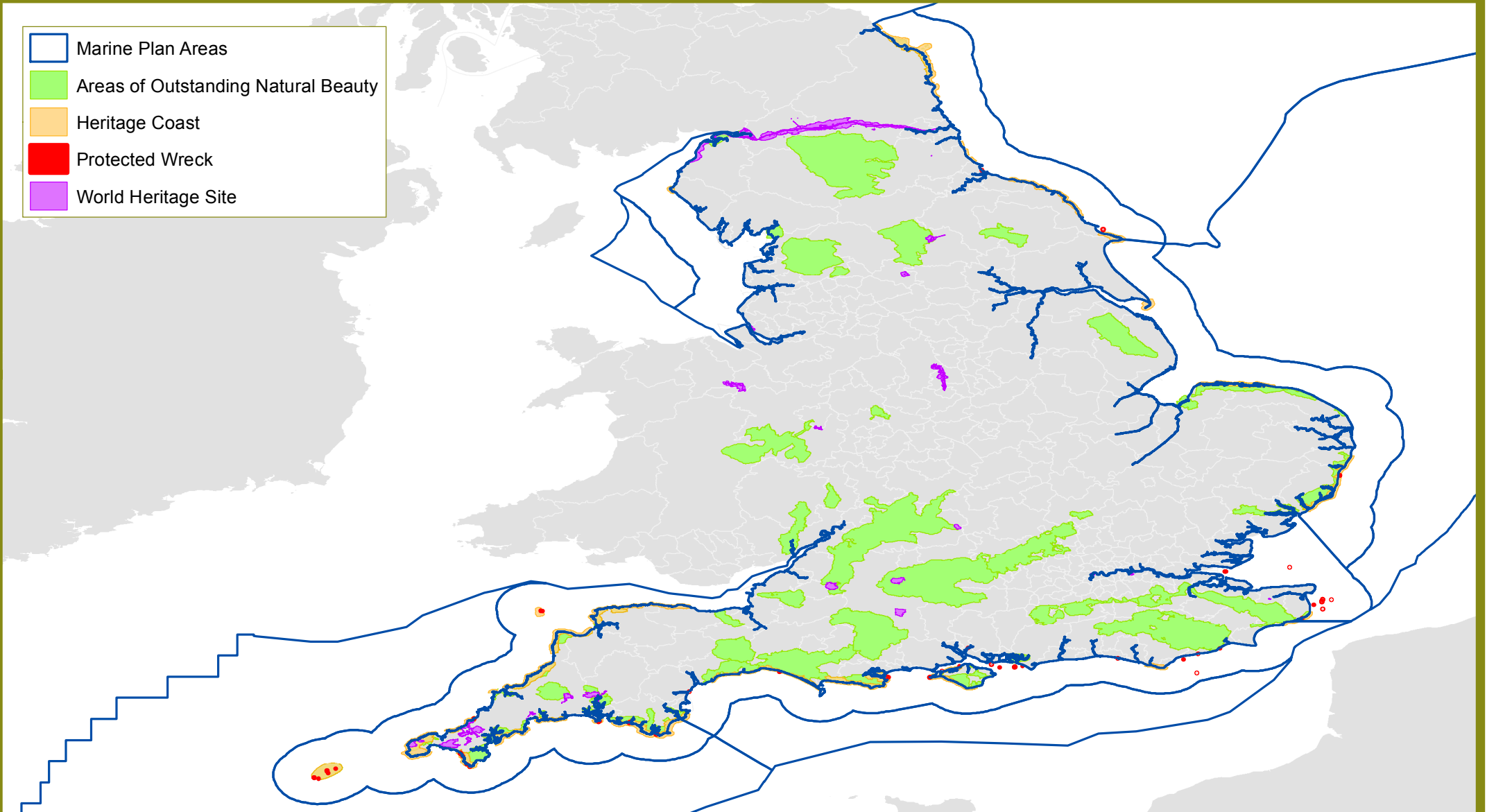




# Figure 1.2: Heritage Assets

Coordinate System: GCS ETRS 1989 Not to be used for navigation.

- Marine Plan Areas
- Areas of Outstanding Natural Beauty
- Heritage Coast
- Protected Wreck
- World Heritage Site



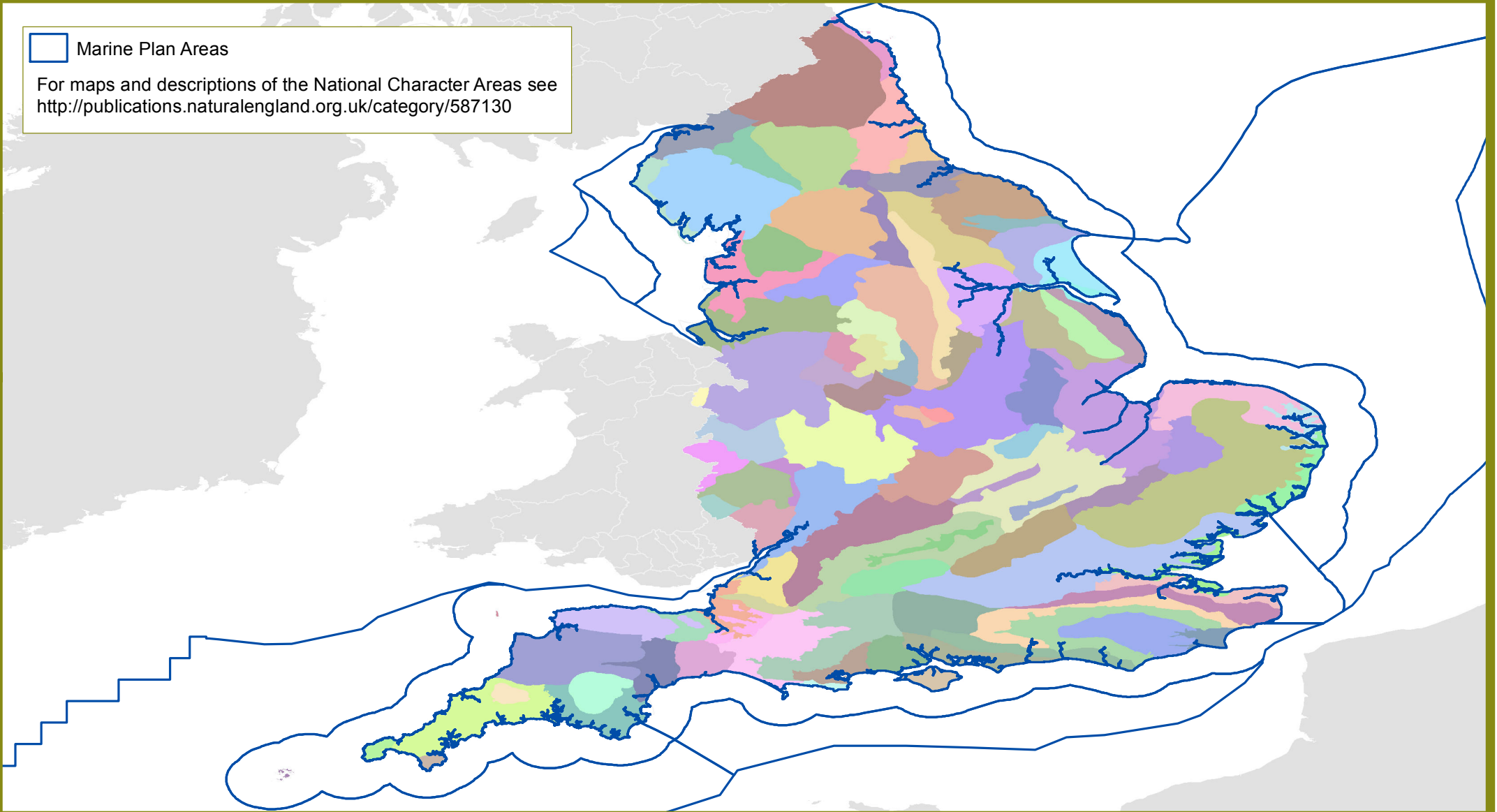


# Figure 3.1: National Character Areas

Coordinate System: GCS ETRS 1989 Not to be used for navigation.

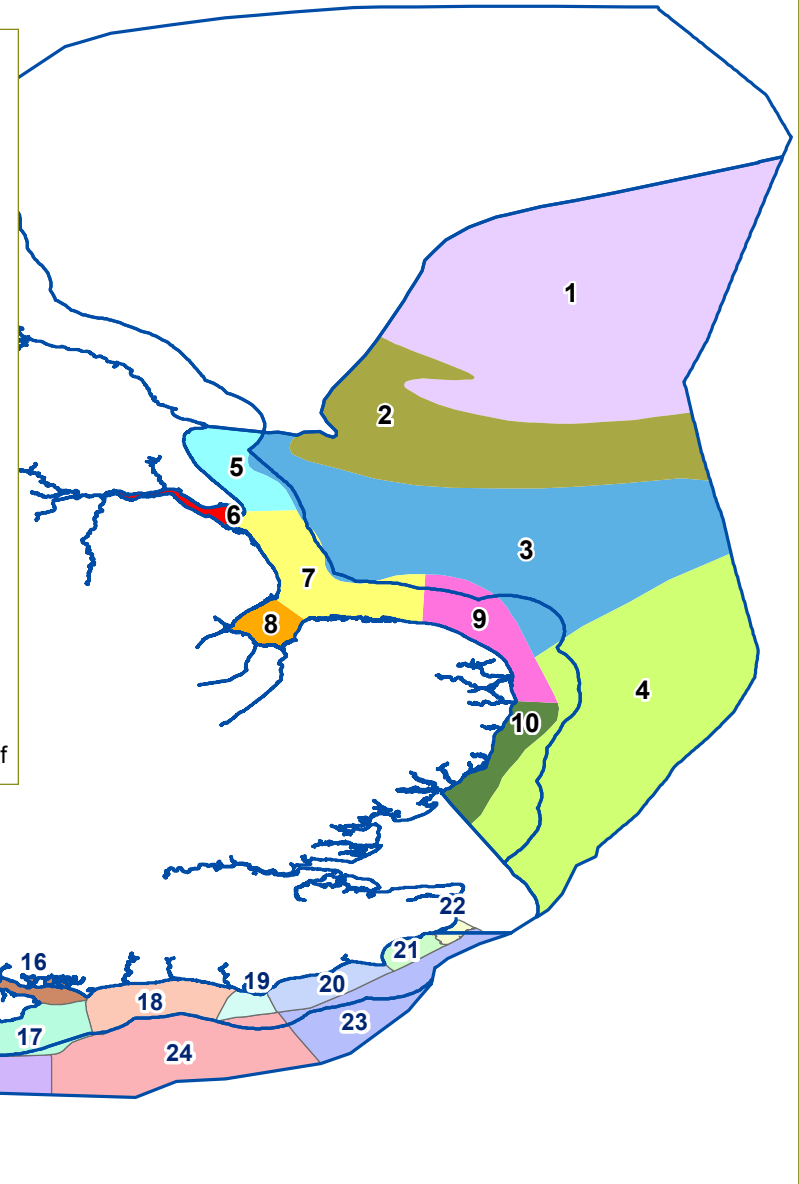
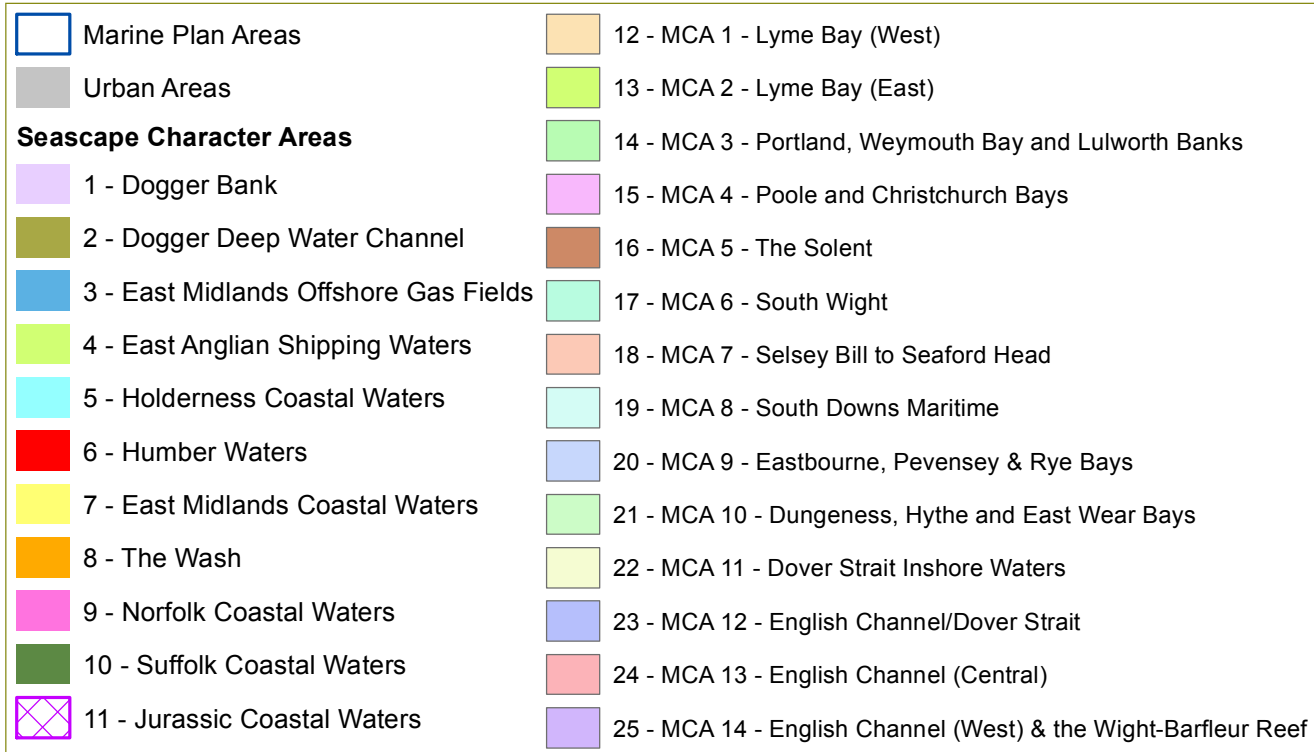
 Marine Plan Areas

For maps and descriptions of the National Character Areas see  
<http://publications.naturalengland.org.uk/category/587130>



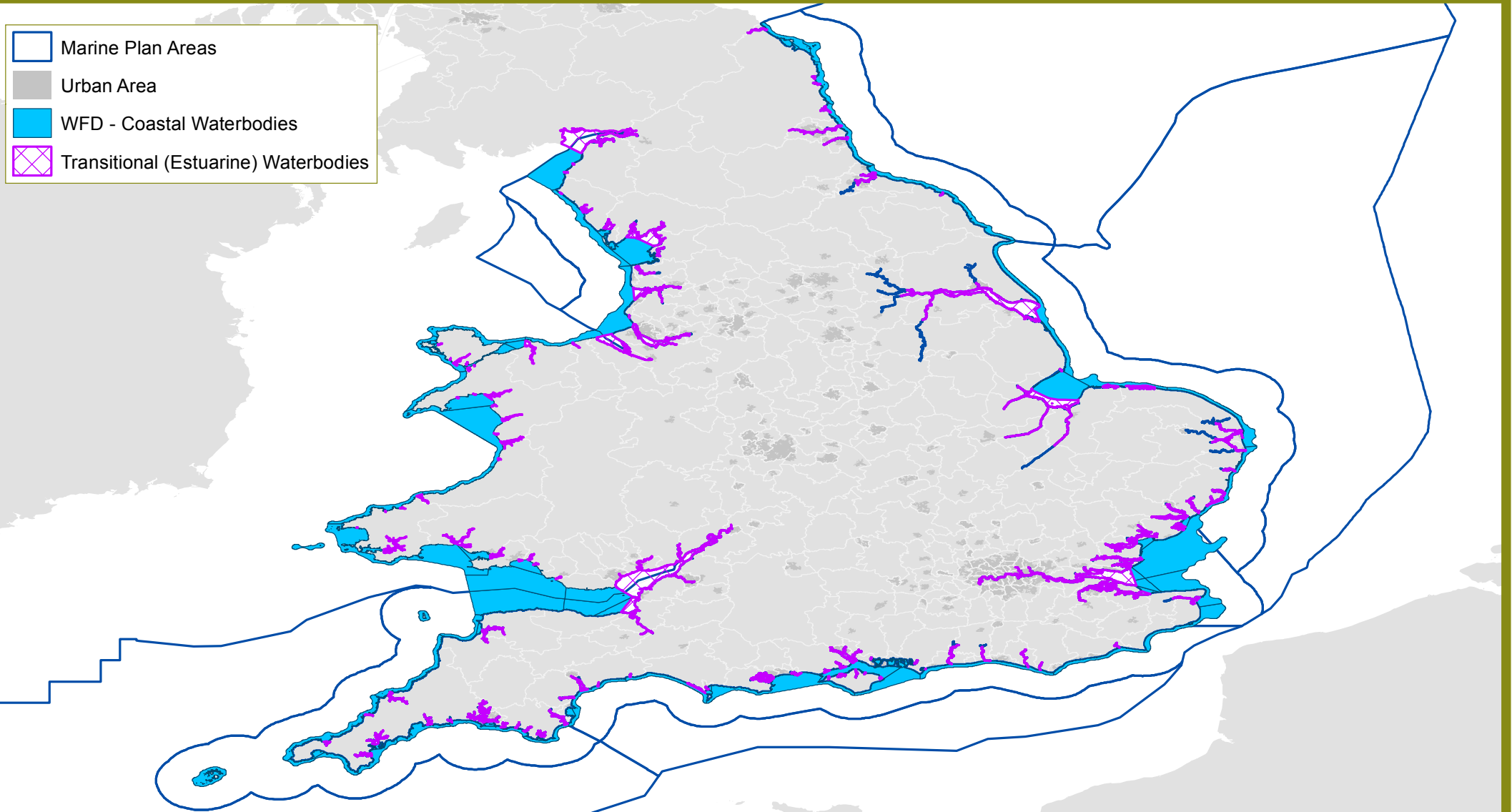
# Figure 3.2: Seascape Characterisation Areas

Coordinate System: GCS ETRS 1989 Not to be used for navigation.



# Figure 4.1: Water Framework Directive Coastal Waterbodies and Transitional Waterbodies

Coordinate System: GCS ETRS 1989 Not to be used for navigation.

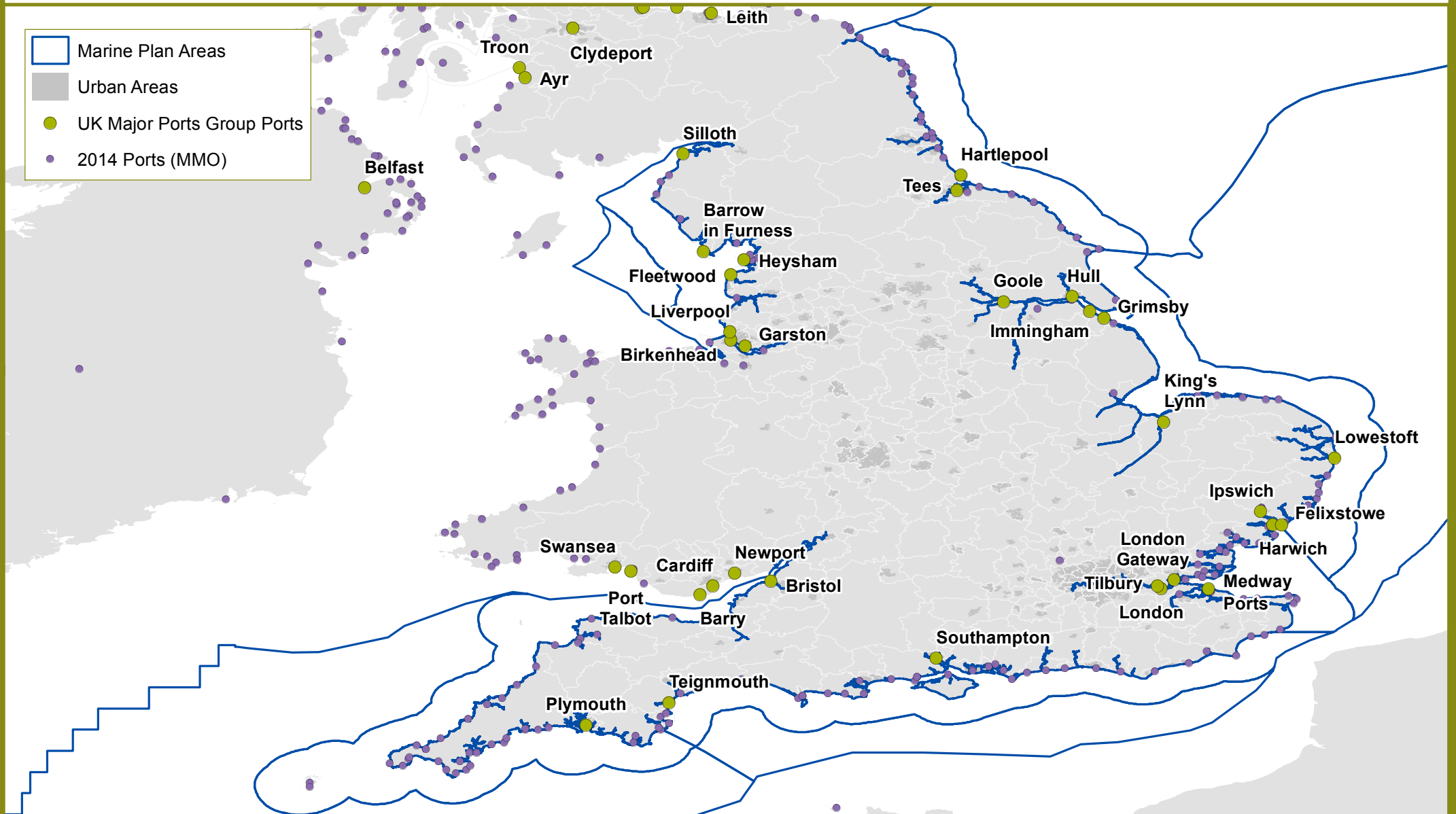




# Figure 5.1: Ports

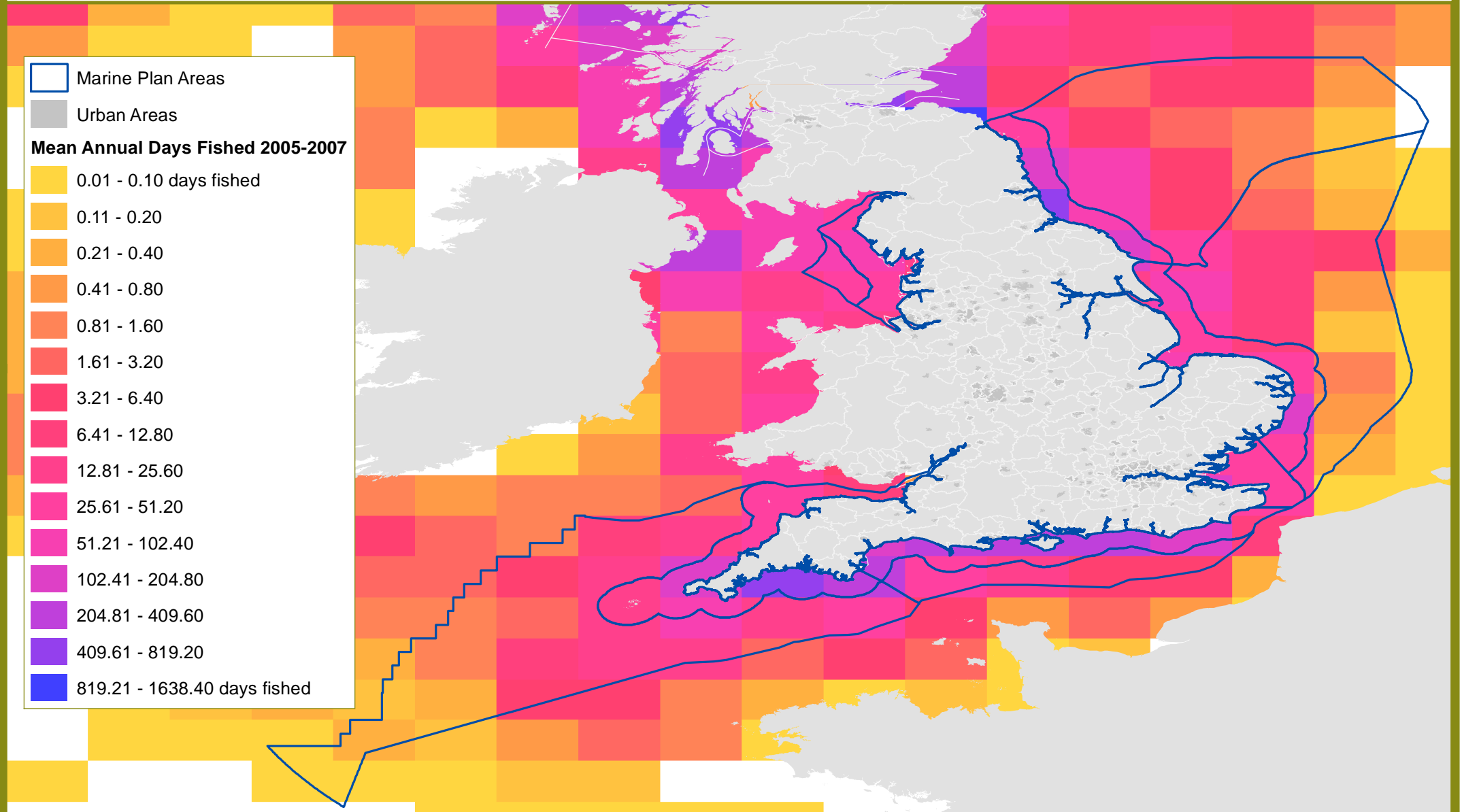
Coordinate System: GCS ETRS 1989 Not to be used for navigation.

- Marine Plan Areas
- Urban Areas
- UK Major Ports Group Ports
- 2014 Ports (MMO)






# Figure 8.1: UK Fishing Effort

Coordinate System: GCS ETRS 1989 Not to be used for navigation.



# Figure 8.2: Area Between International Maritime Organisation Routing Areas

Coordinate System: GCS ETRS 1989 Not to be used for navigation.

-  Marine Plan Areas
-  Urban Areas
-  Area Between IMO Routeing Areas

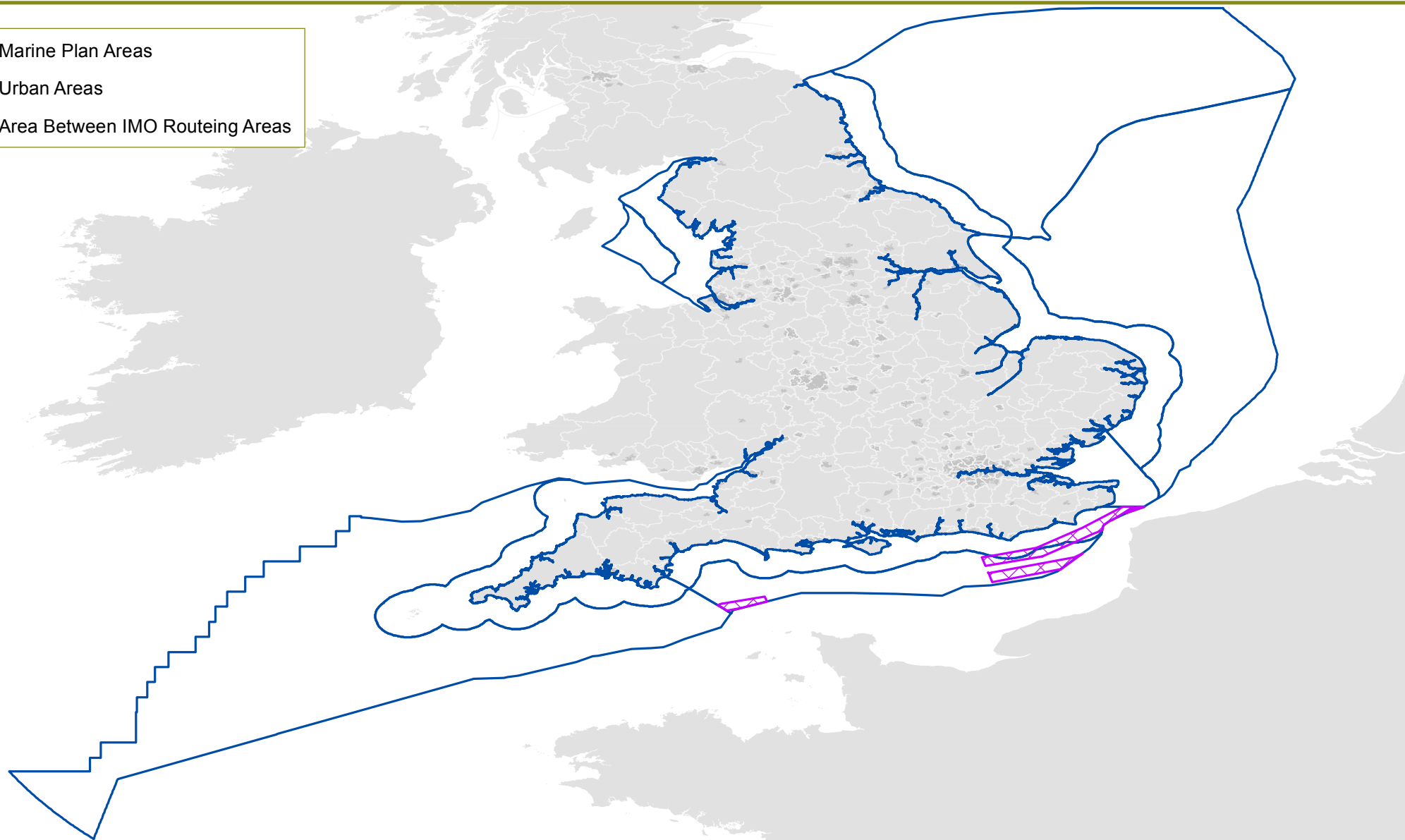
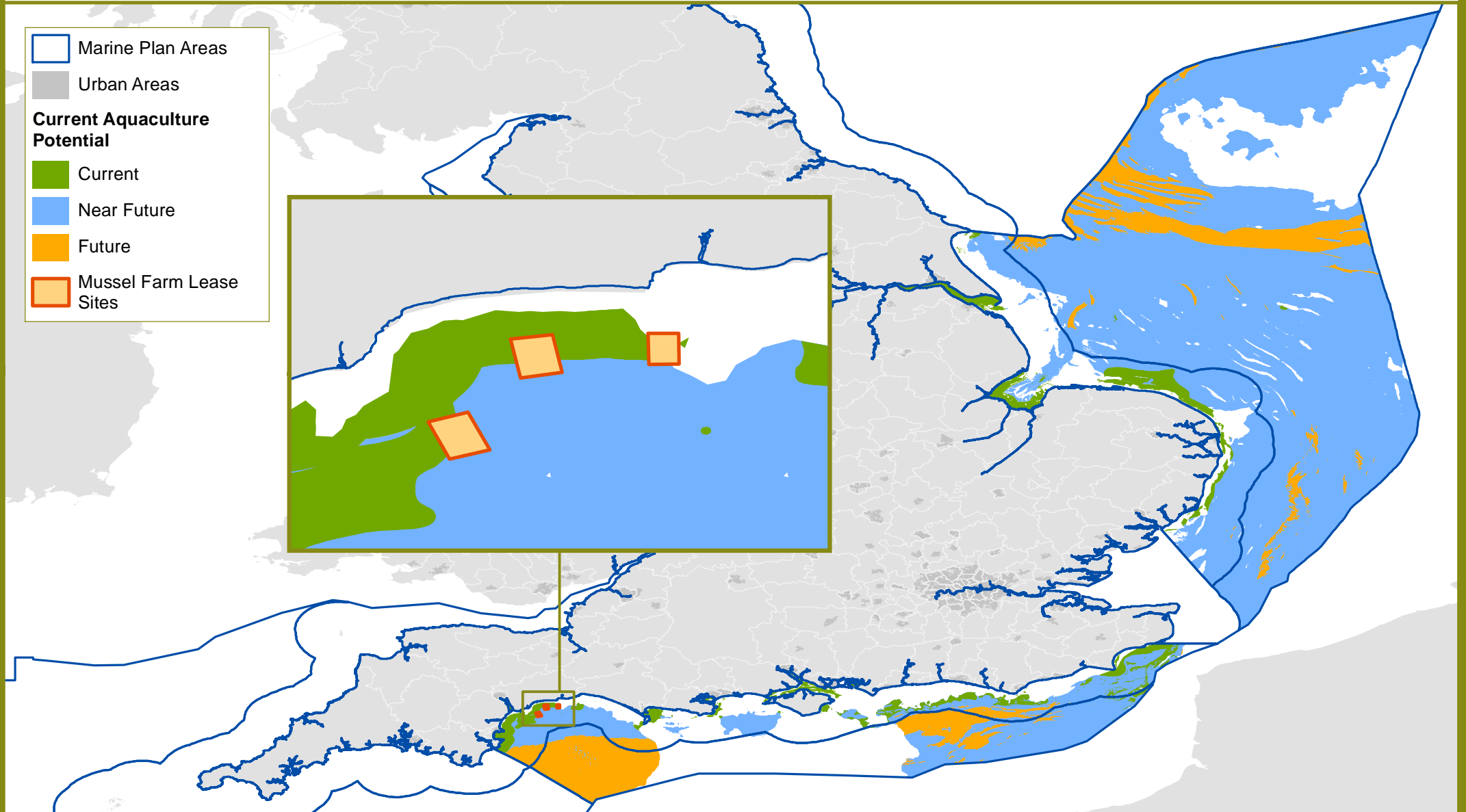


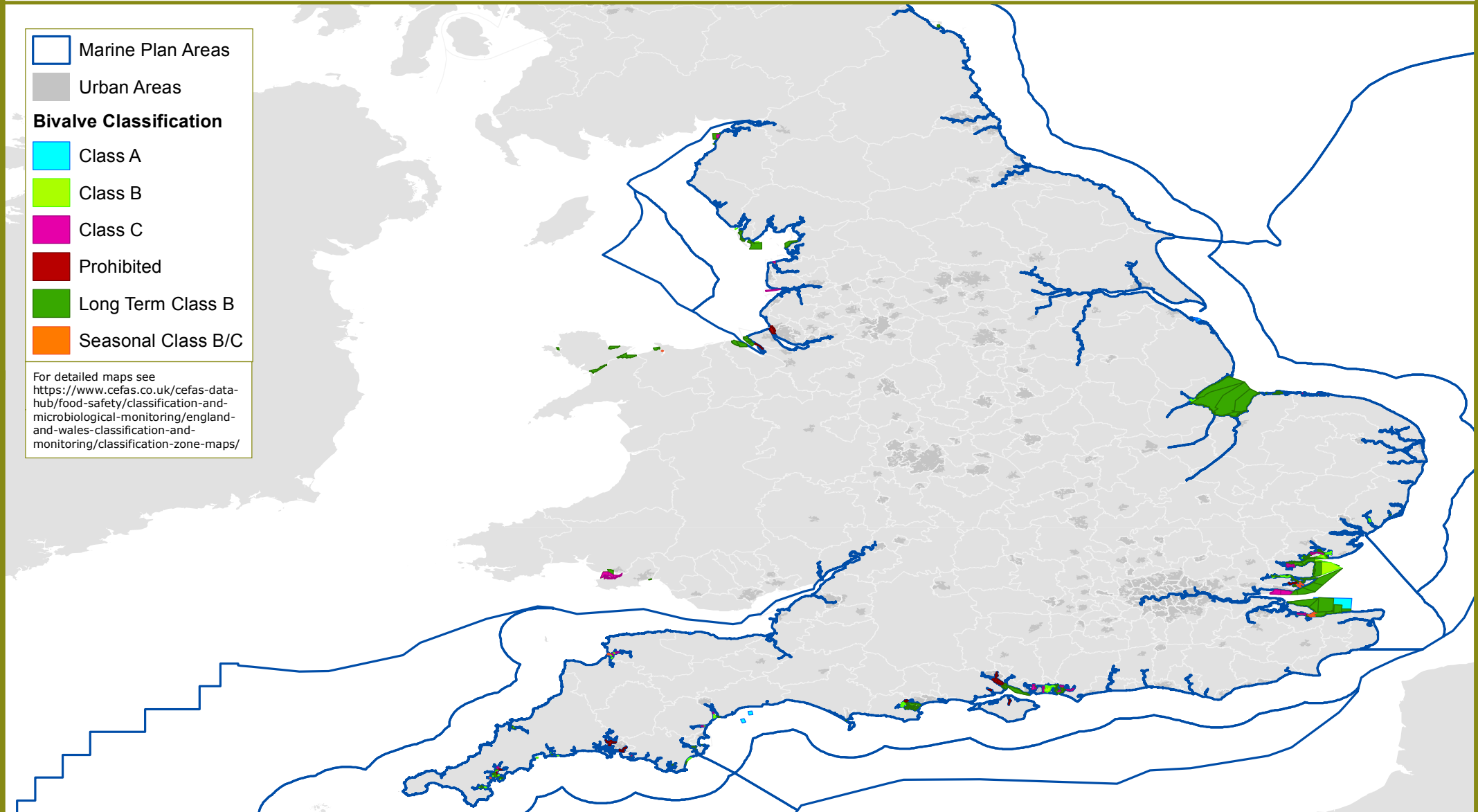


Figure 8.3: Current Aquaculture Potential and Mussel Farm Lease Sites (included as an example – this refers to the East Plan area and a small portion of the South Plan area) Coordinate System: GCS ETRS 1989 Not to be used for navigation.



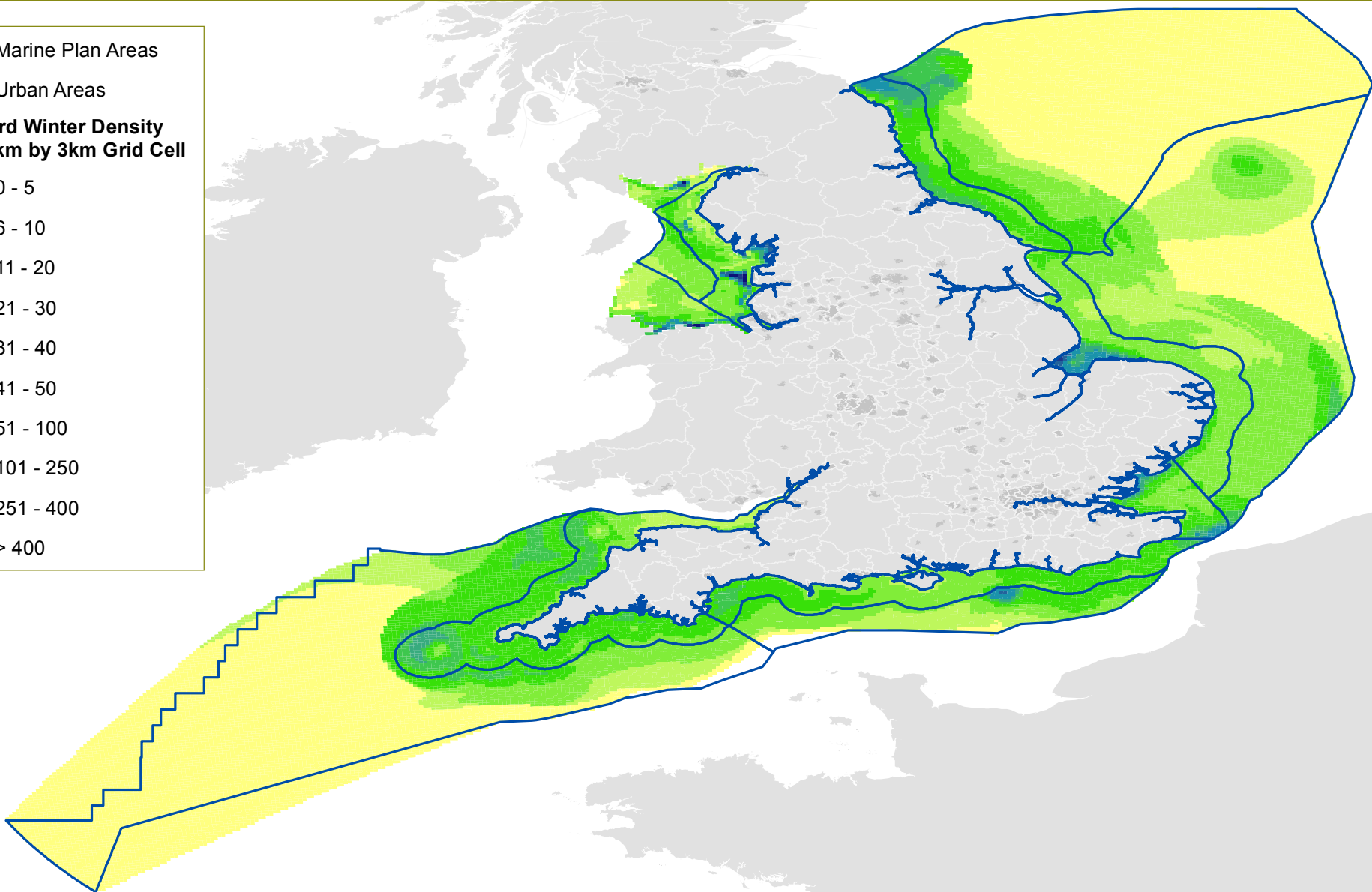
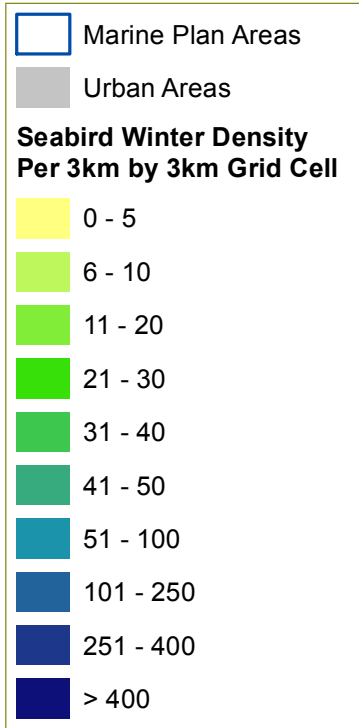
# Figure 8.4: Shellfisheries Bivalve Classification

Coordinate System: GCS ETRS 1989 Not to be used for navigation.



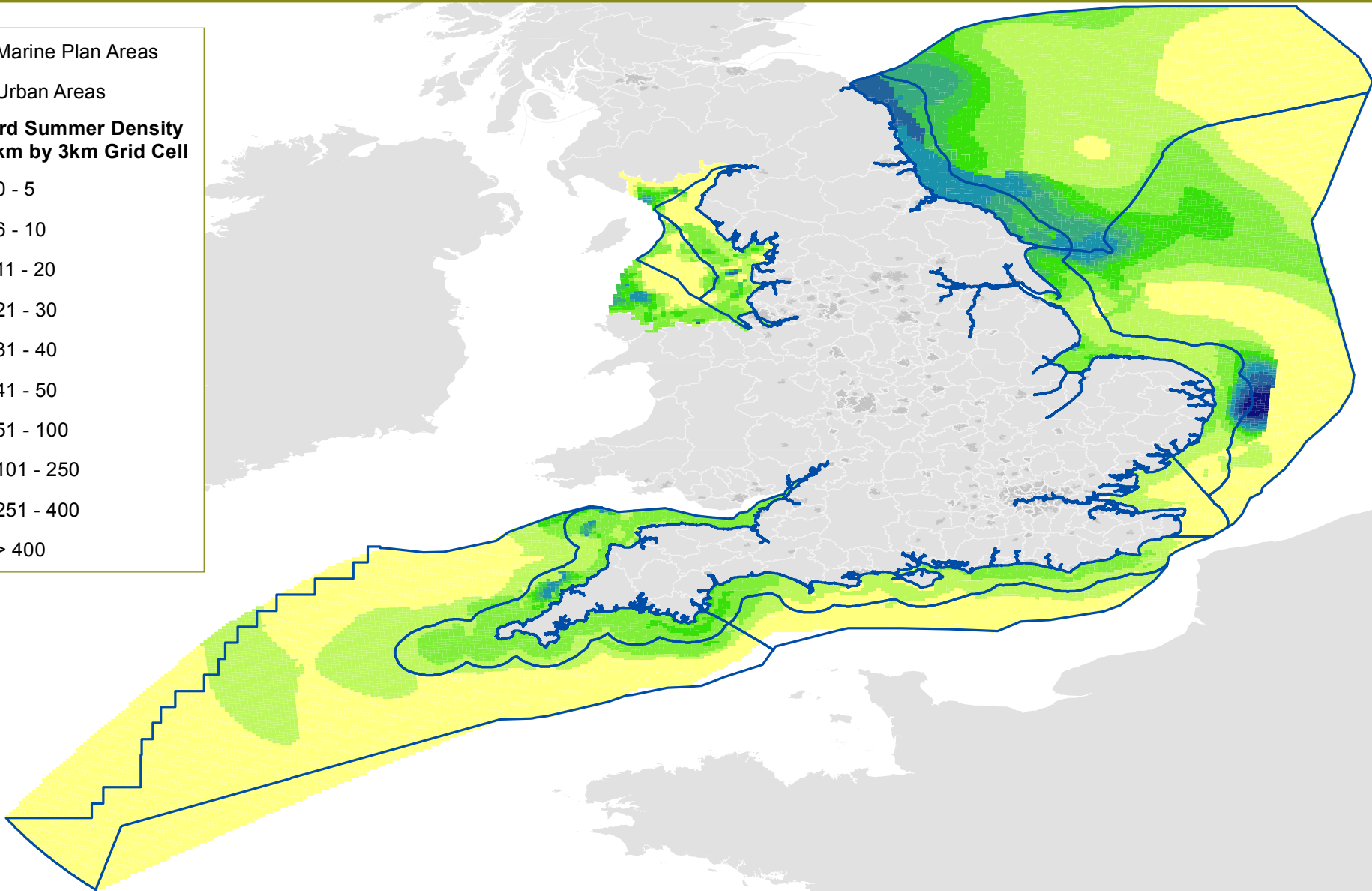
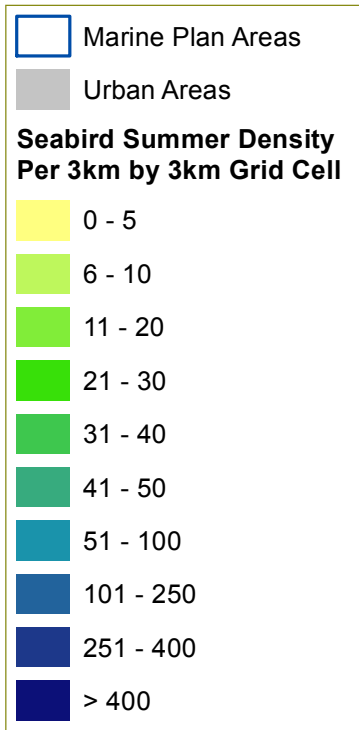
# Figure 9.1: Seabird Winter Density

Coordinate System: GCS ETRS 1989 Not to be used for navigation.



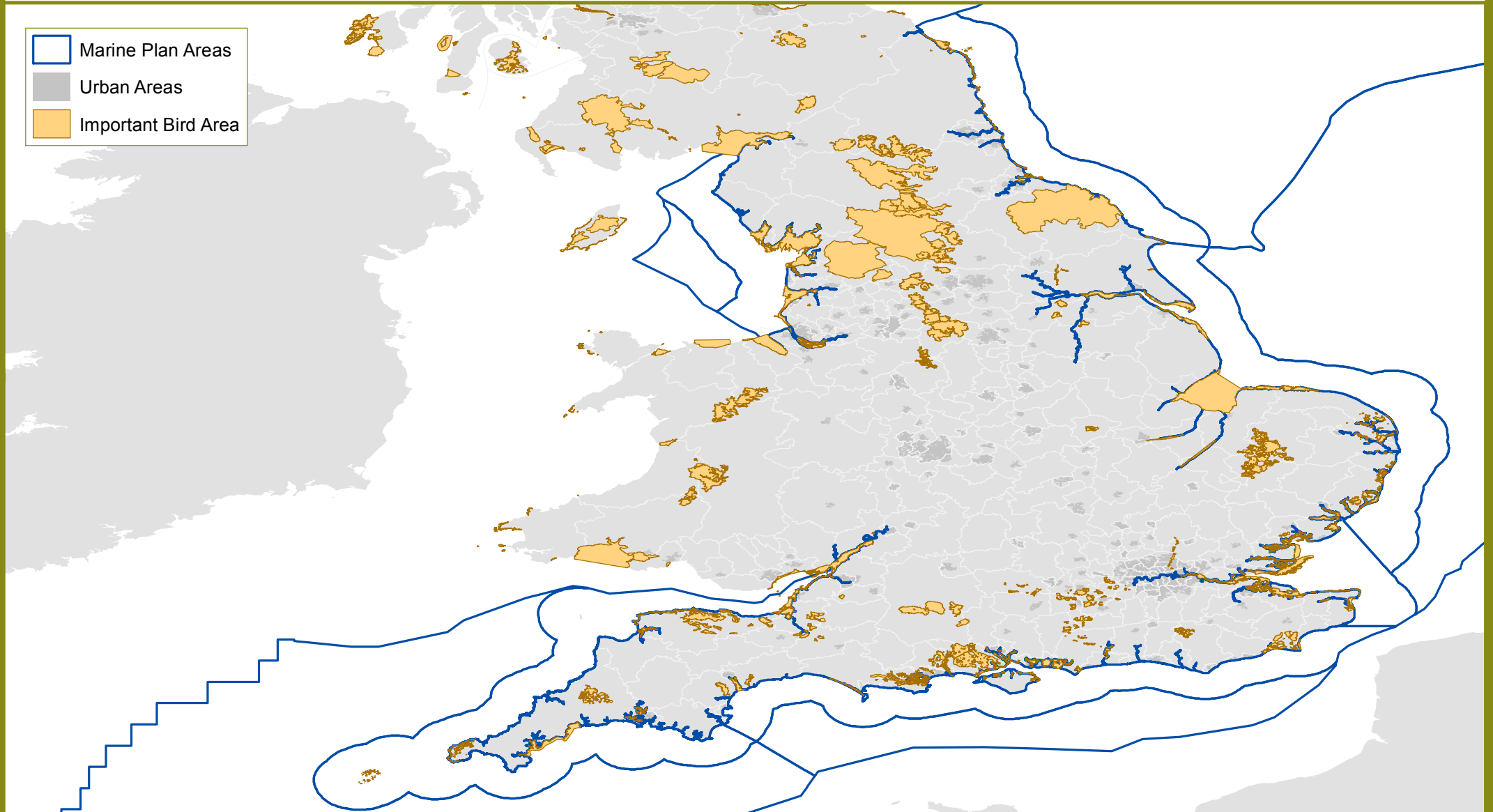
# Figure 9.2: Seabird Summer Density

Coordinate System: GCS ETRS 1989 Not to be used for navigation.



# Figure 9.3: Royal Society for the Protection of Birds - Important Bird Areas

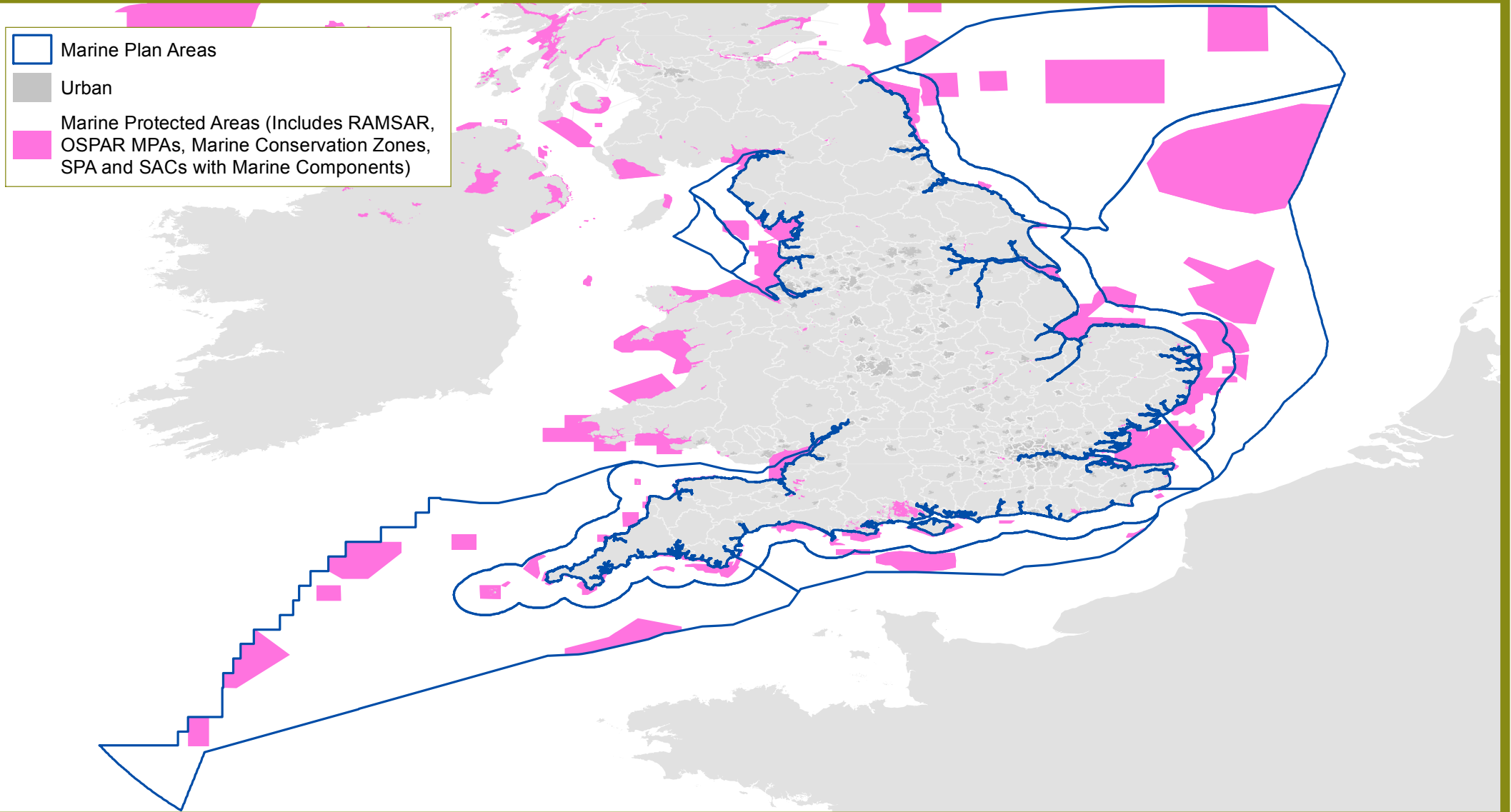
Coordinate System: GCS ETRS 1989 Not to be used for navigation.





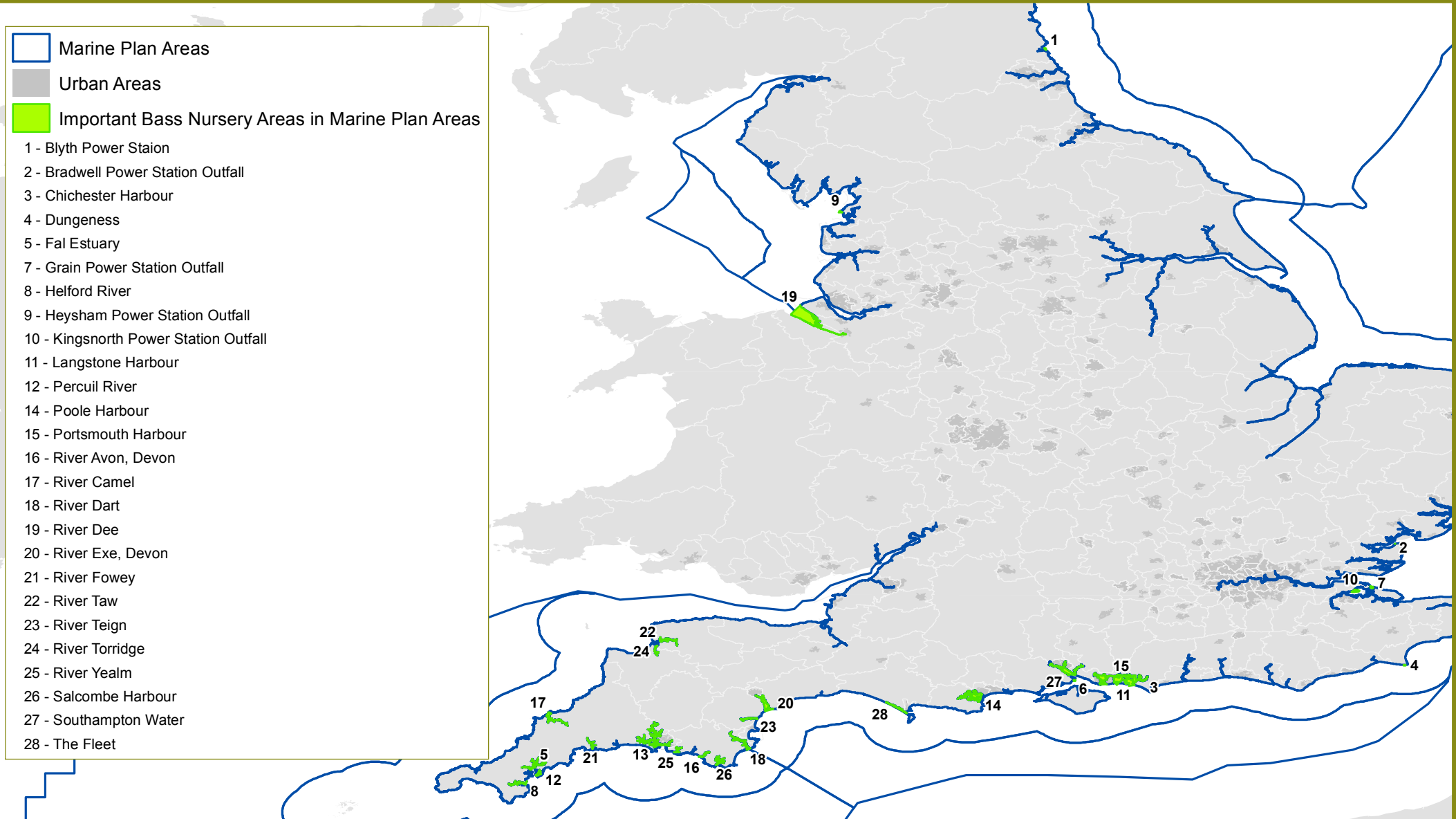
# Figure 9.4: Marine Protected Areas

Coordinate System: GCS ETRS 1989 Not to be used for navigation.



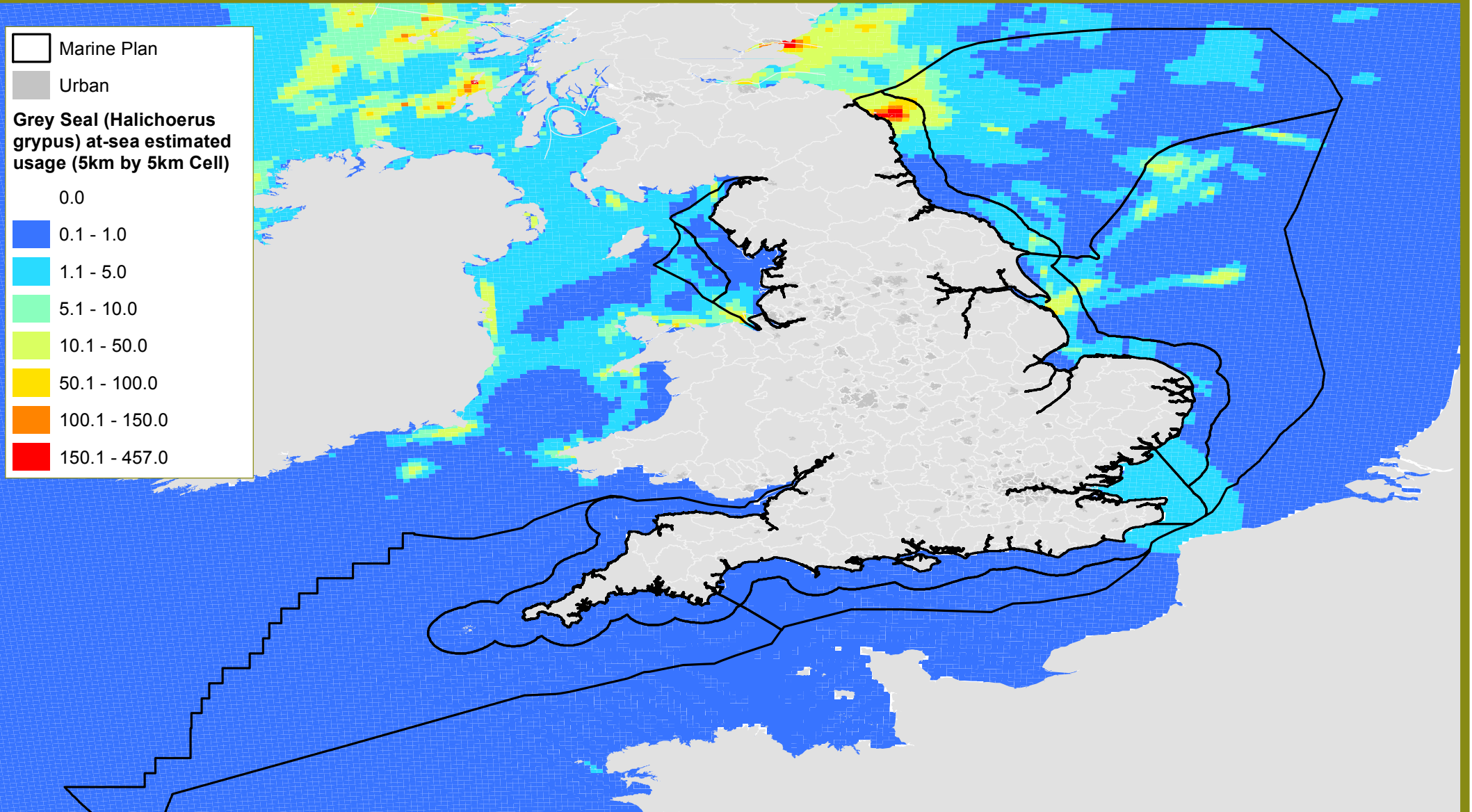
# Figure 9.5: Important Bass Nursery Areas in Marine Plan Areas

Coordinate System: GCS ETRS 1989 Not to be used for navigation.



# Figure 9.6: Grey Seal at Sea Usage

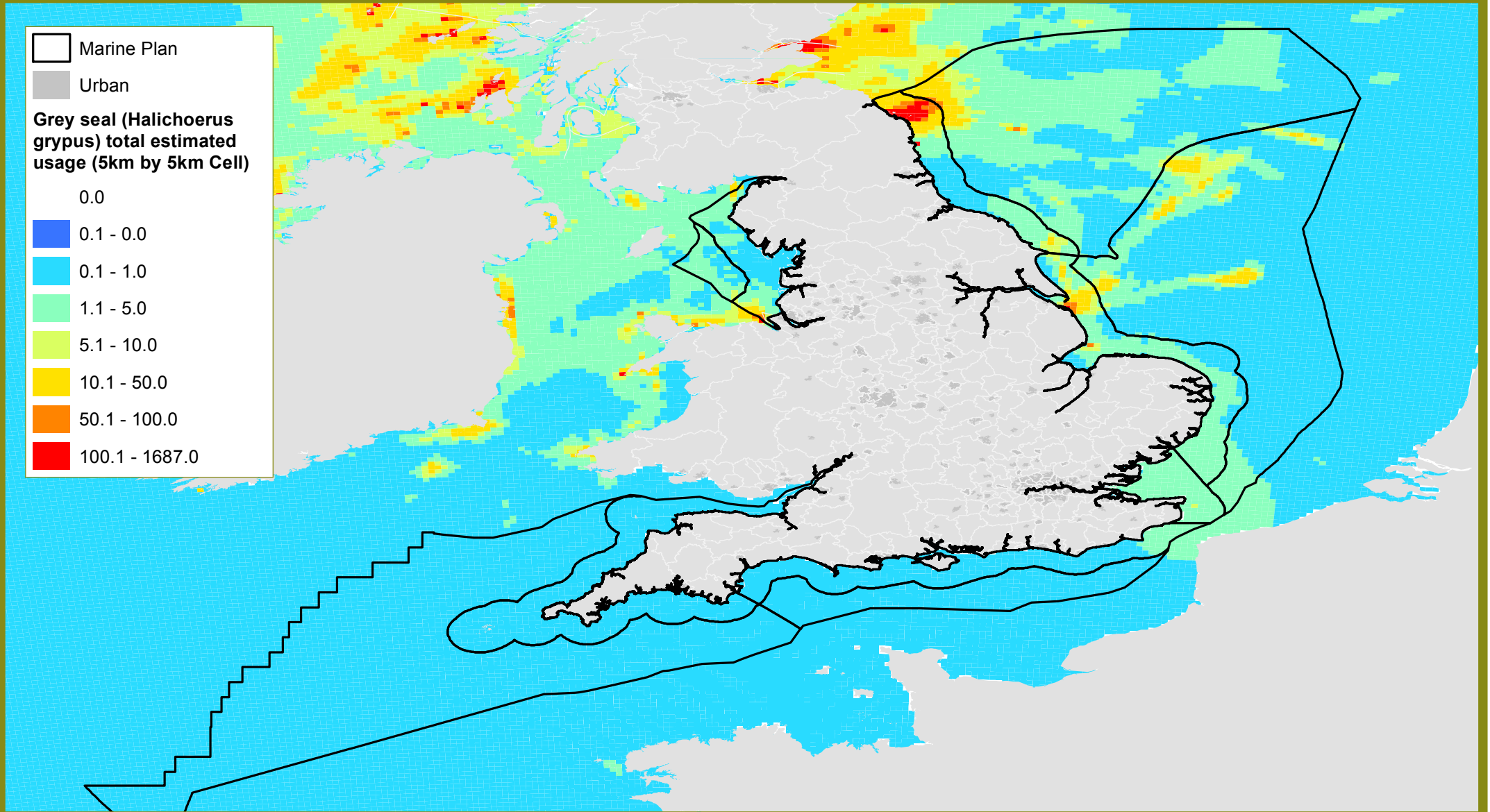
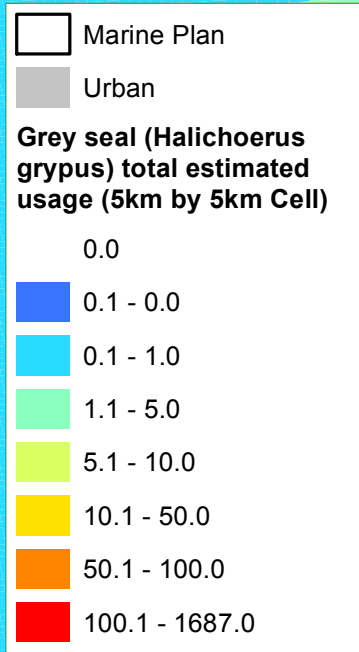
Coordinate System: GCS ETRS 1989 Not to be used for navigation.





# Figure 9.7: Grey Seal at Total Usage

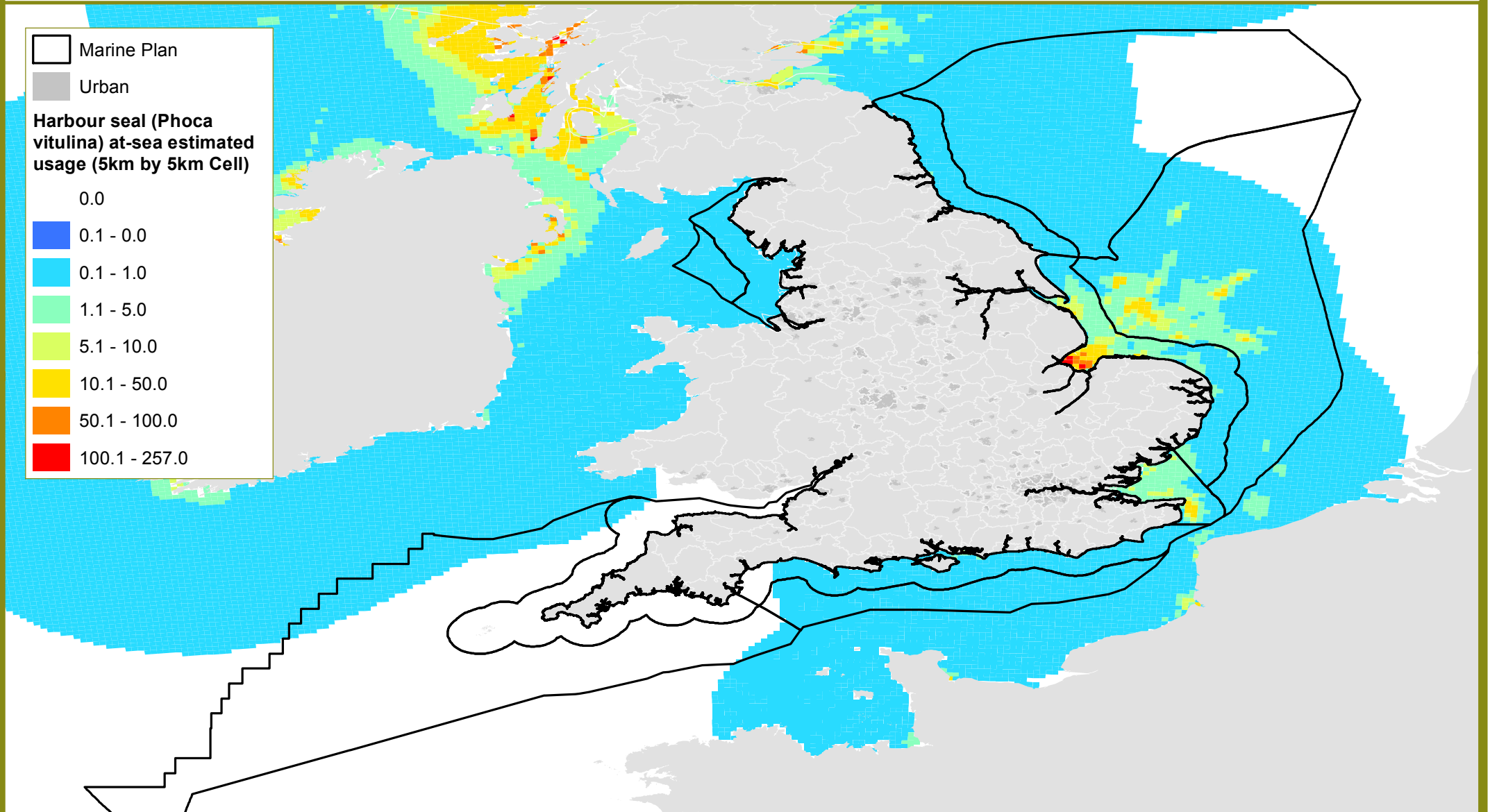
Coordinate System: GCS ETRS 1989 Not to be used for navigation.



Data from Grey and Harbour Seal Usage Maps report for Scottish Government 28/08/2013. Contains public sector information licensed under the Open Government Licence v3.0. Reproduced with permission of Marine Management Organisation. Contains Ordnance Survey Open Data. GSHHG is distributed under the GNU Lesser General Public License.

# Figure 9.8: Harbour Seal at Sea Usage

Coordinate System: GCS ETRS 1989 Not to be used for navigation.





# Figure 9.9: Harbour Seal Total Usage

Coordinate System: GCS ETRS 1989 Not to be used for navigation.

