



EC Type Examination Certificate Number: **0120/SGS0191**

Zelec France Espace Commercial Du Moulin
1652 Avenue Paul Jullien
13100 Le Tholonet
FRANCE

Instrument Identification:
EM1100 Series

Instrument Traceable Number
0120/SGS0191

Single Phase, Active Import/ Export (kWh), Multifunction, Indoor, Electricity Meter

has been assessed and certified as meeting the requirements of

EC Directive 2004/22/EC

Measuring Instruments Annex B

It is certified that the manufacturer's technical design and specimen for the above instrument has been examined and, based on the evidence submitted, it is considered that the instrument conforms to the requirements of MI-003 of EC Directive 2004/22/EC

This certificate must be used in conjunction with a certificate covering the product verification as required in Annex D or Annex F


This certificate is valid from 12 August 2015 to 15th April 2025
Issue 1

Certification is based on report number(s) SHES141200649301 16th April 2015
EMA 206865 dated 12th August 2015

Authorised Signature


SGS United Kingdom Limited, Notified Body 0120
Unit 202B Worle Parkway, Weston-super-Mare, BS22 6WA UK
t +44 (0)1934 522917 f +44 (0)1934 522137 www.sgs.com

Contact Address SGS United Kingdom Ltd, Units 12A & 12B, South Industrial Estate, Bowburn, Durham, DH6 5AD UK
t +44 (0)191 377 2000 f +44 (0)191 377 2020 www.sgs.com

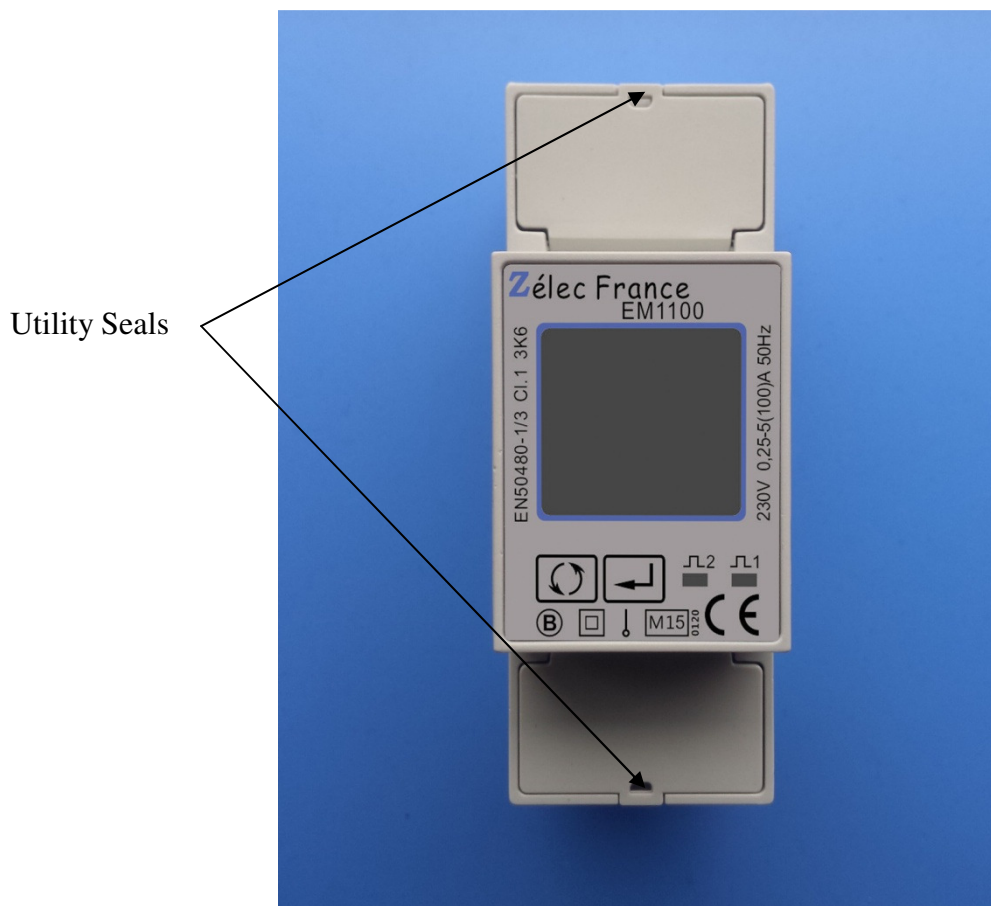
	EC-Type Examination Certificate Number:	
	0120/ SGS0191	
	Issue Number: 1	Dated: 12 th August 2015


1. Technical Data

Manufacturer	Zelec France Espace Commercial Du Moulin
Meter Type(s)	EM1100PURSMMT EM1100PURSM EM1100PUMBM EM1100PUM
Voltage Rating (U_n)	230V
Current Rating ($I_{min} - I_{ref} (I_{max})$)	0.25-5(100)A, 0.25-10(100)A
Frequency (F_n)	50Hz
Active Accuracy Class (kWh)	A or B (kWh)
Type of circuit	1p2w
Temperature Range	-25°C to +55°C
Software Version No.	V1.2
Identification Location	Nameplate
Bill Of Materials No.'s	SDM220-MT V1.5 SDM220-Modbus V1.5 SDM220-Mbus V1.5 SDM220-Pulse V1.5
IP Rating	IP51
Insulation Protective Class	Class II
LED Pulse Constant	1000imp/ kWh
Impulse Voltage Rating	6kV
AC Voltage Rating	4kV
Main Cover Sealing Type	2 x Wire & Crimp
Integrity of meter	Inaccessible without breaking seals
Intended Location of the Meter	Indoor
Type of Register	LCD

	EC-Type Examination Certificate Number:	
	0120/ SGS0191	
	Issue Number: 1	Dated: 12 th August 2015

2. Photograph of Meter and Sealing Plan



	EC-Type Examination Certificate Number:	
	0120/ SGS0191	
	Issue Number: 1	Dated: 12 th August 2015

3. Influence factors for temperature, frequency and voltage


Current	PF Cos	-25	-10	5	30	40	55
I _{min}	1.0	0.30	0.28	0.25	0.23	0.24	0.23
I _{tr}	1.0	0.17	0.15	0.16	0.13	0.13	0.13
10I _{tr}	1.0	0.07	0.08	0.08	0.05	0.07	0.10
I _{max}	1.0	0.13	0.11	0.05	0.04	0.04	0.04
I _{tr}	0.5ind	0.27	0.24	0.24	0.21	0.21	0.23
10I _{tr}	0.5ind	0.16	0.16	0.17	0.16	0.16	0.17
I _{max}	0.5ind	0.06	0.04	0.05	0.11	0.11	0.09
I _{tr}	0.8cap	0.24	0.24	0.22	0.19	0.19	0.19
10I _{tr}	0.8cap	0.06	0.07	0.07	0.05	0.07	0.08
I _{max}	0.8cap	0.13	0.09	0.04	0.03	0.03	0.03

During the type approval examination the influence factors for temperature, frequency and voltage are determined per load point. The table above represents the sum of the square values per load, determined via the following formula:-

$$\delta e(T, U, f) = \sqrt{(\delta e^2(T, I, \cos\phi) + \delta e^2(U, I, \cos\phi) + \delta e^2(f, I, \cos\phi))}$$

where

$\delta e(T, I, \cos\phi) =$ Additional error due to variation of the temperature at the same load
 $\delta e(U, I, \cos\phi) =$ Additional error due to variation of the voltage at the same load
 $\delta e(f, I, \cos\phi) =$ Additional error due to variation of the frequency at the same load

	EC-Type Examination Certificate Number:	
	0120/ SGS0191	
	Issue Number: 1	Dated: 12 th August 2015

4. Annex of Variants

Product Variant Identification Details:

Type Designation	Description of meter
EM1100PURSMMT	Multi tariff, single phase, multi function, RS485 Modbus
EM1100PURSM:	Single tariff, single phase, multi function, RS485 Modbus
EMPUMBM:	Single tariff, single phase, multi function, Mbus
EM1100PUM:	Single tariff, single phase, multi function, pulse

Modifications to the meter(s) described according to approval No.**0120/ SGS0191** must be notified to the issuing body to confirm the meter(s) continuing compliance to the relevant pattern approval standard(s).

5. Document Revision History

Issue	Date	Comments
1	12/08/2015	Initial Issue