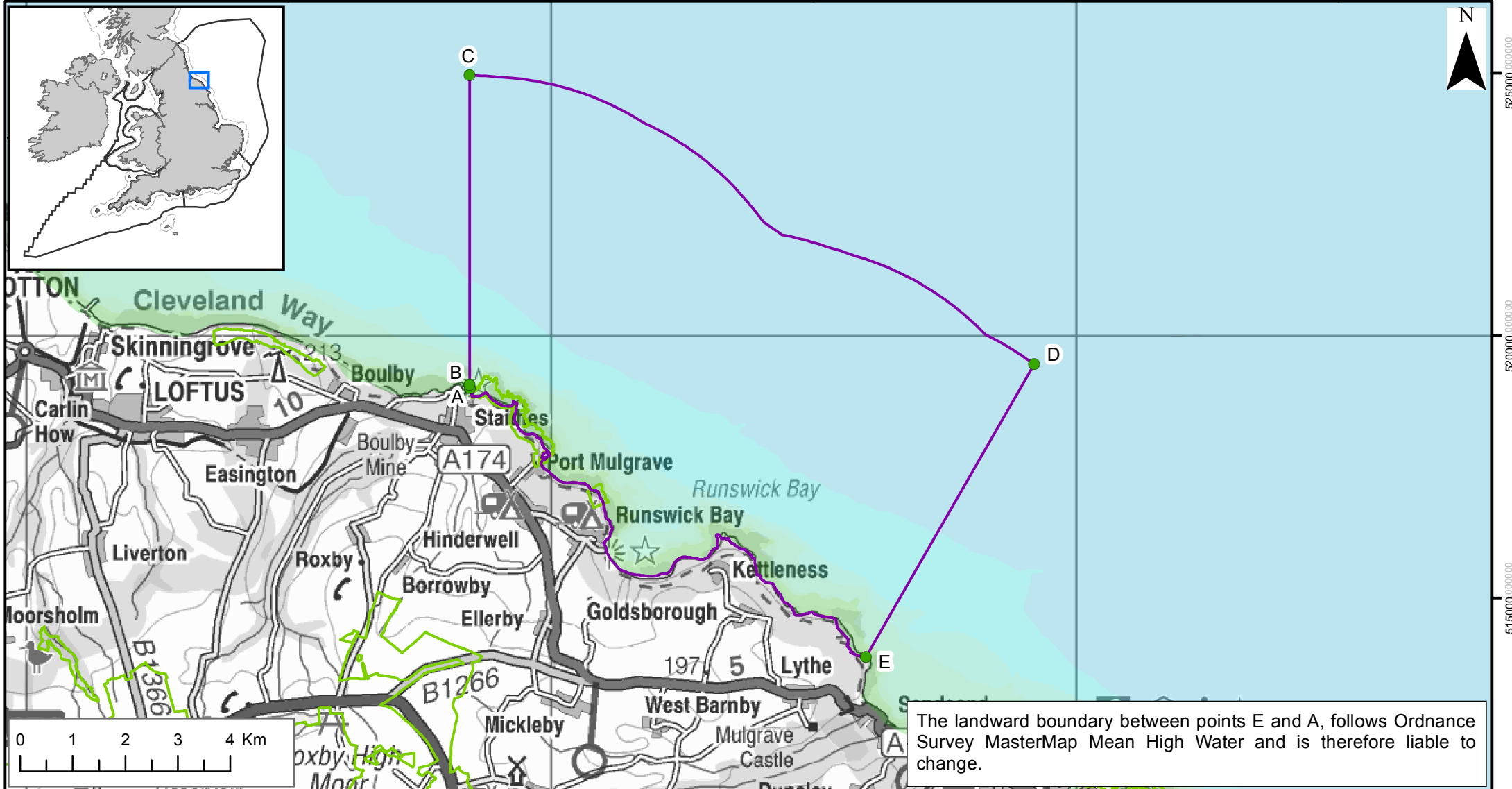


470000.000000 475000.000000 480000.000000 485000.000000 490000.000000 495000.000000



The landward boundary between points E and A, follows Ordnance Survey MasterMap Mean High Water and is therefore liable to change.

Runswick Bay rMCZ Boundary

- Recommended MCZ
- Regional MCZ project area
- MCZ boundary co-ordinates
- 12nM Territorial Seas Limit
- Land

SSSIs

Point	Lat	Long
A	54° 33' 36.451" N	0° 47' 17.600" W
B	54° 33' 38.810" N	0° 47' 18.096" W
C	54° 36' 49.290" N	0° 47' 12.411" W
D	54° 33' 44.858" N	0° 37' 19.217" W
E	54° 30' 46.436" N	0° 40' 23.521" W

Depth Areas (metres)	
-20.0 - -10.0	25.1 - 50.0
-9.9 - -5.0	50.1 - 100.0
-4.9 - 0.0	100.1 - 250.0
0.1 - 5.0	250.1 - 500.0
5.1 - 10.0	500.1 - 1000.0
10.1 - 25.0	

Contains information from the Ordnance Survey © Crown Copyright and database right 2014. Ordnance Survey 100022021. UKHO Data © British Crown Copyright. All rights reserved. Permission Number Defra012014.001. This product has been derived in part from material obtained from the UK Hydrographic Office with the permission of the Controller of Her Majesty's Stationery Office and UK Hydrographic Office (www.ukho.gov.uk). NOT TO BE USED FOR NAVIGATION. Map produced by Natural England 2014. Reference: Theme ID: 1477570 Map Projection: British National Grid