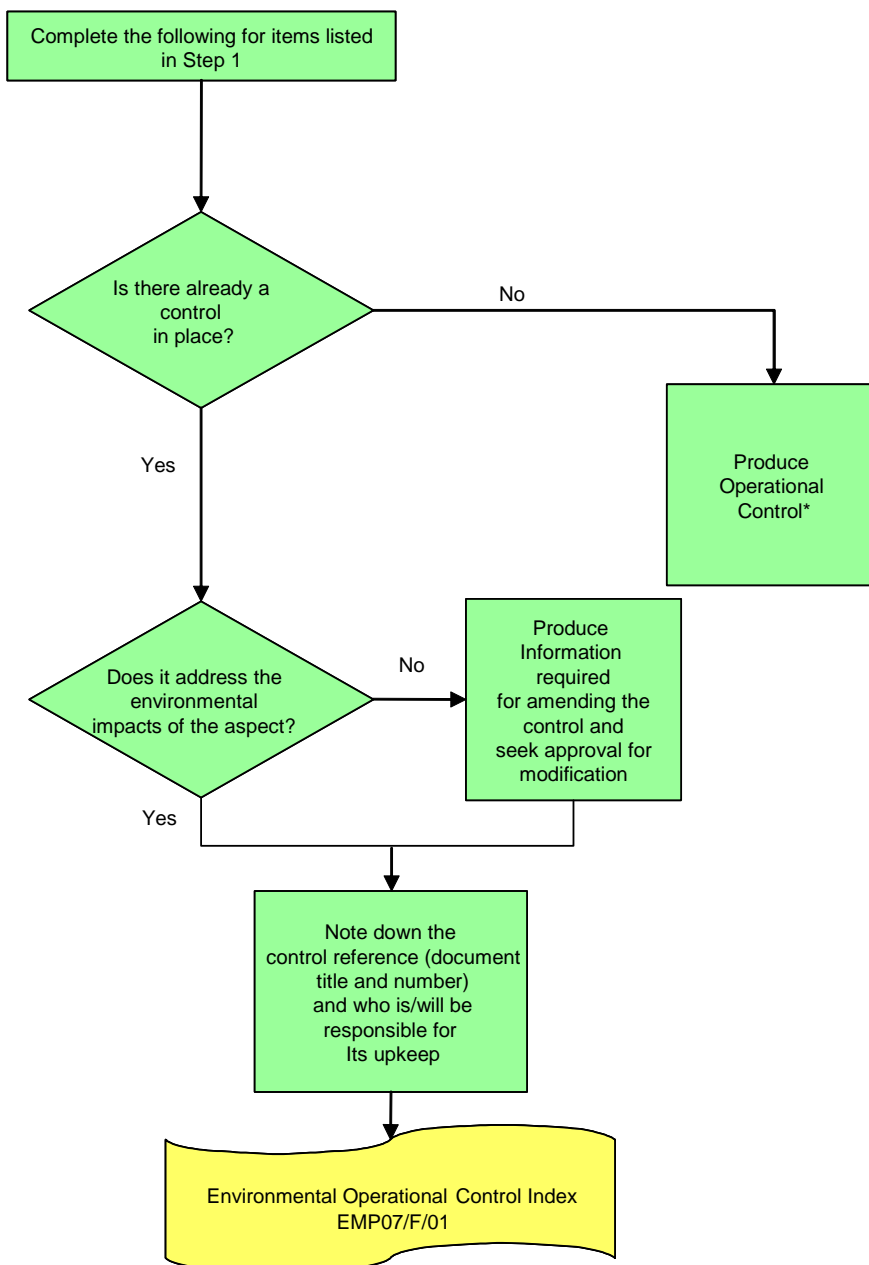


| | | |
|------------------------------------|-----------------------|-------------------------|
| MOD | EMS Procedures | Procedure EMP07/G/01 |
| EMP07: Operational Controls | | Page 1 |

Guidance Sheet EMP07/G/01 – Operational Control Decision Tree



* Where practical combine EMS control requirements with any other controls which need to be developed for the project (i.e. operating manuals, Health and Safety Procedures).

| | | | |
|----------|-------------------------|--------------|---------------|
| Issue | Authorised by CESO DE&S | ISSUE LEVEL: | Release V2.2e |
| Approval | Authorised by DG S&E | DATE: | November 2007 |