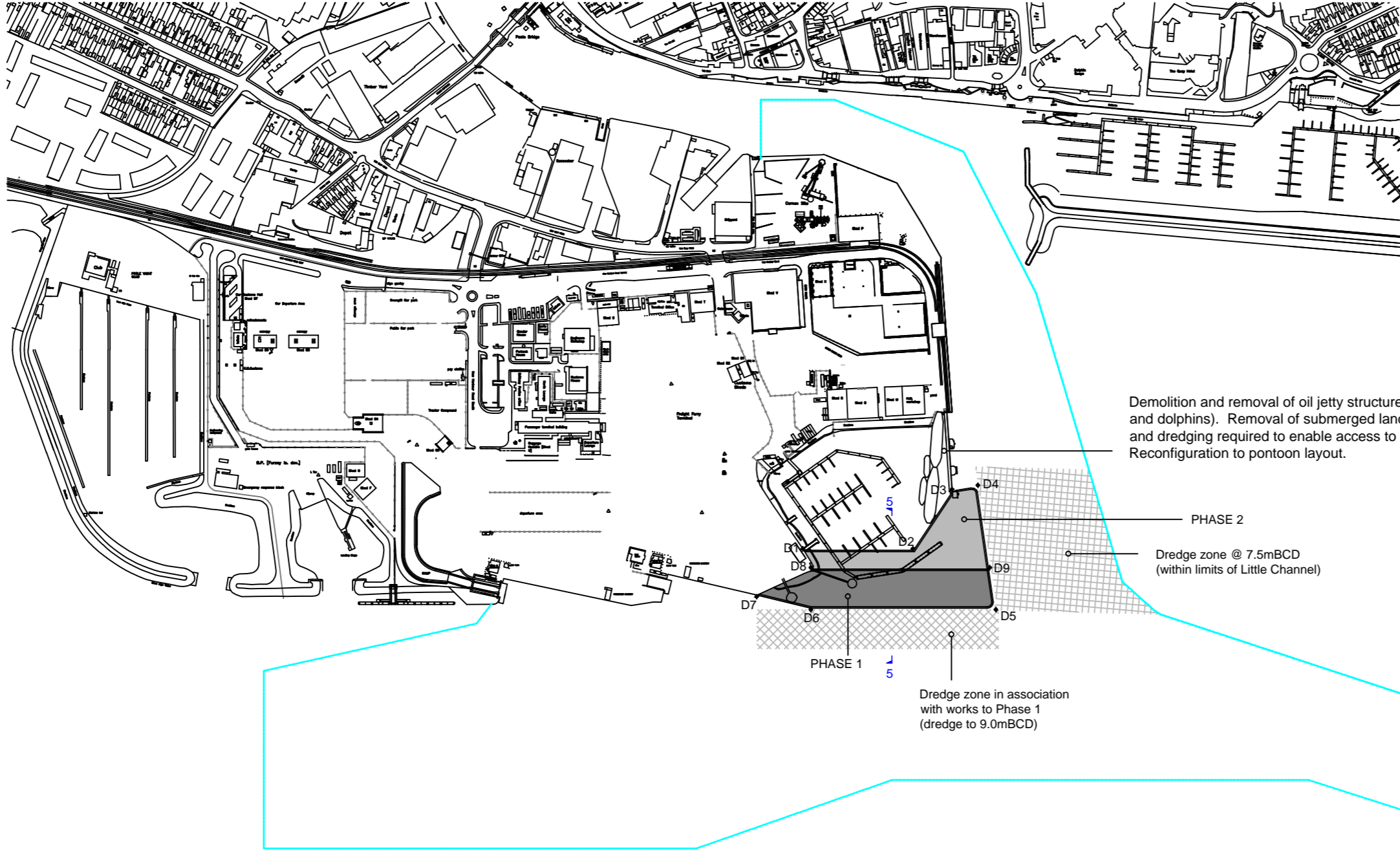
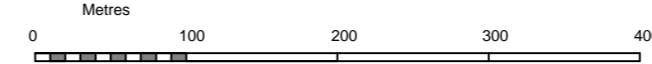




Layout Plan
Scale 1:5000



Based upon Ordnance Survey Map with the sanction of the Controller of H.M. Stationery Office



LEGEND

Denotes maintained Channels

Summary Description of Proposed Works

PHASE 1
Development of 'South Quay' by reclamation of circa 8,000m² of Harbour bed to create 180 linear metres of berthing face to south facing quay.
Design layout allows for retention of Port of Poole Marina through minor pontoon reconfiguration

PHASE 2
Extension to 'South Quay' by reclamation of a further (circa) 7,000m² of Harbour bed to create 120 linear metres of berthing face to east facing quay and an enhanced shore side Port operational area.
Existing oil jetty berth removed to enable access to marina.
Design layout impacts on Port of Poole Marina (reduction in capacity) through pontoon reconfiguration.

Setting Out Points

D1	50 42.467N, 001 59.309W
D2	50 42.468N, 001 59.214W
D3	50 42.500N, 001 59.180W
D4	50 42.503N, 001 59.157W
D5	50 42.434N, 001 59.142W
D6	50 42.434N, 001 59.302W
D7	50 42.441N, 001 59.349W
D8	50 42.457N, 001 59.302W
D9	50 42.457N, 001 59.147W

NOTES
1. Building and land uses shown are indicative only.

THE POOLE HARBOUR (WORKS) REVISION ORDER 2015

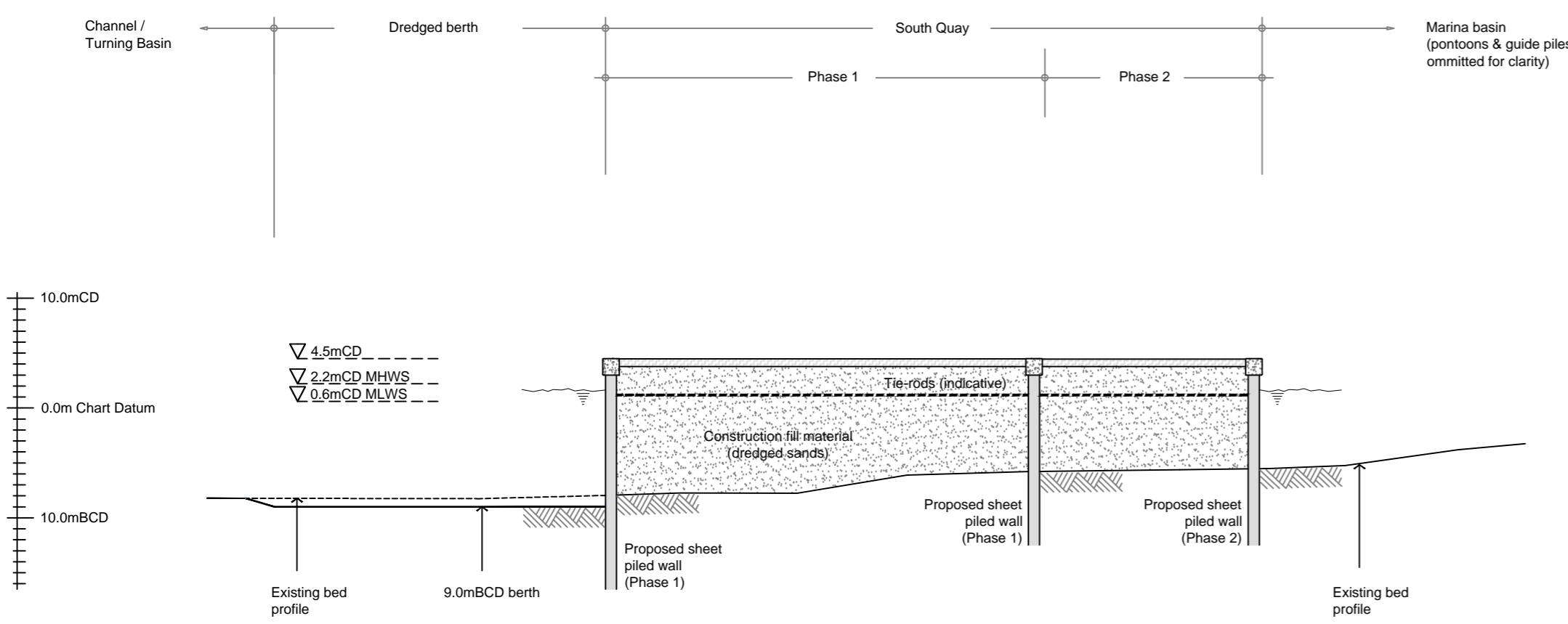
PLANS AND SECTIONS REFERRED TO IN THE POOLE HARBOUR (WORKS) REVISION ORDER 2015

I HEREBY CERTIFY THAT THESE ARE THE DEPOSITED PLANS AND SECTIONS REFERRED TO IN ARTICLES 3 AND 4 OF THE POOLE HARBOUR (WORKS) REVISION ORDER 2015

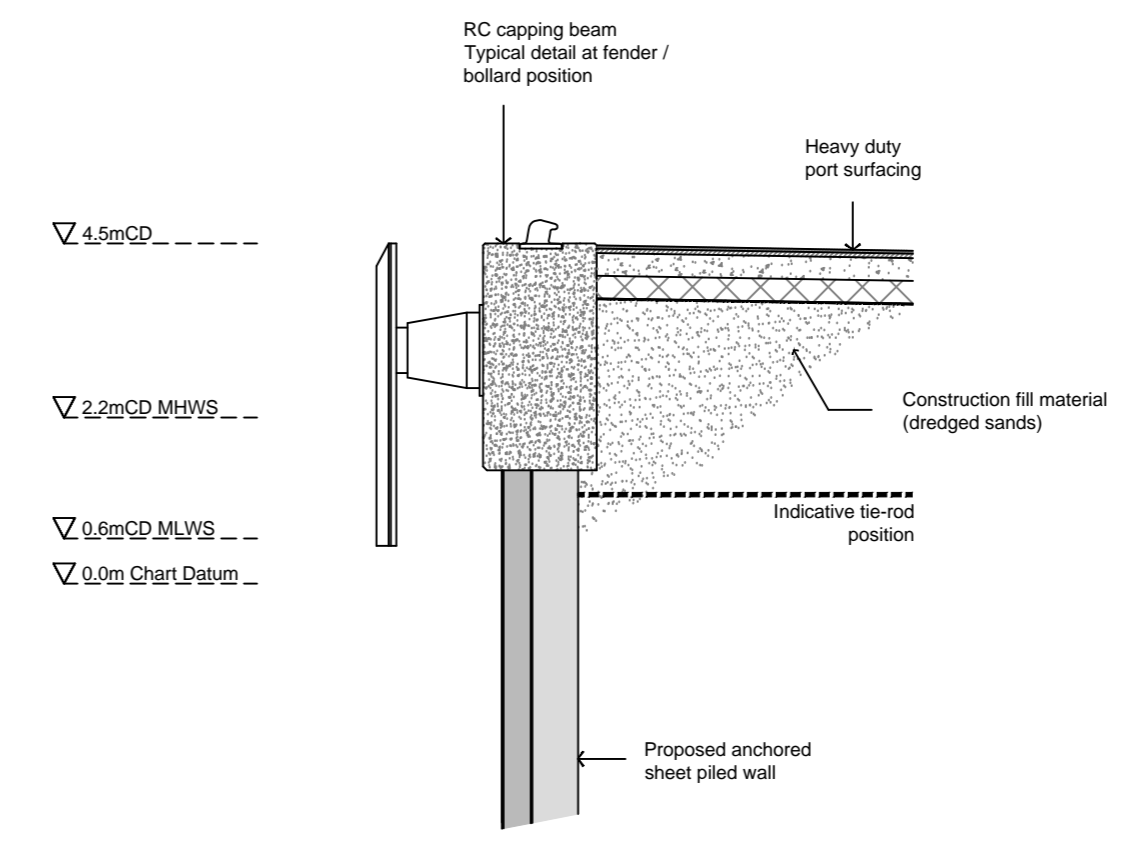
DATE..... SIGNED.....

CHIEF EXECUTIVE OF THE MARINE MANAGEMENT ORGANISATION

Section 5-5
Scale 1:500



South Quay detail
(section at fender)
Scale 1:100



revision	amendment	date
----------	-----------	------

POOLE HARBOUR COMMISSIONERS

The Poole Harbour (Works) Revision Order 2015 PHASE 1 & 2 WORKS	drawn pba
	date 20.01.2014
	scale as stated @ A2
Andy Ramsbottom MSc CEng MICE Harbour Engineer Harbour Office, 20 New Quay Road Hamworthy, Poole, Dorset. BH15 4AF	drawing no. HRO2

phc