

## EXHIBIT LIST

Reference No: HOL/10018

Petitioner: EUSTON STANDARD PACK

Published to Collaboration Area: Monday 03-Oct-2016

Page 1 of 83

No	Exhibit Name	Page
1	<a href="#">P2279_Community Engagement Presentation.pdf (P2279)</a>	2 - 38
2	<a href="#">P2280_HS2 in Euston Leaflet.pdf (P2280)</a>	39
3	<a href="#">P2281_HS2 in Euston Launch Leaflet.pdf (P2281)</a>	40 - 41
4	<a href="#">P2282_HS2 in Euston Postcard.pdf (P2282)</a>	42 - 43
5	<a href="#">P2283_Noise Insulation Scheme FAQ.pdf (P2283)</a>	44 - 47
6	<a href="#">P2284_Noise Insulation Scheme Leaflet.pdf (P2284)</a>	48 - 55
7	<a href="#">P2285_Noise Insulation Scheme Application Form.pdf (P2285)</a>	56
8	<a href="#">P2286_Noise Insulation Event Postcard pdf (P2286)</a>	57 - 58
9	<a href="#">P2287_Noise Insulation - sorry we missed you postcard pdf (P2287)</a>	59 - 60
10	<a href="#">P2288_May 2016 Information Event Leaflet pdf (P2288)</a>	61 - 62
11	<a href="#">P2289_NTH Demolition Information Leaflet.pdf (P2289)</a>	63 - 69
12	<a href="#">P2290_Community Open Evenings and Surgeries Leaflet.pdf (P2290)</a>	70 - 71
13	<a href="#">P2291_HS2 Summer Newsletter.pdf (P2291)</a>	72 - 75
14	<a href="#">P3261 HS2 Autumn newsletter.pdf (P3261)</a>	76 - 79
15	<a href="#">P2292_Letter from Roger Hargreaves to Euston petitioners.pdf (P2292)</a>	80 - 83



# Euston Community Engagement

---

# Community Engagement on AP3 - 2014/15

---

- Community engagement programme on development of AP3 proposals for Euston station included:
  - Discussions with community representatives on how they wanted to be engaged;
  - Community round table meetings;
  - Euston Community Representative Group (ECRG) meetings from May 2015;
  - Meetings with ECRG sub-groups;
  - Community walkabouts (Drummond Street, Camden Cutting, north of Parkway);
  - Community information sessions on the draft CoCP and Environmental Controls, train speed, station design, compensation, construction noise, hybrid Bill and petitioning, and traffic and transport;
  - Passenger leafleting at Euston station; and
  - Pre-deposit information events.

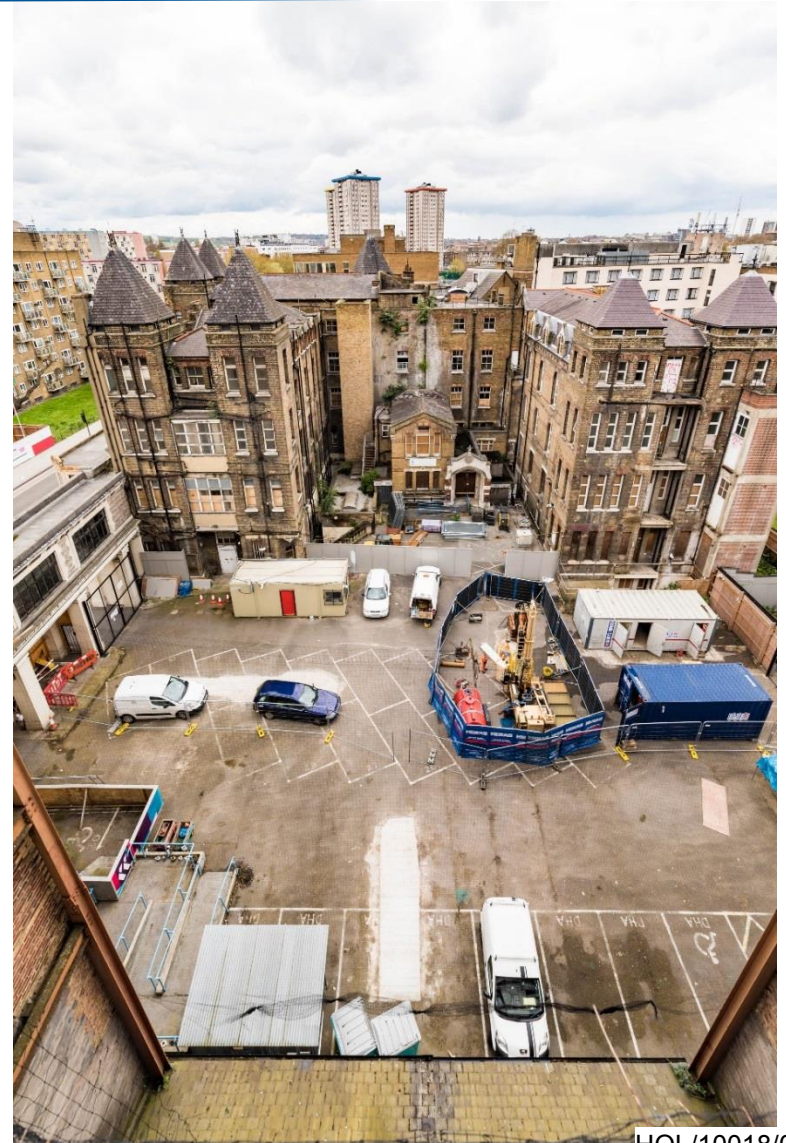
# Euston Engagement Staff

---

- Three full time engagement staff specifically for the Euston area.
- This is in addition to a dedicated team responsible for Euston individual and community petitioners for the last three years.
- HS2 Ltd is also recruiting a senior manager dedicated to engagement and community relations for the London Borough of Camden.

# HS2 in Euston at National Temperance Hospital Site

- Disused site of the former National Temperance Hospital acquired by HS2 Ltd for use as construction compound during construction phase.
- Part of the site was redeveloped for use as:
  - HS2 in Euston, a community drop-in centre; and
  - The Collective, a Camden Town Unlimited backed initiative that offers workspace for local start-up companies in creative industries.



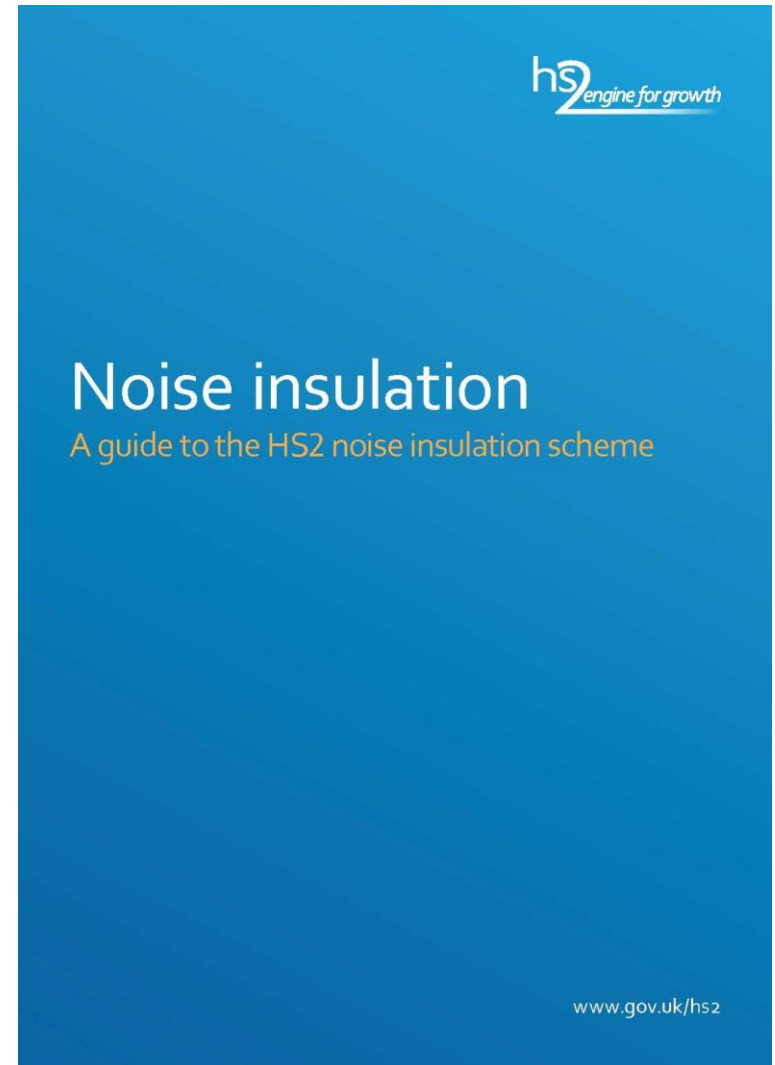
# HS2 in Euston

- Opened in February 2016.
- Information drop-in centre for local residents
  - First dedicated drop in area anywhere along the route.
- Open Tuesday to Friday and first Saturday of each month.
- Current opening hours:
  - Tuesday, Wednesday, Friday: 10:00 - 16:00
  - Thursday: 14:00 - 20:00
  - Saturday (first of the month): 10:00 - 14:00
- Managed by dedicated HS2 Ltd staff.
- Used to hold information events and drop-ins from the community.
- Hosts meetings between residents and HS2 Ltd technical experts.



# Noise Insulation Scheme Engagement

- In Spring 2016, HS2 Ltd undertook targeted engagement to raise awareness of the noise insulation scheme and to encourage potentially eligible residents to return application forms.
- Engagement began with noise insulation information packs being sent to 1,300 properties that had been identified as potentially requiring noise insulation during construction.
- Packs were sent between 30 March and 4 April 2016.
- Invitations for engagement events were sent to the 1,300 properties between 18 and 23 April.
- Properties that had not returned application forms received a follow up letter between 25 and 30 April.



# Noise Insulation Scheme Engagement

---

- During May 2016, HS2 Ltd undertook a “door knocking” exercise specifically targeted at those properties which had been recorded as not having responded to previous communications regarding the noise insulation scheme.
- The aim was to make sure the residents were aware of the scheme and to encourage them to return their application forms.
- The exercise was conducted over four days on:
  - Wednesday 11 May: 10:00 - 12:00
  - Thursday 12 May: 10:00 - 12:00 & 14:00 - 16:00
  - Friday 13 May: 10:00 - 12:00 & 14:00 - 16:00
  - Saturday 14 May: 10am – 12pm
- 608 properties were visited, including properties in: Cartmel House, Coniston House, Langdale House, Augustus House, Ambleside House, Cubitt Court, Park Village East, Ampthill Square Estate (Calgarth, Glenridding, Brathay, Mickledore, Stockbeck and Beckfoot), Mornington Street and Mornington Terrace.
- HS2 Ltd representatives had face-to-face conversations with 144 residents (23% of the properties called on).
- Properties where there was no answer received a “sorry we missed you” card that explained why they had been called on and reminded residents of the upcoming noise insulation drop-in events.



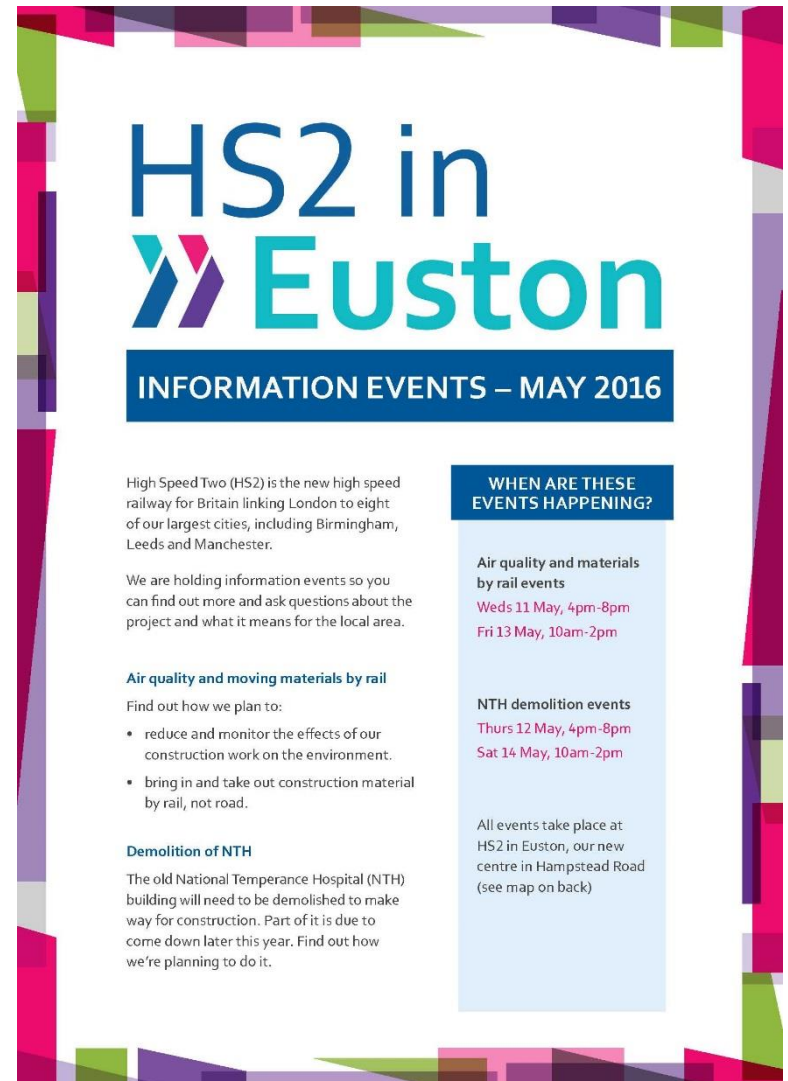
# Noise Insulation Scheme Engagement

---

- HS2 Ltd hosted two noise insulation drop-in events at HS2 in Euston on:
  - Thursday 19 May 2016: 16:00 - 20:00
  - Saturday 21 May 2016: 11:00 - 15:00
- 54 people visited across the two events.
- The events gave the community the opportunity to speak to noise insulation experts, hear more about the schemes on offer, see examples of secondary glazing and a ventilation unit, and to have their questions answered.

# Material by Rail and Air Quality Information Event

- During the House of Commons Select Committee proceedings, the Promoter gave an assurance to LB Camden to explore the use of rail to transport excavated and construction materials to and from Euston station.
- In line with that assurance, HS2 Ltd prepared a report on possible options for the ESSRB. Whilst that work was ongoing, HS2 Ltd held two community events on air quality and material by rail at HS2 in Euston.
- Leaflets were sent out to 19,000 properties in the Euston area to advertise those events.



**HS2 in Euston**

**INFORMATION EVENTS – MAY 2016**

High Speed Two (HS2) is the new high speed railway for Britain linking London to eight of our largest cities, including Birmingham, Leeds and Manchester.

We are holding information events so you can find out more and ask questions about the project and what it means for the local area.

**Air quality and moving materials by rail**

Find out how we plan to:

- reduce and monitor the effects of our construction work on the environment.
- bring in and take out construction material by rail, not road.

**Demolition of NTH**

The old National Temperance Hospital (NTH) building will need to be demolished to make way for construction. Part of it is due to come down later this year. Find out how we're planning to do it.

**WHEN ARE THESE EVENTS HAPPENING?**

**Air quality and materials by rail events**

- Weds 11 May, 4pm-8pm
- Fri 13 May, 10am-2pm

**NTH demolition events**

- Thurs 12 May, 4pm-8pm
- Sat 14 May, 10am-2pm

All events take place at HS2 in Euston, our new centre in Hampstead Road (see map on back)

# Material by Rail and Air Quality Information Event

---

- The events were open to the public and were hosted on:
  - Wednesday 11 May 2016: 16:00 - 20:00
  - Friday 13 May 2016: 10:00 - 14:00
- 57 local residents attended across the two events.
- Those attending were able to hear more about how transporting materials by rail could work in practice and ask questions of HS2 Ltd technical experts.
- Attendees were encouraged to leave comments on comment cards, which were summarised, and in some cases addressed, in section 12 of the final report which was published on the Gov.uk website in July 2016.

# National Temperance Hospital Demolition Information Event

---

- The buildings on the National Temperance Hospital site have to be demolished as part of the HS2 scheme.
- HS2 Ltd received prior approval consent from LB Camden on 12 July 2016 for a two stage demolition of the former hospital.
- In order to explain the methodology and current plans, HS2 Ltd held two community information events.
- Leaflets were sent out to 19,000 properties in the Euston area to advertise the NTH demolition events, which were held the same week as the material by rail and air quality events.

# National Temperance Hospital Demolition Information Event

---

- The events were open to the public and were hosted on:
  - Thursday 12 May 2016: 16:00 - 20:00
  - Saturday 14 May 2016: 10:00 - 14:00
- 31 people attended across the two events.
- Those attending were able to hear about plans for demolishing the NTH and plans for its use during construction of HS2.
- Attendees were also able to ask questions of HS2 Ltd experts and construction staff.

# Construction Open Evenings

---

- HS2 Ltd began a programme of construction open evenings at HS2 in Euston in July 2016.
- These will be held monthly (usually on a Thursday) from 18:00 – 20:00.
- Open invitation to the community to come along to hear about programme developments from the construction team.
- Also gives the community an opportunity to ask technical experts questions about areas of concern.
- Open evenings have been scheduled up to November 2016 and advertised in the quarterly newsletter, leaflet drops, and local media.

# Construction Surgeries

---

- HS2 Ltd began holding 30 minute construction surgeries for members of the community at HS2 in Euston in August 2016.
- They are an opportunity for residents to speak one-to-one with experts from HS2 Ltd about the impact of the scheme on their home, business or route to work.
- Surgeries are held once a month (usually on a Thursday) and 30 minute appointments are available between 14:00 and 20:00.
- HS2 Ltd will keep the number of appointments available each month under review and increase if an increase in demand is experienced.

# Land and Property Surgeries

---

- HS2 Ltd began holding 30 minute land and property surgeries for members of the community at HS2 in Euston in August 2016.
- Land and property surgeries are an opportunity for community members to meet with HS2 Ltd employees, and agents, to discuss compensation and discretionary schemes.
- Surgeries are held once a month (usually on a Thursday) and 30 minute appointments are available between 14:00 and 20:00.
- HS2 Ltd will keep the number of appointments available each month under review and increase if an increase in demand is experienced.



# HS2 in Euston Newsletter


- Quarterly newsletter circulated to local residents.
- First newsletter sent to 21,000 properties in May 2016.
- Used to keep the community updated and aware of upcoming construction works.
- Includes information of upcoming community engagement events and information events.

HS2 IN EUSTON  
Quarterly newsletter

hs2 engine for growth

Welcome to High Speed Two's  
**SUMMER NEWSLETTER**

We want to keep you up to date with what's happening over the next few months, as we prepare to build a new railway and redevelop Euston station.



**What is High Speed Two and what does it mean for me?**

In case you don't know about HS2, this newsletter explains who we are, when you might see us working in your area, and what we're doing. We also want to know what you'd like to hear about, so please get in touch – our details are on the back.

HS2 is a new railway that will link the big cities of the North and the Midlands to London with less-crowded, faster and more reliable travel. HS2 will also create space on the existing railway, so it runs more smoothly too.

Euston station is the London terminus for HS2, but will remain open while the new railway is built. And when completely finished, it will be easier to use, with better connections to the Underground and many new shops and facilities.

[www.gov.uk/hs2](http://www.gov.uk/hs2)

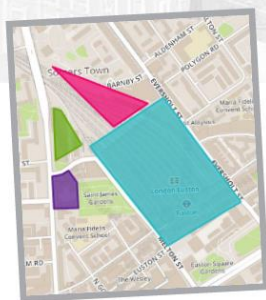
# HS2 in Euston Website

## HS2 in Euston

Euston station will be developed to become the London terminus of HS2. Read our proposals for making construction in the area less disruptive and, more importantly, let us know what you think of our plans.

[Comment on Construction Proposals](#)

[Learn more](#)



### What is HS2?

High Speed 2 is a new high speed railway line connecting London with the major cities of the UK. Euston has been chosen as the station where HS2 trains begin and terminate their journeys. To support this, Euston Station will be modernised, including the addition of 11 new platforms, with up to 18 trains an hour travelling north to locations such as Birmingham, Leeds, Manchester, and beyond to Scotland.

### Listening to feedback on construction proposals

Construction in Euston is planned to begin in 2017. We want to make sure we continuously engage with the people who live around the station, and make sure their views are taken into account when planning construction work, to minimise disruption as much as possible. Using this site you can find out more about what's going on in your area, add comments telling us how you feel about the works, and see what other people have written.

[Comment on Construction Proposals](#)

# HS2 in Euston Website

---

- Online engagement tool launched in August 2016.
- First dedicated online community engagement tool along the line of the HS2 route.
- Enables HS2 Ltd to post information about the forthcoming construction programme and hosts bespoke information on important local topics.
- Has the facility for the community to comment on what is currently happening in the local area and what is upcoming.
- Comments received are fed back into the project.
- Resource for HS2 related news relevant to the area around Euston station.
- Has been advertised on the London Borough of Camden's website.

# Topic Working Groups

---

- During August 2016, HS2 Ltd has been holding topic specific working groups with community (ECRG) representatives.
- The working groups allow for those representatives to meet with HS2 Ltd technical experts to discuss the topic area in detail and to be updated on current proposals. The meetings held in August primarily focused on the issues which petitioners intend to raise before Select Committee.
- There are five topic working groups:
  - Noise Insulation
  - Air Quality
  - Open Space and Trees
  - Transport (road)
  - Station design

# Further planned engagement initiatives

---

- Planned events and initiatives include:
  - Attendance at upcoming West Euston Partnership Community Festival on 17 September 2016.
  - Regular advance notices of HS2 related utility works to affected areas of the community.
  - Upcoming utilities community information event.
  - Production of a series of area specific factsheets.
  - Continued use of HS2 in Euston for topic specific information events, surgeries and open evenings.
  - Continued outreach to community groups in Camden area.

# Community Events hosted at HS2 in Euston

Event	Date
Land and Property Surgery	25/08/2016
ECRG Working Group - Station Design	23/08/2016
Construction Open Evening	18/08/2016
ECRG Meeting	17/08/2016
ECRG Working Group - Air Quality	16/08/2016
ECRG Working Group - Noise Insulation	16/08/2016
Construction surgery	11/08/2016
ECRG Working Group - Transport (road)	09/08/2016
ECRG Working Group - Open Spaces and Trees	08/08/2016
ECRG Meeting	14/07/2016

# Community Events hosted at HS2 in Euston

Event	Date
Meeting between Chief Executive (Simon Kirby) and ECRG Members	29/06/2016
Noise Insulation Information Event	21/05/2016
Noise Insulation Information Event	19/05/2016
National Temperance Hospital Demolition Information Event	14/05/2016
Air Quality & Materials By Rail Information Event	13/05/2016
National Temperance Hospital Demolition Information Event	12/05/2016
Air Quality & Materials By Rail Information Event	11/05/2016
ECRG Meeting	27/04/2016
HS2 in Euston Launch	24/02/2016

# Euston Community Engagement

---

Euston Community Representatives Group



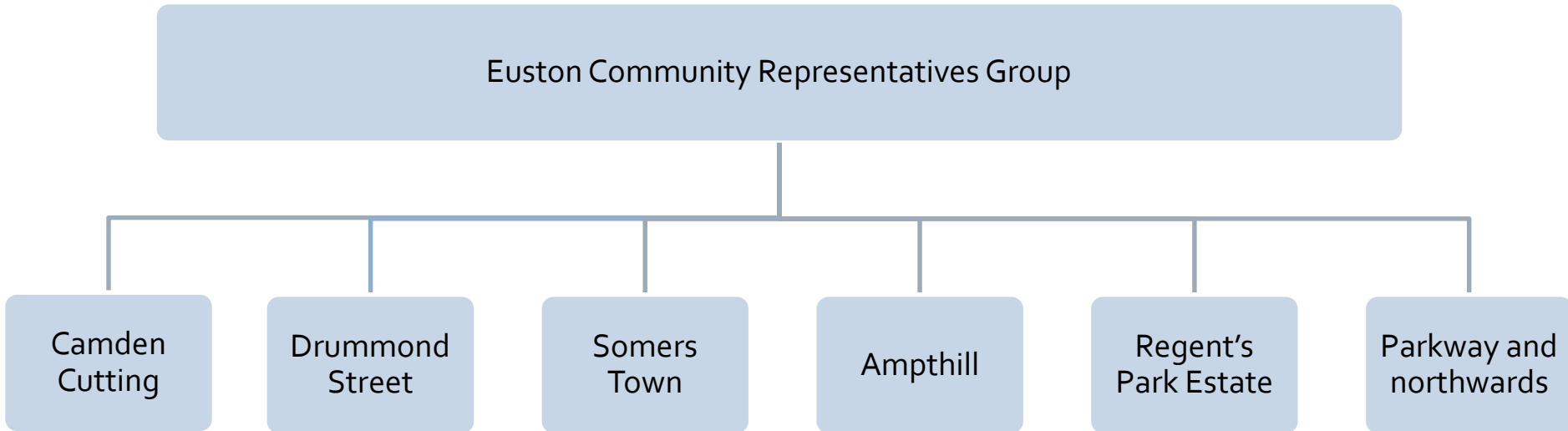
# Development of ECRG

---

- Prior to the deposit of AP3, active consideration was given as to how best to engage with the community regarding the proposals.
- This included discussions with some members of the community (specifically with members of representative groups).
- Their proposals included a suggestion that HS2 Ltd should engage with representatives of different areas within Euston (“community area sub-groups”).
- This led to the establishment of the Euston Community Representatives Group (ECRG) which meets with HS2 Ltd and other stakeholders to discuss the plans for the Euston area.

# ECRG Community Area Sub-groups

---



# ECRG Meetings

---

- ECRG meetings are attended by representatives from the six community areas and representatives from HS2 Ltd.
- Other invitees include officers from LB Camden, Network Rail, TfL and local elected representatives.
- Meetings are also open for the public to attend.
- Since July 2016, meetings have been chaired by an independent chair, Rosemary Jackson QC, who was proposed for the role by the community representatives.

# ECRG Meetings

---

Date	Meeting
18/10/2016	Euston Community Representatives Meeting No.9 (Proposed)
17/08/2016	Euston Community Representatives Meeting No.8
14/07/2016	Euston Community Representatives Meeting No.7
27/04/2016	Euston Community Representatives Meeting No.6
15/09/2015	Euston Community Representatives Meeting No.5
17/08/2015	Euston Community Representatives Meeting No.4
20/07/2015	Euston Community Representatives Meeting No.3
15/06/2015	Euston Community Representatives Meeting No.2
18/05/2015	Euston Community Representatives Meeting No.1

In addition: Community representatives on the ECRG met with Simon Kirby, CEO of HS2 Ltd, and other HS2 Ltd representatives on 29/06/2016.

# Euston Community Engagement

---

Community Engagement Framework

# Community Engagement Framework

---

- The Promoter has been in discussion with the London Borough of Camden over the drafting of the Community Engagement Framework in accordance with the assurance given to the Council during the House of Commons Select Committee proceedings:

*'The Secretary of State will require the Nominated Undertaker to engage with the London Borough of Camden on the development of a community engagement framework aimed at ensuring all sections of the community, including businesses and individuals, are made aware of developments in relation to the construction programme and local impacts.'*

# Community Engagement Framework

---

- In line with the assurance, HS2 Ltd has been liaising with LB Camden throughout 2016 in respect of the draft Community Engagement Framework for Euston.
- The draft framework included:
  - A programme of consultation and engagement in Euston;
  - A 3 year Community Engagement Plan;
  - Engagement initiatives regarding station and vent shaft design and construction;
  - Engagement regarding traffic related topics;
  - Engagement with local schools; and
  - Commitment to equality, diversity and inclusion in all engagement.

# Community Engagement Framework

---

- The draft Community Engagement Framework for Euston was presented to the ECRG on 27 April 2016.
- The community representatives who were present at the meeting rejected the proposals contained in the draft framework.
- HS2 Ltd invited the ECRG to provide proposals for a future draft of the framework.
- Hs2 Ltd has agreed to fund an independent facilitator to assist ECRG in formulating its proposals for the framework. ECRG has requested that this process begins after the House of Lords Select Committee proceedings conclude.
- In parallel, HS2 Ltd will continue to revise the draft framework for further discussions with the ECRG as part of that process.



# Euston Community Engagement

---

Background

# HS2 Approach to Consultation and Engagement

---

- Public consultation on initial scheme Feb – July 2011.
- Draft EIA Scope and Methodology Report for the ES consultation Spring 2012.
- Engagement through Community Forums during preparation of the ES.
- Draft ES consultation May – July 2013.
- ES consultation Nov 2013 – Feb 2014.
- SES2 and AP3 ES consultation Sep – Nov 2015.
- EQIA update CFA 1 Euston station and approach consultation Sep – Oct 2015.

# Community Forums

---

- Early engagement with local communities primarily through Community Forums.
- Community Forums were set up in March 2012 to:
  - inform residents about the Proposed Scheme and how it might affect them at a local level;
  - consider local issues and discuss possible ways to mitigate potential impacts;
  - identify possible benefits to the community; and
  - for engagement with the community on the draft Environmental Statement.

# Community Forums

---

- Euston Community Forum meetings were attended by HS2 Ltd, elected and non-elected representatives from the London Borough of Camden, the local MP, action groups, local residents' groups and businesses, individuals, and other interested stakeholders.
- Some of the key issues to arise from those meetings included:
  - design of the station and oversite development;
  - potential environmental effects of construction;
  - need for wider engagement with the community;
  - need for replacement social housing;
  - potential effects on Maria Fidelis Convent School;
  - impact on Drummond Street traders; and
  - open space.

# Community Forums

Event	Date
Community Forum	16/12/2013
Community Forum	26/11/2013
Community Forum	29/10/2013
Community Forum	05/09/2013
Community workshop	03/07/2013
Community Forum	11/06/2013
Community Forum	18/04/2013
Community Forum	24/01/2013
Community Forum	22/11/2012
Community Forum	12/06/2012
Community Forum	13/03/2012

# Community Engagement 2014/15

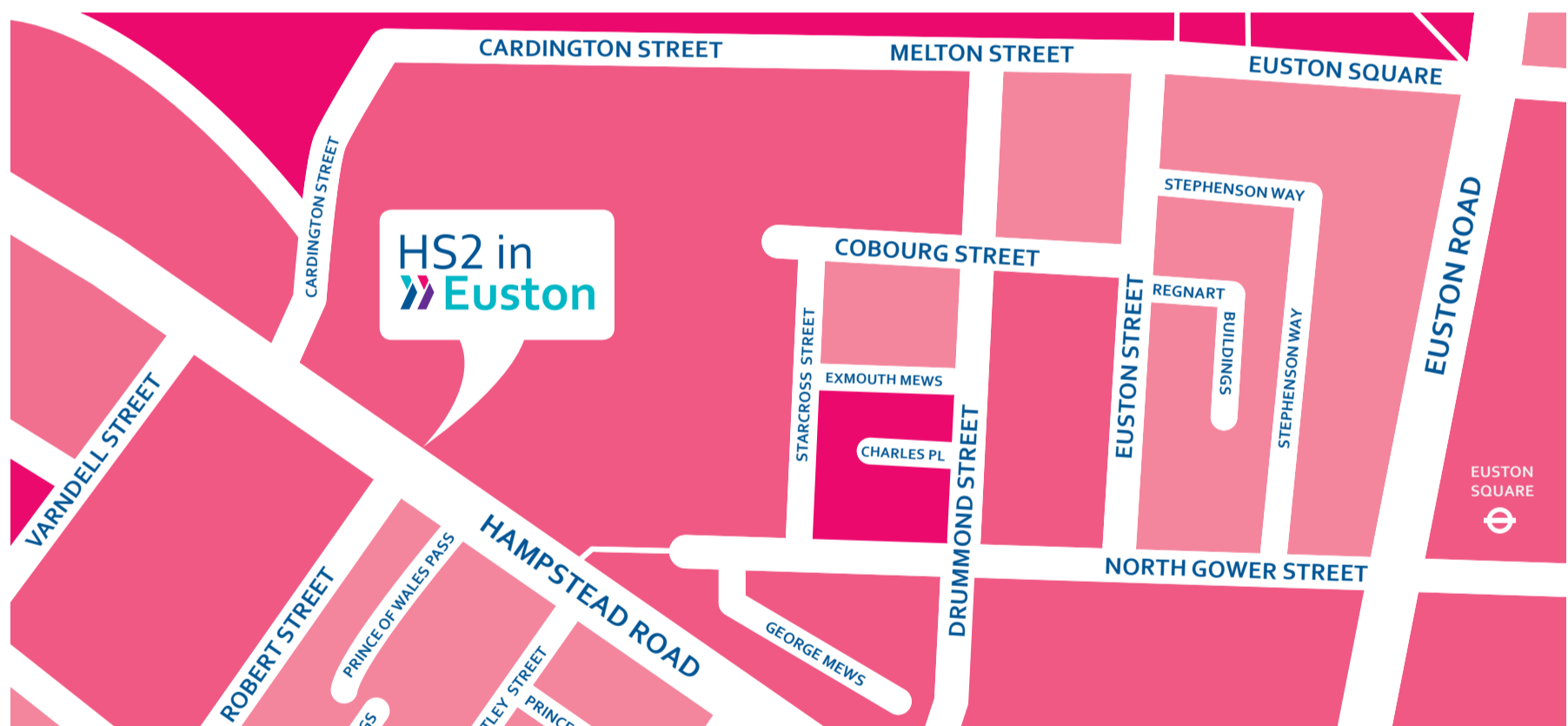
---

- During 2014 and 2015, engagement with the community included:
  - Attendance at a number of LB Camden-led working groups on options for Euston station;
  - Meetings with community representatives from the Camden Cutting area to discuss their proposals for an alternative alignment in the throat;
  - Bilateral meetings with House of Commons petitioners; and
  - “Door knocking” programme on the Ampthill Square Estate and Regent’s Park Estate.

# HS2 in Euston

HS2 in Euston is a place everyone can visit to find out more about our plans for the station and the work we'll be carrying out in the area.

HS2 in Euston is a first for HS2. You can see maps and models of the station and area, find out more about upcoming events or updates, and give us your feedback.



**HS2 in Euston:** Collective, Temperance Hospital,  
110 Hampstead Road, London NW1 2LS

**Opening hours (excluding bank holidays):**  
Tuesday, Wednesday and Friday from 10am to 4pm  
Thursday from 2pm to 8pm  
First Saturday of each month from 10am to 2pm

**Helpline:** 020 7944 4908 **Email:** [HS2enquiries@hs2.org.uk](mailto:HS2enquiries@hs2.org.uk)

# Welcome to ...

# HS2 in



# Euston

We are pleased to invite you to the opening of  
HS2 in Euston on Wednesday, 24 February 2016

Drop in and see us between 5.30pm and 7.30pm

**HS2 in Euston** is where everyone can visit to find out more about our plans for the station and the work we will be carrying out in the area.

**HS2 in Euston** is based in the former National Temperance Hospital on Hampstead Road.

**HS2 in Euston** is a first for HS2. It is a key part of our engagement and will be supported by a community relations team. Find out more about our plans for information updates and events to involve you in our station plans and work in your area.

We'd be delighted for you to join us and see **HS2 in Euston** for yourself.

**Opening hours:**

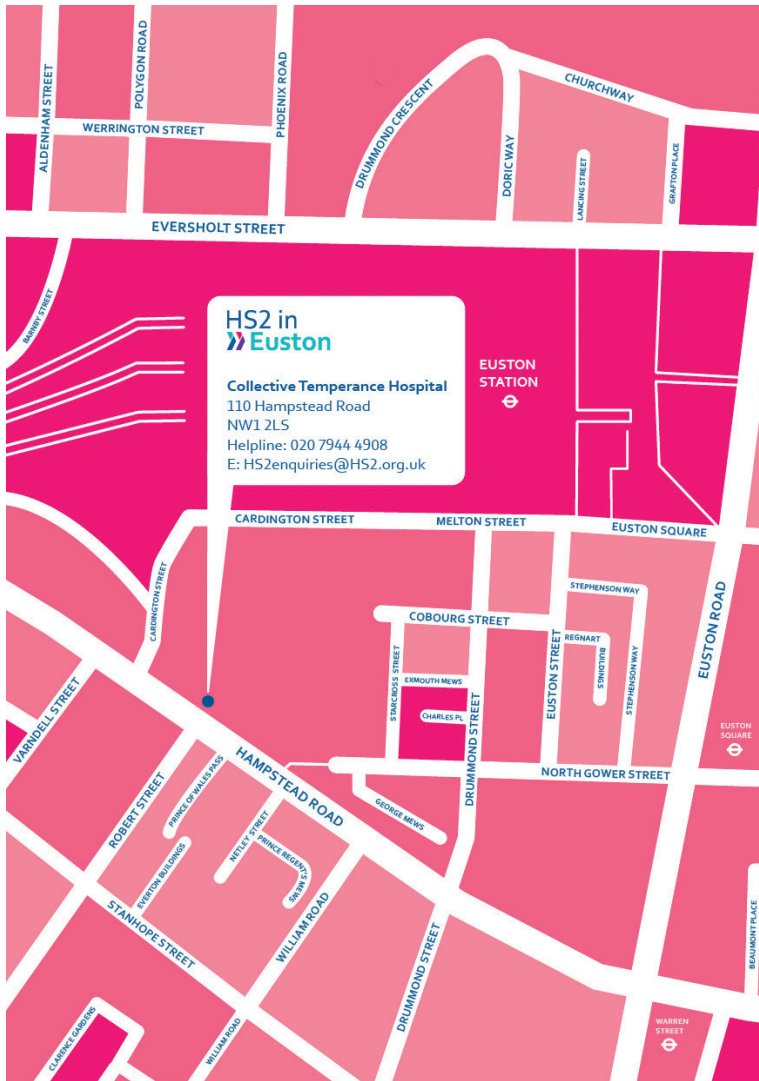
Tuesday-Friday, late night Thursday and first Saturday of the month.

**HS2 in Euston:**

Collective Temperance Hospital, 110 Hampstead Road, London NW1 2LS



# HS2 in Euston





The place to  
find out more...

# HS2 in Euston

**HS2 in Euston** is where everyone can visit to find out more about our plans for the station and the work we'll be carrying out in the area.

**Opening times:**

Tuesday, Wednesday and Friday 10am-4pm

Thursday 2pm-8pm

First Saturday of each month 10am-2pm

*(subject to review, 1 June 2016)*

**Helpline:** 02079444908 • [HS2enquiries@HS2.org.uk](mailto:HS2enquiries@HS2.org.uk)



# Camden noise insulation - FAQs

These FAQs, the accompanying letter and the noise insulation leaflet should be read with HS2 Information Paper E23: Control of Construction Noise and Vibration, which explains HS2 Ltd's standard noise mitigation package and which can be found on the HS2 website. Go to [www.gov.uk](http://www.gov.uk) and search for "HS2 information paper". If you don't have access to the internet, we can send you a copy of the paper: call our Helpdesk on 020 7944 4908 or email [HS2enquiries@hs2.org.uk](mailto:HS2enquiries@hs2.org.uk). Or you can pick up a copy at "HS2 in Euston", 110 Hampstead Road NW1 2LS.

## **Q1 My home is not identified as part of the noise insulation scheme, but I think it should be. What can I do?**

A1 If you think we've missed you out, please get in touch with us using the contact details above.

If you have a particular medical condition that will be affected by the HS2 construction noise, there is provision for you to be considered as a special case. Please contact HS2.

## **Q2 What is a trigger level?**

A2 A trigger level is used to tell us when action needs to be taken. In the case of noise insulation, the triggers relate to noise levels and the durations above which we may offer noise insulation for residents.

## **Q3 What criteria are used to qualify for noise insulation consideration?**

A3 The 'trigger levels' reflect best practice and national policy. For further information, please read Appendix B of Information Paper E23: Control of Construction Noise and Vibration.

## **Q4 Will I definitely get noise insulation if I have been sent a letter?**

A4 The letter you have received indicates that you may qualify for noise insulation in line with the standard mitigation offer, subject to confirmation of the arrangement of your property (eg, if the windows of your living room, bedroom(s), kitchen-diner or dining room are on the affected side of the building).

A subsequent visit will be arranged to confirm these details.

## **Q5 What else is HS2 doing for residential mitigation at Euston?**

A5 The London Borough of Camden (LBC) has raised concerns that some buildings around Euston are susceptible to mould, damp and excess heat - conditions which may be made worse by installing secondary glazing, or keeping windows closed over a long period. Therefore, in line with the assurances provided to LBC, HS2 Ltd is commissioning an independent survey of properties (whether or not they qualify for noise insulation) which will be carried out over Summer 2016. The results will tell HS2 Ltd whether additional measures are required to protect residents. HS2 Ltd and the London Borough of Camden will provide further information in Summer 2016.

## **Q6 What kind of work or improvements can you offer?**

A6 We will provide secondary glazing or thermal double glazing for living room and bedroom windows on eligible facades. Windows work best to control noise when closed,

so alternative ventilation - for example, a small electrical ventilator fan located in an outside wall - is usually required to enable windows to be kept closed when noise levels are highest. We will also install blinds on windows on eligible facades where there is a need to control solar glare gain, and provide insulation treatment for external doors on eligible facades.

## **Q7 What is the process for deciding what mitigation I will receive?**

A7 Once you have returned the form enclosed with the letter, HS2 will arrange to visit you in order to discuss the application with you generally; view your home and take any necessary measurements; and identify any special issues or requirements (such as any other approvals that may be required in the case of noise insulation). It is likely that this will take place in Autumn 2016.

This visit will confirm your eligibility and an offer-letter will be provided to you, setting out the details of the noise insulation package or grant which is to be offered.

Any additional requirements arising from the independent surveys commissioned by HS2 will be reflected in the offer made to you.

## **Q8 I've received a letter about the noise insulation scheme but my neighbour hasn't. Why?**

A8 HS2 Ltd has identified and written to properties that are likely to be eligible for the scheme. If someone did not receive a letter, but feels they should be considered for the noise insulation scheme, we are happy to discuss it with them.

## **Q9 I'm a tenant of the London Borough of Camden. Can I receive noise insulation?**

A9 HS2 Ltd is working with the London Borough of Camden and will install the noise insulation package in all tenanted council properties that qualify for the scheme. Please read the enclosed information and complete the form overleaf to provide us with your contact details.

## **Q10 I'm a leaseholder of a property with the London Borough of Camden. Can I receive noise insulation?**

A10 It is up to you whether you want the package, but HS2 and the London Borough of Camden encourage you to take up the scheme to protect you from adverse noise impacts.

## **Q11 Is secondary glazing the same as double glazing?**

A11 No. Secondary glazing is a separate pane of glass, installed 10cm to 20cm inside the existing window. Your existing window remains in place. Double glazing consists of two panes of glass in the same casing, typically around 2cm apart, which replace the existing window.

## **Q12 When do I have to decide? Can I change my mind?**

A12 If you are eligible, you will be able to accept the offer of noise insulation up to six months after the offer has been made in writing to you, or up to one month before the intended installation of other noise insulation at eligible properties affected by the same HS2 construction works. If you do not respond within the timeframe due to circumstances

beyond your control, we will consider how we can help; however, our programme of construction works will continue as planned.

If you choose not to accept the offer, but change your mind later, we may still be able to help – as long as it's within six months after the date is made in writing to you or one month before intended installation of other noise insulation, whichever is sooner.

**Q13 What if I already have secondary glazing or thermal double glazing installed privately (i.e. not as a result of a grant from another public works)?**

A13 If you have had a noise insulation package (i.e. secondary glazing or thermal double glazing, plus ventilation units and blinds) installed privately since the property was constructed and within four years of the noise insulation offer date, it will be inspected to check whether it is adequate to reduce the construction noise as much as it should.

If the noise insulation package meets the specification, the person who incurred the cost of the works can receive a grant in respect of the work already done equivalent to the HS2 scheme.

**Q14 What if I already have secondary glazing installed as the result of a grant from another public works scheme?**

A14 If your home has already had insulation work carried out, or a grant for such work because of another public works scheme (such as a road or earlier railway works), you will not be eligible for further work or a grant from HS2 Ltd. However, the existing noise insulation will be inspected to ensure that it is adequate to reduce the construction noise as much as it should. If it is not, the works will be carried out or a grant made to have them carried out to bring the installed noise insulation package up to the appropriate standard.

**Q15 What if I already have double glazing?**

A15 The noise assessments are based on the expected noise immediately outside the building, so the type of glazing you currently have installed would not affect your eligibility under the scheme. You are not obliged to accept the offer of insulation if you do not think you need it. HS2 will provide advice as to the effectiveness of any installed double glazing, in terms of reduction of external noise compared to the offer of secondary glazing. You may, at your own discretion, choose only to have ventilation units and blinds installed.

**Q16 Can I just have thermal double glazing installed instead of secondary glazing?**

A16 Yes. However, you will be made aware of the potential shortfall in sound insulation performance of the thermal double glazing compared to the secondary glazing, and be offered a grant to carry out the works yourself.

You will only receive a grant that is equivalent of the HS2 noise mitigation package.

**Q17 Can I take the grant and not do the works?**

A17 No. If a grant is offered and you accept it, you must have the works carried out to the specification in the offer. Otherwise you must repay the grant. You are not obliged to accept the offer if you do not think you need it.

**Q18 What if my landlord/tenant does not want the work carried out, but I do?**

A18 HS2 will try to reach agreement between all parties where possible. In any event, the party wishing to have the work carried out is requested to do all that they reasonably can to reach agreement with all other interested parties that can influence whether or not the work can be carried out.

**Q19 Will there be a maintenance grant for the noise insulation package?**

A19 Yes. All costs of the provision of noise insulation, maintenance and running costs of the ventilation systems at Euston will be made by HS2, which HS2 will calculate.

The details of this will be shared with residents as part of the noise insulation offer.

# Noise insulation

A guide to the HS2 noise insulation scheme





© Cultura Creative (RF) / Alamy Stock Photo

## Introduction

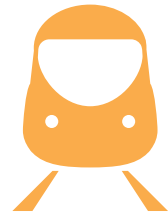
HS2 is a new railway that will support fast, frequent, reliable journeys to over 100 cities and towns, including eight of our largest cities.

We plan to build HS2 in phases. Phase One will connect London to Birmingham from 2026.

We also plan to build a route between the West Midlands and Crewe, to open in 2027.

We're extremely aware of the issues that building and operating a new railway presents to people who live nearby, and we take our responsibility to you very seriously.

We will design and construct HS2 in ways that reduce noise as much as we reasonably can. In certain circumstances, where noise from the construction of HS2 is still likely to impact you in your home, HS2 may offer to install noise insulation for you, or pay for the costs for you to install noise insulation yourself.



Phase One will connect London to Birmingham from 2026

## Am I eligible?

You can use our scheme if:

- you own or live in a residential dwelling or other building used for residential purposes; and
- the predicted or actual construction noise exceeds a certain 'trigger level'.

You can read about the trigger levels in information paper E23, or call and ask us about it.



Find out more about noise levels in our information paper and FAQs

## What is noise insulation?

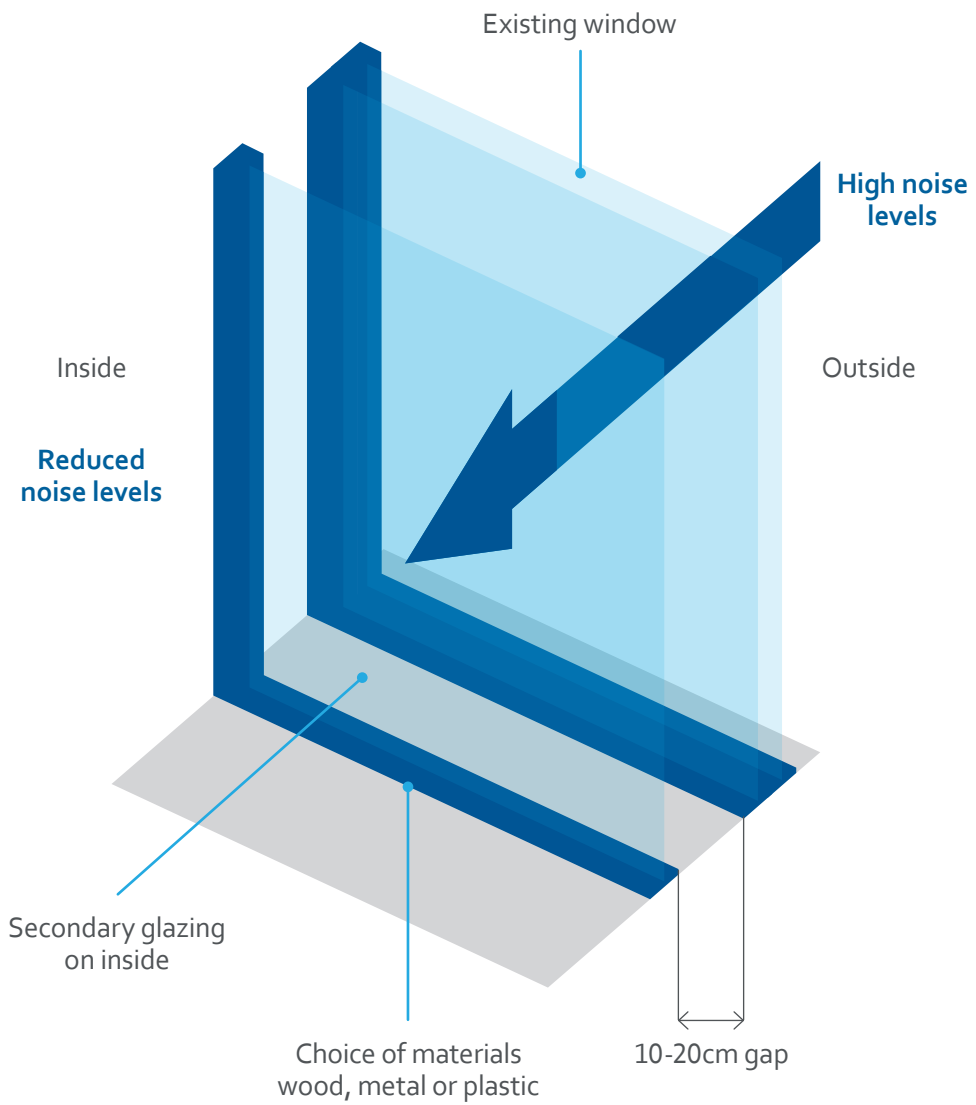
We can help reduce noise with:

- secondary glazing or thermal double glazing for living room and bedroom windows;
- extra ventilation, such as a small electric fan in an outside wall, so you can close windows to block out noise;
- blinds on façades; and
- insulation for external doors.

## Is secondary glazing the same as double glazing?

No. Double glazing has two panes of glass in the same frame, around 2cm (under 1 inch) apart. It replaces the existing window.

Secondary glazing is normally a separate pane of glass, in its own wooden, metal or plastic frame. It is fitted 10 to 20cm (4 to 8 inches) inside the existing window, which remains in place. Secondary glazing can be opened for cleaning or ventilation.



## What if I already have secondary glazing or double glazing?

Of course, if you do not think you need more noise insulation, you do not have to have it.

We can also give you advice on your existing glazing, and suggest whether more secondary glazing would be useful.

## How does it work?

Please complete the enclosed form if you would like to discuss your options and arrange to have a survey.

If after an initial survey you are confirmed as being eligible for the scheme, we will discuss the details of the offer with you. You can then decide if you want noise insulation.

You will need to provide adequate access for the survey and installation. If it will cost you money to provide access, please tell us: we may be able to pay you back, but we must agree this in advance.

If you decide to have noise insulation, we can arrange for it to be installed – we will use an experienced and responsible contractor to do the work. Or we can offer you a grant to get the work done. You can choose, but you do not need to decide yet.



The work will be done by an HS2 contractor, or we will offer you a grant

If we offer you a grant:

- you must first obtain three independent written estimates of the cost ('quotes');
- the work must comply with the relevant specifications;
- you must select the quote that offers the best price for complying with those specifications;
- you will receive the amount of your selected quote (or the actual cost of the work, if this is cheaper);
- you may receive 10% of the estimated cost in advance, and the rest when the work is satisfactorily completed;
- the work must be completed within 12 months of the advance payment, or before the HS2 construction works for which insulation is needed, whichever is earlier;
- you must get permission from any other relevant person or organisation. For example, if you are a tenant, you need your landlord's approval. You are also responsible for planning/building consents from your local authority.

The scheme covers work on the existing fabric and decoration, once windows, ventilation equipment and secondary doors have been fitted. However, you cannot use the scheme to pay for repairs to existing building defects.



Construction work  
is due to start in 2017

## **What if I do not accept the offer, but change my mind later?**

You will normally have six months to accept the offer. If we need you to decide sooner, we will tell you when the cut-off date is.

If you do not respond within the timeframe due to circumstances beyond your control, we will consider how we can help; however, our programme of construction works will continue as planned.

If you choose not to accept the offer, there is no option to change your mind later.

## **Can I take the grant and not do the works?**

No. If you accept, you must have the works carried out – as specified in the offer – in order to receive the grant.

## **What if my landlord or tenant does not want the work carried out, but I do?**

HS2 will try to help you reach an agreement. In return, we will ask you to do everything you reasonably can to reach agreement with all other interested parties.

If you have any questions or you would like to find out more information please contact us:



020 7944 4908



HS2enquiries@hs2.org.uk

Please contact us if you would like a free copy of this leaflet in:

- Large print
- Braille
- Audio

You can also contact us for help and information in a different language.

High Speed Two (HS2) Limited  
One Canada Square  
Canary Wharf  
London E14 5AB

CS490A © HS2 Ltd.

# HS2 Noise insulation application form

Please complete this form to register your interest in the mitigation scheme and to discuss your options.



## Your contact details

Name of applicant
Address requested to be considered for the noise and vibration mitigation scheme
Tel
Email

**Please return your completed form to:**

Freepost address

**For any enquiries please contact us:**

HS2enquiries@hs2.org.uk

Please tick here if you are happy for us to share your contact details with the London Borough of Camden

## Your interest in the property (delete as applicable)

Tenant / Leaseholder / Freeholder
-----------------------------------

## If you are not the landlord/freeholder, please supply their contact details

Address (if different to above)
Tel
Email

## I confirm that the information supplied is accurate

Print name
Signature
Date

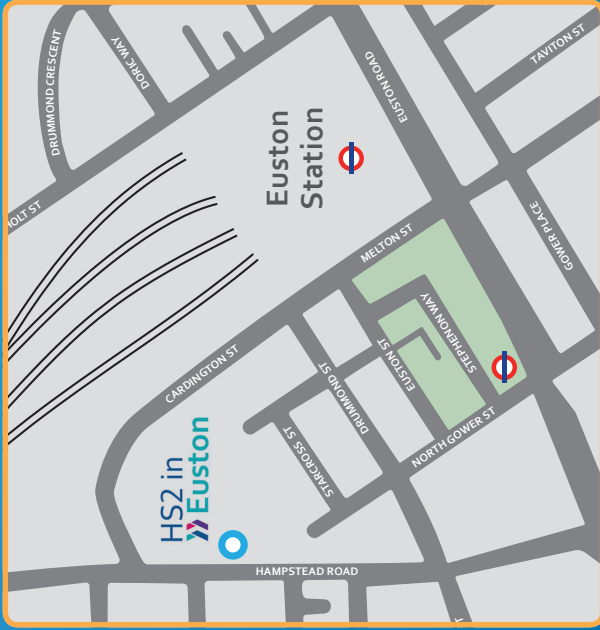


## We would like to invite you to an event about noise insulation.

High Speed Two (HS2) is the new high speed railway for Britain. These events are an opportunity for you to find out more about noise insulation, why we're offering it, and what is being offered.

- Talk to our experts about the noise insulation programme
- Take an opportunity to have any questions answered





**Find us at:**  
HS2 in Euston, Collective Temperance Hospital,  
110 Hampstead Road, London NW1 2LS

Please feel free to join us at any time on either  
**Thursday 19 May** between **4pm and 8pm** or  
**Saturday 21 May** between **11am and 3pm**

We look forward to meeting you. *The HS2 team*

*Return address: High Speed Two Limited, One Canada Square, London E14 5AB*

Email [HS2enquiries@hs2.org.uk](mailto:HS2enquiries@hs2.org.uk)  
Telephone 020 7944 4908  
[www.gov.uk/hs2](http://www.gov.uk/hs2)

## Sorry we missed you.

We called to discuss the noise insulation programme with you, but unfortunately we missed you.

If you haven't already done so, please complete and send back the application form.

If you have any questions please feel free to drop in to one of our information events at HS2 in Euston, details overleaf.



**P2287 (2)**

**Find us at:**

HS2 in Euston, Collective Temperance Hospital,  
110 Hampstead Road, London NW1 2LS

Please feel free to join us at any time on either  
**Thursday 19 May** between **4pm and 8pm** or  
**Saturday 21 May** between **11am and 3pm**

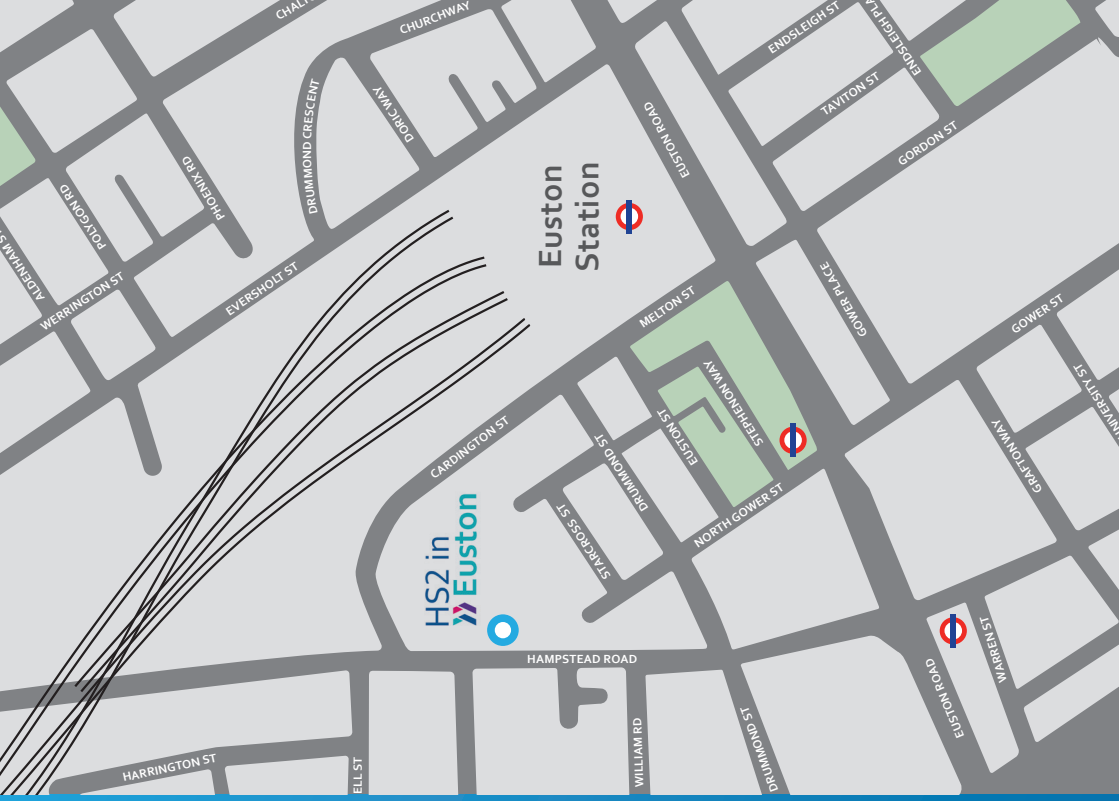
We look forward to meeting you. *The HS2 team*



For any questions please contact us at:

**Email** [HS2enquiries@hs2.org.uk](mailto:HS2enquiries@hs2.org.uk)  
**Telephone** 020 7944 4908  
**www.gov.uk/hs2**

HOL/10018/0060



# HS2 in Euston

## INFORMATION EVENTS – MAY 2016

High Speed Two (HS2) is the new high speed railway for Britain linking London to eight of our largest cities, including Birmingham, Leeds and Manchester.

We are holding information events so you can find out more and ask questions about the project and what it means for the local area.

### **Air quality and moving materials by rail**

Find out how we plan to:

- reduce and monitor the effects of our construction work on the environment.
- bring in and take out construction material by rail, not road.

### **Demolition of NTH**

The old National Temperance Hospital (NTH) building will need to be demolished to make way for construction. Part of it is due to come down later this year. Find out how we're planning to do it.

### WHEN ARE THESE EVENTS HAPPENING?

#### **Air quality and materials by rail events**

Weds 11 May, 4pm-8pm

Fri 13 May, 10am-2pm

#### **NTH demolition events**

Thurs 12 May, 4pm-8pm

Sat 14 May, 10am-2pm

All events take place at  
HS2 in Euston, our new  
centre in Hampstead Road  
(see map on back)

If you have any questions or you would like to find out more information please contact us:

 020 7944 4908    @ HS2enquiries@hs2.org.uk

Please contact us if you would like a free copy of this leaflet in:

- Large print
- Braille
- Audio

You can also contact us for help and information in a different language.

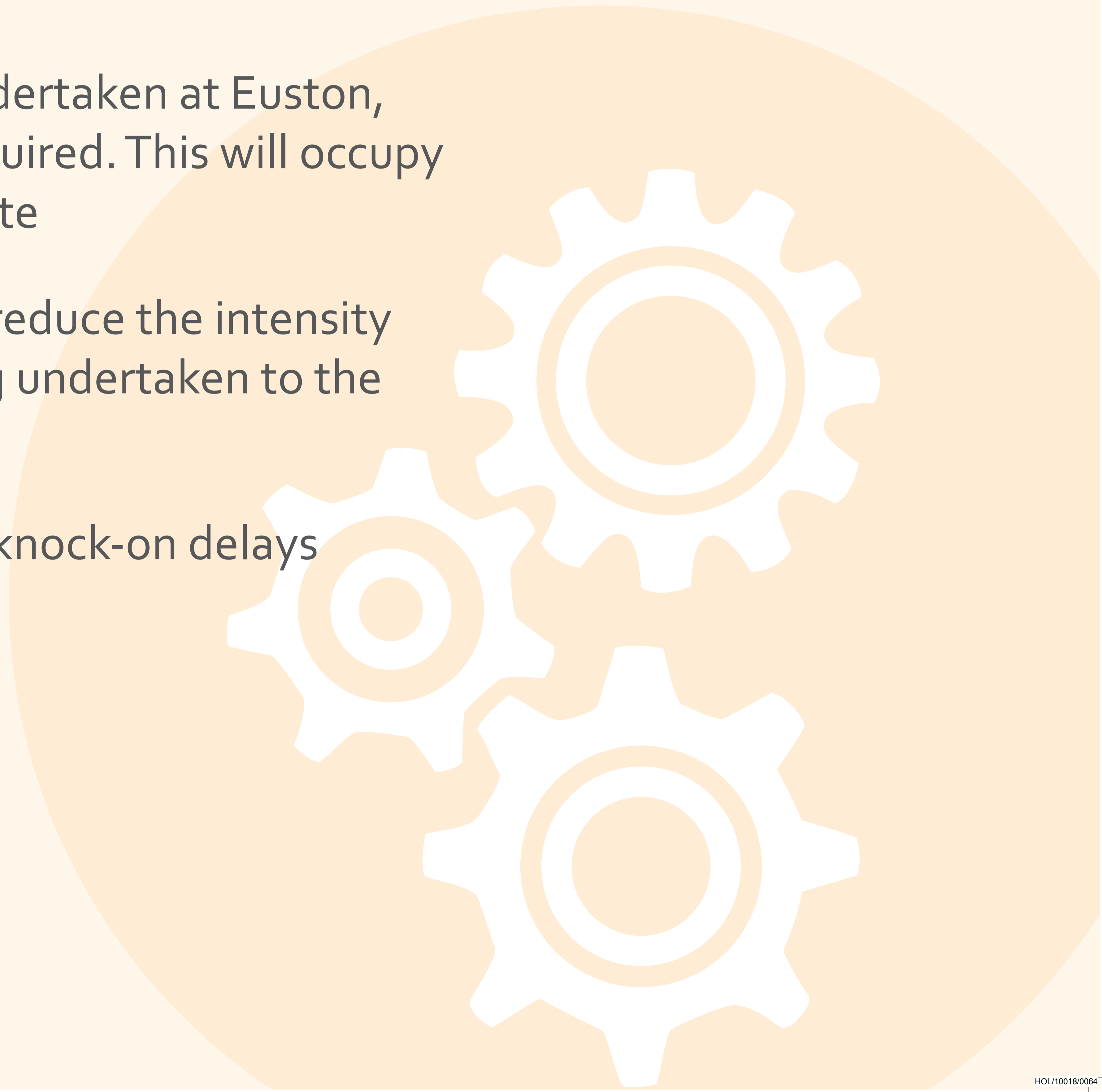


## WHAT ARE WE DOING?

- HS2 Ltd is demolishing the former National Temperance Hospital to make way for the construction of the new HS2 station at Euston
- The building will be demolished in phases. It is planned that this work could commence in autumn 2016
- To allow HS2 Ltd to undertake the work, the methodology will be approved by the London Borough of Camden
- The methodology and construction management plan will be submitted to the London Borough of Camden in June 2016

## WHY ARE WE DOING THIS?

- To allow construction work to be undertaken at Euston, a construction compound will be required. This will occupy the National Temperance Hospital site
- Demolishing the NTH site early will reduce the intensity of concurrent demolition work being undertaken to the west of Euston station
- Early demolition reduces the risk of knock-on delays to other works at Euston





# WHEN WILL THE WORK TAKE PLACE?

## Current Indicative Programme

June 2016 – October 2016	October 2016 – March 2017	April 2017 – November 2017	July 2017 – March 2018
<p>Site secured and hoarded</p> <p>Asbestos removal and removal of internal walls and windows from Vezey Wing</p>	<p>Demolition of Vezey Wing in phases to leave a cleared hoarded site</p>	<p>Construction of HS2 site cabins</p>	<p>Demolition of Insull Wing to leave a cleared site</p> <p>Site to be used as a construction compound</p>

## WHO IS DOING THE WORK?

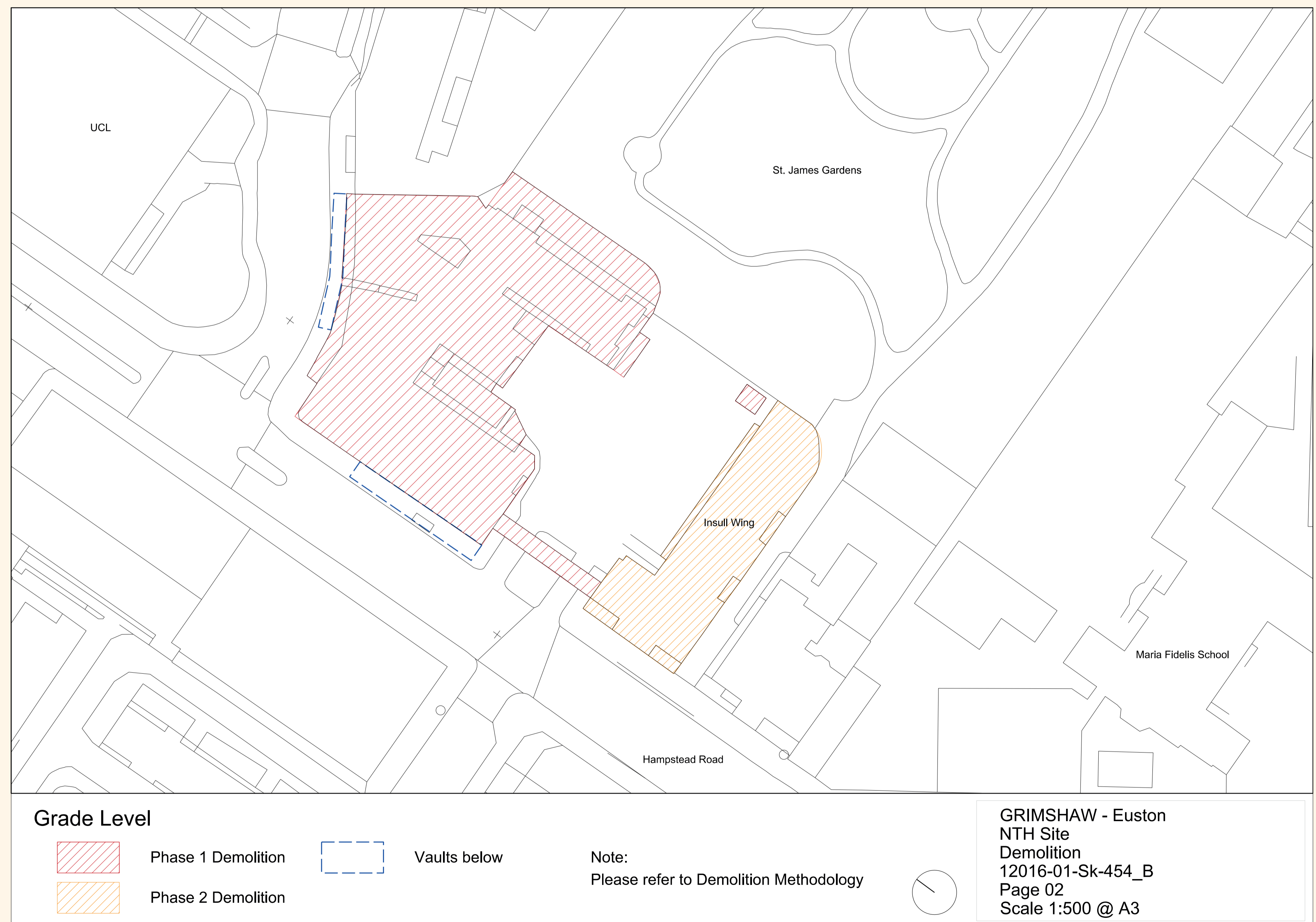
- The work is being planned and managed by HS2 Ltd, but the demolition will be undertaken by specialist contractors
- All contractors will be bound by the approved methodology and construction management plan
- Contractors will liaise with the community and stakeholders throughout
- The 'Considerate Constructors Scheme' will be followed by contractors



# WHERE ARE WE DOING THE WORK?

The work is being undertaken within the boundary of the National Temperance Hospital

Access will be from Hampstead Road; vehicles should access the site from the north and exit the site to the south



## HOW WILL THE SITE BE MANAGED?

- A construction management plan will be submitted to London Borough of Camden for approval
- The plan will include details of how the site will be managed and what measures are planned to manage effects during demolition
- The contractors will be bound by the approved demolition methodology and relevant HS2 undertakings and assurances

# THE VEZEY WING



# HS2 in Euston

## Community open evenings and surgeries

### What is happening?

In readiness for the construction of the HS2 Station at Euston, HS2 is planning a series of open evenings and surgeries to ensure the local community have an opportunity to learn more about what work is planned and how it may affect them.

The **open evenings** will be held at HS2 in Euston, our information centre in Hampstead Road and will begin with a presentation by HS2's construction team and there will be an opportunity to ask questions of the technical experts present during the open session.

The open evenings will be held monthly – see dates in the column on the right. There's no need to book, just come along.

And, if you would like to speak to someone about how the scheme affects you, your home, your business or your route to work for example, you can speak to someone on a one-to-one basis by booking onto a **surgery** session.

There are two types of surgeries: construction (for queries about how the planned works could affect you) and land and property (for enquiries about HS2's discretionary property schemes and the Compensation

### Construction open evenings

Usually Thursdays\* 6-8pm

- 26 July (Tuesday)
- 18 August
- 22 September
- 20 October
- 17 November

### Construction surgery

Usually Thursdays 2-8pm

- 11 August
- 8 September
- 13 October
- 10 November

See over for Land & Property surgery times

#### HS2 in Euston

Collective Temperance Hospital, 110 Hampstead Road, London NW1 2LS  
Tel: 020 7944 4908 • Email: [HS2enquiries@HS2.org.uk](mailto:HS2enquiries@HS2.org.uk)

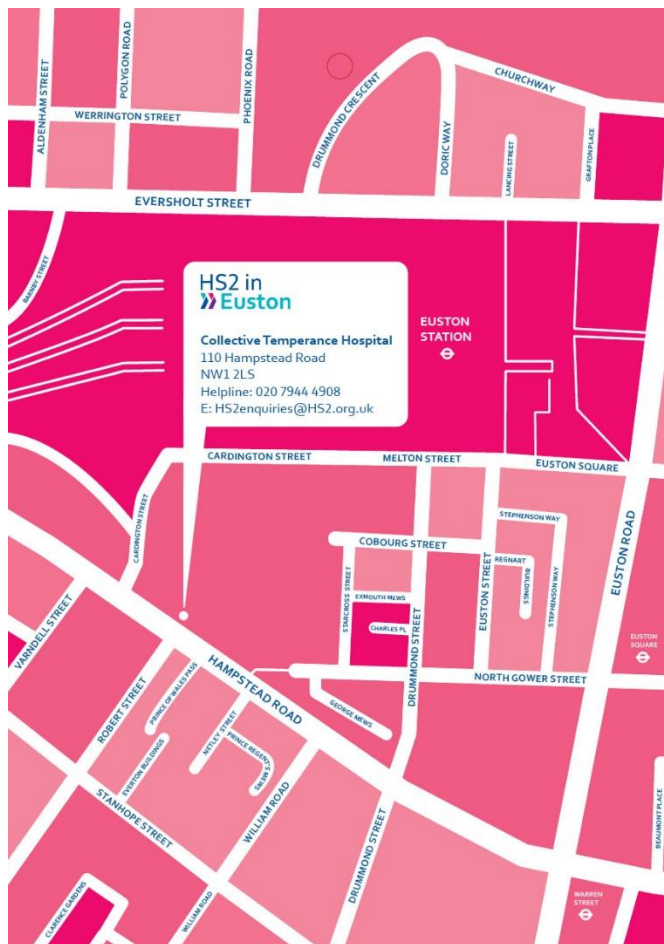
Code). 30-minute slots are available between 2pm and 8pm on selected Thursdays (see column to the right).

## How do I book a surgery time?

You can call our helpdesk, you can email us or you can come and see us at HS2 in Euston.

All the details of how to do this are in the column on the right.

Please note that we will need advance notification of your queries, so that we can ensure we have the right information for you when you visit. Where possible, bookings should be made at least two weeks in advance.



**HS2 in Euston**

Collective Temperance Hospital  
110 Hampstead Road  
NW1 2LS  
Helpline: 020 7944 4908  
E: [HS2enquiries@hs2.org.uk](mailto:HS2enquiries@hs2.org.uk)

## Land & property surgery

Usually Thursdays 2-8pm

- 25 August
- 29 September
- 27 October
- 24 November

## How can I find out more?

- Call our 24 hour, 7 day a week helpdesk on 0207 944 4908
- Email [HS2inEuston@hs2.org.uk](mailto:HS2inEuston@hs2.org.uk)
- Call into HS2 in Euston, our information centre.

## HS2 in Euston opening times

Tuesdays, Wednesdays and Fridays 10am-4pm

Thursdays 2pm-8pm

First Saturday of the month: 10am-2pm

Closed Mondays and bank holidays.

**HS2 in Euston**

Welcome to High Speed Two's

# SUMMER NEWSLETTER

We want to keep you up to date with what's happening over the next few months, as we prepare to build a new railway and redevelop Euston station.



## What is High Speed Two and what does it mean for me?

In case you don't know about HS2, this newsletter explains who we are, when you might see us working in your area, and what we're doing. We also want to know what you'd like to hear about, so please get in touch – our details are on the back.

HS2 is a new railway that will link the big cities of the North and the Midlands to London with less crowded, faster, and more reliable travel. HS2 will also create space on the existing railway, so it runs more smoothly too.

Euston station is the London terminus for HS2, but will remain open while the new railway is built. And when completely finished, it will be easier to use, with better connections to the Underground and many new shops and facilities.



## Working in your neighbourhood

If Parliament approves the plans for HS2, construction work will begin next year. In the meantime, we'll measure air quality, survey the ground, and check the utilities (like water and electricity) beneath the streets.

You may not have noticed the work we've done so far. But in the next couple of years, you are likely to see changes in and around Euston – even if it's just on your route to school or work, or in your neighbourhood.

## Changes on Hampstead Road this summer

Part of the old National Temperance Hospital building on Hampstead Road is due to be demolished this summer, to make way for a site to help us construct the railway. We held information events on the demolition in May, but if you missed them, please contact us for more information.

### Air quality

We want to monitor air quality at 39 locations across Camden. Monitoring equipment will be installed this summer to collect monthly readings before construction starts. The results will be shared with London Borough of Camden and the community.

We held information events about our air quality plans and the environmental measures we'll be putting in place.

This includes how we're working with Transport for London, Greater London Authority, Network Rail and Camden to see how we can reduce the traffic impacts in the area.

If you missed the events earlier in May, and have any questions about how we're monitoring air quality, please get in touch

## Doing the groundwork



Ground investigations are a key part of our preparations. Working with utilities companies, we check services such as water mains and power cables. If we need to do GI work near you, we'll tell you in advance, especially if roads need closing or it might be noisy. Our contractors will work as quickly and quietly as they can. And our helpline is available 24/7 if there's a problem - [020 7944 0550](tel:02079440550).

## Noise insulation

We've written to people in the Euston area that we believe may be eligible for help to insulate their homes against noise. We'll be working with residents to ensure that their properties are surveyed and they are familiar with the options available to them, such as secondary glazing. We're hoping to start installing noise insulation as early as September 2016.

A map of properties that are eligible is on our website ([www.gov.uk/hs2](http://www.gov.uk/hs2)). You can also see them at HS2 in Euston. Property owners have until 27 May to register with us.

If you think your property has been missed off the map, or there are special reasons you should be considered, please let us know at [hs2enquiries@hs2.org.uk](mailto:hs2enquiries@hs2.org.uk).





We've opened an information and resource centre in the middle of the Euston area where we can provide face-to-face contact for people wanting to know more about HS2 and how it will affect the Euston area.

We are open

- Tuesday, Wednesday and Friday 10am to 4pm
- Thursday 2pm to 8pm
- first Saturday of each month, 10am to 2pm

In addition, we run lots of information events on specific topics. Look out for leaflets promoting the events, or pop in and see us!

Our address is: Collective, Temperance Hospital, 110 Hampstead Road, NW1 2LS.



For more information about HS2, visit the HS2 in Euston centre, or call our Community Relations team on 020 7944 4908



### Event feedback: Camden, Saturday 7 May

In early May we held an information event at Swiss Cottage School in North Camden. The purpose of the event was to discuss the planned vent shafts at Adelaide Road and Alexander Place, where HS2 will be underground.

Our technical experts talked to the 114 people that attended about this and other elements of the project, including construction generally, traffic,

noise, our work on reducing environmental impacts and what compensation was available. We agreed follow-up meetings with residents to talk about the issues that were raised in more detail.

If you'd like to know more about events near you, or the issues we discussed in Camden, please call us on 020 7944 4908.



## Upcoming events: Autumn 2016

There will be plenty more information events at HS2 in Euston in 2016. In the autumn, we'll be holding events to explain the following:

### **DBS CARRIAGE SHED DEMOLITION**

The carriage shed on the corner of Granby Terrace and Park Village East is due for demolition next year.

### **CODE OF CONSTRUCTION PRACTICE**

This document covers the detail of how we will manage and mitigate the effects of our construction programme on communities when work begins next year.

### **HAMPSTEAD ROAD BRIDGE**

The road bridge needs to be widened and raised to allow HS2 lines to pass underneath.

Once the dates and times have been confirmed, we'll send out invites to the community with more information.

## Useful links

### **RESIDENTS' CHARTER AND COMMISSIONER**

The Residents' Charter is our promise to communicate as clearly as we possibly can with people who live along or near the HS2 route. You can read it by visiting:

[www.gov.uk/government/publications/hs2-residents-charter](http://www.gov.uk/government/publications/hs2-residents-charter)

We also have an independent Residents' Commissioner whose job is to make sure we keep to the promises we make in the Charter and to keep it under constant review. The first of the Residents' Commissioner's reports is published at:

[www.gov.uk/government/publications/hs2-residents-commissioner-report-1-may-2015](http://www.gov.uk/government/publications/hs2-residents-commissioner-report-1-may-2015)

You can contact the Commissioner at:

[residentscommissioner@hs2.org.uk](mailto:residentscommissioner@hs2.org.uk)

### **PROPERTY AND COMPENSATION**


You can find out all about HS2 and properties along the line of route by visiting:

[www.gov.uk/government/collections/hs2-property](http://www.gov.uk/government/collections/hs2-property)

You can also find out if you're eligible for compensation at:

[www.gov.uk/claim-compensation-if-affected-by-hs2](http://www.gov.uk/claim-compensation-if-affected-by-hs2)

If you have any questions or you would like to find out more information please contact us:

 020 7944 4908

@ [HS2enquiries@hs2.org.uk](mailto:HS2enquiries@hs2.org.uk)

Please contact us if you would like a free copy of this leaflet in:

- Large print
- Braille
- Audio
- Easy read

You can also contact us for help and information in a different language.

If you're interested or concerned about a specific issue, or want to know more about our events, please get in touch with us. And if you've got any feedback on this newsletter, or would like to request we include an update on something in particular in our next issue, please let us know at the details above.

Welcome to High Speed Two's

# AUTUMN NEWSLETTER

We want to keep you up to date with what's happening over the next few months, as we prepare to build a new railway and redevelop Euston station.



## Preparing for construction

HS2 is a new railway that will link the cities of the North and the Midlands to London with fast, reliable travel. Euston will be the central London station for HS2 and we're planning to redevelop it with better connections and facilities for local people and the rest of London.

Preparatory works are already underway in the area. You may have seen our ground investigation teams checking services such as water mains and power cables under the streets around Euston.

As we move towards construction, we will be running lots of events at HS2 in Euston, our information centre on Hampstead Road.

These events are designed to let you know what's going on in your area and they are a great way to meet experts from HS2 and get answers to your questions. We recently welcomed our 700th visitor to HS2 in Euston. You'll find more about our opening times on the inside, so pop in to see us.

# Plans for the National Temperance Hospital

The old National Temperance Hospital building on Hampstead Road is being taken down as part of the HS2 project.

Keltbray, a specialist demolition company, have been awarded the contract to carry out the works. They have already begun work by preparing and securing the site. You will begin to see the building being taken down in late October. By March 2017, the Vezey Wing and link bridge will have been removed and the site will be made safe and secure. In the future, it will be used as the HS2 site office for all the works in the area.



## Water main diversion

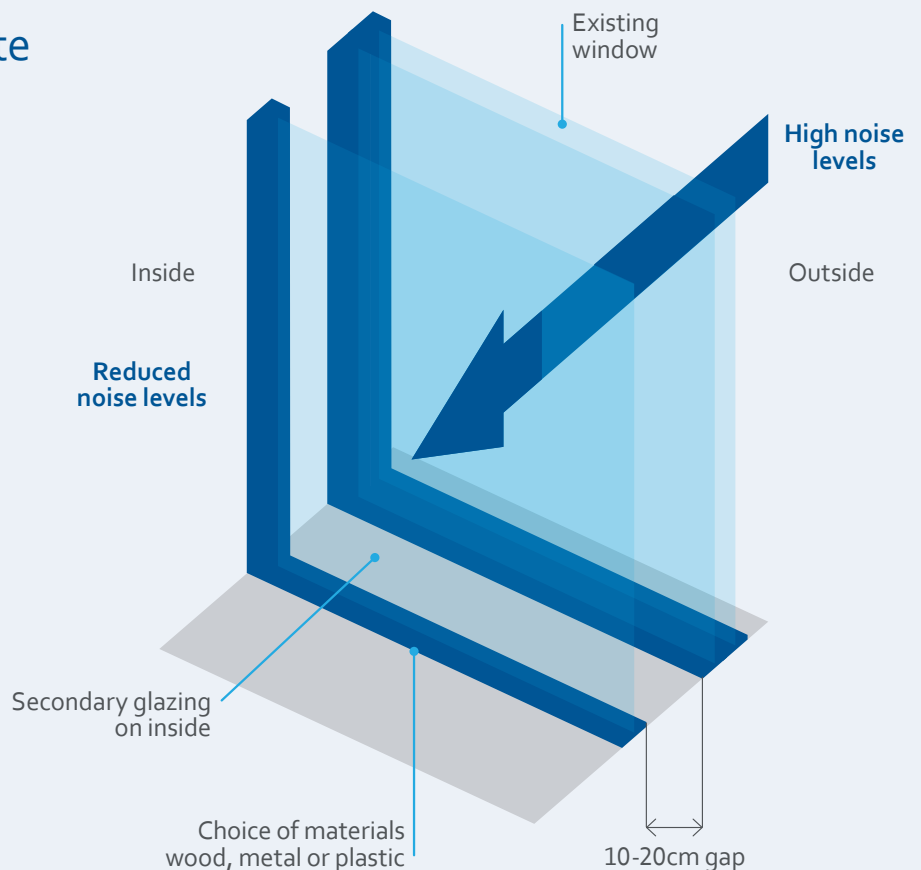
Working with Thames Water, we need to divert a water main pipe that supplies a number of north London properties. The first step is to dig trial trenches in Albany Street, Cumberland Market and Park Village East this autumn. We do this to see what's underground before starting on the main work on the street.

We'll be notifying residents, businesses, schools and churches of the traffic controls in place during the work. If you want to know more, we'll be holding a drop-in session on Thursday 3 November and Saturday 5 November at HS2 in Euston.

## Noise insulation update

We've written to people in the area who may be eligible for noise insulation to protect their homes against noise from HS2 works. If you have received an application pack, but haven't replied yet, please do so. We will be writing again to those who we haven't heard from so please take every opportunity to reply. If eligible, we will install secondary glazing and, where needed, ventilation unit and blinds.

**Illustrative example right: Secondary glazing fits on the inside of your window to reduce noise**



## Surgeries

If you're concerned about how HS2 could affect you, it might help to speak to an HS2 expert. Whether it's about you, your home, your business or even your route to work, you can talk to us confidentially by booking a one-to-one meeting.

You can call our helpdesk, email us or come and see us at HS2 in Euston. All the details you need are on the back page. To get the most out of your session, please let us know your question or queries in advance, so that we have the right information ready for you when you come along.

## Open evenings

We've set up monthly construction open evenings so you can hear from technical experts and ask questions about the project in Euston. The next one is on Thursday 22 September from 6pm to 8pm. There's no need to book – just come along.

## Giving feedback

We've launched an online version of our HS2 in Euston information centre. Head over to [hs2ineuston.commonplace.is](https://hs2ineuston.commonplace.is) to read about what's going on in Camden and leave your feedback on our construction plans.

You can also find out more information about the HS2 project on [www.gov.uk/hs2](http://www.gov.uk/hs2)

## HS2 in Euston

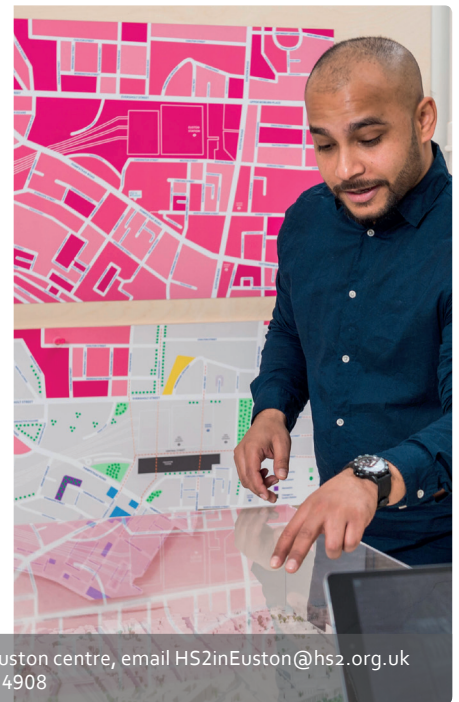
We've opened an information and resource centre in the middle of the Euston area where we can provide face-to-face contact for people wanting to know more about HS2 and how it will affect the Euston area.

We are open

- Tuesday, Wednesday and Friday 10am to 4pm
- Thursday 2pm to 8pm
- first Saturday of each month, 10am to 2pm

In addition, we run lots of information events on specific topics. Look out for leaflets promoting the events, or pop in and see us!

There is also a step-free, accessible entrance to HS2 in Euston.



For more information about HS2, visit the HS2 in Euston centre, email [HS2inEuston@hs2.org.uk](mailto:HS2inEuston@hs2.org.uk) or call our Community Relations team on 020 7944 4908



## Upcoming events: Autumn 2016

22 September – Construction open evening  
(Held in Surma Centre, on Hampstead Road, opposite HS2 in Euston)

29 September – Land & Property surgery\*

13 October – Construction surgery\*

20 October – Construction open evening

27 October – Land & property surgery\*

3 November – Water main diversion drop-in event

5 November – Water main diversion drop-in event


10 November – Construction surgery\*

17 November – Construction open evening

24 November – Land & property surgery\*

3 December – Drop-in session with HS2 experts \*booking required via HS2 helpline

If you have any questions or you would like to find out more information please contact us:

 020 7944 4908

@ HS2enquiries@hs2.org.uk

Please contact us if you would like a free copy of this leaflet in:

- Large print
- Braille
- Audio
- Easy read

You can also contact us for help and information in a different language.

## Useful links

### RESIDENTS' CHARTER AND COMMISSIONER

The Residents' Charter is our promise to communicate as clearly as we possibly can with people who live along or near the HS2 route. You can read it by visiting:

[www.gov.uk/government/publications/hs2-residents-charter](http://www.gov.uk/government/publications/hs2-residents-charter)

We also have an independent Residents' Commissioner whose job it is to make sure we keep to the promises we make in the charter and to keep it under constant review. The Residents' Commissioner's reports are published here:

[www.gov.uk/government/publications/hs2-residents-commissioner-report-1-may-2015](http://www.gov.uk/government/publications/hs2-residents-commissioner-report-1-may-2015)

You can contact the commissioner at:  
[residentscommissioner@hs2.org.uk](mailto:residentscommissioner@hs2.org.uk)

### PROPERTY AND COMPENSATION

You can find out all about HS2 and properties along the line of route by visiting:

[www.gov.uk/government/collections/hs2-property](http://www.gov.uk/government/collections/hs2-property)

Further information about property compensation schemes is available at:  
[www.gov.uk/claim-compensation-if-affected-by-hs2](http://www.gov.uk/claim-compensation-if-affected-by-hs2)

### CONSTRUCTION COMMISSIONER

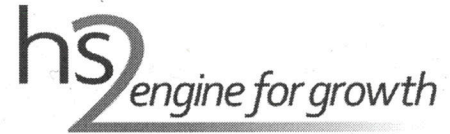
An independent Construction Commissioner has been appointed to help look into issues arising from the construction of HS2, which is on track to get under way next year. To find out more, visit:

[www.gov.uk/government/news/independent-hs2-construction-commissioner-appointed](http://www.gov.uk/government/news/independent-hs2-construction-commissioner-appointed)

If you're interested in or concerned about a specific issue, or want to know more about our events, please get in touch with us. And if you've got any feedback on this newsletter, or would like us to include an update on something in particular in our next issue, please let us know at [HS2inEuston@hs2.org.uk](mailto:HS2inEuston@hs2.org.uk)



[hs2ineuston.commonplace.is](http://hs2ineuston.commonplace.is)



Sanctuary Buildings  
5<sup>th</sup> Floor  
20 Great Smith Street  
London  
SW1P 3BT

28 July 2016

Dear Petitioner

### **High Speed Rail (London – West Midlands) Bill – House of Lords**

As you know, the intention is that the Euston petitioners will appear before the House of Lords Select Committee considering the Bill in September. I am writing to you now to draw your attention to various statements made by the Committee that you will want to bear in mind in preparing for your appearance, and to alert you to recent developments on two issues that were the subject of assurances given last year - the movement of material by rail and minimising the proposed height increase of the Hampstead Road Bridge.

#### *Preparing for Select Committee*

The Committee considering the Bill was appointed on 5 May 2016 to consider the issues raised by petitioners against the Bill. However, as the Bill was debated and approved at Second Reading in the House of Lords on 14 April 2016, the principle of the Bill is deemed to have been approved. Therefore, the Committee cannot reject the Bill outright or make any change that goes against the principle of the Bill.

At the very beginning of the Committee's hearings, on 19 May<sup>1</sup>, the Chairman, Lord Walker of Gestingthorpe, said:

"...we will be concerned only with petitions arguing for mitigation, compensation and adjustment to meet adverse effects on particular interests. We cannot entertain any objections to the principle or policy of the Bill, which was a matter for the Second Reading debate, which took place in the House of Lords on 14 April."

The Chairman also set out the Committee's initial view on requests made by petitioners for changes to the scheme that would require an Additional Provision to the Bill (that is to say that they would require powers which go beyond the scope of the existing Bill, such as requiring additional land, or would give rise to new significant environmental effects), namely that the Committee would not be

---

<sup>1</sup> The transcript can be found at <http://data.parliament.uk/writtenevidence/committeeevidence.svc/evidencedocument/high-speed-rail-london-west-midlands-bill-lords-committee/high-speed-rail-london-west-midlands-bill/oral/33501.html>



able to require the Promoter to bring forward Additional Provisions unless they received an instruction from the House of Lords at Second Reading, which did not occur.

As far as Euston is concerned, you will be aware that during the locus challenge hearing on the petition of the HS2 Euston Action Group on 7 June<sup>2</sup>, the Committee explained that they considered requests for a new design for Euston as falling within that category:

“THE CHAIRMAN: I will just ask you this question. I think you weren’t present in the Committee room this morning were you?”

MR LATHAM: I was indeed, my Lord.

THE CHAIRMAN: You will have heard a tentative and inconclusive discussion about additional provisions.

MR LATHAM: Indeed.

THE CHAIRMAN: It seems to me that a new design for Euston is almost certainly within that rubric. I say no more except that if you are successful on this application, it does not mean that you will in fact be in a position to run that particular ask.

MR LATHAM: My Lord, we are not seeking an alternative design, albeit that other petitioners may. What we are saying is that the promoter should not be given permission to proceed with the scheme until funding is in place and I don’t think that requires any additional provision.”

Notwithstanding their initial view, the Committee allowed Chiltern District Council and the London Borough of Hillingdon to make representations on the matter to ensure the contrary view was given a fair hearing. The Committee heard the case for the House of Lords Select Committee, as the Select Committee in the second House, to be able to require the Promoter to bring forward Additional Provisions on 30 June 2016<sup>3</sup>.

The Committee’s decision on the issue was announced on 7 July 2016<sup>4</sup> and usefully summarised, along with other advice on how petitioners might best present their cases, in the Chairman’s statement on 19 July<sup>5</sup>:

“With our proceedings about to break for the summer recess, the Committee wishes to issue some guidance which may prove useful to petitioners appearing in the future. As to our programme, we’ll be hearing from petitioners in the Euston and Camden areas in September. Then we will resume our south-bound progress down the line when the House returns after the Conference recess in October.

In the light of our ruling on additional provisions given on Thursday 7 July, we wish to make it absolutely clear that, in the absence of an instruction from the House, we will not hear argument for measures which would require an additional provision, that is, measures which would amount to significant changes to the scheme. In preparing their cases, petitioners should be extremely mindful of our limited powers. They will

---

<sup>2</sup> The transcript can be found at <http://data.parliament.uk/writtenevidence/committeeevidence.svc/evidencedocument/high-speed-rail-london-west-midlands-bill-lords-committee/high-speed-rail-london-west-midlands-bill/oral/34204.html>

<sup>3</sup> The transcript can be found at <http://data.parliament.uk/writtenevidence/committeeevidence.svc/evidencedocument/high-speed-rail-london-west-midlands-bill-lords-committee/high-speed-rail-london-west-midlands-bill/oral/34714.html>.

<sup>4</sup> The transcript can be found at <http://www.parliament.uk/business/committees/committees-a-z/lords-select/high-speed-rail-london-west-midlands-bill-select-committee-lords/hs2-publications/>.

<sup>5</sup> The transcript can be found at <http://www.parliament.uk/business/committees/committees-a-z/lords-select/high-speed-rail-london-west-midlands-bill-select-committee-lords/news-parliament-2015/statement-of-procedure/>.

be squandering their time if they choose to present proposals which would require an additional provision, just as they will if they present proposals which go against the principle of the Bill. Instead, they would be wise to focus on issues and solutions over which the Committee does have power to intervene.

The Committee also wishes to re-emphasise the merits of succinct and cogent presentations from petitioners and the desirability of petitioners grouping together to present a single case. Groups of petitioners from the same area are encouraged to appoint a lead petitioner to outline their case, with other petitioners from the group adding local detail where appropriate, instead of repeating the case. It is our clear view that there is no relationship between repetition and persuasiveness."

As a result, it is our view – though of course ultimately it is a matter for the Committee themselves - that on the grounds that they would be against the principle of the Bill and/or (and in the absence of an instruction) require an Additional Provision, the Committee would not be prepared to hear the case for:

- Euston Cross or Euston Express;
- High Speed UK (HSUK);
- Cross City Connect (CCC), the alternative scheme promoted by BuroHappold Engineering;
- Double Deck Down (DDD), DDD2 or DDD3\*; or
- that the intermediate station planned at Old Oak Common (OOC) be the permanent terminus for the scheme.

Whilst it may not be against the principle of the Bill or require an Additional Provision, our position on the proposal that OOC be used as an initial or temporary terminus for the scheme, perhaps for a significant period of time, whilst a revised scheme for Euston is developed and then brought forward for approval by other means, was made clear in the House of Commons Select Committee. It is our intention to deliver the HS2 scheme as soon as possible and to maximise the full benefits of the new railway and the accessibility that it will provide from the outset. The national importance of improving transport capacity and connectivity between Britain's major cities, and the wider economic and regeneration benefits that would accrue, is set out in the Strategic Case for HS2. Any delay such as that proposed would postpone the benefits that are the reason for promoting the Bill.

#### *Movement of material by rail*

Last year we gave an assurance to the London Borough of Camden and Transport for London to carry out a study to investigate options for increasing the movement of material by rail as far as reasonably practicable. We have held 10 workshops with the London Borough of Camden, Transport for London and Network Rail to examine options for removing material by rail from Euston and the findings from this work were set out in a report submitted to the Department for Transport. The report sets out HS2's position:

- "1.2.1 This study has sought ways to maximise, as far as reasonably practical, the movement of material by rail. Whilst recognising that decision making rests with the Secretary of State (as detailed in the assurances), this study leads HS2 to an initial conclusion that it would be possible and reasonable to implement both the platform 13 and platform 18 options with the current AP3 scheme<sup>6</sup> subject to confirmation that:

---

<sup>6</sup> These conclusions are based on the scheme currently before Parliament ahead of considerations by the House of Lords Select Committee and progression of further detailed design

- The passenger impacts can be mitigated to a reasonable level;
- The construction programme impacts can be mitigated; and
- Network Rail approve of the use of the platforms.

1.2.2 Subject to a decision from the Secretary of State, HS2 proposes the following course of action:

- HS2 and DfT continue to work with Network Rail to get clarity on passenger impacts and options for mitigation<sup>7</sup>
- HS2 continues to work over the next two years (including during further project development and detailed design/contractor design) to seek ways to mitigate the construction programme impacts. This will include engagement with LBC regarding options on construction arrangements, including working hours.”

The Secretary of State for Transport has confirmed that he accepts the recommendation in the report and the proposed next steps. A copy of the full study report was published on 27 July and a copy can be found at <https://www.gov.uk/government/publications/material-by-rail-euston-station-strategic-redevelopment-board-report>.

#### *Hampstead Road Bridge*

Last year we also gave an assurance to the London Borough of Camden and Transport for London to carry out a study to identify options that would achieve lower road levels at either end of the re-provided Hampstead Road Bridge in order to reduce the impact on local residents and neighbouring buildings as well as on non-motorised users of the A400 Hampstead Road. The recommendation of the study, which has been accepted by the Department for Transport, is to proceed with the option (Option 8) that would see the bridge being lowered by up to one meter compared to the current scheme. The full study report was published on 22 July and a copy can be found at <https://www.gov.uk/government/publications/the-hampstead-road-bridge-study-report-minimising-the-proposed-height-increase>.

Yours sincerely



**Roger Hargreaves**  
Director  
Hybrid Bill Delivery

<sup>7</sup> See Network Rail's comments in section 12.3 of the report