

HM Revenue & Customs

EB5 (PAYE) / EYU14

Message Implementation Guidelines For Earlier Year Update 13/14

EYU14 Version: 1.0

Status: Approved

Document Issue: 1.2

Issue Date: 12/09/2016

**Message Implementation Guidelines for PAYE Earlier Year Update
(2013/14)**

CONTENTS

| | |
|---|-----------|
| DOCUMENT HISTORY | 4 |
| GLOSSARY OF TERMS | 5 |
| 1. GETTING STARTED | 6 |
| 1.1. Who Should Read This? | 6 |
| 1.2. What is this Message About? | 6 |
| 1.3. Frequency | 6 |
| 1.4. Summary of Changes | 7 |
| 1.4.1. Changes at Version 1.1 | 7 |
| 1.4.2. Changes from Version 1.1 to Version 1.2 | 8 |
| 2. PROCESS OVERVIEW | 9 |
| 2.1. The Earlier Year Update | 9 |
| 2.2. RTI Messages | 9 |
| 2.2.1. Employer Payment Summary (EPS) | 9 |
| 2.2.2. Full Payment Submission (FPS) | 9 |
| 2.2.3. Employer Alignment Submission (EAS) | 9 |
| 2.2.4. Earlier Year Update (EYU) | 9 |
| 2.3. Data Flow | 10 |
| 2.4. Acknowledgement Reports from the EDI Translation Service | 11 |
| 2.4.1. Acknowledgement Reports from Levels 1 & 2 | 11 |
| 2.4.2. Acknowledgement Reports from Level 3 | 11 |
| 2.5. Testing and Recognition | 12 |
| 2.5.1. Test Service | 12 |
| 2.5.2. Recognition | 12 |
| 3. DATA FORMAT - GFF AND EDIFACT | 13 |
| 3.1. Generic Flat File Format (GFF) | 13 |
| 3.1.1. GFF Interchange | 13 |
| 3.1.2. GFF Submissions | 13 |
| 3.1.3. EDI Translation Service Validation / Rejection | 13 |
| 3.2. EDIFACT Format | 14 |
| 3.2.1. EDIFACT Interchange | 14 |
| 3.2.2. EDIFACT Message | 15 |
| 3.2.3. EDIFACT Submissions | 15 |
| 3.2.4. EDI Translation Service Validation / Rejection | 16 |
| 4. THE EYU14 MESSAGE | 17 |

Message Implementation Guidelines for PAYE Earlier Year Update (2013/14)

| | |
|---|------------|
| 5. EYU14 DATA ITEMS | 19 |
| 5.1. Field Status | 19 |
| 5.1.1. Mandatory Fields | 19 |
| 5.1.2. Optional Fields | 19 |
| 5.1.3. Validation Rules | 20 |
| 6. RECORD LAYOUTS | 44 |
| 6.1. GFF Layout | 44 |
| 6.1.1. GFF : EYU14 Example | 69 |
| 6.2. EDIFACT Layout | 70 |
| 6.2.1. EDIFACT : EYU14 Example | 119 |
| 7. PROCESSING CHECKLIST | 120 |
| 7.1. Registration | 120 |
| 7.2. Character Set | 120 |
| 7.3. Interchange Control References | 120 |
| 7.4. Monetary Values | 120 |
| 7.5. Monetary Values – TAX/MOA Pairing | 120 |
| 7.6. GFF Record Lengths | 121 |
| 7.7. Sending Data to HMRC | 121 |
| 7.8. Error Correction | 121 |
| APPENDIX A – EYU14 CHARACTER SETS | 122 |
| APPENDIX B – MODULUS 19 CALCULATION | 123 |
| APPENDIX C – National Insurance Number Prefix Validation Rules | 124 |

© HM Revenue & Customs 2016. All rights reserved.

**Message Implementation Guidelines for PAYE Earlier Year Update
(2013/14)**

Document History

| Version | Author | Date | Comments |
|---------|------------|------------|---------------------------------|
| 1.0 | Tony Burns | 28/06/2013 | Original |
| 1.1 | Tony Burns | 18/11/2013 | Minor documentation corrections |
| 1.2 | Tony Burns | 12/09/2016 | Amended to change Appendix C |

Message Implementation Guidelines for PAYE Earlier Year Update (2013/14)

Glossary of Terms

| Term | Description |
|-------------------------|--|
| AORef | Employer Accounts Office Reference |
| ASPP | Additional Statutory Paternity Pay |
| Bureau | An organisation transmitting PAYE information on behalf of a PAYE employer |
| EAS | Employer Alignment Submission |
| ECON | Employer's Contracted Out Number |
| EDI | Electronic Data Interchange |
| EDIFACT | Electronic Data Interchange for Administration, Commerce and Transport |
| Employer PAYE Reference | Unique reference supplied by the HMRC Office |
| EPS | Employer Payment Summary |
| EYU | Earlier Year Update |
| FPS | Full Payment Submission |
| GFF | Generic Flat File |
| HMRC | HM Revenue & Customs |
| HMRC Office Number | Also known as Tax District Number and Tax Office Number |
| ICR | Interchange Control Reference |
| MIG | Message Implementation Guidelines |
| NIC | National Insurance Contributions |
| NINO | National Insurance Number |
| NVREP | NINO Verification Response |
| NVREQ | NINO Verification Request |
| OSPP | Ordinary Statutory Paternity Pay |
| PAYE Scheme | HMRC Office Number followed by the Employer PAYE Reference |
| RTI | Real Time Information |
| SAP | Statutory Adoption Pay |
| SCON | Scheme Contracted Out Number |
| SMP | Statutory Maternity Pay |
| SSP | Statutory Sick Pay |
| Trading Partner | An EDI term for the Employer or Bureau exchanging data with HMRC |
| Vendor ID | A unique number allocated by HMRC to Software Developers |

1. GETTING STARTED

1.1. Who Should Read This?

This document is aimed at everyone involved in the development of the Earlier Year Update for Tax Year 2013/14 (EYU14) via EDI, particularly software designers and programmers producing the software for the EYU message.

1.2. What is this Message About?

The Earlier Year Update (EYU14) message is one of a suite of messages introduced to support the Real Time Information reporting by Employers. It is used to send data which will enable HMRC to update employee's payments for the previous Tax Year.

This document describes the information which must be sent by Employers/Bureaux to make these submissions to HMRC.

For EYU monetary values enter the difference, expressed in pence, between the Year to Date figure originally submitted on the employee's final FPS for the year and what the figure should be. For example:

- enter 50000 - if you recorded £500.00 too **little** pay on the employee's payroll record
- enter -20000 - if you recorded £200.00 too **much** pay on the employee's payroll record.

The other messages in the suite are:

Employer Alignment Submission (EAS): allows employers and HMRC to align employee records before the employer joins RTI.

Employer Payment Summary (EPS): includes data to enable HMRC to calculate the employer's liability.

Full Payment Submission (FPS): required each time an Employer makes a payment to an employee and includes Year to Date figures.

NINO Verification Request (NVREQ): allows employers to validate or obtain a NINO for an employee. Up to 100 requests may be made in one submission.

NINO Verification Reply (NVREP): the HMRC reply to employers in response to a NINO Verification Request. It can also be generated in response to RTI core processing, namely Employer Alignment Submission and Full Payment Submission messages.

1.3. Frequency

The EYU14 can be submitted from 20th April 2014 and the data correction relates to the previous Tax Year, e.g. an EYU14 submitted on 20 April 2014 would relate to Tax Year 06 April 2013 to 05 April 2014.

Message Implementation Guidelines for PAYE Earlier Year Update (2013/14)

1.4. Summary of Changes

EYU14 is a new year-related version of EYU for Tax Year 2013/14. This section documents the changes since the EYU message for the tax year 2012/2013. The data content has been updated to meet the 2013/2014 requirements as detailed below. The structure of the EYU message provided within this document is unchanged from the message published in the EYU13 MIG.

| Section | Rule No/ Qualifier | Segment Name | Change |
|-----------|-----------------------|---|---|
| 4 | n/a | Branching Diagram | Structure of Group 4 changed to accommodate new Data Items. |
| 5.1.3 | 10/329 | Date of Birth | Validation change to optional unless not 'Payment to a Non-Individual' when it is mandatory |
| 5.1.3 | 18A | Related Tax Year | Value changed to 2014 |
| 5.1.3 | 55 | Tax Code | Removal of value 'FT' from the allowable values |
| 5.1.3 | 129/172 | Gross Earnings For NICS | New Data Item |
| 5.1.3 | 130 to 135 | AT-LEL-EYU, LEL-to-PT-EYU, PT-to-UAP-EYU, UAP-to-UEL-EYU, Total of Employer NI Contributions-EYU, and Employees Contributions on all earnings-EYU | Segment/Record Name amended from 'TAX2/MOA2' to 'TAX3/MOA3' |
| 5.1.3 | 143 | NIC Refund | Segment/Record Name amended from 'ATT6' to 'ATT5' |
| 5.1.3 | 144 | Scheme Contracted Out Number (SCON) | New Data Item |
| 5.1.3 | 146 | Trivial Commutation Payment Type | New Data Item |
| 5.1.3 | 147/228 | Payment to a Non-Individual | New Data Item |
| 5.1.3 | n/a | Trivial Commutation Payment Group | New group which can occur up to 3 times and contains rules 146 and 148 |
| 5.1.3 | 148/173 | Trivial Commutation Payment Amount | New Data Item |
| 5.1.3 | 160/175 | Employee Pension Contributions-EYU | New Data Item |
| 5.1.3 | 161/176 | Pension Contributions Not Net-EYU | New Data Item |
| 5.1.3 | 165/174 | Benefits Taxed Via Payroll-EYU | New Data Item |
| 5.1.3 | T1 | Vendor ID | Rule changed to recommend inclusion in all submissions. |
| 6.1 & 6.2 | As above | GFF & EDIFACT Tables | Changes outlined above included |
| App B | n/a | Modulus 19 Calculation | Changed to include SCON. |
| | | | |
| | | | |

1.4.1. Changes at Version 1.1

Section 5.1.3 Validation Rules: Rules 55A & 56 corrected to show ATT6 instead of ATT4.

Section 6.2 EDIFACT Layout: Element NAD+EP changed from Mandatory to Optional.

1.4.2. Changes from Version 1.1 to Version 1.2

The following changes have been made to the document at Issue 1.2 as detailed below:

Documentation:

- **APPENDIX C – Valid National Insurance Number Prefixes:** Renamed as **National Insurance Number Prefix Validation** and content changed to replace the details of allowable prefixes with 3 validation rules.

2. PROCESS OVERVIEW

2.1. The Earlier Year Update

This document explains how employers can send their Earlier Year Update by EDI.

There are separate EDI Message Implementation Guidelines for the Employer Payment Summary (EPS), Employer Alignment Submission (EAS), Full Payment Submission (FPS), NINO Verification Request (NVREQ) and NINO Verification Reply (NVREP) messages.

2.2. RTI Messages

2.2.1. Employer Payment Summary (EPS)

The Employer Payment Summary (EPS) message includes data to enable HMRC to calculate the employer's liability.

2.2.2. Full Payment Submission (FPS)

This is the main RTI message type giving a breakdown of the calculation for each employee/pensioner on each payday.

2.2.3. Employer Alignment Submission (EAS)

This message allows employers and HMRC to align employee records before the employer joins RTI.

2.2.4. Earlier Year Update (EYU)

This message is used to send data which will enable HMRC to update employee's payments for the previous Tax Year.

2.2.5. NINO Verification Request (NVREQ): This message allows employers to validate or obtain a NINO for an employee. Up to 100 requests may be made in one submission.

2.2.6. NINO Verification Reply (NVREP): the HMRC reply to employers in response to a NINO Verification Request. It can also be generated in response to RTI core processing, namely Employer Alignment Submission and Full Payment Submission messages.

Message Implementation Guidelines for PAYE Earlier Year Update (2013/14)

2.3. Data Flow

RTI data, transferred from the employer payroll or HR system to the HMRC system, undergoes 3 levels of validation. An Acknowledgement Report (as indicated below) is generated after each stage of validation and indicates the acceptance or rejection of the submission.

Level 1 – the submission is transferred from the employer to the EDI Translation Service. If structural validation and certain RTI validation rules are successful, the data is transferred on to Level 2.

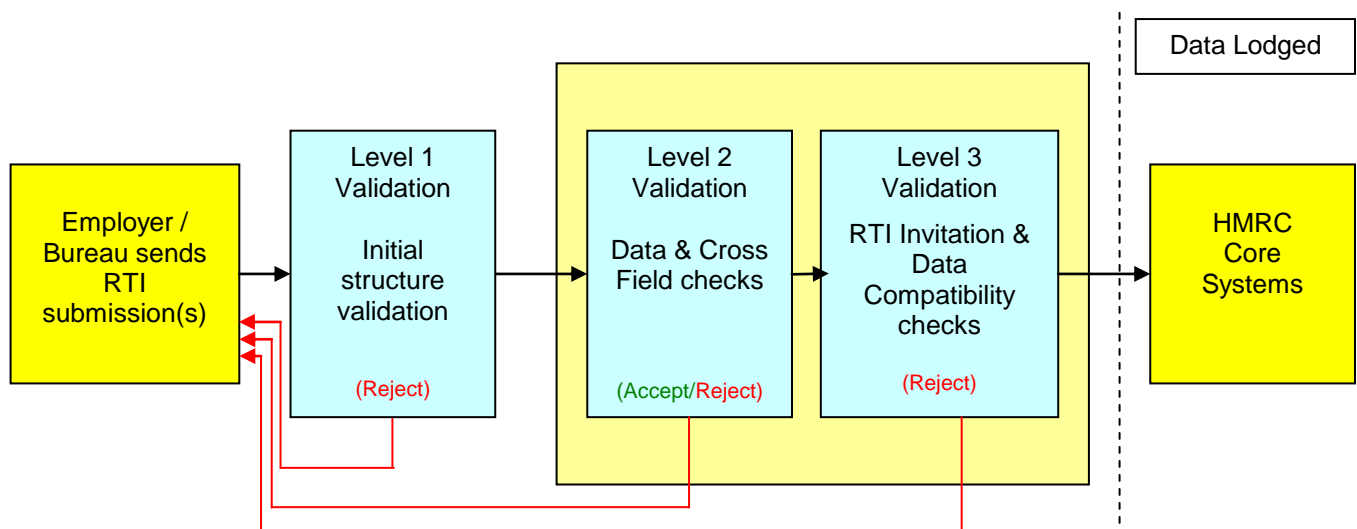
An Acknowledgement Report from Level 1 is emailed to the sender to report the rejection of each submission. Success reports are not generated at this level of validation.

Level 2 – the submission(s) undergoes data and cross-field checks. Each submission is validated separately. The acceptance of a submission at Level 2 indicates that it has been successfully validated against the HMRC business rules and can progress on to Level 3.

An Acknowledgement Report from Level 2 is emailed to the sender to report the acceptance or rejection of each submission accordingly.

Level 3 – Validation is performed to ensure that the submitter has been invited to make submissions via RTI. If so, further checks are made to ensure the validity of the submission. e.g. the PAYE Scheme Reference and the Employer Accounts Office Reference are compatible. If successful, the submission is passed to the HMRC core processing systems.

An Acknowledgement Report from Level 3 is only emailed to the sender to report the rejection of the RTI submission. Success reports are suppressed.



2.4. Acknowledgement Reports from the EDI Translation Service

An Acknowledgement Report is issued via email for every file submitted. As a transmission file can contain a mixture of RTI messages the acknowledgement report can also contain details for all these message types. This reports the acceptance or rejection of each GFF Interchange / EDIFACT message in a file.

A maximum of 8000 errors will be reported for a GFF Interchange or EDIFACT message.

Email systems, whilst usually reliable, are not a guaranteed form of communication. You should expect to receive the email Acknowledgement Report within 24 hours of submitting your file (typically much sooner).

If you do not receive this email, please contact the Online Services Helpdesk giving details of your file contents, e.g. a PAYE Scheme within the file. The Helpdesk will then investigate and respond to your query.

Online Services Helpdesk: 0300 200 3600 or helpdesk@ir-efile.gov.uk

The report will arrive as an attachment to the email. The attachment filename has a .csv extension and can be viewed using Microsoft Excel (or similar spreadsheet program).

As the report is generated as a .csv file, you will find some reformatting of cells may be required when it is opened, e.g. Format, Column, Autofit to display full details in each column. The report shows the status of each entry within the file as either "Accepted" or "Rejected".

Submissions which are shown as "Rejected" need to be corrected and re-submitted. To correct some errors, particularly structural errors, you may need to contact the Online Services Helpdesk for further explanation. In these cases, please quote the reference given in the Subject line of the email.

Please note that the email containing the Acknowledgement Report is automatically generated. If you just "reply" to the email with a query, you will not receive a response.

2.4.1. Acknowledgement Reports from Levels 1 & 2

An example of a .csv file issued by Level 1 or 2 is attached:



EYU14 Sample
Lev1and2 Ack.csv

2.4.2. Acknowledgement Reports from Level 3

As further validation is performed following Levels 1 & 2 it may be possible for an error to be identified following the issue of a Level 2 acceptance acknowledgement.

An example of a .csv file issued by Level 3 is attached. N.B. This will only be issued if an error is found:



EYU14 Sample Level
3 Ack.csv

2.5. Testing and Recognition

2.5.1. Test Service

HMRC has a test service for Software Developers who want to test their system development, and for employers and payroll bureaux to test extracts from their payroll systems.

(Employers/Bureaux who develop their own "in-house" software can be classed as Software Developers for testing purposes.)

All users must register with HMRC prior to submitting tests (see Section 7.1).

Upon registration Software Developers will be supplied with a 4 digit vendor ID. This should be present in end user live submissions as well as in Developer test submissions (see Record Layouts Sections 6.1 and 6.2).

All test submissions must have the Test Flag set in the 4* header record or UNB segment.

2.5.2. Recognition

Software Developers can ask HMRC to recognise that their product conforms to the system requirements. Details are on the HMRC website:

http://www.hmrc.gov.uk/ebu/rec_scheme.htm

Before HMRC can recognise a product, Software Developers must complete a series of scenarios, which are available from HMRC:

Online Services Helpdesk: 0300 200 3600 or helpdesk@ir-efile.gov.uk

3. DATA FORMAT - GFF AND EDIFACT

There are two formats that the EDI data can be sent in – Generic Flat File (GFF) or EDIFACT.

3.1. Generic Flat File Format (GFF)

This is a flat file of data containing a number of named records with the data in fixed length fields in the record - See Section 6.1 for detailed GFF layout.

A GFF transmission file, which is sent within a single communications session, can contain one or more GFF interchanges.

Interchanges within the transmission file can be for any RTI message types but interchanges of other message types are not allowed and will be rejected.

3.1.1. GFF Interchange

A GFF interchange starts with a 4* header record, which provides the data communication routing information, and ends with the CNT record.

The 4* header also contains the 'message type' – in this case the EYU14 message.

Each GFF interchange must be uniquely identified by an Interchange Control Reference (ICR). The ICR is contained within the 4* header.

3.1.2. GFF Submissions

A transmission file from a GFF Trading Partner may contain one or more GFF interchanges, i.e. 4* batches of records.

A Bureau may submit one transmission file containing several interchanges - one interchange per Employer PAYE Reference.

3.1.3. EDI Translation Service Validation / Rejection

Each GFF interchange is separately validated. If an interchange is rejected, only that rejected interchange will be discarded; subsequent interchanges will be processed, and if validated successfully, will be forwarded to HMRC for further processing. The Trading Partner will be informed of the interchange rejection and expected to resubmit only the corrected interchange.

3.2. EDIFACT Format

EDIFACT is an EDI standard which is a file containing a number of named records with the data in delimited fields in the record – See Section 6.2 for detailed EDIFACT layout.

A transmission file, which is sent within a single communications session, can contain one or more EDIFACT interchanges.

Interchanges within the transmission file can be for any RTI message types, but interchanges of other message types are not allowed and will be rejected.

3.2.1. EDIFACT Interchange

An EDIFACT interchange normally starts with a UNB Interchange Header, which provides the data communication routing information, and ends with a UNZ trailer. However, HMRC require the RTI messages accommodate a wider ranging character set and so UNOC has been used within UNB to incorporate the additional characters, replacing UNOA and UNOB. This means that in order to avoid transmission problems, especially for trading partners using the VANs, the character set separators need to be reset. This has been effected by using the UNA Service String Advice segment.

The UNA Service String Advice segment has a simple fixed format, and defines the codes which are being used as standard separators throughout the rest of the interchange, namely:

| | | |
|---------------|---|---|
| Apostrophe | ' | segment terminator |
| Plus sign | + | segment tag and data element separator |
| Colon | : | component data element separator |
| Period | . | decimal point (in numeric data elements only) |
| Space | | reserved for future use |
| Question Mark | ? | release character |

Each EDIFACT interchange must be uniquely identified by an Interchange Control Reference (ICR). The ICR is contained within the UNB Interchange Header.

An EDIFACT interchange can contain one or more EDIFACT messages.

All EDIFACT messages within the interchange must be of the same type, e.g. all EYU14 messages; there must not be a mix of messages within the one interchange.

3.2.2. EDIFACT Message

An EDIFACT message starts with a UNH header and ends with a UNT trailer.

The UNH header also contains the 'message type' – in this case the EYU14 message.

3.2.3. EDIFACT Submissions

A transmission file from an EDIFACT Trading Partner may contain one or more interchanges (UNA-UNZ) and each interchange may contain one or more messages.

An Employer/Bureau has a choice of how data can be submitted for multiple Employer PAYE References:

1. One transmission file containing only one interchange (UNA-UNZ), and have multiple messages (UNH-UNT) within that single interchange - one message per Employer PAYE Reference.
2. One transmission file containing several interchanges (UNA-UNZ) - one interchange per Employer PAYE Reference.
3. One transmission file per Employer PAYE Reference.

See examples below.

Example 1.

Transmission File1:

UNA
UNB
UNH - UNT for EYU14 for Employer 1
UNH - UNT for EYU14 for Employer 2
UNH - UNT for EYU14 for Employer 3
UNZ

Example 2.

Transmission File 1:

UNA, UNB, UNH - UNT, UNZ for EYU14 for Employer 1
UNA, UNB, UNH - UNT, UNZ for EPS15 for Employer 2
UNA, UNB, UNH - UNT, UNZ for NVREQ for Employer 3

Example 3.

Transmission File 1: UNA, UNB, UNH - UNT, UNZ for EYU14 for Employer 1

Transmission File 2: UNA, UNB, UNH - UNT, UNZ for EPS15 for Employer 2

Transmission File 3: UNA, UNB, UNH - UNT, UNZ for NVREQ for Employer 3

3.2.4. EDI Translation Service Validation / Rejection

Each EDIFACT message is separately validated. If a message is rejected, only that rejected message will be discarded; subsequent messages will be processed, and if validated successfully, will be forwarded to HMRC for further processing. The Trading Partner will be informed of the message rejection and expected to resubmit only the corrected message.

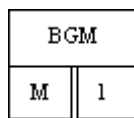
4. THE EYU14 MESSAGE

The following page shows the EYU14 branching diagram which, on the whole, applies to both the GFF interchange and the EDIFACT message.

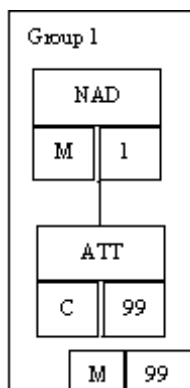
The UNH and UNT segments, shown on the branching diagram, only apply to the EDIFACT message; they do not apply to the GFF interchange, which starts with a 4* header record and is followed by a BGM1 record.

The diagram shows the sequence the data appears in, whether the data record/segment is mandatory or Optional and the maximum number of repetitions of the record/segment.

The diagram is presented in two sections, the Header section and the Summary section which both appear once.



A segment is shown as a box with the segment name. It also shows whether it is mandatory or Optional and the number of times it may occur. The BGM, Beginning of Message segment, is Mandatory and can only occur once in the message.



A segment group is shown enclosed in its group box, with the mandatory or Optional status of the group and the number of times it may occur given in the bottom right hand corner.

In this example, Group 1 is mandatory; it must occur once and can occur up to 99 times. The sequence of the data within the group is that it must start with a NAD (Name and Address segment) and can be followed by up to 99 ATT (Attribute segments).

The normal structure in the EYU14 message is for a NAD segment qualified with qualifier BG (Employer) to be followed by an ATT segment qualified with qualifier 7 (Employer reference) and an ATT segment qualified with qualifier 103 (Employer Accounts Office Reference Number). The Group then repeats with a NAD qualified with qualifier TC (HMRC Office) followed by an ATT segment qualified with qualifier 17 (HMRC Office Number).

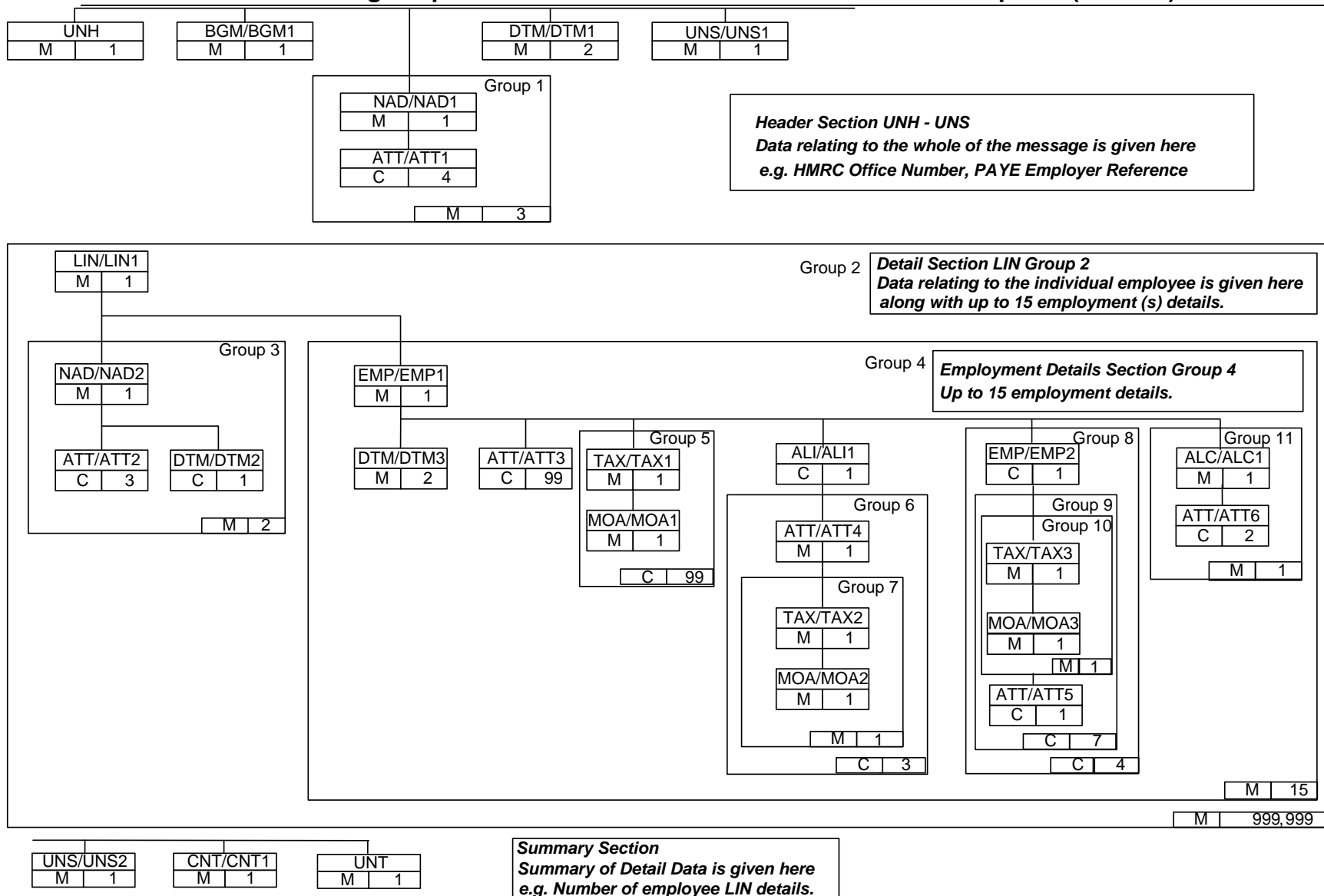
GFF

EDIFACT

NAD1A BG
ATT1 7 AZ12345
ATT1 103 123PQ7654321X
NAD1A TC
ATT1 17 123

NAD+BG'
ATT+ZZZ++7:2:IR:AZ12345'
ATT+ZZZ++103:2:IR:123PQ7654321X
NAD+TC'
ATT+ZZZ++17:2:IR:123'

Message Implementation Guidelines for PAYE Earlier Year Update (2013/14)



5. EYU14 DATA ITEMS

The table in Section 5.1.3 lists the data items supported by the EYU message.

The table also indicates the segments and qualifier used to contain each of the business fields/data items and indicates whether the field is Mandatory or Optional.

e.g. Section 5.1.3 states that the HMRC Office Number is Mandatory and must be contained within the ATT segment with qualifier = 17.

5.1. Field Status

5.1.1. Mandatory Fields

Mandatory fields are required by HMRC and must be provided by the Employer.

Mandatory fields must appear in the correct format.

If mandatory fields are omitted or provided in an incorrect format, the message will be rejected. See Section 6 for further details of record layouts and the format of specific fields.

5.1.2. Optional Fields

Optional fields may become mandatory in accordance with the business requirements or due to the presence/absence of other optional data items, e.g. Address Lines 1 and 2 are mandatory if Start Date is present or NINO is absent.

When optional fields are provided, they must appear in the correct format.

If optional fields are provided in an incorrect format or if optional fields are omitted when they should have been provided, the message will be rejected. See Section 6 for further detail of Record Layouts.

Message Implementation Guidelines for PAYE Earlier Year Update (2013/14)

5.1.3. Validation Rules

| Validation Rule/Data Item Number | EYU14 Field Name <i>Validation Rules</i> Alpha = A-Z (upper case) a-z (lower case), Numeric = 0-9 Alphanumeric = any character within the <i>designated character sets</i> – see <i>Appendix A</i> | Maximum Field Length | Status | Format / Character Set | Segment / Record Name | Qualifier (incorrectly qualified segments will cause the message to be rejected) |
|----------------------------------|--|----------------------|-----------|------------------------|-----------------------|---|
| 1 | HMRC Office Number <i>Must be Numeric in the range 001 – 999. Leading zeros must be present.</i> | 3 | Mandatory | Numeric | ATT/ ATT1 | 17 |
| 2 | Employer PAYE Reference` <i>Allowable characters are shown in Character Set B</i> <i>The first character must not be a space</i> <i>The combination of HMRC Office Number and Employer PAYE Reference must be valid for live submissions</i> | 10 | Mandatory | Alphanumeric | ATT/ ATT1 | 7 |

Message Implementation Guidelines for PAYE Earlier Year Update (2013/14)

| Validation Rule/Data Item Number | EYU14 Field Name <i>Validation Rules</i> Alpha = A-Z (upper case) a-z (lower case), Numeric = 0-9 Alphanumeric = any character within the <i>designated character sets</i> – see <i>Appendix A</i> | Maximum Field Length | Status | Format / Character Set | Segment / Record Name | Qualifier (incorrectly qualified segments will cause the message to be rejected) |
|----------------------------------|---|----------------------|------------------|------------------------|-----------------------|---|
| 3 | Employer Accounts Office Reference Number <i>The Employer Accounts Office Reference Number must be in the format</i> <ul style="list-style-type: none"> • <i>characters 1-3 must be numeric</i> • <i>character 4 must be 'P'</i> • <i>character 5 must be alpha</i> • <i>characters 6-12 must be numeric</i> • <i>character 13 must be numeric or 'X'</i> <i>Note: leading zero's should be used to pad out fields 1-3 and 6-13 if necessary</i> | 13 | Mandatory | Alphanumeric | ATT/ ATT1 | 103 |
| 4 | Employer Name <i>Character 1 must be Alphanumeric and not a space; remaining characters must conform to Character Set A</i> | 35 | Mandatory | Alphanumeric | NAD/ NAD1 | BG |

Message Implementation Guidelines for PAYE Earlier Year Update (2013/14)

| Validation Rule/Data Item Number | EYU14 Field Name <i>Validation Rules</i> Alpha = A-Z (upper case) a-z (lower case), Numeric = 0-9 Alphanumeric = any character within the <i>designated character sets</i> – see <i>Appendix A</i> | Maximum Field Length | Status | Format / Character Set | Segment / Record Name | Qualifier (incorrectly qualified segments will cause the message to be rejected) |
|----------------------------------|--|----------------------|------------------|------------------------|-----------------------|---|
| 5 | National Insurance Number <i>Should be provided if available to the Employer</i> <i>Must be valid format If present:</i> <ul style="list-style-type: none"> Characters 1 & 2 must be alpha and must be a valid prefix – See <i>Appendix C</i> Characters 3 – 8 must be numeric Character 9 must be A, B, C, D or space | 9 | Optional | Alphanumeric | ATT/ ATT2 | 11 |
| 5A | Title <i>Character 1 must be Alpha and not a space; remaining characters must conform to Character Set of C.</i> | 35 | Optional | Alpha | NAD/ NAD2 | BV |
| 6 | Surname or Family Name <i>Character 1 must be Alpha and not a space; remaining characters must conform to Character Set D.</i> | 35 | Mandatory | Alpha | NAD/ NAD2 | BV |
| 7 | Forename or Given Name <i>Character 1 must be Alpha and not a space; remaining characters must conform to Character Set D.</i> | 35 | Mandatory | Alpha | NAD/ NAD2 | BV |

Message Implementation Guidelines for PAYE Earlier Year Update (2013/14)

| Validation Rule/Data Item Number | EYU14 Field Name <i>Validation Rules</i> Alpha = A-Z (upper case) a-z (lower case), Numeric = 0-9 Alphanumeric = any character within the <i>designated character sets</i> – see Appendix A | Maximum Field Length | Status | Format / Character Set | Segment / Record Name | Qualifier (incorrectly qualified segments will cause the message to be rejected) |
|----------------------------------|--|----------------------|-----------|------------------------|-----------------------|---|
| 9 | Second Forename or Given Name <i>Character 1 must be Alpha and not a space; remaining characters must conform to Character Set D.</i> <i>Must not be present if Forename or Given Name not present</i> | 35 | Optional | Alpha | NAD/ NAD2 | BV |
| 10 | Date of Birth Mandatory if Payment to a Non-Individual not present Must be a valid calendar date in the appropriate format. <i>Must be today or earlier.</i> <i>Must be later than 130 years before today</i> | 8 | Optional | Numeric | DTM/ DTM2 | 329 |
| 11 | Current Gender <i>Must be 'F' or 'M'</i> <i>If Current Gender = "M", NILetter-EYU cannot be B, E, O or T</i> | 1 | Mandatory | Alpha | ATT/ ATT2 | 9 |
| 12 | Passport Number <i>If present must conform to Character Set B.</i> | 35 | Optional | Alphanumeric | ATT/ ATT2 | 201 |

Message Implementation Guidelines for PAYE Earlier Year Update (2013/14)

| Validation Rule/Data Item Number | EYU14 Field Name <i>Validation Rules</i> Alpha = A-Z (upper case) a-z (lower case), Numeric = 0-9 Alphanumeric = any character within the <i>designated character sets</i> – see Appendix A | Maximum Field Length | Status | Format / Character Set | Segment / Record Name | Qualifier (incorrectly qualified segments will cause the message to be rejected) |
|----------------------------------|---|----------------------|----------|------------------------|-----------------------|--|
| 13 | Address Line 1 Mandatory if any Start Date is present or NINO is absent <i>If present must conform to designated Character Set B</i> <i>First Character must be 0-9, A-Z or a-z.</i> <i>n.b. must be present if Foreign Country is present</i> | 35 | Optional | Alphanumeric | NAD/ NAD2 | BV |
| 14 | Address Line 2 Mandatory if any Start Date is present or NINO is absent <i>Cannot be present if Address Line 1 is absent</i> <i>If present must conform to Character Set B</i> <i>First Character must be 0-9, A-Z or a-z.</i> <i>n.b. must be present if Foreign Country is present</i> | 35 | Optional | Alphanumeric | NAD/ NAD2 | BV |
| 15 | Address Line 3 <i>Cannot be present if Address Line 2 is absent</i> <i>If present must conform to Character Set B</i> <i>First Character must be 0-9, A-Z or a-z.</i> | 35 | Optional | Alphanumeric | NAD/ NAD2 | BV |

Message Implementation Guidelines for PAYE Earlier Year Update (2013/14)

| Validation Rule/Data Item Number | EYU14 Field Name <i>Validation Rules</i> Alpha = A-Z (upper case) a-z (lower case), Numeric = 0-9 Alphanumeric = any character within the <i>designated character sets</i> – see Appendix A | Maximum Field Length | Status | Format / Character Set | Segment / Record Name | Qualifier (incorrectly qualified segments will cause the message to be rejected) |
|----------------------------------|--|----------------------|----------|------------------------|-----------------------|---|
| 16 | Address Line 4 <i>Cannot be present if Address Line 3 is absent</i> <i>If present must conform to Character Set B</i> <i>First Character must be 0-9, A-Z or a-z.</i> | 35 | Optional | Alphanumeric | NAD/ NAD2 | BV |
| 17 | UK Postcode <i>If present must be Alphanumeric conforming to Character Set E.</i> <i>First character must not be space.</i> <i>n.b. must not be present if Foreign Country is present</i> | 10 | Optional | Alphanumeric | NAD/ NAD2 | BV |
| 18 | Foreign Country <i>If present must be Alphanumeric conforming to Character Set B.</i> <i>First character must be alpha (A-Z or a-z)</i> <i>If present Address Lines 1 & 2 must be present</i> <i>Must not be present If UK Postcode is present.</i> | 35 | Optional | Alphanumeric | NAD/ NAD2 | BV |

Message Implementation Guidelines for PAYE Earlier Year Update (2013/14)

| Validation Rule/Data Item Number | EYU14 Field Name <i>Validation Rules</i> Alpha = A-Z (upper case) a-z (lower case), Numeric = 0-9 Alphanumeric = any character within the <i>designated character sets</i> – see <i>Appendix A</i> | Maximum Field Length | Status | Format / Character Set | Segment / Record Name | Qualifier (incorrectly qualified segments will cause the message to be rejected) |
|----------------------------------|--|----------------------|------------------|------------------------|-----------------------|---|
| 18A | Related Tax Year - (<i>Income Tax Year to which submission relates</i>) <i>Must be 2014</i> | 4 | Mandatory | Numeric | DTM/ DTM1 | 166 |

Message Implementation Guidelines for PAYE Earlier Year Update (2013/14)

| Validation Rule/Data Item Number | EYU14 Field Name <i>Validation Rules</i> Alpha = A-Z (upper case) a-z (lower case), Numeric = 0-9 Alphanumeric = any character within the <i>designated character sets</i> – see Appendix A | Maximum Field Length | Status | Format / Character Set | Segment / Record Name | Qualifier (incorrectly qualified segments will cause the message to be rejected) |
|----------------------------------|--|----------------------|----------|------------------------|-----------------------|---|
| 24 | Start Date <i>If present at least one of:</i> <i>Starting Declaration,</i> <i>Intend to Stay 183 days or more,</i> <i>Intend to Stay less than 183 days or</i> <i>Intend to work both in and out of the UK</i> <i>must be present</i> OR <i>If present Annual Amount of Occupational Pension must be > 0</i> <i>Must be a valid calendar date in the appropriate format.</i> <i>For live files must be no later than current date plus 30 days or earlier, i.e. any date in the past allowed</i> <i>For test files must be in the current Tax Year + 1 or earlier</i> <i>If present Address Lines 1 and 2 must be present</i> | 8 | Optional | Numeric | DTM /DTM3 | 330 |

Message Implementation Guidelines for PAYE Earlier Year Update (2013/14)

| Validation Rule/Data Item Number | EYU14 Field Name <i>Validation Rules</i> Alpha = A-Z (upper case) a-z (lower case), Numeric = 0-9 Alphanumeric = any character within the <i>designated character sets</i> – see Appendix A | Maximum Field Length | Status | Format / Character Set | Segment / Record Name | Qualifier (incorrectly qualified segments will cause the message to be rejected) |
|----------------------------------|--|----------------------|----------|------------------------|-----------------------|---|
| 24A | Starting Declaration <i>Must not be present if any of:</i> <ul style="list-style-type: none"> • <i>Annual Amount of Occupational Pension is present or</i> • <i>Intend to Stay 183 days or more or</i> • <i>Intend to Stay less than 183 days or</i> • <i>Intend to work both in and out of the UK</i> <i>are present</i> OTHERWISE Mandatory if Start Date is present <i>Must be 'A', 'B' or 'C'</i> <i>A (This is my first job since 6th April)</i> <i>B (This is my only job)</i> <i>C (I have another job or pension)</i> | 1 | Optional | Alpha | ATT/ATT3 | 5 |
| 27 | Indicator of Student Loan deduction needed <i>If present must be 'Y'</i> | 1 | Optional | Alpha | ATT/ATT3 | 21 |

Message Implementation Guidelines for PAYE Earlier Year Update (2013/14)

| Validation Rule/Data Item Number | EYU14 Field Name <i>Validation Rules</i> Alpha = A-Z (upper case) a-z (lower case), Numeric = 0-9 Alphanumeric = any character within the <i>designated character sets</i> – see <i>Appendix A</i> | Maximum Field Length | Status | Format / Character Set | Segment / Record Name | Qualifier (incorrectly qualified segments will cause the message to be rejected) |
|----------------------------------|--|----------------------|----------|------------------------|-----------------------|---|
| 28 | Intend to Stay 183 days or more <i>If present must be 'Y'</i> <i>Only one of Intend to Stay 183 days or more, Intend to Stay less than 183 days or Intend to work both in and out of the UK may be present if the employee is seconded to work in the UK.</i> | 1 | Optional | Alpha | ATT/ ATT3 | 202 |
| 29 | Intend to Stay less than 183 days <i>If present must be 'Y'</i> <i>Only one of Intend to Stay 183 days or more, Intend to Stay less than 183 days or Intend to work both in and out of the UK may be present if the employee is seconded to work in the UK.</i> | 1 | Optional | Alpha | ATT/ ATT3 | 203 |
| 30 | Intend to work both in and out of the UK <i>If present must be 'Y'</i> <i>Only one of Intend to Stay 183 days or more, Intend to Stay less than 183 days or Intend to work both in and out of the UK may be present if the employee is seconded to work in the UK</i> | 1 | Optional | Alpha | ATT/ ATT3 | 204 |

Message Implementation Guidelines for PAYE Earlier Year Update (2013/14)

| Validation Rule/Data Item Number | EYU14 Field Name <i>Validation Rules</i> Alpha = A-Z (upper case) a-z (lower case), Numeric = 0-9 Alphanumeric = any character within the <i>designated character sets</i> – see <i>Appendix A</i> | Maximum Field Length | Status | Format / Character Set | Segment / Record Name | Qualifier (incorrectly qualified segments will cause the message to be rejected) |
|----------------------------------|---|----------------------|----------|------------------------|----------------------------------|---|
| 31 | EEA Citizen <i>If present one of Intend to Stay 183 days or more, Intend to Stay less than 183 days or Intend to work both in and out of the UK must be present</i> <i>If present must be 'Y'</i> | 1 | Optional | Alpha | ATT/ ATT3 | 60 |
| 31A | Indicator that this is an EPM6 (Modified) scheme <i>If present must be 'Y'</i> | 1 | Optional | Alpha | ATT/ ATT3 | 61 |
| 33 | Employee Receiving Occupational Pension Because is a Recently Bereaved Spouse/Civil Partner <i>If present must be 'Y'</i> | 1 | Optional | Alpha | ATT/ ATT3 | 205 |
| 34 | Annual Amount of Occupational Pension <i>Must be present if Employee Receiving Occupational Pension Because is a Recently Bereaved Spouse/Civil Partner is present</i> <i>If present, must be greater than or equal zero</i> | 11 (pence) | Optional | numeric | TAX/ MOA TAX1/ MOA1 | 151 |
| 38 | Payroll ID <i>If present must conform to Character Set B.</i> <i>First character must not be a space.</i> | 35 | Optional | Alphanumeric | ATT/ ATT3 | 19 |

Message Implementation Guidelines for PAYE Earlier Year Update (2013/14)

| Validation Rule/Data Item Number | EYU14 Field Name <i>Validation Rules</i> Alpha = A-Z (upper case) a-z (lower case), Numeric = 0-9 Alphanumeric = any character within the <i>designated character sets</i> – see Appendix A | Maximum Field Length | Status | Format / Character Set | Segment / Record Name | Qualifier (incorrectly qualified segments will cause the message to be rejected) |
|----------------------------------|--|----------------------|-----------|------------------------|-----------------------|--|
| 41 | Date of Leaving <i>Must be a valid calendar date in the appropriate format.</i> <i>For live files must be later than the start of the Related Tax Year minus 6 and not exceed 30 days after current date.</i> <i>For test files must be later than the start of the Related Tax Year minus 6 and not exceed the end of the Related Tax Year plus 1</i> | 8 | Optional | Numeric | DTM/ DTM3 | 337 |
| 55 | Tax Code <i>Tax code operated on this payment.</i> <i>Valid formats are:</i> 1) <i>nnnnnnx</i> <i>where nnnnnn is in the range 1 to 999999 and x is one of L, P, T or Y. Leading zeros are not allowed, e.g. 00467L is invalid</i> 2) <i>Knnnnnn</i> <i>where nnnnnn is in the range 1 to 999999</i> <i>Leading zeros are not allowed, e.g. K005 is invalid</i> 3) <i>BR, 0T, D0, D1, or NT</i> NB <i>Leading zeros are not allowed except for code 0T. e.g. 00467L and K005 are invalid.</i> | 7 | Mandatory | Alphanumeric | ALC/ ALC1 | 4 |

Message Implementation Guidelines for PAYE Earlier Year Update (2013/14)

| Validation Rule/Data Item Number | EYU14 Field Name <i>Validation Rules</i> Alpha = A-Z (upper case) a-z (lower case), Numeric = 0-9 Alphanumeric = any character within the <i>designated character sets</i> – see Appendix A | Maximum Field Length | Status | Format / Character Set | Segment / Record Name | Qualifier (incorrectly qualified segments will cause the message to be rejected) |
|----------------------------------|--|----------------------|----------|------------------------|-----------------------|---|
| 55A | Scottish Variable Rate (SVR) Indicator <i>Not used - Reserved for future use</i> | 1 | Optional | Alpha | ATT/ ATT6 | 1 |
| 56 | Week 1 / Month 1 Indicator (<i>Tax code basis is non cumulative</i>) <i>If present must be 'Y'</i> <i>If present Tax Code must also be present</i> | 1 | Optional | Alpha | ATT/ ATT6 | 2 |
| 74 | Partner Surname or Family Name Mandatory if Partner Details applicable <i>If present:</i> <i>Character 1 must be Alpha and not a space;</i> <i>Remaining characters must conform to the Character Set D.</i> Additional Statutory Paternity Pay-EYU must be present. | 35 | Optional | Alphanumeric | NAD/ NAD2 | EP |
| 75 | Partner Forename or Given Name Mandatory if Partner Surname or Family Name is present <i>If present:</i> <i>Character 1 must be Alpha and not a space;</i> <i>Remaining characters must conform to character set of D.</i> <i>Additional Statutory Paternity Pay-EYU must be present.</i> | 35 | Optional | Alphanumeric | NAD/ NAD2 | EP |

Message Implementation Guidelines for PAYE Earlier Year Update (2013/14)

| Validation Rule/Data Item Number | EYU14 Field Name <i>Validation Rules</i> Alpha = A-Z (upper case) a-z (lower case), Numeric = 0-9 Alphanumeric = any character within the <i>designated character sets</i> – see Appendix A | Maximum Field Length | Status | Format / Character Set | Segment / Record Name | Qualifier (incorrectly qualified segments will cause the message to be rejected) |
|----------------------------------|---|----------------------|----------|------------------------|-----------------------|---|
| 77 | Partner Second Forename or Given Name <i>If present:</i> <i>Character 1 must be Alpha and not a space; remaining characters must conform to Character Set of D.</i> <i>Partner Forename or Given Name must be present.</i> <i>Additional Statutory Paternity Pay-EYU must be present.</i> | 35 | Optional | Alphanumeric | NAD/ NAD2 | EP |
| 78 | Partner National Insurance Number <i>Must be valid format if present:</i> <i>Characters 1 & 2 must be alpha and must be a valid prefix – See Appendix C</i> <i>Characters 3 – 8 must be numeric</i> <i>Character 9 must be A, B, C, D or space</i> <i>Additional Statutory Paternity Pay-EYU must be present.</i> | 9 | Optional | Alphanumeric | ATT/ ATT2 | 217 |

Message Implementation Guidelines for PAYE Earlier Year Update (2013/14)

| Validation Rule/Data Item Number | EYU14 Field Name <i>Validation Rules</i> Alpha = A-Z (upper case) a-z (lower case), Numeric = 0-9 Alphanumeric = any character within the <i>designated character sets</i> – see <i>Appendix A</i> | Maximum Field Length | Status | Format / Character Set | Segment / Record Name | Qualifier (incorrectly qualified segments will cause the message to be rejected) |
|----------------------------------|---|------------------------------------|----------|------------------------|--------------------------|---|
| 110 | Employer Contracted Out Number (ECON) Mandatory if NILletter-EYU is one of: D, E, L, N, O. <i>If present format must be:</i> <ol style="list-style-type: none"> Character 1 must be alpha - "E". Characters 2 - 8 must be numeric in the range 3000000 - 3999999. Character 9 must be Alpha. <i>The 9th character must pass the modulus 19 check (see Appendix B)</i> | 9 | Optional | Alphanumeric | ATT/ATT1 | 6 |
| 120 | Taxable Pay-EYU <i>Taxable pay including taxable benefits undertaken through payroll</i> | 11 (pence) plus –ve sign | Optional | Numeric | TAX/MOA TAX1/MOA1 | 153 |
| 121 | Tax <i>Value of tax deducted or refunded from this payment</i> | 12 (pence) plus –ve sign | Optional | Numeric | TAX/MOA TAX1/MOA1 | 165 |

Message Implementation Guidelines for PAYE Earlier Year Update (2013/14)

| Validation Rule/Data Item Number | EYU14 Field Name <i>Validation Rules</i> Alpha = A-Z (upper case) a-z (lower case), Numeric = 0-9 Alphanumeric = any character within the <i>designated character sets</i> – see <i>Appendix A</i> | Maximum Field Length | Status | Format / Character Set | Segment / Record Name | Qualifier (incorrectly qualified segments will cause the message to be rejected) |
|----------------------------------|--|-----------------------------------|----------|------------------------|----------------------------------|---|
| 122 | Student Loan Repayment-EYU <i>Value of Student Loan Repayment</i> <i>Must be a whole pounds figure expressed in pence,</i> <i>e.g. £45.00 would be expressed as 4500</i> | 7 (pence) plus –ve sign | Optional | Numeric | TAX/ MOA TAX1/ MOA1 | 164 |
| 123 | Statutory Sick Pay (SSP)-EYU | 6 (pence) plus –ve sign | Optional | Numeric | TAX/ MOA TAX1/ MOA1 | 66 |
| 124 | Statutory Maternity Pay (SMP)-EYU <i>If present, Current Gender must be female (F)</i> | 8 (pence) plus –ve sign | Optional | Numeric | TAX/ MOA TAX1/ MOA1 | 65 |
| 125 | Ordinary Statutory Paternity Pay (OSPP)-EYU | 8 (pence) plus –ve sign | Optional | Numeric | TAX/ MOA TAX1/ MOA1 | 126 |

Message Implementation Guidelines for PAYE Earlier Year Update (2013/14)

| Validation Rule/Data Item Number | EYU14 Field Name <i>Validation Rules</i> Alpha = A-Z (upper case) a-z (lower case), Numeric = 0-9 Alphanumeric = any character within the <i>designated character sets</i> – see <i>Appendix A</i> | Maximum Field Length | Status | Format / Character Set | Segment / Record Name | Qualifier (incorrectly qualified segments will cause the message to be rejected) |
|----------------------------------|--|-----------------------------------|----------|------------------------|----------------------------------|---|
| 126 | Statutory Adoption Pay (SAP)-EYU | 8 (pence) plus –ve sign | Optional | Numeric | TAX/ MOA TAX1/ MOA1 | 127 |
| 127 | Additional Statutory Paternity Pay (ASPP)-EYU | 8 (pence) plus –ve sign | Optional | Numeric | TAX/ MOA TAX1/ MOA1 | 136 |
| 128 – 135 | The NI Letters and Values–EYU group consists of rules 128 to 135, 143 and 144. This group can occur up to 4 times for each employment. If there is no NI Category the group is not needed. If an NI Category is supplied all data items within the group become Mandatory, except rule 143, which has additional rules applied. | | | | | |

Message Implementation Guidelines for PAYE Earlier Year Update (2013/14)

| Validation Rule/Data Item Number | EYU14 Field Name <i>Validation Rules</i> Alpha = A-Z (upper case) a-z (lower case), Numeric = 0-9 Alphanumeric = any character within the <i>designated character sets</i> – see Appendix A | Maximum Field Length | Status | Format / Character Set | Segment / Record Name | Qualifier (incorrectly qualified segments will cause the message to be rejected) |
|----------------------------------|--|---------------------------------------|----------|------------------------|----------------------------------|---|
| 128 | NI Letter-EYU (up to 4 NI Categories can be provided for each employment) <i>Valid table letters are A, B, C, D, E, J, L, N, O, Q, R, T, W, X (Letters A-Z, but not F, G, H, I, K, M, P, S, U, V, Y Z)</i> <i>If Current Gender is male (M), NI Letter cannot contain B, E, O or T</i> <i>NI Category Letter must be unique within the NI Letters and Values group, within each employment</i> | 1 | Optional | Alpha | EMP/ EMP2 | A – Z (as listed) |
| 129 | Gross Earnings For NICs Mandatory if valid NI Category present | 11 (pence) plus –ve sign | Optional | Numeric | TAX/ MOA TAX3/ MOA3 | 172 |
| 130 | AT-LEL-EYU Mandatory if valid NI Category present <i>Must be a whole pounds figure expressed in pence, e.g. £45.00 would be expressed as 4500</i> <i>Must be zero if NI Letter-EYU is 'X'</i> | 6 (pence) plus –ve sign | Optional | Numeric | TAX/ MOA TAX3/ MOA3 | 20 |

Message Implementation Guidelines for PAYE Earlier Year Update (2013/14)

| Validation Rule/Data Item Number | EYU14 Field Name <i>Validation Rules</i> Alpha = A-Z (upper case) a-z (lower case), Numeric = 0-9 Alphanumeric = any character within the <i>designated character sets</i> – see <i>Appendix A</i> | Maximum Field Length | Status | Format / Character Set | Segment / Record Name | Qualifier (incorrectly qualified segments will cause the message to be rejected) |
|----------------------------------|---|---------------------------------------|----------|------------------------|----------------------------------|---|
| 131 | LEL-to-PT-EYU Mandatory if valid NI Category present <i>Monetary value expressed in pence,</i> <i>e.g. £45.75 would be expressed as 4575</i> <i>Must be zero if NILetter-EYU is 'X'</i> | 6 (pence) plus –ve sign | Optional | Numeric | TAX/ MOA TAX3/ MOA3 | 16 |
| 132 | PT-to-UAP-EYU Mandatory if valid NI Category present <i>Monetary value expressed in pence,</i> <i>e.g. £45.75 would be expressed as 4575</i> <i>Must be zero if NILetter-EYU is 'X'</i> | 7 (pence) plus –ve sign | Optional | Numeric | TAX/ MOA TAX3/ MOA3 | 14 |
| 133 | UAP-to-UEL-EYU Mandatory if valid NI Category present <i>Monetary value expressed in pence,</i> <i>e.g. £45.75 would be expressed as 4575</i> <i>Must be zero if NILetter-EYU is 'X'</i> | 7 (pence) plus –ve sign | Optional | Numeric | TAX/ MOA TAX3/ MOA3 | 15 |

Message Implementation Guidelines for PAYE Earlier Year Update (2013/14)

| Validation Rule/Data Item Number | EYU14 Field Name <i>Validation Rules</i> Alpha = A-Z (upper case) a-z (lower case), Numeric = 0-9 Alphanumeric = any character within the <i>designated character sets</i> – see <i>Appendix A</i> | Maximum Field Length | Status | Format / Character Set | Segment / Record Name | Qualifier (incorrectly qualified segments will cause the message to be rejected) |
|----------------------------------|---|--|----------|------------------------|----------------------------------|---|
| 134 | Total of Employer NI Contributions-EYU <i>Mandatory if valid NI Category present</i> <i>Must be zero if NILetter-EYU is 'X'</i> | 11 (pence) plus –ve sign | Optional | Numeric | TAX/ MOA TAX3/ MOA3 | 167 |
| 135 | Employees Contributions on all earnings-EYU <i>Mandatory if valid NI Category present</i> <i>Must be zero if NILetter-EYU is 'X', 'C' or 'W'.</i> | 11 (pence) plus –ve sign | Optional | Numeric | TAX/ MOA TAX3/ MOA3 | 169 |
| 143 | NIC Refund <i>Mandatory if Employees Contributions on all Earnings-EYU < 0</i> <i>Must not be present if Employees Contributions on all Earnings-EYU is > = 0</i> <i>If present must be 'Y' or 'N'</i> | 1 | Optional | Alpha | ATT/ATT5 | 234 |

Message Implementation Guidelines for PAYE Earlier Year Update (2013/14)

| Validation Rule/Data Item Number | EYU14 Field Name <i>Validation Rules</i> Alpha = A-Z (upper case) a-z (lower case), Numeric = 0-9 Alphanumeric = any character within the <i>designated character sets</i> – see <i>Appendix A</i> | Maximum Field Length | Status | Format / Character Set | Segment / Record Name | Qualifier (incorrectly qualified segments will cause the message to be rejected) |
|----------------------------------|---|----------------------|----------|------------------------|-----------------------|--|
| 144 | Scheme Contracted Out Number (SCON) <i>If present format must be:</i> <ol style="list-style-type: none"> Character 1 must be alpha - "S". Characters 2 - 8 must be numeric Character 9 must be Alpha excluding G,I,O,S,U,V,Z <i>The 9th character must pass the modulus 19 check (see Appendix B)</i> | 9 | Optional | Alphanumeric | EMP/EMP2 | A-Z (as per Rule 128) |
| 146 - 148 | The Trivial Commutation group consists of Rules 146 - 148 This group can occur up to 3 times for each employment. Each Trivial Commutation Payment Type must be unique within the group | | | | | |
| 146 | Trivial Commutation Payment Type <i>If present must be 'A', 'B' or 'C':</i> <p><i>A – Trivial Commutation lump sums (TCLS)</i></p> <p><i>B – Small pot lump sum payments from personal pension schemes</i></p> <p><i>C – Small pot lump sum payments from occupational pension schemes</i></p> | 1 | Optional | Alpha | ATT/ATT4 | A B or C |

Message Implementation Guidelines for PAYE Earlier Year Update (2013/14)

| Validation Rule/Data Item Number | EYU14 Field Name <i>Validation Rules</i> Alpha = A-Z (upper case) a-z (lower case), Numeric = 0-9 Alphanumeric = any character within the <i>designated character sets</i> – see <i>Appendix A</i> | Maximum Field Length | Status | Format / Character Set | Segment / Record Name | Qualifier (incorrectly qualified segments will cause the message to be rejected) |
|----------------------------------|--|--|----------|------------------------|----------------------------------|---|
| 147 | Payment to a Non-Individual <i>If present must be 'Y'.</i> | 1 | Optional | Alpha | ATT/ ATT3 | 228 |
| 148 | Trivial Commutation Payment Amount <i>Mandatory if Trivial Commutation Payment Type present</i> <i>Must be a whole pounds figure expressed in pence, e.g. £45.00 would be expressed as 4500</i> | 7 (pence) Plus –ve sign | Optional | Numeric | TAX/ MOA TAX2/ MOA2 | 173 |
| 160 | Employee Pension Contributions-EYU <i>Value of employee pension contributions paid under 'net pay arrangements'</i> | 11 (pence) plus –ve sign | Optional | Numeric | TAX/ MOA TAX1/ MOA1 | 175 |
| 161 | Employee Contributions Not Net-EYU <i>Value of employee pension contributions that are not paid under 'net pay arrangements'</i> | 11 (pence) plus –ve sign | Optional | Numeric | TAX/ MOA TAX1/ MOA1 | 176 |

Message Implementation Guidelines for PAYE Earlier Year Update (2013/14)

| Validation Rule/Data Item Number | EYU14 Field Name <i>Validation Rules</i> Alpha = A-Z (upper case) a-z (lower case), Numeric = 0-9 Alphanumeric = any character within the <i>designated character sets</i> – see <i>Appendix A</i> | Maximum Field Length | Status | Format / Character Set | Segment / Record Name | Qualifier (incorrectly qualified segments will cause the message to be rejected) |
|----------------------------------|--|------------------------------------|----------|------------------------|----------------------------------|---|
| 165 | Benefits Taxed Via Payroll-EYU <i>Value of benefits taxed via the payroll</i> | 11 (pence) plus –ve sign | Optional | Numeric | TAX/ MOA TAX1/ MOA1 | 174 |
| T1 | Vendor ID Mandatory for Software Developers. <i>Must be Numeric</i> <i>HMRC recommend that this should be included in all test and live submissions</i> | 4 | Optional | Numeric | ATT/ ATT1 | 49 |
| T3 | Developer's Name <i>This should be provided by the Software Developer when submitting test files.</i> <i>HMRC recommend this is included on live submissions to enable them to produce software vendor reports.</i> <i>If present must conform to Character Set B.</i> | 35 | Optional | Alphanumeric | ATT/ ATT1 | 55 |

Message Implementation Guidelines for PAYE Earlier Year Update (2013/14)

| Validation Rule/Data Item Number | EYU14 Field Name <i>Validation Rules</i> Alpha = A-Z (upper case) a-z (lower case), Numeric = 0-9 Alphanumeric = any character within the <i>designated character sets</i> – see <i>Appendix A</i> | Maximum Field Length | Status | Format / Character Set | Segment / Record Name | Qualifier (incorrectly qualified segments will cause the message to be rejected) |
|----------------------------------|--|----------------------|----------|------------------------|-----------------------|---|
| T4 | Payroll Product Name <i>This should be provided by the Software Developer when submitting test files.</i> <i>HMRC recommend this is included on live submissions to enable them to produce software vendor reports.</i> <i>If present must conform to Character Set B</i> | 35 | Optional | Alphanumeric | ATT/ ATT1 | 56 |
| T5 | Payroll Product Version <i>This should be provided by the Software Developer when submitting test files.</i> <i>HMRC recommend this is included on live submissions to enable them to produce software vendor reports.</i> <i>If present must conform to Character Set B</i> | 35 | Optional | Alphanumeric | ATT/ ATT1 | 57 |

6. RECORD LAYOUTS

6.1. GFF Layout

A GFF interchange is made up of a 4* header record followed by several fixed-length records specific to the EYU14.

These EYU14 records are made up of fixed-length fields which are delimited by a space character (not shown in table below).

Each EYU14 interchange is made up of a Header section (records BGM1 to UNS1), containing data relating to the whole interchange e.g. Employer HMRC Office and a Trailer section (records TAX1/MOA1 to CNT1) containing totals and control counts.

Each record starts with a name, e.g. NAD1A is the Header section Name and Address record, MOA2 is a Monetary Amount in the Detail section (the numbers in the record names relate to the occurrence of the record within the interchange, they do not necessarily relate to the section of the interchange).

The fixed length records vary in length, e.g. all NAD1A records are 189 characters long: all ATT1 records are 45 characters long.

The records must be terminated with either a line feed LF or a carriage return/line feed CR/LF.

The format of the data is indicated as follows:-

- a = alpha
- n = numeric
- an = alphanumeric

The length is indicated by the number following the format type:-

- a4 = alpha field 4 characters in length
- n4 = numeric field 4 characters in length
- an4 = alphanumeric field 4 characters in length

The data format within the record contents column may be shown with .. between the format type and length. This means the data length is up to the length stated.

- an..10 = alphanumeric field of up to 10 characters
- n..11 = numeric field with a maximum value of up to 11 digits

Alpha and alphanumeric data is left justified and padded with spaces.

Numeric data is right justified and padded with leading zeroes. All monetary values are provided in pence.

Message Implementation Guidelines for PAYE Earlier Year Update (2013/14)

| Record Name | Record Description | From | To | Format / Length | Record Contents | Notes |
|---|-------------------------------|------|-----|-----------------|---|---|
| | Mandatory Record | | | | | |
| 4 * | Header Identifier | 1 | 4 | an4 | Must contain **** | |
| Header | Header Version | 5 | 8 | an4 | Must contain 001A | |
| | Data Type | 9 | 16 | an8 | Must contain EYU14 | |
| | Data Type Version | 17 | 20 | an4 | Must contain 1.0 | |
| | Data Type Release | 21 | 21 | a1 | Must contain Space | |
| | Sender Identification | 22 | 56 | an35 | Must contain SENDER ID | |
| | Recipient ID | 57 | 91 | an35 | Must contain HMRC | Or as advised during the registration process - see section 7.1 |
| | Test Indicator | 92 | 92 | an1 | Must contain Space for a Live interchange or "1" for a Test interchange | |
| | Urgent Marker | 93 | 93 | a1 | Must contain Space | |
| | Transmission date | 94 | 101 | n8 | Must contain Current date - format CCYYMMDD | |
| | Transmission time | 102 | 107 | n6 | Must contain Current time - format HHMMSS | |
| | Interchange Control Reference | 108 | 121 | n14 | Must contain An incrementing count for each new 4* header | |
| | Sender Sub-Address | 122 | 135 | a14 | Must contain Spaces | |
| | Recipient Sub-Address | 136 | 149 | a14 | Must contain Spaces | |
| GFF example: ****001AEYU14 1.0 SENDER ID HMRC 2014042109354800000000000001 | | | | | | For Live transmissions |
| GFF example: ****001AEYU14 1.0 SENDER ID HMRC 1 2014042109354800000000000001 | | | | | | For Test transmissions |
| | Mandatory Record | | | | | |
| BGM1 | Beginning of Message | 1 | 5 | | Must contain BGM1 | |
| | Form type | 7 | 9 | an3 | Must contain 29 | 29 = qualifier for EYU14 |
| GFF example: BGM1 29 | | | | | | |

Message Implementation Guidelines for PAYE Earlier Year Update (2013/14)

| Record Name | Record Description | From | To | Format / Length | Record Contents | Notes |
|---|--|------|-----|-----------------|-----------------|--|
| | Optional Record | | | | | |
| NAD1A | Name and Address | 1 | 5 | | Must contain | NAD1A |
| | Party qualifier | 7 | 9 | an3 | Must contain | SD SD = qualifier for Software Developer |
| | Address Line 1 | 11 | 189 | an179 | Must contain | Spaces |
| GFF example: GFF example: NAD1A SD | | | | | | |
| | Optional Record | | | | | |
| ATT1 | Attribute of Software Developer | 1 | 5 | | Must contain | ATT1 |
| | Attribute qualifier | 7 | 9 | an3 | Must contain | 49 49 = qualifier for Vendor ID |
| | Attribute | 11 | 45 | an35 | Must contain | Vendor ID - format n..4 See Validation Rule T1 |
| GFF example: ATT1 49 0001 | | | | | | |
| | Optional Record | | | | | |
| ATT1 | Attribute of Software Developer | 1 | 5 | | Must contain | ATT1 |
| | Attribute qualifier | 7 | 9 | an3 | Must contain | 55 55 = qualifier for Developer's Name |
| | Attribute | 11 | 45 | an35 | Must contain | Developer's Name - format an..35 See Validation Rule T3 |
| GFF example: ATT1 55 SOFTWARE DEVELOPERS LIMITED | | | | | | |
| | Optional Record | | | | | |
| ATT1 | Attribute of Software Developer | 1 | 5 | | Must contain | ATT1 |
| | Attribute qualifier | 7 | 9 | an3 | Must contain | 56 56 = qualifier for Payroll Product Name |
| | Attribute | 11 | 45 | an35 | Must contain | Payroll Product Name - format an..35 See Validation Rule T4 |
| GFF example: ATT1 56 PAYROLL PRODUCT NAME | | | | | | |

Message Implementation Guidelines for PAYE Earlier Year Update (2013/14)

| Record Name | Record Description | From | To | Format / Length | Record Contents | Notes |
|--|--|------|-----|-----------------|-----------------|---|
| | Optional Record | | | | | |
| ATT1 | Attribute of Software Developer | 1 | 5 | | Must contain | ATT1 |
| | Attribute qualifier | 7 | 9 | an3 | Must contain | 57 |
| | Attribute | 11 | 45 | an35 | Must contain | Payroll Product Version - format an..35 See Validation Rule T5 |
| GFF example: ATT1 57 6.1 | | | | | | |
| | Mandatory Record | | | | | |
| NAD1A | Name and Address | 1 | 5 | | Must contain | NAD1A |
| | Party qualifier | 7 | 9 | an3 | Must contain | BG |
| | Address Line 1 | 11 | 189 | an179 | Must contain | Spaces Required to qualify following ATT record BG = qualifier for Employer |
| GFF example: NAD1A BG | | | | | | |
| | Mandatory Record | | | | | |
| NAD1B | Name and Address | 1 | 5 | | Must contain | NAD1B |
| | Party Name | 7 | 41 | an35 | Must contain | Employer Name – format an..35 |
| | Postcode | 43 | 52 | an10 | Must contain | Spaces See Validation Rule 4 |
| GFF example: NAD1B EMPLOYER NAME | | | | | | |
| | Mandatory Record | | | | | |
| ATT1 | Attribute of Employer | 1 | 5 | | Must contain | ATT1 |
| | Attribute qualifier | 7 | 9 | an3 | Must contain | 7 |
| | Attribute | 11 | 45 | an35 | Must contain | Employer PAYE Reference – format an..10 7 = qualifier for Employer PAYE Reference See Validation Rule 2 |
| GFF example: ATT1 7 AZ12345 | | | | | | |
| | Mandatory Record | | | | | |
| ATT1 | Attribute of Employer | 1 | 5 | | Must contain | ATT1 |
| | Attribute qualifier | 7 | 9 | an3 | Must contain | 103 |
| | Attribute | 11 | 45 | an35 | Must contain | Employer Accounts Office Reference Number – format an13 103 = qualifier for Employer Accounts Office Reference Number See Validation Rule 3 |
| GFF example: ATT1 103 123PQ7654321X | | | | | | |

Message Implementation Guidelines for PAYE Earlier Year Update (2013/14)

| Record Name | Record Description | From | To | Format / Length | Record Contents | Notes |
|---|---------------------------------|------|-----|-----------------|-----------------|---|
| | Optional Record | | | | | This record is Optional. It should only be provided if an ECON needs to be included in the message |
| ATT1 | Attribute of Employer | 1 | 5 | | Must contain | ATT1 |
| | Attribute qualifier | 7 | 9 | an3 | Must contain | 6 6 = qualifier for Employer Contracted Out Number (ECON) |
| | Attribute | 11 | 45 | an35 | Must contain | Employer contracted out number (ECON)–format an9 See Validation Rule 110 |
| GFF example: ATT1 6 E3101234D | | | | | | |
| | Mandatory Record | | | | | |
| NAD1A | Name and Address | 1 | 5 | | Must contain | NAD1A Required to qualify following ATT record |
| | Party qualifier | 7 | 9 | an3 | Must contain | TC TC = qualifier for HMRC Office |
| | Spaces | 11 | 189 | an179 | Must contain | Spaces |
| GFF example: NAD1A TC | | | | | | |
| | Mandatory Record | | | | | |
| ATT1 | Attribute of HMRC Office | 1 | 5 | | Must contain | ATT1 |
| | Attribute qualifier | 7 | 9 | an3 | Must contain | 17 17 = qualifier for HMRC Office Number |
| | Attribute | 11 | 45 | an35 | Must contain | HMRC Office Number, 001 to 999 See Validation Rule 1 |
| GFF example: ATT1 17 123 | | | | | | |
| | Mandatory Record | | | | | |
| DTM1 | Date and Time | 1 | 5 | | Must contain | DTM1 |
| | Date qualifier | 7 | 9 | an3 | Must contain | 243 243 = qualifier for Date of Message |
| | Date | 11 | 45 | an35 | Must contain | Date of message - format CCYYMMDD |
| | Date format qualifier | 47 | 49 | an3 | Must contain | 102 102 = qualifier for format CCYYMMDD |
| GFF example: DTM1 243 20140421 102 | | | | | | |

Message Implementation Guidelines for PAYE Earlier Year Update (2013/14)

| Record Name | Record Description | From | To | Format / Length | Record Contents | Notes |
|--|--------------------------------|------|-----|-----------------|-----------------|---|
| | Mandatory Record | | | | | |
| DTM1 | Date and Time | 1 | 5 | | Must contain | DTM1 |
| | Date qualifier | 7 | 9 | an3 | Must contain | 166 |
| | Date | 11 | 45 | an35 | Must contain | Related Tax Year –must be 2014 |
| | Date format qualifier | 47 | 49 | an3 | Must contain | 602 |
| GFF example: DTM1 166 2014 602 | | | | | | |
| | Mandatory Record | | | | | |
| UNS1 | Section Identifier | 1 | 5 | | Must contain | UNS1 |
| GFF example: UNS1 | | | | | | |
| | Mandatory Record | | | | | |
| LIN1 | Line Item | 1 | 5 | | Must contain | LIN1 |
| | Employee number within message | 7 | 12 | n6 | Must contain | Employee number within this message – format n..6 |
| GFF example: LIN1 000001 | | | | | | |
| | Mandatory Record | | | | | |
| NAD2A | Name and Address | 1 | 5 | | Must contain | NAD2A |
| | Party qualifier | 7 | 9 | an3 | Must contain | BV |
| | Address Line 1 | 11 | 45 | an35 | Must contain | Address Line 1 - format an..35 or spaces |
| | Address Line 2 | 47 | 81 | an35 | Must contain | Address Line 2 - format an..35 or spaces |
| | Address Line 3 | 83 | 117 | an35 | Must contain | Address Line 3 - format an..35 or spaces |
| | Address Line 4 | 119 | 153 | an35 | Must contain | Address Line 4 - format an..35 or spaces |
| | Address Line 5 | 155 | 189 | an35 | Must contain | Foreign Country - format an..35 or spaces |
| GFF example: NAD2A BV 1 CARDBOARD LANE TELFORD SHROPSHIRE | | | | | | |

Message Implementation Guidelines for PAYE Earlier Year Update (2013/14)

| Record Name | Record Description | From | To | Format / Length | Record Contents | Notes |
|--|------------------------------|------|-----|-----------------|-----------------|--|
| | Mandatory Record | | | | | |
| NAD2B | Name and Address | 1 | 5 | | Must contain | NAD2B |
| | Surname | 7 | 41 | an35 | Must contain | Surname or Family Name – format an..35 See Validation Rule 6 |
| | First Forename | 43 | 77 | an35 | Must contain | Forename or Given Name or spaces – format an..35 See Validation Rule 7 |
| | Second Forename | 79 | 113 | an35 | Must contain | Second Forename or Given Name or spaces – format an..35 See Validation Rule 9 |
| | Title | 115 | 149 | an35 | Must contain | Title or spaces – format an..35 See Validation Rule 5A |
| | Honours | 151 | 185 | an35 | Must contain | Spaces |
| | Postcode | 187 | 196 | an10 | Must contain | UK Postcode or spaces – format an..10 See Validation Rule 17 |
| GFF example: NAD2B THYME JUSTIN EDWARD MR TL9 9ZZ | | | | | | |
| | Optional Record | | | | | |
| ATT2 | Attribute of Employee | 1 | 5 | | Must contain | ATT2 |
| | Attribute qualifier | 7 | 9 | an3 | Must contain | 11 11 = qualifier for NINO |
| | Attribute | 11 | 45 | an35 | Must contain | National Insurance Number (NINO) - format an..9 See Validation Rule 5 |
| GFF example: ATT2 11 AB123456C | | | | | | |
| | Mandatory Record | | | | | |
| ATT2 | Attribute of Employee | 1 | 5 | | Must contain | ATT2 |
| | Attribute qualifier | 7 | 9 | an3 | Must contain | 9 9 = qualifier for Current Gender Indicator |
| | Attribute | 11 | 45 | an35 | Must contain | Current Gender indicator, M = Male or F = Female See Validation Rule 11 |
| GFF example: ATT2 9 M | | | | | | |
| | Optional Record | | | | | |
| ATT2 | Attribute of Employee | 1 | 5 | | Must contain | ATT2 |
| | Attribute qualifier | 7 | 9 | an3 | Must contain | 201 201 = qualifier for Passport Number |
| | Attribute | 11 | 45 | an35 | Must contain | Passport Number – format an..35 See Validation Rule 12 |
| GFF example: ATT2 201 123456789ABC | | | | | | |

Message Implementation Guidelines for PAYE Earlier Year Update (2013/14)

| Record Name | Record Description | From | To | Format / Length | Record Contents | Notes |
|--|--------------------------------------|------|-----|-----------------|-----------------|--|
| | Optional Record | | | | | |
| DTM2 | Date and time | 1 | 5 | | Must contain | DTM2 |
| | Date Qualifier | 7 | 9 | an3 | Must contain | 329 329 = qualifier for Date of Birth |
| | Date | 11 | 45 | an35 | Must contain | Date of Birth – format CCYYMMDD See Validation Rule 10 |
| | Date format qualifier | 47 | 49 | an3 | Must contain | 102 102 = qualifier for format CCYYMMDD |
| GFF example: DTM2 329 19751025 102 | | | | | | |
| | Optional Record | | | | | |
| NAD2C | Name and Address | 1 | 5 | | Must contain | NAD2C |
| | Party qualifier | 7 | 9 | an3 | Must contain | EP EP = qualifier for Employee Partner |
| | Surname | 11 | 45 | an35 | Must contain | Surname or Family Name– format an..35 See Validation Rule 74 |
| | First Forename | 47 | 81 | an35 | Must contain | Forename or Given Name or spaces – format an..35 See Validation Rule 75 |
| | Second Forename | 83 | 117 | an35 | Must contain | Second Forename or Given Name or spaces – format an..35 See Validation Rule 77 |
| | | 119 | 153 | an35 | Must contain | Spaces |
| | | 155 | 189 | an35 | Must contain | Spaces |
| GFF example: NAD2C EP THYME JUSTIN EDWARD | | | | | | |
| | Optional Record | | | | | |
| ATT2 | Attribute of Employee Partner | 1 | 5 | | Must contain | ATT2 |
| | Attribute qualifier | 7 | 9 | an3 | Must contain | 217 217 = qualifier for Partner National Insurance Number |
| | Attribute | 11 | 45 | an35 | Must contain | Partner National Insurance Number – format an..9 See Validation Rule 78 |
| GFF example: ATT2 217 AB234567C | | | | | | |

Message Implementation Guidelines for PAYE Earlier Year Update (2013/14)

| Record Name | Record Description | From | To | Format / Length | Record Contents | Notes |
|---|------------------------------|------|----|-----------------|--|---|
| <p>The following EMP1 group of records relates to the Employment Details and can be iterated up to a maximum of 15 times for each employee.</p> <p>Each entry must contain one EMP1 group. The NI Category group, which forms part of this group, may repeat for up to 4 NI Categories for each employment.</p> | | | | | | |
| | Mandatory Record | | | | | |
| EMP1 | Employment Details | 1 | 5 | | Must contain EMP1 | Required to qualify the following employment details |
| | Employment Details qualifier | 7 | 9 | an3 | Must contain ED | ED = qualifier for employment details |
| | Spare | 11 | 45 | an35 | Must contain Spaces | |
| | Spare | 47 | 81 | an35 | Must contain Spaces | |
| GFF example: EMP1 ED | | | | | | |
| | Optional Record | | | | | |
| DTM3 | Date and Time | 1 | 5 | | Must contain DTM3 | |
| | Date qualifier | 7 | 9 | an3 | Must contain 330 | 330 = qualifier for Starting Date |
| | Date | 11 | 45 | an35 | Must contain Starting Date - format CCYYMMDD | See Validation Rule 24 |
| | Date format qualifier | 47 | 49 | an3 | Must contain 102 | 102 = qualifier for format CCYYMMDD |
| GFF example: DTM3 330 20140114 102 | | | | | | |
| | Optional Record | | | | | |
| DTM3 | Date and Time | 1 | 5 | | Must contain DTM3 | |
| | Date qualifier | 7 | 9 | an3 | Must contain 337 | 337 = qualifier for Date of Leaving |
| | Date | 11 | 45 | an35 | Must contain Date of Leaving - format CCYYMMDD | See Validation Rule 41 |
| | Date | 47 | 49 | an3 | Must contain 102 | 102 = qualifier for Date of Leaving format CCYYMMDD |
| GFF example: DTM3 337 20140122 102 | | | | | | |

Message Implementation Guidelines for PAYE Earlier Year Update (2013/14)

| Record Name | Record Description | From | To | Format / Length | Record Contents | Notes |
|--|------------------------------|------|----|-----------------|-----------------|---|
| | Optional Record | | | | | |
| ATT3 | Attribute of Employee | 1 | 5 | | Must contain | ATT3 |
| | Attribute qualifier | 7 | 9 | an3 | Must contain | 5 5 = qualifier for Starting Declaration |
| | Attribute | 11 | 45 | an35 | Must contain | Starting Declaration – format A, B or C See Validation Rule 24A |
| GFF example: ATT3 5 A | | | | | | |
| | Optional Record | | | | | |
| ATT3 | Attribute of Employee | 1 | 5 | | Must contain | ATT3 |
| | Attribute qualifier | 7 | 9 | an3 | Must contain | 21 21 = qualifier for Has Student Loan |
| | Attribute | 11 | 45 | an35 | Must contain | Has Student Loan – format Y See Validation Rule 27 |
| GFF example: ATT3 21 Y | | | | | | |
| NB – If present only one of Intend to Stay 183 days or more, Intend to Stay less than 183 days or Intend to work both in and out of the UK indicators can be included | | | | | | |
| | Optional Record | | | | | |
| ATT3 | Attribute of Employee | 1 | 5 | | Must contain | ATT3 |
| | Attribute qualifier | 7 | 9 | an3 | Must contain | 202 202 = qualifier for Intend to Stay 183 days or more indicator |
| | Attribute | 11 | 45 | an35 | Must contain | Intend to Stay 183 days or more – format Y See Validation Rule 28 |
| GFF example: ATT3 202 Y | | | | | | |
| | Optional Record | | | | | |
| ATT3 | Attribute of Employee | 1 | 5 | | Must contain | ATT3 |
| | Attribute qualifier | 7 | 9 | an3 | Must contain | 203 203 = qualifier for Intend to Stay less than 183 days indicator |
| | Attribute | 11 | 45 | an35 | Must contain | Intend to Stay less than 183 days – format Y See Validation Rule 29 |
| GFF example: ATT3 203 Y | | | | | | |

Message Implementation Guidelines for PAYE Earlier Year Update (2013/14)

| Record Name | Record Description | From | To | Format / Length | Record Contents | Notes |
|-----------------------------------|------------------------------|------|----|-----------------|--|--|
| | Optional Record | | | | | |
| ATT3 | Attribute of Employee | 1 | 5 | | Must contain ATT3 | |
| | Attribute qualifier | 7 | 9 | an3 | Must contain 204 | 204 = qualifier for Intend to work both in and out of the UK indicator |
| | Attribute | 11 | 45 | an35 | Must contain Intend to work both in and out of the UK – format Y | See Validation Rule 30 |
| GFF example: ATT3 204 Y | | | | | | |
| | Optional Record | | | | | |
| ATT3 | Attribute of Employee | 1 | 5 | | Must contain ATT3 | |
| | Attribute qualifier | 7 | 9 | an3 | Must contain 60 | 60 = qualifier for EEA Citizen |
| | Attribute | 11 | 45 | an35 | Must contain EEA Citizen – format Y | See Validation Rule 31 |
| GFF example: ATT3 60 Y | | | | | | |
| | Optional Record | | | | | |
| ATT3 | Attribute of Employee | 1 | 5 | | Must contain ATT3 | |
| | Attribute qualifier | 7 | 9 | an3 | Must contain 61 | 61 = qualifier for EPM6 scheme |
| | Attribute | 11 | 45 | an35 | Must contain EPM6 scheme – format Y | See Validation Rule 31A |
| GFF example: ATT3 61 Y | | | | | | |
| | Optional Record | | | | | |
| ATT3 | Attribute of Employee | 1 | 5 | | Must contain ATT3 | |
| | Attribute qualifier | 7 | 9 | an3 | Must contain 19 | 19 = qualifier for Payroll ID |
| | Attribute | 11 | 45 | an35 | Must contain Payroll ID – format an..35 – format Y | See Validation Rule 38 |
| GFF example: ATT2 19 14755 | | | | | | |

Message Implementation Guidelines for PAYE Earlier Year Update (2013/14)

| Record Name | Record Description | From | To | Format / Length | Record Contents | Notes |
|---|---|------|----|-----------------|-----------------|---|
| | Optional Record | | | | | |
| ATT5 | Attribute of Employee | 1 | 5 | | Must contain | ATT5 |
| | Attribute qualifier | 7 | 9 | an3 | Must contain | 234 |
| | Attribute | 11 | 45 | an35 | Must contain | NIC Refund Indicator – format Y or N |
| GFF example: ATT5 234 Y | | | | | | |
| Further Employee Contribution NI Letters and Values records can be repeated here up to a maximum of 4 iterations | | | | | | |
| | Mandatory Record | | | | | |
| ALC1 | Attribute of Employee | 1 | 5 | | Must contain | ALC1 |
| | Attribute qualifier | 7 | 9 | an3 | Must contain | 4 |
| | Attribute | 11 | 45 | an35 | Must contain | Tax Code – format an..7 |
| GFF example: ALC1 4 500L | | | | | | |
| | Optional Record | | | | | This record is Optional. It should only be provided if SVR comes into force. |
| ATT6 | Attribute of Allowance or Charge | 1 | 5 | | Must contain | ATT6 |
| | Attribute qualifier | 7 | 9 | an3 | Must contain | 1 |
| | Attribute | 11 | 45 | an35 | Must contain | SVR Indicator – format Y |
| GFF example: ATT6 1 Y | | | | | | |
| | Optional Record | | | | | |
| ATT6 | Attribute of Allowance or Charge | 1 | 5 | | Must contain | ATT6 |
| | Attribute qualifier | 7 | 9 | an3 | Must contain | 2 |
| | Attribute | 11 | 45 | an35 | Must contain | Week 1 / Month 1 Indicator – format Y |
| GFF example: ATT6 2 Y | | | | | | |
| Further employment details may be included here up to a maximum of 15 iterations | | | | | | |

Message Implementation Guidelines for PAYE Earlier Year Update (2013/14)

| Record Name | Record Description | From | To | Format / Length | Record Contents | Notes |
|---|--|------|----|-----------------|-----------------|---|
| Further employee details (LIN1 Groups) may be included here | | | | | | |
| | Mandatory Record | | | | | |
| UNS2 | Section Identifier | 1 | 5 | | Must contain | UNS2 |
| GFF example: UNS2 | | | | | | |
| | Mandatory Record | | | | | |
| CNT1 | Control - Number of Lin through ALC records | 1 | 5 | | Must contain | CNT1 |
| | Total number of details | 7 | 24 | n18 | Must contain | Number of LIN1 through ATT6 records (same as Number of Employees) - format n..8 |
| GFF example: CNT1 000000000000000001 | | | | | | |

6.1.1. GFF : EYU14 Example

An example of an EYU14 GFF message can be found on the HMRC Website at:

<http://www.hmrc.gov.uk/softwaredevelopers/rti/edi-rti.htm>

6.2. EDIFACT Layout

An EDIFACT message is made up of segments of data.

The segments used in the EYU14 message are shown below.

Each segment is made up of Composite elements and Stand-alone elements. Generally, Composite element names begin with a "C" for Composite, e.g. C002 in the BGM segment below. Composite elements within Service segments (UNB, UNH, UNT, UNZ) are different - their names begin with an "S" for Service, e.g. S001 in the UNB segment below.

Composite elements are made up of several Simple elements, each of which has its own identifying number, e.g. 1001 in the C002 Composite element in the BGM segment below.

Stand-alone elements are just like Simple elements, except that they are not part of a Composite element, e.g. 3035 in the NAD segment below.

Composite and Stand-alone elements are shown in BOLD below. Simple elements are shown in Normal font.

EDIFACT element contents with fixed values are shown in BOLD below.

Contents with variable values are shown in Normal font.

The information above is important because it defines how the EDIFACT data is constructed.

EDIFACT uses special characters (+ : ? and ') to identify the position of data in the segment and consequently the meaning of the data.

' is the segment terminator, + is the segment tag and Composite/Stand-alone element separator, : is the Simple element separator and ? is the release character.

The release character ? immediately preceding one of the characters ' + : ? restores their normal meaning, e.g. O?'CONNOR means O'CONNOR.

The use of the other special characters is explained further below.

Each segment starts with a segment tag or name, e.g. ATT is the segment tag for the Attribute segment.

A plus sign + always follows the segment name. Therefore, ATT+ means this is an Attribute segment.

The Attribute segment carries data which is an attribute of the Employer or Employee as named in the preceding NAD segment.

The layout below shows that the Employer has a single attribute – Employer reference number, but the Employee has many attributes.

The first element of data follows the first plus sign +.

The ATT segment layout below shows that the first element is a Stand-alone element, (it does not start with an S or C), numbered 9017. The data carried in 9017 is the attribute function qualifier which in the EYU14 message is ZZZ.

Message Implementation Guidelines for PAYE Earlier Year Update (2013/14)

ATT+ZZZ means this is an Attribute segment with an element Attribute Function Qualifier of ZZZ.

The plus sign + also marks the end of a Composite or Stand-alone element (except at the end of a segment – see later), giving ATT+ZZZ+

The next element in the ATT segment is a Composite element - C955 Attribute Type. This element is not used in the EYU14 message, so to signify this, the plus sign is used to show the start of the next element giving ATT+ZZZ++

The next element in the ATT segment is a Composite element - C956 Attribute Details. This element is a Composite element containing 4 Simple elements - 9019 Attribute coded, 1131 Code list qualifier, 3055 Code list agency and 9018 Attribute. Data is present in each of these 4 Simple elements.

A colon : is used to separate each Simple element within a Composite element, e.g. ATT+ZZZ++7:2:IR:1234567

As there are no more elements in this segment the + is not used to show the end of this element.

Instead the apostrophe or segment terminator ' is used to signify the end of the segment, thus giving the complete segment as ATT+ZZZ++7:2:IR:1234567'

The data content sent in each segment and an example of how the EDIFACT segment will look is given in the following table.

The format of the data is indicated as follows:-

- a = alpha
- n = numeric
- an = alphanumeric

The length is indicated by the number following the format type:-

- a4 = alpha field 4 characters in length
- n4 = numeric field 4 characters in length
- an4 = alphanumeric field 4 characters in length

The data format within the record contents may be shown with .. between the format type and length. This means the data length is up to the length stated.

- an..10 = alphanumeric field of up to 10 characters
- n..11 = numeric field with a maximum value of up to 11 digits

All monetary values are provided in pence.

Negative values are indicated by including a “-” in the left-most position of the field.

For example, in a field with format n..9

123456789 represents £1234567.89

-123456789 represents -£1234567.89

Message Implementation Guidelines for PAYE Earlier Year Update (2013/14)

For EYU monetary values enter the difference, expressed in pence, between the Year to Date figure originally submitted on the employee's final FPS for the year and what the figure should be. For example:

- enter 50000 - if you recorded £500.00 too **little** pay on the employee's payroll record
- enter -20000 - if you recorded £200.00 too **much** pay on the employee's payroll record.

Message Implementation Guidelines for PAYE Earlier Year Update (2013/14)

| Segment Name | EDIFACT Element Name | Segment Content | Contents | | Notes |
|------------------------------|----------------------|-----------------|-------------------|---|--|
| UNA – Service String segment | | | Mandatory Segment | Must contain the characters as per the example line | Defines separator characters to be used in the interchange |
| EDIFACT example: UNA:+.? ' | | | | | |

Message Implementation Guidelines for PAYE Earlier Year Update (2013/14)

| Segment Name | EDIFACT Element Name | Segment Content | Contents | | Notes |
|--|----------------------|--------------------------------------|-------------------|---|---|
| UNB – Interchange Header | | | Mandatory Segment | | |
| | S001 | SYNTAX IDENTIFIER | | | |
| | 0001 | Syntax Identifier | Must contain | UNOC | |
| | 0002 | Syntax Version Number | Must contain | 3 | |
| | S002 | INTERCHANGE SENDER | | | |
| | 0004 | Sender Identification | Must contain | SENDER ID – format an..35 | |
| | S003 | INTERCHANGE RECIPIENT | | | |
| | 0010 | Recipient Identification | Must contain | HMRC RECEIVER ID | As advised during the Registration Process – See Section 7.1 |
| | S004 | DATE/TIME OF PREPARATION | | | |
| | 0017 | Date | Must contain | Current Date – format YYMMDD | |
| | 0019 | Time | Must contain | Current Time – format HHMM | |
| | 0020 | INTERCHANGE CONTROL REFERENCE | Must contain | An incrementing count for each new UNB – format an..14 | |
| | S005 | RECIPIENT REF, PASSWORD | If used | | |
| | 0022 | Recipient's Reference/Password | Must contain | SENDER PASSWORD – format an..14 | |
| | 0026 | APPLICATION REFERENCE | May contain | EYU14 | |
| | 0029 | PROCESSING PRIORITY CODE | Not Used | | |
| | 0031 | ACKNOWLEDGEMENT REQUEST | Not Used | | |
| | 0032 | COMMS AGREEMENT ID | Not Used | | |
| | 0035 | TEST INDICATOR | May contain | Must not be present for Live interchanges or must contain '1' for Test interchanges | |
| EDIFACT example: UNB+UNOC:3+SENDERID+HMRC+140421:0935+2++EYU14' For Live transmissions | | | | | |
| EDIFACT example: UNB+UNOC:3+SENDERID+HMRC+140421:0935+2++EYU14++++1' For Test transmissions | | | | | |

Message Implementation Guidelines for PAYE Earlier Year Update (2013/14)

| Segment Name | EDIFACT Element Name | Segment Content | Contents | | Notes |
|---|----------------------|---------------------------------|-------------------|--|--------------------------|
| UNH - Message Header | | | Mandatory Segment | | |
| | 0062 | MESSAGE REFERENCE NUMBER | Must contain | An incrementing count for each new UNH - format an..14 | |
| | S009 | MESSAGE IDENTIFICATION | | | |
| | 0065 | Message Type | Must contain | EYU14 | |
| | 0052 | Message version number | Must contain | 1 | |
| | 0054 | Message release number | Must contain | 0 | |
| | 0051 | Controlling agency | Must contain | IR | |
| EDIFACT example: UNH+1+EYU14:1:0:IR' | | | | | |
| BGM – Beginning of Message | | | Mandatory Segment | | |
| | C002 | DOCUMENT/MESSAGE NAME | | | |
| | 1001 | Document name, coded | Must contain | 29 | 29 = qualifier for EYU14 |
| | 1131 | Code list qualifier | Must contain | 5 | |
| | 3055 | Code list agency | Must contain | IR | |
| EDIFACT example: BGM+29:5:IR' | | | | | |

Message Implementation Guidelines for PAYE Earlier Year Update (2013/14)

| Segment Name | EDIFACT Element Name | Segment Content | Contents | | Notes |
|--|----------------------|--|------------------|-------------------------|---|
| NAD – Name and Address | | | Optional Segment | | This record is Optional. It should only be provided by Software Developers |
| | 3035 | PARTY QUALIFIER | Must contain | SD | SD = qualifier for Software Developer |
| | C082 | PARTY IDENTIFICATION DETAILS | Not used | | |
| | C058 | NAME AND ADDRESS | Not used | | |
| | C080 | PARTY NAME | Not used | | |
| | C059 | STREET | Not used | | |
| | 3164 | CITY NAME | Not used | | |
| | 3229 | COUNTRY SUB-ENTITY IDENTIFICATION | Not used | | |
| | 3251 | POSTCODE IDENTIFICATION | Not used | | |
| EDIFACT example: NAD+SD' | | | | | |
| ATT – Attribute of Software Developer | | | Optional Segment | | This record is Optional. It should only be provided by Software Developers |
| | 9017 | ATTRIBUTE FUNCTION QUALIFIER | Must contain | ZZZ | ZZZ = qualifier for Mutually defined |
| | C955 | ATTRIBUTE TYPE | Not used | | |
| | C956 | ATTRIBUTE DETAILS | | | |
| | 9019 | Attribute, coded | Must contain | 49 | 49 = qualifier for Vendor ID |
| | 1131 | Code list qualifier | Must contain | 2 | |
| | 3055 | Code list agency | Must contain | IR | |
| | 9018 | Attribute | Must contain | Vendor ID - format n..4 | See Validation Rule T1 |
| EDIFACT example: ATT+ZZZ++49:2:IR:0001' | | | | | |

Message Implementation Guidelines for PAYE Earlier Year Update (2013/14)

| Segment Name | EDIFACT Element Name | Segment Content | Contents | | Notes |
|---|----------------------|------------------------------|------------------|--------------------------------------|---|
| ATT – Attribute of Software Developer | | | Optional Segment | | This record is Optional. |
| | 9017 | ATTRIBUTE FUNCTION QUALIFIER | Must contain | ZZZ | ZZZ = qualifier for Mutually defined |
| | C955 | ATTRIBUTE TYPE | Not used | | |
| | C956 | ATTRIBUTE DETAILS | | | |
| | 9019 | Attribute, coded | Must contain | 55 | 55 = qualifier for Developer's Name |
| | 1131 | Code list qualifier | Must contain | 2 | |
| | 3055 | Code list agency | Must contain | IR | |
| | 9018 | Attribute | Must contain | Developer's Name - format an..35 | See Validation Rule T3 |
| EDIFACT example: ATT+ZZZ++55:2:IR:SOFTWARE DEVELOPERS LIMITED' | | | | | |
| ATT – Attribute of Software Developer | | | Optional Segment | | This record is Optional. |
| | 9017 | ATTRIBUTE FUNCTION QUALIFIER | Must contain | ZZZ | ZZZ = qualifier for Mutually defined |
| | C955 | ATTRIBUTE TYPE | Not used | | |
| | C956 | ATTRIBUTE DETAILS | | | |
| | 9019 | Attribute, coded | Must contain | 56 | 56 = qualifier for Payroll Product Name |
| | 1131 | Code list qualifier | Must contain | 2 | |
| | 3055 | Code list agency | Must contain | IR | |
| | 9018 | Attribute | Must contain | Payroll Product Name - format an..35 | See Validation Rule T4 |
| EDIFACT example: ATT+ZZZ++56:2:IR:PAYROLL PRODUCT NAME' | | | | | |

Message Implementation Guidelines for PAYE Earlier Year Update (2013/14)

| Segment Name | EDIFACT Element Name | Segment Content | Contents | | Notes |
|---------------------------------------|---|-----------------------------------|-------------------|---|---|
| ATT – Attribute of Software developer | | | Optional Segment | | This record is Optional. |
| | 9017 | ATTRIBUTE FUNCTION QUALIFIER | Must contain | ZZZ | ZZZ = qualifier for Mutually defined |
| | C955 | ATTRIBUTE TYPE | Not used | | |
| | C956 | ATTRIBUTE DETAILS | | | |
| | 9019 | Attribute, coded | Must contain | 57 | 57 = qualifier for Payroll Product Version |
| | 1131 | Code list qualifier | Must contain | 2 | |
| | 3055 | Code list agency | Must contain | IR | |
| | 9018 | Attribute | Must contain | Payroll Product Version - format an..35 | See Validation Rule T5 |
| | EDIFACT example: ATT+ZZZ++57:2:IR:6.1' | | | | |
| NAD – Name and Address | | | Mandatory Segment | | Required to qualify following ATT segments |
| | 3035 | PARTY QUALIFIER | Must contain | BG | BG = qualifier for Employer |
| | C082 | PARTY IDENTIFICATION DETAILS | Not used | | |
| | C058 | NAME AND ADDRESS | Not used | | |
| | C080 | PARTY NAME | | | |
| | 3036 | Party name | Must contain | Employer Name – format an..35 | See Validation Rule 4 |
| | C059 | STREET | Not used | | |
| | 3164 | CITY NAME | Not used | | |
| | 3229 | COUNTRY SUB-ENTITY IDENTIFICATION | Not used | | |
| | 3251 | POSTCODE IDENTIFICATION | Not used | | |
| | EDIFACT example: NAD+BG+++EMPLOYER NAME' | | | | |

Message Implementation Guidelines for PAYE Earlier Year Update (2013/14)

| Segment Name | EDIFACT Element Name | Segment Content | Contents | | Notes |
|---|----------------------|-------------------------------------|-------------------|---|---|
| ATT – Attribute of Employer | | | Mandatory Segment | | |
| | 9017 | ATTRIBUTE FUNCTION QUALIFIER | Must contain | ZZZ | ZZZ = qualifier for Mutually defined |
| | C955 | ATTRIBUTE TYPE | Not used | | |
| | C956 | ATTRIBUTE DETAILS | | | |
| | 9019 | Attribute, coded | Must contain | 7 | 7 = qualifier for Employer PAYE Reference |
| | 1131 | Code list qualifier | Must contain | 2 | |
| | 3055 | Code list agency | Must contain | IR | |
| | 9018 | Attribute | Must contain | Employer PAYE Reference - format an..10 | See Validation Rule 2 |
| EDIFACT example: ATT+ZZZ++7:2:IR:AZ12345' | | | | | |
| ATT – Attribute of Employer | | | Mandatory Segment | | |
| | 9017 | ATTRIBUTE FUNCTION QUALIFIER | Must contain | ZZZ | ZZZ = qualifier for Mutually defined |
| ATT – Attribute of Employer | C955 | ATTRIBUTE TYPE | Not used | | |
| | C956 | ATTRIBUTE DETAILS | | | |
| | 9019 | Attribute, coded | Must contain | 103 | 103 = qualifier for Employer Accounts Office Reference Number |
| | 1131 | Code list qualifier | Must contain | 2 | |
| | 3055 | Code list agency | Must contain | IR | |
| | 9018 | Attribute | Must contain | Employer Accounts Office Reference Number - format an13 | See Validation Rule 3 |
| EDIFACT example: ATT+ZZZ++103:2:IR:123PQ7654321X | | | | | |

Message Implementation Guidelines for PAYE Earlier Year Update (2013/14)

| Segment Name | EDIFACT Element Name | Segment Content | Contents | | Notes |
|--|----------------------|-------------------------------------|-------------------|-------------------|---|
| ATT – Attribute of Employer | | | Optional Segment | | This record is Optional. It should only be provided if an ECON needs to be included in the message |
| | 9017 | ATTRIBUTE FUNCTION QUALIFIER | Must contain | ZZZ | ZZZ = qualifier for Mutually defined |
| | C955 | ATTRIBUTE TYPE | Not used | | |
| | C956 | ATTRIBUTE DETAILS | | | |
| | 9019 | Attribute, coded | Must contain | 6 | 6 = qualifier for Employer Contracted Out Number (ECON) |
| | 1131 | Code list qualifier | Must contain | 2 | |
| | 3055 | Code list agency | Must contain | IR | |
| | 9018 | Attribute | Must contain | ECON - format an9 | See Validation Rule 110 |
| EDIFACT example: ATT+ZZZ++6:2:IR:E3101234D' | | | | | |
| NAD – Name and Address | | | Mandatory Segment | | Required to qualify the following ATT segment |
| | 3035 | PARTY QUALIFIER | Must contain | TC | TC = qualifier for HMRC Office |
| | C082 | PARTY IDENTIFICATION DETAILS | Not used | | |
| | C058 | NAME AND ADDRESS | Not used | | |
| | C080 | PARTY NAME | Not used | | |
| EDIFACT example: NAD+TC' | | | | | |

Message Implementation Guidelines for PAYE Earlier Year Update (2013/14)

| Segment Name | EDIFACT Element Name | Segment Content | Contents | | Notes |
|--|----------------------|------------------------------|-------------------|--|---------------------------------------|
| ATT – Attribute of HM Revenue & Customs Office | | | Mandatory Segment | | |
| | 9017 | ATTRIBUTE FUNCTION QUALIFIER | Must contain | ZZZ | ZZZ = qualifier for Mutually defined |
| | C955 | ATTRIBUTE TYPE | Not used | | |
| | C956 | ATTRIBUTE DETAILS | | | |
| | 9019 | Attribute, coded | Must contain | 17 | 17 = qualifier for HMRC Office Number |
| | 1131 | Code list qualifier | Must contain | 2 | |
| | 3055 | Code list agency | Must contain | IR | |
| | 9018 | Attribute | Must contain | HMRC Office Number, 001 to 999 – format n3 | See Validation Rule 1 |
| EDIFACT example: ATT+ZZZ++17:2:IR:123' | | | | | |
| DTM – Date and Time | | | Mandatory Segment | | |
| | C507 | DATE/TIME/PERIOD | | | |
| | 2005 | Date period qualifier | Must contain | 243 | 243 = qualifier for Date of Message |
| | 2380 | Date period | Must contain | Date of Message - format CCYYMMDD | |
| | 2379 | Date period format qualifier | Must contain | 102 | 102 = qualifier for format CCYYMMDD |
| EDIFACT example: DTM+243:20140421:102' | | | | | |
| DTM – Date and Time | | | Mandatory Segment | | |
| | C507 | DATE/TIME/PERIOD | | | |
| | 2005 | Date period qualifier | Must contain | 166 | 166 = qualifier for Related Tax Year |
| | 2380 | Date period | Must contain | Related Tax Year – must be 2013 | See Validation Rule 18A |
| | 2379 | Date period format qualifier | Must contain | 602 | 602 = qualifier for format CCYY |
| EDIFACT example: DTM+166:2014:602' | | | | | |

Message Implementation Guidelines for PAYE Earlier Year Update (2013/14)

| Segment Name | EDIFACT Element Name | Segment Content | Contents | | Notes |
|---------------------------------|----------------------|-------------------------|-------------------|---|--------------------------|
| UNS – Section Identifier | | | Mandatory Segment | | |
| | 0081 | Section Identifier | Must contain | D | D = qualifier for Detail |
| EDIFACT example: UNS+D' | | | | | |
| LIN – Line Item | | | Mandatory Segment | | |
| | 1082 | LINE ITEM NUMBER | Must contain | Employee Number within this message - format n..6 | |
| EDIFACT example: LIN+1' | | | | | |

Message Implementation Guidelines for PAYE Earlier Year Update (2013/14)

| Segment Name | EDIFACT Element Name | Segment Content | Contents | | Notes |
|--|----------------------|--|-------------------|---|-----------------------------|
| NAD – Name and Address | | | Mandatory Segment | | |
| | 3035 | PARTY QUALIFIER | Must contain | BV | BV = qualifier for Employee |
| | C082 | PARTY IDENTIFICATION DETAILS | Not used | | |
| | C058 | NAME AND ADDRESS | | | |
| | 3124 | Name and address line | May contain | Address Line 1 – format an..35 | See Validation Rule 13 |
| | 3124 | Name and address line | May contain | Address Line 2 – format an..35 | See Validation Rule 14 |
| | 3124 | Name and address line | May contain | Address Line 3 – format an..35 | See Validation Rule 15 |
| | 3124 | Name and address line | May contain | Address Line 4 – format an..35 | See Validation Rule 16 |
| | 3124 | Name and address line | May contain | Foreign Country – format an..35 | See Validation Rule 18 |
| | C080 | PARTY NAME | | | |
| | 3036 | Party name | Must contain | Surname or Family Name – format an..35 | See Validation Rule 6 |
| | 3036 | Party name | Must contain | Forename or Given Name – format an..35 | See Validation Rule 7 |
| | 3036 | Party name | May contain | Second Forename or Given Name – format an..35 | See Validation Rule 9 |
| | 3036 | Party name | May contain | Title – format an..35 | See Validation Rule 5A |
| | C059 | STREET | Not used | | |
| | 3164 | CITY NAME | Not used | | |
| | 3229 | COUNTRY SUB-ENTITY IDENTIFICATION | Not used | | |
| | 3251 | POSTCODE IDENTIFICATION | May contain | UK Postcode – format an..10 | See Validation Rule 17 |
| EDIFACT example: NAD+BV++1 CARDBOARD LANE:TELFORD:SHROPSHIRE+THYME:JUSTIN:EDWARD:MR++++TL9 9ZZ' | | | | | |

Message Implementation Guidelines for PAYE Earlier Year Update (2013/14)

| Segment Name | EDIFACT Element Name | Segment Content | Contents | | Notes |
|---|----------------------|-------------------------------------|-------------------|---|--------------------------------------|
| ATT – Attribute of Employee | | | Optional Segment | | |
| | 9017 | ATTRIBUTE FUNCTION QUALIFIER | Must contain | ZZZ | ZZZ = qualifier for Mutually defined |
| | C955 | ATTRIBUTE TYPE | Not used | | |
| | C956 | ATTRIBUTE DETAILS | | | |
| | 9019 | Attribute, coded | Must contain | 11 | 11 = qualifier for NINO |
| | 1131 | Code list qualifier | Must contain | 2 | |
| | 3055 | Code list agency | Must contain | IR | |
| | 9018 | Attribute | Must contain | National Insurance Number (NINO) – format an..9 | See Validation Rule 5 |
| EDIFACT example: ATT+ZZZ++11:2:IR:AB123456C' | | | | | |
| ATT – Attribute of Employee | | | Mandatory Segment | | |
| | 9017 | ATTRIBUTE FUNCTION QUALIFIER | Must contain | ZZZ | ZZZ = qualifier for Mutually defined |
| | C955 | ATTRIBUTE TYPE | Not used | | |
| | C956 | ATTRIBUTE DETAILS | | | |
| | 9019 | Attribute, coded | Must contain | 9 | 9 = qualifier for Current Gender |
| | 1131 | Code list qualifier | Must contain | 2 | |
| | 3055 | Code list agency | Must contain | IR | |
| | 9018 | Attribute | Must contain | Current Gender, M = Male or F = Female | See Validation Rule 11 |
| EDIFACT example: ATT+ZZZ++9:2:IR:M' | | | | | |

Message Implementation Guidelines for PAYE Earlier Year Update (2013/14)

| Segment Name | EDIFACT Element Name | Segment Content | Contents | | Notes |
|---|----------------------|-------------------------------------|------------------|----------------------------------|--------------------------------------|
| ATT – Attribute of Employee | | | Optional Segment | | |
| | 9017 | ATTRIBUTE FUNCTION QUALIFIER | Must contain | ZZZ | ZZZ = qualifier for Mutually defined |
| | C955 | ATTRIBUTE TYPE | Not used | | |
| | C956 | ATTRIBUTE DETAILS | | | |
| | 9019 | Attribute, coded | Must contain | 201 | 201 = qualifier for Passport Number |
| | 1131 | Code list qualifier | Must contain | 2 | |
| | 3055 | Code list agency | Must contain | IR | |
| | 9018 | Attribute | Must contain | Passport number – format an...35 | See Validation Rule 12 |
| EDIFACT example: ATT+ZZZ++201:2:IR:123456789ABC' | | | | | |
| DTM – Date and Time | | | Optional Segment | | |
| | C507 | DATE/TIME PERIOD | | | |
| | 2005 | Date period qualifier | Must contain | 329 | 329 = qualifier for Date of Birth |
| | 2380 | Date period | Must contain | Date of Birth - format CCYYMMDD | See Validation Rule 10 |
| | 2379 | Date period format qualifier | Must contain | 102 | 102 = qualifier for format CCYYMMDD |
| EDIFACT example: DTM+329:19751025:102' | | | | | |

Message Implementation Guidelines for PAYE Earlier Year Update (2013/14)

| Segment Name | EDIFACT Element Name | Segment Content | Contents | | Notes |
|--|----------------------|--|------------------|---|--------------------------------------|
| NAD – Name and Address | | | Optional Segment | | |
| | 3035 | PARTY QUALIFIER | Must contain | EP | EP = qualifier for Employee Partner |
| | C082 | PARTY IDENTIFICATION DETAILS | Not used | | |
| | C058 | NAME AND ADDRESS | Not used | | |
| | C080 | PARTY NAME | | | |
| | 3036 | Party name | May contain | Surname or Family Name– format an..35 | See Validation Rule 74 |
| | 3036 | Party name | May contain | Forename or Given Name – format an..35 | See Validation Rule 75 |
| | 3036 | Party name | May contain | Second Forename or Given Name – format an..35 | See Validation Rule 77 |
| | C059 | STREET | Not used | | |
| | 3164 | CITY NAME | Not used | | |
| | 3229 | COUNTRY SUB-ENTITY IDENTIFICATION | Not used | | |
| | 3251 | POSTCODE IDENTIFICATION | Not used | | |
| EDIFACT example: NAD+EP+++SMITH:D' | | | | | |
| ATT – Attribute of Employee Partner | | | Optional Segment | | |
| | 9017 | ATTRIBUTE FUNCTION QUALIFIER | Must contain | ZZZ | ZZZ = qualifier for Mutually defined |
| | C955 | ATTRIBUTE TYPE | Not used | | |
| | C956 | ATTRIBUTE DETAILS | | | |
| | 9019 | Attribute, coded | Must contain | 217 | 217 = qualifier for Partner NINO |
| | 1131 | Code list qualifier | Must contain | 2 | |
| | 3055 | Code list agency | Must contain | IR | |
| | 9018 | Attribute | Must contain | Partner National Insurance Number (NINO) – format an..9 | See Validation Rule 78 |
| EDIFACT example: ATT+ZZZ++217:2:IR:AB234567C' | | | | | |

Message Implementation Guidelines for PAYE Earlier Year Update (2013/14)

| Segment Name | EDIFACT Element Name | Segment Content | Contents | | Notes |
|--|----------------------|-------------------------------------|-------------------|-----|--|
| The following EMP group of records relates to the Employment Details and can be iterated up to a maximum of 15 times for each employee. | | | | | |
| Each entry must contain one EMP group. The NI Category group, which forms part of this group, may repeat for up to 4 NI Categories for each employment | | | | | |
| EMP – Employment details | | | Mandatory Segment | | Required to qualify following TAX/MOA segments |
| | 9003 | EMPLOYMENT QUALIFIER, CODED | Must contain | ZZZ | ZZZ = qualifier for Mutually defined |
| | C948 | EMPLOYMENT CATEGORY | | | |
| | 9005 | Employment category, coded | Must contain | ED | ED |
| | 1131 | Code list qualifier | Must contain | 6 | |
| | 3055 | Code list responsible agency, coded | Must contain | IR | |
| | 9004 | Employment category | Not used | | |
| | C951 | OCCUPATION | Not used | | |
| | C950 | QUALIFICATION CLASSIFICATION | Not used | | |
| | 3494 | JOB TITLE | Not used | | |
| | 9035 | QUALIFICATION AREA, CODED | Not used | | |
| EDIFACT example: EMP+ZZZ+ED:6:IR' | | | | | |

Message Implementation Guidelines for PAYE Earlier Year Update (2013/14)

| Segment Name | EDIFACT Element Name | Segment Content | Contents | | Notes |
|---|----------------------|------------------------------|------------------|-----------------------------------|--|
| DTM – Date and Time | | | Optional Segment | | This record is Optional. It should only be provided if the Starting Date is to be included in the message |
| | C507 | DATE/TIME PERIOD | | | |
| | 2005 | Date period qualifier | Must contain | 330 | 330 = qualifier for Starting Date |
| | 2380 | Date period | Must contain | Starting Date - format CCYYMMDD | See Validation Rule 24 |
| | 2379 | Date period format qualifier | Must contain | 102 | 102 = qualifier for Starting Date - format CCYYMMDD |
| EDIFACT example: DTM+330:20140114:102' | | | | | |
| DTM – Date and Time | | | Optional Segment | | |
| | C507 | DATE/TIME PERIOD | | | |
| | 2005 | Date period qualifier | Must contain | 337 | 337 = qualifier for Date of Leaving this employment |
| | 2380 | Date period | Must contain | Date of Leaving - format CCYYMMDD | See Validation Rule 41 |
| | 2379 | Date period format qualifier | Must contain | 102 | 102 = qualifier for Date of Leaving format CCYYMMDD |
| EDIFACT example: DTM+337:20140122:102' | | | | | |

Message Implementation Guidelines for PAYE Earlier Year Update (2013/14)

| Segment Name | EDIFACT Element Name | Segment Content | Contents | | Notes |
|---|----------------------|-------------------------------------|------------------|---|---|
| ATT – Attribute of Employment | | | Optional Segment | | |
| | 9017 | ATTRIBUTE FUNCTION QUALIFIER | Must contain | ZZZ | ZZZ = qualifier for Mutually defined |
| | C955 | ATTRIBUTE TYPE | Not used | | |
| | C956 | ATTRIBUTE DETAILS | | | |
| | 9019 | Attribute, coded | Must contain | 5 | 5 = qualifier for Starting Declaration |
| | 1131 | Code list qualifier | Must contain | 2 | |
| | 3055 | Code list agency | Must contain | IR | |
| | 9018 | Attribute | Must contain | Starting Declaration, must be A, B or C | See Validation Rule 24A |
| EDIFACT example: ATT+ZZZ++5:2:IR:A' | | | | | |
| ATT – Attribute of Employment | | | Optional Segment | | |
| | 9017 | ATTRIBUTE FUNCTION QUALIFIER | Must contain | ZZZ | ZZZ = qualifier for Mutually defined |
| | C955 | ATTRIBUTE TYPE | Not used | | |
| | C956 | ATTRIBUTE DETAILS | | | |
| | 9019 | Attribute, coded | Must contain | 21 | 21 = qualifier for Indicator of Student Loan deduction needed |
| | 1131 | Code list qualifier | Must contain | 2 | |
| | 3055 | Code list agency | Must contain | IR | |
| | 9018 | Attribute | Must contain | Indicator of Student Loan deduction needed- Must be Y | See Validation Rule 27 |
| EDIFACT example: ATT+ZZZ++21:2:IR:Y' | | | | | |

Message Implementation Guidelines for PAYE Earlier Year Update (2013/14)

| Segment Name | EDIFACT Element Name | Segment Content | Contents | Notes |
|--|----------------------|-------------------------------------|------------------|---|
| NB – If present only one of Intend to Stay 183 days or more, Intend to Stay less than 183 days or Intend to work both in and out of the UK indicators can be included | | | | |
| ATT – Attribute of Employment | | | Optional Segment | |
| | 9017 | ATTRIBUTE FUNCTION QUALIFIER | Must contain | ZZZ ZZZ = qualifier for Mutually defined |
| | C955 | ATTRIBUTE TYPE | Not used | |
| | C956 | ATTRIBUTE DETAILS | | |
| | 9019 | Attribute, coded | Must contain | 202 202 = qualifier for Intend to Stay 183 days or more indicator |
| | 1131 | Code list qualifier | Must contain | 2 |
| | 3055 | Code list agency | Must contain | IR |
| | 9018 | Attribute | Must contain | Intend to Stay 183 days or more - Must be Y See Validation Rule 28 |
| EDIFACT example: ATT+ZZZ++202:2:IR:Y' | | | | |
| ATT – Attribute of Employment | | | Optional Segment | |
| | 9017 | ATTRIBUTE FUNCTION QUALIFIER | Must contain | ZZZ ZZZ = qualifier for Mutually defined |
| | C955 | ATTRIBUTE TYPE | Not used | |
| | C956 | ATTRIBUTE DETAILS | | |
| | 9019 | Attribute, coded | Must contain | 203 203 = qualifier for Intend to Stay less than 183 days indicator |
| | 1131 | Code list qualifier | Must contain | 2 |
| | 3055 | Code list agency | Must contain | IR |
| | 9018 | Attribute | Must contain | Intend to Stay less than 183 days - Must be Y See Validation Rule 29 |
| EDIFACT example: ATT+ZZZ++203:2:IR:Y' | | | | |

Message Implementation Guidelines for PAYE Earlier Year Update (2013/14)

| Segment Name | EDIFACT Element Name | Segment Content | Contents | | Notes |
|--|----------------------|-------------------------------------|------------------|--|--|
| ATT – Attribute of Employment | | | Optional Segment | | |
| | 9017 | ATTRIBUTE FUNCTION QUALIFIER | Must contain | ZZZ | ZZZ = qualifier for Mutually defined |
| | C955 | ATTRIBUTE TYPE | Not used | | |
| | C956 | ATTRIBUTE DETAILS | | | |
| | 9019 | Attribute, coded | Must contain | 204 | 204 = qualifier for Intend to work both in and out of the UK indicator |
| | 1131 | Code list qualifier | Must contain | 2 | |
| | 3055 | Code list agency | Must contain | IR | |
| | 9018 | Attribute | Must contain | Intend to work both in and out of the UK - Must be Y | See Validation Rule 30 |
| EDIFACT example: ATT+ZZZ++204:2:IR:Y' | | | | | |
| ATT – Attribute of Employment | | | Optional Segment | | |
| | 9017 | ATTRIBUTE FUNCTION QUALIFIER | Must contain | ZZZ | ZZZ = qualifier for Mutually defined |
| | C955 | ATTRIBUTE TYPE | Not used | | |
| | C956 | ATTRIBUTE DETAILS | | | |
| | 9019 | Attribute, coded | Must contain | 60 | 60 = qualifier for EEA Citizen |
| | 1131 | Code list qualifier | Must contain | 2 | |
| | 3055 | Code list agency | Must contain | IR | |
| | 9018 | Attribute | Must contain | EEA Citizen, must be Y | See Validation Rule 31 |
| EDIFACT example: ATT+ZZZ++60:2:IR:Y' | | | | | |

Message Implementation Guidelines for PAYE Earlier Year Update (2013/14)

| Segment Name | EDIFACT Element Name | Segment Content | Contents | | Notes |
|---|----------------------|-------------------------------------|------------------|-----------------------------------|---|
| ATT – Attribute of Employment | | | Optional Segment | | |
| | 9017 | ATTRIBUTE FUNCTION QUALIFIER | Must contain | ZZZ | ZZZ = qualifier for Mutually defined |
| | C955 | ATTRIBUTE TYPE | Not used | | |
| | C956 | ATTRIBUTE DETAILS | | | |
| | 9019 | Attribute, coded | Must contain | 61 | 61 = qualifier for EPM6 (Modified) Scheme |
| | 1131 | Code list qualifier | Must contain | 2 | |
| | 3055 | Code list agency | Must contain | IR | |
| | 9018 | Attribute | Must contain | EPM6 (Modified) Scheme, must be Y | See Validation Rule 31A |
| EDIFACT example: ATT+ZZZ++61:2:IR:Y' | | | | | |
| ATT – Attribute of Employment | | | Optional Segment | | |
| | 9017 | ATTRIBUTE FUNCTION QUALIFIER | Must contain | ZZZ | ZZZ = qualifier for Mutually defined |
| | C955 | ATTRIBUTE TYPE | Not used | | |
| | C956 | ATTRIBUTE DETAILS | | | |
| | 9019 | Attribute, coded | Must contain | 19 | 19 = qualifier for Employee Payroll ID |
| | 1131 | Code list qualifier | Must contain | 2 | |
| | 3055 | Code list agency | Must contain | IR | |
| | 9018 | Attribute | Must contain | Payroll ID format an..35 | See Validation Rule 38 |
| EDIFACT example: ATT+ZZZ++19:2:IR:14755' | | | | | |

Message Implementation Guidelines for PAYE Earlier Year Update (2013/14)

| Segment Name | EDIFACT Element Name | Segment Content | Contents | | Notes |
|--|----------------------|-------------------------------------|------------------|------------|---|
| ATT – Attribute of Employment | | | Optional Segment | | This record is Optional. |
| | 9017 | ATTRIBUTE FUNCTION QUALIFIER | Must contain | ZZZ | ZZZ = qualifier for Mutually defined |
| | C955 | ATTRIBUTE TYPE | Not used | | |
| | C956 | ATTRIBUTE DETAILS | | | |
| | 9019 | Attribute, coded | Must contain | 205 | 205 = qualifier for Recently Bereaved Spouse/Civil Partner (Occupational Pension) indicator |
| | 1131 | Code list qualifier | Must contain | 2 | |
| | 3055 | Code list agency | Must contain | IR | |
| | 9018 | Attribute | Must contain | Must be Y | See Validation Rule 33 |
| EDIFACT example: ATT+ZZZ++205:2:IR:Y' | | | | | |
| ATT – Attribute of Employment | | | Optional Segment | | |
| | 9017 | ATTRIBUTE FUNCTION QUALIFIER | Must contain | ZZZ | ZZZ = qualifier for Mutually defined |
| | C955 | ATTRIBUTE TYPE | Not used | | |
| | C956 | ATTRIBUTE DETAILS | | | |
| | 9019 | Attribute, coded | Must contain | 228 | 228 = qualifier for Payment to a Non-Individual Indicator |
| | 1131 | Code list qualifier | Must contain | 2 | |
| | 3055 | Code list agency | Must contain | IR | |
| | 9018 | Attribute | Must contain | Must be Y | See Validation Rule 147 |
| EDIFACT example: ATT+ZZZ++228:2:IR:Y' | | | | | |

Message Implementation Guidelines for PAYE Earlier Year Update (2013/14)

| Segment Name | EDIFACT Element Name | Segment Content | Contents | | Notes |
|--|----------------------|---------------------------|------------------|--|--|
| TAX – Tax Details | | | Optional Segment | | Required to qualify following MOA record This record should be provided if the Recently Bereaved Spouse/Civil Partner (Occupational Pension) indicator is present |
| | 5283 | TAX DETAILS | Must contain | 9 | |
| | C241 | DUTY/TAX/FEE TYPE | | | |
| | 5153 | Tax type, coded | Must contain | 151 | 151 = qualifier for Annual Amount of Occupational Pension |
| | 1131 | Code list qualifier | Must contain | 10 | |
| | 3055 | Code list agency | Must contain | IR | |
| EDIFACT example: TAX+9+151:10:IR' | | | | | |
| MOA – Monetary Amount | | | Optional Segment | | This record should be provided if the Recently Bereaved Spouse/Civil Partner (Occupational Pension) indicator is present |
| | C156 | MONETARY AMOUNT | | | |
| | 5025 | Monetary amount qualifier | Must contain | ZZZ | ZZZ = qualifier for Mutually defined |
| | 5004 | Monetary amount | Must contain | Annual amount of Occupational Pension - format n..11, specified in pence | See Validation Rule 34 |
| | 6345 | Currency, coded | May contain | GBP (Pounds Sterling) | |
| EDIFACT example: MOA+ZZZ:61200' | | | | | |

Message Implementation Guidelines for PAYE Earlier Year Update (2013/14)

| Segment Name | EDIFACT Element Name | Segment Content | Contents | | Notes |
|--|----------------------|---------------------------|------------------|--|--|
| TAX – Tax Details | | | Optional Segment | | Required to qualify following MOA segment |
| | 5283 | TAX DETAILS | Must contain | 9 | |
| | C241 | DUTY/TAX/FEE TYPE | | | |
| | 5153 | Tax type, coded | Must contain | 153 | 153 = qualifier for Taxable Pay - EYU |
| | 1131 | Code list qualifier | Must contain | 10 | |
| | 3055 | Code list agency | Must contain | IR | |
| EDIFACT example: TAX+9+153:10:IR' | | | | | |
| MOA – Monetary Amount | | | Optional Segment | | |
| | C156 | MONETARY AMOUNT | | | |
| | 5025 | Monetary amount qualifier | Must contain | ZZZ | ZZZ = qualifier for Mutually defined |
| | 5004 | Monetary amount | Must contain | Taxable pay – EYU - format n..11, specified in pence | See Validation Rule 120 |
| | 6345 | Currency, coded | May contain | GBP (Pounds Sterling) | |
| EDIFACT example: MOA+ZZZ:161200' | | | | | |

Message Implementation Guidelines for PAYE Earlier Year Update (2013/14)

| Segment Name | EDIFACT Element Name | Segment Content | Contents | | Notes |
|--|----------------------|---------------------------|------------------|--|--|
| TAX – Tax Details | | | Optional Segment | | Required to qualify following MOA segment |
| | 5283 | TAX DETAILS | Must contain | 9 | |
| | C241 | DUTY/TAX/FEE TYPE | | | |
| | 5153 | Tax type, coded | Must contain | 164 | 164 = qualifier for Student Loan Repayment - EYU |
| | 1131 | Code list qualifier | Must contain | 10 | |
| | 3055 | Code list agency | Must contain | IR | |
| EDIFACT example: TAX+9+164:10:IR' | | | | | |
| MOA – Monetary Amount | | | Optional Segment | | |
| | C156 | MONETARY AMOUNT | | | |
| | 5025 | Monetary amount qualifier | Must contain | ZZZ | ZZZ = qualifier for Mutually defined |
| | 5004 | Monetary amount | Must contain | Student Loan Repayment - EYU - format n..7, specified in pence | See Validation Rule 122 |
| | 6345 | Currency, coded | May contain | GBP (Pounds Sterling) | |
| EDIFACT example: MOA+ZZZ:61200' | | | | | |

Message Implementation Guidelines for PAYE Earlier Year Update (2013/14)

| Segment Name | EDIFACT Element Name | Segment Content | Contents | | Notes |
|--|----------------------|---------------------------|------------------|---|--|
| TAX – Tax Details | | | Optional Segment | | Required to qualify following MOA segment |
| | 5283 | TAX DETAILS | Must contain | 9 | |
| | C241 | DUTY/TAX/FEE TYPE | | | |
| | 5153 | Tax type, coded | Must contain | 165 | 165 = qualifier for Tax deducted or refunded from this payment |
| | 1131 | Code list qualifier | Must contain | 10 | |
| | 3055 | Code list agency | Must contain | IR | |
| EDIFACT example: TAX+9+165:10:IR' | | | | | |
| MOA – Monetary Amount | | | Optional Segment | | |
| | C156 | MONETARY AMOUNT | | | |
| | 5025 | Monetary amount qualifier | Must contain | ZZZ | ZZZ = qualifier for Mutually defined |
| | 5004 | Monetary amount | Must contain | Tax Deducted or Refunded - format n..12, specified in pence | See Validation Rule 121 |
| | 6345 | Currency, coded | May contain | GBP (Pounds Sterling) | |
| EDIFACT example: MOA+ZZZ:61200' | | | | | |

Message Implementation Guidelines for PAYE Earlier Year Update (2013/14)

| Segment Name | EDIFACT Element Name | Segment Content | Contents | | Notes |
|---|----------------------|---------------------------|------------------|---|---|
| TAX – Tax Details | | | Optional Segment | | Required to qualify following MOA segment |
| | 5283 | TAX DETAILS | Must contain | 9 | |
| | C241 | DUTY/TAX/FEE TYPE | | | |
| | 5153 | Tax type, coded | Must contain | 66 | 66 = qualifier for Statutory Sick Pay (SSP) - EYU |
| | 1131 | Code list qualifier | Must contain | 10 | |
| | 3055 | Code list agency | Must contain | IR | |
| EDIFACT example: TAX+9+66:10:IR' | | | | | |
| MOA – Monetary Amount | | | Optional Segment | | |
| | C156 | MONETARY AMOUNT | | | |
| | 5025 | Monetary amount qualifier | Must contain | ZZZ | ZZZ = qualifier for Mutually defined |
| | 5004 | Monetary amount | Must contain | Statutory Sick Pay (SSP) - EYU- format n..6, specified in pence | See Validation Rule 123 |
| | 6345 | Currency, coded | May contain | GBP (Pounds Sterling) | |
| EDIFACT example: MOA+ZZZ:61200' | | | | | |

Message Implementation Guidelines for PAYE Earlier Year Update (2013/14)

| Segment Name | EDIFACT Element Name | Segment Content | Contents | | Notes |
|---|----------------------|---------------------------|------------------|---|--|
| TAX – Tax Details | | | Optional Segment | | Required to qualify following MOA segment |
| | 5283 | TAX DETAILS | Must contain | 9 | |
| | C241 | DUTY/TAX/FEE TYPE | | | |
| | 5153 | Tax type, coded | Must contain | 65 | 65 = qualifier for Statutory Maternity Pay (SMP) - EYU |
| | 1131 | Code list qualifier | Must contain | 10 | |
| | 3055 | Code list agency | Must contain | IR | |
| EDIFACT example: TAX+9+65:10:IR' | | | | | |
| MOA – Monetary Amount | | | Optional Segment | | |
| | C156 | MONETARY AMOUNT | | | |
| | 5025 | Monetary amount qualifier | Must contain | ZZZ | ZZZ = qualifier for Mutually defined |
| | 5004 | Monetary amount | Must contain | Statutory Maternity Pay - EYU - format n..8, specified in pence | See Validation Rule 124 |
| | 6345 | Currency, coded | May contain | GBP (Pounds Sterling) | |
| EDIFACT example: MOA+ZZZ:61200' | | | | | |

Message Implementation Guidelines for PAYE Earlier Year Update (2013/14)

| Segment Name | EDIFACT Element Name | Segment Content | Contents | | Notes |
|--|----------------------|---------------------------|------------------|---|---|
| TAX – Tax Details | | | Optional Segment | | Required to qualify following MOA segment |
| | 5283 | TAX DETAILS | Must contain | 9 | |
| | C241 | DUTY/TAX/FEE TYPE | | | |
| | 5153 | Tax type, coded | Must contain | 126 | 126 = qualifier for Ordinary Statutory Paternity Pay (OSPP) - EYU |
| | 1131 | Code list qualifier | Must contain | 10 | |
| | 3055 | Code list agency | Must contain | IR | |
| EDIFACT example: TAX+9+126:10:IR' | | | | | |
| MOA – Monetary Amount | | | Optional Segment | | |
| | C156 | MONETARY AMOUNT | | | |
| | 5025 | Monetary amount qualifier | Must contain | ZZZ | ZZZ = qualifier for Mutually defined |
| | 5004 | Monetary amount | Must contain | Ordinary Statutory Paternity Pay (OSPP) - EYU – format n..8, specified in pence | See Validation Rule 125 |
| | 6345 | Currency, coded | May contain | GBP (Pounds Sterling) | |
| EDIFACT example: MOA+ZZZ:61200' | | | | | |

Message Implementation Guidelines for PAYE Earlier Year Update (2013/14)

| Segment Name | EDIFACT Element Name | Segment Content | Contents | | Notes |
|--|----------------------|---------------------------|------------------|--|--|
| TAX – Tax Details | | | Optional Segment | | Required to qualify following MOA segment |
| | 5283 | TAX DETAILS | Must contain | 9 | |
| | C241 | DUTY/TAX/FEE TYPE | | | |
| | 5153 | Tax type, coded | Must contain | 127 | 127 = qualifier for Statutory Adoption Pay (SAP) - EYU |
| | 1131 | Code list qualifier | Must contain | 10 | |
| | 3055 | Code list agency | Must contain | IR | |
| EDIFACT example: TAX+9+127:10:IR' | | | | | |
| MOA – Monetary Amount | | | Optional Segment | | |
| | C156 | MONETARY AMOUNT | | | |
| | 5025 | Monetary amount qualifier | Must contain | ZZZ | ZZZ = qualifier for Mutually defined |
| | 5004 | Monetary amount | Must contain | Statutory Adoption Pay (SAP) - EYU - format n..8, specified in pence | See Validation Rule 126 |
| | 6345 | Currency, coded | May contain | GBP (Pounds Sterling) | |
| EDIFACT example: MOA+ZZZ:61200' | | | | | |

Message Implementation Guidelines for PAYE Earlier Year Update (2013/14)

| Segment Name | EDIFACT Element Name | Segment Content | Contents | | Notes |
|--|----------------------|---------------------------|------------------|---|---|
| TAX – Tax Details | | | Optional Segment | | Required to qualify following MOA segment |
| | 5283 | TAX DETAILS | Must contain | 9 | |
| | C241 | DUTY/TAX/FEE TYPE | | | |
| | 5153 | Tax type, coded | Must contain | 136 | 136 = qualifier for Additional Statutory Paternity Pay (ASPP) - EYU |
| | 1131 | Code list qualifier | Must contain | 10 | |
| | 3055 | Code list agency | Must contain | IR | |
| EDIFACT example: TAX+9+136:10:IR' | | | | | |
| MOA – Monetary Amount | | | Optional Segment | | |
| | C156 | MONETARY AMOUNT | | | |
| | 5025 | Monetary amount qualifier | Must contain | ZZZ | ZZZ = qualifier for Mutually defined |
| | 5004 | Monetary amount | Must contain | Additional Statutory Paternity Pay (ASPP) - EYU – format n..8, specified in pence | See Validation Rule 127 |
| | 6345 | Currency, coded | May contain | GBP (Pounds Sterling) | |
| EDIFACT example: MOA+ZZZ:61200' | | | | | |

Message Implementation Guidelines for PAYE Earlier Year Update (2013/14)

| Segment Name | EDIFACT Element Name | Segment Content | Contents | | Notes |
|--|----------------------|---------------------------|------------------|---|--|
| TAX – Tax Details | | | Optional Segment | | Required to qualify following MOA segment |
| | 5283 | TAX DETAILS | Must contain | 9 | |
| | C241 | DUTY/TAX/FEE TYPE | | | |
| | 5153 | Tax type, coded | Must contain | 175 | 175 = qualifier for Employee Pension Contributions paid under 'net pay arrangements'-EYU |
| | 1131 | Code list qualifier | Must contain | 10 | |
| | 3055 | Code list agency | Must contain | IR | |
| EDIFACT example: TAX+9+175:10:IR' | | | | | |
| MOA – Monetary Amount | | | Optional Segment | | |
| | C156 | MONETARY AMOUNT | | | |
| | 5025 | Monetary amount qualifier | Must contain | ZZZ | ZZZ = qualifier for Mutually defined |
| | 5004 | Monetary amount | Must contain | Employee pension contributions - format n..11 | See Validation Rule 160 |
| | 6345 | Currency, coded | May contain | GBP (Pounds Sterling) | |
| EDIFACT example: MOA+ZZZ:61200' | | | | | |

Message Implementation Guidelines for PAYE Earlier Year Update (2013/14)

| Segment Name | EDIFACT Element Name | Segment Content | Contents | | Notes |
|--|----------------------|---------------------------|------------------|---|--|
| TAX – Tax Details | | | Optional Segment | | Required to qualify following MOA segment |
| | 5283 | TAX DETAILS | Must contain | 9 | |
| | C241 | DUTY/TAX/FEE TYPE | | | |
| | 5153 | Tax type, coded | Must contain | 176 | 176 = qualifier for Employee Contributions not Paid under net pay arrangements-EYU |
| | 1131 | Code list qualifier | Must contain | 10 | |
| | 3055 | Code list agency | Must contain | IR | |
| EDIFACT example: TAX+9+176:10:IR' | | | | | |
| MOA – Monetary Amount | | | Optional Segment | | |
| | C156 | MONETARY AMOUNT | | | |
| | 5025 | Monetary amount qualifier | Must contain | ZZZ | ZZZ = qualifier for Mutually defined |
| | 5004 | Monetary amount | Must contain | Employee Contributions not Paid under net pay arrangements-EYU - format n..11 | See Validation Rule 161 |
| | 6345 | Currency, coded | May contain | GBP (Pounds Sterling) | |
| EDIFACT example: MOA+ZZZ:6120000' | | | | | |

Message Implementation Guidelines for PAYE Earlier Year Update (2013/14)

| Segment Name | EDIFACT Element Name | Segment Content | Contents | | Notes |
|--|----------------------|---------------------------|------------------|---|--|
| TAX – Tax Details | | | Optional Segment | | Required to qualify following MOA segment |
| | 5283 | TAX DETAILS | Must contain | 9 | |
| | C241 | DUTY/TAX/FEE TYPE | | | |
| | 5153 | Tax type, coded | Must contain | 174 | 174 = qualifier for Benefits Taxed Via the Payroll-EYU |
| | 1131 | Code list qualifier | Must contain | 10 | |
| | 3055 | Code list agency | Must contain | IR | |
| EDIFACT example: TAX+9+174:10:IR' | | | | | |
| MOA – Monetary Amount | | | Optional Segment | | |
| | C156 | MONETARY AMOUNT | | | |
| | 5025 | Monetary amount qualifier | Must contain | ZZZ | ZZZ = qualifier for Mutually defined |
| | 5004 | Monetary amount | Must contain | Benefits Taxed Via Payroll - format n..11 | See Validation Rule 165 |
| | 6345 | Currency, coded | May contain | GBP (Pounds Sterling) | |
| EDIFACT example: MOA+ZZZ:61200' | | | | | |

Message Implementation Guidelines for PAYE Earlier Year Update (2013/14)

| Segment Name | EDIFACT Element Name | Segment Content | Contents | | Notes |
|--|----------------------|-------------------------------------|------------------|--|--|
| ALI – Additional Information relating to Employee | | | Optional Segment | | This segment is Optional. It should only be provided if Trivial Commutation Payment Types and Amounts are to be provided. |
| | 3239 | COUNTRY OF ORIGIN, CODED | Must contain | ZZZ | ZZZ = qualifier for Mutually defined |
| | 9213 | Type of Duty, coded | Not used | | |
| | 4183 | Special Condition, coded | Not used | | |
| | 4183 | Special Condition, coded | Not used | | |
| | 4183 | Special Condition, coded | Not used | | |
| | 4183 | Special Condition, coded | Not used | | |
| | 4183 | Special Condition, coded | Not used | | |
| EDIFACT example: ALI+ZZZ' | | | | | |
| <p>The following group of records relate to Employee Trivial Commutation Payments (Types and Amounts) and can be iterated up to a maximum of 3 times</p> <p>If a Trivial Commutation Payment is required to be entered then all data items within the group become Mandatory</p> | | | | | |
| ATT – Attribute of Employment | | | Optional Segment | | |
| | 9017 | ATTRIBUTE FUNCTION QUALIFIER | Must contain | ZZZ | ZZZ = qualifier for Mutually defined |
| | C955 | ATTRIBUTE TYPE | Not used | | |
| | C956 | ATTRIBUTE DETAILS | | | |
| | 9019 | Attribute, coded | Must contain | Trivial Commutation Payment Type – Format a1 | See Validation Rule 146 |
| | 1131 | Code list qualifier | Must contain | 2 | |
| | 3055 | Code list agency | Must contain | IR | |
| | 9018 | Attribute | Not used | | |
| EDIFACT example: ATT+ZZZ++A:2:IR' | | | | | |

Message Implementation Guidelines for PAYE Earlier Year Update (2013/14)

| Segment Name | EDIFACT Element Name | Segment Content | Contents | | Notes |
|---|----------------------|---------------------------|------------------|--|--|
| TAX – Tax Details | | | Optional Segment | | Required to qualify following MOA segment |
| | 5283 | TAX DETAILS | Must contain | 9 | |
| | C241 | DUTY/TAX/FEE TYPE | | | |
| | 5153 | Tax type, coded | Must contain | 173 | 173 = qualifier for Trivial Commutation Payment Amount |
| | 1131 | Code list qualifier | Must contain | 10 | |
| | 3055 | Code list agency | Must contain | IR | |
| EDIFACT example: TAX+9+173:10:IR' | | | | | |
| MOA – Monetary Amount | | | Optional Segment | | |
| | C156 | MONETARY AMOUNT | | | |
| | 5025 | Monetary amount qualifier | Must contain | ZZZ | ZZZ = qualifier for Mutually defined |
| | 5004 | Monetary amount | Must contain | Trivial Commutation Payment Amount - format n..7, specified in pence | See Validation Rule 148 |
| | 6345 | Currency, coded | May contain | GBP (Pounds Sterling) | |
| EDIFACT example: MOA+ZZZ:61200' | | | | | |
| Further Trivial Commutation Payment records can be repeated here up to a maximum of 3 iterations | | | | | |

Message Implementation Guidelines for PAYE Earlier Year Update (2013/14)

| Segment Name | EDIFACT Element Name | Segment Content | Contents | Notes |
|--|----------------------|-------------------------------------|------------------|--|
| <p>The following optional group of records relates to Employee Contribution NI Letters and Values and can be iterated up to a maximum of 4 times.</p> <p>If an NI Letter –EYU is supplied all data items within the group become Mandatory, except SCON, which remains optional.</p> | | | | |
| EMP –Employee Contributions | | | Optional Segment | This segment is Optional and is required to qualify following TAX/MOA segments |
| | 9003 | EMPLOYMENT QUALIFIER, CODED | Must contain | ZZZ ZZZ = qualifier for Mutually defined |
| | C948 | EMPLOYMENT CATEGORY | | |
| | 9005 | Employment category, coded | Must contain | NI Letter-EYU – format a1 |
| | 1131 | Code list qualifier | Must contain | 6 See Validation Rule 128 |
| | 3055 | Code list responsible agency, coded | Must contain | IR |
| | 9004 | Employment category | Not Used | |
| | C951 | OCCUPATION | Not Used | |
| | C950 | QUALIFICATION CLASSIFICATION | If used | This field is Optional. It should only be provided if the SCON needs to be included in the submission |
| | 9007 | Qualification classification, coded | Must contain | 1 |
| | 1131 | Code list qualifier | Must contain | 7 |
| | 3055 | Code list responsible agency, coded | Must contain | IR |
| | 9006 | Qualification classification | Must contain | Scheme Contracted Out Number (SCON) - format an9 See Validation Rule 144 |
| | 3494 | JOB TITLE | Not Used | |
| | 9035 | QUALIFICATION AREA, CODED | Not Used | |
| EDIFACT example: EMP+ZZZ+F:6:IR++1:7:IR:S1301234T' | | | | |

Message Implementation Guidelines for PAYE Earlier Year Update (2013/14)

| Segment Name | EDIFACT Element Name | Segment Content | Contents | | Notes |
|---|----------------------|---------------------------|-------------------|--|--|
| TAX – Tax Details | | | Mandatory Segment | | Required to qualify following MOA segment |
| | 5283 | TAX DETAILS | Must contain | 9 | |
| | C241 | DUTY/TAX/FEE TYPE | | | |
| | 5153 | Tax type, coded | Must contain | 20 | 20 = qualifier for AT-LEL-EYU |
| | 1131 | Code list qualifier | Must contain | 10 | |
| | 3055 | Code list agency | Must contain | IR | |
| EDIFACT example: TAX+9+20:10:IR' | | | | | |
| MOA – Monetary Amount | | | Mandatory Segment | | |
| | C156 | MONETARY AMOUNT | | | |
| | 5025 | Monetary amount qualifier | Must contain | ZZZ | ZZZ = qualifier for Mutually defined |
| | 5004 | Monetary amount | Must contain | AT-LEL-EYU - format n..6, specified in pence | See Validation Rule 130 |
| | 6345 | Currency, coded | May contain | GBP (Pounds Sterling) | |
| EDIFACT example: MOA+ZZZ:61200' | | | | | |

Message Implementation Guidelines for PAYE Earlier Year Update (2013/14)

| Segment Name | EDIFACT Element Name | Segment Content | Contents | | Notes |
|---|----------------------|---------------------------|-------------------|--|--|
| TAX – Tax Details | | | Mandatory Segment | | Required to qualify following MOA segment |
| | 5283 | TAX DETAILS | Must contain | 9 | |
| | C241 | DUTY/TAX/FEE TYPE | | | |
| | 5153 | Tax type, coded | Must contain | 16 | 16 = qualifier for LEL-TO-PT-EYU |
| | 1131 | Code list qualifier | Must contain | 10 | |
| | 3055 | Code list agency | Must contain | IR | |
| EDIFACT example: TAX+9+16:10:IR' | | | | | |
| MOA – Monetary Amount | | | Mandatory Segment | | |
| | C156 | MONETARY AMOUNT | | | |
| | 5025 | Monetary amount qualifier | Must contain | ZZZ | ZZZ = qualifier for Mutually defined |
| | 5004 | Monetary amount | Must contain | LEL-TO-PT-EYU - format n..6. This field must be expressed in pence, e.g. £45.75 would be expressed as 4575 | See Validation Rule 131 |
| | 6345 | Currency, coded | May contain | GBP (Pounds Sterling) | |
| EDIFACT example: MOA+ZZZ:61200' | | | | | |

Message Implementation Guidelines for PAYE Earlier Year Update (2013/14)

| Segment Name | EDIFACT Element Name | Segment Content | Contents | | Notes |
|---|----------------------|---------------------------|-------------------|--|--|
| TAX – Tax Details | | | Mandatory Segment | | Required to qualify following MOA segment |
| | 5283 | TAX DETAILS | Must contain | 9 | |
| | C241 | DUTY/TAX/FEE TYPE | | | |
| | 5153 | Tax type, coded | Must contain | 14 | 14 = qualifier for PT-TO-UAP-EYU |
| | 1131 | Code list qualifier | Must contain | 10 | |
| | 3055 | Code list agency | Must contain | IR | |
| EDIFACT example: TAX+9+14:10:IR' | | | | | |
| MOA – Monetary Amount | | | Mandatory Segment | | |
| | C156 | MONETARY AMOUNT | | | |
| | 5025 | Monetary amount qualifier | Must contain | ZZZ | ZZZ = qualifier for Mutually defined |
| | 5004 | Monetary amount | Must contain | PT-TO-UAP-EYU - format n..7. This field must be expressed in pence, e.g. £45.75 would be expressed as 4575 | See Validation Rule 132 |
| | 6345 | Currency, coded | May contain | GBP (Pounds Sterling) | |
| EDIFACT example: MOA+ZZZ:61200' | | | | | |

Message Implementation Guidelines for PAYE Earlier Year Update (2013/14)

| Segment Name | EDIFACT Element Name | Segment Content | Contents | | Notes |
|---|----------------------|---------------------------|-------------------|---|--|
| TAX – Tax Details | | | Mandatory Segment | | Required to qualify following MOA segment |
| | 5283 | TAX DETAILS | Must contain | 9 | |
| | C241 | DUTY/TAX/FEE TYPE | | | |
| | 5153 | Tax type, coded | Must contain | 15 | 15 = qualifier for UAP-TO-UEL-EYU |
| | 1131 | Code list qualifier | Must contain | 10 | |
| | 3055 | Code list agency | Must contain | IR | |
| EDIFACT example: TAX+9+15:10:IR' | | | | | |
| MOA – Monetary Amount | | | Mandatory Segment | | |
| | C156 | MONETARY AMOUNT | | | |
| | 5025 | Monetary amount qualifier | Must contain | ZZZ | ZZZ = qualifier for Mutually defined |
| | 5004 | Monetary amount | Must contain | UAP-TO-UEL-EYU - format n..7. This field must be expressed in pence, e.g. £45.75 would be expressed as 4575 | See Validation Rule 133 |
| | 6345 | Currency, coded | May contain | GBP (Pounds Sterling) | |
| EDIFACT example: MOA+ZZZ:61200' | | | | | |

Message Implementation Guidelines for PAYE Earlier Year Update (2013/14)

| Segment Name | EDIFACT Element Name | Segment Content | Contents | | Notes |
|-----------------------------------|----------------------|---------------------------|-------------------|--|--|
| TAX – Tax Details | | | Mandatory Segment | | Required to qualify following MOA segment |
| | 5283 | TAX DETAILS | Must contain | 9 | |
| | C241 | DUTY/TAX/FEE TYPE | | | |
| | 5153 | Tax type, coded | Must contain | 167 | 167 = qualifier for Total of Employer NI Contributions - EYU |
| | 1131 | Code list qualifier | Must contain | 10 | |
| | 3055 | Code list agency | Must contain | IR | |
| EDIFACT example: TAX+9+167:10:IR' | | | | | |
| MOA – Monetary Amount | | | Mandatory Segment | | |
| | C156 | MONETARY AMOUNT | | | |
| | 5025 | Monetary amount qualifier | Must contain | ZZZ | ZZZ = qualifier for Mutually defined |
| | 5004 | Monetary amount | Must contain | Total of Employer NI Contributions - EYU – format n..11 specified in pence | See Validation Rule 134 |
| | 6345 | Currency, coded | May contain | GBP (Pounds Sterling) | |
| EDIFACT example: MOA+ZZZ:61200' | | | | | |

Message Implementation Guidelines for PAYE Earlier Year Update (2013/14)

| Segment Name | EDIFACT Element Name | Segment Content | Contents | | Notes |
|-----------------------------------|----------------------|---------------------------|-------------------|---|---|
| TAX – Tax Details | | | Mandatory Segment | | Required to qualify following MOA segment |
| | 5283 | TAX DETAILS | Must contain | 9 | |
| | C241 | DUTY/TAX/FEE TYPE | | | |
| | 5153 | Tax type, coded | Must contain | 169 | 169 = qualifier for Employees Contributions on all Earnings - EYU |
| | 1131 | Code list qualifier | Must contain | 10 | |
| | 3055 | Code list agency | Must contain | IR | |
| EDIFACT example: TAX+9+169:10:IR' | | | | | |
| MOA – Monetary Amount | | | Mandatory Segment | | |
| | C156 | MONETARY AMOUNT | | | |
| | 5025 | Monetary amount qualifier | Must contain | ZZZ | ZZZ = qualifier for Mutually defined |
| | 5004 | Monetary amount | Must contain | Employees Contributions on all Earnings - EYU – format n..11 specified in pence | See Validation Rule 135 |
| | 6345 | Currency, coded | May contain | GBP (Pounds Sterling) | |
| EDIFACT example: MOA+ZZZ:91200' | | | | | |

Message Implementation Guidelines for PAYE Earlier Year Update (2013/14)

| Segment Name | EDIFACT Element Name | Segment Content | Contents | | Notes |
|--|----------------------|-------------------------------------|------------------|--|--|
| TAX – Tax Details | | | Optional Segment | | Required to qualify following MOA segment |
| | 5283 | TAX DETAILS | Must contain | 9 | |
| | C241 | DUTY/TAX/FEE TYPE | | | |
| | 5153 | Tax type, coded | Must contain | 172 | 172 = qualifier for Gross Earnings for NICs |
| | 1131 | Code list qualifier | Must contain | 10 | |
| | 3055 | Code list agency | Must contain | IR | |
| EDIFACT example: TAX+9+172:10:IR' | | | | | |
| MOA – Monetary Amount | | | Optional Segment | | |
| | C156 | MONETARY AMOUNT | | | |
| | 5025 | Monetary amount qualifier | Must contain | ZZZ | ZZZ = qualifier for Mutually defined |
| | 5004 | Monetary amount | Must contain | Gross Earnings for NICs– format n..11 specified in pence | See Validation Rule 129 |
| | 6345 | Currency, coded | May contain | GBP (Pounds Sterling) | |
| EDIFACT example: MOA+ZZZ:61200' | | | | | |
| ATT – Attribute of Employment | | | Optional Segment | | This record is Optional. |
| | 9017 | ATTRIBUTE FUNCTION QUALIFIER | Must contain | ZZZ | ZZZ = qualifier for Mutually defined |
| | C955 | ATTRIBUTE TYPE | Not used | | |
| | C956 | ATTRIBUTE DETAILS | | | |
| | 9019 | Attribute, coded | Must contain | 234 | 234 = qualifier for NIC Refund |
| | 1131 | Code list qualifier | Must contain | 2 | |
| | 3055 | Code list agency | Must contain | IR | |
| | 9018 | Attribute | Must contain | NIC Refund - format Y or N | See Validation Rule 143 |
| EDIFACT example: ATT+ZZZ++234:2:IR:Y' | | | | | |
| Further Employee Contribution NI Letters and Values records can be repeated here up to a maximum of 4 iterations. | | | | | |

Message Implementation Guidelines for PAYE Earlier Year Update (2013/14)

| Segment Name | EDIFACT Element Name | Segment Content | Contents | | Notes |
|--|----------------------|------------------------------|-------------------|--------------------------|--|
| ALC – Allowance or Charge | | | Mandatory Segment | | |
| | 5463 | ALLOWANCE QUALIFIER | Must contain | ZZZ | ZZZ = qualifier for Mutually defined |
| | C552 | ALLOWANCE OR CHARGE NUMBER | Not used | | |
| | 4471 | SETTLEMENT, CODED | Not used | | |
| | 1227 | SEQUENCE INDICATOR, CODED | Not used | | |
| | C214 | SPECIAL SERVICES | | | |
| | 7161 | Special services, coded | Must contain | 4 | 4 = qualifier for Tax Code |
| | 1131 | Code list qualifier | Must contain | 1 | |
| | 3055 | Code list agency | Must contain | IR | |
| | 7160 | Special service | Must contain | Tax Code - format an..7 | See Validation Rule 55 |
| EDIFACT example: ALC+ZZZ++++4:1:IR:500L' | | | | | |
| ATT – Attribute of Allowance or Charge | | | Optional Segment | | This record is Optional. It should only be provided if SVR comes into force. |
| | 9017 | ATTRIBUTE FUNCTION QUALIFIER | Must contain | ZZZ | ZZZ = qualifier for Mutually defined |
| | C955 | ATTRIBUTE TYPE | Not used | | |
| | C956 | ATTRIBUTE DETAILS | | | |
| | 9019 | Attribute, coded | Must contain | 1 | 1 = qualifier for SVR Indicator |
| | 1131 | Code list qualifier | Must contain | 4 | |
| | 3055 | Code list agency | Must contain | IR | |
| | 9018 | Attribute | Not used | SVR Indicator – format Y | See Validation Rule 55A |
| EDIFACT example: ATT+ZZZ++1:4:IR' | | | | | |

Message Implementation Guidelines for PAYE Earlier Year Update (2013/14)

| Segment Name | EDIFACT Element Name | Segment Content | Contents | | Notes |
|--|----------------------|------------------------------|-------------------|--|---|
| ATT – Attribute of Allowance or Charge | | | Optional Segment | | This record is Optional. It should only be provided if Week 1 / Month 1 was in force at the end of the tax year (or when the employee left) |
| | 9017 | ATTRIBUTE FUNCTION QUALIFIER | Must contain | ZZZ | ZZZ = qualifier for Mutually defined |
| | C955 | ATTRIBUTE TYPE | Not used | | |
| | C956 | ATTRIBUTE DETAILS | | | |
| | 9019 | Attribute, coded | Must contain | 2 | 2 = qualifier for 'Week 1 / Month 1' Indicator |
| | 1131 | Code list qualifier | Must contain | 4 | |
| | 3055 | Code list agency | Must contain | IR | |
| | 9018 | Attribute | Must contain | Tax Code Week1/Month1 indicator - format Y | See Validation Rule 56 |
| EDIFACT example: ATT+ZZZ++2:4:IR:Y' | | | | | |
| Further Employment Details may be included here up to a maximum of 15 iterations | | | | | |
| Further Employee Details (LIN Groups) may be included here | | | | | |
| UNS – Section Identifier | | | Mandatory Segment | | |
| | 0081 | Section Identifier | Must contain | S | S = qualifier for Summary |
| EDIFACT example: UNS+S' | | | | | |

Message Implementation Guidelines for PAYE Earlier Year Update (2013/14)

| Segment Name | EDIFACT Element Name | Segment Content | Contents | | Notes |
|--|----------------------|-------------------------------|-------------------|--|---|
| CNT - Control | | | Mandatory Segment | | |
| | C270 | CONTROL | | | |
| | 6069 | Control qualifier | Must contain | 2 | 2 = qualifier for Number of Line Items in message |
| | 6066 | Control value | Must contain | Number of LIN through ATT segments (same as Number of Employees) – format n..8 | |
| EDIFACT example: CNT+2:1' | | | | | |
| UNT – Message Trailer | | | Mandatory Segment | | |
| | 0074 | NUMBER OF SEGMENTS | Must contain | Message segment count including UNH and UNT segments, format n..10 | |
| | 0062 | MESSAGE REFERENCE NUMBER | Must contain | Same value as in UNH, format an..14 | |
| EDIFACT example: UNT+79+1' | | | | | |
| Further EYU13 Messages (UNH through UNT segments) may be included here | | | | | |
| UNZ – Interchange Trailer | | | Mandatory Segment | | |
| | 0036 | INTERCHANGE CONTROL COUNT | Must contain | count of messages within interchange, e.g. 1 – format n..6 | |
| | 0020 | INTERCHANGE CONTROL REFERENCE | Must contain | same value as 0020 in UNB – format n..14 | |
| EDIFACT example: UNZ+1+2' | | | | | |

6.2.1. EDIFACT : EYU14 Example

An example of an EYU14 EDIFACT message can be found on the HMRC Website at: <http://www.hmrc.gov.uk/softwaredevelopers/rti/edi-rti.htm>

7. PROCESSING CHECKLIST

7.1. Registration

All EDI users, whether Software Providers, Employers or Bureaux, must register with HMRC before they can test their data. It is recommended that you register your intent to use EDI as soon as possible after commencing development.

Online Services Helpdesk: 0300 200 3600 or helpdesk@ir-efile.gov.uk

7.2. Character Set

All EDI data submitted to HMRC must be within the defined character sets.

The character sets which must be used within the message are given in Appendix A.

Any message containing characters outside the specific character sets, e.g. ~ | \$ will be rejected before reaching the HMRC system. The error will be reported to the sender.

7.3. Interchange Control References

Each interchange sent by an Employer/Bureau must contain a unique "Interchange Control Reference" (ICR) in its header.

For EDIFACT submissions, the ICR is contained within the UNB segment; for GFF submissions, the ICR is contained within the 4* header.

If any problems occur with the transmission or validation of the data prior to it being processed by HMRC, the ICR will be used to reference the interchange that has failed.

It is essential that the ICR is unique for each EYU14 interchange sent. It is recommended that the ICR is sequential and increments, i.e. maintain one sequence of ICRs for the messages within this group.

7.4. Monetary Values

All monetary values must be provided in pence.

7.5. Monetary Values – TAX/MOA Pairing

All monetary values must be provided in a pairing of TAX/MOA records or segments.

The TAX record/segment provides the meaning of the monetary amount provided in the following MOA record/segment.

7.6. GFF Record Lengths

All GFF records must be the correct length as defined in Section 6.1.

A common problem is that the GFF records are the incorrect length, this often occurs when a previously unused optional record is produced. As part of your development please ensure all record lengths, especially optional records, are correct.

7.7. Sending Data to HMRC

The Employer/Bureau is responsible for ensuring transmitted data has been received either by the Value Added Network (VAN) or intermediary communication provider.

This is normally achieved by either checking reports issued by the VAN or setting your communication software to request End to End Responses (EERPs) and checking they are successful.

7.8. Error Correction

The Employer/Bureau is responsible for correcting and resubmitting data reported as faulty. See Sections 2.5 and 2.6 for details of Acknowledgement Reports generated by the EDI Translation Service and HMRC.

Acknowledgement Reports from the EDI Translation Service will quote the Interchange Control Reference (ICR), and also the PAYE Scheme.

Acknowledgement Reports from HMRC will quote the PAYE Scheme.

In both cases the Employer/Bureau will then be expected to correct and resubmit the data.

Message Implementation Guidelines for PAYE Earlier Year Update (2013/14)

APPENDIX A – EYU14 CHARACTER SETS

Any message containing characters outside of the following character sets will be classed as an error and will be reported to the sender. e.g. ~ |

N.B. EDIFACT uses the characters + : ? and ' to identify the position of the business data in the segment and consequently the meaning of the data.

The ? is used as a release character immediately preceding one of the characters ' + : ? to restore their normal meaning, e.g. O?'CONNOR means O'CONNOR.

| | | <i>Employer Name</i> | <i>Employer PAYE Reference, Address Line, Foreign Country & Payroll Id</i> | <i>Title</i> | <i>Surname, Forename & Second Forename</i> | <i>UK Postcode</i> |
|--------------------------------|---------------|----------------------|--|--------------|--|--------------------|
| Character / Set | | Set A | Set B | Set C | Set D | Set E |
| Letters, lower case | a to z | Y | Y | Y | Y | Y |
| Letters, upper case | A to Z | Y | Y | Y | Y | Y |
| Numerals | 0 to 9 | Y | Y | | | Y |
| Space character | | Y | Y | Y | Y | Y |
| Full Stop | . | Y | Y | Y | | |
| Comma | , | Y | Y | | | |
| Hyphen/minus sign | - | Y | Y | Y | Y | |
| Opening parenthesis | (| Y | Y | | | |
| Closing parenthesis |) | Y | Y | | | |
| Oblique stroke (forward slash) | / | Y | Y | | | |
| Equals sign | = | Y | Y | | | |
| Exclamation mark | ! | Y | Y | | | |
| Quotation Mark | " | Y | Y | | | |
| Percentage sign | % | Y | Y | | | |
| Ampersand | & | Y | Y | | | |
| Asterisk | * | Y | Y | | | |
| Semi-colon | ; | Y | Y | | | |
| Less than sign | < | Y | Y | | | |
| Greater than sign | > | Y | Y | | | |
| Apostrophe | ' | Y | Y | Y | Y | |
| Plus sign | + | Y | Y | | | |
| Colon | : | Y | Y | | | |
| Question Mark | ? | Y | Y | | | |
| Backslash | \ | Y | | | | |
| Open square bracket | [| Y | | | | |
| Close square bracket |] | Y | | | | |
| "At" sign | @ | Y | | | | |
| Dollar sign | \$ | Y | | | | |
| Number sign (Hash sign) | # | Y | | | | |
| Circumflex | ^ | Y | | | | |
| Opening braces | { | Y | | | | |
| Closing braces | } | Y | | | | |
| Underscore | _ | Y | | | | |

APPENDIX B – MODULUS 19 CALCULATION

The MODULUS 19 Check is used to confirm the validity of the **ECON / SCON** provided by the Employer. It cannot identify if any of the digits of the reference number provided are incorrect therefore it should not be used to amend the reference number in an attempt to provide the correct value.

The calculation used to confirm the validity of the supplied **ECON / SCON** is as follows:-

FIXED VALUE: **ECON** = 37 **SCON** = 51

ECON example:

To confirm the validity of **ECON E3101234D**, take the supplied digits of the reference number and multiply as follows -

| | | | | |
|--------------|---|----------|---|-----------|
| 3 | x | 8 | = | 24 |
| 1 | x | 7 | = | 7 |
| 0 | x | 6 | = | 0 |
| 1 | x | 5 | = | 5 |
| 2 | x | 4 | = | 8 |
| 3 | x | 3 | = | 9 |
| 4 | x | 2 | = | 8 |
| TOTAL | | | = | 61 |

+ FIXED VALUE = 37

NEW TOTAL = 98

DIVIDE BY 19 = 5 REMAINDER 3

The remainder figure is then checked against the table of Check Letters, detailed below, to confirm that the check letter is 'D'.

This check can only be used to confirm the validity of the ECON / SCON where the correct digits have been supplied.

Table of Check Letters

| Number | Check Letter |
|--------|--------------|
| 0 | A |
| 1 | B |
| 2 | C |
| 3 | D |
| 4 | E |
| 5 | F |
| 6 | H |
| 7 | J |
| 8 | K |
| 9 | L |

| Number | Check Letter |
|--------|--------------|
| 10 | M |
| 11 | N |
| 12 | P |
| 13 | Q |
| 14 | R |
| 15 | T |
| 16 | W |
| 17 | X |
| 18 | Y |

APPENDIX C – National Insurance Number Prefix Validation

National Insurance Number Prefixes Validation Rules

1. The characters D, F, I, Q, U and V are not used as either the first or second letter of a NINO prefix.
2. The letter O is not used as the second letter of a NINO prefix.
3. Prefixes BG, GB, KN, NK, NT, TN and ZZ are not to be used.