



29 December 2014

Year: 2014

Week: 52

In This Issue:

- Key messages.
- Syndromic indicators at a glance.
- Data summary.
- Indicators by syndrome.
- Cold/flu.
- Fever.
- Cough.
- Difficulty Breathing.
- Sore throat.
- Diarrhoea.
- Vomiting.
- Eye problems.
- Introduction to charts.
- Notes and further information.
- Acknowledgements.

Key messages

Data to: 28/12/2014

NHS 111 calls for respiratory indicators continued to increase during week 52 (figures 2, 4, 5, 6).

Cold/flu calls increased across all age groups except the 5-14 years (figure 2a). Cough calls increased across all age groups (figure 4a).

A Cold Watch System operates in England from 1 November to 31 March each year. As part of the Public Health England Cold Weather Plan for England the PHE Real-time Syndromic Surveillance team will be monitoring the impact of cold weather on syndromic surveillance data during this period.
Cold weather alert level (current reporting week): **Levels 2/3 – Alert and readiness/ cold weather action**
<http://www.metoffice.gov.uk/weather/uk/coldweatheralert/>

Syndromic indicators at a glance:

Indicator	Trend	Level *
Cold/flu	Increasing	Above baseline levels
Fever	Decreasing	Below baseline levels
Cough	Increasing	Above baseline levels
Difficulty breathing	Increasing	Above baseline levels
Sore throat	Increasing	
Diarrhoea	No trend	Similar to baseline levels
Vomiting	Decreasing	Below baseline levels
Eye problems	No trend	Similar to baseline levels

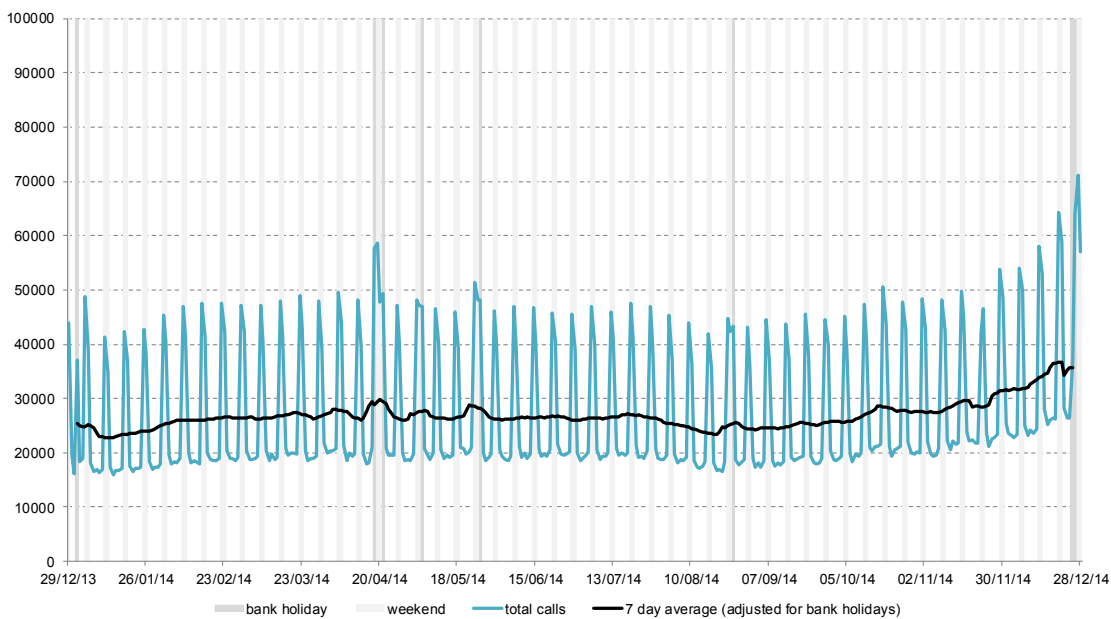
*Since week 47 2014 new baselines have been introduced for comparison with previous years. Baselines use historical data from the NHS Direct surveillance system to estimate seasonal trend but with levels adjusted to reflect changes since the switch to using NHS 111 data in September 2013.

Data summary:

Year	Week	Total calls
2014	52	310,277

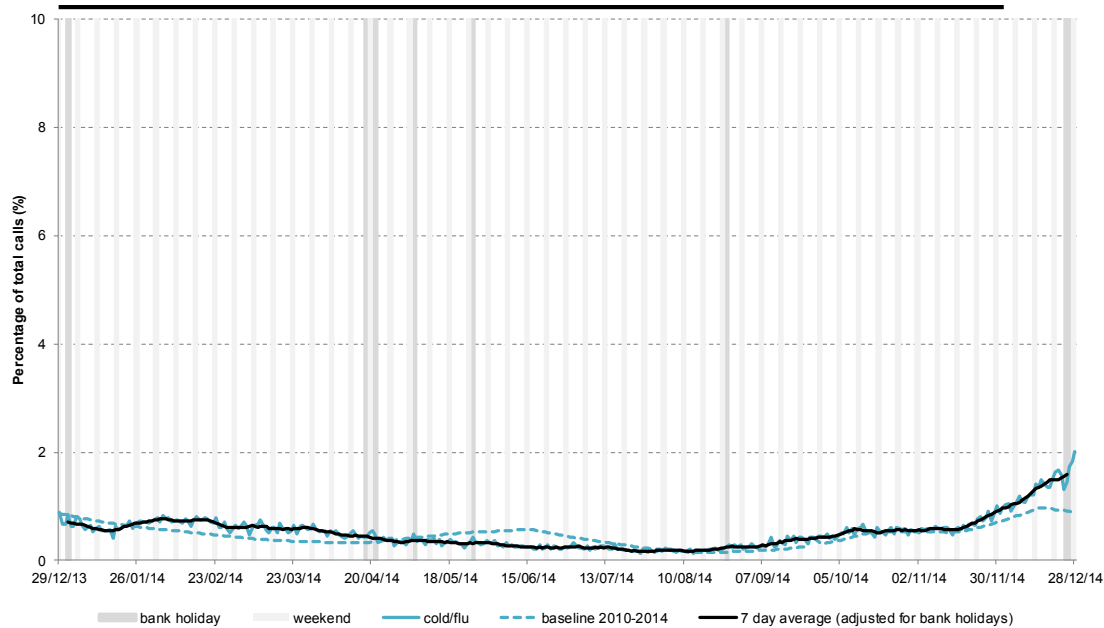
1: Total calls.

The total number of syndromic calls recorded each day by NHS 111.



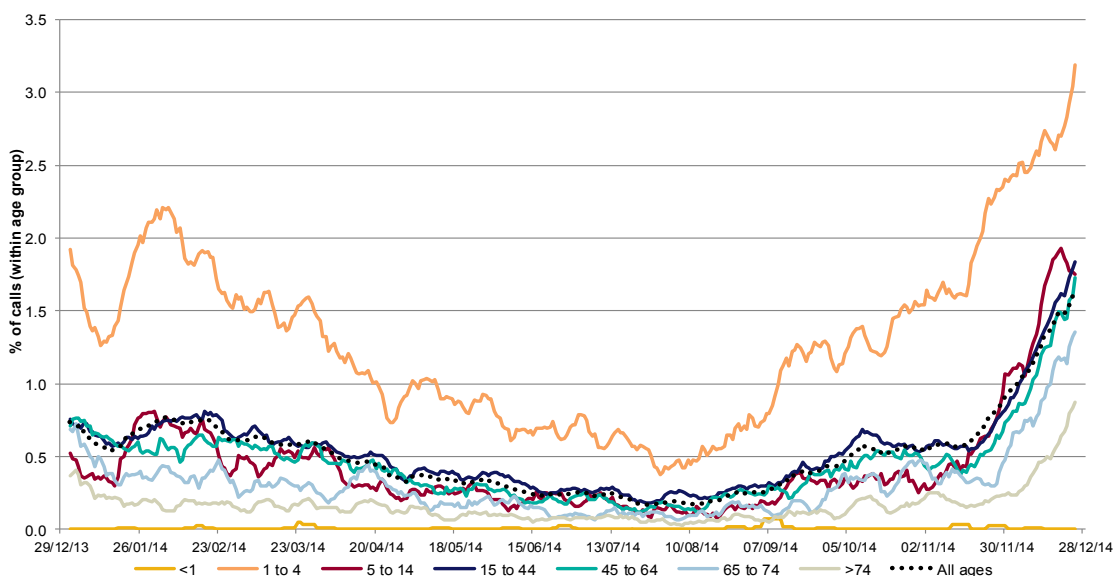
2: Cold/flu

Daily 'cold/flu' calls as a percentage of total calls. Baselines are constructed from historical data since 2010, including data from NHS111 and NHS Direct.



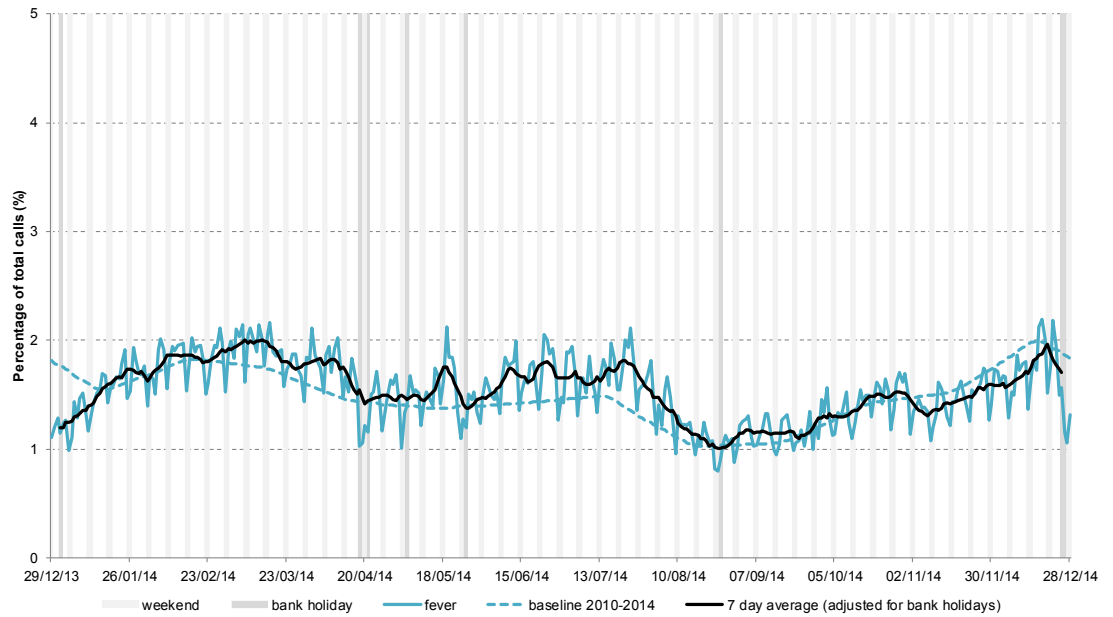
2a: Cold/flu by age group

Cold/flu calls as a percentage of total calls within each age group, shown as a 7 day moving average.



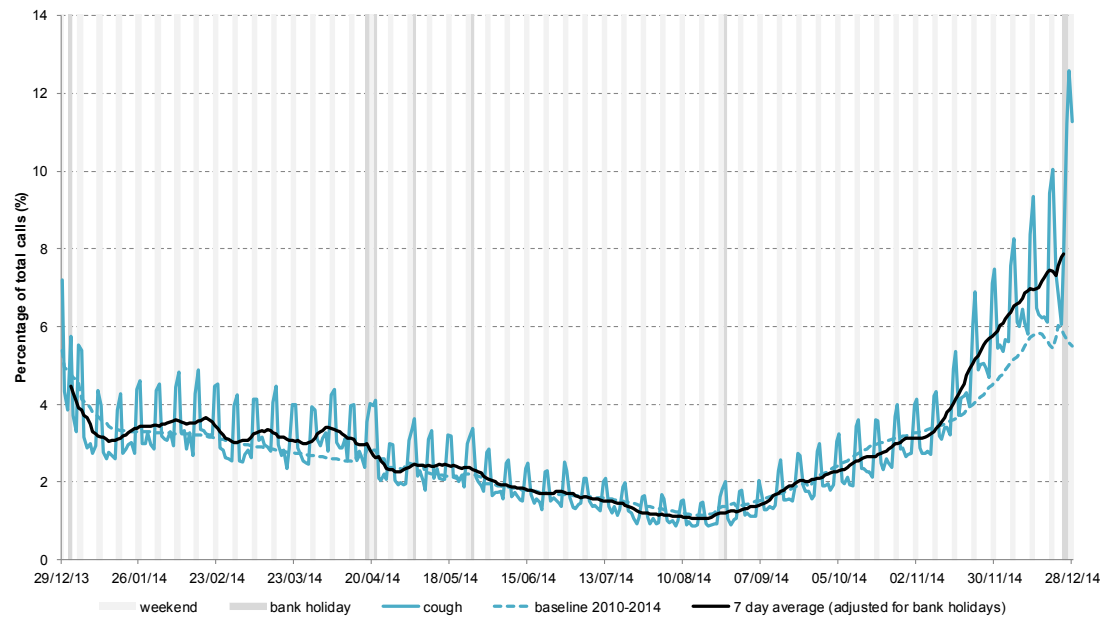
3: Fever

Daily 'fever' calls as a percentage of total calls. Baselines are constructed from historical data since 2010, including data from NHS111 and NHS Direct.



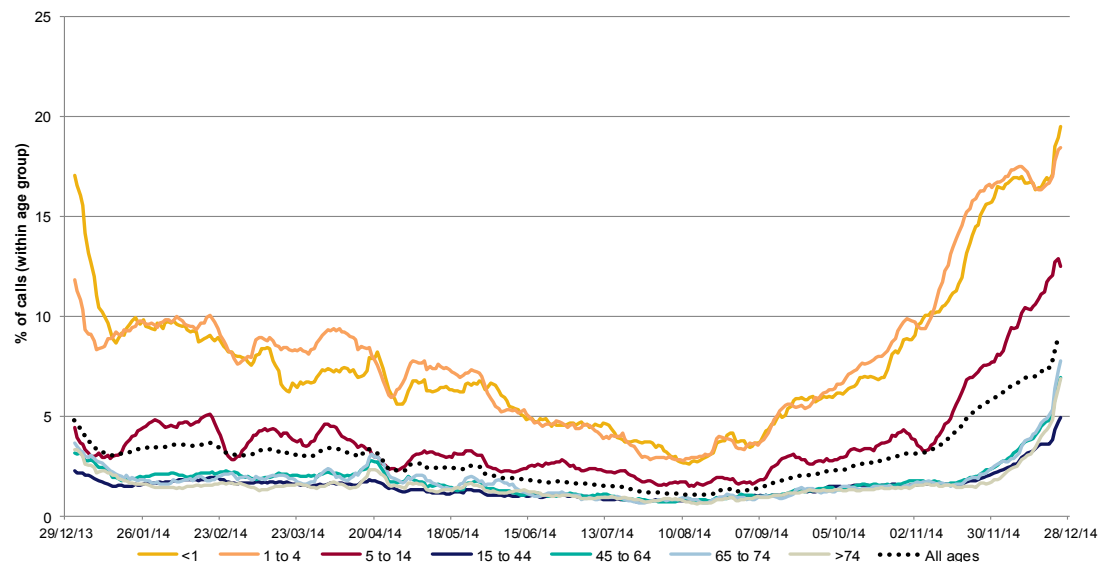
4: Cough

Daily 'cough' calls as a percentage of total calls. Baselines are constructed from historical data since 2010, including data from NHS111 and NHS Direct.



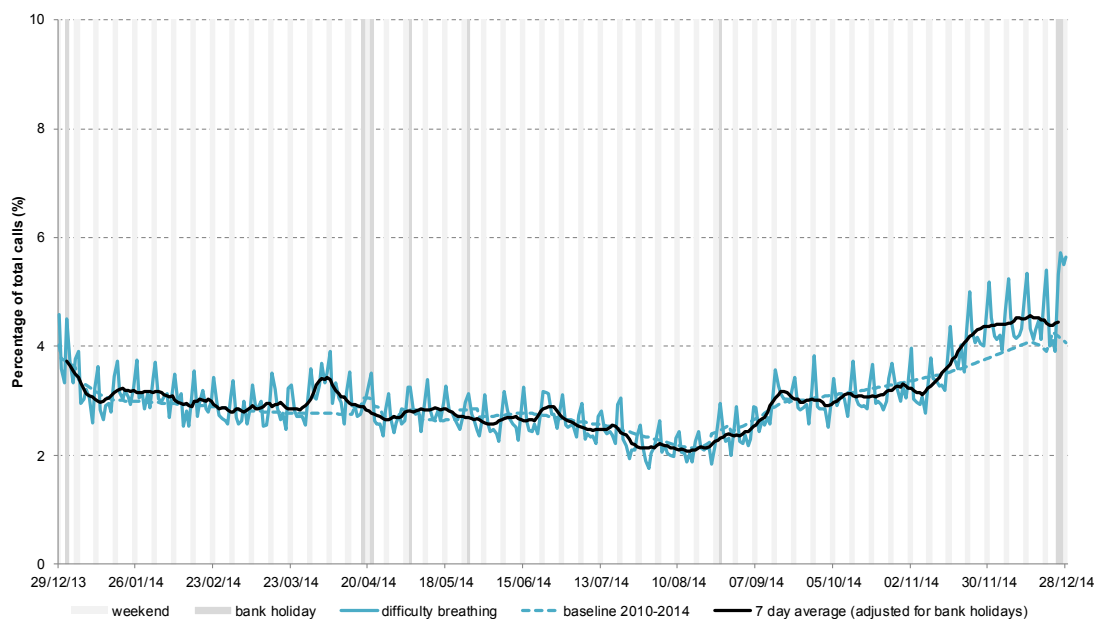
4a: Cough by age group

Cough calls as a percentage of total calls within each age group, shown as a 7 day moving average.



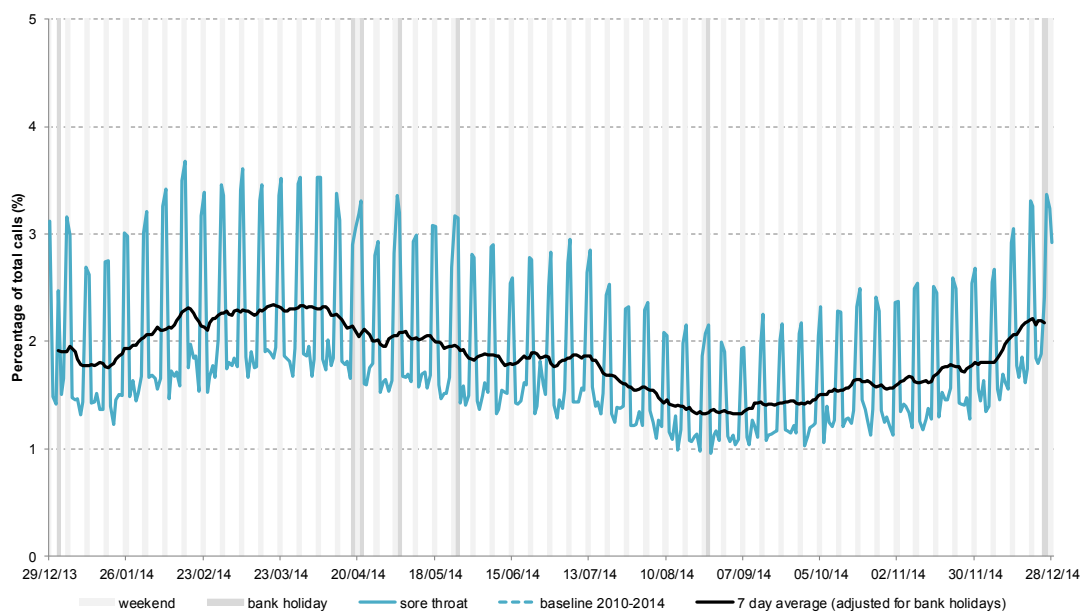
5: Difficulty breathing

Daily 'difficulty breathing' calls as a percentage of total calls. Baselines are constructed from historical data since 2010, including data from NHS111 and NHS Direct.



6: Sore throat

Daily 'sore throat' calls as a percentage of total calls. Baselines, constructed from historical data since 2010 and including data from NHS Direct and NHS111, are under construction and will be included for this indicator shortly.

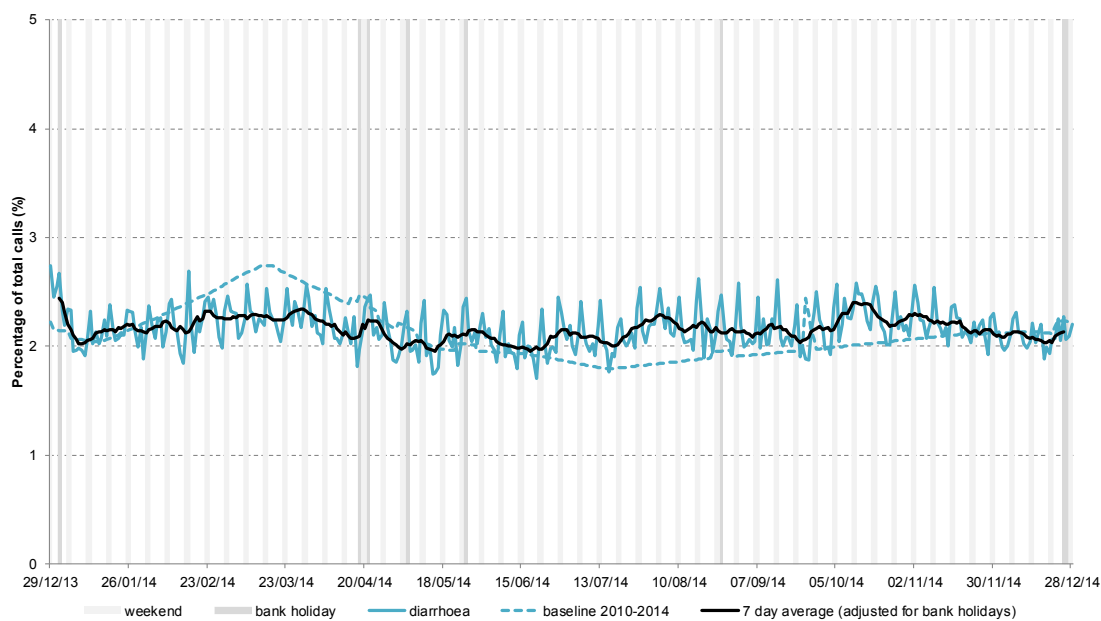


7: Intentionally left blank

Intentionally left blank.

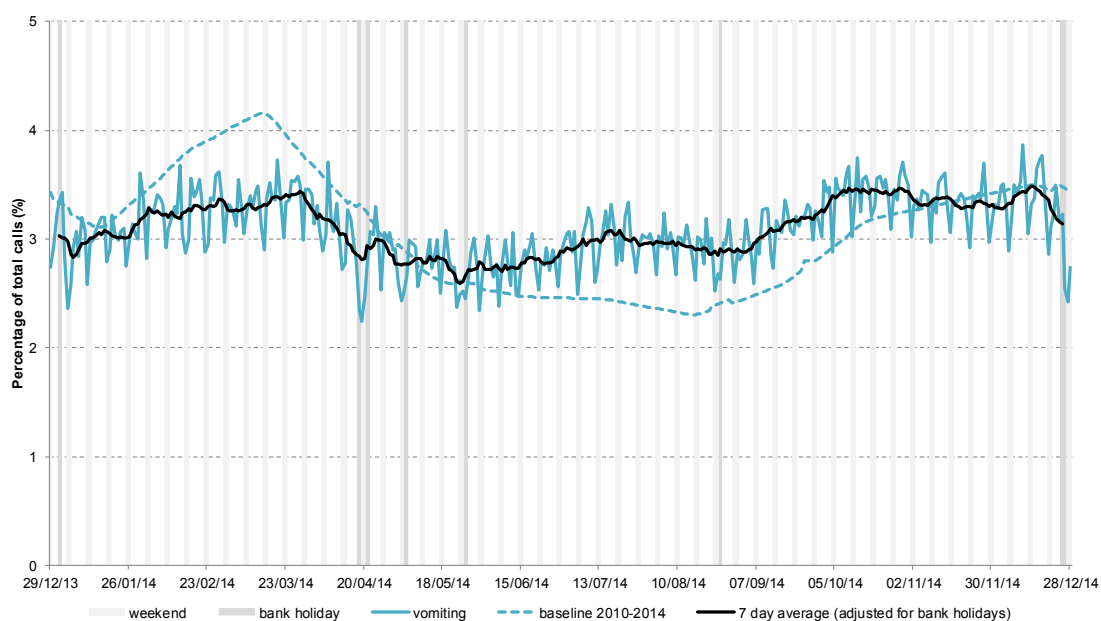
8: Diarrhoea

Daily 'diarrhoea' calls as a percentage of total calls. Baselines are constructed from historical data since 2010, including data from NHS111 and NHS Direct.



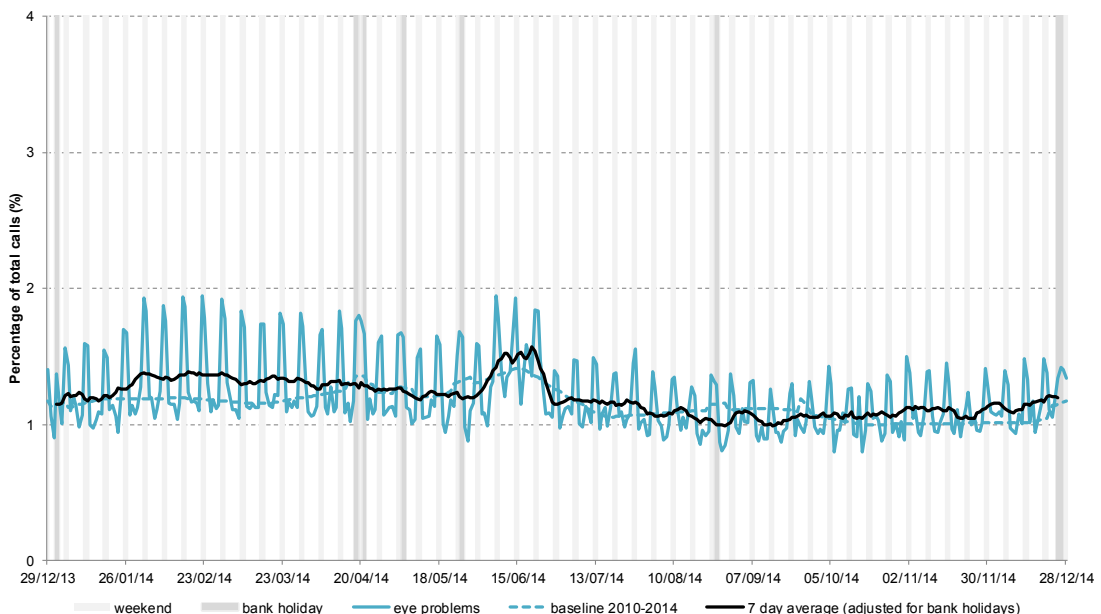
9: Vomiting

Daily 'vomiting' calls as a percentage of total calls. Baselines are constructed from historical data since 2010, including data from NHS111 and NHS Direct.



10: Eye problems

Daily 'eye problems' calls as a percentage of total calls. Baselines are constructed from historical data since 2010, including data from NHS111 and NHS Direct.



Introduction to charts:

- Weekends and bank holidays are marked by vertical **grey** lines (bank holidays **darker grey**).
- A 7-day moving average (adjusted for bank holidays) is overlaid on the daily data reported in each chart, unless specified.
- Baselines are constructed using historical data, including data from both NHS111 and the NHS Direct syndromic system (which was replaced by NHS 111 data in September 2013). Seasonal trends reflect the average over past years, with levels adjusted to reflect differences between NHS 111 and NHS Direct data.
- This new syndromic surveillance system is still under development and further analyses at PHE Centre level will be included in future bulletins.

Notes and further information:

Further information about NHS 111 can be found at:

<http://www.nhs.uk/NHSEngland/AboutNHSservices/Emergencyandurgentcareservices/Pages/NHS-111.aspx>

The Remote Health Advice Syndromic Surveillance bulletin can also be downloaded from the PHE Real-time Syndromic Surveillance website which also contains more information about syndromic surveillance:

<https://www.gov.uk/government/collections/syndromic-surveillance-systems-and-analyses>

Acknowledgements:

We are grateful to NHS 111 and to HSCIC for their assistance and support in providing the anonymised call data that underpin the Remote Health Advice Syndromic Surveillance System.

Remote Health Advice Syndromic Surveillance System Bulletin.

Produced by: PHE Real-time Syndromic Surveillance Team
6th Floor, 5 St Philip's Place, Birmingham, B3 2PW

Tel: 0344 225 3560 > Option 4 > Option 2 **Fax:** 0121 236 2215

Web: <https://www.gov.uk/government/collections/syndromic-surveillance-systems-and-analyses>