



12 November 2014

Year: 2014 Week: 45

In This Issue:

- Key messages.
- Diagnostic indicators at a glance.
- GP practices and denominator population.
- National syndromic indicators.
- Notes and further information.
- Appendix.

Key messages

Data to: 09 November 2014

Nothing new to report.

Respiratory indicators including upper and lower respiratory tract infections (figures 1 and 4) and influenza-like illness (figure 2) remained stable during week 45 and within seasonally expected levels.

A Cold Watch System operates in England from 1 November to 31 March each year. As part of the Public Health England Cold Weather Plan for England the PHE Real-time Syndromic Surveillance team will be monitoring the impact of cold weather on syndromic surveillance data during this period. Cold weather alert level (current reporting week): **Level 1 – Winter preparedness and action**
<http://www.metoffice.gov.uk/weather/uk/coldweatheralert/>

Diagnostic indicators at a glance:

Indicator	Trend	Level
Upper respiratory tract infection	no trend	similar to baseline levels
Influenza-like illness	no trend	similar to baseline levels
Pharyngitis	no trend	above baseline levels
Lower respiratory tract infection	increasing	above baseline levels
Pneumonia	no trend	similar to baseline levels
Gastroenteritis	no trend	above baseline levels
Vomiting	no trend	similar to baseline levels
Diarrhoea	no trend	above baseline levels
Severe asthma	no trend	above baseline levels
Wheeze	no trend	above baseline levels
Allergic rhinitis	no trend	
Conjunctivitis	no trend	similar to baseline levels
Mumps	no trend	below baseline levels
Measles	no trend	similar to baseline levels
Rubella	no trend	similar to baseline levels
Pertussis	no trend	similar to baseline levels
Chickenpox	increasing	similar to baseline levels
Herpes zoster	no trend	above baseline levels
Cellulitis	no trend	above baseline levels
Impetigo	no trend	above baseline levels

GP practices and denominator population:

Year	Week	GP Practices Reporting**	Population size**
2014	45	4596	33.7 million

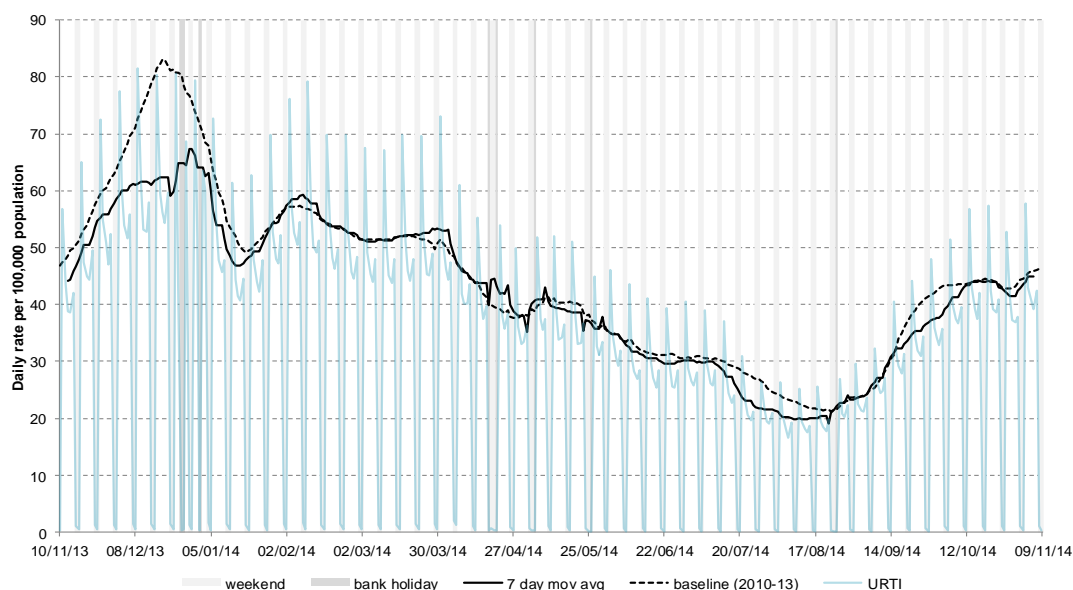
**based on the average number of practices and denominator population in the reporting working week.

12 November 2014

Year: 2014 Week: 45

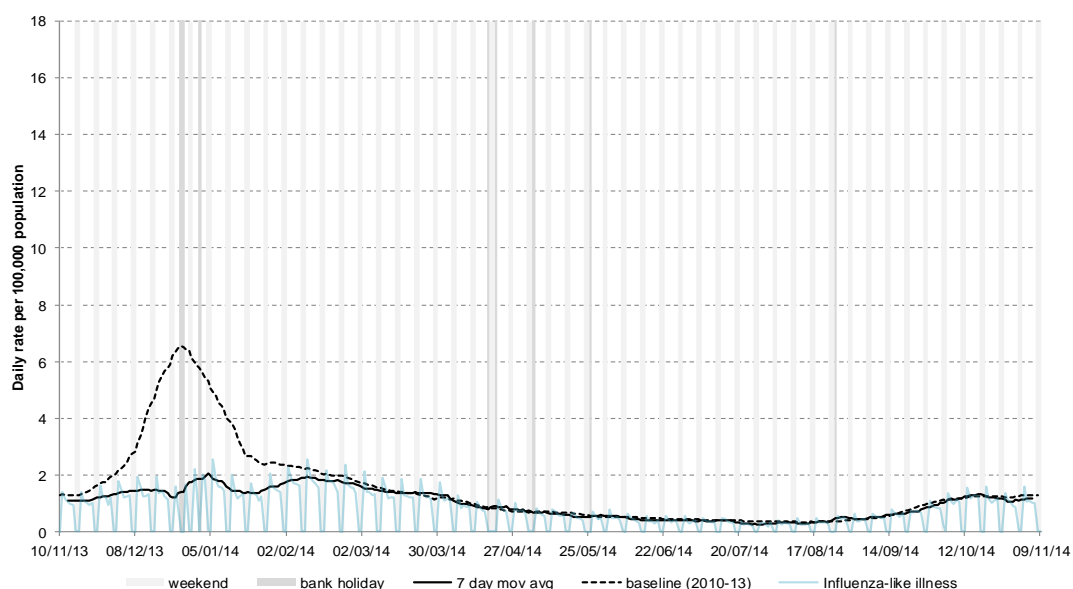
1: Upper respiratory tract infection (URTI)

Daily incidence rate (and 7-day moving average*) per 100,000 population (all England, all ages).



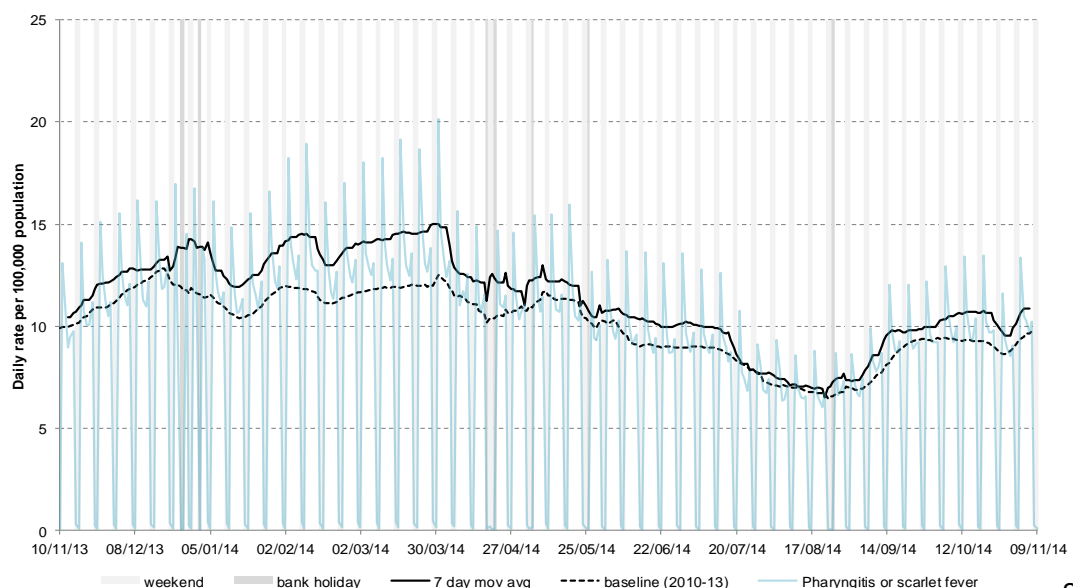
2: Influenza-like illness (ILI)

Daily incidence rates (and 7-day moving average*) per 100,000 population (all England, all ages).



3: Pharyngitis or scarlet fever

Daily incidence rates (and 7-day moving average*) per 100,000 population (all England, all ages).



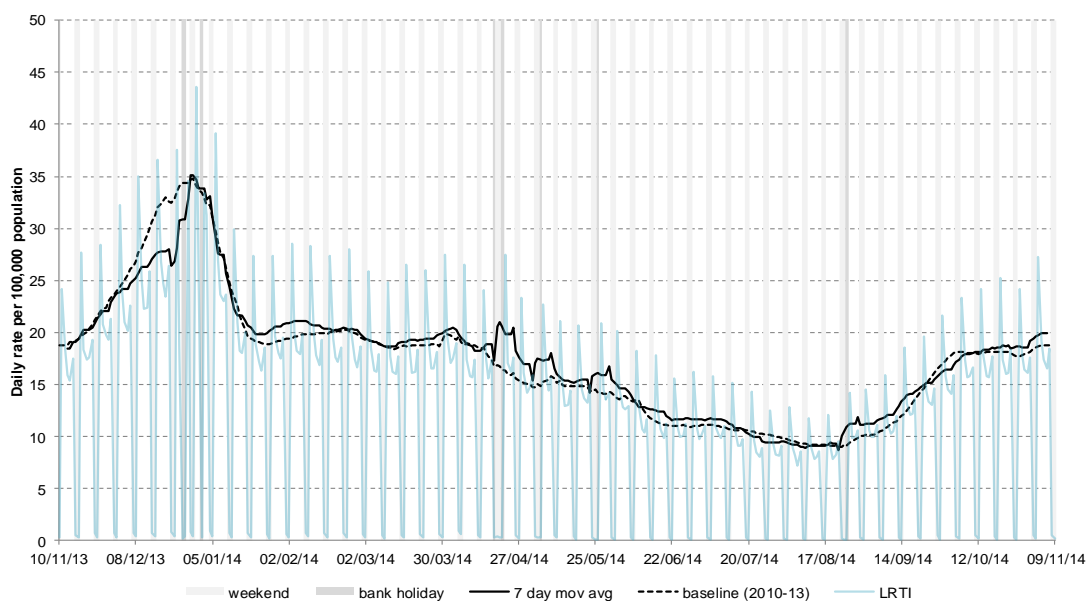
* 7-day moving average adjusted for bank holidays.

12 November 2014

Year: 2014 Week: 45

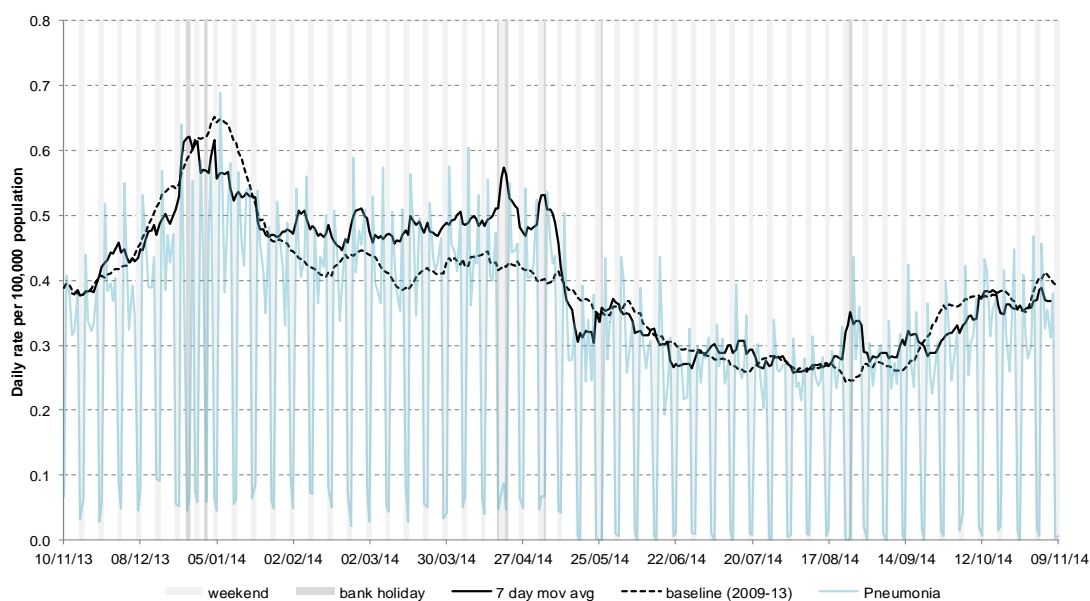
4: Lower respiratory tract infection (LRTI)

Daily incidence rate (and 7-day moving average*) per 100,000 population (all England, all ages).



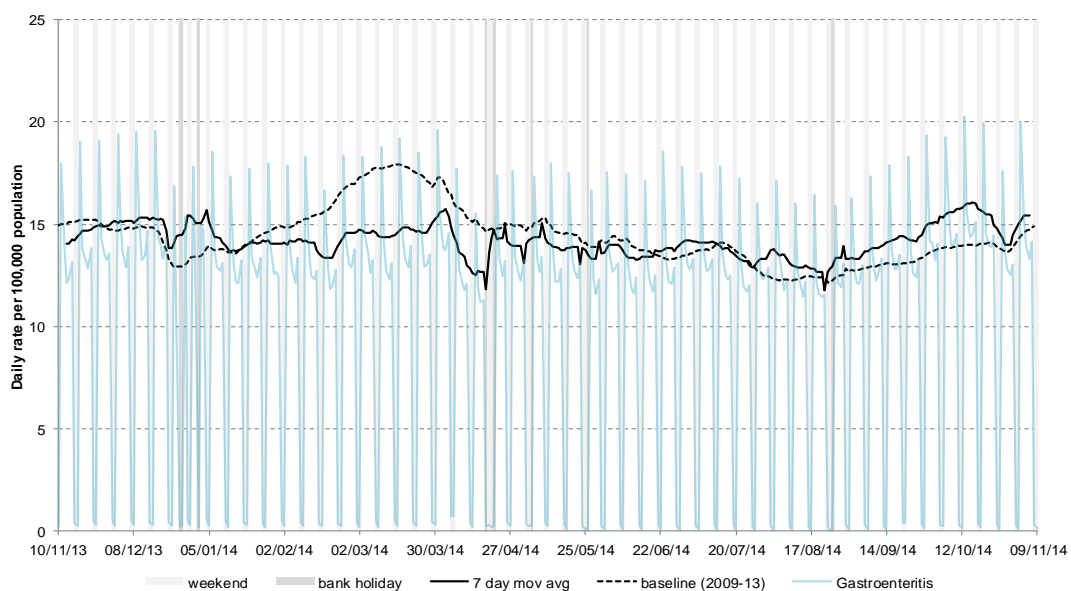
5: Pneumonia

Daily incidence rate (and 7-day moving average*) per 100,000 population (all England, all ages).



6: Gastroenteritis

Daily incidence rate (and 7-day moving average*) per 100,000 population (all England, all ages).



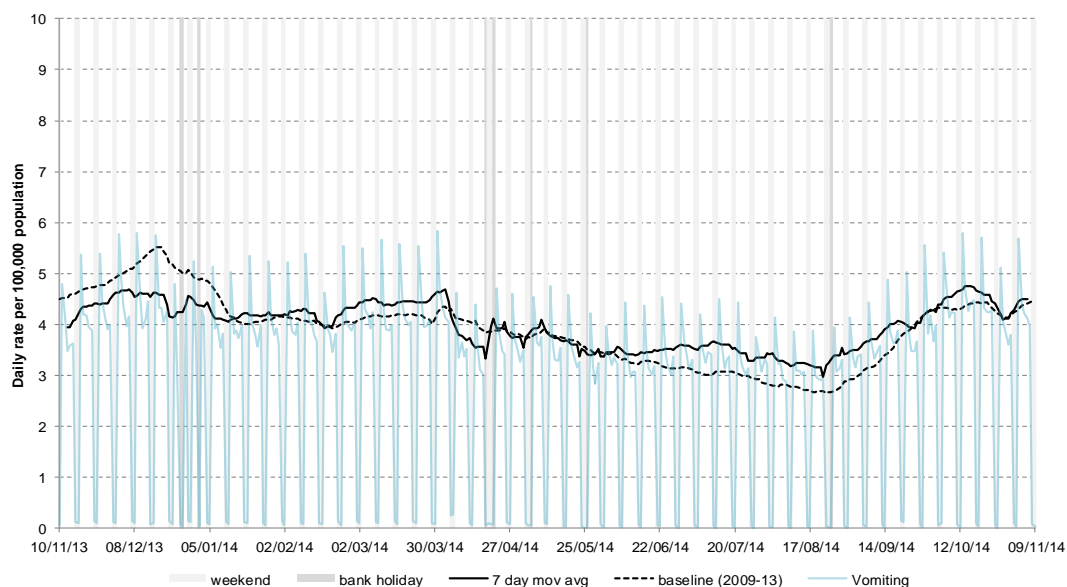
* 7-day moving average adjusted for bank holidays.

12 November 2014

Year: 2014 Week: 45

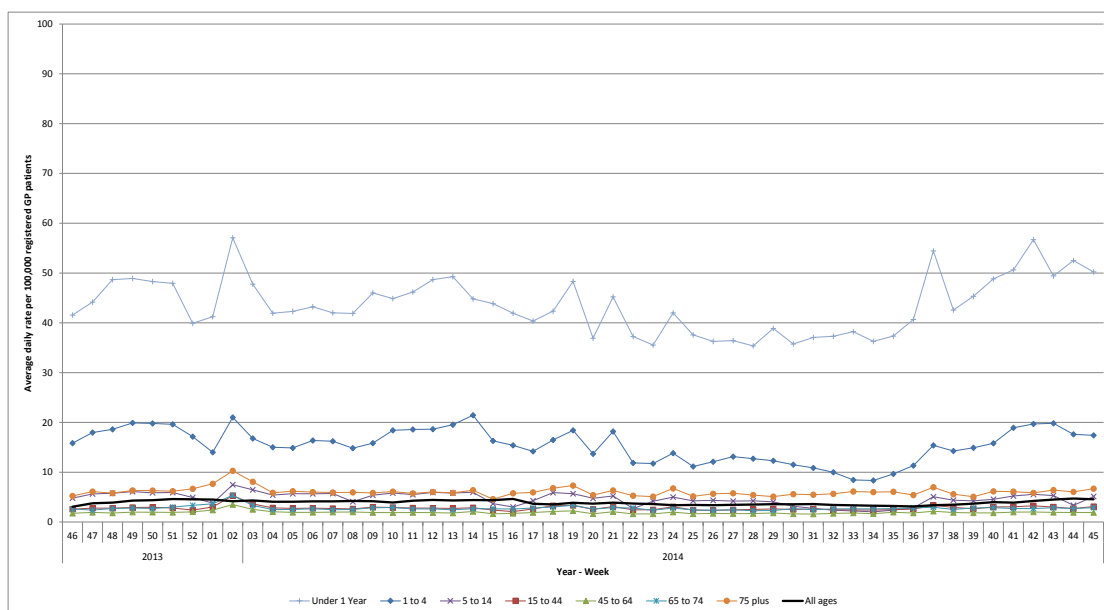
7: Vomiting

Daily incidence rate (and 7-day moving average*) per 100,000 population (all England, all ages).



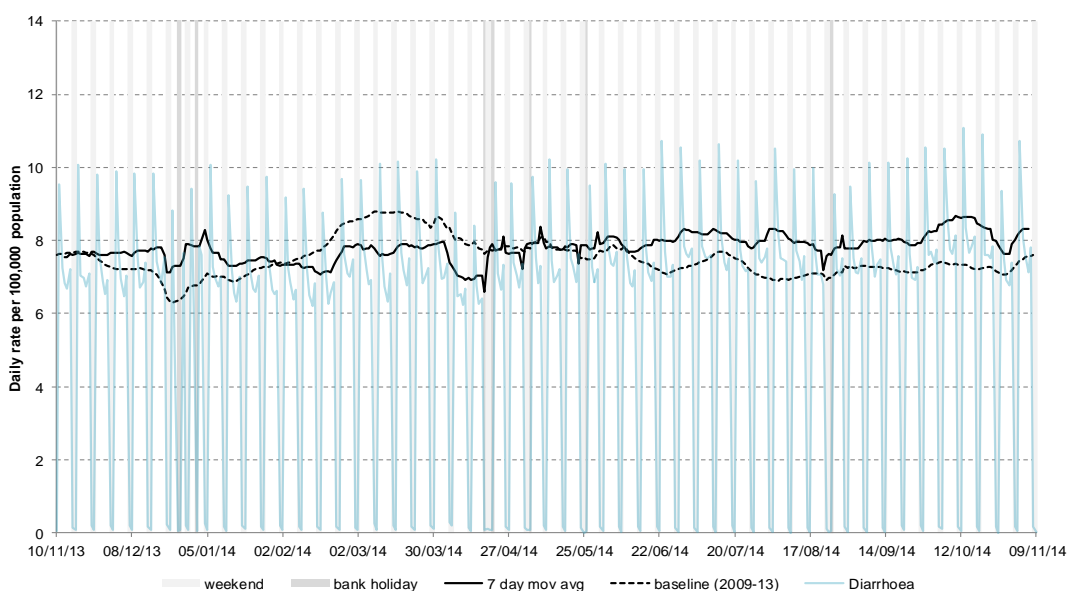
7a: Vomiting by age

Average daily incidence rate by week per 100,000 population (all England).



8: Diarrhoea

Daily incidence rate (and 7-day moving average*) per 100,000 population (all England, all ages).



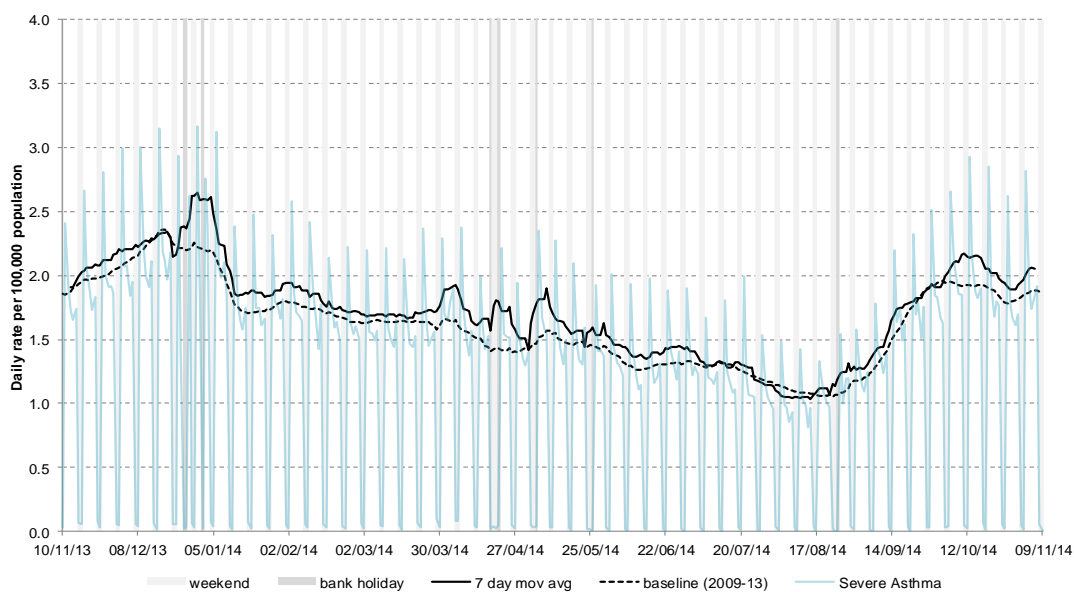
* 7-day moving average adjusted for bank holidays.

12 November 2014

Year: 2014 Week: 45

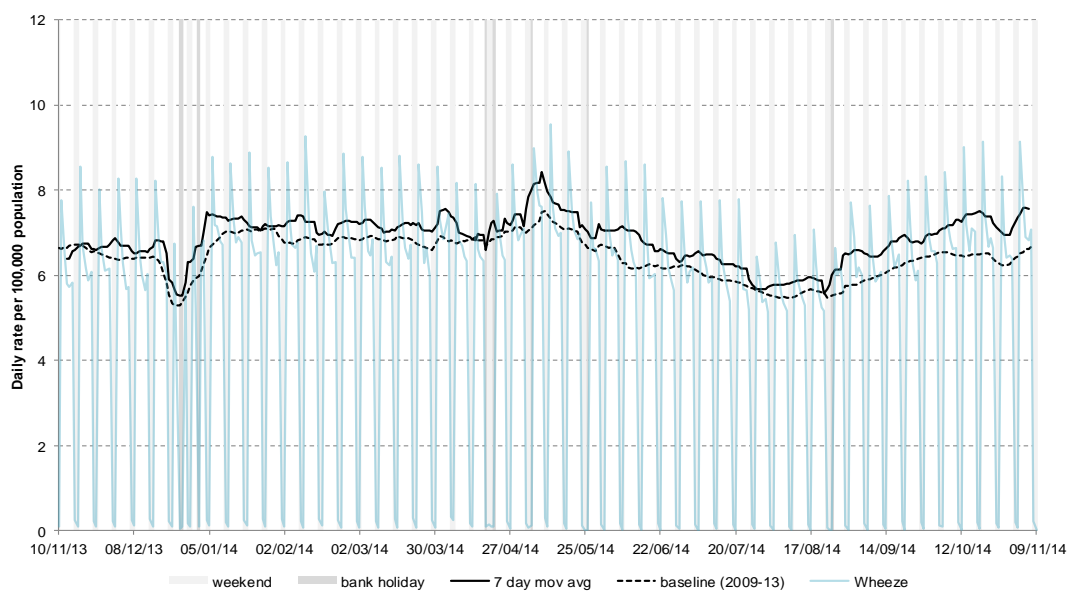
9: Severe asthma

Daily incidence rate (and 7-day moving average*) per 100,000 population (all England, all ages).



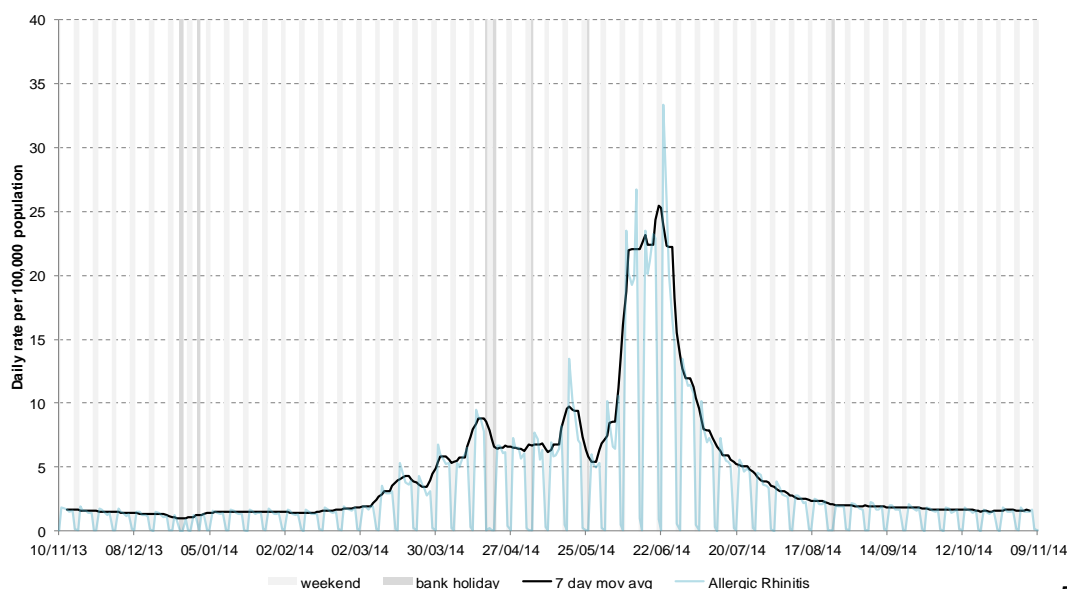
10: Wheeze

Daily incidence rate (and 7-day moving average*) per 100,000 population (all England, all ages).



11: Allergic rhinitis

Daily incidence rate (and 7-day moving average*) per 100,000 population (all England, all ages).



* 7-day moving average adjusted for bank holidays.

12 November 2014

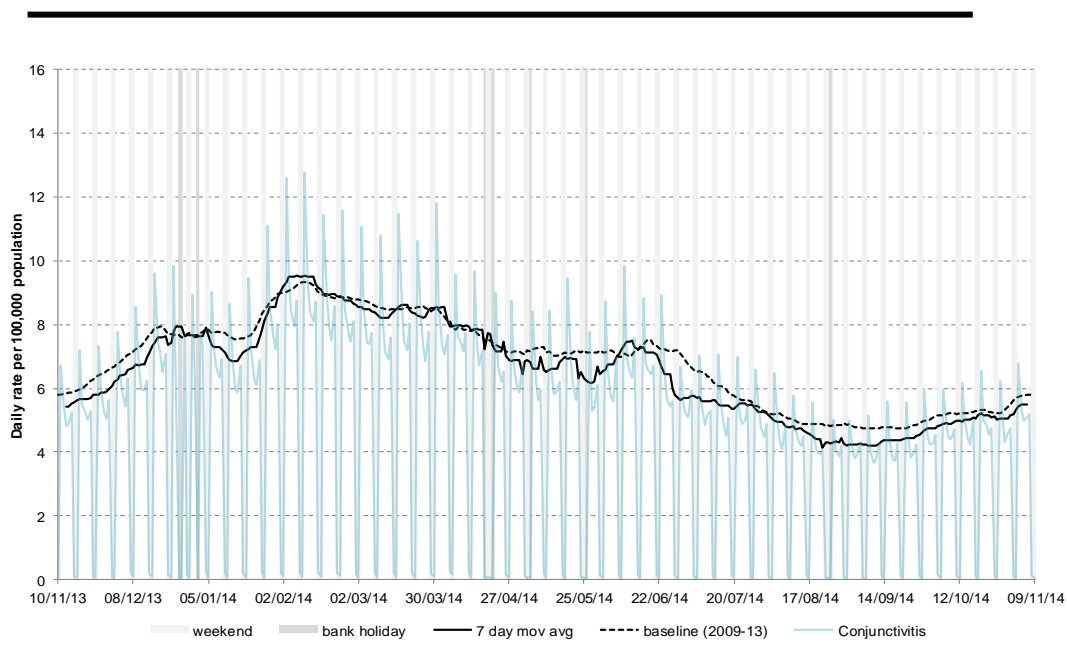
Year: 2014 Week: 45

12: Intentionally left blank

Intentionally left blank.

13: Conjunctivitis

Daily incidence rate (and 7-day moving average*) per 100,000 population (all England, all ages).



14: Intentionally left blank

Intentionally left blank.

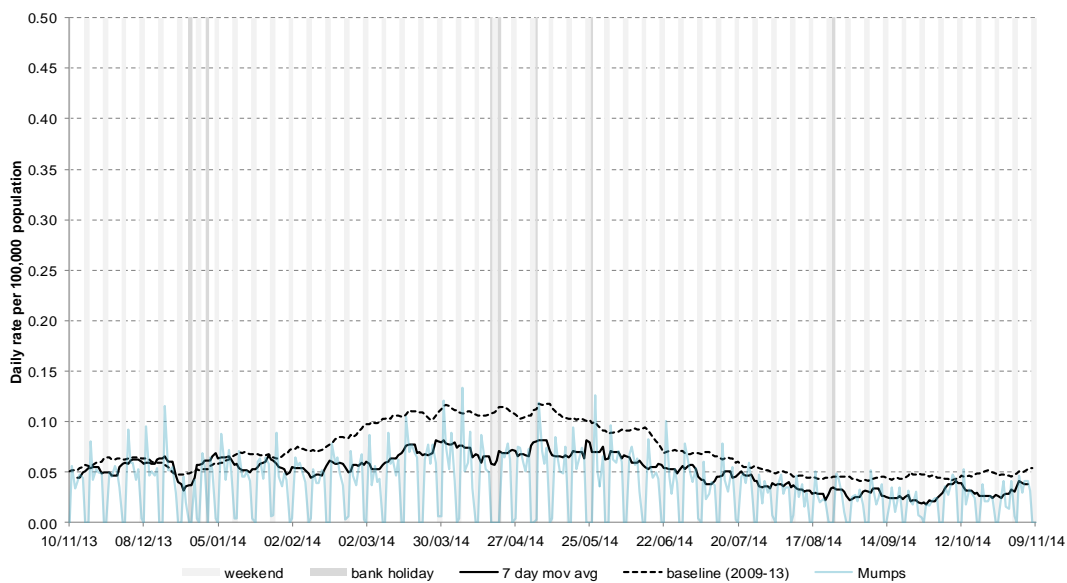
* 7-day moving average adjusted for bank holidays.

12 November 2014

Year: 2014 Week: 45

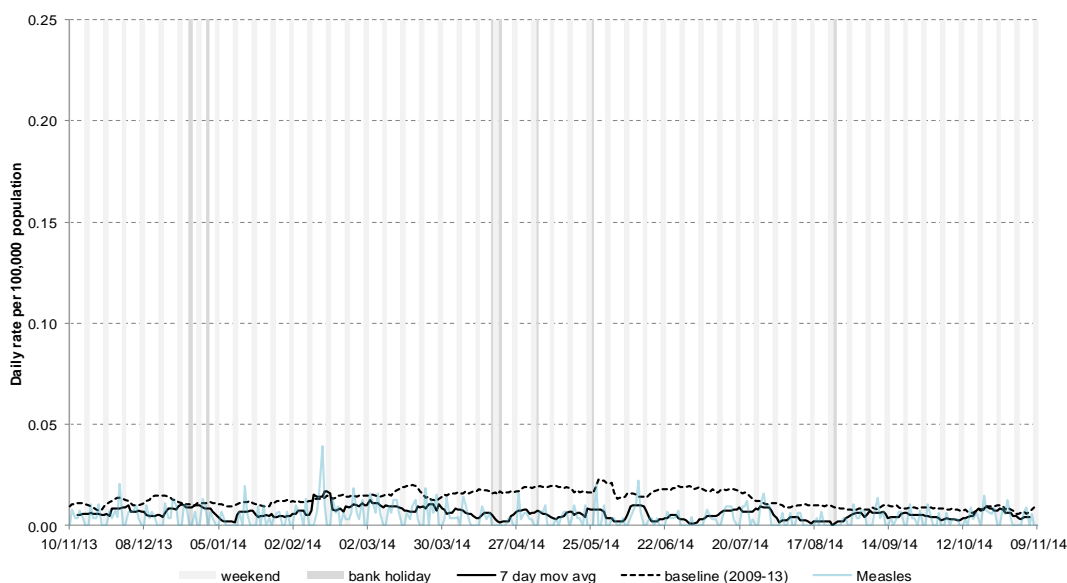
15: Mumps

Daily incidence rate (and 7-day moving average*) per 100,000 population (all England, all ages).



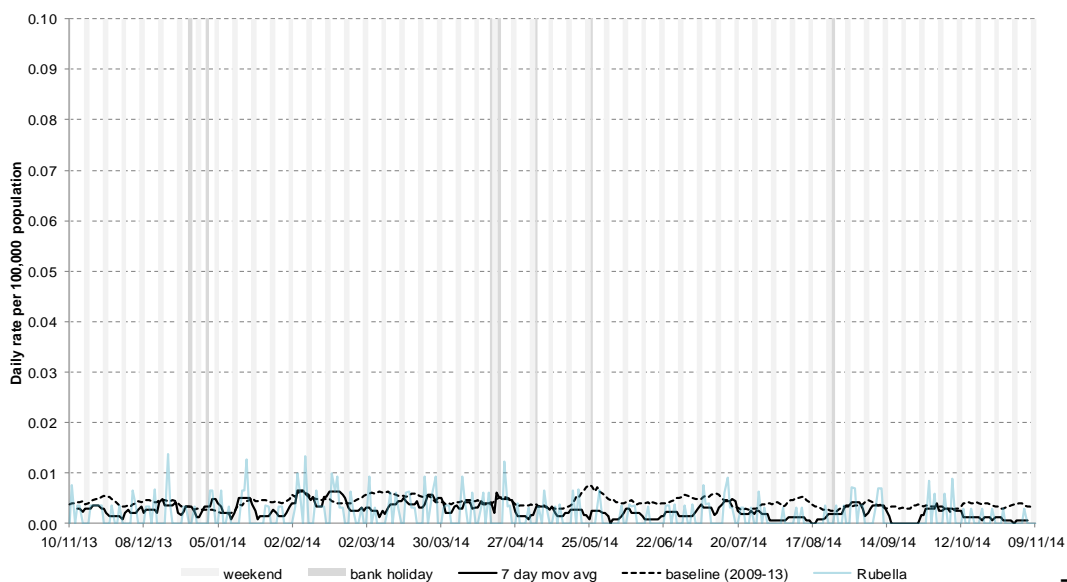
16: Measles

Daily incidence rate (and 7-day moving average*) per 100,000 population (all England, all ages).



17: Rubella

Daily incidence rate (and 7-day moving average*) per 100,000 population (all England, all ages).



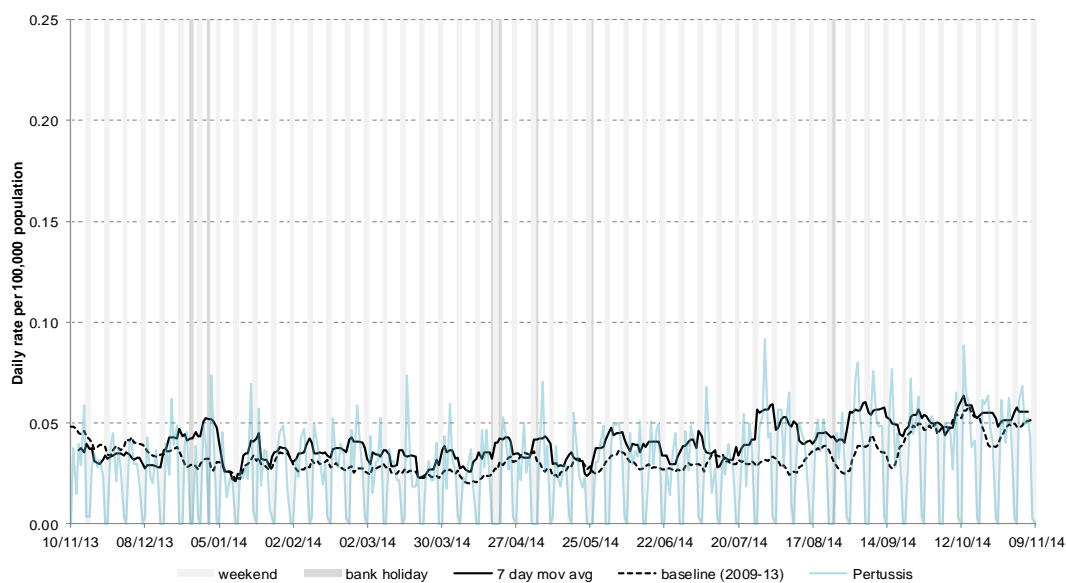
* 7-day moving average adjusted for bank holidays.

12 November 2014

Year: 2014 Week: 45

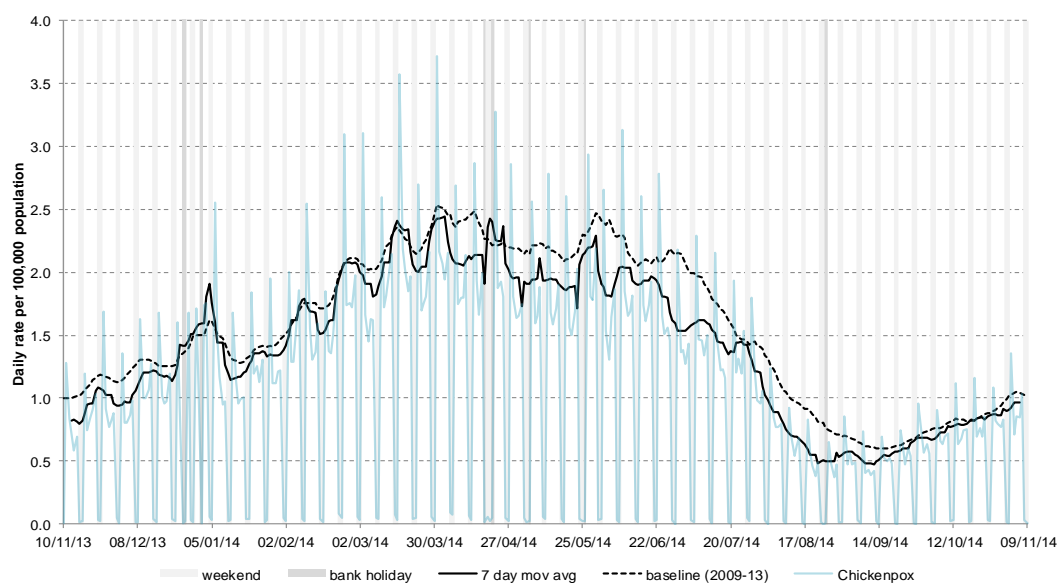
18: Pertussis

Daily incidence rate (and 7-day moving average*) per 100,000 population (all England, all ages).



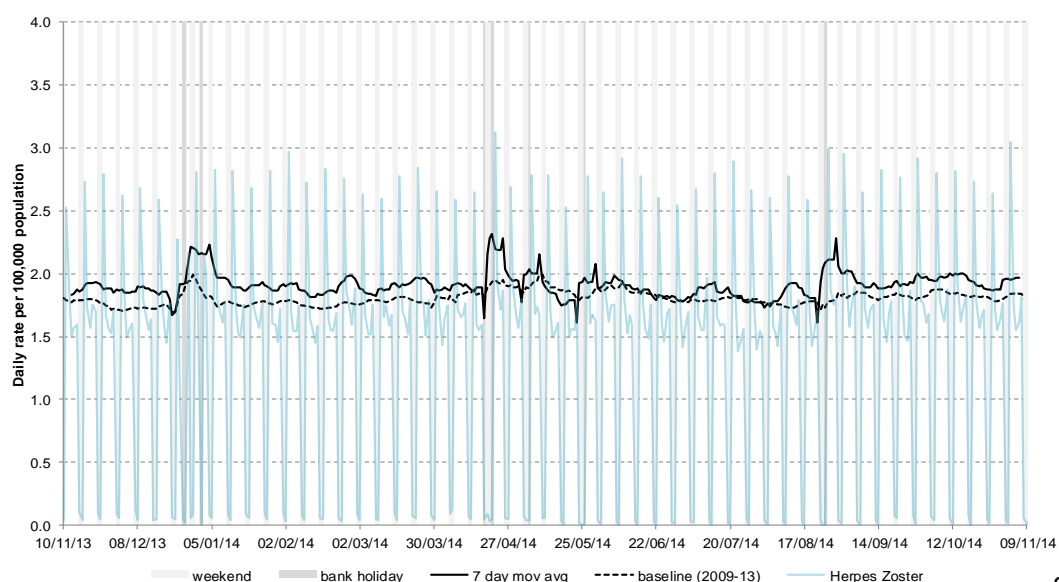
19: Chickenpox

Daily incidence rate (and 7-day moving average*) per 100,000 population (all England, all ages).



20: Herpes zoster

Daily incidence rate (and 7-day moving average*) per 100,000 population (all England, all ages).



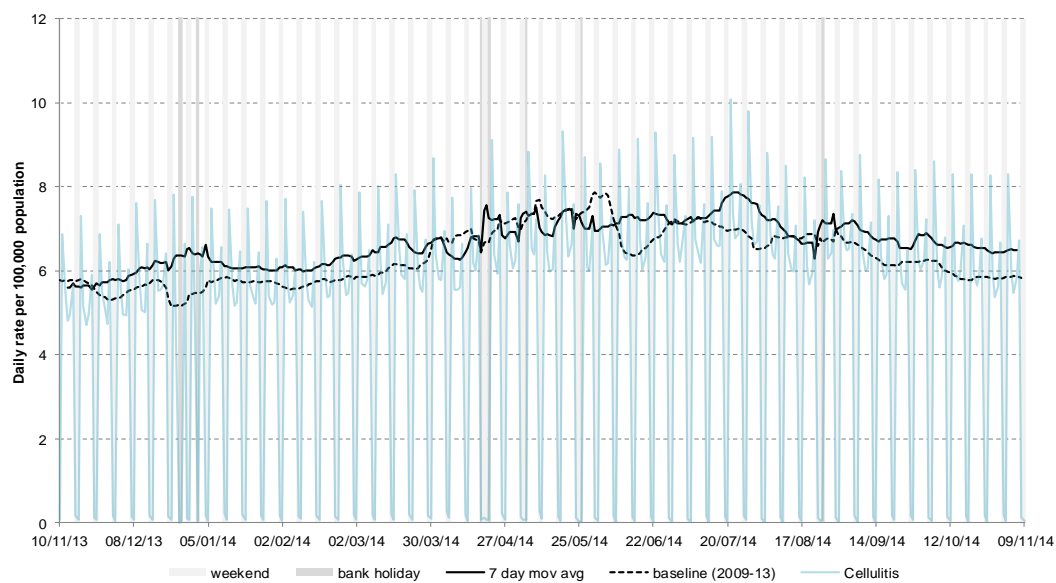
* 7-day moving average adjusted for bank holidays.

12 November 2014

Year: 2014 Week: 45

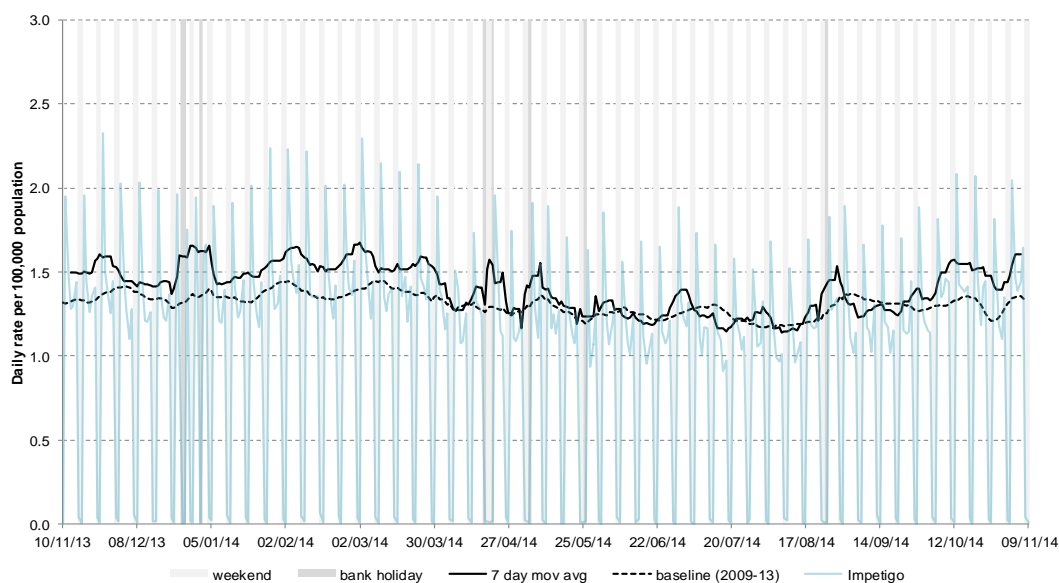
21: Cellulitis

Daily incidence rate (and 7-day moving average*) per 100,000 population (all England, all ages).



22: Impetigo

Daily incidence rate (and 7-day moving average*) per 100,000 population (all England, all ages).



23: Intentionally left blank

Intentionally left blank.

* 7-day moving average adjusted for bank holidays.

12 November 2014

Year: 2014 Week: 45

Notes and further information

- The Public Health England GP in hours surveillance system is a syndromic surveillance system monitoring community-based morbidity recorded by GP practices.
- This system captures anonymised GP morbidity data from two GP clinical software systems, EMIS, from version 1 of the QSurveillance® database, and TPP SystemOne.
- Historic baselines are smoothed to remove bank holiday effects. Data from 2009 has been excluded for selected indicators which were affected by the H1N1 influenza pandemic. No baseline is currently included for allergic rhinitis.
- The appendix illustrates weekly GP in hours consultation data for influenza-like illness (ILI). Each PHE Centre is represented by a thematic map showing its constituent local authorities (LA) coloured according to the weekly consultation rate of ILI per 100,000 population, areas with very low numbers are suppressed and shown as no data.
- The maps on the following pages contains Ordnance Survey data © Crown copyright and database right 2014. Contains National Statistics data © Crown copyright and database right 2014.

Acknowledgements:

We thank and acknowledge the University of Nottingham, ClinRisk® and the contribution of EMIS and EMIS practices. Data source: version 1 of the QSurveillance® database.

We thank TPP, ResearchOne and the SystemOne GP practices contributing to this surveillance system.

Contact ReSST:
syndromic-surveillance
@phe.gov.uk

GP In Hours Syndromic Surveillance System Bulletin.

Produced by: PHE Real-time Syndromic Surveillance Team
6th Floor, 5 St Philip's Place, Birmingham, B3 2PW

Tel: 0344 225 3560 > Option 4 > Option 2

Fax: 0121 236 2215

Web: <https://www.gov.uk/government/collections/syndromic-surveillance-systems-and-analyses>

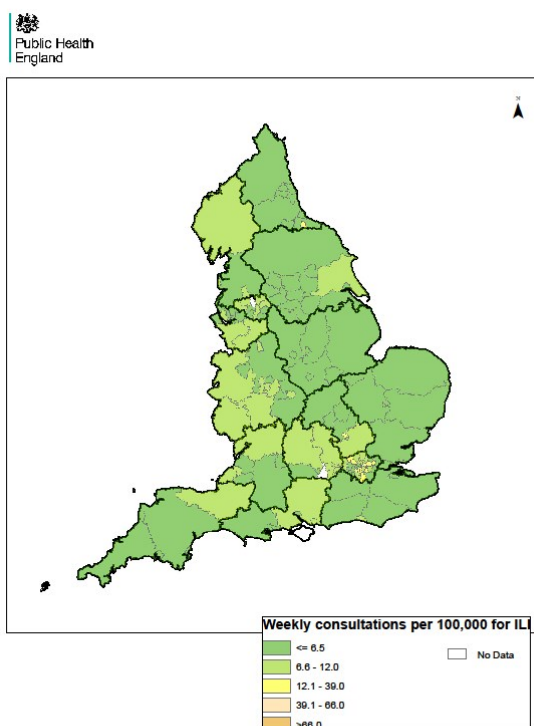
11 November 2014

Year: 2014 Week: 45

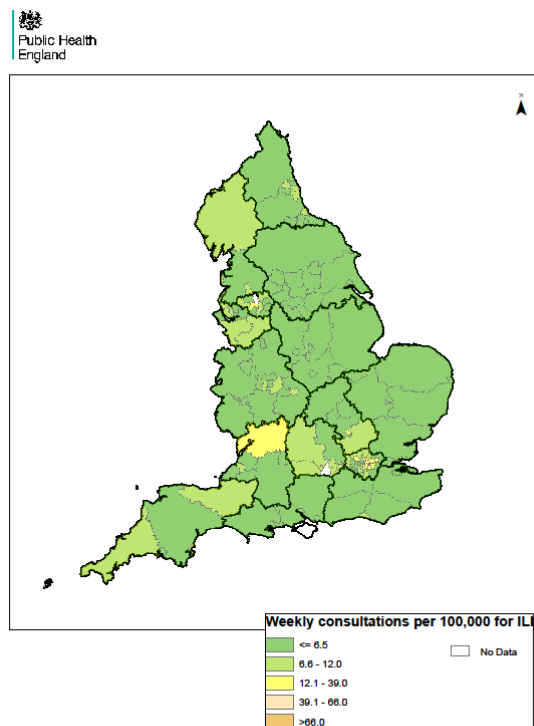
England

Weekly ILI
consultation
rate by LA
for England

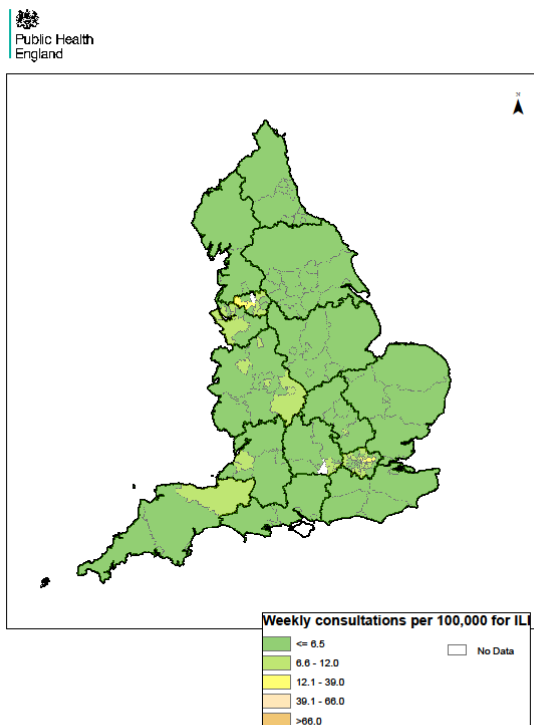
Week 42



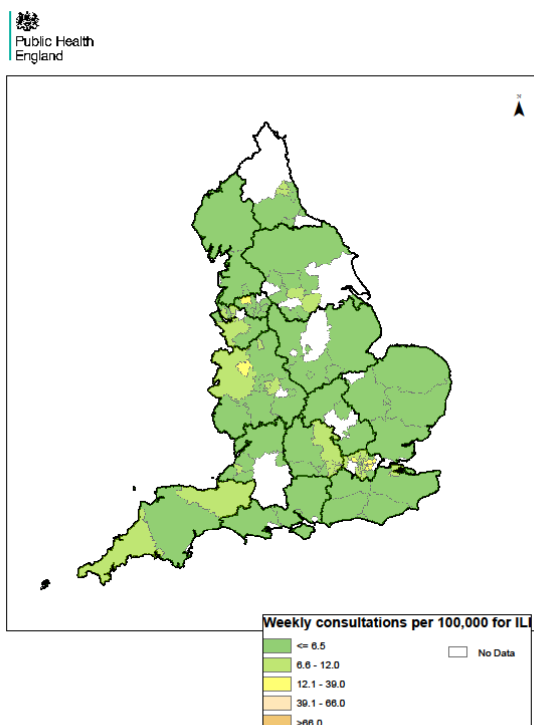
Week 43



Week 44



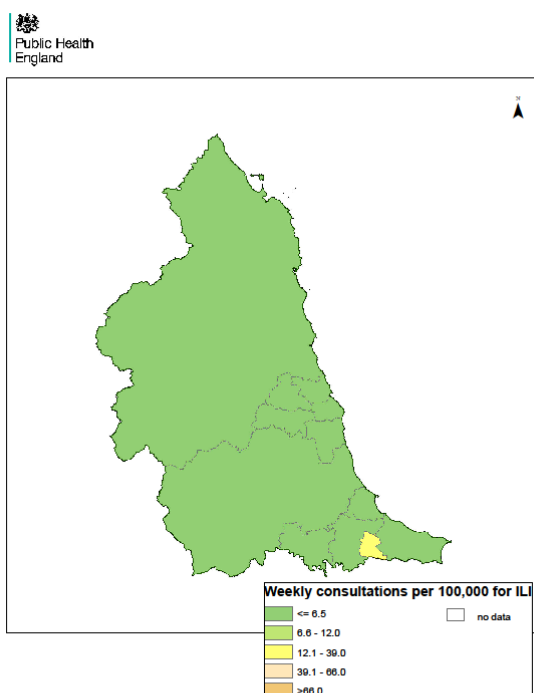
Week 45



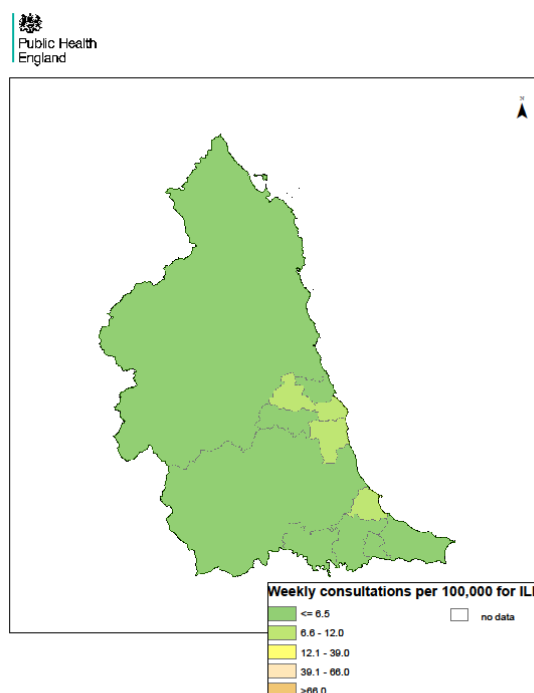
North East

Weekly ILI
consultation
rate by LA
for North
East PHE
Centre

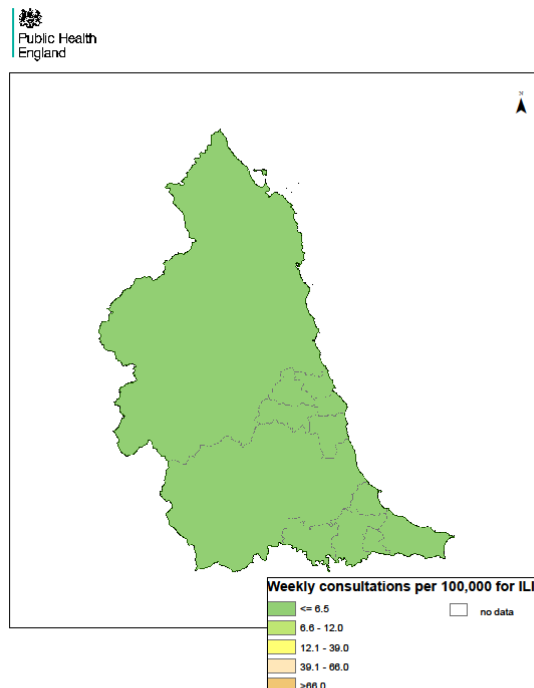
Week 42



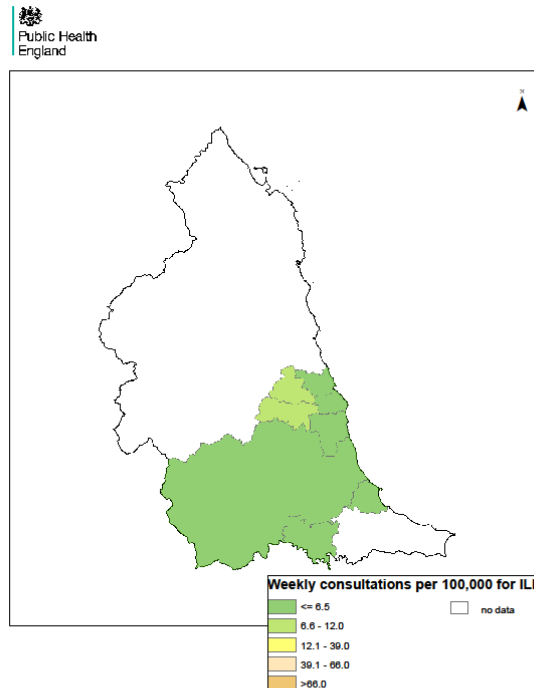
Week 43



Week 44



Week 45



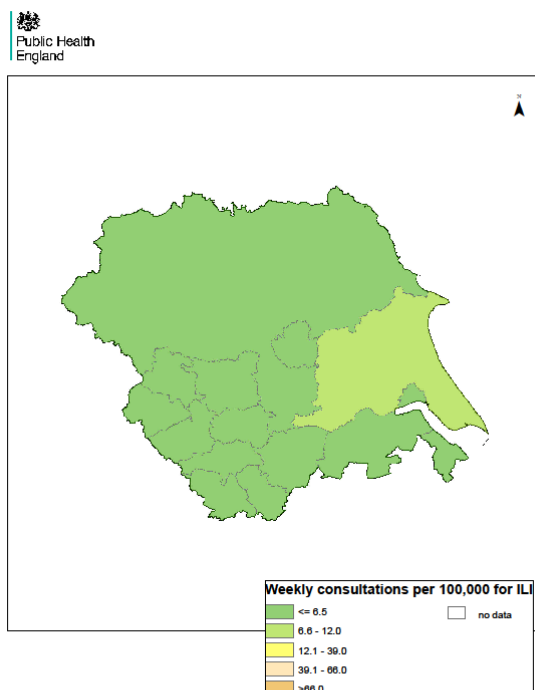
11 November 2014

Year: 2014 Week: 45

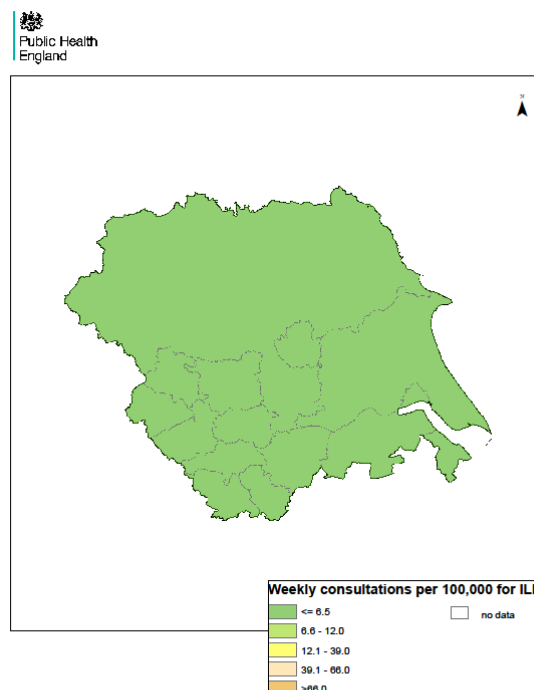
Yorkshire & Humber

Weekly ILI
consultation
rate by LA
for Yorkshire
& Humber
PHE Centre

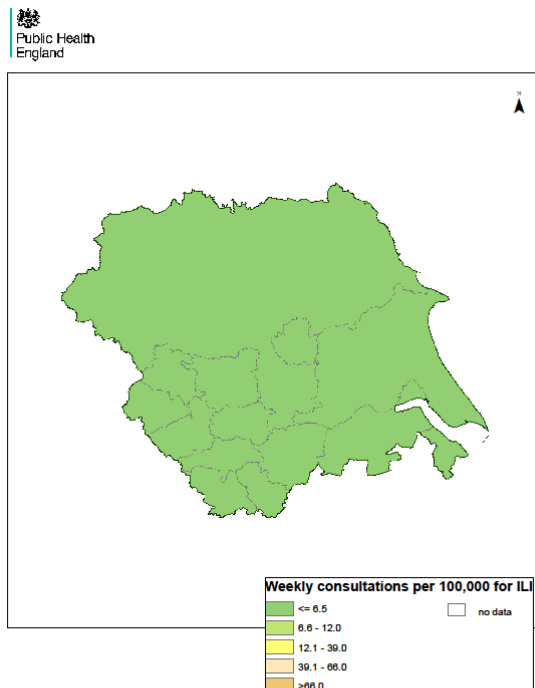
Week 42



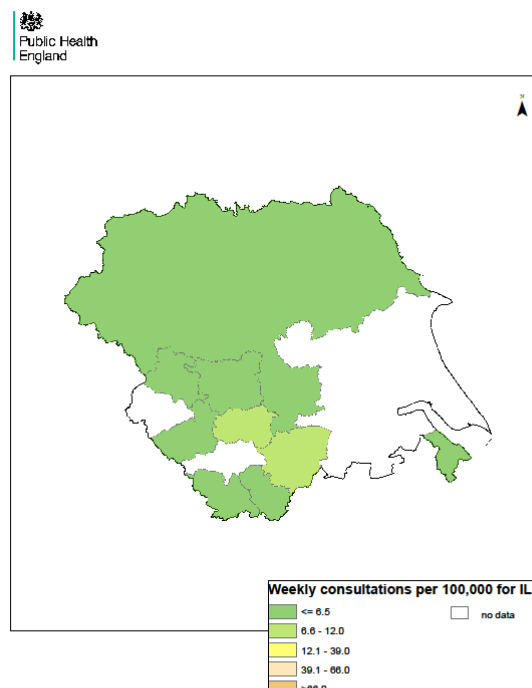
Week 43



Week 44



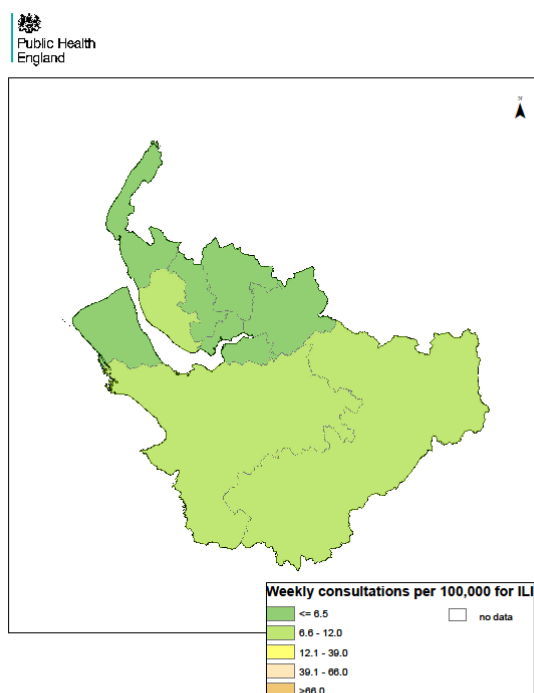
Week 45



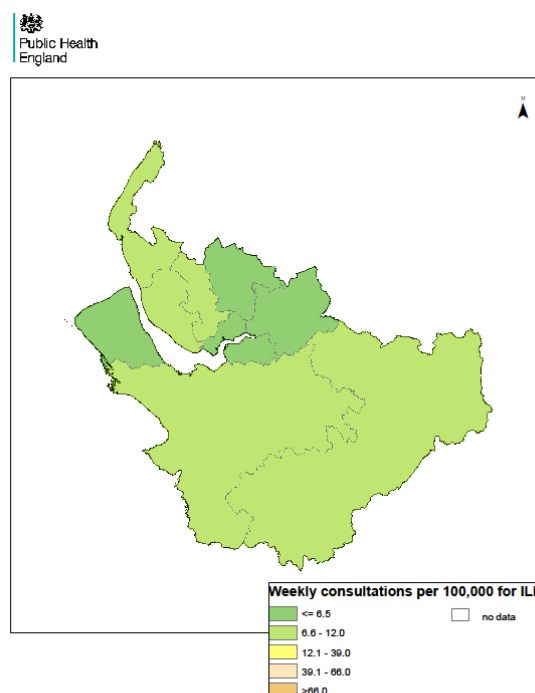
Cheshire & Merseyside

Weekly ILI consultation rate by LA for Cheshire & Merseyside PHE Centre

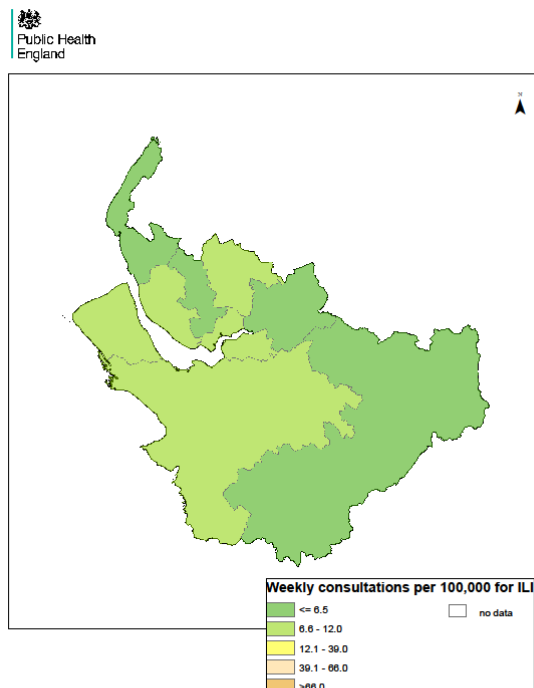
Week 42



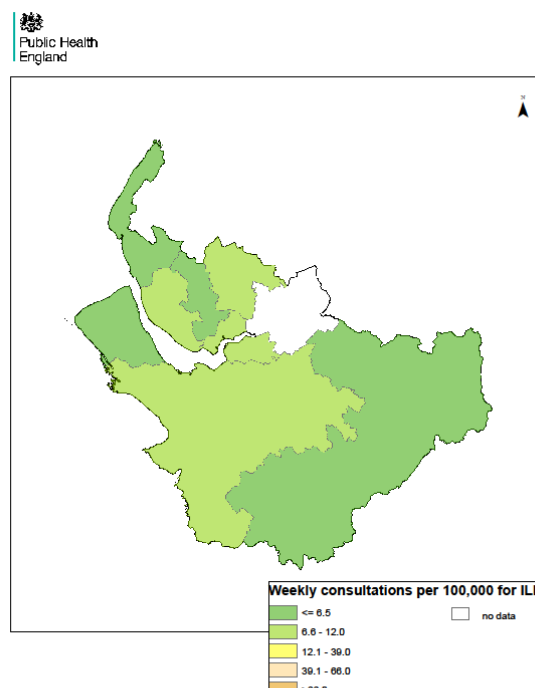
Week 43



Week 44



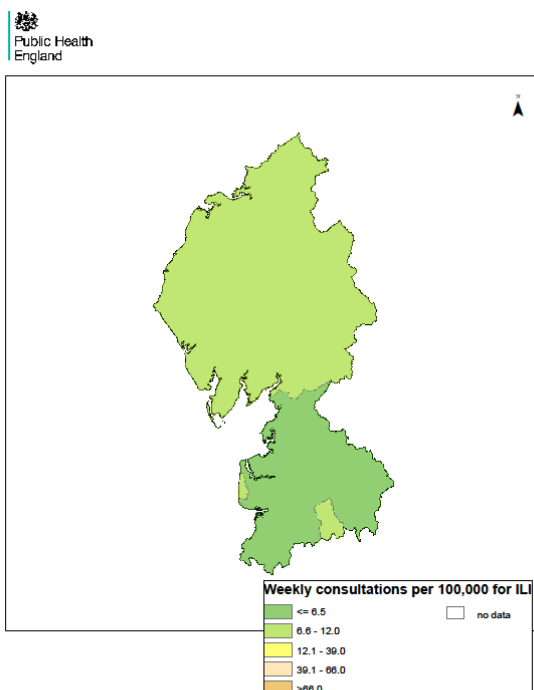
Week 45



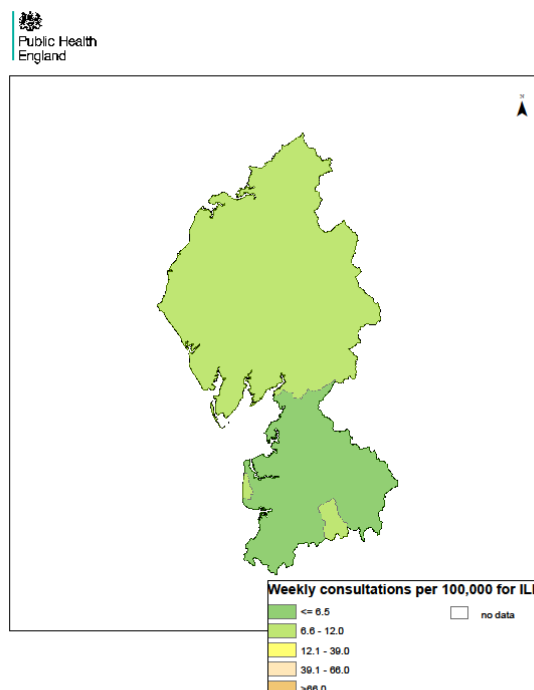
Cumbria & Lancashire

Weekly ILI consultation rate by LA for Cumbria & Lancashire PHE Centre

Week 42



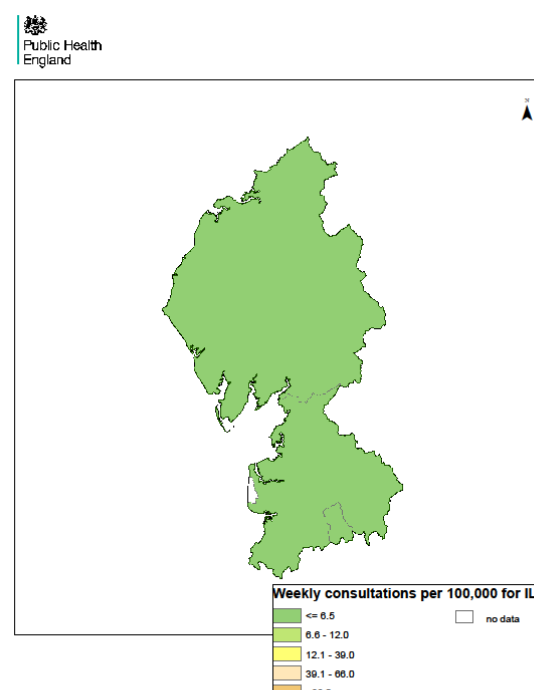
Week 43



Week 44



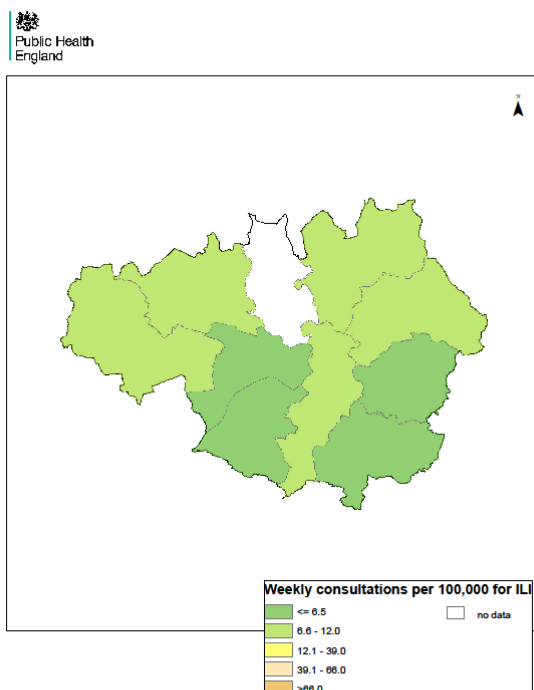
Week 45



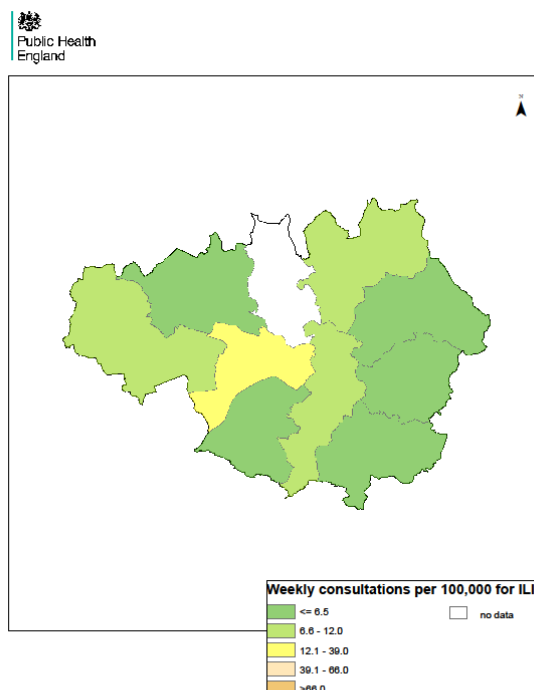
5: Greater Manchester

Weekly ILI consultation rate by LA for Greater Manchester PHE Centre

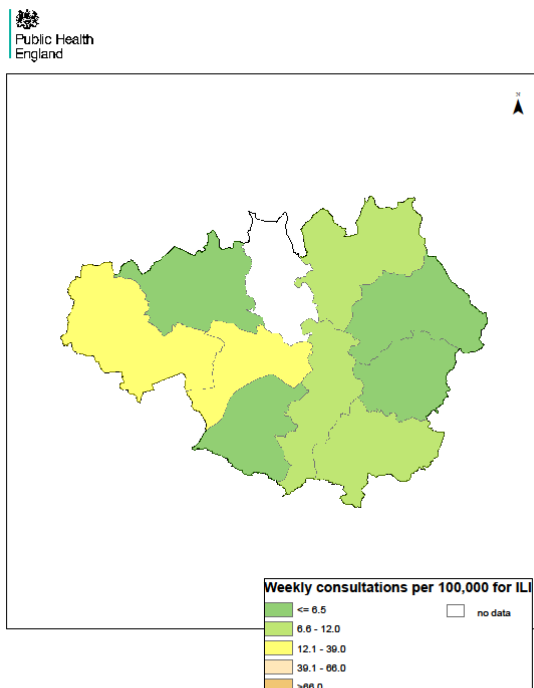
Week 42



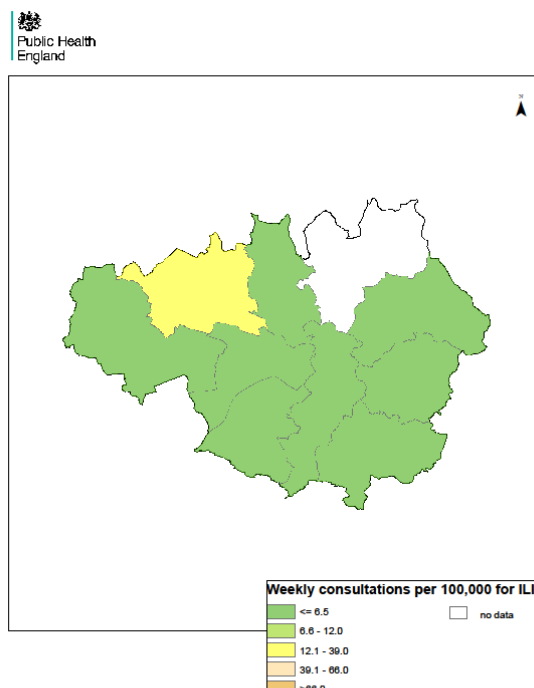
Week 43



Week 44



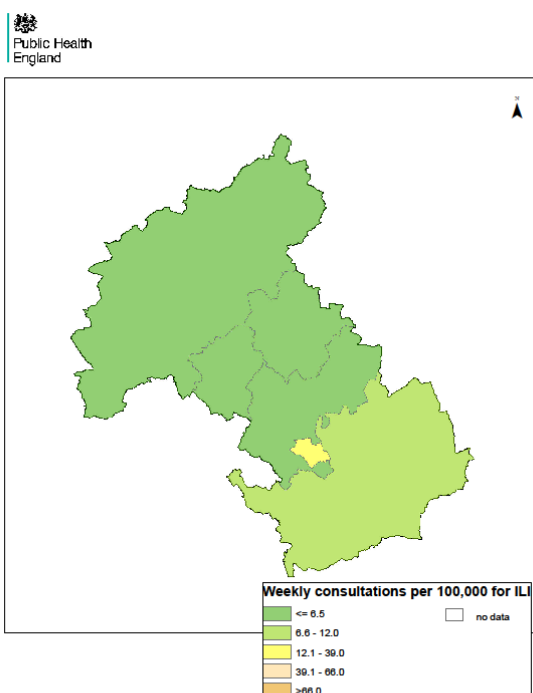
Week 45



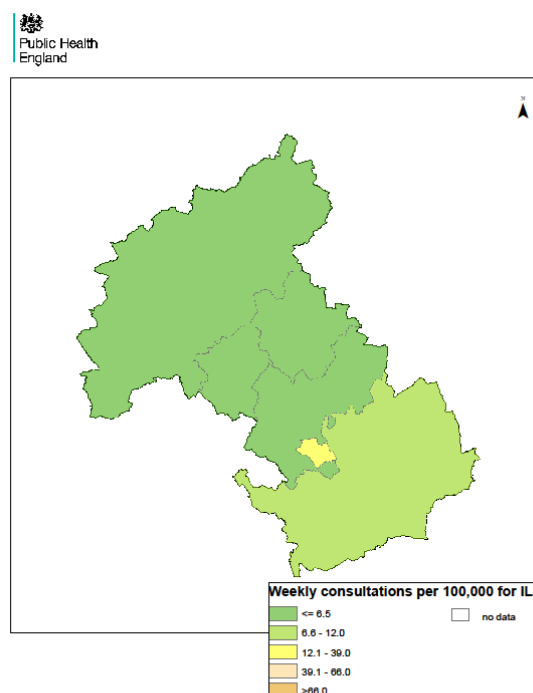
**South
Midlands &
Hertfordshire**

Weekly ILI
consultation
rate by LA
for South
Midlands &
Hertfordshire
PHE Centre

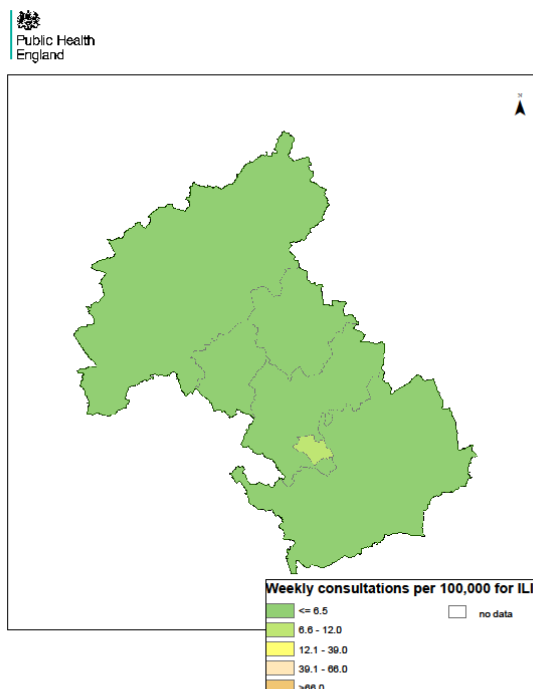
Week 42



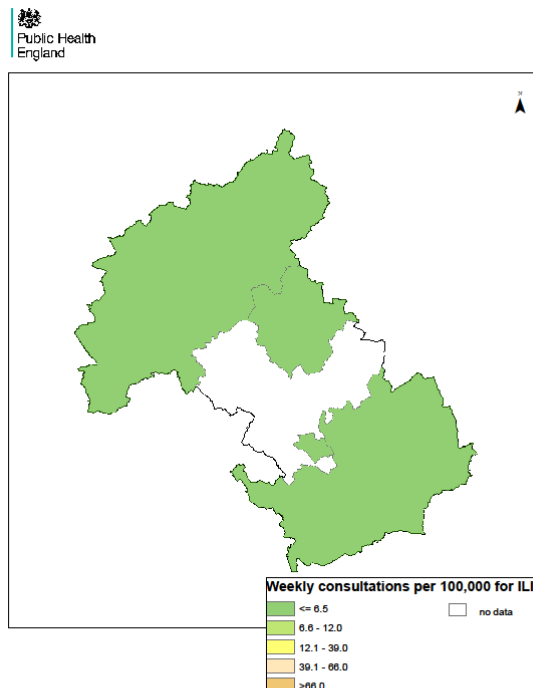
Week 43



Week 44



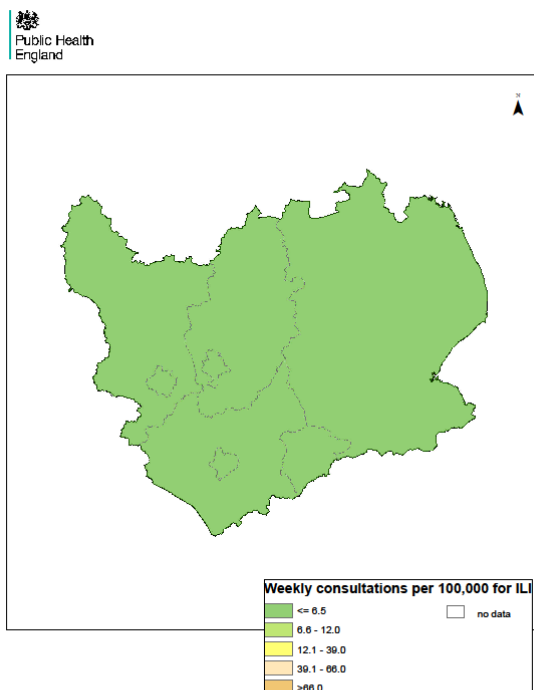
Week 45



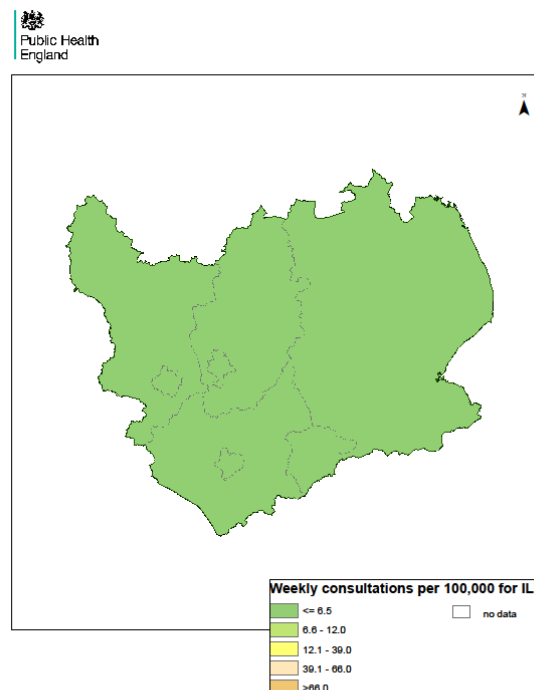
**East
Midlands**

Weekly ILI
consultation
rate by LA
for East
Midlands
PHE Centre

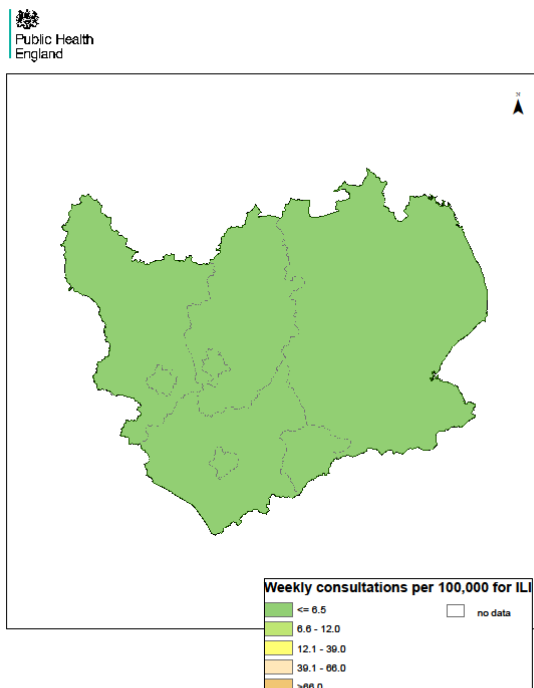
Week 42



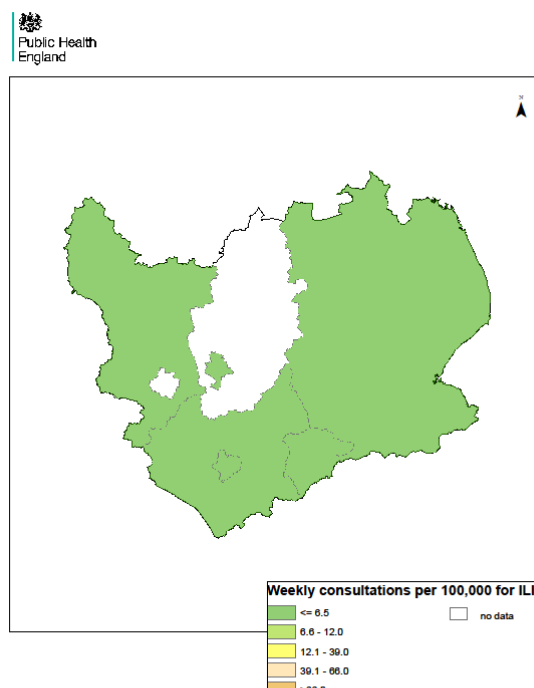
Week 43



Week 44



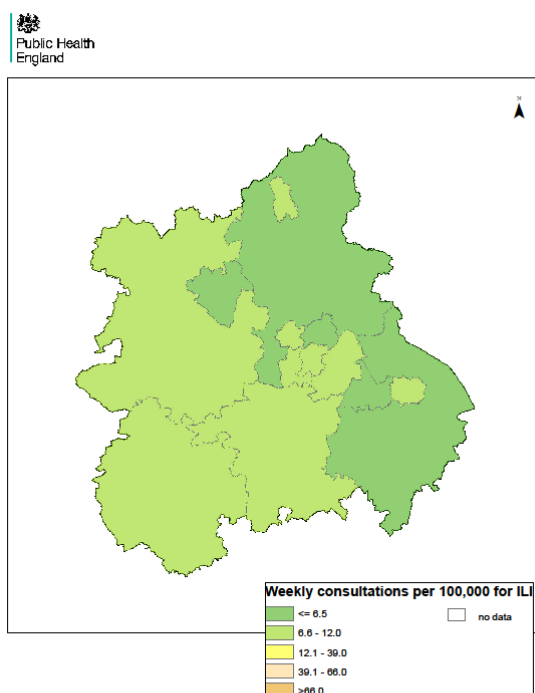
Week 45



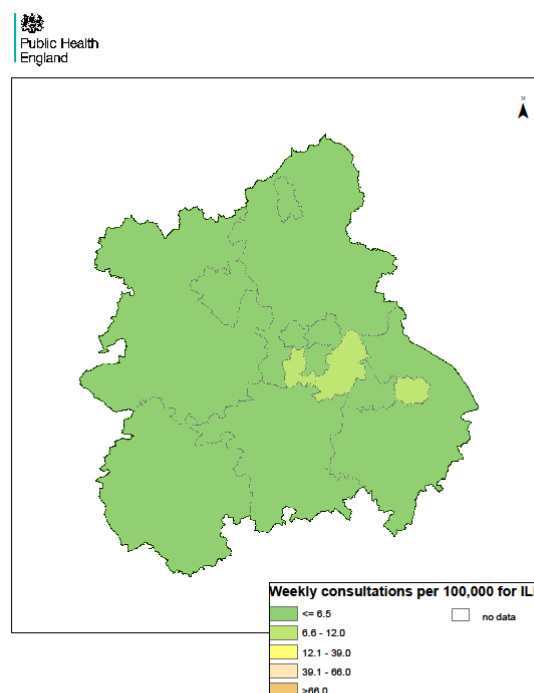
**West
Midlands**

Weekly ILI
consultation
rate by LA
for West
Midlands
PHE Centre

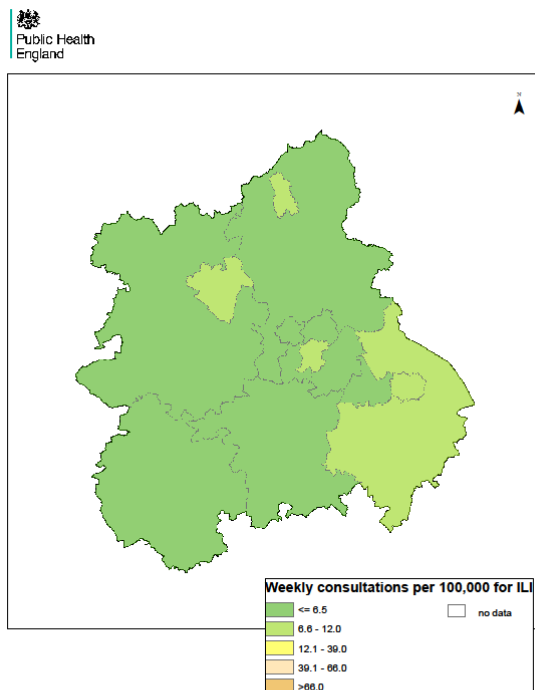
Week 42



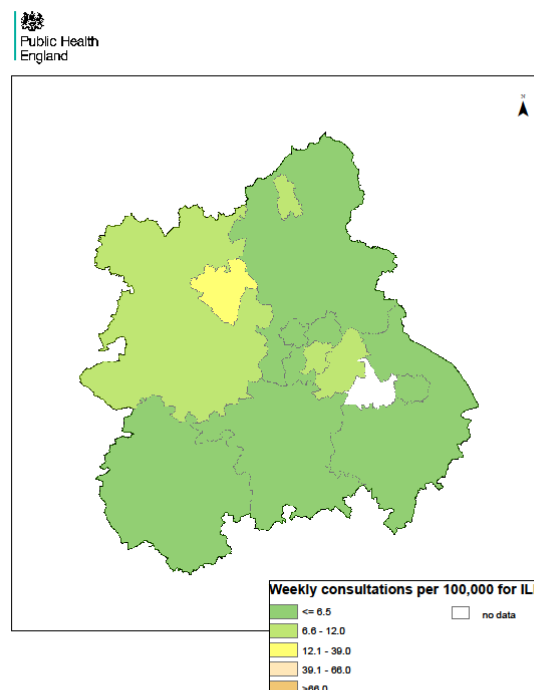
Week 43



Week 44



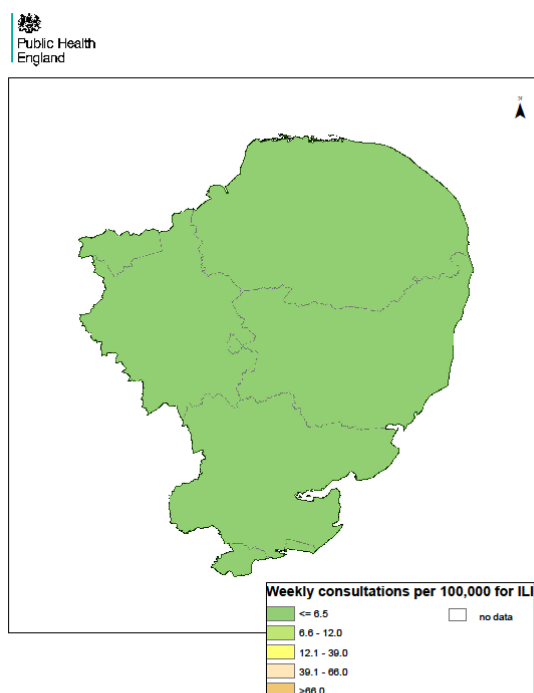
Week 45



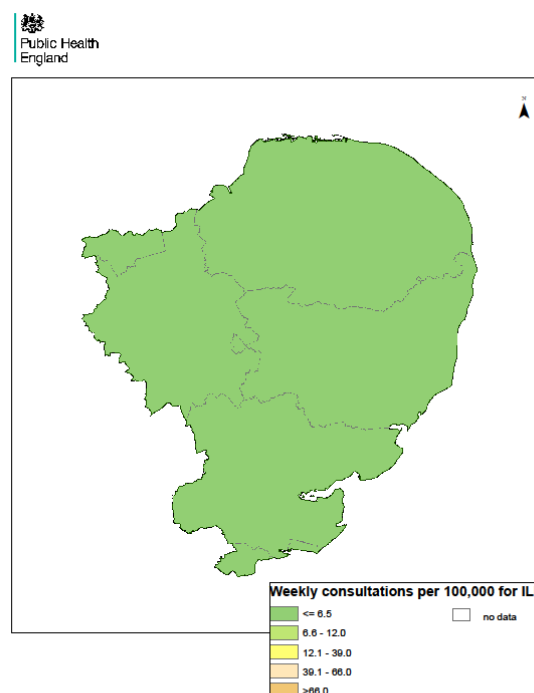
Anglia & Essex

Weekly ILI
consultation
rate by LA
for Anglia &
Essex PHE
Centre

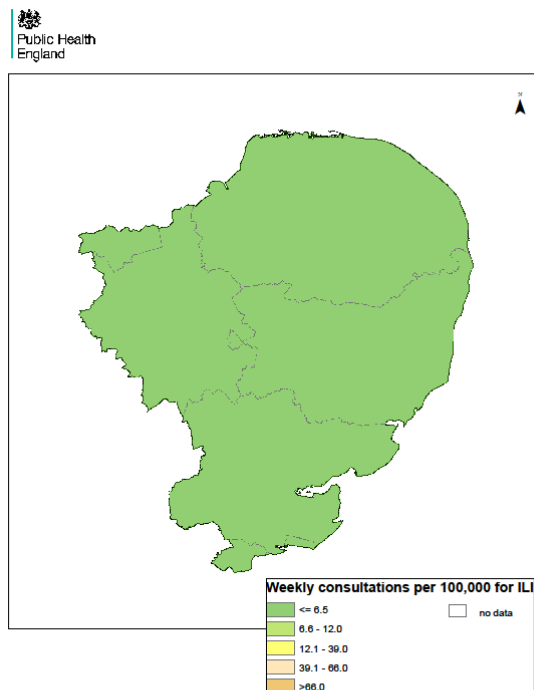
Week 42



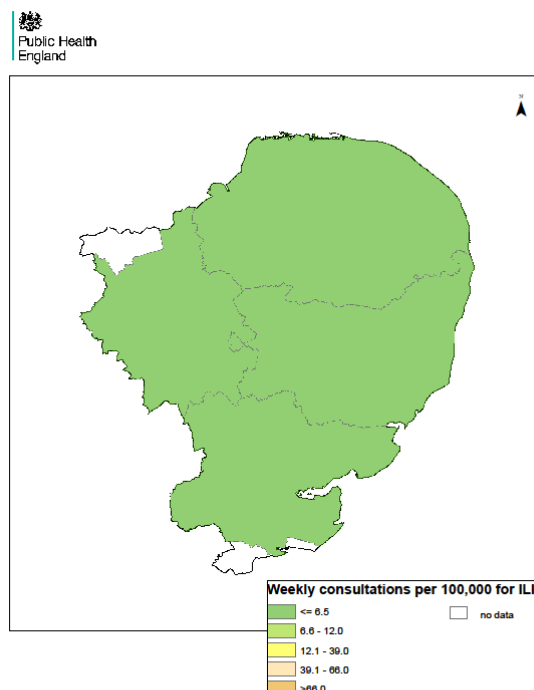
Week 43



Week 44



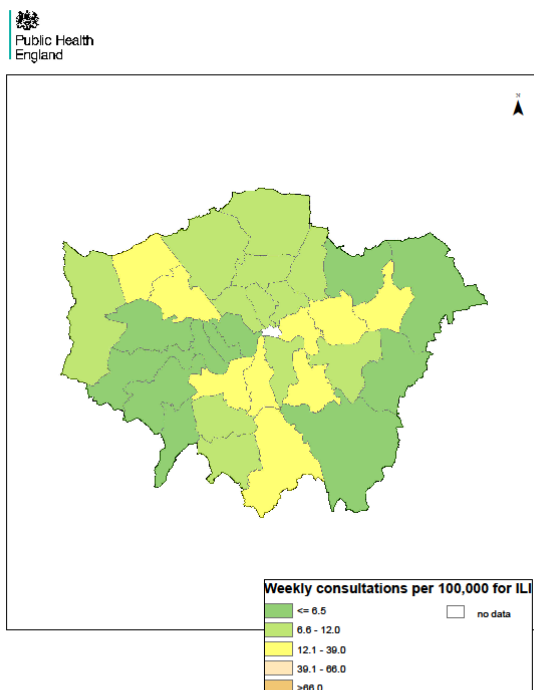
Week 45



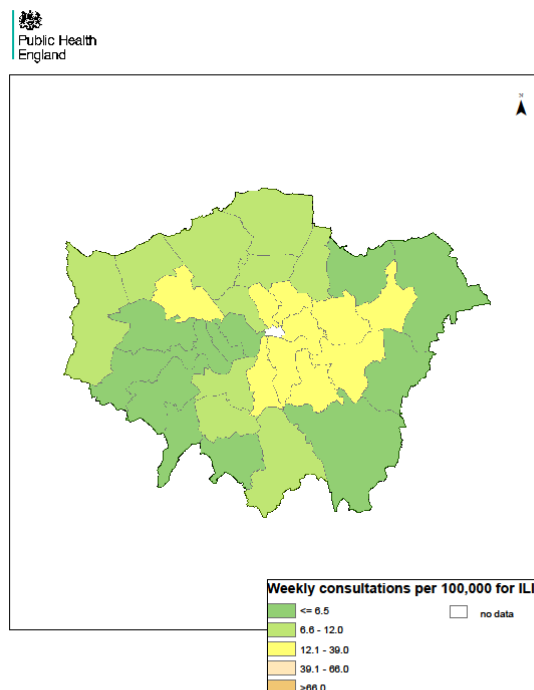
London

Weekly ILI
consultation
rate by LA
for London
PHE Centre

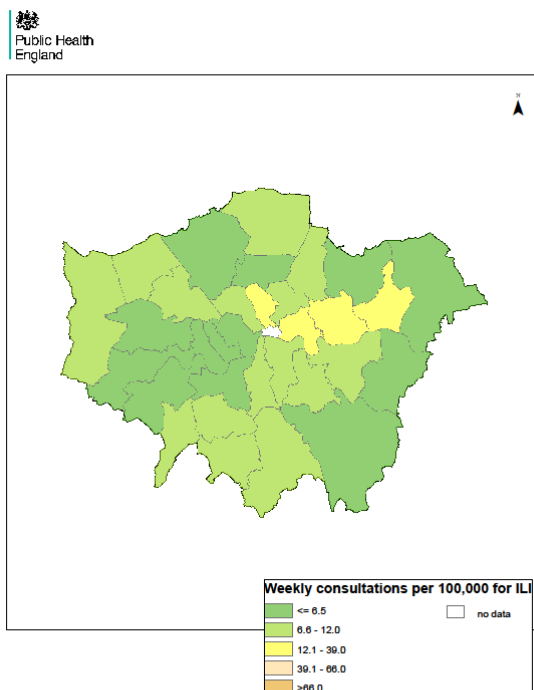
Week 42



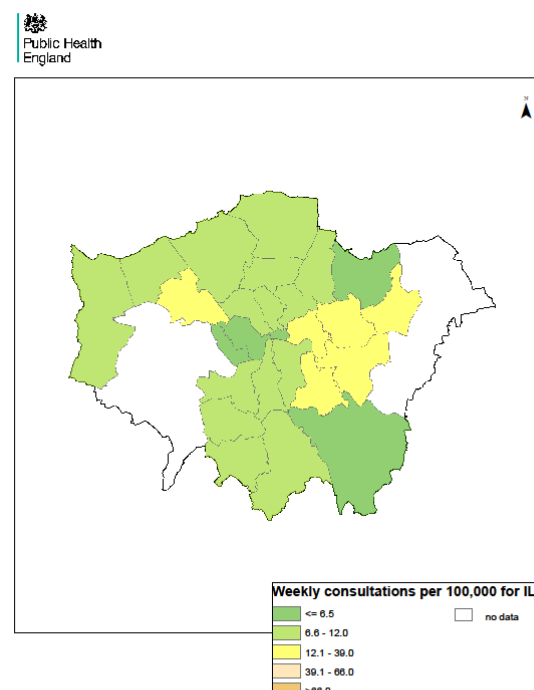
Week 43



Week 44



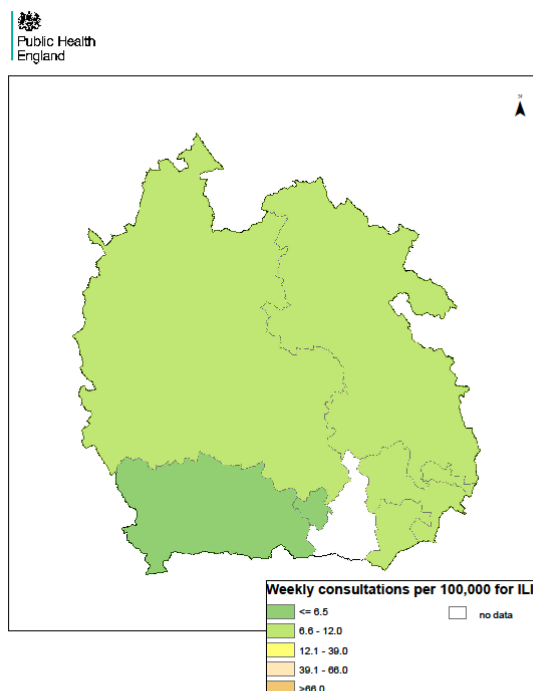
Week 45



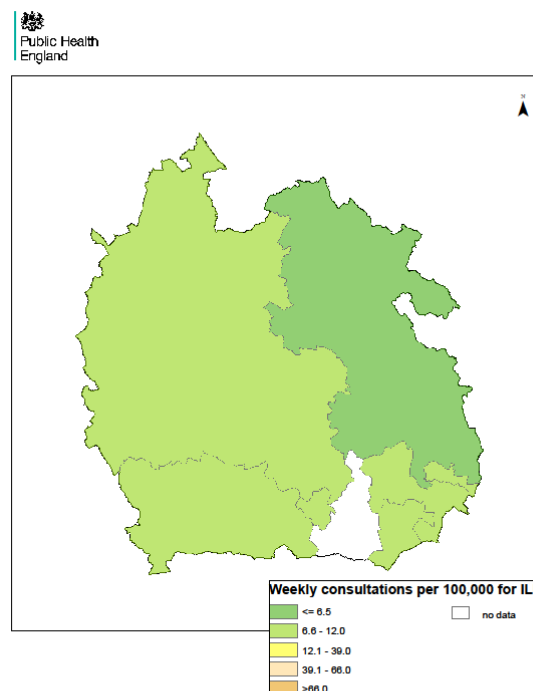
Thames Valley

Weekly ILI consultation rate by LA for Thames Valley PHE Centre

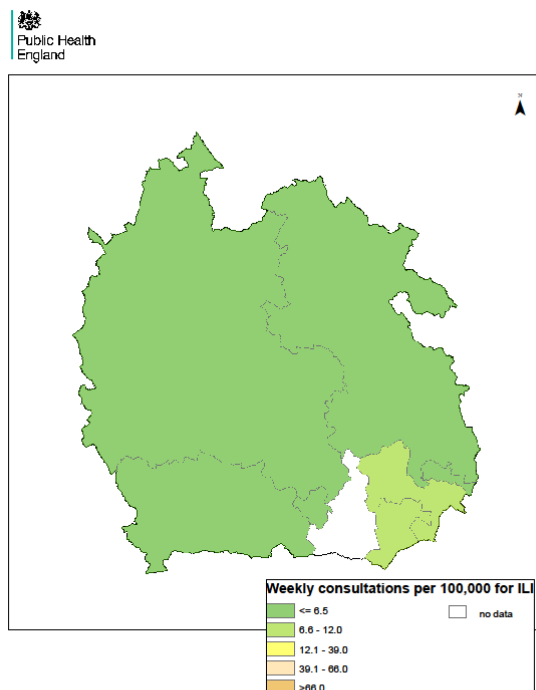
Week 42



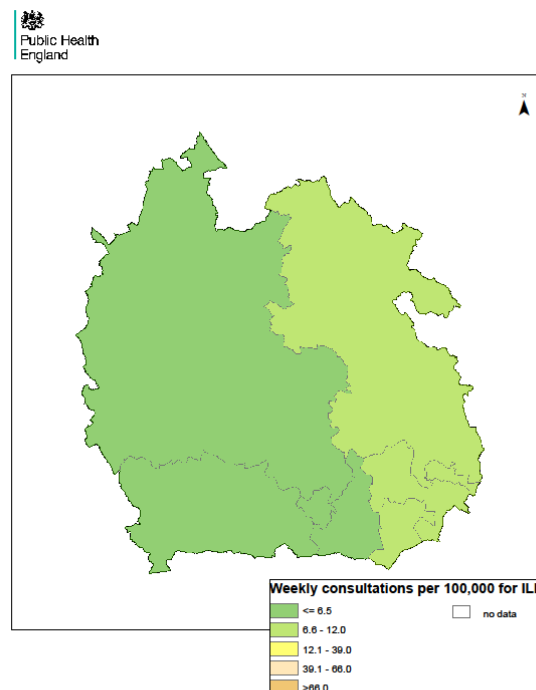
Week 43



Week 44



Week 45



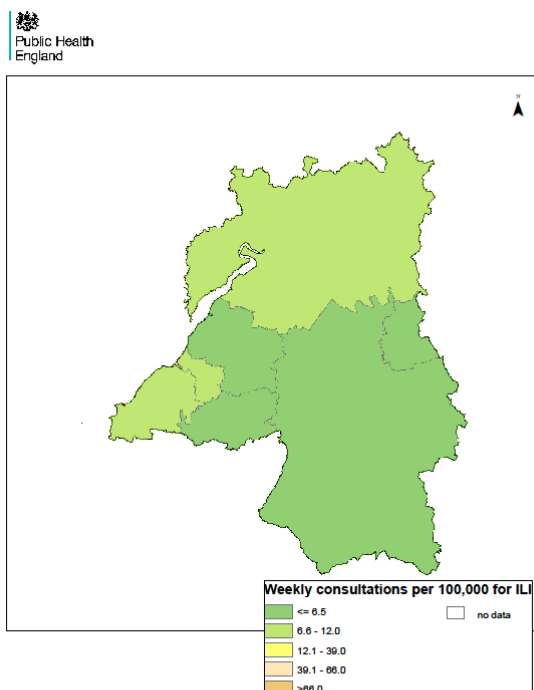
11 November 2014

Year: 2014 Week: 45

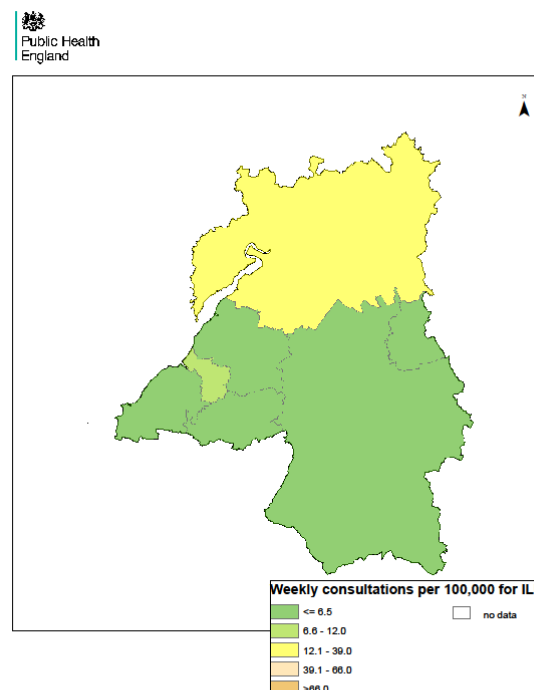
Avon, Gloucestershire & Wiltshire

Weekly ILI
consultation
rate by LA
for Avon,
Gloucestershire
& Wiltshire
PHE Centre

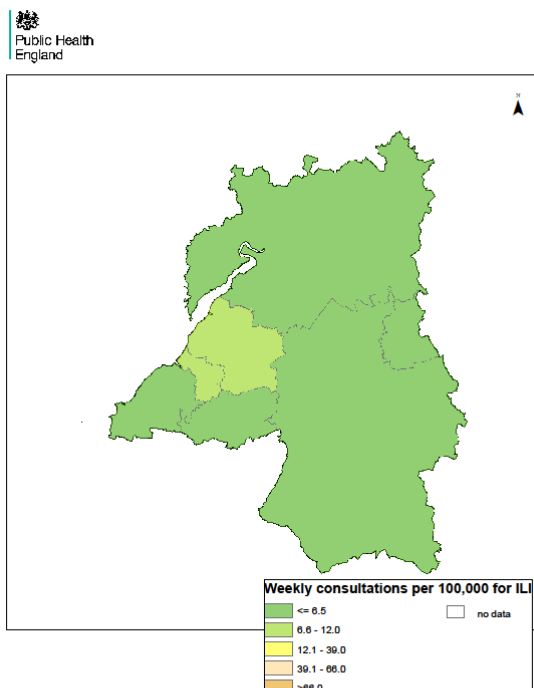
Week 42



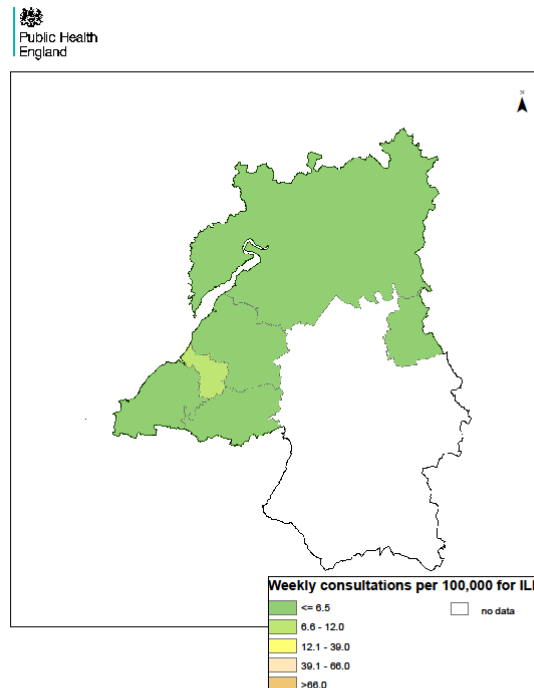
Week 43



Week 44



Week 45



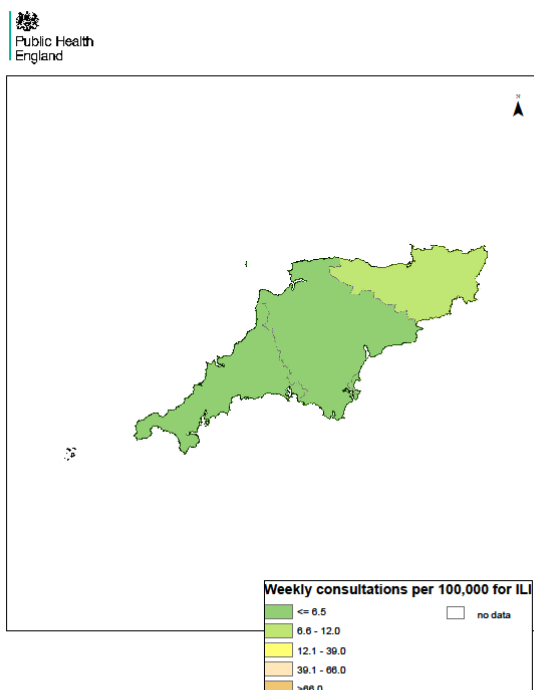
11 November 2014

Year: 2014 Week: 45

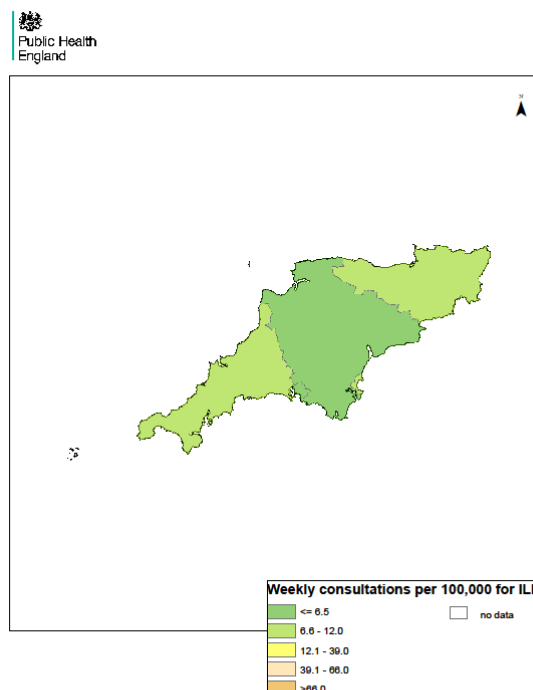
**Devon,
Cornwall &
Somerset**

Weekly ILI
consultation
rate by LA
for Devon,
Cornwall &
Somerset
PHE Centre

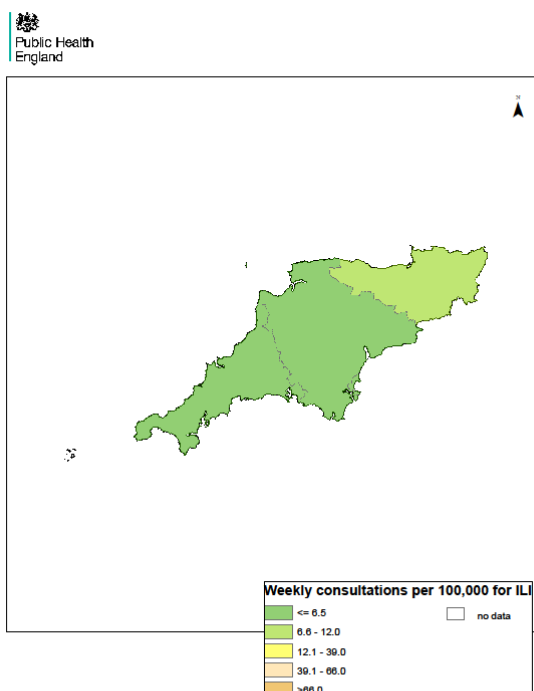
Week 42



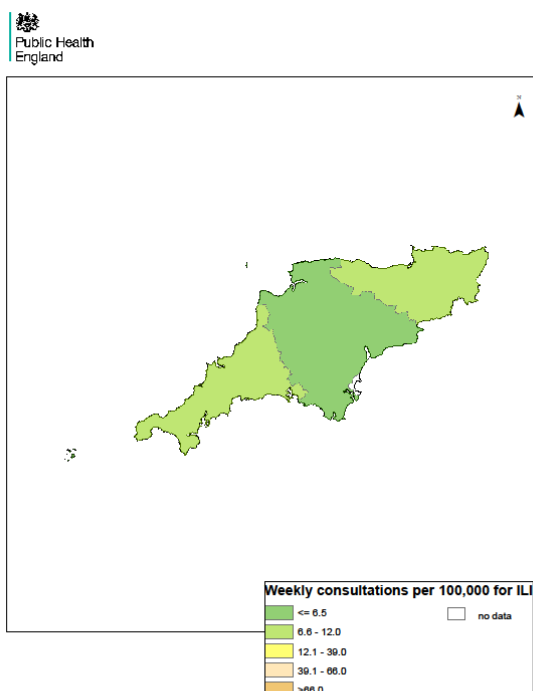
Week 43



Week 44



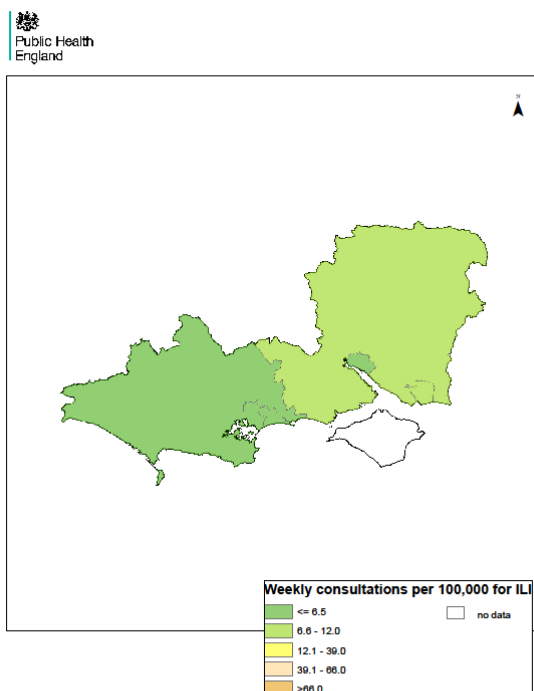
Week 45



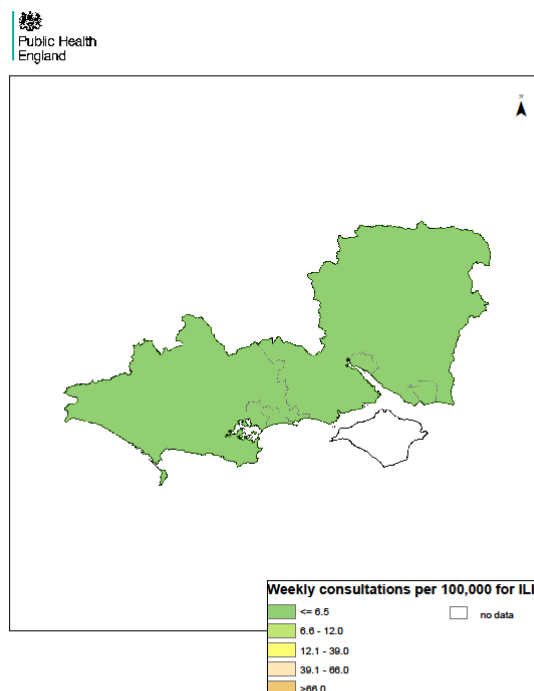
Wessex

Weekly ILI
consultation
rate by LA
for Wessex
PHE Centre

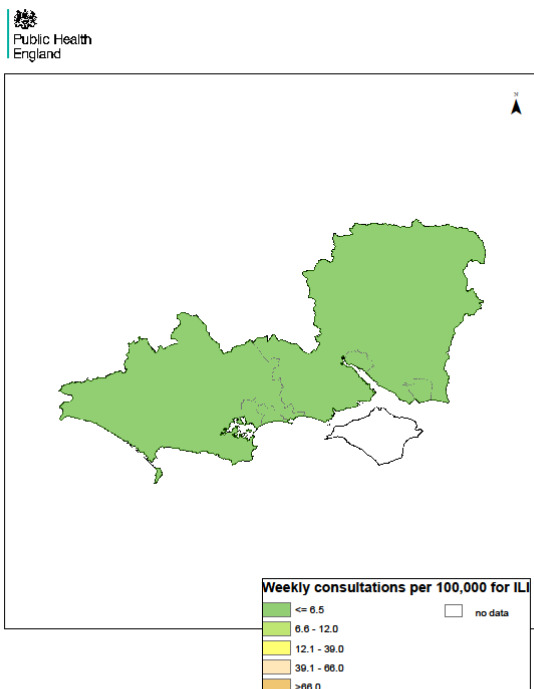
Week 42



Week 43



Week 44



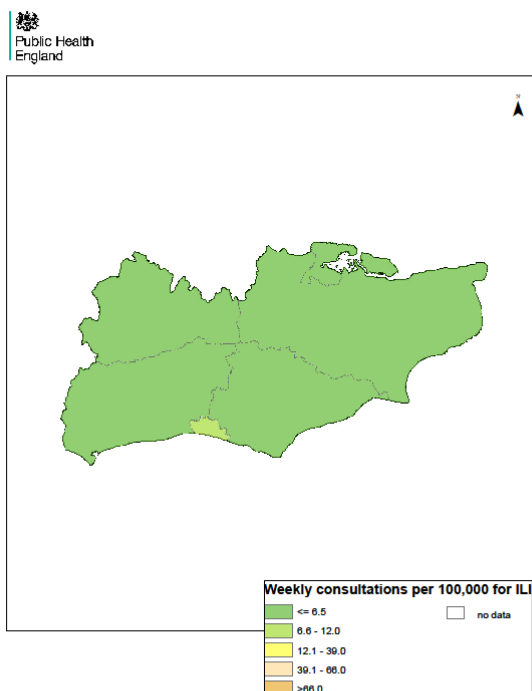
Week 45



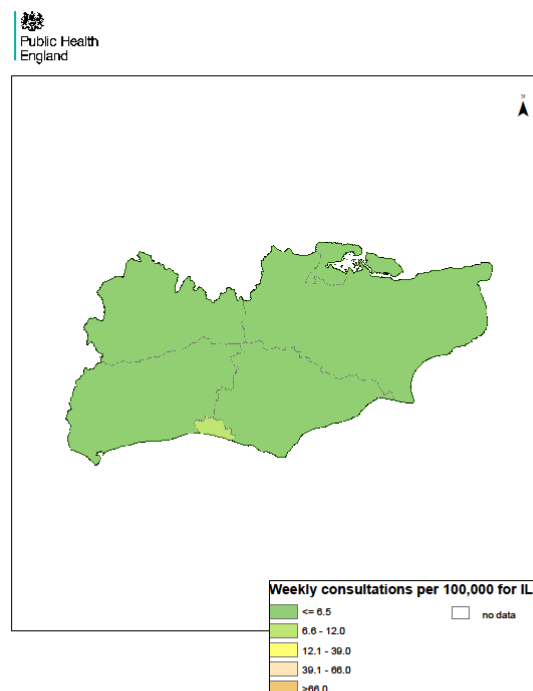
Kent, Surrey & Sussex

Weekly ILI
consultation
rate by LA
for Kent,
Surrey &
Sussex PHE
Centre

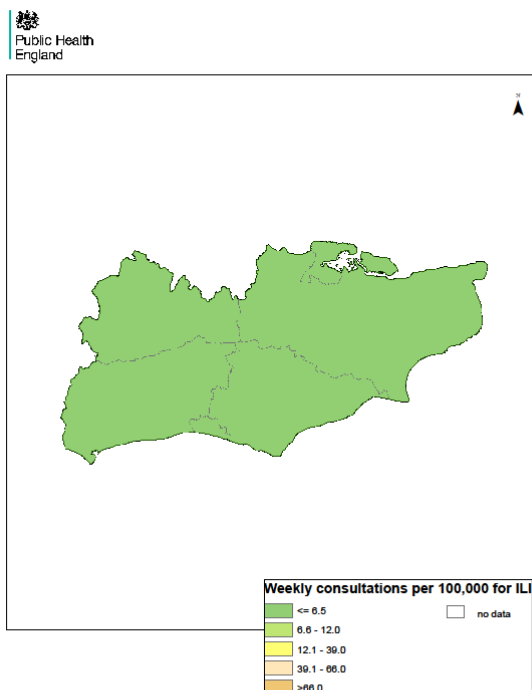
Week 42



Week 43



Week 44



Week 45

