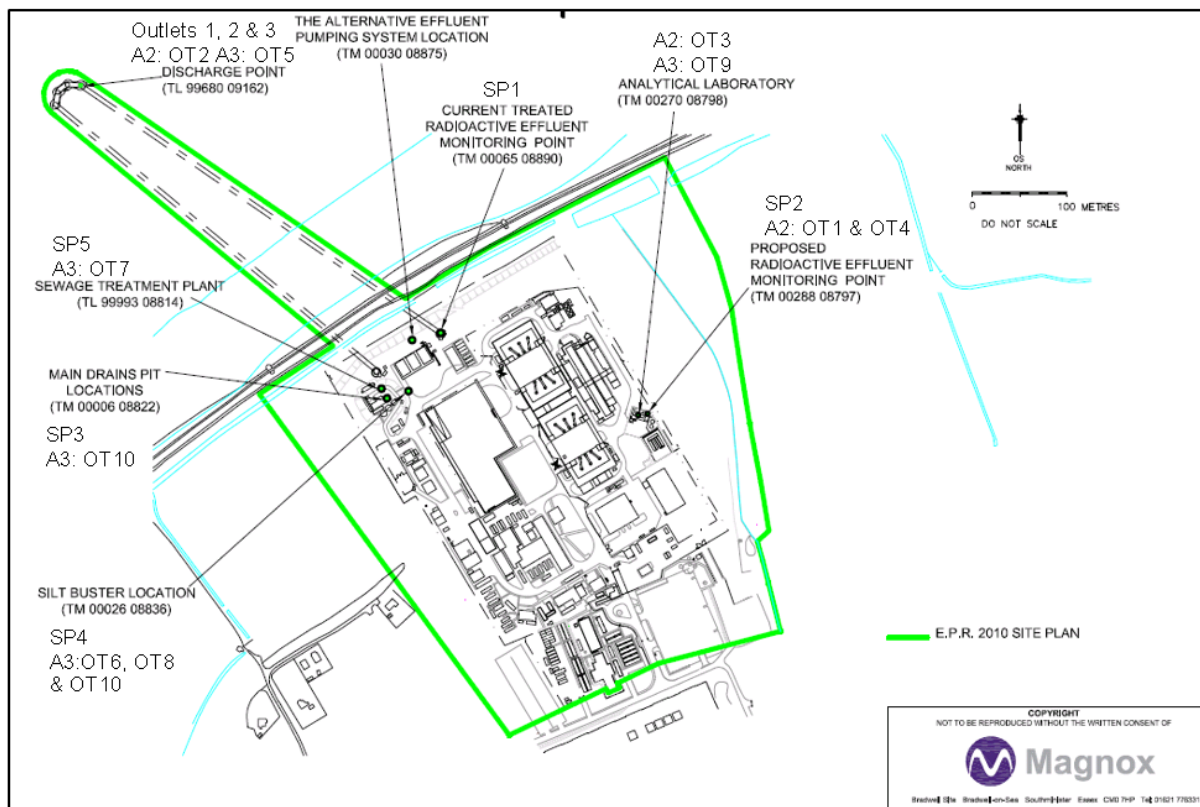


## Mixed Effluent Permit



A3:OT10 is not relevant to SP4 as the OT describes the pumping arrangement from the main drains pit and not the silt buster. Therefore, A3:OT10 should be removed from SP4 (TM 00026 08836).

SP1 is the combined monitoring point currently used for the mixed effluent but it will be replaced with SP4 (voids/silt buster), SP5 (sewage treatment effluent) and SP2 (radioactive effluent) individual monitoring points. This will be significant when we switch over to the new discharge line and lose the dilution that happens at SP1.