

# Withdrawn

**This publication has been withdrawn.**

It is no longer current.

# Guidance for Users



## Using DWP National Statistics

**DWP** Department for  
Work and Pensions

Information Directorate

© Crown Copyright 2011

## Summary

The best benefit statistics to use are sourced from the new published Work and Pensions Longitudinal Study (WPLS)<sup>1</sup>. These data are based on 100% of claimants and cover information such as age and gender of claimant, duration of their spell on benefit and geographical locations of claimants.

If you require more detailed breakdowns specific to one benefit (for example type of JSA in payment) you may need to rely on our 5% sample data which has more detail but less comprehensive coverage.

Please use the WPLS data first and only rely on the sample data if the information you need is not available on the WPLS. DWP recommends that, where the detail is only available on the 5% sample data, the proportions derived should be applied to the overall 100% total for the benefit.

The primary source of statistics is now an internet-based Tabulation Tool. This document describes how to use the information held within the WPLS Tabulation Tool in conjunction with the 5% sample Tabulation Tool.

---

<sup>1</sup> Some benefits and services are not yet covered by the WPLS e.g. Housing Benefit, Council Tax Benefit and Industrial Injuries Benefit.

## **Should I use the 5% sample Tabulation Tool or the WPLS Tabulation Tool to obtain DWP statistics?**

**There are two key principles to guide this decision:**

**1 Users should obtain statistics exclusively from the WPLS Tabulation Tool whenever possible.**

This is because the WPLS data, as from 27<sup>th</sup> October 2005, is the DWP's key data source for many benefit statistics. These data are used to produce headline National Statistics. WPLS data are based on 100% of claimants.

**2 If it is necessary to use the 5% sample Tabulation Tool, it should NOT be used in isolation, but in conjunction with the WPLS Tabling Tool.**

It is sometimes necessary to use 5% sample data because:

- Only limited information is available from the WPLS Tabulation Tool prior to August 1999 for Working Age benefits and pre-May 2002 for pensioner benefits.
- Certain variables appear only in the 5% sample data and not in the WPLS 100% data.
- Therefore for more detailed breakdowns specific to one benefit (for example type of JSA in payment) you may need to rely on our 5% sample data which has more detail but less comprehensive coverage.

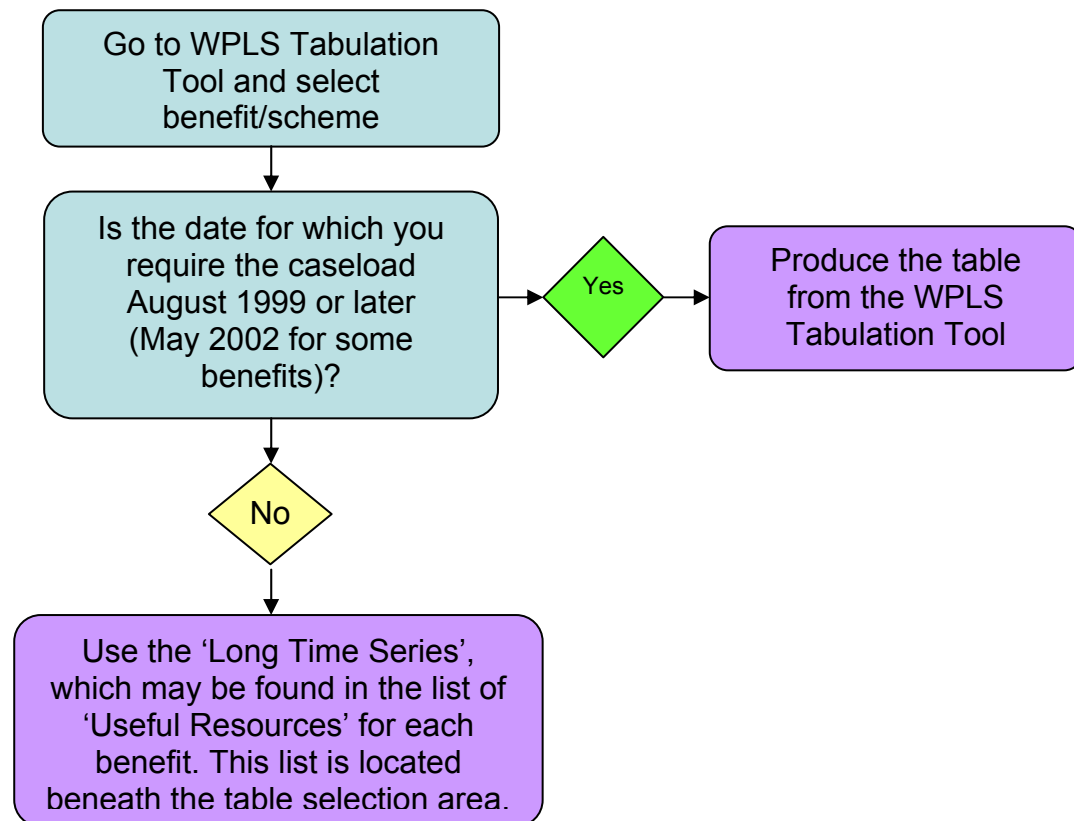
### **Which variables are available?**

Two annexes to this document provide lists of variables and the dates for which they are available.

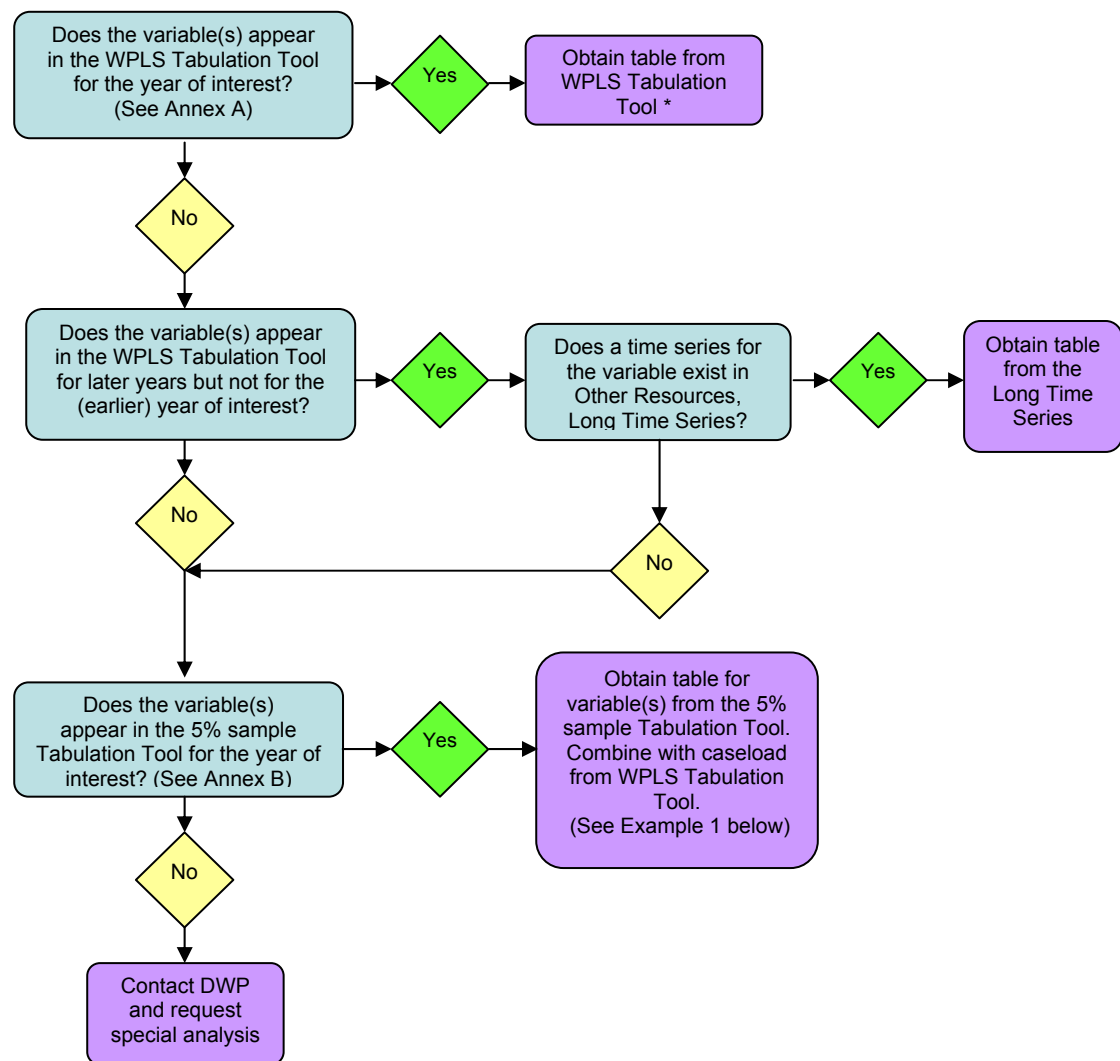
Annex A Variables on WPLS 100% Tabling Tool

Annex B Variables on 5% sample Tabulation Tool

## To obtain total caseload – flow chart



## To obtain statistics other than total caseload - flowchart



\* If the variables appear in the WPLS Tabulation Tool but not in the combination desired please contact DWP to request a special analysis

## Combining 5% and WPLS data

You will need to use 5% sample data in conjunction with WPLS data if a variable is available in the 5% sample data but not the WPLS data. **The basic principle in combining the two, is that the caseload should be obtained from the WPLS data. To this, percentages taken from the 5% sample data are applied.**

There are 4 steps for combining 5% sample and WPLS data:

- Step 1** Obtain the **caseload** at the relevant date from the **WPLS Tabulation Tool** or, for earlier years, the long time series spreadsheet (available from the WPLS Tabulation Tool under 'Useful Resources and Sites')
- Step 2** From the **5% sample Tabulation Tool**, produce a table for the relevant **date and variable**.
- Step 3** Calculate the proportional distribution of the variable for the 5% total cases.
- Step 4** Apply the proportions to the WPLS caseload.

## Example 1: combining 5% and WPLS data

### Bereavement Benefit, number of dependants, February 2003

It is necessary to combine 5% and WPLS statistics because the variable showing number of dependants appears in the 5% data but not the WPLS data.

- Step 1** Obtain caseload from the WPLS Tabulation Tool.

For Bereavement Benefit this is:

	<b>Total</b>
	<b>Caseload (Thousands)</b>
<b>FEB03</b>	46.3

**Step 2** Obtain information about the number of dependants from 5% sample Tabulation Tool for March 2003\*.

	Total
	Caseload (Thousands)
Total	44.4
Number of dependants	
No dependants	24.1
1 dependant	10.7
2 dependants	7.1
3 dependants	2.0
4 dependants	* 0.3
5 dependants or more	* 0.1
Unknown	-

**\*Note: State Pension, Widow's Benefit and Bereavement Benefit.**

The data extraction dates for 5% data (March and September) and WPLS data (February, May, August and November) are different. The convention which users should adopt for these benefits is: when combining 5% and WPLS 100% data, utilise only **WPLS data for February and August**. Apply the proportions obtained from the **5% sample data for the following month, that is March and September**.



**Step 3** Convert the distribution of the variable from the 5% sample data to proportions:

E.g. proportion with 1 dependant =  
 $10.7 \text{ (number with one dependant)} \div 44.4 \text{ (total caseload from 5\% sample)}$   
 $= 0.241$

	Number of cases (thousands)	Expressed as a proportion of total cases
<b>Total (from 5% sample Tabulation Tool)</b>	<b>44.4</b>	<b>1</b>
No dependants	24.1	0.543
1 dependant	10.7	0.241
2 dependants	7.1	0.16
3 dependants	2	0.045
4 dependants	* 0.3	0.007
5 dependants or more	* 0.1	0.002
Unknown	-	0

**Step 4** Apply these proportions to the caseload figure obtained from WPLS 100% data.

E.g. Total (WPLS) with 1 dependant  
 $= \text{proportion calculated at (3) above} \times \text{WPLS caseload}$   
 $= 0.241 \times 46.3$   
 $= 11.16 \text{ thousand}$

Thus the number of Bereavement Benefit claimants with 1 dependant at February 2003 is 11.16 thousand

	Proportion of total cases	Calculated WPLS Caseload (Thousands)
<b>Total</b>	<b>1</b>	<b>46.3</b>
No dependants	0.543	25.13
1 dependant	0.241	11.16
2 dependants	0.16	7.4
3 dependants	0.045	2.09
4 dependants	0.007	0.31
5 dependants or more	0.002	0.1
Unknown	0	.

**Important note: CLAIM DURATION**

For the majority of variables, the proportions obtained from the 5% and WPLS data are very similar. It is therefore deemed safe to apply the 5% proportions to the WPLS data.

However the distributions obtained for the **claim duration** variable differ between the two data sources. This is because information relating to many recently started claims is received too late for inclusion in the 5% sample data, but is included in the WPLS. The WPLS therefore includes a greater number of recently started claims and a greater proportion of claims of short duration (with compensating smaller proportions of cases in the longer duration bands).

Consequently, for some benefits, a time series of duration will show a sharp change in distribution, occurring between the last quarter for which 5% proportions are applied to WPLS totals, and the first quarter when duration information is obtainable from the WPLS.

A small number of variables related to duration will also be affected. These are:

**Incapacity Benefit (IB) - amount in payment, and IB rate in payment.** For IB, the rate of payment increases as the claim duration becomes longer. Compared to the 5% sample data, the WPLS records a greater number of recent claims and consequently a greater proportion of cases in the lower amount bands and short term rate.

**Income Support - age distribution.**

It is known that IS claimants in the youngest age band have shorter claim durations than claimants in older age bands. Because the WPLS is better able to record recent and short claims, the WPLS will consequently show an elevated proportion of younger claimants compared to 5% data.

## **Annex A**

### **WPLS data (based on 100% of cases) available on the Tabulation Tool**

#### **Attendance Allowance - cases in payment**

<b>Data available from:</b>	May 2002
<b>Analysis available for:</b>	Average weekly amount of benefit Caseload (Thousands)
<b>Breakdowns available:</b>	AA award type Age of claimant Duration of current claim (days) Gender of claimant Region Local Authority of claimant Main Disabling Condition Parliamentary Constituency of claimant (Westminster) Scottish Parliamentary Constituency of claimant Time Series

#### **Attendance Allowance – all entitled cases**

<b>Data available from:</b>	May 2002
<b>Analysis available for:</b>	Caseload (Thousands)
<b>Breakdowns available:</b>	AA award type Age of claimant Duration of current claim (days) Gender of claimant Region Local Authority of claimant Main Disabling Condition Parliamentary Constituency of claimant (Westminster) Scottish Parliamentary Constituency of claimant Time Series

**Bereavement Benefit**

<b>Data available from:</b>	May 2002
<b>Analysis available for:</b>	Average weekly amount of benefit Caseload (Thousands)
<b>Breakdowns available:</b>	Age of claimant Duration of current claim (days) Gender of claimant Region Local Authority of claimant Parliamentary Constituency of claimant (Westminster) Scottish Parliamentary Constituency of claimant Time Series Total weekly amount of benefit Type of BB Type of dependent

**Carer's Allowance - cases in payment**

<b>Data available from:</b>	August 2003
<b>Analysis available for:</b>	Average weekly amount of benefit Caseload (Thousands)
<b>Breakdowns available:</b>	Age of claimant Duration of current claim (days) Gender of claimant Region Local Authority of claimant Parliamentary Constituency of claimant (Westminster) Scottish Parliamentary Constituency of claimant Time Series Total weekly amount of benefit Working Age/Pension Age split

**Carer's Allowance – all entitled cases**

<b>Data available from:</b>	August 1999
<b>Analysis available for:</b>	Caseload (Thousands)
<b>Breakdowns available:</b>	Age of claimant Duration of current claim (days) Entitled/Receiving Payment Gender of claimant Region Local Authority of claimant Parliamentary Constituency of claimant (Westminster) Scottish Parliamentary Constituency of claimant Time Series Total weekly amount of benefit Working Age/Pension Age split

**Disability Living Allowance - cases in payment**

<b>Data available from:</b>	May 2002
<b>Analysis available for:</b>	Average weekly amount of benefit Caseload (Thousands)
<b>Breakdowns available:</b>	Age of claimant Care Award Type Duration of current claim (days) Gender of claimant Region Local Authority of claimant Mobility Award Type Parliamentary Constituency of claimant (Westminster) Scottish Parliamentary Constituency of claimant Time Series Working Age/Pension Age split

### **Disability Living Allowance – all entitled cases**

<b>Data available from:</b>	May 2002
<b>Analysis available for:</b>	Caseload (Thousands)
<b>Breakdowns available:</b>	Age of claimant Care Award Type Duration of current claim (days) Gender of claimant Region Local Authority of claimant Mobility Award Type Parliamentary Constituency of claimant (Westminster) Scottish Parliamentary Constituency of claimant Time Series Working Age/Pension Age split

### **Employment and Support Allowance**

<b>Data available from:</b>	November 2008
<b>Analysis available for:</b>	Average weekly amount of benefit Caseload (Thousands)
<b>Breakdowns available:</b>	Age of claimant Duration of current claim (days) Ethnicity of claimant Ethnicity of claimant - summary Gender of claimant IB ICD (disease) code IB ICD (disease) summary code Local Authority of claimant Parliamentary Constituency of claimant (Westminster) Region Scottish Parliamentary Constituency of claimant Time Series Total weekly amount of benefit

### **Incapacity Benefit**

<b>Data available from:</b>	August 1999
<b>Analysis available for:</b>	Average weekly amount of benefit Caseload (Thousands)
<b>Breakdowns available:</b>	Age of claimant Claimant/Beneficiary Duration of current claim (days) Gender of claimant Region IB ICD (disease) code IB ICD (disease) summary code IB rate in payment Local Authority of claimant Parliamentary Constituency of claimant (Westminster) Scottish Parliamentary Constituency of claimant Time Series Total weekly amount of benefit Type of dependent Working Age/Pension Age split

### **Incapacity Benefit/Severe Disablement Allowance - combined information**

<b>Data available from:</b>	August 1999
<b>Analysis available for:</b>	Average weekly amount of benefit Caseload (Thousands)
<b>Breakdowns available:</b>	Age of claimant Claimant/Beneficiary Duration of current claim (days) Gender of claimant Region IB ICD (disease) code IB ICD (disease) summary code IB rate in payment Local Authority of claimant Parliamentary Constituency of claimant (Westminster) Scottish Parliamentary Constituency of claimant Time Series Total weekly amount of benefit Type of dependent Working Age/Pension Age split

### **Income Support**

<b>Data available from:</b>	August 1999
<b>Analysis available for:</b>	Average weekly amount of benefit Caseload (Thousands)
<b>Breakdowns available:</b>	Age of claimant Age of youngest child dependant Duration of current claim (days) Gender of claimant Region Local Authority of claimant Number of children Parliamentary Constituency of claimant (Westminster) Partner flag Scottish Parliamentary Constituency of claimant Statistical Group Time Series Total weekly amount of benefit MIG/Non MIG Under 60/60 and over split

### **Jobseeker's Allowance**

<b>Data available from:</b>	August 1999
<b>Analysis available for:</b>	Average weekly amount of benefit
<b>Breakdowns available:</b>	Caseload (Thousands) Age of claimant Age of youngest child dependant Ethnicity of claimant Ethnicity of claimant - summary Gender of claimant Region Local Authority of claimant Number of children Parliamentary Constituency of claimant (Westminster) Partner flag Scottish Parliamentary Constituency of claimant Time Series Total weekly amount of benefit



### **Pension Credit**

<b>Data available from:</b>	November 2003
<b>Analysis available for:</b>	Average weekly amount of benefit Caseload – number of beneficiaries (Thousands) Caseload – number of claimants (Thousands)
<b>Breakdowns available:</b>	Age of claimant Duration of current claim (days) Gender of claimant Region Local Authority of claimant Parliamentary Constituency of claimant (Westminster) Partner flag Scottish Parliamentary Constituency of claimant Time Series Total weekly amount of benefit Type of Pension Credit

### **State Pension**

<b>Data available from:</b>	May 2002
<b>Analysis available for:</b>	Average weekly amount of benefit Caseload (Thousands)
<b>Breakdowns available:</b>	Age of claimant Category of pension Country code for abroad cases Gender of claimant Region Local Authority of claimant Parliamentary Constituency of claimant (Westminster) Scottish Parliamentary Constituency of claimant Time Series Total weekly amount of benefit Type of dependent

### **Widow's Benefit**

<b>Data available from:</b>	August 1999
<b>Analysis available for:</b>	Average weekly amount of benefit Caseload (Thousands)
<b>Breakdowns available:</b>	Age of claimant Duration of current claim (days) Region Local Authority of claimant Parliamentary Constituency of claimant (Westminster) Scottish Parliamentary Constituency of claimant Time Series Total weekly amount of benefit Type of dependent Type of WB

### **Client Group - All ages**

<b>Data available from:</b>	May 2002
<b>Analysis available for:</b>	Caseload (Thousands)
<b>Breakdowns available:</b>	Age of claimant Benefit combination Duration of oldest current claim (days) Gender of claimant Region Local Authority of claimant Parliamentary Constituency of claimant (Westminster) Partner flag Scottish Parliamentary Constituency of claimant Statistical Group Time Series

### **Pension Age Client Group**

<b>Data available from:</b>	May 2002
<b>Analysis available for:</b>	Caseload (Thousands)
<b>Breakdowns available:</b>	Age of claimant Benefit combination Gender of claimant Region Local Authority of claimant Parliamentary Constituency of claimant (Westminster) Pensioner Statistical Group Scottish Parliamentary Constituency of claimant Statistical Group Time Series

### **Working Age Client Group**

<b>Data available from:</b>	August 1999
<b>Analysis available for:</b>	Caseload (Thousands)
<b>Breakdowns available:</b>	Age of claimant Age of youngest child dependant Benefit combination Duration of oldest current claim (days) Gender of claimant Region Local Authority of claimant Number of children Parliamentary Constituency of claimant (Westminster) Partner flag Scottish Parliamentary Constituency of claimant Statistical Group Time Series

### **Working Age percentage of population (LA only)**

<b>Data available from/to:</b>	August 1999/February 2010
<b>Analysis available for:</b>	Percentage of population
<b>Breakdowns available:</b>	Age of claimant Age of youngest child dependant Duration of oldest current claim (days) Gender of claimant Local Authority of claimant Number of children Partner flag Statistical Group

### **Working Age percentage of population**

<b>Data available from/to:</b>	August 1999/February 2010
<b>Analysis available for:</b>	Percentage of population
<b>Breakdowns available:</b>	Age of claimant Age of youngest child dependant Benefit combination Caseload (Thousands) Duration of oldest current claim (days) Gender of claimant Government Office Region Number of children Partner flag Statistical Group Time Series

## **Annex B**

### **5% sample data available on the Tabulation Tool**

#### **Attendance Allowance**

<b>Data available from:</b>	November 1995
<b>Analysis available for:</b>	Caseload (Thousands)
<b>Breakdowns available:</b>	Age Care Rate Gender Region Local Authority Main Disabling Condition Parliamentary Constituency Time Series

#### **Bereavement Benefit**

<b>Data available from:</b>	September 2001
<b>Analysis available for:</b>	Caseload (Thousands) Weekly amount in payment (£ per week)
<b>Breakdowns available:</b>	Age Dependant increase Gender Region Local Authority Number of dependants Time Series Type of BB Weekly amount in payment (£ per week)

#### **Disability Living Allowance**

<b>Data available from:</b>	November 1995
<b>Analysis available for:</b>	Caseload (Thousands)
<b>Breakdowns available:</b>	Age Care Rate Duration Gender Region Local Authority Main Disabling Condition Mobility Rate Parliamentary Constituency Time Series

### **Incapacity Benefit**

<b>Data available from:</b>	May 1995
<b>Analysis available for:</b>	Caseload (Thousands) Weekly amount in payment (£ per week)
<b>Breakdowns available:</b>	Age Claimant or beneficiary Diagnosis group Duration Gender Region Local Authority Parliamentary Constituency Partner Time Series Type of IB

### **Incapacity Benefit - Working Age claimants**

<b>Data available from:</b>	May 1995
<b>Analysis available for:</b>	Caseload (Thousands) Weekly amount in payment (£ per week)
<b>Breakdowns available:</b>	Age Claimant or beneficiary Diagnosis group Duration Gender Region Local Authority Parliamentary Constituency Partner Time Series Type of IB

**Incapacity Benefit/Severe Disablement Allowance combined information**

**Data available from:** May 1995  
**Analysis available for:** Caseload (Thousands)  
Weekly amount in payment (£ per week)  
**Breakdowns available:** Age  
Claimant or beneficiary  
Diagnosis group  
Duration  
Gender  
Region  
Local Authority  
Parliamentary Constituency  
Partner  
Time Series  
Type of IB/SDA

**Incapacity Benefit/Severe Disablement Allowance combined - Working Age claimants**

**Data available from:** May 1995  
**Analysis available for:** Caseload (Thousands)  
Weekly amount in payment (£ per week)  
**Breakdowns available:** Age  
Claimant or beneficiary  
Diagnosis group  
Duration  
Gender  
Region  
Local Authority  
Parliamentary Constituency  
Partner  
Time Series  
Type of IB/SDA

### **Income Support Claimant Information**

<b>Data available from:</b>	May 1997
<b>Analysis available for:</b>	Caseload (Thousands) Weekly amount in payment (£ per week)
<b>Breakdowns available:</b>	Age Child dependants Duration Family Type Gender Region Housing Requirements Local Authority Number of dependants Parliamentary Constituency Partner Special Circumstances Statistical Group Time Series

### **Jobseeker's Allowance Claimant Information**

<b>Data available from:</b>	May 1997
<b>Analysis available for:</b>	Caseload (Thousands) Weekly amount in payment (£ per week)
<b>Breakdowns available:</b>	Age Child dependants Duration Family Type Gender Region Housing Requirements Income Based JSA Local Authority Number of dependants Parliamentary Constituency Partner Time Series Type of JSA

### **Pension Credit Claimant Information**

<b>Data available from:</b>	November 2003
<b>Analysis available for:</b>	Caseload (Thousands) Weekly amount in payment (£ per week)
<b>Breakdowns available:</b>	Age Duration Family Type Gender Region Local Authority Special Circumstances Time Series Type of Pension Credit

### **Severe Disablement Allowance**

<b>Data available from:</b>	May 1995
<b>Analysis available for:</b>	Caseload (Thousands) Weekly amount in payment (£ per week)
<b>Breakdowns available:</b>	Age Claimant or beneficiary Diagnosis group Duration Gender Region Local Authority Parliamentary Constituency Partner Time Series



### **Severe Disablement Allowance - Working Age claimants**

<b>Data available from:</b>	May 1995
<b>Analysis available for:</b>	Caseload (Thousands) Weekly amount in payment (£ per week)
<b>Breakdowns available:</b>	Age Claimant or beneficiary Diagnosis group Duration Gender Region Local Authority Parliamentary Constituency Partner Time Series

### **State Pension**

<b>Data available from:</b>	March 1995
<b>Analysis available for:</b>	Caseload (Thousands) Weekly amount in payment (£ per week)
<b>Breakdowns available:</b>	Age Category of Pension Amount of Basic State Pension (%) Country (detailed) Country summary Gender Region Increments flag Local Authority Time Series Type of dependant increase Weekly amount in payment (£ per week)

### **Widow's Benefit**

<b>Data available from:</b>	March 1995
<b>Analysis available for:</b>	Caseload (Thousands) Weekly amount in payment (£ per week)
<b>Breakdowns available:</b>	Age Dependant increase Region Local Authority Number of dependants Time Series Type of WB Weekly amount in payment (£ per week)

### **Client Group Analysis of Children in Working Age families on benefit**

<b>Data available from/to:</b>	May 1995/August 2007
<b>Analysis available for:</b>	Caseload (Thousands)
<b>Breakdowns available:</b>	Age of dependant child Benefit Combination Benefit entitlement route Duration on oldest current benefit Family Type Government Office Region Local Authority Number of child dependants Out-of-work statistical group Parliamentary Constituency Statistical Group Time Series

### **Children in Working Age families on benefit - Percentage of Population**

<b>Data available from/to:</b>	May 1995/August 2007
<b>Analysis available for:</b>	Percentage of population
<b>Breakdowns available:</b>	Age Benefit Combination Benefit entitlement route Duration on oldest current benefit Family Type Government Office Region Out-of-work statistical group Statistical Group Time Series

**Children in Working Age families on benefit - Percentage of Population  
LA only**

**Data available from/to:** May 1995/August 2007  
**Analysis available for:** Percentage of Population  
**Breakdowns available:** Age  
Benefit Combination  
Benefit entitlement route  
Duration on oldest current benefit  
Family Type  
Local Authority  
Out-of-work statistical group  
Statistical Group

**Client Group analysis of Working Age families with children**

**Data available from/to:** May 1995/August 2007  
**Analysis available for:** Caseload (Thousands)  
**Breakdowns available:** Age of claimant  
Age of youngest child  
Benefit Combination  
Benefit entitlement route  
Duration on oldest current benefit  
Family Type  
Gender of claimant  
Government Office Region  
Local Authority  
Number of child dependants  
Out-of-work statistical group  
Parliamentary Constituency  
Statistical Group  
Time Series

### **Client Group analysis of the Working Age**

**Data available from/to:** May 1995/August 2008  
**Analysis available for:** Caseload (Thousands)  
**Breakdowns available:** Age  
Benefit Combination  
Benefit entitlement route  
Duration on oldest current benefit  
Family Type  
Gender  
Government Office Region  
Local Authority  
Number of child dependants  
Out-of-work statistical group  
Parliamentary Constituency  
Statistical Group  
Time Series

### **Working Age benefit claimants - Percentage of population**

**Data available from/to:** May 1995/August 2008  
**Analysis available for:** Percentage of Population  
**Breakdowns available:** Age  
Benefit Combination  
Benefit entitlement route  
Duration on oldest current benefit  
Family Type  
Gender  
Government Office Region  
Number of child dependants  
Out-of-work statistical group  
Statistical Group  
Time Series

**Working Age benefit claimants - Percentage of population LA only**

**Data available from/to:** May 1995/August 2008  
**Analysis available for:** Percentage of population  
**Breakdowns available:** Age  
Benefit Combination  
Benefit entitlement route  
Duration on oldest current benefit  
Family Type  
Gender  
Local Authority  
Number of child dependants  
Out-of-work statistical group  
Statistical Group

**Pension Age Client Group**

**Data available from/to:** May 1996/May 2008  
**Analysis available for:** Caseload (Thousands)  
**Breakdowns available:** Age  
Benefit combination  
Gender  
Government Office Region  
Local Authority  
Parliamentary Constituency  
Statistical Group  
Time Series  
Type of dependant