

HIGH SPEED RAIL (LONDON - WEST MIDLANDS)

Supplementary Environmental Statement 3 and
Additional Provision 4 Environmental Statement

Volume 2 | Community forum area map book
CFA11 Stoke Mandeville and Aylesbury

October 2015

SES3 and AP4 ES 3.2.2.11

HIGH SPEED RAIL (LONDON - WEST MIDLANDS)

Supplementary Environmental Statement 3 and
Additional Provision 4 Environmental Statement

Volume 2 | Community forum area map book
CFA11 Stoke Mandeville and Aylesbury

October 2015

SES3 and AP4 ES 3.2.2.11



Department
for Transport

High Speed Two (HS2) Limited has been tasked by the Department for Transport (DfT) with managing the delivery of a new national high speed rail network. It is a non-departmental public body wholly owned by the DfT.

A report prepared for High Speed Two (HS2) Limited:

AECOM

ARUP

ATKINS

CAPITA



ineco



**PARSONS
BRINCKERHOFF**



High Speed Two (HS2) Limited,
One Canada Square,
London
E14 5AB

Details of how to obtain further copies are available from HS2 Ltd.

Telephone: 020 7944 4908

General email enquiries: HS2enquiries@hs2.org.uk

Website: www.gov.uk/hs2

Copyright © High Speed Two (HS2) Limited, 2015, except where otherwise stated.

High Speed Two (HS2) Limited has actively considered the needs of blind and partially sighted people in accessing this document. The text will be made available in full via the HS2 website. The text may be freely downloaded and translated by individuals or organisations for conversion into other accessible formats. If you have other needs in this regard please contact High Speed Two (HS2) Limited.



Printed in Great Britain on paper
containing at least 75% recycled fibre.

Contents

Mapping explanatory notes

Data dictionary and definitions

Map series name	Map series description
CT-05 – Construction Phase	These maps show the land potentially required during construction, the construction features, access requirements and infrastructure associated with construction of the Proposed Scheme. The maps also show the construction phase arrangements for public access using Public Rights of Way. The base mapping shown on the maps is reflective of 2015 Ordnance Survey (OS) data.
CT-06 – Proposed Scheme	These maps show permanent features, infrastructure, restored land, and areas for landscaping, screening and ecological mitigation associated with the Proposed Scheme. The base mapping shown on the maps is reflective of 2015 Ordnance Survey (OS) data.
LV-01 – Photomontages	Photomontages illustrating the Proposed Scheme during construction and/or operation.

Mapping explanatory notes

Structure of the HS2 Supplementary Environmental Statement 3 and Additional Provision 4 Environmental Statement

The Supplementary Environmental Statement 3 (SES3) and Additional Provision 4 Environmental Statement (AP4 ES) comprises:

- Non-technical summary (NTS). This provides a summary in non-technical language of the SES3 (Part 1) and AP4 ES (Part 2) and of any likely significant environmental effects, both beneficial and adverse, which are new or different to those reported in the High Speed 2 (HS2) Phase One Environmental Statement (ES) submitted to Parliament in November 2013 in support of the hybrid Bill ('the Bill') for Phase One of HS2 (hereafter referred to as 'the main ES') as updated by subsequent SES and AP ES documents;
- Volume 1: Introduction to the SES3 and AP4 ES. This introduces the supplementary environmental information and design changes included within the SES3 and amendments, which have resulted in the need to amend the Bill, within the AP4 ES. It also explains any changes to the scope, methodology, assumptions and limitations required for the environmental assessment;
- Volume 2: CFA reports and Map Books. These describe the supplementary environmental information and design changes included within the SES3 (Part 1) and amendments within the AP4 ES (Part 2). Any new or different likely significant environmental effects arising from these changes and amendments in each CFA, compared to those reported in the main ES, as updated by SES and SES2 documents (and SES3 for the AP4 amendments) are reported. The AP1, AP2 and AP3 amendments are also taken into account where relevant. In addition, the main local alternatives that have been considered are described, where relevant;
- Volume 3: Route-wide effects. This reports new or different likely significant route-wide effects arising from the supplementary environmental information and design changes included within the SES3 (Part 1) and amendments within the AP4 ES (Part 2) compared to those reported in the main ES as updated by SES and SES2 (and SES3 for the AP4 amendments). The AP1, AP2 and AP3 amendments are also taken into account where relevant;
- Volume 4: Off-route effects. This reports new or different likely significant off-route effects arising from the supplementary environmental information included within the SES3 and an amendment within the AP4 ES compared to those reported in the main ES as updated by SES and SES2 (and SES3 for the AP4 amendment). The AP1, AP2 and AP3 amendments are also taken into account where relevant;
- Volume 5: Appendices and Map Books. This contains environmental information and associated maps in support of the other volumes of the SES3 and AP4 ES; and
- Glossary of terms and list of abbreviations. This contains any new or different terms and abbreviations used throughout the SES and AP ES reports, compared to those included in the main ES.

Copyright statements

Copyright statements are presented in the Data dictionary and definitions section at the front of the map book, due to limited space to include this on the individual maps themselves.

Ordnance Survey data

All maps produced as part of the SES3 and AP4 ES contain Ordnance Survey (OS) data. HS2 Ltd use the most up to date mapping available, where possible, supplied by the OS and as such, we cannot be held responsible for any inaccuracies within this data.

As part of our licence conditions, all digital maps carry a watermark.

Chainage

Most of the maps presented as part of the SES3 and AP4 ES have a chainage value shown next to the alignment. Chainage is presented on the maps in black font, in the form of XX+YYY. E.g. 77+000 or 158+500.

Chainage (known as reference chainage) is referenced from Euston Station, which is 0+000, and the value presented is in metres. E.g. 77+000 refers to the point, 77,000m, or 77km, from Euston Station. Chainage values increase in intervals dependant on the map scale. For maps at 1:50,000 scale chainage is shown at 5km intervals. For maps at 1:25,000 scale chainage is shown at 2km intervals. For maps at 1:10,000, 1:5,000 and 1:2,500 scales, chainage is shown at 1km intervals.

Chainage has been included on the maps as a useful tool for comparing different map sets showing the different environmental themes or engineering plans, due to map sets having different scales and therefore showing differing amounts of alignment on the map.

Map sheet layout

Each map in Volume 2 is presented twice, with the main ES map (published November 2013) on the left hand page and the SES₃ and AP₄ ES map on the right. For the CT-05 and CT-06 map series, the SES₃ and AP₄ ES map is annotated with different coloured clouds which highlight the areas of change. The coloured text box provides a brief description of the design change and amendment, and gives the SES₃ and AP₄ ES reference number. Only maps which have been amended as a result of the SES₃ and AP₄ ES are included within the map books. Other design changes which are within the existing limits of the Bill and do not result in new or different likely significant effects are also shown on the maps, but are not indicated by a cloud. The below table highlights the coloured clouds used, and their description.

Cloud / text box colour	Description
Blue	Design changes relating to the SES ₃ (Part 1 of each Volume 2 CFA report).
Red	Proposed amendments relating to AP ₄ (Part 2 of each Volume 2 CFA report).
Grey	Proposed amendments and design changes relating to previous APs and SESs, provided for reference.

Each Volume 5 map is annotated to describe the change to a receptor or significant effect, and to give the SES₃ and AP₄ ES reference number. For more detailed information about the SES₃ and AP₄ ES annotation, refer to the map series legend. Only maps which have been amended as a result of the SES₃ and AP₄ ES are included within the map book. Changes to receptors or significant effects relating to previous APs and SESs are also provided for reference.

Map orientation

The majority of the maps presented in these map books are presented with the railway alignment running horizontally across the page. The direction of travel to London would be following the alignment to the right hand side of the page, and the West Midlands to the left.

The exception to this, are map series LV-03 and LV-04, which present the alignment running from bottom to top of the page. This is to allow more of the modelled outputs to be shown at the appropriate map scale. In this instance, the direction of travel to London would be to the bottom of the page, and the West Midlands to the top.

Map books

In total there are 35 map books which make up the SES₃ and AP₄ ES, spread across volumes 2, 4 and 5. A list of the titles is provided below for reference.

Name	Name
Volume 2 Community forum area map book: CFA ₄ Kilburn (Brent) to Old Oak Common	Volume 2 Community forum area map book: CFA ₂₃ Balsall Common and Hampton-in-Arden
Volume 2 Community forum area map book: CFA ₅ Northolt Corridor	Volume 2 Community forum area map book: CFA ₂₄ Birmingham Interchange and Chelmsley Wood
Volume 2 Community forum area map book: CFA ₆ South Ruislip to Ickenham	Volume 2 Community forum area map book: CFA ₂₅ Castle Bromwich and Bromford
Volume 2 Community forum area map book: CFA ₇ Colne Valley	Volume 2 Community forum area map book: CFA ₂₆ Washwood Heath to Curzon Street
Volume 2 Community forum area map book: CFA ₈ The Chalfonts and Amersham	Volume 4 Off-route effects map book
Volume 2 Community forum area map book: CFA ₉ Central Chilterns	Volume 5 Technical appendices map book: Agriculture, forestry and soils
Volume 2 Community forum area map book: CFA ₁₀ Dunsmore, Wendover and Halton	Volume 5 Technical appendices map book: Air quality
Volume 2 Community forum area map book: CFA ₁₁ Stoke Mandeville and Aylesbury	Volume 5 Technical appendices map book: Community
Volume 2 Community forum area map book: CFA ₁₂ Waddesdon and Quainton	Volume 5 Technical appendices map book: Cultural heritage
Volume 2 Community forum area map book: CFA ₁₃ Calvert, Steeple Claydon, Twyford and Chetwode	Volume 5 Technical appendices map book: Ecology
Volume 2 Community forum area map book: CFA ₁₄ Newton Purcell to Brackley	Volume 5 Technical appendices map book: Land quality
Volume 2 Community forum area map book: CFA ₁₅ Greatworth to Lower Boddington	Volume 5 Technical appendices map book: Landscape and visual
Volume 2 Community forum area map book: CFA ₁₆ Ladbroke and Southam	Volume 5 Technical appendices map book: Socio-economics
Volume 2 Community forum area map book: CFA ₁₇ Offchurch and Cubbington	Volume 5 Technical appendices map book: Sound, noise and vibration
Volume 2 Community forum area map book: CFA ₁₈ Stoneleigh, Kenilworth and Burton Green	Volume 5 Technical appendices map book: Traffic and transport
Volume 2 Community forum area map book: CFA ₁₉ Coleshill Junction	Volume 5 Technical appendices map book: Water resources
Volume 2 Community forum area map book: CFA ₂₀ Curdworth to Middleton	Volume 5 Technical appendices map book: Cross-topic appendix 1 - Committed developments
Volume 2 Community forum area map book: CFA ₂₂ Whittington to Handsacre	

HIGH SPEED RAIL (LONDON - WEST MIDLANDS)

Supplementary Environmental Statement 3 and
Additional Provision 4 Environmental Statement

Volume 2 | Data dictionary and definitions

October 2015

Data dictionary and definitions

Legend features	Definition	Source	Copyright
Balancing pond	The proposed location and extent of balancing ponds for drainage attenuation and infiltration. Outer boundary represents the perimeter.	High Speed Two (HS2) Ltd	
Chainage	<p>Chainage (known as reference chainage) is referenced from Euston Station, which is 0+000, and the value presented is in metres. E.g. 77+000 refers to the point, 77,000m, or 77km, from Euston Station. Chainage values increase in intervals dependant on the map scale. For maps at 1:50,000 scale chainage is shown at 5km intervals. For maps at 1:25,000 scale chainage is shown at 2km intervals. For maps at 1:10,000, 1:5,000 and 1:2,500 scale chainage is shown at 1km intervals.</p> <p>Chainage has been included on the maps as a useful tool for comparing different map sets showing the different environmental themes or engineering plans, due to map sets having different scales and therefore showing differing amounts of alignment on the map.</p>	High Speed Two (HS2) Ltd	
Community forum boundary	The Environmental Statement has been split into 26 sections called Community Forum Areas.	High Speed Two (HS2) Ltd	© Crown copyright. Reproduced by permission of Ordnance Survey Licence Number 100049190. Year of Publication 2015.
Construction traffic route	Public highways which may be used for HGV construction traffic.	High Speed Two (HS2) Ltd	
County boundary	County boundaries from Ordnance Survey boundary mapping.	Ordnance Survey	© Crown copyright. Reproduced by permission of Ordnance Survey Licence Number 100049190. Year of Publication 2015.
Depot, station, headhouse or portal building	Extends to cover operational footprint of each depot and station and the footprint of each tunnel vent shaft and headhouse at surface level. Excludes any ancillary buildings associated with these structures.	High Speed Two (HS2) Ltd	
District/Borough boundary	Ordnance Survey local authority boundary mapping.	Ordnance Survey	© Crown copyright. Reproduced by permission of Ordnance Survey Licence Number 100049190. Year of Publication 2015.
Ditches – new	The proposed location and extent of drainage ditches.	High Speed Two (HS2) Ltd	
Ecological mitigation pond	Ponds whose primary function is to provide ecological mitigation. This could be a standalone pond or part of a wider wetland habitat creation plan.	High Speed Two (HS2) Ltd	
Electricity substation	Includes all auto-transformers and feeder stations.	High Speed Two (HS2) Ltd	
Engineering earthworks	Engineering (structural) earthworks which include railway slopes and crossings (roads etc.).	High Speed Two (HS2) Ltd	
Existing public right of way (PRoW)	See Public Rights of Way.	See Public Rights of Way.	See Public Rights of Way.
Existing watercourse	See Watercourse.	See Watercourse.	See Watercourse.
Grassed areas	Any other area grassed not included in landscaped earthworks or ecological habitat.	High Speed Two (HS2) Ltd	
Grassland habitat creation	Soft landscape design that can include any seeded areas for the purpose of creating grassland except for the engineering earthworks.	High Speed Two (HS2) Ltd	
Hedgerow habitat creation	Ecological mitigation to provide new hedgerow planting,	High Speed Two (HS2) Ltd	

Legend features	Definition	Source	Copyright
	connectivity enhancements to existing areas and areas for ecological management. This level does not include screening planting for visual mitigation purposes.		
HS2 Access road	Access road to HS2 infrastructure such as electricity substations, balancing ponds and maintenance access points to the railway.	High Speed Two (HS2) Ltd	
Land drainage area	Provision of land to attenuate or infiltrate overland flows at or beyond the HS2 railway boundaries; for example, where existing land drainage systems are altered by the HS2 works, where the existing landform is reshaped by landscape earthworks or where surface water from third party land is intercepted by the HS2 perimeter drainage system.	High Speed Two (HS2) Ltd	
Land potentially required during construction	Boundary defining the maximum possible extent of construction works required to build HS2 as far as the current level of design allows. This only covers surface works and includes all tunnel portals, vent shafts and headhouses, but does not apply to wholly tunnelled sections or to air rights. It also encompasses associated highway, access, drainage and utility works.	High Speed Two (HS2) Ltd	
Landscape earthworks	Landscape earthworks to provide permanent landscape, visual or acoustic mitigation.	High Speed Two (HS2) Ltd	
Landscape mitigation planting (scrub / woodland)	Screening planting, using woodland, for visual mitigation and landscape integration purposes.	High Speed Two (HS2) Ltd	
Main construction compound	Main Construction Compounds in which main contractors offices and welfare facilities will be located.	High Speed Two (HS2) Ltd	
Main utility works	Represents all new major utility installations (included in the hybrid Bill) and also modifications to existing utilities required to construct the scheme. Includes water, electricity, telecommunications and gas.	High Speed Two (HS2) Ltd	
New, diverted or realigned PRoW	New, realigned or diverted Public Rights of Way (PRoW).	High Speed Two (HS2) Ltd	
Noise fence barrier	Denotes fence-style barriers provided as part of the noise mitigation measures. Note that other noise barriers have also been included in the form of landscaping and engineering cuttings - see the SV map series for more detail on noise mitigation.	High Speed Two (HS2) Ltd	
Public realm/Replacement community facility	Public realm: Specifically provided to show areas to be used for public realm. This layer is mainly associated with station sites and is to be used to indicate general areas for designed soft and hard landscaping. Replacement community facility: Area of land for the provision of a permanent replacement community facility, such as a playground, community centre or activity centre.	High Speed Two (HS2) Ltd	
Public Rights of Way	Public rights of way are highways which can be used for the following purposes: - Footpaths - pedestrians only - Bridleways - pedestrians, cyclists and equestrians - Restricted byways - as bridleways plus non-motorised vehicles - Byways open to all traffic. Definitive Map data supplied by surveying authorities (i.e. county	Buckinghamshire County Council Birmingham City Council Coventry City Council City of Westminster Hertfordshire County Council London Borough of Brent London Borough of Camden	© Crown copyright. Reproduced by permission of Ordnance Survey Licence Number 100049190. Year of Publication 2015. This map is based upon Ordnance Survey material with the permission of Ordnance Survey on behalf of the Controller of Her Majesty's Stationary Office © Crown

Legend features	Definition	Source	Copyright
	councils, London Boroughs and metropolitan borough councils in the West Midlands).	London Borough of Ealing London Borough of Hammersmith & Fulham London Borough of Hillingdon Northamptonshire County Council Oxfordshire County Council Royal Borough of Kensington & Chelsea Solihull Metropolitan Borough Council Staffordshire County Council Warwickshire County Council	Copyright. Unauthorised reproduction infringes Crown Copyright and may lead to prosecution or civil proceedings. Buckinghamshire County Council Licence No. 100021529, 2012. Copyright Buckinghamshire County Council. © Copyright Coventry City Council © Northamptonshire County Council
Rail alignment	Longitudinal geometry of the tracks consisting of a series of straights and curves.	High Speed Two (HS2) Ltd	
Rail alignment formation	The space required to accommodate the railway infrastructure which typically includes the tracks, overhead line equipment, drainage, lineside access paths and cable routes for electrification and communication systems.	High Speed Two (HS2) Ltd	
Replacement floodplain storage	Provision of storage to replace floodplain occupied by the Proposed Scheme. Equivalent storage is provided for events up to the 1 in 100 (1%) annual probability event with an allowance for climate change.	High Speed Two (HS2) Ltd	
Returned to suitable development use	Post construction land will be reinstated to enable potential future development.	High Speed Two (HS2) Ltd	
Satellite construction compound	Represents satellite construction compounds which serve local works for major construction elements within a main contract.	High Speed Two (HS2) Ltd	
Stopped-up PRoW	Public rights of way that will be closed due to construction of the scheme.	High Speed Two (HS2) Ltd	
Sustainable placement	Sustainable placement: the on-site placement for disposal of surplus excavated material to avoid causing environmental effects (e.g. transport) that would otherwise be associated with the off-site disposal of that material. "On-site" in this context means within the land required for the purposes of the Proposed Scheme and "off-site" means external land (or landfill site) which is not specifically required for the purposes of the Proposed Scheme.	High Speed Two (HS2) Ltd	
Temporary highway diversion / realignment	Indicative temporary highway diversion layouts during the construction phase.	High Speed Two (HS2) Ltd	
Temporary material stockpile	Represents temporary stockpiling of topsoil, subsoil and other excavated materials to be used for reinstatement purposes, and also stockpile areas for managing movement of excavated materials during construction.	High Speed Two (HS2) Ltd	
Temporary PRoW diversion / realignment	Indicative temporary diversions to public rights of way as a result of construction of the scheme. These will vary depending on construction phase and local conditions.	High Speed Two (HS2) Ltd	
Temporary replacement community facility	Area of land for the provision of a temporary replacement community facility, such as a playground, community centre or activity centre, whilst construction works are in progress.	High Speed Two (HS2) Ltd	
Tunnel portal	The footprint of a tunnel portal.	High Speed Two (HS2) Ltd	
Tunnels external extent	The external excavated extent of each tunnel bore.	High Speed Two (HS2) Ltd	
Watercourse	The Detailed River Network (DRN) is the only large-scale, accurate and fully attributed digital river centreline covering	Environment Agency	© Environment Agency copyright and/or database right 2015. All rights reserved.

Legend features	Definition	Source	Copyright
	England and Wales.		
Watercourse diversion	Includes rivers, streams, ditches and other open channels, diversions to these, together with any new culverts required.	High Speed Two (HS2) Ltd	
Wetland habitat creation	Ecological mitigation area to provide new wetland habitat creation, enhancements to existing areas and areas for ecological management. This level does not include screening planting for visual mitigation purposes.	High Speed Two (HS2) Ltd	
Woodland habitat creation	Ecological mitigation area to provide new woodland planting, connectivity enhancements to existing areas and areas for ecological management. This level does not include screening planting for visual mitigation purposes.	High Speed Two (HS2) Ltd	

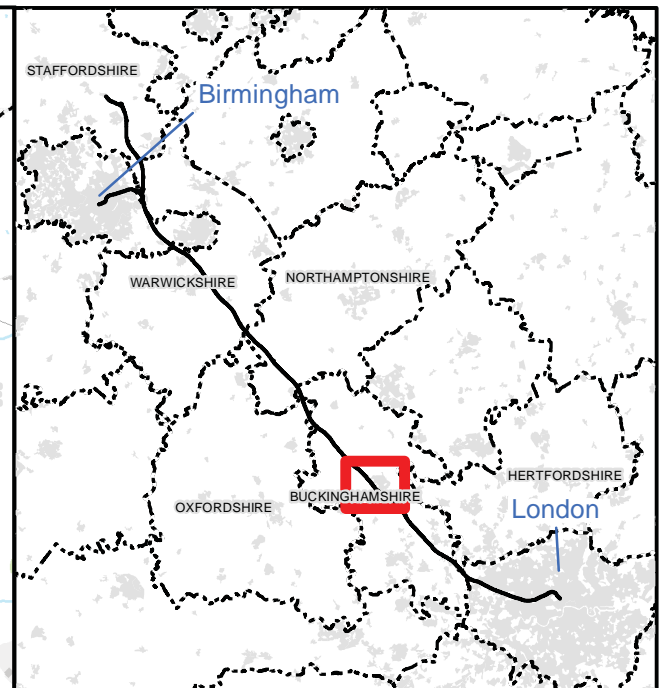
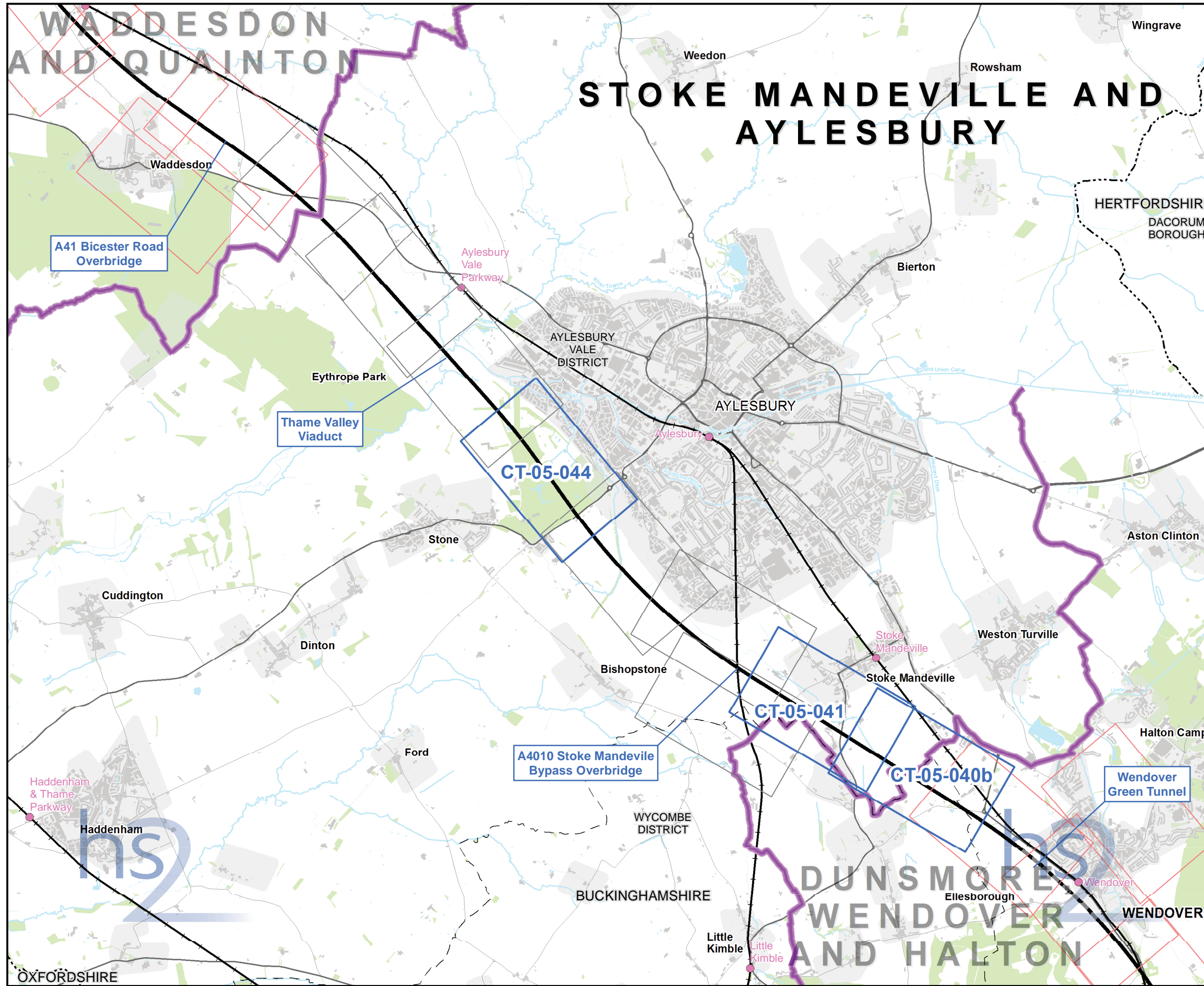
This page is left intentionally blank

HIGH SPEED RAIL (LONDON - WEST MIDLANDS)

Supplementary Environmental Statement 3 and
Additional Provision 4 Environmental Statement

Volume 2 | CT-05 - Construction Phase
CT-06 - Proposed Scheme

October 2015



Map Series Information:

These plans show the land potentially required during construction, the construction features, access requirements and infrastructure associated with construction of the Proposed Scheme. The plans also show the construction phase arrangements for public access using Public Rights of Way.

The base mapping shown on the plans is reflective of 2015 Ordnance Survey (OS) data.

Main Map Legend

- Route in tunnel
- Route on surface
- Depot, station, headhouse or portal building
- Community forum boundary
- Existing railway station
- County boundary
- District/Borough boundary
- Map sheets included in this community forum with amendment
- Map sheets included in this community forum with no amendment
- Map sheets not included in this community forum

Map Number: CT-05-INDEX-CFA11

Map Name: Index Map of: Construction Phase SES3 and AP4 ES

Community Forum Area: CFA11 Stoke Mandeville and Aylesbury

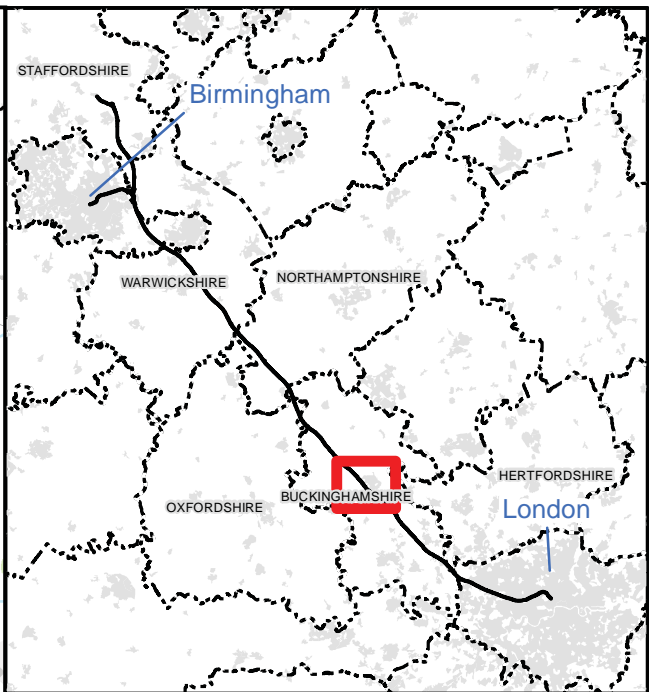
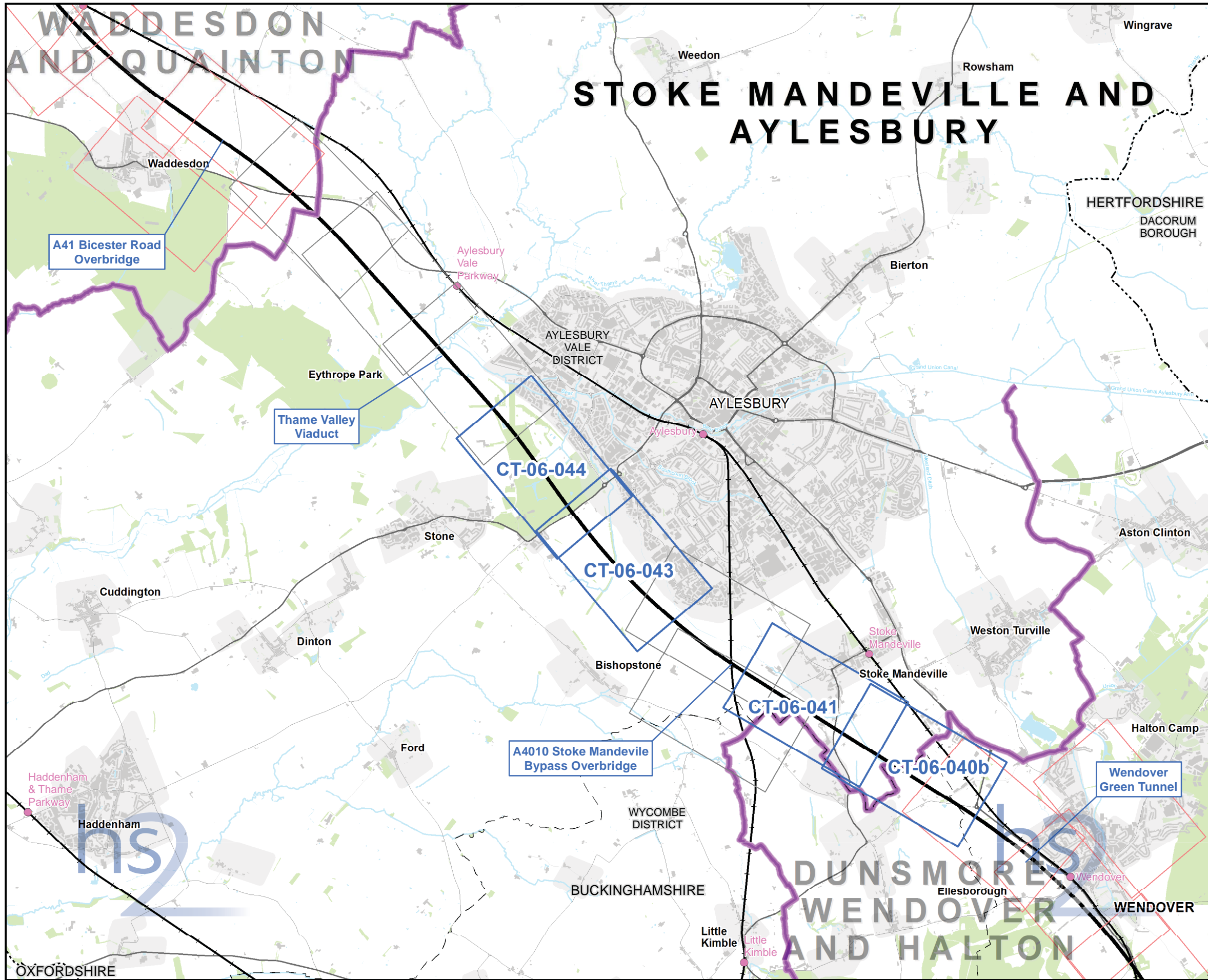
HS2 Ltd accept no responsibility for any circumstances, which arise from the reproduction of this map after alteration, amendment or abbreviation or if it is issued in part or issued incomplete in any way.

Registered in England. Registration number 06791686. Registered office: One Canada Square, London, E14 5AB.

Scale at A3: 1:50,000

© Crown copyright and database rights 2015. Ordnance Survey Licence Number 100049190.

Doc Number: C250-ARP-EV-MAP-000-002031-AP04-P01 Date: 15/09/15



Map Series Information:

These maps show permanent features, infrastructure, restored land, and areas for landscaping, screening and ecological mitigation associated with the Proposed Scheme.

The base mapping shown on the plans is reflective of 2015 Ordnance Survey (OS) data.

Main Map Legend

Route in tunnel	Map sheets included in this community forum with amendment
Route on surface	Map sheets included in this community forum with no amendment
Depot, station, headhouse or portal building	Map sheets not included in this community forum
Community forum boundary	
Existing railway station	
County boundary	
District/Borough boundary	

Map Number	CT-06-INDEX-CFA11
Map Name	Index Map of: Proposed Scheme SES3 and AP4 ES Community Forum Area: CFA11 Stoke Mandeville and Aylesbury

HS2 Ltd accept no responsibility for any circumstances, which arise from the reproduction of this map after alteration, amendment or abbreviation or if it is issued in part or issued incomplete in any way.

Registered in England. Registration number 06791686.
Registered office: One Canada Square, London, E14 5AB.

Scale at A3: 1:50,000

© Crown copyright and database rights 2015
Ordnance Survey Licence Number 100049190.

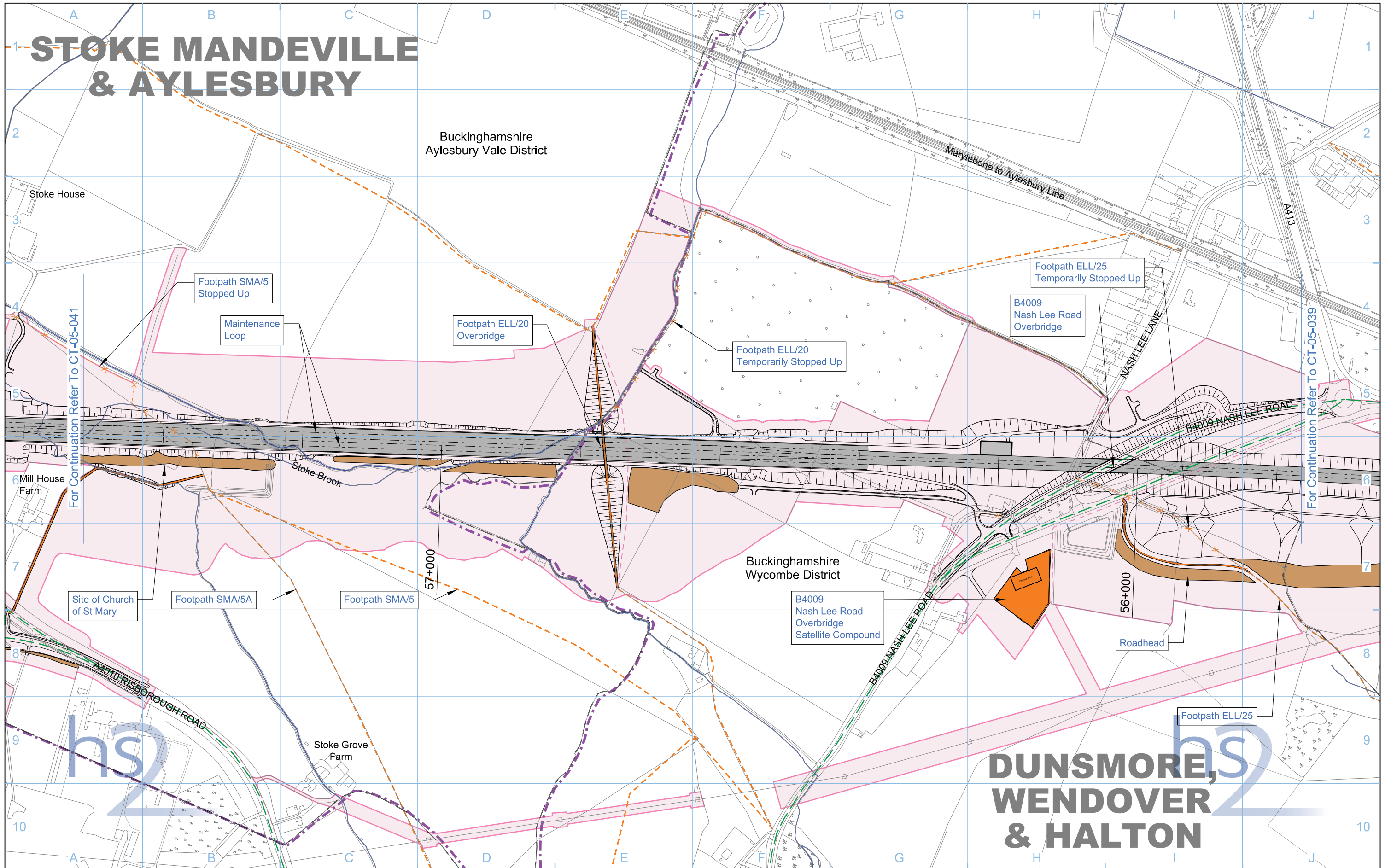
Doc Number: C250-ARP-EV-MAP-000-002007-AP04-P01 Date: 16/09/15

STOKE MANDEVILLE & AYLESBURY

Buckinghamshire
Aylesbury Vale District

Buckinghamshire
Wycombe District

DUNSMORE, WENDOVER & HALTON



Legend	
	Rail alignment formation
	Depot, station, headhouse or portal building
	Tunnel portal
	Main construction compound
	Satellite construction compound
	Temporary material stockpile
	Rail alignment
	Landscape earthworks
	Engineering earthworks
	County boundary
	Borough / District boundary
	Land potentially required during construction
	Existing watercourse
	Tunnels external extent
	Construction traffic route
	Existing public right of way (PRoW)
	New, diverted or realigned PRoW
	Community forum boundary
	Stopped-up PRoW
	Temporary PRoW diversion / realignment
	Temporary highway diversion / realignment
	UT - Main utility works
	Chainage (e.g. 10+000)
	Rail alignment

Map Number	CT-05-040b
Map Name	Construction Phase
Community Forum Area	CFA11 Stoke Mandeville and Aylesbury

hs2

HS2 Ltd accept no responsibility for any circumstances, which arise from the reproduction of this map after alteration, amendment or abbreviation or if it is issued in part or issued incomplete in any way.

Registered in England, Registration number 06791686
Registered office: Eland House, Bressenden Place, London SW1E 5DU

Scale at A3: 1:5,000

0 50 100 150 200 250 Metres

© Crown copyright and database rights 2013. Ordnance Survey Licence Number 100049190.

Doc Number: C222-ATK-EV-DPL-020-051101 P03 Date: 22/10/13

STOKE MANDEVILLE & AYLESBURY

Buckinghamshire
Aylesbury Vale District

Marylebone to Aylesbury Line

A113

AP1-010-005: Land required for reconfigured road layout

Footpath ELL/25
Temporarily Stopped Up

B4009
Nash Lee Road
Overbridge

Footpath SMA/5
Stopped Up

Maintenance
Loop

Footpath ELL/20
Overbridge

Footpath ELL/20
Temporarily Stopped Up

For Continuation Refer To CT-05-041

For Continuation Refer To CT-05-039

Stoke House

6 Mill House Farm

Stoke Brook

Site of Church of St Mary

Footpath SMA/5A

Footpath SMA/5

57+000

Buckinghamshire
Wycombe District

AP4-010-001:
Additional land required for the
overbridge satellite compound

B4009
Nash Lee Road
Overbridge
Satellite Compound

Roadhead

56+000

AP1-011-007: Minor
amendment to bypass

AP1-010-006: Additional land
required for utility works

Footpath ELL/25

AP4-010-001:
Additional land required for the
overbridge satellite compound

DUNSMORE, WENDOVER & HALTON

Legend		New, diverted or realigned PRow		Chainage (e.g. 10+000)	
	Depot, station, headhouse or portal building		Temporary replacement community facility		Chainage (e.g. 10+000)
	Tunnel portal		Community forum boundary		Stopped-up PRow
	Main construction compound		Existing watercourse		Temporary PRow diversion / realignment
	Satellite construction compound		County boundary		Temporary highway diversion / realignment
	Temporary material stockpile		Borough / District boundary		Main utility works
	Land potentially required during construction		Tunnels external extent		Rail alignment
	Construction traffic route		Construction traffic route		
	Existing public right of way (PRow)		Existing public right of way (PRow)		

Map Number	CT-05-040b
Map Name	Construction Phase SES3 and AP4 ES
Community Forum Area	CFA11 Stoke Mandeville and Aylesbury

hs2

HS2 Ltd accept no responsibility for any circumstances, which arise from the reproduction of this map after alteration, amendment or abbreviation or if it is issued in part or issued incomplete in any way.

Registered in England, Registration number 06791686
Registered offices One Canada Square, London, E14 5AB

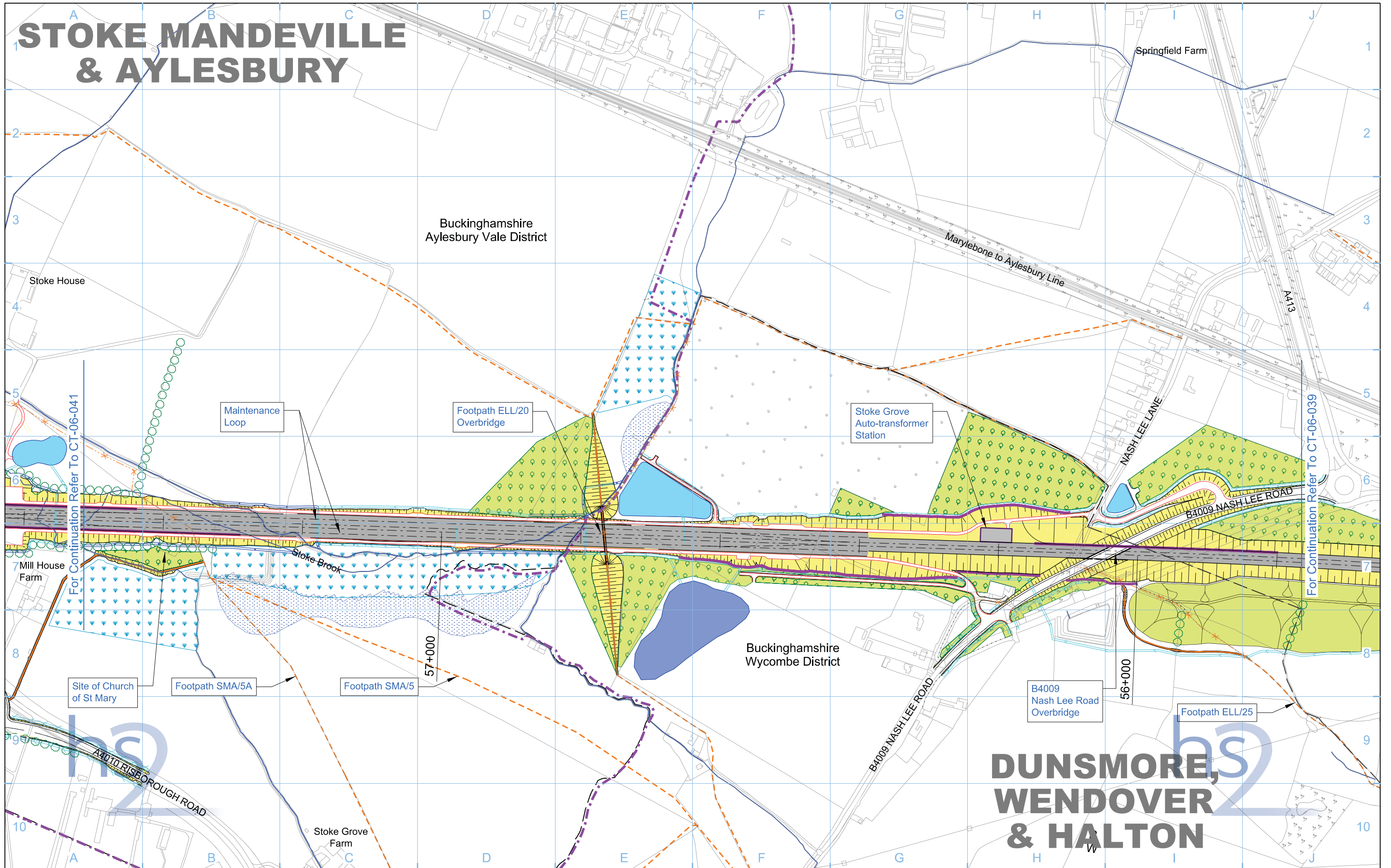
Scale at A3: 1:5,000

0 50 100 150 200 250 Metres

© Crown copyright and database rights 2015, Ordnance Survey Licence Number 100049190.

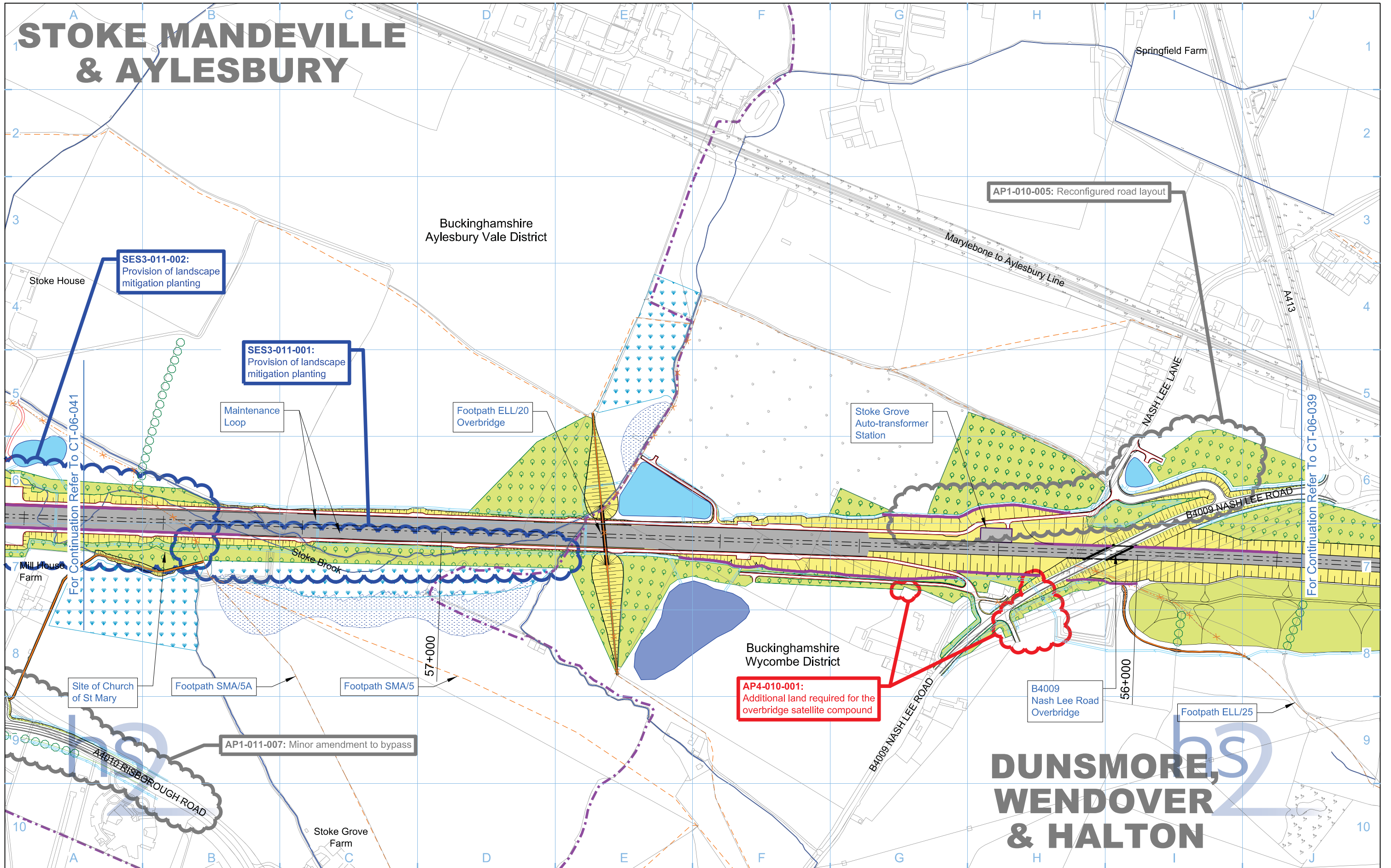
Doc Number: C222-ATK-EV-DPL-020-051101-AP04 P01 Date: 18/08/15

STOKE MANDEVILLE & AYLESBURY



Legend <ul style="list-style-type: none"> Depot, station, headhouse or portal building Tunnel portal Electricity substation Land drainage area Ecological mitigation pond Balancing pond Replacement floodplain storage Woodland habitat creation Wetland habitat creation Grassland habitat creation Landscape mitigation planting (scrub / woodland) Grassed areas Sustainable placement Public realm Engineering earthworks Landscape earthworks Rail alignment formation Returned to suitable development use County boundary Borough / District boundary Community forum boundary Watercourse diversion Existing watercourse Ditches - new Hedgerow habitat creation Main utility works Existing public right of way (PRoW) New, diverted or realigned PRoW Stopped-up PRoW Tunnels external extent Rail alignment HS2 Access road Noise fence barrier Chainage (e.g. 10+000) 		Map Number CT-06-040b Map Name Proposed Scheme Community Forum Area CFA11 Stoke Mandeville and Aylesbury	<p>HS2 Ltd accept no responsibility for any circumstances, which arise from the reproduction of this map after alteration, amendment or abbreviation or if it is issued in part or issued incomplete in any way.</p> <p>Registered in England, Registration number 06791686 Registered office: Eland House, Bressenden Place, London SW1E 5DU</p> <p>Scale at A3: 1:5,000</p> <p>© Crown copyright and database rights 2013, Ordnance Survey Licence Number 100049190.</p> <p>Doc Number: C222-ATK-EV-DPL-020-061101 P03 Date: 22/10/13</p>
--	--	--	--

STOKE MANDEVILLE & AYLESBURY



Legend	
	Depot, station, headhouse or portal building
	Tunnel portal
	Electricity substation
	Land drainage area
	Ecological mitigation pond
	Balancing pond
	Replacement floodplain storage
	Woodland habitat creation
	Wetland habitat creation
	Grassland habitat creation
	Landscape mitigation planting (scrub / woodland)
	Grassed areas
	Sustainable placement
	Public realm/Replacement community facility
	Engineering earthworks
	Landscape earthworks
	Rail alignment formation
	Returned to suitable development use
	County boundary
	Borough / District boundary
	Community forum boundary
	Watercourse diversion
	Existing watercourse
	Ditches - new
	Hedgerow habitat creation
	Main utility works
	Existing public right of way (PRoW)
	New, diverted or realigned PRoW
	Stopped-up PRoW
	Tunnels external extent
	Rail alignment
	HS2 Access road
	Noise fence barrier
	Chainage (e.g. 10+000)

Map Number: **CT-06-040b**

Map Name: **Proposed Scheme SES3 and AP4 ES**

Community Forum Area: **CFA11 Stoke Mandeville and Aylesbury**

hs2

HS2 Ltd accept no responsibility for any circumstances, which arise from the reproduction of this map after alteration, amendment or abbreviation or if it is issued in part or issued incomplete in any way.

Registered in England, Registration number 06791686
Registered offices One Canada Square, London, E14 5AB

Scale at A3: 1:5,000

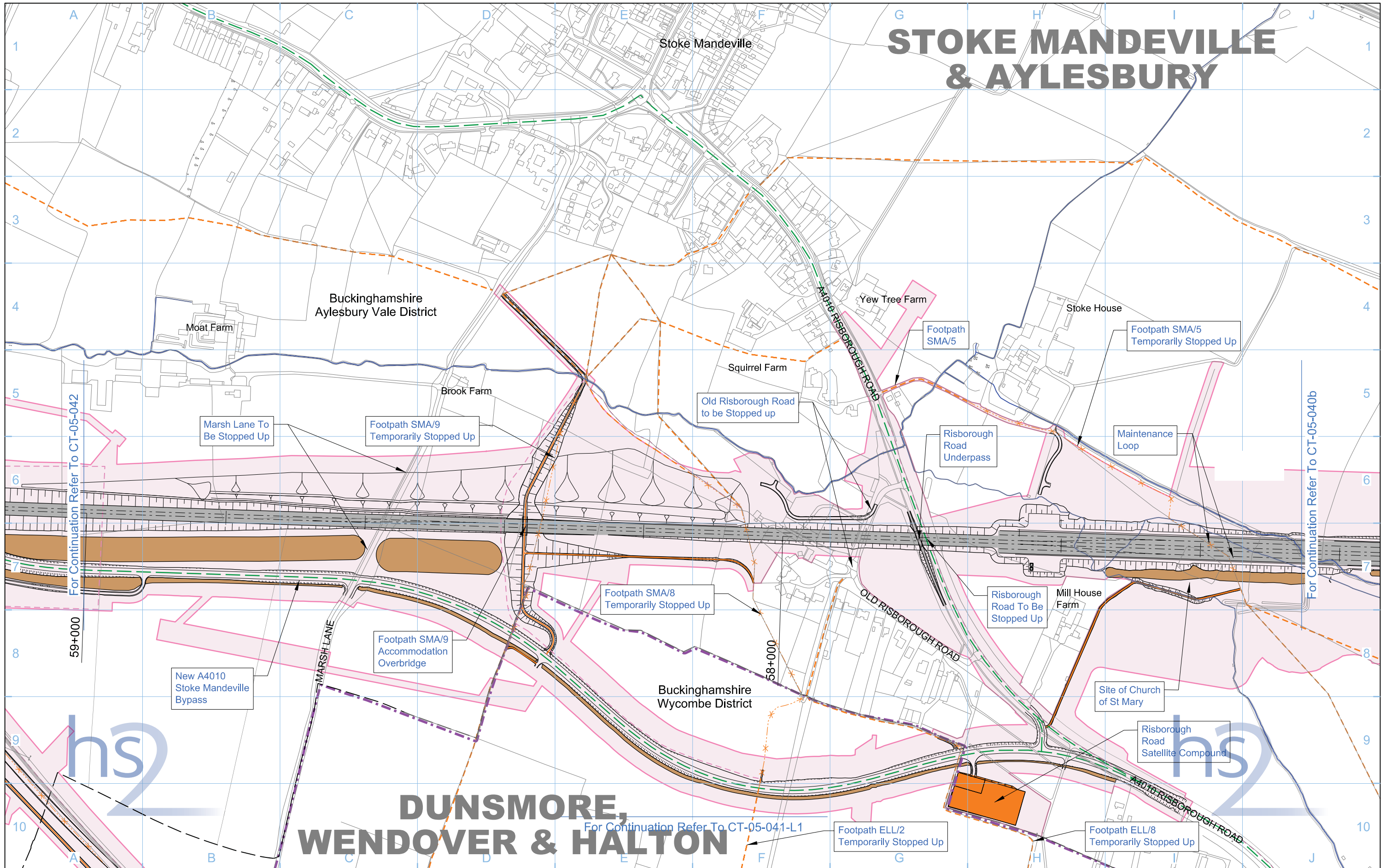
0 50 100 150 200 250 Metres

© Crown copyright and database rights 2015, Ordnance Survey Licence Number 100049190.

Doc Number: C222-ATK-EV-DPL-020-061101-AP04 P02 Date: 18/09/15

STOKE MANDEVILLE & AYLESBURY

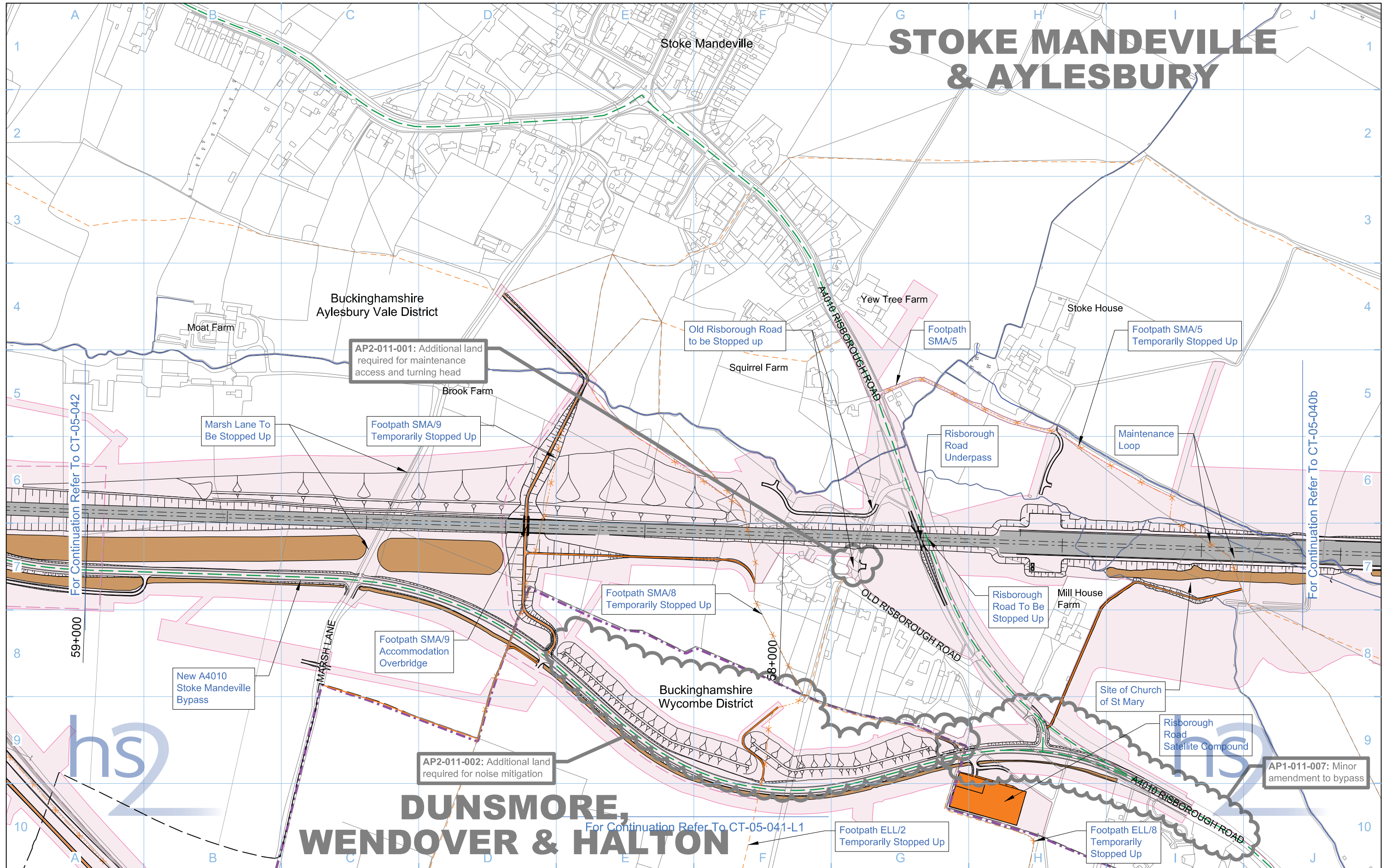
DUNSMORE, WENDOVER & HALTON



Legend <ul style="list-style-type: none"> Depot, station, headhouse or portal building Tunnel portal Main construction compound Satellite construction compound Temporary material stockpile Rail alignment formation Landscape earthworks Engineering earthworks County boundary Borough / District boundary Land potentially required during construction Community forum boundary Existing watercourse Tunnels external extent Construction traffic route Existing public right of way (PRoW) New, diverted or realigned PRoW Stopped-up PRoW Temporary PRoW diversion / realignment Temporary highway diversion / realignment UT - Main utility works Chainage (e.g. 10+000) Rail alignment 		Map Number CT-05-041 Map Name Construction Phase Community Forum Area CFA11 Stoke Mandeville and Aylesbury	<p>HS2 Ltd accept no responsibility for any circumstances, which arise from the reproduction of this map after alteration, amendment or abbreviation or if it is Issued in part or Issued incomplete in any way.</p> <p>Registered in England, Registration number 06791686 Registered office: Eland House, Bressenden Place, London SW1E 5DU</p> <p>Scale at A3: 1:5,000</p> <p>© Crown copyright and database rights 2013. Ordnance Survey Licence Number 100049190.</p> <p>Doc Number: C222-ATK-EV-DPL-020-051102 P03 Date: 22/10/13</p>
--	--	---	---

STOKE MANDEVILLE & AYLESBURY

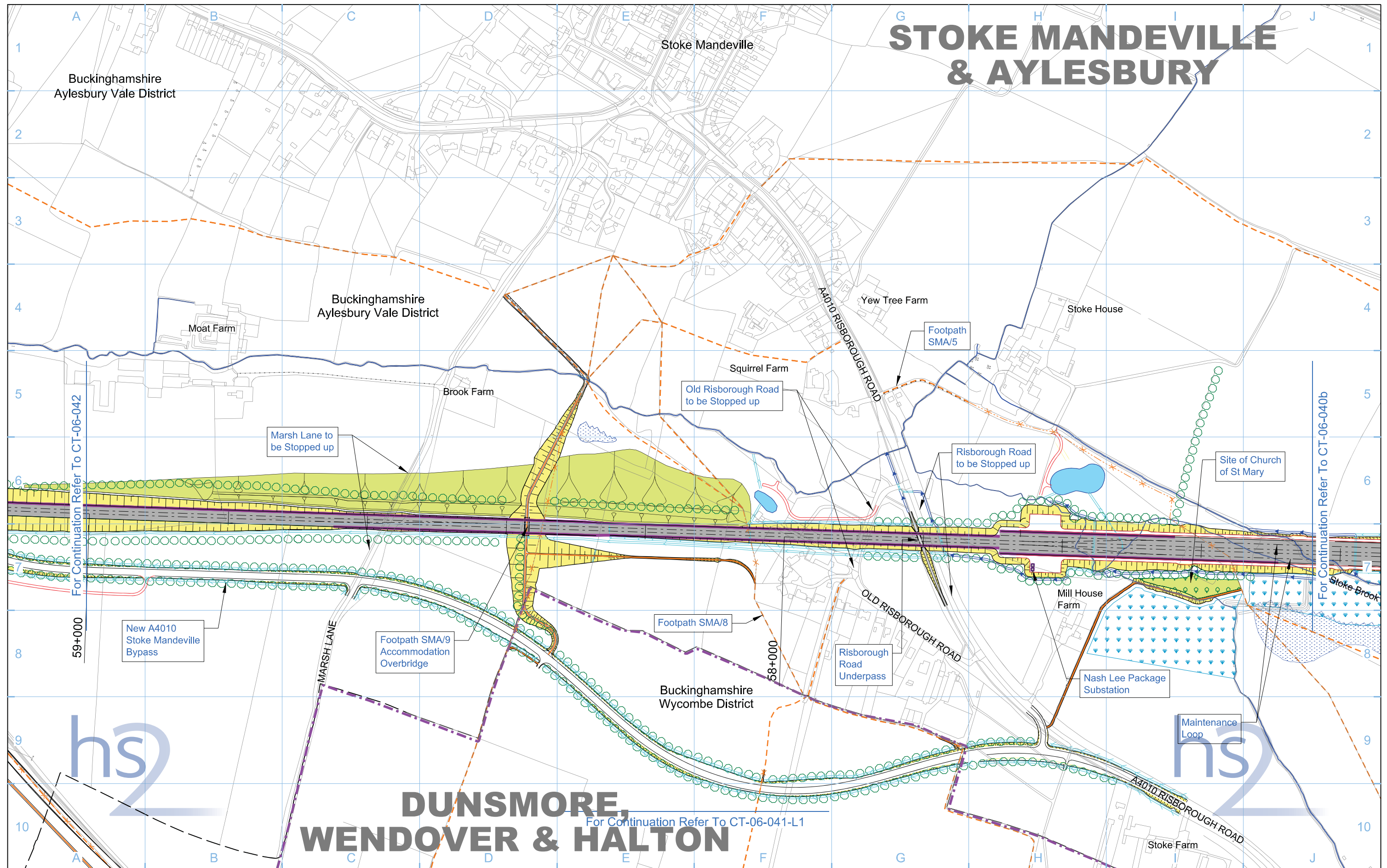
DUNSMORE, WENDOVER & HALTON



Legend <ul style="list-style-type: none"> Depot, station, headhouse or portal building Tunnel portal Main construction compound Satellite construction compound Temporary material stockpile Rail alignment formation Landscape earthworks Engineering earthworks County boundary Borough / District boundary Land potentially required during construction Temporary replacement community facility Community forum boundary Existing watercourse Tunnels external extent Construction traffic route Existing public right of way (PRoW) New, diverted or realigned PRoW Stopped-up PRoW Temporary PRoW diversion / realignment Temporary highway diversion / realignment Main utility works Chainage (e.g. 10+000) Rail alignment 		Map Information Map Number: CT-05-041 Map Name: Construction Phase SES3 and AP4 ES Community Forum Area: CFA11 Stoke Mandeville and Aylesbury		hs2 HS2 Ltd accept no responsibility for any circumstances, which arise from the reproduction of this map after alteration, amendment or abbreviation or if it is issued in part or issued incomplete in any way. Registered in England, Registration number 06791686 Registered offices One Canada Square, London, E14 5AB Scale at A3: 1:5,000 © Crown copyright and database rights 2015, Ordnance Survey Licence Number 100049190. Doc Number: C222-ATK-EV-DPL-020-051102-AP04 P02 Date: 18/09/15	
---	--	--	--	---	--

STOKE MANDEVILLE & AYLESBURY

DUNSMORE, WENDOVER & HALTON



Legend	
	Depot, station, headhouse or portal building
	Tunnel portal
	Electricity substation
	Land drainage area
	Ecological mitigation pond
	Balancing pond
	Replacement floodplain storage
	Woodland habitat creation
	Wetland habitat creation
	Grassland habitat creation
	Landscape mitigation planting (scrub / woodland)
	Grassed areas
	Sustainable placement
	Public realm
	Engineering earthworks
	Landscape earthworks
	Rail alignment formation
	Returned to suitable development use
	County boundary
	Borough / District boundary
	Community forum boundary
	Watercourse diversion
	Existing watercourse
	Ditches - new
	Hedgerow habitat creation
	Main utility works
	Existing public right of way (PRoW)
	New, diverted or realigned PRoW
	Stopped-up PRoW
	Tunnels external extent
	Rail alignment
	HS2 Access road
	Noise fence barrier
	Chainage (e.g. 10+000)

Map Number: **CT-06-041**

Map Name: **Proposed Scheme**

Community Forum Area: **CFA11**
Stoke Mandeville and Aylesbury

hs2

HS2 Ltd accept no responsibility for any circumstances, which arise from the reproduction of this map after alteration, amendment or abbreviation or if it is issued in part or issued incomplete in any way.

Registered in England, Registration number 06791686
Registered office: Eland House, Bressenden Place, London SW1E 5DU

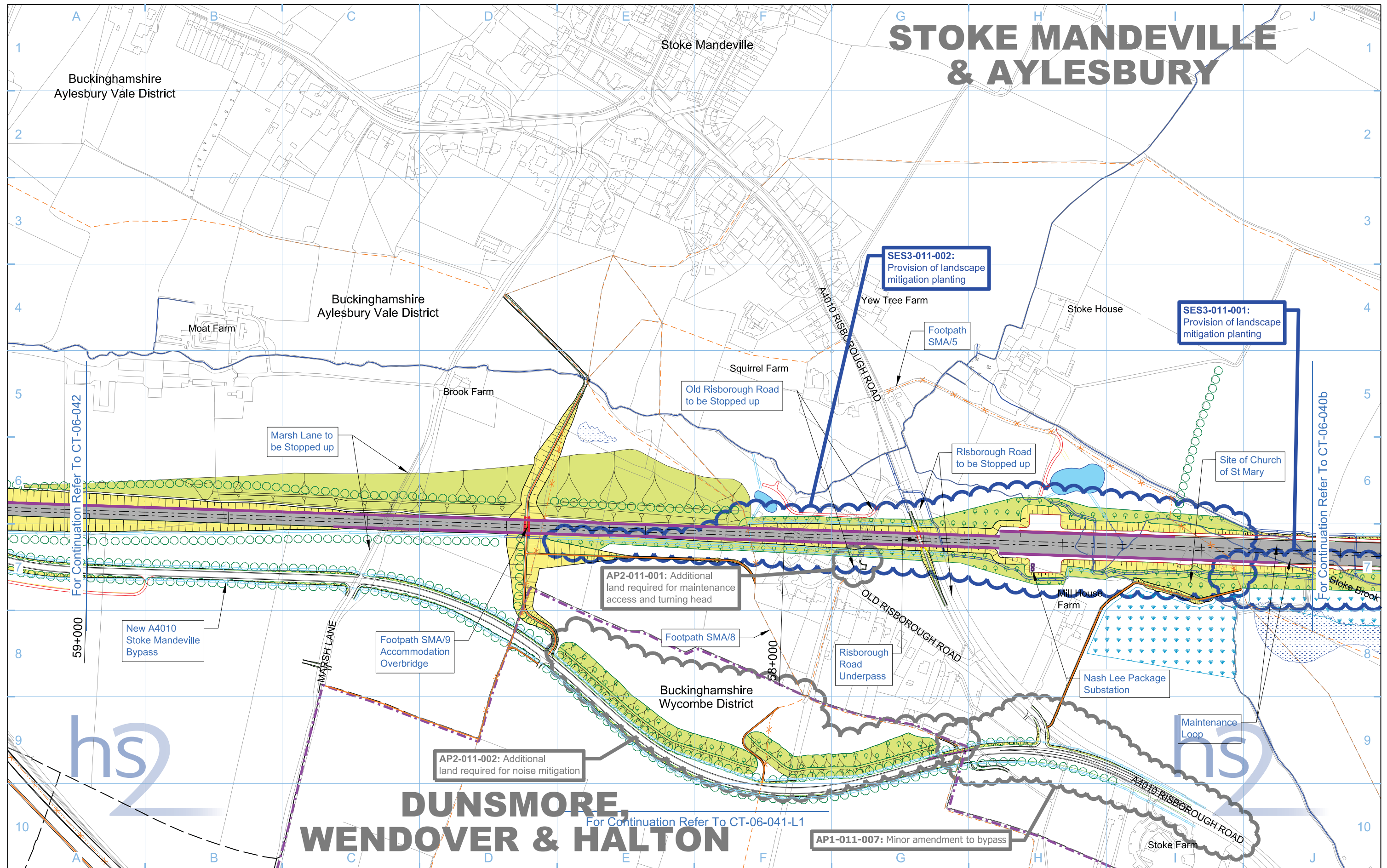
Scale at A3: 1:5,000

© Crown copyright and database rights 2013, Ordnance Survey Licence Number 100049190.

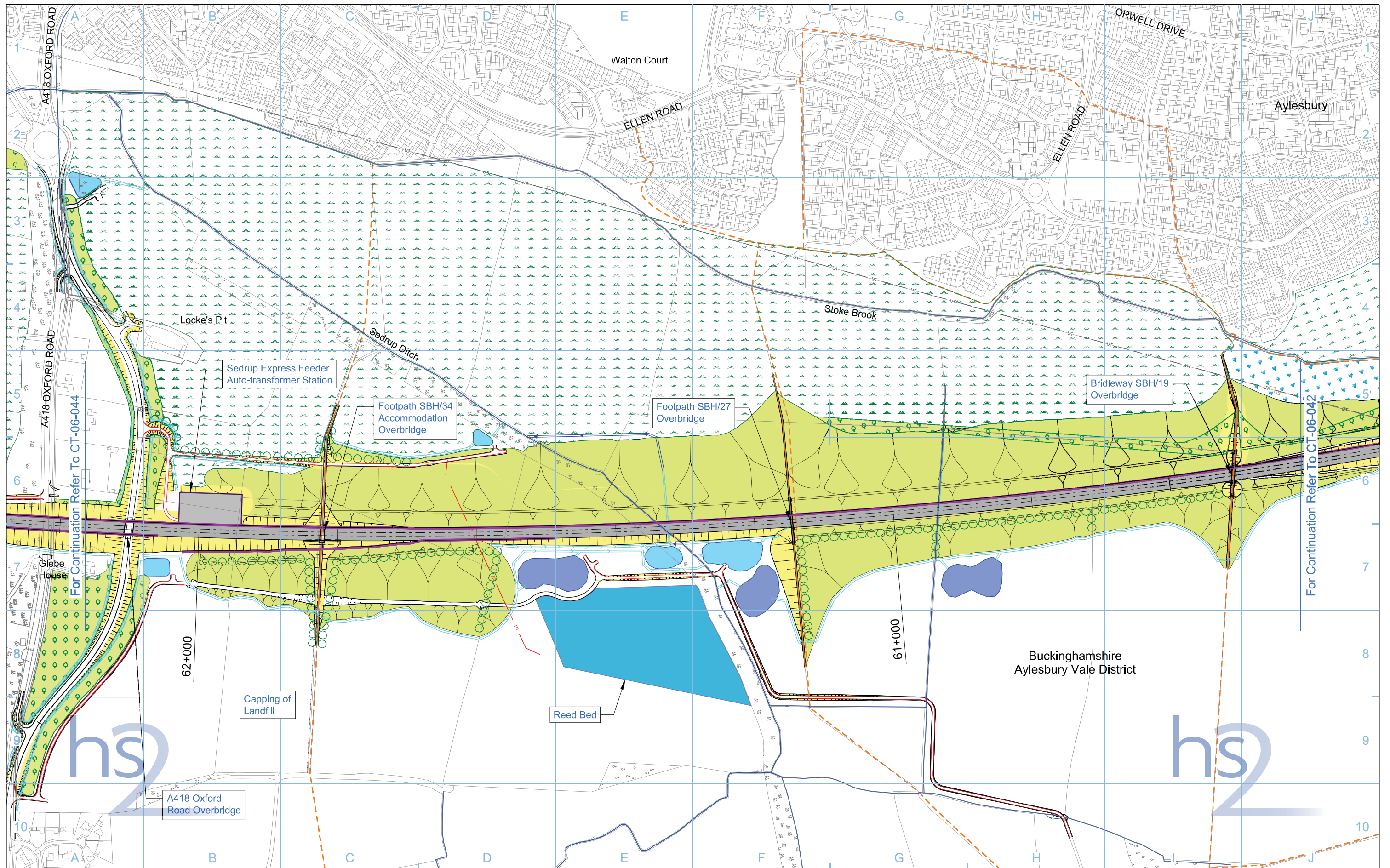
Doc Number: C222-ATK-EV-DPL-020-061102 P04 Date: 30/10/13

STOKE MANDEVILLE & AYLESBURY

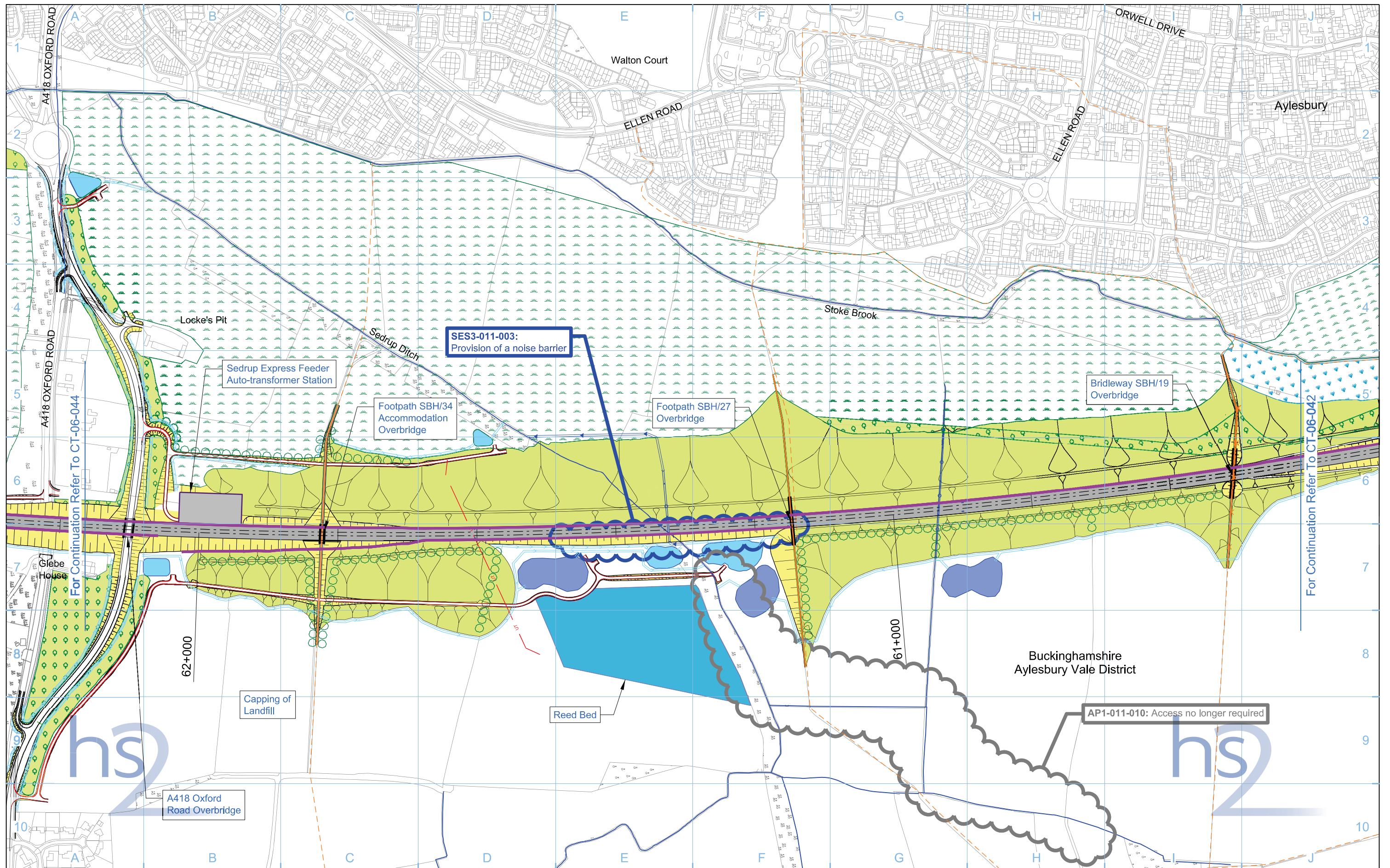
DUNSMORE, WENDOVER & HALTON



Legend <ul style="list-style-type: none"> Depot, station, headhouse or portal building Tunnel portal Electricity substation Land drainage area Ecological mitigation pond Balancing pond Replacement floodplain storage Woodland habitat creation Wetland habitat creation Grassland habitat creation Landscape mitigation planting (scrub / woodland) Grassed areas Sustainable placement Public realm/Replacement community facility Engineering earthworks Landscape earthworks Rail alignment formation Returned to suitable development use County boundary Borough / District boundary Community forum boundary Watercourse diversion Existing watercourse Ditches - new Hedgerow habitat creation Main utility works Existing public right of way (PRoW) New, diverted or realigned PRoW Stopped-up PRoW Tunnels external extent Rail alignment HS2 Access road Noise fence barrier Chainage (e.g. 10+000) 		Map Number CT-06-041 Map Name Proposed Scheme SES3 and AP4 ES Community Forum Area CFA11 Stoke Mandeville and Aylesbury	 HS2 Ltd accept no responsibility for any circumstances, which arise from the reproduction of this map after alteration, amendment or abbreviation or if it is issued in part or issued incomplete in any way. Registered office: One Canada Square, London, E14 5AB Scale at A3: 1:5,000 0 50 100 150 200 250 Metres © Crown copyright and database rights 2015, Ordnance Survey Licence Number 100049190. Doc Number: C222-ATK-EV-DPL-020-061102-AP04 P01 Date: 17/08/15
---	--	---	--



Legend <ul style="list-style-type: none"> Depot, station, headhouse or portal building Tunnel portal Electricity substation Land drainage area Ecological mitigation pond Balancing pond 		<ul style="list-style-type: none"> Replacement floodplain storage Woodland habitat creation Wetland habitat creation Grassland habitat creation Landscape mitigation planting (scrub / woodland) Grassed areas Sustainable placement 		<ul style="list-style-type: none"> Public realm Engineering earthworks Landscape earthworks Rail alignment formation Returned to suitable development use County boundary Borough / District boundary 		<ul style="list-style-type: none"> Community forum boundary Watercourse diversion Existing watercourse Ditches - new Hedgerow habitat creation Main utility works Existing public right of way (PRoW) New, diverted or realigned PRoW 		<ul style="list-style-type: none"> Stopped-up PRoW Tunnels external extent Rail alignment HS2 Access road Noise fence barrier Chainage (e.g. 10+000) 		Map Number CT-06-043 Map Name Proposed Scheme Community Forum Area CFA11 Stoke Mandeville and Aylesbury		<p>HS2 Ltd accept no responsibility for any circumstances, which arise from the reproduction of this map after alteration, amendment or abbreviation or if it is issued in part or issued incomplete in any way.</p> <p>Registered in England, Registration number 06791686 Registered office: Eland House, Bressenden Place, London SW1E 5DU</p> <p>Scale at A3: 1:5,000</p> <p>© Crown copyright and database rights 2013. Ordnance Survey Licence Number 100049190.</p> <p>Doc Number: C222-ATK-EV-DPL-020-061105 P04 Date: 30/10/13</p>	
--	--	---	--	--	--	---	--	--	--	--	--	--	--



Legend	
	Depot, station, headhouse or portal building
	Tunnel portal
	Electricity substation
	Land drainage area
	Ecological mitigation pond
	Balancing pond
	Replacement floodplain storage
	Woodland habitat creation
	Wetland habitat creation
	Grassland habitat creation
	Landscape mitigation planting (scrub / woodland)
	Grassed areas
	Sustainable placement
	Public realm/Replacement community facility
	Engineering earthworks
	Landscape earthworks
	Rail alignment formation
	Returned to suitable development use
	County boundary
	Borough / District boundary
	Community forum boundary
	Watercourse diversion
	Existing watercourse
	Ditches - new
	Hedgerow habitat creation
	Main utility works
	Existing public right of way (PRoW)
	New, diverted or realigned PRoW
	Stopped-up PRoW
	Tunnels external extent
	Rail alignment
	HS2 Access road
	Noise fence barrier
	Chainage (e.g. 10+000)

Map Number	CT-06-043
Map Name	Proposed Scheme SES3 and AP4 ES
Community Forum Area	CFA11 Stoke Mandeville and Aylesbury

hs2

HS2 Ltd accept no responsibility for any circumstances, which arise from the reproduction of this map after alteration, amendment or abbreviation or if it is issued in part or issued incomplete in any way.

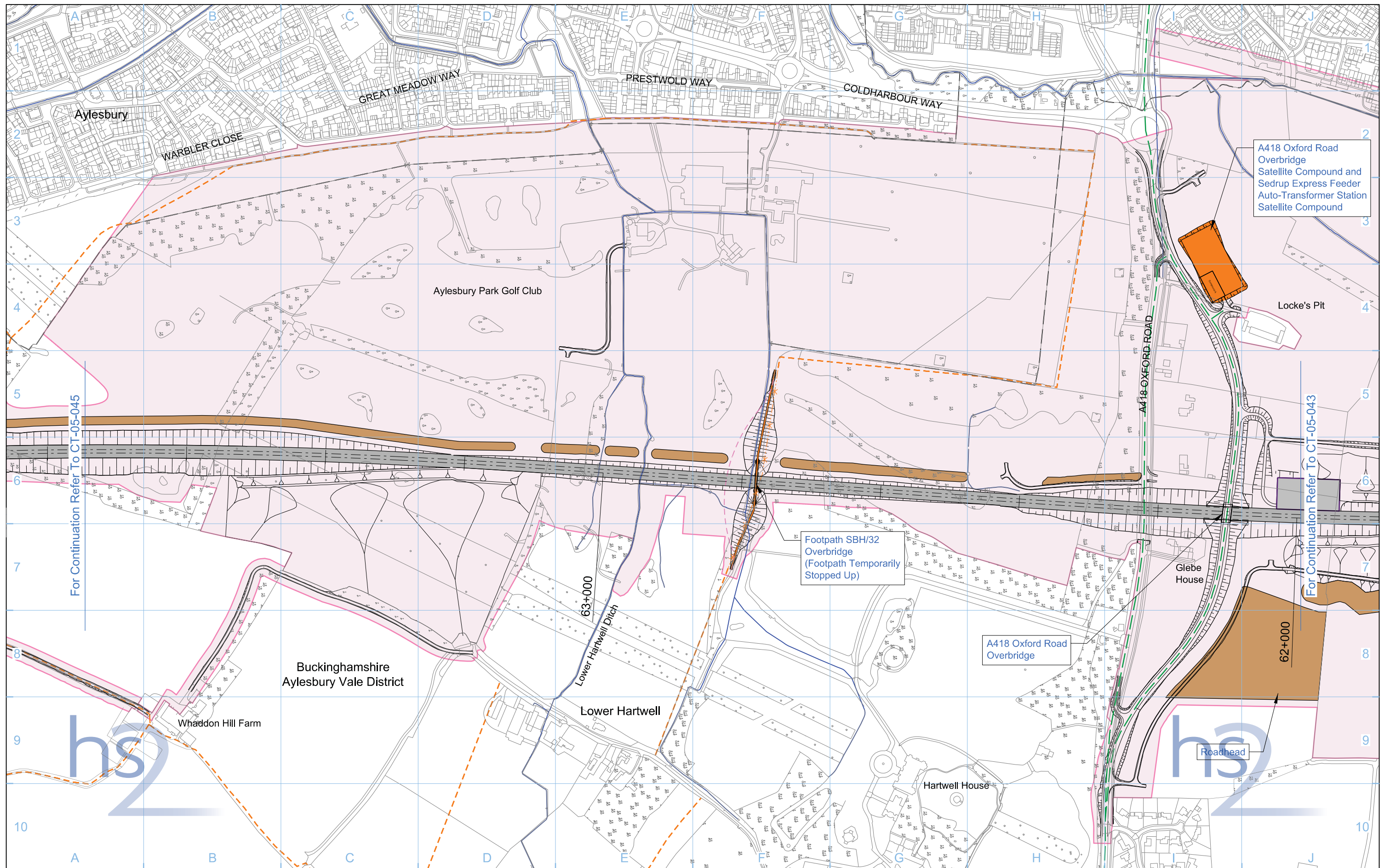
Registered in England, Registration number 06791686
Registered office One Canada Square, London, E14 5AB

Scale at A3: 1:5,000

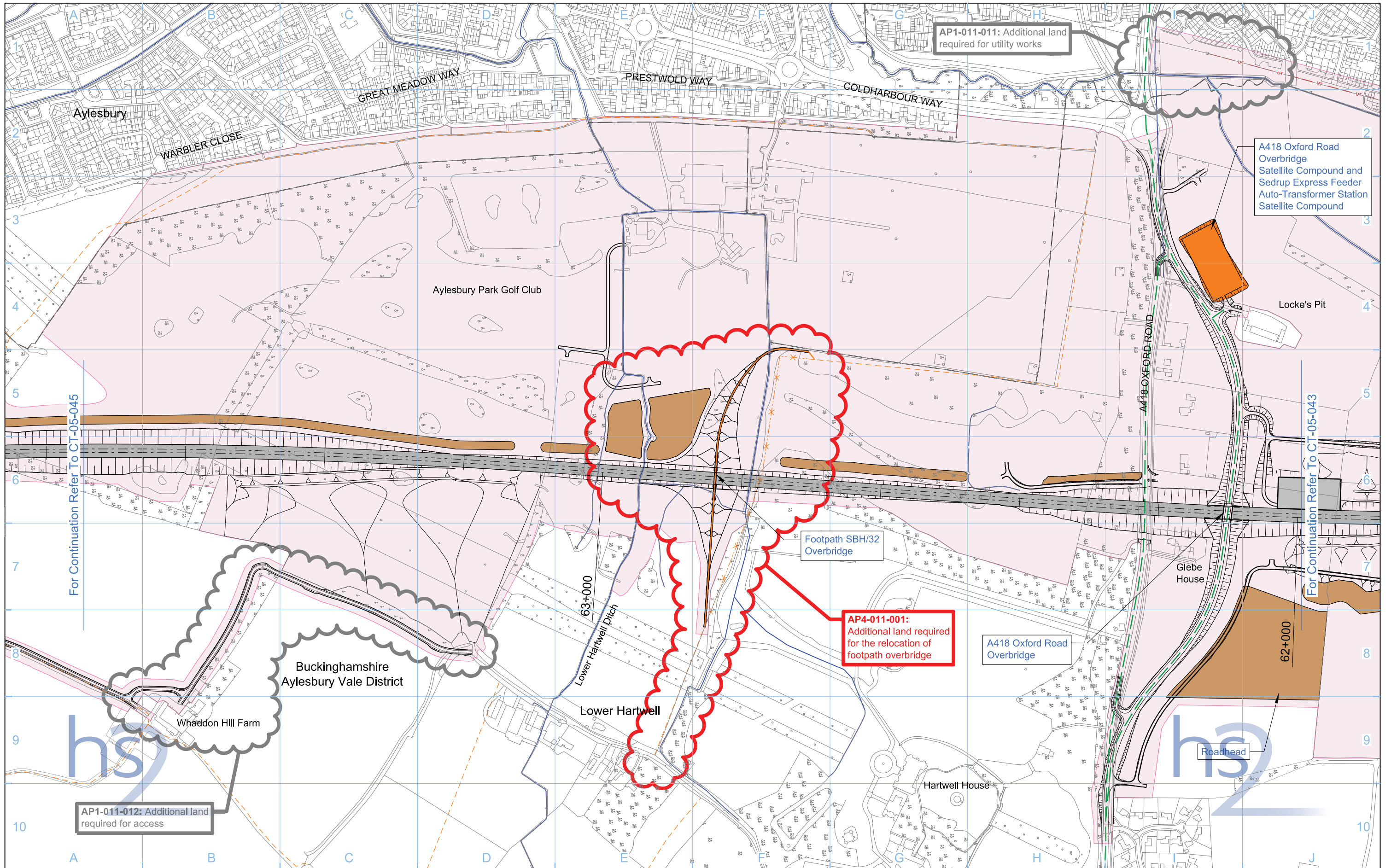
0 50 100 150 200 250 Metres

© Crown copyright and database rights 2015, Ordnance Survey Licence Number 100049190.

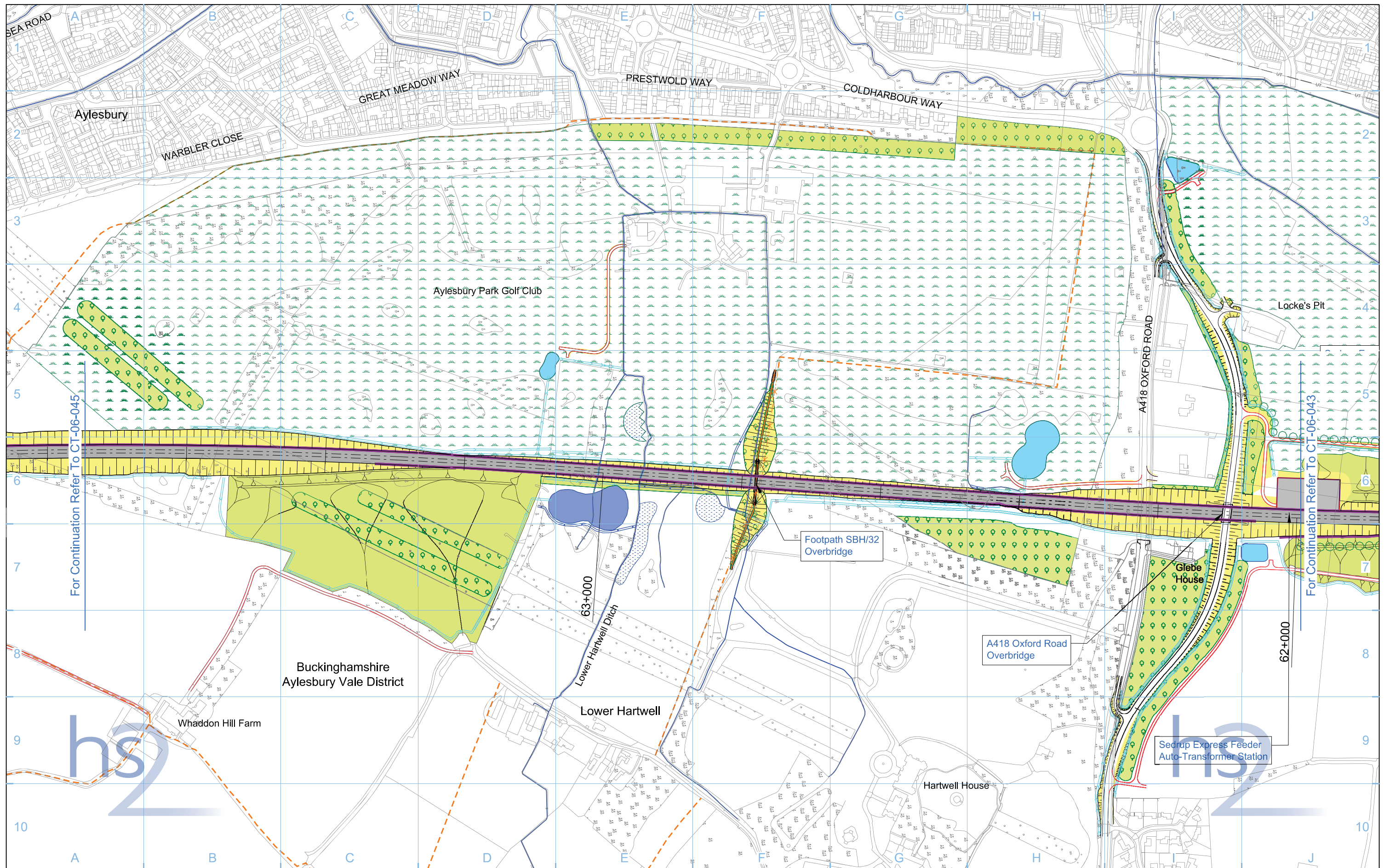
Doc Number: C222-ATK-EV-DPL-020-061105-AP04 P01 **Date:** 17/08/15



Legend 		Map Number CT-05-044 Map Name Construction Phase Community Forum Area CFA11 Stoke Mandeville and Aylesbury		 HS2 Ltd accept no responsibility for any circumstances, which arise from the reproduction of this map after alteration, amendment or abbreviation or if it is issued in part or issued incomplete in any way. Registered in England, Registration number 06791686 Registered office: Eland House, Bressenden Place, London SW1E 5DU Scale at A3: 1:5,000 © Crown copyright and database rights 2013. Ordnance Survey Licence Number 100049190. Doc Number: C222-ATK-EV-DPL-020-051106 P03 Date: 22/10/13	
-------------------	--	---	--	---	--



Legend <ul style="list-style-type: none"> Depot, station, headhouse or portal building Tunnel portal Main construction compound Satellite construction compound Temporary material stockpile Landscape earthworks Engineering earthworks County boundary Borough / District boundary Land potentially required during construction Temporary replacement community facility Community forum boundary Existing watercourse Tunnels external extent Construction traffic route Existing public right of way (PRoW) New, diverted or realigned PRoW Stopped-up PRoW Temporary PRoW diversion / realignment Temporary highway diversion / realignment - UT - Main utility works 		<ul style="list-style-type: none"> Chainage (e.g. 10+000) Rail alignment 	<p>Map Number CT-05-044</p> <p>Map Name Construction Phase SES3 and AP4 ES</p> <p>Community Forum Area CFA11 Stoke Mandeville and Aylesbury</p>	<p>hs2</p> <p>HS2 Ltd accept no responsibility for any circumstances, which arise from the reproduction of this map after alteration, amendment or abbreviation or if it is issued in part or issued incomplete in any way.</p> <p>Registered in England, Registration number 06791686 Registered office One Canada Square, London, E14 5AB</p> <p>Scale at A3: 1:5,000</p> <p>© Crown copyright and database rights 2015, Ordnance Survey Licence Number 100049190.</p> <p>Doc Number: C222-ATK-EV-DPL-020-051106-AP04 P01 Date: 18/08/15</p>
--	--	--	---	---



- Legend**
- Depot, station, headhouse or portal building
 - Tunnel portal
 - Electricity substation
 - Land drainage area
 - Ecological mitigation pond
 - Balancing pond

- Replacement floodplain storage
- Woodland habitat creation
- Wetland habitat creation
- Grassland habitat creation
- Landscape mitigation planting (scrub / woodland)
- Grassed areas
- Sustainable placement

- Public realm
- Engineering earthworks
- Landscape earthworks
- Rail alignment formation
- Returned to suitable development use
- County boundary
- Borough / District boundary

- Community forum boundary
- Watercourse diversion
- Existing watercourse
- Ditches - new
- Hedgerow habitat creation
- Main utility works
- Existing public right of way (PRoW)
- New, diverted or realigned PRoW

- Stopped-up PRoW
- Tunnels external extent
- Rail alignment
- HS2 Access road
- Noise fence barrier
- Chainage (e.g. 10+000)

Map Number: **CT-06-044**

Map Name: **Proposed Scheme**

Community Forum Area: **CFA11**
Stoke Mandeville and Aylesbury

hs2

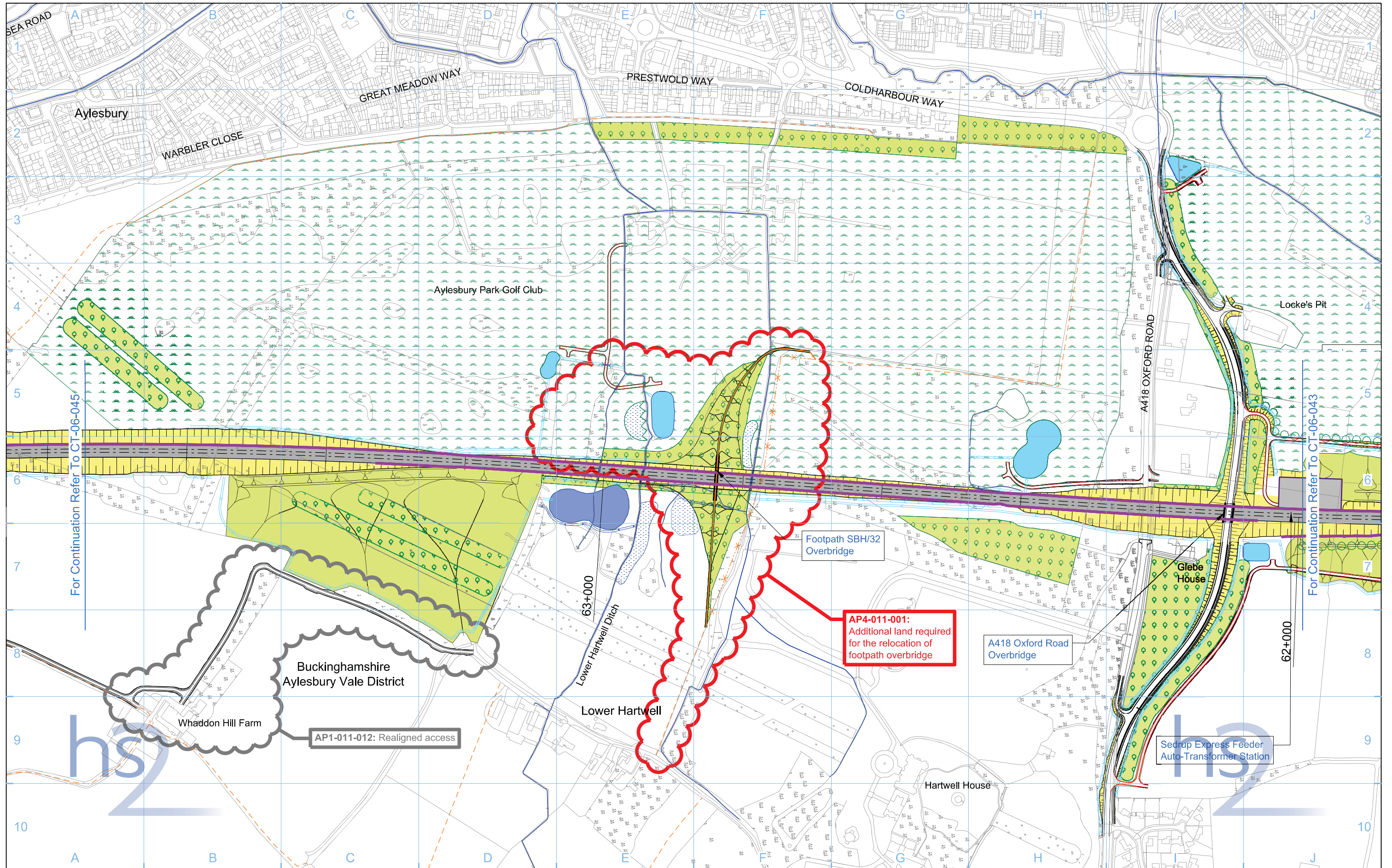
HS2 Ltd accept no responsibility for any circumstances, which arise from the reproduction of this map after alteration, amendment or abbreviation or if it is issued in part or issued incomplete in any way.

Registered in England, Registration number 06791686
Registered office: Eland House, Bressenden Place, London SW1E 5DU

Scale at A3: 1:5,000

© Crown copyright and database rights 2013, Ordnance Survey Licence Number 100049190.

Doc Number: C222-ATK-EV-DPL-020-061106 P03 Date: 22/10/13



For Continuation Refer To CT-06-045

For Continuation Refer To CT-06-043

Legend <ul style="list-style-type: none"> Depot, station, headhouse or portal building Tunnel portal Electricity substation Land drainage area Ecological mitigation pond Balancing pond Replacement floodplain storage Woodland habitat creation Wetland habitat creation Grassland habitat creation Landscape mitigation planting (scrub / woodland) Grassed areas Sustainable placement Public realm/Replacement community facility Engineering earthworks Landscape earthworks Rail alignment formation Returned to suitable development use County boundary Borough / District boundary Community forum boundary Watercourse diversion Existing watercourse Ditches - new Hedgerow habitat creation Main utility works Existing public right of way (PRoW) New, diverted or realigned PRoW Stopped-up PRoW Tunnels external extent Rail alignment HS2 Access road Noise fence barrier Chainage (e.g. 10+000) 		<p>Map Number CT-06-044</p> <p>Map Name Proposed Scheme SES3 and AP4 ES</p> <p>Community Forum Area CFA11 Stoke Mandeville and Aylesbury</p>	<p>hs2 Registered in England, Registration number 06791686 Registered office: One Canada Square, London, E14 5AB</p> <p>Scale at A3: 1:5,000</p> <p>0 50 100 150 200 250 Metres</p> <p>© Crown copyright and database rights 2015, Ordnance Survey Licence Number 100049190.</p> <p>Doc Number: C222-ATK-EV-DPL-020-061106-AP04 P01 Date: 17/08/15</p>
--	--	--	---

This page is left intentionally blank

HIGH SPEED RAIL (LONDON - WEST MIDLANDS)

Supplementary Environmental Statement 3 and
Additional Provision 4 Environmental Statement

Volume 2 | LV-01 - Photomontages

October 2015

Current baseline (2013)



Operation Year 1 (2026) - Winter verifiable photomontage



Technical Information

Location: Viewpoint 112-2-002: View south-west from Stoke House, Stoke Mandeville.

Date taken: 28/03/13
Time taken: 15:35
Focal length: 57.296mm

Viewpoint location shown on Map LV-04-038a.
For key plan legend refer to map series LV-04.

This verifiable photomontage provides an illustration of how the Proposed Scheme may look in 2026 (the opening year). The design of the Proposed Scheme may be subject to design development in response to consultation. Design development will not result in any significant adverse change in the environmental effects detailed in the photomontages of the Proposed Scheme. Where new planting is proposed, it has been shown as immature plants which would mature over time to further integrate the Proposed Scheme into the landscape.

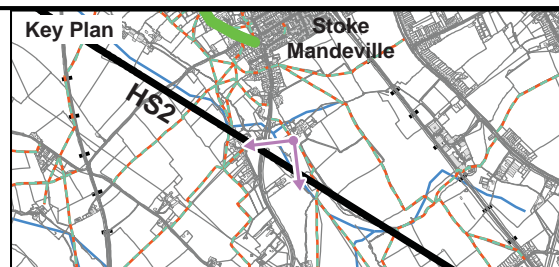


Figure Number	LV-01-060
Figure Name	Verifiable Photomontage Operation Year 1 (2026) - Winter Viewpoint 112-2-002
	Community Forum Area CFA11: Stoke Mandeville and Aylesbury

hs2

Registered in England. Registration number 06791686.
Registered office: Eland House, Bressenden Place,
London SW1E 5DU.

© Crown copyright and database rights 2012
Ordnance Survey Licence Number 100049190

Doc Number: C250-ARP-EV-PHO-000-001059-P01

HS2 Ltd accept no responsibility for any circumstances, which arise from the reproduction of this map after alteration, amendment or abbreviation or if it is issued in part or issued incomplete in anyway.

Date: 17/10/13

Current baseline (2013)



Operation Year 1 (2026) - Winter verifiable photomontage



Technical Information

Location: Viewpoint 112-2-002: View south-west from Stoke House, Stoke Mandeville.

Date taken: 28/03/13, Time taken: 15:35, Focal length: 57.296mm
 SES Reference: SES3-011-001 and SES3-011-002
 Status: Updated

Viewpoint location shown on Map LV-04-038b.
 For key plan legend refer to map series LV-04.

This verifiable photomontage provides an illustration of how the Revised Scheme may look in 2026 (the opening year). The design of the Revised Scheme may be subject to design development in response to consultation. Design development will not result in any significant adverse change in the environmental effects detailed in the photomontages of the Revised Scheme. Where new planting is proposed, it has been shown as immature plants which would mature over time to further integrate the Revised Scheme into the landscape.

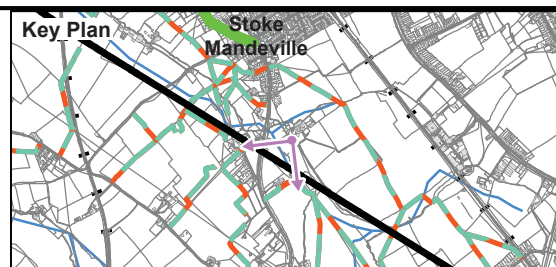


Figure Number	LV-01-060
Figure Name	Verifiable Photomontage Operation Year 1 (2026) - Winter Viewpoint 112-2-002 SES3 and AP4 ES
	Community Forum Area CFA11: Stoke Mandeville and Aylesbury



HS2 Ltd accept no responsibility for any circumstances, which arise from the reproduction of this map after alteration, amendment or abbreviation or if it is issued in part or issued incomplete in anyway.

Registered in England. Registration number 06791686.
 Registered office: One Canada Square, London, E14 5AB.

© Crown copyright and database rights 2015
 Ordnance Survey Licence Number 100049190

Doc Number: C250-ARP-EV-PHO-000-001059-AP04-P01

Date: 16/09/15

Current baseline (2013)



Operation Year 1 (2026) - Winter verifiable photomontage



Technical Information

Location: Viewpoint 121-3-003: View north along the main tree avenue, Hartwell House.

Date taken: 17/04/13
Time taken: 13:04
Focal length: 57.296mm

Viewpoint location shown on Map LV-04-040.
For key plan legend refer to map series LV-04.

This verifiable photomontage provides an illustration of how the Proposed Scheme may look in 2026 (the opening year). The design of the Proposed Scheme may be subject to design development in response to consultation. Design development will not result in any significant adverse change in the environmental effects detailed in the photomontages of the Proposed Scheme. Where new planting is proposed, it has been shown as immature plants which would mature over time to further integrate the Proposed Scheme into the landscape.

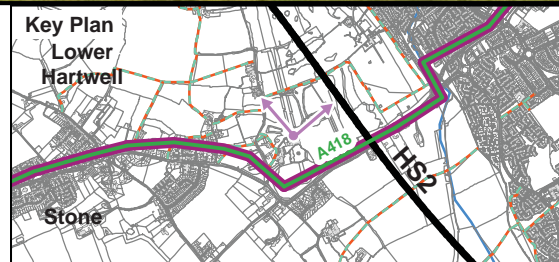



Figure Number	LV-01-067
Figure Name	Verifiable Photomontage Operation Year 1 (2026) - Winter Viewpoint 121-3-003
Community Forum Area CFA11: Stoke Mandeville and Aylesbury	



Registered in England. Registration number 06791686.
Registered office: Eland House, Bressenden Place,
London SW1E 5DU.
© Crown copyright and database rights 2012
Ordnance Survey Licence Number 100049190
Doc Number: C250-ARP-EV-PHO-000-001066-P01

HS2 Ltd accept no responsibility for any circumstances, which arise from the reproduction of this map after alteration, amendment or abbreviation or if it is issued in part or issued incomplete in anyway.

Date: 17/10/13

Current baseline (2013)



Operation Year 1 (2026) - Winter verifiable photomontage



Technical Information

Location: Viewpoint 121-3-003: View north along the main tree avenue, Hartwell House.

Date taken: 17/04/13, Time taken: 13:04, Focal length: 57.296mm
 AP Reference: AP4-011-001
 Status: Updated

Viewpoint location shown on Map LV-04-040.
 For key plan legend refer to map series LV-04.

This verifiable photomontage provides an illustration of how the Revised Scheme may look in 2026 (the opening year). The design of the Revised Scheme may be subject to design development in response to consultation. Design development will not result in any significant adverse change in the environmental effects detailed in the photomontages of the Revised Scheme. Where new planting is proposed, it has been shown as immature plants which would mature over time to further integrate the Revised Scheme into the landscape.

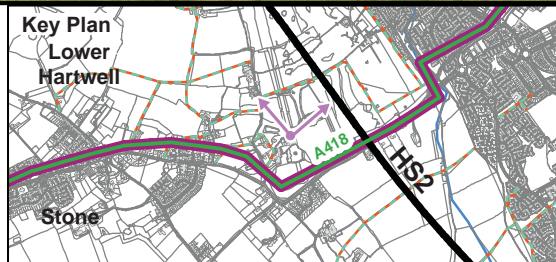



Figure Number	LV-01-067
Figure Name	Verifiable Photomontage Operation Year 1 (2026) - Winter Viewpoint 121-3-003 SES3 and AP4 ES
Community Forum Area CFA11: Stoke Mandeville and Aylesbury	



Registered in England. Registration number 06791686.
 Registered office: One Canada Square, London, E14 5AB.
 © Crown copyright and database rights 2015
 Ordnance Survey Licence Number 100049190
 Doc Number: C250-ARP-EV-PHO-000-001066-AP04-P01

HS2 Ltd accept no responsibility for any circumstances, which arise from the reproduction of this map after alteration, amendment or abbreviation or if it is issued in part or issued incomplete in anyway.

Date: 23/09/15

No corresponding map in the main ES

Current baseline (2015)



Operation Year 1 (2026) - Summer verifiable photomontage



Technical Information

Location: Viewpoint 122-3-001: View south-west from PRow (Footpath SBH/32) within Aylesbury Park Golf Course, Aylesbury.

Date taken: 10/09/15, Time taken: 09:27, Focal length: 57.296mm
 AP Reference: AP4-011-001
 Status: New

Viewpoint location shown on Map LV-04-041.
 For key plan legend refer to map series LV-04.

This verifiable photomontage provides an illustration of how the Revised Scheme may look in 2026 (the opening year). The design of the Revised Scheme may be subject to design development in response to consultation. Design development will not result in any significant adverse change in the environmental effects detailed in the photomontages of the Revised Scheme. Where new planting is proposed, it has been shown as immature plants which would mature over time to further integrate the Revised Scheme into the landscape.

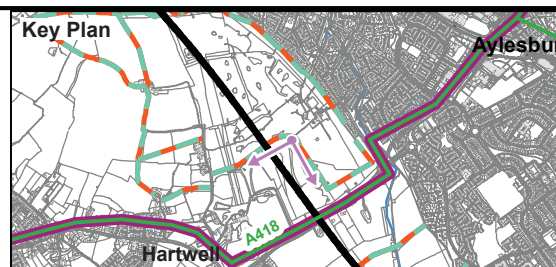


Figure Number	LV-01-301
Figure Name	Verifiable Photomontage Operation Year 1 (2026) - Summer Viewpoint 122-3-001 SES3 and AP4 ES
	Community Forum Area CFA11: Stoke Mandeville and Aylesbury



HS2 Ltd accept no responsibility for any circumstances, which arise from the reproduction of this map after alteration, amendment or abbreviation or if it is issued in part or issued incomplete in anyway.

Registered in England. Registration number 06791686.
 Registered office: One Canada Square, London, E14 5AB.

© Crown copyright and database rights 2015
 Ordnance Survey Licence Number 100049190

Doc Number: C250-ARP-EV-PHO-000-14004-AP04-P01

Date: 24/09/15

This page is left intentionally blank

