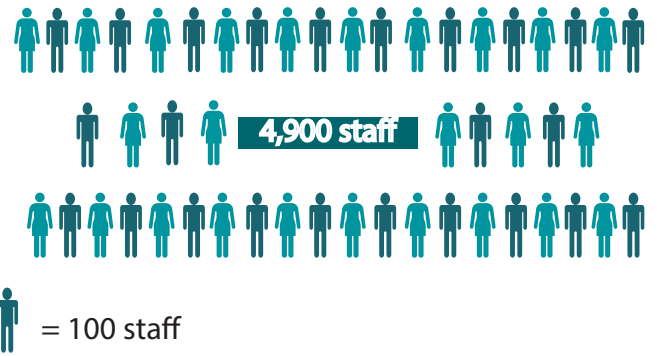
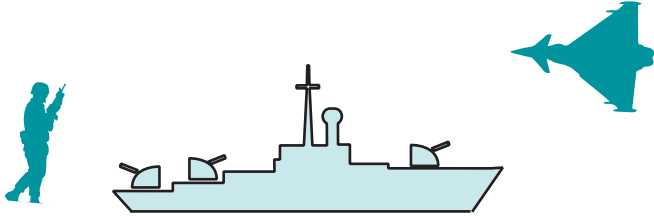


# Factsheet: About DIO

The Defence Infrastructure Organisation (DIO) plays a vital role in supporting our Armed Forces by building, maintaining and servicing what the men and women who serve our country need to live, work, train and deploy on operations.



Supporting the Armed Forces is our top priority. We are responsible for all acquisition, disposal, allocation of assets, construction, and maintenance of estate infrastructure in the UK and abroad. This includes military bases, accommodation for service personnel and their families, and training facilities.



DIO also provides all the catering, cleaning, guarding and other services that keep the military 'on the go'.

## Why was DIO established?

DIO was established in April 2011 following the 2010 Strategic Defence and Security Review and the Defence Reform Review, which was led by Lord Levene. His recommendations led to the Ministry Of Defence (MOD) being reformed to be more efficient and more effective.

DIO is part of the MOD and its creation brought the management of Defence infrastructure together under a single organisation for the first time. Staff who had previously managed infrastructure from other parts of the MOD joined DIO.

We employ some 4,900 people from a diverse range of professions including town planners, airfield pavement experts, foresters and construction engineers.

## How is DIO managed?

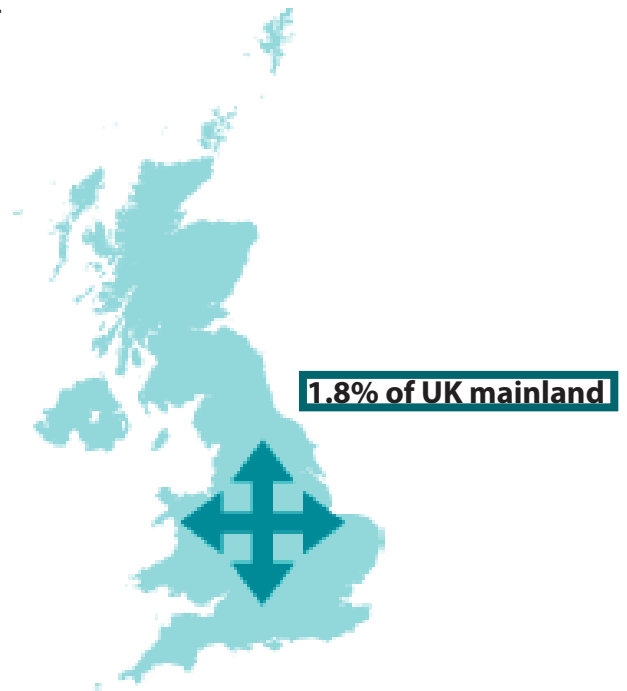
We are led by Chief Executive David Mitchard, supported by an Executive Management Team.

Governance is provided through the Defence Infrastructure Governing Authority (DIGA).

## What is the Defence estate?

The MOD owns a diverse estate measuring nearly 230,000 hectares and holds rights over a further 222,000 hectares, for a total of 452,000 hectares.

In total this represents some 1.8% of the UK mainland and makes MOD one of the largest landowners in the country.



The rural estate amounts to 377,400 hectares and provides various facilities for military training, such as areas for the driving of military vehicles such as tanks and armoured vehicles, areas for infantry manoeuvres and areas for artillery firing.



## Find out more about DIO

You can find out more about DIO from our other factsheets.

These cover the following topics:

- Delivering a safe training estate
- Living Accommodation - homes for heroes
- Water - managing a precious resource
- Using energy wisely
- Wind turbines
- Disposal of surplus land and properties
- Sustainability on the defence estate

You can also find us online:

It is primarily used by the Army, but some areas are also used by the other services, such as the Royal Marines practicing landings or infantry training or the Royal Air Force using air weapons ranges to practice firing from the air.

The rural estate is predominantly open country, much of which is designated as environmentally sensitive and therefore requires specialist management and expertise.

The built estate, on the other hand, covers some 70,000 hectares and comprises naval bases, barracks, airfields and other Defence facilities.



**74,600 hectares**

Our overseas estate includes facilities in Germany, Cyprus, Gibraltar and the South Atlantic, as well as training facilities in Kenya, Belize, Nepal, Norway and Oman.

