

**Accredited Programmes
Annual Bulletin
2014/15, England and Wales**

Ministry of Justice
Statistics bulletin

30 July 2015

Contents

Introduction	3
Key Findings	5
Probation Delivery	7
Overview	7
Domestic Violence programmes	8
General Offending programmes	8
Sex Offending programmes	9
Violence programmes	9
Prison Delivery	10
Overview	10
Domestic Violence programmes	11
General Offending programmes	11
Sex Offending programmes	11
Substance Misuse programmes	12
Violence programmes	12
Background to Probation Accredited Programmes	13
Background to Prison Accredited Programmes	14
References	15
List of tables and figures	16
Data Sources and Data Quality	18
Explanatory notes	19
Contact points	21

Introduction

This publication presents the volumes of accredited programmes delivered across prison and probation in each financial year between 2009/10 and 2014/15.

Prison and probation services have been running accredited Offending Behaviour Programmes since the early 1990s, and this continues under the new arrangements for delivery of probation services. Accreditation is a system for ensuring that treatment programmes offered to offenders, which aim to reduce reoffending, have a proper theoretical basis, and are designed in accordance with the 'What Works' literature.

All of the interventions included within this publication are accredited via the Correctional Services Accreditation and Advisory Panel (CSAAP). It includes programmes that have been designed and developed by NOMS and also programmes designed by external providers such as the Rehabilitation for Addicted Prisoners Trust (RAPt 12 Step programmes) and Delight Services (COVAID). CSAAP accreditation gives the reassurance that programmes are evidence based, based on 'What Works' literature, on existing and emerging research and guidelines in addressing offending behaviour.

It is important to note there are also numerous non-accredited group-based interventions targeted at a range of offender needs which are delivered within the criminal justice system. Data for non-accredited programmes are currently not available.

Many programmes included in this review are no longer accredited, which have been subsequently replaced or are no longer delivered. Accredited programmes are routinely reviewed as part of the CSAAP process for accreditation. CSAAP can grant accreditation for a period of up to five years, at which point a programme must be resubmitted. The accreditation process includes reviewing the latest theory and evidence that underpins a programme to ensure that they are as effective as possible in reducing reoffending. This can result in minor changes being required to a programme, or an entirely new programme being developed. Re-accreditation may also not be sought if there has been a substantial drop in the need for a programme.

NOMS has a range of accredited programmes, varying in length, complexity and mode of delivery. Programmes have been developed to target the particular risks and needs for different types of offending behaviour. To achieve accreditation, programmes must be assessed to make sure they are targeting the right people, focusing on the right things, and being delivered in a way that is most likely to reduce reoffending. All NOMS accredited programmes are monitored to give programme integrity.

In this publication, programmes are grouped into one of five categories: Domestic Violence, General Offending, Sex Offending, Substance Misuse or Violence. A brief description of each of group of offending behaviour programmes is provided below.

- Domestic Violence programmes are targeted at males who have offended against an intimate partner within the context of a heterosexual relationship. The aim is to reduce violent behaviour in intimate relationships.
- General Offending programmes consist of a range of interventions based on life skills acquisition and cognitive behavioural theory. They are designed to address the link between thinking, attitudes, beliefs and offending. Offenders

are encouraged to learn and practice life skills, such as problem solving, social skills, self-control and positive relationships, that will help them on their journey towards desistance from offending.

- Sex Offending programmes aim to reduce offending by adult male sex offenders. Sexual offending does not have a single cause, and so treatment needs to address a range of risk factors. NOMS provides a range of programmes which are offered according to the level of risk and need of the offender. A treatment pathway for males with intellectual disabilities is also available.
- NOMS accredited substance misuse interventions are recovery focused, and include a range of programmes based on life skills acquisition, cognitive behavioural theory, a therapeutic community, a 12 Step abstinence approach and a programme which combines cognitive behavioural and educational approaches. All of the programmes are designed to address the link between substance use and offending. It should be noted that the NOMS suite uses the umbrella term of 'substance misuse interventions' which covers both alcohol and drug treatment, with some programmes addressing both.
- NOMS Violence programmes have expanded from moderate dose cognitive skills and anger management programmes to more specialised and high intensity programmes for high risk and personality disordered males and women. The current suite of programmes incorporates the most contemporary research and evidence in neuro-cognition and desistance theories and methods. The programmes also target associated and contributory risk factors including weapons and peer/gang related behaviours as well as work on identity.

For the purposes of this publication, a programme start is counted as attendance at the first session of the programme and a programme completion is counted on attendance at the last session of the programme. This may differ from information on accredited programmes published elsewhere, such as for the purposes of monitoring performance against service level agreements and delivery requirements (e.g. the NOMS Annual Report Management Information Addendum, and the Prison Digest)¹.

Programmes may also have other components which do not form part of these statistics, for example, pre and post evaluation measures, post-programme reports and pre and/or post programme sessions with the Offender Manager.

These data should not be used for the purposes of attempting to calculate completion rates. Starts from one year may complete in a subsequent year, and completions in one year may have started in a previous year.

¹ NOMS Annual Report Management Information Addendum and Prison Digest are published annually at www.gov.uk/government/collections/prison-and-probation-trusts-performance-statistics

Key Findings

In Probation:

- During 2014/15 there were 14,023 accredited programme starts or 9.6 starts per 100 offenders.
- Domestic Violence programmes and General Offending programmes account for the highest proportion of starts (34% each in 2014/15), while Violence programmes accounted for the lowest proportion (6%).
- The overall volume of accredited programme delivery has decreased by 44% since 2009/10, from 24,972 starts in 2009/10 to 14,023 in 2014/15. Similar trends were seen for completions.
- The overall volume of accredited programme delivery has decreased by 11% since 2013/14, from 15,819 starts in 2013/14 to 14,023 in 2014/15.
- The sharpest decrease was for Substance Misuse programmes, where starts fell by over 76% in five years from 7,374 starts in 2009/10 to 1,766 in 2014/15. The reduction since 2013/14 was 606 (26%) This reduction is due in part to courts using alternatives to accredited programmes when sentencing.
- The number of offenders starting General Offending programmes has fallen by 44% since 2010/11 from 8,398 in 2009/10 to 4,717 in 2014/15. Since 2013/14 the number has fallen by 908 (16%). This reduction can be attributed to a greater focus of resources on high risk offenders and on violence and sexual offending in recent years.
- 2014/15 saw a 40% reduction in offenders completing Sex Offending Treatment programmes compared to 2013/14 and a 9% reduction in starts. The differential in starts and completions is thought to be due to the rise in conviction rates for sexual offenders in 2014/15 preventing offenders on probation Sex Offending programmes from completing programmes.

In Prisons:

- During 2014/15 there were 8,523 accredited programme starts delivered in prisons, a rate of 11.9 starts per 100 offenders.
- General Offending programmes accounted for the highest proportion of all programme starts (54%), followed by Violence (20%). Domestic Violence programmes accounted for the lowest proportion (3%).
- The overall volume of accredited programme delivery has decreased by 5% since 2013/14, from 8,995 starts in 2013/14 to 8,523 in 2014/15.
- The number of accredited programme starts in prison has decreased by 56% since 2009/10, from 19,528 starts in 2009/10 to 8,523 in 2014/15. Similar trends were seen for completions. The main reason for the overall reduction is the decrease in Substance Misuse programmes (starts fell by 91% since 2009/10). This reduction is due to a significant shift in the way substance misuse interventions are funded and commissioned which has resulted in a number of local partnerships opting to deliver non-accredited programmes.

- The number of prisoners starting General Offending programmes has fallen by over a third since 2009/10. This reduction is driven by the greater focus of resources on violence programmes.
- Delivery of Domestic Violence and Violence programmes have both nearly doubled since 2009/10 from 158 starts in 2009/10 to 290 starts in 2014/15 and 880 starts in 2009/10 to 1,683 starts in 2014/15 respectively. These increases have been driven by the focus of resources on violence and sexual offending in recent years.

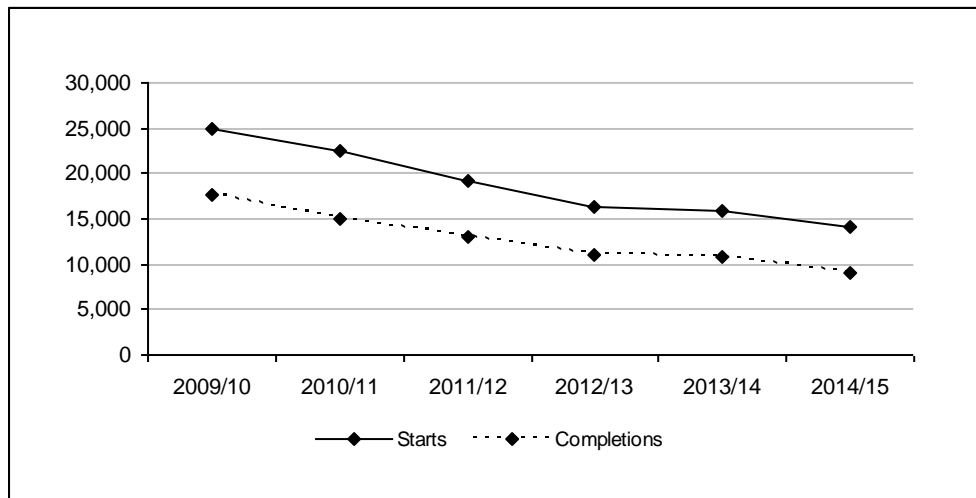
Probation Delivery

Overview

There were 14,023 probation accredited programmes started in 2014/15 or 9.6 starts per 100 offenders.

The number of offenders starting probation accredited programmes fell by 44% in the last five years, from 24,972 programme starts in 2009/10 to 14,023 in 2014/15. A similar downward trend was observed for completions. The number of starts has fallen by 11% (1,796) since 2013/14.

Figure 1: Accredited programme starts and completions delivered by probation, 2009/10 to 2014/15



The number of starts has fallen for General Offending, Substance Misuse and Violence programmes since 2009/10. The sharpest reduction in starts was amongst Substance Misuse programmes, which fell by 76%.

The number of offenders starting Sex Offender treatment programmes has remained more stable across the last five years, varying between 1,916 in 2014/15 and 2,136 in 2011/12. Completions of Sex Offender Treatment Programmes dropped by 40% in 2014/15 compared to the previous year due in part to the rise in convictions for sexual offending. The rise in convictions would also have reduced to some extent the number of starts.

Figure 2: Number of starts delivered by probation by programme category, 2009/10 to 2014/15

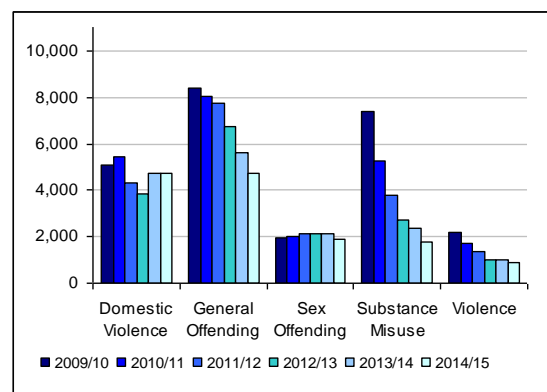
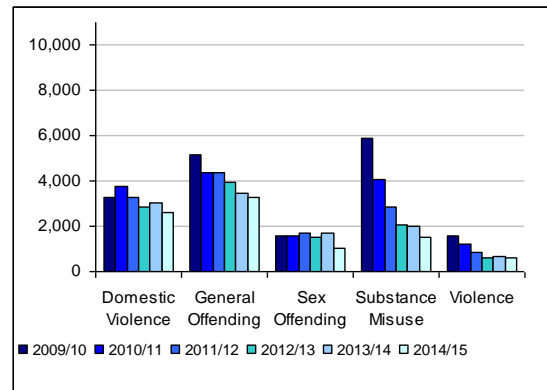


Figure 3: Number of completions delivered by probation by programme category, 2009/10 to 2014/15



In 2014/15, Domestic Violence programmes and General Offending programmes accounted for the highest proportion of all programme starts in probation (both 34%), whereas Violence programmes accounted for the lowest proportion (6%).

The most common categories of programmes amongst female offenders were General Offending (51%) and Substance Misuse (47%) programmes, whereas for male offenders, the programmes with the highest proportion of starts were in Domestic Violence programmes (35%), followed by General Offending programmes (33%). It should be noted however that eligibility varies across programmes.

44% of all programme starts for BME offenders were General Offending programmes compared to 32% for White offenders, and 34% across all ethnic groups.

70% of programme starts for 15-20 year olds were General Offending compared to 34% of starts in total. 42% of programme starts for 40-49 year olds were Domestic Violence compared to 34% of starts across all age groups. 20% of programme starts for 50-59 year olds were Substance Misuse compared to 13% of starts overall. Sex Offender treatment programmes account for 72% of starts amongst offenders over 60 years of age.

Domestic Violence programmes

In 2014/15, Domestic Violence programmes accounted for 34% of all starts on probation accredited programmes with 4,727 starts, which is very close to the number in 2013/14. This represents a 7% reduction in starts in this programme category in five years, from 5,100 starts in 2009/10. This reduction in part reflects the greater focus on programmes for higher risk offenders and prioritised resources on the reduction of sexual offending.

The delivery of Domestic Violence programmes has changed since 2009/10 with the replacement of Community Domestic Violence and Integrated Domestic Abuse programmes, by the newer Building Better Relationships Programme.

General Offending programmes

In 2014/15, there were 4,717 offenders who started on General Offending programmes, accounting for 34% of all probation accredited programme starts. This represents a 16% fall in starts since 2013/14 when there were 5,625 starts.

As with Domestic Violence programmes, this reduction in part reflects the change of focus onto higher risk offenders.

The Thinking Skills Programme currently accounts for the majority of general offending programmes. The reduction in starts on this programme has been in line with tightening of eligibility criteria introduced after 2011/12.

Sex Offender Treatment Programmes

In 2014/15, there were 1,916 offenders who started Sex Offender Treatment Programmes, accounting for 14% of all probation accredited programme starts. This represents a 1% fall in starts since 2009/10 when there were 1,934 starts and a fall of 9% (200) on 2013/14.

The Community Sex Offender Groupwork Programme, Northumbria Sex Offender Groupwork Programme and Thames Valley Sex Offender Groupwork Programme are considered to be equivalent programmes, and fell by 7% from 2009/10 to 2014/15. In contrast to these programmes, starts on the Internet Sex Offender Treatment Programme rose by 22% over the same period.

Compared to last year (2013/14), there was a substantial drop in Sex Offender treatment programme completions, where there was a 40% drop from 1,729 in 2013/14 to 1,037 in 2014/15. This is due in part to the rise in conviction rates for sexual offences preventing offenders from completing probation sexual offending programmes. This was driven by a 57% fall in Internet Sex Offender Treatment Programme completions, and a fall of 33% in Community/Northumbria/Thames Valley Groupwork Programme completions.

Substance Misuse programmes

In 2014/15, there were 1,766 offenders who started Substance Misuse programmes, accounting for 13% of all probation accredited programme starts. This represents a 76% fall in starts since 2009/10 when there were 7,374 starts, with there being a similar fall for completions.

The reduction in accredited substance misuse interventions may in part be due to courts using different alternatives to accredited programmes (e.g Drug Rehabilitation Requirements (DRRs) and Alcohol Treatment Requirements (ATRs).)

The substance misuse programme with the highest volumes of starts is the Drink Impaired Drivers programme. Changes to the number of starts on this particular programme have also driven the overall fall in substance misuse programme starts, with a fall of 75% (2651) since 2009/10. The reduction since 2013/14 was 26% (606).

Violence programmes

In 2014/15, there were 897 offenders who started Violence programmes, accounting for 6% of all probation accredited programme starts. This represents a 59% fall in starts since 2009/10 when there were 2,166 starts, with there being a similar fall for completions. The number of starts fell by 9% (90) since 2013/14.

It is unclear whether earlier reduction in delivery has corresponded with an increase in the delivery of alternative interventions

The programmes within this category have changed since 2009/10 with Aggression Replacement Training and Controlling Anger and Learning to Manage It programmes being replaced by the RESOLVE programme.

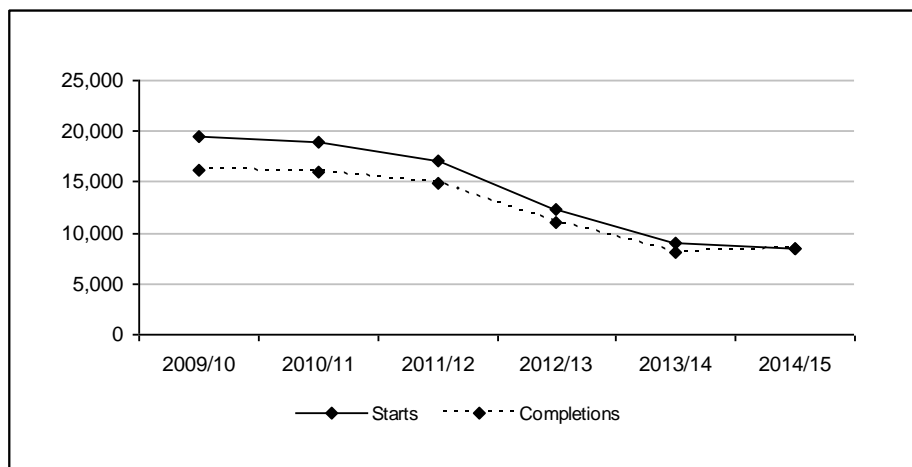
Prison Delivery

Overview

There were 8,523 prison accredited programme starts in 2014/15, a rate of 11.9 starts per 100 offenders.

There has been a 56% reduction in programme starts from 2009/10 to 2014/15, from 19,528 in 2009/10 to 8,523 in 2014/15. A similar trend has been seen for completions.

Figure 4: Accredited programme starts and completions delivered in prison, 2009/10 to 2014/15



The overall reduction has been driven by a 91% fall in Substance Misuse programmes and a 36% reduction in General Offending programmes since 2009/10. This reduction is due to a significant shift in the way substance misuse interventions are funded and commissioned which has resulted in a number of local partnerships opting to deliver non-accredited programmes. Other volume changes may be due to a shift from programmes for lower risk offenders and a reinvestment in programmes for higher risk offenders

The number of Sex Offender Treatment programme starts and completions has remained more stable between 2009/10 and 2014/15, varying between 934 in 2013/14 and 1,189 in 2010/11.

Figure 5: Number of starts delivered in prison by programme category, 2009/10 to 2014/15

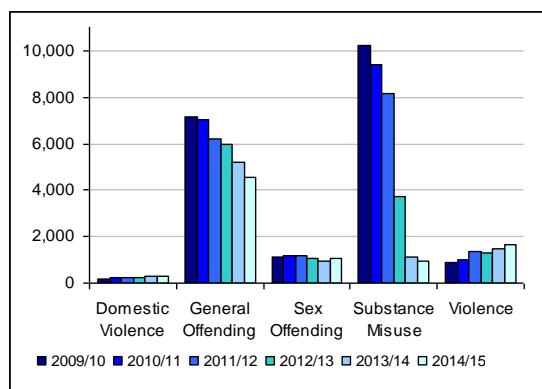
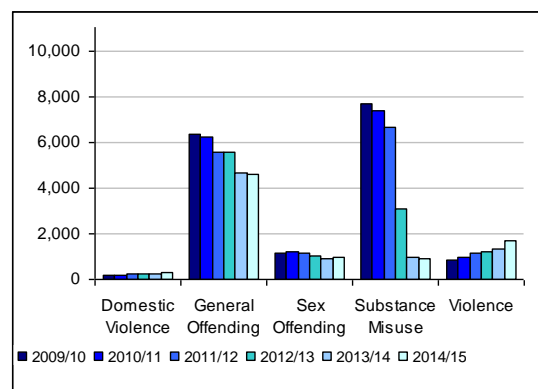


Figure 6: Number of completions delivered in prison by programme category, 2009/10 to 2014/15



In 2014/15, General Offending programmes accounted for 54% of all programme starts in custody, while Domestic Violence programmes accounted for the lowest proportion of starts (3%).

95% of all accredited programme starts in prison, involved male prisoners. 77% of programme starts for female prisoners were for General Offending programmes. Amongst males, the highest proportion of programme starts were in the General Offending category (53%), followed by Violence programmes (20%).

69% of programme starts for 15-20 year olds were for General Offending programmes, compared to 54% of starts in total. 23% of programme starts for 25-29 year olds were Violence programmes compared to 20% of starts in total.

60% of all programme starts for BME offenders were for General Offending programmes, compared to 52% for White offenders, and 54% of starts overall.

Domestic Violence programmes

In 2014/15, Domestic Violence programmes accounted for 3% of all prison accredited programme starts with 290 starts the same number as in 2013/14.

General Offending programmes

In 2014/15, General Offending programmes accounted for 54% of all accredited programmes in prisons, with 4,583 starts. This represents a fall of 12% (618) on 2013/14. This reduction in part reflects the greater focus on programmes for higher risk offenders, prioritising resources on the reduction of violence.

The Thinking Skills Programme accounted for the majority of starts in 2014/15 (3,812).

Sex Offender Treatment programmes

In 2014/15, Sex Offending programmes accounted for 12% of all accredited programme starts in prisons, with 1,046 starts. This represents an increase of 12% (112) on 2013/14.

The overall reduction in sex offending programmes has been driven by the stopping of the Rolling Programme and the Better Lives Booster programme.

Core Programme was the most delivered programme with 696 starts, which was a 37% rise on 2013/14.

These changes are in line with NOMS commissioning strategy, and reflect the shift from low intensity to high intensity programmes in order to target high risk sex offenders.

Substance Misuse programmes

In 2014/15, Substance Misuse programmes accounted for 11% of all accredited programme starts in prisons, with 921 starts. This represents a 91% fall from 10,206 starts in 2009/10 and a fall of 18% (199) starts on 2013/14. A similar trend was seen for completions.

The long-term reduction can be attributed in part to the significant shift in the way substance misuse interventions were both funded and commissioned. As of 1 April 2011, the Department of Health became responsible for funding drug and alcohol treatment services in prisons and the community in England. This has meant that the responsibility for deciding which drug and alcohol prevention, treatment and recovery services to commission and fund has been devolved to local partnerships as these are best placed to determine what is required to meet local needs. As a result, a number of local partnerships have opted to deliver non-CSAAP accredited programmes in prisons.

72% of Substance Misuse programme starts in 2014/15 were onto the Building Skills for Recovery programme, with most of the suite of programmes available in 2009/10 no longer provided by NOMS.

Violence programmes

In 2014/15, Violence programmes accounted for 20% of all accredited programme starts in prisons, with 1,683 starts. This represents a rise of (16%) 233 since 2013/14 and a 91% rise from 880 starts in 2009/10. A similar trend was seen for completions.

This increase in part reflects the greater focus on programmes for higher risk offenders, prioritising resources on the reduction of violence.

In 2014/15 the programme RESOLVE accounted for the majority of Violence programme starts, with 1,417 starts. It replaced the Controlling Anger and Learning to Manage It programme, which had 793 starts in 2009/10.

The 'Self Change' Programme is an updated version of the 'Cognitive Self Change Programme', and is now delivered more times (201 starts) than the 'Cognitive Self Change Programme' delivered in 2009/10 (38 starts).

Background to Probation Accredited Programmes

Programmes are delivered in the community as a requirement of a Community Order under Section 202 of the Criminal Justice Act 2003 or as a licence condition on release from a custodial sentence; occasionally an Offender Manager may refer directly to a programme. In most cases referrals will result from a court report, either a Standard Delivery Report (SDR) or a Fast Delivery Report (FDR). In preparation of court reports, report writers will have assessed suitability for programmes primarily based on information from the Offender Assessment System (OASys).

Offenders should only be referred to programmes where they meet the criteria specified for each programme. A process is in place to pass referrals to the local programmes unit, who in all cases should confirm the assessment of suitability for the programme prior to allocating a place to an offender. If the offender is suitable they will be placed on a waiting list until a programme is available.

Non-compliance with the programme requirement includes, for example, missing more than the number of sessions permitted. Non-attendance can arise for a number of reasons, particularly in rural areas or in circumstances where offenders are travelling long distances to attend programmes. Employment, child-care and the sequencing of other interventions may all impact on attendance. Non-compliance can also include continued disruptive behaviour in a group or refusal to complete prescribed pre-programme work.

Factors external to the programme requirement include non-compliance with other components of an offender's sentence, for example, failing to attend other appointments or repeated failure of mandatory drugs tests where the programme forms part of a structured drug treatment intervention. Offenders may also be re-sentenced due to breach, for committing further offences, or where applicable may have the custodial element of a Suspended Sentence Supervision Order activated.

Transforming Rehabilitation

On 1 June 2014, as part of the Transforming Rehabilitation reforms to probation, responsibility for delivery of probation services moved from 35 probation trusts to 21 Community Rehabilitation Companies (CRCs) and the National Probation Service (NPS). On 1 February 2015, CRCs moved into the private sector.

CRCs are responsible for managing offenders who pose a low or medium risk of serious harm. The NPS is responsible for managing offenders who pose a high risk of serious harm and those who have committed the most serious offences. The CRCs also have a new responsibility for supervising short-sentence prisoners (those sentenced to less than 12 months in prison) after release. The NPS also provides advice to the courts on issues such as sentencing, determines whether offenders should be allocated to a CRC or to the NPS, and deals with enforcement action for offenders who are alleged to have breached a court order.

Background to Prison Accredited Programmes

Referrals to accredited programmes will usually come from Offender Managers, primarily based on information from OASys (Offender Assessment System) and any other relevant information available. For democratic therapeutic community interventions, referrals may also come directly from the offender. Offender Managers should review the assessment and develop the sentence plan within a few weeks of the offender's arrival into prison.

The Treatment/Therapy Manager of the programme is then responsible for informing the Offender Management Unit in the prison, who in turn will inform the Offender Manager whether the offender is suitable for the programme. If the offender is suitable, attendance on the programme will form part of the overall sentence plan.

There are a number of reasons that prisoners may not complete programmes. Facilitators may recommend de-selection, for example due to a lack of engagement, or a prisoner may voluntarily withdraw from a programme. Other reasons include misconduct, failure of drugs tests where the programme forms part of a structured drug treatment intervention, or operational factors such as discharge from prison or transfer to another prison.

References

[Glossary of Accredited Programmes](#)

Prison and Probation Statistics (www.gov.uk/government/organisations/ministry-of-justice/series/prisons-and-probation-statistics)

Prison Service Orders (www.justice.gov.uk/offenders/psos)

Prison Service Instructions (www.justice.gov.uk/offenders/psis)

Probation Service Instructions (www.justice.gov.uk/offenders/probation/probation-instructions)

NOMS Commissioning (www.justice.gov.uk/about/noms/commissioning)

List of tables and figures

This is a list of accredited programme starts and completions tables and figures. Figures 1 to 6 are included in this publication. The remaining tables are available from the website:

www.gov.uk/government/collections/prisons-and-probation-statistics

	Description	Period
	Overview - Figures	
1	Accredited programme starts and completions delivered by Probation	2009/10 to 2014/15
2	Accredited programme starts delivered by Probation by programme category	2009/10 to 2014/15
3	Accredited programme completions delivered by Probation by programme category	2009/10 to 2014/15
4	Accredited programme starts and completions delivered in prison	2009/10 to 2014/15
5	Accredited programme starts delivered in prison by programme category	2009/10 to 2014/15
6	Accredited programme completions delivered in prison by programme category	2009/10 to 2014/15
	Annex Tables - Probation	
1.1	Probation programme starts by programme	2009/10 to 2014/15
1.2	Probation programme completions by programme	2009/10 to 2014/15
1.3	Probation programme starts per 100 offenders	2009/10 to 2014/15
1.4	Probation programme completions per 100 offenders	2009/10 to 2014/15
1.5	Probation proportion of starts by programme category	2009/10 to 2014/15
1.6	Probation proportion of completions by programme category	2009/10 to 2014/15
1.7	Probation programme starts by gender	2009/10 to 2014/15
1.8	Probation programme completions by gender	2009/10 to 2014/15
1.9	Probation programme starts by ethnicity	2009/10 to 2014/15
1.10	Probation programme completions by ethnicity	2009/10 to 2014/15
1.11	Probation programme starts by age band	2009/10 to 2014/15
1.12	Probation programme completions by age band	2009/10 to 2014/15
	Annex Tables - Prison	
2.1	Prison programme starts by programme	2009/10 to 2014/15
2.2	Prison programme completions by programme	2009/10 to

		2014/15
2.3	Prison programme starts per 100 sentenced prisoners	2009/10 to 2014/15
2.4	Prison programme completions per 100 sentenced prisoners	2009/10 to 2014/15
2.5	Prison proportion of starts by programme category	2009/10 to 2014/15
2.6	Prison proportion of completions by programme category	2009/10 to 2014/15
2.7	Prison programme starts by gender	2009/10 to 2014/15
2.8	Prison programme completions by gender	2009/10 to 2014/15
2.9	Prison programme starts by ethnicity	2009/10 to 2014/15
2.10	Prison programme completions by ethnicity	2009/10 to 2014/15
2.11	Prison programme starts by age band	2009/10 to 2014/15
2.12	Prison programme completions by age band	2009/10 to 2014/15

Data Sources and Data Quality

The probation data presented in this publication are drawn from the Integrated Accredited Programmes System (IAPS), an operational database now used by NPS and CRCs for the management of programme caseloads. However, historical data for Greater Manchester Probation Trust are only available on IAPS from 2011/12 onwards. Data for this Trust for 2009/10 and 2010/11 were drawn from manual collections. Cheshire data migrated to IAPS from their previous administrative system is available but has not been fully validated for 2009/10 and 2010/11. The processes for capturing CSCP Block 6 data were revised during 2012/13 as there may have been under-reporting of this programme due to records not being entered onto IAPS.

In the community, offenders may attend a programme over the course of consecutive or concurrent court orders. To limit double counting of offenders where one programme attendance may be split across two sentenced requirements a two-step correction has been performed on the data. Where an offender has more than one referral for the same programme and the same sentence date, only the earlier start date has been retained. Where an offender has more than one referral for the same programme, but with a different sentence date only the earlier start date has been retained if 1) the termination reason is 'Continued on new case' or 'Revoked/terminated – other sentence' or 'Transferred out of area' and 2) the first recorded attendance under the subsequent referral has been started within six months of the last recorded attendance under the previous referral.

The prison data presented in this publication are drawn from NOMS prison data collections which are comprised of course level treatment returns sent in by prison establishments on a monthly basis. Chromis programmes data are aggregated from individual course modules rather than the intervention as a whole. Prisoners may have multiple block starts and completions depending on their pathway through the programme. For this publication, completions for Democratic Therapeutic Communities have been defined as the end of therapy or exit from the therapeutic environment, whichever is the earliest date. Objectives must have been met to count as completed. Data are not currently available for 2009/10 as outcomes were not collected in a standardised way until part way through that year. Historical data and the method of defining end of therapy are currently being reviewed, and these figures may be subject to amendment in a subsequent release of this publication.

In both settings, some offenders may have more than one start counted for an equivalent programme. For example, if an offender had started Think First during the implementation of the replacement Thinking Skills Programme and been instructed to restart the new programme, they would be included in the starts data for both programmes.

Quality assurance processes are built into both probation and prison data collections. Although care is taken when processing and analysing the data, the information collected is subject to the inaccuracies inherent in any large scale recording system. While the figures shown have been checked as far as practicable, they should be regarded as approximate and not necessarily accurate to the last whole number shown in the tables.

Explanatory notes

The statistics in this bulletin relate to accredited programme starts and completions in probation and prison in England and Wales for the financial years 2009/10 to 2014/15.

Symbols and conventions

..	not available
0	nil or less than half the final digit shown
-	not applicable
(p)	Provisional data
(r)	Revised data

Users and uses of these Statistics

The statistics included in this publication are intended to meet a broad spectrum of user needs as shown below.

User	Summary of main statistical needs
MOJ Ministers	Use the statistics to monitor the provision of accredited programmes and whether need in these areas is being met
MPs and House of Lords	Statistics are used to answer parliamentary questions
Policy teams	Statistics are used to inform policy development, to monitor impact of changes over time and to model future delivery and their impact on the system
Agencies responsible for offender management	Current and historical robust administrative data are used to support management information at national and local levels to complement their understanding of the current picture and trends over time and support operational delivery
Academia, students and businesses	Used as a source of statistics for research purposes and to support lectures, presentations and conferences
Journalists	Used as a compendium of robust data on volumes so that an accurate and coherent story can be told on the provision of accredited programmes
Voluntary sector	Data are used to monitor trends in the delivery of different programme types, to reuse the data in their own briefing and

	research papers and to inform policy work and responses to consultations.
General public	Data are used to respond to ad-hoc requests and requests made under the Freedom of Information Act.

Related publications

Offender Management Statistics Quarterly Bulletin²: This provides key statistics relating to offenders who are in prison or under Probation Service supervision. It covers flows into these services (receptions into prison or probation starts) and flows out (discharges from prison or probation terminations) as well as the caseload of both services at specific points in time.

Release Schedule

This bulletin was published on 30/07/2015 and includes statistics for each financial year between 2009/10 and 2014/15.

The next publication of accredited programme starts and completions is scheduled to be published on 28/07/2016 and will update these statistics to also include the financial year 2015/16.

This publication will be reviewed annually with a view to expanding the breadth of the available data. For example, there may be the potential to include data on completion rates. We would welcome views on how this publication could be expanded.

² Offender Management Statistics [/www.gov.uk/government/collections/offender-management-statistics-quarterly](http://www.gov.uk/government/collections/offender-management-statistics-quarterly)

Contact points

Press enquiries should be directed to the Ministry of Justice press office:

Tel: 020 3334 3536

Other enquiries about these statistics should be directed to:

Kate Shaw
Planning and Analysis Group
NOMS Agency
Clive House
70 Petty France
London
SW1H 9EX
Tel: 030 0047 6286

General enquiries about the statistical work of the Ministry of Justice can be e-mailed to:

statistics.enquiries@justice.gsi.gov.uk

General information about the official statistics system of the UK is available from

statisticsauthority.gov.uk/about-the-authority/uk-statistical-system

Ministry of Justice publishes data relating to offender management in England and Wales. Equivalent statistics for Scotland and Northern Ireland can be found at:

www.scotland.gov.uk/Topics/Statistics/Browse/Crime-Justice

www.dojni.gov.uk/index/statistics-research/stats-research-publications.htm

Alternative formats are available on request from

statistics.enquiries@justice.gsi.gov.uk

© Crown copyright. Produced by the Ministry of Justice.