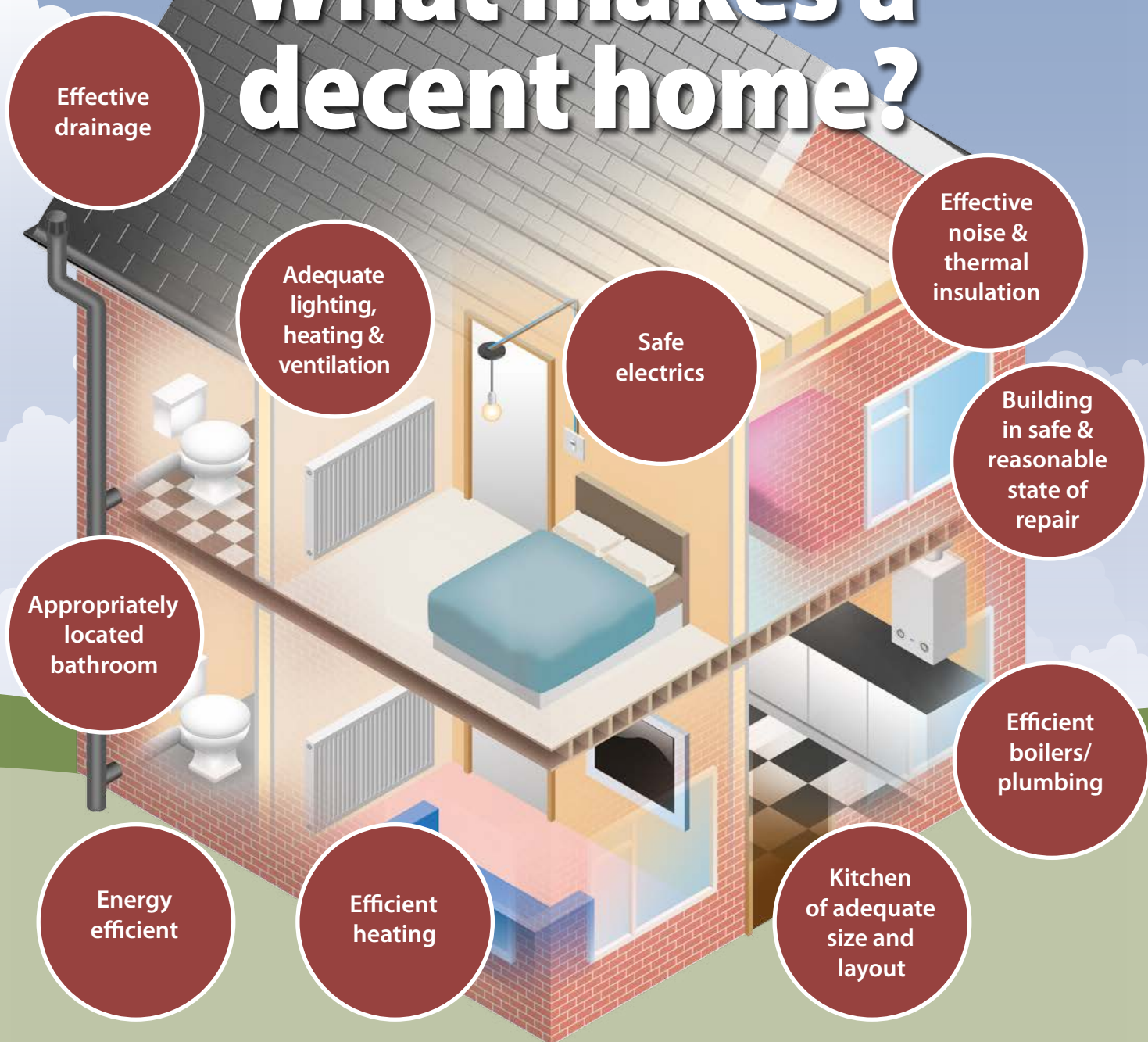


What makes a decent home?



The **Combined Accommodation Assessment System (CAAS)** will be introduced from April 2016 to replace the current 4TG system for calculating SFA charges. CAAS will cover condition, scale and location. Condition will be based on Decent Homes Standard (DHS) which is a modern, measured national standard.

More information on DHS can be found at: <http://www.communities.gov.uk/publications/housing/decenthome>

The roadmap to fairer charges

- Details released on the Combined Accommodation Assessment System
- Survey of properties
- Estimates of rent bandings sent to householders
- Final confirmation of CAAS Bandings issued on a rolling basis
- New charging rates come into effect

