



17 December 2014

Year: 2014 Week: 50

## In This Issue:

- Key messages.
- Diagnostic indicators at a glance.
- GP practices and denominator population.
- National syndromic indicators.
- Notes and further information.
- Appendix.

## Key messages

Data to: 14 December 2014

Consultation rates for influenza-like illness (ILI) continued to increase during week 50 (fig 2). ILI rates continue to increase in age groups over 5+ years with the highest rates in the 5-14 and 15-44 year age groups (fig 2a). Although the highest ILI rates are in London, note these are historically higher than the national rate (online data spreadsheet),

Consultation rates for severe asthma continue to rise; rates are slightly above seasonally expected levels, particularly in the 5-14 years age group (fig 10-10a).

A Cold Watch System operates in England from 1 November to 31 March each year. As part of the Public Health England Cold Weather Plan for England the PHE Real-time Syndromic Surveillance team will be monitoring the impact of cold weather on syndromic surveillance data during this period.

Cold weather alert level (current reporting week): **Level 1/2 – Winter preparedness and action/Alert and readiness**

## Diagnostic indicators at a glance:

Indicator	Trend	Level
Upper respiratory tract infection	increasing	similar to baseline levels
Influenza-like illness	increasing	similar to baseline levels
Pharyngitis	increasing	above baseline levels
Scarlet fever	increasing	above baseline levels
Lower respiratory tract infection	increasing	above baseline levels
Pneumonia	increasing	similar to baseline levels
Gastroenteritis	no trend	similar to baseline levels
Vomiting	no trend	below baseline levels
Diarrhoea	decreasing	similar to baseline levels
Severe asthma	increasing	above baseline levels
Wheeze	no trend	above baseline levels
Allergic rhinitis	no trend	similar to baseline levels
Conjunctivitis	increasing	below baseline levels
Mumps	no trend	below baseline levels
Measles	no trend	similar to baseline levels
Rubella	no trend	similar to baseline levels
Pertussis	decreasing	similar to baseline levels
Chickenpox	increasing	similar to baseline levels
Herpes zoster	no trend	similar to baseline levels
Cellulitis	no trend	above baseline levels
Impetigo	no trend	above baseline levels

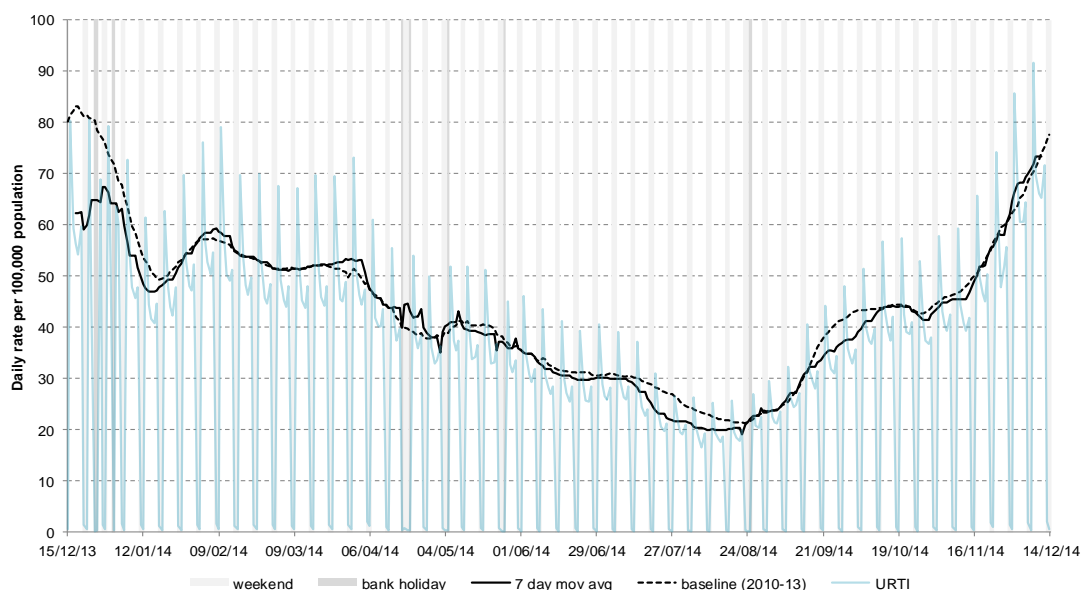
## GP practices and denominator population:

Year	Week	GP Practices Reporting**	Population size**
2014	50	3055	22.5 million

\*\*based on the average number of practices and denominator population in the reporting working week.

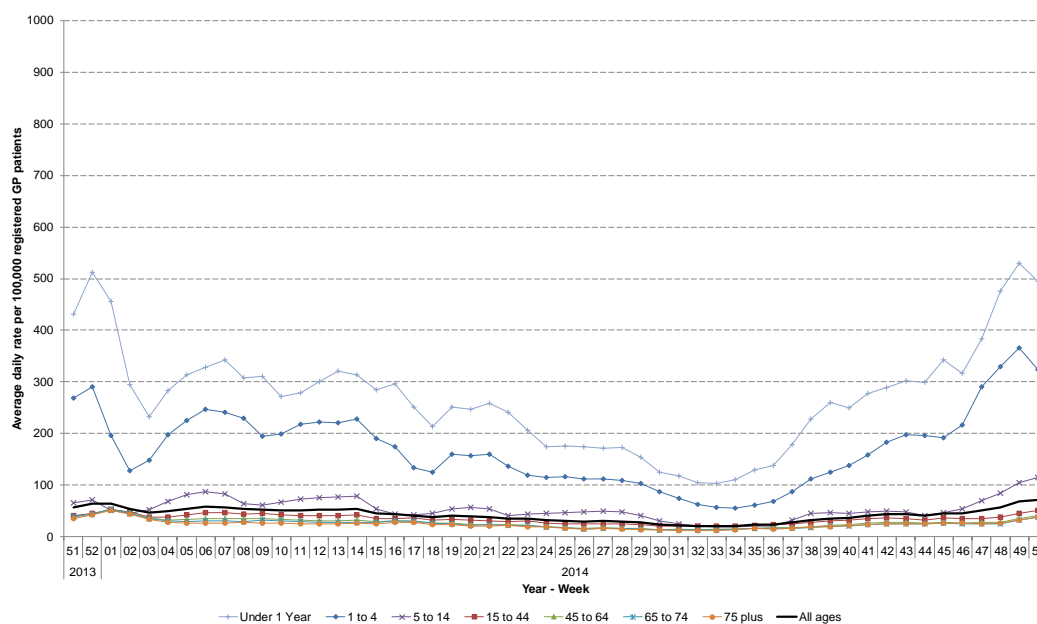
## 1: Upper respiratory tract infection (URTI)

Daily incidence rate (and 7-day moving average\*) per 100,000 population (all England, all ages).



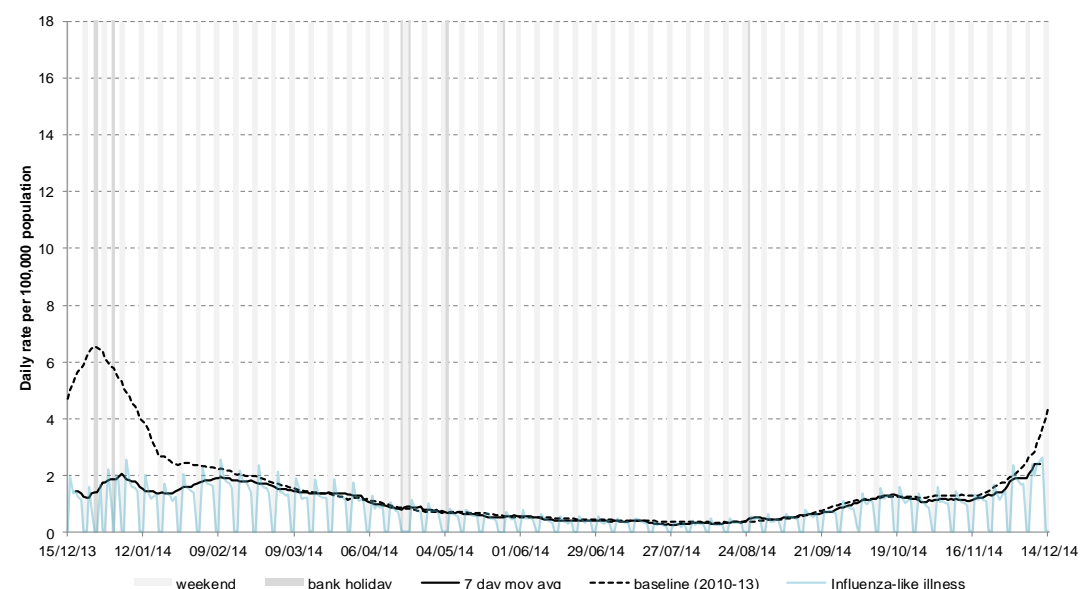
## 1a: Upper respiratory tract infection (URTI) by age

Average daily incidence rate by week per 100,000 population (all England)



## 2: Influenza-like illness (ILI)

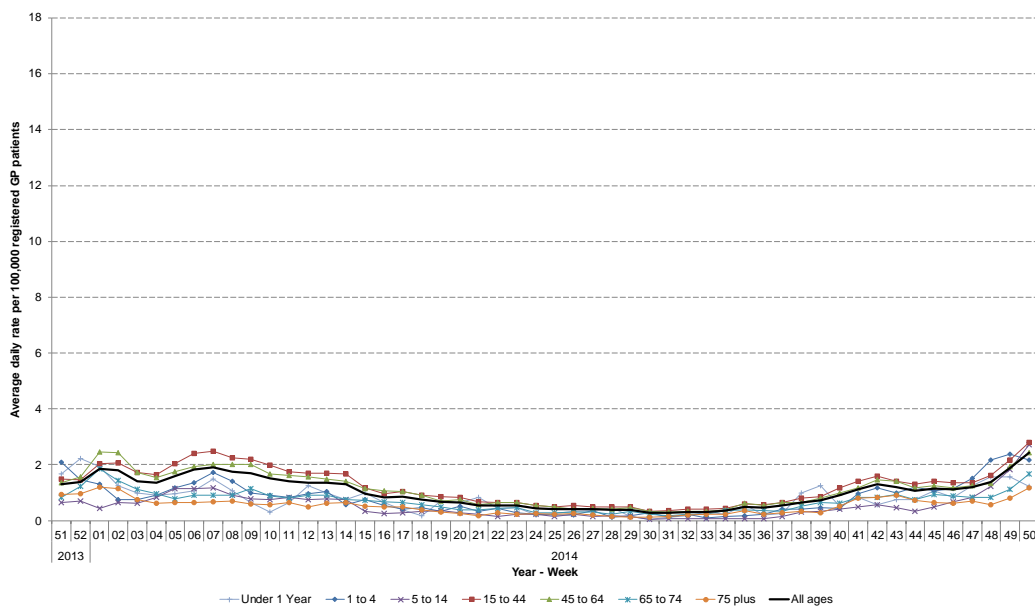
Daily incidence rates (and 7-day moving average\*) per 100,000 population (all England, all ages).



\* 7-day moving average adjusted for bank holidays.

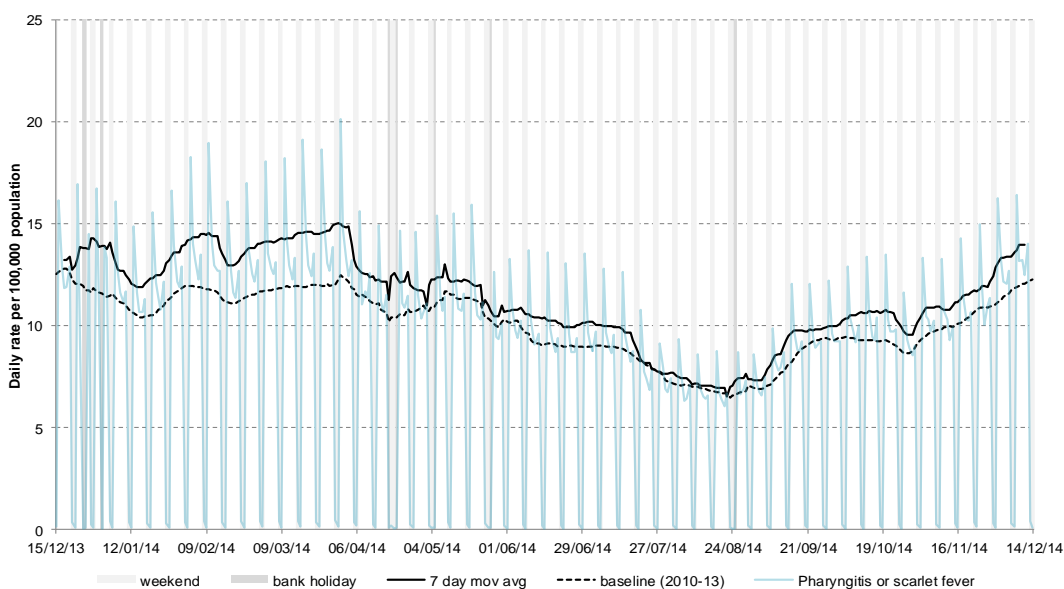
## 2a: Influenza-like illness (ILI) by age

Average daily incidence rate by week per 100,000 population (all England)



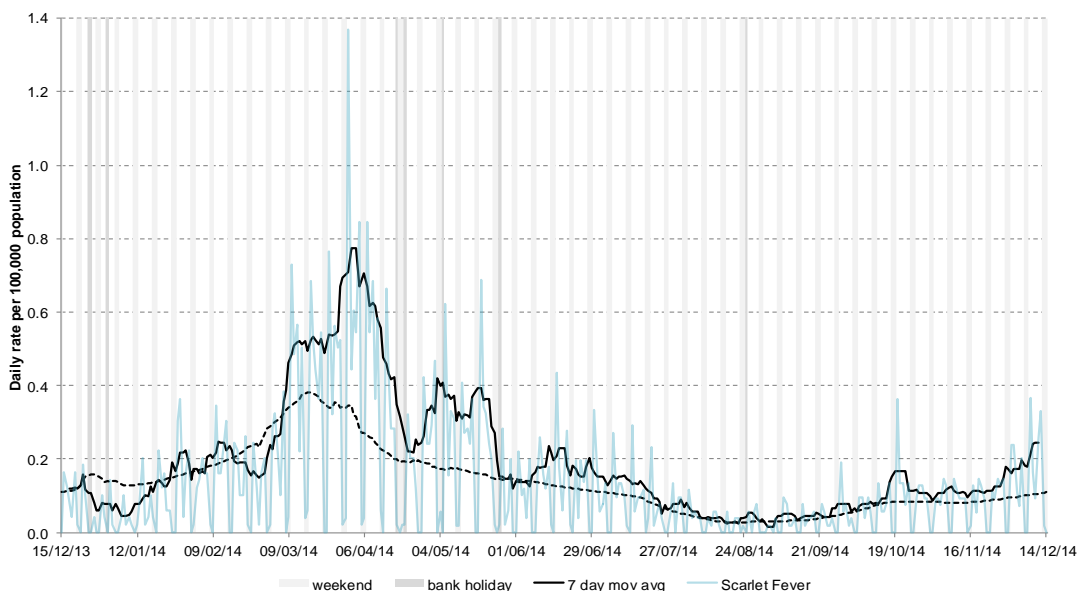
## 3: Pharyngitis or scarlet fever

Daily incidence rate (and 7-day moving average\*) per 100,000 population (all England, all ages).



## 4: Scarlet fever

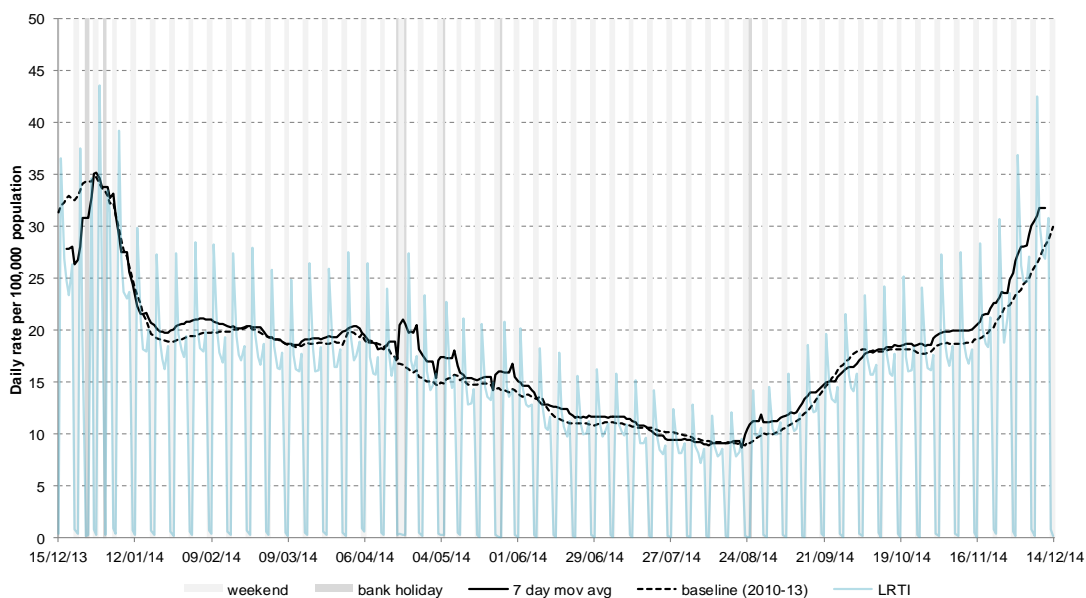
Daily incidence rate (and 7-day moving average\*) per 100,000 population (all England, all ages, based on a population denominator of approximately 5.5 million patients).



\* 7-day moving average adjusted for bank holidays.

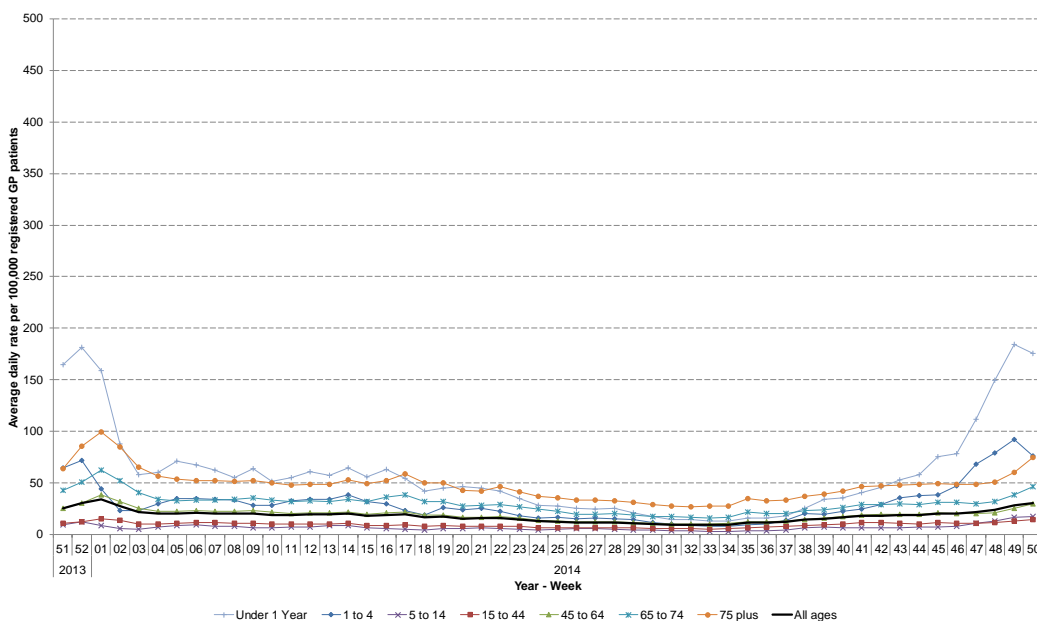
## 5: Lower respiratory tract infection (LRTI)

Daily incidence rate (and 7-day moving average\*) per 100,000 population (all England, all ages).



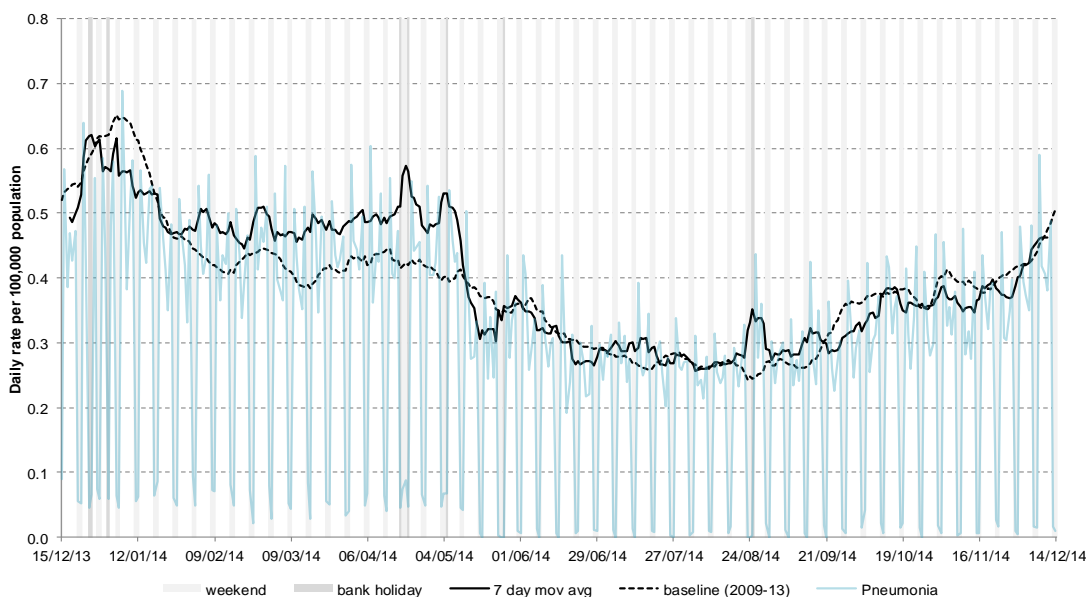
## 5a: Lower respiratory tract infection (LRTI) by age

Average daily incidence rate by week per 100,000 population (all England)



## 6: Pneumonia

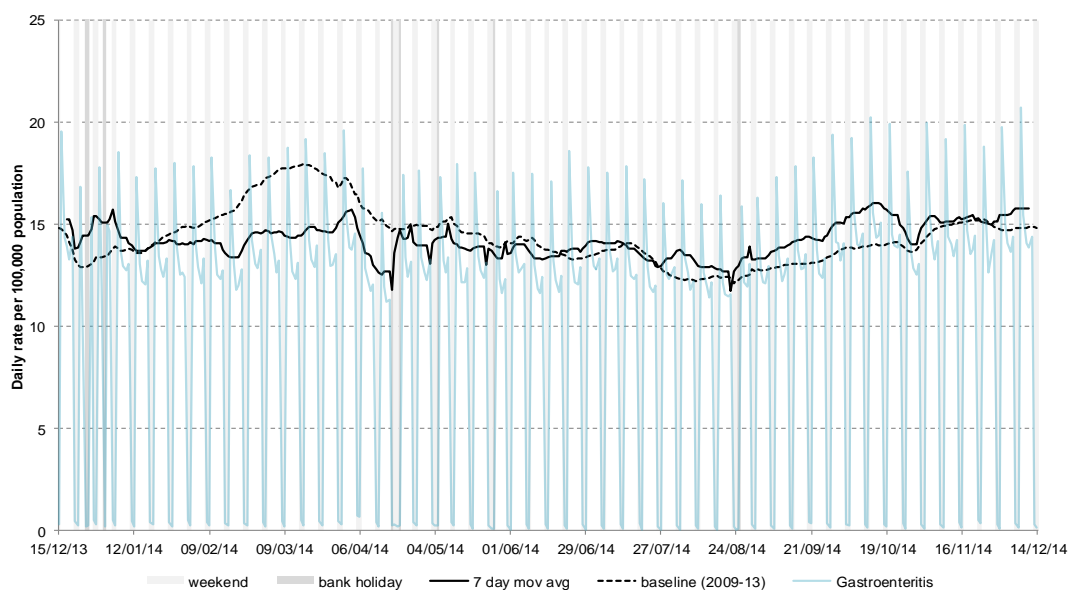
Daily incidence rate (and 7-day moving average\*) per 100,000 population (all England, all ages).



\* 7-day moving average adjusted for bank holidays.

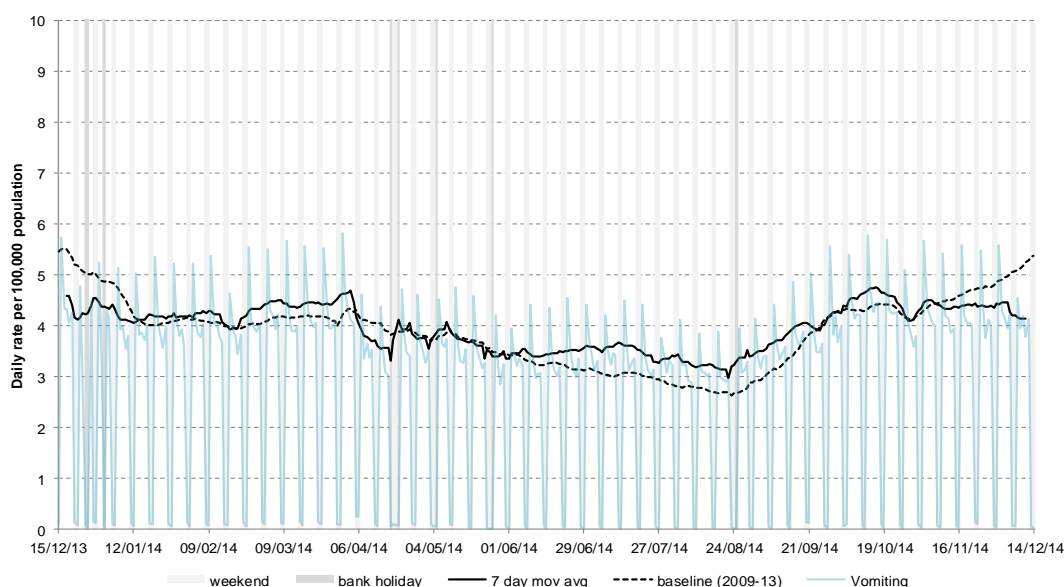
## 7: Gastroenteritis

Daily incidence rate (and 7-day moving average\*) per 100,000 population (all England, all ages).



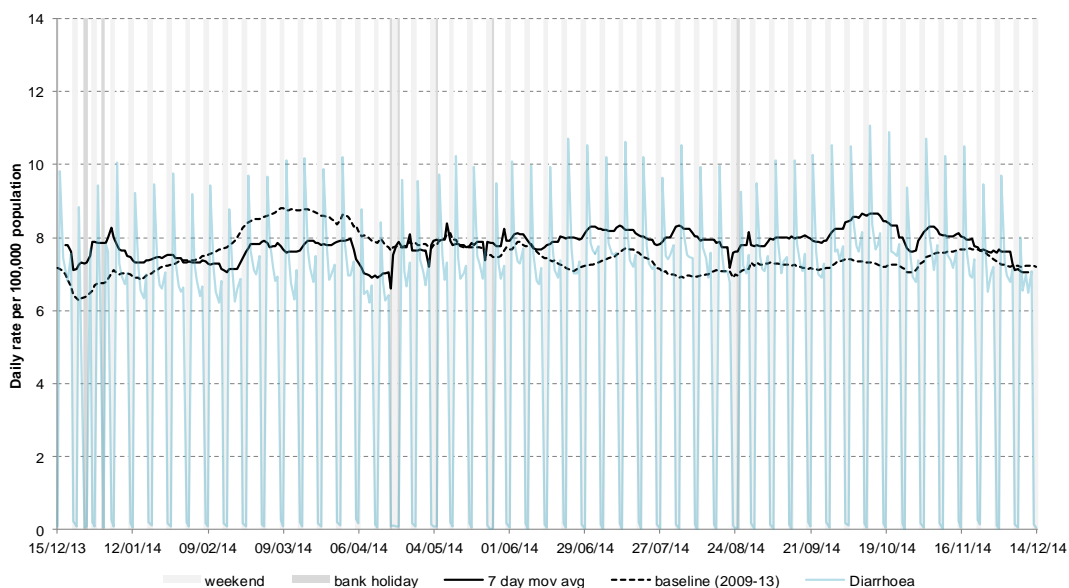
## 8: Vomiting

Daily incidence rate (and 7-day moving average\*) per 100,000 population (all England, all ages).



## 9: Diarrhoea

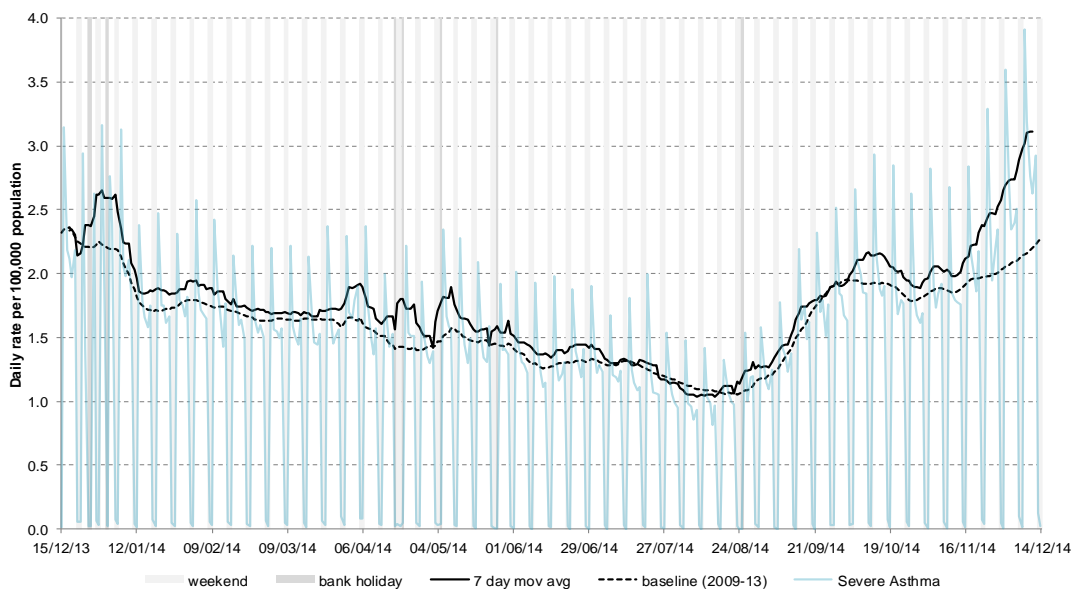
Daily incidence rate (and 7-day moving average\*) per 100,000 population (all England, all ages).



\* 7-day moving average adjusted for bank holidays.

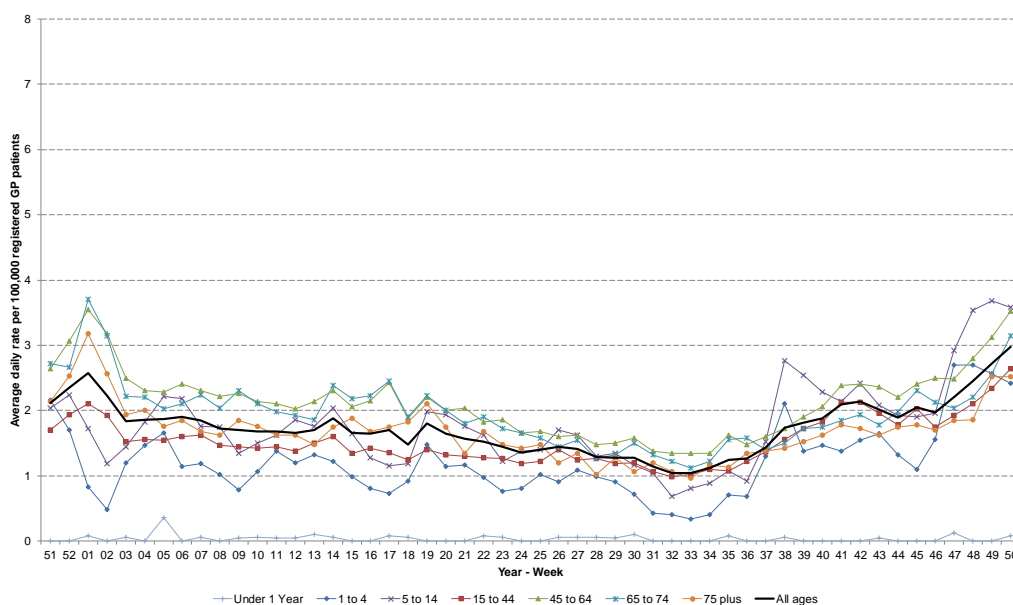
## 10: Severe asthma

Daily incidence rate (and 7-day moving average\*) per 100,000 population (all England, all ages).



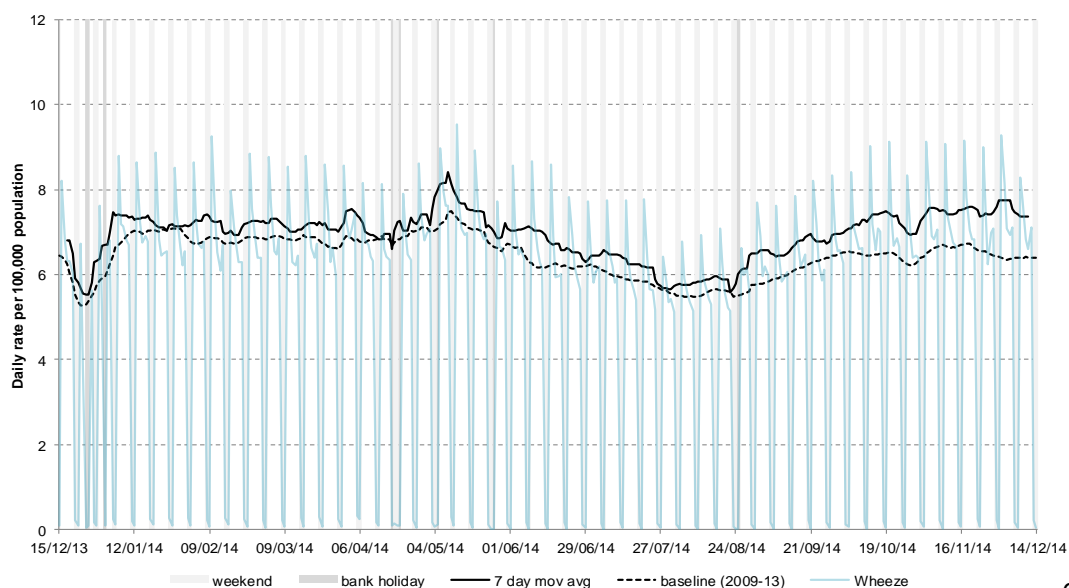
## 10a: Severe asthma by age

Average daily incidence rate by week per 100,000 population (all England)



## 11: Wheeze

Daily incidence rate (and 7-day moving average\*) per 100,000 population (all England, all ages).



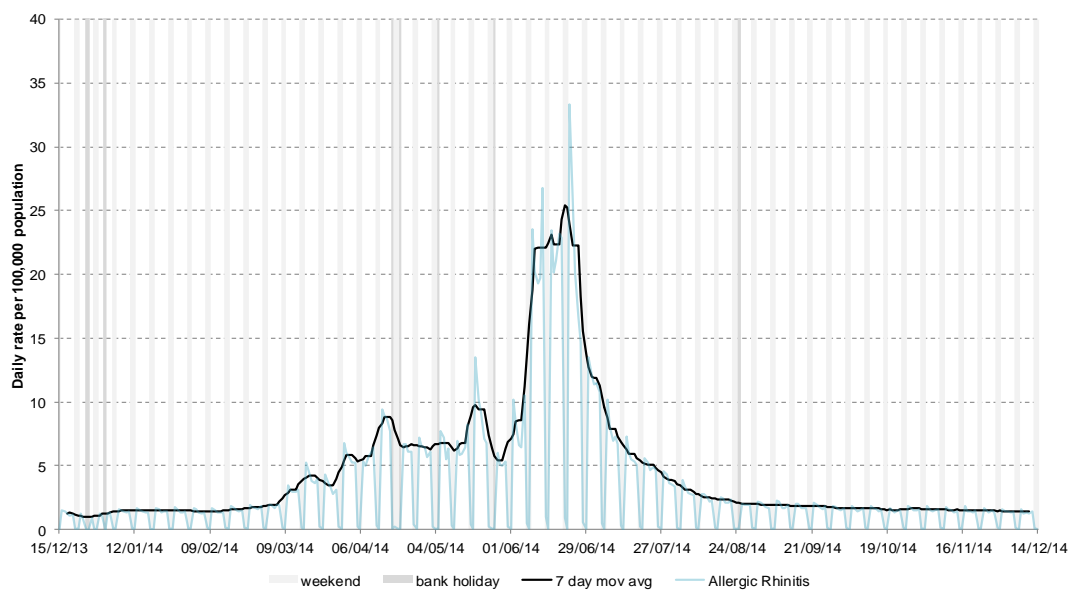
\* 7-day moving average adjusted for bank holidays.

17 December 2014

Year: 2014 Week: 50

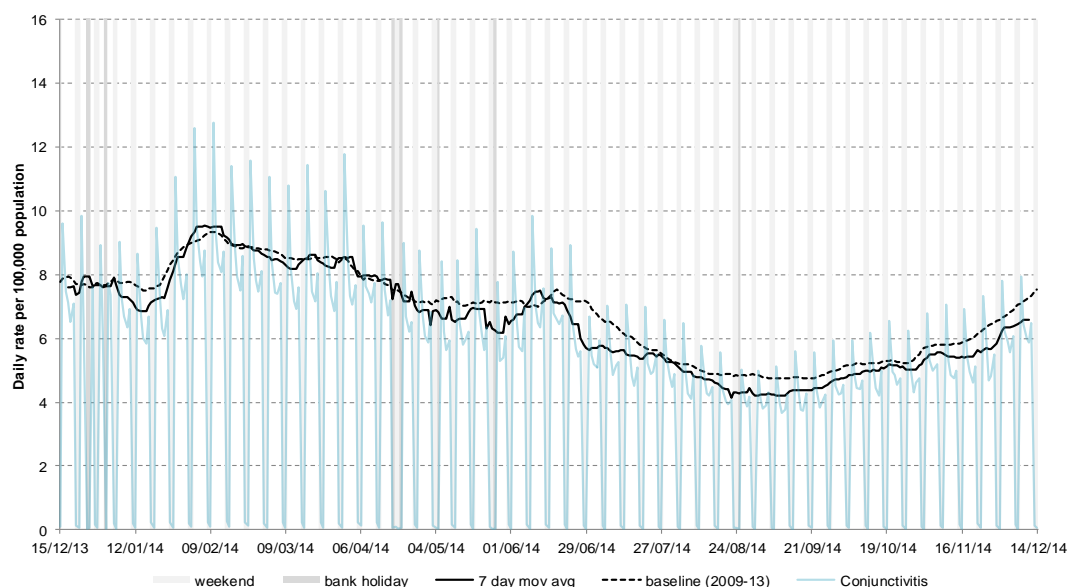
## 12: Allergic rhinitis

Daily incidence rate (and 7-day moving average\*) per 100,000 population (all England, all ages).



## 13: Conjunctivitis

Daily incidence rate (and 7-day moving average\*) per 100,000 population (all England, all ages).



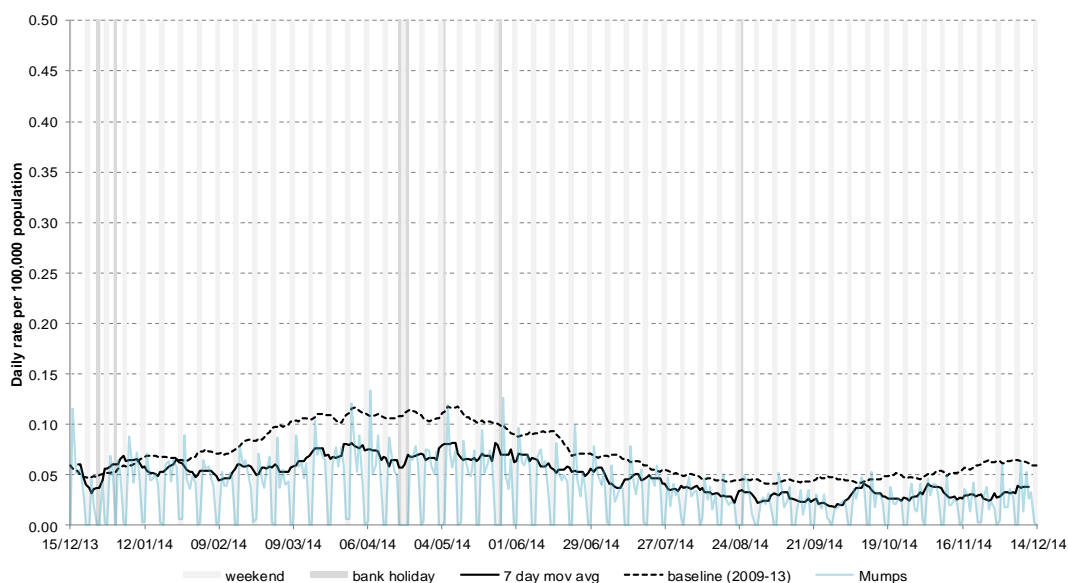
## 14: Intentionally left blank

Intentionally left blank.

\* 7-day moving average adjusted for bank holidays.

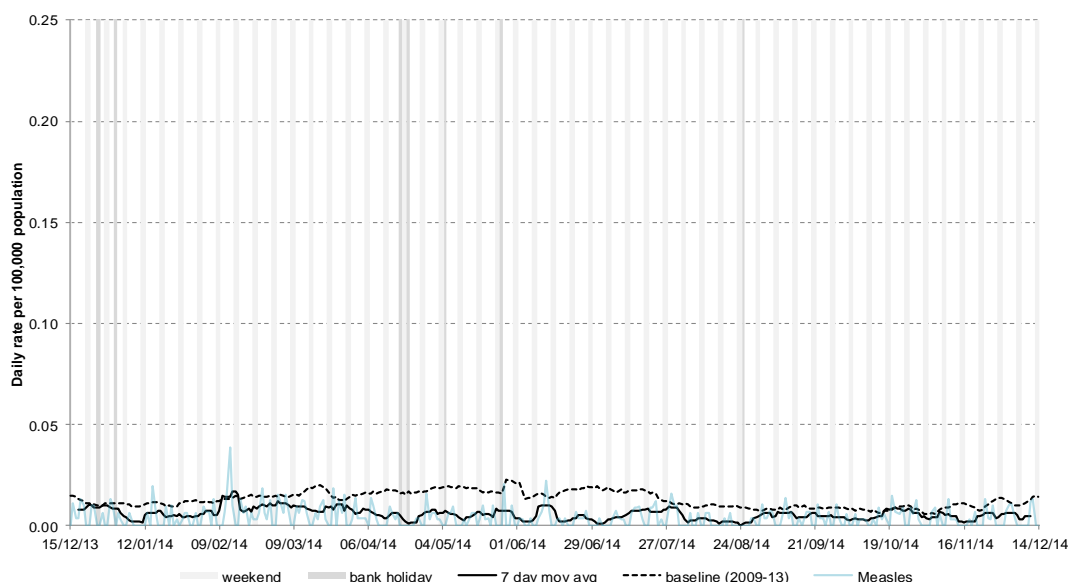
## 15: Mumps

Daily incidence rate (and 7-day moving average\*) per 100,000 population (all England, all ages).



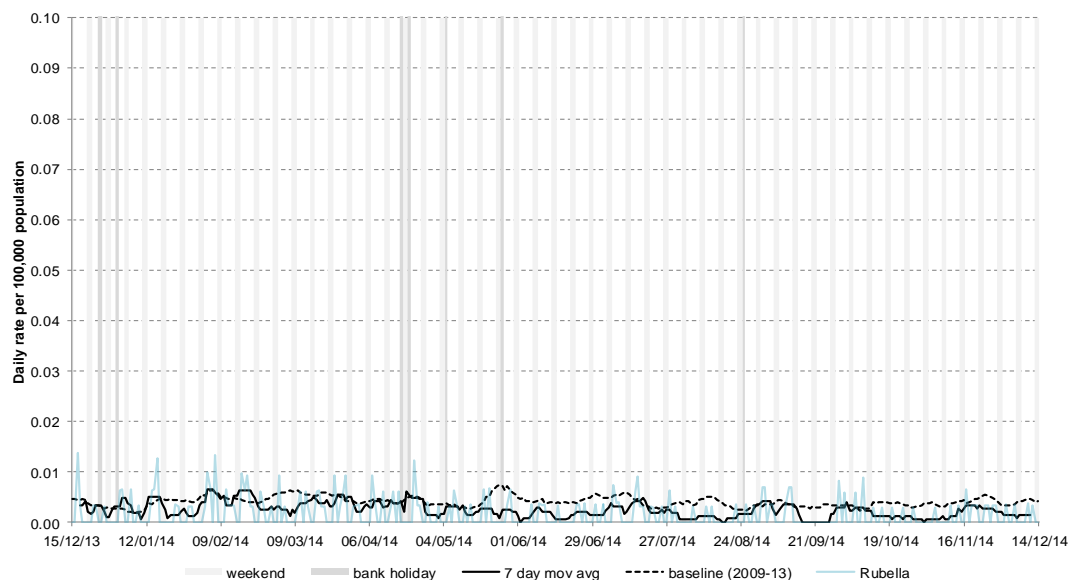
## 16: Measles

Daily incidence rate (and 7-day moving average\*) per 100,000 population (all England, all ages).



## 17: Rubella

Daily incidence rate (and 7-day moving average\*) per 100,000 population (all England, all ages).

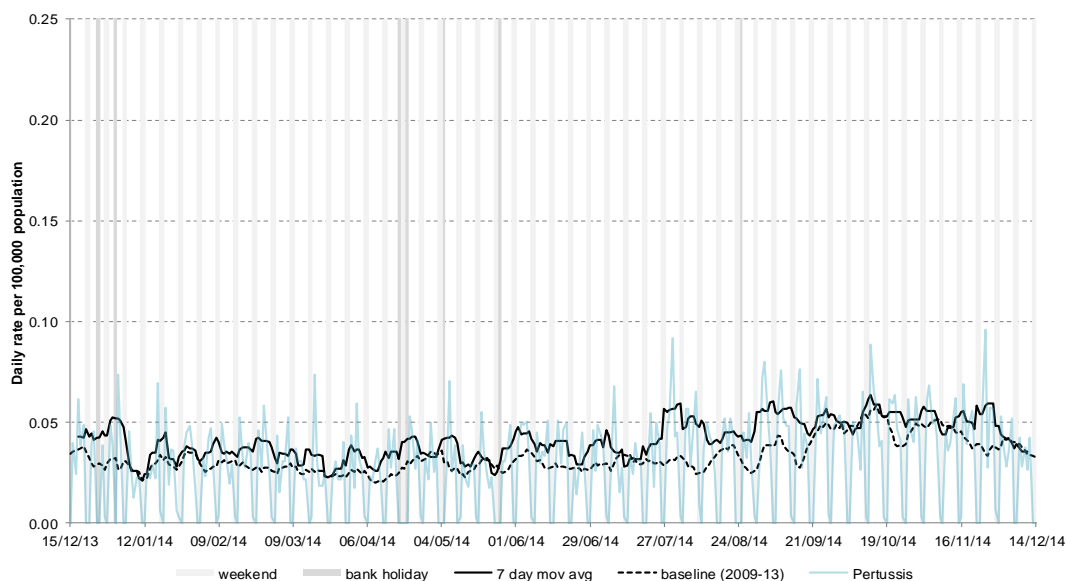


\* 7-day moving average adjusted for bank holidays.



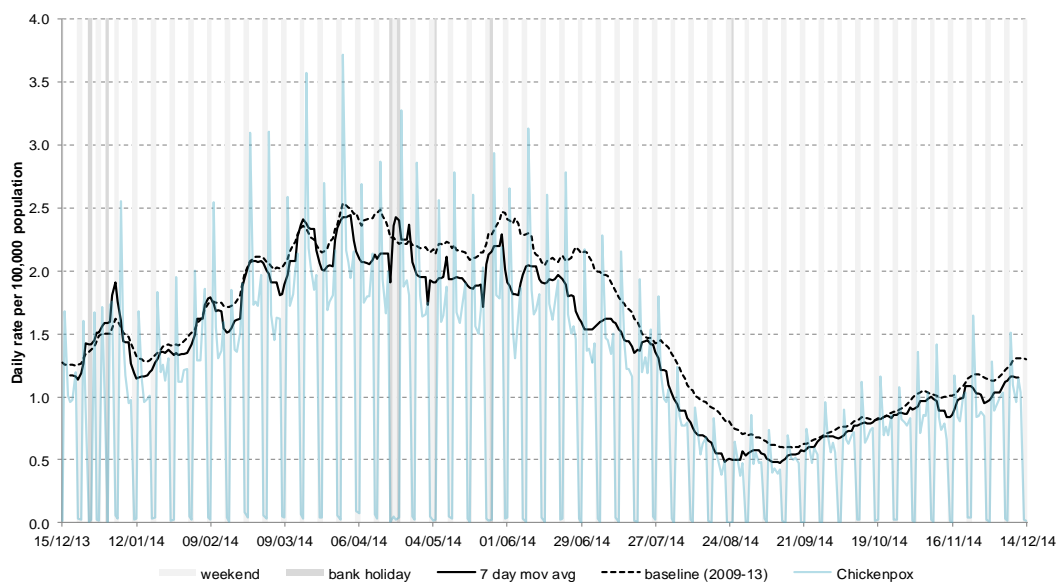
## 18: Pertussis

Daily incidence rate (and 7-day moving average\*) per 100,000 population (all England, all ages).



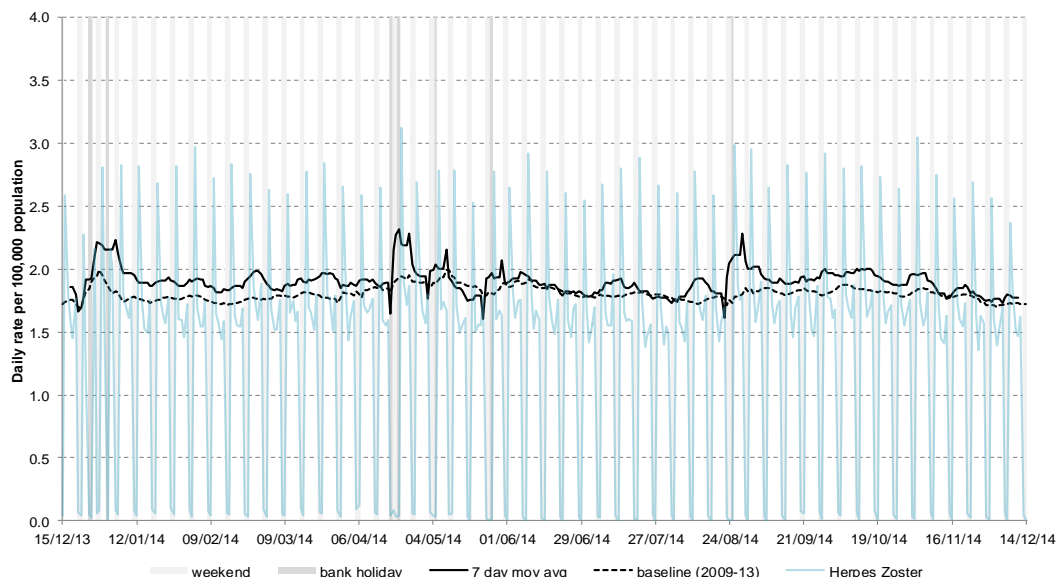
## 19: Chickenpox

Daily incidence rate (and 7-day moving average\*) per 100,000 population (all England, all ages).



## 20: Herpes zoster

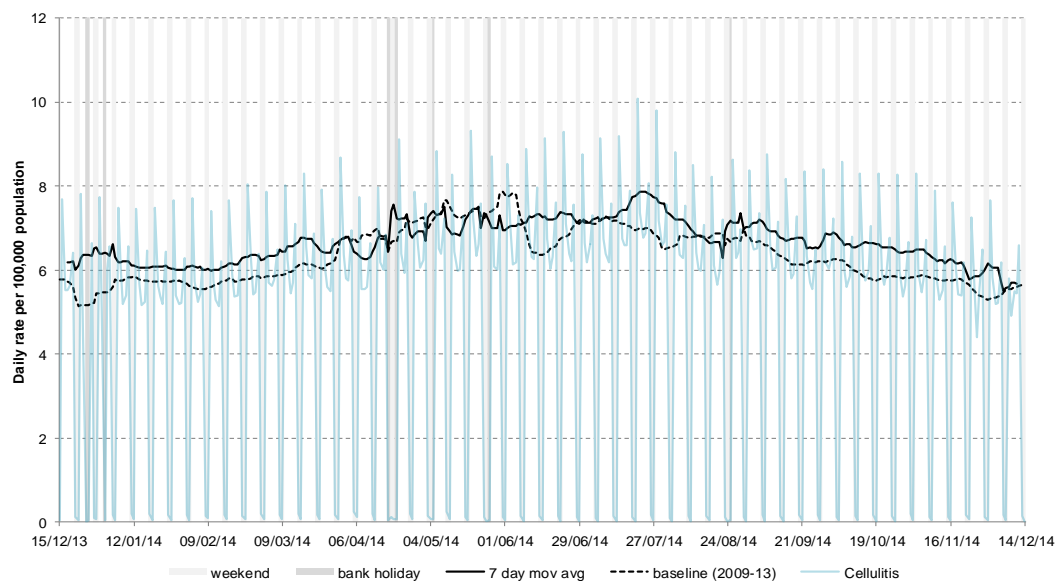
Daily incidence rate (and 7-day moving average\*) per 100,000 population (all England, all ages).



\* 7-day moving average adjusted for bank holidays.

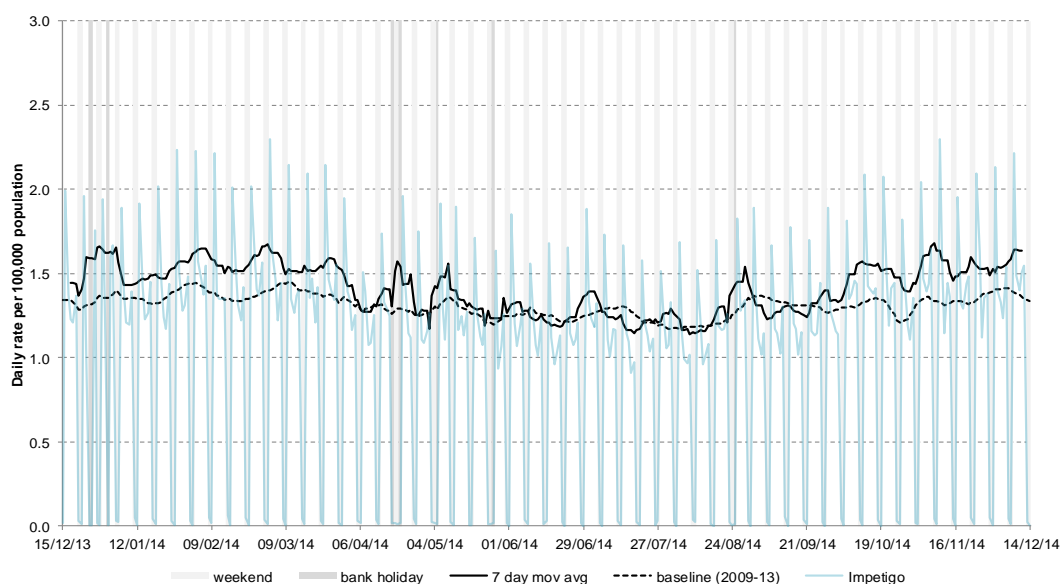
## 21: Cellulitis

Daily incidence rate (and 7-day moving average\*) per 100,000 population (all England, all ages).



## 22: Impetigo

Daily incidence rate (and 7-day moving average\*) per 100,000 population (all England, all ages).



## 23: Intentionally left blank

Intentionally left blank.

\* 7-day moving average adjusted for bank holidays.

## Notes and further information

- The Public Health England GP in hours surveillance system is a syndromic surveillance system monitoring community-based morbidity recorded by GP practices.
  - This system captures anonymised GP morbidity data from two GP clinical software systems, EMIS, from version 1 of the QSurveillance® database, and TPP SystmOne.
  - Historic baselines are smoothed to remove bank holiday effects. Data from 2009 has been excluded for selected indicators which were affected by the H1N1 influenza pandemic. No baseline is currently included for allergic rhinitis.
  - The appendix illustrates weekly GP in hours consultation data for influenza-like illness (ILI). Each PHE Centre is represented by a thematic map showing its constituent local authorities (LA) coloured according to the weekly consultation rate of ILI per 100,000 population. LAs where less than 5 cases of ILI have been reported are suppressed and illustrated as no data.
  - The maps on the following pages contains Ordnance Survey data © Crown copyright and database right 2014. Contains National Statistics data © Crown copyright and database right 2014.
- 

## Acknowledgements:

We thank and acknowledge the University of Nottingham, ClinRisk® and the contribution of EMIS and EMIS practices. Data source: version 1 of the QSurveillance® database.

We thank TPP, ResearchOne and the SystmOne GP practices contributing to this surveillance system.

---

---

### GP In Hours Syndromic Surveillance System Bulletin.

**Produced by:** PHE Real-time Syndromic Surveillance Team  
6<sup>th</sup> Floor, 5 St Philip's Place, Birmingham, B3 2PW

**Tel:** 0344 225 3560 > Option 4 > Option 2      **Fax:** 0121 236 2215

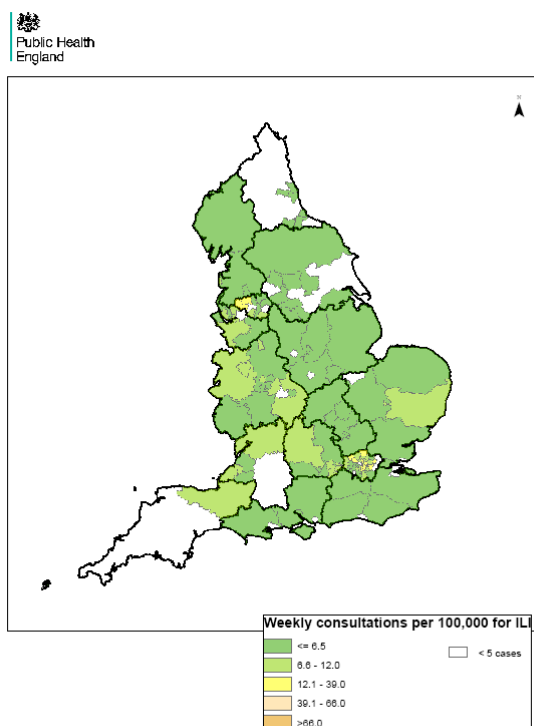
**Web:** <https://www.gov.uk/government/collections/syndromic-surveillance-systems-and-analyses>

**Contact ReSST:**  
syndromic-surveillance  
@phe.gov.uk

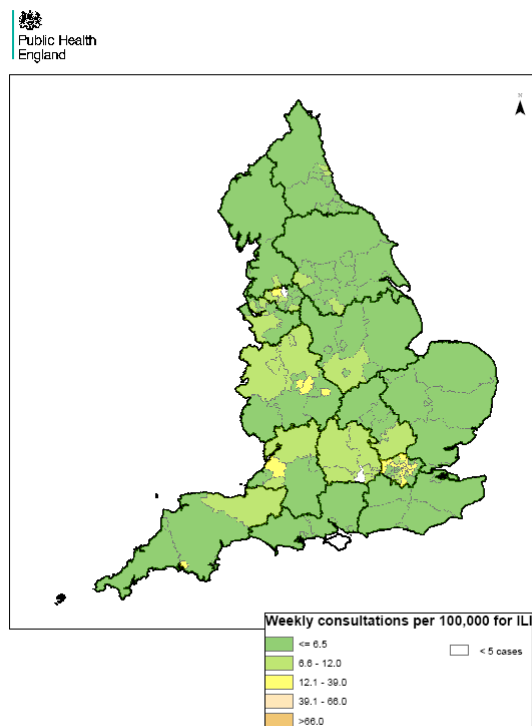
## England

Weekly ILI  
consultation  
rate by LA  
for England

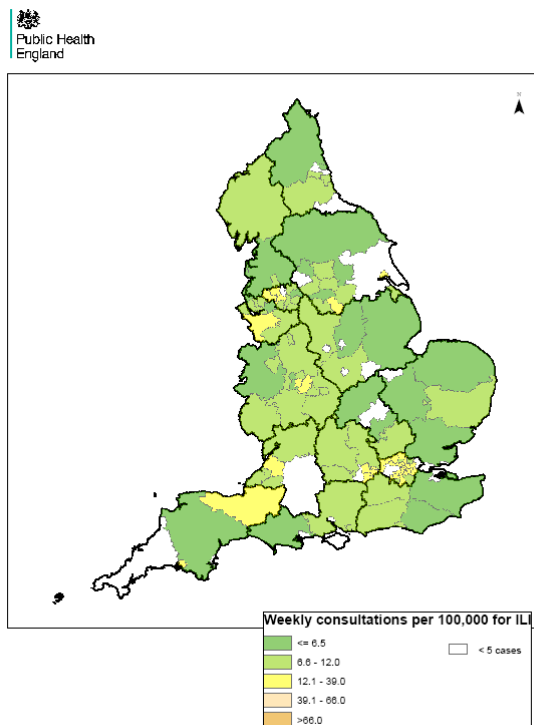
### Week 47



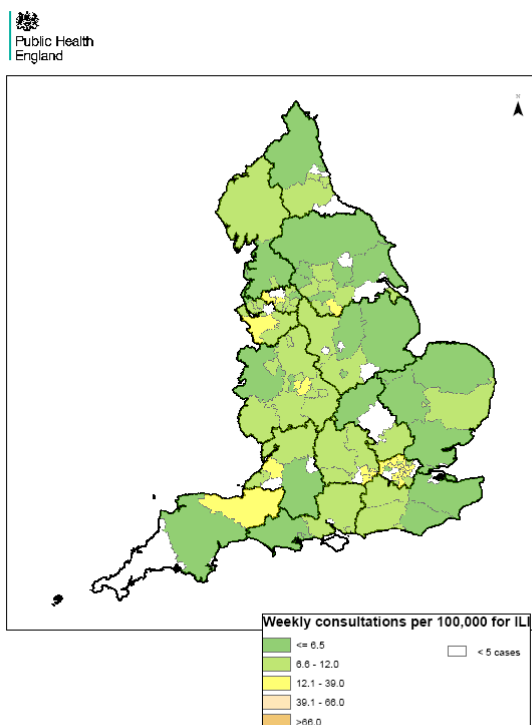
### Week 48



### Week 49



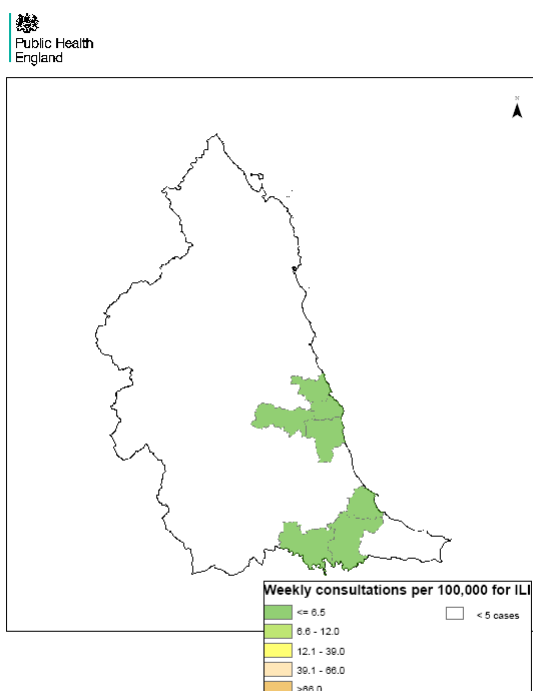
### Week 50



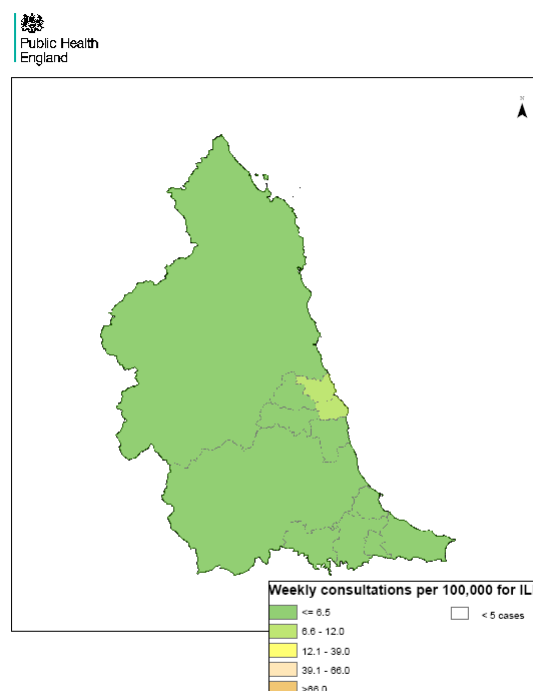
## North East

Weekly ILI  
consultation  
rate by LA  
for North  
East PHE  
Centre

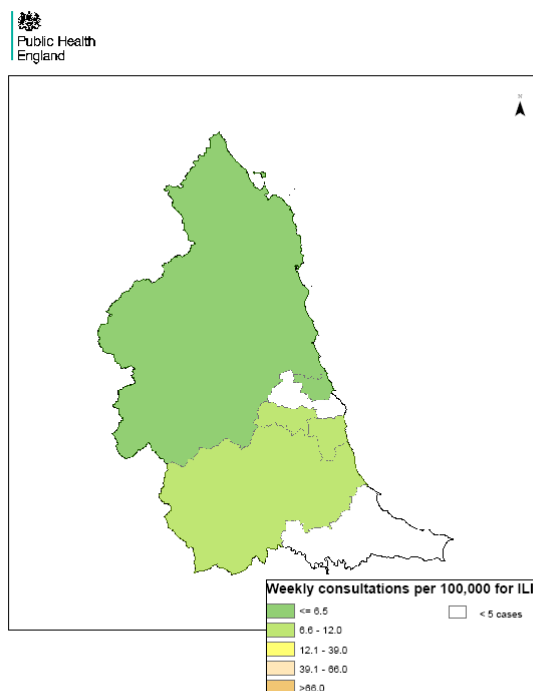
### Week 47



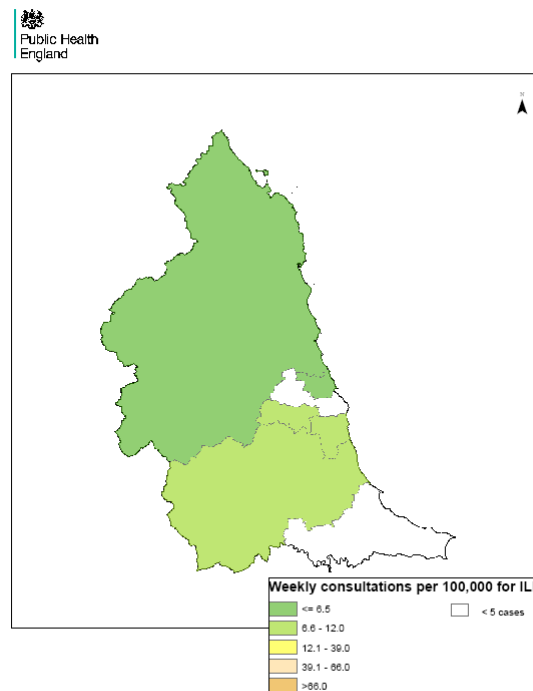
### Week 48



### Week 49



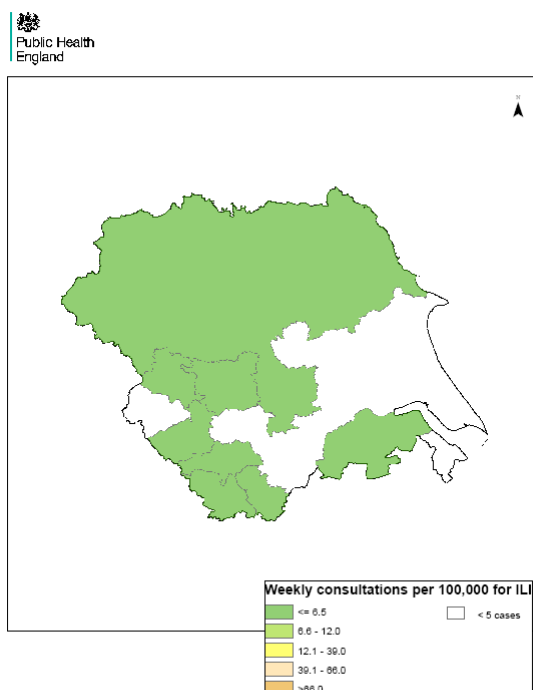
### Week 50



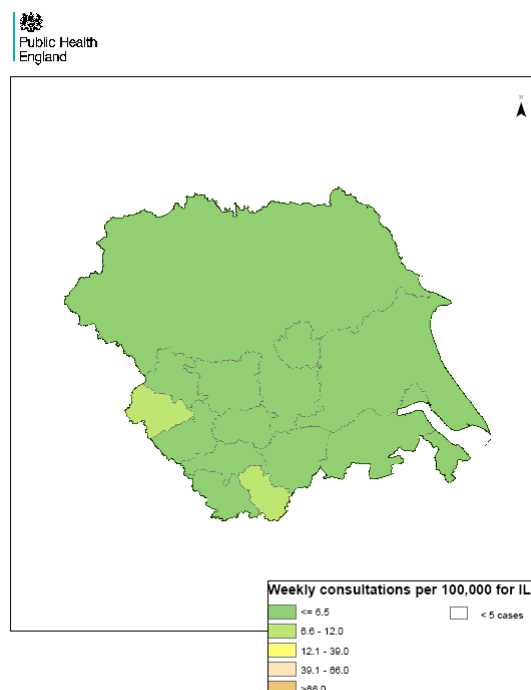
## Yorkshire & Humber

Weekly ILI consultation rate by LA for Yorkshire & Humber PHE Centre

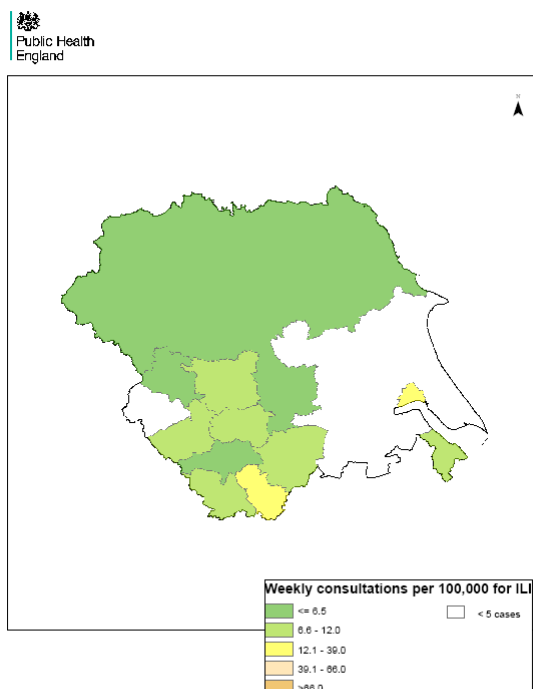
### Week 47



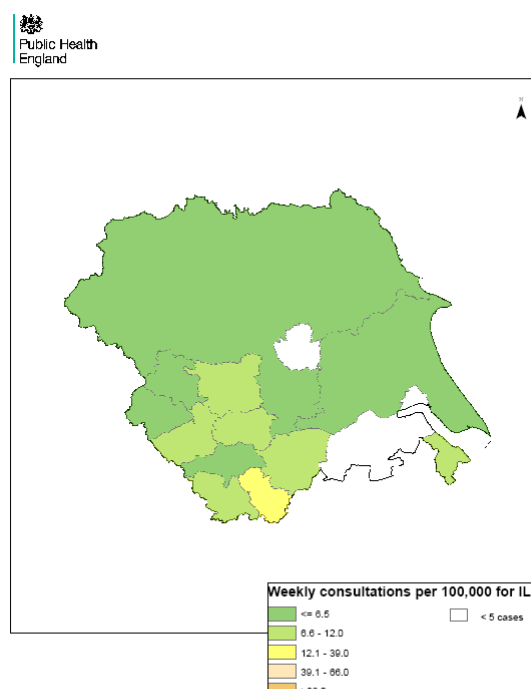
### Week 48



### Week 49



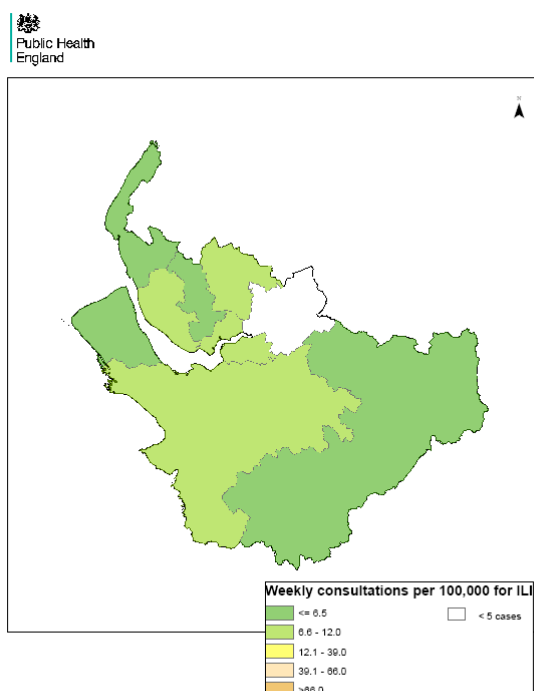
### Week 50



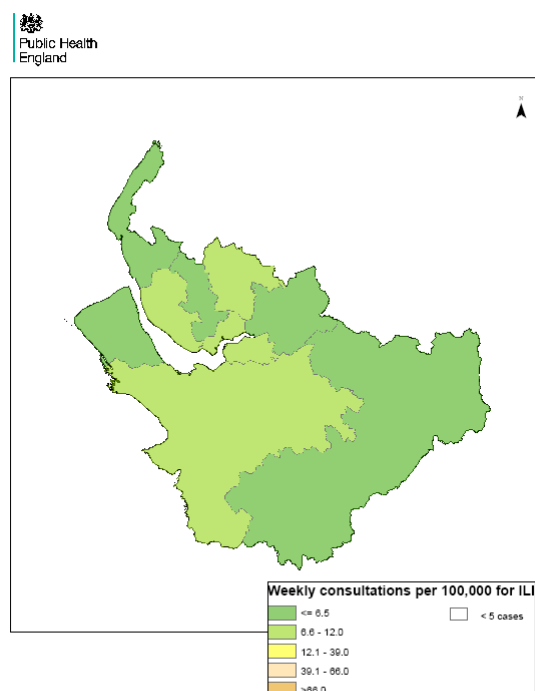
## Cheshire & Merseyside

Weekly ILI consultation rate by LA for Cheshire & Merseyside PHE Centre

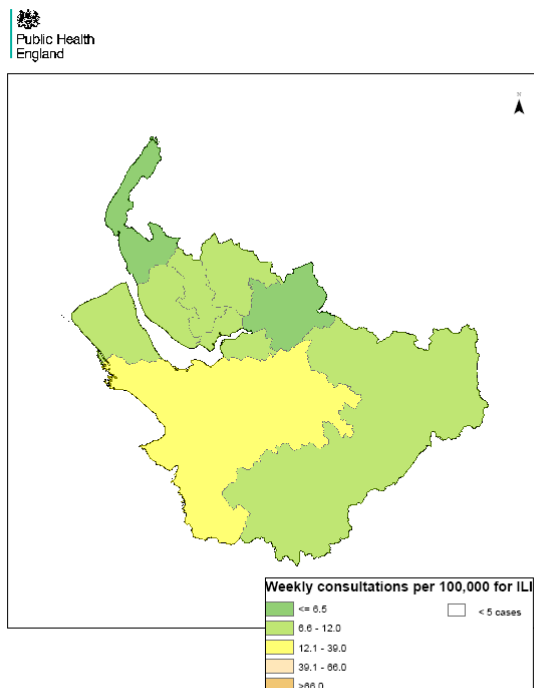
Week 47



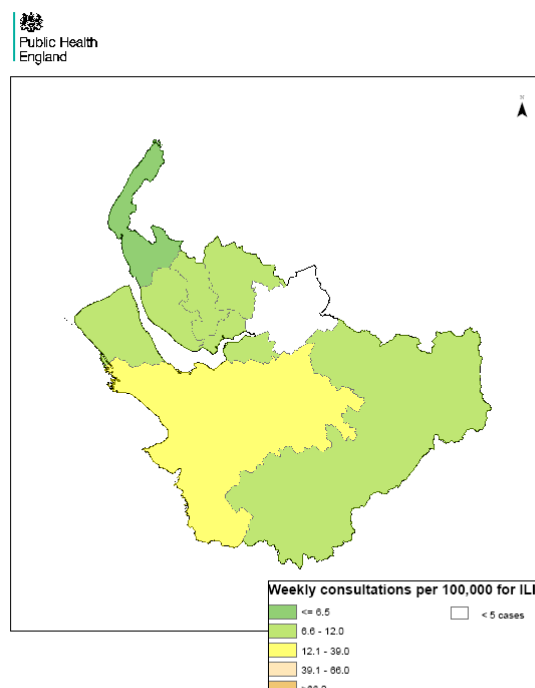
Week 48



Week 49



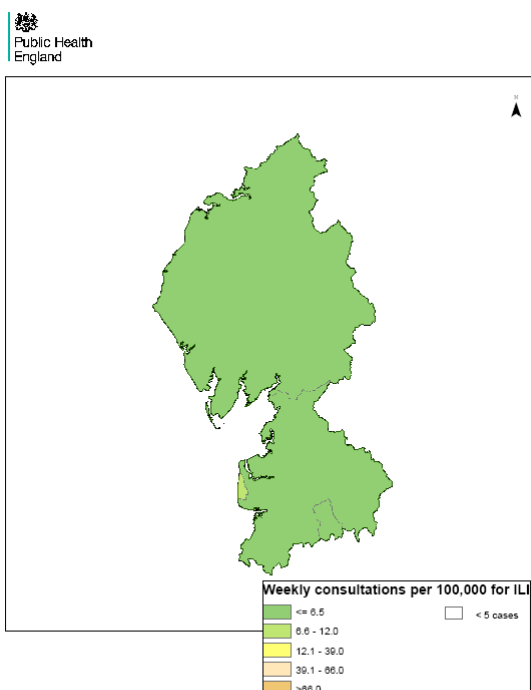
Week 50



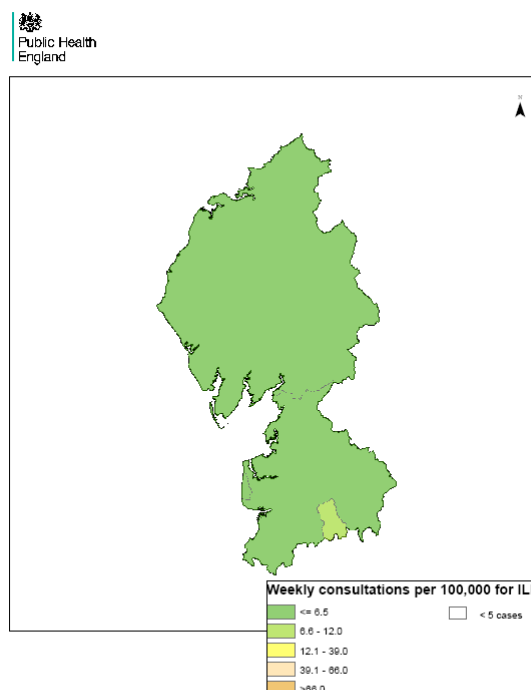
## Cumbria & Lancashire

Weekly ILI consultation rate by LA for Cumbria & Lancashire PHE Centre

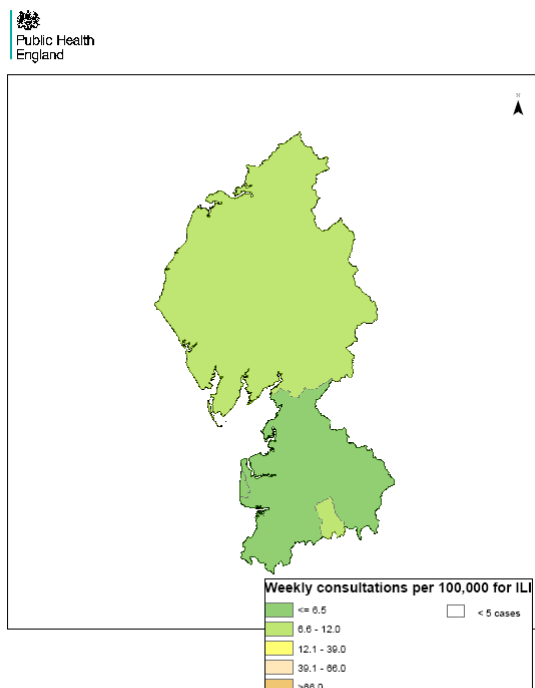
Week 47



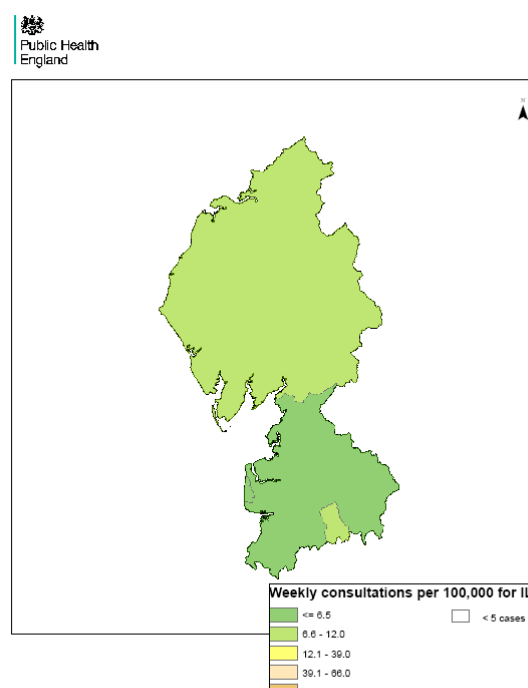
Week 48



Week 49



Week 50

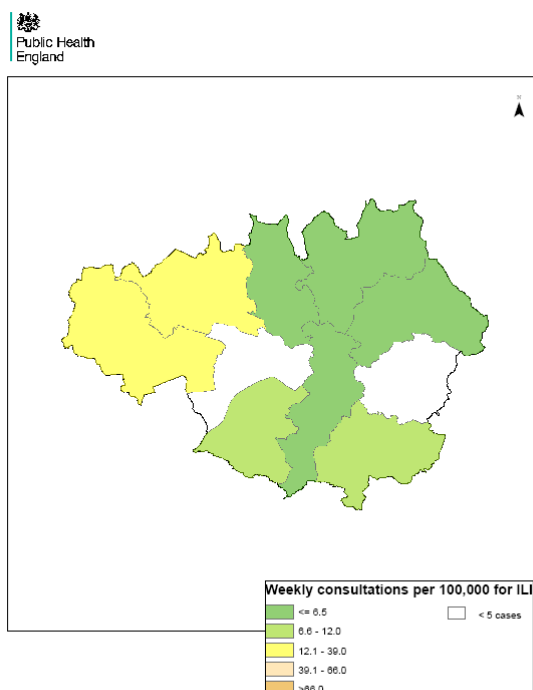




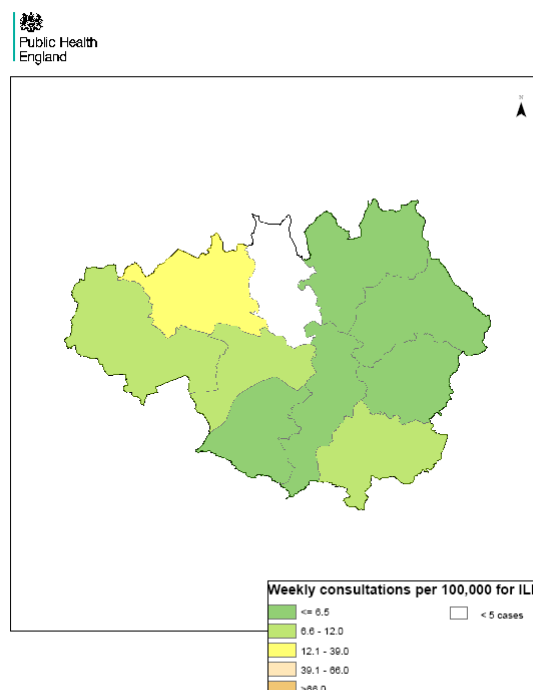
## 5: Greater Manchester

Weekly ILI consultation rate by LA for Greater Manchester PHE Centre

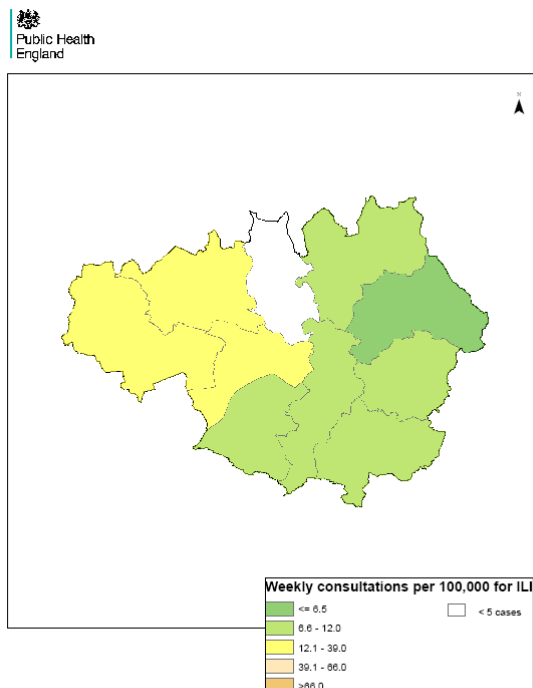
Week 47



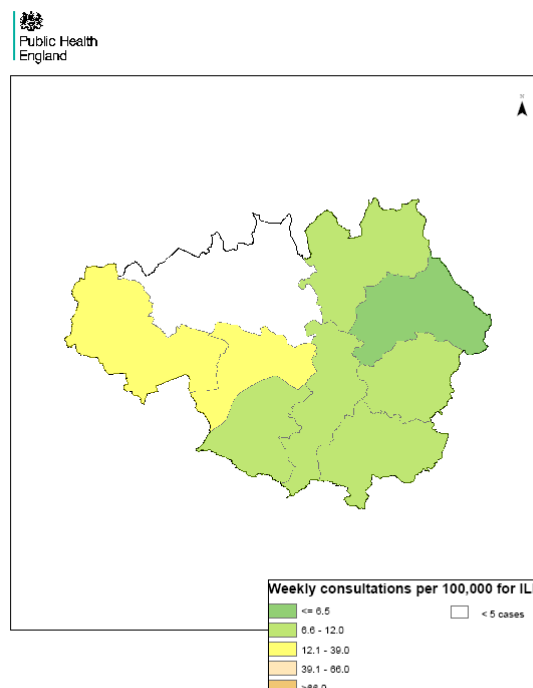
Week 48



Week 49



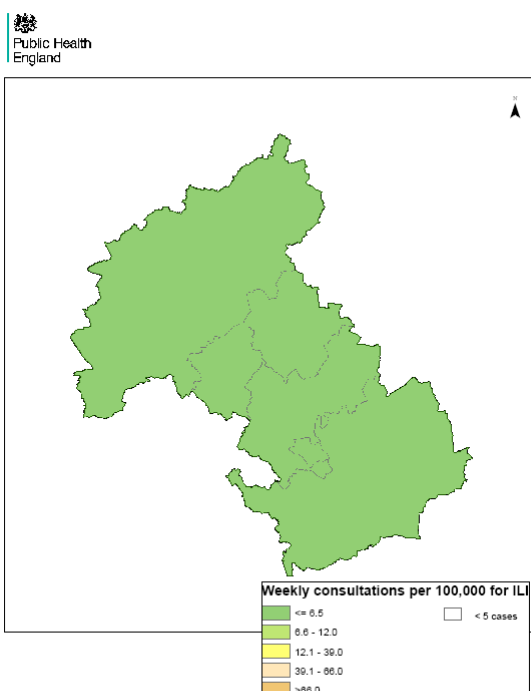
Week 50



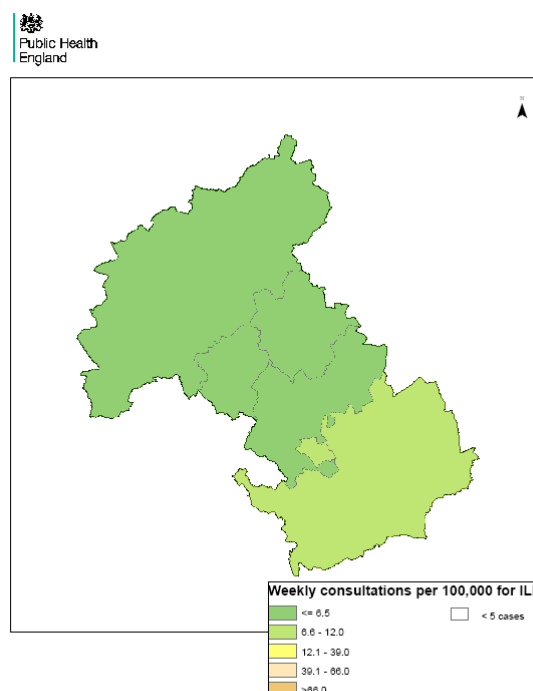
**South  
Midlands &  
Hertfordshire**

Weekly ILI  
consultation  
rate by LA  
for South  
Midlands &  
Hertfordshire  
PHE Centre

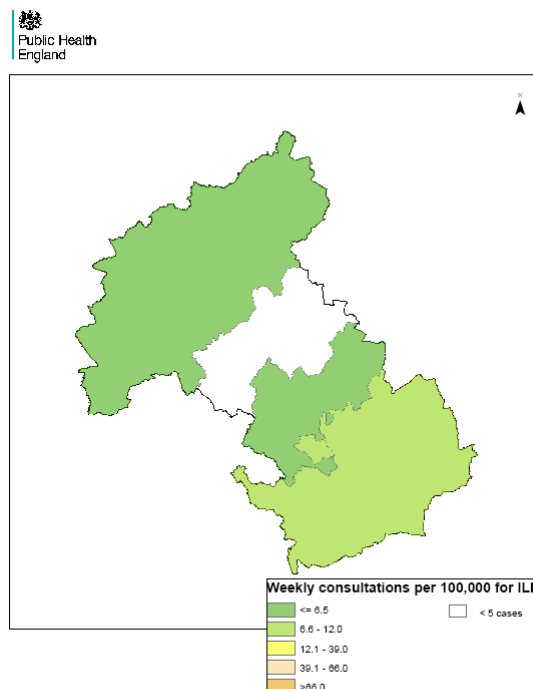
**Week 47**



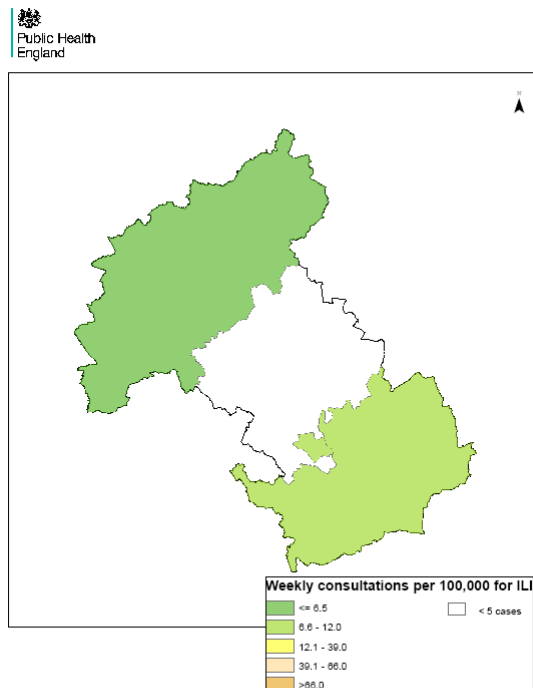
**Week 48**



**Week 49**



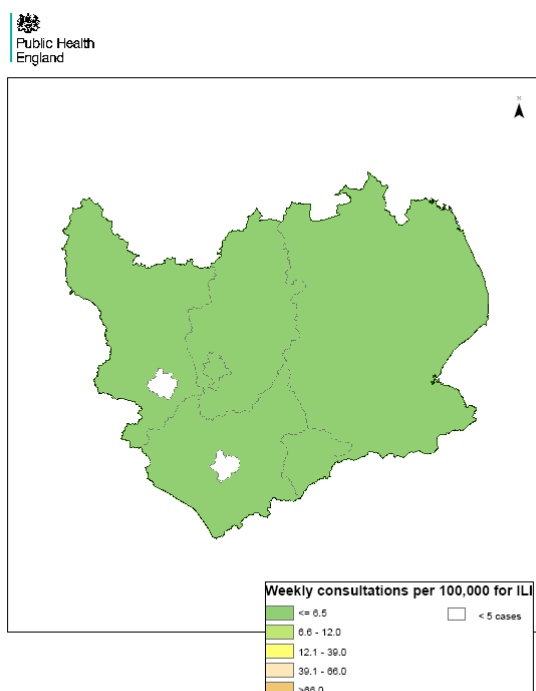
**Week 50**



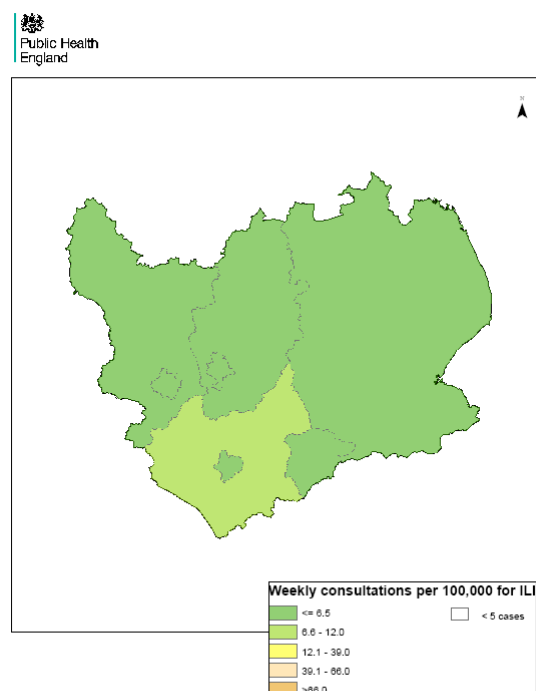
**East  
Midlands**

Weekly ILI  
consultation  
rate by LA  
for East  
Midlands  
PHE Centre

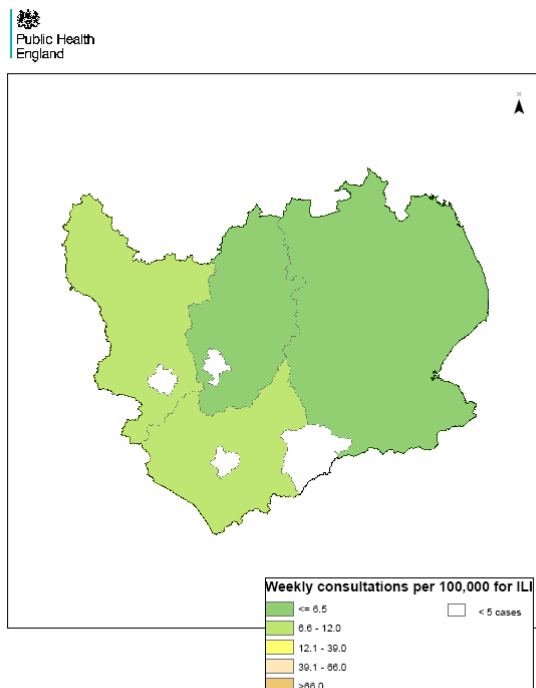
**Week 47**



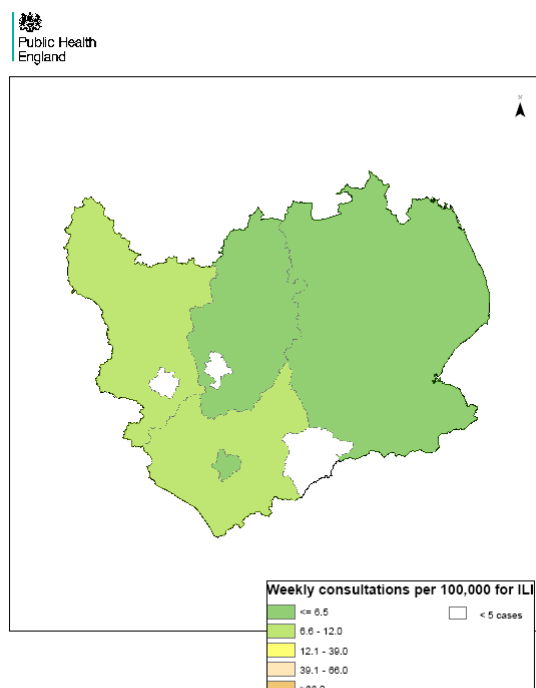
**Week 48**



**Week 49**



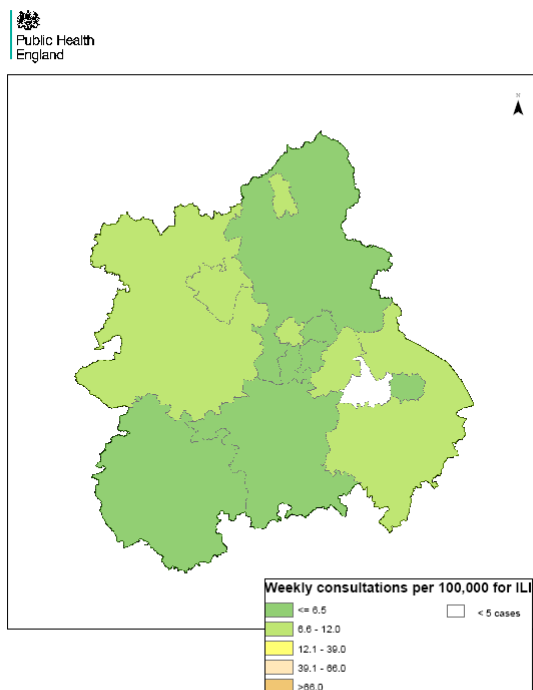
**Week 50**



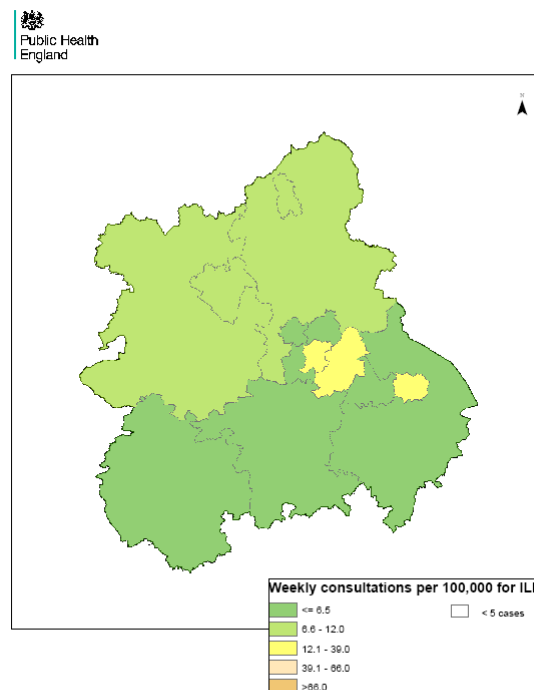
**West Midlands**

Weekly ILI consultation rate by LA for West Midlands PHE Centre

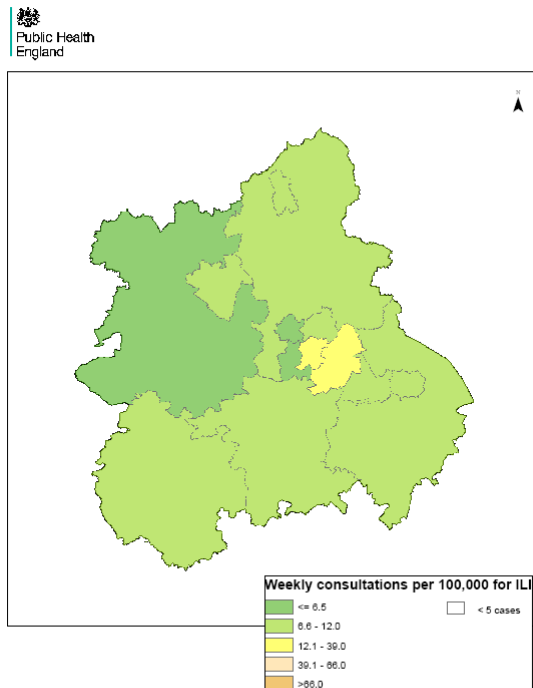
**Week 47**



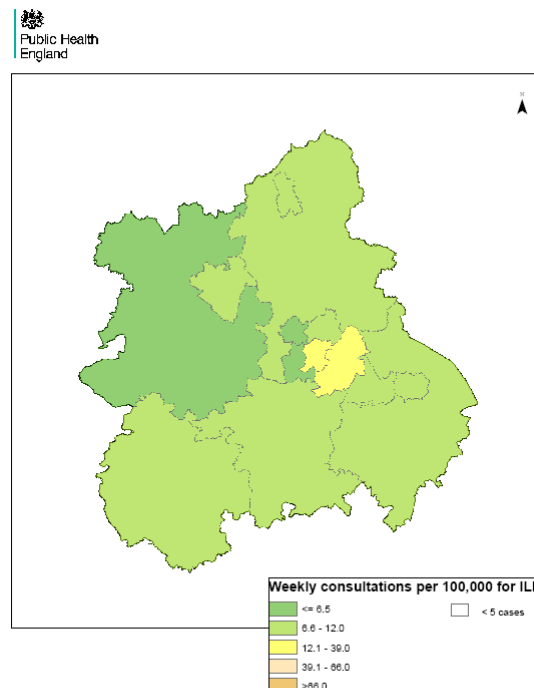
**Week 48**



**Week 49**



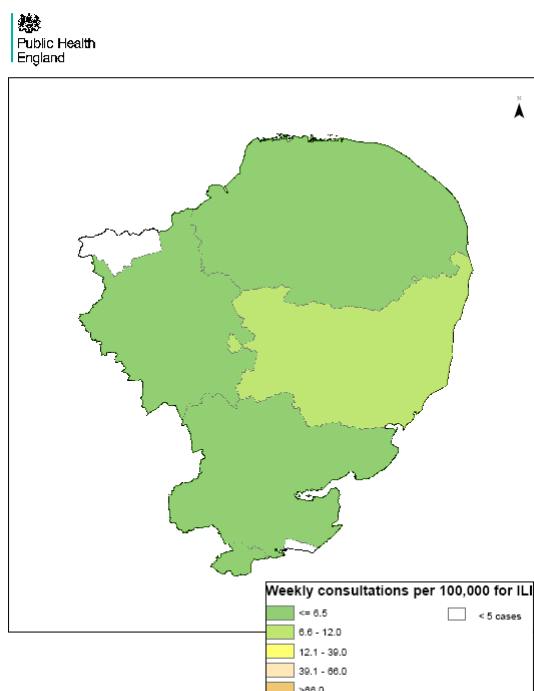
**Week 50**



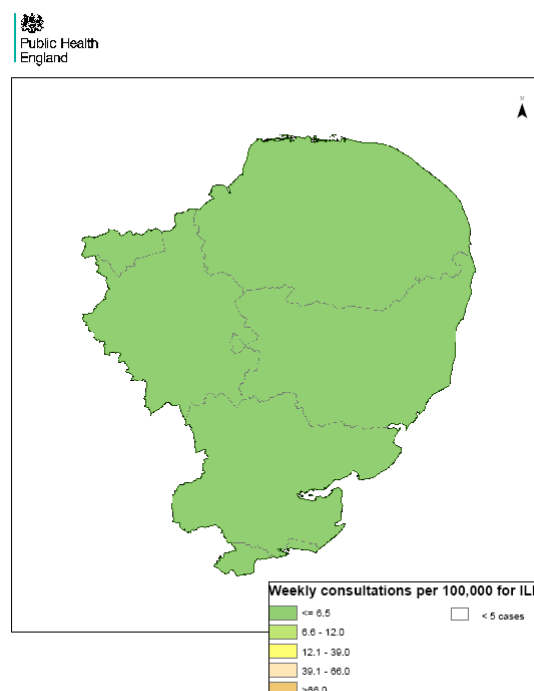
## Anglia & Essex

Weekly ILI consultation rate by LA for Anglia & Essex PHE Centre

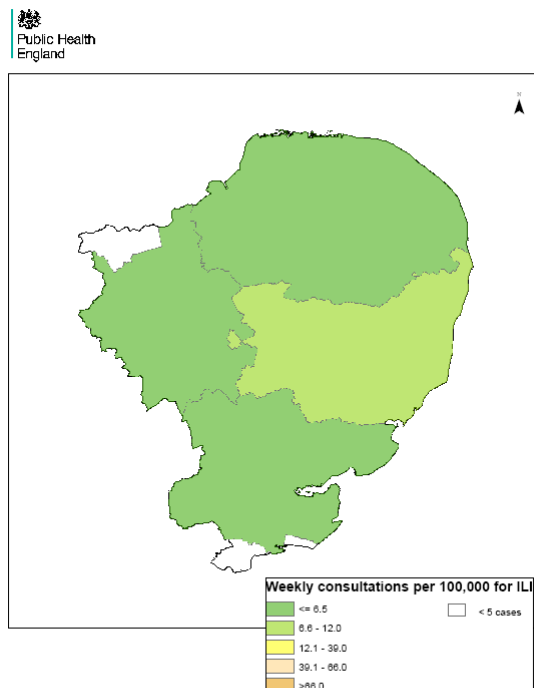
**Week 47**



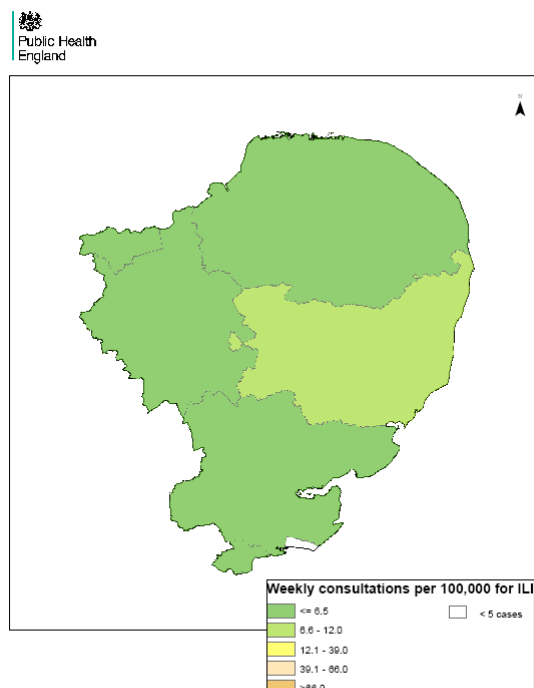
**Week 48**



**Week 49**



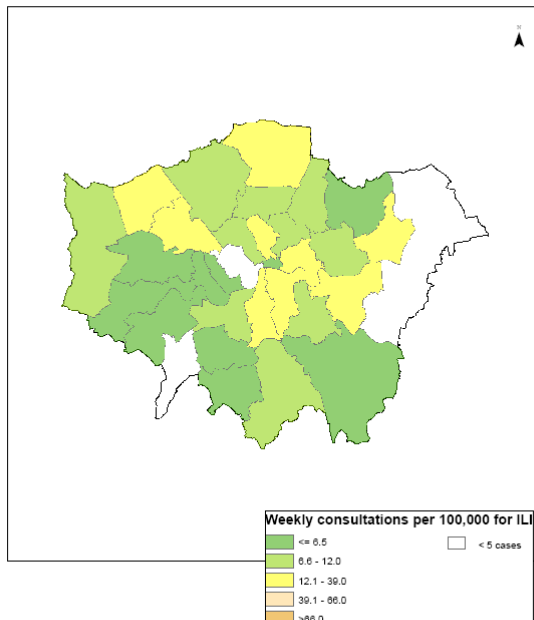
**Week 50**



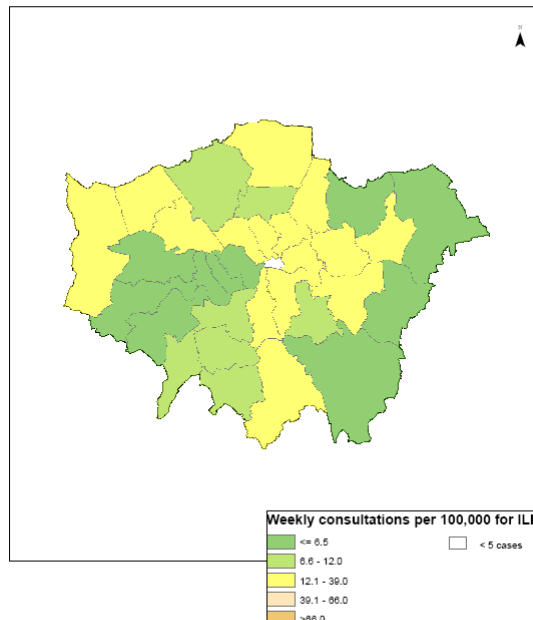
## London

Weekly ILI  
consultation  
rate by LA  
for London  
PHE Centre

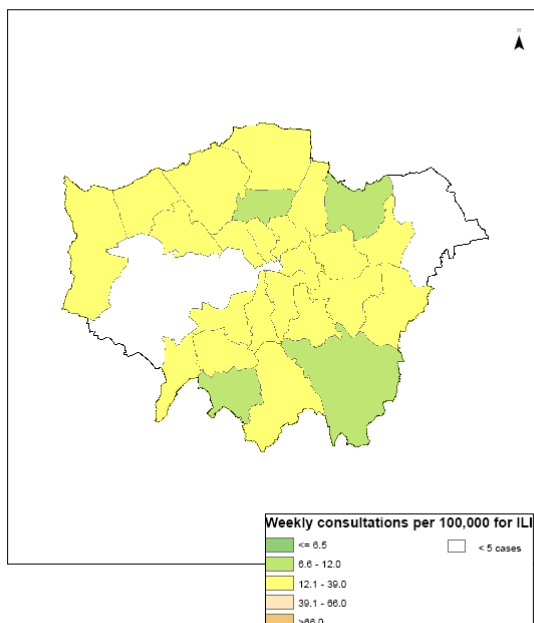
### Week 47



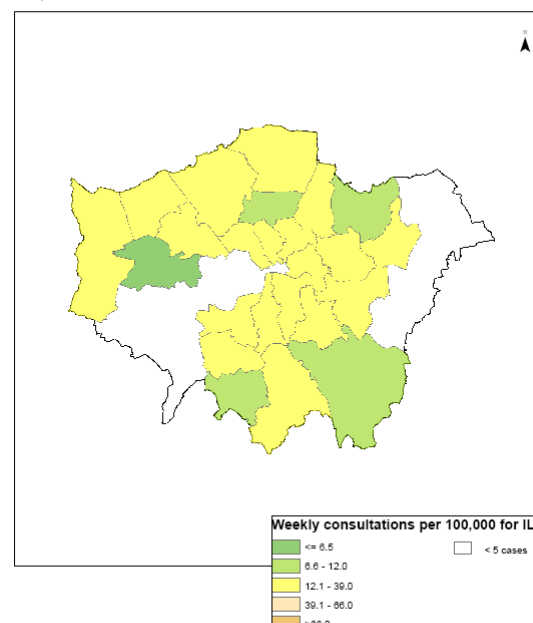
### Week 48



### Week 49



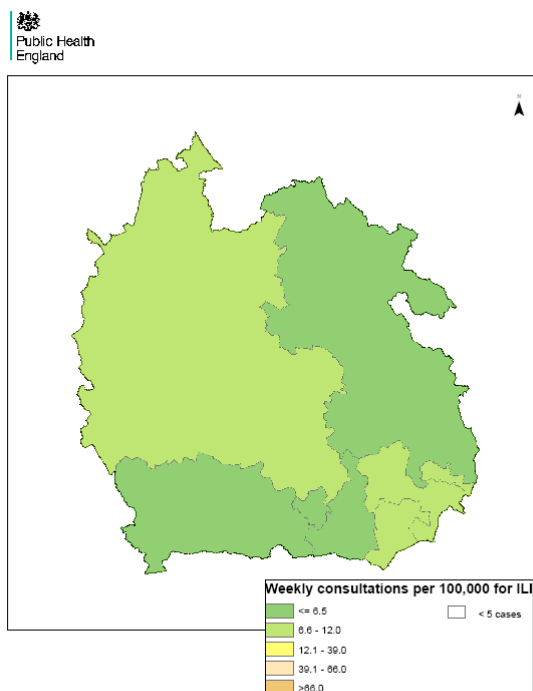
### Week 50



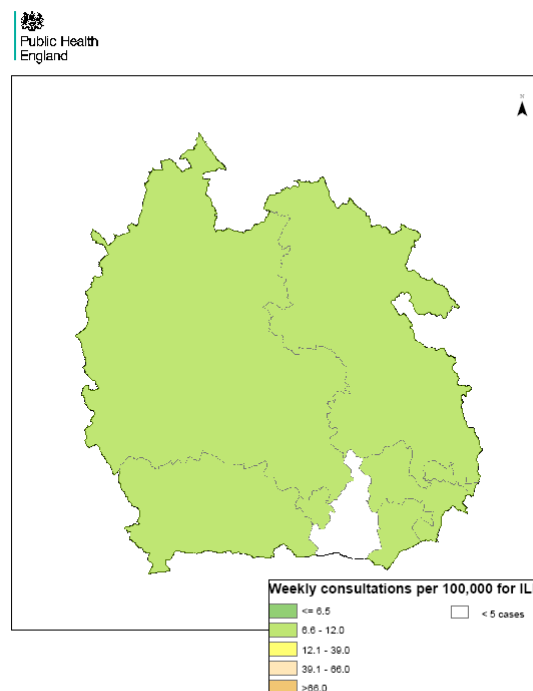
## Thames Valley

Weekly ILI  
consultation  
rate by LA  
for Thames  
Valley PHE  
Centre

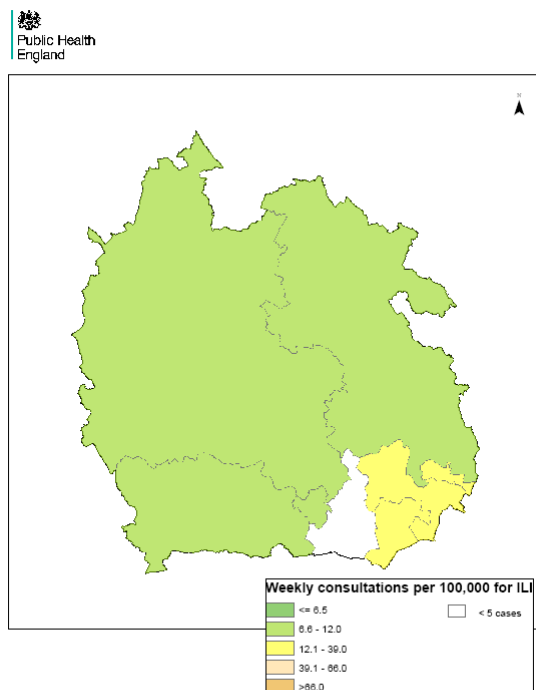
Week 47



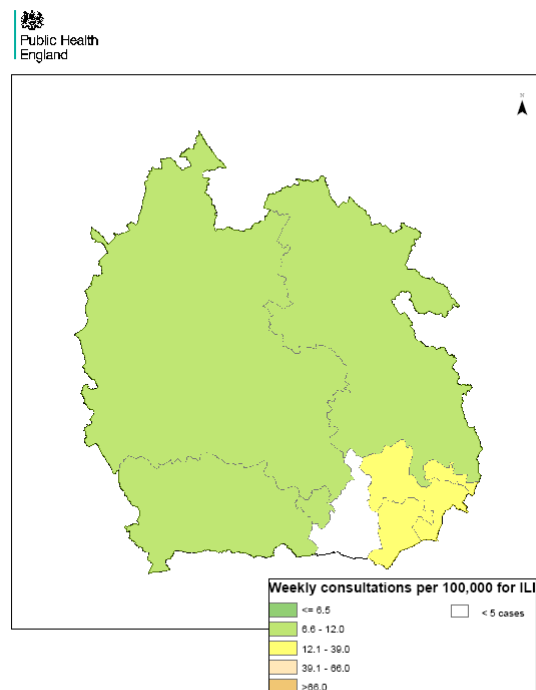
Week 48



Week 49



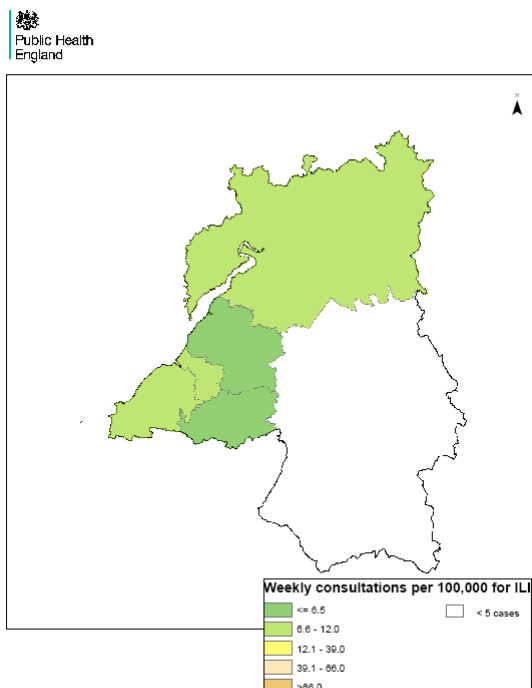
Week 50



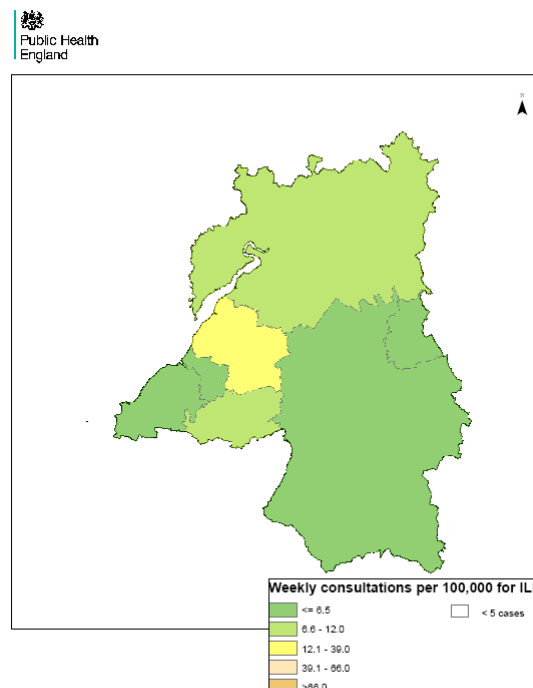
## Avon, Gloucestershire & Wiltshire

Weekly ILI  
consultation  
rate by LA  
for Avon,  
Gloucestershire  
& Wiltshire  
PHE Centre

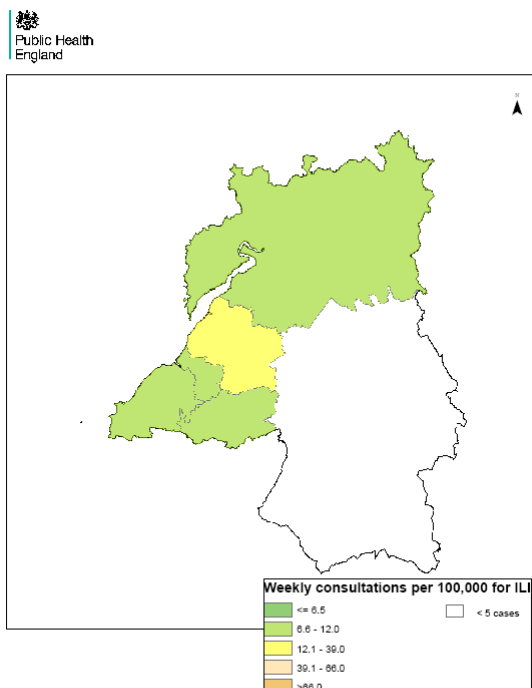
Week 47



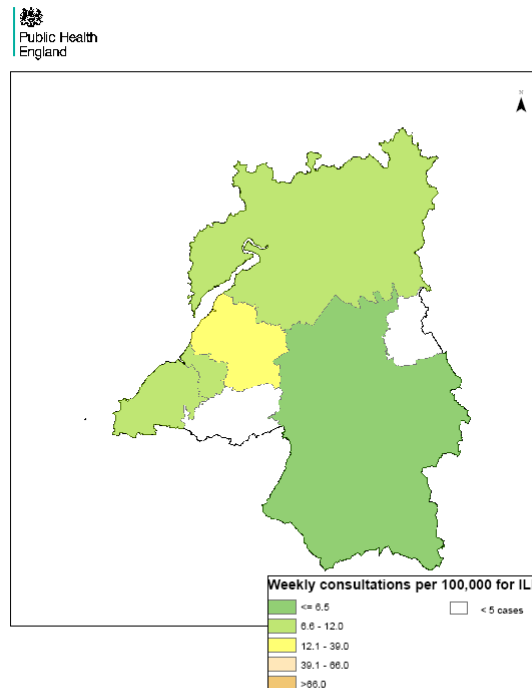
Week 48



Week 49



Week 50

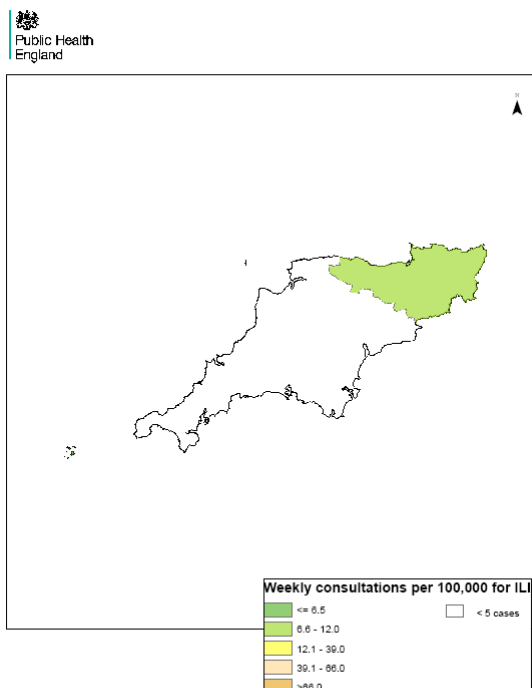




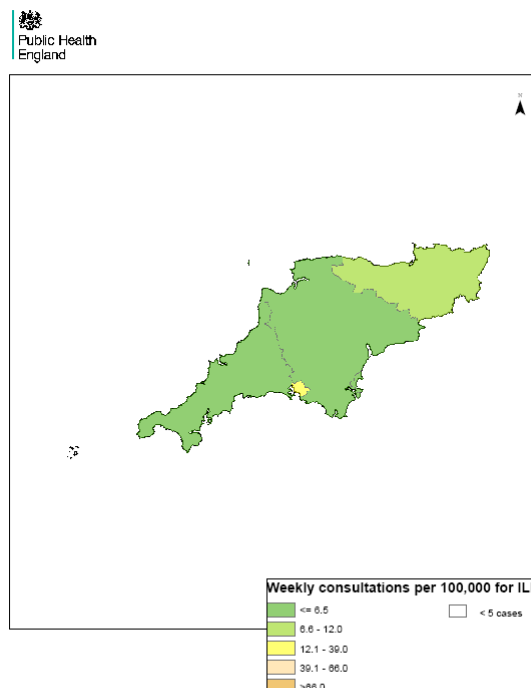
**Devon,  
Cornwall &  
Somerset**

Weekly ILI  
consultation  
rate by LA  
for Devon,  
Cornwall &  
Somerset  
PHE Centre

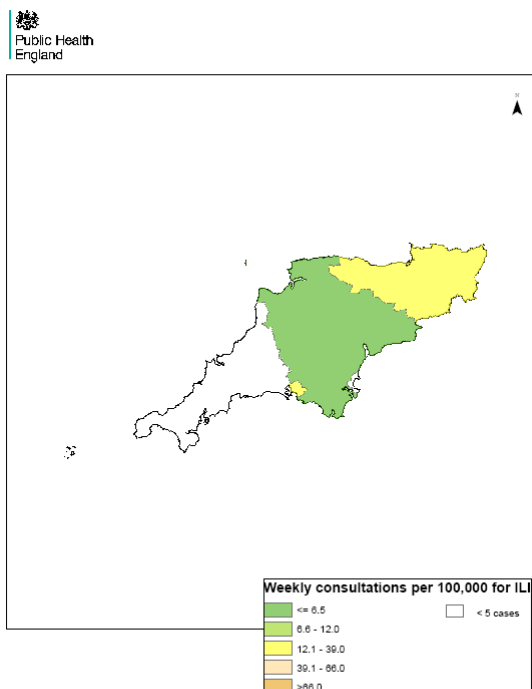
**Week 47**



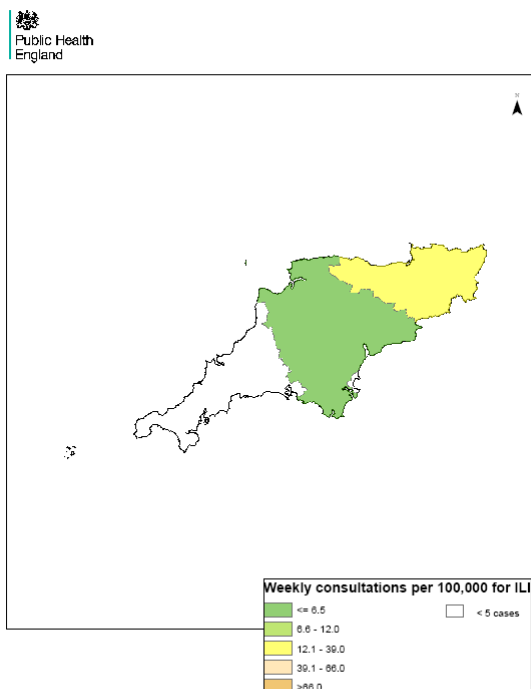
**Week 48**



**Week 49**



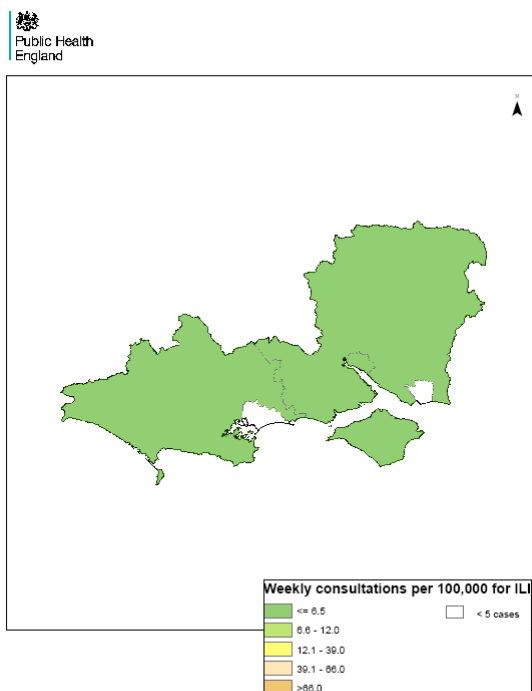
**Week 50**



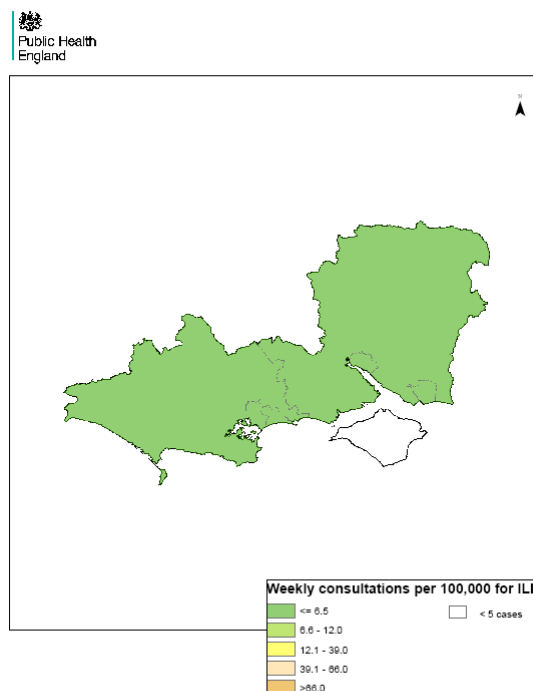
## Wessex

Weekly ILI  
consultation  
rate by LA  
for Wessex  
PHE Centre

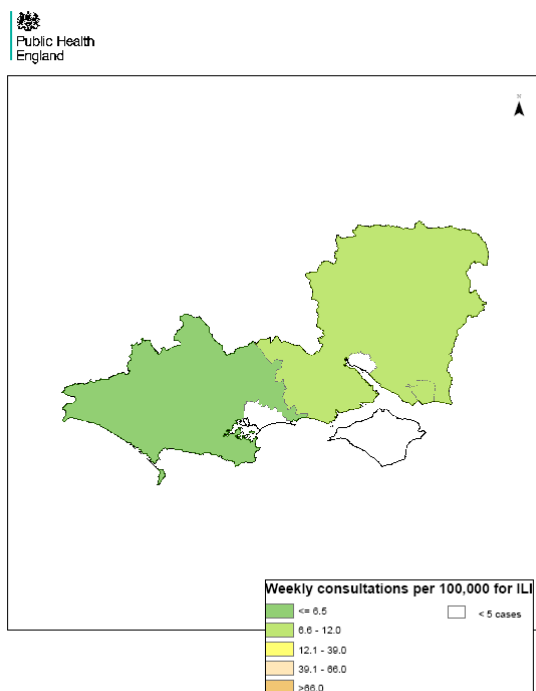
### Week 47



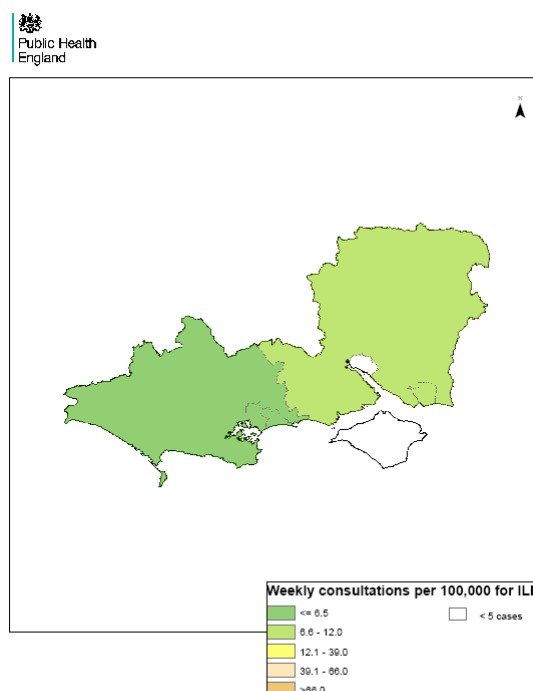
### Week 48



### Week 49



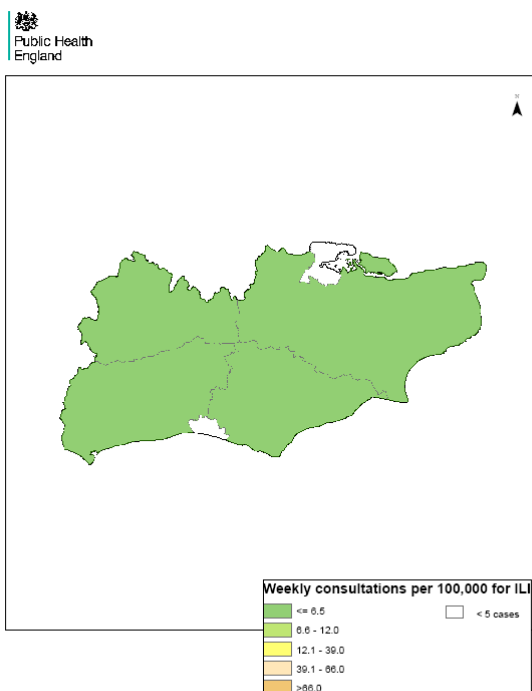
### Week 50



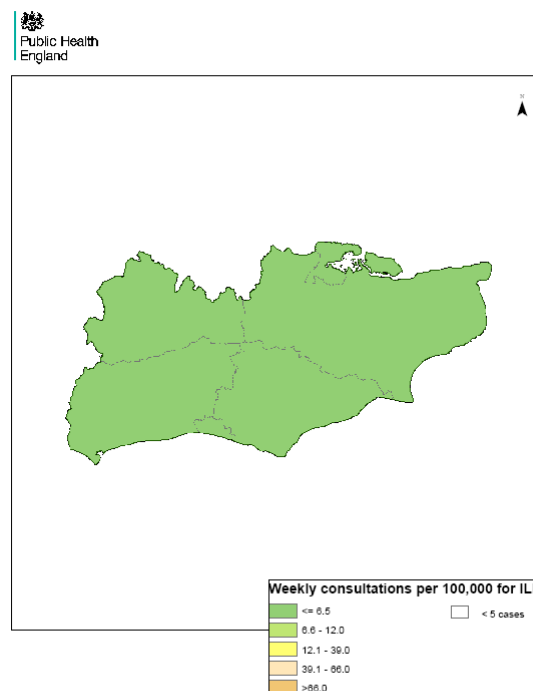
## Kent, Surrey & Sussex

Weekly ILI consultation rate by LA for Kent, Surrey & Sussex PHE Centre

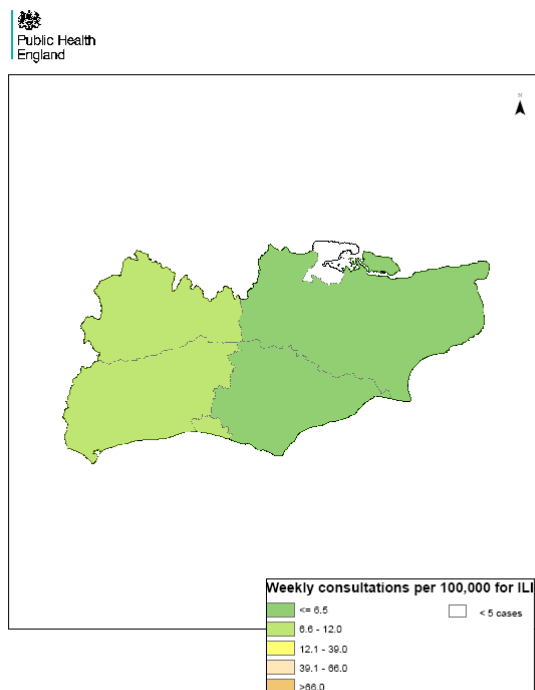
### Week 47



### Week 48



### Week 49



### Week 50

