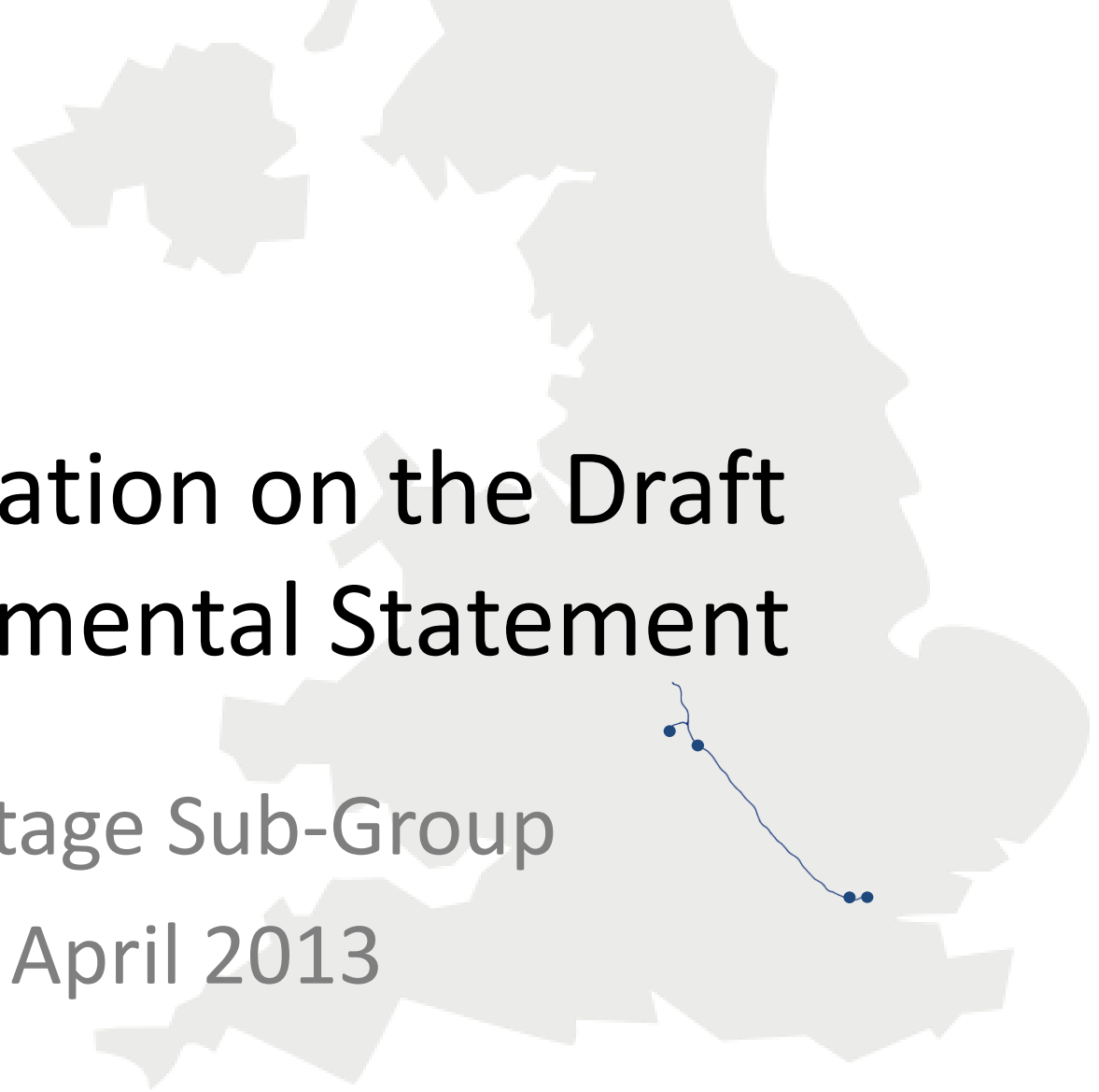




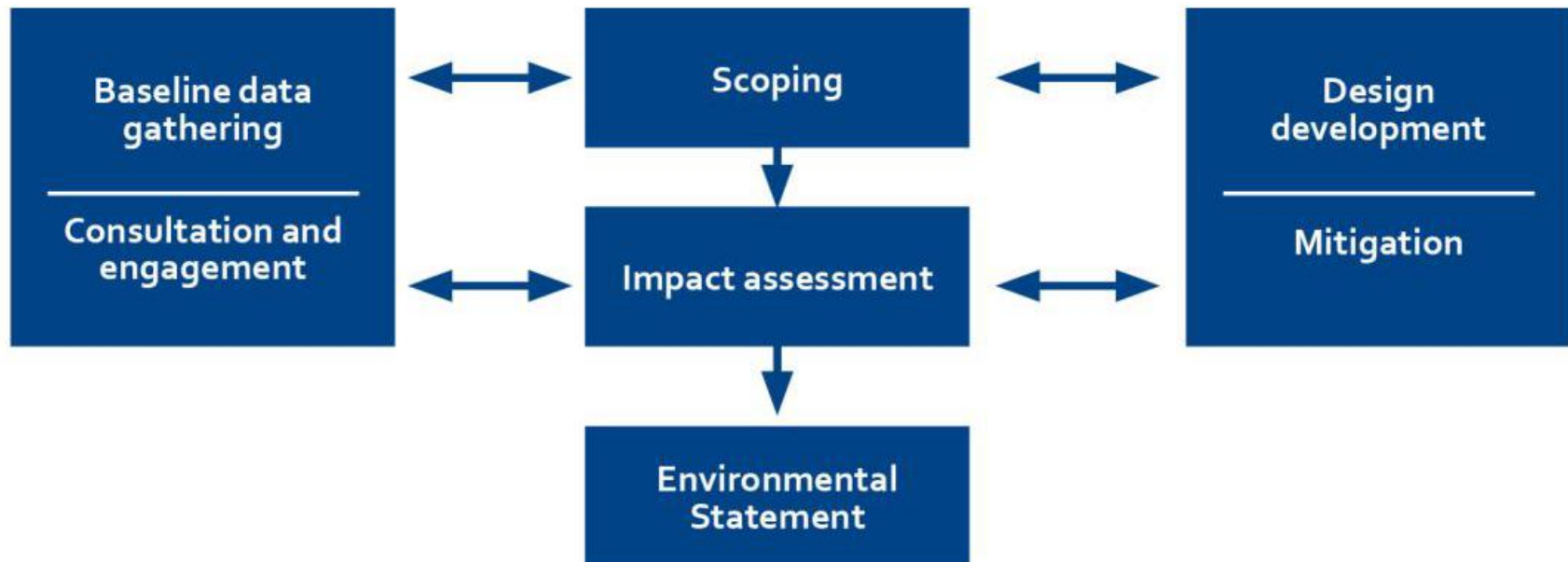
Consultation on the Draft Environmental Statement

Heritage Sub-Group

April 2013



The EIA process is designed to understand the significant environmental effects of the scheme:-



- Environmental Statement – is a key Bill supporting document(s)
- HS2 ES Builds upon the HS2 Appraisal of Sustainability used in route optioneering and consultation of draft ES.
- ES is required by Law
 - EU Directive 2011/92/EU – Town & Country Planning EIA Regulations 2011
- ES is used to make Law
 - Parliamentary Standing Order 27a
- The ES is an objective assessment to inform decision makers

- We are consulting as ‘good practice’ although consultation is not prescribed for the hybrid Bill process
- The consultation is just about the potential environmental effects of the proposals
- Plan to publish in 2013 (Spring).
- Contains a refinement of the proposals and emerging significant effects based on our assessment work to date and the measures envisaged in order to avoid, reduce and, if possible, remedy significant adverse effects.
- Covers 14 topics including landscape and visual, community and sound, noise and vibration, as set out in the consulted SMR.
- Assessment work will continue throughout 2013 to inform the final ES.
- This is an important opportunity for individuals and communities to consider our findings and proposals for mitigation.

Draft Environmental Statement



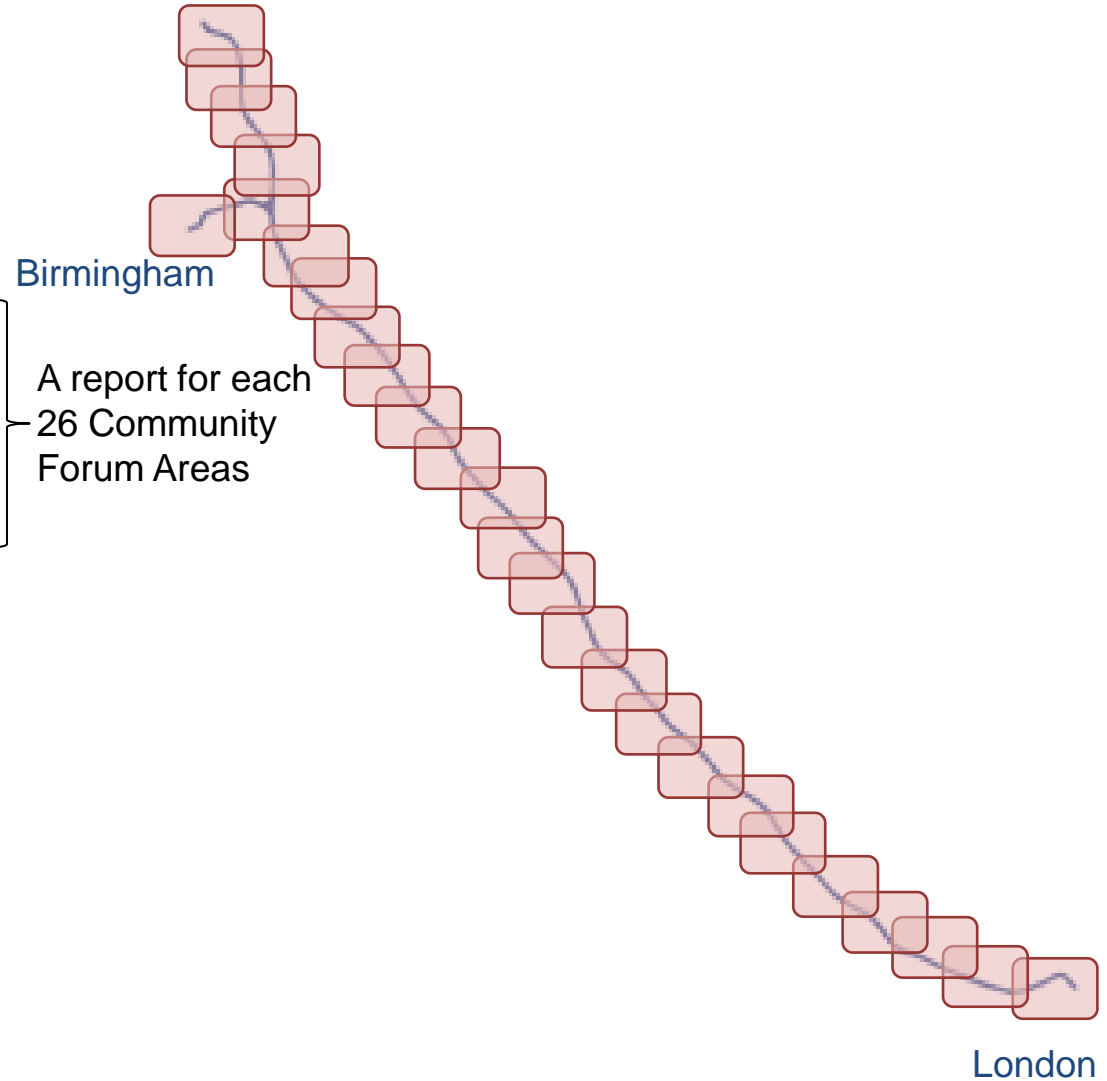
Non-Technical Summary

Main Report (Vol 1)
Introduction to the Proposed Scheme & Main Alternatives

Community Forum Area Reports
(Vol 2)

Drawings, Photomontages,
Operational Sound Contour Maps

Draft Code of Construction Practice to be consulted on

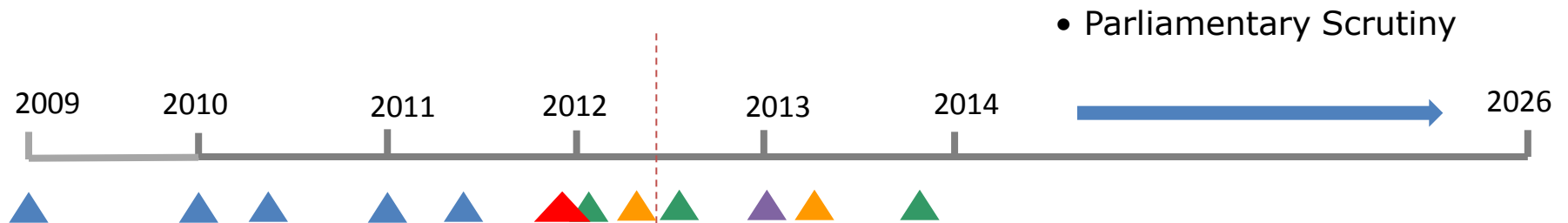


We currently intend :-

- to include a series of events on the local draft ES documents;
- (upon launch) to mail out a letter to all properties within 1km of the route in rural and 500 metres in urban areas; and will write to stakeholder organisations (we are looking to have a wider mail out than that carried out for the Property and Compensation Consultation); and
- to launch an information campaign (both online and in regional press) to raise awareness of consultation events.

- We intend to hold localised engagement events over the consultation period.
- Interactive technology will enable members of the public to assess local impacts. Project team members will be on-hand to assist the consultation.
- A copy of each of the draft ES and draft Code of Construction Practice (CoCP) documents will be available on the internet.
- Further details will be made available as arrangements are confirmed.

ES Timeline

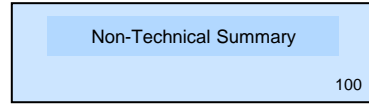


- HS2 Post Consultation Report to Government
- SoS Announces LWM Route
- ES Scope & Methodology In Consultation
- ES Scope & Methodology Finalised
- EIA snapshot – *EIA to late Summer 2013*
- Draft ES Complete for Consultation ▲
- Formal ES Complete for hybrid Bill ▲

Draft (for Consultation) Environmental Statement structure

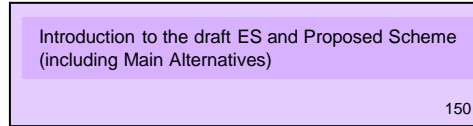
Total Draft ES:
~4,500 A4 PAGES
~900 A3 PAGES

NTS (~100 A4 PAGES)

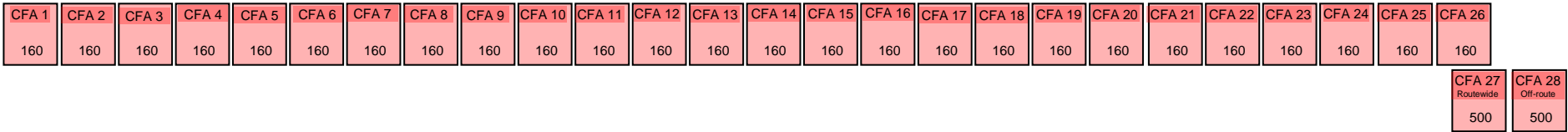


MAIN REPORT

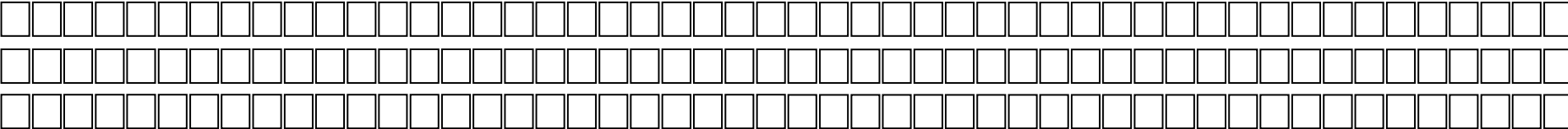
Introduction to the ES, description of scheme, the case for Hs2 and main alternatives (~150 A4 PAGES)



Community Forum Area Reports inc. Routewide and Off-route reports (~4,200 A4 PAGES)



Supporting Drawings (~800 A3 PAGES – 30 drawings per CFA report)



Supporting Colour Photomontages (~100 A3 pages in total – approx. 2-4 pages per CFA)



Code of Construction Practice (~70 PAGES – as a separate document)

