

**THE ARMY FIELD MANUAL**  
**VOLUME II**  
**GENERIC ENEMY (BASIC FORCES)**  
**PART 3**  
**ORBATS AND TABLES OF ORGANISATIONS & EQUIPMENT**

## CONDITIONS OF RELEASE

(Applicable to copies supplied with Ministry of Defence approval to Commonwealth and Foreign Governments).

1. This information is released by the United Kingdom Government to the recipient Government for Defence purposes only.
2. This information must be accorded the same degree of security protection as that accorded thereto by the United Kingdom Government.
3. This information may be disclosed only within the Defence Department of the recipient Government, except as otherwise authorized by the Ministry of Defence (Army).

## AMENDMENTS

Amendment Number	By whom amended	Date amended
AL1 Cover & Facing Page		

## DISTRIBUTION

*(see Catalogue of Army publications, Part II)*

Regular Army (other than those mentioned below) .....	Scale C
TA .....	Scale C
Joint Services Defence College .....	100
Staff College .....	350
JDSC .....	100
RMCS .....	50
RMAS .....	100
Arms Schools .....	50
CATC .....	100
BATUS .....	100
All BBGTs .....	10
Division/District HQs .....	10
Bde HQs .....	5

## CONTENTS

	<b>Page</b>
<b>PREFACE</b>	ii
<b>ORBAT</b>	
Section 1      Basic Forces Index	1-25
<b>TABLES OF ORGANISATION AND EQUIPMENT</b>	
Section 2      Organisation and Equipment Index	1-23
<b>INDEX OF GENFORCE EQUIPMENT</b>	
Section 3      Index by Equipment/Vehicle/Weapon System	1-1 to 28-1
<b>ALPHABETICAL LISTING OF ALL GENFORCE EQUIPMENT</b>	
Section 4      All Equipment Listings	29-1 to 29-37

## PREFACE

### GENERIC ENEMY BASIC FORCES

#### GENFORCE

1. The purpose of the Generic Enemy Force (GENFORCE) is to provide a basis for the generation of enemy forces for all except the most specialised training needs. It is designed to be used flexibly, in a modular fashion, to craft enemy requirements for training.
2. GENFORCE offers three types of artificial, yet challenging and realistic, opposing force options. It will be issued in a series of three packages:

**Basic Forces:** This enemy has heavy and light armoured forces, predominantly equipped along Former Soviet Union (FSU) lines. Its Tactical Doctrine and Operational Art are modelled on a revision of Army Field Manual Volume II.

**Mobile Forces:** This enemy is futuristic, more advanced in terms of equipment and Tactical Doctrine, with an Operational Art geared towards less dense battle-field scenarios.

**Rest of the World Enemy (ROWEN):** This composite enemy has a broad range of equipments of mixed origin. Its Tactical Doctrine and Operational Art are designed to support specific operational environments: normal, desert, mountain, FIBUA and jungle.

#### GENSCEN

3. The Training Support Team at the Combined Arms Training Centre has developed an evolutionary scenario generator (GENSCEN) to be used with GENFORCE. GENSCEN will provide a range of country/infrastructure options to supplement and bring to life the GENFORCE selected for a particular exercise. Background information is provided in a format similar to real-life intelligence documents, including a selection of country briefs, with options for political and military personalities and supporting data in a variety of forms.

#### BASIC FORCES

4. The first of the three GENFORCE packages, **Basic Forces**, is issued in three separate folders as follows:

Part 1 - Operational Art

Part 2 - Tactical Doctrine

Part 3 - ORBATs and Tables of Organisations & Equipment

5. GENFORCE Basic Forces supersedes Army Code 71357 for training. However, the latter publication should be retained and will remain available on demand.

**GENFORCE**

(GENERIC ENEMY FORCES)

**WESTERN STRATEGIC  
MILITARY GROUPING  
ORBAT**

(BASIC FORCES)

## WESTERN STRATEGIC MILITARY GROUPING BASIC FORCES INDEX

### 01. BASIC FORCES

- 02. 26 TACTICAL AIR
- 03. 103 AIRBORNE DIVISION
- 04. 35 MOTOR RIFLE DIVISION
- 05. 3 ARTILLERY DIVISION
- 06. 10 ARTILLERY DIVISION

### 07. 8 COMBINED ARMS ARMY

- 08. 120 MOTOR RIFLE DIVISION
- 09. 4 MOTOR RIFLE DIVISION
- 10. 9 TANK DIVISION
- 11. 79 TANK DIVISION

### 12. 40 COMBINED ARMS ARMY

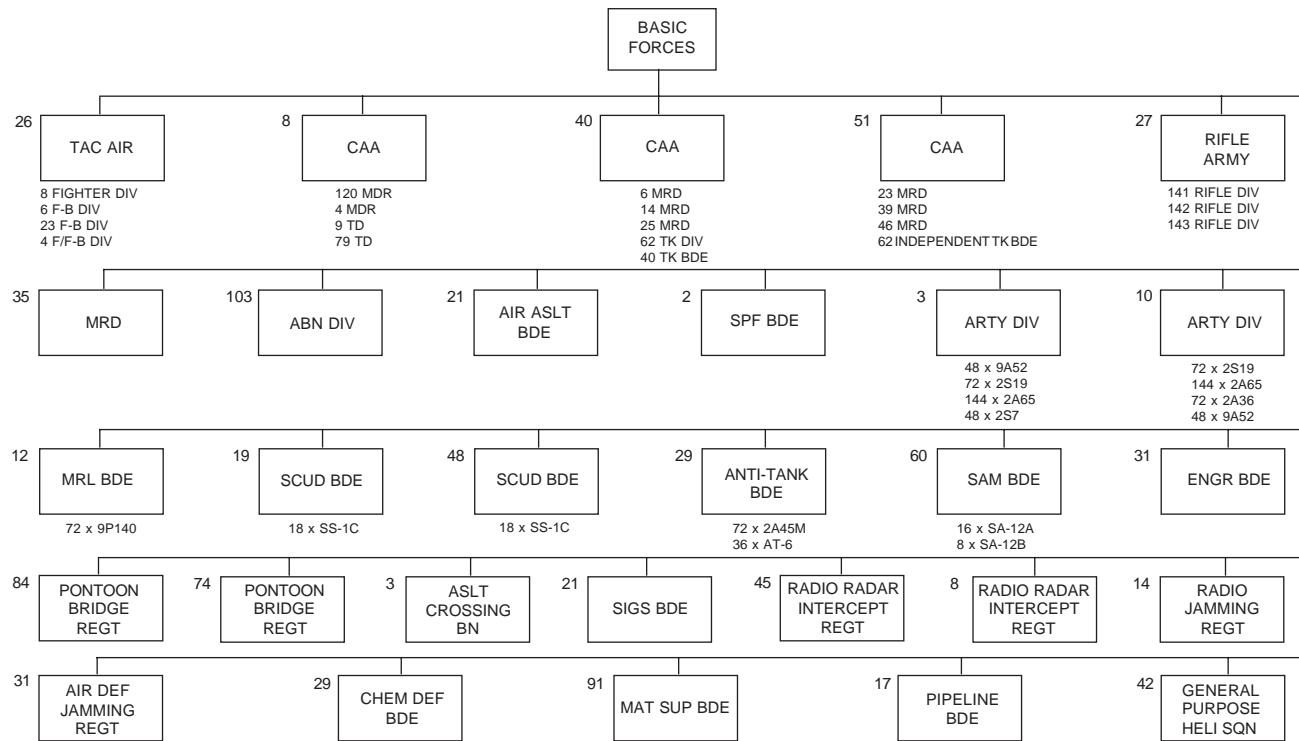
- 13. 6 MOTOR RIFLE DIVISION
- 14. 14 MOTOR RIFLE DIVISION
- 15. 25 MOTOR RIFLE DIVISION
- 16. 62 TANK DIVISION

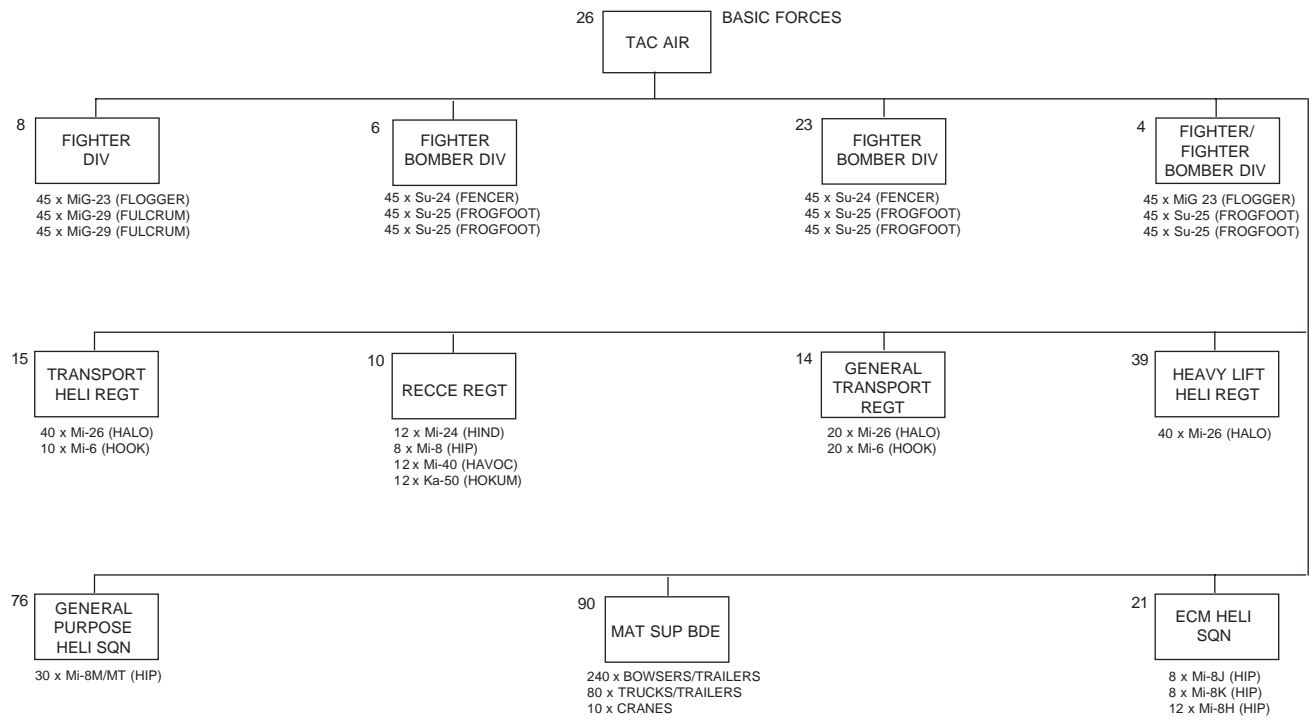
### 17. 51 COMBINED ARMS ARMY

- 18. 23 MOTOR RIFLE DIVISION
- 19. 39 MOTOR RIFLE DIVISION
- 20. 46 MOTOR RIFLE DIVISION
- 21. 65 INDEPENDENT TANK BRIGADE

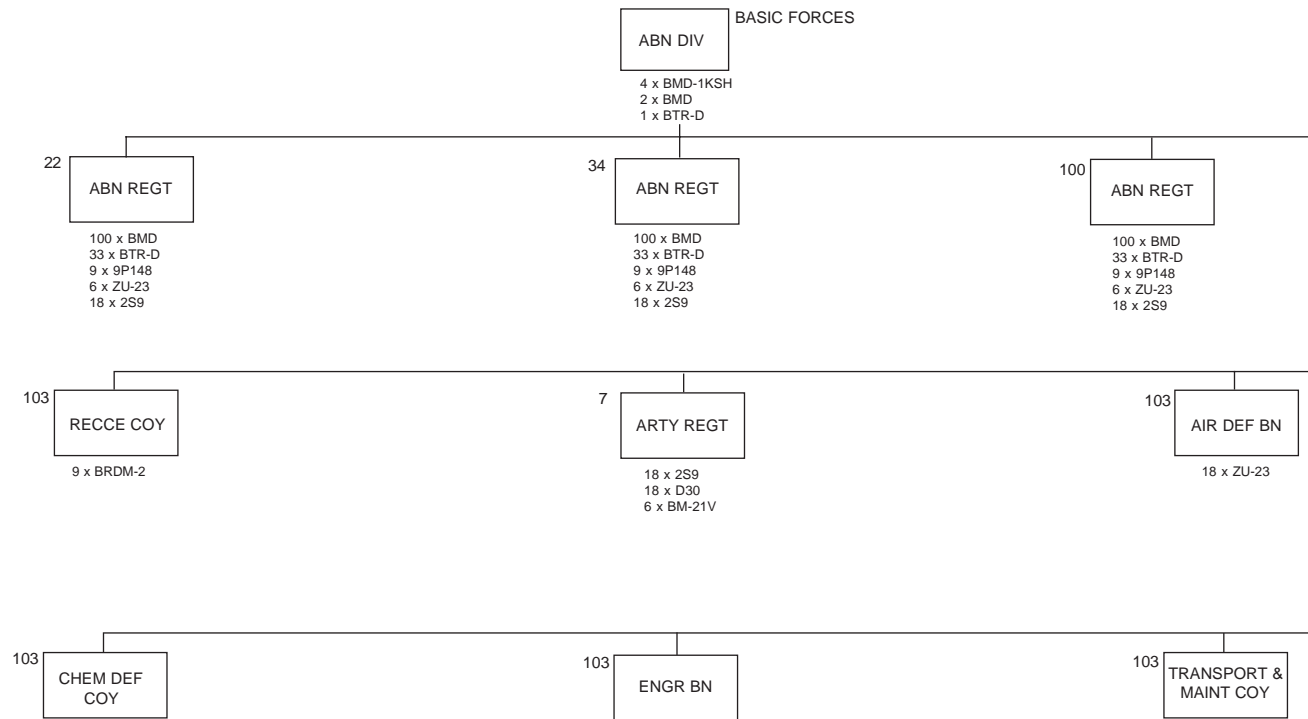
### 22. 27 RIFLE ARMY

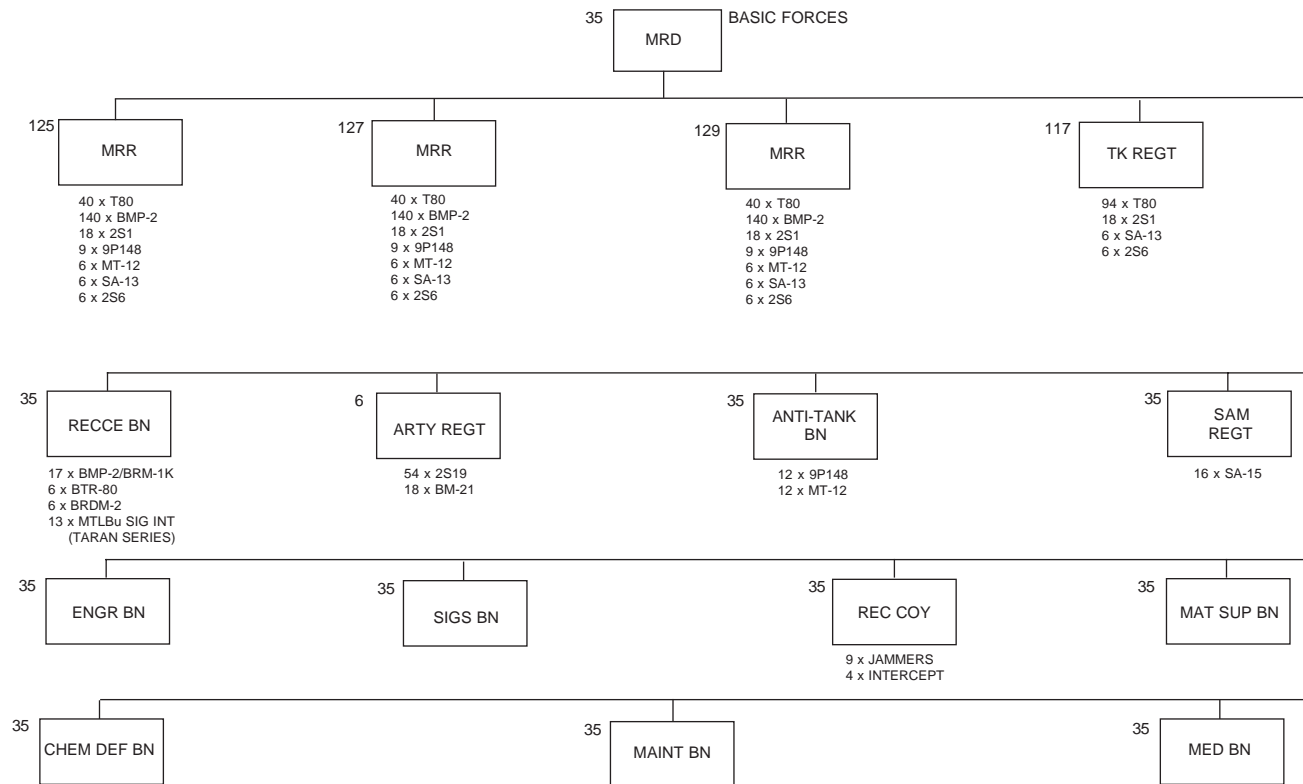
- 23. 141 RIFLE DIVISION
- 24. 142 RIFLE DIVISION
- 25. 143 RIFLE DIVISION
- 26. RIFLE REGIMENT

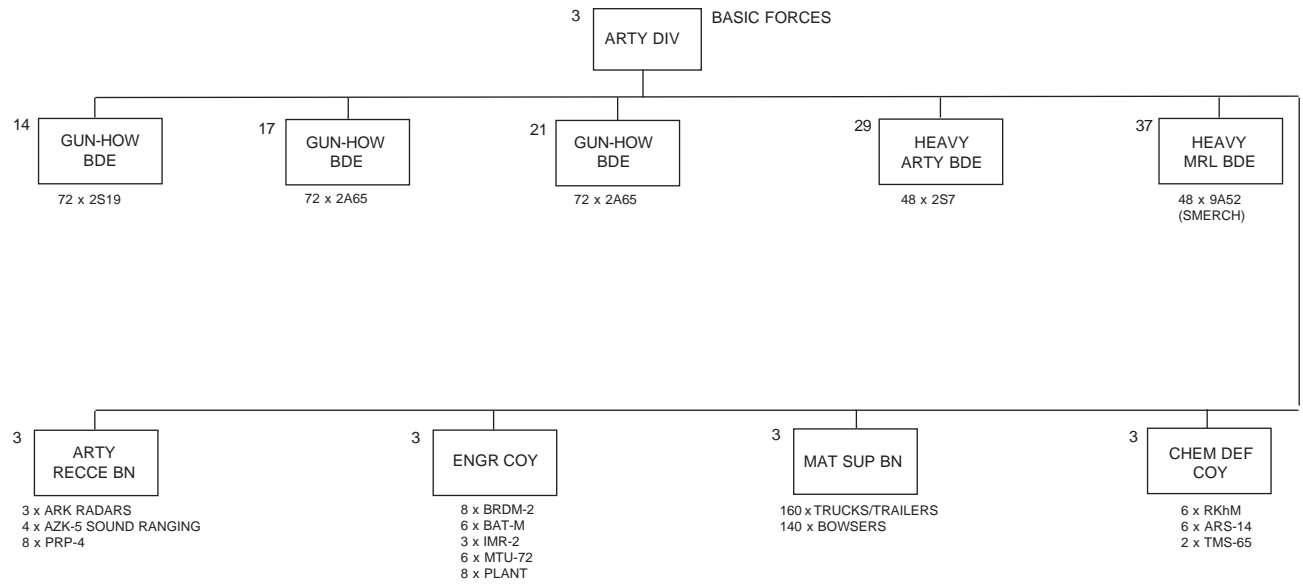






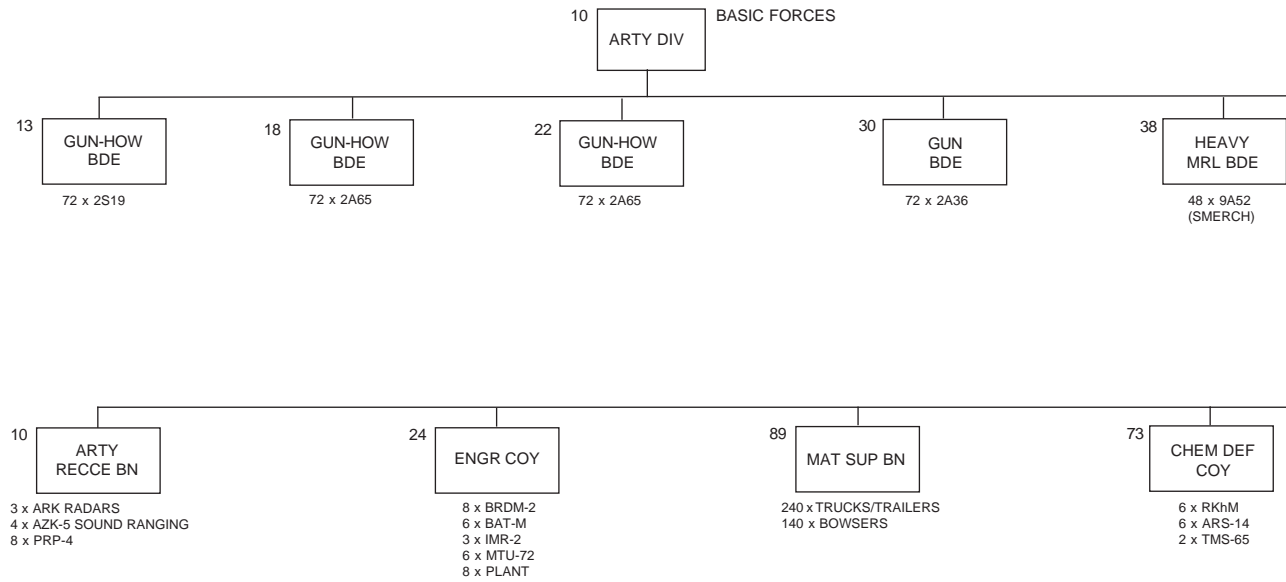






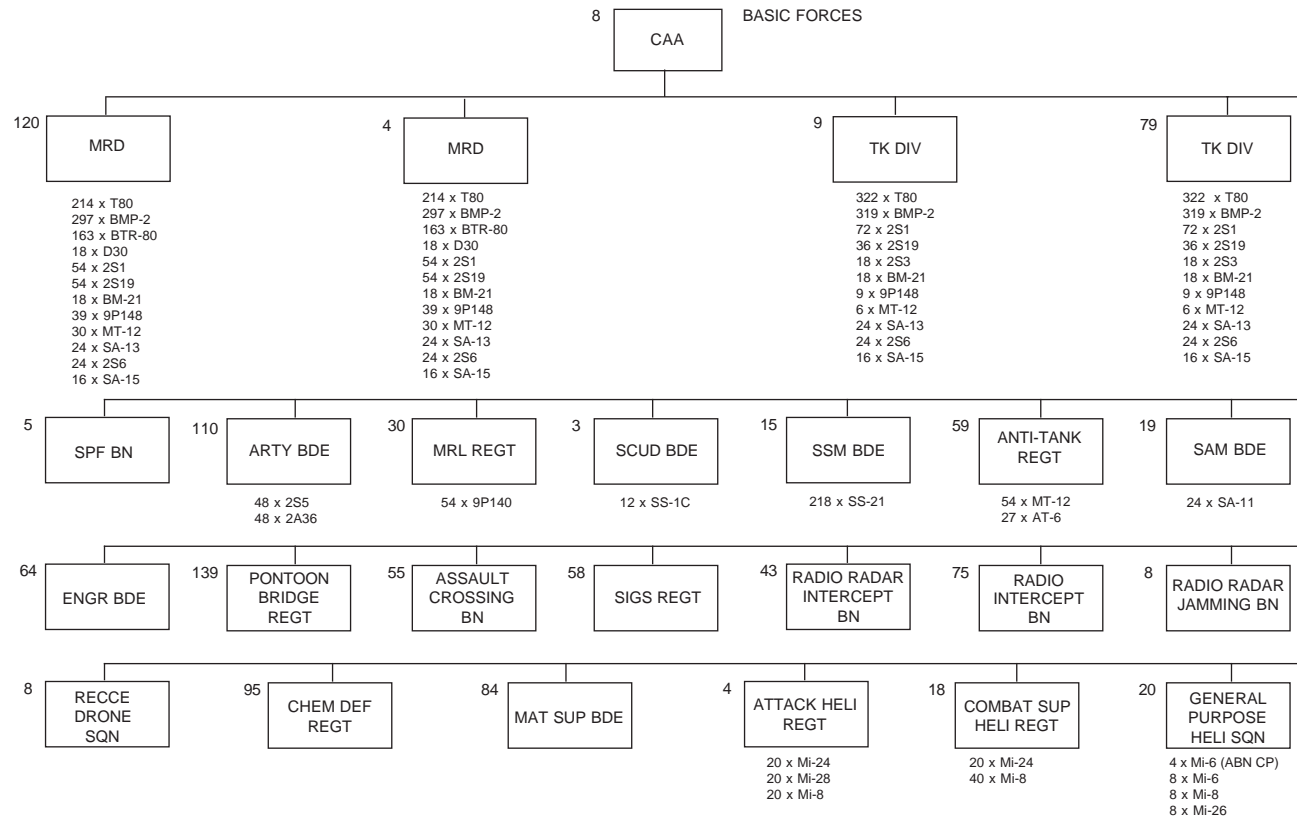
**KEY EQUIPMENT TOTALS**

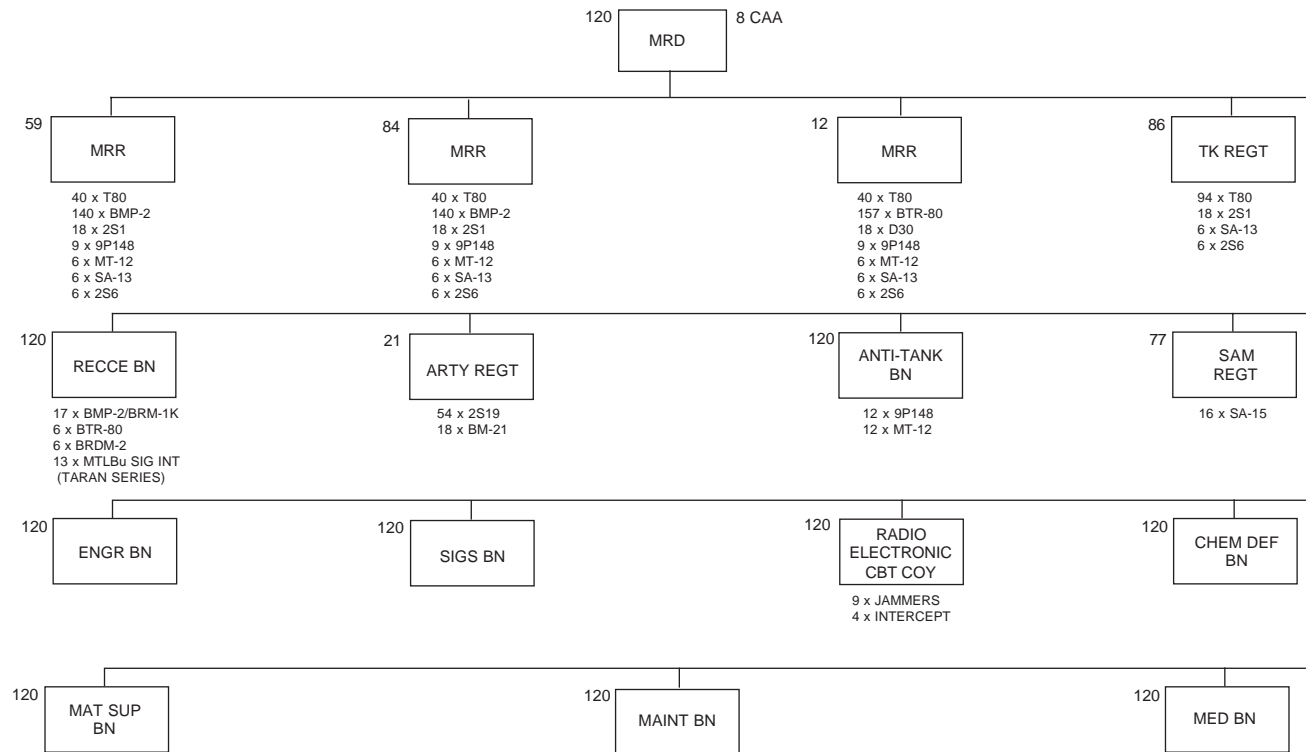
- 72 x 2S19 (152mm SP HOW)
- 144 x 2A65 (152mm TOWED HOW)
- 48 x 2S7 (203mm SP GUN)
- 48 x 9A52 (300mm MBRL)

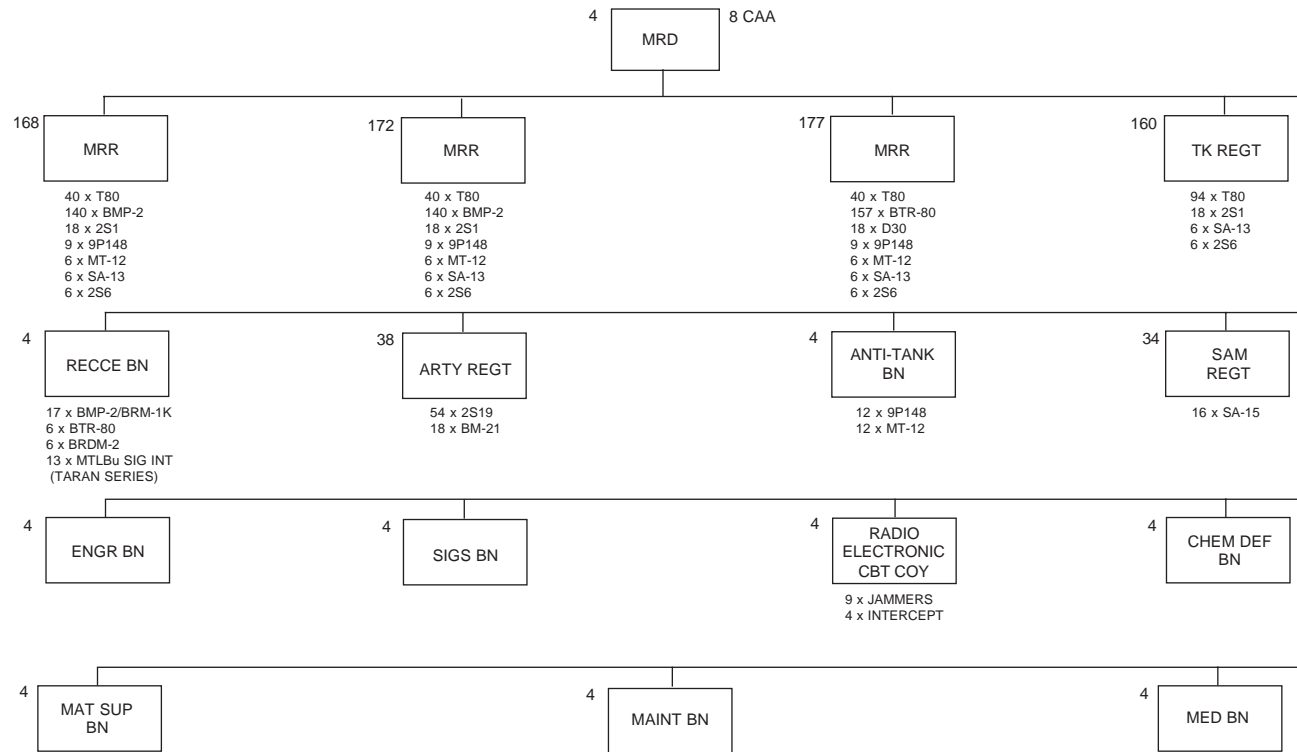


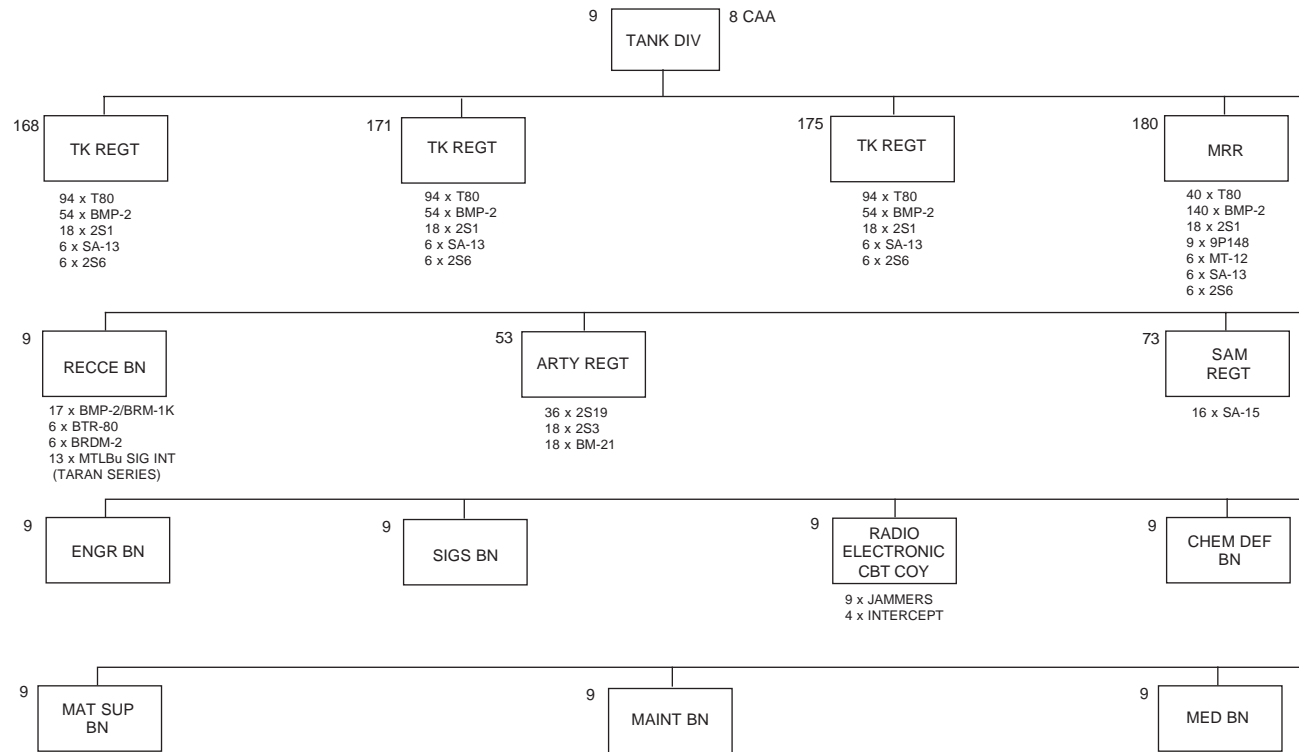
**KEY EQUIPMENT TOTALS**

72 x 2S19 (152mm SP HOW)  
 144 x 2A65 (152mm TOWED HOW)  
 72 x 2A36 (152mm TOWED GUN-HOW)  
 48 x 9A52 (300mm MBRL)

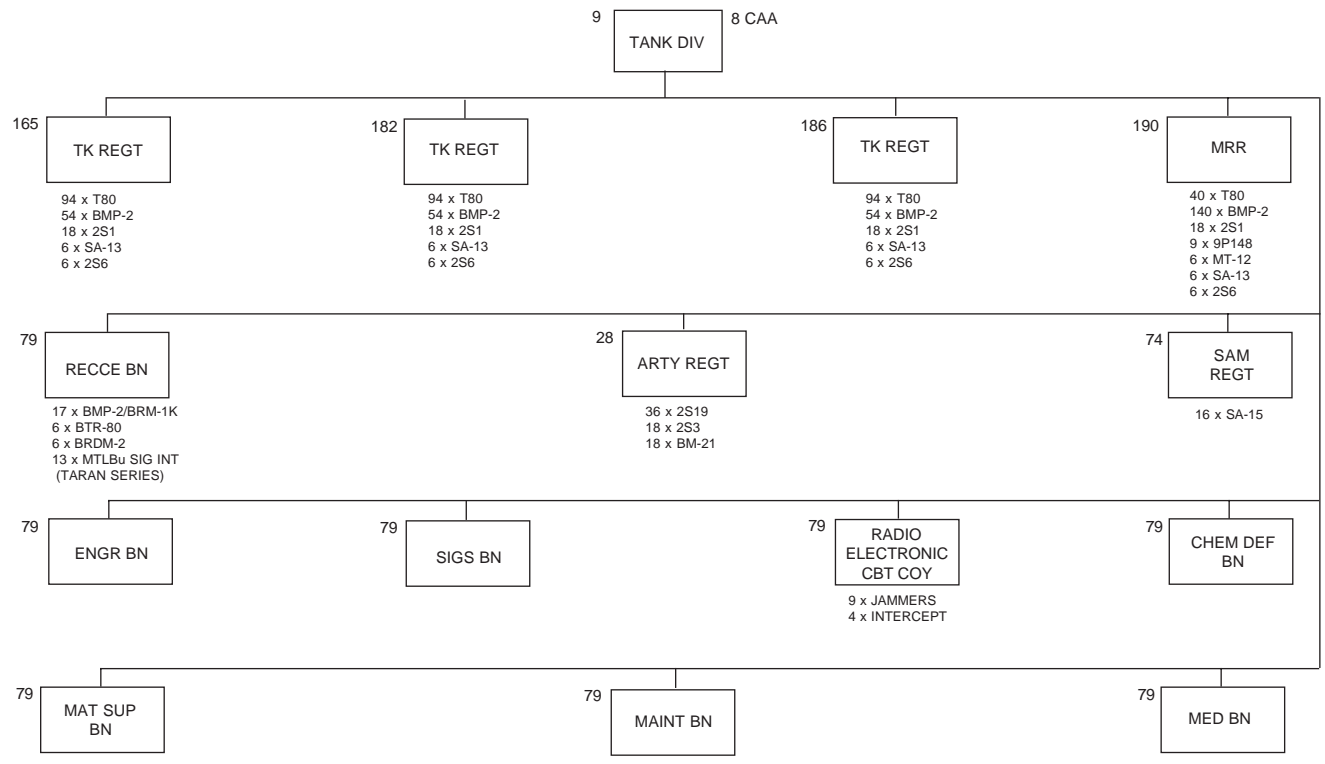


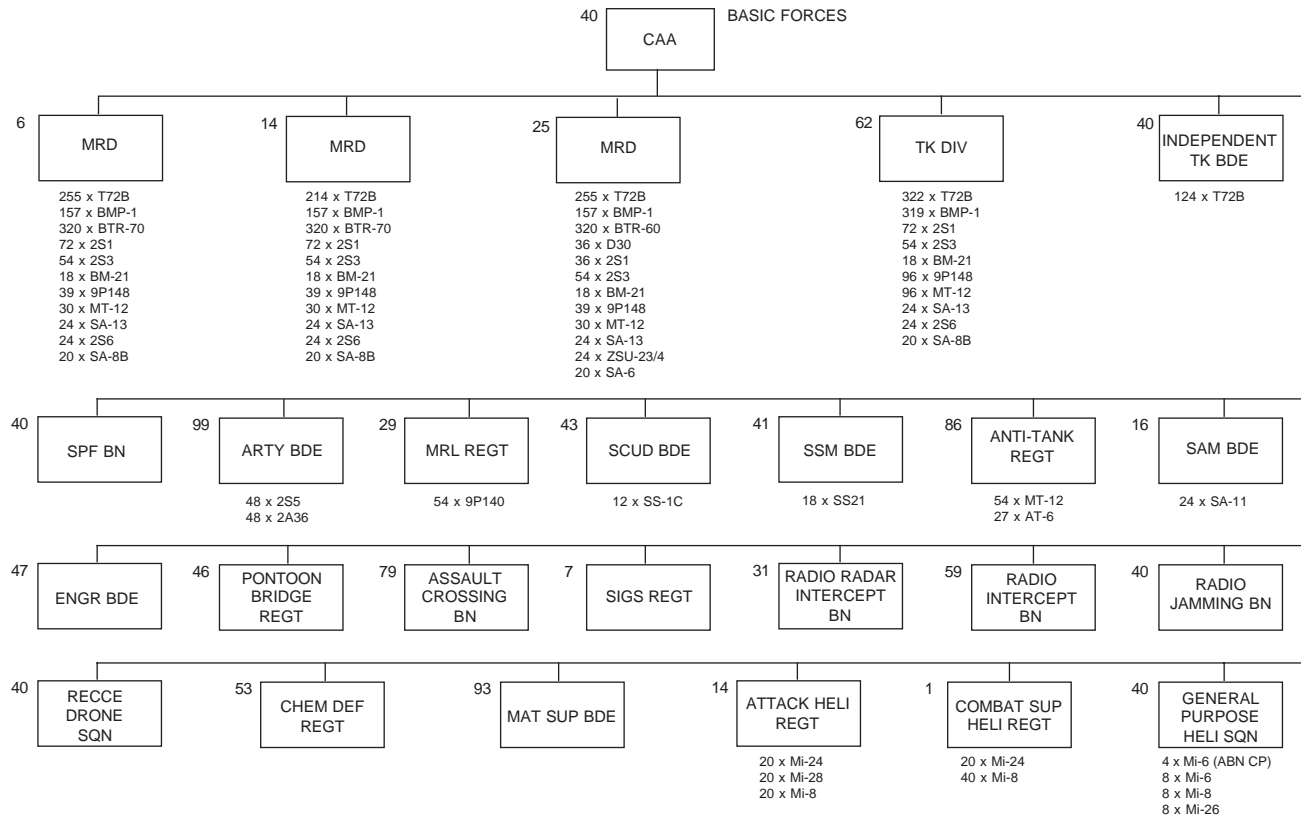


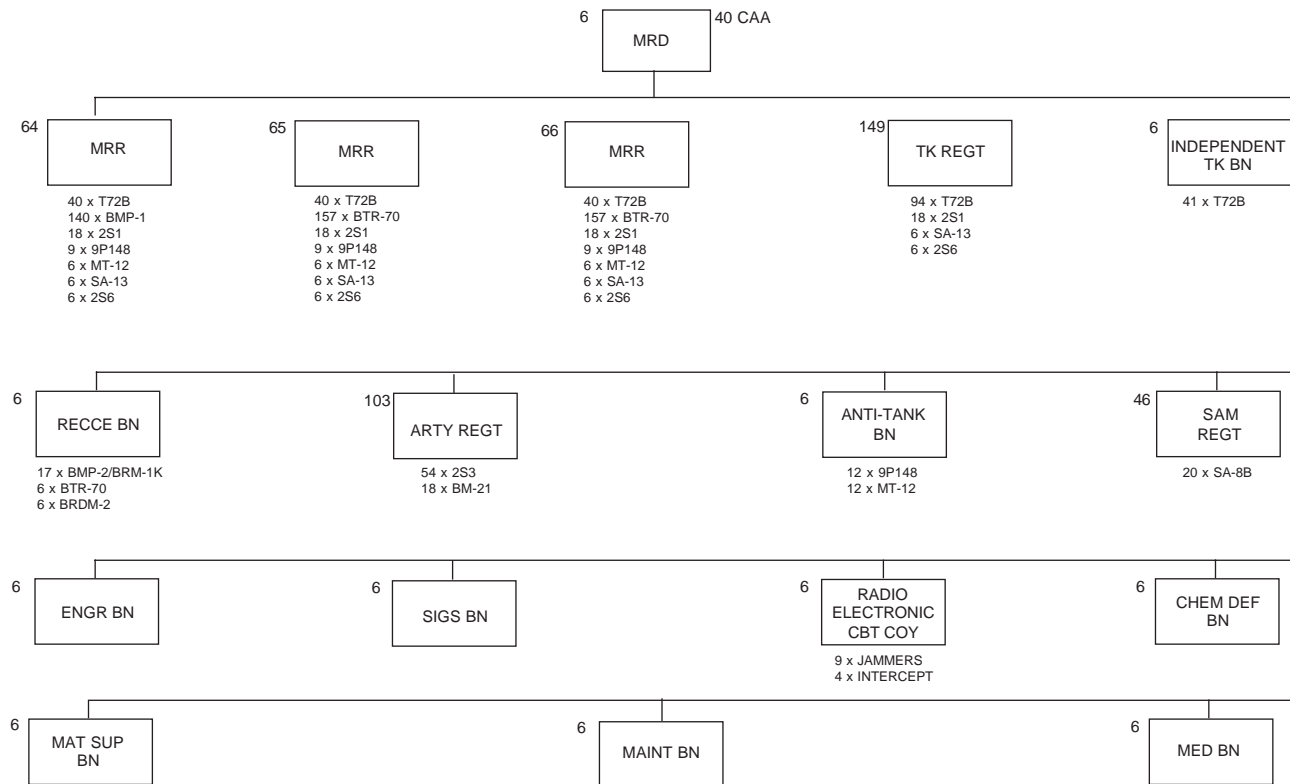


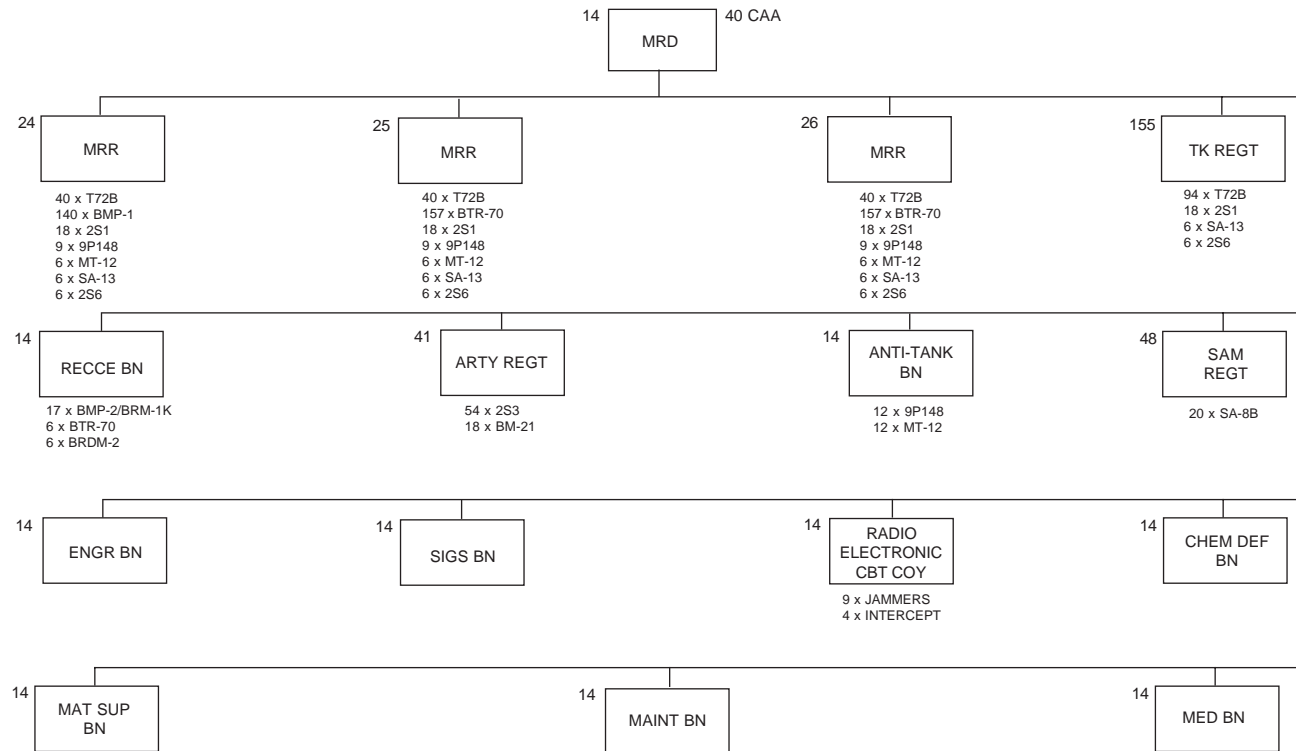


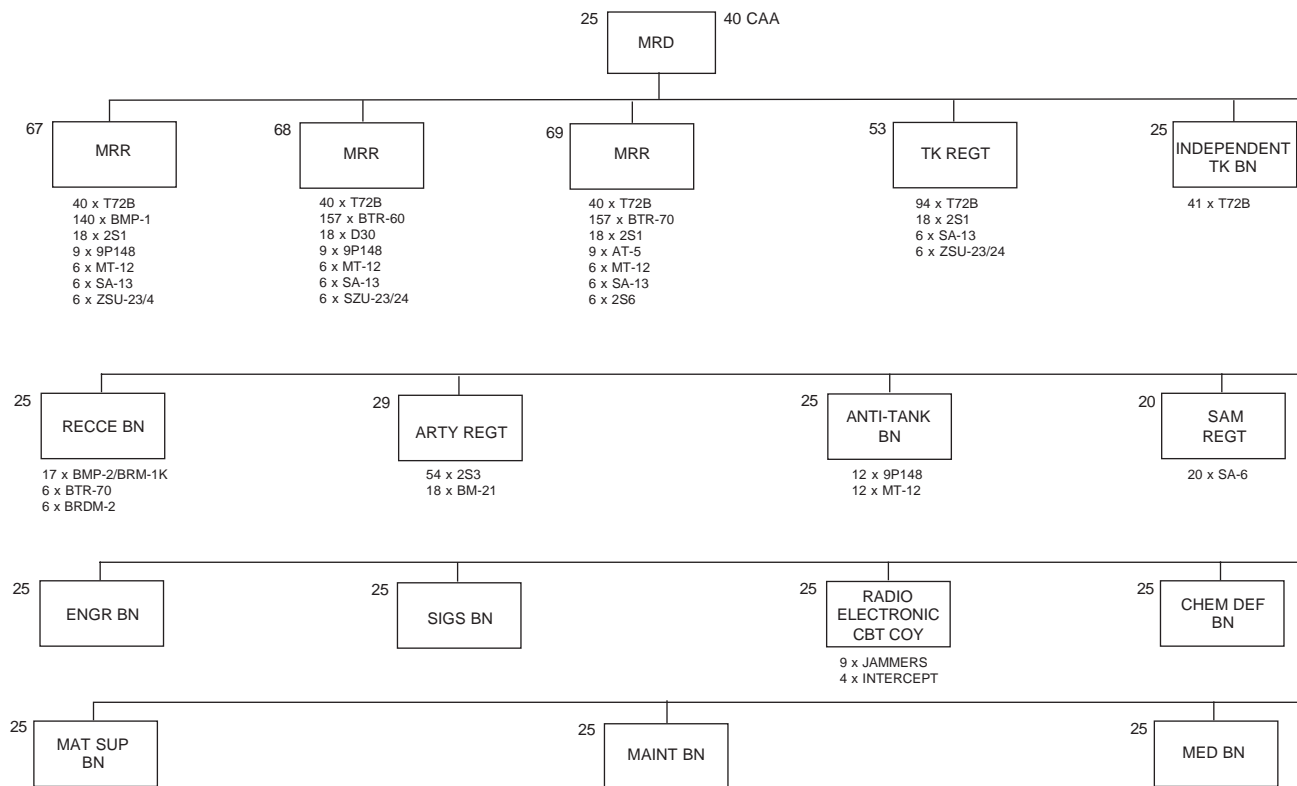


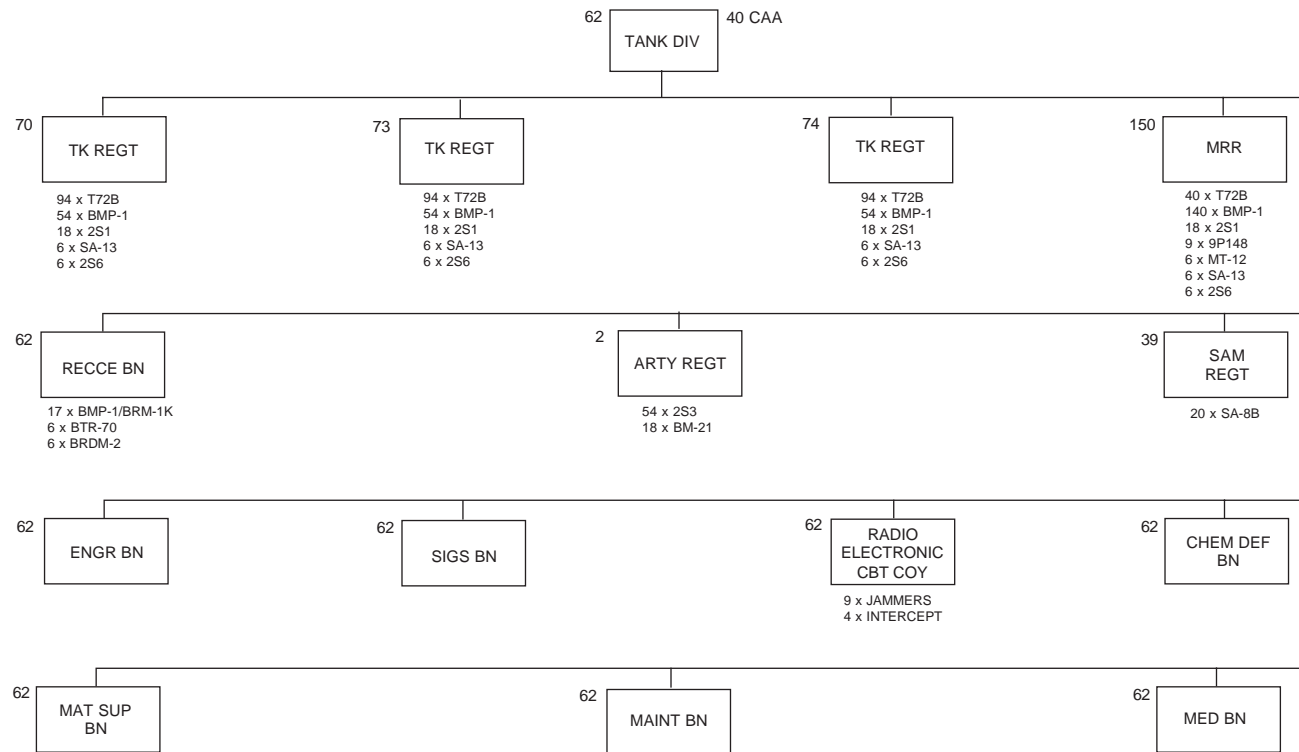


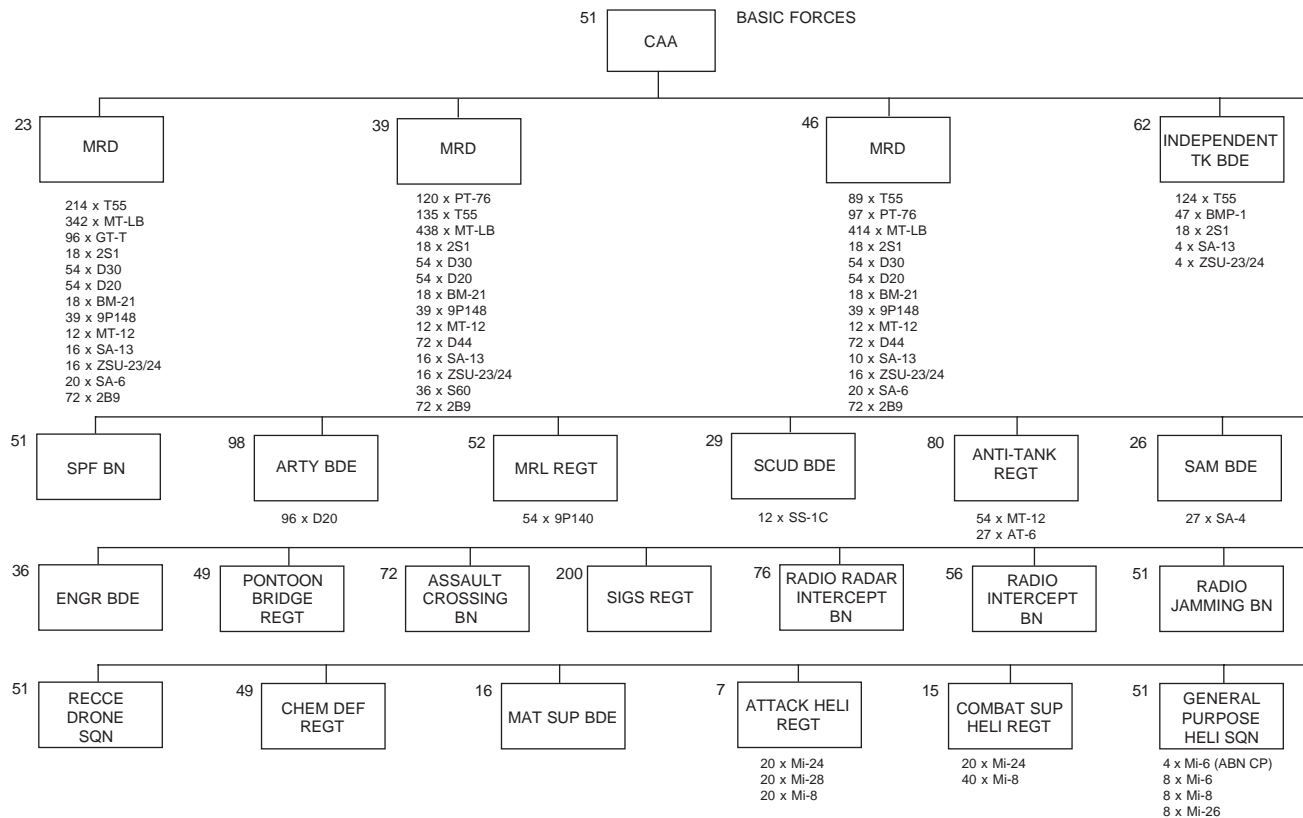


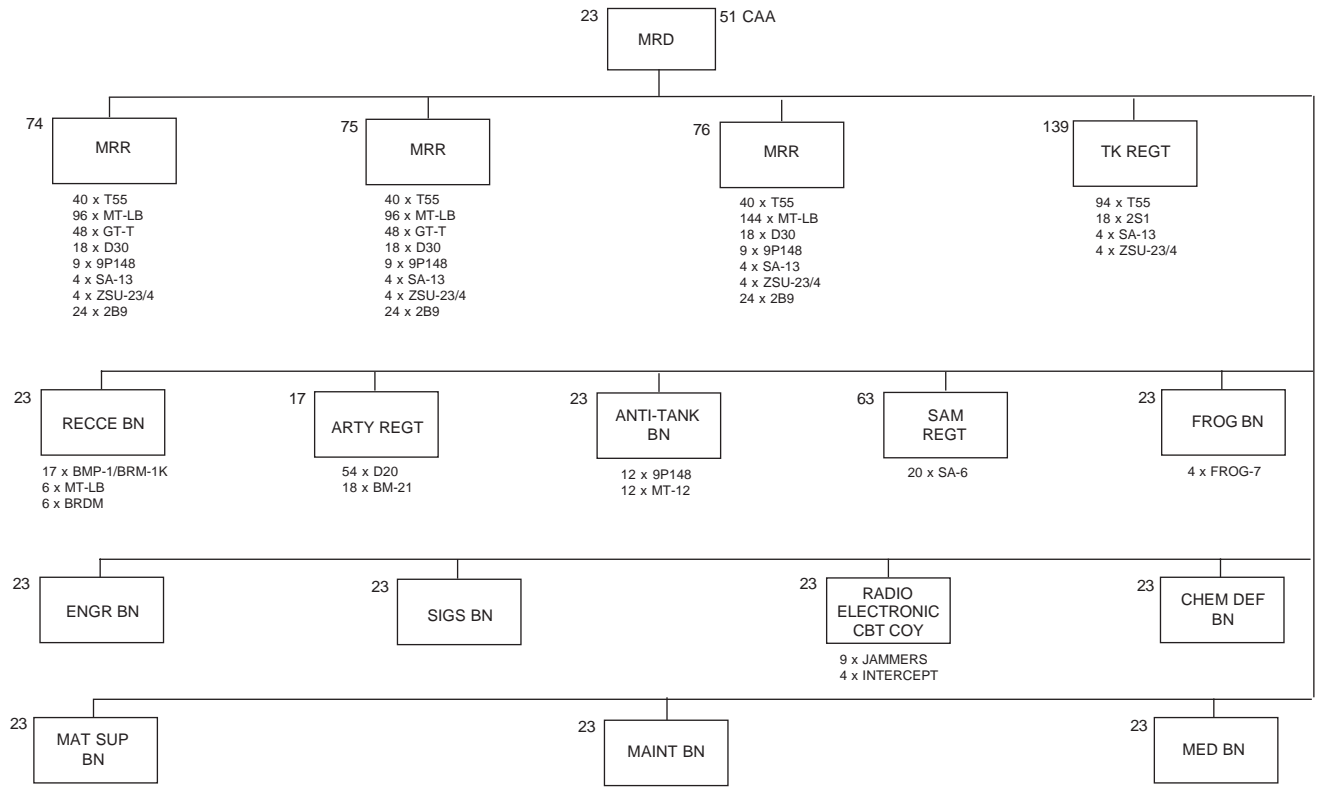




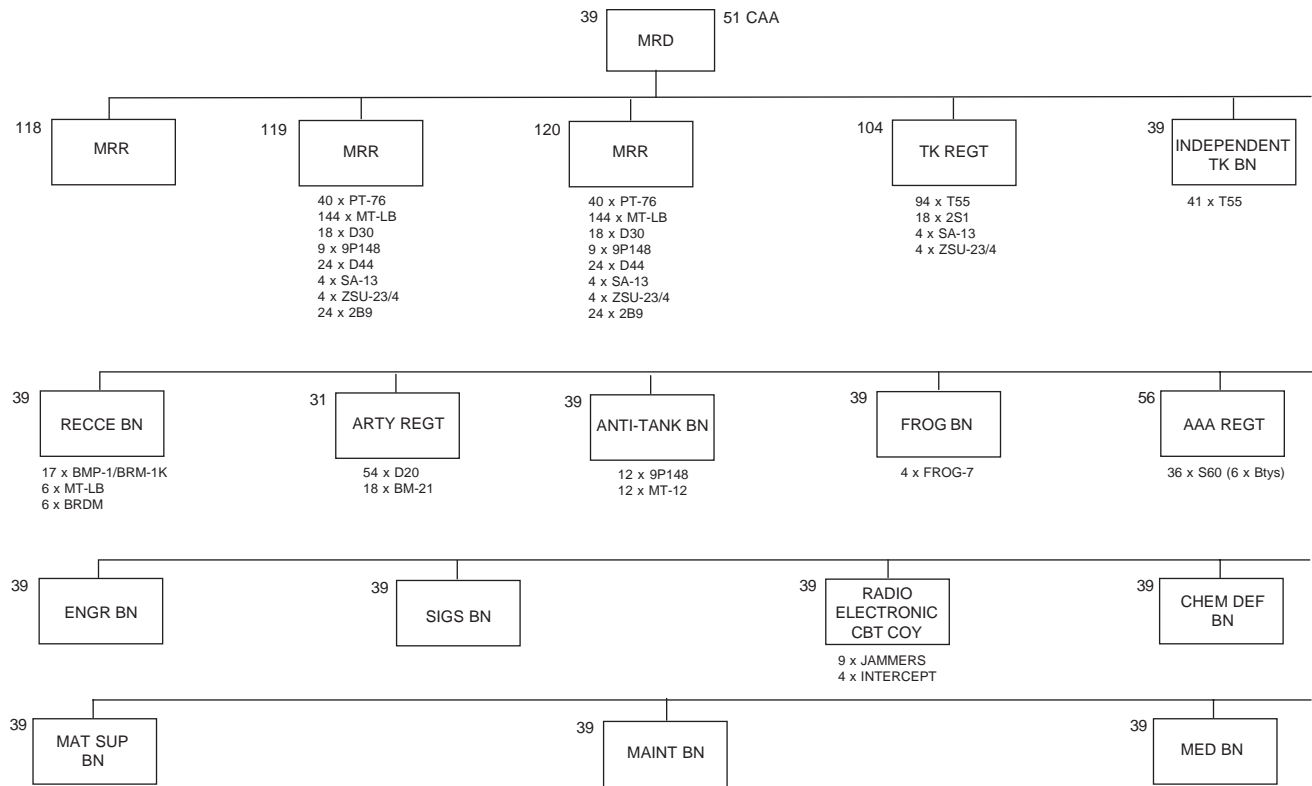


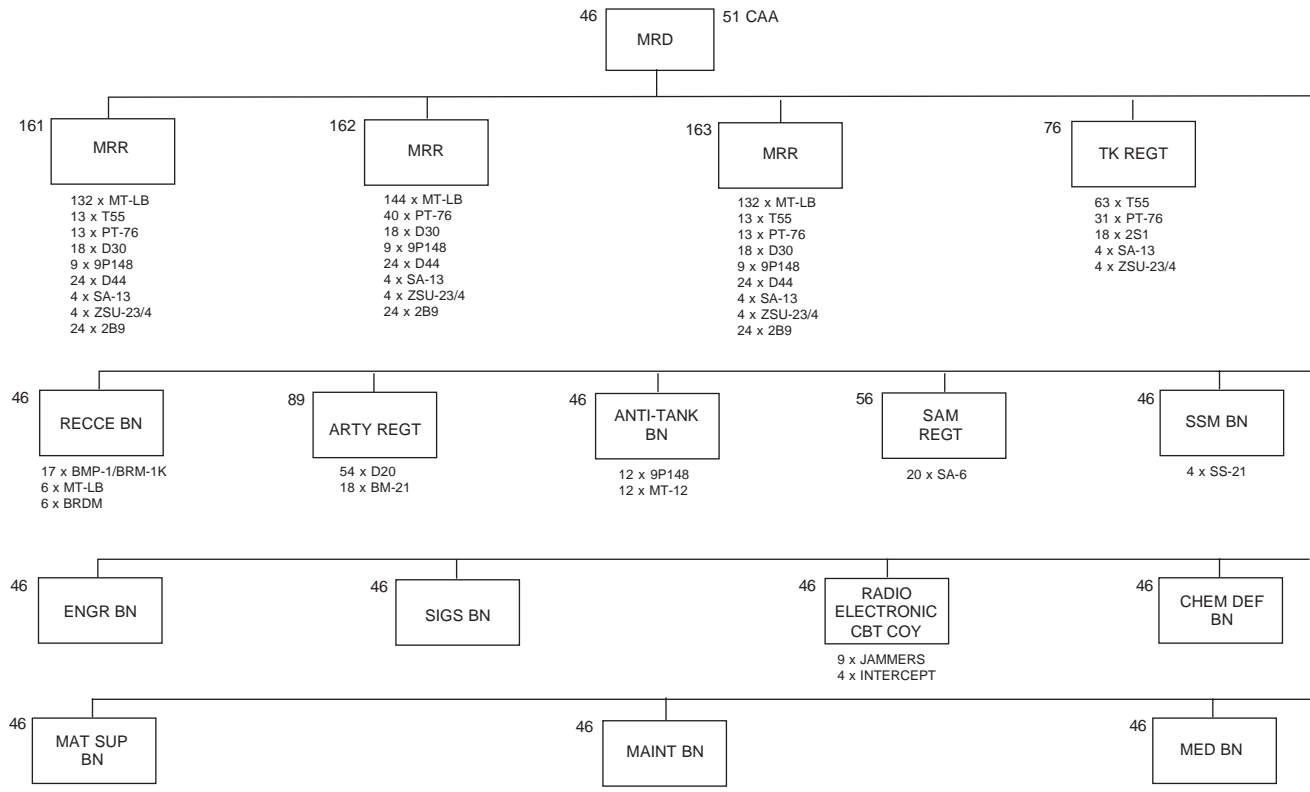


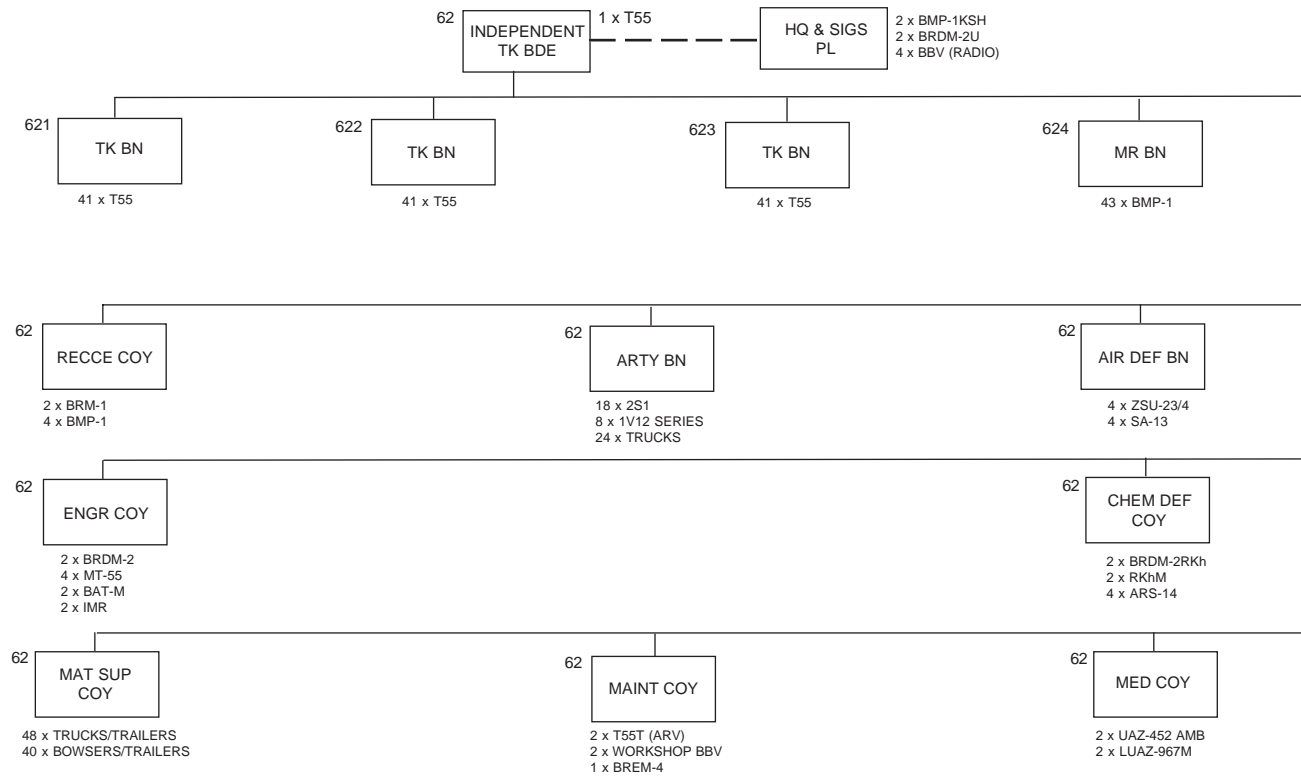


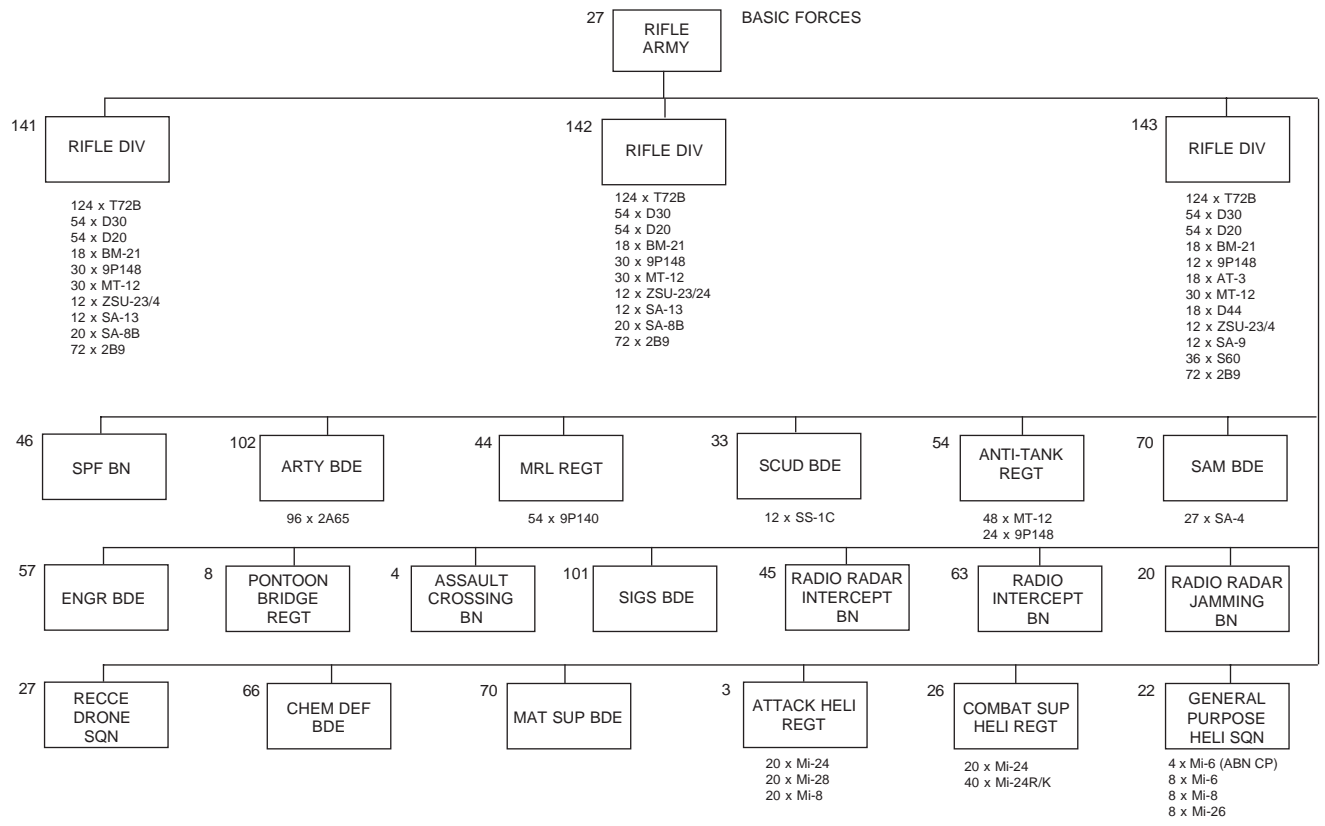


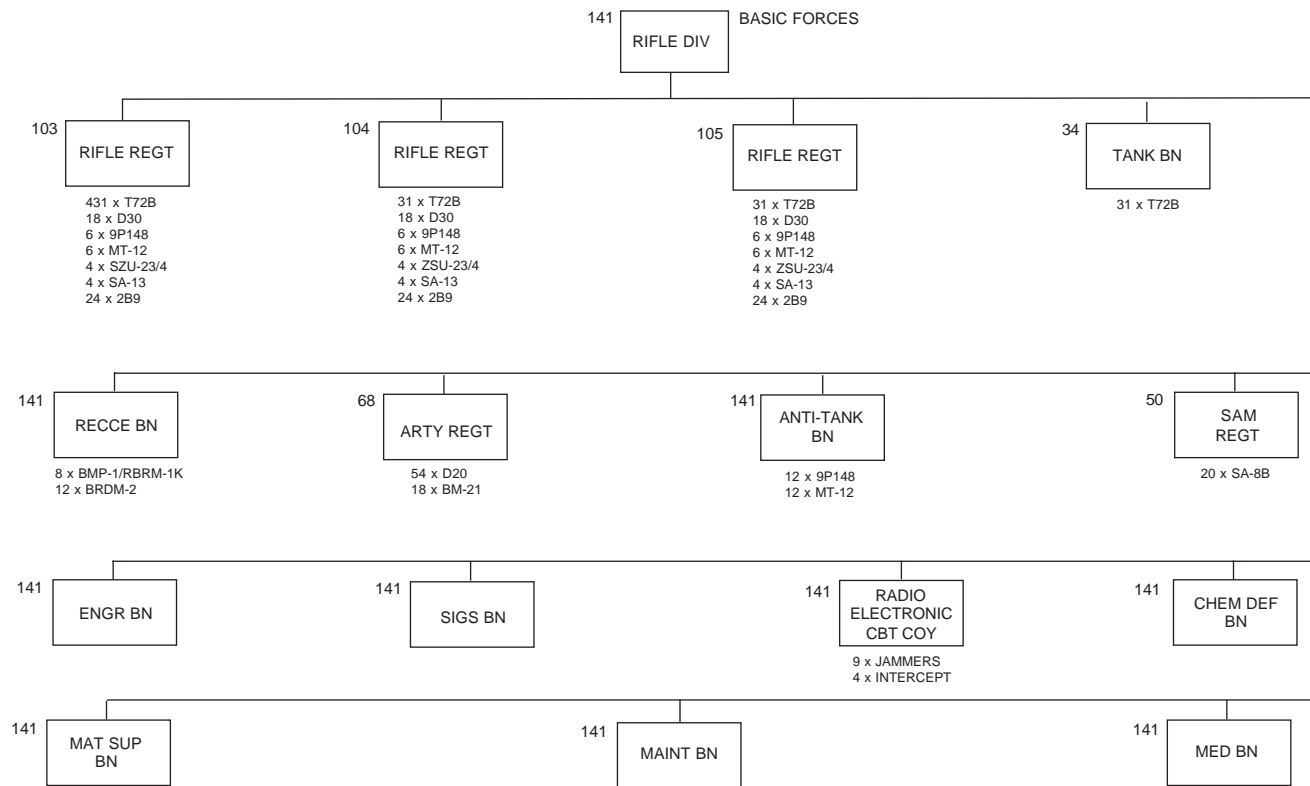


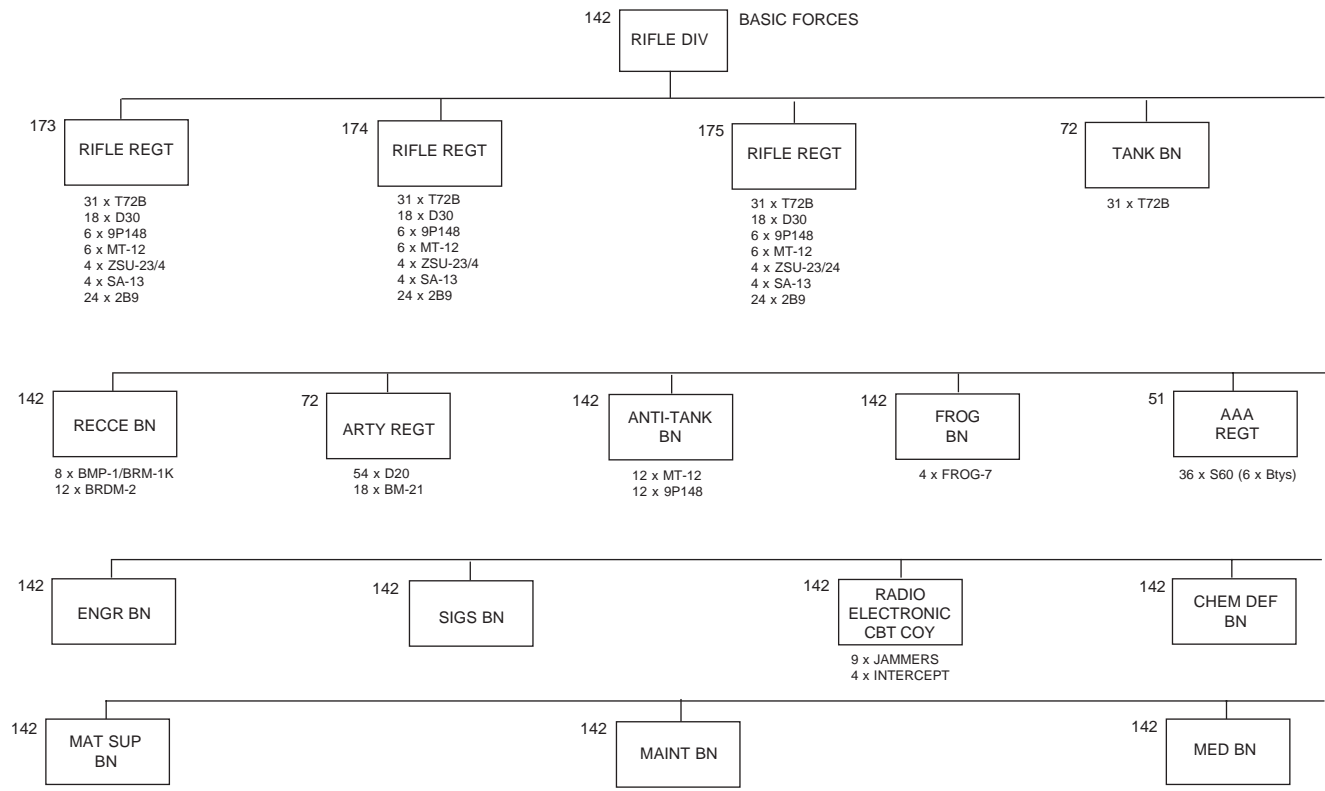


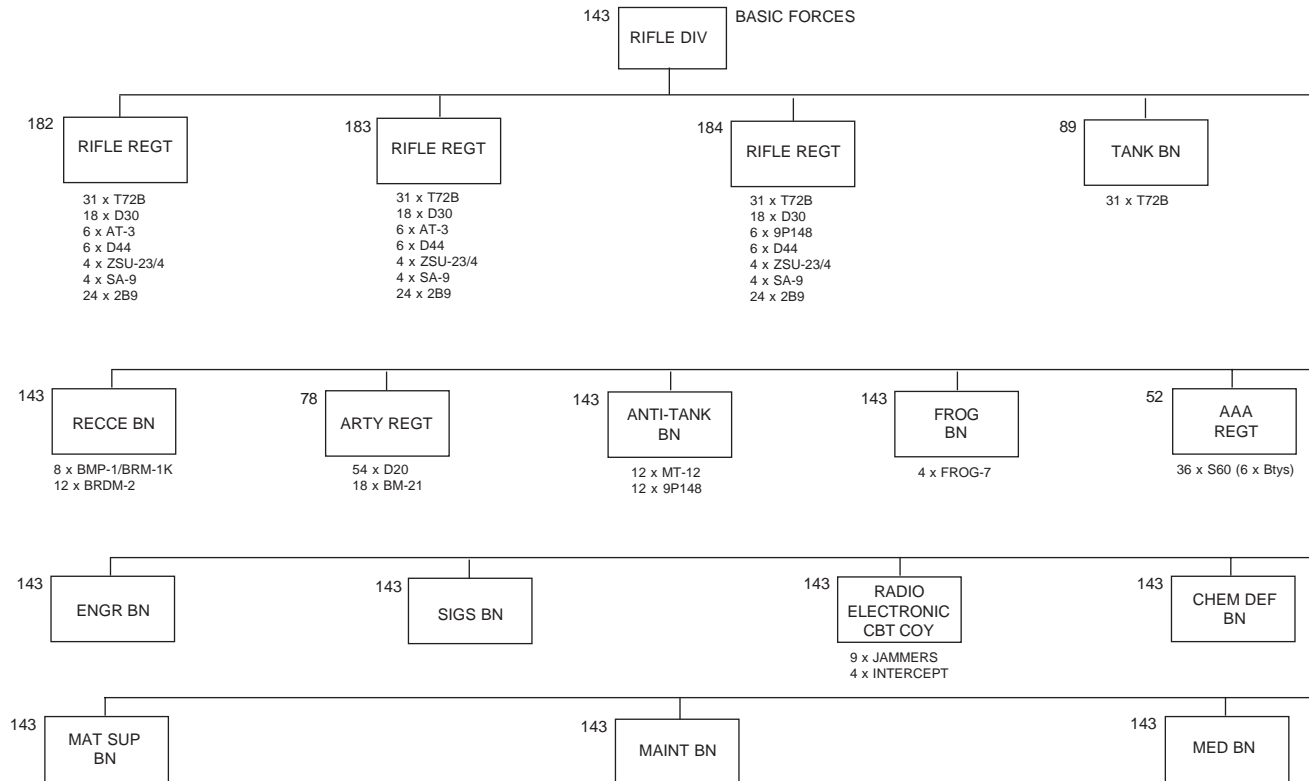


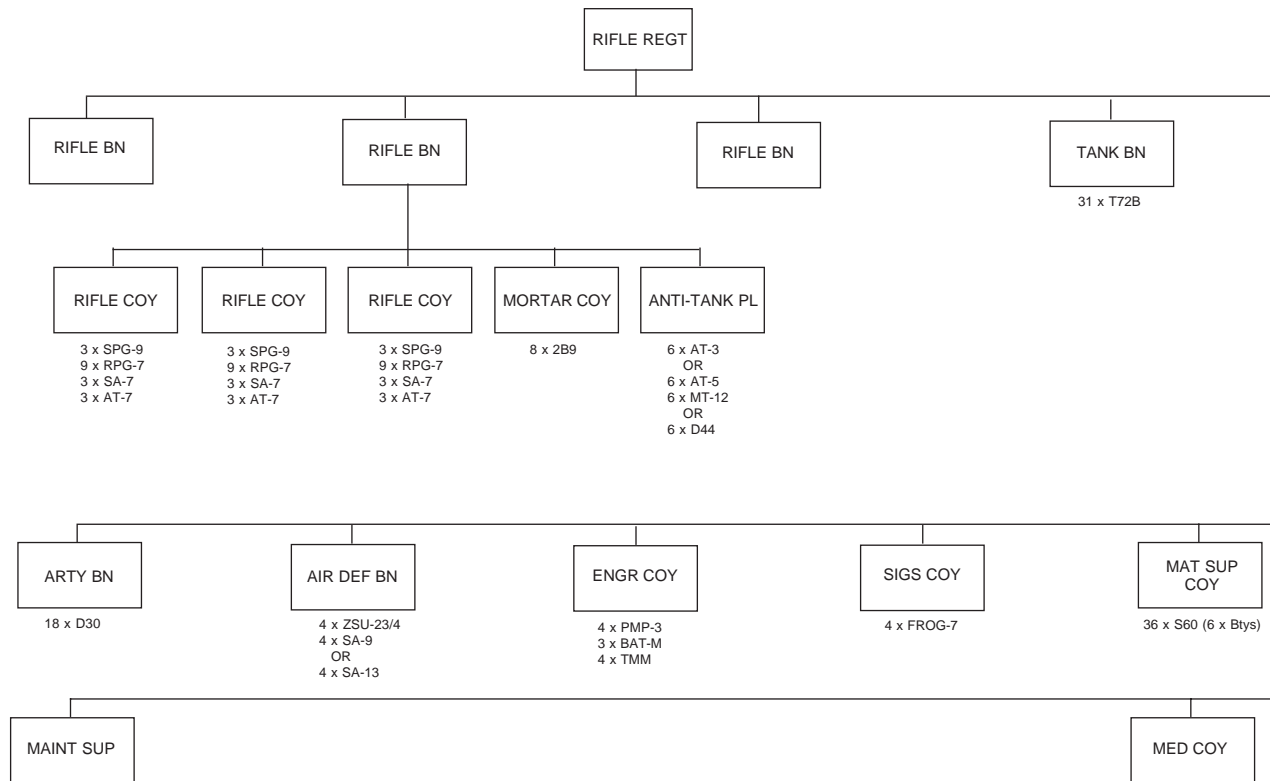












**BASIC FORCES RIFLE REGIMENT**



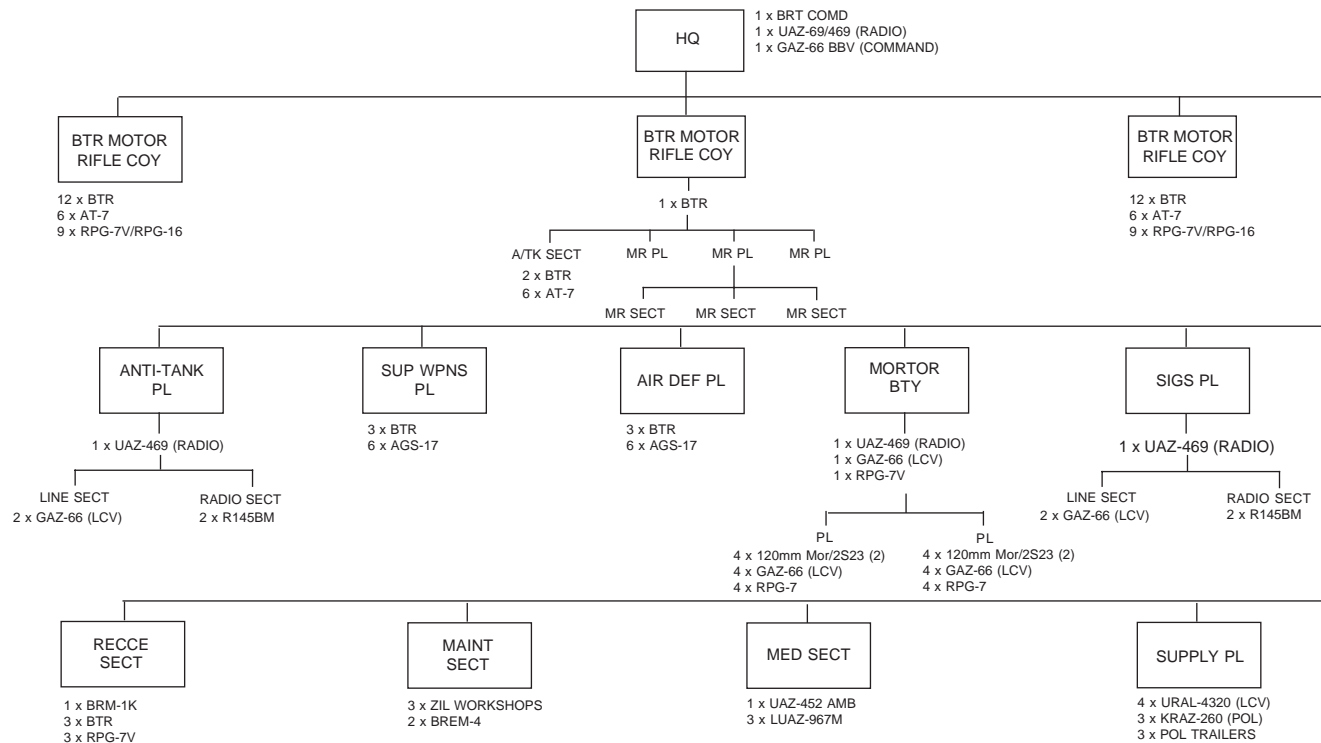
GENFORCE

BASIC FORCES

TABLES OF ORGANIZATION  
&  
EQUIPMENT

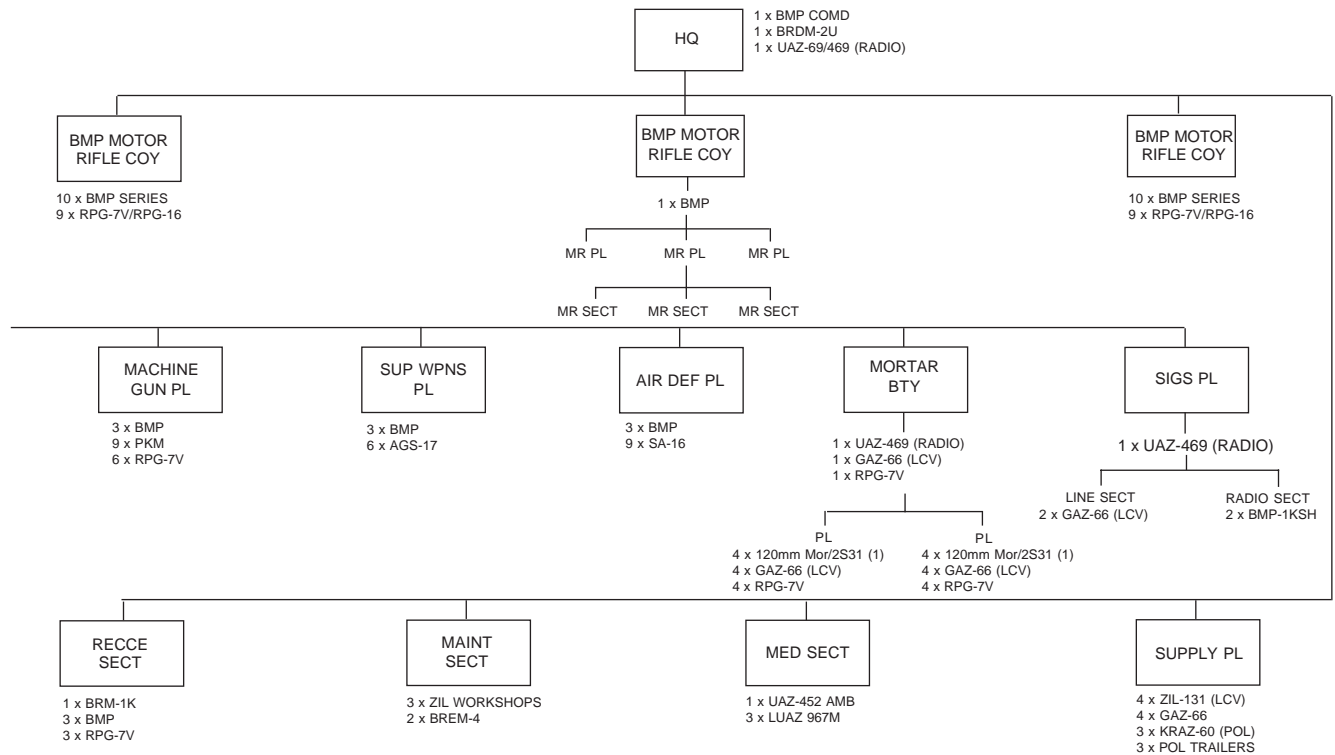
## TABLES OF ORGANISATION AND EQUIPMENT INDEX

- I. INDEX
- II. NOTES TO USERS
01. MOTOR RIFLE BATTALION (BTR EQUIPPED)
02. MOTOR RIFLE BATTALION (BMP EQUIPPED)
03. TANK BATTALION (MOTOR RIFLE REGIMENT)
04. TANK BATTALION (TANK REGIMENT)
05. MOTOR RIFLE REGIMENT (BTR EQUIPPED)
06. MOTOR RIFLE REGIMENT (BMP EQUIPPED)
07. TANK REGIMENT OF A MOTOR RIFLE DIVISION
08. TANK REGIMENT OF A TANK DIVISION
09. MOTOR RIFLE DIVISION
10. TANK DIVISION
11. DIVISIONAL HEADQUARTERS
12. DIVISIONAL INDEPENDENT TANK BATTALION (MOTOR RIFLE DIVISION)
13. DIVISIONAL RECONNAISSANCE BATTALION
14. DIVISIONAL ARTILLERY REGIMENT
15. DIVISIONAL ANTI-TANK BATTALION (MOTOR RIFLE DIVISION)
16. DIVISIONAL AIR DEFENCE REGIMENT (SA-15)
17. DIVISIONAL ENGINEER BATTALION
18. DIVISIONAL SIGNALS BATTALION
19. DIVISIONAL RADIO ELECTRONIC COMBAT COMPANY
20. DIVISIONAL CHEMICAL DEFENCE COMPANY
21. DIVISIONAL MATERIAL SUPPORT BATTALION
22. DIVISIONAL MAINTENANCE BATTALION
23. DIVISIONAL MEDICAL BATTALION



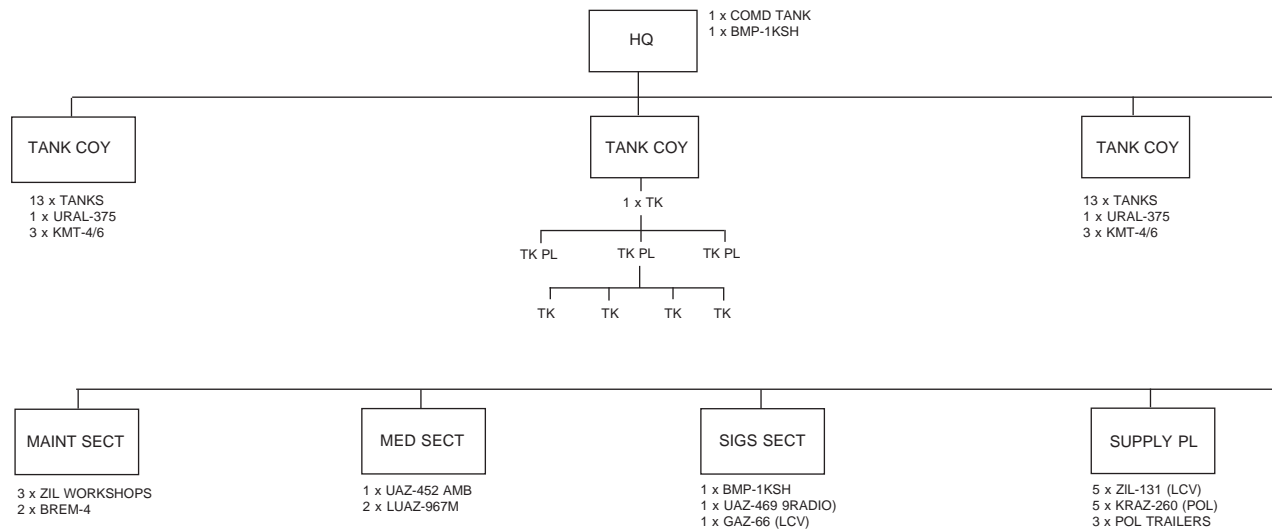
(1) MANPACK  
 (2) WHEN 2S23 IS FOUND IN PL ONLY 2 x GAZ-66 (LCV) AND 2 x RPG-7V IN EACH PL

**MOTOR RIFLE BATTALION (BTR EQUIPPED)**

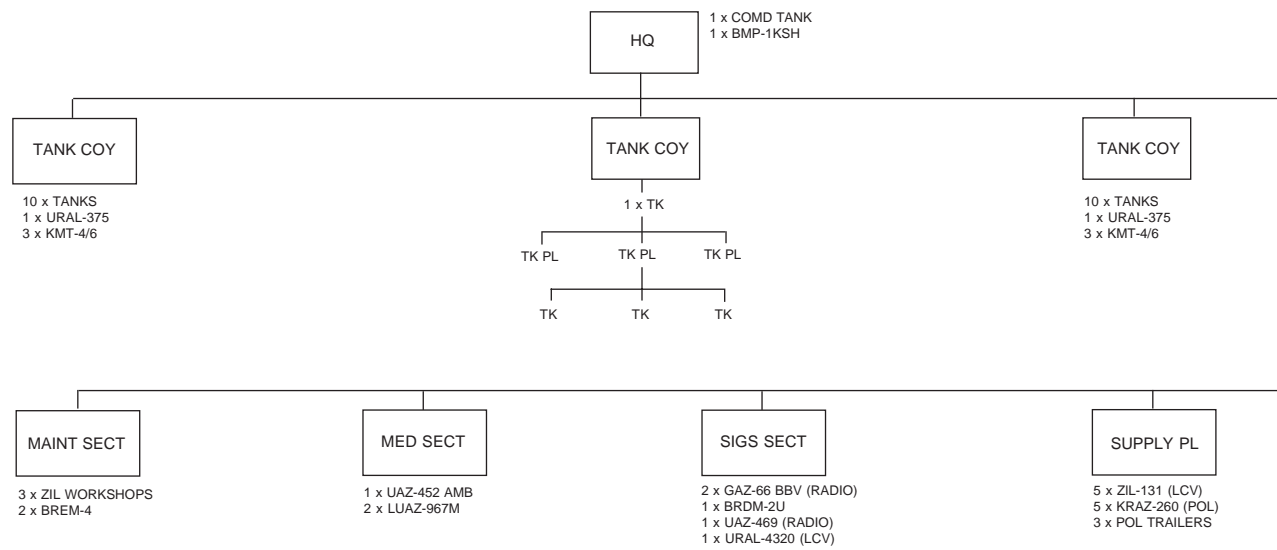


(1) WHEN 2S31 IS FIELDIED, ONLY 2 x GAZ-66 (LCV) AND 2 x RPG-7V IN EACH PL

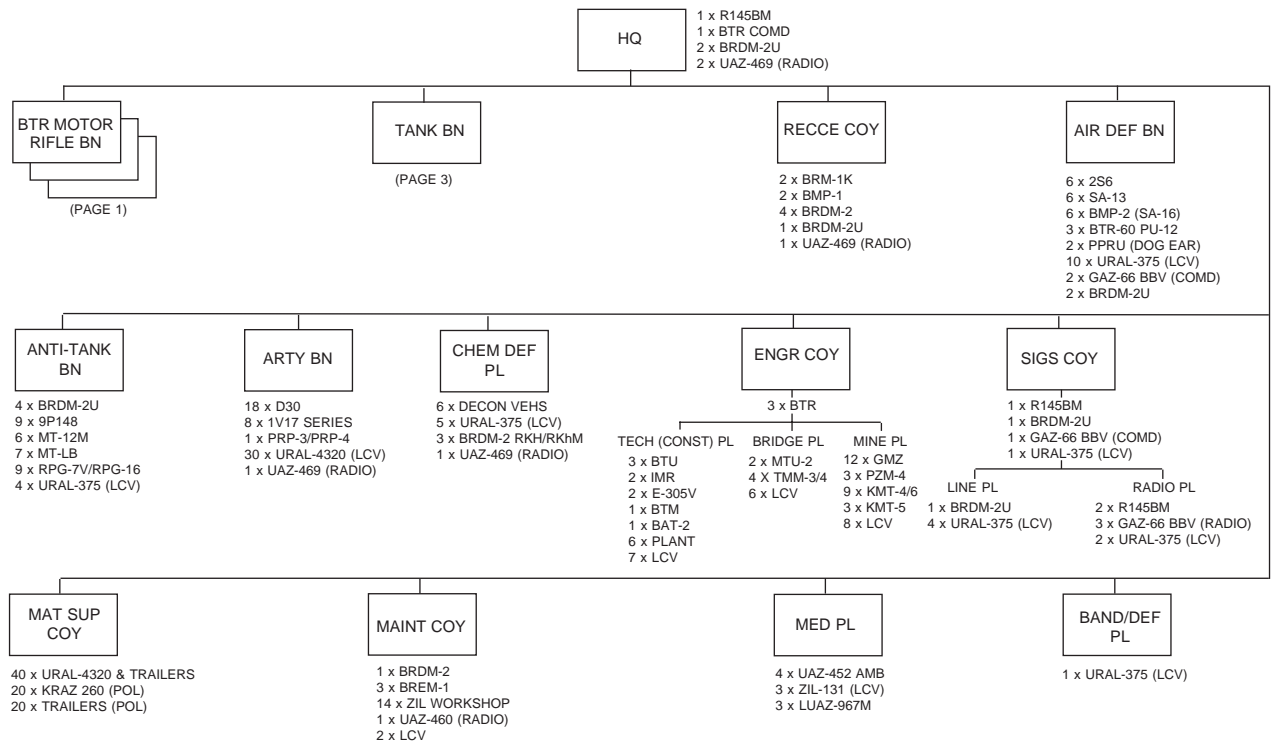
**MOTOR RIFLE BATTALION (BMP EQUIPPED)**



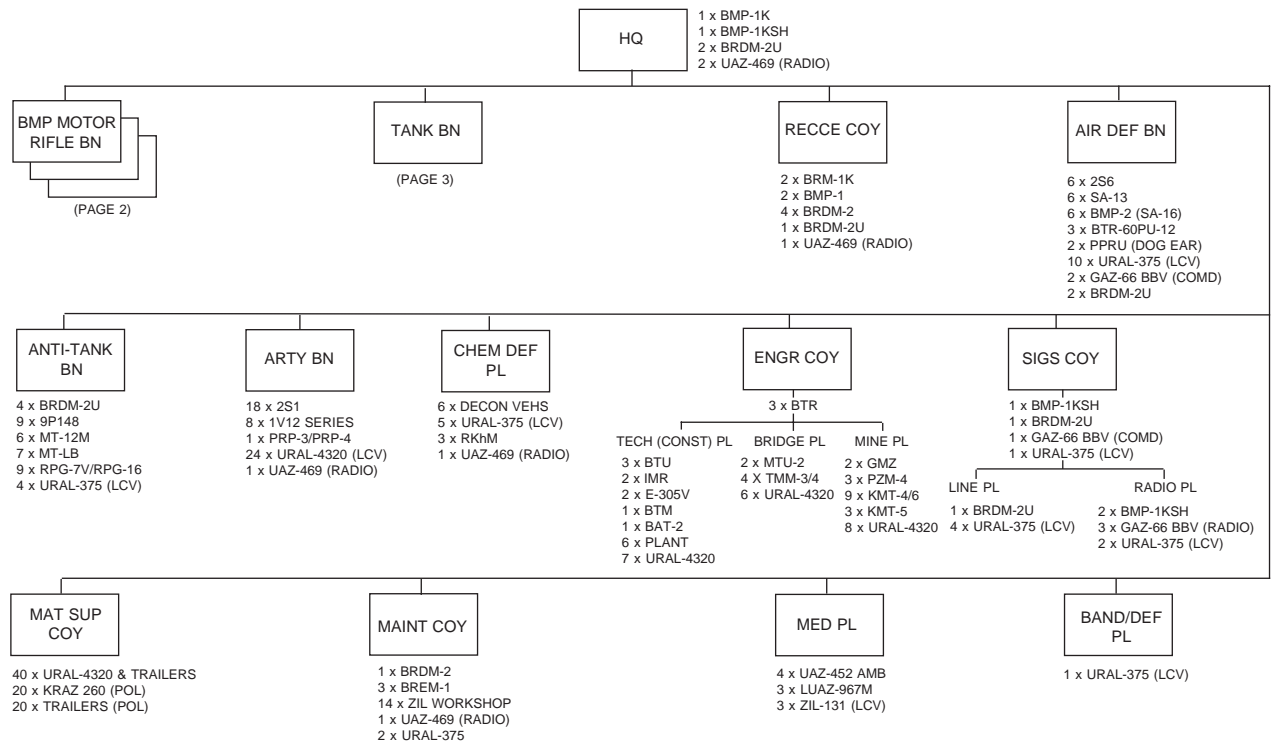
**TANK BATTALION (MOTOR RIFLE REGT)**



**TANK BATTALION (TANK REGT)**

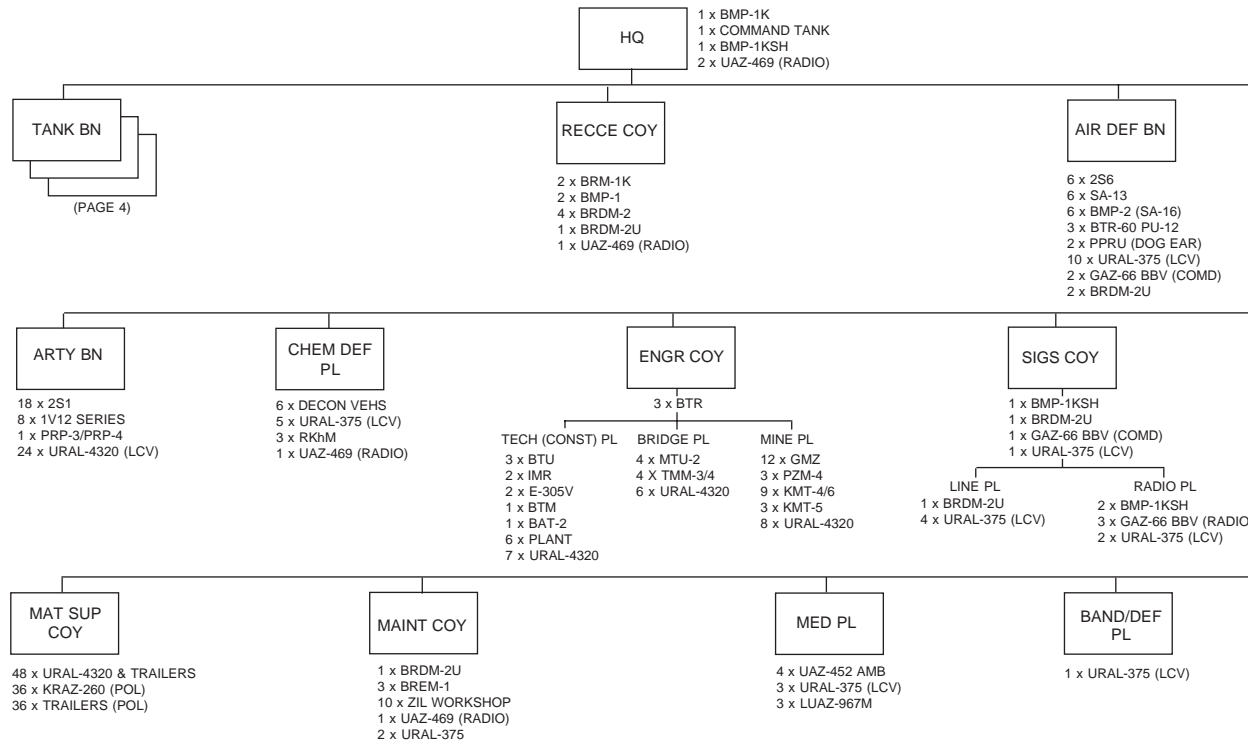


**MOTOR RIFLE REGIMENT (BTR EQUIPPED)**

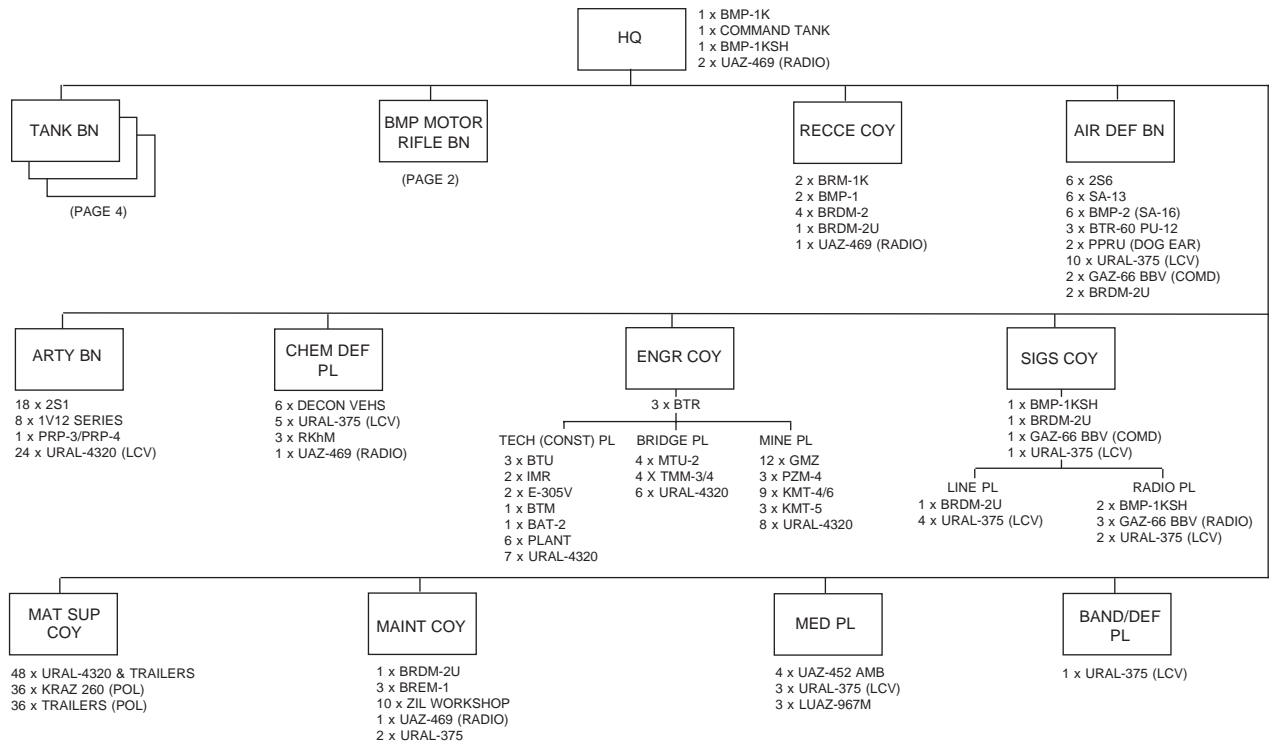


**MOTOR RIFLE REGIMENT (BMP EQUIPPED)**

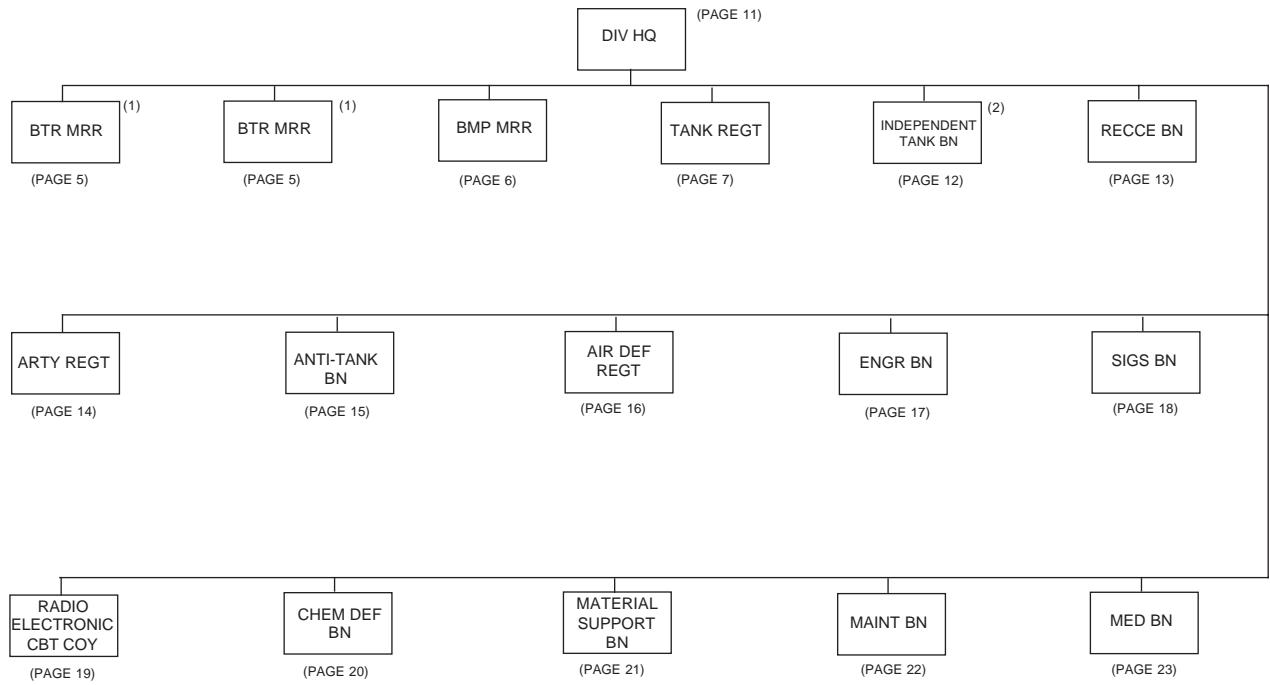




**TANK REGIMENT (MOTOR RIFLE DIV)**

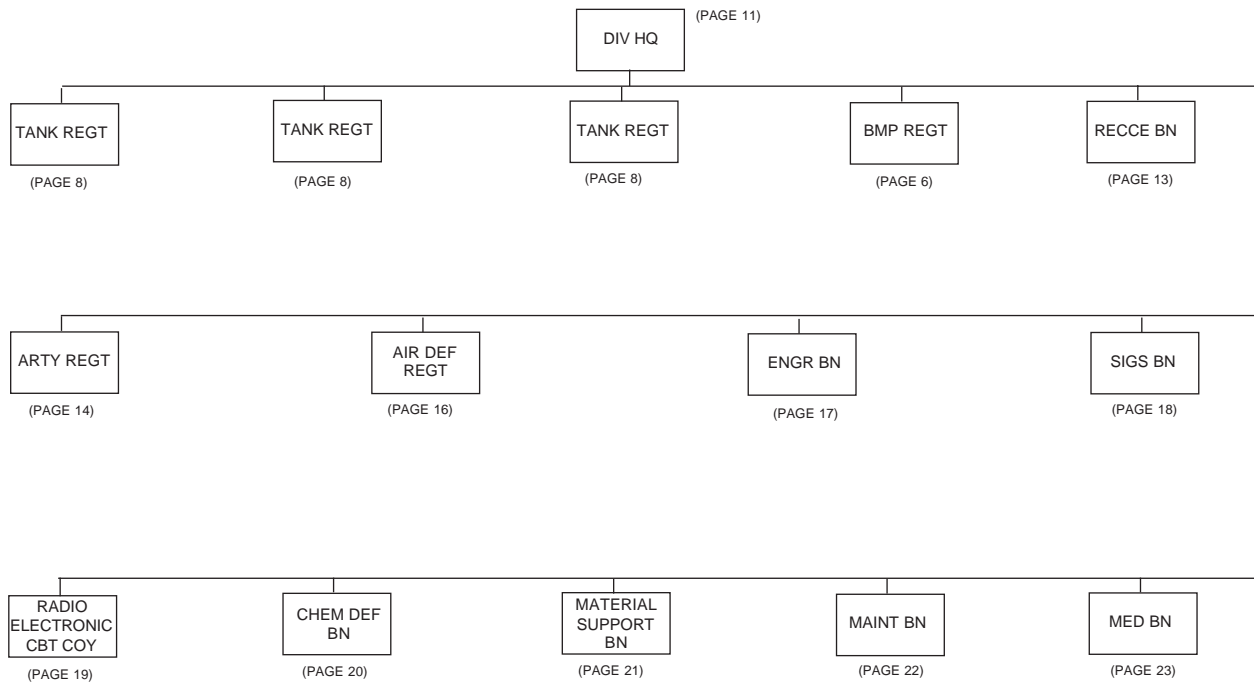


**TANK REGIMENT (TANK DIVISION)**

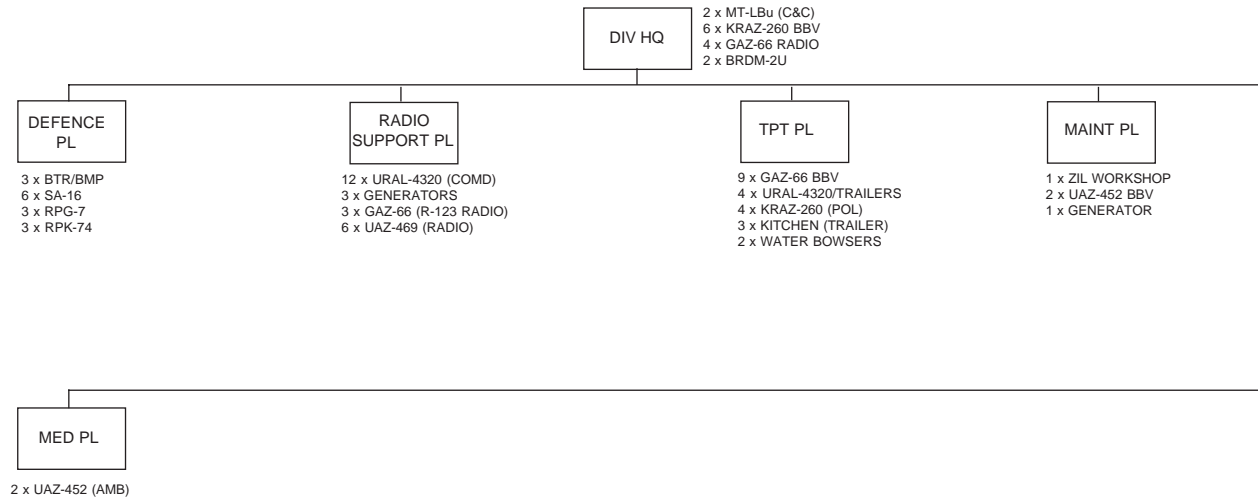


- (1) SOME DIVISIONS COULD HAVE 2 BMP AND 1 BTR REGT.
- (2) NOT ALL DIVISIONS HAVE AN INDEPENDENT TANK BN.

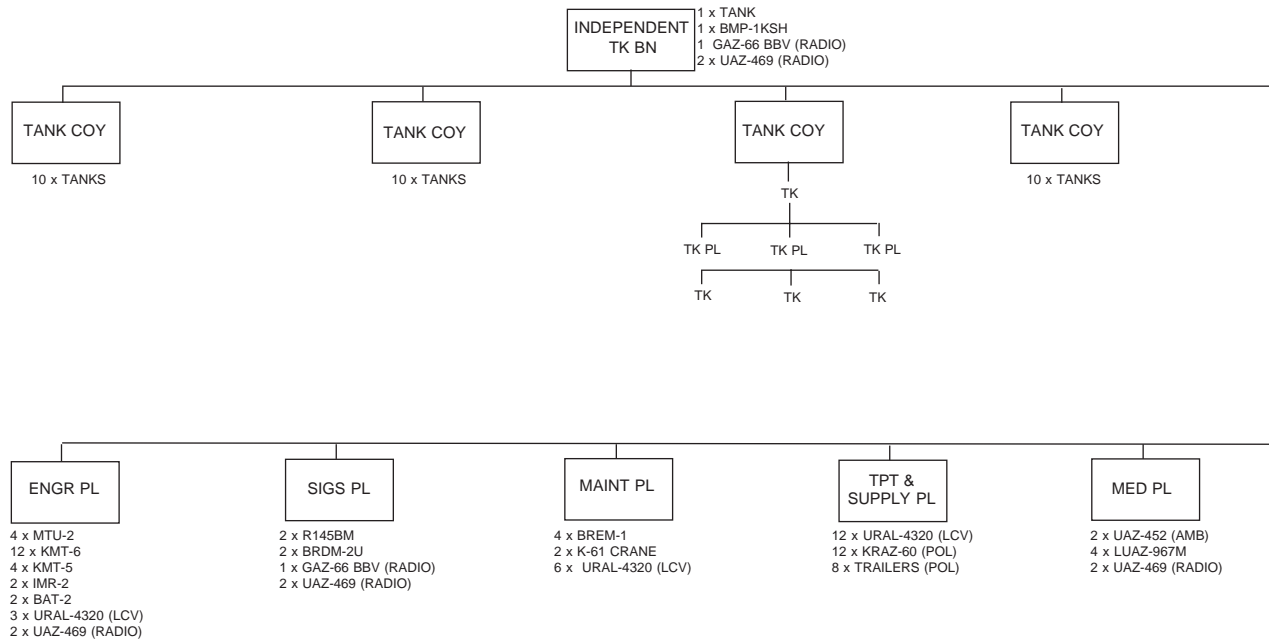
**MOTOR RIFLE DIVISION**



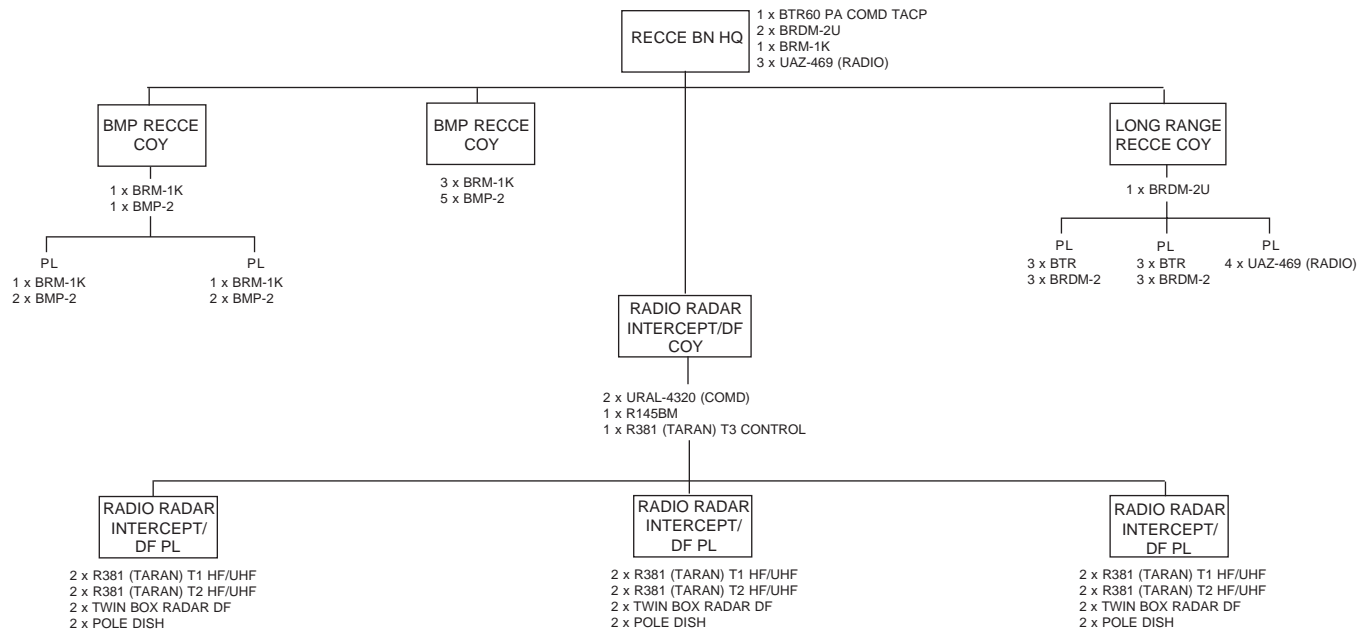
**TANK DIVISION**



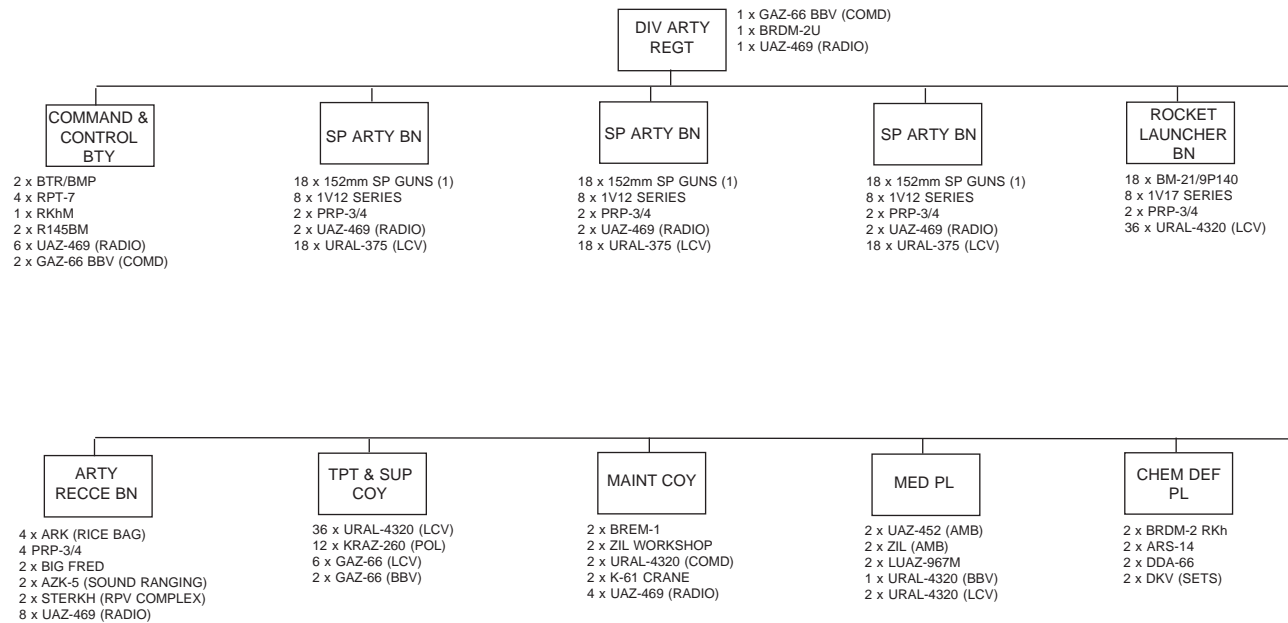
**DIVISIONAL HEADQUARTERS**



**INDEPENDENT TANK BATTALION (MOTOR RIFLE DIVISION)**



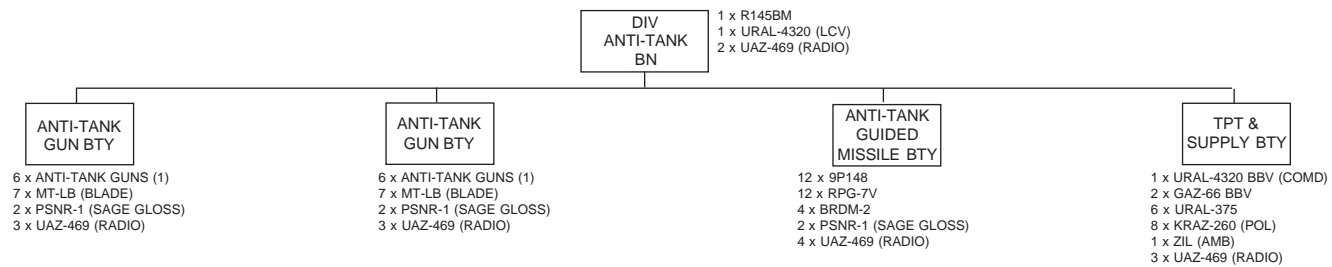
**DIVISIONAL RECONNAISSANCE BATTALION**



(1) GUNS CAN BE 2S3 OR 2S19

**DIVISIONAL ARTILLERY REGIMENT**

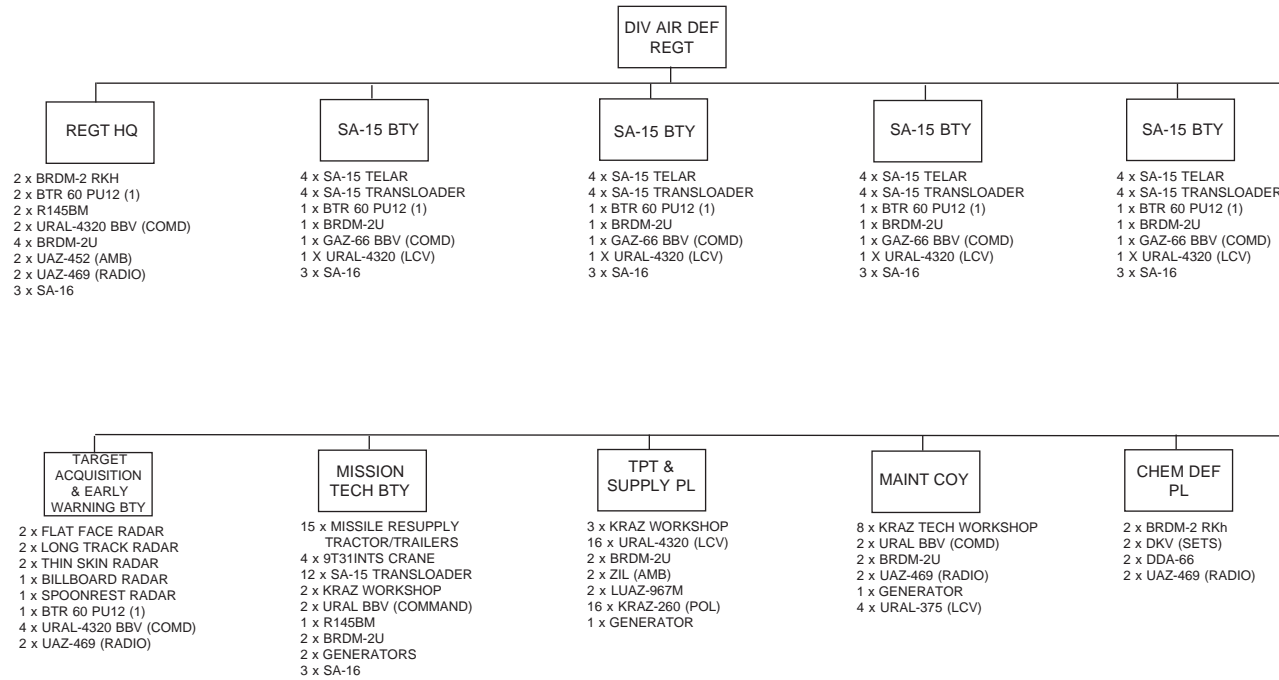




(1) GUNS CAN BE:

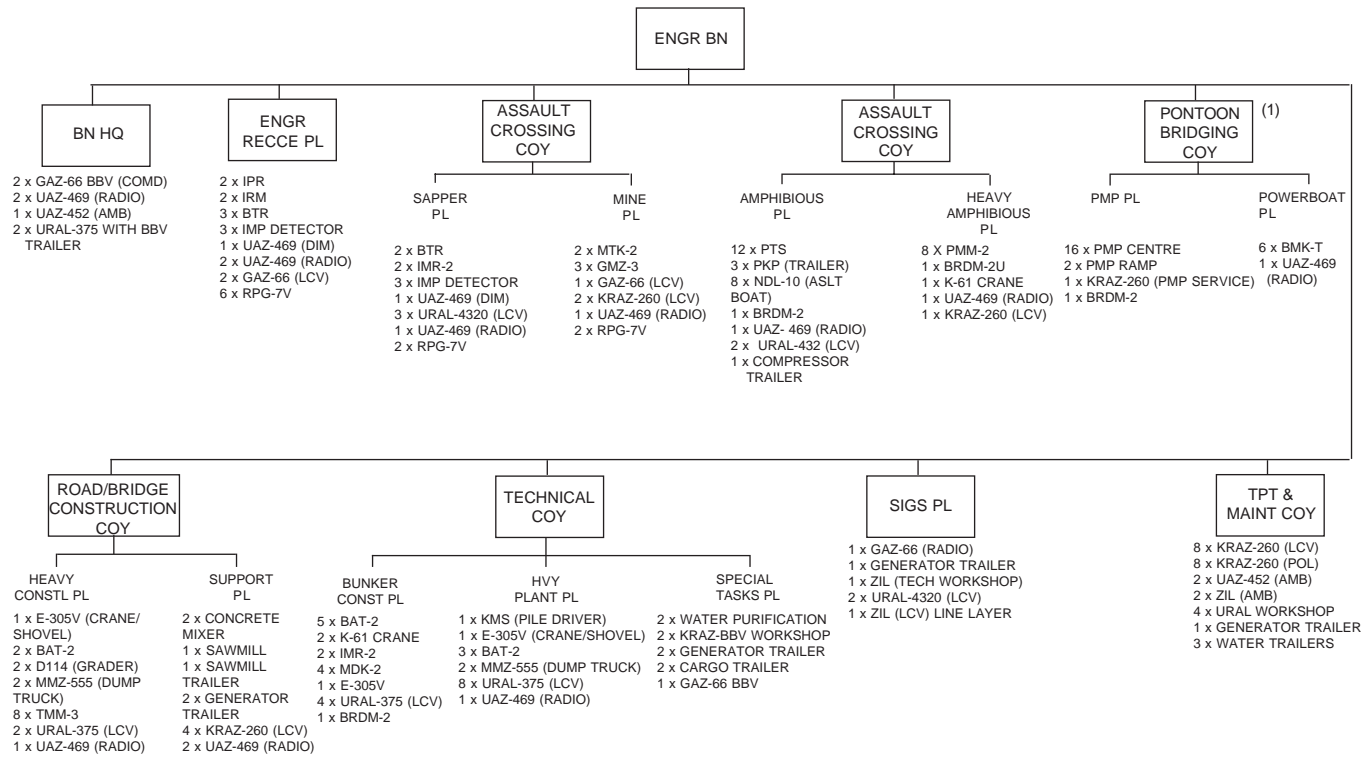
MT-12: 100mm ANTI-TANK GUN  
 MT-12M: 100mm AS ABOVE WITH ATGM CAPABILITY  
 2A45M: 125mm ANTI-TANK GUN WITH A TGM CAPABILITY

## DIVISIONAL ANTI-TANK BATTALION



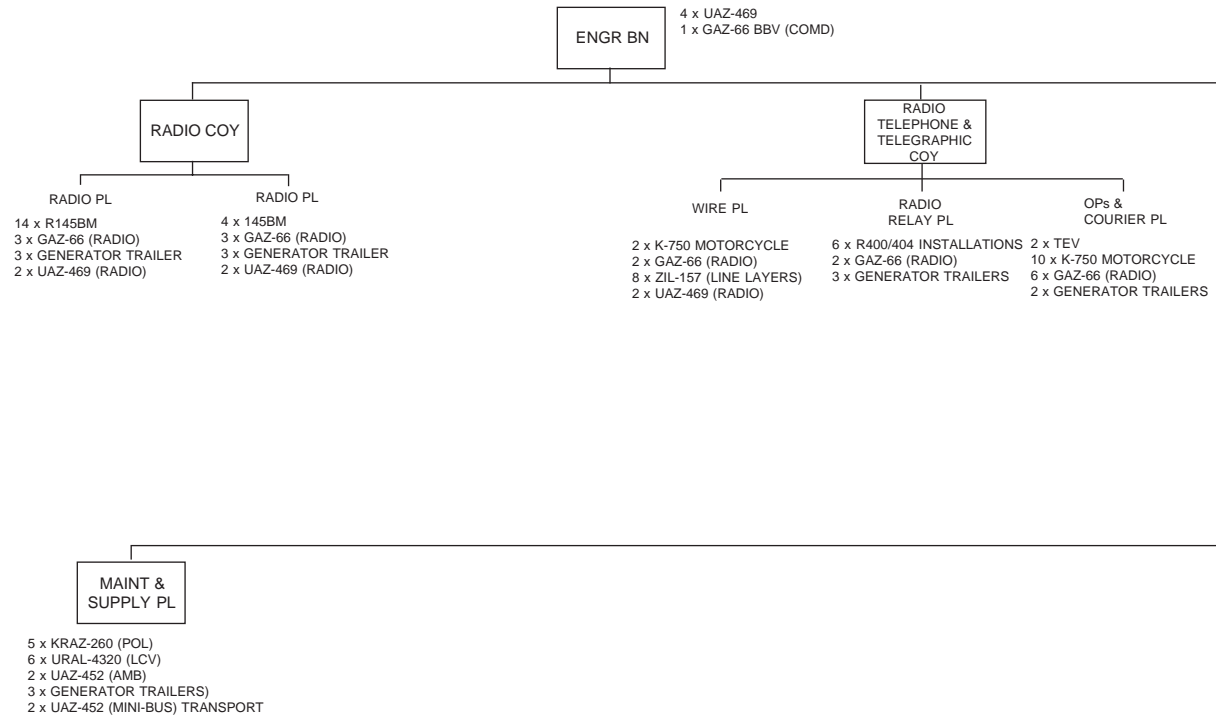
(1) BTR 60 PU12 OR MT-LBu AIR DEF CONTROL

**DIVISIONAL AIR DEFENCE REGIMENT**

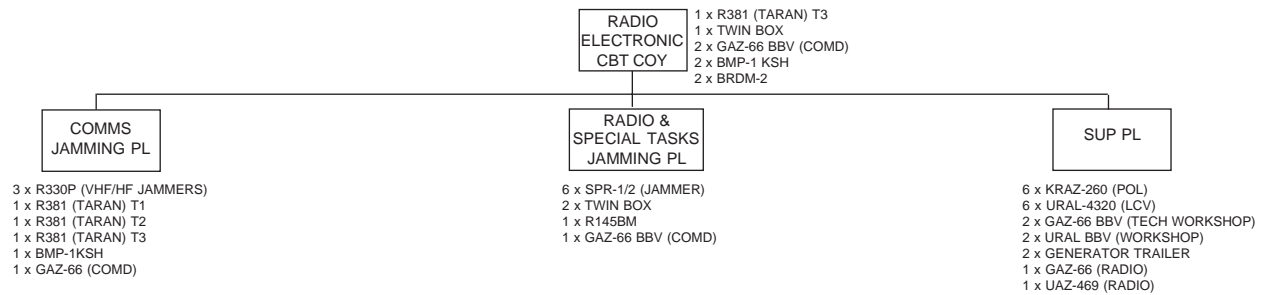


(1) SOME DIV ENGR BNs MAY HAVE 2 x PONTOON BRIDGING COYS.

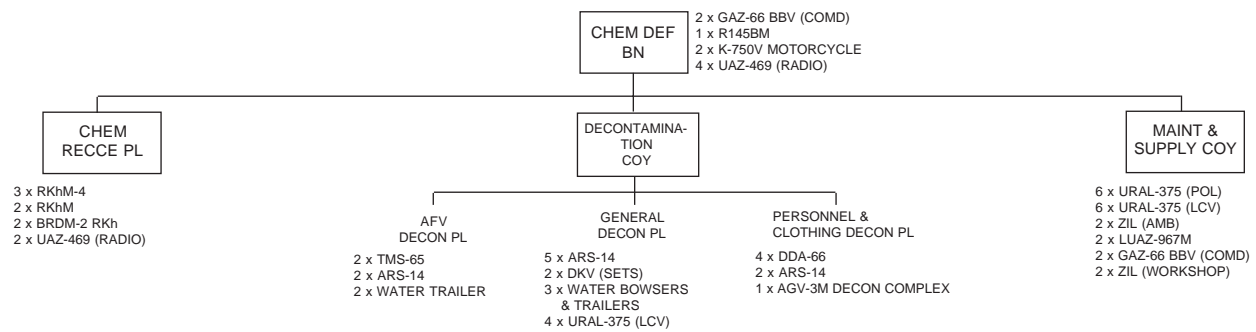
**DIVISIONAL ENGINEER BATTALION**



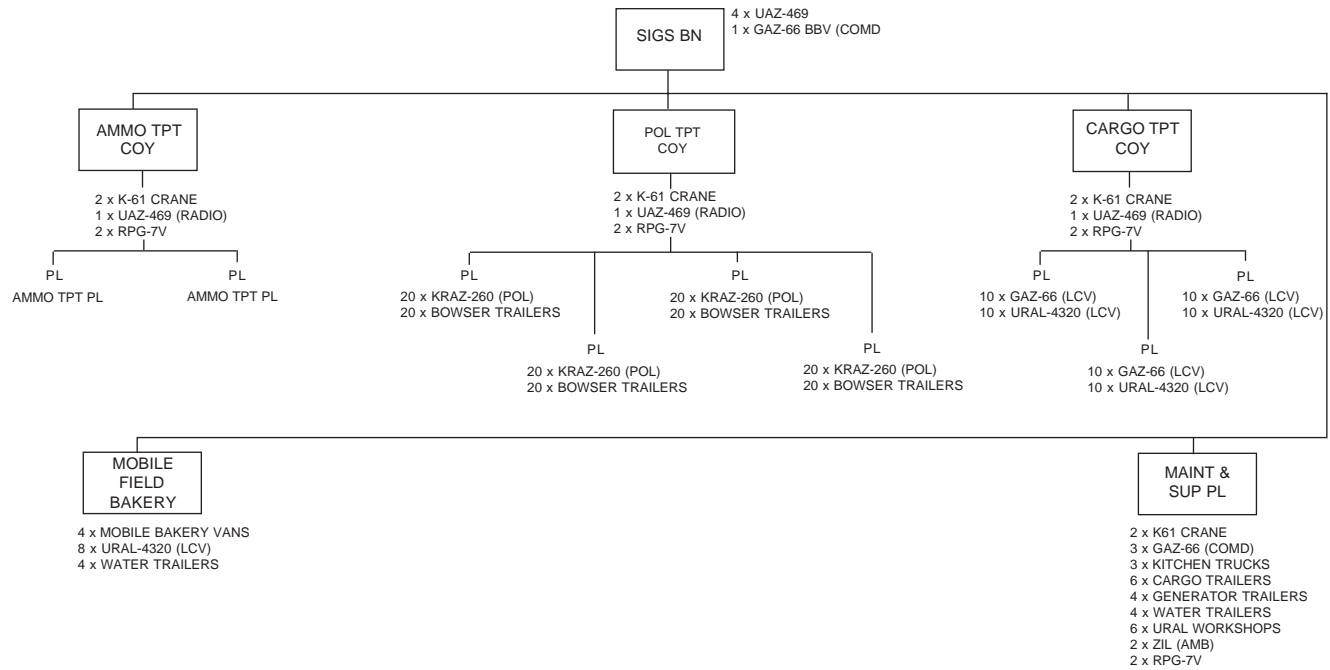
**DIVISIONAL SIGNAL BATTALION**



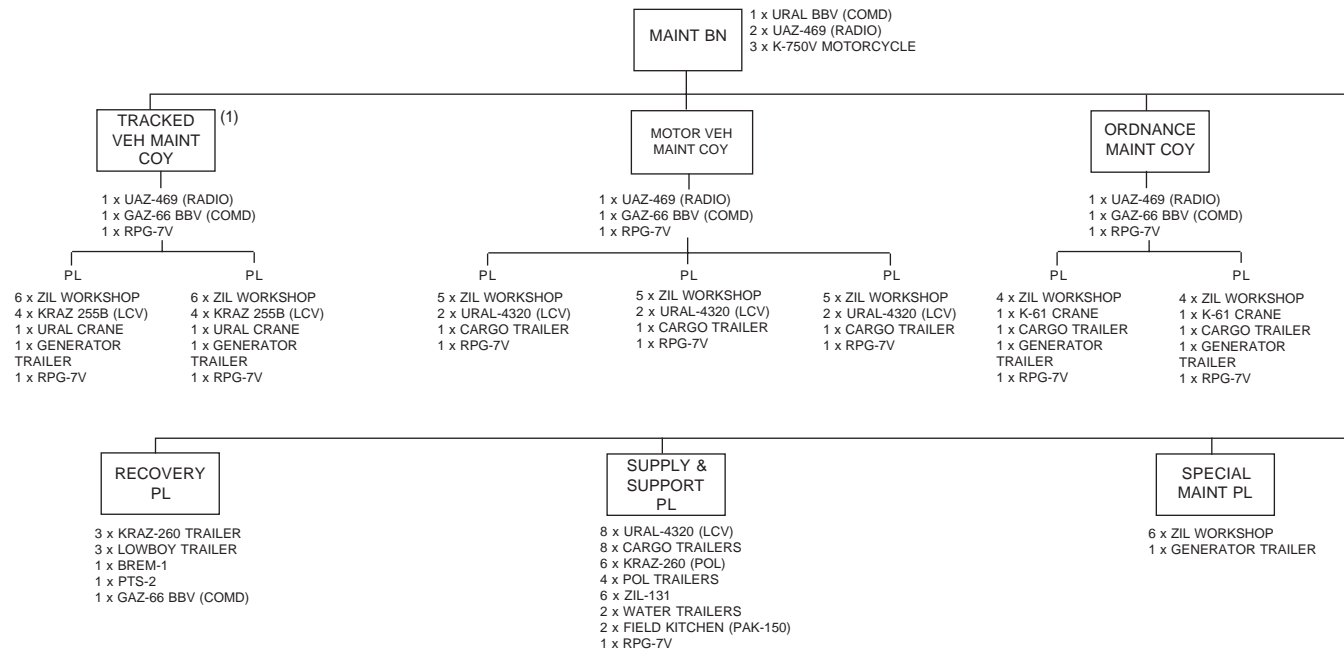
**DIVISIONAL RADIO ELECTRONIC COMBAT COMPANY**



**DIVISIONAL CHEMICAL DEFENCE BATTALION**



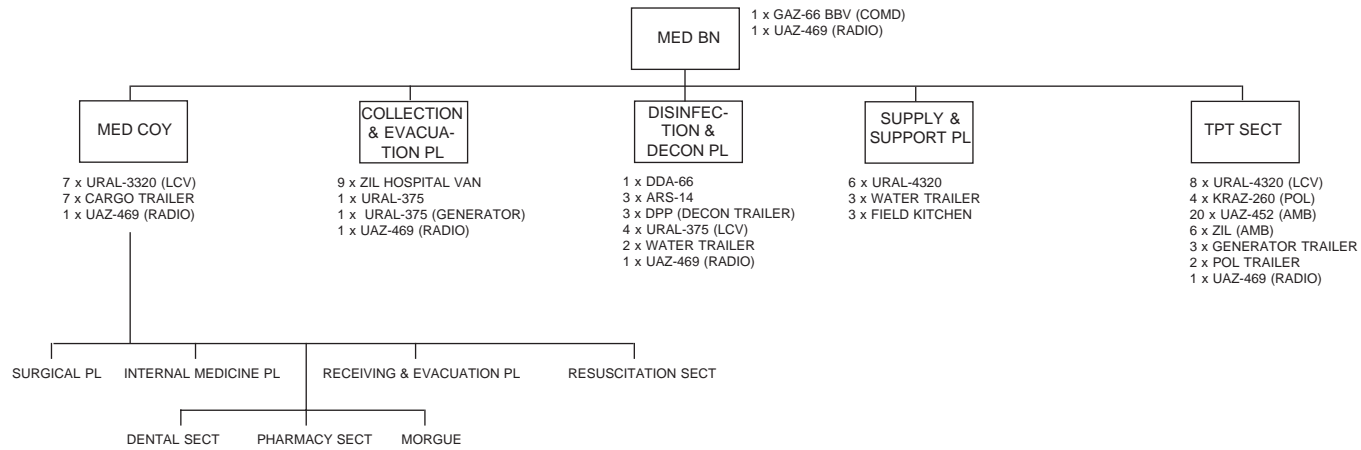
**DIVISIONAL MATERIAL SUPPORT BATTALION**



(1) THIS COMPANY HAS 2 PLATOONS WHEN ORGANIC TO A MRD AND 3 PLATOONS WHEN ORGANIC TO A TK DIV.

## DIVISIONAL MAINTENANCE BATTALION





**DIVISIONAL MEDICAL BATTALION**

## INDEX OF GENFORCE EQUIPMENT

<b>Equipment/Vehicle/Weapon System</b>	<b>Section Reference</b>
RECONNAISSANCE VEHICLES	1-1
ARMOURED FIGHTING VEHICLES	2-1 to 2-2
TANKS	3-1
RIVER CROSSING EQUIPMENT	4-1 to 4-3
MINELAYERS	5-1
MINE CLEARERS	6-1 to 6-2
AIRCRAFT	7-1 to 7-3
HELICOPTERS	8-1 to 8-4
MULTIBARRELLED ROCKET LAUNCHERS	9-1 to 9-2
RADARS	10-1 to 10-2
ANTI-AIRCRAFT ARTILLERY	11-1
FIELD ARTILLERY (TOWED)	12-1 to 12-3
FIELD ARTILLERY (SELF-PROPELLED)	13-1 to 13-2

ANTI-TANK MISSILES	14-1 to 14-2
ANTI-TANK GUNS	15-1
SURFACE-TO-SURFACE MISSILES	16-1
ENGINEERING EQUIPMENT	17-1 to 17-3
ELECTRONIC WARFARE PLATFORMS	18-1
EW - COMINT	19-1
DF	20-1
JAMMING	21-1
ELINT	22-1
SURFACE-TO-AIR MISSILES	23-1 to 23-3
COMMAND VEHICLES	24-1 to 24-3
SUPPORT VEHICLES	25-1 to 25-3
INFANTRY WEAPONS	26-1
STANOC EQUIPMENT	27-1
CHEMICAL DEFENCE	28-1
ALPHABETICAL LISTING OF ALL GENFORCE EQUIPMENT	29-1 to 29-44

## RECONNAISSANCE VEHICLES

Name	Classification	Tracked/Wheeled	Armament (mm)	Operating Range (km)	Crew	Combat Weight (Kg)
BRDM-1	RECCE	Wheeled	1 x 14.5MG/1 x 7.62MG			
BRDM-2	RECCE	Wheeled	1 x 14.5/1 x 7.62	750	4	7,000
BRM-1K	RECCE	Tracked	1 x 73 Gun/1 x 7.62 Coax	500	6	13,500
EE-11	RECCE	Tracked	1 x 12.7	850	1 + 12	14,000
EE-3	RECCE	Wheeled	1 x 12.7	700	3	5800
EE-9	RECCE	Wheeled	1 x 12.7/1 x 7.62	880	3	13,400
FERRET	RECCE	Wheeled	1 x 7.62	306	2	4,725
IPR	RECCE	Tracked (Snorkel)	1 x 7.62	520	4	17,000
IRM	RECCE	Tracked	1 x 7.62	520	4	17,000
M1068 (M113)	RECCE	Tracked	1 x 12.7/1 x 7.62	500	5	11,709
M8 (GREYHOUND)	RECCE	Wheeled	1 x 37/1 x 7.62 Coax/1 x 12.7AA	560	4	7,892
MAMBA II	RECCE	Wheeled	1 x 7.62	750	2	6,500
V600	RECCE	Wheeled	1 x 105/2 x 7.62	600	4	18,500

## ARMoured FIGHTING VEHICLES

Name	Classification	Wheeled	Armament (mm)	Operating Range	Crew	Weight (Kg)	Road Speed (Kph)
BMD	AFV	Tracked	1 x 73 Gun/1 x 7.62 Coax MG 2 x 7.62 MG (Bow) 1 x AT-3 or AT-4 ATGM	320	3 + 4	7,500	70
BMD-2	AFV	Tracked	1 x 30 Cannon/ 1 x 7.62 Coax /1 x 7.62 (Bow)/1 x AT-4 ATGM	320	3 + 4	7,500	70
BMP-1	AFV	Tracked	1 x 73/1 x 7.62	500	3	13,500	80
BMP-2	AFV	Tracked	1 x 30/1 x 7.62/AT-4/5	600	3	14,300	65
BMP-3	AFV	Tracked	1 x 100/1 x 30/3 x 7.62/6 x AT10	600	3	18,700	70
BTR-60PB	AFV	Wheeled	1 x 14.5/1 x 7.62	500	2	10,300	80
BTR-D	AFV	Tracked	2 x 7.62	320	1 + 9	7,500	70
BTR70	AFV	Wheeled	1 x 14.5/1 x 7.62	500	2	11,500	80
BTR80	AFV	Wheeled	1 x 14.5/1 x 7.62	500	2	13,600	80

<b>Name</b>	<b>Classification</b>	<b>Wheeled</b>	<b>Armament (mm)</b>	<b>Operating Range</b>	<b>Crew</b>	<b>Weight (Kg)</b>	<b>Road Speed (Kph)</b>
M113	AFV	Tracked	1 x 12.7/1 x 7.62	497	5	11,709	62.8
M113 A-1	AFV	Tracked	1 x 25 Cannon/1 x 7.62	497	2	(11,500)	65
M113 A2	AFV	Tracked	1 x 12.7/1 x 7.62	483	2	11,341	67.9
MT-LB	AFV	Tracked	1 x 7.62	500	2	11,900	61.5
OT-64C (1)	AFV	Wheeled	1 x 14.5/1 x 7.62	710	2 + 15	14,500	94.4
V150	AFV	Wheeled	1 x 20/2 x 7.62	800	3	9,888	100
YW-531	AFV	Tracked	1 x 12.7	500	2	12,600	65

## TANKS

Name	Classification	Armament (mm)	Munitions	Crew	Weight (Kg)
M1 A2	TANK	1 x 120 gun/1 x 7.62	KE/HE/APFSDS-T/HEAT-MP-T	4	54,545
M48	TANK	1 x 90/1 x 12.7	HE, HEAT, Smoke	6	44,906
M48 A3	TANK	1 x 90/1 x 12.7/1 x 7.62	APERS-T, APC-T, AP-T, HE-T	4	47,173
M48 A5	TANK	1 x 105/3 x 7.62	As M48 A3	4	48,987
M60 A1	TANK	1 x 105/1 x 12.7/1 x 7.62	APFSDS-T/APERS/TPDS/HEP-T	4	52,617
T-55	TANK	1 x 100/1 x 12.7/1 x 7.62	HE, HEAT, HVAP	4	36,000
T-72	TANK	1 x 125/1 x 12.7/1 x 7.62	HE, HEAT, APFSDS-T	3	44,500
T-72 B	TANK	1 x 125/1 x 12.7/1 x 7.62	HE, HEAT, APFSDS-T	3	44,500
T-80	TANK	1 x 125/Missile Launcher/1 x 12.7/ 1 x 7.62	HE, HEAT, APFSDS-T	3	46,000
Type 69	TANK	1 x 100/1 x 12.7/2 x 7.62	HE, HEAT, APHE, APFSDS	4	36,500
Type 69 II	TANK	1 x 100/1 x 12.7/2 x 7.62	As Type 69	4	37,000
Type 80	TANK	1 x 105/1 x 7.62 Coax	APFSDS-T/HEAT-T/HESH/HE	4	38,000

## RIVER CROSSING EQUIPMENT

Name	Classification	Type	Span (m)	Width (m)	Assembly Time	Capacity (kg)	Crew	Platform
BMK-130/150	RIVER CROSSING	Boat	N/A	N/A	N/A	N/A	2	N/A
BMK-70/90	RIVER CROSSING	Boat	N/A	N/A	N/A	N/A	2	N/A
BMK-T	RIVER CROSSING	Boat	N/A	N/A	N/A	N/A	2	Carried on KrAZ-255B
DL-10	RIVER CROSSING	Boat	N/A	N/A	N/A	N/A	1	N/A
DPP-40	RIVER CROSSING	Bridge	N/K	N/K	N/K	N/K	N/K	Air portable
GSP	RIVER CROSSING	Ferry	12m Long	12.63	N/K	52,000	Working Party=6	Amphibious Tracked
K-61	RIVER CROSSING	Ferry	9.15m Long	3.15	N/A	14,450	1 + 1	Amphibious Tracked
KMM	RIVER CROSSING	Bridge	34	2.95	45-60 mins	15,000	1+2	ZIL-157 truck
MT-55	RIVER CROSSING	Bridge	18	3.3	2-3 mins	50,000	2	T-55 chassis
MTU-1	RIVER CROSSING	Bridge	11	3.27	3-5 mins	50,000	2	T-54 chassis
MTU-20	RIVER CROSSING	Bridge	18	3.3	5	60,000	2	T-55 chassis



Name	Classification	Type	Span (m)	Width (m)	Assembly Time	Capacity (kg)	Crew	Platform
MTU-30	RIVER CROSSING	Bridge	30	(4)	5-6	60,000	3	T-72 Chassis
MTU-72	RIVER CROSSING	Bridge	18	3.3	3 mins	50,000	2	T-72 Chassis
NZhM-56	RIVER CROSSING	Bridge	25.7 (Est)	2.4 (Est)	Variable	40,000	100+	ZIL-131/157
PKP	RIVER CROSSING	Trailer	N/A	N/A	N/A	N/A	N/A	PTS Towed
PMM-2	RIVER CROSSING	Bridge	17-20	9.9	1 min	50,000	3-5	N/A
PMP	RIVER CROSSING	Pontoon Bridge	119 (Max)	5.75/7.1	Variable	60,000	65-130	KrAZ-255B
PPS	RIVER CROSSING	Bridge	23	6	Variable	60,000	65-130	ZIL-151
PTS	RIVER CROSSING	Ferry	N/A	N/A	N/A	5,000=Land 10,000=Water	1 + 1	N/A
PTS-2	RIVER CROSSING	Ferry	N/A	N/A	N/A	5,000=Land 10,000=Water	1 + 1	N/A
RMM-4	RIVER CROSSING	Bridge	16-34	3-4	120-150	16,000-60,000	N/A	12 x GAZ-63
SARM	RIVER CROSSING	Bridge	18.6/25.6 and 32.6 Sections	4.2-7.2	158 Bridge= 24 hours	40,000-60,000	N/A	ZIL-130V Towed

<b>Name</b>	<b>Classification</b>	<b>Type</b>	<b>Span (m)</b>	<b>Width (m)</b>	<b>Assembly Time</b>	<b>Capacity (kg)</b>	<b>Crew</b>	<b>Platform</b>
TMM	RIVER CROSSING	Bridge	40	3.8	45-60 mins	60,000	3	KrAZ 215/ 255B

## MINELAYERS

Name	Classification	Tracked Wheeled	Armament	Platform	Load	Crew
GMZ-3	MINELAYER	Tracked	1 x 14.5MG	Ganef chassis (SA-4)	208 mins	3
MLG-60	MINELAYER	Wheeled	N/A	Towed by BTR-152 or (6x6) Truck	200 mines	2
PMR-2/3	MINELAYER	Wheeled	N/A	Towed by BTR-152 or (6x6) Truck	200 mines	4
PMR-3	MINELAYER	Wheeled	N/A	Single axle trailer. Towed by BTR-152	120 A/Tk mines	4
PMZ-4	MINELAYER	Wheeled	N/A	Single axle trailer	200 mines	4

## MINE CLEARERS

Name	Classification	Platform/Role	Max Detection/ Clearance Depth (mm)	Crew
DIM	MINECLEARER	UAZ-69 Mine Detector	250	2
IMP/IMP-2	MINECLEARER	Transistorized Manportable Detector	80-600	1
KMT-5	MINECLEARER	Tank fit Mine Plough and Roller	Surface only	N/A
KMT-6	MINECLEARER	Tank fit Mine Plough	(350)	N/A
KMT-7	MINECLEARER	Tank fit Mine Roller	Surface only	N/A
KMT-8	MINECLEARER	BMP fit Mine Plough	150	N/A
MTK	MINECLEARER	Mine Clearing Explosive Hose	170 m Clearance	2

Name	Classification	Platform/Role	Max Detection/ Clearance Depth (mm)	Crew
MTK-2	MINECLEARER	Mine Clearing Explosive Hose	170m Clearance	2
UR-77	MINECLEARER	Mine Clearing Explosive Hose (Pod only)	170m Clearance	N/A

## AIRCRAFT

Name	Classification	Role	Armament (mm)	Payload	Range	NATO Codename
AN-12 (CUB)	AIRPLANE	Medium Transport	2 x 23mm Cannon	20,000kg	5,500	CUB
AN-24 (COKE)	AIRPLANE	Civil Airliner	N/A	5,500kg 38 Troops 30 Paratroops	980	N/A
AN-26 CURL	AIRPLANE	Medium Transport	N/A	5,500kg 38 Troops 30 Paratroops	980	CURL
C130K (HERCULES)	AIRPLANE	Medium Transport	2 x 40mm Bofors 2 x 20mm Vulcan 2 x 7.62mm	92 Troops, 64 Paratroops 24 Stretcher	4,000	N/A
F-4	AIRPLANE	Air Defence/Ground Attack	2 x 30mm Gun Atoll/Aphid AAM 57/60mm Rockets	Approx 5000kg -(Weapons)	650-1450	N/A
HAWK	AIRPLANE	Multi-role	1-2, 25mm Aden Guns	N/A	892 - Internal 3610 with 3 Tanks	N/A
IL-14/3 (CRATE)	AIRPLANE	Transporter - (Civil + Military)	N/A	24 Paratroops 3300kg of freight	1500	N/A

Name	Classification	Role	Armament (mm)	Payload	Range	NATO Codename
IL-20	AIRPLANE	Elint/Reconnaissance	1 x 23mm NR-23 Cannon in Tail Position	120 Paratroops or 3 x BMD Vehicles or 40,000kg freight	4,000	COOT-A
IL-76(CANDID)	AIRPLANE	Heavy Transport	1 x 23mm Cannon	40,000kg	5,000	CANDID
L-39 (ALBATROSS)	AIRPLANE	Advanced Trainer	On The L-39Z = 1 x 23mm Gsh 23 Cannon + 1,000kg of weapons	1,000kg When used in Offensive Role	550-900	N/A
MiG-23	AIRPLANE	Ground Attack/EW Role or Possible Recce	4-6 AAM - (AA-10/AA-11)	4,500kg of weapons	850-1,110	FLOGGER
MiG-29	AIRPLANE	Dual Role - Air Combat + Attack	6 x AA-10/AA-11 1 x 30mm Gun + Pods	8325kg of weapons	1150	FULCRUM A
MIRAGE F1B	AIRPLANE	Fighter	1-3 Matra 530 or Matra 550 Magic, 2 x AIM-9 Sidewinder AAM	2,200kg of weapons	720-900	N/A
MIRAGE F1E	AIRPLANE	Fighter	2 x AIM9 & 3650 Weapon Load	2,200kg of weapons	720-900	N/A

<b>Name</b>	<b>Classification</b>	<b>Role</b>	<b>Armament (mm)</b>	<b>Payload</b>	<b>Range</b>	<b>NATO Codename</b>
Su-24	AIRPLANE	Strike Fighter	1 x 30mm Cannon 2 x Atoll/Aphid AAM 4 x ASM	Approx 11,000kg - (Weapons)	322-1300	FENCER
Su-25 (FROGFOOT)	AIRPLANE	Ground Attack	1 x 30mm Gun + 57/80mm Rockets + AA and AG	Approx 5,000kg - (Weapons)	556 With 2 Fuel Tanks	FROGFOOT
Su-27 (FLANKER A)	AIRPLANE	Air Superiority	1 x 30mm Gun, AA Includes: AA-10A/B/C + AA-11 or AA-8	6,000kg -	1,500	FLANKER A
Tu-16	AIRPLANE	Intermediate - Range	7 x 23mm NR-23 Guns * AS Missiles on Naval Version	9,000kg Bomb Load	3,150 - Unrefuelled	BADGER



## HELICOPTERS

Name	Classification	Armament (mm)	Payload	Crew	Range (km)	NATO Codeword
AH 1-S COBRA	HELICOPTER	1 x 20mm Cannon 8 x TOW ASM	750	2	200-240	N/A
CH-47	HELICOPTER	N/A	33-44 Troops 27 Paratroops 24 Stretcher Cases or 10,000kg Freight	2-3	500	N/A
KA-50 (HOKUM)	HELICOPTER	Heavily Armed	N/A	1	250	HOKUM
Mi-17 (Hip-C)	HELICOPTER	Military Transport Variant. Various Armaments can be attached	28 Troops or 4,000kg Freight	2 + (1)	465	HIP-C
Mi-17 (Hip-D)	HELICOPTER	Basic Communications/Abn Command Post	Max = 4,000kg Including Fuselage Mounted Antennas	2 + (1)	465	HIP-D
Mi-17 (Hip-E)	HELICOPTER	1 x Nose Mounted 12.7mm MG. Unguided Rockets ATGM	Ground Attack Variant can carry up to 8 Troops with Machine Guns	2 + (1)	465	HIP-E

<b>Name</b>	<b>Classification</b>	<b>Armament (mm)</b>	<b>Payload</b>	<b>Crew</b>	<b>Range (km)</b>	<b>NATO Codeword</b>
Mi-17 (Hip-J)	HELICOPTER	Airborne ECM	ECM Equipment plus Operators	2 + (1)	465	HIP-J
Mi-17 (Hip-K)	HELICOPTER	Airborne Communications Jamming Helicopter	Jammers plus Operators	2 + (1)	465	HIP-K
Mi-24 (HIND-E)	HELICOPTER	1 x Four-Barrelled 12.7mm Rotary MG, 4 x 32 Shot 57mm Rocket Pods 4 x SWATTER ATGM	7,300kg including Weapon Systems	3	400	HIND E
Mi-24 R/K (HIND)	HELICOPTER	1 x Four Barrelled 12.7mm Rotary MG, 64 or 128 x 57mm Rockets. 4 x SPIRAL or SWATTER ATGM	7,500kg including Weapon Systems	3	400	HIND
Mi-26 (HALO)	HELICOPTER	N/A	Capable of carrying Two Airborne Infantry Combat Vehicles or 95 Troops	5	800	HALO
Mi-28 (HAVOC)	HELICOPTER	30mm Traversable Cannon 16 x AT-6 ATGW. 20 Shot (80mm) Unguided Rockets + Mine Dispensers/Pods		2	470	HAVOC

<b>Name</b>	<b>Classification</b>	<b>Armament (mm)</b>	<b>Payload</b>	<b>Crew</b>	<b>Range (km)</b>	<b>NATO Codeword</b>
Mi-40 (HAVOC)	HELICOPTER	2 x 23mm Cannon + ATGM	8-10 Combat Troops	2	460	HAVOC
Mi-6 (ABN CP)	HELICOPTER	N/A	65 -70 Troops or 41 Stretcher Cases or Max of 12,000kg Freight	5	650-1,050	HOOK
Mi-6 (HOOK)	HELICOPTER	N/A	65 Troops or 12,000 kg	5	650-1,050	HOOK
Mi-8 (HIP)	HELICOPTER	4 x 32 Shot 57mm Rocket Pods	26 Troops	2 + (1)	500	HIP Variant
Mi-8 (HIP C)	HELICOPTER	12.7mm Nose Gun 6 x 32 Shot 57mm Rocket Pods 4 x Swatter ATGM	24-28 Troops or 12 Stretcher Cases or Max of 4,000kg Freight	2 + (1)	500	HIP Variant
Mi-8 (HIP H)	HELICOPTER	As Hip-C but with improved Power Plant	28 Troops or 4,000kg of Freight	2 + (1)	500	HIP Variant
Mi-8 (HIP J)	HELICOPTER	Airborne ECM Helicopter	ECM Equipment plus Operators	2 + (1)	500	HIP Variant

<b>Name</b>	<b>Classification</b>	<b>Armament (mm)</b>	<b>Payload</b>	<b>Crew</b>	<b>Range (km)</b>	<b>NATO Codeword</b>
Mi-8 (HIP K)	HELICOPTER	Airborne Communications Jamming Helicopter	Jammer plus Operators	2 + (1)	500	HIP Variant
Mi-8 M/MT (HIP)	HELICOPTER	12.7mm Nose Gun 6 x 32 Shot 57mm Rocket Pods 4 x Swatter ATGM	As Hip-C but this Helicopter has uprated Engine and Port Side Tail Rotor	2 + (1)	500	HIP Variant
OH-58 (KIOWA)	HELICOPTER	M27 Armament Kit Utilising the 7.62mm Mini Gun	361	2	490 - (Armed Scout Mission)	N/A
UH-1G	HELICOPTER	1 x 7.62 Mini-Gun 1 x 40mm Gnde Launcher	7 Troops or 3 Stretcher Cases or Max of 1,360kg Freight	2	400	N/A

### MULTIBARRELLED ROCKET LAUNCHERS

<b>Name</b>	<b>Classification</b>	<b>Tracked/ Wheeled</b>	<b>Calibre</b>	<b>Tubes</b>	<b>Munitions</b>	<b>Maximum</b>	<b>Crew</b>
9A52-2	MBRL	Wheeled	300	12	HE, Chem, ICM	70	4
9P140	MBRL	Wheeled	220	16	HE, ICM (30 Bomblets)	35	4
BM-11	MBRL	Wheeled	122	30	HE, Frag, Chem	20.5	5
BM-21	MBRL	Wheeled	122	40	HE Frag, Chem, Incendiary, Smoke	20.38	5
BM-21V	MBRL	Wheeled	122	12	HE Frag, Chem, Incendiary, Smoke	20	3
LAR160 Mk 2	MBRL	Wheeled	160	26	HE-COFRAM, ICM	34	5/7
M63 (PLAMEN)	MBRL	Wheeled	128	32	HE	8.54	7
M77 (OGANJ)	MBRL	Wheeled	128	32	HE, Frag	20.6	5
M87 (ORKAN)	MBRL	Wheeled	262	12	HE, Frag	50	5
MAR 290	MBRL	Wheeled	290	4	Data Not Held	25	4

<b>Name</b>	<b>Classification</b>	<b>Tracked/ Wheeled</b>	<b>Calibre</b>	<b>Tubes</b>	<b>Munitions</b>	<b>Maximum</b>	<b>Crew</b>
MRLS	MBRL	Tracked	127	40	HE, Frag, ICM	33	5
RAYO	MBRL	Wheeled	160.5	24	HE, Bomblet	40	4 (1)
RD MRLS	MBRL	Wheeled	70	114	HE, ICM	15	4
RPU-14	MBRL	Wheeled	140	16	HE, Frag, Chem	9.8	5
SS30	MBRL	Wheeled	180	16	HE, Frag, HE Incendiary, ICM	30	5
SS40	MBRL	Wheeled	127	32	HE, Frag, HE Incendiary, ICM	15.4	5
AA60	MBRL	Wheeled	300	4	HE, Frag, HE Incendiary, ICM	60	5
TERUEL	MBRL	Wheeled	140	40	HE, Frag, ICM	28	5
Type 81	MBRL	Wheeled	122	40	HE, HE-Frag, Incendiary, Cargo	30	7
VALKIRI	MBRL	Wheeled	127	40	HE, Frag, ICM	33	5

(1) The System Is Designed to be Loaded/Deployed by a Single Person if Required.

## RADAR

Name	Classification	Role	Frequency Range	Associated Weapon System	Detection Range (km)
ANTPQ 36	RADAR	Mortar Locating	J-Band	Arty	7-10
ARK	RADAR	Arty/Fire Direction/	(J) Band	All Arty	(25)
BILL BOARD	RADAR	AD Early Warning	E-F Band	SA-12/SA-11	200
DOG TAIL(MOD)	RADAR	AD Identification Friend or Foe	C Band	General AD	200-275
END TAIL	RADAR	AD Identification Friend or Foe	C Band	General AD	200-250
FIRE CAN	RADAR	AAA Fire Control	E-band	S-60	35
FLAP LID	RADAR	AD Tracking	I-J Band	SA-10	90
FLAP WHEEL	RADAR	AAA Fire Control	J-Band	S-60	18
FLAT FACE	RADAR	AD Early Warning	C-Band	General AD	210-250
GRILL PAN	RADAR	AD Missile Control	I/J Band	SA-12	175

<b>Name</b>	<b>Classification</b>	<b>Role</b>	<b>Frequency Range</b>	<b>Associated Weapon System</b>	<b>Detection Range (km)</b>
HIGH SCREEN	RADAR	AD Target Acquisition	I/J Band	SA-12	175
LONG TRACK	RADAR	AD Early Warning	E Band	General AD	200
PAT HAND	RADAR	AD Fire Control	H-Band	SA-4	80-90
POLE DISH	RADAR	Arty Locating	I/J Band	General Arty	12
PPRU	RADAR	AD Early Warning	F/G Band	Regt AD	35
R12B	RADAR	Battlefield Ground Surveillance	J-band	N/A	3-6
SCORE BOARD	RADAR	AD Identification Friend or Foe	C-Band	General AD	200-275
SNOW DRIFT	RADAR	AD Target Acquisition	F/G Band	SA-11	100
SPOON REST	RADAR	AD Early Warning	A Band	SA-2	200-275
STRAIGHT FLUSH	RADAR	AD Fire Control	G/H/I Band	SA-6	60-90
TALL MIKE	RADAR	Battlefield Ground Surveillance	J Band	Recce/Arty	2-7
THIN SKIN	RADAR	AD Heightfinder	H/I Band	General AD	240



### ANTI-AIRCRAFT ARTILLERY

<b>Name</b>	<b>Classification</b>	<b>Tracked/Wheeled</b>	<b>Calibre (mm)</b>	<b>Range (m)</b>	<b>Crew</b>
2S6	AAA	Tracked	30	8000	4
M1	AAA	Towed	40	4753-Horizontal 4661-Vertical	4-6
S60	AAA	Towed	57	6,005	7
Type 75-1	AAA	Towed	14.5	2,000	N/A
ZPU-1	AAA	Towed	14.5	8,000	4
ZPU-4	AAA	Towed	14.5	8,000	5
ZSU-23/4	AAA	Tracked	23	3,000	4
ZSU-57/2	AAA	Tracked	57	3,993	6
ZU-23	AAA	Towed	23	2,500	5

### FIELD ARTILLERY (TOWED)

Name	Classification	Calibre (mm)	Max Range (m)	Crew
2A36	ARTY TWD	87.6	12,250	6
2A36	ARTY TWD	152	28,000	8
2A61	ARTY TWD	152	15,900	6
2A65	ARTY TWD	152	24,700	8
BS3	ARTY TWD	100	21,000	6
D1	ARTY TWD	152	12,400	7
D20	ARTY TWD	152	17,300	10
D30	ARTY TWD	122	15,300	7
FH-70	ARTY TWD	155	24,700	8

<b>Name</b>	<b>Classification</b>	<b>Calibre (mm)</b>	<b>Max Range (m)</b>	<b>Crew</b>
FH-88	ARTY TWD	155	24,000	6
G5	ARTY TWD	155	30,000	8
GHN-45	ARTY TWD	155	30,300	6
M101	ARTY TWD	105	11,270	8
M114	ARTY TWD	155	14,600	11
M115	ARTY TWD	203	16,800	14
M30	ARTY TWD	122	11,800	6
M46	ARTY TWD	130	27,150	8
M48 (MOUNTAIN GUN)	ARTY TWD	76.2	8,750	6

<b>Name</b>	<b>Classification</b>	<b>Calibre (mm)</b>	<b>Max Range (m)</b>	<b>Crew</b>
M53	ARTY TWD	100	21,000	6
M56	ARTY TWD	105	13,000	6
Type 54-1	ARTY TWD	122	11,800	8
Type 59-1	ARTY TWD	130	27,490	8-10

### FIELD ARTILLERY (SELF-PROPELLED)

<b>Name</b>	<b>Classification</b>	<b>Tracked/Wheeled</b>	<b>Calibre (mm)</b>	<b>Range (m)</b>	<b>Crew</b>
2S1	ARTY SP	Tracked	122	21,900	4
2S19	ARTY SP	Tracked	152	24,700	5
2S23	ARTY SP	Wheeled	120	10,000	4
2S3	ARTY SP	Tracked	152	24,000	4
2S31	ARTY SP	Tracked	120	8,000	4
2S5	ARTY SP	Tracked	152	28,000	5-7
2S7	ARTY SP	Tracked	203	30,000	7
2S9	ARTY SP	Tracked	120	10,000	4
AS 90	ARTY SP	Tracked	155	24,700	5

<b>Name</b>	<b>Classification</b>	<b>Tracked/Wheeled</b>	<b>Calibre (mm)</b>	<b>Range (m)</b>	<b>Crew</b>
G6	ARTY SP	Wheeled	155	39,000	6
M108	ARTY SP	Tracked	105	11,500	5
M109	ARTY SP	Tracked	155	16,400	6
M109 A1	ARTY SP	Tracked	155	23,500	6
M109 A2	ARTY SP	Tracked	155	24,000	6
M110 A2	ARTY SP	Tracked	203	30,000	5
Type 83	ARTY SP	Tracked	152	17,230	5
Type 85	ARTY SP	Tracked	122	15,300	4

### ANTI-TANK MISSILES

Name	Classification	Platform	Armament (mm)	Guidance	Range (m)	Crew	NATO Codename
9P122	A/TK (MSL)	BRDM2	5 x AT3A	MCLOS Wire-guided	500-3,000	3	N/A
9P133	A/TK (MSL)	BRDM2	5 x AT3C	MCLOS Wire-guided	500-3,000	3	N/A
9P148	A/TK (MSL)	BRDM2	5 x AT5	SACLOS Wire-guided	100-4,000	3	N/A
9P149 (SHTURM-S)	A/TK (MSL)	MTLB	AT6	SACLOS Wire-guided	400-5,000	2	N/A
AT-10	A/TK (MSL)	BMP-3 and T-55	N/A	LASER Beam Rider	5,000	N/A	STABBER
AT-13	A/TK (MSL)	Manportable	N/A	SACLOS Wire-guided	1,500	1	METIS-M (Russian Name)
AT-3A	A/TK (MSL)	Manportable	N/A	MCLOS Wire-guided	500-3,000	2	SAGGER A
AT-3C	A/TK (MSL)	Manportable	N/A	SACLOS Wire-guided	350-3,000	3	SAGGER C
AT-4	A/TK (MSL)	Manportable	N/A	SACLOS Wire-guided	100-2,000	2	SPIGOT
AT-5	A/TK (MSL)	Manportable	N/A	SACLOS Wire-guided	100-4,000	3	SPANDREL

<b>Name</b>	<b>Classification</b>	<b>Platform</b>	<b>Armament (mm)</b>	<b>Guidance</b>	<b>Range (m)</b>	<b>Crew</b>	<b>NATO Codename</b>
AT-6	A/TK (MSL)	Manportable Diameter	130-Missiles	SACLOS Wire-guided	400-5,000	3	SPIRAL
M47 (DRAGON I)	A/TK (MSL)	Manportable	N/A	Wire-guided	1100	2	N/A
RED ARROW 8	A/TK (MSL)	Manportable	N/A	Infra-Red Wire Guidance (SACLOS)	100-3,000	2	N/A



### ANTI-TANK GUNS

Name	Classification	Calibre (mm)	Operation	Range (m)	Crew
2A45M	A/TK (GUN)	125 ATGM-5,000 Indirect-15,000	Towed Gun	3,000	6
B10	A/TK (GUN)	82	Recoilless Gun	4,500	3
D44	A/TK (GUN)	85	Towed Gun	1,600	5
D48	A/TK (GUN)	85	Towed Gun	18,970	8
M40 A2	A/TK (GUN)	106	Recoilless Gun	1,100	3
MT-12	A/TK (GUN)	100	Towed Gun	2,000 Indirect-15,000	6
MT-12M	A/TK (GUN)	100	Towed Gun	2,500 ATGM-5,000 Indirect-15,000	6
SPG-9	A/TK (GUN)	73	Recoilless Gun	1,300	3
T-12	A/TK (GUN)	100	Towed Gun	8,200	6

### SURFACE-TO-SURFACE MISSILES

Name	Classification	Warhead Type	Warhead Weight	Minimum	Maximum	Platform
FROG	SSM	Nuclear, HE and Chemical Yield = 1/5/25kt	HE = 500kg Nuclear = 4,500kg Chemical = 436kg	11	70	BAZ-135L4 (8x8) Truck
SS-1C	SSM	Nuclear, Chemical or HE Yield = 5-7kt	600kg (Average)	20	450-550	MAZ 543 (8x8) Truck
SS-21	SSM	Nuclear, Chemical or HE Yield = 10-100kt	482kg (Average)	20	120	ZIL 167 (6x6) Truck

## ENGINEERING EQUIPMENT

Name	Classification	Type	Equipment	Platform
9T-31NTS	ENGR PLANT	Crane	Missile Assoc	N/A
9T31M1	ENGR PLANT	Crane	N/A	URAL-375D
AK-75	ENGR PLANT	Crane	Capacity 7.5 Tonnes	ZIL-164A
BAT-1	ENGR PLANT	Bulldozer	Also used as a Trencher	N/A
BAT-2	ENGR PLANT	Armd Veh	Dozer, Crane, Winch, Pincer	MT-T Chassis
BAT-M	ENGR PLANT	Bulldozer	Improved BAT-1	N/A
BAV-485	ENGR PLANT	Amphibious veh	Amphibious APC	ZIL-151
BDT	ENGR PLANT	Mine clearing charge	Max Length 500m	N/A
BREM-1	ENGR PLANT	ARV	Fording, Winch, Crane, Welding	T-72 Chassis
BREM-4	ENGR PLANT	ARV	Winch, Crane, Dozer Blade	BMP-2 Running Gear, BMP-1 Chassis
BTM	ENGR PLANT	Trencher	1.5m x 1m (1120m per hour)	Rear of AT-T
BTR-50PK(B)	ENGR PLANT	ARV	Towing Gear and Hook	Amphibious BTR-50 APC

<b>Name</b>	<b>Classification</b>	<b>Type</b>	<b>Equipment</b>	<b>Platform</b>
BTU & BTU-55	ENGR PLANT	Armd Engr Veh	Tank Mounted Bulldozer	T-54 or T-55
DOC	ENGR PLANT	Excavator	Large Excavator Bucket on Front	Tractor
E305V	ENGR PLANT	Excavator	Large Excavator Bucket on Rear	KrAZ-214/KrAZ 255B 6 x 6 Trucks
IMR	ENGR PLANT	Armd Veh	Crane, Dozer, Grab	T-55 Chassis
IMR-2	ENGR PLANT	Armd Engr Veh	Dozer, Hydraulic Crane and Attachments	T-72
K-67	ENGR PLANT	Crane	Crane Capacity 6,300kg	MAZ - 500
K-68	ENGR PLANT	Crane	Crane Capacity 6,300kg	MAZ - 200
KET-L	ENGR PLANT	Recovery Veh	2 x Winches	URAL-375 Truck
KM-61	ENGR PLANT	Crane	Crane Capacity 3,200kg	KrAZ - 214
KS-1571	ENGR PLANT	Crane	Capacity 4,000kg	GAZ - 53A
KS-2571	ENGR PLANT	Crane	Capacity 6,200kg	ZIL - 130
KS-3562A	ENGR PLANT	Crane	Capacity 10,000kg	MAZ-500A

<b>Name</b>	<b>Classification</b>	<b>Type</b>	<b>Equipment</b>	<b>Platform</b>
LAZ-690	ENGR PLANT	Crane	Capacity 3,000kg	ZIL - 164A
MDK-2	ENGR PLANT	Trencher	Circular Digging Machine	AT-T Chassis
MDK-3	ENGR PLANT	Trencher	6 Bladed Digging Wheel, Dozer	Based on T-64 (With NBC System)
MMZ-555	ENGR PLANT	Dumper	Capacity = 40,000kg	Mounted on MMZ-555 Chassis
MPK-30	ENGR PLANT	Crane	Capacity 30 Tonnes	MAZ-529V
MTP	ENGR PLANT	ARV	NBC Recce, APC Repair	Tracked
MTP-LB	ENGR PLANT	ARV	Winch, Crane	Tracked
OLT	ENGR PLANT	Bulldozer	1m Trench Digger	AT-L or AT-LM
PSK	ENGR PLANT	Mine marker	A number of Flare Dispensing Cassettes	Tank Fit
T-54/T-55-T1	ENGR PLANT	ARV	Winch used for Towing Kit/ Crane	T-54 Chassis
VT-72B	ENGR PLANT	ARV	Front Mounted Dozer Blade, Crane	T-72 Chassis

## ELECTRONIC WARFARE PLATFORMS

Name	Classification	Role Sub Classification	Platform	Equipment
AR 1972	EW-COMINT			
COMTEL 3	EW-COMINT			
R381 T3	EW-COMINT			
RSH 500	EW-COMINT			

### EW - COMINT

<b>Name</b>	<b>Classification</b>	<b>Type</b>	<b>Frequency Range</b>
AR 1972	EW-COMINT	HF Receiver	100 KHz - 30 MHz
COMTEL 3	EW-COMINT	UHF Receiver	300 MHz - 1 GMz
R381 T3	EW-COMINT	HF/VHF/UHF Receiver	200-400 MHz (est)
RSH 500	EW-COMINT	VHF/UHF	20 - 1000 MHz

**DF**

<b>Name</b>	<b>Classification</b>	<b>Type</b>	<b>Frequency Range</b>	<b>Bearing</b>	<b>Accuracy</b>
Fixer 80	EW-DF	UHF DF	2-20,000 MHz	Line Accuracy < 2	Cut Accuracy 500m/10 Km
Lacar 30	EW-DF	HF DF	2 - 30 MHz	Line Accuracy < 3	Cut Accuracy < 1Km
R359	EW-DF	HF DF	2 - 30 MHz	Line Accuracy < 3	Cut Accuracy < 1Km
R381 T1	EW-DF	HF/UHF DF	(2-30 MHz) (90-180 MHz) (300-400 MHz)	Line Accuracy < 3 (est) < 2 < 2	Cut Accuracy < 1Km (est) < 500m < 500m
R381 T2	EW-DF	VHF	(20-100 MHz)	Line Accuracy < 3 (est)	Cut Accuracy < 500m (est)
RATOL 1000	EW-DF	VHF/UHF DF	20 - 1,000 MHz	Line Accuracy < 2	Cut Accuracy < 500m
SPIKE SQUARE	EW-DF	VHF DF	(25-60 MHz)	Line Accuracy < 2	Cut Accuracy < 600m



## JAMMING

<b>Name</b>	<b>Classification</b>	<b>Frequency Range</b>	<b>Type</b>	<b>Effective Range</b>
CRT 182	EW-JAMMER	2-30 MHz	Barrage	20 - 30 Km Range
CRT 283	EW-JAMMER	20-110 MHz	Spot	20 - 30 Km Range
CRT 284	EW-JAMMER	100-500 MHz	Spot	Mainly for Ground-Air-Air Comms
R330P	EW-JAMMER	30-300 MHz	Variable	15-25 Km (CNR)
RUSTLER	EW-JAMMER	2-18 GHz	Barrage	For Surveillance, Search & Tracking Radars
SPR-1	EW-JAMMER	180-305 MHz	Proximity Fuse Jammer	2km
SPR-2	EW-JAMMER	(100-350) MHz	Proximity Fuse Jammer	3-8km

## ELINT

<b>Name</b>	<b>Classification</b>	<b>Role</b>	<b>Frequency Range</b>	<b>Comments</b>
ORCA 600	EW-ELINT	Mobile Radar Analysis	2-20,000 MHz	Forward Recce TPC with Hydraulic Telescopic Mast to Automatically Intercept DF & Identify Emissions & Relay Data to CPS for Evaluation & Mapping.
TWIN BOX	EW-ELINT	Mobile Radar Intercept/DF and Analysis	(50 MHz-5 GHz)	Automatic Intercept of DF and Radar Emissions. Normally Divisional Recce Signature.

### SURFACE-TO-AIR-MISSILES

Name	Type	Classification	NATO Codename	Tracked/ Wheeled	Effective Range (km)	Comments
M48 (CHAPARRAL)	Low Altitude	SAM	N/A	Tracked	9	Tracked Uses TRACKSTAR Radar Homing System or AN/MPQ-54
SA-11 TELAR	Medium Altitude	SAM	GADFLY	Tracked	30	Uses Semi-Active Radar Homing. Associated Radar Systems are SNOW DRIFT/ FIRE DOME+ TUBE ARM
SA-12A	High Altitude	SAM	GLADIATOR	Wheeled	75	Uses Guidance/Semi-Active Radar Homing. Associated Radars are the GRILL PAN and BILLBOARD
SA-12B	High Altitude	SAM	GIANT	Wheeled	1	Uses Active Radar Homing. Associated Radars are the GRILL PAN and BILLBOARD
SA-13	Low Altitude	SAM	GOPHER	Tracked	9	MT-LB Chassis. Uses Semi-Active Radar Homing. DOG EAR = Associated Radar

Name	Type	Classification	NATO Codename	Tracked/ Wheeled	Effective Range (km)	Comments
SA-14	Low Altitude	SAM	GREMLIN	Manportable	6	Uses Passive Infra-Red Homing Device. No Associated Radar
SA-15 TELAR	Low Altitude	SAM	GAUNTLET	Tracked	12	Uses Command Guidance Principle
SA-4 TEL	Medium/High Altitude	SAM	GANEF	Tracked	4-5	Uses Command Guidance Principle. Associated Radars are LONG TRACK/PAT HAND + THIN SKIN
SA-6 TEL	Low/Medium Altitude	SAM	GAINFUL	Tracked	34	Same Chassis as ZSU-23/4. Associated Radar LONG TRACK
SA-7	Low Altitude	SAM	GRAIL	Manportable	3	Audible Warning for Target Lock On. Uses Passive Infra-Red Guidance System
SA-8B TELAR	Medium Altitude	SAM	GECKO	Tracked	12-13	Uses Radio/ Semi-Active Guidance System. Associated Radar=LAND ROLL/LONG TRACK/THIN SKIN
SA-9	Low Altitude	SAM	GASKIN	Wheeled	5	BRDM-2 Vehicle Type Platform. Uses Passive Infra-Red Homing. Associated Radar = DOG EAR

<b>Name</b>	<b>Type</b>	<b>Classification</b>	<b>NATO Codename</b>	<b>Tracked/ Wheeled</b>	<b>Effective Range (m)</b>	<b>Comments</b>
REDEYE8		SAM	N/A	Manportable	3,400	Shoulder Launch Platform. Uses Passive Infra-Red Homing

### COMMAND VEHICLES

<b>Name</b>	<b>Classification</b>	<b>Role</b>	<b>Capabilities</b>	<b>Crew</b>	<b>Associated</b>	<b>Max Operating Range</b>
1V111	COMD VEH	Battery Command and Observation Post	Artillery Target Acquisition and Ranging	7	Airborne	500
1V13	COMD VEH	Battery Command Post	Artillery Siting and Positioning	7	Tracked Self-Propelled Guns	500
1V14	COMD VEH	Battery Command and Observation Post	Artillery Target Acquisition and ranging	7	Tracked Self-Propelled Guns	500
1V15	COMD VEH	Battalion Command and Observation Post	Artillery Battalion Control	7	Tracked Self-Propelled Guns	500
1V16	COMD VEH	Battalion Fire Direction Centre	Artillery Fire Mission Computing	7	Tracked Self-Propelled Guns	500
1V18	COMD VEH	Battery Command and Observation Post	Artillery Target Acquisition and Ranging	7	Wheeled Guns + Multi-Barrelled Rocket Launcher	500

<b>Name</b>	<b>Classification</b>	<b>Role</b>	<b>Capabilities</b>	<b>Crew</b>	<b>Associated</b>	<b>Max Operating Range</b>
1V19	COMD VEH	Battalion Command and Observation Post	Artillery Battalion Control	7	Wheeled Guns + Multi-Barrelled Rocket Launcher	500
BMP-1 KSH	COMD VEH	Command and Communications	HF, VHF, UHF Communications	6	Tactical Level	500
BRDM-2U	COMD VEH	Command and Communications	HF and VHF Communications	4	Signals	750
BTR - 60PU12	COMD VEH	Air Defence Control	Command and Communications	5	All Levels of Air Defence	500
R145M	COMD VEH	Command and Communications	Mounts Clothes Rail and Hawk Antennas	5	Signals	500
R400/R404	COMD VEH	Radio Relay	Radio Relay	N/A	Division and Above	Carried on ZIL-131
SA-11 C2 VEH	COMD VEH	SA-11 Command and Control	Control and Telemetry for SA-11 Missions	(5)	SA-11 is Normally Fielded at Army Level	400

<b>Name</b>	<b>Classification</b>	<b>Role</b>	<b>Capabilities</b>	<b>Crew</b>	<b>Associated</b>	<b>Max Operating Range</b>
V150	COMD VEH	Generic Command	Command and Communications	3 Crew + 7 Staff	Command of Line and Specialized Units	643
V300	COMD VEH	Generic Command	Command and Communications	3 Crew + 9 Staff Members	Command of Line and Specialized Units	700



## SUPPORT VEHICLES

Name	Classification	Role	Max Load	Crew	Operating Range (kg)
9T234-2	SUPPORT VEHICLE	Missile Re-Loads	12 Missiles	3	850
AV-RMD	SUPPORT VEHICLE	Ammunition Re-Supply Vehicle for ASTROS 2	2 Complete Re-Load Sets	4	450
AV-VCC	SUPPORT VEHICLE	Command and Control Vehicle for ASTROS 2	Fire Control Radar	6	450
DR-5 Recovery	SUPPORT VEHICLE	Drone Recovery	1 Drone	4	600
DR-5 Support	SUPPORT VEHICLE	Drone Support	Control Function	4-6	600
FROG RESUP (9T29)	SUPPORT VEHICLE	Missile Re-Loads	3 Missiles	4	450
GAZ-66	SUPPORT VEHICLE	Truck	2,000kg	1 + 2	525
HEMITT	SUPPORT VEHICLE	MLRS Pod/ Load Carrier	10,000kg 4 Pods	4	400

<b>Name</b>	<b>Classification</b>	<b>Role</b>	<b>Max Load</b>	<b>Crew</b>	<b>Operating Range (kg)</b>
K750	SUPPORT VEHICLE	Motorcycle	N/A	1	250
K750V	SUPPORT VEHICLE	Motorcycle	N/A	1	250
KrAZ-255B	SUPPORT VEHICLE	Bridging, Tractor Timber	7,500kg	1 + 1	750
KrAZ-260	SUPPORT VEHICLE	Tractor	9,000kg	1 + 2	Approx 750
LuAZ - 967	SUPPORT VEHICLE	Amphibious Battlefield Support Vehicle	420kg	1 + 2 or 3	411
MAZ-537	SUPPORT VEHICLE	Tank Transport	65,000kg	1 + 2	650
SA-11 TLDR	SUPPORT VEHICLE	Missile Re-loads	8 x Missiles	2 + 4	400
SA-15 TLDR	SUPPORT VEHICLE	Missile Re-loads	8 x Missiles	4	450
SA-6 TLDR	SUPPORT VEHICLE	Missile Re-loads	3 Missiles	3	340
SA-8B	SUPPORT VEHICLE	Radar Calibration	N/A	5	500
SA-8B TLDR	SUPPORT VEHICLE	Missile Re-loads	18 Missiles	4	500
SCUD TLDR	SUPPORT VEHICLE	Missile Re-loads	1 x Missile	4	400

<b>Name</b>	<b>Classification</b>	<b>Role</b>	<b>Max Load</b>	<b>Crew</b>	<b>Operating Range (kg)</b>
SS-21 TLDR	SUPPORT VEHICLE	Missile Re-loads	2 x Missiles	4	500
UAZ-452 (AMB)	SUPPORT VEHICLE	Field Ambulance	4 x Stretchers	1 + 1	750
UAZ-452 (Minibus)	SUPPORT VEHICLE	Light Vehicle	10 Passengers	1	750
UAZ-469	SUPPORT VEHICLE	Light Vehicle	600kg	1 + 1	750
URAL-375	SUPPORT VEHICLE	General Transport	4,500kg	1 + 2	750
URAL-375D	SUPPORT VEHICLE	General Transport	4,500kg-On Road 4,000kg-Off Road	1 + 2	750
URAL-4320	SUPPORT VEHICLE	General Transport	Payload=5,000kg Towed Load=7,000kg	1 + 2	750
ZIL (Workshop)	SUPPORT VEHICLE	Workshop	Varied	1 + 2	850
ZIL-131	SUPPORT VEHICLE	General Transport	3,500kg	1 + 2	850
ZIL-157	SUPPORT VEHICLE	Linelayar	4,500kg-On Road 2,500kg-Off Road	1 + 2	850
ZOOPARK	SUPPORT VEHICLE				

## INFANTRY WEAPONS

<b>Name</b>	<b>Classification</b>	<b>Role</b>	<b>Calibre</b>	<b>Range (m)</b>
2B9	INF WEAPON	Breech Loaded Automatic Mortar	892mm	7,600 (Max)
AGS-17	INF WEAPON	Grenade Launcher	300mm	Effective = 8-1,200 Max = 1,750
AT-3	INF WEAPON	Anti-Tank Missile	Diameter=120mm	500 - 3,000
M2 (CARL GUSTAV)	INF WEAPON	Man-Portable Rocket Launcher	84mm	Anti-Tank = 450 HE = 1,000 Illumination = 2,000
RPG-16	INF WEAPON	Man-Portable Rocket	58.3mm	500 - 800
RPG-7	INF WEAPON	Short Range Anti-Tank	40mm	300 - Moving 500 - Stationary
RPG-7V	INF WEAPON	Short Range Anti-Tank	40mm	300 - Moving 500 - Stationary
RPK-74	INF WEAPON	Light Machine Gun	5.45mm	600 - 800
RPO-A	INF WEAPON	Flamethrower (Incendiary)	110mm	200-400

### STANOC EQUIPMENT

Name	Classification	Role	Radar	IRLS	Thermal Imagery	Television	Laser Range Finder	Laser Target Designator	Platform
AZK-5	STANOC	Sound Ranging	-	-	-	-	-	-	3 x GAZ-66 1 x ZIL 131
DR-3 Drone	STANOC	Drone	-	Yes	-	Yes	-	-	N/A
DR-3 Launcher	STANOC	Launcher	-	-	-	-	-	-	BAZ 135SPV
DR-5 Drone	STANOC	Drone	-	Yes	-	Yes	-	-	N/A
DR-5 Launcher	STANOC	Launcher	Yes	-	-	-	(Yes)	-	Special Launch Vehicle
PRP-3	STANOC	Arty Radar	Yes	-	-	-	Yes	(Yes)	BMP-1
PRP-4	STANOC	Arty Radar	Yes	-	Yes	-	Yes	Yes	BMP-1
PSNR-1 (SAGE GLOSS)	STANOC	Range Finder	-	-	-	-	Yes	-	N/A
SNAR-10	STANOC	Arty Radar	Yes	-	-	-	-	-	MT-LB
STERKH	STANOC	RPV	-	Yes	-	Yes	-	-	Modified BMD

## CHEMICAL DEFENCE

<b>Name</b>	<b>Classification</b>	<b>Role</b>	<b>Platform</b>	<b>Crew</b>
AGV-3M	CHEM DEF	Pers Decon	Up to 8 Vehicles	20+
ARS-12	CHEM DEF	Decon	ZIL-157	3/5
ARS-14	CHEM DEF	Decon	ZIL-131	3/5
BRDM-2RKH	CHEM DEF	Recce	BRDM-2	4
DDA-66	CHEM DEF	Suit Decon	GAZ-66	3
DKV	CHEM DEF	Decon	30 Ltr Cylinder	N/A
DPP	CHEM DEF	Suit Decon Trailer	Trailer	(2)
TMS-65	CHEM DEF	Veh Decon	Jet Engine on URAL Chassis	4/5
TZ-74	CHEM DEF	Veh Decon	Jet Engine on URAL Chassis	3
YAD 112	CHEM DEF	Smoke Pot	Toxic Smoke	N/A
YAD 21	CHEM DEF	Smoke Pot	Toxic Smoke	N/A

**ALPHABETICAL LISTING OF**

**ALL GENFORCE EQUIPMENT**

### ALL EQUIPMENT LISTINGS

<b>Name</b>	<b>Nationality</b>	<b>Classification</b>	<b>Section Reference</b>
1V111	Rus	COMD VEH	24-1
1V13	Rus	COMD VEH	24-1
1V14	Rus	COMD VEH	24-1
1V15	Rus	COMD VEH	24-1
1V16	Rus	COMD VEH	24-1
1V18	Rus	COMD VEH	24-1
1V19	Rus	COMD VEH	24-1
25 Pounder	UK	ARTY TWD	12-1
2A36	Rus	ARTY TWD	12-1



### ALL EQUIPMENT LISTINGS

<b>Name</b>	<b>Nationality</b>	<b>Classification</b>	<b>Section Reference</b>
2A45M	Rus	A/TK (GUN)	15-1
2A61	Rus	ARTY TWD	12-1
2A65	Rus	ARTY TWD	12-1
2B9	Rus	INF WEAPON	26-1
2S1	Rus	ARTY SP	13-1
2S19	Rus	ARTY SP	13-1
2S23	Rus	ARTY SP	13-1
2S3	Rus	ARTY SP	13-1
2S31	Rus	ARTY SP	13-1

### ALL EQUIPMENT LISTINGS

<b>Name</b>	<b>Nationality</b>	<b>Classification</b>	<b>Section Reference</b>
2S5	Rus	ARTY SP	13-1
2S6	Rus	AAA	11-1
2S7	Rus	ARTY SP	13-1
2S9	Rus	ARTY SP	13-1
9A52-2	Rus	MBRL	9-1
9P122	Rus	A/TK (MSL)	14-1
9P133	Rus	A/TK (MSL)	14-1
9P140	Rus	MBRL	9-1
9P148	Rus	A/TK (MSL)	14-1

### ALL EQUIPMENT LISTINGS

<b>Name</b>	<b>Nationality</b>	<b>Classification</b>	<b>Section Reference</b>
9P149 (SHTURM-S)	Rus	A/TK (MSL)	14-1
9T-311NTS	Rus	ENGR PLANT	17-1
9T234-2	Rus	SUPPORT VEHICLE	25-1
9T31M1	Rus	ENGR PLANT	17-1
AGS-17	Rus	INF WEAPON	26-1
AGV-3M COMPLEX	Rus	CHEM DEF	28-1
AH 1-S COBRA	USA	HELICOPTER	8-1
AK-75	Rus	ENGR PLANT	17-1
AN-12 (CUB)	Rus	AIRPLANE	7-1

### ALL EQUIPMENT LISTINGS

<b>Name</b>	<b>Nationality</b>	<b>Classification</b>	<b>Section Reference</b>
AN-24 (COKE)	Rus	AIRPLANE	7-1
AN-26 CURL	Rus	AIRPLANE	7-1
ANTPQ 36	USA	RADAR	10-1
AR 1972	Int	EW-COMINT	19-1
ARK	Rus	RADAR	11
ARS-12	Rus	CHEM DEF	28-1
ARS-14	Rus	CHEM DEF	28-1
AS 90	UK	ARTY SP	13-1
AT-10	Rus	A/TK (MSL)	14-1

## ALL EQUIPMENT LISTINGS

<b>Name</b>	<b>Nationality</b>	<b>Classification</b>	<b>Section Reference</b>
AT-13	Rus	A/TK (MSL)	14-1
AT-3 (Manpack)	Rus	INF WEAPON	26-1
AT-3A	Rus	A/TK (MSL)	14-1
AT-3C	Rus	A/TK (MSL)	14-1
AT-4	Rus	A/TK (MSL)	14-1
AT-5	Rus	A/TK (MSL)	14-2
AT-6	Rus	A/TK (MSL)	14-2
AV - RMD	Bra	SUPPORT VEHICLE	25-1
AV-VCC	Bra	SUPPORT VEHICLE	25-1

### ALL EQUIPMENT LISTINGS

<b>Name</b>	<b>Nationality</b>	<b>Classification</b>	<b>Section Reference</b>
AZK-5	Rus	STANOC	27-1
B10	Rus	A/TK (GUN)	15-1
BAT-1	Rus	ENGR PLANT	17-1
BAT-2	Rus	ENGR PLANT	17-1
BAT-M	Rus	ENGR PLANT	17-1
BAV-485	Rus	ENGR PLANT	17-1
BDT	Rus	ENGR PLANT	17-1
BILL BOARD	Rus	RADAR	10-1
BM-11	N Korea	MBRL	9-1

### ALL EQUIPMENT LISTINGS

<b>Name</b>	<b>Nationality</b>	<b>Classification</b>	<b>Section Reference</b>
BM-21	Rus	MBRL	9-1
BM-21V	Rus	MBRL	9-1
BMD	Rus	AFV	3
BMD-2	Rus	AFV	3
BMK-130/150	Rus	RIVER CROSSING	4-1
BMK-70/90	Rus	RIVER CROSSING	4-1
BMK-T	Rus	RIVER CROSSING	4-1
BMP-1	Rus	AFV	2-1
BMP-1 KSH	Rus	COMD VEH	24-1

### ALL EQUIPMENT LISTINGS

<b>Name</b>	<b>Nationality</b>	<b>Classification</b>	<b>Section Reference</b>
BMP-2	Rus	AFV	2-1
BMP-3	Rus	AFV	2-1
BRDM-1	Rus	RECCE	1-1
BRDM-2	Rus	RECCE	1-1
BRDM-2RKH	Rus	CHEM DEF	28-1
BRDM-2U	Rus	COMD VEH	24-2
BREM-1	Rus	ENGR PLANT	17-1
BREM-4	Rus	ENGR PLANT	17-1
BRM-1K	Rus	RECCE	1-1



### ALL EQUIPMENT LISTINGS

<b>Name</b>	<b>Nationality</b>	<b>Classification</b>	<b>Section Reference</b>
BS3	Rus	ARTY TWD	12-1
BTM	Rus	ENGR PLANT	17-2
BTR-60PU12	Rus	COMD VEH	24-2
BTR-50PK (B)	Rus	ENGR PLANT	17-2
BTR-60PB	Rus	AFV	2-1
BTR-D	Rus	AFV	2-1
BTR70	Rus	AFV	2-1
BTR80	Rus	AFV	2-1
BTU & BTU-55	Rus	ENGR PLANT	17-2

### ALL EQUIPMENT LISTINGS

<b>Name</b>	<b>Nationality</b>	<b>Classification</b>	<b>Section Reference</b>
C130K (HERCULES)	USA	AIRPLANE	7-1
CH-47	Rus	HELICOPTER	8-1
COMTEL 3	Int	EW-COMINT	19-1
CRT 182	Int	EW-JAMMER	21-1
CRT 283	Int	EW-JAMMER	21-1
CRT 284	Int	EW-JAMMER	22-1
D1	Rus	ARTY TWD	12-1
D20	Rus	ARTY TWD	12-1
D30	Rus	ARTY TWD	12-1

### ALL EQUIPMENT LISTINGS

<b>Name</b>	<b>Nationality</b>	<b>Classification</b>	<b>Section Reference</b>
D44	Rus	A/TK (GUN)	15-1
D48	Rus	A/TK (GUN)	15-1
DDA-66	Rus	CHEM DEF	28-1
DIM	Rus	MINCECLEARER	6-1
DKV	Rus	CHEM DEF	28-1
DL-10	Rus	RIVER CROSSING	4-1
DOC	Rus	ENGR PLANT	17-2
DOG TAIL (MOD)	Rus	RADAR	10-1
DPP	Rus	CHEM DEF	28-1

### ALL EQUIPMENT LISTINGS

<b>Name</b>	<b>Nationality</b>	<b>Classification</b>	<b>Section Reference</b>
DPP-40	Rus	RIVER CROSSING	4-1
DR-3 Drone	Rus	STANOC	27-1
DR-3 Launcher	Rus	STANOC	27-1
DR-5 Drone	Rus	STANOC	27-1
DR-5 Launcher	Rus	STANOC	27-1
DR-5 Recovery	Rus	SUPPORT VEHICLE	25-1
DR-5 Support	Rus	SUPPORT VEHICLE	25-1
E305V	Rus	ENGR PLANT	17-2
EE-11	Bra	RECCE	1-1

## ALL EQUIPMENT LISTINGS

Name	Nationality	Classification	Section Reference
EE-3	Bra	RECCE	1-1
EE-9	Bra	RECCE	1-1
END TAIL	Rus	RADAR	10-1
F-4 (PHANTOM)	USA	AIRPLANE	7-1
FERRET	UK	RECCE	2
FH-70	UK	ARTY TWD	12-1
FH-88	Sing	ARTY TWD	12-2
FIRE CAN	Rus	RADAR	10-1
Fixer 80	Int	EW-DF	20-1

### ALL EQUIPMENT LISTINGS

Name	Nationality	Classification	Section Reference
FLAP LID	Rus	RADAR	10-1
FLAP WHEEL	Rus	RADAR	10-1
FLAT FACE	Rus	RADAR	10-1
FROG	Rus	SSM	16-1
FROG RESUP (9T29)	Rus	SUPPORT VEHICLE	25-1
G5	SA	ARTY TWD	12-2
G6	SA	ARTY SP	13-2
GAZ-66	Rus	SUPPORT VEHICLE	25-1
GENDEF 1	Int	EW-PLATFORM	18-1

### ALL EQUIPMENT LISTINGS

<b>Name</b>	<b>Nationality</b>	<b>Classification</b>	<b>Section Reference</b>
GENDEF 2	Int	EW-PLATFORM	18-1
GENDEF 3	Int	EW-PLATFORM	18-1
GENREC 1	Int	EW-PLATFORM	18-1
GENREC 2	Int	EW-PLATFORM	18-1
GENREC 3	Int	EW-PLATFORM	18-1
GHN-45	Austria	ARTY TWD	12-2
GJC-1	Int	EW-PLATFORM	18-1
GJC-2	Int	EW-PLATFORM	1-1
GJC-3	Int	EW-PLATFORM	18-1

## ALL EQUIPMENT LISTINGS

<b>Name</b>	<b>Nationality</b>	<b>Classification</b>	<b>Section Reference</b>
GJE-1	Int	EW-PLATFORM	18-1
GMZ-3	Rus	MINELAYER	5-1
GRILL PAN	Rus	RADAR	10-1
GSE-1	Int	EW-PLATFORM	18-1
GSP	Int	RIVER CROSSING	4-1
HAWK	UK	AIRPLANE	7-1
HEMTT	USA	SUPPORT VEHICLE	25-1
HIGH SCREEN	Rus	RADAR	10-2
IL-14/3 (CRATE)	Rus	AIRPLANE	7-1



## ALL EQUIPMENT LISTINGS

Name	Nationality	Classification	Section Reference
IL-20	Rus	AIRPLANE	7-2
IL-76 (CANDID)	Rus	AIRPLANE	7-2
IMP/IMP-2	Rus	MINECLEARER	6-1
IMR	Rus	ENGR PLANT	17-2
IMR-2	Rus	ENGR PLANT	17-2
IPR	Rus	RECCE	1-1
IRM	Rus	RECCE	1-1
K-61	Rus	RIVER CROSSING	4-1
K-67	Rus	ENGR PLANT	17-2

### ALL EQUIPMENT LISTINGS

<b>Name</b>	<b>Nationality</b>	<b>Classification</b>	<b>Section Reference</b>
K-68	Rus	ENGR PLANT	17-2
K750	Rus	SUPPORT VEHICLE	25-1
K750V	Rus	SUPPORT VEHICLE	25-1
KA-50 (HOKUM)	Rus	HELICOPTER	8-1
KET-L	Rus	ENGR PLANT	17-2
KM-61	Rus	ENGR PLANT	17-3
KMM	Rus	RIVER CROSSING	4-1
KMT-40	Rus	MINECLEARER	6-1
KMT-5	Rus	MINECLEARER	6-1

## ALL EQUIPMENT LISTINGS

<b>Name</b>	<b>Nationality</b>	<b>Classification</b>	<b>Section Reference</b>
KMT-6	Rus	MINECLEARER	6-1
KMT-7	Rus	MINECLEARER	6-1
KMT-8	Rus	MINECLEARER	6-1
KRAZ-255B	Rus	SUPPORT VEHICLE	25-2
KRAZ-260	Rus	SUPPORT VEHICLE	25-2
KS-1571	Rus	ENGR PLANT	17-3
KS-2571	Rus	ENGR PLANT	17-3
KS-3562A	Rus	ENGR PLANT	17-3
L-39 (ALBATROSS)	Czech	AIRPLANE	7-2

## ALL EQUIPMENT LISTINGS

<b>Name</b>	<b>Nationality</b>	<b>Classification</b>	<b>Section Reference</b>
Lacar 30	Int	EW-DF	20-1
LAR160 Mk 2	Israel	MBRL	9-1
LAZ-690	Rus	ENGR PLANT	17-3
LONG TRACK	Rus	RADAR	10-2
LUAZ-967 (AMB)	Rus	SUPPORT VEHICLE	25-2
M1	USA	AAA	11-1
M1 A2	USA	TANK	3-1
M101	USA	ARTY TWD	12-2
M1068 (M113)	USA	RECCE	1-1

### ALL EQUIPMENT LISTINGS

<b>Name</b>	<b>Nationality</b>	<b>Classification</b>	<b>Section Reference</b>
M108	USA	ARTY SP	13-2
M109	USA	ARTY SP	13-2
M109 A1	USA	ARTY SP	13-2
M109 A2	USA	ARTY SP	13-2
M110 A2	USA	ARTY SP	13-2
M113	USA	AFV	2-2
M113 A1	USA	AFV	2-2
M113 A2	USA	AFV	2-2
M114	USA	ARTY TWD	12-2

## ALL EQUIPMENT LISTINGS

<b>Name</b>	<b>Nationality</b>	<b>Classification</b>	<b>Section Reference</b>
M115	USA	ARTY TWD	12-2
M2 (CARL GUSTAV)	Sweden	INF WEAPON	26-1
M30	Rus	ARTY TWD	12-2
M40 A2	USA	A/TK (GUN)	15-1
M46	Rus	ARTY TWD	12-2
M47 (DRAGON 1)	USA	A/TK (MSL)	14-2
M48	USA	TANK	3-1
M48 A3	USA	TANK	3-1
M48 A5	USA	TANK	3-1

### ALL EQUIPMENT LISTINGS

<b>Name</b>	<b>Nationality</b>	<b>Classification</b>	<b>Section Reference</b>
M48 (CHAPARRAL)	USA	SAM	23-1
M48 (MOUNTAIN)	Yugo	ARTY TWD	12-2
M53	Yugo	ARTY TWD	12-2
M56	Yugo	ARTY TWD	12-2
M60 A1	USA	TANK	3-1
M63 (PLAMEN)	Yugo	MBRL	9-1
M77 (OGANJ)	Yugo	MBRL	9-1
M8 (GREYHOUND)	USA	RECCE	1-1
M87 (ORKAN)	Yugo	MBRL	9-1

## ALL EQUIPMENT LISTINGS

<b>Name</b>	<b>Nationality</b>	<b>Classification</b>	<b>Section Reference</b>
MAMBA II	SA	RECCE	1-1
MAR 290	Israel	MBRL	9-1
MAZ-537	Rus	SUPPORT VEHICLE	25-2
MDK-2	Rus	ENGR PLANT	17-3
MDK-3	Rus	ENGR PLANT	17-3
Mi-17 (Hip-C)	Rus	HELICOPTER	8-1
Mi-17 (Hip-D)	Rus	HELICOPTER	8-1
Mi-17 (Hip-E)	Rus	HELICOPTER	8-1
Mi-17 (Hip-J)	Rus	HELICOPTER	8-2



### ALL EQUIPMENT LISTINGS

<b>Name</b>	<b>Nationality</b>	<b>Classification</b>	<b>Section Reference</b>
Mi-17 (Hip-K)	Rus	HELICOPTER	8-2
Mi-24 (HIND-E)	Rus	HELICOPTER	8-2
Mi-24 R/K (HIND)	Rus	HELICOPTER	8-2
Mi-26 (HALO)	Rus	HELICOPTER	8-2
Mi-28 (HAVOC)	Rus	HELICOPTER	8-2
Mi-40 (HAVOC)	Rus	HELICOPTER	8-3
Mi-6 (ABN CP)	Rus	HELICOPTER	8-3
Mi-6 (HOOK)	Rus	HELICOPTER	8-3
Mi-8 (HIP)	Rus	HELICOPTER	8-3

## ALL EQUIPMENT LISTINGS

<b>Name</b>	<b>Nationality</b>	<b>Classification</b>	<b>Section Reference</b>
Mi-8 (HIP C)	Rus	HELICOPTER	8-3
Mi-8 (HIP H)	Rus	HELICOPTER	8-3
Mi-8 (HIP J)	Rus	HELICOPTER	8-4
Mi-8 (HIP K)	Rus	HELICOPTER	8-4
Mi-8M/MT (HIP)	Rus	HELICOPTER	8-4
MiG-23 (FLOGGER)	Rus	AIRPLANE	7-2
MiG-29 (FULCRUM)	Rus	AIRPLANE	7-2
MIRAGE F1B	France	AIRPLANE	7-2
MIRAGE F1E	France	AIRPLANE	7-2

## ALL EQUIPMENT LISTINGS

<b>Name</b>	<b>Nationality</b>	<b>Classification</b>	<b>Section Reference</b>
MLG-60	Germany	MINELAYER	5-1
MLRS	USA	MBRL	9-2
MMZ-555	Rus	ENGR PLANT	17-3
MPK-30	Rus	ENGR PLANT	17-3
MT-12 (1)	Rus	A/TK (GUN)	15-1
MT-12M	Rus	A/TK (GUN)	15-1
MT-55	Rus	RIVER CROSSING	4-1
MT-LB	Rus	AFV	2-2
MTK	Rus	MINECLEARER	6-1

### ALL EQUIPMENT LISTINGS

<b>Name</b>	<b>Nationality</b>	<b>Classification</b>	<b>Section Reference</b>
MTK-2	Rus	MINECLEARER	6-1
MTP	Rus	ENGR PLANT	17-3
MTP-LB	Rus	ENGR PLANT	17-4
MTU-1	Rus	RIVER CROSSING	4-1
MTU-20	Rus	RIVER CROSSING	4-1
MTU-30	Rus	RIVER CROSSING	4-2
MTU-72	Rus	RIVER CROSSING	4-2
MZhM-56	Rus	RIVER CROSSING	4-2
OH-58 (KIOWA)	USA	HELICOPTER	8-4

## ALL EQUIPMENT LISTINGS

Name	Nationality	Classification	Section Reference
OLT	Rus	ENGR PLANT	17-4
ORCA 600	Int	EW-ELINT	22-1
OT-64C (1)	Czech	AFV	2-2
PAT HAND	Rus	RADAR	10-2
PKP	Rus	RIVER CROSSING	4-2
PMM-2	Rus	RIVER CROSSING	4-2
PMP	Rus	RIVER CROSSING	4-2
PMR-2/3	Rus	MINELAYER	5-1
PMR-3	Rus	MINELAYER	5-1

### ALL EQUIPMENT LISTINGS

<b>Name</b>	<b>Nationality</b>	<b>Classification</b>	<b>Section Reference</b>
PMZ-4	Rus	MINELAYER	5-1
POLE DISH	Rus	RADAR	10-2
PPRU	Rus	RADAR	10-2
PPS	Rus	RIVER CROSSING	4-2
PRP-3	Rus	STANOC	27-1
PRP-4	Rus	STANOC	27-1
PSK	Rus	ENGR PLANT	17-4
PSNR-1 (SAGE GLOS)	Rus	STANOC	27-2
PTS	Rus	RIVER CROSSING	4-2

### ALL EQUIPMENT LISTINGS

Name	Nationality	Classification	Section Reference
PTS-2	Rus	RIVER CROSSING	4-2
R12B	France	RADAR	10-2
R145BM	Rus	COMD VEH	24-2
R330P	Rus	EW-JAMMER	21-1
R359	Rus	EW-DF	20-1
R381 T1	Rus	EW-DF	20-1
R381 T2	Rus	EW-DF	20-1
R381 T3	Rus	EW-COMINT	29-1
R400/R404	Rus	COMD VEH	24-2

## ALL EQUIPMENT LISTINGS

<b>Name</b>	<b>Nationality</b>	<b>Classification</b>	<b>Section Reference</b>
RATOL 1000	Int	EW-DF	20-1
RAYO	UK/Chile	MBRL	9-2
RD MLRS	USA	MBRL	9-2
RED ARROW 8	China	A/TK (MSL)	14-2
REDEYE 8	USA	A/TK (MSL)	14-2
RMM-4	Rus	RIVER CROSSING	4-2
RPG-16	Rus	INF WEAPON	26-1
RPG-7	Rus	INF WEAPON	26-1
RPG-7V	Rus	INF WEAPON	26-1



## ALL EQUIPMENT LISTINGS

<b>Name</b>	<b>Nationality</b>	<b>Classification</b>	<b>Section Reference</b>
RPK-74	Rus	INF WEAPON	26-1
RPO-A	Rus	INF WEAPON	26-1
RPU-14	Rus	MBRL	9-2
RSH 500	Rus	EW-COMINT	19-1
RUSTLER	Int	EW-JAMMER	21-1
S60	Rus	AAA	11-1
SA-11 C2 VEH	Rus	COMD VEH	24-2
SA-11 TELAR	Rus	SAM	23-1
SA-11 TLDR	Rus	SUPPORT VEHICLE	25-2

### ALL EQUIPMENT LISTINGS

<b>Name</b>	<b>Nationality</b>	<b>Classification</b>	<b>Section Reference</b>
SA-12A	Rus	SAM	23-1
SA-12B	Rus	SAM	23-1
SA-13	Rus	SAM	23-1
SA-14	Rus	SAM	23-1
SA-15 TELAR	Rus	SAM	23-2
SA-15 TLDR	Rus	SUPPORT VEHICLE	25-2
SA-4 TEL	Rus	SAM	23-2
SA-6 TEL	Rus	SAM	23-2
SA-15 TLDR	Rus	SUPPORT VEHICLE	25-2

### ALL EQUIPMENT LISTINGS

<b>Name</b>	<b>Nationality</b>	<b>Classification</b>	<b>Section Reference</b>
SA-7	Rus	SAM	23-2
SA-8B COLLIMATION	Rus	SUPPORT VEHICLE	25-2
SA-8B TELAR	Rus	SAM	23-2
SA-8B TLDR	Rus	SUPPORT VEHICLE	25-2
SA-9	Rus	SAM	23-2
SARM	Rus	RIVER CROSSING	4-2
SCORE BOARD	Rus	RADAR	10-2
SCUD TLDR	Rus	SUPPORT VEHICLE	25-2
SNAR-10	Rus	STANOC	27-2

### ALL EQUIPMENT LISTINGS

<b>Name</b>	<b>Nationality</b>	<b>Classification</b>	<b>Section Reference</b>
SNOW DRIFT	Rus	RADAR	10-2
SPG-9	Rus	A/TK (GUN)	15-1
SPIKE SQUARE	Rus	EW-DF	20-1
SPOON REST	Rus	RADAR	10-2
SPR-1	Rus	EW-JAMMER	21-1
SPR-2	Rus	EW-JAMMER	21-1
SS-1C	Rus	SSM	16-1
SS-21	Rus	SSM	16-1
SS-21 TLDR	Rus	SUPPORT VEHICLE	25-3