



**Radioactive Waste
Management**

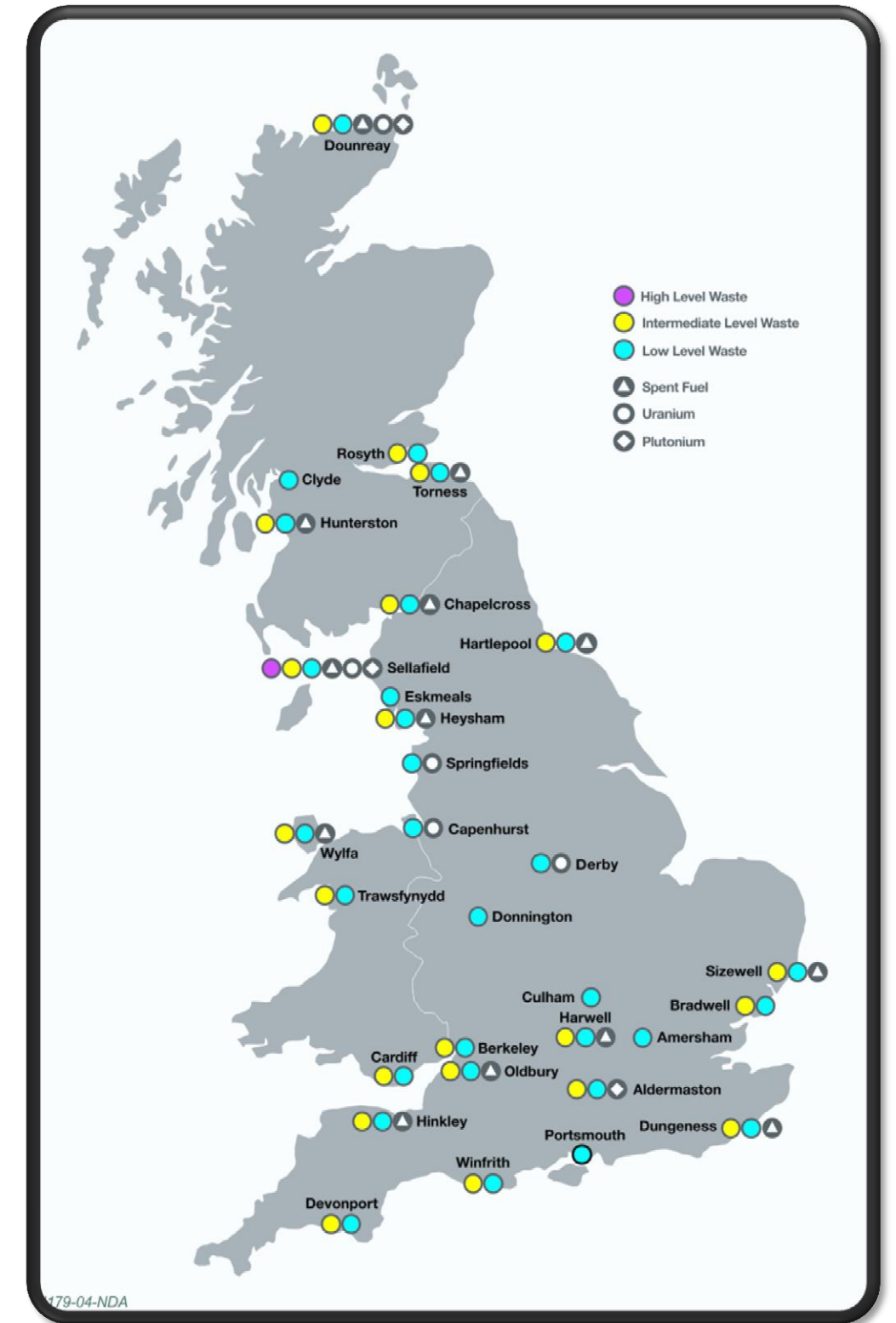
Making radioactive waste ready for disposal

Ann McCall

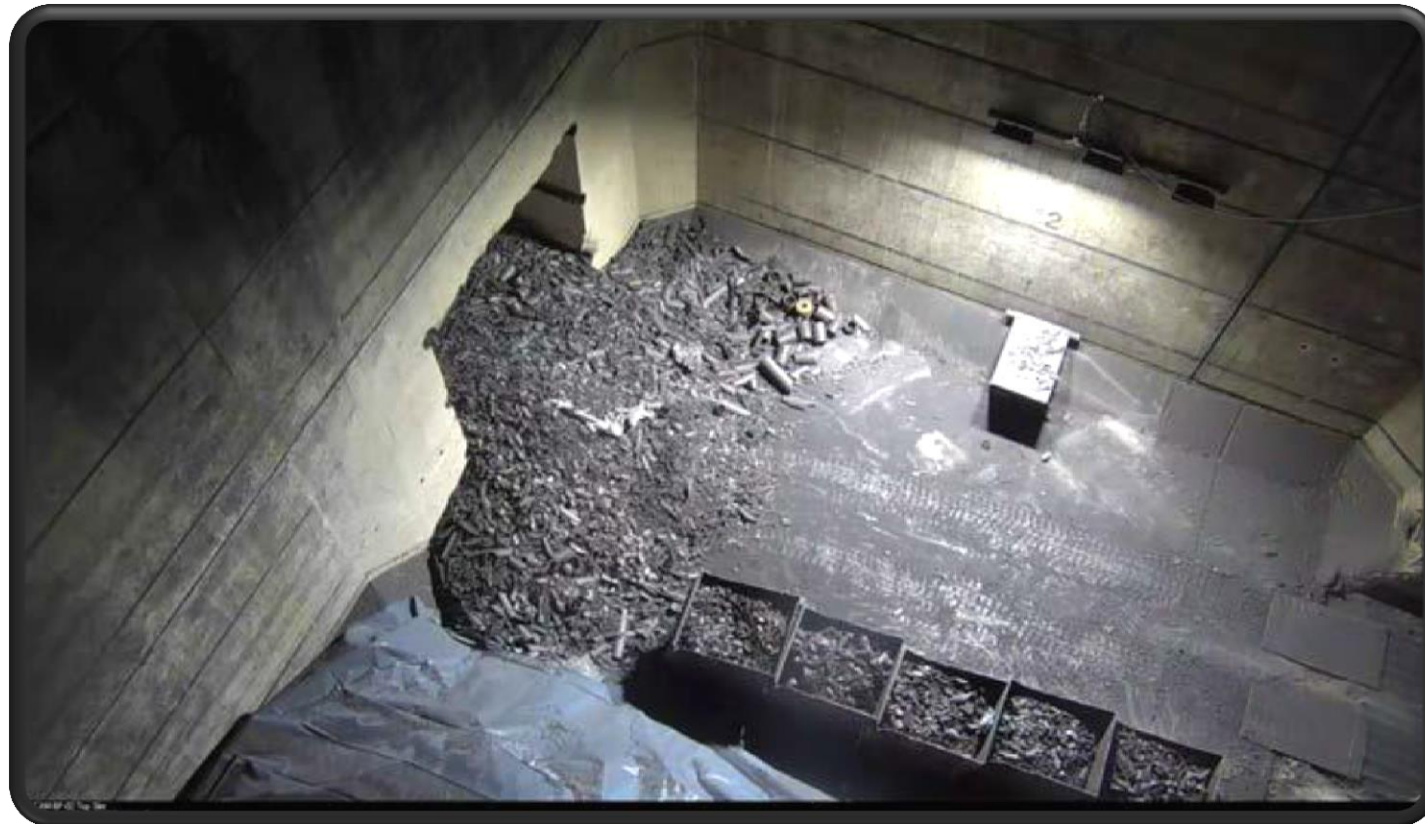
Waste Management Director

Waste is being packaged today

- The challenge is to ensure waste packaged today is suitable for long term management and disposal in a GDF
- RWM is working with sites to achieve:
 - reduction of risk and hazards on sites
 - early site clearance
 - waste packaged in a form suitable for a GDF



Early waste retrieval for Magnox sites



Endorsement of the retrieval and packing of graphite from Hunterston A bunkers in advance of cementation has enabled early clearance



Engagement and issuing of fLoC for waste packaging in DCICs has supported early retrieval from Berkeley vaults

Flexible working to endorse DCIC packages

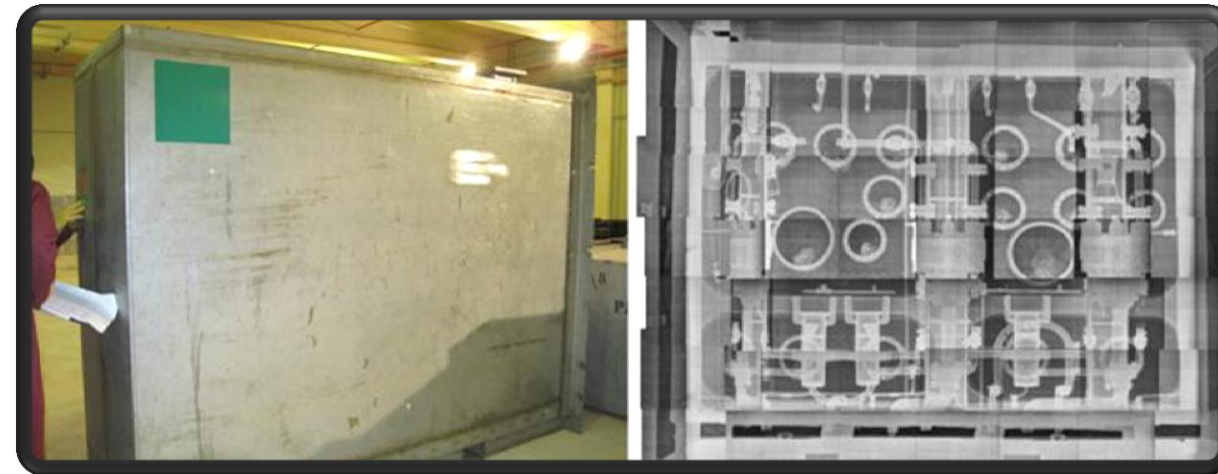
- Innovative packages based on Ductile Cast Iron Containers (DCICs) proposed for power station wastes by Magnox and EdF Energy
- Mutual understanding of package performance and provide basis for assessment and endorsement
- Supporting regulators to allow packaging based on agreed paths to resolution of issues
- RWM flexibility and engagement recognised by waste packagers and regulators



Supporting waste management at Sellafield



Commissioning the treatment route for Pile Fuel Storage Pond legacy sludges, resulting in greater throughput in the Waste Encapsulation Plant



Supporting the management of plutonium-contaminated materials through our Expert View programme



Increased throughput of the Magnox Encapsulation Plant speeds up fuel reprocessing at Sellafield



Enabling improved processing of wastes across Sellafield. Including the increase in throughput at the High Level Waste Vitrification Plant.

Supporting innovation and efficiency at Sellafield

“RWM were fantastic and understood straight away what we were trying to do in MSSS ... We worked with them to apply what we call the ‘decommissioning mind set’ and work out whether we had the balance right between the future needs of the geological disposal facility and reducing risk at Sellafield”

Alan Parry – Sellafield Limited Decommissioning
Division Head of Strategy and Technical

“The recent success of RWM and SL working jointly on rapid turn-round of Rotary Skip Wash Debris disposability assessment is an excellent example of where collaborative working between RWM and SL can deliver real benefit.”

Steve Walker – Sellafield Limited Operations
Division Head of Strategy and Technical

“The new engagements with the RWM team give a much greater understanding and confidence in how they are supporting Sellafield and are welcomed by our management team”

Office of Nuclear Regulation (ONR) on the revised working arrangements between RWM and Sellafield Ltd

Summary

- Radioactive waste exists and is being packaged today
- RWM is gaining important knowledge of the waste, understanding its characteristics and compatibility with the evolving GDF design
- It informs the GDF siting process and RWM's development as a competent future site-licence company