



Department  
of Energy &  
Climate Change



# Domestic Green Deal and Energy Company Obligation in Great Britain, Monthly report

Statistical release: National Statistics

23 July 2015

© Crown copyright 2015

You may re-use this information (not including logos) free of charge in any format or medium, under the terms of the Open Government Licence.

To view this licence, visit [www.nationalarchives.gov.uk/doc/open-government-licence/](http://www.nationalarchives.gov.uk/doc/open-government-licence/) or write to the Information Policy Team, The National Archives, Kew, London TW9 4DU, or email: [psi@nationalarchives.gsi.gov.uk](mailto:psi@nationalarchives.gsi.gov.uk).

Any enquiries or comments in relation to this statistical release should be sent to DECC's Household Energy Efficiency Statistics Team at the following email address:

[EnergyEfficiency.Stats@decc.gsi.gov.uk](mailto:EnergyEfficiency.Stats@decc.gsi.gov.uk)

Contact telephone: 0300 068 5106

This document is also available from our website at

<https://www.gov.uk/government/collections/green-deal-and-energy-company-obligation-eco-statistics>

# Contents

Charts .....	4
National Statistics .....	4
<b>Executive summary .....</b>	<b>5</b>
Introduction .....	5
Key points .....	5
<b>Detailed Results .....</b>	<b>6</b>
All measures installed up to end May 2015 (Table 1 and Table 1a) .....	6
Green Deal Assessments, by month (Table 2, Chart 1).....	6
Green Deal Plans in unique properties, cumulative totals by month (Table 3, Table 3a, Table 3b, Chart 2).....	7
Green Deal Home Improvement Fund where payments have been made, by month of installation (Table 5, Table 5a, Chart 3, Chart 4) .....	8
ECO measures installed by obligation, up to the end of May 2015 (Table 6, Table 6a, Chart 5, Chart 6).....	10
ECO brokerage, as at the end of June 2015 (Table 7, Chart 7).....	12
Measures not captured by administrative data sources .....	12
Supply chain, as at the end of June 2015 (Table 8, Chart 8) .....	12
<b>Annex A – Tables.....</b>	<b>14</b>
<b>Annex B – Background .....</b>	<b>28</b>
Green Deal .....	28
Energy Company Obligation .....	29
Green Deal Cashback.....	29
Green Deal Home Improvement Fund.....	30
ECO Brokerage .....	30
The Supply Chain .....	30
<b>Annex C – Sources and Methodology.....</b>	<b>31</b>
Revision Policy .....	31
Further Information and Feedback.....	31
Next Releases .....	32

## Charts

Chart 1 - Number of Green Deal Assessments lodged, by month .....	7
Chart 2 - Number of Green Deal Plans in unique properties, cumulative totals at end of each month, and by stages.....	8
Chart 3 – Cumulative number of Green Deal Home Improvement Fund vouchers where payments were made, by month of installation and by month of payment, at end of each month	9
Chart 4 – Number of measures installed where GDHIF payments have been made, by the end of June 2015 .....	9
Chart 5 - Provisional number of ECO measures installed, by obligation, in each month .....	10
Chart 6 - Provisional number of measures installed under ECO, by measure type, by obligation, up to end May 2015 .....	11
Chart 7 – Value of ECO brokerage contracts let, by auction.....	12
Chart 8 – Development of supply chain (cumulative numbers) at end of each month .....	13



## National Statistics

This is a National Statistics publication.

The United Kingdom Statistics Authority has designated these statistics as National Statistics, in accordance with the Statistics and Registration Service Act 2007 and signifying compliance with the UK Statistics Authority: Code of Practice for Official Statistics. The Statistics Authority published its report on 12 June 2014:

<http://www.statisticsauthority.gov.uk/assessment/assessment/assessment-reports/index.html>.

Designation can be broadly interpreted to mean that the statistics:

- meet identified user needs
- are well explained and readily accessible
- are produced according to sound methods, and
- are managed impartially and objectively in the public interest

Once statistics have been designated as National Statistics it is a statutory requirement that the Code of Practice shall continue to be observed.

# Executive summary

## Introduction

This release presents the latest statistics on the Green Deal (GD) up to the end of June 2015 and the Energy Company Obligation (ECO) up to the end of May 2015.

For more details about the GD/ECO schemes, please see [Annex B](#). More detailed analysis of GD Assessments lodged, measures installed under Cashback and the Green Deal Home Improvement Fund and provisional measures installed under ECO up to the end of March 2015 are also available in the [quarterly statistical release](#).

## Key points

- Around 1.54 million measures were installed in around 1.25 million properties through ECO, Cashback, GD Plans and the Green Deal Home Improvement Fund to the end of May 2015 (the latest month that we have complete data for). The large majority of installed measures (96 per cent) were delivered through ECO.
- GD Assessments – 575,936 were lodged up to the end of June 2015 (Chart 1). The 16,071 GD Assessments in June was 14 per cent higher than the number in May 2015 (14,061) but 45 per cent lower than the number in June 2014.
- GD Plans – 15,596 households had GD Plans in progress at the end of June 2015, seven per cent more than the 14,615 at the end of May 2015. Of these, 2,759 were ‘new’ (quote accepted), another 2,838 were ‘pending’ (Plan signed) and 9,999 were ‘live’ (all measures installed), 64 per cent of all Plans (Chart 2).
- Green Deal Home Improvement Fund – by the end of June 2015, there were 38,833 active applications under releases 1, 2 and 3. Of these, 23,593 vouchers had been paid (following installation of 27,140 measures), with a value of £114.2m. This is around 67 per cent of the £171m total budget committed under releases 1, 2 and 3. Around £12.3m payments were made in June from 3,237 vouchers. Over three-quarters of the measures installed were solid wall insulation (77 per cent).
- ECO measures – provisional figures show there were 1,484,597 measures installed under ECO up to the end of May 2015, with 29,603 installed in May, one per cent higher than the 29,205 installed in April 2015.
- Of all notified ECO measures installed to date, 38 per cent were for cavity wall insulation, 27 per cent were for loft insulation, and 21 per cent were for boiler upgrades. All solid wall insulation types accounted for six per cent (Chart 6).
- Through ECO, the Affordable Warmth and the Carbon Savings Community obligations combined have delivered 853,000 measures in around 685,000 low income and vulnerable households, or households in specified areas of low income.
- The number of Green Deal accredited installers has decreased for the tenth consecutive month since its peak of 2,774 at the end of August 2014 to 2,129 at the end of June 2015.

## Detailed Results

This section of the report provides the latest available information on different elements of the Green Deal (GD) and ECO. This includes the number of Assessments and GD Plans, Cashback and GDHIF vouchers spent, measures installed through GDHIF, Green Deal Plans and ECO, a summary of ECO brokerage and an overview of the supply chain. Data on GD are presented to the end of June 2015 in this release, whilst ECO is presented to the end of May 2015. Aggregate data on all measures installed are also presented to the end of May 2015.

The GD and ECO [quarterly statistical release](#) provides a range of analysis and further breakdowns on Assessments lodged, GDHIF measures installed and provisional ECO measures installed to the end of March 2015.

### All measures installed up to end May 2015 (Table 1 and Table 1a)

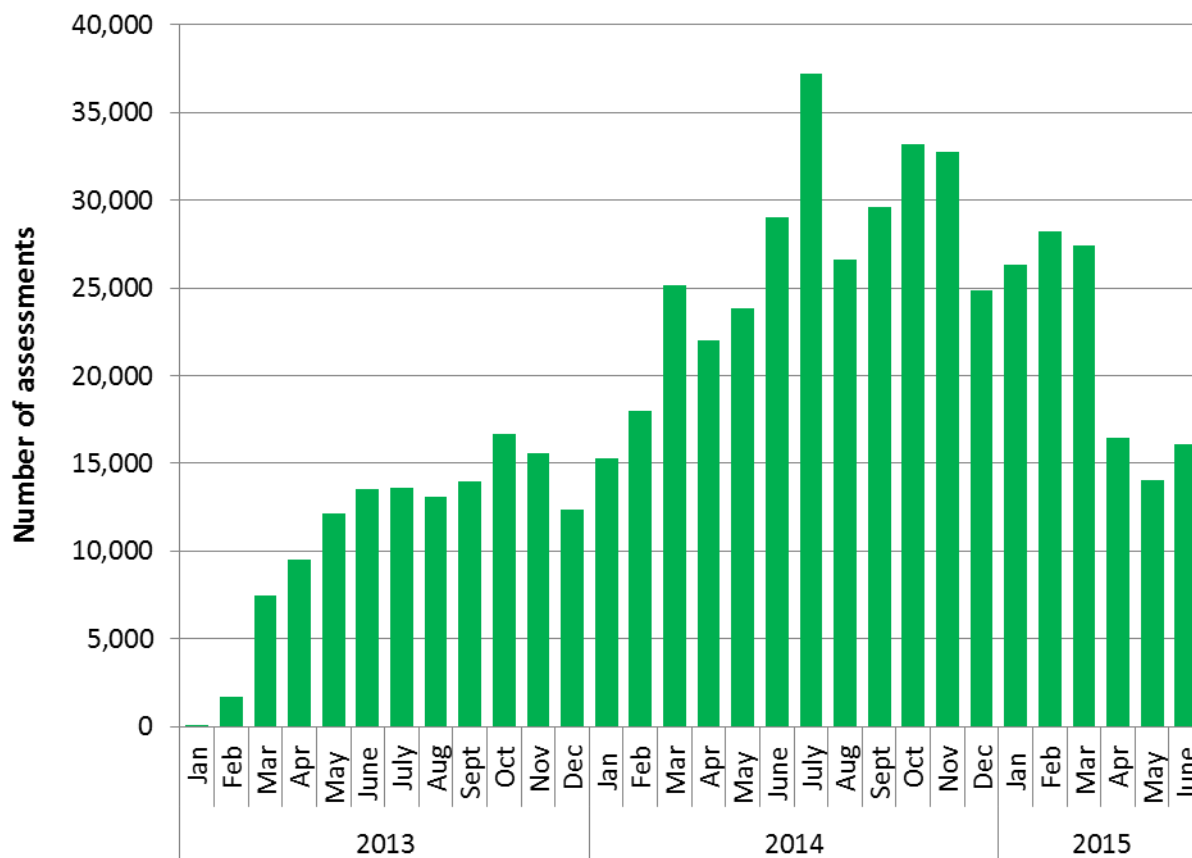
A provisional 1,541,000 measures were installed in around 1,252,000 properties through ECO, Cashback, GD Plans and the Green Deal Home Improvement Fund to the end of May 2015 (the latest month that we have complete data for), with around 33,000 measures installed in around 27,000 properties in May 2015 (Table 1 and Table 1a). The large majority of installed measures (96 per cent) were delivered through the Energy Company Obligation. The most prevalent measures were cavity wall insulation, loft insulation and boilers. Further detailed results of each of these delivery mechanisms are within the main commentary. This excludes measures installed but not captured by administrative data sources, i.e. using alternative finance (see page 12), but includes installed ECO measures eligible under the revised ECO legislation. The household figure also excludes a small number of duplicates (i.e. households with measures installed through more than one delivery mechanism).

### Green Deal Assessments, by month (Table 2, Chart 1)

The first step in the GD process involves a GD Assessor coming to the home, talking to the owner/occupier about their energy use and seeing if they can benefit from making energy efficiency improvements to their property. This leads to a Green Deal Advice Report (GDAR) being produced for the householder and lodged on a national register. The customer is then able to view the energy efficiency measures which have been recommended and understand the potential costs and savings. For more information on the [GD Assessment process see here](#).

At the end of June 2015 there were 575,936 GD Assessments lodged in total ([Chart 1](#)). The 16,071 GD Assessments in June was 14 per cent higher than the number in May 2015 (14,061) and 45 per cent lower than the number in June 2014. The low levels of GD Assessments reported in the last three months are likely to be as a result of lower levels of ECO measures installed. April 2015 was the start of ECO 2 period, and delivery at the start of the new reporting period has been relatively lower. This is likely due to obligated companies not yet having certainty of their remaining ECO 2 targets until Ofgem have completed their compliance checks of ECO 1 measures. Carbon Saving Target (CERO) and Carbon Saving Communities (CSCO) ECO measures are often accompanied with a GD Assessment.

Chart 1 - Number of Green Deal Assessments lodged, by month



**Green Deal Plans in unique properties, cumulative totals by month (Table 3, Table 3a, Table 3b, Chart 2)**

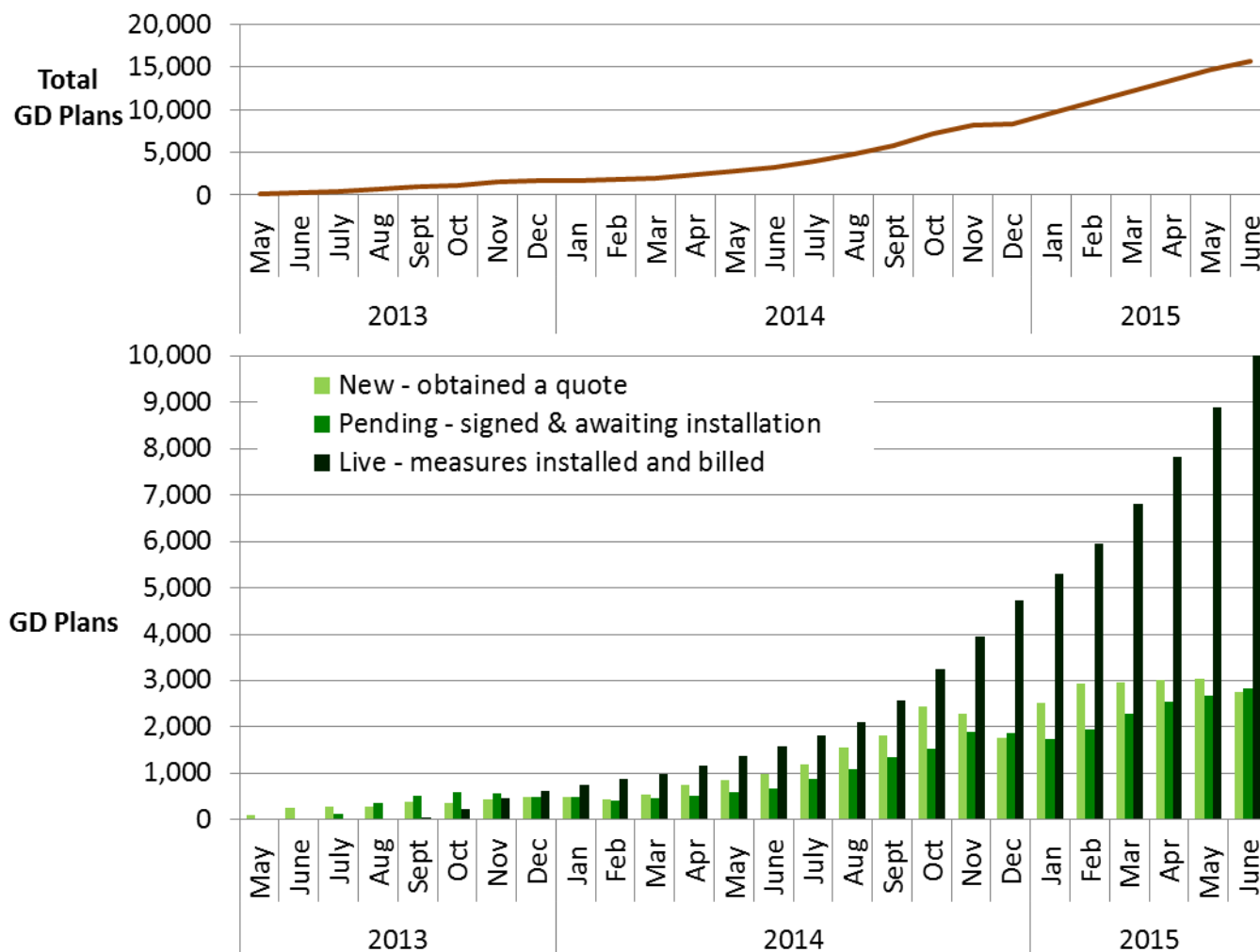
Following an Assessment, for householders who choose to take on any of the recommended measures, there are a number of routes to pay for the improvements. Some customers may choose GD finance to pay for part or all of their planned improvements, whilst others may choose to pay for measures out of savings or other sources of finance, and some may be part funded through ECO support.

For those who choose GD finance, there are three stages in the life cycle of a GD Plan. The **first stage** (a 'new' Plan) is after a customer has obtained a quote and confirmed they wish to proceed, the **second stage** (a 'pending' Plan) is when a Plan has been signed by the customer and progress is being made to install measures, whilst the **final stage** (a 'live' Plan) is after the measures have been installed and the energy supplier has all the information required to bill GD charges. For more detail on these stages, please see [Annex B](#).

In total, there were 15,596 GD Plans in the system in unique properties at the end of June 2015, up from 14,615 at the end of May 2015. The growth in the number of GD Plans in the system has been fairly steady in recent months. Of these 15,596 Plans, 2,759 were 'new' (quote accepted), another 2,838 were 'pending' (Plan signed) and 9,999 were 'live' (all measures installed), 64 per cent of all Plans. As 'new' and 'pending' GD Plans lead to installation of measures, they will be replaced as 'live' GD Plans in future monthly releases. The three reporting stages are presented in Table 3 and Chart 2.

The total number of measures installed using GD finance was 15,866 up to the end of June 2015 (see Table 3a). Boilers accounted for 31 per cent of measures installed, followed by photovoltaics (30 per cent), and solid wall insulation (15 per cent) (see Table 3b).

Chart 2 - Number of Green Deal Plans in unique properties, cumulative totals at end of each month, and by stages



### Green Deal Home Improvement Fund where payments have been made, by month of installation (Table 5, Table 5a, Chart 3, Chart 4)

The Green Deal Home Improvement Fund (GDHIF) is an incentive scheme open to all householders in England and Wales wanting to improve the energy efficiency of their homes. The scheme allows householders to choose one or both of two offers available and they are eligible to claim money back. GDHIF release 1 opened in June 2014 and closed to new applicants on 24 July 2014<sup>1</sup>. GDHIF release 2 commenced on 10 December 2014 (and closed to new Solid Wall Insulation applicants on 11 December 2014) with payments under GDHIF release 2 starting from January 2015. GDHIF release 3 commenced on 16 March 2015 (and closed to new Solid Wall Insulation applicants on 26 March 2015).

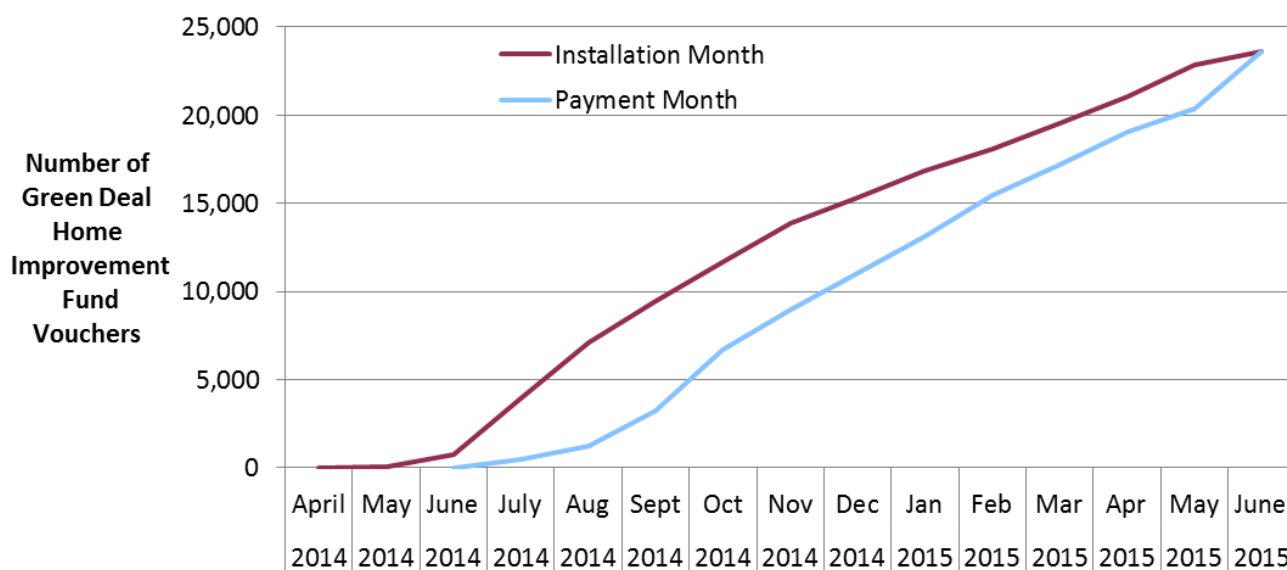
<sup>1</sup> Information on the number of Green Deal Home Improvement Fund (GDHIF) release 1 applications, vouchers issued and maximum value of vouchers issued was published on a weekly basis from 17 June 2014 until the scheme closed on 24 July 2014. Also included on a weekly basis from 17 December 2014 until 7 January 2015 were GDHIF application statistics on GDHIF release 2 and from 24 March 2015 until 26 March 2015 on GDHIF release 3, available here: <https://www.gov.uk/government/statistics/energy-savings-advice-service-esas-calls-and-green-deal-webpage-views>



By the end of June 2015, there were 38,833 active applications (releases 1, 2 and 3), with a total budget committed of around £171m, of which around £57m were still active applications yet to be redeemed. Just over half of GDHIF applications were accompanied with a Green Deal Advice Report, with the remainder accompanied with just an Energy Performance Certificate.

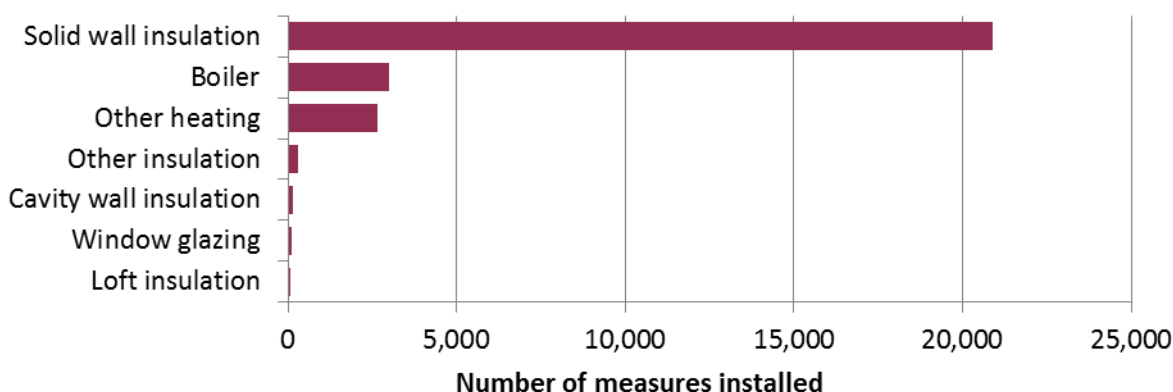
By the end of June 2015, 38,462 vouchers had been issued (releases 1, 2 and 3) from the active applications. Of these, 23,593 vouchers had been paid (following installation of 27,140 measures), with a value of £114.2 million. This is around 67 per cent of the £171 million total budget committed under releases 1, 2 and 3. Around £12.3 million payments were made in June from 3,237 vouchers, the highest amount paid in a month since February 2015.

Chart 3 – Cumulative number of Green Deal Home Improvement Fund vouchers where payments were made, by month of installation and by month of payment, at end of each month



Solid wall insulation was the main measure where GDHIF payments have been made (77 per cent of measures installed) followed by 'Boiler' of which all were gas boiler installations (11 per cent) and 'Other heating' of which the vast majority were flue gas heat recovery device installations (10 per cent). Of the 23,593 payments made, 11,647 included the Green Deal Advice Report (GDAR) refund (of up to £100 each), and 1,328 included the Home Buyer Bonus (of up to £500 each) (see [Table 5a](#)).

Chart 4 – Number of measures installed where GDHIF payments have been made, by the end of June 2015



## ECO measures installed by obligation, up to the end of May 2015 (Table 6, Table 6a, Chart 5, Chart 6)

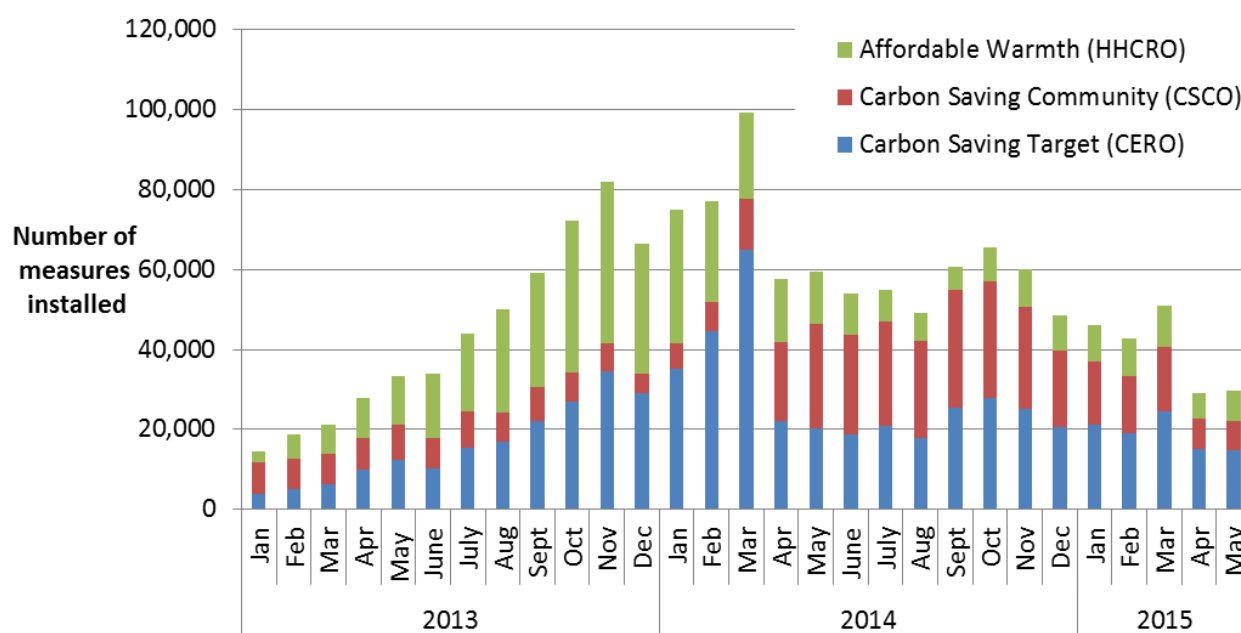
The [Energy Company Obligation](#) (ECO) was introduced in January 2013 to reduce energy consumption and support people at greater risk of living in fuel poverty. Information on measures installed under ECO is at a lag of a month compared to other figures presented in this release due to the time taken for information to be reported and verified. Hence, data on measures installed under ECO is presented until the end of May 2015.

All measures installed under ECO are provisional until the end of the obligation period as checks are undertaken. Checks will be completed by Ofgem for ECO 1 measures by late 2015. Users should note that, in order to produce the timeliest data possible, estimates in this report include a month of data that has yet to go through initial Ofgem validation checks (i.e. they are as reported by energy suppliers to Ofgem). Revisions to data are routinely included in releases and will be explained if they are large. This release uses revised data (for measures since the start of ECO up to the end of November 2014) which have been through further Ofgem processing as well as reflecting any changes (such as switching of obligation) that Energy Companies have notified Ofgem of.

Measures eligible under the revised ECO regulations (passed by Parliament on 5 December 2014) have been captured through the formal Ofgem reporting process. These have been included in the headline statistics, tables, and in the breakdowns below, if they were formally notified as ECO measures, in the month in which the measures were installed. This release includes the final month of measures installed under the ECO 1 period (January 2013 to March 2015) as well as the first two months of measures installed under ECO 2 period (April 2015 to March 2017).

Table 6 shows the provisional number of measures installed under ECO and Chart 5 shows the number of measures installed by [ECO obligation](#) and by installation month<sup>2</sup>.

Chart 5 - Provisional number of ECO measures installed, by obligation, in each month



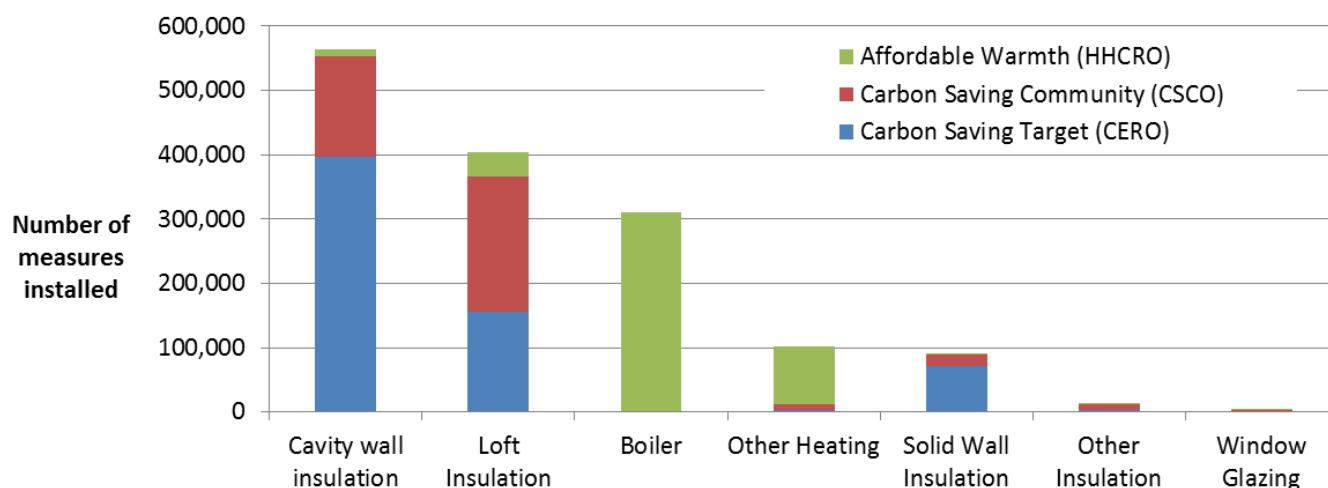
<sup>2</sup> ECO measures installed in earlier months can be notified at a later date under some circumstances. Some notified measures can be reallocated to different ECO obligations and so are subject to change.

Overall, 1,484,597 measures installed under ECO up to the end of May 2015, with 29,603 installed in May, one per cent higher than the 29,205 installed in April 2015. The number of measures installed peaked to date in March 2014 (99,413), in part, due to the incentive for energy companies to deliver Carbon Saving Target (CERO) measures by the end of March 2014 in order to benefit from the proposed levelisation which would provide uplift to CERO carbon scoring. Consequently the number of measures installed since March 2014 were lower, particularly now as ECO 1 period has ended, and there will not be certainty of their remaining ECO 2 targets until Ofgem complete their compliance checks of ECO 1 measures.

The split by obligation shows 43 per cent of measures installed under ECO were delivered through the Carbon Saving Target (CERO), 27 per cent were through Carbon Saving Communities (CSCO) and 30 per cent were through Affordable Warmth (HHCRO). Of all measures, four per cent were CSCO 'Rural' sub-obligation measures.

Table 6a and Chart 6 show the provisional number of measures installed under ECO, by measure type and [ECO obligation](#). This shows that the majority of the 1,484,597 measures installed under ECO were for cavity wall insulation (38 per cent), loft insulation (27 per cent) and boiler upgrades (21 per cent). Overall, 1,214,211 properties benefitted from one or more ECO measures being installed up to the end of May 2015 (Table 6a).

Chart 6 - Provisional number of measures installed under ECO, by measure type<sup>3</sup>, by obligation, up to end May 2015



Nearly half (45 per cent) of the 563,936 cavity wall insulation measures installed were delivered to Hard to Treat cavity wall properties<sup>4</sup>.

Over half (56 per cent) of the 403,694 loft insulation measures installed under ECO up to the end of May 2015 were top ups<sup>5</sup>.

Of the 89,064 solid wall insulation measures installed, the large majority (94 per cent) were External Wall Insulation.

<sup>3</sup> Boilers are only eligible under HHCRO. A full list of measure type eligibility by obligation is published here: <https://www.ofgem.gov.uk/ofgem-publications/83100/copyofcomeasurestable-mar2014url.pdf>

<sup>4</sup> Hard to Treat cavity wall properties are also sometimes known as 'hard-to-fill'. This means that they cannot be insulated using the same methods and/or products as a standard cavity wall.

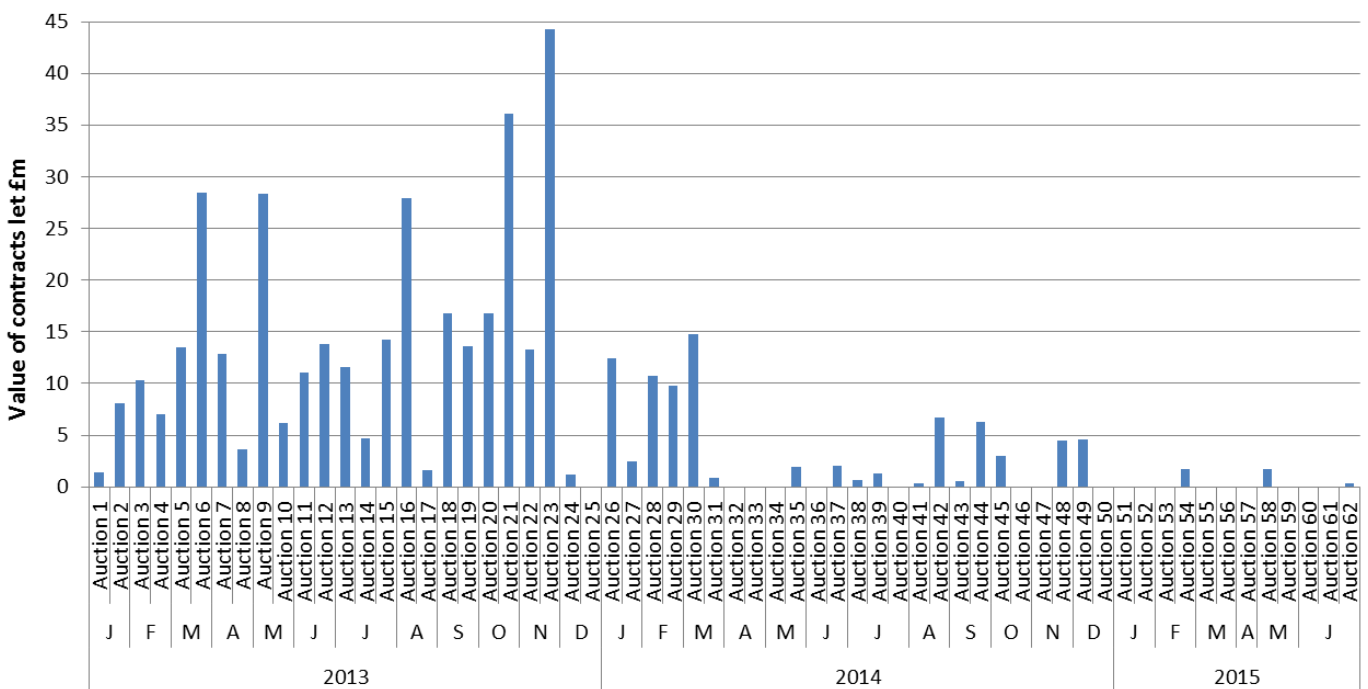
<sup>5</sup> Where there was at least 60mm of existing loft insulation.

## ECO brokerage, as at the end of June 2015 (Table 7, Chart 7)

The [ECO Brokerage](#) system operates as a fortnightly anonymous auction where providers can sell 'lots' of future measures of ECO Carbon Saving Target, ECO Carbon Saving Communities and ECO Affordable Warmth, to energy companies in return for ECO subsidy. Chart 7 shows that up to the end of June 2015 there have been 62 auctions, with a total value of contracts let worth £433.8 million. To date, over a quarter of auctions saw no contracts let.

The low levels of brokerage activity since March 2014 are likely to have been affected by a number of factors, including uncertainty around the period following the announced reduction in the obligation before new legislation came into force in December. Trading may have also been affected as a result of reaching the end to the first ECO obligation period, because contracts under brokerage are for future delivery (and there will not be certainty of ECO 2 targets until Ofgem complete their compliance checks of ECO 1 measures).

Chart 7 – Value of ECO brokerage contracts let, by auction



For more detail on the results of each auction, please see [ECO Brokerage](#).

### Measures not captured by administrative data sources

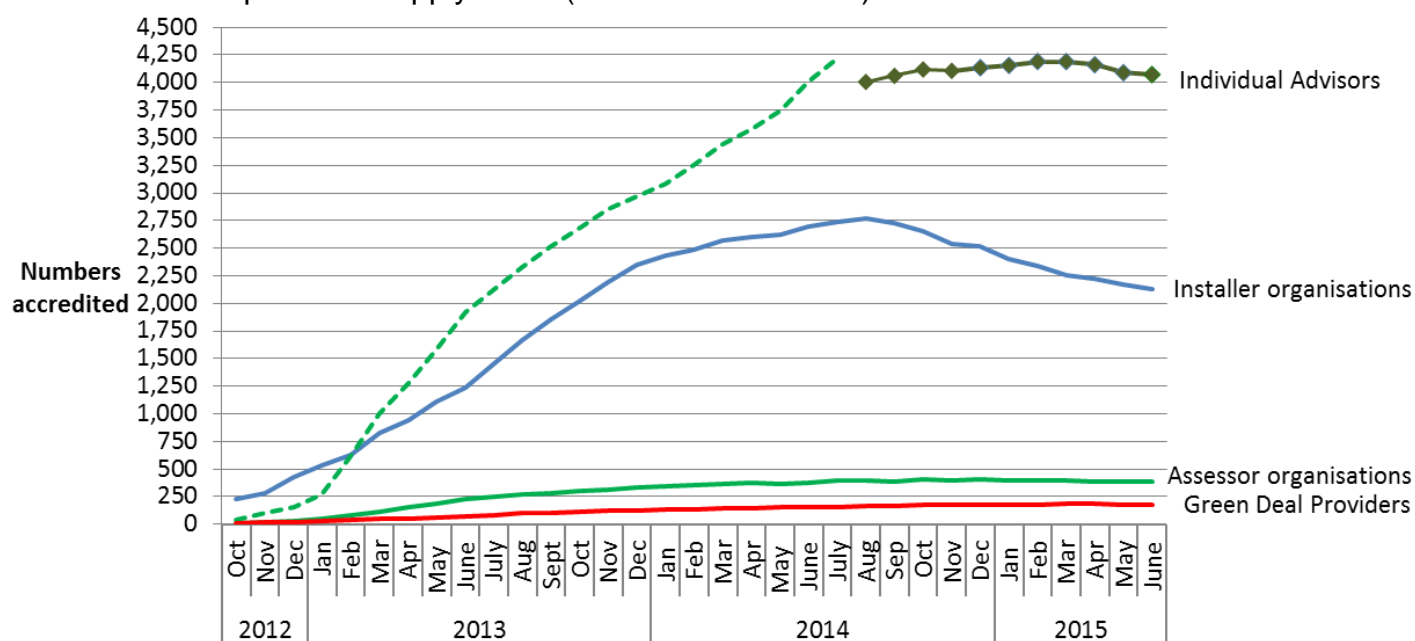
The figures in these tables do not include estimates of measures installed following a GD Assessment where the measure was not captured by administrative data sources (i.e. measures installed using alternative finance). Alternative sources of finance may include savings, payment from a landlord, housing association or Local Authority or other type of loan or credit, but would not have received funding from any of our reported routes. Additional work has been undertaken on this which is reported in the [quarterly statistical release](#).

### Supply chain, as at the end of June 2015 (Table 8, Chart 8)

The supply chain to support the GD has been developing since October 2012. This includes individual Advisors (who carry out and produce Green Deal Advice Reports) and Assessor organisations (who employ authorised GD Advisors), GD Providers (who quote for and arrange GD Plans with householders and arrange for the measures to be installed), and Installer

organisations<sup>6</sup> (who install energy efficiency improvements under the GD finance mechanism). Chart 8 shows the number of organisations and individuals who have been accredited as of the end of each month.

Chart 8 – Development of supply chain (cumulative numbers) at end of each month



The numbers of accredited GD Assessor organisations and individual Advisors completing their training and becoming accredited has fallen slightly in recent months. At the end of June 2015 the 387 Assessor organisations<sup>7</sup>, employing a total of 4,073 Advisors, had decreased slightly from May. The measurement of the number of individual Advisors<sup>8</sup> changed in August 2014 following improved data quality checks by the GD ORB. An improved automated deduplication process, implemented in August 2014, is more effective at identifying potential duplicate Advisor entries and has therefore reduced the total number of unique individual Advisors. The new series of individual Advisors is illustrated in Chart 8 by the dark green line with “♦” markers and is not directly comparable with the original series (dashed line). The number of GD Providers decreased from 181 at the end of May 2015 to 179 at the end of June 2015.

There were 2,129 Green Deal accredited installer organisations at the end of June 2015; this was the tenth consecutive month the number of installers had fallen since the peak of 2,774 reported at the end of August 2014 (a 23 per cent decrease). This decrease was due to the decision by some installer organisations to not renew their membership which was due for annual renewal, or due to installer organisations choosing to voluntarily exit, or withdrawal by certification body for non-compliance, or due to suspension/ceasing to trade. These organisations will provide a wide range of different measures and in different geographical locations (see [quarterly statistical release](#) for more details).

The Green Deal Oversight and Regulation Body (ORB) produces publically available information on the supply chain, and the latest figures are available by using the search tool on the [ORB website](#). There is also information available on [contacts in local areas](#).

<sup>6</sup> Unlike Advisors in Assessor organisations, individual Installers within an installer organisation do not need to register.

<sup>7</sup> The number of Assessor organisations can decrease due to an organisation’s authorisation being suspended and / or withdrawn, or because they have voluntarily withdrawn (e.g. by not renewing their certification).

<sup>8</sup> The number of Advisors is an approximation as there is no single point of entry to the Market for Assessors, Installers or Advisors to provide a unique participant ID.

# Annex A – Tables

Please note, percentages may not add up to totals due to rounding.

**Table 1: Provisional number of measures installed through ECO, Cashback, using Green Deal finance or Green Deal Home Improvement Fund, by month of installation**

Installation Month <sup>1</sup>	Delivery mechanism				Total number of measures installed <sup>5</sup>
	ECO <sup>2</sup>	Cashback <sup>3</sup>	Green Deal Finance Plans	Green Deal Home Improvement Fund <sup>4</sup>	
January 2013 <sup>6</sup>	14,495	0	0	0	14,495
February 2013	18,631	96	0	0	18,727
March 2013	21,332	136	0	0	21,468
April 2013	27,973	110	0	0	28,083
May 2013	33,264	145	0	0	33,409
June 2013	33,990	3,337	5	0	37,332
July 2013	44,081	1,266	7	0	45,354
August 2013	50,111	1,158	133	0	51,402
September 2013	59,209	1,012	170	0	60,391
October 2013	72,373	844	526	0	73,743
November 2013	82,083	787	469	0	83,339
December 2013	66,564	472	433	0	67,469
January 2014	75,013	498	275	0	75,786
February 2014	77,151	677	310	0	78,138
March 2014	99,413	1,069	265	0	100,747
April 2014	57,769	945	385	22	59,121
May 2014	59,447	973	481	73	60,974
June 2014	53,871	1,934	391	670	56,866
July 2014	54,916	157	561	4,424	60,058
August 2014	49,098	60	625	4,138	53,921
September 2014	60,804	20	1,051	2,665	64,540
October 2014	65,660	0	1,148	2,449	69,257
November 2014	60,049	0	1,120	2,284	63,453
December 2014	48,689	0	906	1,569	51,164
January 2015	46,159	0	881	1,747	48,787
February 2015	42,797	0	920	1,271	44,988
March 2015	50,847	0	1,172	1,609	53,628
April 2015	29,205	0	1,162	1,567	31,934
May 2015	29,603	0	1,295	1,818	32,716
<b>Total to date</b>	<b>1,484,597</b>	<b>15,696</b>	<b>14,691</b>	<b>26,306</b>	<b>1,541,290</b>

<sup>1</sup> Measures installed in earlier installation months can be notified at a later date under some circumstances.

<sup>2</sup> Revised ECO regulations were passed by Parliament on 5 December 2014. Measures eligible under the revised regulations have been included in the table.

<sup>3</sup> Cashback figures do not include any measures from the Cashback Exception process.

<sup>4</sup> The Green Deal Home Improvement Fund was only available from June 2014.

<sup>5</sup> Some measures may have been installed through more than one delivery mechanism and there is therefore a small level of double counting. This has not been estimated in the table.

<sup>6</sup> Includes some measures installed between October and December 2012.

**Table 1a: Provisional number of individual households that have had measures installed through ECO, Cashback, using Green Deal finance or Green Deal Home Improvement Fund, by month of installation**

Installation Month <sup>1</sup>	Delivery mechanism				Total number of individual households
	ECO <sup>2</sup>	Cashback <sup>3</sup>	Green Deal Finance Plans	Green Deal Home Improvement Fund <sup>4</sup>	
January 2013 <sup>5</sup>	12,891	0	0	0	12,891
February 2013	16,604	95	0	0	16,699
March 2013	18,895	133	0	0	19,028
April 2013	24,744	109	0	0	24,853
May 2013	29,627	143	0	0	29,770
June 2013	30,294	3,302	0	0	33,596
July 2013	38,388	1,172	1	0	39,561
August 2013	41,309	1,099	11	0	42,419
September 2013	48,629	954	45	0	49,628
October 2013	58,117	789	162	0	59,068
November 2013	65,731	725	239	0	66,695
December 2013	52,918	444	168	0	53,530
January 2014	59,923	465	120	0	60,508
February 2014	61,533	604	137	0	62,274
March 2014	80,552	973	112	0	81,637
April 2014	45,623	826	183	20	46,652
May 2014	47,521	894	194	72	48,681
June 2014	43,012	1,800	215	638	45,665
July 2014	45,210	150	228	3,201	48,789
August 2014	40,431	51	277	3,132	43,891
September 2014	50,436	15	489	2,363	53,303
October 2014	53,676	0	658	2,253	56,587
November 2014	49,124	0	722	2,147	51,993
December 2014	39,180	0	760	1,452	41,392
January 2015	36,882	0	585	1,568	39,035
February 2015	34,144	0	658	1,180	35,982
March 2015	41,418	0	845	1,512	43,775
April 2015	23,616	0	1,008	1,500	26,124
May 2015	23,783	0	1,070	1,740	26,593
Households with measures installed through more than one delivery mechanism <sup>6</sup>					-8,800
<b>Total to date</b>	<b>1,214,211</b>	<b>14,743</b>	<b>8,887</b>	<b>22,778</b>	<b>1,251,819</b>

<sup>1</sup> Measures installed in earlier installation months can be notified at a later date under some circumstances.

<sup>2</sup> Where a household has measures installed in two or more months, the earliest installation month is recorded. Revised ECO regulations were passed by Parliament on 5 December 2014. Measures eligible under the revised regulations are included in the table.

<sup>3</sup> Excludes any households that have had measures installed solely through the Cashback Exception process.

<sup>4</sup> Where a household has measures installed in two or more months, the earliest installation month is recorded. This is lower than the number of vouchers issued as it is possible for there to be more than one GDHIF voucher paid per household.

<sup>5</sup> Includes some measures installed between October and December 2012.

<sup>6</sup> The rounded estimate of households with measures installed through more than one delivery mechanism is based on matched records for 98% of cases.

**Table 2: Number of Green Deal Assessments<sup>1</sup> and cumulative total, by month**

Month	Total in Month	Cumulative Total
	Green Deal Assessments	Green Deal Assessments
January 2013	74	74
February 2013	1,729	1,803
March 2013	7,491	9,294
April 2013	9,522	18,816
May 2013	12,146	30,962
June 2013	13,517	44,479
July 2013	13,645	58,124
August 2013	13,087	71,211
September 2013	13,965	85,176
October 2013	16,672	101,848
November 2013	15,595	117,443
December 2013	12,385	129,828
January 2014	15,267	145,095
February 2014	17,998	163,093
March 2014	25,138	188,231
April 2014	22,012	210,243
May 2014	23,811	234,054
June 2014	29,018	263,072
July 2014	37,192	300,264
August 2014	26,625	326,889
September 2014	29,629	356,518
October 2014	33,191	389,709
November 2014	32,734	422,443
December 2014	24,874	447,317
January 2015	26,357	473,674
February 2015	28,238	501,912
March 2015	27,453	529,365
April 2015	16,439	545,804
May 2015 <sup>2</sup>	14,061	559,865
June 2015	16,071	575,936

<sup>1</sup> As measured by the number of Green Deal Advice Reports lodged on the central register against unique property.

<sup>2</sup> The number of Assessments in May 2015 has been revised from 13,938 to 14,061 due to a data extraction error by the data supplier.



**Table 3: Number of Green Deal Plans<sup>1,2,3,4</sup> in unique properties, cumulative total by month**

Month	'New' <sup>1</sup> Green Deal Plans	'Pending' <sup>2</sup> Green Deal Plans	'Live' <sup>3</sup> Green Deal Plans	'Total' <sup>5</sup> Green Deal Plans
May 2013	98	2	0	100
June 2013	270	36	0	306
July 2013	286	132	1	419
August 2013	293	372	12	677
September 2013	392	505	57	954
October 2013	360	594	219	1,173
November 2013	448	572	458	1,478
December 2013	493	493	626	1,612
January 2014	494	481	746	1,721
February 2014	445	426	883	1,754
March 2014	532	473	995	2,000
April 2014	756	505	1,178	2,439
May 2014	863	593	1,372	2,828
June 2014	986	661	1,587	3,234
July 2014	1,192	891	1,815	3,898
August 2014	1,547	1,098	2,092	4,737
September 2014	1,808	1,347	2,581	5,736
October 2014	2,434	1,534	3,239	7,207
November 2014	2,285	1,887	3,961	8,133
December 2014	1,763	1,864	4,721	8,348
January 2015	2,525	1,752	5,306	9,583
February 2015	2,943	1,939	5,964	10,846
March 2015	2,970	2,297	6,809	12,076
April 2015	3,001	2,537	7,817	13,355
May 2015	3,045	2,683	8,887	14,615
June 2015	2,759	2,838	9,999	15,596

<sup>1</sup> A 'new' Green Deal Plan is after a customer has obtained a quote from a Green Deal Provider and confirmed they wish to proceed. The Green Deal Provider has then successfully requested a Green Deal Plan record prior to signature by the customer.

<sup>2</sup> A 'pending' Green Deal is when a Green Deal Plan has been signed by the customer, progress is being made to install Green Deal Plan measures (measures are installed during the 'pending' stage) and the Plan is being finalised so that charging can start.

<sup>3</sup> A 'live' Green Deal Plan is after all the measures have been installed in the property, the information required to disclose the plan to future bill payers has been attached to the Plan and the energy supplier has all the information required to bill Green Deal charges. 27 properties have two 'live' Green Deal Plans, so there are 10,026 'live' Green Deal Plans at the end of June 2015.

<sup>4</sup> There are an additional 219 'completed' Green Deal Plans at the end of June 2015. These are when Plans have been paid off in full after all the measures have been installed in the property, and therefore the Plan is no longer active on the system.

<sup>5</sup> Total Green Deal Plans are the total number of Plan identifiers for unique properties on the Central Charge Database at the end of reporting month.

**Table 3a: Number of measures installed using Green Deal finance<sup>1,2</sup>, and cumulative total<sup>3</sup>, by installation month<sup>4</sup>**

Installation Month	Total in Month	Cumulative Total
	Green Deal Measures	Green Deal Measures
June 2013	5	5
July 2013	7	12
August 2013	133	145
September 2013	170	315
October 2013	526	841
November 2013	469	1,310
December 2013	433	1,743
January 2014	275	2,018
February 2014	310	2,328
March 2014	265	2,593
April 2014	385	2,978
May 2014	481	3,459
June 2014	391	3,850
July 2014	561	4,411
August 2014	625	5,036
September 2014	1,051	6,087
October 2014	1,148	7,235
November 2014	1,120	8,355
December 2014	906	9,261
January 2015	881	10,142
February 2015	920	11,062
March 2015	1,172	12,234
April 2015	1,162	13,396
May 2015	1,295	14,691
June 2015	1,175	15,866

<sup>1</sup> As measured by the number of measures installed using Green Deal finance where a Green Deal Plan has gone 'live' or 'completed' following being 'live'.

<sup>2</sup> There may be a number of measures which have also been reported under ECO or Cashback.

<sup>3</sup> The number of measures installed using Green Deal finance in earlier installation months are subject to revision as Green Deal Plans may become 'live' after the month of installation.

<sup>4</sup> The number of measures installed using Green Deal finance in any month other than the latest month are not directly comparable with the number of 'live' Green Deal Plans for each of those respective months. This is because some measures may have been installed in a month previous to when the corresponding Green Deal Plan went 'live'.

**Table 3b: Number of measures by measure type\* installed using Green Deal finance<sup>1,2</sup>, up to end of June 2015**

Measure Types	Total number of Measures installed using Green Deal finance <sup>3</sup>	Percentage of Measures
<b>Boiler</b>	4,846	31
<b>Cavity Wall Insulation</b>	366	2
<b>Lighting</b>	158	1
<b>Loft Insulation</b>	1,069	7
<b>Micro-generation</b>	4,737	30
<b>Other Heating</b>	1,313	8
<b>Other Insulation</b>	1,017	6
<b>Solid Wall Insulation</b>	2,325	15
<b>Window Glazing</b>	35	0
<b>Total</b>	<b>15,866</b>	<b>100</b>

<sup>1</sup> As measured by the number of measures installed using Green Deal finance where a Green Deal Plan has gone 'live', or 'completed' following being 'live'.

<sup>2</sup> There may be a small number of measures which have also been reported under ECO or Cashback.

<sup>3</sup> The number of measures installed using Green Deal finance are subject to revision as Green Deal Plans may become 'live' after the month of installation.

\*For the full list of measure types, please see Table 3b in Excel [here](#).

**Table 4: Number and value of Cashback vouchers paid, and cumulative total, by installation month, England and Wales only**

Installation Month	Payments made <sup>1</sup>	
	Number	Value (£)
February 2013	95	25,750
March 2013	133	35,990
April 2013	109	29,510
May 2013	143	40,192
June 2013	3,302	896,305
July 2013	1,172	330,430
August 2013	1,099	309,646
September 2013	954	265,769
October 2013	789	228,878
November 2013	725	233,746
December 2013	444	141,696
January 2014	465	150,763
February 2014	604	255,133
March 2014	973	477,332
April 2014	826	503,921
May 2014	894	920,321
June 2014	1,800	2,810,844
July 2014	150	65,370
August 2014	51	61,700
September 2014	15	15,100
<b>Sub-total</b>	<b>14,743</b>	<b>7,798,394</b>
Cashback Exception process <sup>2</sup>	2,686	6,793,361
Cashback uplift payments <sup>3</sup>		1,716,639
<b>Total to date</b>	<b>17,429</b>	<b>16,308,393</b>

<sup>1</sup> The Cashback scheme closed for applications at the end of June 2014 and all redemptions required measures to be installed before the end of September 2014. The standard payment system stopped making payments at the end of October 2014. Therefore the breakdown of payments made by month is the final summary.

<sup>2</sup> The Cashback Exception process has additionally paid 2,686 vouchers (following 2,686 exception applications), totalling £6.8m for solid wall insulation and warm air heating measures where those recommended measures are not displayed on the EPC. Of the total number of 2,686 exceptions, two were additional vouchers issued that were paid in December 2014 with a total value of £4,350.

<sup>3</sup> Vouchers redeemed on or after 13 December 2013 are eligible for higher rates for Cashback. The values reported in the table for Cashback vouchers paid between 13 December 2013 and 25 March 2014 are for the original Cashback amount.

**Table 4a: Number of measures installed with Cashback<sup>1,2</sup>, at the end of the Cashback Scheme<sup>3</sup>, England and Wales only**

Measure Types	Total number of Cashback measures delivered	Percentage of Measures
<b>Boiler</b>	<b>12,379</b>	<b>79</b>
Gas Boiler	12,308	78
Oil Boiler	71	0
<b>Cavity wall insulation</b>	<b>300</b>	<b>2</b>
<b>Loft Insulation</b>	<b>773</b>	<b>5</b>
Loft Insulation	762	5
Room in Roof Insulation	11	0
<b>Other Heating</b>	<b>12</b>	<b>0</b>
Electric Storage Heaters	1	0
Flue Gas Heat Recovery Devices	0	0
Heating Controls	11	0
Warm Air Units	0	0
Waste Water Heat Recovery Systems	0	0
<b>Other Insulation</b>	<b>60</b>	<b>0</b>
Draught Proofing	12	0
Flat Roof Insulation	23	0
Hot Water Cylinder Insulation	6	0
Passageway Walk-through Doors	9	0
Under Floor Insulation	10	0
<b>Solid Wall Insulation</b>	<b>2,108</b>	<b>13</b>
<b>Window Glazing</b>	<b>64</b>	<b>0</b>
Double Glazing	62	0
Secondary Glazing	2	0
<b>Total number of measures</b>	<b>15,696</b>	<b>100</b>

<sup>1</sup> More than one measure can be installed with Cashback per unique property.

<sup>2</sup> This table does not include any measures from the Cashback Exception process.

<sup>3</sup> The standard payment system stopped making payments at the end of October 2014 and all measures were installed before the end of September 2014. Therefore the number of Cashback measures delivered is the final summary as at the end of October 2014.

**Table 5: Number and value of Green Deal Home Improvement Fund vouchers paid, and cumulative total, by installation month, and by payment month, England and Wales only**

Month <sup>6</sup>	Active applications <sup>1</sup>	Vouchers issued <sup>2</sup>	Payments made <sup>3,4</sup> by installation month <sup>6</sup>		Payments made <sup>3,4</sup> by payment month	
	Number <sup>5</sup>		Number	Value (£)	Number	Value (£)
April 2014 <sup>7</sup>			20	52,808	0	0
May 2014			72	205,437	0	0
June 2014			638	3,438,314	0	0
July 2014			3,205	13,418,588	448	2,269,282
August 2014			3,140	14,333,848	756	3,172,666
September 2014			2,364	13,009,761	2,030	8,113,913
October 2014			2,256	12,899,556	3,452	16,385,712
November 2014			2,150	12,573,071	2,270	12,505,424
December 2014			1,452	8,498,967	2,104	11,860,439
January 2015			1,574	8,314,636	2,045	11,631,739
February 2015			1,188	5,381,279	2,395	13,166,934
March 2015			1,516	6,982,462	1,719	8,726,462
April 2015			1,508	5,766,058	1,839	8,714,302
May 2015			1,749	6,578,112	1,298	5,362,849
June 2015			761	2,786,470	3,237	12,329,643
<b>Total to date</b>	<b>38,833</b>	<b>38,462</b>	<b>23,593</b>	<b>114,239,366</b>	<b>23,593</b>	<b>114,239,366</b>

<sup>1</sup> GDHIF active applications include any vouchers issued, pending, or vouchers which have been paid, under GDHIF release 1, release 2 and release 3 funding. It excludes any vouchers which have been cancelled, rejected, superseded, expired or claim failed. The 38,833 active applications up to the end of June 2015 equates to a total budget committed of around £171m, meaning there are still applications to the value of £57m which are still active. GDHIF release 1 commenced on 17th June 2014 and the 17,464 active applications under release 1 at the end of June 2015 had a fund allocation of around £91m. GDHIF release 2 commenced on 10th December 2014 and the 4,771 active applications under release 2 have a fund allocation of around £18m. GDHIF release 3 commenced on 16th March 2015 and 16,598 active applications under release 3 have been included with fund allocation of around £62m.

<sup>2</sup> There may have been several vouchers issued for a single application where a customer has modified key elements of their application, but not all active applications have had a voucher issued. It is also possible to have more than one voucher issued and payment made per household. 38,462 vouchers have been issued, of which 17,464 were GDHIF release 1, 4,771 were release 2 and 16,227 GDHIF release 3 vouchers.

<sup>3</sup> Of the 23,593 payments made, 1,328 of these received the Home Buyer Bonus (of up to £500 each).

<sup>4</sup> Of the 23,593 payments made, 11,647 of these received the Green Deal Advice Report refund (of up to £100 each).

<sup>5</sup> Comparable applications and vouchers data are not available by month.

<sup>6</sup> The numbers of GDHIF payments made in early months have been revised. This is due to GDHIF redemptions being paid in later months. Where a household has measures installed in two or more months, the earliest installation month is recorded. This includes 17,378 payments under GDHIF release 1 to the value of £90.7m, 3,064 payments under GDHIF release 2 to the value of £11.8m and 3,151 payments under GDHIF release 3 to the value of £11.7m.

<sup>7</sup> The April 2014 figure includes a small number of payments where measures were installed that 'transferred' from the Cashback scheme.

**Table 5a: Number of measures installed through Green Deal Home Improvement Fund<sup>1</sup> up to end of June 2015, England and Wales only**

Measure Types	Total number of GDHIF measures delivered	Percentage of Measures
<b>Boiler</b>	<b>2,980</b>	<b>11</b>
Gas Boiler	2,980	11
<b>Cavity wall insulation</b>	<b>137</b>	<b>1</b>
<b>Loft Insulation</b>	<b>60</b>	<b>0</b>
Room in Roof Insulation	60	0
<b>Other Heating</b>	<b>2,661</b>	<b>10</b>
Electric Storage Heaters	2	0
Flue Gas Heat Recovery Devices	2,549	9
Warm Air Units	0	0
Waste Water Heat Recovery Systems	110	0
<b>Other Insulation</b>	<b>302</b>	<b>1</b>
Flat Roof Insulation	35	0
Passageway Walk-through Doors	158	1
Under Floor Insulation	109	0
<b>Solid Wall Insulation</b>	<b>20,876</b>	<b>77</b>
<b>Window Glazing</b>	<b>124</b>	<b>0</b>
Double/Triple Glazing	115	0
Secondary Glazing	9	0
<b>Total number of measures</b>	<b>27,140</b>	<b>100</b>

<sup>1</sup> More than one measure can be installed with Green Deal Home Improvement Fund per unique property.

**Table 6: Provisional number of ECO measures installed<sup>1</sup>, by obligation, by installation month**

Installation Month <sup>2</sup>	Obligation			Affordable Warmth (HHCRO)	Total number of ECO measures installed
	Carbon Saving Target (CERO)	Carbon Savings Community (CSCO)			
		of which 'Rural' sub-obligation			
January 2013 <sup>1</sup>	3,861	7,945	0	2,689	14,495
February 2013	5,166	7,372	0	6,093	18,631
March 2013	6,413	7,420	1	7,499	21,332
April 2013	10,016	7,930	2	10,027	27,973
May 2013	12,322	8,838	5	12,104	33,264
June 2013	10,280	7,697	2	16,013	33,990
July 2013	15,451	9,022	1	19,608	44,081
August 2013	16,990	7,123	0	25,998	50,111
September 2013	22,170	8,304	12	28,735	59,209
October 2013	26,822	7,473	25	38,078	72,373
November 2013	34,666	6,899	33	40,518	82,083
December 2013	29,046	4,851	69	32,667	66,564
January 2014	35,121	6,412	130	33,480	75,013
February 2014	44,519	7,495	369	25,137	77,151
March 2014	64,871	12,741	223	21,801	99,413
April 2014	21,963	20,018	1,340	15,788	57,769
May 2014	20,161	26,234	3,002	13,052	59,447
June 2014	18,694	25,005	4,312	10,172	53,871
July 2014	21,007	25,888	5,664	8,021	54,916
August 2014	17,962	24,239	5,132	6,897	49,098
September 2014	25,343	29,631	6,102	5,830	60,804
October 2014	27,882	29,129	7,148	8,649	65,660
November 2014	25,111	25,541	6,750	9,397	60,049
December 2014	20,736	19,023	4,435	8,930	48,689
January 2015	21,141	15,881	3,957	9,137	46,159
February 2015	19,149	14,278	3,453	9,370	42,797
March 2015	24,570	15,978	4,048	10,299	50,847
April 2015	15,262	7,356	1,600	6,587	29,205
May 2015	14,727	7,429	1,591	7,447	29,603
<b>Total to date<sup>3</sup></b>	<b>631,422</b>	<b>403,152</b>	<b>59,406</b>	<b>450,023</b>	<b>1,484,597</b>

<sup>1</sup> Includes some measures installed between October and December 2012.

<sup>2</sup> ECO measures installed in earlier installation months can be notified at a later date under some circumstances. Some notified measures can be reallocated to different ECO obligations and so are subject to change. Measures from earlier installation months can be rejected by Ofgem.

<sup>3</sup> Revised ECO regulations were passed by Parliament on 5 December 2014. Measures eligible under the revised regulations have been captured through the formal Ofgem reporting process, and have been included in the table in the month in which the measures were installed. This release uses revised data (for measures since the start of ECO up to the end of November 2014) which have been through further Ofgem processing as well as reflecting any changes (such as switching of obligation) that Energy Companies have notified Ofgem of. Therefore data have been revised in most months.



**Table 6a: Provisional number of ECO measures installed<sup>1</sup>, by measure type\*, by obligation, up to end May 2015**

Measure Types <sup>2</sup>	Obligation			Affordable Warmth (HHCRO)	Total number of ECO measures delivered	Percentage of ECO Measures
	Carbon Saving Target (CERO)	Carbon Savings Community (CSCO)	of which 'Rural' sub-obligation			
<b>Boiler</b>	N/A	N/A	N/A	311,269	311,269	21.0
<b>Cavity wall insulation</b>	397,340	155,958	24,734	10,638	563,936	38.0
<b>Loft Insulation</b>	155,977	209,945	31,623	37,772	403,694	27.2
<b>Micro-generation</b>	N/A	N/A	N/A	0	0	0
<b>Other Heating</b>	3,228	7,988	124	90,240	101,456	6.8
<b>Other Insulation</b>	2,577	9,390	1,289	94	12,061	0.8
<b>Solid Wall Insulation</b>	71,328	17,727	1,636	9	89,064	6.0
<b>Window Glazing</b>	972	2,144	0	1	3,117	0.2
<b>Total number of measures<sup>3</sup></b>	<b>631,422</b>	<b>403,152</b>	<b>59,406</b>	<b>450,023</b>	<b>1,484,597</b>	<b>100</b>
<b>Total number of unique properties<sup>4,5,6</sup></b>	<b>546,729</b>	<b>355,070</b>	<b>52,043</b>	<b>345,466</b>	<b>1,214,211</b>	

<sup>1</sup> As reported by energy suppliers to Ofgem in their monthly returns. Excludes any measures which have been rejected by Ofgem or withdrawn by obligated energy suppliers. Please see the accompanying [Methodology Note](#) for more details.

<sup>2</sup> Please see Ofgem's guidance for suppliers for more details on eligible measures.

<sup>3</sup> Revised ECO regulations were passed by Parliament on 5 December 2014. Measures eligible under the revised regulations have been captured through the formal Ofgem reporting process, and have been included in the table.

<sup>4</sup> Some ECO measures were installed in properties without recording the full address (e.g. blocks of flats), so there may be slightly more unique properties than recorded here.

<sup>5</sup> The total number of unique properties by obligation does not equal the total number of unique properties overall, as some properties have measures installed under more than one obligation.

<sup>6</sup> The total number of unique properties with ECO measures installed under CSCO and/or HHCRO is 685,226.

\*For the full list of measure types, please see Table 6a in Excel [here](#).

**Table 7: Number of ECO brokerage auctions<sup>1</sup> and total amount traded, by month**

Month	Number of auctions	Total amount traded
January 2013	2	£9.5m
February 2013	2	£17.4m
March 2013	2	£42.0m
April 2013	2	£16.6m
May 2013	2	£34.6m
June 2013	2	£25.0m
July 2013	3	£30.5m
August 2013	2	£29.6m
September 2013	2	£30.4m
October 2013	2	£52.9m
November 2013	2	£57.7m
December 2013	2	£1.2m
January 2014	2	£14.9m
February 2014	2	£20.5m
March 2014	2	£15.6m
April 2014	2	£.0m
May 2014	2	£1.9m
June 2014	2	£2.0m
July 2014	3	£1.9m
August 2014	2	£7.0m
September 2014	2	£6.8m
October 2014	2	£3.0m
November 2014	2	£4.5m
December 2014	2	£4.6m
January 2015	2	£.0m
February 2015	2	£1.7m
March 2015	2	£.0m
April 2015 <sup>2</sup>	1	£.0m
May 2015	2	£1.7m
June 2015	3	£0.4m
<b>Total to date</b>	<b>62</b>	<b>£433.8m</b>

<sup>1</sup> ECO brokerage auctions are scheduled to take place on a fortnightly basis.

<sup>2</sup> The platform provider, Crown Commercial Service experienced technical issues that affected the functionality of the ECO Brokerage trading platform. As a result auction 58 that was due to take place on Tuesday 21st April 2015 was postponed.

**Table 8: Number<sup>1</sup> of accredited Assessor organisations, individual Advisors, Green Deal Providers, and Installer organisations, cumulative totals by month**

Month <sup>2</sup>	Assessor organisations	Individual Advisors	Green Deal Providers	Installer organisations
October 2012	13	40	8	231
November 2012	18	100	15	285
December 2012	29	159	20	429
January 2013	48	270	25	531
February 2013	77	618	40	629
March 2013	108	1,003	48	831
April 2013	152	1,274	55	942
May 2013	182	1,582	60	1,108
June 2013	226	1,919	66	1,234
July 2013	248	2,129	79	1,457
August 2013	269	2,332	101	1,662
September 2013	286	2,517	107	1,853
October 2013	302	2,687	112	2,020
November 2013	314	2,855	123	2,190
December 2013 <sup>3</sup>	331	2,972	125	2,353
January 2014	344	3,087	130	2,432
February 2014	352	3,254	133	2,483
March 2014	364	3,445	143	2,575
April 2014	373	3,580	143	2,601
May 2014	369	3,747	151	2,619
June 2014	375	4,006	151	2,697
July 2014	392	4,219	156	2,735
August 2014 <sup>4</sup>	393	4,006	161	2,774
September 2014	391	4,061	162	2,729
October 2014	404	4,119	174	2,649
November 2014	398	4,107	176	2,539
December 2014	403	4,135	176	2,514
January 2015	400	4,156	177	2,397
February 2015	393	4,191	177	2,343
March 2015	394	4,190	184	2,258
April 2015	390	4,162	186	2,220
May 2015	390	4,090	181	2,168
June 2015	387	4,073	179	2,129

<sup>1</sup> Numbers include domestic, both domestic and non-domestic and a small number of non-domestic only participants.

<sup>2</sup> Months are approximate as they are based on numbers up to the end of the last full week in the month.

<sup>3</sup> December 2013 reporting period is up to the 23rd December 2013.

<sup>4</sup> The measurement of the number of individual Advisors changed in August 2014 and is not directly comparable with the number of Advisors up to the end of July 2014.

# Annex B – Background

## Green Deal

The [Green Deal](#) (GD) was launched on 28 January 2013 in England and Wales (and on 25 February 2013 in Scotland) with the aim of tackling a number of the key barriers to the take-up of energy efficiency measures.

Customers having GD Assessments undertaken have the choice of how they proceed. They might take the view that their home is sufficiently energy efficient, or that they want to finance work through a GD Plan or that they want to use alternative funding arrangements (e.g. use of savings).

The GD process for households is briefly described below:

**Step 1 – Assessment** – A GD Assessor will come to the home, talk to the owner/occupier about their energy use and see if they can benefit from making energy efficiency improvements to their property.

**Step 2 – Recommendations** – The GD Assessor will recommend improvements that are appropriate for the property and indicate whether they are expected to pay for themselves through reduced energy bills.

**Step 3 – Quotes** – GD Providers will discuss with the owner/occupier whether a GD Plan is right for them and quote for the recommended improvements, including the savings estimates, savings period, first year instalments and payment period for each improvement. A number of quotes can be obtained.

**Step 4 – Signing a Plan** – The customer chooses to proceed with a given provider and package of measures. The owner/occupier needs to obtain the necessary consent to make improvements to the property before they can agree terms with the GD Provider of a GD Plan<sup>9</sup>, at which stage they enter a cooling-off period<sup>10</sup>.

**Step 5 – Installation** – Once a GD Plan has been agreed, the Provider will arrange for the improvements to be made by a GD Installer. Once the installation has been completed a letter is sent to the Bill Payer and, at this stage, the GD Plan goes 'live'.

Repayments will be no more than what a typical household should save in energy costs.

It has only been possible for GD Providers to request Plans once commercial agreements between the Green Deal Finance Company and GD Providers have been agreed. It took GD Providers some time to prepare their businesses to bring offers to the market with GD Plans being created from May 2013 onwards for GD Providers who have finalised their offer to date.

For those who choose GD finance, there are **three stages** in the life cycle of a GD Plan for which reports are generated.

---

<sup>9</sup> The Plan is a contract between the owner/occupier and the Provider – it sets out the work that will be done and the repayments.

<sup>10</sup> For example, in the case of a GD Plan that is regulated by the Consumer Credit Act 1974, the consumer will have 14 days to withdraw from the part of the GD Plan which provides credit.

- the **first stage** (a 'new' GD Plan) is after a customer has obtained a quote from a GD Provider and confirmed they wish to proceed. The GD Provider has then successfully requested a GD Plan record prior to signature by the customer. It is possible that more than one GD Plan may be requested for each household.
- the **second stage** (a 'pending' GD Plan) is when a GD Plan has been signed by the customer, progress is being made to install GD Plan measures and the Plan is being finalised so that charging can start.
- the **final stage** (a 'live' GD Plan) is after the measures have been installed in the property, the information required to disclose the Plan to future bill payers has been attached to the Plan and the energy supplier has all the information required to bill GD charges. At this stage the daily charge has been confirmed along with the date from when the charge will be accrued on their electricity bill.

### Energy Company Obligation

The [Energy Company Obligation](#) (ECO) started on 1 January 2013 (although energy companies have been able to count against their targets measures delivered since 1 October 2012) and runs to 31 March 2015 for the ECO 1 period. ECO 2 commenced from April 2015 and is set to run until 31 March 2017. It broadly takes over from two previous schemes (Carbon Emissions Reduction Target - CERT - and Community Energy Saving Programme - CESP) and focuses on providing energy efficiency measures to low income and vulnerable consumers and those living in 'hard-to-treat' properties.

There are three main ECO obligations – The Carbon Saving Target (CERO); Carbon Saving Communities (CSCO) and Affordable Warmth (HHCRO).

Carbon Saving Target – This covers the installation of measures like solid wall and hard-to-treat cavity wall insulation, which ordinarily can't be financed solely through Green Deal Plans.

Carbon Saving Communities Obligation – This provides insulation measures to households in specified areas of low income. It also makes sure that 15 per cent of each supplier's obligation is used to upgrade more hard-to-reach low-income households in rural areas.

Affordable Warmth Obligation – This provides heating and insulation measures to consumers living in private tenure properties who receive particular means-tested benefits. This obligation supports low-income consumers who are vulnerable to the impact of living in cold homes, including the elderly, disabled and families.

### How do the Green Deal and ECO interact?

Following a GD Assessment there will be a range of measures which could improve the energy efficiency of the property. Some of these could be paid for through GD finance, up to the point where the expected annual cost will not exceed what a typical household should save in energy costs. However, depending on the measure or the property, other sources of finance may also be required. ECO funding could be one of these sources, for example for measures such as Solid Wall Insulation and hard-to-treat Cavity Wall insulation.

### Green Deal Cashback

The Cashback scheme closed at the end of June 2014. There will be no further applications for the Cashback scheme but vouchers were redeemed and paid until 30 September 2014.

The Cashback Scheme rewarded the first GD customers. It was a first-come, first served offer where householders can claim cash back from Government on energy saving improvements like insulation, front doors, windows and boilers with packages worth over £1,000. It was available for households in England and Wales.

For more information on the separate scheme that operates in Scotland please see the relevant [website](#). Statistics on this scheme can be found [here](#).

### Green Deal Home Improvement Fund

The Green Deal Home Improvement Fund (GDHIF) is an incentive scheme open to all householders in England and Wales wanting to improve the energy efficiency of their homes. The scheme allows householders to choose one or both of two offers available and they are eligible to claim up to £7,600. Householders could also claim a refund of up to £100 for a Green Deal Advice Report (GDAR). GDHIF release 1 closed to new applicants at 6:30pm on 24 July 2014. GDHIF release 2 commenced on 10 December 2014 and GDHIF release 3 commenced on 16 March 2015. For more information please see the [GDHIF website](#). For more information on the separate scheme that operates in Scotland please see the relevant [website](#). Statistics on this scheme can be found [here](#).

DECC published GDHIF application release 1 data on the gov.uk [website](#) on a weekly basis until the scheme closed, to assist businesses and households. This weekly series reported the number of applications, vouchers issued and maximum value of vouchers issued. Also included on a weekly basis from 17 December 2014 until 7 January 2015 (on the same [website](#)), were GDHIF application statistics on GDHIF release 2. A one-off publication was made on 12 December to show that funding allocated to Solid Wall Insulation applications reached its maximum allocation amount. Also included on a weekly basis from 24th March 2015 (on the same [website](#)), were GDHIF application statistics on GDHIF release 3. A one-off publication was made on 26 March 2015 to show that funding allocated to Solid Wall Insulation applications reached its maximum allocation amount.

This data was provided from the GDHIF administrator and was therefore provisional.

### ECO Brokerage

The [ECO Brokerage](#) system operates as a fortnightly anonymous auction where GD Providers can sell 'lots' of future measures of ECO Carbon Saving Target, ECO Carbon Saving Communities and ECO Affordable Warmth, to energy companies in return for ECO subsidy.

This market-based mechanism has been introduced to support an open and competitive market for the delivery of the ECO. Brokerage allows a range of GD providers to fairly compete on price to attract ECO support and enables energy suppliers to deliver their obligations at the lowest possible cost, thereby reducing the impact on customer energy bills.

Sellers (GD Providers) can make a competitive offer on brokerage by leveraging additional sources of finance, such as part funding measures through GD Finance, partnerships with local authorities, or driving down costs by economies of scale.

### The Supply Chain

To understand more about the organisations and infrastructure underpinning the GD, this report also includes a section summarising the trends in the number of GD Advisors (and Assessor organisations), the number of GD Providers and the number of GD Installer organisations.

# Annex C – Sources and Methodology

The estimates in this and future Statistical Release use administrative data generated as part of the GD and ECO processes.

There are seven main sources of information:

- Landmark – who manage the national lodgement of GD Assessments in England and Wales
- Energy Savings Trust (EST) – who manage the national lodgement of GD Assessments in Scotland
- Green Deal Central Charge Database – which manages the recording and administration of GD Plans
- Ofgem – who administer the Energy Company Obligation and collect information from energy companies on measures installed under ECO
- The Green Deal Oversight and Regulation Body (ORB) – who administer the certification of GD organisations (including Assessors, installers and providers)
- Data on ECO brokerage is publically available following each auction
- Capita – who administer the Cashback Scheme and the [Green Deal Home Improvement Fund](#)

This report uses data from Landmark and the Energy Savings Trust for numbers of lodged Assessments and on measures installed using GD finance, data from the Central Charge Database on GD Plans, data from the Cashback and Green Deal Home Improvement Fund Scheme Administrator on vouchers issued and measures installed, data from Ofgem on ECO measures, data from the ORB for the supply chain and the published data on ECO brokerage.

The statistics presented in this report are used by a wide range of organisations. Please see the accompanying methodology note [here](#) for more details.

## Revision Policy

As with any data collection with a short time lag between data receipt and published release, there may be some data quality issues to resolve. Therefore data in these monthly releases should be treated as provisional and subject to revision.

Any revisions will be marked in the data tables and for any significant revisions we will provide an explanation of the main reasons.

## Further Information and Feedback

Any enquiries or comments in relation to this statistical release should be sent to DECC's Household Energy Efficiency Statistics Team at the following email address:

[EnergyEfficiency.Stats@decc.gsi.gov.uk](mailto:EnergyEfficiency.Stats@decc.gsi.gov.uk)

Contact telephone: 0300 068 5106

The statistician responsible for this publication is Peter Antoniadou.

Further information on energy statistics is available at:

<https://www.gov.uk/government/organisations/department-of-energy-climate-change/about/statistics>

## Next Releases

All future publications of this series will be released mid-month to cover the preceding month, with publication dates available on the gov.uk website.

The next monthly publication is planned for publication at 9.30am on **20 August 2015** and will contain the latest available information on the number of GD Assessments, GD Finance Plans and GDHIF vouchers paid, measures installed, a summary of ECO brokerage and an overview of the supply chain.



© Crown copyright 2015  
Department of Energy & Climate Change  
3 Whitehall Place  
London SW1A 2AW  
[www.gov.uk/decc](http://www.gov.uk/decc)