

**Department for Environment, Food and Rural Affairs**

## **Dover to Deal MCZ**

### **Feature Maps**

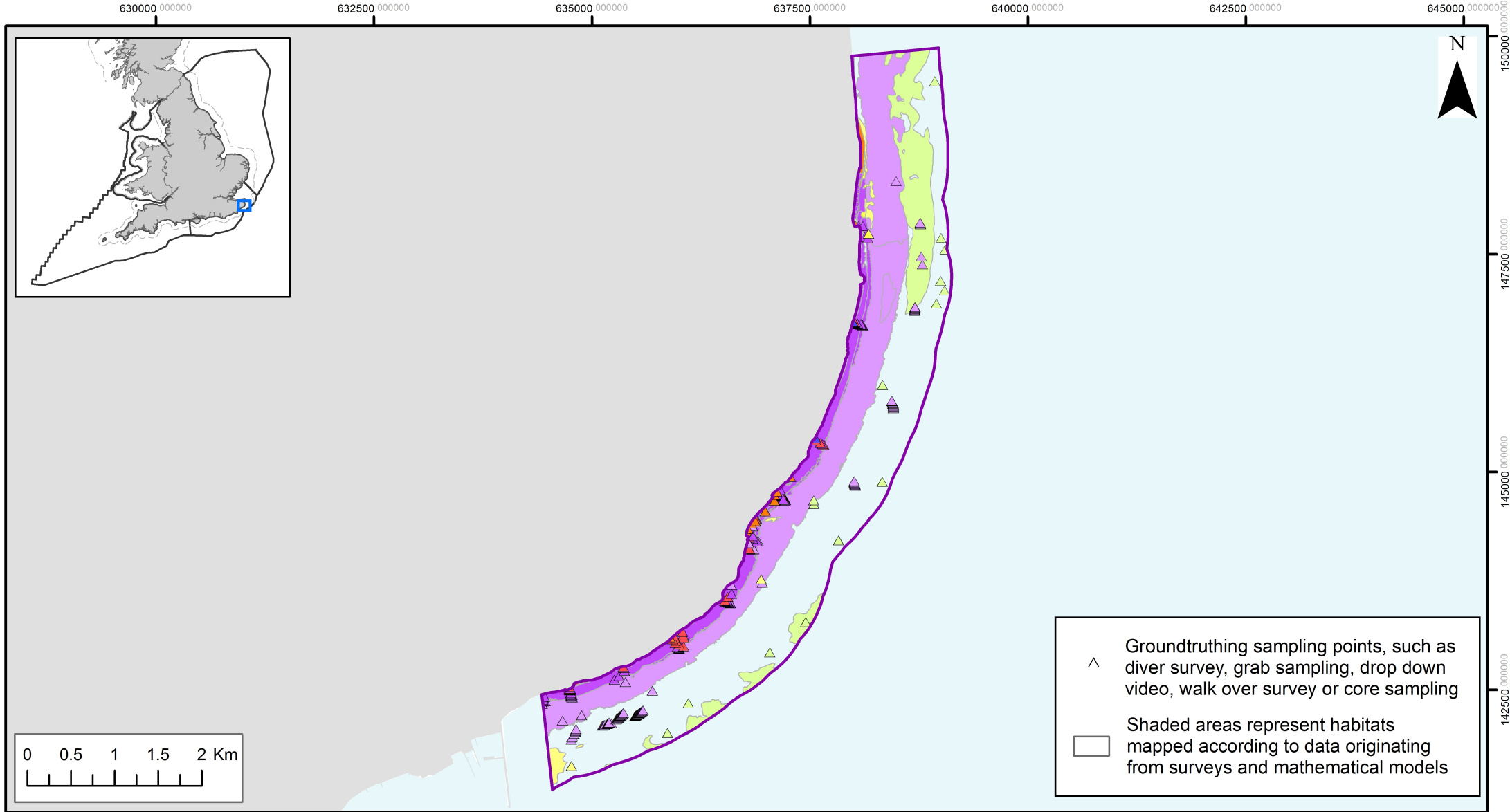
**17 January 2016**

The following maps show where the features protected by this Marine Conservation Zone (MCZ) are located.

There are two separate maps, to make it easier to see the locations of features. One map shows the broad-scale habitats, and the second shows features of conservation importance. Broad scale habitats represents habitats, and associated species that live on and in the habitat. Features of conservation importance are specific habitats and species that are known to be rare, threatened or declining in our seas.

A range of different types of surveys have been used to create these maps. The symbols on the map show where a sample has been taken, or where a feature has been recorded in a specific location. For many features, there is also shading to show the extent of the area in which the feature is found. For the broad scale habitat maps, this is created from survey data and using mathematical models. On the FOCI maps, the extent is only shown where a survey has confirmed that the feature exists in this whole area. More detailed information on the techniques used and the features themselves can be found here:

<http://nepubprod.appspot.com/publication/4594304593952768>



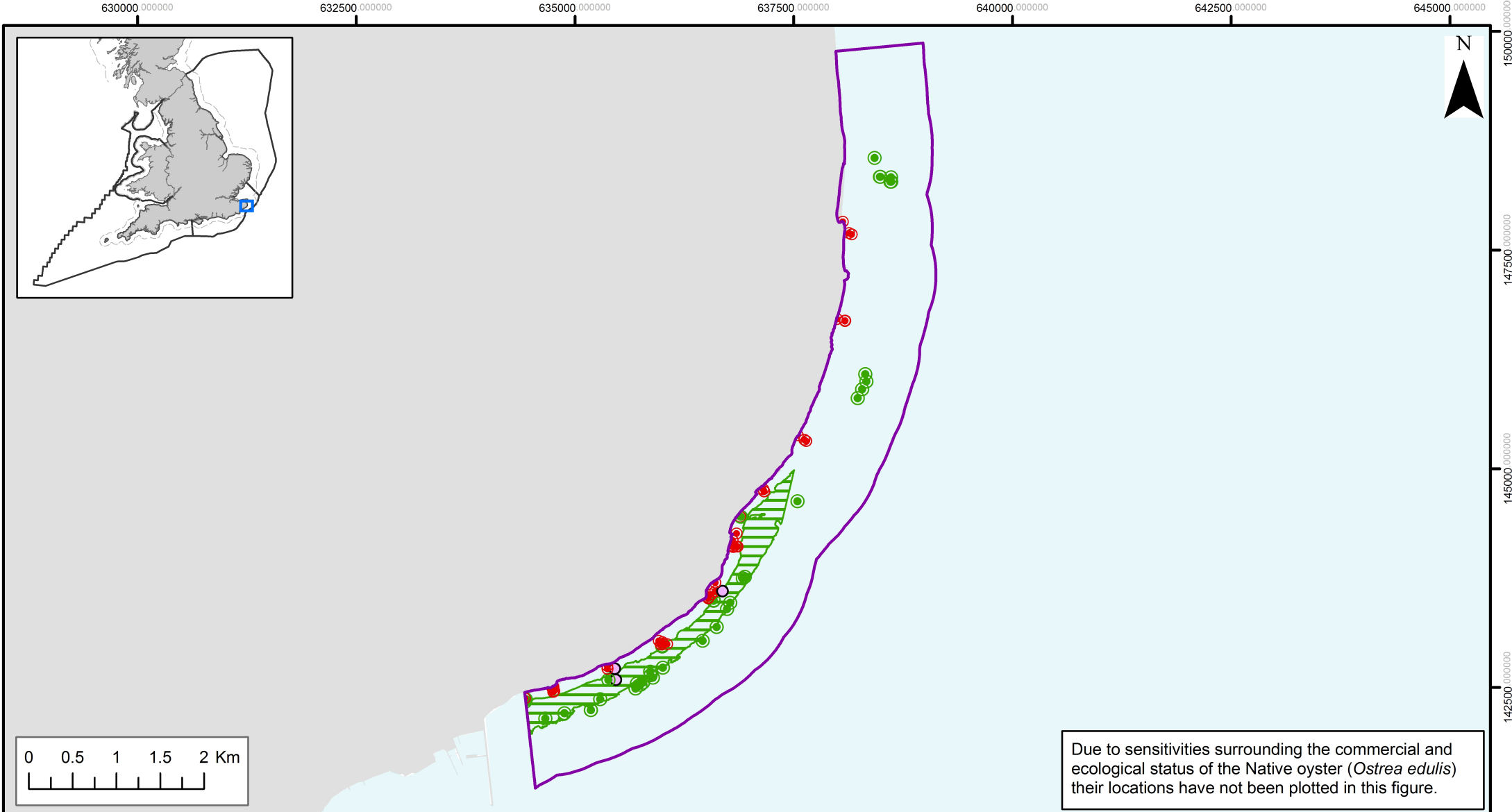
### Dover to Deal MCZ Broad Scale Habitats

- Marine Conservation Zone
- Regional MCZ Project Area
- 12nM Territorial Seas Limit
- Sea
- Land

### Features designated in 2016

- |   |   |
|---|---|
| <span style="background-color: red; display: inline-block; width: 15px; height: 10px; margin-right: 5px;"></span> High energy intertidal rock (A1.1)        | <span style="background-color: yellow; display: inline-block; width: 15px; height: 10px; margin-right: 5px;"></span> Intertidal sand and muddy sand (A2.2)          |
| <span style="background-color: purple; display: inline-block; width: 15px; height: 10px; margin-right: 5px;"></span> Moderate energy intertidal rock (A1.2) | <span style="background-color: lightpurple; display: inline-block; width: 15px; height: 10px; margin-right: 5px;"></span> Moderate energy infralittoral rock (A3.2) |
| <span style="background-color: blue; display: inline-block; width: 15px; height: 10px; margin-right: 5px;"></span> Low energy intertidal rock (A1.3)        | <span style="background-color: yellowgreen; display: inline-block; width: 15px; height: 10px; margin-right: 5px;"></span> Subtidal sand (A5.2)                      |
| <span style="background-color: orange; display: inline-block; width: 15px; height: 10px; margin-right: 5px;"></span> Intertidal coarse sediment (A2.1)      | <span style="background-color: lightgreen; display: inline-block; width: 15px; height: 10px; margin-right: 5px;"></span> Subtidal mixed sediments (A5.4)            |





Contains information from the Ordnance Survey  
 © Crown Copyright and database right 2015.  
 Ordnance Survey 100022021. UKHO Data  
 © British Crown Copyright. All rights reserved.  
 Permission Number Defra012015.001. This  
 product has been derived in part from material  
 obtained from the UK Hydrographic Office with  
 the permission of the Controller of Her Majesty's  
 Stationery Office and UK Hydrographic Office  
 (www.ukho.gov.uk). Map produced by  
 Natural England 2015.  
 Reference: Theme ID: 1477563  
 Map Projection: British National Grid



**Dover to Deal MCZ**  
**Features of Conservation Importance**

-  Marine Conservation Zone
-  Regional MCZ Project Area
-  12nM Territorial Seas Limit
-  Sea
-  Land

**Features designated in 2016**

-  Subtidal chalk
-  Subtidal chalk
-  Intertidal under boulder communities
-  Littoral chalk communities

Contains information from the Ordnance Survey  
 © Crown Copyright and database right 2015.  
 Ordnance Survey 100022021. UKHO Data  
 © British Crown Copyright. All rights reserved.  
 Permission Number Defra012015.001. This  
 product has been derived in part from material  
 obtained from the UK Hydrographic Office with  
 the permission of the Controller of Her Majesty's  
 Stationery Office and UK Hydrographic Office  
 (www.ukho.gov.uk). Map produced by  
 Natural England 2015.  
 Reference: Theme ID: 1477563  
 Map Projection: British National Grid



© Crown copyright 2016

You may re-use this information (excluding logos) free of charge in any format or medium, under the terms of the Open Government Licence v.3. To view this licence visit [www.nationalarchives.gov.uk/doc/open-government-licence/version/3/](http://www.nationalarchives.gov.uk/doc/open-government-licence/version/3/) or email [PSI@nationalarchives.gsi.gov.uk](mailto:PSI@nationalarchives.gsi.gov.uk)

This publication is available at [www.gov.uk/government/publications](http://www.gov.uk/government/publications)

Any enquiries regarding this publication should be sent to us at

[mcz@defra.gsi.gov.uk](mailto:mcz@defra.gsi.gov.uk)

PB 14398