



Department  
of Energy &  
Climate Change



# Domestic Green Deal and Energy Company Obligation in Great Britain, Monthly report

Statistical release: National Statistics

20 August 2015

© Crown copyright 2015

You may re-use this information (not including logos) free of charge in any format or medium, under the terms of the Open Government Licence.

To view this licence, visit [www.nationalarchives.gov.uk/doc/open-government-licence/](http://www.nationalarchives.gov.uk/doc/open-government-licence/) or write to the Information Policy Team, The National Archives, Kew, London TW9 4DU, or email: [psi@nationalarchives.gsi.gov.uk](mailto:psi@nationalarchives.gsi.gov.uk).

Any enquiries or comments in relation to this statistical release should be sent to DECC's Household Energy Efficiency Statistics Team at the following email address:

[EnergyEfficiency.Stats@decc.gsi.gov.uk](mailto:EnergyEfficiency.Stats@decc.gsi.gov.uk)

Contact telephone: 0300 068 5106

This document is also available from our website at

<https://www.gov.uk/government/collections/green-deal-and-energy-company-obligation-eco-statistics>

# Contents

Charts .....	4
National Statistics .....	4
<b>Executive summary .....</b>	<b>5</b>
Introduction .....	5
Key points .....	5
<b>Detailed Results .....</b>	<b>6</b>
All measures installed up to end June 2015 (Table 1 and Table 1a) .....	6
Green Deal Assessments, by month (Table 2, Chart 1) .....	6
Green Deal Plans in unique properties, cumulative totals by month (Table 3, Table 3a, Table 3b, Chart 2) .....	7
Green Deal Home Improvement Fund where payments have been made, by month of installation (Table 5, Table 5a, Chart 3, Chart 4) .....	8
ECO measures installed by obligation, up to the end of June 2015 (Table 6, Table 6a, Chart 5, Chart 6) .....	10
ECO brokerage, as at the end of July 2015 (Table 7, Chart 7) .....	12
Measures not captured by administrative data sources .....	12
Supply chain, as at the end of July 2015 (Table 8, Chart 8) .....	12
<b>Annex A – Tables .....</b>	<b>14</b>
<b>Annex B – Background .....</b>	<b>28</b>
Green Deal .....	28
Energy Company Obligation .....	29
Green Deal Cashback .....	29
Green Deal Home Improvement Fund .....	30
ECO Brokerage .....	30
The Supply Chain .....	30
<b>Annex C – Sources and Methodology .....</b>	<b>31</b>
Revision Policy .....	31
Further Information and Feedback .....	31
Next Releases .....	32

## Charts

Chart 1 - Number of Green Deal Assessments lodged, by month .....	7
Chart 2 - Number of Green Deal Plans in unique properties, cumulative totals at end of each month, and by stages.....	8
Chart 3 – Cumulative number of Green Deal Home Improvement Fund vouchers where payments were made, by month of installation and by month of payment, at end of each month	9
Chart 4 – Number of measures installed where GDHIF payments have been made, by the end of July 2015.....	9
Chart 5 - Provisional number of ECO measures installed, by obligation, in each month .....	10
Chart 6 - Provisional number of measures installed under ECO, by measure type, by obligation, up to end June 2015 .....	11
Chart 7 – Value of ECO brokerage contracts let, by auction.....	12
Chart 8 – Development of supply chain (cumulative numbers) at end of each month .....	13



## National Statistics

This is a National Statistics publication.

The United Kingdom Statistics Authority has designated these statistics as National Statistics, in accordance with the Statistics and Registration Service Act 2007 and signifying compliance with the UK Statistics Authority: Code of Practice for Official Statistics. The Statistics Authority published its report on 12 June 2014:

<http://www.statisticsauthority.gov.uk/assessment/assessment/assessment-reports/index.html>.

Designation can be broadly interpreted to mean that the statistics:

- meet identified user needs
- are well explained and readily accessible
- are produced according to sound methods, and
- are managed impartially and objectively in the public interest

Once statistics have been designated as National Statistics it is a statutory requirement that the Code of Practice shall continue to be observed.

# Executive summary

## Introduction

This release presents the latest statistics on the Green Deal (GD) up to the end of July 2015 and the Energy Company Obligation (ECO) up to the end of June 2015.

For more details about the GD/ECO schemes, please see [Annex B](#). More detailed analysis of GD Assessments lodged, measures installed under Cashback and the Green Deal Home Improvement Fund and provisional measures installed under ECO up to the end of March 2015 are also available in the [quarterly statistical release](#).

DECC launched a [user consultation](#) on 20 August, for 6 weeks, to assess impacts on user needs of making changes to this, the headline (monthly), and the detailed (quarterly) National Statistic series on Green Deal, ECO and insulation statistics.

## Key points

- Around 1.57 million measures were installed in around 1.27 million properties through ECO, Cashback, GD Plans and the Green Deal Home Improvement Fund to the end of June 2015 (the latest month that we have complete data for). The large majority of installed measures (96 per cent) were delivered through ECO.
- GD Assessments – 590,033 were lodged up to the end of July 2015 (Chart 1). The 14,097 GD Assessments in July was 12 per cent lower than the number in June 2015 (16,071) and 62 per cent lower than the number in July 2014.
- GD Plans – 16,456 households had GD Plans in progress at the end of July 2015, six per cent more than the 15,596 at the end of June 2015. Of these, 2,049 were ‘new’ (quote accepted), another 3,192 were ‘pending’ (Plan signed) and 11,215 were ‘live’ (all measures installed), 68 per cent of all Plans (Chart 2).
- Green Deal Home Improvement Fund – by the end of July 2015, there were 38,484 active applications under releases 1, 2 and 3. Of these, 25,908 vouchers had been paid (following installation of 29,669 measures), with a value of £122.8m. This is around 73 per cent of the £168m total budget committed under releases 1, 2 and 3. Around £8.5m payments were made in July from 2,317 vouchers. Over three-quarters of the measures installed were solid wall insulation (78 per cent).
- ECO measures – provisional figures show there were 1,504,898 measures installed under ECO up to the end of June 2015, with 33,091 installed in June, 12 per cent higher than the 29,603 installed in May 2015.
- Of all notified ECO measures installed to date, 38 per cent were for cavity wall insulation, 27 per cent were for loft insulation, and 21 per cent were for boiler upgrades. All solid wall insulation types accounted for six per cent (Chart 6).
- Through ECO, the Affordable Warmth and the Carbon Savings Community obligations combined have delivered 861,000 measures in around 691,000 low income and vulnerable households, or households in specified areas of low income.

## Detailed Results

This section of the report provides the latest available information on different elements of the Green Deal (GD) and ECO. This includes the number of Assessments and GD Plans, Cashback and GDHIF vouchers spent, measures installed through GDHIF, Green Deal Plans and ECO, a summary of ECO brokerage and an overview of the supply chain. Data on GD are presented to the end of July 2015 in this release, whilst ECO is presented to the end of June 2015. Aggregate data on all measures installed are also presented to the end of June 2015.

The GD and ECO [quarterly statistical release](#) provides a range of analysis and further breakdowns on Assessments lodged, GDHIF measures installed and provisional ECO measures installed to the end of March 2015.

### All measures installed up to end June 2015 (Table 1 and Table 1a)

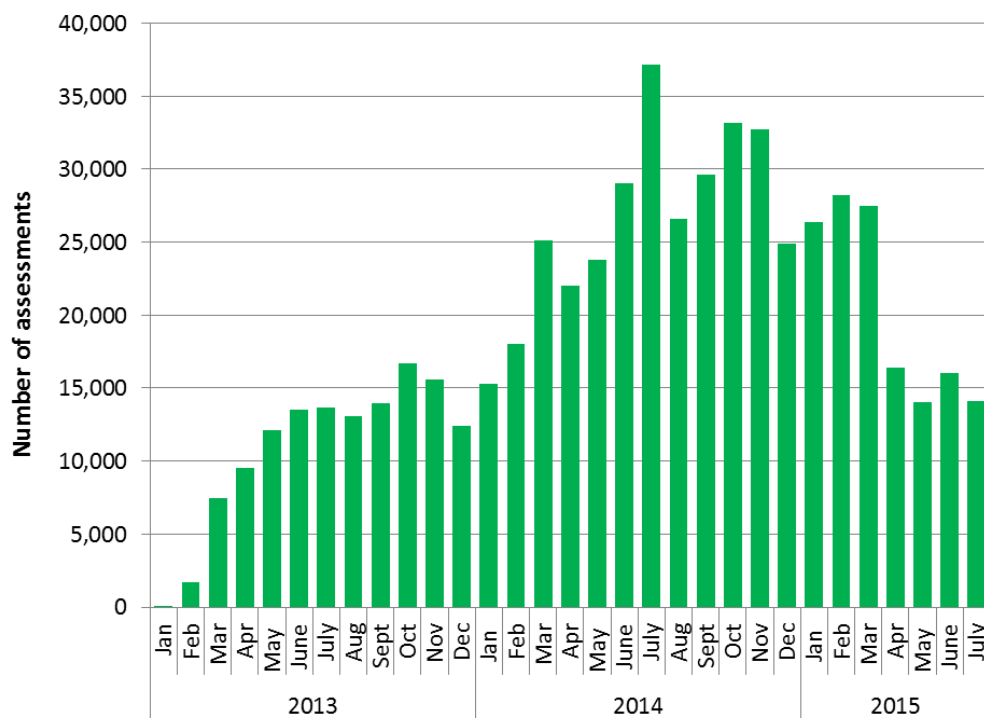
A provisional 1,566,000 measures were installed in around 1,273,000 properties through ECO, Cashback, GD Plans and the Green Deal Home Improvement Fund to the end of June 2015 (the latest month that we have complete data for), with around 36,900 measures installed in around 29,400 properties in June 2015 (Table 1 and Table 1a). The large majority of installed measures (96 per cent) were delivered through the Energy Company Obligation. The most prevalent measures were cavity wall insulation, loft insulation and boilers. Further detailed results of each of these delivery mechanisms are within the main commentary. This excludes measures installed but not captured by administrative data sources, i.e. using alternative finance (see page 12), but includes installed ECO measures eligible under the revised ECO legislation. The household figure also excludes a small number of duplicates (i.e. households with measures installed through more than one delivery mechanism).

### Green Deal Assessments, by month (Table 2, Chart 1)

The first step in the GD process involves a GD Assessor coming to the home, talking to the owner/occupier about their energy use and seeing if they can benefit from making energy efficiency improvements to their property. This leads to a Green Deal Advice Report (GDAR) being produced for the householder and lodged on a national register. The customer is then able to view the energy efficiency measures which have been recommended and understand the potential costs and savings. For more information on the [GD Assessment process see here](#).

At the end of July 2015 there were 590,033 GD Assessments lodged in total ([Chart 1](#)). The 14,097 GD Assessments in July was 12 per cent lower than the number in June 2015 (16,071) and 62 per cent lower than the number in July 2014. The low levels of GD Assessments reported in the last four months are likely to be as a result of lower levels of ECO measures installed. April 2015 was the start of ECO 2 period, and delivery at the start of the new reporting period has been relatively lower. This is likely due to obligated companies not yet having certainty of their remaining ECO 2 targets until Ofgem have completed their compliance checks of ECO 1 measures. Carbon Saving Target (CERO) and Carbon Saving Communities (CSCO) ECO measures are often accompanied with a GD Assessment.

Chart 1 - Number of Green Deal Assessments lodged, by month



**Green Deal Plans in unique properties, cumulative totals by month (Table 3, Table 3a, Table 3b, Chart 2)**

Following an Assessment, for householders who chose to install any of the recommended measures, there are a number of routes to pay for the improvements. Some customers may have chosen GD finance to pay for part or all of their planned improvements, whilst others may have chosen to pay for measures out of savings or other sources of finance, and some may be part funded through ECO.

On 23 July 2015 DECC [announced](#) that there will be no further public funding to the Green Deal Finance Company (GDFC) and that there will be no future funding releases of the Green Deal Home Improvement Fund. This decision has no impact on existing Green Deal Finance Plans in the system or existing Green Deal Home Improvement Fund applications and vouchers. Therefore Plans currently in the system will continue to progress. The announcement was concerned with the financing of GDFC only – the wider market framework remains in place, and should a new finance provider come forward to enter the market, then consumers will be able to choose GD finance Plans as a route.

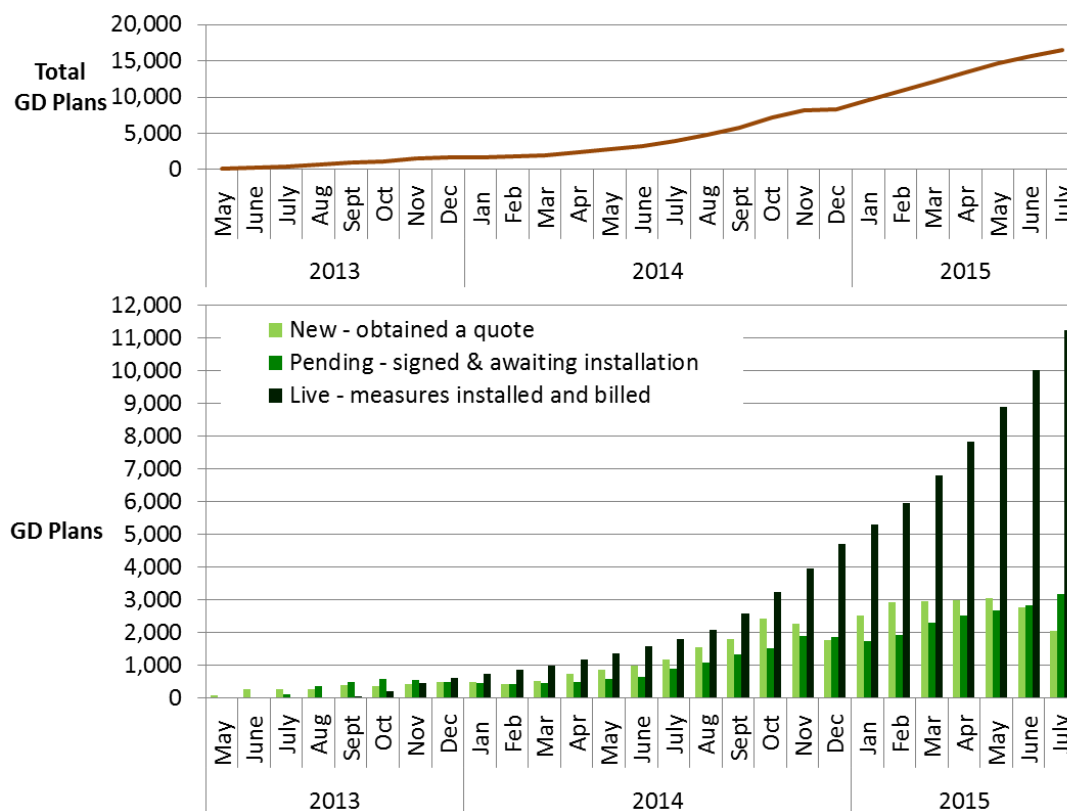
For those who chose GD finance as a route, there were three stages in the life cycle of a GD Plan. The **first stage** (a ‘new’ Plan) is after a customer obtained a quote and confirmed they wish to proceed, the **second stage** (a ‘pending’ Plan) is when a Plan had been signed by the customer and progress was being made to install measures, whilst the **final stage** (a ‘live’ Plan) is when measures have been installed and the energy supplier has all the information required to bill GD charges. For more detail on these stages, please see [Annex B](#).

In total, there were 16,456 GD Plans in the system in unique properties at the end of July 2015, up from 15,596 at the end of June 2015. The growth in the number of GD Plans in the system has been fairly steady in recent months. Of these 16,456 Plans, 2,049 were ‘new’ (quote accepted), another 3,192 were ‘pending’ (Plan signed) and 11,215 were ‘live’ (all measures installed), 68 per cent of all Plans. As ‘new’ and ‘pending’ GD Plans lead to installation of

measures, they will be replaced as 'live' GD Plans in future monthly releases. The three reporting stages are presented in Table 3 and Chart 2.

The total number of measures installed using GD finance was 17,518 up to the end of July 2015 (see Table 3a). Boilers accounted for 31 per cent of measures installed, followed by photovoltaics (30 per cent), and solid wall insulation (14 per cent) (see Table 3b).

Chart 2 - Number of Green Deal Plans in unique properties, cumulative totals at end of each month, and by stages



### Green Deal Home Improvement Fund where payments have been made, by month of installation (Table 5, Table 5a, Chart 3, Chart 4)

The Green Deal Home Improvement Fund (GDHIF) is an incentive scheme open to all householders in England and Wales wanting to improve the energy efficiency of their homes. The scheme allows householders to choose one or both of two offers available and they are eligible to claim money back. GDHIF release 1 opened in June 2014 and closed to new applicants on 24 July 2014<sup>1</sup>. GDHIF release 2 commenced on 10 December 2014 (and closed to new Solid Wall Insulation applicants on 11 December 2014) with payments under GDHIF release 2 starting from January 2015. GDHIF release 3 commenced on 16 March 2015 (and closed to new Solid Wall Insulation applicants on 26 March 2015). The [announcement](#) on 23 July 2015 stated that applications for the “two-measure” offer under GDHIF release 3 will close on 30 September 2015 or when remaining funds are fully allocated.

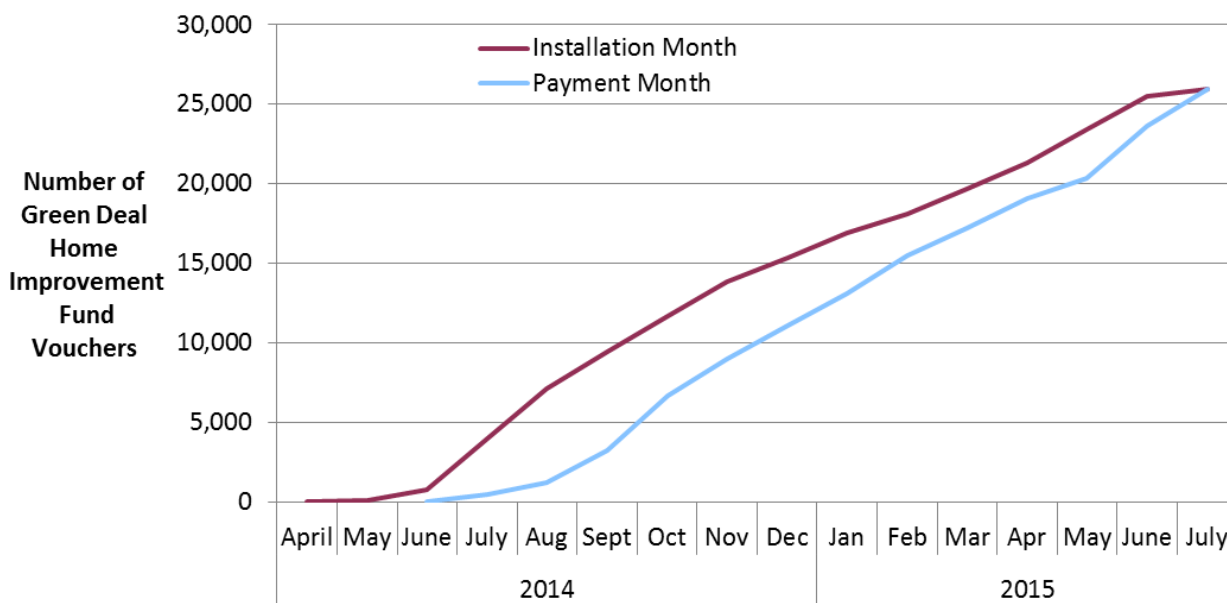
<sup>1</sup> Information on the number of Green Deal Home Improvement Fund (GDHIF) release 1 applications, vouchers issued and maximum value of vouchers issued was published on a weekly basis from 17 June 2014 until the scheme closed on 24 July 2014. Also included on a weekly basis from 17 December 2014 until 7 January 2015 were GDHIF application statistics on GDHIF release 2 and from 24 March 2015 until 26 March 2015 on GDHIF release 3, available here: <https://www.gov.uk/government/statistics/energy-savings-advice-service-esas-calls-and-green-deal-webpage-views>



By the end of July 2015, there were 38,484 active applications (releases 1, 2 and 3), with a total budget committed of around £168m, of which around £46m were still active applications yet to be redeemed. Just over half of GDHIF applications were accompanied with a Green Deal Advice Report, with the remainder accompanied with just an Energy Performance Certificate.

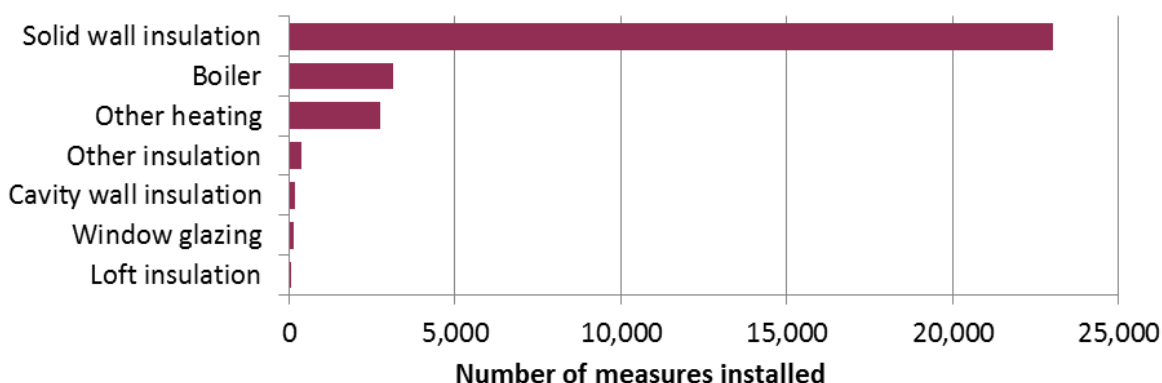
By the end of July 2015, 38,211 vouchers had been issued and had not expired (releases 1, 2 and 3) from the active applications. Of these, 25,908 vouchers had been paid (following installation of 29,669 measures), with a value of £122.8 million. This is around 73 per cent of the £168 million total budget committed under releases 1, 2 and 3 at the end of July 2015. Around £8.5 million payments were made in July from 2,317 vouchers.

Chart 3 – Cumulative number of Green Deal Home Improvement Fund vouchers where payments were made, by month of installation and by month of payment, at end of each month



Solid wall insulation was the main measure where GDHIF payments have been made (78 per cent of measures installed) followed by 'Boiler' of which all were gas boiler installations (11 per cent) and 'Other heating' of which the vast majority were flue gas heat recovery device installations (9 per cent). Of the 25,908 payments made, 12,693 included the Green Deal Advice Report (GDAR) refund (of up to £100 each), and 1,493 included the Home Buyer Bonus (of up to £500 each) (see [Table 5a](#)).

Chart 4 – Number of measures installed where GDHIF payments have been made, by the end of July 2015



## ECO measures installed by obligation, up to the end of June 2015 (Table 6, Table 6a, Chart 5, Chart 6)

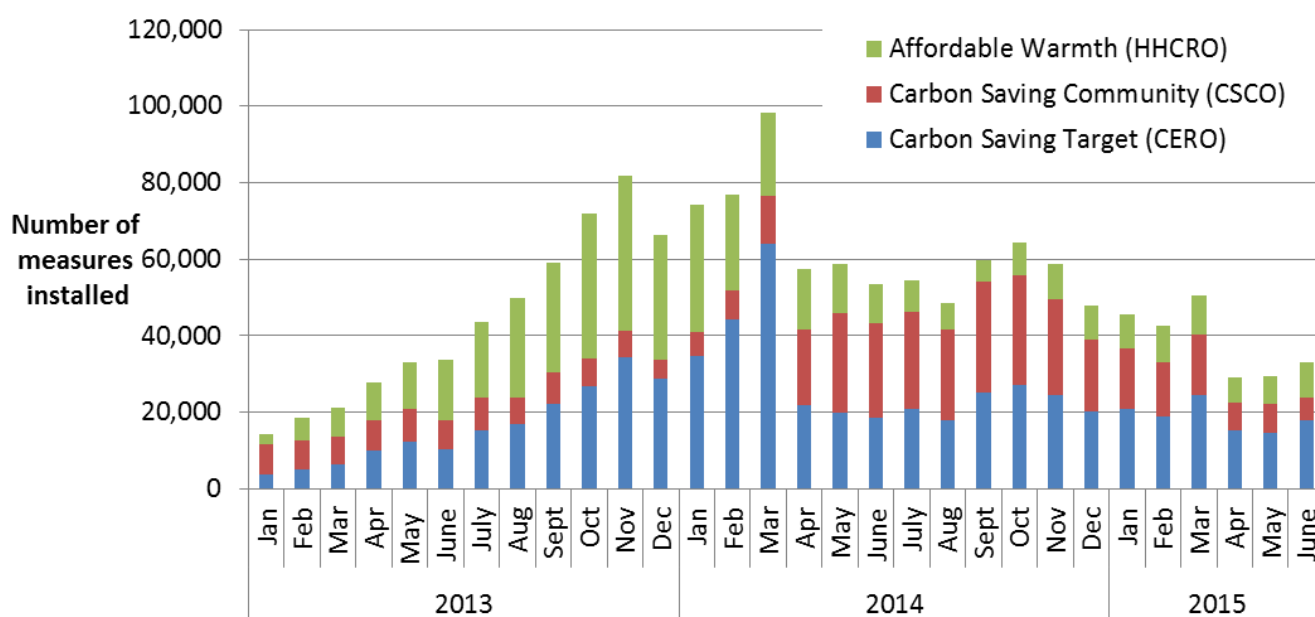
The [Energy Company Obligation](#) (ECO) was introduced in January 2013 to reduce energy consumption and support people at greater risk of living in fuel poverty. Information on measures installed under ECO is at a lag of a month compared to other figures presented in this release due to the time taken for information to be reported and verified. Hence, data on measures installed under ECO is presented until the end of June 2015.

All measures installed under ECO are provisional until the end of the obligation period as checks are undertaken. Checks will be completed by Ofgem for ECO 1 measures by late 2015. Users should note that, in order to produce the timeliest data possible, estimates in this report include a month of data that has yet to go through initial Ofgem validation checks (i.e. they are as reported by energy suppliers to Ofgem). Revisions to data are routinely included in releases and will be explained if they are large. This release uses revised data (for measures since the start of ECO) which have been through further Ofgem processing as well as reflecting any changes (such as switching of obligation) that Energy Companies have notified Ofgem of.

Measures eligible under the revised ECO regulations (passed by Parliament on 5 December 2014) have been captured through the formal Ofgem reporting process. These have been included in the headline statistics, tables, and in the breakdowns below, if they were formally notified as ECO measures, in the month in which the measures were installed. This release includes the all measures installed under the ECO 1 period (January 2013 to March 2015) as well as the first three months of measures installed under ECO 2 period (April 2015 to March 2017).

Table 6 shows the provisional number of measures installed under ECO and Chart 5 shows the number of measures installed by [ECO obligation](#) and by installation month<sup>2</sup>.

Chart 5 - Provisional number of ECO measures installed, by obligation, in each month



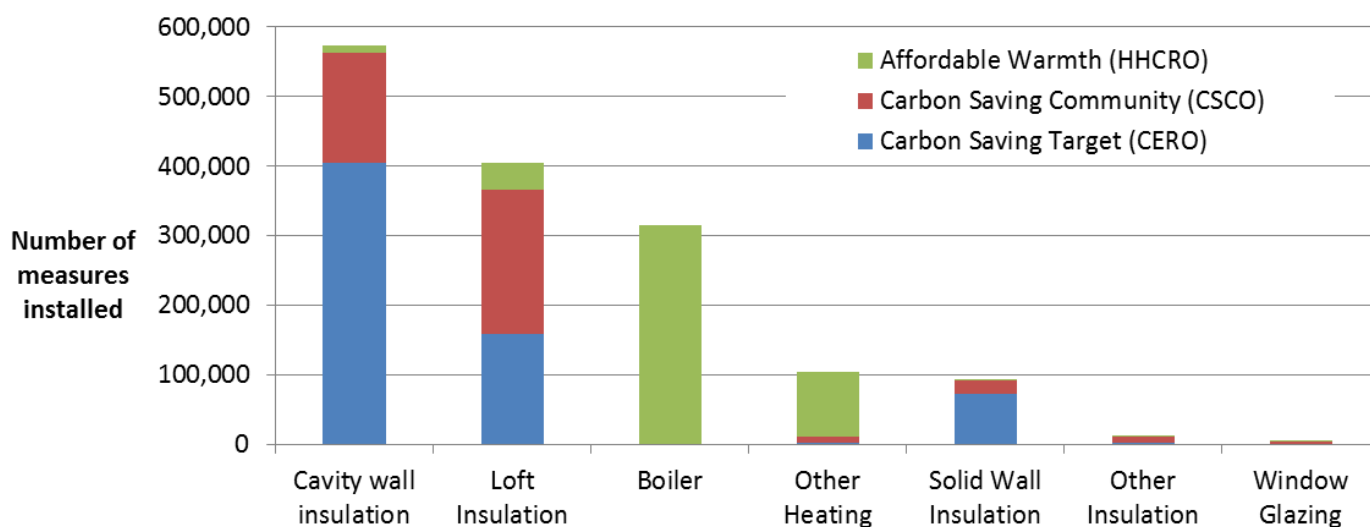
<sup>2</sup> ECO measures installed in earlier months can be notified at a later date under some circumstances. Some notified measures can be reallocated to different ECO obligations and so are subject to change.

Overall, 1,504,898 measures installed under ECO up to the end of June 2015, with 33,091 installed in June, 12 per cent higher than the 29,603 installed in May 2015. The number of measures installed peaked to date in March 2014 (98,411), in part, due to the incentive for energy companies to deliver Carbon Saving Target (CERO) measures by the end of March 2014 in order to benefit from the proposed levelisation which would provide uplift to CERO carbon scoring. Consequently the number of measures installed since March 2014 were lower, particularly now as ECO 1 period has ended, and there will not be certainty of their remaining ECO 2 targets until Ofgem complete their compliance checks of ECO 1 measures.

The split by obligation shows 43 per cent of measures installed under ECO were delivered through the Carbon Saving Target (CERO), 27 per cent were through Carbon Saving Communities (CSCO) and 30 per cent were through Affordable Warmth (HHCRO). Of all measures, four per cent were CSCO 'Rural' sub-obligation measures.

Table 6a and Chart 6 show the provisional number of measures installed under ECO, by measure type and [ECO obligation](#). This shows that the majority of the 1,504,898 measures installed under ECO were for cavity wall insulation (38 per cent), loft insulation (27 per cent) and boiler upgrades (21 per cent). Overall, 1,232,068 properties benefitted from one or more ECO measures being installed up to the end of June 2015 (Table 6a).

Chart 6 - Provisional number of measures installed under ECO, by measure type<sup>3</sup>, by obligation, up to end June 2015



Nearly half (44 per cent) of the 573,859 cavity wall insulation measures installed were delivered to Hard to Treat cavity wall properties<sup>4</sup>.

Over half (57 per cent) of the 404,462 loft insulation measures installed under ECO up to the end of June 2015 were top ups<sup>5</sup>.

Of the 91,360 solid wall insulation measures installed, the large majority (94 per cent) were External Wall Insulation.

<sup>3</sup> Boilers are only eligible under HHCRO. A full list of measure type eligibility by obligation is published here: <https://www.ofgem.gov.uk/ofgem-publications/83100/copyofcomeasurestable-mar2014url.pdf>

<sup>4</sup> Hard to Treat cavity wall properties are also sometimes known as 'hard-to-fill'. This means that they cannot be insulated using the same methods and/or products as a standard cavity wall.

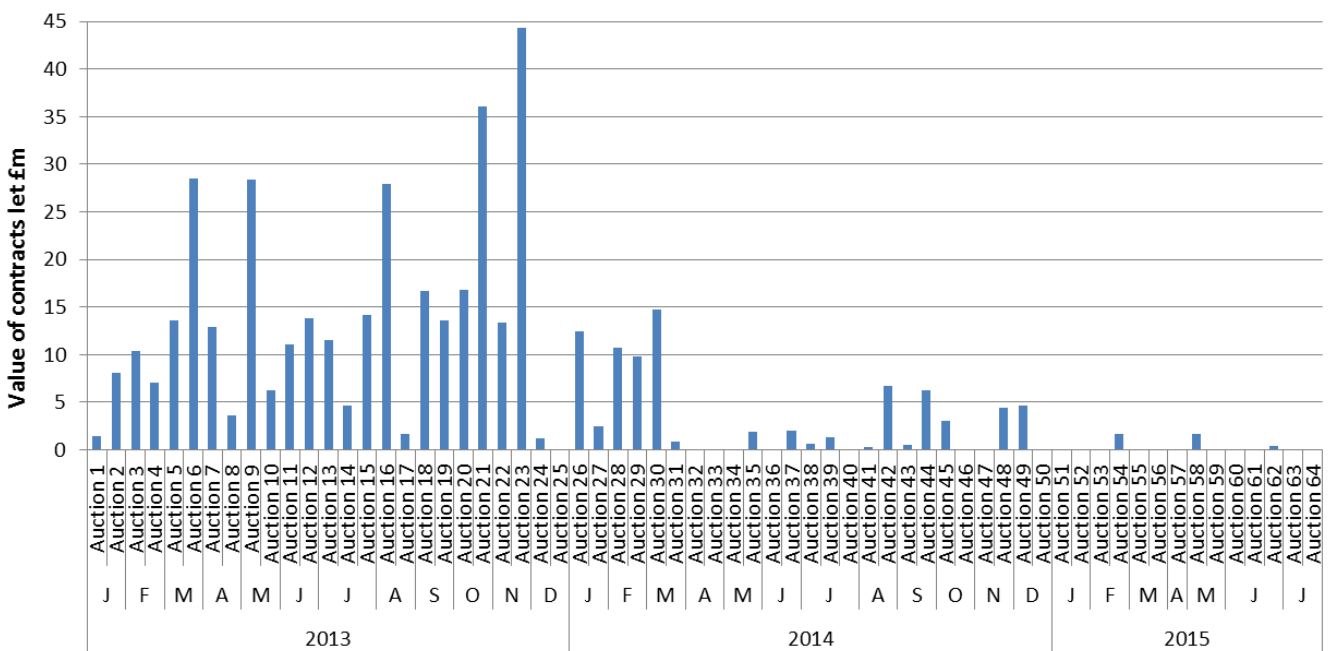
<sup>5</sup> Where there was at least 60mm of existing loft insulation.

## ECO brokerage, as at the end of July 2015 (Table 7, Chart 7)

The [ECO Brokerage](#) system operates as a fortnightly anonymous auction where providers can sell 'lots' of future measures of ECO Carbon Saving Target, ECO Carbon Saving Communities and ECO Affordable Warmth, to energy companies in return for ECO subsidy. Chart 7 shows that up to the end of July 2015 there have been 64 auctions, with a total value of contracts let worth £433.8 million. To date, over a quarter of auctions saw no contracts let.

The low levels of brokerage activity since March 2014 are likely to have been affected by a number of factors, including uncertainty around the period following the announced reduction in the obligation before new legislation came into force in December. Trading may have also been affected as a result of reaching the end to the first ECO obligation period, because contracts under brokerage are for future delivery (and there will not be certainty of ECO 2 targets until Ofgem complete their compliance checks of ECO 1 measures).

Chart 7 – Value of ECO brokerage contracts let, by auction



For more detail on the results of each auction, please see [ECO Brokerage](#).

### Measures not captured by administrative data sources

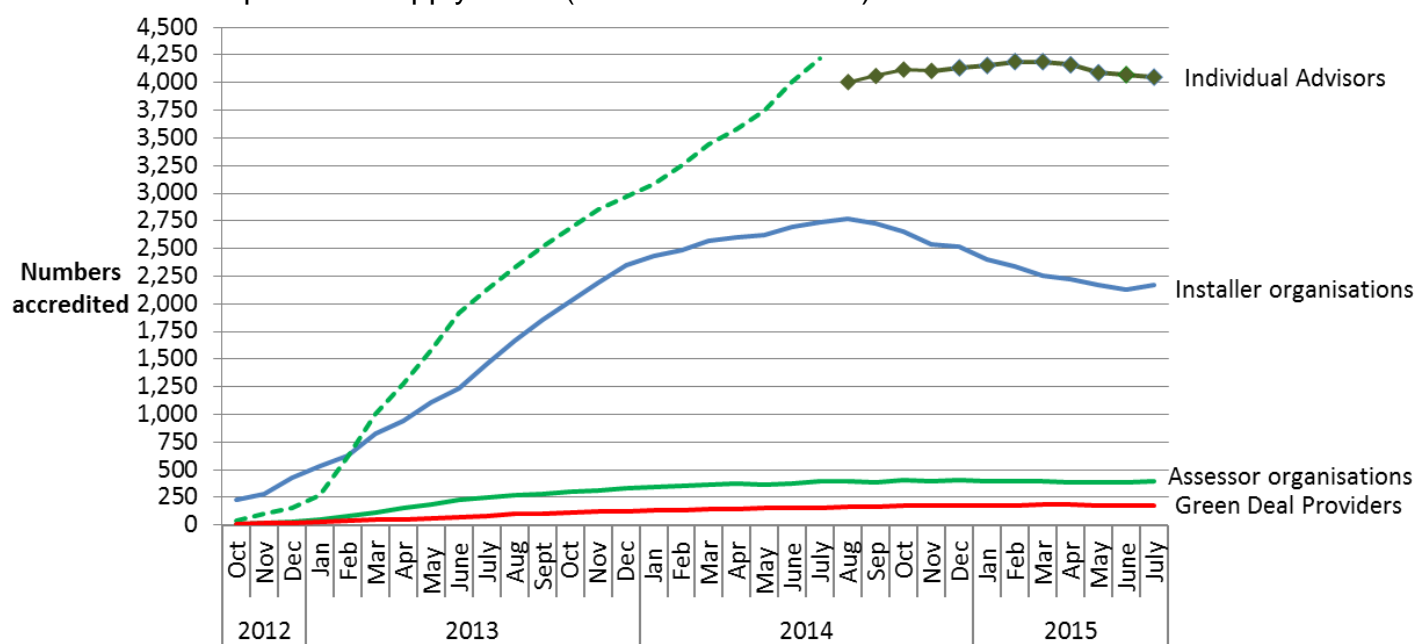
The figures in these tables do not include estimates of measures installed following a GD Assessment where the measure was not captured by administrative data sources (i.e. measures installed using alternative finance). Alternative sources of finance may include savings, payment from a landlord, housing association or Local Authority or other type of loan or credit, but would not have received funding from any of our reported routes. Additional work has been undertaken on this which is reported in the [quarterly statistical release](#).

### Supply chain, as at the end of July 2015 (Table 8, Chart 8)

The supply chain to support the GD has been developing since October 2012. This includes individual Advisors (who carry out and produce Green Deal Advice Reports) and Assessor organisations (who employ authorised GD Advisors), GD Providers (who quote for and arrange GD Plans with householders and arrange for the measures to be installed), and Installer

organisations<sup>6</sup> (who install energy efficiency improvements under the GD finance mechanism). Chart 8 shows the number of organisations and individuals who have been accredited as of the end of each month.

Chart 8 – Development of supply chain (cumulative numbers) at end of each month



The numbers of accredited GD Assessor organisations has remained steady in recent months but the number of individual Advisors completing their training and becoming accredited has decreased slightly. At the end of July 2015 the 394 Assessor organisations<sup>7</sup>, employed a total of 4,051 Advisors. The measurement of the number of individual Advisors<sup>8</sup> changed in August 2014 following improved data quality checks by the GD ORB<sup>9</sup>. The number of GD Providers remained at 179 at the end of July 2015.

There were 2,174 Green Deal accredited installer organisations at the end of July 2015; this was a two per cent increase since June 2015, but a 22 per cent decrease since the peak of 2,774 accredited installers reported at the end of August 2014. This decrease was due to the decision by some installer organisations to not renew their membership which was due for annual renewal, or due to installer organisations choosing to voluntarily exit, or withdrawal by certification body for non-compliance, or due to suspension/ceasing to trade. These organisations will provide a wide range of different measures and in different geographical locations (see [quarterly statistical release](#) for more details).

The Green Deal Oversight and Regulation Body (ORB) produces publically available information on the supply chain, and the latest figures are available by using the search tool on the [ORB website](#). There is also information available on [contacts in local areas](#).

<sup>6</sup> Unlike Advisors in Assessor organisations, individual Installers within an installer organisation do not need to register.

<sup>7</sup> The number of Assessor organisations can decrease due to an organisation's authorisation being suspended and / or withdrawn, or because they have voluntarily withdrawn (e.g. by not renewing their certification).

<sup>8</sup> The number of Advisors is an approximation as there is no single point of entry to the Market for Assessors, Installers or Advisors to provide a unique participant ID.

<sup>9</sup> An improved automated deduplication process, implemented in August 2014, is more effective at identifying potential duplicate Advisor entries and has therefore reduced the total number of unique individual Advisors. The new series of individual Advisors is illustrated in Chart 8 by the dark green line with "♦" markers and is not directly comparable with the original series (dashed line).

# Annex A – Tables

Please note, percentages may not add up to totals due to rounding.

**Table 1: Provisional number of measures installed through ECO, Cashback, using Green Deal finance or Green Deal Home Improvement Fund, by month of installation**

Installation Month <sup>1</sup>	Delivery mechanism				Total number of measures installed <sup>5</sup>
	ECO <sup>2</sup>	Cashback <sup>3</sup>	Green Deal Finance Plans	Green Deal Home Improvement Fund <sup>4</sup>	
January 2013 <sup>6</sup>	14,433	0	0	0	14,433
February 2013	18,606	96	0	0	18,702
March 2013	21,265	136	0	0	21,401
April 2013	27,846	110	0	0	27,956
May 2013	33,096	145	0	0	33,241
June 2013	33,809	3,337	5	0	37,151
July 2013	43,516	1,266	7	0	44,789
August 2013	49,773	1,158	133	0	51,064
September 2013	58,939	1,012	170	0	60,121
October 2013	72,050	844	526	0	73,420
November 2013	81,713	787	471	0	82,971
December 2013	66,282	472	433	0	67,187
January 2014	74,298	498	275	0	75,071
February 2014	76,750	677	310	0	77,737
March 2014	98,411	1,069	265	0	99,745
April 2014	57,432	945	385	22	58,784
May 2014	58,908	973	481	74	60,436
June 2014	53,479	1,934	391	674	56,478
July 2014	54,356	157	561	4,424	59,498
August 2014	48,594	60	625	4,140	53,419
September 2014	59,833	20	1,053	2,667	63,573
October 2014	64,387	0	1,152	2,450	67,989
November 2014	58,660	0	1,120	2,290	62,070
December 2014	47,755	0	906	1,574	50,235
January 2015	45,708	0	886	1,767	48,361
February 2015	42,513	0	922	1,294	44,729
March 2015	50,569	0	1,180	1,676	53,425
April 2015	29,223	0	1,178	1,691	32,092
May 2015	29,603	0	1,314	2,180	33,097
June 2015	33,091	0	1,568	2,265	36,924
<b>Total to date</b>	<b>1,504,898</b>	<b>15,696</b>	<b>16,317</b>	<b>29,188</b>	<b>1,566,099</b>

<sup>1</sup> Measures installed in earlier installation months can be notified at a later date under some circumstances.

<sup>2</sup> Revised ECO regulations were passed by Parliament on 5 December 2014. Measures eligible under the revised regulations have been included in the table.

<sup>3</sup> Cashback figures do not include any measures from the Cashback Exception process.

<sup>4</sup> The Green Deal Home Improvement Fund was only available from June 2014.

<sup>5</sup> Some measures may have been installed through more than one delivery mechanism and there is therefore a small level of double counting. This has not been estimated in the table.

<sup>6</sup> Includes some measures installed between October and December 2012.

**Table 1a: Provisional number of individual households that have had measures installed through ECO, Cashback, using Green Deal finance or Green Deal Home Improvement Fund, by month of installation**

Installation Month <sup>1</sup>	Delivery mechanism				Total number of individual households
	ECO <sup>2</sup>	Cashback <sup>3</sup>	Green Deal Finance Plans	Green Deal Home Improvement Fund <sup>4</sup>	
January 2013 <sup>5</sup>	12,836	0	0	0	12,836
February 2013	16,580	95	0	0	16,675
March 2013	18,841	133	0	0	18,974
April 2013	24,637	109	0	0	24,746
May 2013	29,527	143	0	0	29,670
June 2013	30,184	3,302	0	0	33,486
July 2013	37,923	1,172	1	0	39,096
August 2013	41,074	1,099	11	0	42,184
September 2013	48,448	954	45	0	49,447
October 2013	57,935	789	162	0	58,886
November 2013	65,496	725	239	0	66,460
December 2013	52,737	444	168	0	53,349
January 2014	59,405	465	120	0	59,990
February 2014	61,252	604	137	0	61,993
March 2014	80,016	973	112	0	81,101
April 2014	45,433	826	183	20	46,462
May 2014	47,197	894	194	73	48,358
June 2014	42,734	1,800	215	642	45,391
July 2014	44,797	150	228	3,201	48,376
August 2014	40,103	51	277	3,133	43,564
September 2014	49,737	15	489	2,365	52,606
October 2014	52,728	0	658	2,254	55,640
November 2014	48,129	0	722	2,153	51,004
December 2014	38,568	0	760	1,455	40,783
January 2015	36,648	0	585	1,586	38,819
February 2015	34,083	0	658	1,200	35,941
March 2015	41,337	0	845	1,567	43,749
April 2015	23,672	0	1,008	1,615	26,295
May 2015	23,818	0	1,070	2,069	26,957
June 2015	26,193	0	1,112	2,086	29,391
Households with measures installed through more than one delivery mechanism <sup>6</sup>					-9,300
<b>Total to date</b>	<b>1,232,068</b>	<b>14,743</b>	<b>9,999</b>	<b>25,419</b>	<b>1,272,929</b>

<sup>1</sup> Measures installed in earlier installation months can be notified at a later date under some circumstances.

<sup>2</sup> Where a household has measures installed in two or more months, the earliest installation month is recorded. Revised ECO regulations were passed by Parliament on 5 December 2014. Measures eligible under the revised regulations are included in the table.

<sup>3</sup> Excludes any households that have had measures installed solely through the Cashback Exception process.

<sup>4</sup> Where a household has measures installed in two or more months, the earliest installation month is recorded. This is lower than the number of vouchers issued as it is possible for there to be more than one GDHIF voucher paid per household.

<sup>5</sup> Includes some measures installed between October and December 2012.

<sup>6</sup> The rounded estimate of households with measures installed through more than one delivery mechanism is based on matched records for 98% of cases.



**Table 2: Number of Green Deal Assessments<sup>1</sup> and cumulative total, by month**

Month	Total in Month	Cumulative Total
	Green Deal Assessments	Green Deal Assessments
January 2013	74	74
February 2013	1,729	1,803
March 2013	7,491	9,294
April 2013	9,522	18,816
May 2013	12,146	30,962
June 2013	13,517	44,479
July 2013	13,645	58,124
August 2013	13,087	71,211
September 2013	13,965	85,176
October 2013	16,672	101,848
November 2013	15,595	117,443
December 2013	12,385	129,828
January 2014	15,267	145,095
February 2014	17,998	163,093
March 2014	25,138	188,231
April 2014	22,012	210,243
May 2014	23,811	234,054
June 2014	29,018	263,072
July 2014	37,192	300,264
August 2014	26,625	326,889
September 2014	29,629	356,518
October 2014	33,191	389,709
November 2014	32,734	422,443
December 2014	24,874	447,317
January 2015	26,357	473,674
February 2015	28,238	501,912
March 2015	27,453	529,365
April 2015	16,439	545,804
May 2015	14,061	559,865
June 2015	16,071	575,936
July 2015	14,097	590,033

<sup>1</sup> As measured by the number of Green Deal Advice Reports lodged on the central register against unique property.



**Table 3: Number of Green Deal Plans<sup>1,2,3,4</sup> in unique properties, cumulative total by month**

Month	'New' <sup>1</sup> Green Deal Plans	'Pending' <sup>2</sup> Green Deal Plans	'Live' <sup>3</sup> Green Deal Plans	'Total' <sup>5</sup> Green Deal Plans
May 2013	98	2	0	100
June 2013	270	36	0	306
July 2013	286	132	1	419
August 2013	293	372	12	677
September 2013	392	505	57	954
October 2013	360	594	219	1,173
November 2013	448	572	458	1,478
December 2013	493	493	626	1,612
January 2014	494	481	746	1,721
February 2014	445	426	883	1,754
March 2014	532	473	995	2,000
April 2014	756	505	1,178	2,439
May 2014	863	593	1,372	2,828
June 2014	986	661	1,587	3,234
July 2014	1,192	891	1,815	3,898
August 2014	1,547	1,098	2,092	4,737
September 2014	1,808	1,347	2,581	5,736
October 2014	2,434	1,534	3,239	7,207
November 2014	2,285	1,887	3,961	8,133
December 2014	1,763	1,864	4,721	8,348
January 2015	2,525	1,752	5,306	9,583
February 2015	2,943	1,939	5,964	10,846
March 2015	2,970	2,297	6,809	12,076
April 2015	3,001	2,537	7,817	13,355
May 2015	3,045	2,683	8,887	14,615
June 2015	2,759	2,838	9,999	15,596
July 2015	2,049	3,192	11,215	16,456

<sup>1</sup> A 'new' Green Deal Plan is after a customer has obtained a quote from a Green Deal Provider and confirmed they wish to proceed. The Green Deal Provider has then successfully requested a Green Deal Plan record prior to signature by the customer.

<sup>2</sup> A 'pending' Green Deal is when a Green Deal Plan has been signed by the customer, progress is being made to install Green Deal Plan measures (measures are installed during the 'pending' stage) and the Plan is being finalised so that charging can start.

<sup>3</sup> A 'live' Green Deal Plan is after all the measures have been installed in the property, the information required to disclose the plan to future bill payers has been attached to the Plan and the energy supplier has all the information required to bill Green Deal charges. 32 properties have two 'live' Green Deal Plans, so there are 11,247 'live' Green Deal Plans at the end of July 2015.

<sup>4</sup> There are an additional 250 'completed' Green Deal Plans at the end of July 2015. These are when Plans have been paid off in full after all the measures have been installed in the property, and therefore the Plan is no longer active on the system.

<sup>5</sup> Total Green Deal Plans are the total number of Plan identifiers for unique properties on the Central Charge Database at the end of reporting month.

**Table 3a: Number of measures installed using Green Deal finance<sup>1,2</sup>, and cumulative total<sup>3</sup>, by installation month<sup>4</sup>**

Installation Month	Total in Month	Cumulative Total
	Green Deal Measures	Green Deal Measures
June 2013	5	5
July 2013	7	12
August 2013	133	145
September 2013	170	315
October 2013	526	841
November 2013	471	1,312
December 2013	433	1,745
January 2014	275	2,020
February 2014	310	2,330
March 2014	265	2,595
April 2014	385	2,980
May 2014	481	3,461
June 2014	391	3,852
July 2014	561	4,413
August 2014	625	5,038
September 2014	1,053	6,091
October 2014	1,152	7,243
November 2014	1,120	8,363
December 2014	906	9,269
January 2015	886	10,155
February 2015	922	11,077
March 2015	1,180	12,257
April 2015	1,178	13,435
May 2015	1,314	14,749
June 2015	1,568	16,317
July 2015	1,201	17,518

<sup>1</sup> As measured by the number of measures installed using Green Deal finance where a Green Deal Plan has gone 'live' or 'completed' following being 'live'.

<sup>2</sup> There may be a number of measures which have also been reported under ECO or Cashback.

<sup>3</sup> The number of measures installed using Green Deal finance in earlier installation months are subject to revision as Green Deal Plans may become 'live' after the month of installation.

<sup>4</sup> The number of measures installed using Green Deal finance in any month other than the latest month are not directly comparable with the number of 'live' Green Deal Plans for each of those respective months. This is because some measures may have been installed in a month previous to when the corresponding Green Deal Plan went 'live'.

**Table 3b: Number of measures by measure type\* installed using Green Deal finance<sup>1,2</sup>, up to end of July 2015**

Measure Types	Total number of Measures installed using Green Deal finance <sup>3</sup>	Percentage of Measures
<b>Boiler</b>	5,486	31
<b>Cavity Wall Insulation</b>	373	2
<b>Lighting</b>	239	1
<b>Loft Insulation</b>	1,090	6
<b>Micro-generation</b>	5,228	30
<b>Other Heating</b>	1,495	9
<b>Other Insulation</b>	1,062	6
<b>Solid Wall Insulation</b>	2,505	14
<b>Window Glazing</b>	40	0
<b>Total</b>	<b>17,518</b>	<b>100</b>

<sup>1</sup> As measured by the number of measures installed using Green Deal finance where a Green Deal Plan has gone 'live', or 'completed' following being 'live'.

<sup>2</sup> There may be a small number of measures which have also been reported under ECO or Cashback.

<sup>3</sup> The number of measures installed using Green Deal finance are subject to revision as Green Deal Plans may become 'live' after the month of installation.

\*For the full list of measure types, please see Table 3b in Excel [here](#).

**Table 4: Number and value of Cashback vouchers paid, and cumulative total, by installation month, England and Wales only**

Installation Month	Payments made <sup>1</sup>	
	Number	Value (£)
February 2013	95	25,750
March 2013	133	35,990
April 2013	109	29,510
May 2013	143	40,192
June 2013	3,302	896,305
July 2013	1,172	330,430
August 2013	1,099	309,646
September 2013	954	265,769
October 2013	789	228,878
November 2013	725	233,746
December 2013	444	141,696
January 2014	465	150,763
February 2014	604	255,133
March 2014	973	477,332
April 2014	826	503,921
May 2014	894	920,321
June 2014	1,800	2,810,844
July 2014	150	65,370
August 2014	51	61,700
September 2014	15	15,100
<b>Sub-total</b>	<b>14,743</b>	<b>7,798,394</b>
Cashback Exception process <sup>2</sup>	2,686	6,793,361
Cashback uplift payments <sup>3</sup>		1,716,639
<b>Total to date</b>	<b>17,429</b>	<b>16,308,393</b>

<sup>1</sup> The Cashback scheme closed for applications at the end of June 2014 and all redemptions required measures to be installed before the end of September 2014. The standard payment system stopped making payments at the end of October 2014. Therefore the breakdown of payments made by month is the final summary.

<sup>2</sup> The Cashback Exception process has additionally paid 2,686 vouchers (following 2,686 exception applications), totalling £6.8m for solid wall insulation and warm air heating measures where those recommended measures are not displayed on the EPC. Of the total number of 2,686 exceptions, two were additional vouchers issued that were paid in December 2014 with a total value of £4,350.

<sup>3</sup> Vouchers redeemed on or after 13 December 2013 are eligible for higher rates for Cashback. The values reported in the table for Cashback vouchers paid between 13 December 2013 and 25 March 2014 are for the original Cashback amount.

**Table 4a: Number of measures installed with Cashback<sup>1,2</sup>, at the end of the Cashback Scheme<sup>3</sup>, England and Wales only**

Measure Types	Total number of Cashback measures delivered	Percentage of Measures
<b>Boiler</b>	<b>12,379</b>	<b>79</b>
Gas Boiler	12,308	78
Oil Boiler	71	0
<b>Cavity wall insulation</b>	<b>300</b>	<b>2</b>
<b>Loft Insulation</b>	<b>773</b>	<b>5</b>
Loft Insulation	762	5
Room in Roof Insulation	11	0
<b>Other Heating</b>	<b>12</b>	<b>0</b>
Electric Storage Heaters	1	0
Flue Gas Heat Recovery Devices	0	0
Heating Controls	11	0
Warm Air Units	0	0
Waste Water Heat Recovery Systems	0	0
<b>Other Insulation</b>	<b>60</b>	<b>0</b>
Draught Proofing	12	0
Flat Roof Insulation	23	0
Hot Water Cylinder Insulation	6	0
Passageway Walk-through Doors	9	0
Under Floor Insulation	10	0
<b>Solid Wall Insulation</b>	<b>2,108</b>	<b>13</b>
<b>Window Glazing</b>	<b>64</b>	<b>0</b>
Double Glazing	62	0
Secondary Glazing	2	0
<b>Total number of measures</b>	<b>15,696</b>	<b>100</b>

<sup>1</sup> More than one measure can be installed with Cashback per unique property.

<sup>2</sup> This table does not include any measures from the Cashback Exception process.

<sup>3</sup> The standard payment system stopped making payments at the end of October 2014 and all measures were installed before the end of September 2014. Therefore the number of Cashback measures delivered is the final summary as at the end of October 2014.

**Table 5: Number and value of Green Deal Home Improvement Fund vouchers paid, and cumulative total, by installation month, and by payment month, England and Wales only**

Month <sup>6</sup>	Active applications <sup>1</sup>	Vouchers issued <sup>2</sup>	Payments made <sup>3,4</sup> by installation month <sup>6</sup>		Payments made <sup>3,4</sup> by payment month	
	Number <sup>5</sup>		Number	Value (£)	Number	Value (£)
April 2014 <sup>7</sup>			20	52,808	0	0
May 2014			73	210,373	0	0
June 2014			642	3,450,974	0	0
July 2014			3,205	13,418,588	448	2,269,282
August 2014			3,141	14,334,848	756	3,172,666
September 2014			2,366	13,021,512	2,030	8,113,913
October 2014			2,257	12,905,556	3,452	16,385,712
November 2014			2,156	12,609,171	2,270	12,505,424
December 2014			1,455	8,518,067	2,104	11,860,439
January 2015			1,592	8,383,847	2,045	11,631,739
February 2015			1,209	5,463,779	2,395	13,166,934
March 2015			1,571	7,192,731	1,719	8,726,462
April 2015			1,624	6,206,339	1,839	8,714,302
May 2015			2,079	7,811,778	1,298	5,362,849
June 2015			2,097	7,708,531	3,235	12,322,143
July 2015			421	1,480,146	2,317	8,537,182
<b>Total to date</b>	<b>38,484</b>	<b>38,211</b>	<b>25,908</b>	<b>122,769,048</b>	<b>25,908</b>	<b>122,769,048</b>

<sup>1</sup> GDHIF active applications include any vouchers issued, pending, or vouchers which have been paid, under GDHIF release 1, release 2 and release 3 funding. It excludes any vouchers which have been cancelled, rejected, superseded, expired or claim failed. The 38,484 active applications up to the end of July 2015 equates to a total budget committed of around £168m, meaning there are still applications to the value of £46m which are still active and have not been redeemed by the end of July. GDHIF release 1 commenced on 17th June 2014 and the 17,470 active applications under release 1 at the end of July 2015 had a fund allocation of around £91m. GDHIF release 2 commenced on 10th December 2014 and the 3,960 active applications under release 2 have a fund allocation of around £15m. GDHIF release 3 commenced on 16th March 2015 and 17,054 active applications under release 3 have been included with fund allocation of around £62m.

<sup>2</sup> There may have been several vouchers issued for a single application where a customer has modified key elements of their application, but not all active applications have had a voucher issued. It is also possible to have more than one voucher issued and payment made per household. 38,211 vouchers have been issued and had not expired by end of July 2015, of which 17,470 were GDHIF release 1, 3,960 were release 2 and 16,781 GDHIF release 3 vouchers.

<sup>3</sup> Of the 25,908 payments made, 1,493 of these received the Home Buyer Bonus (of up to £500 each).

<sup>4</sup> Of the 25,908 payments made, 12,693 of these received the Green Deal Advice Report refund (of up to £100 each).

<sup>5</sup> Comparable applications and vouchers data are not available by month.

<sup>6</sup> The numbers of GDHIF payments made in early months have been revised. This is due to GDHIF redemptions being paid in later months. Where a household has measures installed in two or more months, the earliest installation month is recorded. This includes 17,410 payments under GDHIF release 1 to the value of £90.9m, 3,627 payments under GDHIF release 2 to the value of £14.0m and 4,871 payments under GDHIF release 3 to the value of £17.8m.

<sup>7</sup> The April 2014 figure includes a small number of payments where measures were installed that 'transferred' from the Cashback scheme.

**Table 5a: Number of measures installed through Green Deal Home Improvement Fund<sup>1</sup> up to end of July 2015, England and Wales only**

Measure Types	Total number of GDHIF measures delivered	Percentage of Measures
<b>Boiler</b>	<b>3,148</b>	<b>11</b>
Gas Boiler	3,148	11
<b>Cavity wall insulation</b>	<b>173</b>	<b>1</b>
<b>Loft Insulation</b>	<b>64</b>	<b>0</b>
Room in Roof Insulation	64	0
<b>Other Heating</b>	<b>2,765</b>	<b>9</b>
Electric Storage Heaters	2	0
Flue Gas Heat Recovery Devices	2,552	9
Warm Air Units	0	0
Waste Water Heat Recovery Systems	211	1
<b>Other Insulation</b>	<b>363</b>	<b>1</b>
Flat Roof Insulation	48	0
Passageway Walk-through Doors	190	1
Under Floor Insulation	125	0
<b>Solid Wall Insulation</b>	<b>23,005</b>	<b>78</b>
<b>Window Glazing</b>	<b>151</b>	<b>1</b>
Double/Triple Glazing	141	0
Secondary Glazing	10	0
<b>Total number of measures</b>	<b>29,669</b>	<b>100</b>

<sup>1</sup> More than one measure can be installed with Green Deal Home Improvement Fund per unique property.

**Table 6: Provisional number of ECO measures installed<sup>1</sup>, by obligation, by installation month**

Installation Month <sup>2</sup>	Obligation			Affordable Warmth (HHCRO)	Total number of ECO measures installed
	Carbon Saving Target (CERO)	Carbon Savings Community (CSCO)			
		of which 'Rural' sub-obligation			
January 2013 <sup>1</sup>	3,855	7,894	0	2,684	14,433
February 2013	5,161	7,359	0	6,086	18,606
March 2013	6,403	7,374	1	7,488	21,265
April 2013	9,969	7,897	2	9,980	27,846
May 2013	12,227	8,810	5	12,059	33,096
June 2013	10,203	7,651	2	15,955	33,809
July 2013	15,320	8,657	1	19,539	43,516
August 2013	16,826	7,052	0	25,895	49,773
September 2013	22,071	8,271	12	28,597	58,939
October 2013	26,686	7,430	25	37,934	72,050
November 2013	34,500	6,836	32	40,377	81,713
December 2013	28,928	4,819	66	32,535	66,282
January 2014	34,780	6,364	129	33,154	74,298
February 2014	44,323	7,418	369	25,009	76,750
March 2014	64,123	12,564	214	21,724	98,411
April 2014	21,847	19,824	1,332	15,761	57,432
May 2014	20,045	25,847	2,967	13,016	58,908
June 2014	18,623	24,713	4,245	10,143	53,479
July 2014	20,807	25,554	5,506	7,995	54,356
August 2014	17,781	23,953	5,037	6,860	48,594
September 2014	25,084	28,983	5,900	5,766	59,833
October 2014	27,172	28,638	7,003	8,577	64,387
November 2014	24,401	25,017	6,605	9,242	58,660
December 2014	20,358	18,690	4,326	8,707	47,755
January 2015	20,933	15,673	3,881	9,102	45,708
February 2015	19,044	14,173	3,407	9,296	42,513
March 2015	24,483	15,855	4,008	10,231	50,569
April 2015	15,277	7,358	1,600	6,588	29,223
May 2015	14,727	7,429	1,591	7,447	29,603
June 2015	17,902	6,086	902	9,103	33,091
<b>Total to date<sup>3</sup></b>	<b>643,859</b>	<b>404,189</b>	<b>59,168</b>	<b>456,850</b>	<b>1,504,898</b>

<sup>1</sup> Includes some measures installed between October and December 2012.

<sup>2</sup> ECO measures installed in earlier installation months can be notified at a later date under some circumstances. Some notified measures can be reallocated to different ECO obligations and so are subject to change. Measures from earlier installation months can be rejected by Ofgem.

<sup>3</sup> Revised ECO regulations were passed by Parliament on 5 December 2014. Measures eligible under the revised regulations have been captured through the formal Ofgem reporting process, and have been included in the table in the month in which the measures were installed. This release uses revised data (for measures since the start of ECO up to the end of November 2014) which have been through further Ofgem processing as well as reflecting any changes (such as switching of obligation) that Energy Companies have notified Ofgem of. Therefore data have been revised in most months.



**Table 6a: Provisional number of ECO measures installed<sup>1</sup>, by measure type\*, by obligation, up to end June 2015**

Measure Types <sup>2</sup>	Obligation			Affordable Warmth (HHCRO)	Total number of ECO measures delivered	Percentage of ECO Measures
	Carbon Saving Target (CERO)	Carbon Savings Community (CSCO)	of which 'Rural' sub-obligation			
<b>Boiler</b>	N/A	N/A	N/A	315,608	315,608	21.0
<b>Cavity wall insulation</b>	405,350	157,918	25,014	10,591	573,859	38.1
<b>Loft Insulation</b>	159,200	207,649	31,005	37,613	404,462	26.9
<b>Micro-generation</b>	N/A	N/A	N/A	0	0	0
<b>Other Heating</b>	3,011	8,226	164	92,934	104,171	6.9
<b>Other Insulation</b>	2,604	9,327	1,284	94	12,025	0.8
<b>Solid Wall Insulation</b>	72,718	18,633	1,701	9	91,360	6.1
<b>Window Glazing</b>	976	2,436	0	1	3,413	0.2
<b>Total number of measures<sup>3</sup></b>	<b>643,859</b>	<b>404,189</b>	<b>59,168</b>	<b>456,850</b>	<b>1,504,898</b>	<b>100</b>
<b>Total number of unique properties<sup>4,5,6</sup></b>	<b>559,483</b>	<b>356,387</b>	<b>51,908</b>	<b>350,000</b>	<b>1,232,068</b>	

<sup>1</sup> As reported by energy suppliers to Ofgem in their monthly returns. Excludes any measures which have been rejected by Ofgem or withdrawn by obligated energy suppliers. Please see the accompanying [Methodology Note](#) for more details.

<sup>2</sup> Please see Ofgem's guidance for suppliers for more details on eligible measures.

<sup>3</sup> Revised ECO regulations were passed by Parliament on 5 December 2014. Measures eligible under the revised regulations have been captured through the formal Ofgem reporting process, and have been included in the table.

<sup>4</sup> Some ECO measures were installed in properties without recording the full address (e.g. blocks of flats), so there may be slightly more unique properties than recorded here.

<sup>5</sup> The total number of unique properties by obligation does not equal the total number of unique properties overall, as some properties have measures installed under more than one obligation.

<sup>6</sup> The total number of unique properties with ECO measures installed under CSCO and/or HHCRO is 690,727.

\*For the full list of measure types, please see Table 6a in Excel [here](#).

**Table 7: Number of ECO brokerage auctions<sup>1</sup> and total amount traded, by month**

Month	Number of auctions	Total amount traded
January 2013	2	£9.53m
February 2013	2	£17.39m
March 2013	2	£42.05m
April 2013	2	£16.56m
May 2013	2	£34.60m
June 2013	2	£24.98m
July 2013	3	£30.47m
August 2013	2	£29.55m
September 2013	2	£30.38m
October 2013	2	£52.87m
November 2013	2	£57.66m
December 2013	2	£1.20m
January 2014	2	£14.94m
February 2014	2	£20.49m
March 2014	2	£15.61m
April 2014	2	£0.00m
May 2014	2	£1.88m
June 2014	2	£2.03m
July 2014	3	£1.93m
August 2014	2	£7.04m
September 2014	2	£6.76m
October 2014	2	£3.05m
November 2014	2	£4.46m
December 2014	2	£4.60m
January 2015	2	£0.00m
February 2015	2	£1.68m
March 2015	2	£0.00m
April 2015 <sup>2</sup>	1	£0.00m
May 2015	2	£1.70m
June 2015	3	£0.38m
July 2015	2	£0.02m
<b>Total to date</b>	<b>64</b>	<b>£433.78m</b>

<sup>1</sup> ECO brokerage auctions are scheduled to take place on a fortnightly basis.

<sup>2</sup> The platform provider, Crown Commercial Service experienced technical issues that affected the functionality of the ECO Brokerage trading platform. As a result auction 58 that was due to take place on Tuesday 21st April 2015 was postponed.

**Table 8: Number<sup>1</sup> of accredited Assessor organisations, individual Advisors, Green Deal Providers, and Installer organisations, cumulative totals by month**

Month <sup>2</sup>	Assessor organisations	Individual Advisors	Green Deal Providers	Installer organisations
October 2012	13	40	8	231
November 2012	18	100	15	285
December 2012	29	159	20	429
January 2013	48	270	25	531
February 2013	77	618	40	629
March 2013	108	1,003	48	831
April 2013	152	1,274	55	942
May 2013	182	1,582	60	1,108
June 2013	226	1,919	66	1,234
July 2013	248	2,129	79	1,457
August 2013	269	2,332	101	1,662
September 2013	286	2,517	107	1,853
October 2013	302	2,687	112	2,020
November 2013	314	2,855	123	2,190
December 2013 <sup>3</sup>	331	2,972	125	2,353
January 2014	344	3,087	130	2,432
February 2014	352	3,254	133	2,483
March 2014	364	3,445	143	2,575
April 2014	373	3,580	143	2,601
May 2014	369	3,747	151	2,619
June 2014	375	4,006	151	2,697
July 2014	392	4,219	156	2,735
August 2014 <sup>4</sup>	393	4,006	161	2,774
September 2014	391	4,061	162	2,729
October 2014	404	4,119	174	2,649
November 2014	398	4,107	176	2,539
December 2014	403	4,135	176	2,514
January 2015	400	4,156	177	2,397
February 2015	393	4,191	177	2,343
March 2015	394	4,190	184	2,258
April 2015	390	4,162	186	2,220
May 2015	390	4,090	181	2,168
June 2015	387	4,073	179	2,129
July 2015	394	4,051	179	2,174

<sup>1</sup> Numbers include domestic, both domestic and non-domestic and a small number of non-domestic only participants.

<sup>2</sup> Months are approximate as they are based on numbers up to the end of the last full week in the month.

<sup>3</sup> December 2013 reporting period is up to the 23rd December 2013.

<sup>4</sup> The measurement of the number of individual Advisors changed in August 2014 and is not directly comparable with the number of Advisors up to the end of July 2014.

# Annex B – Background

## Green Deal

The [Green Deal](#) (GD) was launched on 28 January 2013 in England and Wales (and on 25 February 2013 in Scotland) with the aim of tackling a number of the key barriers to the take-up of energy efficiency measures.

Customers having GD Assessments undertaken have the choice of how they proceed. They might take the view that their home is sufficiently energy efficient, or that they wanted to finance work through a GD Plan or that they wanted to use alternative funding arrangements (e.g. use of savings).

On 23 July 2015 DECC [announced](#) that there will be no further public funding to the Green Deal Finance Company. This decision has no impact on existing Green Deal Finance Plans in the system so these will continue to progress.

A brief description of how the GD process works is shown below:

**Step 1 – Assessment** – A GD Assessor will come to the home, talk to the owner/occupier about their energy use and see if they can benefit from making energy efficiency improvements to their property.

**Step 2 – Recommendations** – The GD Assessor will recommend improvements that are appropriate for the property and indicate whether they are expected to pay for themselves through reduced energy bills.

**Step 3 – Quotes** – GD Providers will discuss with the owner/occupier whether a GD Plan is right for them and quote for the recommended improvements, including the savings estimates, savings period, first year instalments and payment period for each improvement. A number of quotes can be obtained.

**Step 4 – Signing a Plan** – The customer chooses to proceed with a given provider and package of measures. The owner/occupier needs to obtain the necessary consent to make improvements to the property before they can agree terms with the GD Provider of a GD Plan<sup>10</sup>, at which stage they enter a cooling-off period<sup>11</sup>.

**Step 5 – Installation** – Once a GD Plan has been agreed, the Provider will arrange for the improvements to be made by a GD Installer. Once the installation has been completed a letter is sent to the Bill Payer and, at this stage, the GD Plan goes 'live'.

Repayments will be no more than what a typical household should save in energy costs.

It had only been possible for GD Providers to request Plans once commercial agreements between the Green Deal Finance Company and GD Providers have been agreed. It took GD Providers some time to prepare their businesses to bring offers to the market with GD Plans being created from May 2013 onwards for GD Providers who have finalised their offer to date.

---

<sup>10</sup> The Plan is a contract between the owner/occupier and the Provider – it sets out the work that will be done and the repayments.

<sup>11</sup> For example, in the case of a GD Plan that is regulated by the Consumer Credit Act 1974, the consumer will have 14 days to withdraw from the part of the GD Plan which provides credit.

For those who chose GD finance, there were **three stages** in the life cycle of a GD Plan.

- the **first stage** (a 'new' GD Plan) is after a customer has obtained a quote from a GD Provider and confirmed they wish to proceed. The GD Provider has then successfully requested a GD Plan record prior to signature by the customer. It is possible that more than one GD Plan may be requested for each household.
- the **second stage** (a 'pending' GD Plan) is when a GD Plan has been signed by the customer, progress is being made to install GD Plan measures and the Plan is being finalised so that charging can start.
- the **final stage** (a 'live' GD Plan) is after the measures have been installed in the property, the information required to disclose the Plan to future bill payers has been attached to the Plan and the energy supplier has all the information required to bill GD charges. At this stage the daily charge has been confirmed along with the date from when the charge will be accrued on their electricity bill.

### Energy Company Obligation

The [Energy Company Obligation](#) (ECO) started on 1 January 2013 (although energy companies have been able to count against their targets measures delivered since 1 October 2012) and runs to 31 March 2015 for the ECO 1 period. ECO 2 commenced from April 2015 and is set to run until 31 March 2017. It broadly takes over from two previous schemes (Carbon Emissions Reduction Target - CERT - and Community Energy Saving Programme - CESP) and focuses on providing energy efficiency measures to low income and vulnerable consumers and those living in 'hard-to-treat' properties.

There are three main ECO obligations – The Carbon Saving Target (CERO); Carbon Saving Communities (CSCO) and Affordable Warmth (HHCRO).

Carbon Saving Target – This covers the installation of measures like solid wall and hard-to-treat cavity wall insulation, which ordinarily can't be financed solely through Green Deal Plans.

Carbon Saving Communities Obligation – This provides insulation measures to households in specified areas of low income. It also makes sure that 15 per cent of each supplier's obligation is used to upgrade more hard-to-reach low-income households in rural areas.

Affordable Warmth Obligation – This provides heating and insulation measures to consumers living in private tenure properties who receive particular means-tested benefits. This obligation supports low-income consumers who are vulnerable to the impact of living in cold homes, including the elderly, disabled and families.

### Green Deal Cashback

The Cashback scheme closed at the end of June 2014. There will be no further applications for the Cashback scheme but vouchers were redeemed and paid until 30 September 2014.

The Cashback Scheme rewarded the first GD customers. It was a first-come, first served offer where householders can claim cash back from Government on energy saving improvements like insulation, front doors, windows and boilers with packages worth over £1,000. It was available for households in England and Wales.

For more information on the separate scheme that operates in Scotland please see the relevant [website](#). Statistics on this scheme can be found [here](#).

## Green Deal Home Improvement Fund

On 23 July 2015 DECC [announced](#) that there will be no future funding releases of the Green Deal Home Improvement Fund. This decision has no impact on existing Green Deal Home Improvement Fund applications and vouchers. The latest 'two measures' offer will close to applications on 30 September 2015 or when the remaining £3 million of funding run out – whichever happens sooner.

The Green Deal Home Improvement Fund (GDHIF) is an incentive scheme open to all householders in England and Wales wanting to improve the energy efficiency of their homes. The scheme allowed householders to choose one or both of two offers and they were eligible to claim up to £7,600. Householders could also claim a refund of up to £100 for a Green Deal Advice Report (GDAR). GDHIF release 1 closed to new applicants at 6:30pm on 24 July 2014. GDHIF release 2 commenced on 10 December 2014 and GDHIF release 3 commenced on 16 March 2015. For more information please see the [GDHIF website](#). For more information on the separate scheme that operated in Scotland please see the relevant [website](#). Statistics on this scheme can be found [here](#).

DECC published GDHIF application release 1 data on the gov.uk [website](#) on a weekly basis until the scheme closed, to assist businesses and households. This weekly series reported the number of applications, vouchers issued and maximum value of vouchers issued. Also included on a weekly basis from 17 December 2014 until 7 January 2015 (on the same [website](#)), were GDHIF application statistics on GDHIF release 2. A one-off publication was made on 12 December to show that funding allocated to Solid Wall Insulation applications reached its maximum allocation amount. Also included on a weekly basis from 24th March 2015 (on the same [website](#)), were GDHIF application statistics on GDHIF release 3. A one-off publication was made on 26 March 2015 to show that funding allocated to Solid Wall Insulation applications reached its maximum allocation amount.

This data was provided from the GDHIF administrator and was therefore provisional.

## ECO Brokerage

The [ECO Brokerage](#) system operates as a fortnightly anonymous auction where GD Providers can sell 'lots' of future measures of ECO Carbon Saving Target, ECO Carbon Saving Communities and ECO Affordable Warmth, to energy companies in return for ECO subsidy.

This market-based mechanism has been introduced to support an open and competitive market for the delivery of the ECO. Brokerage allows a range of GD providers to fairly compete on price to attract ECO support and enables energy suppliers to deliver their obligations at the lowest possible cost, thereby reducing the impact on customer energy bills.

Sellers (GD Providers) can make a competitive offer on brokerage by leveraging additional sources of finance, such as part funding measures through GD Finance, partnerships with local authorities, or driving down costs by economies of scale.

## The Supply Chain

To understand more about the organisations and infrastructure underpinning the GD, this report also includes a section summarising the trends in the number of GD Advisors (and Assessor organisations), the number of GD Providers and the number of GD Installer organisations.

# Annex C – Sources and Methodology

The estimates in this and future Statistical Release use administrative data generated as part of the GD and ECO processes.

There are seven main sources of information:

- Landmark – who manage the national lodgement of GD Assessments in England and Wales
- Energy Savings Trust (EST) – who manage the national lodgement of GD Assessments in Scotland
- Green Deal Central Charge Database – which manages the recording and administration of GD Plans
- Ofgem – who administer the Energy Company Obligation and collect information from energy companies on measures installed under ECO
- The Green Deal Oversight and Regulation Body (ORB) – who administer the certification of GD organisations (including Assessors, installers and providers)
- Data on ECO brokerage is publically available following each auction
- Capita – who administer the Cashback Scheme and the [Green Deal Home Improvement Fund](#)

This report uses data from Landmark and the Energy Savings Trust for numbers of lodged Assessments and on measures installed using GD finance, data from the Central Charge Database on GD Plans, data from the Cashback and Green Deal Home Improvement Fund Scheme Administrator on vouchers issued and measures installed, data from Ofgem on ECO measures, data from the ORB for the supply chain and the published data on ECO brokerage.

The statistics presented in this report are used by a wide range of organisations. Please see the accompanying methodology note [here](#) for more details.

## Revision Policy

As with any data collection with a short time lag between data receipt and published release, there may be some data quality issues to resolve. Therefore data in these monthly releases should be treated as provisional and subject to revision.

Any revisions will be marked in the data tables and for any significant revisions we will provide an explanation of the main reasons.

## Further Information and Feedback

DECC launched a [user consultation](#) on 20 August, for 6 weeks, to assess impacts on user needs of making changes to this, the headline (monthly), and the detailed (quarterly) National Statistic series on Green Deal, ECO and insulation statistics. Potential outcomes could include a reduction in the frequency for some tables of this release from monthly to quarterly, and the detailed release from quarterly to annual. A user consultation is required for National Statistics and is in compliance with the Code of Practice for Official Statistics.

Any enquiries or comments in relation to this statistical release should be sent to DECC's Household Energy Efficiency Statistics Team at the following email address:

[EnergyEfficiency.Stats@decc.gsi.gov.uk](mailto:EnergyEfficiency.Stats@decc.gsi.gov.uk)

Contact telephone: 0300 068 5106

The statistician responsible for this publication is Peter Antoniadou.

Further information on energy statistics is available at:

<https://www.gov.uk/government/organisations/department-of-energy-climate-change/about/statistics>

### Next Releases

All future publications of this series will be released mid-month to cover the preceding month, with publication dates available on the gov.uk website.

The next monthly publication is planned for publication at 9.30am on **17 September 2015** and will contain the latest available information on the number of GD Assessments, GD Finance Plans and GDHIF vouchers paid, measures installed, a summary of ECO brokerage and an overview of the supply chain.



© Crown copyright 2015  
Department of Energy & Climate Change  
3 Whitehall Place  
London SW1A 2AW  
[www.gov.uk/decc](http://www.gov.uk/decc)