

# Heritage sub-group

Helen J Glass

Historic Environment Lead

HS2 Ltd

London

15 September 2016

Welcome & introductions

# Agenda

- Welcome
- Phase 1 Construction
- Community engagement
- Revising the Terms of Reference
- Phase 1 update
  - Bill progress
  - GWSI: HERDS
  - Other technical standards and procedures
- AOB

# Phase 1 Construction

# Acronym update!

- **PSC** – Professional Services Consultants
  - *Wrote the ES, have been doing non-intrusive surveys*
- **EWC** – Enabling Works Contract
  - *Will be doing the bulk of the work*
- **EDP** – Engineering Delivery Partner
  - *Providing HS2 with expertise to help deliver the project.*

# The teams

- Three *Contractors*
  - North – Central – South, each of which has:

- ▶ An environmental management team
  - Includes historic environment and other disciplines
- ▶ A supply chain to carry out the works
  - Includes historic environment:

- HS2 team

- Combines HS2 and EDP

- ▶ Construction directorate area teams:
  - Area lead - routewide
  - Area manager + advisor for each area (6 in total)
  - HERDS team - routewide manager, advisor +1 (2/3 total)
  - Built heritage specialist to support Laura Williams.
- ▶ Technical directorate 'pool of talent'
  - Technical expertise available as needed - currently 5 + 2 (7 total)

- Workforce planning

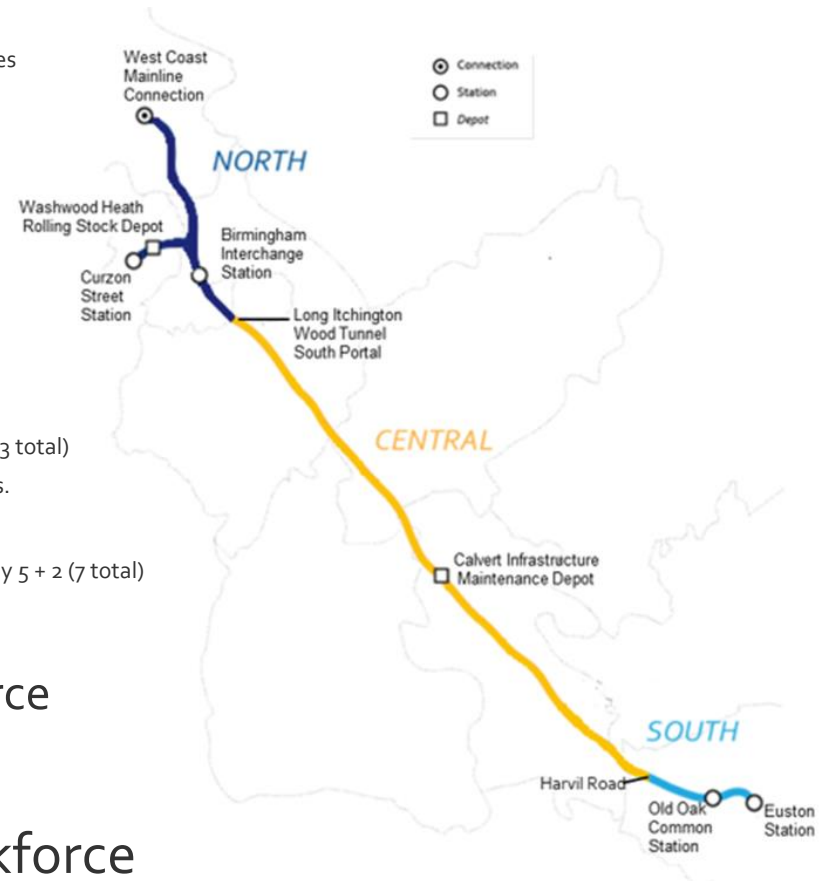
- Continual review of team resource

- ▶ HS2 recruitment
- ▶ EDP additional resource

- Non-historic environment workforce

- A huge team managing:

- ▶ Everything else! Contract admin, project management, H&S, Quality, community, stakeholder management and many many others.



# EDP tasks

- Detailed desk-based assessments of the 3 known burial grounds
- Burial ground technical support
- Historic building support
- Accelerated historic environment design
  - Project plans – programme critical
- 'Programme of heritage investigation and recording works'
  - 1<sup>st</sup> iteration
- Archiving technical support

# Accelerated design - engagement

- EDP to start project planning beginning October
- They will contact stakeholders Oct onwards
- HS2 will provide project plans to stakeholders for comment on a rolling basis:
  - EDP to provide us with a delivery programme;
  - Will be uploaded to Sharepoint and notified; and
  - 2 weeks to complete and return a comments sheet.
- First time that the scope of works is starting to take shape.

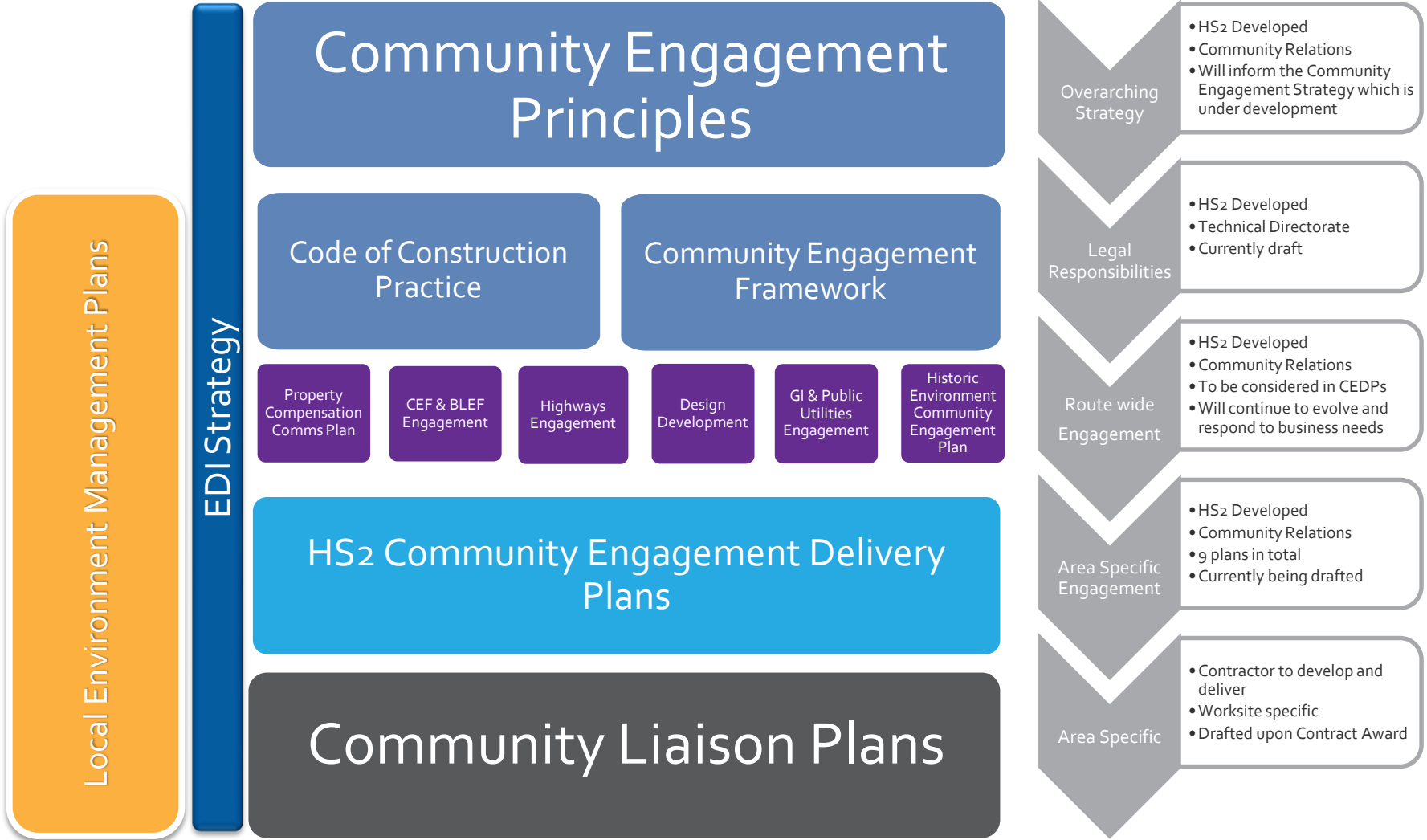


# In other news....

- Preparing Works Package Instructions for the Enabling Works Contractors.
  - Continuing with the non-intrusive surveys, as access is gained.
  - Monitoring of GI works.
  - NTH historic building recording.
  - Systems and preparedness.
- 
- We expect that intrusive fieldwork will start in Q1/Q2 2017....

# Community engagement

# Community engagement documents



# Historic Environment Engagement

- *The Secretary of State will require the nominated undertaker to develop a routewide strategy for archaeology and heritage community engagement and outreach with respect to archaeology and heritage. (Assurance No. 846).*

# Historic Environment Engagement

- HERDS
  - Headline Objectives
  - Specific Objectives
- Contractors Community Engagement Teams have a Community Engagement Plan
- Identify engagement opportunities within Project Plans
- Work with HS2 Community Engagement Teams

# Community Environment Fund & Business & Local Economy Fund

## **For the CEF-**

Applications for both CEF grants will be invited from community-based voluntary organisations, charitable and not-for-profit bodies, social enterprises, schools and local authorities.

## **For the BLEF-**

It will be for local business support organisations, including local authorities, to identify appropriate projects which will help maintain business activity in local communities. Applications will be invited for capital or revenue grants from £10,000 up to a maximum of £1 million

Phase 1 terms of reference

# Existing headings

- Purpose
- Membership
- Function
- Outputs
- Chair and meetings
- Record keeping



# Reflecting project progress

- Much stays the same
- Amendments to reflect
  - progression of project terminology, e.g. 'historic environment', supply chain, contractors
  - completed elements, e.g. the environmental minimum requirements
  - the next stages, e.g. detailed design and implementation

Phase 1 general update

# What's going on

- House of Lords
  - Bill progress
- GWSI: HERDS
  - Presented to HEAC
  - Refining document and final internal governance
- Technical standards and procedures
  - Ready documents for EWC
- Developing museums strategy

# Other activities

- Phase 2a
  - Public consultations launched on:
    - Working draft EIA report
    - Working draft equality impact assessment report
    - Design refinement
    - Supporting consultation events
- Phase 2
  - Information events held
  - Decision from SoS on preferred route in the Autumn

Next Heritage Sub-group  
Birmingham  
Tuesday 13<sup>th</sup> December

# AOB Questions

Thank you

# Agendas, notes and resources

<https://www.gov.uk/government/collections/hs2-phase-one-planning-forum-heritage-subgroup>



## Copyright notice

The copyright for this presentation remains with HS2 Ltd.

It cannot be reproduced as a whole or in part without written permission from HS2 Ltd.