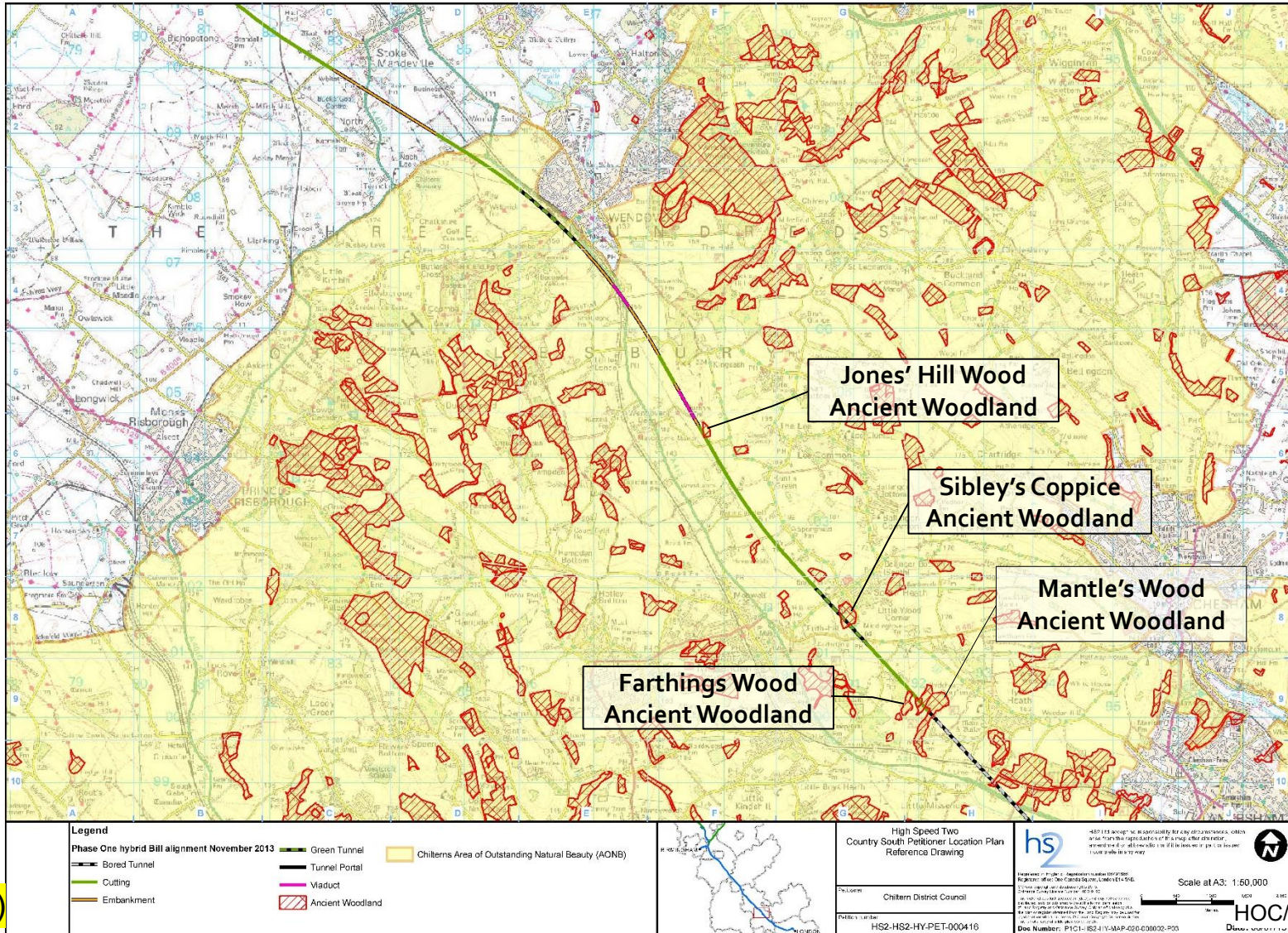


EXHIBIT LIST

Page 1 of 5

No	Exhibit Name	Page
1	P7566 Effects on Ancient Woodland within the Chilterns AONB	2 - 3
2	P7567 Ecology – Barn Owls and Bats	4 - 5

Effects on Ancient Woodland within the Chilterns AONB



Effects on Ancient Woodland within the Chilterns AONB

Total area of Ancient Woodland within Chilterns AONB	Area of Ancient Woodland (AW) within the Chilterns AONB, affected by Proposed HS2 Scheme				
Size (hectares)	Location	Hybrid Bill		AP Proposal	
		Size of loss (ha)	Size of loss (% of AW in AONB)	Size of loss (ha)	Size of loss (% of AW in AONB)
Approximately 11,000 ha of the Chilterns AONB is designated Ancient Woodland	Mantle's Wood	6.2 ha	0.056%	5.9 ha	0.054%
	Farthings Wood	0.5 ha	0.005%	0.5 ha	0.005%
	Sibley's Coppice	2.5 ha	0.028%	2.5 ha	0.028%
	Jones' Hill Wood	1.0 ha	0.009%	0.7 ha	0.006%
	TOTAL	10.2 ha	0.098%	9.6 ha	0.093%

Ecology – Barn owls

- As set out in Section 2, Volume 3 of the ES, the Promoter recognises that there will be significant adverse effects on the barn owl population within 1.5km of the Proposed Scheme;
- To offset this, opportunities to provide nesting boxes in areas outside 1.5km will be explored;
- The implementation of these measures would be likely to increase numbers of barn owl to offset the adverse effect; and
- If those proposed additional mitigation measures are implemented successfully, the residual effect would be reduced to a level that is not significant. (para 7.5.12 Volume 2 ES CFA10 and para 7.5.13 Volume 2 ES CFA9).

Ecology – Bats

- The ES was informed by bat surveys undertaken during 2012 and 2013 according to a standard approach (technical appendix to Volume 5 of the ES);
- Further bat surveys were undertaken in 2014 and the updated environmental baseline has been reported in the SES; and
- Additional surveys will be undertaken as appropriate to inform the European Protected Species licence application.

As set out in the Volume 2 ES, no significant residual effects are anticipated in CFAs 9 and 10:

CFA9 - Central Chilterns (From Hyde Heath to Great Missenden / South Heath)

- *Paragraph 7.5.5 sets out that any adverse effects will be reduced to a level that is **not significant** due to the planting over the South Heath green tunnel, and by the habitat connections along and over the Proposed Scheme.*

CFA10 - From Dunsmore to Wendover

- *Paragraphs 7.5.5 to 6 set out that any adverse effects will be reduced to a level that is **not significant** by the avoidance and mitigation measures; and*
- *Adjacent landscape planting will provide habitat corridors that will encourage bats towards safe crossing points at the Small Dean viaduct to the south and the Wendover green tunnel to the north.*