



19 August 2014

Year: 2014 Week: 33

In This Issue:

- Key messages.
- Diagnostic indicators at a glance.
- Weekly report statistics.
- Total attendances.
- Attendances by age.
- Triage.
- Respiratory.
- Gastrointestinal.
- Cardiac.
- Introduction to charts.
- Notes and caveats.
- Acknowledgements.

EDSSS weekly report statistics

Including new EDs which have recently started reporting*.



Key messages

Data to: 17 August 2014

Nothing new to report during week 33.

A Heat-Health Watch system operates in England from 1 June to 15 September each year. As part of the Heatwave Plan for England, the PHE Real-time Syndromic Surveillance team will be routinely monitoring the public health impact of hot weather using syndromic surveillance system during this period.

Heat-health watch level (current reporting week): level 1 **Summer preparedness**
<http://www.metoffice.gov.uk/weather/uk/heathealth/>

Diagnostic indicators at a glance:

Indicator	Current trend
Triage Severity Ratio	increasing
Respiratory	no trend
Acute Respiratory Infection	no trend
Bronchitis/ Bronchiolitis	no trend
Influenza-like Illness	no trend
Pneumonia	no trend
Asthma/ Wheeze/ Difficulty Breathing	no trend
Gastrointestinal	no trend
Gastroenteritis	decreasing
Cardiac	no trend
Myocardial Ischaemia	no trend
Meningitis	no trend
Heat/sunstroke	no trend

Further details on the syndromic indicators reported can be found on page 9.

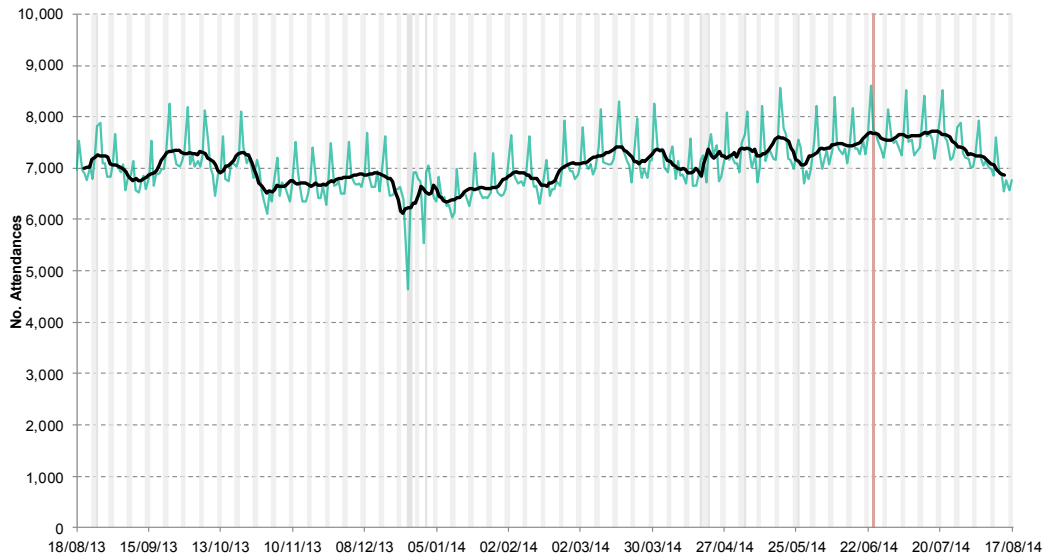
Date	Total Attendances	Triage Category Coded		Diagnoses Coded		EDs Reporting
		Number	%	Number	%	
11/08/2014	7,602	6,010	79.1	6,218	81.8	36
12/08/2014	6,898	5,451	79.0	5,764	83.6	36
13/08/2014	6,899	5,396	78.2	5,642	81.8	36
14/08/2014	6,556	5,087	77.6	5,402	82.4	36
15/08/2014	6,773	5,292	78.1	5,536	81.7	36
16/08/2014	6,575	5,352	81.4	5,379	81.8	36
17/08/2014	6,759	5,502	81.4	5,713	84.5	36
Total	48,062	38,090	79.3	39,654	82.5	(max)* 36

3 diagnosis systems in use: Snomed-CT (12EDs)
ICD10 (8EDs)
CDS (16EDs)

*Data from the new EDs will be presented in charts following a 14 day data validation.

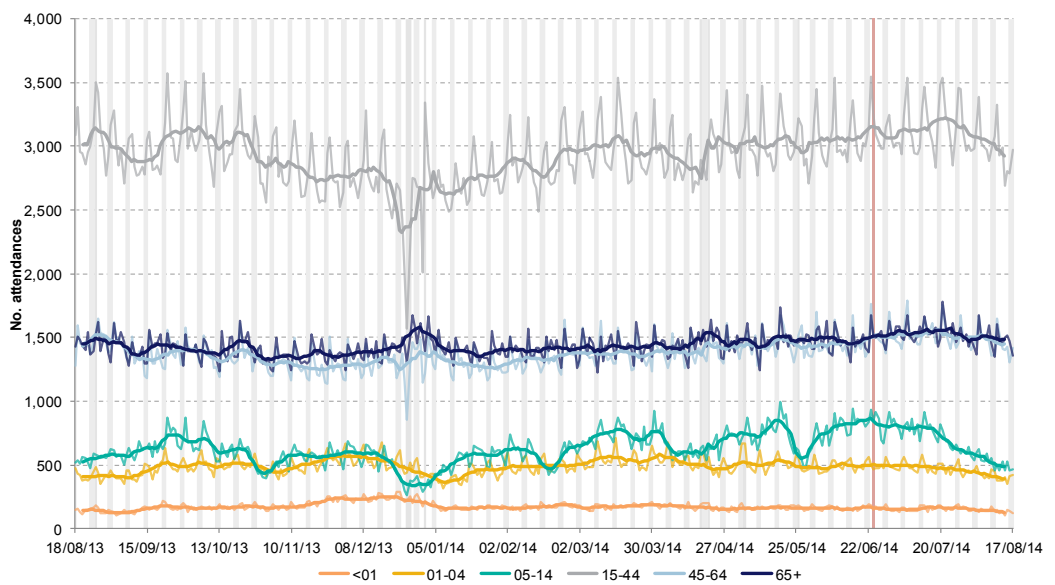
1: Total attendances.

Daily number of total attendances recorded across the EDSSS network.



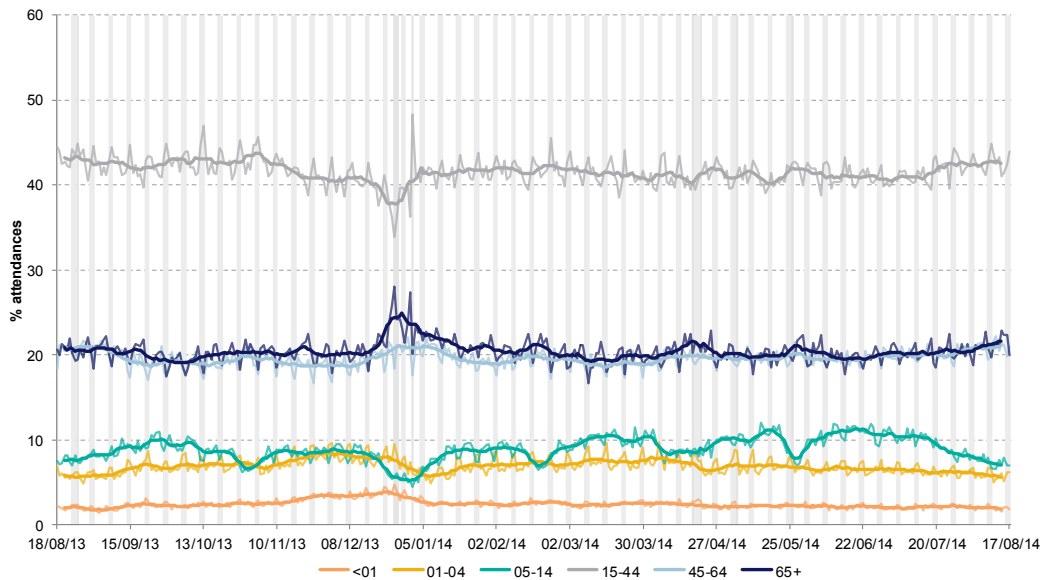
2: Daily attendances by age: Numbers.

Daily number of total attendances, by age group, recorded across the EDSSS network.



3: Daily attendances by age: Percentages.

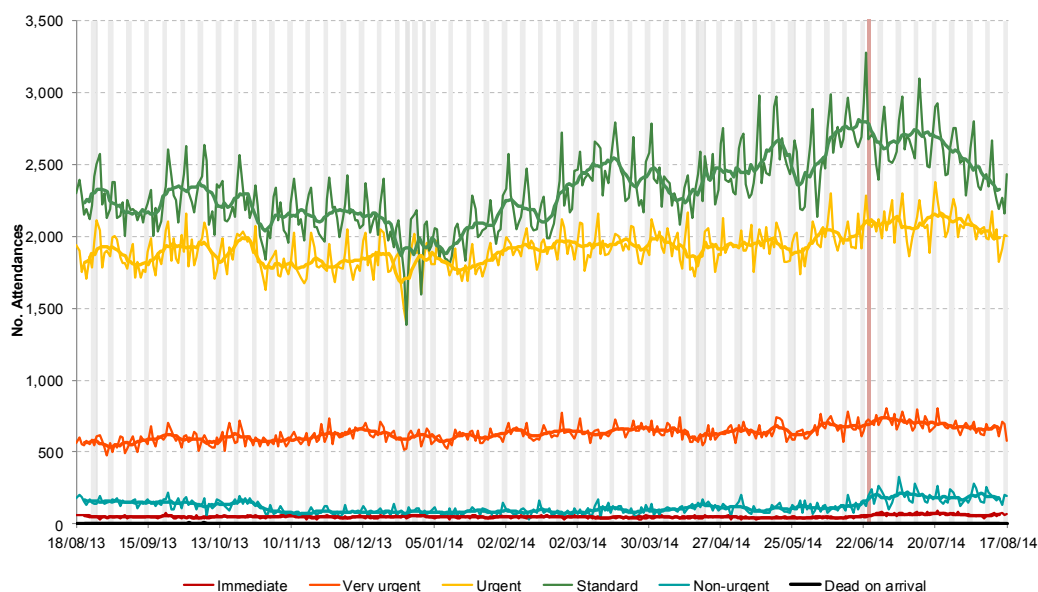
Daily percentage of total attendances by age group, recorded across the EDSSS network.



4: Triage category: severity of illness.

Triage category is assigned according to the clinical priority of each presenting patient.

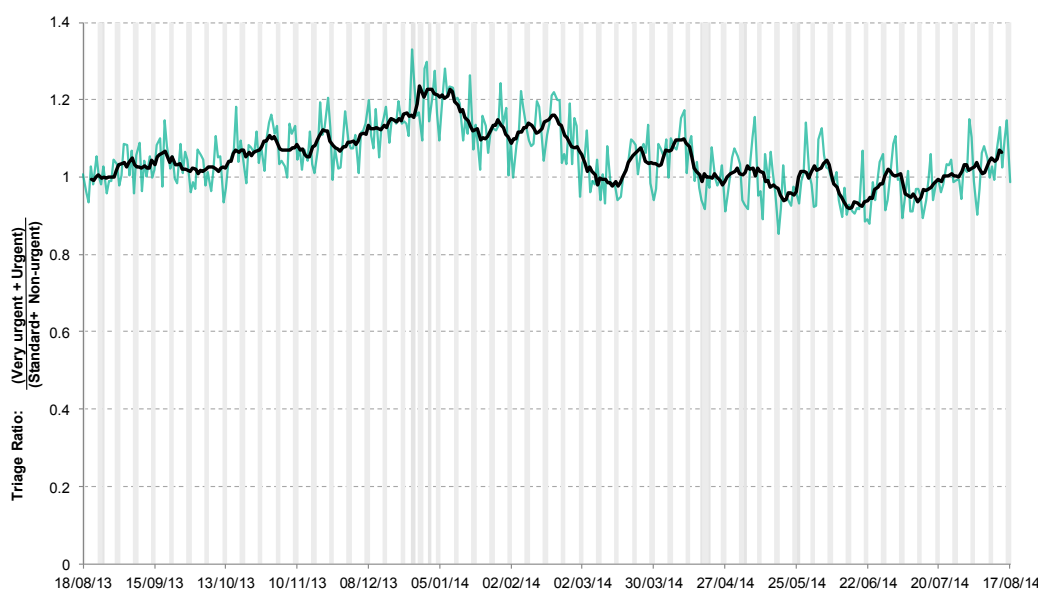
Includes 21/34 EDs.



5: Triage category severity ratio.

The ratio of patients classified as very urgent or urgent to those classified as standard or non-urgent.

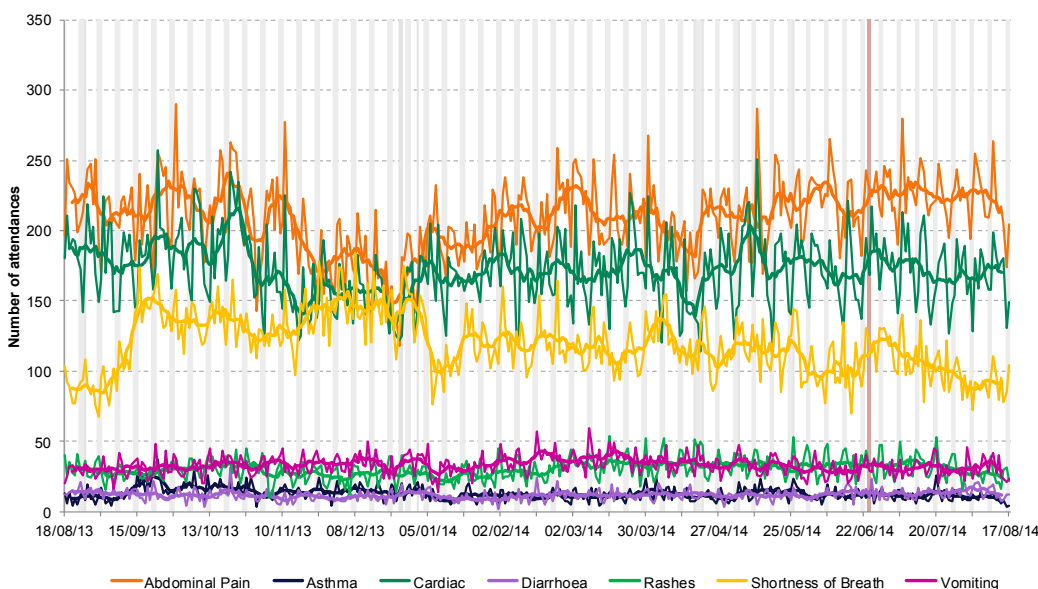
Includes 34/34 EDs.



6: Triage presentation.

Triage presentation indicators are based on the triage descriptors recorded in each ED. Data are displayed as the number of attendances recorded with triage information.

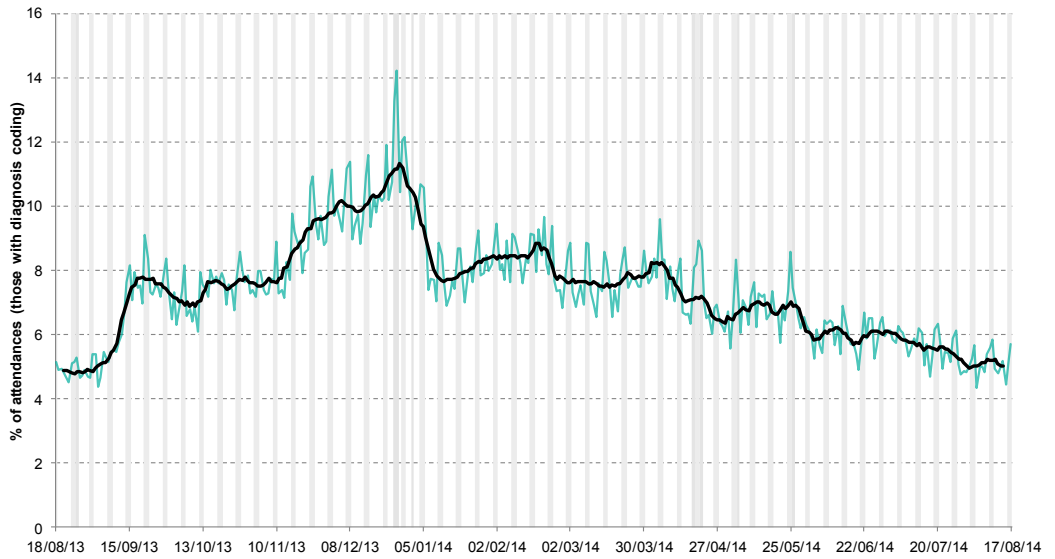
Includes 18/34 EDs which report standard terms, not using free text.



7: Respiratory.

Daily percentage of all attendances recorded as respiratory attendances across the EDSSS network.

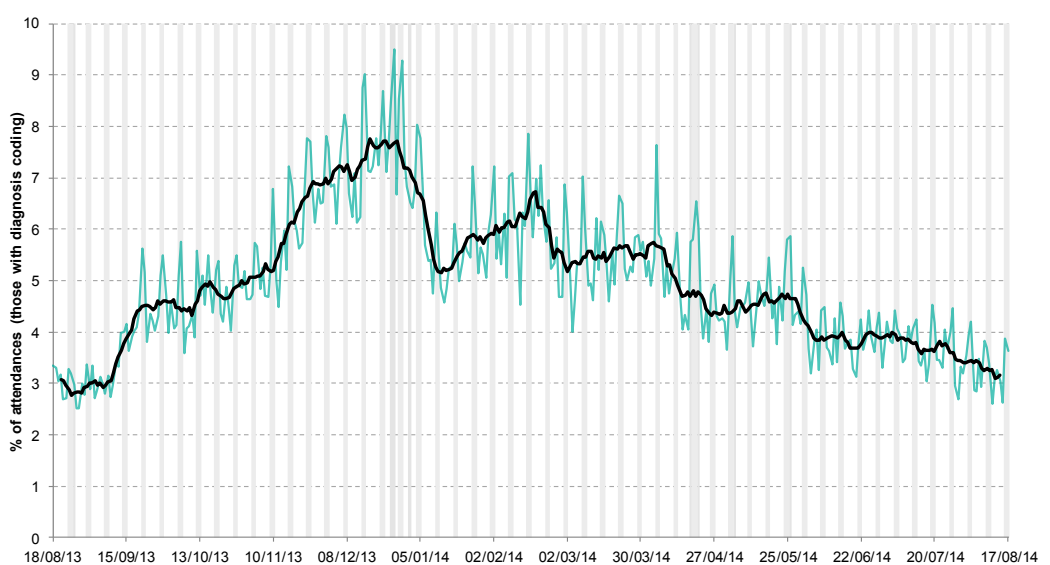
Includes 34/34 EDs.



8: Acute Respiratory Infection.

Daily percentage of all attendances recorded as acute respiratory infection attendances across the EDSSS network.

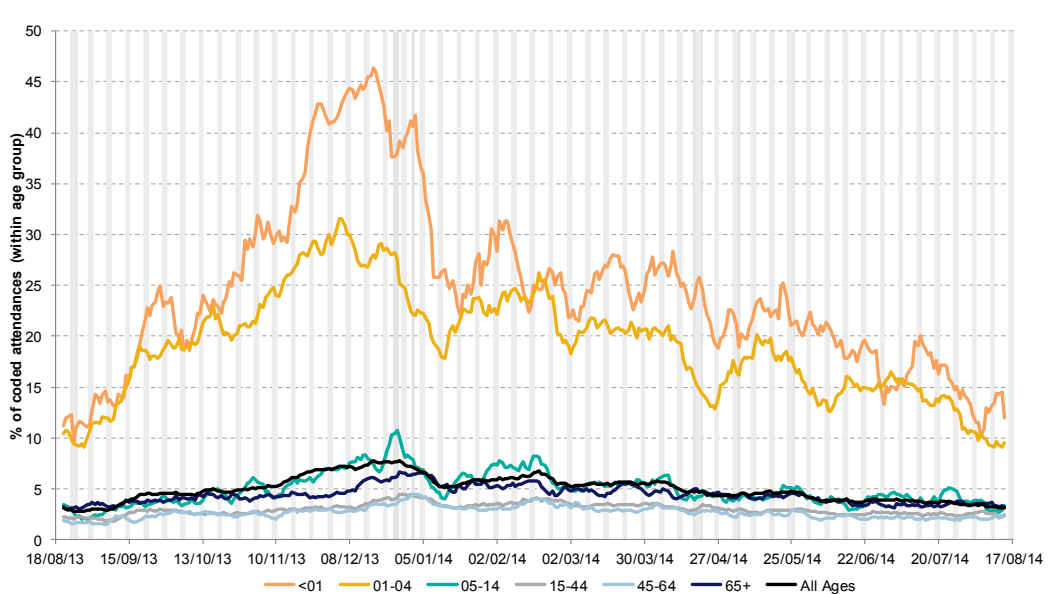
Includes 20/34 EDs.



9: Acute Respiratory Infection by age group.

7 day moving average of ARI attendances presented as a proportion of the attendances within each age group.

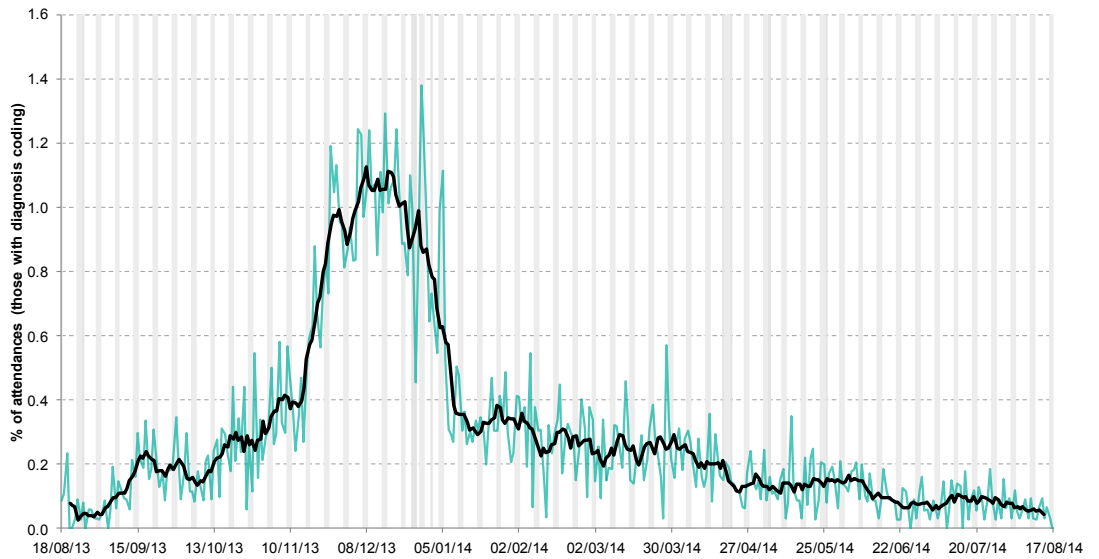
Includes 20/34 EDs.



**10: Bronchitis/
Bronchiolitis.**

Daily percentage of all attendances recorded as bronchitis/ bronchiolitis attendances across the EDSSS network.

Includes 20/34 EDs.



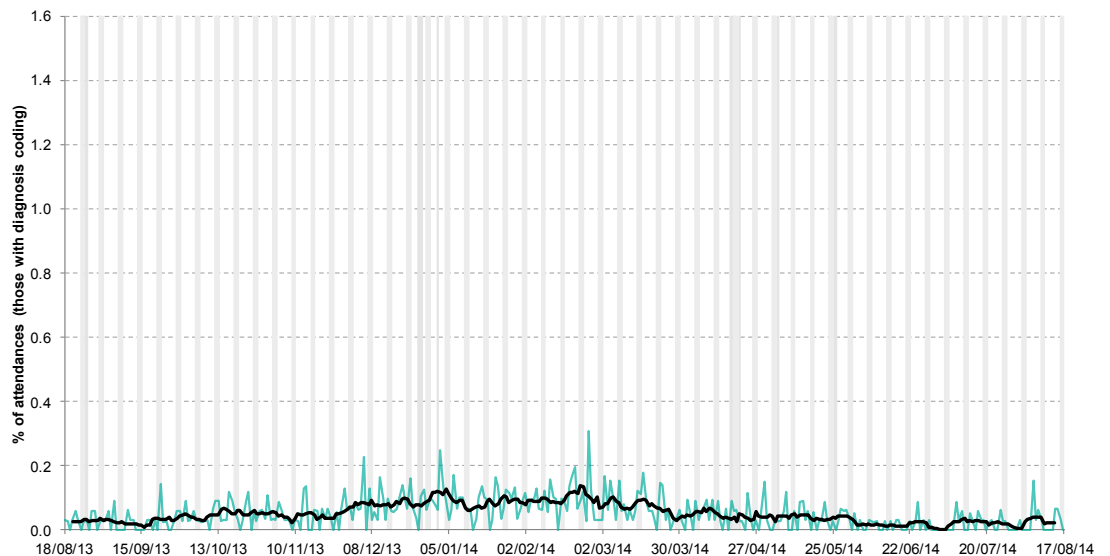
11: Intentionally left blank

Intentionally left blank.

12: Influenza-like illness.

Daily percentage of all attendances recorded as influenza-like illness attendances across the EDSSS network.

Includes 20/34 EDs.



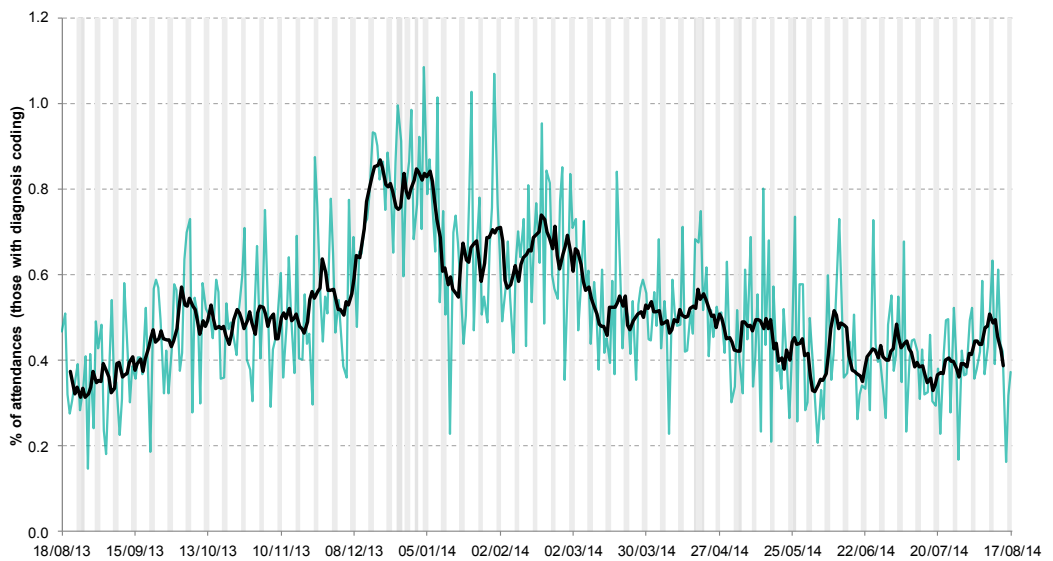
19 August 2014

Year: 2014 Week: 33

13: Pneumonia.

Daily percentage of all attendances recorded as pneumonia attendances across the EDSSS network.

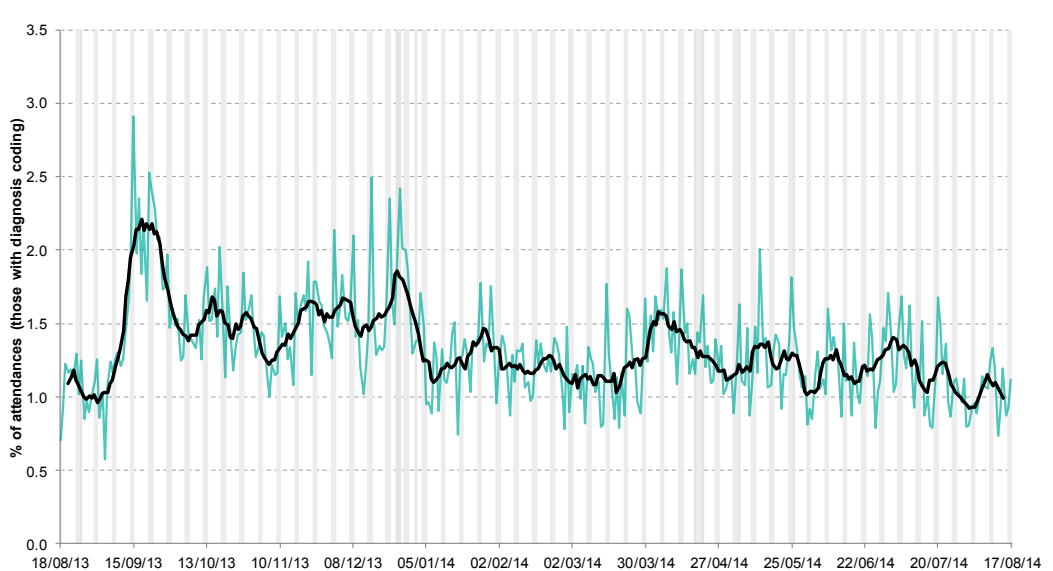
Includes 20/34 EDs.



**14: Asthma/Wheeze/
Difficulty Breathing.**

Daily percentage of all attendances recorded as asthma/wheeze/difficulty breathing attendances across the EDSSS network.

Includes 20/34 EDs.



**15: Intentionally left
blank**

Intentionally left blank.

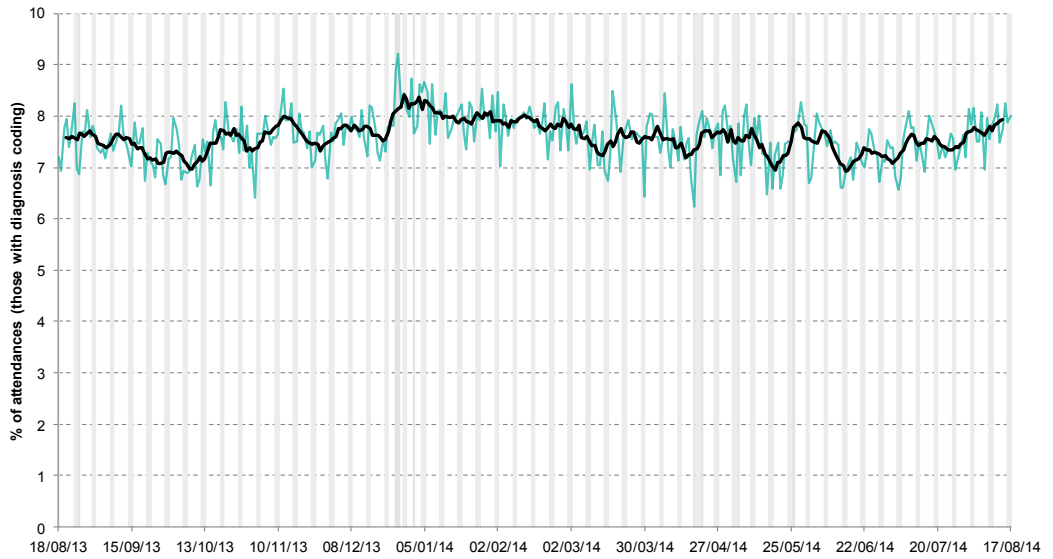
19 August 2014

Year: 2014 Week: 33

16: Gastrointestinal.

Daily percentage of all attendances recorded as gastrointestinal attendances across the EDSSS network.

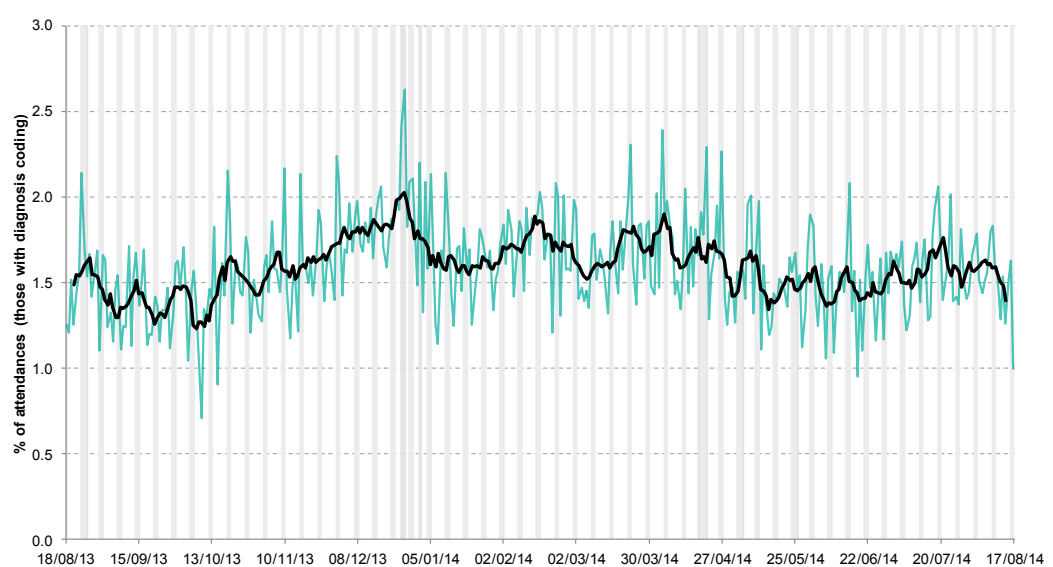
Includes 34/34 EDs.



17: Gastroenteritis

Daily percentage of all attendances recorded as gastroenteritis attendances across the EDSSS network.

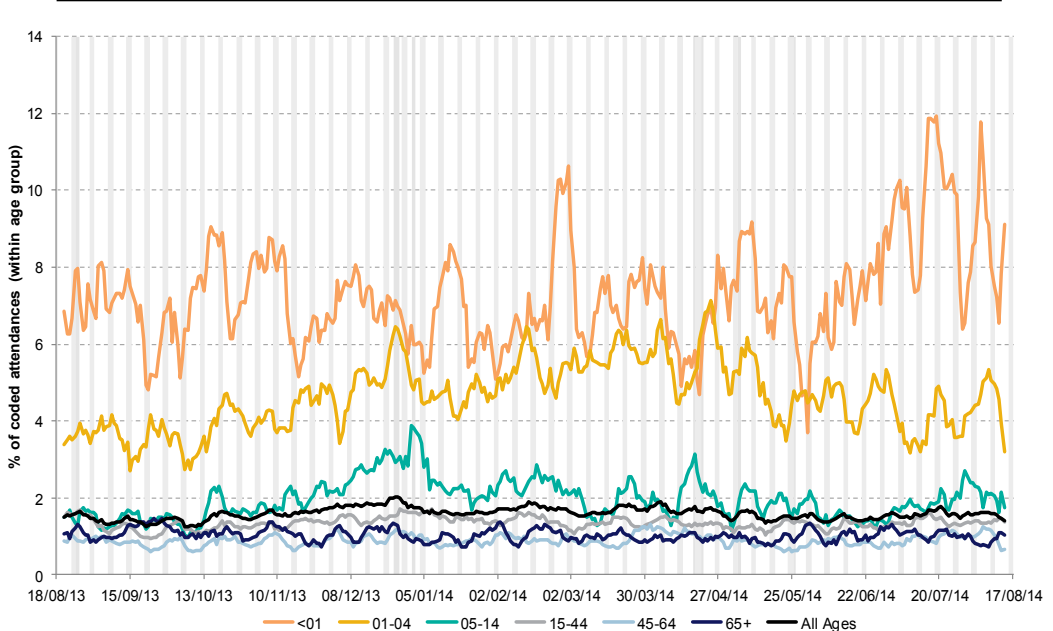
Includes 20/34 EDs.



18: Gastroenteritis by age group.

7 day moving average of gastroenteritis attendances presented as a proportion of the attendances within each age group.

Includes 20/34 EDs.



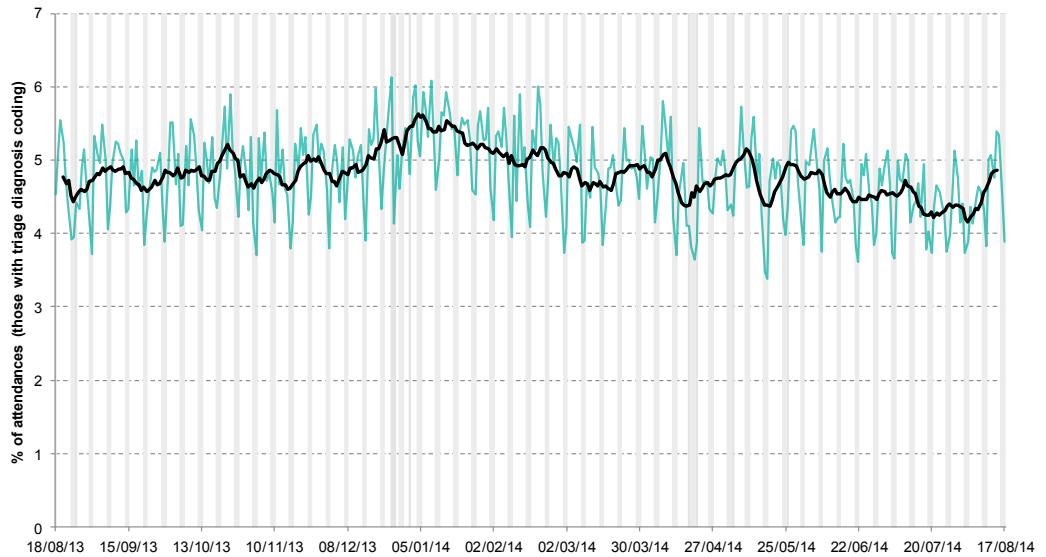
19 August 2014

Year: 2014 Week: 33

19: Cardiac.

Daily percentage of all attendances recorded as cardiac attendances across the EDSSS network.

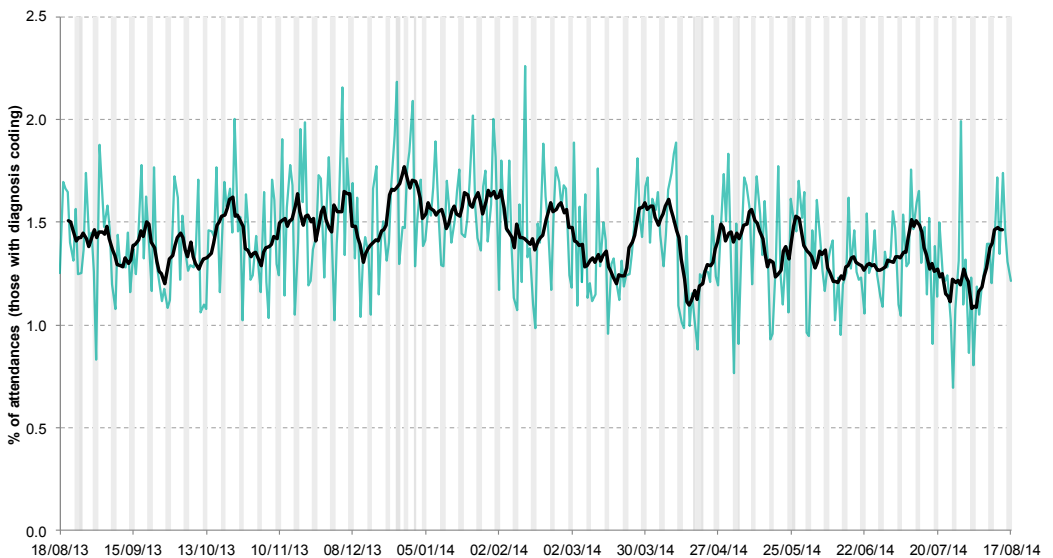
Includes 34/34 EDs.



20: Myocardial Ischaemia.

Daily percentage of all attendances recorded as myocardial ischaemia attendances across the EDSSS network.

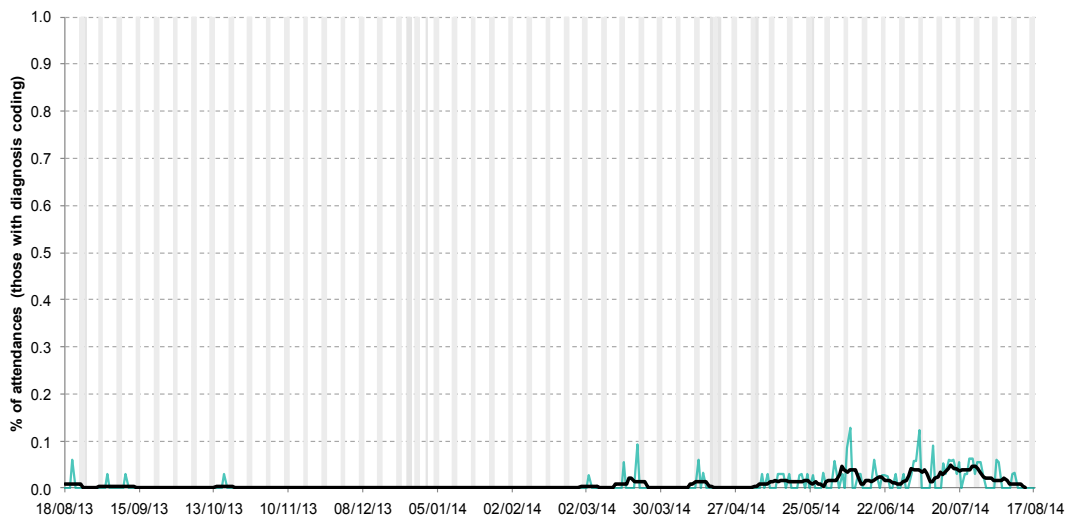
Includes 20/34 EDs.



21: Heat/sunstroke.

Daily percentage of all attendances recorded as heat/sunstroke attendances across the EDSSS network.

Includes 20/34 EDs.



Introduction to the EDSSS charts:

- ▶ Weekends and Bank holidays are marked by vertical **grey** lines (bank holidays **darker**).
- ▶ The entry of each new ED is marked by a vertical **red** line.
- ▶ **A new site is not included in charts until it has reported a minimum of 14 days.**
- ▶ A 7 day moving average is overlaid on the daily data reported in each chart, unless specified.
- ▶ Where the percentage attendances related to an individual syndromic indicator is given, the denominator used is the total number of attendances with a diagnosis code recorded.

Notes and caveats:

- ▶ Participating Hospital Emergency Departments (EDs) report to EDSSS through the automated daily transfer of anonymised data to PHE, for analysis and interpretation by the PHE Real-time Syndromic Surveillance Team (ReSST).
- ▶ Several EDSSS contributing departments are now using the new CEM Unified Diagnostic Dataset (UDDA) to record diagnoses. Where UDDA is in place the ICD-10 or Snomed-CT code is extracted for EDSSS reporting.
- ▶ The syndromic indicators presented in this bulletin are based on the WHO recommendations for syndromes to be used for mass gatherings. Each code system has been mapped to the syndromes described:

Level 1: Broad, generic indicator, available using all ED coding systems reported.

Level 2: More specific indicator, available from EDs using ICD10 and Snomed-CT.

Level 3: Very specific indicator, available from EDs using ICD10 and Snomed-CT.

Respiratory: All respiratory diseases and conditions (infectious and non infectious).

Acute Respiratory Infections (ARI): All acute infectious respiratory diseases.

Asthma/Wheeze/Difficulty Breathing: As indicated by title, including dyspnoea and stridor.

Bronchitis/ Bronchiolitis: As indicated by title (excluding 'chronic').

Influenza-like Illness (ILI): As indicated by title.

Pneumonia: As indicated by title.

Cardiac: All cardiac conditions (including 'chest pain').

Myocardial Ischaemia: All Ischaemic heart disease.

Gastrointestinal: All gastrointestinal diseases and conditions (infectious and non infectious).

Gastroenteritis: All infectious gastrointestinal diseases.

Other (chart only presented when a public health need):

Meningitis: All cause meningitis (exc. meningococcal disease without mention of meningitis).

Heat/ sunstroke: As indicated by title.

- ▶ Details on diagnosis are not consistently recorded for all ED attendances and the levels of attendances coded vary considerably between each ED.
- ▶ Where the diagnosis codes used in an individual ED cannot be matched to level 2 and 3 syndromic indicators, the ED is excluded from the analysis of those indicators.
- ▶ If you are interested in joining the EDSSS please contact ReSST using the details below.

Acknowledgements:

We are grateful to the clinicians in each ED and other staff within each Trust for their help and continued involvement in the EDSSS.

We thank L2S2 Ltd for undertaking the daily extraction and transfer of anonymised attendance data from all participating EDs.

We thank Ascribe Ltd for facilitating data extraction at the relevant EDSSS sites.



Contact ReSST:
syndromic.surveillance
@phe.gov.uk

Emergency Department Syndromic Surveillance System Bulletin.

Produced by: PHE Real-time Syndromic Surveillance Team
6th Floor, 5 St Philip's Place, Birmingham, B3 2PW

Tel: 0844 225 3560 > Option 4 > Option 2

Fax: 0121 236 2215

Web: <http://www.hpa.org.uk/Topics/InfectiousDiseases/InfectionsAZ/RealtimeSyndromicSurveillance>