

Hub fatal risk campaign – overhead hazards

Month Two “Lifting operations”

Our latest campaign running from February to April 2016 covers working at height, lifting operations and overhead protection. The campaign supports the Highways England Health & Safety 5 Year Plan and supports Action 60 Managing High Risk Activities.

The March campaign is aimed at highlighting the significance and associated risks of ‘routine’ lifting operations (not cranes) and identifies methods to reduce the risk associated to these operations conducted in highways construction and maintenance.

The campaign focuses on safe practice in the use of Lorry Loaders, Mobile Elevating Work Platforms (MEWP’s), Excavators and Telehandlers/Forklifts whilst being utilised for lifting operations.

Resource information includes short duration videos, HSE and industry safe practice and raising the bar guidance, as well as examples of safety management system standards, tool box talks, and historic safety communications.

The resources can be found at:

<http://www.highwaysafetyhub.com/overhead-hazards.html>



Raising the Bar Document 23 Site inductions revised.

Raising the bar document no 23 is being updated as part of Highways England five year health and safety plan. The update aims to improve the provision for health and safety management of site visitors. It also provides additional provision for delivery drivers and plant/vehicle maintenance personnel.

Distinctions have been made between types of site personnel and visitors as well as types and levels of induction required ranging from full, occasional site visitors and delivery drivers through to task/location and daily/nightly activity briefings.

When published, the revised document will be found at: <https://www.gov.uk/government/collections/health-and-safety-for-major-road-schemes-raising-the-bar-initiative>

Health Update – February 2016

Eighteen tasks in the Highways England 5 Year Health and Safety Plan feature Health as part of the commitment to raise the profile of Health throughout Highways England and the wider industry.

Work has commenced on new guidance for managing fatigue, recording ill health and the development of a health and safety maturity matrix.

In the October briefing we talked about the risks associated with cutting concrete barrier and now we have some positive news. Extrudakerb have continued to refine the new technology for cutting concrete barrier.

In comparison to a traditional cut off saw, benefits include:

- No hand arm vibration
- Reduced noise
- Dust suppression
- Elimination of manual handling
- Productivity improvements

The system has been thoroughly trialled and proven on the network, more saws are being manufactured to ensure that capacity will not be an issue.

Extrudakerb have relinquished their exclusivity license arrangement with the saw manufacturer and this has been transferred to an established nationwide saw cutting contractor to ensure the

technology is available to all slip-form contractors. This innovation will assist in safeguarding the health of the workforce and identifies the benefits that are achievable by challenging and reviewing existing working practices.



Highways England Alerts:

Safety Alert 170, Removing Logs and Timber from site

Previous Safety Alerts can be found at:

<http://www.highwayssafetyhub.com/alerts.html>

New Traffic Management Training Requirement 1 April 2016

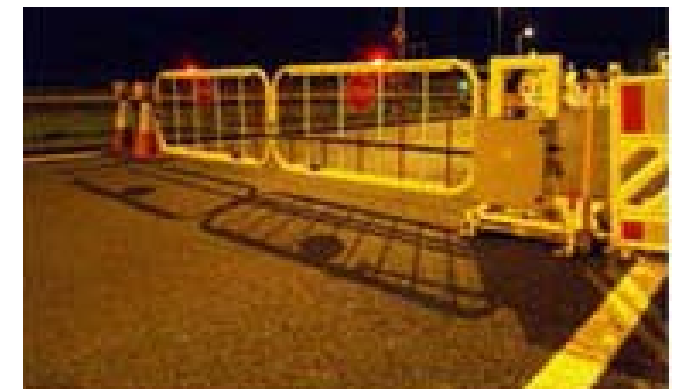
From 1st April 2016 all Traffic Management Operatives who are new to the industry or do not hold existing NHSS TTM cards (i.e. 12D M1/ M2) will need to have achieved the Temporary Traffic Management Basic Course (TTMBC) prior to being able to work as a Traffic Management Operative. The TTMBC is a pre-requisite to the 12A/B and 12C Operative courses and provides a basic introduction to the industry.

Traffic management companies and training providers were notified of the requirements during 2015 and training has been available from June 2015.

Principal Contractors working for Highways England are reminded to check the competence of their TM operatives and where an individual cannot present a 12A/B/C Operative qualification then they need to have attended the TTMBC.

More information can be found at:

<http://www.lantra.co.uk/awards/product/nhss-12-ab-temporary-traffic-management-basic-course-ttmbc>



Send your best practice, alerts and news to SmartMotorways@highwaysengland.co.uk

Department for Transport issues Reported Road Casualties in Great Britain for year ending 2015

The publication provides the number of reported road casualties in Great Britain that were reported to the police for year ending September 2015 (Quarterly provisional estimates to September 2015). The document also includes the number of people killed or injured in these accidents and which road user group they were in.

- A total of 23,700 people were killed or seriously injured in the year ending September 2015, down by 3 per cent from the previous year.
- There were 188,830 casualties of all severities in the year ending

- September 2015, down by 3 per cent from the previous year and rose by 2.2 per cent compared with the year ending September 2014.
- The overall casualty rate per vehicle mile decreased by 5 per cent over the same period.

https://www.gov.uk/government/uploads/system/uploads/attachment_data/file/498157/quarterly-estimates-jul-to-sep-2015.pdf

New sentencing guidelines come into force

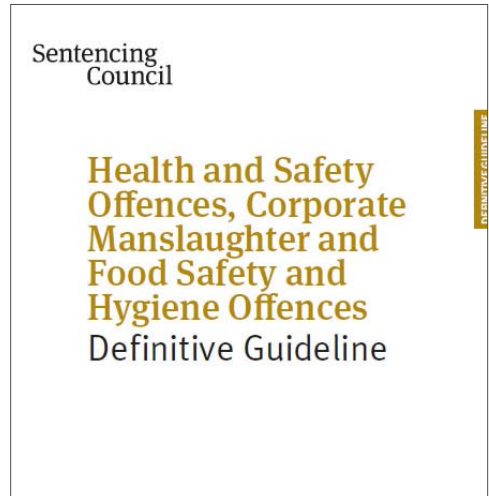
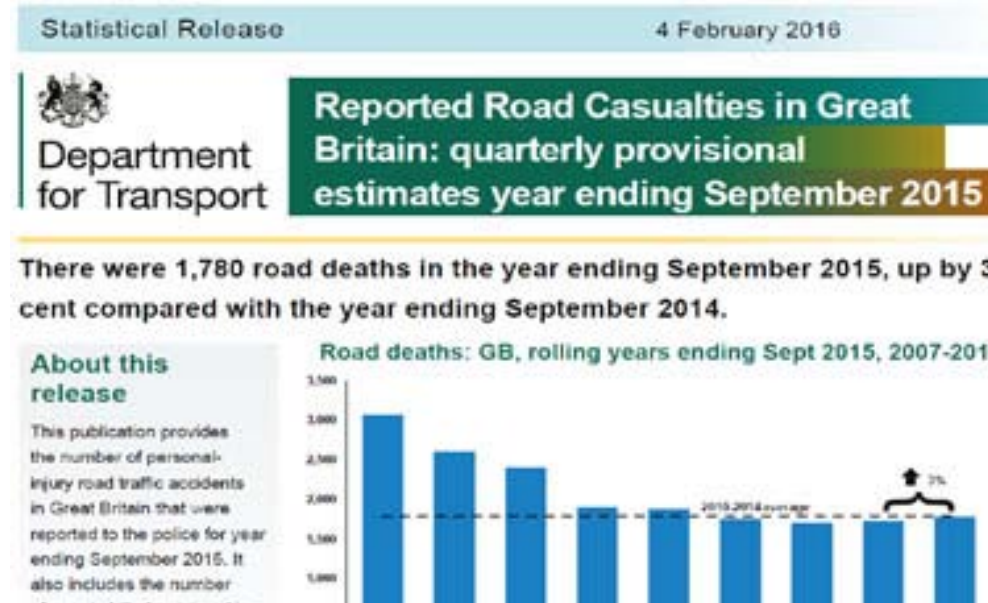
From 1st February 2016, Crown and Magistrates Courts in England and Wales will be bound by a new guideline (Health and Safety Offences, Corporate manslaughter and Food Safety and Hygiene Offences) when sentencing organisations/individuals who have been convicted of breaking health and safety law.

The changes signal increased fines and greater likelihood of imprisonment for health and safety failings.

The new guidelines, which will, in some cases, results in far greater fines than courts are currently imposing, reflect a shift in not only public opinion but concerns among members of the judiciary. The guideline specifies offence ranges and the range of sentences appropriate for each type of offence. Within each offence, there are a

specified number of categories which reflect varying degrees of seriousness. The offence range is split into category ranges, with sentences appropriate for each level of seriousness.

More information can be found at: <https://www.sentencingcouncil.org.uk/wp-content/uploads/HS-offences-definitive-guideline-FINAL-web.pdf>



2016 ACTION PLAN

Action	Responsible	Start	End	Q1	Q2	Q3	Q4	Q1	Q2	Q3	Q4
1. Develop and implement a health and wellbeing strategy	HS&E	2016-01-01	2016-12-31								
2. Establish a health and wellbeing committee	HS&E	2016-01-01	2016-12-31								
3. Develop a health and wellbeing action plan	HS&E	2016-01-01	2016-12-31								
4. Implement the health and wellbeing action plan	HS&E	2016-01-01	2016-12-31								
5. Monitor and report on the health and wellbeing action plan	HS&E	2016-01-01	2016-12-31								
6. Review the health and wellbeing action plan	HS&E	2016-01-01	2016-12-31								
7. Communicate the health and wellbeing action plan	HS&E	2016-01-01	2016-12-31								
8. Engage with stakeholders on the health and wellbeing action plan	HS&E	2016-01-01	2016-12-31								
9. Provide training on the health and wellbeing action plan	HS&E	2016-01-01	2016-12-31								
10. Conduct health and wellbeing audits	HS&E	2016-01-01	2016-12-31								
11. Implement health and wellbeing measures	HS&E	2016-01-01	2016-12-31								
12. Review health and wellbeing measures	HS&E	2016-01-01	2016-12-31								
13. Communicate health and wellbeing measures	HS&E	2016-01-01	2016-12-31								
14. Engage with stakeholders on health and wellbeing measures	HS&E	2016-01-01	2016-12-31								
15. Provide training on health and wellbeing measures	HS&E	2016-01-01	2016-12-31								
16. Conduct health and wellbeing audits	HS&E	2016-01-01	2016-12-31								
17. Implement health and wellbeing measures	HS&E	2016-01-01	2016-12-31								
18. Review health and wellbeing measures	HS&E	2016-01-01	2016-12-31								
19. Communicate health and wellbeing measures	HS&E	2016-01-01	2016-12-31								
20. Engage with stakeholders on health and wellbeing measures	HS&E	2016-01-01	2016-12-31								

Balfour Beatty Launch “The Road to Improved Health and Wellbeing in Major Highways”

The Balfour Beatty Major Highways Division has launched a 3 year plan to maintain and improve the Health and Wellbeing of all persons involved or affected by its activities. The plan has been developed specifically for the Highways sector and has been rolled out to all live Highways projects. The initiative received a “Blue Star” during a project audit in January and focuses on four key areas;-

- 1) Design and Working Practices
- 2) Health and Wellbeing Education
- 3) Effective Health and wellbeing Leadership
- 4) Health Surveillance

The plan is supplemented with an annual action plan which includes 20 fundamental actions including;- Health and Wellbeing training for managers, engineers and supervisors, 25% of all HS&E and senior managers engagement tours focussing on Health and wellbeing, the availability of free fruit at every work location once per week. February saw the launch of a bi-annual health quiz to gauge the workforces understanding of Health and Wellbeing issues with a first prize of a luxury weekend for two at a health spa.



© Crown copyright 2016.
 You may re-use this information (not including logos) free of charge in any format or medium, under the terms of the Open Government Licence. To view this licence: visit www.nationalarchives.gov.uk/doc/open-government-licence/ write to the **Information Policy Team, The National Archives, Kew, London TW9 4DU**, or email psi@nationalarchives.gsi.gov.uk. This document is also available on our website at www.highways.gov.uk
 If you have any enquiries about this publication email info@highwaysengland.co.uk or call **0300 123 5000***. Please quote the Highways England publications code **PR11/15**. Highways England creative job number S150792
 *Calls to 03 numbers cost no more than a national rate call to an 01 or 02 number and must count towards any inclusive minutes in the same way as 01 and 02 calls. These rules apply to calls from any type of line including mobile, BT, other fixed line or payphone. Calls may be recorded or monitored.
 Registered office Bridge House, 1 Walnut Tree Close, Guildford GU1 4LZ. Highways England Company Limited registered in England and Wales number 09346363