

Royal Navy and Royal Marines Monthly Personnel Situation Report for 1 October 2016



Ministry of Defence

(Published 17 November 2016)

Statistical Release

Issued by:
Defence Statistics

The statistician responsible for this report is the Defence Statistics (Navy) Head of Branch.

Email:
Defstrat-stat-navy-hd@mod.uk

If you would like to be informed by email of updates to this publication please subscribe via email:
Defstrat-stat-Navy@mod.uk

We welcome feedback, comments and queries on this report. Please contact us on the above email

The Background Quality Report for this publication can be found at:
[Background Quality Report](#)

Links to other publications which may be of interest

[UK Armed Forces Monthly Personnel Statistics](#) This publication provides information on the number of Military Personnel in (defined as the strength), joining (intake) and leaving (outflow) the UK Armed Forces. Detail is provided for both the Full-time Armed Forces and Reserves

[Royal Navy Quarterly Pocket Brief](#) This quarterly publication contains information on strengths, requirements, intakes and outflows from the Royal Navy service

This publication is a monthly report providing information on the number of Royal Navy and Royal Marine personnel joining and leaving the Regular service. It also shows the strengths of the Regular and Full Time Reserves Service (FTRS) Royal Navy and Royal Marines by rank and Length of Service. This publication is complemented by the [Royal Navy Quarterly Pocket Brief](#) which also shows breakdown of ethnicity in the RN/RM, Army and RAF.

Information about some of the tables used in this report The Royal Marine Aircrew-men are included with Warfare (Air); Royal Marine Medical Assistants are included with Medical. Where an RM/RN total split is given they are included with the RM. Warfare Officers include Royal Marine pilots. From August 2015 Communication and Information Specialists are now counted towards Engineer Technician (Weapon Engineer) having moved from Warfare branch. This has implications for tables 1a, 9b, 10b and 12b. FTRS are only included in table 1, unless otherwise stated.

Voluntary Outflow (VO) Voluntary Outflow exit rates are calculated using the 12 month total VO divided by the average strength, which is calculated using a 12 month centered rolling average. This centres the data and gets a midpoint month. 13 months of strengths are used, starting mid-way through one month and ending mid-way through the same month a year later. This way the moving average VO rate falls on a specific month rather than being in between months.

Key points for October 2016

Strengths

- The trained regular strength of the RN/RM including FTRS Regulars was 29,520 giving a deficit of 2.1% against the liability as shown in Table 1a.
- The trained regular strength excluding FTRS regulars was 29,200, the same as the previous month, also shown in Table 1a.

Outflows

- The total outflow from the trained regular strength excluding FTRS, was 2,440 in the 12 months to 1 October 2016, made up of 2,060 Ratings and 380 Officers as shown in Tables 9a and 9b.

Royal Navy and Royal Marines Monthly Personnel Situation Report - Contents List

[Summary of NATO Ranks](#)

[Glossary of Terms and Definitions used within this publication](#)

[Revisions](#)

[Data Sources](#)

[Data Issues - Strengths and Weaknesses](#)

[Rounding Policy](#)

[Liability](#)

[Feedback](#)

Current and Historic Trained Strengths

- 1a. Trained strengths and liability
- 1b. Summary of RN/RM strengths by service and arm
- 1c. Graph of historic Trained Regular strengths and liability by Quarter
- 1d. Graph of historic Trained Regular strengths and liability by Month

Trained strengths by Branch, Specialisation and Arm

- 2a. Trained Regular Officer strengths and liability by Branch, Specialisation and Arm
- 2b. Trained Regular Ratings strengths and liability by Branch, Specialisation and Arm
- 2c. FTRS Officers (Regular and Non Regular) strengths and liability by Branch, Specialisation and Arm
- 2d. FTRS Ratings (Regular and Non Regular) strengths and liability by Branch, Specialisation and Arm

Trained Regular strengths by branch and paid rank

- 3a. Trained Regular Officer strengths and liability
- 3b. Trained Regular Ratings strengths and liability
- 3c. Graphs of Trained Regular Officer surplus/deficit by paid rank
- 3d. Graphs of Trained Regular Ratings surplus/deficit by paid rank
- 3e. FTRS Officer strengths by branch and paid rank
- 3f. FTRS Ratings strengths by branch and paid rank

Trained Regular strengths by branch specialisation, arm and paid rank

- 4a. (GS) Trained Regular Officer General Service strengths by Branch, Specialisation, Arm and paid rank
- 4a. (SM) Trained Regular Officer Submariner strengths by Branch, Specialisation, Arm and paid rank
- 4a. (FAA) Trained Regular Officer Fleet Air Arm Branch, Specialisation, Arm and paid rank
- 4b. (GS) Trained Regular Ratings General Service strengths by Branch, Specialisation, Arm and paid rank
- 4b. (SM) Trained Regular Ratings Submariner strengths by Branch, Specialisation, Arm and paid rank
- 4b. (FAA) Trained Regular Ratings Fleet Air Arm strengths by Branch, Specialisation, Arm and paid rank

Untrained Regular strengths by branch and Paid Rank

- 5a. Untrained Regular Officer strengths by Branch and paid rank
- 5b. Untrained Regular Ratings strengths by Branch and paid rank

Trained Regular strengths by Top Level Budget (TLB) and paid rank

- 6a. Trained Regular strength by TLB and paid rank

Trained Regular length of service (LoS)

- 7a. Trained Regular length of service by rank
- 7b. Graph of Trained Regular Officer length of service by paid rank split by RN and RM
- 7c. Graph of Trained Regular Rating length of service by paid rank split by RN and RM

Trained regular Officer and Rating due outflow over the next 12 months

- This table was removed from the publication in July 2013

Trained Regular outflow

- 9a. Trained Regular Officer outflow
- 9b. Trained Regular Rating outflow

Trained Regular Voluntary Outflow

- 10a. Trained Regular Officer voluntary outflow exits by paid rank
- 10b. Trained Regular Rating voluntary outflow exits by paid rank

Trained regular promotion to substantive rank

- 11a. Trained Regular Officer promotions to substantive rank
- 11b. Trained Regular Ratings promotions to substantive rank

Gains to the Trained Strength (GTS)

- 12a. Gains to the Officer Trained strength by Branch
- 12b. Gains to the Ratings trained strength by Branch

Trained Intake from 'Civil Life' or 'Another Service'

- 13a. Trained intake to the regular service

Summary of NATO Ranks

Officers				
NATO Rank	Royal Navy	Royal Marines	Army	RAF
OF10	Admiral of The Fleet	N/A	Field Marshal	Marshal of the RAF
OF9	Admiral of The Fleet	General	General	Air Chief Marshal
OF8	Vice Admiral	Lieutenant General	Lt – General	Air Marshal
OF7	Rear Admiral	Major General	Major General	Air Vice Marshal
OF6	Commodore	Brigadier	Brigadier	Air Commodore
OF5	Captain	Colonel	Colonel	Group Captain
OF4	Commander	Lt Colonel	Lt Colonel	Wing Commander
OF3	Lieutenant Commander	Major	Major	Squadron Leader
OF2	Lieutenant	Captain	Captain	Flight Lieutenant
OF1	Sub-Lieutenant	Lieutenant / 2 nd Lieutenant	Lieutenant / 2 nd Lieutenant	Flying Officer / Pilot Officer
OFD	Officer Designate	Officer Designate	N/A	N/A

Ratings				
NATO Rank	Royal Navy	Royal Marines	Army	RAF
OR9	Warrant Officer 1	Warrant Officer 1	Warrant Officer 1	Warrant Officer
OR8	Warrant Officer 2	Warrant Officer 2	Warrant Officer 2	N/A
OR7	Chief Petty Officer	Colour Sergeant	Staff Sergeant	Flight Sergeant
OR6	Petty Officer	Sergeant	Sergeant	Sergeant
OR5	N/A	N/A	N/A	N/A
OR4	Leading Rate	Corporal	Corporal	Corporal
OR3	N/A	Lance Corporal	Lance Corporal	N/A
OR2	Able Rate	Marine (1 st Class)	Private	JT/LAC/SAC/AC
OR1*	Ordinary Rate / Junior	Marine (2 nd Class) / Junior	N/A	N/A

* Now obsolete

Glossary of Terms and Specialisations used within this publication

Term	Definition
Officer	An officer is a member of the Armed Forces holding the Queen's Commission to lead and command elements of the forces. Officers form the middle and senior management of the Armed Forces. This includes ranks from Sub-Lt/2nd Lt/Pilot Officer up to Admiral of the Fleet/Field Marshal/Marshal of the Royal Air Force, but excludes Non-Commissioned Officers
Other Ranks / Ratings	Other Ranks are members of the Royal Marines who are not Officers (but Other Ranks do include Non-Commissioned Officers). The equivalent group in the Royal Navy is known as "Ratings".
Ministry of Defence	The Ministry of Defence (MOD) is the United Kingdom government department responsible for the development and implementation of government defence policy and is the headquarters of the UK Armed Forces. The principal objective of the MOD is to defend the United Kingdom and its interests. The MOD also manages day to day running of the armed forces, contingency planning and defence procurement.
RNR	Royal Naval Reserve is the Volunteer Reserve element of the Royal Navy. Together with the Royal Marine Reserve they make up the Maritime Reserve .
RMR	Royal Marine Reserve is the Volunteer Reserve element of the Royal Marines. Together with the Royal Naval Reserve they make up the Maritime Reserve .
Maritime Reserve	Is the Volunteer Reserve element of the Naval Service that count towards the Future Reserve 2020 (FR20) programme. They comprise the Royal Naval Reserve and the Royal Marine Reserve and include mobilised and High Readiness Maritime Reserve personnel, plus Maritime Reserve personnel serving on FTRS and ADC contracts. The FR20 Trained Strength target for the Maritime Reserve is 3,100.
FTRS	<p>FTRS (Full-Time Reserve Service) are personnel who fill Service posts for a set period on a full-time basis (this is different from mobilisation) while being a member of one of the Reserve Forces, either as an ex-regular or as a volunteer.</p> <p>Each Service uses FTRS personnel differently. The Naval Service predominantly uses FTRS to backfill gapped regular posts. However, they do have a small number of FTRS personnel that are not deployable for operations overseas.</p>
FTRS Regular	FTRS Personnel counted against the Regular Liability
FTRS Non Regular	FTRS Personnel not counted against the Regular Liability
Transfer Trainees	Trained Personnel undergoing further training in an alternative discipline
GS	General Service - Surface Fleet
SM	Submarine - Submarines

FAA	Fleet Air Arm – The Royal Navy’s Aviation branch.
VO	Voluntary Outflow - all voluntarily generated exits from trained personnel
TX	Time Expiry - personnel who leave service at the end of their engagement
OW	Other Wastage - outflow from trained strength due to a number of reasons, including (but not limited to) disciplinary, death, medical
JPA	Joint Personnel Administration: the system used by the Armed Forces to deal with matters of pay, leave and other personnel administrative tasks. JPA replaced the Naval Service IT system in November 2006
QARNNS	Queen Alexandra's Royal Naval Nursing Service - the Nursing branch of the Royal Navy which work alongside the Royal Navy Medical branch
Strength	the number of personnel (for each Service, strength is partially determined by its requirement)
Trained Strength	Comprises military personnel who have completed Phase 1 and Phase 2 training: Phase 1 training includes all new entry training to provide basic military skills Phase 2 training includes initial individual specialisation, sub-specialisation and technical training following Phase 1 training prior to joining the trained strength
Untrained Strength	Comprises military personnel who have yet to complete Phase 2 training

Outflow Tables 9a, 9b, 10a, 10b

The outflow tables presented in this report give a true reflection of the number of service personnel who have left the Royal Navy or the Royal Marines from each of the branches .

The corresponding figures at the top of each of the tables show how many personnel have left the Royal Navy or the Royal Marines as a summation of the outflows of all of the branches.

The very top line of each table shows the sum of the exits from the Royal Navy and the Royal Marines. As a result, this total figure includes the number of people who have transferred between the Royal Navy and Royal Marines.

The UK Armed Forces Monthly Personnel Statistics, produced by Defence Statistics (Tri Service) reports on the total number of outflows from each of the three services (Royal Navy and Royal Marines are reported together as a single service) in tables 5c and 5d. Since the Tri Service report does not include transfers between the Royal Navy and Royal Marines, the figures reported will differ between the two publications, with the UK Armed Forces Monthly Personnel Statistics indicating a lower number of outflows.

Background Information

Revisions

Corrections to the published statistics will be made if errors are found, or if figures change as a result of improvements to methodology or changes to definitions. When making corrections, we will follow the Ministry of Defence [Statistics Revisions and Corrections Policy](#). All corrected figures will be identified by the symbol “r”, and an explanation will be given of the reason for and size of the revision. Corrections which would have a significant impact on the utility of the statistics will be corrected as soon as possible, by reissuing the publication. Minor errors will also be corrected, but for convenience these corrections may be timed to coincide with the next release of the publication.

Marked figures in table 1a have been revised to represent Defence Planning Liability 2016, which was in use from April 2016 and is therefore the appropriate liability against which to measure 1 April 2016 strength. This is consistent with the [UK Armed Forces Monthly Service Personnel Statistics](#).

Data Sources

Royal Navy/ Royal Marines statistics prior to March 2006 are compiled from pay records held by the Service Personnel and Veterans Agency (SPVA, formerly the Armed Forces Personnel Administration Agency). In March 2006 the transfer of all Regular Service personnel records to the Joint Personnel Administration (JPA) system began. Statistics are compiled from JPA for the Royal Navy/ Royal Marines from November 2006.

Rounding Policy

All totals are rounded as a means of disclosure control and to improve the clarity of outputs, therefore totals may not equal the sum of their parts. All numbers are rounded to the nearest 10 with numbers ending in 5 rounded to the nearest multiple of 20 to avoid bias. Numbers that would be rounded to 0 are represented by ‘~’.

Liability

Liability is also known as requirement. The liability used in this publication is taken from the Planning Liability PL 2-16, scaled to Defence Planning Liability 2016.

Feedback

At Defence Statistics we welcome feedback on our statistical products, if you have any comments or questions about this publication or about the statistics produced by Defence Statistics in general, please contact us as follows:

Contact: **Defence Statistics**

Email: DefStrat-Stat-Navy@mod.uk

Visit our website: www.gov.uk/organisations/ministry-of-defence/about/statistics

Royal Navy and Royal Marines Trained Strengths and Liability

	Apr-12	Apr-13	Apr-14	Apr-15
RN/RM Regulars	33,190	31,280	30,310	29,800
FTRS "Regulars" *	100	150	200	250
FTRS "Non-Regulars" *	260	250	300	350

Apr-16	May-16	Jun-16	Jul-16	Aug-16	Sep-16	Oct-16
29,400	29,360	29,270	29,340	29,360	29,200	29,200
310	300	310	310	320	320	310
380	400	400	410	410	420	430

Total	<i>RN/RM Strength</i>	33,290	31,420	30,510	30,060
	Royal Navy	25,970	24,430	23,260	22,790
	Royal Marines	7,220	6,850	7,050	7,020
	FTRS "Regulars" *	100	150	200	250
	Liability	34,800	30,530	30,340	30,280
	Regular Surplus/Deficit	-1,610	750	-40	-480
	Regular Surplus/Deficit (%)	-4.6%	2.4%	-0.1%	-1.6%
	Total Surplus/Deficit	-1,510	890	160	-230
	Total Surplus/Deficit (%)	-4.3%	2.9%	0.5%	-0.7%

29,700	29,650	29,580	29,650	29,680	29,520	29,520
22,510	22,480	22,430	22,490	22,510	22,390	22,400
6,880	6,870	6,840	6,850	6,850	6,810	6,800
310	300	310	310	320	320	310
30100 ^r	30,110	30,120	30,120	30,130	30,140	30,150
-700	-750	-850	-780	-770	-940	-950
-2.3%	-2.5%	-2.8%	-2.6%	-2.6%	-3.1%	-3.1%
-400	-450	-540	-480	-450	-620	-640
-1.3%	-1.5%	-1.8%	-1.6%	-1.5%	-2.1%	-2.1%

Officers	6,410	6,240	6,100	6,000
Royal Navy	5,560	5,400	5,250	5,150
Royal Marines General Service	780	750	750	750
Royal Marines Band Service	10	10	10	10
Transfer Trainees	20	10	10	10
FTRS "Regulars" *	40	60	80	80
Liability	6,500	5,810	5,850	5,950
Surplus/Deficit	-90	420	240	60
Surplus/Deficit (%)	-1.4%	7.3%	4.1%	1.0%

5,920	5,920	5,940	5,950	5,920	5,890	5,900
5,040	5,050	5,070	5,080	5,060	5,030	5,050
750	750	740	740	730	730	720
10	10	10	10	10	10	10
10	10	10	10	10	10	10
100	100	100	100	100	100	100
5940 ^r	5,940	5,940	5,940	5,870	5,870	5,870
-20	-20	~	10	50	30	40
-0.3%	-0.3%	0.0%	0.1%	0.9%	0.4%	0.6%

Ratings	26,880	25,190	24,410	24,050
Warfare (General Service)	5,140	4,720	4,480	4,450
Warfare (Submarine)	830	790	760	780
Warfare (Air)	790	730	690	690
Engineering (General Service)	4,490	4,100	3,740	3,540
Engineering (Submarine)	2,130	2,060	1,970	1,920
Engineering (Air)	3,260	3,110	3,030	2,970
Logistics	2,880	2,680	2,630	2,560
Medical	950	920	900	890
Royal Marines General Service	5,960	5,630	5,720	5,700
Royal Marines Band Service	340	340	340	340
FTRS "Regulars" *	60	90	120	170
Unknown	-	-	-	-
Transfer Trainees	50	30	30	40
Liability	28,300	24,720	24,490	24,340
Surplus/Deficit	-1,420	470	-80	-280
Surplus/Deficit (%)	-5.0%	1.9%	-0.3%	-1.2%

23,780	23,730	23,640	23,700	23,760	23,620	23,610
3,840	3,810	3,800	3,820	3,840	3,820	3,820
570	570	560	570	580	570	560
660	660	660	660	660	660	660
4,230	4,210	4,190	4,210	4,220	4,200	4,230
2,070	2,080	2,070	2,090	2,100	2,090	2,090
2,880	2,860	2,840	2,810	2,810	2,790	2,780
2,480	2,490	2,490	2,480	2,480	2,470	2,470
880	880	880	860	860	850	850
5,590	5,590	5,560	5,570	5,580	5,540	5,530
340	340	340	340	340	340	340
210	200	210	210	220	210	210
-	-	-	-	-	-	-
40	40	40	80	80	80	80
24160 ^r	24,170	24,180	24,180	24,270	24,270	24,280
-380	-440	-540	-480	-500	-650	-670
-1.6%	-1.8%	-2.2%	-2.0%	-2.1%	-2.7%	-2.8%

Oct-16 Edition.

Figures marked with r have been revised to reflect the Planning Liability that was in effect at the time. See Background Information for reference.

From Jan 10 and elsewhere in this document, liability split by Officer/Rating, Branch & Spec is taken from the relevant Planning Liability (currently PL 2-16) scaled to DP16. Monthly liability figures are calculated using a straight line interpolation between the relevant April points (currently April 2016 and April 2017).

* In this table only, the FTRS Strength has been split into those that are counted against the Regular liability (FTRS "Regulars"), and those that are not (FTRS "Non-Regulars").

1b

Summary of Royal Navy and Royal Marines Strength by Service and Arm

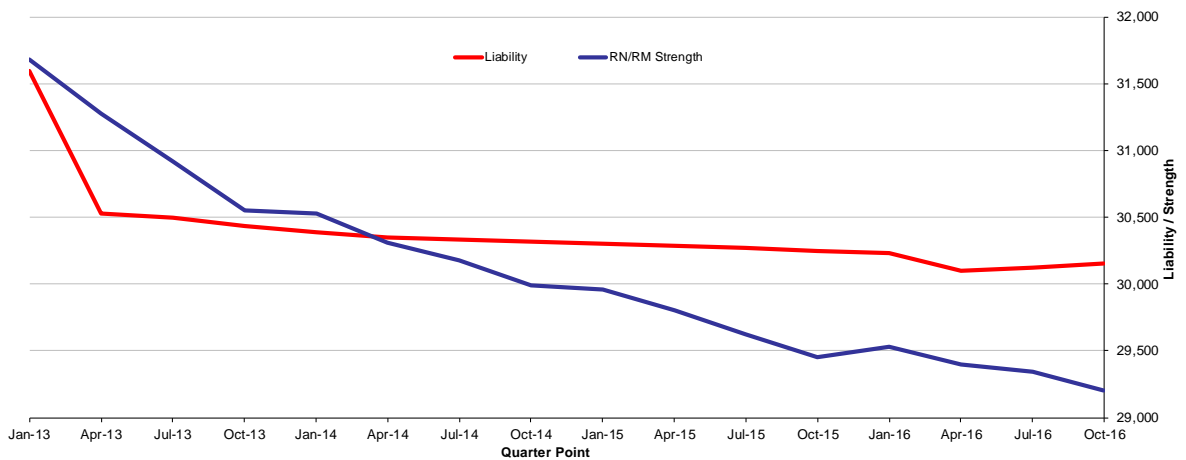
Total	29,520
Royal Navy	22,660
Royal Marines	6,850

	Officers Ratings	
Total	5,900	23,610
Royal Navy	5,160	17,500
Royal Marines	750	6,100

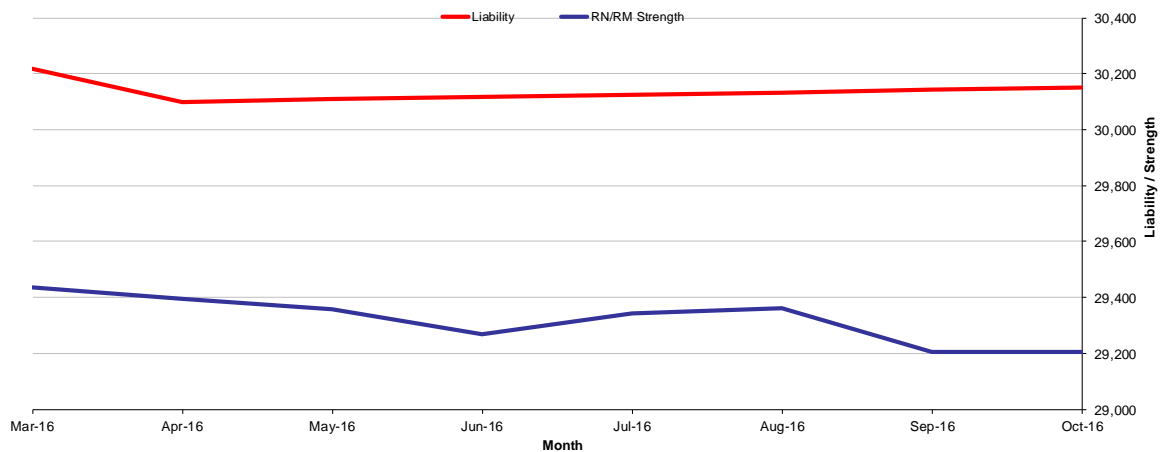
	GS	SM	FAA
Total	20,800	4,060	4,660
Royal Navy	14,020	4,060	4,580
Royal Marines	6,780	-	80

The strength shown is the total trained Regular and FTRS Regular Personnel
RN/RM figures are the Royal Navy and Royal Marines combined

1c Historic Trained Regular Royal Navy and Royal Marines Strengths and Liability by Quarter



1d Recent Trained Regular Royal Navy and Royal Marines Strengths and Liability by Month



Oct-16 Edition.

2a

Trained Regular Royal Navy and Royal Marine Officer Strengths* and Liability** by Branch, Specialisation and Arm

Branch	Specialisation	GS	SM	FAA	Total	Liability	Surplus/Deficit
Total		3,790	840	1,150	5,790	5,870	-80
Warfare		1,350	300	880	2,540	2,600	-70
	Air Traffic Control	-	-	70	70		
	Aviation	-	-	40	40		
	Communications	20	-	-	20		
	Intelligence Officer	130	-	-	130		
	Fighter Controller	30	-	-	30		
	General Service Warfare	320	-	-	320		
	Hydrographic/Meteorological	170	-	-	170		
	Mine Clearance Diver	70	-	-	70		
	Mine Warfare	20	-	-	20		
	Observer	-	-	310	310		
	Pilot	-	-	430	430		
	RM Pilot	-	-	40	40		
	Principal Warfare Officer (PWO)	210	-	-	210		
	PWO (Above Water)	150	-	-	150		
	PWO (Communications)	60	-	-	60		
	PWO (Navigation)	70	-	-	70		
	PWO (Under Water)	80	-	-	80		
	Royal Navy Police	20	-	-	20		
	Submariner	-	300	-	300		
	Unspecified	-	-	-	-		
Engineer		820	440	270	1,540	1,600	-60
	Air Engineer	-	-	270	270		
	Engineer (Information Systems)	40	-	-	40		
	Engineer (Info Systems Submarines)	-	~	-	~		
	Engineer (Training Manager)	200	-	-	200		
	Eng (Training Manager Submarines)	-	20	-	20		
	Marine Engineer	240	-	-	240		
	Marine Engineer (Submarines)	-	230	-	230		
	Weapons Engineer	340	-	-	340		
	Weapons Engineer (Submarines)	-	190	-	190		
	Unspecified	-	-	-	-		
Logistics		410	100	-	510	480	40
	Barrister	40	~	-	40		
	Chartered Management Accountant	20	~	-	20		
	Logistics	360	90	-	450		
	Logistics Family Services	~	-	-	~		
Medical		440	-	-	440	430	10
	Medical Officer	260	-	-	260		
	Medical Services	60	-	-	60		
	Dental Services	40	-	-	40		
	QARNNS	80	-	-	80		
Chaplain		60	-	-	60	60	~
Royal Marines		700	-	-	700	700	10
	Band Service	10	-	-	10		
	General Service	690	-	-	690		

* The Trained Strength shown in this table does not include the Transfer Trainee Strength, hence the slightly lower figures.

** Smoothed Planning Liability 2-16 has been used and scaled to the interpolated monthly DP16 total figure.

Oct-16 Edition.

2b

Trained Regular Royal Navy and Royal Marines Rating Strengths* and Liability** by Branch, Specialisation and Arm

Branch	Specialisation	GS	SM	FAA	Total	Liability	Surplus/Deficit
Total		16,740	3,140	3,450	23,320	24,280	-960
Warfare (General Service)		3,800	-	20	3,820	3,970	-150
	Warfare Specialist (WS)	~	-	-	~		
	WS (Above Water Tactical)	550	-	-	550		
	WS (Above Water Warfare)	430	-	-	430		
	WS (Under Water)	250	-	-	250		
	WS (Electronic Warfare)	350	-	-	350		
	Hydrographic/Meteorological (H/M)	-	-	-	-		
	H/M (Hydrographic)	110	-	-	110		
	H/M (Meteorological)	90	-	20	100		
	Mine Warfare	340	-	-	340		
	Diver	370	-	-	370		
	Seaman Specialist	640	-	-	640		
	Naval Airman (Photographer)	40	-	~	40		
	Physical Training Instructor	190	-	-	190		
	Royal Navy Police	220	-	-	220		
	Communications Technician	210	-	-	210		
Warfare (Submarine)		-	560	-	560	610	-40
	Coxswain (Submarines)	-	30	-	30		
	Warfare Spec (Sensors Submarines)	-	300	-	300		
	Warfare Spec (Tactical Submarines)	-	230	-	230		
Warfare (Air)		-	-	660	660	690	-30
	Aircrewman	-	-	80	80		
	Naval Airman (Aircraft Control)	-	-	110	110		
	Naval Airman (Aircraft Handler)	-	-	430	430		
	Royal Marines Aircrewman	-	-	40	40		
Engineer General Service		4,230	-	-	4,230	4,670	-440
	Marine Engineer Mechanic	100	-	-	100		
	Weapon Engineer Mechanic	30	-	-	30		
	Eng Technician (Marine Engineers)	2,010	-	-	2,010		
	Eng Technician (Weapon Engineers)	2,100	-	-	2,100		
Engineer Submariner		-	2,090	-	2,090	2,240	-150
	Eng Tech (Marine Eng Submarines)	-	1,080	-	1,080		
	Eng Tech (Weapon Eng Submarines)	-	980	-	980		
	Marine Engineer Mechanic	-	20	-	20		
	Weapon Engineer Mechanic	-	-	-	-		
Air Engineer		-	-	2,780	2,780	2,820	-50
	Air Engineer Artificer	-	-	40	40		
	Air Engineer Mechanic	-	-	60	60		
	Air Engineer Technician	-	-	2,540	2,540		
	Naval Airman (Survival Equipment)	-	-	140	140		
Logistics		2,070	390	-	2,470	2,620	-150
	Caterer	20	-	-	20		
	Chef	540	150	-	690		
	Family Service	30	-	-	30		
	Steward	290	70	-	360		
	Supply Chain	490	100	-	580		
	Writer	620	80	-	700		
	Royal Marines Chef	80	-	-	80		
Medical		760	90	-	850	940	-90
	Dental Hygienist	10	-	-	10		
	Dental Surgery Assistant	70	-	-	70		
	Medical Assistant	410	90	-	500		
	Medical Technician	60	-	-	60		
	Naval Nurse	150	-	-	150		
	Royal Marines Medical Assistant	60	-	-	60		
Royal Marines (excl Chefs, Med Asst & Aircrewmen)		5,880	-	-	5,880	5,730	140
	Band Service	280	-	-	280		
	Bugler	70	-	-	70		
	General Service	5,530	-	-	5,530		

* The Trained Strength shown in this table does not include the Transfer Trainee Strength, hence the slightly lower figures.

** Smoothed Planning Liability 2-16 has been used and scaled to the interpolated monthly DP16 total figure.

Oct-16 Edition.

**2c Royal Navy and Royal Marines FTRS Officer
(Regular and Non-Regular) Strengths by Branch,
Specialisation and Arm**

Branch	Specialisation	GS	SM	FAA	Total
Total		170	20	30	210
Warfare		60	10	30	90
	Air Traffic Control	-	-	~	~
	Aviation	-	-	10	10
	Communications	~	-	-	~
	Intelligence Officer	-	-	-	-
	Fighter Controller	-	-	-	-
	General Service Warfare	10	-	-	10
	Hydrographic/Meteorological	~	-	-	~
	Mine Clearance Diver	~	-	-	~
	Mine Warfare	10	-	-	10
	Observer	-	-	10	10
	Pilot	-	-	10	10
	RM Pilot	-	-	-	-
	Principal Warfare Officer (PWO)	~	-	-	~
	PWO (Above Water)	10	-	-	10
	PWO (Communications)	~	-	-	~
	PWO (Navigation)	-	-	-	-
	PWO (Under Water)	10	-	-	10
	Royal Navy Police	-	-	-	-
	Submariner	-	10	-	10
	Unspecified	-	~	-	~
Engineer		20	~	~	20
	Air Engineer	-	-	~	~
	Engineer (Information Systems)	~	-	-	~
	Engineer (Info Systems Submarines)	-	-	-	-
	Engineer (Training Manager)	10	-	-	10
	Eng (Training Manager Submarines)	-	~	-	~
	Marine Engineer	~	-	-	~
	Marine Engineer (Submarines)	-	~	-	~
	Weapons Engineer	~	-	-	~
	Weapons Engineer (Submarines)	-	~	-	~
	Unspecified	-	-	-	-
Logistics		20	-	-	20
	Barrister	-	-	-	-
	Chartered Management Accountant	-	-	-	-
	Logistics	20	-	-	20
	Logistics Family Services	-	-	-	-
Medical		~	-	-	~
	Medical Officer	~	-	-	~
	Medical Services	~	-	-	~
	Dental Services	-	-	-	-
	QARNNS	~	-	-	~
Chaplain		~	-	-	~
Careers		~	-	-	~
Royal Marines		10	-	-	10
	Band Service	-	-	-	-
	General Service	10	-	-	10
Royal Navy Reserves		60	-	-	60
Royal Marines Reserves		-	-	-	-

Royal Navy and Royal Marines FTRS Rating (Regular and Non-Regular) Strengths by Branch, Specialisation and Arm

Branch	Specialisation	GS	SM	FAA	Total
Total		450	70	10	530
Warfare (General Service)		100	-	~	100
	Warfare Specialist (WS)	-	-	-	-
	WS (Above Water Tactical)	10	-	-	10
	WS (Above Water Warfare)	20	-	-	20
	WS (Under Water)	~	-	-	~
	WS (Electronic Warfare)	~	-	-	~
	Hydrographic/Meteorological (H/M)	~	-	-	~
	H/M (Hydrographic)	-	-	-	-
	H/M (Meteorological)	~	-	~	~
	Mine Warfare	-	-	-	-
	Diver	10	-	-	10
	Seaman Specialist	20	-	-	20
	Weapons Analyst	~	-	-	~
	Naval Airman (Photographer)	10	-	-	10
	Physical Training Instructor	10	-	-	10
	Royal Navy Police	10	-	-	10
	Communications Technician	~	-	-	~
	Unspecified	-	-	-	-
Warfare (Submarine)		-	10	-	10
	Coxswain (Submarines)	-	~	-	~
	Warfare Specialist (Sensors Sub)	-	~	-	~
	Warfare Specialist (Tactical Sub)	-	~	-	~
Warfare (Air)		-	-	~	~
	Aircrewman	-	-	~	~
	Naval Airman (Aircraft Control)	-	-	~	~
	Naval Airman (Aircraft Handler)	-	-	~	~
	RM Aircrewman	-	-	-	-
	Unspecified	-	-	-	-
Engineer General Service		70	-	-	70
	Marine Engineer Mechanic	10	-	-	10
	Weapon Engineer Mechanic	10	-	-	10
	Eng Technician (Marine Engineer)	20	-	-	20
	Eng Technician (Weapon Engineer)	30	-	-	30
	Unspecified	-	-	-	-
Engineer Submariner		-	60	-	60
	Eng Technician (Marine Eng Sub)	-	30	-	30
	Eng Technician (Weapon Eng Sub)	-	20	-	20
	Marine Engineer Mechanic	-	~	-	~
	Weapon Engineer Mechanic	-	~	-	~
Air Engineer		-	-	10	10
	Air Engineer Artificer	-	-	~	~
	Air Engineer Mechanic	-	-	-	-
	Air Engineer Technician	-	-	~	~
	Naval Airman (Survival Equipment)	-	-	~	~
Logistics		40	~	-	40
	Caterer	10	~	-	10
	Chef	~	~	-	~
	Family Service	-	-	-	-
	Steward	~	-	-	~
	Supply Chain	20	~	-	20
	Writer	10	-	-	10
	Unspecified	-	-	-	-
Medical		~	~	-	~
	Dental Hygienist	-	-	-	-
	Dental Surgery Assistant	-	-	-	-
	Medical Assistant	~	~	-	~
	Medical Technician	-	-	-	-
	RM Medical Assistant	-	-	-	-
	Naval Nurse	~	-	-	~
	Unspecified	-	-	-	-
Royal Marines (excl Chefs, Med Asst & Aircrewmen)		60	-	-	60
	Band Service	~	-	-	~
	Bugler	-	-	-	-
	General Service	60	-	-	60
Royal Navy Reserves		10	-	-	10
Royal Marines Reserves		-	-	-	-
Careers		180	-	-	180

Trained* Regular Royal Navy and Royal Marine Officer Strengths and Liability
by Branch and Paid Rank*****

Branch		OF7 and above	OF-6	OF-5	OF-4	OF-3	OF-2	OF-1	Total
Total	Strength	40	80	270	1,040	1,930	2,100	320	5,790
	Liability	30	80	260	1,000	1,950	2,550	-	5,870
	Surplus / Deficit	~	~	10	40	-10	-450	320	-80
Warfare	Strength	20	30	100	380	890	990	130	2,540
	Liability	20	40	100	370	880	1,200	-	2,600
	Surplus / Deficit	~	~	~	10	10	-210	130	-70
	% Surplus / Deficit	1.1%	-6.8%	-0.6%	3.4%	0.7%	-17.7%	-	-2.7%
Engineer	Strength	10	20	90	280	520	580	50	1,540
	Liability	10	20	80	250	550	680	-	1,600
	Surplus / Deficit	~	~	10	20	-30	-110	50	-60
	% Surplus / Deficit	-28.5%	2.6%	6.6%	8.7%	-5.2%	-15.8%	-	-4.0%
Logistics	Strength	~	10	20	90	160	180	40	510
	Liability	-	10	20	90	160	200	-	480
	Surplus / Deficit	~	~	10	10	~	-20	40	40
	% Surplus / Deficit	-	36.6%	28.3%	6.3%	0.5%	-10.2%	-	7.6%
Medical	Strength	~	~	30	120	160	120	10	440
	Liability	-	~	20	130	140	140	-	430
	Surplus / Deficit	~	~	~	-10	20	-20	10	10
	% Surplus / Deficit	-	35.3%	16.2%	-6.3%	13.7%	-12.8%	-	3.0%
Chaplain	Strength	~	~	-	60	-	-	-	60
	Liability	~	-	~	50	-	-	-	60
	Surplus / Deficit	~	~	~	~	-	-	-	~
	% Surplus / Deficit	1.5%	-	-100.0%	2.3%	-	-	-	2.3%
Royal Marines General Service	Strength	~	10	30	120	200	230	90	690
	Liability	~	10	30	110	210	320	-	690
	Surplus / Deficit	see note 1	~	~	10	-10	-90	90	~
	% Surplus / Deficit	see note 1	8.8%	2.4%	6.3%	-6.0%	-27.9%	-	0.3%
Royal Marines Band Service	Strength	-	-	-	~	~	10	~	10
	Liability	-	-	-	~	~	~	-	10
	Surplus / Deficit	-	-	-	~	~	~	~	~
	% Surplus / Deficit	-	-	-	3.9%	31.5%	26.0%	-	47.0%
Careers/Other	Strength	-	-	-	-	-	-	-	-
	Liability	-	-	-	-	-	-	-	-
	Surplus / Deficit	-	-	-	-	-	-	-	-
	% Surplus / Deficit	-	-	-	-	-	-	-	-
Unspecified	Strength	-	-	-	-	-	-	-	-
	Liability	-	-	-	-	-	-	-	-

Oct-16 Edition.

* The Trained Strength shown in this table does not include the Transfer Trainee Strength, hence the slightly lower figures.

** Smoothed Planning Liability 2-16 has been used and scaled to the interpolated monthly DP16 total figure.

*** Figures exclude FTRS personnel in regular posts.

¹ At OF7+ RM GS Officers are assigned under the same regime as their RN counterparts, occupying common appointments where liability is attributable across the RN/RM OF7+ population.

Trained* Regular Royal Navy and Royal Marines Rating Strengths and Liability
by Branch and Paid Rank*****

Branch		OR-9	OR-8 ³	OR-7	OR-6	OR-4	OR-3	OR-2	Total
Total	Strength	950	410	2,790	3,740	5,450	750	9,240	23,320
	Liability	890	220	2,880	4,470	6,180	see note 2	9,630	24,280
	Surplus / Deficit	50	190	-90	-740	-730	750	-380	-960
Warfare (General Service)	Strength	150	~	480	690	970	-	1,530	3,820
	Liability	140	-	490	800	1,150	-	1,390	3,970
	Surplus / Deficit	10	~	-20	-110	-180	-	140	-150
	% Surplus / Deficit	8.8%	-	-3.1%	-13.6%	-15.9%	-	10.4%	-3.8%
Warfare (Submarine)	Strength	30	-	80	70	120	-	260	560
	Liability	30	-	80	90	130	-	280	610
	Surplus / Deficit	~	-	~	-10	-10	-	-10	-40
	% Surplus / Deficit	8.7%	-	-3.6%	-16.3%	-10.8%	-	-4.3%	-6.8%
Warfare (Air)	Strength	20	-	80	140	160	-	270	660
	Liability	30	-	80	160	220	-	210	690
	Surplus / Deficit	~	-	-10	-20	-60	-	60	-30
	% Surplus / Deficit	-6.0%	-	-7.7%	-13.1%	-28.0%	-	29.2%	-4.2%
Engineering (General Service)	Strength	340	20	700	720	960	-	1,500	4,230
	Liability	300	-	730	990	1,130	-	1,520	4,670
	Surplus / Deficit	30	20	-30	-260	-170	-	-20	-440
	% Surplus / Deficit	10.2%	-	-4.4%	-26.7%	-15.3%	-	-1.3%	-9.4%
Engineering (Submarine)	Strength	120	150	280	300	490	-	740	2,090
	Liability	140	-	340	550	550	-	660	2,240
	Surplus / Deficit	-20	150	-60	-260	-50	-	90	-150
	% Surplus / Deficit	-16.7%	-	-17.9%	-46.4%	-9.9%	-	13.4%	-6.9%
Engineering (Air)	Strength	100	10	420	620	700	-	940	2,780
	Liability	90	-	430	610	740	-	950	2,820
	Surplus / Deficit	10	10	-10	10	-50	-	-20	-50
	% Surplus / Deficit	10.4%	-	-2.4%	1.4%	-6.2%	-	-1.7%	-1.7%
Logistics	Strength	60	~	240	410	720	10	1,020	2,470
	Liability	60	-	220	430	800	-	1,110	2,620
	Surplus / Deficit	~	~	10	-20	-70	10	-90	-150
	% Surplus / Deficit	4.1%	-	6.4%	-3.9%	-9.2%	-	-7.7%	-5.8%
Medical	Strength	30	-	120	160	260	~	280	850
	Liability	30	-	120	200	310	-	280	940
	Surplus / Deficit	~	-	~	-30	-50	~	~	-90
	% Surplus / Deficit	-14.2%	-	1.3%	-17.8%	-16.8%	-	0.2%	-9.4%
Royal Marines General Service Excludes RM Med Assistant, RM Aircrewman, RM Band, RM Careers Service and RM Chefs									
	Strength	90	220	370	570	1,030	730	2,520	5,530
	Liability	70	210	350	600	1,100	see note 2	3,070	5,400
	Surplus / Deficit	20	10	10	-30	-70	730	-540	130
	% Surplus / Deficit	29.3%	3.9%	3.5%	-4.6%	-6.5%	-	-17.7%	2.4%
Royal Marines Band Service									
	Strength	10	10	40	50	50	10	180	340
	Liability	~	10	20	50	60	-	180	330
	Surplus / Deficit	~	~	10	~	~	10	~	20
	% Surplus / Deficit	50.6%	16.4%	44.3%	-1.9%	-7.5%	-	-1.5%	4.8%
Unspecified	Strength	-	-	-	-	-	-	-	-
	Liability	-	-	-	-	-	-	-	-
CAPPS	Strength	-	-	-	-	-	-	-	-
	Liability	-	-	-	-	-	-	-	-

Oct-16 Edition.

* The Trained Strength shown in this table does not include the Transfer Trainee Strength, hence the slightly lower figures.

** Smoothed Planning Liability 2-16 has been used and scaled to the interpolated monthly DP16 total figure.

*** Figures exclude FTRS personnel in regular posts.

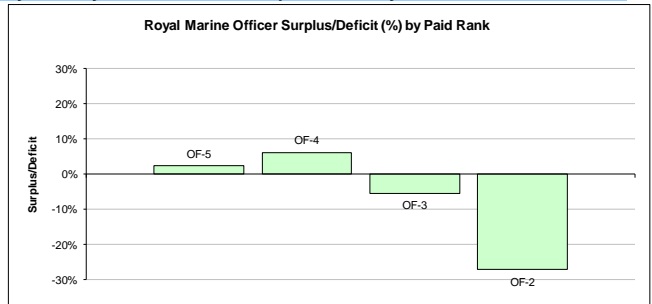
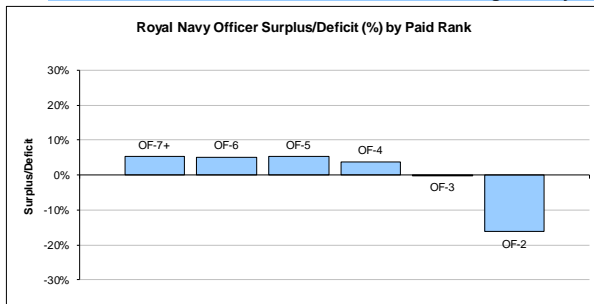
² Royal Marines are the only part of the RN/RM Service to currently contain OR3 strength.

As no separate liability for OR3 is produced for the RN/RM, the liability for OR2 also includes OR3.

³ The latest liability (PL2-16) no longer includes RN OR8. This rank will still be reflected in RN strength.

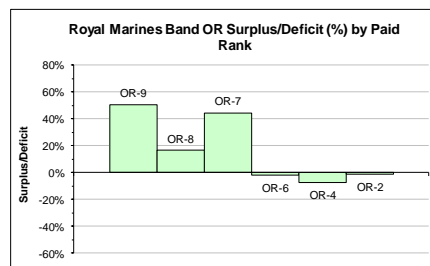
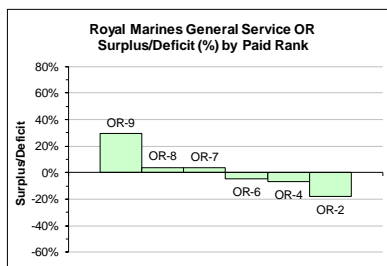
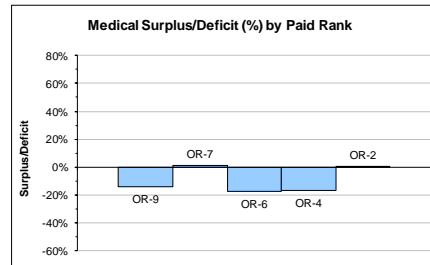
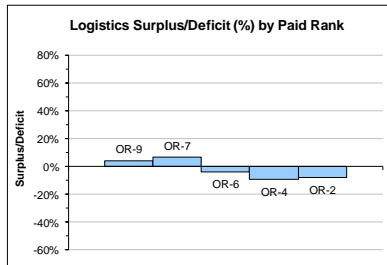
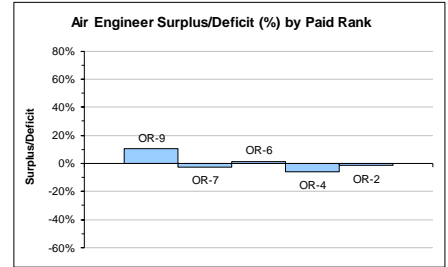
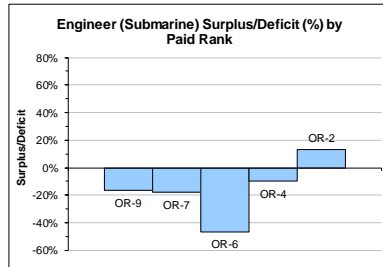
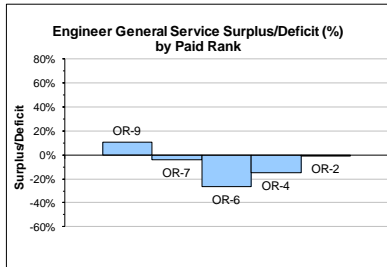
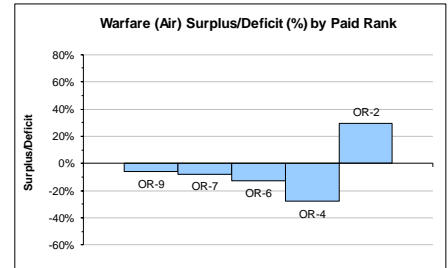
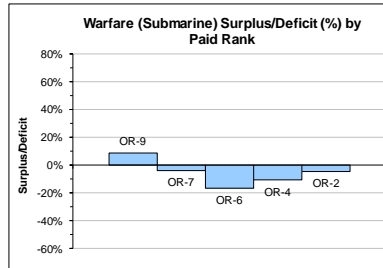
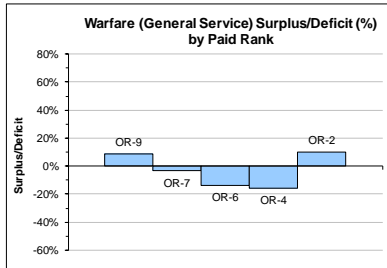
3c

Trained Regular Royal Navy and Royal Marine Officer Surplus/Deficit by Paid Rank



3d

Trained Regular Royal Navy and Royal Marine Rating Surplus/Deficit by Paid Rank



3e Royal Navy and Royal Marine Officer FTRS (Regular and Non-Regular) Strength by Branch and Paid Rank								
Branch	OF7+	OF6	OF5	OF4	OF3	OF2	OF1	Total
Total	-	~	10	50	100	40	-	210
Warfare	-	-	~	30	50	10	-	90
Engineer	-	-	~	~	10	10	-	20
Logistics	-	~	~	~	10	-	-	20
Medical	-	-	-	-	~	~	-	~
Chaplain	-	-	-	~	-	-	-	~
Royal Marines General Service	-	-	~	~	10	~	-	10
Royal Marines Band Service	-	-	-	-	-	-	-	-
Royal Navy Reserves	-	~	-	10	30	20	-	60
Royal Marines Reserves	-	-	-	-	-	-	-	-
Careers/Other	-	-	-	-	-	~	-	~

Oct-16 Edition.

3f Royal Navy and Royal Marine Rating FTRS (Regular and Non-Regular) Strength by Branch and Paid Rank								
Branch	OR9	OR8	OR7	OR6	OR4	OR3	OR2	Total
Total	70	10	210	190	40	~	10	530
Warfare (General Service)	20	-	40	30	10	-	~	100
Warfare (Submarine)	~	-	~	~	~	-	-	10
Warfare (Air)	-	-	~	~	-	-	-	~
Engineering (General Service)	10	~	40	10	10	-	~	70
Engineering (Submarine)	~	~	30	10	~	-	-	60
Engineering (Air)	~	-	~	~	~	-	-	10
Logistics	~	-	20	10	~	-	~	40
Medical	~	-	~	~	-	-	-	~
Royal Marines General Service	~	~	20	20	10	~	10	60
<i>Excludes RM Med Assistant, RM Aircrewman, RM Band and RM Careers Service</i>								
Royal Marines Band Service	-	-	~	-	-	-	-	~
Royal Navy Reserves	~	-	~	-	-	-	-	~
Royal Marines Reserves	-	-	-	-	-	-	-	-
Career	30	~	50	100	-	-	-	180
Unspecified	-	-	-	-	-	-	-	-

Oct-16 Edition.

4a (GS) Trained* Regular Royal Navy and Royal Marine Officer General Service Strengths by Branch and Specialisation and Paid Rank

Branch	Specialisation	OF-7 and above	OF-6	OF-5	OF-4	OF-3	OF-2	OF-1	Total
Total		20	60	180	700	1,270	1,300	280	3,790
Warfare		10	20	50	190	480	500	100	1,350
	Communications	-	-	-	~	10	10	-	20
	Intelligence Officer	-	-	-	10	50	60	10	130
	Fighter Controller	-	-	-	-	~	30	-	30
	General Service Warfare	-	-	-	~	20	220	80	320
	Hydrographic/Meteorological	-	-	~	20	60	80	10	170
	Mine Clearance Diver	-	-	-	~	30	40	-	70
	Mine Warfare	-	-	-	-	~	20	-	20
	Principal Warfare Officer (PWO)	~	-	10	30	150	20	-	210
	PWO (Above Water)	~	10	20	60	60	~	-	150
	PWO (Communications)	~	~	~	20	30	~	-	60
	PWO (Navigation)	~	~	~	20	30	10	-	70
	PWO (Under Water)	~	~	10	30	30	-	-	80
	Royal Navy Police	-	-	-	~	10	10	~	20
	Unspecified	-	-	-	-	-	-	-	-
Engineer		~	10	50	140	290	290	30	820
	Engineer (Information Systems)	-	-	~	10	20	10	-	40
	Engineer (Training Manager)	-	~	10	30	70	80	10	200
	Marine Engineer	~	~	20	50	90	70	10	240
	Weapons Engineer	-	10	20	60	110	130	10	340
	Unspecified	-	-	-	-	-	-	-	-
Logistics		-	10	20	60	130	150	40	410
	Barrister	-	~	~	10	10	~	-	40
	Chartered Management Accountant	-	-	~	10	~	-	-	20
	Logistics	-	~	10	50	110	150	40	360
	Logistics Family Services	-	-	-	-	~	~	-	~
Medical		~	~	30	120	160	120	10	440
	Medical Officer	~	~	20	80	100	60	-	260
	Medical Services	-	-	~	10	20	20	10	60
	Dental Services	-	-	~	20	20	~	-	40
	QARNNS	-	~	~	10	20	30	10	80
Chaplain		~	~	-	60	-	-	-	60
Other		-	-	-	-	-	-	-	-
Royal Marines		~	10	30	120	200	240	100	700
	Band Service	-	-	-	~	~	10	~	10
	General Service	~	10	30	120	200	230	90	690

* The Trained Strength shown in this table does not include the Transfer Trainee Strength, hence the slightly lower figures.

Oct-16 Edition.

4a (SM) Trained* Regular Royal Navy and Royal Marines Officer Submarine Strengths by Branch and Specialisation and Paid Rank

Branch	Specialisation	OF-7 and above	OF-6	OF-5	OF-4	OF-3	OF-2	OF-1	Total
Total		10	20	50	160	250	340	30	840
Warfare		~	10	10	40	80	130	20	300
	Submariner	~	10	10	40	80	130	20	300
Engineer		10	10	30	80	130	180	10	440
	Engineer (Info Systems Submarines)	-	-	-	-	~	~	-	~
	Engineer (Training Mgr Submarines)	-	-	~	10	~	10	-	20
	Marine Engineer (Submarines)	~	~	10	40	70	100	~	230
	Weapons Engineer (Submarines)	~	~	20	30	60	80	10	190
Logistics	Unspecified	-	-	-	-	-	-	-	-
		~	~	~	30	30	30	-	100
	Barrister	-	-	-	~	~	-	-	~
	Chartered Management Accountant	-	-	-	~	~	-	-	~
	Logistics	~	~	~	20	30	30	-	90
Other	Logistics Family Services	-	-	-	-	-	-	-	-
		-	-	-	-	-	-	-	-

* The Trained Strength shown in this table does not include the Transfer Trainee Strength, hence the slightly lower figures.

4a (FAA) Trained* Regular Royal Navy and Royal Marine Officer Fleet Air Arm Strengths by Branch and Specialisation and Paid Rank

Branch	Specialisation	OF-7 and above	OF-6	OF-5	OF-4	OF-3	OF-2	OF-1	Total
Total		10	20	40	190	420	460	20	1,150
Warfare		~	10	30	140	320	360	10	880
	Air Traffic Control	-	-	~	~	20	40	10	70
	Aviation	-	-	-	~	10	20	10	40
	Observer	~	~	10	70	110	110	-	310
	Pilot	~	~	20	60	160	190	-	430
	RM Pilot	-	-	~	10	20	10	-	40
	Unspecified	-	-	-	-	-	-	-	-
Engineer		~	~	10	50	100	100	10	270
	Air Engineer	~	~	10	50	100	100	10	270
Other		-	-	-	-	-	-	-	-

* The Trained Strength shown in this table does not include the Transfer Trainee Strength, hence the slightly lower figures.

Oct-16 Edition.

4b (GS)
**Trained* Regular Rating General Service Strengths
by Branch and Specialisation and Paid Rank**

Branch	Specialisation	OR-9	OR-8	OR-7	OR-6	OR-4	OR-3	OR-2	Total
Total		670	250	1,870	2,520	3,860	750	6,830	16,740
Warfare		140	~	460	690	970	-	1,530	3,800
	Warfare Specialist (WS)	-	-	-	-	-	-	~	~
	WS (Above Water Tactical)	20	-	60	100	110	-	250	550
	WS (Above Water Warfare)	20	-	70	80	100	-	150	430
	WS (Under Water)	10	-	30	50	50	-	100	250
	WS (Electronic Warfare)	10	-	40	60	80	-	150	350
	Hydrographic/Meteorological (H/M)	-	-	-	-	-	-	-	-
	H/M (Hydrographic)	~	-	10	10	30	-	60	110
	H/M (Meteorological)	-	-	~	10	30	-	40	90
	Mine Warfare	10	-	20	60	70	-	180	340
	Diver	20	-	30	50	90	-	180	370
	Seaman Specialist	20	-	40	60	130	-	390	640
	Physical Training Instructor	10	-	20	60	90	-	-	190
	Royal Navy Police	10	-	40	80	90	-	-	220
	Communications Technician	20	~	80	40	60	-	10	210
	Unspecified	-	-	-	-	-	-	-	-
Engineer		340	20	700	720	960	-	1,500	4,230
	Marine Engineer Mechanic	30	-	50	10	-	-	-	100
	Weapon Engineer Mechanic	10	-	20	10	-	-	-	30
	Eng Technician (Marine Engineer)	170	~	260	340	480	-	750	2,010
	Eng Technician (Weapon Engineer)	130	10	370	370	470	-	740	2,100
	Unspecified	-	-	-	-	-	-	-	-
Logistics		60	~	200	340	620	10	840	2,070
	Caterer	20	-	-	-	-	-	-	20
	Steward	-	-	10	30	100	-	160	290
	Chef	~	-	50	80	160	-	240	540
	Writer	20	-	70	110	190	-	240	620
	Supply Chain	20	-	50	80	150	-	190	490
	Family Services	~	-	10	20	-	-	-	30
	Royal Marine Chef	~	~	10	20	20	10	10	80
Medical		30	-	110	140	230	~	260	760
	Dental Hygienist	-	-	~	~	~	-	-	10
	Dental Surgery Assistant	~	-	~	10	30	-	30	70
	Medical Assistant	20	-	50	50	100	-	190	410
	Naval Nurse	~	-	30	40	70	-	~	150
	Royal Marines Medical Assistant	~	-	~	10	10	~	30	60
	Medical Technician	~	-	20	20	10	-	~	60
Other		-	-	-	-	-	-	-	-
Royal Marines		100	230	400	620	1,080	740	2,700	5,880
	Royal Marines Band Service	10	10	40	50	50	10	180	340
	Royal Marines General Service	90	220	370	570	1,030	730	2,520	5,530

* The Trained Strength shown in this table does not include the Transfer Trainee Strength, hence the slightly lower figures.

4b (SM)**Trained* Regular Rating Submarine Strengths
by Branch and Specialisation and Paid Rank**

Branch	Specialisation	OR-9	OR-8	OR-7	OR-6	OR-4	OR-3	OR-2	Total
Total		150	150	410	470	740	-	1,210	3,140
Warfare		30	-	80	70	120	-	260	560
	Coxswain (Submarines)	10	-	20	-	-	-	-	30
	Warfare Spec (Sensors Submarine)	10	-	40	50	70	-	140	300
	Warfare Spec (Tactical Submarine)	10	-	20	20	50	-	130	230
	Unspecified	-	-	-	-	-	-	-	-
Engineer		120	150	280	300	490	-	740	2,090
	Marine Engineer Mechanic	-	-	20	-	-	-	-	20
	Weapon Engineer Mechanic	-	-	-	-	-	-	-	-
	Eng Technician (Marine Engineer)	60	110	140	130	250	-	380	1,080
	Eng Technician (Weapon Engineer)	60	40	120	160	240	-	360	980
	Unspecified	-	-	-	-	-	-	-	-
Logistics		~	-	30	70	100	-	180	390
	Caterer	-	-	-	-	-	-	-	-
	Steward	-	-	~	10	20	-	40	70
	Chef	~	-	20	30	40	-	70	150
	Writer	~	-	10	20	20	-	30	80
	Supply Chain	-	-	10	20	20	-	50	100
	Family Services	-	-	-	-	-	-	-	-
Medical		~	-	10	20	30	-	20	90
	Medical Assistant	~	-	10	20	30	-	20	90
Other		-	-	-	-	-	-	-	-

* The Trained Strength shown in this table does not include the Transfer Trainee Strength, hence the slightly lower figures.

4b (FAA)**Trained* Regular Rating Fleet Air Arm Strengths
by Branch and Specialisation and Paid Rank**

Branch	Specialisation	OR-9	OR-8	OR-7	OR-6	OR-4	OR-3	OR-2	Total
Total		130	10	510	750	850	-	1,200	3,450
Warfare (Air)		20	-	80	140	160	-	270	660
	Aircrewmen	10	-	20	40	20	-	-	80
	Naval Airman (Aircraft Control)	10	-	20	30	40	-	20	110
	Naval Airman (Aircraft Handler)	10	-	30	50	100	-	240	430
	RM Aircrewmen	~	-	10	10	10	-	-	40
	Unspecified	-	-	-	-	-	-	-	-
Warfare (General Service)		~	-	10	-	-	-	~	20
	H/M (Meteorological)	~	-	10	-	-	-	~	20
	Naval Airman (Photographer)	~	-	-	-	-	-	-	~
Engineer		100	10	420	620	700	-	940	2,780
	Air Engineer Artificer	-	-	40	-	-	-	-	40
	Air Engineer Mechanic	10	-	30	20	-	-	~	60
	Air Engineer Technician	90	10	340	570	650	-	890	2,540
	Naval Airman (Survival Equipment)	~	-	20	20	40	-	50	140
Other		-	-	-	-	-	-	-	-

Oct-16 Edition.

* The Trained Strength shown in this table does not include the Transfer Trainee Strength, hence the slightly lower figures.

5a

Untrained Regular Royal Navy and Royal Marines Officer Strengths by Branch and Paid Rank

	OF4+	OF3	OF2	OF1	OFD	Total
Total	-	-	130	530	370	1,020
Warfare	-	-	70	290	190	550
Engineer	-	-	20	150	110	270
Logistics	-	-	-	20	20	40
Medical	-	-	40	40	-	80
Chaplain	-	-	-	-	-	-
No Specialisation	-	-	-	-	-	-
RM General Service	-	-	-	40	50	90
RM Band Service	-	-	-	-	-	-
Careers/Other	-	-	-	-	-	-

Oct-16 Edition.

Note: Midshipmen are counted as OF-D

5b Untrained Regular Royal Navy and Royal Marine Rating Strengths by Branch and Paid Rank					
	OR6+	OR4	OR3	OR2	Total
Total	~	40	-	2,230	2,260
Warfare (General Service)	-	-	-	340	340
Warfare Specialist	-	-	-	~	~
Warfare Specialist (Above Water Tactical)	-	-	-	80	80
Hydrographic/Meteorological	-	-	-	10	10
H/M (Hydrographic)	-	-	-	-	-
H/M (Meteorological)	-	-	-	-	-
Mine Warfare	-	-	-	20	20
Diver	-	-	-	50	50
Seaman Specialist	-	-	-	100	100
Naval Airman (Photographer)	-	-	-	-	-
Communications Technician	-	-	-	40	40
Unspecified	-	-	-	-	-
Warfare (Submarine)	-	-	-	40	40
Warfare Specialist (Sensors Submarine)	-	-	-	20	20
Warfare Specialist (Tactical Submarine)	-	-	-	20	20
Unspecified	-	-	-	-	-
Warfare (Air)	-	-	-	70	70
Aircrewman	-	-	-	30	30
Naval Airman (Aircraft Control)	-	-	-	20	20
Naval Airman (Aircraft Handler)	-	-	-	20	20
Unspecified	-	-	-	-	-
Engineer General Service	~	20	-	460	480
Eng Technician (Marine Engineer)	~	20	-	240	260
Eng Technician (Weapon Engineer)	-	-	-	220	220
Unspecified	-	-	-	-	-
Engineer Submariner	-	20	-	230	250
Eng Technician (Marine Engineer Sub)	-	20	-	120	130
Eng Technician (Weapon Engineer Sub)	-	~	-	110	120
Unspecified	-	-	-	-	-
Air Engineer	-	-	-	360	360
Air Engineer Technician	-	-	-	340	340
Naval Airman (Survival Equipment)	-	-	-	20	20
Unspecified	-	-	-	-	-
Logistics	-	-	-	90	90
Chef	-	-	-	50	50
Steward	-	-	-	~	~
Supply Chain	-	-	-	20	20
Writer	-	-	-	20	20
Unspecified	-	-	-	-	-
Medical	-	-	-	80	80
Dental Surgery Assistant	-	-	-	~	~
Medical Assistant	-	-	-	50	50
Medical Technician	-	-	-	~	~
Naval Nurse	-	-	-	20	20
Unspecified	-	-	-	-	-
Royal Marines General Service	-	-	-	480	480
Royal Marines Band Service	-	-	-	80	80
Band	-	-	-	70	70
Bugler	-	-	-	~	~
Unspecified	-	-	-	-	-
Unknown	-	-	-	-	-

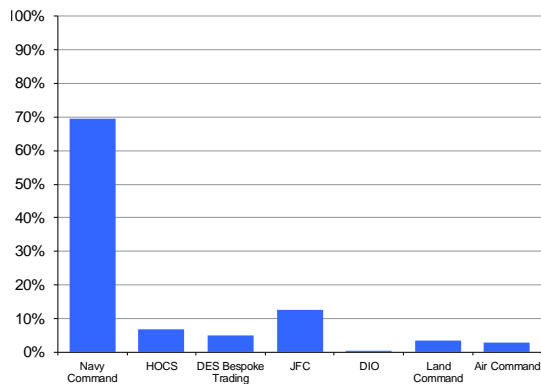
Officers

ILB	OF9	OF8	OF7	OF6	OF5	OF4	OF3	OF2	OF1	Total	% of Total Trained Strength
Total	~	10	30	80	270	1,040	1,930	2,100	320	5,790	100.0%
Navy Command	~	~	10	40	120	560	1,350	1,640	280	4,020	69.3%
HOCS	~	~	10	20	50	160	120	30	-	390	6.8%
DES Bespoke Trading	-	~	~	10	30	80	80	80	~	290	4.9%
JFC	-	~	~	20	60	210	250	180	20	740	12.7%
DIO	-	-	-	-	~	~	~	-	-	~	0.1%
Land Command	-	-	-	-	~	20	70	100	10	200	3.4%
Air Command	-	-	-	-	~	20	50	70	~	160	2.7%

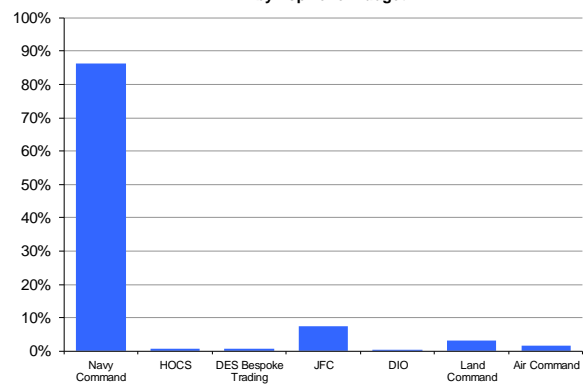
Ratings

ILB	OR9	OR8	OR7	OR6	OR4	OR3	OR2	Total	% of Total Trained Strength
Total	950	410	2,790	3,740	5,450	750	9,240	23,320	100.0%
Navy Command	750	340	2,140	3,080	4,690	600	8,560	20,160	86.4%
HOCS	20	~	60	40	40	-	20	180	0.8%
DES Bespoke Trading	70	10	60	10	~	-	~	160	0.7%
JFC	60	40	290	300	480	130	420	1,730	7.4%
DIO	-	-	-	-	~	-	-	~	0.0%
Land Command	20	~	110	180	160	10	210	720	3.1%
Air Command	20	10	110	120	80	-	30	380	1.6%

Trained* Regular Royal Navy and Royal Marine Officer strength by Top Level Budget



Trained* Regular Royal Navy and Royal Marine Ratings strength by Top Level Budget



* The Trained Strength shown in this table does not include the Transfer Trainee Strength, hence the slightly lower figures.

7a Trained Regular Royal Navy and Royal Marines Length of Service by Rank

Royal Navy Officers

Rank		Average LOS on Promotion	Current Average LOS	Average LOS on Exit			
				Overall	VO	TX	OW
OF7+	Admiral	33.7	34.1	35.9	N/A	35.9	N/A
OF6	Commodore	29.4	31.2	32.6	30.3	37.2	N/A
OF5	Captain	26.6	29.4	33.6	31.5	36.1	32.3
OF4	Commander	18.4	23.1	27.0	24.6	30.3	27.6
OF3	Lt Commander	13.4	17.1	19.1	19.5	19.0	15.0
OF2	Lieutenant	13.2	11.2	12.4	12.1	15.5	10.6
OF1	Sub-Lieutenant	9.0	5.6	4.2	N/A	N/A	4.2
OFD	Midshipman	N/A	N/A	N/A	N/A	N/A	N/A
Overall		16.0	16.4	20.6	19.2	25.6	12.5

Royal Marine Officers

Rank		Average LOS on Promotion	Current Average LOS	Average LOS on Exit			
				Overall	VO	TX	OW
OF7+	Major General and Above	31.1	32.0	34.7	N/A	34.7	N/A
OF6	Brigadier	28.5	30.4	31.3	31.6	36.5	25.9
OF5	Colonel	21.3	26.3	32.2	32.2	N/A	N/A
OF4	Lt Colonel	16.5	21.5	24.4	24.4	36.1	18.6
OF3	Major	15.9	16.1	17.7	16.3	17.9	20.9
OF2	Captain	18.8	11.4	13.9	10.5	21.6	9.7
OF1	Lieutenant	N/A	7.6	N/A	N/A	N/A	N/A
Overall		18.3	15.1	18.9	17.2	22.9	16.7

Royal Navy Ratings

Rank		Average LOS on Promotion	Current Average LOS	Average LOS on Exit				
				Overall	VO	TX	OW	PTO
OR-9	Warrant Officer 1st Class	25.1	28.8	30.9	30.1	32.2	25.8	N/A
OR-8	Warrant Officer 2nd Class	17.0	23.4	26.7	24.8	30.5	25.7	21.0
OR-7	Chief Petty Officer	18.6	21.3	23.5	23.0	26.8	21.7	14.8
OR-6	Petty Officer	12.4	15.7	18.9	18.4	24.3	16.1	13.3
OR-4	Leading Hand	7.0	10.0	11.6	10.1	19.4	12.7	8.9
OR-2	Able Rating	N/A	4.2	6.3	6.5	7.1	5.9	3.8
Overall		12.3	11.4	12.1	11.0	24.0	8.8	11.2

Royal Marine Ratings

Rank		Average LOS on Promotion	Current Average LOS	Average LOS on Exit				
				Overall	VO	TX	OW	PTO
OR-9	Warrant Officer 1st Class	24.5	27.7	29.4	N/A	30.4	24.3	25.3
OR-8	Warrant Officer 2nd Class	19.7	24.2	27.1	26.2	27.4	30.0	22.6
OR-7	Colour Sergeant	17.3	20.5	21.6	25.2	22.5	21.4	15.8
OR-6	Sergeant	12.4	15.3	16.2	14.0	24.5	14.6	14.0
OR-4	Corporal	8.6	10.9	12.5	11.2	20.2	11.8	N/A
OR-3	Lance Corporal	8.4	6.4	N/A	N/A	N/A	N/A	N/A
OR-2	Marine	N/A	4.9	7.1	6.8	14.8	7.4	3.2
Overall		12.6	9.6	10.5	8.4	23.6	9.2	13.3

Notes

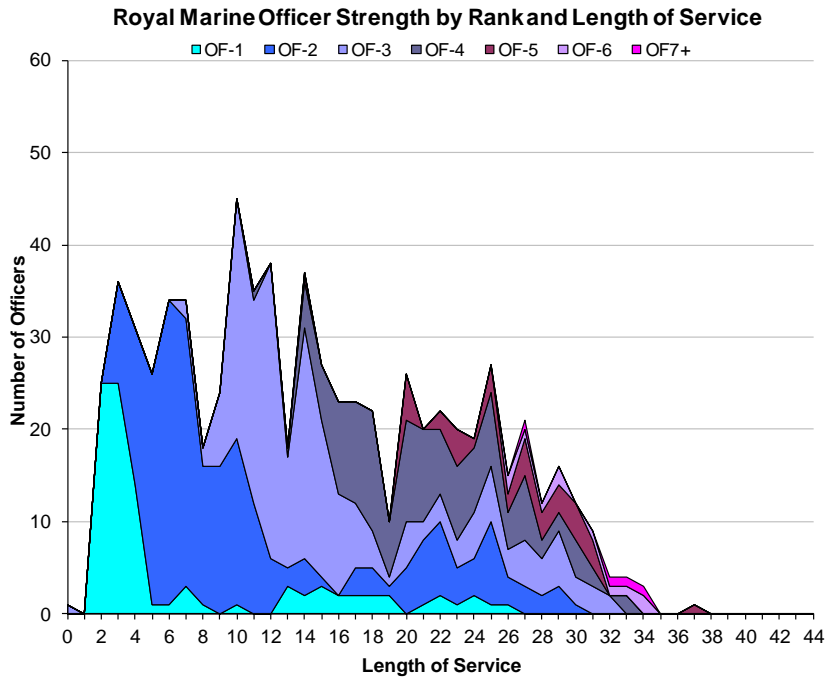
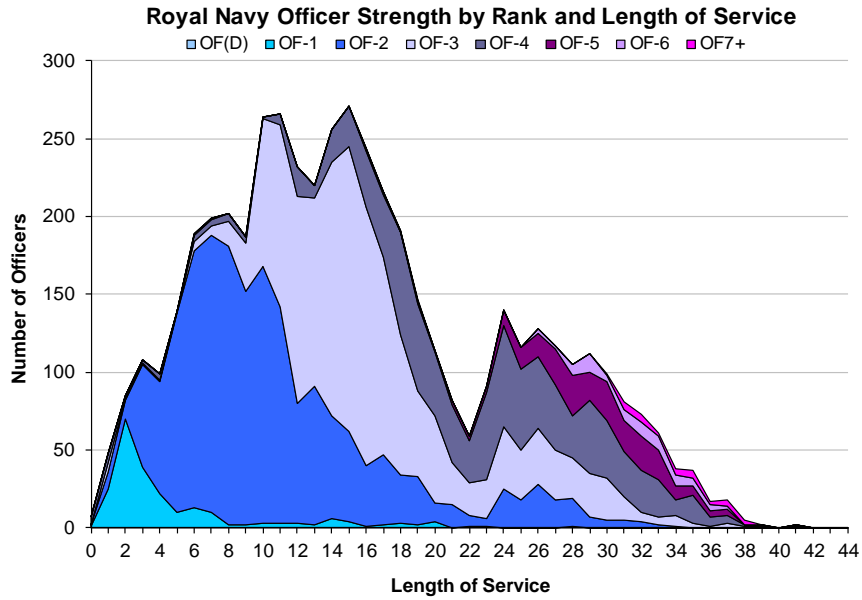
- 1 Flows data are for the last 12 months
- 2 LOS is taken from entry into the RN/RM
- 3 RN Rating and RM Other Rank exits include Promotion to Officer
- 4 Paid rank has been used for the current average LOS, but all other calculations feature substantive rank

Key

VO Voluntary Outflow
TX Time Expiry
OW Other Wastage
PTO Promotion to Officer

7b

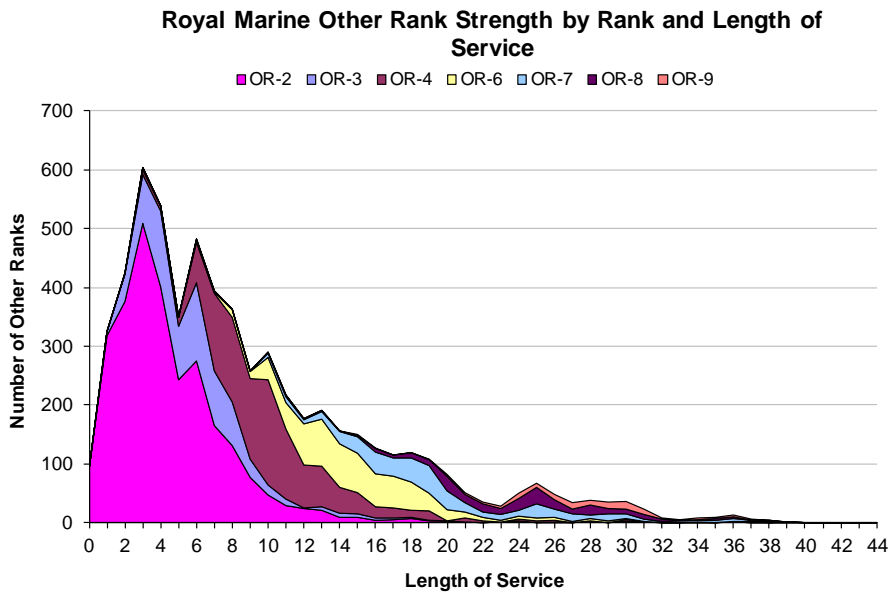
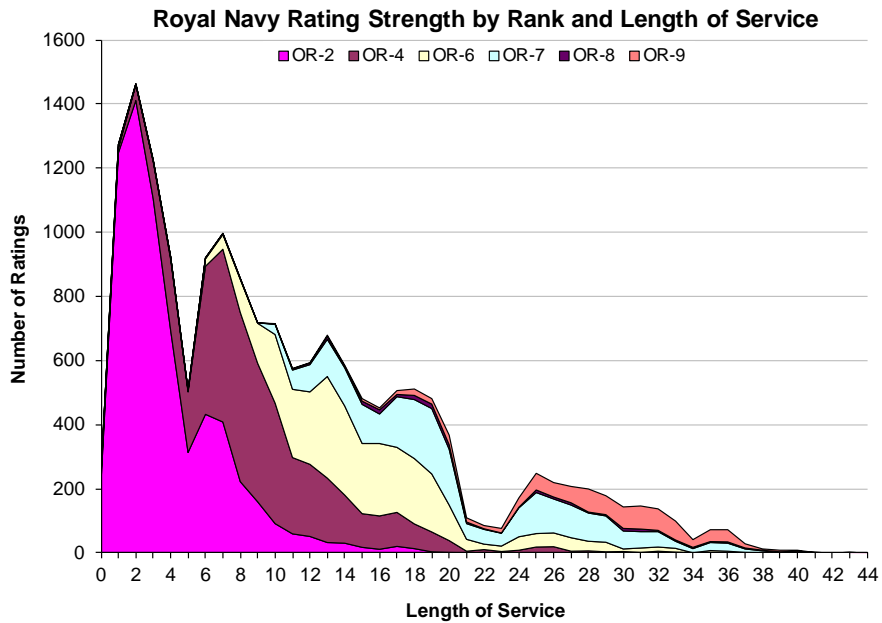
Trained Regular Officer Length of Service by Paid Rank



Oct-16 Edition.

7c

Trained Regular RN Rating and RM Other Ranks Length of Service by Paid Rank



Oct-16 Edition.

	2012/2013		2013/2014		2014/2015		2015/2016		12 Mths to 1st Oct 16		Actual Sep 16
	Nos.	%	Nos.	%	Nos.	%	Nos.	%	Nos.	%	
Total Officers	540	8.5%	460	7.6%	430	7.2%	420	7.1%	380	6.5%	40
Royal Navy Officers											
Total	460	8.3%	410	7.6%	380	7.3%	360	7.1%	320	6.4%	40
Voluntary Outflow	200	3.7%	230	4.3%	230	4.4%	210	4.1%	190	3.7%	20
Other Wastage	40	0.7%	30	0.6%	30	0.7%	30	0.7%	30	0.6%	~
Time Expiry	150	2.7%	140	2.7%	120	2.2%	110	2.2%	100	2.1%	10
Redundancy	70	1.2%	~	0.1%	~	0.0%	10	0.1%	-	0.0%	-
Royal Marine Officers											
Total	80	10.5%	60	7.4%	50	6.7%	60	7.4%	50	6.9%	10
Voluntary Outflow	30	4.1%	40	5.0%	20	2.9%	30	4.0%	30	3.7%	~
Other Wastage	10	1.7%	10	1.1%	10	1.7%	10	1.1%	10	1.1%	-
Time Expiry	20	2.9%	10	1.3%	20	2.0%	20	2.3%	20	2.1%	~
Redundancy	10	1.8%	-	0.0%	-	0.0%	-	0.0%	-	0.0%	-
Warfare											
Total	190	7.1%	200	7.4%	190	7.4%	160	6.4%	150	6.1%	20
Voluntary Outflow	90	3.1%	100	3.8%	120	4.4%	90	3.6%	90	3.6%	10
Other Wastage	20	0.7%	20	0.8%	20	0.8%	10	0.6%	20	0.6%	~
Time Expiry	70	2.7%	70	2.8%	60	2.2%	60	2.3%	50	1.9%	~
Redundancy	20	0.5%	~	0.0%	-	0.0%	-	0.0%	-	0.0%	-
Engineer											
Total	150	8.6%	140	8.7%	130	8.0%	130	8.3%	110	7.1%	10
Voluntary Outflow	90	5.0%	100	5.7%	80	4.6%	90	5.5%	70	4.4%	10
Other Wastage	10	0.6%	~	0.3%	10	0.5%	10	0.6%	10	0.6%	~
Time Expiry	50	2.8%	40	2.6%	50	2.8%	30	2.1%	30	2.1%	~
Redundancy	~	0.2%	-	0.0%	-	0.0%	-	0.0%	-	0.0%	-
Logistics											
Total	70	12.7%	20	4.8%	30	5.7%	20	4.8%	20	4.9%	~
Voluntary Outflow	10	2.6%	10	2.6%	20	3.9%	20	3.2%	20	3.2%	~
Other Wastage	~	0.7%	~	0.4%	~	0.2%	-	0.0%	~	0.2%	~
Time Expiry	10	1.3%	10	1.6%	10	1.6%	10	1.6%	10	1.6%	~
Redundancy	40	8.0%	~	0.2%	-	0.0%	-	0.0%	-	0.0%	-
Medical											
Total	40	9.6%	40	8.7%	30	7.0%	40	10.2%	30	7.3%	~
Voluntary Outflow	20	4.1%	20	3.4%	20	4.5%	20	4.3%	10	2.5%	-
Other Wastage	10	1.3%	10	1.6%	~	1.1%	10	2.3%	10	1.6%	-
Time Expiry	10	3.0%	10	3.0%	~	0.9%	10	2.3%	10	3.2%	~
Redundancy	~	1.1%	~	0.7%	~	0.5%	10	1.4%	-	0.0%	-
Chaplain											
Total	~	5.3%	~	7.0%	~	7.0%	~	7.1%	10	10.6%	~
Voluntary Outflow	~	1.8%	~	3.5%	~	3.5%	~	1.8%	~	3.5%	~
Other Wastage	-	0.0%	-	0.0%	-	0.0%	-	0.0%	-	0.0%	-
Time Expiry	~	3.5%	~	3.5%	~	3.5%	~	5.3%	~	7.1%	~
Redundancy	-	0.0%	-	0.0%	-	0.0%	-	0.0%	-	0.0%	-
Other / No Spec											
Total	-	N/A	-	N/A	-	N/A	-	N/A	-	N/A	-
Voluntary Outflow	-	N/A	-	N/A	-	N/A	-	N/A	-	N/A	-
Other Wastage	-	N/A	-	N/A	-	N/A	-	N/A	-	N/A	-
Time Expiry	-	N/A	-	N/A	-	N/A	-	N/A	-	N/A	-
Redundancy	-	N/A	-	N/A	-	N/A	-	N/A	-	N/A	-
Royal Marines General Service											
Total	80	10.0%	50	7.2%	50	6.2%	50	7.1%	50	6.7%	10
Voluntary Outflow	30	3.7%	40	4.8%	20	2.8%	30	3.7%	30	3.7%	~
Other Wastage	10	1.6%	10	1.1%	10	1.6%	10	1.1%	10	1.1%	~
Time Expiry	20	2.9%	10	1.4%	20	2.0%	20	2.3%	10	1.9%	~
Redundancy	10	1.8%	-	0.0%	-	0.0%	-	0.0%	-	0.0%	-
Royal Marines Band Service											
Total	~	16.9%	~	17.9%	-	0.0%	-	0.0%	-	0.0%	-
Voluntary Outflow	~	8.5%	~	17.9%	-	0.0%	-	0.0%	-	0.0%	-
Other Wastage	~	8.5%	-	0.0%	-	0.0%	-	0.0%	-	0.0%	-
Time Expiry	-	0.0%	-	0.0%	-	0.0%	-	0.0%	-	0.0%	-
Redundancy	-	0.0%	-	0.0%	-	0.0%	-	0.0%	-	0.0%	-
Career											
Total	-	N/A	-	N/A	-	N/A	-	N/A	-	N/A	-
Voluntary Outflow	-	N/A	-	N/A	-	N/A	-	N/A	-	N/A	-
Other Wastage	-	N/A	-	N/A	-	N/A	-	N/A	-	N/A	-
Time Expiry	-	N/A	-	N/A	-	N/A	-	N/A	-	N/A	-
Redundancy	-	N/A	-	N/A	-	N/A	-	N/A	-	N/A	-

* Total Figures in this table may deviate from those found in the UK Armed Forces Monthly Personnel Statistics. Please see the front pages for a comment on this.

		2012/2013		2013/2014		2014/2015		2015/2016		12 Mths to 1st Oct 16		Actual Sep 16
		Nos.	%	Nos.	%	Nos.	%	Nos.	%	Nos.	%	
Total Ratings		3,290	12.7%	2,760	11.2%	2,560	10.7%	2,180	9.2%	2,060	8.8%	250
Royal Navy Ratings												
	Total	2,390	12.1%	2,280	12.4%	2,000	11.2%	1,670	9.6%	1,530	8.8%	170
	Voluntary Outflow	1,060	5.3%	1,190	6.4%	1,160	6.5%	960	5.5%	860	4.9%	80
	Other Wastage	400	2.1%	380	2.1%	400	2.2%	410	2.3%	410	2.3%	50
	Time Expiry	530	2.7%	610	3.3%	380	2.1%	240	1.3%	200	1.2%	20
	Promotion to Officer	50	0.2%	70	0.4%	60	0.3%	70	0.4%	70	0.4%	20
	Redundancy	350	1.8%	40	0.2%	-	0.0%	-	0.0%	-	0.0%	-
Royal Marine Ratings												
	Total	900	14.6%	480	7.7%	570	9.0%	500	8.1%	530	8.7%	80
	Voluntary Outflow	560	9.0%	240	3.8%	340	5.3%	280	4.5%	280	4.6%	50
	Other Wastage	190	3.1%	130	2.1%	130	2.1%	160	2.6%	180	2.9%	20
	Time Expiry	140	2.3%	80	1.4%	80	1.3%	40	0.7%	60	0.9%	10
	Promotion to Officer	10	0.2%	20	0.4%	20	0.3%	20	0.2%	20	0.3%	-
	Redundancy	-	0.0%	-	0.0%	-	0.0%	-	0.0%	-	0.0%	-
Warfare (General Service)												
	Total	710	14.5%	550	12.1%	520	11.6%	370	9.2%	350	9.1%	40
	Voluntary Outflow	320	6.6%	300	6.6%	310	7.0%	230	5.7%	200	5.2%	20
	Other Wastage	110	2.2%	110	2.5%	110	2.4%	80	2.1%	100	2.5%	20
	Time Expiry	140	2.7%	130	2.8%	90	2.1%	50	1.2%	40	1.0%	-
	Promotion to Officer	10	0.2%	10	0.2%	10	0.2%	10	0.4%	10	0.3%	-
	Redundancy	140	2.7%	-	0.1%	-	0.0%	-	0.0%	-	0.0%	-
Warfare (Submarine)												
	Total	80	9.4%	80	9.8%	70	8.7%	50	8.4%	40	7.9%	10
	Voluntary Outflow	30	4.0%	30	4.0%	40	4.5%	20	3.3%	20	2.8%	-
	Other Wastage	20	2.2%	20	2.1%	20	2.3%	10	2.1%	10	1.9%	-
	Time Expiry	30	3.2%	20	3.2%	10	1.7%	20	2.7%	10	2.3%	-
	Promotion to Officer	-	0.0%	-	0.5%	-	0.1%	-	0.3%	-	0.9%	-
	Redundancy	-	0.0%	-	0.0%	-	0.0%	-	0.0%	-	0.0%	-
Warfare (Air)												
	Total	100	13.0%	80	11.5%	70	9.4%	50	8.2%	50	7.6%	-
	Voluntary Outflow	20	2.6%	40	5.0%	40	5.3%	30	5.0%	20	3.8%	-
	Other Wastage	10	1.8%	10	1.4%	10	2.0%	20	2.4%	20	2.4%	-
	Time Expiry	20	2.0%	20	2.7%	10	1.9%	-	0.2%	-	0.8%	-
	Promotion to Officer	-	0.5%	-	0.4%	-	0.3%	-	0.6%	-	0.6%	-
	Redundancy	50	6.0%	10	2.0%	-	0.0%	-	0.0%	-	0.0%	-
Engineering (General Service)												
	Total	600	14.1%	680	17.4%	550	15.1%	420	10.3%	380	9.0%	40
	Voluntary Outflow	310	7.3%	430	10.9%	330	9.0%	250	6.3%	230	5.5%	20
	Other Wastage	80	1.9%	90	2.2%	110	2.9%	100	2.4%	100	2.3%	10
	Time Expiry	120	2.7%	150	3.9%	100	2.7%	50	1.3%	30	0.8%	-
	Promotion to Officer	10	0.3%	20	0.4%	20	0.5%	20	0.4%	20	0.4%	10
	Redundancy	80	2.0%	-	0.0%	-	0.0%	-	0.0%	-	0.0%	-
Engineering (Submarine)												
	Total	200	9.5%	240	11.8%	240	12.6%	200	9.9%	170	8.0%	20
	Voluntary Outflow	110	5.2%	120	5.9%	140	7.1%	100	5.1%	80	3.7%	-
	Other Wastage	30	1.5%	50	2.3%	40	2.2%	60	2.7%	60	2.6%	-
	Time Expiry	60	2.7%	70	3.4%	60	3.0%	40	1.8%	30	1.4%	-
	Promotion to Officer	-	0.2%	-	0.2%	-	0.3%	-	0.2%	-	0.2%	-
	Redundancy	-	0.0%	-	0.0%	-	0.0%	-	0.0%	-	0.0%	-
Engineering (Air)												
	Total	240	7.7%	280	9.0%	260	8.7%	280	9.5%	270	9.5%	40
	Voluntary Outflow	110	3.3%	120	4.0%	170	5.7%	180	6.0%	170	6.0%	20
	Other Wastage	50	1.6%	50	1.5%	30	1.1%	40	1.5%	50	1.6%	-
	Time Expiry	70	2.2%	80	2.8%	40	1.3%	40	1.3%	30	1.2%	10
	Promotion to Officer	10	0.2%	20	0.7%	20	0.5%	20	0.7%	20	0.6%	-
	Redundancy	10	0.3%	-	0.0%	-	0.0%	-	0.0%	-	0.0%	-

* Total Figures in this table may deviate from those found in the UK Armed Forces Monthly Personnel Statistics. Please see the front pages for a comment on this.

		2012/2013		2013/2014		2014/2015		2015/2016		12 Mths to 1st Oct 16		Actual Sep 16
		Nos.	%	Nos.	%	Nos.	%	Nos.	%	Nos.	%	
Logistics	Total	340	12.2%	290	11.2%	240	9.0%	240	9.6%	210	8.4%	20
	Voluntary Outflow	110	3.9%	110	4.3%	110	4.4%	110	4.5%	100	4.0%	10
	Other Wastage	80	2.9%	50	1.8%	60	2.5%	90	3.5%	70	2.7%	10
	Time Expiry	90	3.3%	110	4.2%	50	2.0%	40	1.4%	40	1.5%	~
	Promotion to Officer	~	0.1%	10	0.3%	~	0.2%	10	0.3%	~	0.2%	~
	Redundancy	60	2.1%	20	0.7%	-	0.0%	-	0.0%	-	0.0%	-
Medical	Total	120	12.5%	90	10.2%	90	9.5%	90	9.9%	80	9.5%	10
	Voluntary Outflow	50	5.1%	40	4.8%	40	4.4%	40	4.9%	40	4.7%	10
	Other Wastage	20	2.1%	20	2.3%	20	2.3%	30	3.3%	30	2.9%	~
	Time Expiry	20	2.5%	20	2.4%	20	2.2%	10	0.9%	10	1.2%	~
	Promotion to Officer	10	1.0%	~	0.5%	~	0.6%	10	0.8%	~	0.6%	~
	Redundancy	20	1.8%	~	0.2%	-	0.0%	-	0.0%	-	0.0%	-
Other / No Spec	Total	-	N/A	-	N/A	-	N/A	-	N/A	-	N/A	-
	Voluntary Outflow	-	N/A	-	N/A	-	N/A	-	N/A	-	N/A	-
	Other Wastage	-	N/A	-	N/A	-	N/A	-	N/A	-	N/A	-
	Time Expiry	-	N/A	-	N/A	-	N/A	-	N/A	-	N/A	-
	Promotion to Officer	-	N/A	-	N/A	-	N/A	-	N/A	-	N/A	-
	Redundancy	-	N/A	-	N/A	-	N/A	-	N/A	-	N/A	-
Royal Marines General Service	Total	870	15.2%	440	7.7%	520	9.0%	460	8.0%	490	8.8%	70
	Voluntary Outflow	540	9.5%	220	3.9%	310	5.4%	260	4.6%	260	4.6%	40
	Other Wastage	180	3.2%	120	2.2%	120	2.1%	140	2.5%	160	2.9%	20
	Time Expiry	140	2.4%	70	1.3%	70	1.2%	40	0.7%	50	0.9%	10
	Promotion to Officer	10	0.1%	20	0.4%	20	0.3%	10	0.2%	20	0.3%	~
	Redundancy	-	0.0%	-	0.0%	-	0.0%	-	0.0%	-	0.0%	-
Royal Marines Band Service	Total	20	5.3%	30	7.6%	20	7.3%	20	5.8%	20	5.0%	~
	Voluntary Outflow	10	1.8%	10	2.6%	10	4.1%	10	2.6%	10	2.3%	~
	Other Wastage	~	1.5%	~	1.2%	-	0.0%	~	0.9%	~	1.2%	-
	Time Expiry	~	1.5%	10	3.2%	10	2.9%	10	2.0%	~	1.2%	-
	Promotion to Officer	~	0.6%	~	0.6%	~	0.3%	~	0.3%	~	0.3%	-
	Redundancy	-	0.0%	-	0.0%	-	0.0%	-	0.0%	-	0.0%	-
Career	Total	-	N/A	-	N/A	-	N/A	-	N/A	-	N/A	-
	Voluntary Outflow	-	N/A	-	N/A	-	N/A	-	N/A	-	N/A	-
	Other Wastage	-	N/A	-	N/A	-	N/A	-	N/A	-	N/A	-
	Time Expiry	-	N/A	-	N/A	-	N/A	-	N/A	-	N/A	-
	Promotion to Officer	-	N/A	-	N/A	-	N/A	-	N/A	-	N/A	-
	Redundancy	-	N/A	-	N/A	-	N/A	-	N/A	-	N/A	-

* Total Figures in this table may deviate from those found in the UK Armed Forces Monthly Personnel Statistics. Please see the front pages for a comment on this.

Oct-16 Edition.

	2012/2013		2013/2014		2014/2015		2015/2016		12 Months to 1st Oct 16		Actual Sep 16
	Nos.	%	Nos.	%	Nos.	%	Nos.	%			
Total Officers	240	3.7%	260	4.3%	250	4.2%	240	4.1%	220	3.7%	20
Royal Navy Officers											
Total	200	3.7%	230	4.3%	230	4.4%	210	4.1%	190	3.7%	20
OF9	-	-	-	-	-	-	-	-	-	-	-
OF8	-	-	-	-	-	-	-	-	-	-	-
OF7	-	-	-	-	-	-	~	3.7%	-	-	-
OF6	10	10.2%	10	13.9%	10	9.1%	~	2.9%	~	7.1%	-
OF5	10	5.3%	20	6.4%	20	8.1%	20	7.3%	20	7.0%	~
OF4	40	4.3%	40	4.8%	50	5.2%	30	3.8%	40	4.3%	~
OF3	70	3.9%	80	4.3%	80	4.4%	70	4.3%	60	3.6%	10
OF2	70	3.1%	80	3.7%	80	3.7%	80	4.1%	60	3.4%	~
OF1	-	-	-	-	~	1.0%	-	-	-	-	-
Royal Marine Officers											
Total	30	4.1%	40	5.0%	20	2.9%	30	4.0%	30	3.7%	~
OF9	-	-	-	-	-	-	-	-	-	-	-
OF8	-	-	-	-	-	-	-	-	-	-	-
OF7	-	-	-	-	-	-	-	-	-	-	-
OF6	~	27.3%	-	-	~	7.7%	~	15.2%	~	8.4%	-
OF5	-	-	~	5.8%	~	9.8%	~	9.2%	~	2.9%	-
OF4	10	5.1%	10	7.0%	-	-	~	4.0%	10	6.3%	~
OF3	10	3.9%	10	4.7%	~	1.7%	10	3.5%	10	3.5%	~
OF2	10	4.3%	20	5.2%	10	4.9%	10	4.6%	10	4.0%	~
OF1	-	-	-	-	-	-	-	-	-	-	-

* Total Figures in this table may deviate from those found in the UK Armed Forces Monthly Personnel Statistics. Please see the front pages for a comment on this.

Oct-16 Edition.

10b Trained Regular Royal Navy and Royal Marine Rating Voluntary Outflow Exits by Paid Rank*

		2012/2013		2013/2014		2014/2015		2015/2016	
		Nos.	%	Nos.	%	Nos.	%	Nos.	%
Total Ratings		1,610	6.2%	1,420	5.8%	1,490	6.2%	1,240	5.2%
Warfare (General Service)									
Total	320	6.6%	300	6.6%	310	7.0%	230	5.7%	
OR9	10	8.8%	~	3.3%	10	6.2%	10	6.4%	
OR8	~	13.4%	~	9.3%	~	16.1%	~	32.9%	
OR7	40	6.4%	20	4.2%	20	4.1%	20	4.3%	
OR6	40	4.4%	30	3.5%	20	3.3%	20	3.4%	
OR4	60	4.4%	60	5.2%	70	5.7%	50	4.9%	
OR2	180	8.7%	180	9.8%	180	10.3%	120	7.4%	
Warfare (Submarine)									
Total	30	4.0%	30	4.0%	40	4.5%	20	3.3%	
OR9	~	11.5%	~	3.1%	-	-	~	3.2%	
OR8	-	-	-	-	-	-	-	-	
OR7	~	2.9%	10	7.2%	~	4.2%	~	3.7%	
OR6	~	1.6%	~	3.4%	~	0.9%	-	-	
OR4	~	2.3%	~	0.6%	~	1.8%	-	-	
OR2	20	5.2%	20	4.9%	30	7.4%	20	5.7%	
Warfare (Air)									
Total	20	2.6%	40	5.0%	40	5.3%	30	5.0%	
OR9	~	3.1%	~	13.7%	10	21.9%	~	8.6%	
OR8	-	-	-	-	-	-	-	-	
OR7	~	5.7%	~	6.2%	10	10.0%	~	6.5%	
OR6	~	1.9%	10	5.3%	~	3.4%	~	2.1%	
OR4	~	1.7%	10	3.7%	~	2.5%	10	5.9%	
OR3	-	-	-	-	-	-	-	-	
OR2	10	2.9%	10	4.5%	10	5.4%	10	5.1%	
Engineering (General Service)									
Total	310	7.3%	430	10.9%	330	9.0%	250	6.3%	
OR9	20	12.3%	10	6.7%	10	5.6%	10	2.6%	
OR8	30	12.8%	40	15.4%	10	15.3%	10	19.3%	
OR7	50	5.5%	70	9.0%	50	7.2%	30	4.6%	
OR6	50	7.0%	70	11.0%	50	9.7%	20	3.7%	
OR4	50	5.6%	80	9.3%	70	9.2%	70	7.6%	
OR2	120	8.0%	170	12.7%	120	9.7%	110	7.6%	
Engineering (Submarine)									
Total	110	5.2%	120	5.9%	140	7.1%	100	5.1%	
OR9	~	4.8%	~	1.7%	~	1.4%	~	1.1%	
OR8	10	4.0%	~	1.2%	10	6.1%	~	0.7%	
OR7	30	6.0%	40	7.9%	30	8.7%	20	5.7%	
OR6	30	9.0%	30	11.9%	30	11.0%	10	4.6%	
OR4	20	5.3%	20	5.8%	40	10.7%	40	8.1%	
OR2	20	2.9%	20	3.8%	30	3.7%	30	4.5%	
Engineering (Air)									
Total	110	3.3%	120	4.0%	170	5.7%	180	6.0%	
OR9	~	5.5%	~	7.2%	~	3.9%	~	3.2%	
OR8	~	2.0%	~	5.4%	~	2.8%	~	7.7%	
OR7	20	3.5%	20	3.9%	30	6.5%	20	3.9%	
OR6	20	3.0%	30	4.0%	30	4.5%	30	4.6%	
OR4	20	3.1%	10	1.7%	30	3.3%	30	4.2%	
OR2	40	3.6%	60	5.6%	80	8.1%	100	9.5%	

12 Months to 1st Oct 16		Actual Sep 16
Nos.	%	
1,140	4.8%	130
200	5.2%	20
10	5.6%	-
~	49.0%	-
30	5.4%	~
20	2.4%	-
40	4.0%	~
110	7.1%	10
20	2.8%	~
~	3.3%	-
-	-	-
~	1.3%	-
-	-	-
~	1.7%	~
10	4.4%	~
20	3.8%	~
~	12.3%	~
-	-	-
~	2.7%	-
~	3.7%	~
~	2.5%	-
-	-	-
10	4.2%	~
230	5.5%	20
10	3.1%	-
~	6.9%	-
10	1.6%	~
20	2.6%	~
70	7.8%	10
120	7.5%	10
80	3.7%	~
~	2.9%	~
~	0.7%	-
10	2.9%	-
10	3.3%	~
40	7.6%	~
20	2.6%	-
170	6.0%	20
~	4.1%	~
~	11.3%	-
20	3.6%	~
20	4.0%	~
30	4.5%	~
100	9.6%	10

* Total Figures in this table may deviate from those found in the UK Armed Forces Monthly Personnel Statistics. Please see the front pages for a comment on this.

Oct-16 Edition.

	2012/2013		2013/2014		2014/2015		2015/2016		12 Months to 1st Oct 16		Actual Sep 16
	Nos.	%	Nos.	%	Nos.	%	Nos.	%	Nos.	%	
Logistics											
Total	110	3.9%	110	4.3%	110	4.4%	110	4.5%	100	4.0%	10
OR9	~	6.5%	~	8.7%	~	1.6%	~	8.1%	~	6.4%	-
OR8	-	-	-	-	-	-	-	-	-	-	-
OR7	10	4.1%	10	5.5%	~	2.2%	10	4.3%	~	1.7%	-
OR6	10	2.1%	10	3.5%	10	2.0%	10	2.0%	10	2.0%	~
OR4	30	3.4%	20	3.2%	30	4.5%	20	2.0%	10	1.9%	~
OR3	-	-	-	-	-	-	~	14.3%	~	14.6%	-
OR2	60	4.5%	60	4.9%	60	5.7%	70	6.8%	70	6.5%	~
Medical											
Total	50	5.1%	40	4.8%	40	4.4%	40	4.9%	40	4.7%	10
OR9	~	11.2%	~	11.1%	~	3.6%	~	6.8%	~	3.4%	-
OR8	-	-	-	-	-	-	-	-	~	171.4%	-
OR7	~	3.3%	~	4.3%	10	5.1%	10	6.0%	~	4.3%	-
OR6	~	2.8%	~	1.7%	10	4.7%	10	4.9%	~	3.1%	~
OR4	20	5.6%	20	7.2%	10	4.3%	10	2.6%	10	2.3%	~
OR3	-	-	-	-	-	-	-	-	-	-	-
OR2	20	6.4%	10	4.1%	10	4.3%	20	6.6%	20	7.8%	10
Royal Marines General Service											
Total	540	9.5%	220	3.9%	310	5.4%	260	4.6%	260	4.6%	40
OR9	10	10.2%	~	1.2%	~	3.5%	~	2.3%	-	-	-
OR8	10	4.0%	10	3.9%	~	1.3%	10	2.7%	10	3.1%	~
OR7	20	3.9%	10	1.9%	10	1.6%	~	1.1%	10	1.6%	~
OR6	30	5.3%	10	1.1%	~	0.7%	10	1.8%	10	1.3%	~
OR4	140	12.7%	30	2.5%	30	2.8%	30	3.0%	20	2.4%	~
OR3	20	3.0%	20	2.6%	20	3.5%	20	3.5%	20	3.5%	~
OR2	330	11.8%	160	5.6%	240	8.5%	180	6.7%	190	7.3%	30
Royal Marines Band Service											
Total	10	1.8%	10	2.6%	10	4.1%	10	2.6%	10	2.3%	~
OR9	-	-	-	-	-	-	-	-	-	-	-
OR8	-	-	-	-	~	8.2%	-	-	-	-	-
OR7	-	-	-	-	~	3.2%	-	-	-	-	-
OR6	-	-	~	3.9%	~	2.1%	~	2.0%	-	-	-
OR4	-	-	~	1.7%	-	-	~	1.6%	~	6.8%	~
OR3	-	-	-	-	-	-	-	-	-	-	-
OR2	10	3.3%	10	3.3%	10	5.9%	10	3.8%	~	2.2%	~

* Total Figures in this table may deviate from those found in the UK Armed Forces Monthly Personnel Statistics. Please see the front pages for a comment on this.

11a Trained Regular Royal Navy and Royal Marine Officer Promotions to Substantive Rank					
	2012/2013	2013/2014	2014/2015	2015/2016	12 Months to 1st Oct 16
Total Officers	490	510	560	600	600
OF7 and Above	10	10	10	10	10
OF6	20	20	30	10	20
OF5	30	50	70	50	40
OF4	100	90	110	130	130
OF3	210	220	240	290	290
OF2	120	120	100	100	100

11b Trained Regular Royal Navy and Royal Marine Rating and Other Rank Promotions to Substantive Rank					
	2012/2013	2013/2014	2014/2015	2015/2016	12 Months to 1st Oct 16
Total Ratings	1,530	2,660	1,990	2,500	2,340
OR9	30	110	80	260	190
OR8	30	150	100	150	90
OR7	300	420	360	440	380
OR6	410	740	560	670	650
OR4	760	1,220	900	990	1,030
OR3	~	-	-	-	~

Oct-16 Edition.

12a Gains to the Trained Regular Royal Navy and Royal Marines Officer Strength from Untrained by Branch

		2012/2013	2013/2014	2014/2015	2015/2016	12 Months to 1st Oct 16
Royal Navy	Officers					
	Total	290	240	280	250	310
Royal Marines	Officers					
	Total	50	50	60	60	60
	Warfare	140	110	140	100	150
	Engineer	100	80	100	80	90
	Logistics	20	20	30	20	30
	Medical	20	20	20	40	40
	Chaplain	~	~	-	10	10
	Other	-	-	-	-	-
	Royal Marines General Service	50	50	60	60	60
	Royal Marines Band Service	~	-	-	~	~

		Oct-15	Nov-15	Dec-15	Jan-16	Feb-16	Mar-16	Apr-16	May-16	Jun-16	Jul-16	Aug-16	Sep-16
Royal Navy	Officers												
	Total	40	~	30	20	20	20	40	40	40	-	~	60
Royal Marines	Officers												
	Total	-	-	40	-	10	-	-	-	-	-	-	-
	Warfare	30	~	20	~	10	10	20	20	10	~	~	30
	Engineer	~	~	10	20	10	10	~	10	10	-	~	10
	Logistics	-	-	-	-	-	-	10	~	10	-	-	10
	Medical	~	-	~	-	-	-	10	10	~	-	-	~
	Chaplain	-	-	-	-	~	-	-	-	-	-	-	~
	Other	-	-	-	-	-	-	-	-	-	-	-	-
	Royal Marines General Service	-	-	40	-	10	-	-	-	-	-	-	-
	Royal Marines Band Service	-	-	-	-	~	-	-	-	-	-	-	-

Oct-16 Edition.

12b Gains to the Trained Regular Royal Navy and Royal Marine Rating Strength from Untrained

		2012/2013	2013/2014	2014/2015	2015/2016	12 Months to 1st Oct 16
Royal Navy	Ratings					
	Total	980	1,230	1,580	1,440	1,400
Royal Marines	Other Ranks					
	Total	540	650	520	360	350
Warfare	Total	270	310	450	400	380
(General Service)	Warfare Specialist (WS)	120	120	160	140	70
	WS (Above Water Tactical)	-	-	-	20	80
	WS (Above Water Warfare)	-	-	-	-	-
	WS (Electronic Warfare)	-	-	-	-	-
	WS (Under Water)	-	-	-	-	-
	Comms Info Systems Specialist	40	40	80	10	-
	Hydrographic/Meteorological (H/M)	20	20	20	20	10
	H/M (Hydrographic)	-	-	-	-	10
	H/M (Meteorological)	-	-	-	-	-
	Mine Warfare	40	50	50	40	40
	Diver	20	30	30	30	30
	Seaman Specialist	20	40	100	110	110
	Naval Airman (Photographer)	-	-	-	-	-
	Physical Training Instructor	-	-	-	-	-
	Royal Navy Police	-	-	-	-	-
	Communications Technician	10	10	10	20	20
	Unspecified	-	-	-	-	-
Warfare	Total	40	50	80	60	40
(Submarine)	Coxswain (Submarines)	-	-	-	-	-
	Warfare Specialist (Sensors Submarines)	20	30	40	20	20
	Warfare Specialist (Tactical Submarines)	10	10	20	30	30
	Comms Info Systems Spec (Submarines)	10	10	20	10	-
	Unspecified	-	-	-	-	-
Warfare (Air)	Total	20	30	70	60	70
	Aircrewman	-	-	-	-	-
	Naval Airman (Aircraft Control)	10	-	10	10	10
	Naval Airman (Aircraft Handler)	10	30	60	50	60
	Royal Marines Aircrewman	-	-	-	-	-
	Unspecified	-	-	-	-	-
Engineering	Total	210	310	350	370	360
(General Service)	Marine Engineer Mechanic	-	-	-	-	-
	Weapon Engineer Mechanic	-	-	-	-	-
	Engineer Technician (Marine Engineer)	150	200	190	200	210
	Engineer Technician (Weapon Engineer)	60	120	160	170	150
	Unspecified	-	-	-	-	-
Engineering	Total	130	150	190	130	160
(Submarine)	Marine Engineer Mechanic	-	-	-	-	-
	Weapon Engineer Mechanic	-	-	-	-	-
	Engineer Technician (Marine Engineer Sub)	90	90	110	60	100
	Engineer Tech (Weapon Engineer Sub)	40	70	80	70	60
Engineering (Air)	Total	100	190	200	210	190
	Air Engineer Artificer	-	-	-	-	-
	Air Engineer Mechanic	-	-	-	-	-
	Air Engineer Technician	100	180	190	200	180
	Naval Airman (Survival Equipment)	-	10	10	10	10
	Unspecified	-	-	-	-	-
Logistics	Total	140	120	180	160	160
	Caterer	-	-	-	-	-
	Chef	40	50	90	50	40
	Steward	20	30	10	20	20
	Supply Chain	30	30	40	50	40
	Writer	50	20	30	50	50
	Family Service	-	-	-	-	-
	Unspecified	-	-	-	-	-
Medical	Total	60	60	60	50	40
	Dental Hygienist	-	-	-	-	-
	Dental Surgery Assistant	-	-	-	-	10
	Medical Assistant	40	50	40	40	20
	Naval Nurse	10	-	20	10	10
	Medical Technician	-	-	-	-	-
	Royal Marines Medical Assistant	-	-	-	-	-
	Unspecified	-	-	-	-	-
RM General Service Total		520	630	490	350	330
RM Band Service	Total	20	20	30	20	20
	Band	20	20	30	10	10
	Bugler	-	10	-	-	-

12b Gains to the Trained Regular Royal Navy and Royal Marines Rating Strength from Untrained by Branch and Specialisation (Cont)

		Oct-15	Nov-15	Dec-15	Jan-16	Feb-16	Mar-16	Apr-16	May-16	Jun-16	Jul-16	Aug-16	Sep-16
Royal Navy	Ratings												
	Total	200	130	120	100	110	120	80	50	200	120	10	160
Royal Marines	Other Ranks												
	Total	40	20	20	20	40	-	40	-	60	50	-	70
Warfare (General Service)	Total	30	50	30	20	50	40	-	20	50	40	-	40
	Warfare Specialist (WS)	10	10	10	10	10	10	-	10	-	-	-	-
	WS (Above Water Tactical)	-	-	-	-	10	10	-	10	10	10	-	30
	WS (Above Water Warfare)	-	-	-	-	-	-	-	-	-	-	-	-
	WS (Under Water)	-	-	-	-	-	-	-	-	-	-	-	-
	WS (Electronic Warfare)	-	-	-	-	-	-	-	-	-	-	-	-
	Comms Info Systems Specialist	-	-	-	-	-	-	-	-	-	-	-	-
	Hydrographic/Meteorological (H/M)	-	-	-	-	10	-	-	-	-	-	-	-
	H/M (Hydrographic)	-	-	-	-	-	-	-	-	-	10	-	-
	H/M (Meteorological)	-	-	-	-	-	-	-	-	-	-	-	-
	Mine Warfare	-	10	10	-	10	10	-	-	10	-	-	-
	Diver	-	10	-	-	10	-	-	-	10	10	-	-
	Seaman Specialist	10	10	10	-	10	20	-	10	10	10	-	10
	Naval Airman (Photographer)	-	-	-	-	-	-	-	-	-	-	-	-
	Physical Training Instructor	-	-	-	-	-	-	-	-	-	-	-	-
	Royal Navy Police	-	-	-	-	-	-	-	-	-	-	-	-
	Communications Technician	-	10	-	-	-	-	-	-	10	-	-	-
	Unspecified	-	-	-	-	-	-	-	-	-	-	-	-
Warfare (Submarine)	Total	10	-	-	-	-	-	10	-	10	10	-	-
	Coxswain (Submarines)	-	-	-	-	-	-	-	-	-	-	-	-
	Warfare Specialist (Sensors Submarines)	-	-	-	-	-	-	-	-	-	-	-	-
	Warfare Specialist (Tactical Submarines)	10	-	-	-	-	-	-	-	10	10	-	-
	Comms Info Sys Specialist (Submarines)	-	-	-	-	-	-	-	-	-	-	-	-
	Unspecified	-	-	-	-	-	-	-	-	-	-	-	-
Warfare (Air)	Total	-	20	-	10	-	20	-	-	20	-	-	-
	Aircrewman	-	-	-	-	-	-	-	-	-	-	-	-
	Naval Airman (Aircraft Control)	-	-	-	10	-	-	-	-	-	-	-	-
	Naval Airman (Aircraft Handler)	-	20	-	-	-	20	-	-	20	-	-	-
	Royal Marines Aircrewman	-	-	-	-	-	-	-	-	-	-	-	-
	Unspecified	-	-	-	-	-	-	-	-	-	-	-	-
Engineering (General Service)	Total	70	40	40	10	20	20	10	10	60	30	-	60
	Marine Engineer Mechanic	-	-	-	-	-	-	-	-	-	-	-	-
	Weapon Engineer Mechanic	-	-	-	-	-	-	-	-	-	-	-	-
	Engineer Technician (Marine Engineer)	40	20	20	-	20	20	10	-	40	10	-	30
	Engineer Technician (Weapon Engineer)	30	20	10	10	-	-	-	10	10	20	-	30
	Unspecified	-	-	-	-	-	-	-	-	-	-	-	-
Engineering (Submarine)	Total	30	-	10	30	-	-	20	-	30	20	-	10
	Marine Engineer Mechanic	-	-	-	-	-	-	-	-	-	-	-	-
	Weapon Engineer Mechanic	-	-	-	-	-	-	-	-	-	-	-	-
	Engineer Technician (Marine Engineer Sub)	20	-	-	20	-	-	20	-	20	20	-	10
	Engineer Tech (Weapon Engineer Sub)	10	-	10	10	-	-	10	-	10	-	-	-
Engineering (Air)	Total	30	20	20	20	20	10	20	10	10	20	-	20
	Air Engineer Artificer	-	-	-	-	-	-	-	-	-	-	-	-
	Air Engineer Mechanic	-	-	-	-	-	-	-	-	-	-	-	-
	Air Engineer Technician	30	20	20	10	20	10	20	10	10	20	-	20
	Naval Airman (Survival Equipment)	-	-	-	10	-	-	-	-	-	-	-	-
	Unspecified	-	-	-	-	-	-	-	-	-	-	-	-
Logistics	Total	20	-	20	10	10	10	20	10	20	10	-	20
	Caterer	-	-	-	-	-	-	-	-	-	-	-	-
	Chef	-	-	10	10	-	-	-	-	-	10	-	-
	Steward	-	-	-	-	-	10	-	-	-	-	-	-
	Supply Chain	10	-	-	-	10	-	10	-	10	-	-	10
	Writer	10	-	10	-	-	-	10	-	10	-	-	10
	Family Service	-	-	-	-	-	-	-	-	-	-	-	-
	Unspecified	-	-	-	-	-	-	-	-	-	-	-	-
Medical	Total	10	-	10	-	-	-	-	-	-	-	-	10
	Dental Hygienist	-	-	-	-	-	-	-	-	-	-	-	-
	Dental Surgery Assistant	-	-	-	-	-	-	-	-	-	-	-	-
	Medical Assistant	10	-	-	-	-	-	-	-	-	-	-	10
	Naval Nurse	-	-	-	-	-	-	-	-	-	-	-	-
	Medical Technician	-	-	-	-	-	-	-	-	-	-	-	-
	Royal Marines Medical Assistant	-	-	-	-	-	-	-	-	-	-	-	-
	Unspecified	-	-	-	-	-	-	-	-	-	-	-	-
RM General Service Total		40	20	20	20	40	-	40	-	60	50	-	60
RM Band Service	Total	-	-	-	-	-	-	-	-	-	-	-	10
	Band	-	-	-	-	-	-	-	-	-	-	-	10
	Bugler	-	-	-	-	-	-	-	-	-	-	-	-

13

Trained Intake to the Regular Royal Navy and Royal Marine Service

	2012/2013	2013/2014	2014/2015	2015/2016	12 Months to 1st Oct 16	Actual Sep 16
Total Officers	10	~	10	20	10	-
Warfare	~	~	~	~	~	-
Engineer	~	~	~	~	~	-
Logistics	~	-	-	-	-	-
Medical	-	~	~	10	~	-
Chaplain	-	~	~	-	-	-
Royal Marines General Service	~	~	~	~	~	-
Royal Marines Band Service	-	-	-	-	-	-
No Value	-	-	-	-	-	-
Total Ratings	60	70	60	80	90	10
Warfare (General Service)	20	10	10	20	20	~
Warfare (Submarine)	-	-	~	~	~	-
Warfare (Air)	~	~	~	~	~	~
Engineering (General Service)	~	10	~	20	20	~
Engineering (Submarine)	-	~	~	~	10	-
Engineering (Air)	~	10	~	~	~	-
Logistics	~	~	10	10	20	~
Medical	~	~	10	10	10	~
Royal Marines General Service	20	30	10	~	10	~
Royal Marines Band Service	~	~	-	-	-	-
No Value	-	-	-	~	~	-

The figures above show trained intake to the regular strength from Civil Life, from Another Service, from LTA, To Other Ranks from Officer and To Officer from Other Ranks

Oct-16 Edition.