



Statistical Release

Vocational and Other Qualifications Quarterly April to June 2016

Contents

| | |
|-------------------------------------|----|
| Key points..... | 1 |
| Introduction..... | 2 |
| External influences..... | 4 |
| Table of key statistics..... | 7 |
| Number of certificates awarded..... | 8 |
| Analysis..... | 9 |
| Background notes..... | 19 |
| Glossary of terms..... | 27 |
| Your feedback..... | 29 |
| Appendix..... | 30 |

Published:

22 September 2016

Vikas Dhawan

Head of Profession

statistics@ofqual.gov.uk

Key points

This release presents information on the range and number of, and certificates issued for, regulated qualifications during April to June 2016 (2016 Q2), excluding GCSEs and A levels. The key findings are:

- Just over 1.65 million certificates were awarded, a decrease of 13% on the same quarter of 2015 and the lowest number of certificates awarded during quarter 2 in the five-year period.
- The number of available qualifications this quarter increased by 46% from 21,676 in the previous quarter to 31,600, primarily due to changes in the way Welsh qualifications are recorded.
- The qualification with the most certificates this quarter was BCS Level 2 ECDL Certificate in IT Application Skills with 50,650 certificates awarded.
- The number of certificates issued for Level 1 qualifications decreased by 15% (from 465,400 to 395,350) and Level 2 qualifications decreased by 12% (from 787,500 to 692,250) on the same quarter in 2015. The number of certificates issued for Level 3 qualifications decreased by 8% (from 309,450 to 285,950).
- The number of certificates awarded for qualifications at Level 4 and above has increased by 13% on the same quarter in 2015 (from 28,950 to 32,650). The increase was mainly in qualifications in the sector of business, administration and law.
- The highest number of certificates awarded by sector subject area of qualification in this quarter was for Preparation for Life and Work (497,300 certificates).

Introduction

Ofqual regulates qualifications and assessments in England and until May 2016 (that is, including the period covered by this bulletin), it also regulated vocational qualifications in Northern Ireland. This bulletin includes data on vocational and other qualifications on behalf of Qualifications Wales, the regulator in Wales, and on 'other general' qualifications (see glossary) and entry level qualifications on behalf of the regulator in Northern Ireland (CCEA). Ofqual's objectives include promoting public confidence in and awareness of regulated qualifications.

Regulated qualifications are classified into 19 qualification types with an associated 'level', which is indicative of the level of demand. The table below shows the current levels for each type of qualification and the relationship between them. Level 3 is at about the same level of demand, but not necessarily the same size, as an A level, and Level 2 is at about the same level of demand as a GCSE at grade C or above.

On 1 October 2015, Ofqual withdrew the Qualifications and Credit Framework (QCF) requirements. This means that from that date, the QCF type has ceased to exist. However, for administrative reasons, awarding organisations could still use the QCF type on the system for new qualifications when no other type was appropriate, until our new system was introduced in summer 2016.

Table of qualification types and levels

| Qualification type | Current levels |
|---|--------------------------------|
| Advanced Extension Award | Level 3 |
| Basic skills | Entry level, Levels 1 and 2 |
| English for speakers of other languages | Entry level, Levels 1, 2 and 3 |
| Entry level | Entry |
| Free-standing mathematics qualification | Levels 1, 2, 3 |
| Functional skills | Entry level, Levels 1 and 2 |
| GCE A level | Level 3 |
| GCE AS qualification | Level 3 |
| GCSE (9 to 1) | Level 1/Level 2 |
| GCSE | Level 1/Level 2 |
| Higher level | Levels 4 to 8 |
| Key skills | Levels 1 to 4 |
| NVQ | Levels 1 to 5 |
| 'Other general' qualification | Levels 1, 1/2, 2 and 3 |
| Occupational qualification | Levels 1 to 4 |
| Principal learning | Levels 1 to 3 |
| Project | Levels 1 to 3 |
| QCF | Entry level, Levels 1 to 8 |
| Vocationally related qualification | Entry level, Levels 1 to 8 |

This release presents data on regulated vocational and other qualifications¹ (coloured blue in the table above) for both the April to June 2016 quarter and the 12-month period ending June 2016.

This release does not include the rest of the qualifications given in the above table - Advanced Extension Award, GCSEs, AS and A levels, project and principal learning, on which data are published separately. Neither does it include university degrees, which Ofqual does not regulate.

¹ Vocational and other qualifications are taken in order to develop and demonstrate the skills needed for a particular job, to improve career progression, or for personal growth or leisure purposes. They include some qualifications taken in schools, sixth forms and colleges, for example Level 1/ Level 2 Certificates and BTECs.

External influences

Changes in the number of qualifications available and the number of certifications are likely to be influenced by changes to government policies in England, including changes in government funding, performance tables and study programmes.

Public funding changes by the Skills Funding Agency²

In the last few years, the funding rules for vocational qualifications aimed at students who are over 19 years of age have seen a number of changes that are likely to have had some effect on the number of certificates awarded each year. The Skills Funding Agency (SFA) introduced new business rules³ in September 2013 to target funding at qualifications that most closely align with the government's skills policy. A particular aspect of these rules was the withdrawal of funding for qualifications with low enrolment. The funding rule changes for 2014/15 included a requirement that qualifications have at least 15 credits for adult learning and have clear outcomes for progression to employment or the next level of learning. New funding rules⁴ have been introduced during 2015/16, but it is too early to find any visible impact of these particular new rules on the statistics reported in this bulletin. Throughout these statistics, however, there are examples of continued declines in the numbers of certifications for qualifications which do not meet the rules introduced in 2013, and from which funding has therefore been removed.

Legal entitlement and local flexibility

Only certain qualifications are now eligible for funding through the legal entitlement⁵ for 2016 to 2017. This is for learners aged 16 to 23 who are studying their first qualification at Level 2 and/or Level 3. These include the qualifications that are included in the performance tables.

² The Skills Funding Agency funds adult skills training for further education in England. It supports over 1,000 colleges, private training organisations and employers with more than £4 billion of funding each year.

³ Skills Funding Statement 2013–2016: <https://www.gov.uk/guidance/sfa-funding-rules>

⁴

https://www.gov.uk/government/uploads/system/uploads/attachment_data/file/414800/Funding_Rules_v2_summary_of_changes_March_2015.pdf

⁵https://www.gov.uk/government/uploads/system/uploads/attachment_data/file/510279/TheLegalEntitlements_v2_Mar2016.pdf

The SFA is working towards full devolution, putting greater power in the hands of local authorities to meet skills gaps for their area. The latest changes, for 2016 to 2017⁶, set out how qualifications that do not qualify for legal entitlement, outside of apprenticeships, are eligible for funded delivery as part of its 'local flexibility' policy. The local flexibility policy is based on the view that local areas, colleges and other training organisations are best placed to decide on the most appropriate type of training provision to respond to local needs. To support local area needs and deliver agreed local outcomes, funding allocations will be decided by local authorities - and colleges and other training organisations will decide on the most appropriate form of training provision. This may or may not include qualifications.

Advanced learner loans are now available for all learners aged over 24, and will be available for learners aged 19+ from 1 August 2016 for Level 3 to Level 6 qualifications⁷.

These changes are beginning to have an impact on types of qualifications taken, the numbers of certifications and the risks those qualifications face.

School performance tables⁸

Over the last few years, there has been a considerable change in the way that qualifications are used in schools following the Wolf Report⁹. In 2013, any qualification on the section 96¹⁰ funding list could count towards the school and college performance tables at Key Stage 4 and Key Stage 5. Since 2014, only a small number of non-GCSEs or A levels have been included in performance tables.

⁶https://www.gov.uk/government/uploads/system/uploads/attachment_data/file/510278/Qualification_Eligibility_Principles_v1.pdf

⁷ <https://www.gov.uk/government/publications/advanced-learner-loans-qualifications-catalogue>

⁸ The key government benchmark for the attainment of Key Stage 4 pupils (aged 15 to 16) is the percentage of pupils gaining the equivalent of at least five A* to C GCSE passes, including English and mathematics, though this is changing. Some other qualifications can also be counted in performance tables.

⁹ Review of Vocational Education – The Wolf Report (March 2011) considered how the Department for Education can improve vocational education for those aged 14 to 19:
www.gov.uk/government/uploads/system/uploads/attachment_data/file/180504/DFE-00031-2011.pdf

¹⁰ Where section 96 approval has been awarded to a qualification, it enables that qualification to be taught in funded institutions, such as maintained schools, academies and post-16 institutions, and for public funds to be used for these courses and qualifications.

This is likely to have led to changes in schools' and colleges' curriculum and qualifications choices, away from qualifications that are not included in performance tables.

Moreover, qualifications in these tables were previously weighted; larger qualifications gained a higher rating and could be worth more than one qualification in the performance tables. This is no longer the case and all qualifications now count as one qualification, making larger qualifications less attractive. Examples of declines in numbers of certifications for some qualifications as a result of these changes can be seen in these statistics.

Changes to qualifications in Wales

Qualifications Wales (QW) have developed their own system to regulate funded qualifications in Wales – their qualification records are maintained separately and have a different method of identification (a QW Approval/Designation Number). As Ofqual are still collecting data on behalf of Qualifications Wales, we have incorporated these qualification records in to our data collection process. As this is the first quarter in which data is recorded in this way, all Welsh qualifications are considered to be 'new' in this quarter's report. The overall number of available qualifications has therefore increased significantly this quarter, because awarding organisations are currently reporting certificates for candidates at centres in Wales against either the Ofqual qualification or the QW qualification.

Table of key statistics

| | January-March 2016 | April-June 2016 | % change on previous qtr |
|--|-----------------------|-----------------|-----------------------------|
| Number of available qualifications | 21,676 | 31,600 | 46 |
| Number of awarding organisations | | | |
| with available qualifications this quarter | 155 | 157 | 1 |
| and certificates awarded in the last 12 months | 150 | 152 | 1 |
| Number of available qualifications by type | | | |
| Basic skills | 4 | 4 | 0 |
| English for speakers of other languages | 142 | 171 | 20 |
| Entry level | 175 | 298 | 70 |
| Free-standing mathematics qualification | 14 | 14 | 0 |
| Functional skills | 221 | 221 | 0 |
| Higher level | 81 | 116 | 43 |
| Key skills | 91 | 158 | 74 |
| NVQ | 48 | 69 | 44 |
| Occupational qualification | 11 | 13 | 18 |
| Other general qualification | 664 | 1,100 | 66 |
| QCF | 19,668 | 28,542 | 45 |
| Vocationally related qualification | 557 | 894 | 61 |
| Number of available qualifications by level | | | |
| Entry level | 2,666 | 3,535 | 33 |
| Level 1 | 2,991 | 4,210 | 41 |
| Level 1/2 | 194 | 318 | 64 |
| Level 2 | 6,888 | 10,343 | 50 |
| Level 3 | 6,246 | 9,537 | 53 |
| Level 4 | 1,496 | 2,137 | 43 |
| Level 5 | 708 | 939 | 33 |
| Level 6 | 255 | 323 | 27 |
| Level 7 | 225 | 252 | 12 |
| Level 8 | 7 | 6 | -14 |
| Number of available qualifications by sector subject area | | | |
| Agriculture, horticulture and animal care | 840 | 1,277 | 52 |
| Arts, media and publishing | 1,503 | 2,171 | 44 |
| Business, administration, finance and law | 2,562 | 3,653 | 43 |
| Construction, planning and the built environment | 1,367 | 2,164 | 58 |
| Education and training | 1,207 | 1,632 | 35 |
| Engineering and manufacturing technologies | 2,210 | 3,617 | 64 |
| Health, public services and care | 2,473 | 3,508 | 42 |
| History, philosophy and theology | 46 | 68 | 48 |
| Information and communication technology | 475 | 733 | 54 |
| Languages, literature and culture | 1,070 | 1,500 | 40 |
| Leisure, travel and tourism | 942 | 1,482 | 57 |
| Preparation for life and work | 4,163 | 5,579 | 34 |
| Retail and commercial enterprise | 2,597 | 3,890 | 50 |
| Science and mathematics | 194 | 289 | 49 |
| Social sciences | 27 | 37 | 37 |

Number of certificates awarded

| | April-June 2015 | April-June 2016 | % change on previous year's same quarter | July 2014- June 2015 | July 2015- June 2016 | % change on previous 12 months |
|--|-----------------|-----------------|--|----------------------|----------------------|--------------------------------|
| Overall number of certificates awarded | 1,892,700 | 1,652,750 | -13 | 8,337,000 | 7,870,900 | -6 |
| Number of certificates by type of qualification | | | | | | |
| Basic skills | 0~ | 0 | | 750 | 50 | -95 |
| English for speakers of other languages | 51,350 | 55,100 | 7 | 329,800 | 234,250 | -29 |
| Entry level | 7,900 | 6,900 | -12 | 80,600 | 71,800 | -11 |
| Free-standing mathematics qualification | 550 | 450 | -21 | 35,950 | 37,100 | 3 |
| Functional skills | 299,750 | 236,800 | -21 | 1,059,750 | 932,200 | -12 |
| Higher level | 1,250 | 3,350 | 165 | 5,950 | 12,050 | 102 |
| Key skills | 32,600 | 15,400 | -53 | 107,100 | 80,450 | -25 |
| NVQ | 600 | 250 | -58 | 3,700 | 2,000 | -46 |
| Occupational qualification | 0 | 0~ | | 0~ | 0~ | |
| Other general qualification | 137,300 | 72,350 | -47 | 972,650 | 1,197,150 | 23 |
| QCF | 1,349,100 | 1,248,200 | -7 | 5,634,800 | 5,257,900 | -7 |
| Vocationally related qualification | 12,300 | 13,950 | 13 | 105,950 | 46,000 | -57 |
| Number of certificates by qualification level | | | | | | |
| Entry level | 226,400 | 214,400 | -5 | 977,400 | 941,750 | -4 |
| Level 1 | 465,400 | 395,350 | -15 | 1,918,750 | 1,697,400 | -12 |
| Level 1/ Level 2 | 75,050 | 32,200 | -57 | 505,850 | 851,200 | 68 |
| Level 2 | 787,500 | 692,250 | -12 | 3,454,600 | 2,899,900 | -16 |
| Level 3 | 309,450 | 285,950 | -8 | 1,352,950 | 1,341,300 | -1 |
| Level 4 | 14,600 | 17,650 | 21 | 62,150 | 74,450 | 20 |
| Level 5 | 10,050 | 9,700 | -4 | 47,400 | 45,650 | -4 |
| Level 6 | 2,800 | 4,350 | 55 | 11,400 | 14,150 | 24 |
| Level 7 | 1,350 | 950 | -29 | 6,200 | 4,950 | -20 |
| Level 8 | 100 | 0~ | -97 | 350 | 150 | -56 |
| Number of certificates by sector subject area | | | | | | |
| Agriculture, horticulture and animal care | 29,900 | 24,550 | -18 | 115,250 | 100,400 | -13 |
| Arts, media and publishing | 201,150 | 186,050 | -8 | 842,650 | 821,950 | -2 |
| Business, administration, finance and law | 136,400 | 112,100 | -18 | 586,550 | 490,400 | -16 |
| Construction, planning and the built environment | 65,100 | 65,700 | 1 | 268,550 | 280,450 | 4 |
| Education and training | 20,650 | 20,200 | -2 | 93,400 | 88,700 | -5 |
| Engineering and manufacturing technologies | 94,450 | 82,150 | -13 | 402,450 | 379,250 | -6 |
| Health, public services and care | 293,750 | 282,600 | -4 | 1,189,100 | 1,165,900 | -2 |
| History, philosophy and theology | 3,950 | 1,450 | -64 | 29,250 | 28,750 | -2 |
| Information and communication technology | 86,250 | 107,750 | 25 | 433,900 | 445,150 | 3 |
| Languages, literature and culture | 42,850 | 40,600 | -5 | 464,500 | 593,300 | 28 |
| Leisure, travel and tourism | 101,700 | 86,850 | -15 | 420,950 | 396,500 | -6 |
| Preparation for life and work | 626,750 | 497,300 | -21 | 2,509,100 | 2,227,900 | -11 |
| Retail and commercial enterprise | 154,900 | 133,500 | -14 | 658,400 | 563,050 | -14 |
| Science and mathematics | 34,850 | 11,900 | -66 | 316,400 | 279,550 | -12 |
| Social sciences | 0~ | 50 | | 6,400 | 9,650 | 51 |
| Number of certificates by country | | | | | | |
| England | 1,651,550 | 1,466,900 | -11 | 7,533,100 | 7,117,700 | -6 |
| Wales | 164,700 | 115,100 | -30 | 586,400 | 557,000 | -5 |
| Northern Ireland | 76,450 | 70,750 | -7 | 217,500 | 196,200 | -10 |

Note: All figures are rounded to the nearest 50. Figures are rounded independently and may not sum to the total.

Analysis

This section presents figures on the number of qualifications that are available for students to enrol on (even if only for one day during the quarter), and those that may have expired (where students can no longer enrol) but remain active until the final certificate has been issued.

Qualifications available

This quarter, the number of available qualifications increased by 46% compared to the previous quarter, from 21,676 to 31,600 (see the table of key statistics on page 7). The number of available qualifications increased or stayed the same for all kinds of qualifications except for Level 8 qualifications, which decreased by 1. The change in the number of available qualifications resulted from 10,266 new qualifications becoming available (of which 9,877 were new Welsh qualifications¹¹ and 389 were new English and/or Northern Irish qualifications) and 342 qualifications expiring (most of these being classified as Qualifications and Credit Framework (QCF) qualifications (315)). Two thirds (66%) of the qualifications that expired had no certifications in the 12 months to the end of June 2016. The 10,266 newly available qualifications are delivered by 125 awarding organisations.

Table 1 of the appendix presents the number of available qualifications over the past five years, broken down by type.

Awarding organisations

The number of recognised awarding organisations (157) offering regulated qualifications is slightly more than in the previous quarter (155). The number of organisations with available qualifications this quarter and certificates awarded in the last 12 months was 152. This is similar to the number of awarding organisations offering regulated qualifications that issued certificates in quarter 1 of 2016 (150).

Certificates issued

There was a decrease of 13% in the total number of certificates issued compared with the same quarter of 2015 (from 1.9 million to 1.7 million). The number of certificates awarded this quarter is the lowest for quarter 2 (April to June) in the period from 2011.

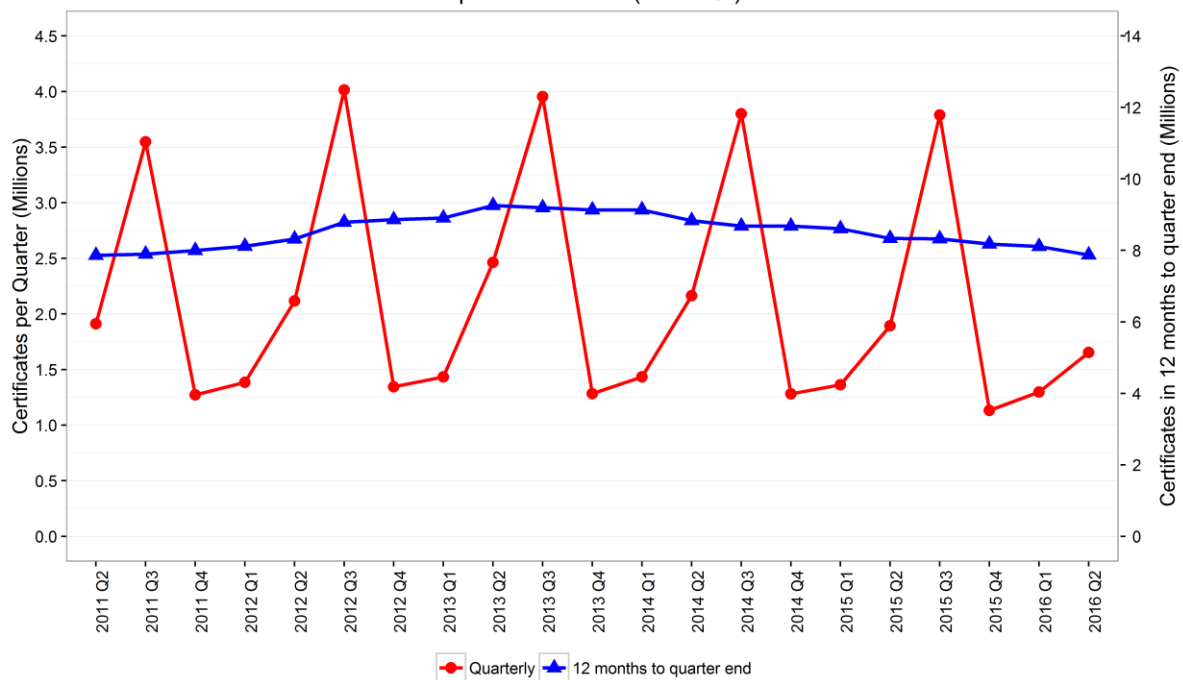
Figure 1 illustrates that there was a gradual increase in the number of certificates awarded between 2011 and 2013, but over the past 3 years there has been a decline

¹¹ As explained on p.6, this is due to the fact that Welsh qualifications are now recorded separately, meaning that all Welsh qualifications are considered to be 'new' in the current report.

back to the level of 2011. The overall number of certificates issued has risen from 7.9 million in the 12 months to the end of June 2011 to 8.4 million in the 12 months to the end of June 2015 and 7.9 million in the 12 months to the end of June 2016. The figure for the 12 months to the end of June 2016 is therefore similar to that from five years earlier, but a decrease of 6% compared to the same period in 2015.

The number of certificates issued in each quarter since April to June 2011, and in the 12-month period to each quarter end, is presented in table 2 of the appendix.

Figure 1: Number of certificates issued, April - June 2011 (2011 Q2) to April - June 2016 (2016 Q2)



Certificates by country

This quarter, 89% of all certificates issued were in England, 7% were in Wales and 4% were in Northern Ireland (see figure 2). This distribution is similar to the same quarter of 2015.

Figure 2: Number of certificates issued in the quarter and in the 12 months to the end of June 2016 by geographical area (with % change on previous year's same period)

| Country | Proportion of total | April-June 2016 | % change on previous year's same quarter | 12 months to June 2016 | % change in 12 months |
|--|---------------------|------------------|--|------------------------|-----------------------|
| England | 89 | 1,466,900 | -11 | 7,117,700 | -6 |
| Wales | 7 | 115,100 | -30 | 557,000 | -5 |
| Northern Ireland | 4 | 70,750 | -7 | 196,200 | -10 |
| Total number of certificates issued | 100 | 1,652,750 | -13 | 7,870,900 | -6 |

There was a decrease in the number of certificates awarded this quarter in all three countries compared with the same quarter in 2015. Over the 12 months to June 2016, there was a decrease of 6% in England, 5% in Wales and 10% in Northern Ireland.

Certificates by type of qualification

Figure 3 presents the number of certificates issued by qualification type in this quarter and during the 12 months to the end of June 2016. Table 3 of the appendix presents the number of certificates issued each quarter since April to June 2011 by type of qualification. Most certificates issued this quarter were for QCF qualifications (1,248,200 certificates out of 1,652,750, or 76%). Since the QCF was introduced in 2010, the number of certificates meeting QCF requirements has grown rapidly. This growth followed the Skills Funding Agency's preference to mainly fund qualifications on the QCF.

The number of certificates awarded for QCF qualifications decreased by 7% this quarter compared with the same quarter of 2015. This is the ninth consecutive quarter where the number of certificates awarded for QCF qualifications has decreased, compared to the same quarter the year before. Ofqual withdrew the QCF requirements at the beginning of Q3 2015, and the SFA withdrew its preference for funding them.

The number of certificates issued for higher level qualifications increased by 165% compared to the same quarter in 2015 (from 1,250 to 3,350). Most of this change was due to an increase of in the number of higher level certificates issued by the Chartered Institute of Marketing (from 450 to 2,650).

This is the first quarter since Q1 2015 where the number of certificates issued for ESOL qualifications have increased compared to the same quarter in the previous

year. This is after the Skills Funding Agency stopped funding the existing ESOL qualifications in December 2014. From January 2015, funding for ESOL qualifications is only available when a student completes a QCF ESOL Skills for Life qualification.¹²

Figure 3: Number of certificates issued in this quarter and in the 12 months to the end of June 2016 by qualification type (with % change on previous year's same period)

| Qualification type | April-June 2016 | % change on same qtr 2015 | 12 months to June 2016 | % change in 12 months |
|---|------------------|---------------------------|------------------------|-----------------------|
| Basic skills | 0 | | 50 | -95 |
| ESOL | 55,100 | 7 | 234,250 | -29 |
| Entry level | 6,900 | -12 | 71,800 | -11 |
| Free-standing mathematics qualification | 450 | -21 | 37,100 | 3 |
| Functional skills | 236,800 | -21 | 932,200 | -12 |
| Higher level | 3,350 | 165 | 12,050 | 102 |
| Key skills | 15,400 | -53 | 80,450 | -25 |
| NVQ | 250 | -58 | 2,000 | -46 |
| Occupational qualification | 0~ | | 0~ | |
| Other general qualification | 72,350 | -47 | 1,197,150 | 23 |
| QCF | 1,248,200 | -7 | 5,257,900 | -7 |
| Vocationally related qualification | 13,950 | 13 | 46,000 | -57 |
| Total number of certificates | 1,652,750 | -13 | 7,870,900 | -6 |

Key: ESOL: English for speakers of other languages; NVQ: National vocational qualification; QCF: Qualifications and credit framework.

Certificating awarding organisations

Over the last 12 months, 152 awarding organisations issued certificates, representing 97% of the awarding organisations with available qualifications.

Figure 4 shows the ten awarding organisations that issued the most certificates this quarter, along with figures for the 12 months to quarter end. The combined total number of certificates issued by these ten organisations represents 66% of all awards during this quarter (1.08 million out of 1.65 million certificates).

¹² www.gov.uk/government/publications/esol-qualifications-interim-arrangements/new-qualifications-and-credit-framework-english-for-speakers-of-other-languages-skills-for-life-qualifications-funding-arrangements-for-2014-to-2015

Figure 4: Number of certificates issued in this quarter and in the 12 months to the end of June 2016 for the ten awarding organisations with the most certificates (with % change on previous year's same period)

| Awarding organisation | April-June 2016 | % change on same qtr 2015 | 12 months to June 2016 | % change in 12 months |
|---|------------------|---------------------------|------------------------|-----------------------|
| Pearson Education Ltd | 306,500 | -28 | 1,675,100 | -16 |
| City and Guilds of London Institute | 286,250 | -19 | 1,215,150 | -14 |
| OCR | 87,050 | -14 | 425,950 | -19 |
| NCFE | 62,750 | -19 | 316,600 | -9 |
| Chartered Institute of Environmental Health | 60,150 | -19 | 235,950 | -18 |
| BCS, The Chartered Institute for IT | 59,900 | 122 | 154,750 | 78 |
| Cambridge English Language Assessment | 59,550 | -19 | 279,400 | 20 |
| Trinity College London | 59,300 | 32 | 222,550 | 25 |
| Highfield Awarding Body for Compliance | 57,050 | -19 | 242,350 | -8 |
| Qualsafe Awards | 44,750 | 17 | 167,100 | 17 |
| Total number of certificates for the 10 awarding organisations | 1,083,300 | -16 | 4,934,950 | -10 |

Seven of the ten awarding organisations that issued the most certificates recorded decreases this quarter compared with the same quarter in 2015.

- Pearson Education Ltd had a decrease of 28% in the number of certificates awarded this quarter (from 427,350 in Q2 2015 to 306,500 in the current quarter). Most of this decrease is due to the decrease in the number of certificates awarded in QCF (232,434 to 169,997) and other general qualifications (78,257 to 35,522).
- There was an increase of 122% in the number of certificates awarded this quarter by BCS (from 27,050 in Q2 2015 to 59,900 in the current quarter). Most of this change is due to an increase in the number of certificates issued for Level 2 QCF qualifications (18,215 to 54,380).
- The 32% increase in certificates awarded this quarter by Trinity College London (from 44,850 in Q2 2015 to 59,300 in the current quarter) is due to an increase in the number of certificates issued for ESOL (9,679 to 21,064) and QCF qualifications (35,149 to 38,216).
- The 17% increase in certificates awarded this quarter by Qualsafe Awards (from 38,350 in Q2 2015 to 44,750 in the current quarter) is mostly due to an increase in the number of certificates issued for qualifications in the sub sector of health and social care (36,250 to 42,000).

The 50 organisations that awarded the highest numbers of qualifications this quarter are shown in table 4 of the appendix.

Certificates by level of qualification

This section presents figures on the number of certificates issued this quarter and during the 12 months to the end of June 2016, by level of qualification. Each regulated qualification has a level between Entry level and Level 8, which indicates the broad level of demand of the qualification.¹³

Figure 5 gives a breakdown of the number of certificates by level of qualification.

Figure 5: Number of certificates issued in this quarter and in the 12 months to the end of June 2016 by qualification level (with % change on previous year's same period)

| Qualification type | April-June 2016 | % change on same qtr 2015 | 12 months to June 2016 | % change in 12 months |
|-------------------------------------|------------------|---------------------------|------------------------|-----------------------|
| Entry level | 214,400 | -5 | 941,750 | -4 |
| Level 1 | 395,350 | -15 | 1,697,400 | -12 |
| Level 1/ Level 2 | 32,200 | -57 | 851,200 | 68 |
| Level 2 | 692,250 | -12 | 2,899,900 | -16 |
| Level 3 | 285,950 | -8 | 1,341,300 | -1 |
| Level 4 | 17,650 | 21 | 74,450 | 20 |
| Level 5 | 9,700 | -4 | 45,650 | -4 |
| Level 6 | 4,350 | 55 | 14,150 | 24 |
| Level 7 | 950 | -29 | 4,950 | -20 |
| Level 8 | 0~ | | 150 | -56 |
| Total number of certificates | 1,652,750 | -13 | 7,870,900 | -6 |

The number of certificates issued for Level 1 and Level 2 qualifications has declined year-on-year for the twelfth consecutive quarter (compared to the same quarter the year before). The decline in both levels this quarter, compared to the same quarter in 2015, is partly because of a decrease in the number of certificates awarded in Functional skills (from 129,150 to 103,800 for level 1 and from 109,250 to 77,200 for level 2) and QCF (from 299,400 to 260,950 for level 1 and from 614,100 to 570,750 for level 2).

Compared to the same quarter last year, there was a decrease of 57% in the number of certificates awarded for Level 1/Level 2 qualifications (from 75,050 to 32,200). However, there was a very large increase in the number of Level 1/Level 2 qualifications awarded during the last 12 months compared to 2015, reflecting the switch by many schools to Level 1/2 certificates instead of GCSEs.

The number of certificates awarded for qualifications at Level 4 and above increased by 13% this quarter compared with the same quarter in 2015 (from 28,950 to

¹³ Further details on comparing qualification levels are available on Ofqual's website: www.gov.uk/what-different-qualification-levels-mean

32,650). The number of certificates awarded increased mainly in the area of business, administration and law (from 14,750 to 17,750).

Table 5 of the appendix presents the number of certificates awarded by qualification level in each quarter from January to March 2011 to this quarter.

Certificates by qualification

This quarter 9,047 qualifications had certificates issued, representing 29% of all available qualifications. This is less than the same quarter in 2015, in which certificates were issued for 43% of available qualifications. This decrease is likely due to changes in the way Welsh qualifications are recorded. The 50 qualifications with the most certificates awarded this quarter are listed in table 6 of the appendix.

The ten qualifications with the highest number of certificates issued this quarter and in the 12 months to the end of June 2016 are shown in figure 6.

Figure 6: The ten qualifications with the highest number of certificates awarded this quarter and in the 12 months to the end of June 2016 (figures for the 12 months to the end of June 2015 shown for comparison)

| Qualification | Number of certificates | | | | | |
|--|------------------------|-----------------|------------------|-----------------------------------|-----------------------------------|--------------------|
| | April-June 2015 | April-June 2016 | % change quarter | 12 months to the end of June 2015 | 12 months to the end of June 2016 | % change 12 months |
| BCS Level 2 ECDL Certificate in IT Application Skills | 11,900 | 50,650 | 326 | 26,250 | 117,200 | 346 |
| CIEH Level 2 Award in Food Safety in Catering (QCF) | 35,300 | 29,100 | -18 | 140,600 | 116,000 | -18 |
| Pearson Edexcel Functional Skills qualification in Mathematics at Level 1 | 30,850 | 25,300 | -18 | 74,450 | 70,100 | -6 |
| QA Level 2 Award in Emergency First Aid at Work (QCF) | 20,900 | 23,500 | 12 | 77,800 | 88,900 | 14 |
| City & Guilds Functional Skills qualification in Mathematics at Level 1 | 27,650 | 17,350 | -37 | 73,100 | 56,850 | -22 |
| TCL Entry Level Certificate in ESOL International - Speaking and Listening (Entry 3) | 7,500 | 16,900 | 125 | 38,500 | 60,200 | 56 |
| FAA Level 2 Award in Emergency First Aid at Work (QCF) | 14,150 | 15,350 | 8 | 55,500 | 58,150 | 5 |
| Cambridge English Level 1 Certificate in English (IELTS 5.5-6.5) (ESOL) | 14,900 | 14,450 | -3 | 61,600 | 45,400 | -26 |
| Pearson Edexcel Functional Skills qualification in English at Level 1 | 15,950 | 13,300 | -17 | 63,000 | 57,050 | -9 |
| City & Guilds Functional Skills qualification in English at Level 1 | 20,050 | 12,700 | -37 | 73,850 | 61,300 | -17 |

The qualification with the most certificates issued, and the largest increase, this quarter was the BCS level 2 ECDL certificate in IT application skills with 50,650 certificates awarded. This is an increase of 326% compared to the same quarter of 2015 when there were 11,900 certificates awarded (possibly because this qualification has recently been listed in performance tables for 2018¹⁴). Four of the qualifications on the list were QCF qualifications, and four were functional skills.

¹⁴ <http://www.bcs.org/content/conWebDoc/55511>

Certificates by sector subject area of qualification

Regulated qualifications are allocated by the awarding organisations to one of 15 sector subject areas. This section presents figures on the number of certificates issued this quarter and during the 12 months to the end of June 2016, by the sector subject area of the qualification.

Figure 7 shows the sectors ordered by size, in terms of the number of certificates issued this quarter, with the largest sector subject area first.

The greatest number of certificates was issued in the Preparation for Life and Work sector (497,300, representing 30% of the total issued this quarter and 28% of the total issued in the 12 months to the end of June 2016). However, this sector had the largest decrease in the actual number of certificates awarded this quarter compared to the same quarter in 2015, with a 21% decrease (from 626,750 certificates to 497,300). The majority of this decrease is for certificates in the foundations for learning and life sub-sector (from 570,600 to 454,000).

The sector with the largest increase in the actual number of certificates awarded this quarter compared with the same quarter in 2015 was information and communication technology (from 86,250 to 107,750). This was due to an increase in the ICT for users sub-sector (from 56,650 to 86,450).

The largest percentage decrease was in science and mathematics (from 34,850 to 11,900) and history, philosophy and theology (from 3,950 to 1,450). Most of the decrease in the science and maths sector this quarter is due to the decrease in the number of certificates awarded by Pearson Education Ltd (from 32,800 to 10,300).

Figure 7: Number of certificates by sector subject area of qualification in the quarter April-June 2016 and in the 12 months to the end of June 2016

| Sector subject area | April-June 2016 | % change on same qtr. 2015 | 12 months to the end of June 2016 | % change for 12 months |
|--|------------------|----------------------------|-----------------------------------|------------------------|
| Preparation for Life and Work | 497,300 | -21 | 2,227,900 | -11 |
| Health, Public Services and Care | 282,600 | -4 | 1,165,900 | -2 |
| Arts, Media and Publishing | 186,050 | -8 | 821,950 | -2 |
| Retail and Commercial Enterprise | 133,500 | -14 | 563,050 | -14 |
| Languages, Literature and Culture | 40,600 | -5 | 593,300 | 28 |
| Business, Administration, Finance and Law | 112,100 | -18 | 490,400 | -16 |
| Engineering and Manufacturing Technologies | 82,150 | -13 | 379,250 | -6 |
| Information and Communication Technology | 107,750 | 25 | 445,150 | 3 |
| Leisure, Travel and Tourism | 86,850 | -15 | 396,500 | -6 |
| Construction, Planning and the Built Environment | 65,700 | 1 | 280,450 | 4 |
| Education and Training | 20,200 | -2 | 88,700 | -5 |
| Science and Mathematics | 11,900 | -66 | 279,550 | -12 |
| Agriculture, Horticulture and Animal Care | 24,550 | -18 | 100,400 | -13 |
| History, Philosophy and Theology | 1,450 | -64 | 28,750 | -2 |
| Social Sciences | 50 | | 9,650 | 51 |
| Total number of certificates | 1,652,750 | -13 | 7,870,900 | -6 |

Table 7 of the appendix presents the number of certificates awarded in vocational qualifications by sector subject area by quarter from April to June 2011 to this quarter. Table 8 of the appendix gives a more detailed breakdown of the second-tier sector subject areas for these certificates.

Certificates issued in England, Wales and Northern Ireland

The overall number of certificates awarded has decreased for all three countries for the 12-month period to June 2016 (see figure 2).

Figure 8, shows that the QCF qualifications dominate in England (68%), Wales (50%) and Northern Ireland (73%). Compared to the same period in 2015, these numbers have decreased in England and Northern Ireland, but have increased in Wales.

The number of certificates issued for functional skills qualifications in Wales increased by 9% in the 12 months to the end of June 2016 compared with the same period in 2015. For the same period, the number of certificates awarded for functional skills in England decreased by 12% (most likely due to recent changes in policy around GCSE English and mathematics resits) and in Northern Ireland by 20% (although the number of functional skills certificates issued in Northern Ireland is very small, because learners in Northern Ireland tend to use Essential Skills qualifications).

Figure 8: Number of certificates in the 12 months to the end of June 2016, by country and type of qualification

| Qualification type | England | | 12 month % change | | Wales | | 12 month % change | | Northern Ireland | | 12 month % change | |
|---|------------------|------------|-------------------|------------|------------|------------|-------------------|------------|------------------|------------|-------------------|------------|
| | Number | % of total | Number | % of total | Number | % of total | Number | % of total | Number | % of total | Number | % of total |
| Basic skills | 50 | 0 | 0 | -94 | 0 | 0 | 0 | 0 | 0 | 0 | 0 | 0 |
| English for speakers of other languages | 225,450 | 3 | 7,050 | -30 | 1 | 68 | 1,700 | 1 | -58 | | | |
| Entry Level | 53,450 | 1 | 12,550 | -10 | 2 | -12 | 5,850 | 3 | -18 | | | |
| Free-standing mathematics qualification | 36,900 | 1 | 200 | 3 | 0 | -28 | 0 | 0 | | | | |
| Functional skills | 920,150 | 13 | 11,900 | -12 | 2 | 9 | 150 | 0 | -20 | | | |
| Higher level | 11,300 | 0 | 450 | 97 | 0 | 379 | 300 | 0 | 106 | | | |
| Key skills | 8,100 | 0 | 71,500 | -45 | 13 | -17 | 800 | 0 | -86 | | | |
| NVQ | 1,900 | 0 | 50 | -44 | 0 | -66 | 0 | 0 | | | | |
| Occupational qualification | 0 | 0 | 0 | 0 | 0 | 0 | 0 | 0 | | | | |
| Other general qualification | 980,900 | 14 | 173,900 | 39 | 31 | -19 | 42,300 | 22 | -16 | | | |
| QCF | 4,837,900 | 68 | 276,900 | -8 | 50 | 11 | 143,100 | 73 | -3 | | | |
| Vocationally related qualification | 41,550 | 1 | 2,500 | -57 | 0 | -58 | 2,000 | 1 | -16 | | | |
| Total number of certificates awarded | 7,117,700 | 100 | 557,000 | -6 | 100 | -5 | 196,200 | 100 | -10 | | | |

Notes:

All figures are rounded to the nearest 50, values less than 25 will appear as zero. Figures have been rounded independently so may not sum to the total.

The number of certificates issued for 'other general' qualifications for the 12 months to the end of June 2016 represents 14% of the total in England, 31% in Wales and 22% in Northern Ireland. The number of certificates awarded is rising in England for this category but shows a decrease in Northern Ireland and Wales¹⁵.

Tables 9 to 11 in the appendix present the 50 organisations that awarded the most qualifications in England, Wales and Northern Ireland, respectively, during July 2015 to June 2016.

¹⁵ Direct comparisons of 'other general' qualifications between England, Wales and Northern Ireland are difficult as this category includes Essential Skills, which are the Wales and Northern Ireland equivalent of functional skills.

Background notes

This release presents data on available regulated vocational and other qualifications and the number of certificates issued. It does not include the Advanced Extension Award, GCSEs, AS and A levels qualifications, project and principal learning. The number of certificates awarded for these qualifications can be found on the Joint Council for Qualifications website.¹⁶

The data cover regulated qualifications in England, Wales and Northern Ireland, whether regulated by Ofqual, Qualifications Wales or CCEA (Northern Ireland regulator). The figures cover both the April to June 2016 quarter and the 12-month period to the end of June 2016.

This document is in line with Ofqual's statistics policies¹⁷ and the *Code of Practice for Official Statistics*.¹⁸

A glossary of terms is available in the next section to help you interpret this release.

Data sources

Information on qualifications is taken from Ofqual's Register of Regulated Qualifications¹⁹. Data on available qualifications – covering title, type, awarding organisation, sector subject area and level – are taken from the Register and awarding organisations send Ofqual the number of certificates awarded. Further information on the administrative sources is available within Ofqual's statistical policies.

This release shows the number of awards broken down by awarding organisation, sector subject area, type of qualification, level of qualification and country.

Limitations of data

Data are collected at the earliest point available, which is the first day of the next reporting period. This reduces the time between the activity and reporting on the activity.

¹⁶ www.jcq.org.uk/examination-results

¹⁷ <https://www.gov.uk/government/publications/ofquals-statistics-policies-and-procedures>

¹⁸ <https://www.statisticsauthority.gov.uk/monitoring-and-assessment/code-of-practice>

¹⁹ <http://register.ofqual.gov.uk>

The main source of potential error²⁰ is in the information provided by awarding organisations. Ofqual cannot guarantee that the number of certificates submitted is correct and there may be systematic bias when the information is sent, although awarding organisations are expected to provide the correct data. Ofqual compares the data over time and checks for systematic issues. Summary data are then sent back to awarding organisations to be checked and confirmed. The figures reported in this release reflect the certificates issued by awarding organisations at the time of data collection.

Quality assurance procedures are carried out as explained in the *Quality Assurance Framework for Statistical Publication* and the *Data Audit Framework*²¹ to ensure the accuracy of the data and to challenge or question it where necessary. Ofqual continually manages this process by:

- ensuring that data suppliers are clear about what is required of them, in part achieved by consulting providers during the initial design and any subsequent change phases;
- reminding all suppliers (if appropriate) that, as a condition of being regulated, all data must be completely accurate;
- being alert to unexpected changes in the data submitted by comparing individual returns over time from the same supplier;
- actively challenging any unexpected results with data suppliers;
- seeking explanations for changes and trends in the data;
- checking the data provided against other data either within Ofqual or available from third parties such as the Department for Education's national pupil database;²²

²⁰ *Statement of Administrative Sources* includes information about the potential sources of error and how Ofqual mitigates these: <https://www.gov.uk/government/publications/ofquals-statistics-policies-and-procedures>

²¹ <https://www.gov.uk/government/publications/ofquals-statistics-policies-and-procedures>

²² The national pupil database contains detailed information about pupils in schools and colleges in England.

- having a proportionate data auditing framework in place allowing for auditing of suppliers, information collection, collation and delivery processes as necessary, using a wide range of tools from questionnaires to on-site process audits.

Publication may be deferred if the statistics are not considered fit for purpose.

Comparisons in this release are mainly made with data from the same quarter of the previous year and the 12-month period up to the end of the same quarter of the previous year. This is because of seasonal changes in the number of certificates issued over the year.

After data collection, the trends are interpreted by a group of colleagues from Ofqual who are aware of the latest changes in policies. Before being released, the publication has to be signed off by Ofqual's Head of Profession for Statistics who confirms the quality of the release.

Geographical coverage

In this release, Ofqual presents data on certificates issued for all regulated qualifications (excluding GCSEs, AS and A levels, Advanced Extension Award and the Diploma²³) in England, Wales and Northern Ireland during the January to March 2016 quarter.

Statistics for Scotland are on the Scottish Qualifications Authority website²⁴.

Ofqual started to collect data for England, Wales and Northern Ireland individually in 2011.

Revisions

Once published, data on the number of certificates issued for any qualification are not usually subject to revision, although subsequent releases may be revised to insert late data or to correct an error. Qualifications may also be re-categorised to a different type, level, sector subject area or awarding organisation. In some cases, data may be amended to reflect the new categorisation.

In this release, previous years' figures from three awarding organisations (City and Guilds of London Institute, WJEC-CBAC, and Counselling and Psychotherapy Central Awarding Body) have been revised. The table of revision, published

²³ Data for GCSEs, AS and A levels can be found on the Joint Council for Qualifications website: www.jcq.org.uk/examination-results

²⁴ The Scottish Qualifications Authority is the national accreditation and awarding organisation in Scotland: www.sqa.org.uk/sqa/64717.4239.html

alongside this publication, shows the changes for each quarter by level, type of qualification and sector subject area.

Completeness of the data

Awarding organisations send data to Ofqual each quarter. Any awarding organisation that does not return a complete set of data within the collection period is contacted to make sure that the data are as complete as possible. For this quarter, Ofqual received data from all the awarding organisations that were in a position to award qualifications.

Confidentiality

To ensure confidentiality of the published accompanying data in accordance with Ofqual's *Statement on Confidentiality*²⁵, the number of certificates awarded has been rounded to the nearest five. If the value is less than five, it is represented as 0~. A 0 represents zero achievements.

Rounding

In accordance with Ofqual's *Rounding Policy*²⁶, figures in the commentary and tables for the number of certificates issued are rounded to the nearest 50 for ease of use. As a result of rounded figures, the percentages shown in any pie charts may not necessarily add up to 100. The raw data published alongside this publication are rounded to the nearest five to protect confidentiality.

The numbers of qualifications have been left as exact figures because there is no issue with confidentiality and also because some of the numbers are so small that it aids the user to have actual figures.

Users of these statistics

This publication attracts a wide variety of users who use the statistics in various ways:

- Internal (Ofqual) users use the statistics to monitor the market, to target resources and for input into analysis and reports.
- Central government officials use the statistics for policy implementation and ministerial briefings about government-funded provision and to draw on for their own publications.

²⁵ <https://www.gov.uk/government/publications/ofquals-statistics-policies-and-procedures>

²⁶ <https://www.gov.uk/government/publications/ofquals-statistics-policies-and-procedures>

- Awarding organisations use the statistics and underlying data as market intelligence, to monitor market share and to understand more about their competitors and product availability.
- Sector skills councils and other employer groups use the statistics to understand training uptake within their sectors and to assist them in understanding how the qualifications are meeting employer demand.
- Other users, including colleges and training providers, have varying needs, from using the information to assist in research projects to focusing on individual qualifications within their industry.

Users from central government and internal users focus on the detailed published data, as do some awarding organisations. Others draw on the aggregate official statistics and commentary to provide context.

Related statistics and publications

There are a number of related statistical releases and publications:

- The *Statistical First Release: GCSE and Equivalent Results in England 2014/15*²⁷, published by the Department for Education, covers students' achievements in GCSEs and equivalent regulated qualifications in schools at the end of Key Stage 4.
- The *Statistical First Release: A Level and Other Level 3 Results in England, Academic Year 2014 to 2015*²⁸ covers achievements for 16 to 18 year olds at schools and colleges in all Level 3 qualifications. These releases can be used to add context to the trends seen in Level 2 and Level 3 AS/A level and GCSE equivalent qualifications.
- The quarterly *Statistical First Release*²⁹, published by the Department for Business, Innovation & Skills, reports on apprenticeship volumes that cover statistics on adult (19+) government-funded participation, achievement and

²⁷ *Statistical First Release: GCSE and Equivalent Results in England 2013/14 (Provisional)*:
<https://www.gov.uk/government/statistics/provisional-gcse-and-equivalent-results-in-england-2014-to-2015>

²⁸ <https://www.gov.uk/government/statistics/provisional-gcse-and-equivalent-results-in-england-2014-to-2015>

²⁹ www.gov.uk/government/statistics/learner-participation-outcomes-and-level-of-highest-qualification-held

success rates for further education, and apprenticeships participation and achievements for all ages (16+) in England. It also shows figures on certificates issued for vocational qualifications in the UK, as collected by Ofqual and through the National Vocational Qualifications Database.

Useful information

The data behind these statistics are published alongside this statistical release at 9.30am on the day of release³⁰. The data set is not revised until the next publication is released. You can find the publication schedule for the next releases on the GOV.UK website³¹.

The Register gives information on regulated qualifications and recognised awarding organisations in England, Wales and Northern Ireland³².

User feedback

Ofqual has recently asked its user groups for feedback on this publication. Here is a summary of the improvements suggested, organised into those that have already been put in place and those that Ofqual will not be able to accommodate. Ahead of each publication, user feedback is reviewed to determine the content that should be included in the publication.

Ofqual has already put in place a number of suggestions:

- Round the raw data to the nearest five – rounding is needed for confidentiality. Following feedback from users that they needed the numbers of certificates to be as close to the actual figures as possible, rounding was reduced to the nearest five.
- Keep the breakdown by type of qualifications – although the majority of qualifications and certificates were for qualifications on the QCF, users still found the detailed breakdown useful.
- Provide more analysis outside the ten awarding organisations with the most certificates – comment will be made where an awarding organisation has had a

³⁰ www.gov.uk/government/statistical-data-sets/vocational-qualifications-dataset

³¹ www.gov.uk/government/statistics/announcements?utf8=%E2%9C%93&organisations%5B%5D=ofqual

³² <http://register.ofqual.gov.uk>

significant change in certifications in relation to all certifications. Tables and published data give details on all awarding organisations.

- Provide more analysis of the major growth areas.
- Present the number of certificates awarded by second-tier sector subject area.
- Include a table in the appendix covering the number of available qualifications by qualification level.

Ofqual will be unable to implement the following suggestions:

- Present data on graded qualifications – Ofqual does not collect information on certifications by grade achieved.
- Present data on the progression between award, certificate and diploma – Ofqual does not collect the necessary candidate-level data.
- Present the number of registrations as well as certificates – Ofqual collects the number of registrations from awarding organisations on a voluntary basis and does not have complete information.
- Present shared unit data – the data needed to carry out this analysis are not currently available.
- Present data broken down by regions within the UK – regional information is not mandatory as part of the data collection process and would add considerable burden to some awarding organisations.
- Present more information for the smaller awarding organisations on the state of the market – there are too many organisations to cover within the commentary but Ofqual does provide raw data for each qualification to enable users to do their own analysis.
- Present the breakdown of key awarding organisations in each sector based on the number of certificates – this is already published by Ofqual in the Annual Qualification Market Report.

The Skills Funding Agency's Individual Learner Record Database³³ and the Department for Education's National Pupil Database provide data on graded

³³ The Individualised Learner Record Database is the primary data collection on funded further education and work-based learning in England.

qualifications and data broken down by region. The latter also provides data on progression between award, certificate and diploma, and number of registrations.

Glossary of terms

A levels – also known as General Certificates of Education, are currently available as advanced level qualifications (A levels) and advanced subsidiary (AS). They are the main qualifications that young people use to gain entry to university.

Accreditation – a process by which Ofqual reviews and confirms that proposed qualifications meet specific criteria before they can be offered. Ofqual no longer requires all regulated qualifications to have been accredited.

Accredited qualification – this is an old term that is sometimes used to mean ‘regulated qualification’ (see below). Ofqual now allows awarding organisations to submit most qualifications for regulation without having been accredited, so it is strictly incorrect to refer to regulated qualifications as accredited.

Active qualification – a qualification where a certificate has been awarded.

Available qualification – a qualification eligible for an award or a qualification that has made an award even if it is no longer eligible (no longer available for students to enrol on). For the purpose of this release, a qualification is available until the certification end date or if an award has been certified during the reporting period.

Awarding organisation – an organisation recognised by Ofqual to develop, deliver and award qualifications.

Certificate/certification – a formal acknowledgement of a student’s achievement. This will be any award that is not graded as U, absent or X (fail).

Certification end date – the last date on which a student may be issued with a certificate of achievement for the qualification.

GCSEs – General Certificates of Secondary Education are the main school-leaving qualifications in England, Wales and Northern Ireland. They are available in a range of subjects and can be studied alongside other qualifications. They are generally sat by 15 to 18 year olds in schools and colleges but are open to anyone who wants to gain a qualification.

Level – qualifications are assigned a level from entry level, then Level 1 through to Level 8 (equivalent to a doctorate), indicating the broad level of demand of the qualification.

National vocational qualifications (NVQs) – work-related, competence-based qualifications that cover a broad range of industry sectors and occupations, and are delivered in a workplace setting.

Other general qualifications – qualifications that assess a particular subject area, such as music or art, other than GCSEs, AS and A levels. These qualifications are not directly work related but may support career development. They are often graded. The category also includes qualifications at Level 1/Level 2 certificates.

Qualifications and Credit Framework (QCF) – a set of regulatory rules for vocational qualifications that Ofqual has withdrawn from October 2015 in England and Northern Ireland.

Quarter – refers to calendar quarters. Quarter 1 (Q1) refers to January – March, quarter 2 (Q2) to April – June, quarter 3 (Q3) to July – September, and quarter 4 (Q4) to October to December.

Recognition – the formal process that Ofqual operates, whereby awarding organisations that wish to offer regulated qualifications can demonstrate that they meet Ofqual’s recognition criteria.³⁴ The scope of recognition is the qualifications or types of qualification that the awarding organisation is recognised to offer, which may be quite narrow or very broad. Recognition is a robust gateway into the regulated marketplace. Only applicants who meet the criteria in full will be recognised. Recognised organisations have to meet Ofqual’s Conditions of Recognition on an ongoing basis.

Register – the Register of Regulated Qualifications contains details of recognised awarding organisations and the regulated qualifications they offer.

Regulated qualification – a qualification that is offered by a recognised awarding organisation within the scope of its recognition. Regulated qualifications must be added to the Register of qualifications and have to meet Ofqual’s requirements. Some qualifications are subject to an accreditation requirement and have to be checked by the regulator before they can be offered as regulated qualifications.

Vocationally related qualifications – work-related, competence-based qualifications designed to give students the skills and knowledge they need to do a job. They are related to employment but, unlike NVQs, do not necessarily require a work placement.

³⁴ www.gov.uk/awarding-organisations-understanding-our-regulatory-requirements

Your feedback

Ofqual is conducting a rolling series of online surveys to help statistical releases meet your needs.

Ofqual would especially like to invite you to take part in the online survey for this release.

<https://www.surveygizmo.com/s3/1473109/vocational-and-other-qualifications-quarterly-v1>

It will take about ten minutes to complete. Your responses will remain entirely confidential in any reports published about the survey.

If you would like to take part in the survey, have any questions or would prefer a paper or large-type copy, please contact us at: statistics@ofqual.gov.uk.

Appendix

| | |
|--------------------------|---|
| Table 1 | Number of regulated vocational and other qualifications, from April to June 2011 to April to June 2016 |
| Table 2 | Total number of certificates issued in vocational and other qualifications, from April to June 2011 to April to June 2016, showing certificates issued per quarter and per 12 months to quarter end |
| Table 3 | Number of certificates issued for regulated vocational and other qualifications by type of qualification, from April to June 2011 to April to June 2016 |
| Table 4 | The 50 awarding organisations that issued the highest number of certificates in vocational and other qualifications for the quarter April to June 2016 (April to June 2015 shown for comparison) |
| Table 5 | Total number of certificates issued in vocational and other qualifications by level of qualification, from April to June 2011 to April to June 2016 |
| Table 6 | The 50 qualifications with the most certificates issued in vocational and other qualifications for the quarter April to June 2016 (April to June 2015 shown for comparison) |
| Table 7 | Total number of certificates issued in vocational and other qualifications by sector subject area, from April to June 2011 to April to June 2016 |
| Table 8 | Total number of certificates issued in vocational and other qualifications by second-tier sector subject area, for the quarter April to June 2016 (April to June 2015 shown for comparison) |
| Table 9 | England – the 50 awarding organisations with the highest number of certificates issued in vocational and other qualifications for July 2015 to June 2016 |
| Table 10 | Wales – the 50 awarding organisations with the highest number of certificates issued in vocational and other qualifications for July 2015 to June 2016 |
| Table 11 | Northern Ireland – the 50 awarding organisations with the highest number of certificates issued in vocational and other qualifications for July 2015 to June 2016 |

Table 1: Number of regulated vocational and other qualifications, from April to June 2011 to April to June 2016

| Period | Basic skills | English for speakers of other languages | Entry level | Free-standing mathematics qualification | Functional skills | Higher level | Key skills | National vocational qualification | Occupational qualification | Other general qualification | QCF | Vocationally related qualification | Total number of qualifications |
|--------------|--------------|---|-------------|---|-------------------|--------------|------------|-----------------------------------|----------------------------|-----------------------------|--------|------------------------------------|--------------------------------|
| Apr-Jun 2011 | 88 | 185 | 340 | 22 | 191 | 533 | 362 | 1,537 | 94 | 712 | 8,607 | 2,306 | 14,977 |
| Jul-Sep 2011 | 88 | 185 | 362 | 22 | 203 | 506 | 377 | 1,518 | 94 | 754 | 9,622 | 2,277 | 16,008 |
| Oct-Dec 2011 | 88 | 177 | 334 | 20 | 208 | 487 | 377 | 1,432 | 87 | 722 | 10,410 | 2,112 | 16,454 |
| Jan-Mar 2012 | 88 | 183 | 321 | 20 | 208 | 447 | 377 | 1,349 | 86 | 693 | 11,045 | 2,003 | 16,820 |
| Apr-Jun 2012 | 88 | 185 | 316 | 20 | 207 | 422 | 368 | 1,305 | 86 | 678 | 11,661 | 1,969 | 17,305 |
| Jul-Sep 2012 | 88 | 186 | 319 | 20 | 206 | 418 | 368 | 1,282 | 86 | 752 | 12,605 | 1,957 | 18,287 |
| Oct-Dec 2012 | 80 | 185 | 297 | 14 | 193 | 414 | 368 | 1,148 | 85 | 758 | 13,278 | 1,662 | 18,482 |
| Jan-Mar 2013 | 80 | 190 | 292 | 14 | 202 | 411 | 368 | 939 | 77 | 739 | 14,142 | 1,401 | 18,855 |
| Apr-Jun 2013 | 80 | 188 | 292 | 14 | 222 | 408 | 359 | 841 | 77 | 737 | 14,927 | 1,285 | 19,430 |
| Jul-Sep 2013 | 80 | 189 | 296 | 14 | 232 | 405 | 359 | 788 | 71 | 785 | 16,291 | 1,268 | 20,778 |
| Oct-Dec 2013 | 32 | 189 | 279 | 7 | 238 | 355 | 191 | 652 | 68 | 774 | 17,026 | 1,032 | 20,843 |
| Jan-Mar 2014 | 22 | 191 | 274 | 7 | 237 | 221 | 165 | 391 | 20 | 740 | 17,345 | 579 | 20,192 |
| Apr-Jun 2014 | 22 | 187 | 196 | 7 | 239 | 140 | 133 | 240 | 9 | 564 | 17,501 | 486 | 19,724 |
| Jul-Sep 2014 | 22 | 189 | 195 | 14 | 239 | 144 | 135 | 197 | 1 | 598 | 18,742 | 514 | 20,990 |
| Oct-Dec 2014 | 10 | 185 | 186 | 14 | 215 | 125 | 125 | 142 | 1 | 595 | 18,908 | 501 | 21,007 |
| Jan-Mar 2015 | 10 | 195 | 165 | 14 | 215 | 109 | 116 | 94 | 1 | 559 | 19,141 | 424 | 21,043 |
| Apr-Jun 2015 | 10 | 195 | 164 | 14 | 215 | 104 | 115 | 86 | | 553 | 19,337 | 421 | 21,214 |
| Jul-Sep 2015 | 12 | 186 | 194 | 14 | 215 | 108 | 113 | 84 | 5 | 663 | 20,019 | 527 | 22,140 |
| Oct-Dec 2015 | 6 | 169 | 173 | 14 | 203 | 86 | 97 | 94 | 7 | 660 | 19,855 | 560 | 21,924 |
| Jan-Mar 2016 | 4 | 142 | 175 | 14 | 221 | 81 | 91 | 48 | 11 | 664 | 19,668 | 557 | 21,676 |
| Apr-Jun 2016 | 4 | 171 | 298 | 14 | 221 | 116 | 158 | 69 | 13 | 1100 | 28,542 | 894 | 31,600 |

Notes:

1. Vocational and other qualifications represent all regulated qualifications other than GCSEs, GCEs and the Diploma.
2. Data are supplied by awarding organisations.

Table 2: Total number of certificates issued in vocational and other qualifications, from April to June 2011 to April to June 2016, showing certificates issued per quarter and per 12 months to quarter end

| England, Wales and Northern Ireland | | |
|-------------------------------------|-------------------------------------|--------------------------|
| Period | Total number of certificates issued | |
| | Quarter | 12 months to quarter end |
| Apr – Jun 2011 | 1,911,100 | 7,863,450 |
| Jul – Sep 2011 | 3,548,000 | 7,895,700 |
| Oct – Dec 2011 | 1,271,400 | 7,997,800 |
| Jan – Mar 2012 | 1,384,550 | 8,115,050 |
| Apr – Jun 2012 | 2,116,500 | 8,320,400 |
| Jul – Sep 2012 | 4,013,150 | 8,785,550 |
| Oct – Dec 2012 | 1,345,250 | 8,859,400 |
| Jan – Mar 2013 | 1,433,200 | 8,908,100 |
| Apr – Jun 2013 | 2,463,950 | 9,255,550 |
| Jul – Sep 2013 | 3,953,850 | 9,196,250 |
| Oct – Dec 2013 | 1,283,550 | 9,134,550 |
| Jan – Mar 2014 | 1,433,350 | 9,134,700 |
| Apr – Jun 2014 | 2,163,750 | 8,834,450 |
| Jul – Sep 2014 | 3,800,100 | 8,680,700 |
| Oct – Dec 2014 | 1,281,600 | 8,678,800 |
| Jan – Mar 2015 | 1,362,600 | 8,608,050 |
| Apr – Jun 2015 | 1,892,700 | 8,337,000 |
| Jul – Sep 2015 | 3,789,200 | 8,326,100 |
| Oct – Dec 2015 | 1,132,000 | 8,176,500 |
| Jan – Mar 2016 | 1,296,950 | 8,110,800 |
| Apr – Jun 2016 | 1,652,750 | 7,870,900 |

Source: Regulated Qualifications Activity Database

Notes:

1. Vocational and other qualifications represent all regulated qualifications other than GCSEs, GCEs and the Diploma.
2. Data are supplied by awarding organisations.
3. Rounding: All figures are rounded to the nearest 50, values less than 25 will appear as zero~. Zero represent no achievements. Figures have been rounded independently so may not sum to the total.

Table 3: Number of certificates issued for regulated vocational and other qualifications by type of qualification, from April to June 2011 to April to June 2016

England, Wales & Northern Ireland

| Period | Basic Skills | English for Speakers of Other Languages | Entry Level | Free Standing Mathematics Qualification | Functional Skills | Higher Level | Key Skills | National Vocational Qualification | Occupational Qualification | Other General Qualification | QCF | Vocationally-Related Qualification | Total number of certificates |
|----------------|--------------|---|-------------|---|-------------------|--------------|------------|-----------------------------------|----------------------------|-----------------------------|-----------|------------------------------------|------------------------------|
| Apr – Jun 2011 | 175,300 | 53,750 | 22,500 | 0 | 156,050 | 3,900 | 130,600 | 128,600 | 3,600 | 128,800 | 722,300 | 385,750 | 1,911,100 |
| Jul – Sep 2011 | 138,800 | 115,100 | 125,600 | 23,900 | 334,300 | 12,100 | 243,250 | 124,300 | 3,600 | 480,650 | 1,384,650 | 561,800 | 3,548,000 |
| Oct – Dec 2011 | 99,650 | 52,250 | 3,450 | 0 | 70,600 | 4,000 | 108,300 | 51,000 | 2,000 | 17,050 | 807,250 | 55,850 | 1,271,400 |
| Jan – Mar 2012 | 127,550 | 67,900 | 6,100 | 500 | 96,800 | 3,600 | 130,850 | 31,100 | 1,000 | 46,450 | 821,450 | 51,250 | 1,384,550 |
| Apr – Jun 2012 | 151,200 | 61,250 | 14,450 | 0 | 192,050 | 2,500 | 180,800 | 22,600 | 700 | 70,000 | 1,225,900 | 195,050 | 2,116,500 |
| Jul– Sep 2012 | 134,550 | 94,500 | 90,750 | 22,450 | 305,300 | 6,700 | 239,250 | 24,150 | 900 | 392,250 | 2,428,700 | 273,650 | 4,013,150 |
| Oct – Dec 2012 | 33,450 | 45,750 | 3,100 | 0 | 87,250 | 2,000 | 107,900 | 11,750 | 250 | 16,400 | 1,016,250 | 21,100 | 1,345,250 |
| Jan – Mar 2013 | 23,700 | 58,550 | 5,050 | 550 | 136,850 | 2,050 | 116,300 | 6,750 | 150 | 75,350 | 985,400 | 22,500 | 1,433,200 |
| Apr – Jun 2013 | 23,800 | 74,750 | 16,700 | 500 | 256,500 | 1,350 | 137,000 | 5,150 | 100 | 76,700 | 1,728,700 | 142,600 | 2,463,950 |
| Jul – Sep 2013 | 20,850 | 108,600 | 77,700 | 22,150 | 383,950 | 2,150 | 184,350 | 5,100 | 50 | 481,650 | 2,505,450 | 161,900 | 3,953,850 |
| Oct – Dec 2013 | 1,850 | 41,800 | 4,600 | 0 | 153,800 | 1,650 | 8,250 | 3,000 | 50 | 29,400 | 1,026,700 | 12,400 | 1,283,550 |
| Jan – Mar 2014 | 1,000 | 74,550 | 5,400 | 500 | 204,050 | 900 | 21,150 | 1,900 | 0~ | 90,200 | 1,020,800 | 12,950 | 1,433,350 |
| Apr – Jun 2014 | 1,050 | 96,450 | 12,650 | 500 | 307,050 | 1,050 | 38,700 | 1,450 | 0~ | 89,700 | 1,539,600 | 75,500 | 2,163,750 |
| Jul – Sep 2014 | 700 | 143,450 | 66,150 | 34,800 | 410,850 | 1,650 | 54,750 | 1,400 | 0 | 710,350 | 2,297,150 | 78,850 | 3,800,100 |
| Oct – Dec 2014 | 50 | 62,400 | 3,400 | 0 | 163,050 | 1,650 | 3,100 | 1,000 | 0 | 31,300 | 1,007,500 | 8,150 | 1,281,600 |
| Jan – Mar 2015 | 50 | 72,650 | 3,150 | 550 | 186,100 | 1,450 | 16,650 | 700 | 0~ | 93,700 | 981,050 | 6,650 | 1,362,600 |
| Apr – Jun 2015 | 0~ | 51,350 | 7,900 | 550 | 299,750 | 1,250 | 32,600 | 600 | 0 | 137,300 | 1,349,100 | 12,300 | 1,892,700 |
| Jul – Sep 2015 | 50 | 85,950 | 60,550 | 36,200 | 385,900 | 4,700 | 47,550 | 500 | 0 | 1,012,450 | 2,135,400 | 20,000 | 3,789,200 |
| Oct – Dec 2015 | 0~ | 40,300 | 2,050 | 0 | 150,900 | 1,050 | 1,850 | 1,100 | 0 | 16,800 | 912,850 | 5,200 | 1,132,000 |
| Jan – Mar 2016 | 0 | 52,850 | 2,300 | 450 | 158,600 | 2,950 | 15,700 | 200 | 0~ | 95,600 | 961,450 | 6,850 | 1,296,950 |
| Apr – Jun 2016 | 0 | 55,100 | 6,900 | 450 | 236,800 | 3,350 | 15,400 | 250 | 0~ | 72,350 | 1,248,200 | 13,950 | 1,652,750 |

Notes:

Rounding: All figures are rounded to the nearest 50, values less than 25 will appear as 0~. Zero represent no achievements.

Figures have been rounded independently so may not sum to the total.

Table 4: The 50 awarding organisations that issued the highest number of certificates in vocational and other qualifications for the quarter April to June 2016 (April to June 2015 shown for comparison)

| England, Wales & Northern Ireland | Total number of certificates issued (for the quarter) | |
|--|---|----------------|
| | Apr - Jun 2015 | Apr - Jun 2016 |
| Pearson Education Ltd | 427,350 | 306,500 |
| City and Guilds of London Institute | 354,700 | 286,250 |
| OCR | 101,700 | 87,050 |
| NCFE | 77,550 | 62,750 |
| Chartered Institute of Environmental Health | 74,550 | 60,150 |
| BCS, The Chartered Institute for IT | 27,050 | 59,900 |
| Cambridge English Language Assessment | 73,400 | 59,550 |
| Trinity College London | 44,850 | 59,300 |
| Highfield Awarding Body for Compliance | 70,200 | 57,050 |
| Qualsafe Awards | 38,350 | 44,750 |
| Associated Board of the Royal Schools of Music | 73,800 | 44,350 |
| WJEC-CBAC | 56,600 | 29,800 |
| First Aid Awards Ltd | 23,100 | 27,500 |
| LAMDA | 8,100 | 20,450 |
| NOCN | 21,850 | 18,400 |
| Excellence, Achievement & Learning Limited | 19,850 | 17,950 |
| Imperial Society of Teachers of Dancing | 15,300 | 15,600 |
| Training Qualifications UK Ltd | 12,450 | 15,250 |
| Association of Accounting Technicians | 13,350 | 14,850 |
| Cskills Awards | 16,100 | 14,600 |
| 1st4sport Qualifications | 15,300 | 14,500 |
| Ascentis | 15,550 | 14,050 |
| British Safety Council | 9,500 | 12,950 |
| BIIAB | 17,950 | 12,900 |
| Royal Academy of Dance | 11,550 | 12,100 |
| AoFA Qualifications | 9,500 | 11,950 |
| Active IQ | 11,250 | 11,300 |
| Royal Society for Public Health | 11,200 | 11,250 |
| Sports Leaders UK | 11,600 | 11,150 |
| The Learning Machine | 8,300 | 10,850 |
| IQL | 7,800 | 10,600 |
| Skillsfirst Awards Ltd | 7,950 | 9,050 |
| University of West London | 7,250 | 9,000 |
| Award Scheme Development and Accreditation Network | 9,150 | 8,950 |
| VTCT | 9,650 | 8,900 |
| Graded Qualifications Alliance | 2,600 | 8,600 |
| The Institute of the Motor Industry | 10,250 | 8,500 |
| Innovate Awarding | 7,750 | 7,850 |
| International Dance Teachers Association | 6,250 | 7,750 |
| AQA Education | 9,300 | 6,600 |
| Gateway Qualifications Limited | 5,950 | 6,600 |
| English Speaking Board (International) Ltd | 4,250 | 6,150 |
| Safety Training Awards | 5,600 | 5,950 |
| Rock School Ltd | 5,400 | 5,750 |
| Laser Learning Awards | 3,650 | 4,800 |
| Industry Qualifications | 5,000 | 4,500 |
| Future (Awards and Qualifications) Ltd | 6,150 | 4,400 |
| Chartered Insurance Institute | 3,300 | 4,300 |
| YMCA Awards | 5,350 | 4,300 |
| iCan Qualifications Limited | 4,900 | 4,250 |

Source: Regulated Qualifications Activity Database

Notes:

1. Vocational and other qualifications represent all regulated qualifications other than GCSEs, GCEs and the Diploma.
2. Data are supplied by awarding organisations.

Table 5: Total number of certificates issued in vocational and other qualifications by level of qualification, from April to June 2011 to April to June 2016

| England, Wales & Northern Ireland | | | | | | | | | | | Total number of achievements |
|-----------------------------------|---------|-----------|---------|-----------|---------|---------|---------|---------|---------|-----|------------------------------------|
| Entry level | Level 1 | Level 1/2 | Level 2 | Level 3 | Level 4 | Level 5 | Level 6 | Level 7 | Level 8 | | |
| Apr – Jun 2011 | 160,250 | 487,700 | 0 | 1,029,900 | 207,100 | 16,750 | 6,350 | 1,850 | 1,150 | 0~ | 1,911,100 |
| Jul – Sep 2011 | 451,200 | 908,450 | 7,950 | 1,614,850 | 515,750 | 27,700 | 15,700 | 4,200 | 2,100 | 100 | 3,548,000 |
| Oct – Dec 2011 | 115,450 | 361,550 | 0 | 621,000 | 146,900 | 15,100 | 6,950 | 1,550 | 2,850 | 50 | 1,271,400 |
| Jan – Mar 2012 | 128,050 | 394,600 | 1,200 | 682,500 | 150,600 | 15,200 | 7,100 | 2,950 | 2,250 | 100 | 1,384,550 |
| Apr – Jun 2012 | 185,850 | 561,550 | 0 | 1,121,050 | 221,000 | 16,500 | 6,950 | 1,500 | 2,050 | 50 | 2,116,500 |
| Jul– Sep 2012 | 458,050 | 965,750 | 36,200 | 1,900,950 | 603,950 | 28,150 | 13,950 | 3,550 | 2,500 | 50 | 4,013,150 |
| Oct – Dec 2012 | 122,850 | 403,050 | 0 | 634,200 | 158,100 | 16,400 | 6,500 | 2,400 | 1,700 | 50 | 1,345,250 |
| Jan – Mar 2013 | 134,000 | 421,250 | 20,350 | 671,750 | 159,800 | 14,300 | 7,350 | 2,800 | 1,450 | 100 | 1,433,200 |
| Apr – Jun 2013 | 223,350 | 620,850 | 0~ | 1,295,000 | 299,900 | 14,050 | 7,750 | 1,650 | 1,250 | 100 | 2,463,950 |
| Jul – Sep 2013 | 452,200 | 954,950 | 138,650 | 1,728,100 | 632,150 | 26,150 | 14,850 | 4,050 | 2,700 | 100 | 3,953,850 |
| Oct – Dec 2013 | 123,800 | 354,700 | 7,700 | 608,000 | 166,600 | 11,750 | 7,200 | 1,950 | 1,750 | 100 | 1,283,550 |
| Jan – Mar 2014 | 163,000 | 361,200 | 29,950 | 681,900 | 176,250 | 11,800 | 6,600 | 1,500 | 1,050 | 50 | 1,433,350 |
| Apr – Jun 2014 | 230,100 | 516,700 | 8,350 | 1,069,950 | 314,300 | 12,100 | 8,800 | 2,350 | 1,050 | 50 | 2,163,750 |
| Jul – Sep 2014 | 463,700 | 794,500 | 381,000 | 1,439,450 | 673,850 | 22,900 | 18,750 | 4,050 | 1,850 | 50 | 3,800,100 |
| Oct – Dec 2014 | 138,900 | 333,300 | 3,750 | 598,650 | 182,300 | 12,600 | 8,850 | 1,900 | 1,350 | 50 | 1,281,600 |
| Jan – Mar 2015 | 148,400 | 325,500 | 46,100 | 629,000 | 187,400 | 12,050 | 9,750 | 2,700 | 1,600 | 100 | 1,362,600 |
| Apr – Jun 2015 | 226,400 | 465,400 | 75,050 | 787,500 | 309,450 | 14,600 | 10,050 | 2,800 | 1,350 | 100 | 1,892,700 |
| Jul – Sep 2015 | 467,550 | 715,600 | 752,050 | 1,112,150 | 687,100 | 29,700 | 17,150 | 5,750 | 2,050 | 100 | 3,789,200 |
| Oct – Dec 2015 | 113,800 | 286,800 | 4,700 | 523,550 | 176,800 | 14,000 | 9,500 | 1,600 | 1,200 | 0~ | 1,132,000 |
| Jan - Mar 2016 | 146,050 | 299,700 | 62,250 | 571,950 | 191,400 | 13,050 | 9,300 | 2,450 | 750 | 50 | 1,296,950 |
| Apr - June 2016 | 214,400 | 395,350 | 32,200 | 692,250 | 285,950 | 17,650 | 9,700 | 4,350 | 950 | 0~ | 1,652,750 |

Source: Regulated Qualifications Activity Database

Notes:

1. Vocational and other qualifications represent all regulated qualifications other than GCSEs, AS/A levels and the Diploma.
2. Data are supplied by awarding organisations.
3. Rounding: All figures are rounded to the nearest 50, values less than 25 will appear as zero~. Zero represent no achievements. Figures have been rounded independently so may not sum to the total.

Table 6: The 50 qualifications with the most certificates issued in vocational and other qualifications for the quarter April to June 2016 (April to June 2015 shown for comparison)

| Qualification | Total number of certificates issued (for the quarter) | |
|---|---|----------------|
| | Apr – Jun 2015 | Apr – Jun 2016 |
| | England, Wales & Northern Ireland | |
| BCS Level 2 ECDL Certificate in IT Application Skills | 11,900 | 50,650 |
| CIEH Level 2 Award in Food Safety in Catering (QCF) | 35,300 | 29,100 |
| Pearson Edexcel Functional Skills qualification in Mathematics at Level 1 | 30,850 | 25,300 |
| QA Level 2 Award in Emergency First Aid at Work (QCF) | 20,900 | 23,500 |
| City & Guilds Functional Skills qualification in Mathematics at Level 1 | 27,650 | 17,350 |
| TCL Entry Level Certificate in ESOL International - Speaking and Listening (Entry) | 7,500 | 16,900 |
| FAA Level 2 Award in Emergency First Aid at Work (QCF) | 14,150 | 15,350 |
| Cambridge English Level 1 Certificate in English (IELTS 5.5-6.5) (ESOL) | 14,900 | 14,450 |
| Pearson Edexcel Functional Skills qualification in English at Level 1 | 15,950 | 13,300 |
| City & Guilds Functional Skills qualification in English at Level 1 | 20,050 | 12,700 |
| Pearson Edexcel Functional Skills qualification in Mathematics at Level 2 | 17,950 | 12,650 |
| City & Guilds Level 2 Award in Functional Skills Mathematics | 24,000 | 12,450 |
| City & Guilds Functional Skills qualification in English at Level 2 | 19,300 | 12,200 |
| HABC Level 2 Award in Emergency First Aid at Work (QCF) | 14,600 | 11,550 |
| City & Guilds Functional Skills qualification in mathematics at Entry 3 | 12,950 | 10,900 |
| Pearson Edexcel Functional Skills qualification in English at Level 2 | 13,250 | 10,550 |
| BSC Level 1 Award in Health and Safety in a Construction Environment (QCF) | 5,800 | 9,600 |
| ABRSM Level 1 Award in Graded Examination in Music Performance (Grade 1) | 16,450 | 8,950 |
| QA Level 3 Award in First Aid at Work (QCF) | 8,150 | 8,850 |
| Pearson Edexcel Functional Skills qualification in Mathematics at Entry 3 | 7,600 | 8,550 |
| BIIAB Level 2 Award for Personal Licence Holders (QCF) | 12,200 | 8,400 |
| Pearson BTEC Level 1/Level 2 First Award in Sport | 11,650 | 7,800 |
| City & Guilds Functional Skills qualification in Information and Communication | 9,850 | 7,550 |
| IQL Level 2 Award in Pool Lifeguarding, Intervention, Supervision and Rescue | 5,650 | 7,450 |
| Cambridge English Level 2 Certificate in English (IELTS 7.0-8.0) (ESOL) | 7,550 | 7,300 |
| HABC Level 2 Award in Food Safety in Catering (QCF) | 8,950 | 7,250 |
| AAT Level 2 Certificate In Accounting (QCF) | 7,000 | 6,850 |
| TQUK Level 2 Award in Emergency First Aid at Work (QCF) | 5,400 | 6,800 |
| ABRSM Level 1 Award in Graded Examination in Music Performance (Grade 2) | 11,750 | 6,750 |
| Sports Leaders UK Level 1 Award in Sports Leadership (QCF) | 6,800 | 6,650 |
| Pearson Edexcel Functional Skills qualification in Information and Communication | 6,800 | 6,600 |
| AOFAQ Level 2 Award in Emergency First Aid at Work (QCF) | 5,450 | 6,550 |
| CIEH Level 2 Award in Health and Safety in the Workplace (QCF) | 8,550 | 6,550 |
| CIEH Level 2 Award in Emergency First Aid at Work (QCF) | 9,050 | 6,450 |
| City & Guilds Functional Skills qualification in Information and Communication | 7,450 | 6,200 |
| City & Guilds Functional Skills qualification in English at Entry 3 | 6,600 | 6,150 |
| QA Level 3 Award in Paediatric First Aid (QCF) | 5,250 | 6,100 |
| FAA Level 3 Award In First Aid at Work (QCF) | 4,400 | 5,950 |
| Pearson Edexcel Functional Skills qualification in Information and Communication | 4,500 | 5,550 |
| 1st4sport Level 1 Award in Coaching Football (QCF) | 5,250 | 5,400 |
| Pearson BTEC Level 2 Award in Employment Responsibilities and Rights in | 3,100 | 5,350 |
| ABRSM Level 1 Award in Graded Examination in Music Performance (Grade 3) | 9,550 | 5,250 |
| Pearson BTEC Level 1/Level 2 First Award in Business | 8,950 | 5,200 |
| ABRSM Level 2 Award in Graded Examination in Music Theory (Grade 5) (QCF) | 5,350 | 4,850 |
| Pearson EDI Functional Skills qualification in English at Level 1 | 1,550 | 4,750 |
| Cambridge English Entry Level Certificate in English (IELTS 4.0-5.0) (Entry 3) (ESOL) | 5,300 | 4,750 |
| TQUK Level 3 Award in First Aid at Work (QCF) | 4,050 | 4,400 |
| Pearson BTEC Level 1/Level 2 First Award in Information and Creative | 8,550 | 4,100 |
| AAT Level 3 Diploma In Accounting (QCF) | 3,650 | 3,950 |
| ABRSM Level 2 Certificate in Graded Examination in Music Performance (Grade | 7,600 | 3,850 |

Source: Regulated Qualifications Activity Database

Notes:

1. Vocational and other qualifications represent all regulated qualifications other than GCSEs, GCEs and the Diploma.
2. Data are supplied by awarding organisations.

Rounding: All figures are rounded to the nearest 50, values less than 25 will appear as zero-. Zero represent no achievements.

Table 7: Total number of certificates issued in vocational and other qualifications by sector subject area, from April to June 2011 to April to June 2016

England, Wales & Northern Ireland

| | Health, public services and care | Science and mathematics | Agriculture, horticulture and animal care | Engineering and manufacturing technologies | Construction, planning and the built environment | Information and communication technology | Retail and commercial enterprise | Leisure, travel and tourism | Arts, media and publishing | History, philosophy and theology | Social sciences | Languages, literature and culture | Education and training | Preparation for life and work | Business, administration, finance and law | Total number of certificates issued |
|----------------|----------------------------------|-------------------------|---|--|--|--|----------------------------------|-----------------------------|----------------------------|----------------------------------|-----------------|-----------------------------------|------------------------|-------------------------------|---|-------------------------------------|
| Apr – Jun 2011 | 172,950 | 45,900 | 37,500 | 98,600 | 50,550 | 179,850 | 170,250 | 126,850 | 206,400 | 3,100 | 100 | 74,250 | 24,650 | 584,900 | 135,150 | 1,911,100 |
| Jul – Sep 2011 | 251,050 | 116,400 | 56,100 | 169,200 | 100,200 | 316,000 | 247,200 | 217,650 | 358,950 | 41,700 | 4,100 | 244,350 | 37,950 | 1,186,100 | 201,150 | 3,548,000 |
| Oct – Dec 2011 | 140,350 | 1,900 | 20,500 | 79,500 | 36,300 | 48,150 | 170,300 | 70,550 | 126,000 | 550 | 250 | 43,800 | 17,000 | 407,650 | 108,650 | 1,271,400 |
| Jan – Mar 2012 | 134,350 | 3,100 | 20,000 | 69,700 | 37,550 | 71,700 | 162,600 | 60,800 | 106,950 | 150 | 150 | 47,650 | 20,400 | 527,150 | 122,200 | 1,384,550 |
| Apr – Jun 2012 | 191,200 | 45,050 | 27,100 | 87,450 | 53,000 | 189,850 | 177,050 | 130,850 | 222,550 | 50 | 50 | 73,100 | 22,300 | 744,150 | 152,700 | 2,116,500 |
| Jul – Sep 2012 | 329,700 | 177,100 | 51,150 | 179,500 | 112,250 | 340,100 | 274,900 | 266,050 | 427,950 | 45,800 | 3,750 | 223,100 | 37,100 | 1,283,350 | 261,400 | 4,013,150 |
| Oct – Dec 2012 | 175,400 | 1,950 | 18,050 | 81,500 | 42,150 | 58,300 | 159,650 | 81,150 | 131,800 | 250 | 100 | 29,750 | 18,850 | 423,700 | 122,600 | 1,345,250 |
| Jan – Mar 2013 | 187,900 | 8,000 | 21,300 | 78,400 | 36,050 | 73,950 | 148,150 | 62,350 | 114,250 | 150 | 150 | 56,100 | 20,350 | 500,700 | 125,350 | 1,433,200 |
| Apr – Jun 2013 | 289,750 | 82,450 | 30,000 | 101,550 | 58,200 | 201,150 | 182,000 | 176,350 | 258,250 | 150 | 50 | 84,700 | 23,800 | 782,000 | 193,600 | 2,463,950 |
| Jul – Sep 2013 | 371,650 | 187,650 | 50,750 | 178,450 | 106,650 | 297,850 | 263,950 | 227,950 | 392,100 | 40,850 | 4,350 | 277,600 | 43,500 | 1,255,250 | 255,350 | 3,953,850 |
| Oct – Dec 2013 | 221,700 | 4,950 | 16,800 | 74,650 | 36,200 | 52,100 | 146,050 | 71,100 | 131,500 | 50 | 0- | 34,500 | 19,000 | 362,500 | 112,400 | 1,283,550 |
| Jan – Mar 2014 | 259,300 | 5,450 | 17,900 | 74,350 | 33,350 | 59,600 | 140,300 | 59,650 | 101,350 | 100 | 100 | 67,150 | 19,950 | 472,100 | 122,700 | 1,433,350 |
| Apr – Jun 2014 | 308,600 | 47,200 | 28,750 | 90,250 | 52,550 | 143,250 | 167,350 | 137,400 | 252,600 | 8,700 | 50 | 63,250 | 22,550 | 671,200 | 170,100 | 2,163,750 |
| Jul – Sep 2014 | 393,500 | 267,650 | 48,000 | 161,900 | 110,400 | 258,700 | 233,900 | 207,300 | 397,050 | 24,450 | 6,250 | 310,400 | 38,200 | 1,100,200 | 242,200 | 3,800,100 |
| Oct – Dec 2014 | 242,100 | 1,600 | 17,950 | 72,950 | 45,500 | 40,050 | 136,000 | 60,450 | 136,700 | 300 | 50 | 33,050 | 17,000 | 368,600 | 109,400 | 1,281,600 |
| Jan – Mar 2015 | 259,800 | 12,250 | 19,400 | 73,150 | 47,600 | 48,900 | 133,600 | 51,550 | 107,750 | 550 | 100 | 78,200 | 17,600 | 413,550 | 98,600 | 1,362,600 |
| Apr – Jun 2015 | 293,750 | 34,850 | 29,900 | 94,450 | 65,100 | 86,250 | 154,900 | 101,700 | 201,150 | 3,950 | 0- | 42,850 | 20,650 | 626,750 | 136,400 | 1,892,700 |
| Jul – Sep 2015 | 393,100 | 253,800 | 49,500 | 159,200 | 117,500 | 239,550 | 196,150 | 202,350 | 384,200 | 26,200 | 9,450 | 450,250 | 35,100 | 1,052,150 | 220,700 | 3,789,200 |
| Oct – Dec 2015 | 235,450 | 2,050 | 18,550 | 69,350 | 48,650 | 34,700 | 118,600 | 57,300 | 123,700 | 500 | 50 | 23,800 | 16,250 | 304,350 | 78,700 | 1,132,000 |
| Jan-Mar 2016 | 254,750 | 11,800 | 7,800 | 68,500 | 48,600 | 63,200 | 114,850 | 50,000 | 128,000 | 600 | 100 | 78,650 | 17,150 | 374,100 | 78,900 | 1,296,950 |
| Apr-Jun 2016 | 282,600 | 11,900 | 24,550 | 82,150 | 65,700 | 107,750 | 133,500 | 86,850 | 186,050 | 1,450 | 50 | 40,600 | 20,200 | 497,300 | 112,100 | 1,652,750 |

Source: Regulated Qualifications Activity Database

Notes:

1. Vocational and other qualifications represent all regulated qualifications other than GCSEs, GCEs and the Diploma.
2. Data are supplied by awarding organisations.

Rounding: All figures are rounded to the nearest 50, values less than 25 will appear as 0-. Zero represent no achievements. Figures have been rounded independently so may not sum to the total.

Table 8: Total number of certificates issued in vocational and other qualifications by second-tier sector subject area, for the quarter April to June 2016 (April to June 2015 shown for comparison)

| Sector subject area | Total number of certificates issued | |
|---|-------------------------------------|----------------|
| | (for the quarter) | |
| | Apr – Jun 2015 | Apr – Jun 2016 |
| 01.1 Medicine and dentistry | 100 | 550 |
| 01.2 Nursing and subjects and vocations allied to medicine | 1,300 | 1,000 |
| 01.3 Health and social care | 242,450 | 240,300 |
| 01.4 Public services | 32,500 | 28,150 |
| 01.5 Child development and well-being | 17,400 | 12,600 |
| 02.1 Science | 33,400 | 10,800 |
| 02.2 Mathematics and statistics | 1,500 | 1,100 |
| 03.1 Agriculture | 6,250 | 3,000 |
| 03.2 Horticulture and forestry | 14,450 | 14,600 |
| 03.3 Animal care and veterinary science | 7,650 | 6,350 |
| 03.4 Environmental conservation | 1,500 | 600 |
| 04.1 Engineering | 29,800 | 29,150 |
| 04.2 Manufacturing technologies | 39,950 | 33,450 |
| 04.3 Transportation operations and maintenance | 24,700 | 19,550 |
| 05.1 Architecture | 0 | 0 |
| 05.2 Building and construction | 65,100 | 65,700 |
| 05.3 Urban, rural and regional planning | 0 | 0 |
| 06.1 ICT practitioners | 29,600 | 21,300 |
| 06.2 ICT for users | 56,650 | 86,450 |
| 07.1 Retailing and wholesaling | 10,150 | 11,650 |
| 07.2 Warehousing and distribution | 9,300 | 9,100 |
| 07.3 Service enterprises | 30,850 | 26,300 |
| 07.4 Hospitality and catering | 104,600 | 86,400 |
| 08.1 Sport, leisure and recreation | 94,550 | 82,650 |
| 08.2 Travel and tourism | 7,100 | 4,200 |
| 09.1 Performing arts | 171,500 | 163,050 |
| 09.2 Crafts, creative arts and design | 19,850 | 16,300 |
| 09.3 Media and communication | 9,600 | 6,450 |
| 09.4 Publishing and information services | 200 | 200 |
| 10.1 History | 0 | 0 |
| 10.2 Archaeology and archaeological sciences | 0 | 0 |
| 10.3 Philosophy | 450 | 450 |
| 10.4 Theology and religious studies | 3,550 | 1,000 |
| 11.1 Geography | 0 | 0 |
| 11.2 Sociology and social policy | 0 | 50 |
| 11.3 Politics | 0 | 0 |
| 11.4 Economics | 0 | 0 |
| 12.1 Languages, literature and culture of the British Isles | 36,850 | 36,350 |
| 12.2 Other languages, literature and culture | 6,050 | 4,250 |
| 12.3 Linguistics | 0 | 0 |
| 13.1 Teaching and lecturing | 11,250 | 10,850 |
| 13.2 Direct learning support | 9,400 | 9,350 |
| 14.1 Foundations for learning and life | 570,600 | 454,000 |
| 14.2 Preparation for work | 56,150 | 43,300 |
| 15.1 Accounting and finance | 25,650 | 28,550 |
| 15.2 Administration | 45,300 | 28,700 |
| 15.3 Business management | 59,400 | 46,050 |
| 15.4 Marketing and sales | 2,350 | 4,550 |
| 15.5 Law and legal services | 3,700 | 4,300 |

Source: Regulated Qualifications Activity Database

Notes:

1. Vocational and other qualifications represent all regulated qualifications other than GCSEs, GCEs and the Diploma.
2. Data are supplied by awarding organisations.

Rounding: All figures are rounded to the nearest 50, values less than 25 will appear as zero-. Zero represent no achievements.

Table 9: England – the 50 awarding organisations with the highest number of certificates issued in vocational and other qualifications for July 2015 to June 2016

| England only | |
|--|---|
| Awarding organisation | Total number of certificates issued (for the 12 months to quarter end) |
| | Jul 2015 – Jun 2016 |
| Pearson Education Ltd | 1,549,800 |
| City and Guilds of London Institute | 1,061,850 |
| OCR | 383,450 |
| NCFE | 310,600 |
| Cambridge International Examinations | 291,850 |
| Cambridge English Language Assessment | 265,400 |
| AQA Education | 244,550 |
| Highfield Awarding Body for Compliance | 219,750 |
| Associated Board of the Royal Schools of Music | 211,000 |
| Trinity College London | 206,550 |
| Chartered Institute of Environmental Health | 199,450 |
| Qualsafe Awards | 157,500 |
| BCS, The Chartered Institute for IT | 152,550 |
| First Aid Awards Ltd | 96,150 |
| NOCN | 82,200 |
| Excellence, Achievement & Learning Limited | 77,700 |
| Ascentis | 67,050 |
| LAMDA | 64,250 |
| Cskills Awards | 61,600 |
| 1st4sport Qualifications | 55,600 |
| Imperial Society of Teachers of Dancing | 55,150 |
| Training Qualifications UK Ltd | 50,700 |
| Sports Leaders UK | 49,750 |
| Gateway Qualifications Limited | 49,200 |
| BIIAB | 48,900 |
| The Institute of the Motor Industry | 42,950 |
| Active IQ | 41,750 |
| Royal Society for Public Health | 41,600 |
| VTCT | 41,100 |
| British Safety Council | 40,850 |
| Association of Accounting Technicians | 40,450 |
| Royal Academy of Dance | 38,700 |
| IQL | 36,900 |
| International Baccalaureate Organisation | 36,150 |
| AoFA Qualifications | 35,400 |
| Skillsfirst Awards Ltd | 34,500 |
| International Dance Teachers Association | 31,200 |
| Innovate Awarding | 30,050 |
| Award Scheme Development and Accreditation Network | 28,500 |
| Rock School Ltd | 26,200 |
| The Learning Machine | 25,400 |
| ifs University College (previously known as ifs School of Finance) | 24,350 |
| University of West London | 21,650 |
| Laser Learning Awards | 21,300 |
| University of the Arts London | 20,650 |
| ABC Awards | 19,950 |
| Industry Qualifications | 19,200 |
| Future (Awards and Qualifications) Ltd | 18,200 |
| YMCA Awards | 17,950 |
| Safety Training Awards | 17,850 |

Source: Regulated Qualifications Activity Database

Notes:

1. Vocational and other qualifications represent all regulated qualifications other than GCSEs, GCEs and the Diploma.

2. Data are supplied by awarding organisations.

Rounding: All figures are rounded to the nearest 50, values less than 25 will appear as zero-. Zero represent no achievements.

Table 10: Wales – the 50 awarding organisations with the highest number of certificates issued in vocational and other qualifications for July 2015 to June 2016

| Awarding organisation | Total number of certificates issued (for the 12 months to quarter end) | |
|--|--|---------|
| | Jul 2015 – Jun 2016 | |
| WJEC-CBAC | | 161,900 |
| Pearson Education Ltd | | 103,050 |
| City and Guilds of London Institute | | 97,800 |
| OCR | | 31,550 |
| Chartered Institute of Environmental Health | | 20,050 |
| Highfield Awarding Body for Compliance | | 19,750 |
| Cambridge English Language Assessment | | 11,600 |
| Associated Board of the Royal Schools of Music | | 10,950 |
| Agored Cymru | | 8,650 |
| Qualsafe Awards | | 8,450 |
| Excellence, Achievement & Learning Limited | | 8,200 |
| Trinity College London | | 7,150 |
| AoFA Qualifications | | 5,350 |
| VTCT | | 4,950 |
| NCFE | | 4,350 |
| Safety Training Awards | | 3,500 |
| Cskills Awards | | 3,000 |
| Award Scheme Development and Accreditation Network | | 2,950 |
| First Aid Awards Ltd | | 2,800 |
| British Safety Council | | 2,600 |
| AQA Education | | 2,250 |
| Imperial Society of Teachers of Dancing | | 2,250 |
| The Institute of the Motor Industry | | 2,200 |
| International Baccalaureate Organisation | | 2,100 |
| Royal Academy of Dance | | 2,050 |
| NOCN | | 1,850 |
| 1st4sport Qualifications | | 1,850 |
| Sports Leaders UK | | 1,800 |
| IQL | | 1,750 |
| Association of Accounting Technicians | | 1,600 |
| BCS, The Chartered Institute for IT | | 1,550 |
| Active IQ | | 1,500 |
| ifs University College (previously known as ifs School of Finance) | | 1,450 |
| University of West London | | 1,450 |
| BIAB | | 1,100 |
| YMCA Awards | | 950 |
| Rock School Ltd | | 700 |
| Amateur Swimming Association | | 650 |
| Future (Awards and Qualifications) Ltd | | 550 |
| Equestrian Qualifications Limited | | 550 |
| Scottish Qualifications Authority trading as SQA | | 550 |
| ABC Awards | | 500 |
| Chartered Management Institute | | 450 |
| Prince's Trust | | 400 |
| McDonalds | | 350 |
| FDQ Limited | | 350 |
| Chartered Institute of Legal Executives | | 350 |
| Cambridge International Examinations | | 300 |
| International Dance Teachers Association | | 300 |
| ITC First | | 300 |

Source: Regulated Qualifications Activity Database

Notes:

1. Vocational and other qualifications represent all regulated qualifications other than GCSEs, GCEs and the Diploma.

2. Data are supplied by awarding organisations.

Rounding: All figures are rounded to the nearest 50, values less than 25 will appear as zero~. Zero represent no achievements.

Table 11: Northern Ireland – the 50 awarding organisations with the highest number of certificates issued in vocational and other qualifications for July 2015 to June 2016

| Northern Ireland only | |
|---|---|
| Awarding organisation | Total number of certificates issued (for the 12 months to quarter end) |
| | Jul 2015 – Jun 2016 |
| City and Guilds of London Institute | 55,550 |
| Pearson Education Ltd | 22,250 |
| Council for the Curriculum, Examinations and Assessment | 20,500 |
| Chartered Institute of Environmental Health | 16,450 |
| OCR | 10,950 |
| Associated Board of the Royal Schools of Music | 9,650 |
| Trinity College London | 8,900 |
| University of West London | 6,250 |
| Open College Network Northern Ireland | 5,550 |
| Highfield Awarding Body for Compliance | 2,850 |
| Cambridge English Language Assessment | 2,350 |
| AQA Education | 2,250 |
| Cskills Awards | 2,150 |
| New Era Academy of Drama and Music (London) Ltd | 1,850 |
| Award Scheme Development and Accreditation Network | 1,700 |
| NCFE | 1,650 |
| NOCN | 1,550 |
| Prince's Trust | 1,550 |
| Active IQ | 1,300 |
| Qualsafe Awards | 1,150 |
| AoFA Qualifications | 1,150 |
| IQL | 1,150 |
| First Aid Awards Ltd | 1,000 |
| Rock School Ltd | 1,000 |
| ETC Awards Limited | 1,000 |
| VTCT | 950 |
| Royal Academy of Dance | 850 |
| Graded Qualifications Alliance | 800 |
| The Institute of the Motor Industry | 750 |
| BIAB | 700 |
| Counselling and Psychotherapy Central Awarding Body | 700 |
| BCS, The Chartered Institute for IT | 650 |
| iCan Qualifications Limited | 650 |
| WSET Awards | 600 |
| Future (Awards and Qualifications) Ltd | 550 |
| FDQ Limited | 400 |
| ProQual Awarding Body | 400 |
| Accounting Technicians Ireland | 400 |
| Sports Leaders UK | 350 |
| YMCA Awards | 350 |
| ABC Awards | 350 |
| Imperial Society of Teachers of Dancing | 300 |
| 1st4sport Qualifications | 300 |
| Equestrian Qualifications Limited | 300 |
| Focus Awards Limited | 300 |
| Training Qualifications UK Ltd | 300 |
| British Safety Council | 250 |
| Cambridge International Examinations | 250 |
| Excellence, Achievement & Learning Limited | 200 |
| Safety Training Awards | 200 |

Source: Regulated Qualifications Activity Database

Notes:

1. Vocational and other qualifications represent all regulated qualifications other than GCSEs, GCEs and the Diploma.
2. Data are supplied by awarding organisations.

Rounding: All figures are rounded to the nearest 50, values less than 25 will appear as zero-. Zero represent no achievements.

We wish to make our publications widely accessible. Please contact us at publications@ofqual.gov.uk if you have any specific accessibility requirements.



© Crown copyright 2016

This publication is licensed under the terms of the Open Government Licence v3.0 except where otherwise stated. To view this licence, visit <http://nationalarchives.gov.uk/doc/open-government-licence/version/3> or write to the Information Policy Team, The National Archives, Kew, London TW9 4DU, or email: publications@ofqual.gov.uk.

Where we have identified any third party copyright information you will need to obtain permission from the copyright holders concerned.

This publication is available at www.gov.uk/ofqual.

Any enquiries regarding this publication should be sent to us at:

Office of Qualifications and Examinations Regulation

Spring Place
Coventry Business Park
Herald Avenue
Coventry CV5 6UB

Telephone 0300 303 3344

Textphone 0300 303 3345

Helpline 0300 303 3346