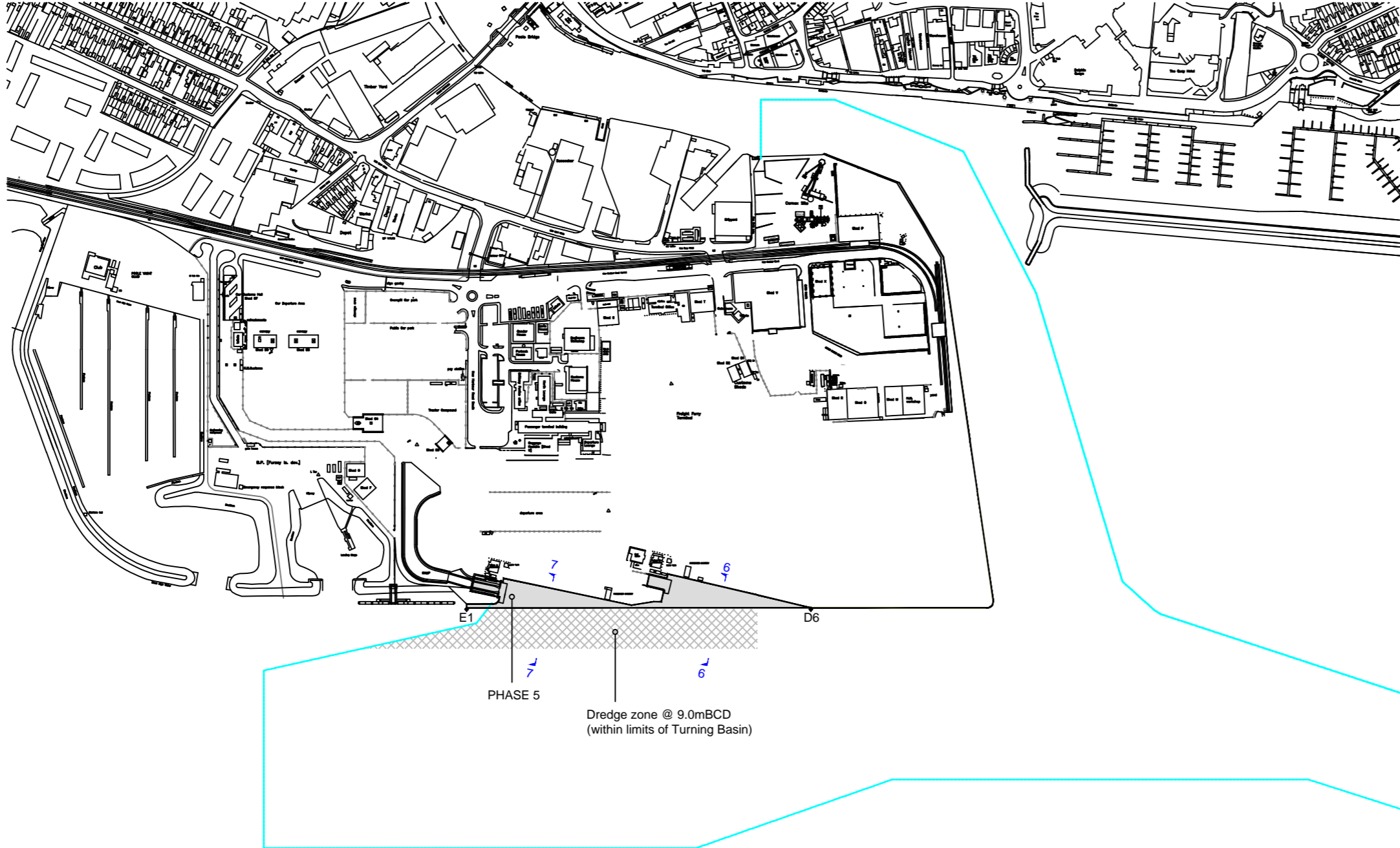
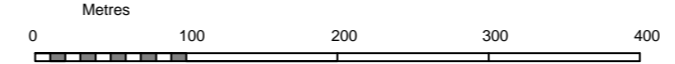




Layout Plan
Scale 1:5000



Based upon Ordnance Survey Map with the sanction of the Controller of H.M. Stationery Office



LEGEND

Denotes maintained Channels

Summary Description of Proposed Works

PHASE 5
Reconstruction of existing Ro-Ro berths 2 and 3 by reclamation of circa 5,000m² of Harbour bed to create 350 linear metres of berthing face, dredged to 9.0mBCD

Setting Out Points
E1 50 42.434N, 001 59.601W
D6 50 42.434N, 001 59.302W

NOTES
1. Building and land uses shown are indicative only.

**THE POOLE HARBOUR (WORKS) REVISION ORDER 2015
PLANS AND SECTIONS REFERRED TO IN THE POOLE HARBOUR (WORKS) REVISION ORDER 2015**

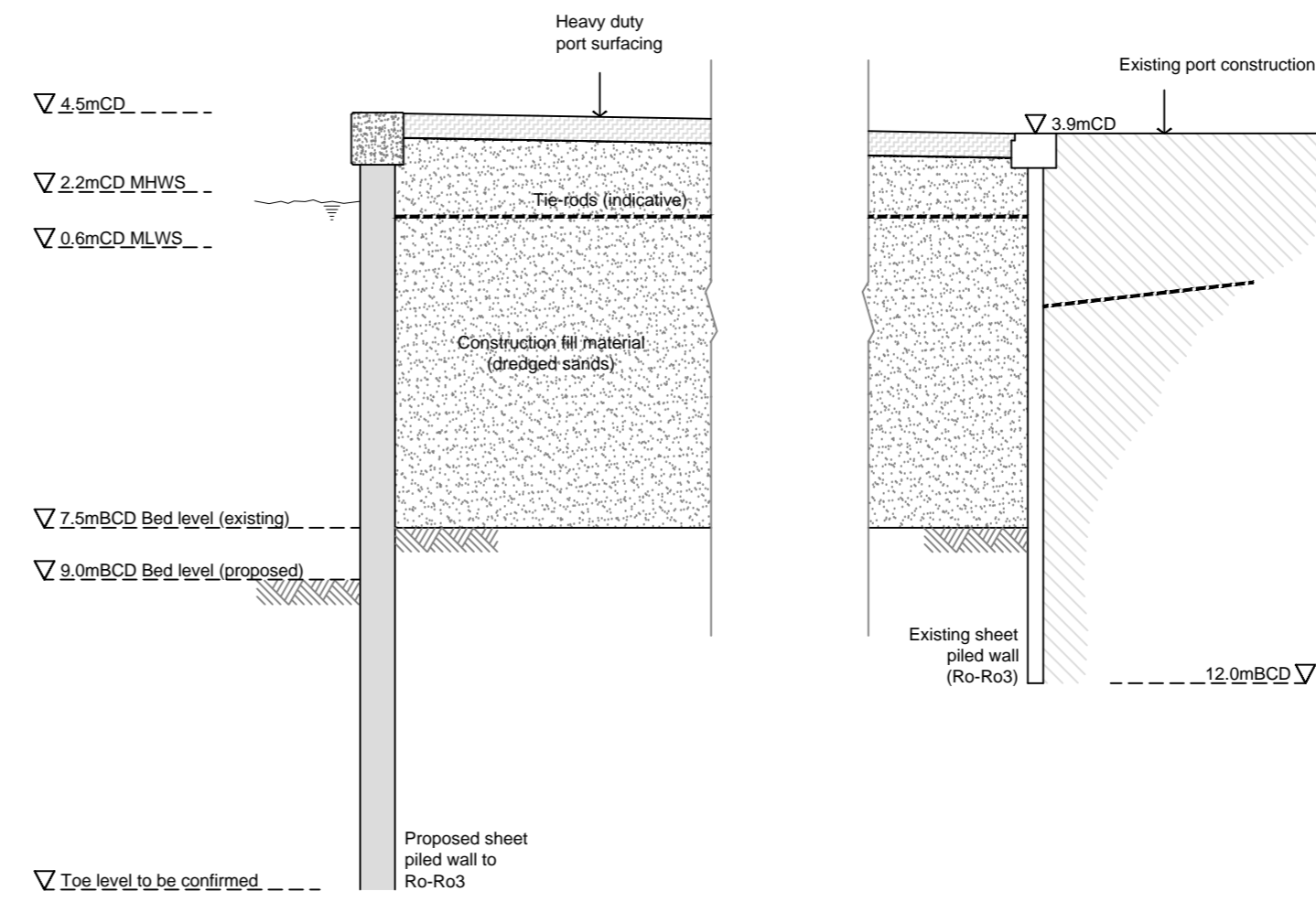
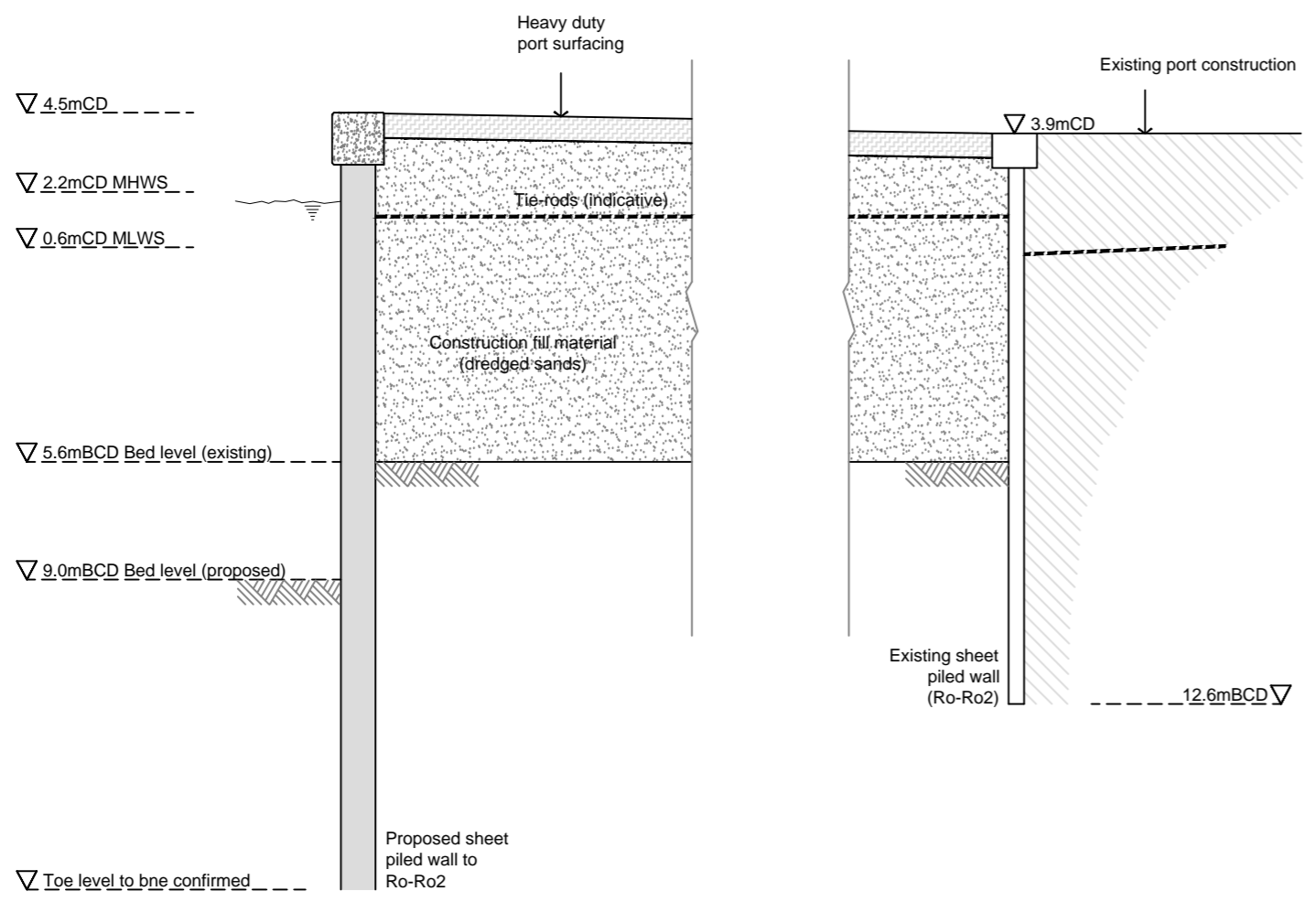
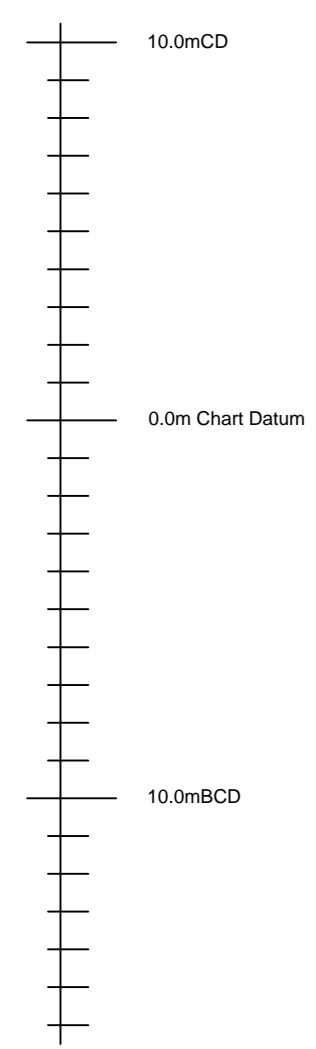
I HEREBY CERTIFY THAT THESE ARE THE DEPOSITED PLANS AND SECTIONS REFERRED TO IN ARTICLES 3 AND 4 OF THE POOLE HARBOUR (WORKS) REVISION ORDER 2015

DATE..... SIGNED.....

CHIEF EXECUTIVE OF THE MARINE MANAGEMENT ORGANISATION

**Section 6-6
Scale 1:200**

**Section 7-7
Scale 1:200**



revision amendment date

POOLE HARBOUR COMMISSIONERS

The Poole Harbour (Works) Revision Order 2015 PHASE 5 WORKS	drawn pba
	date 20.01.2014
	scale as stated @ A2
Andy Ramsbottom MSc CEng MICE Harbour Engineer Harbour Office, 20 New Quay Road Hamworthy, Poole, Dorset. BH15 4AF	drawing no. HRO5

phc