



31 May 2016

Year: 2016 Week: 21

In This Issue:

- Key Messages.
- Weekly summary.
- Total contacts.
- Syndromic indicators.
- Notes and caveats.
- Further information.
- Acknowledgements.

Key messages

Data to: 30 May 2016

Nothing new to report.

Syndromic indicators at a glance:

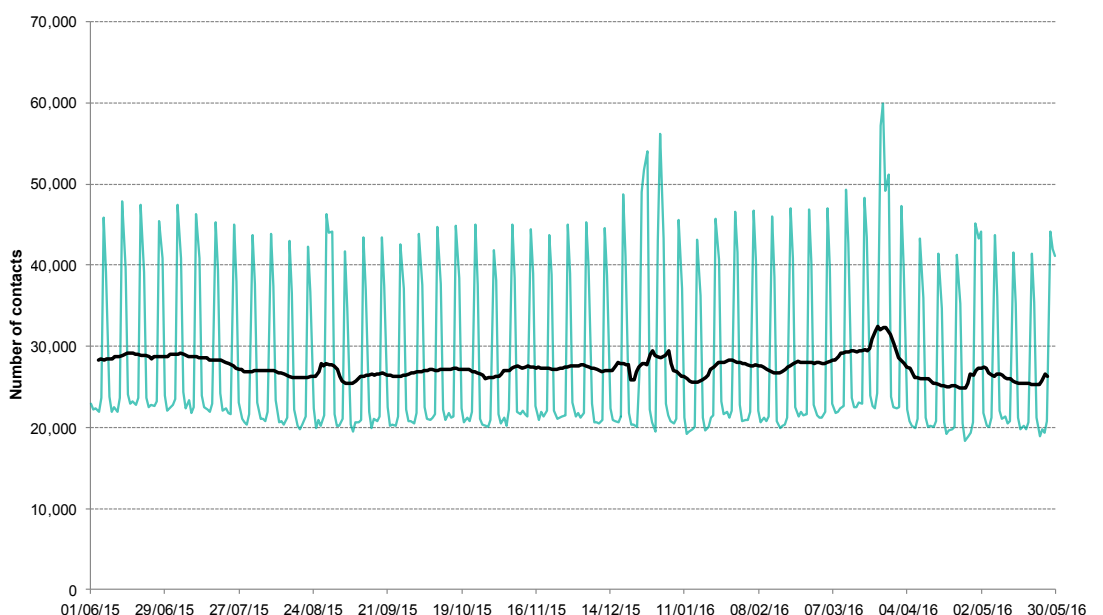
Number of contacts and percentage of Read coded contacts.

Key indicator	No. of contacts	% Week 21	% Week 20	Trend*
All OOH contacts, all causes	186,236			
Acute respiratory infection	12,074	13.97	13.83	↔↔
Influenza-like illness	108	0.12	0.12	↔↔
Bronchitis/bronchiolitis	110	0.13	0.13	↔↔
Difficulty breathing/wheeze/asthma	1,581	1.83	1.84	↔↔
Pharyngitis	124	0.14	0.12	↔↔
Gastroenteritis	3,515	4.07	4.60	↔↔
Diarrhoea	882	1.02	1.12	↔↔
Vomiting	1,208	1.40	1.66	↓
Myocardial infarction	875	1.01	1.12	↔↔
Heatstroke	1	0.00	0.00	↔↔

*Trend: reports on the trend seen over previous weeks in the percentage of Read coded contacts.

1: Total out-of-hours contacts:

Daily total number of out-of-hours and unscheduled contacts and 7 day average (adjusted for bank holidays).

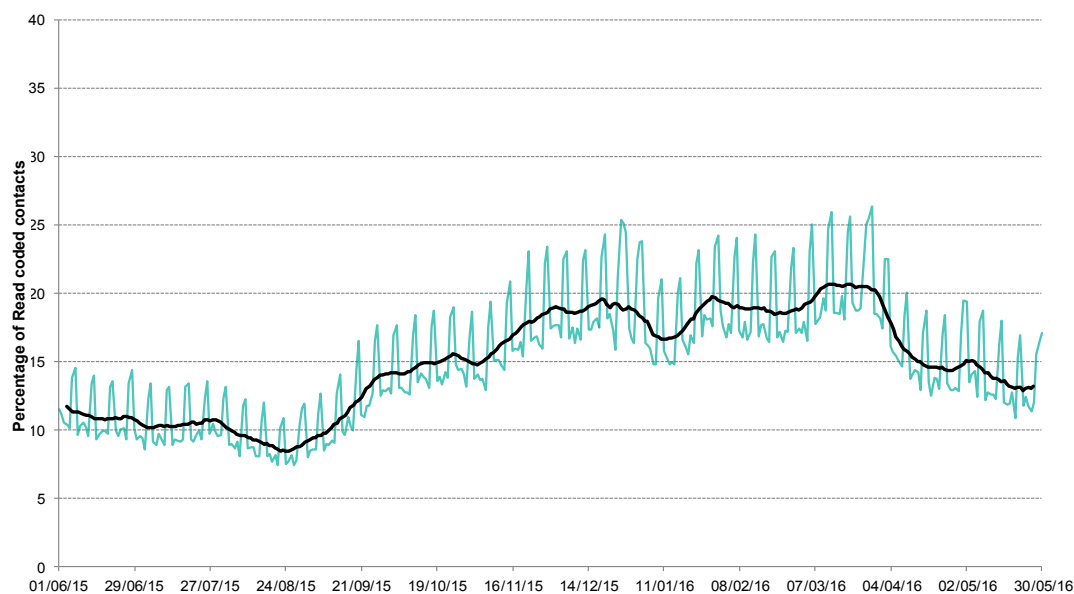


31 May 2016

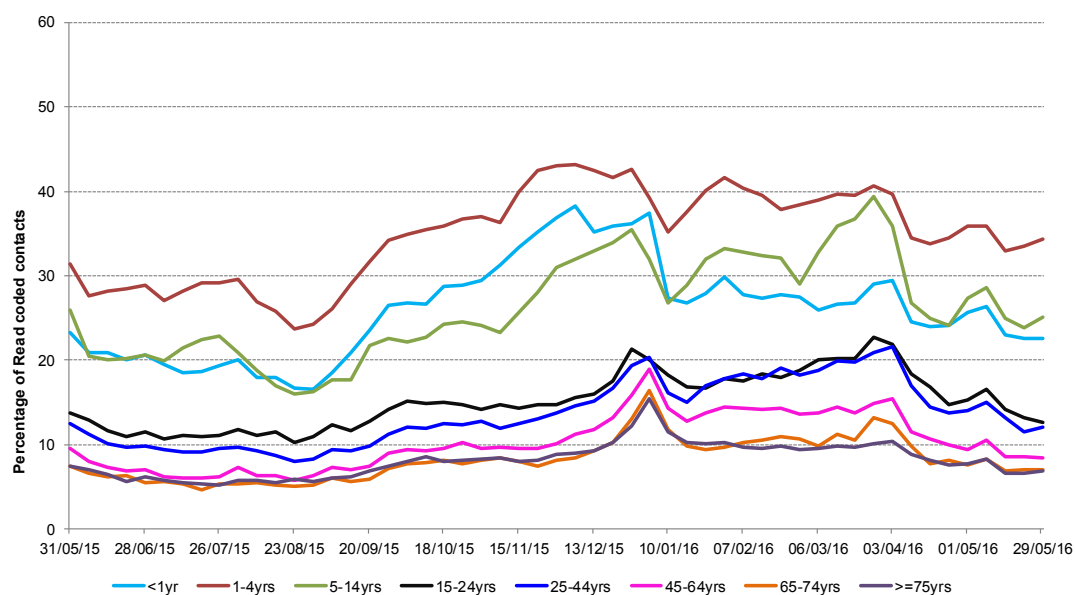
Year: 2016 Week: 21

2: Acute Respiratory Infection daily contacts.

Shown as a percentage of the total contacts with a Read code and as a 7 day average*.

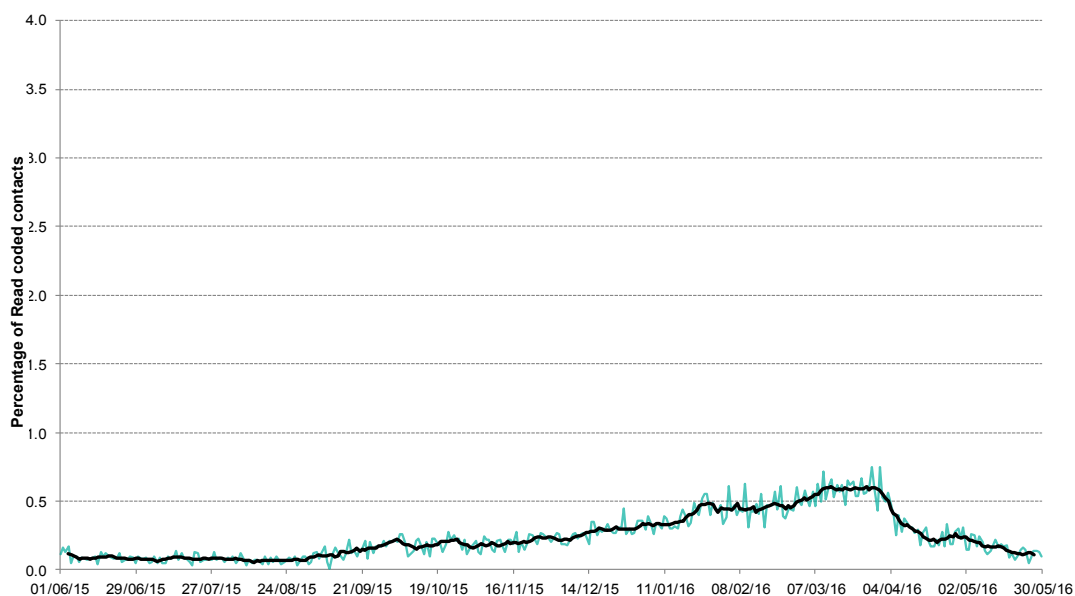


2a: Acute respiratory infection weekly contacts by age group.



3: Influenza-like illness daily contacts.

Shown as a percentage of the total contacts with a Read code and as a 7 day average*.

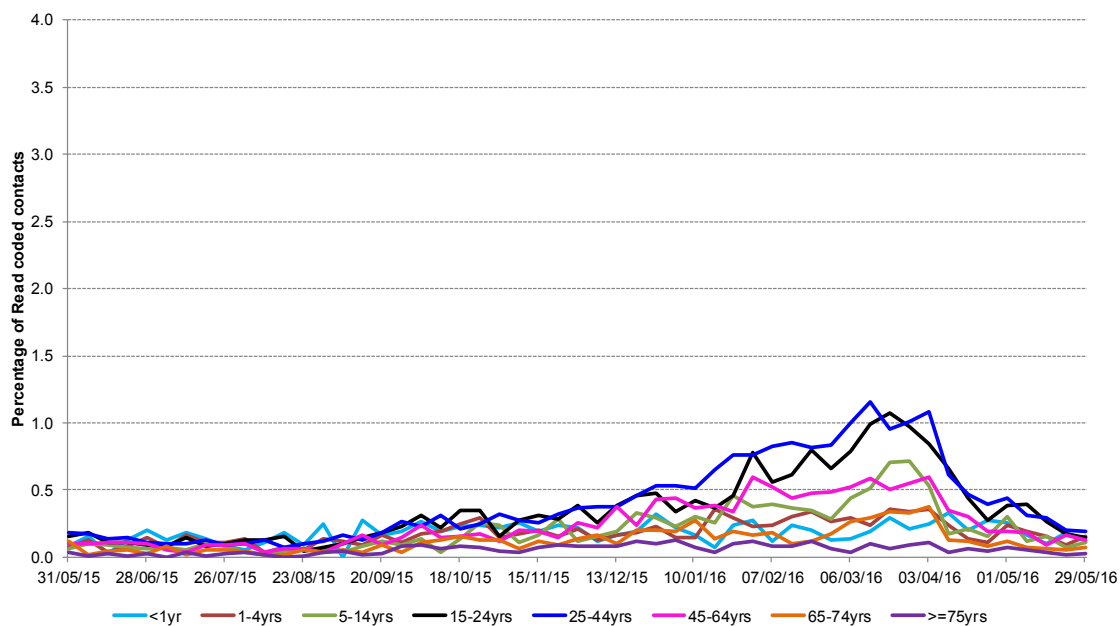


*7-day moving average adjusted for bank holidays.

31 May 2016

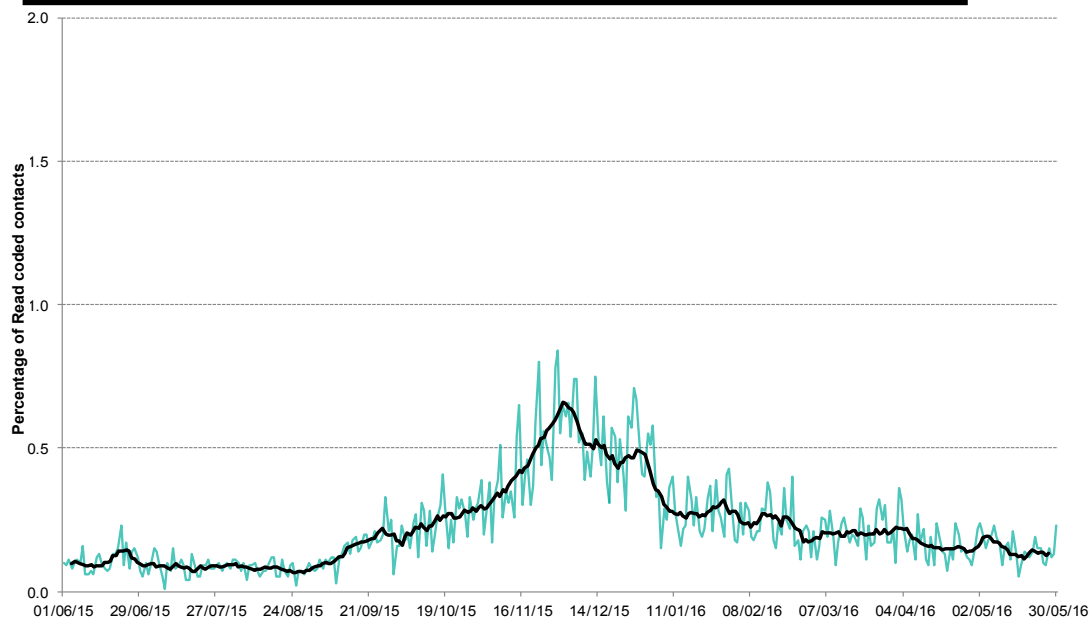
Year: 2016 Week: 21

3a: Influenza-like illness weekly contacts by age group.

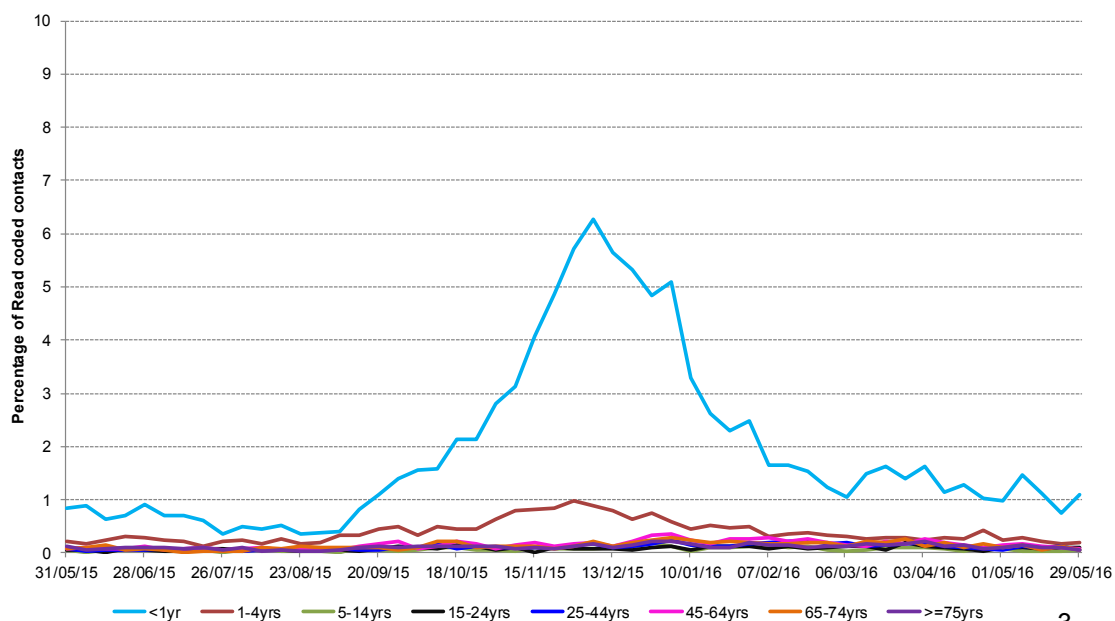


4: Bronchitis/ bronchiolitis daily contacts.

Shown as a percentage of the total contacts with a Read code and as a 7 day average*.



4a: Bronchitis/ bronchiolitis weekly contacts by age group.



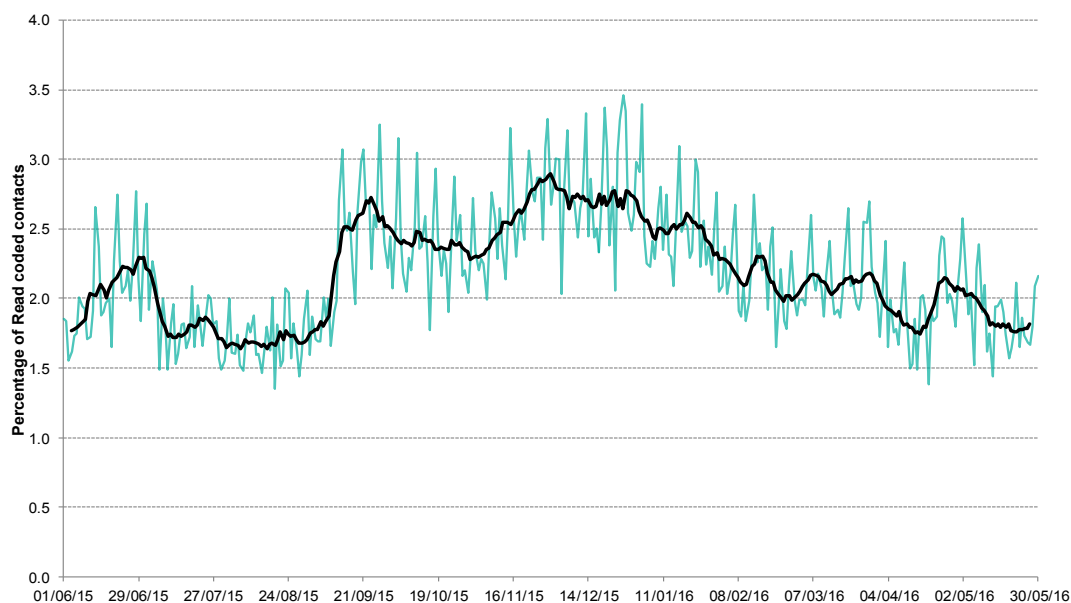
*7-day moving average adjusted for bank holidays.

31 May 2016

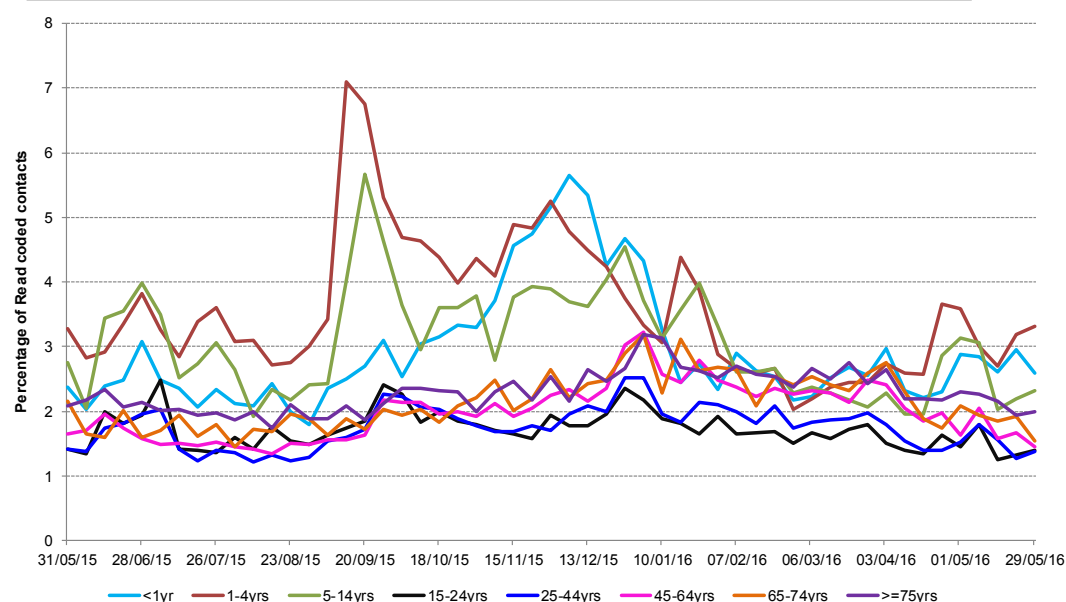
Year: 2016 Week: 21

**5: Difficulty breathing/
wheeze/asthma
daily contacts.**

Shown as a percentage of the total contacts with a Read code and as a 7 day average*.

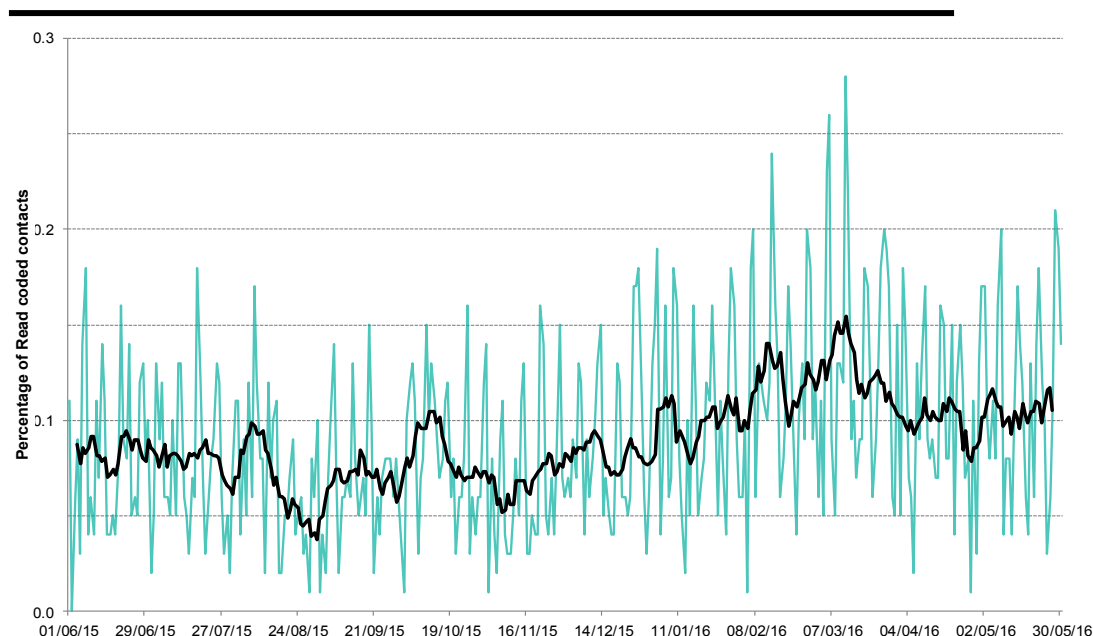


**5a: Difficulty
breathing/wheeze/
asthma weekly
contacts by age
group.**



**6: Acute pharyngitis
and persistent sore
throat.**

Shown as a percentage of the total contacts with a Read code and as a 7 day average*.



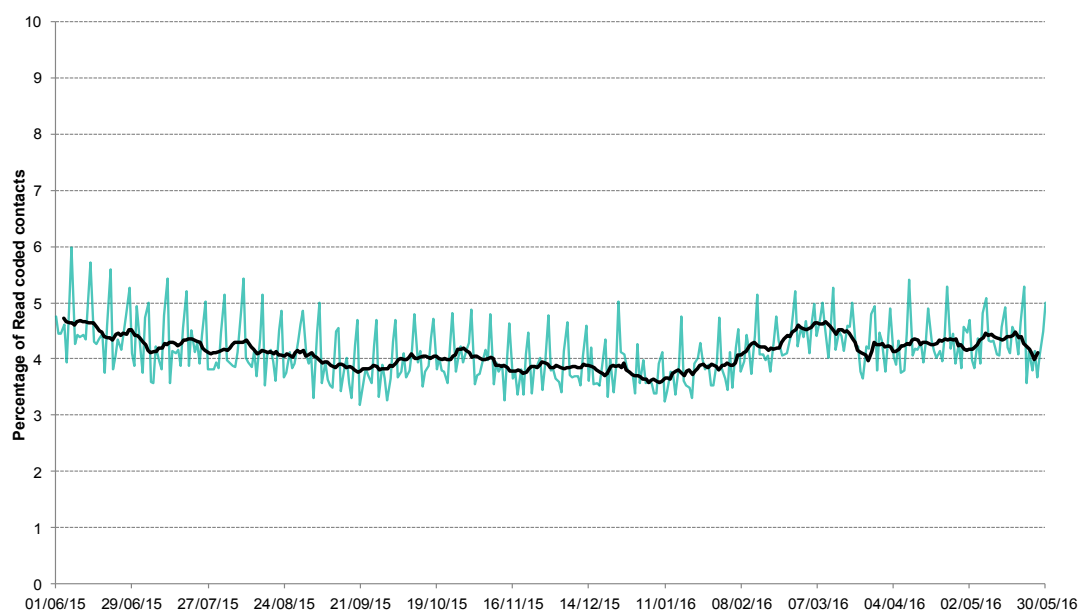
*7-day moving average
adjusted for bank
holidays.

31 May 2016

Year: 2016 Week: 21

7: Gastroenteritis daily contacts

Shown as a percentage of the total contacts with a Read code and as a 7 day average*.



Intentionally left blank

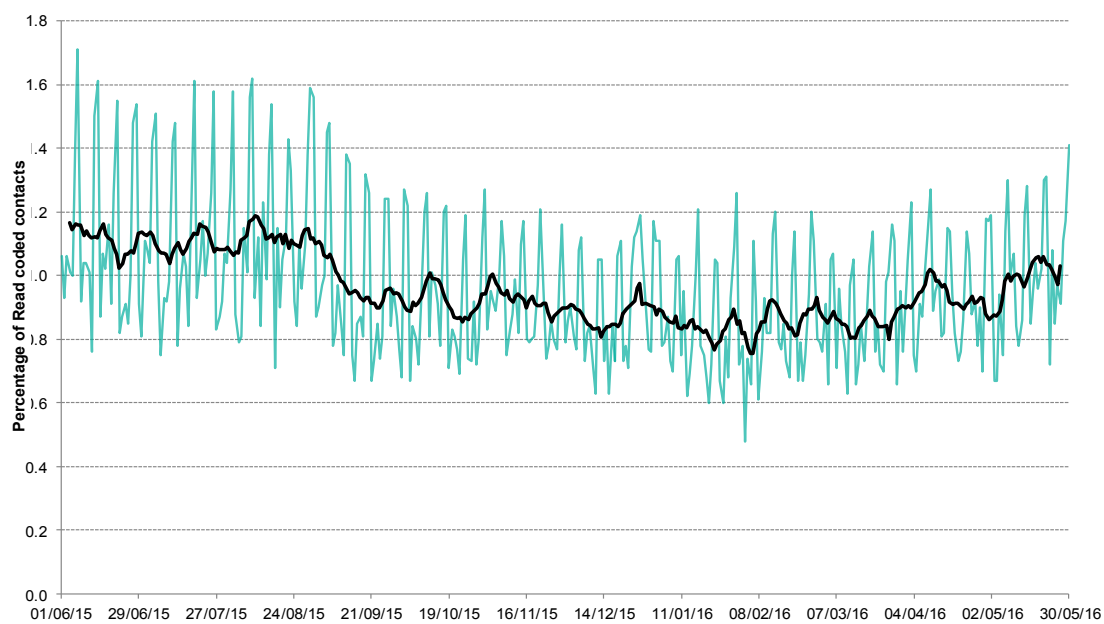
Intentionally left blank

31 May 2016

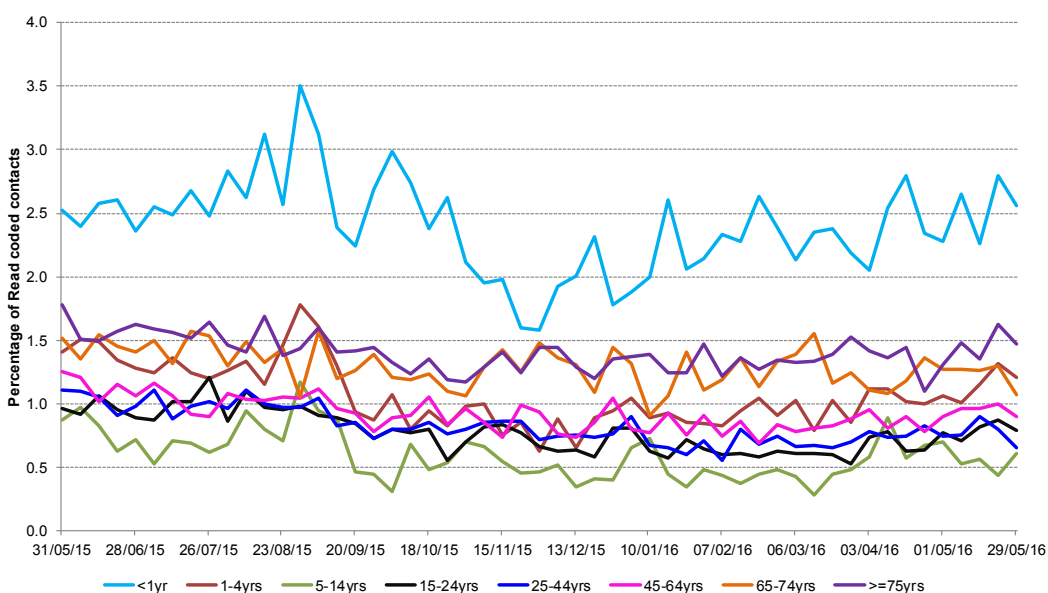
Year: 2016 Week: 21

8: Diarrhoea daily contacts.

Shown as a percentage of the total contacts with a Read code and as a 7 day average*.

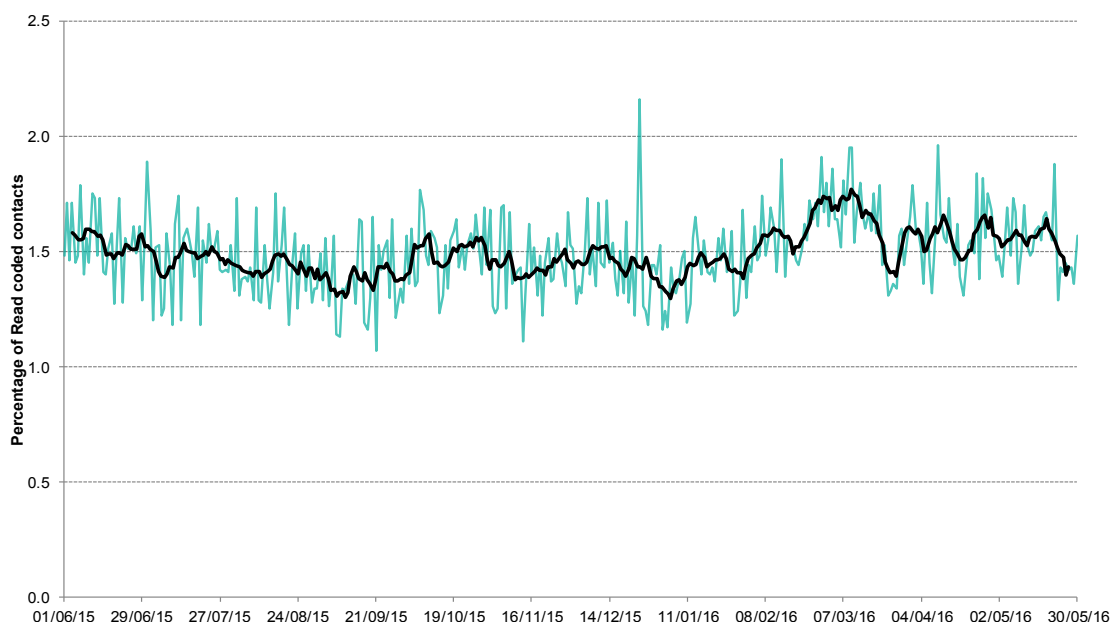


8a: Diarrhoea weekly contacts by age group.



9: Vomiting daily contacts.

Shown as a percentage of the total contacts with a Read code and as a 7 day average*.

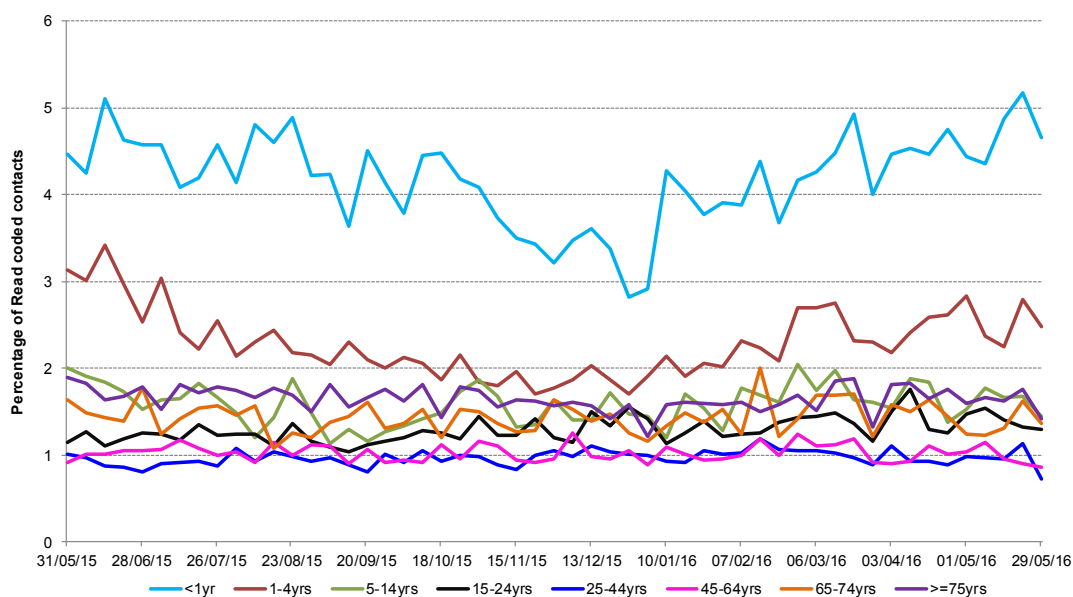


*7-day moving average adjusted for bank holidays.

31 May 2016

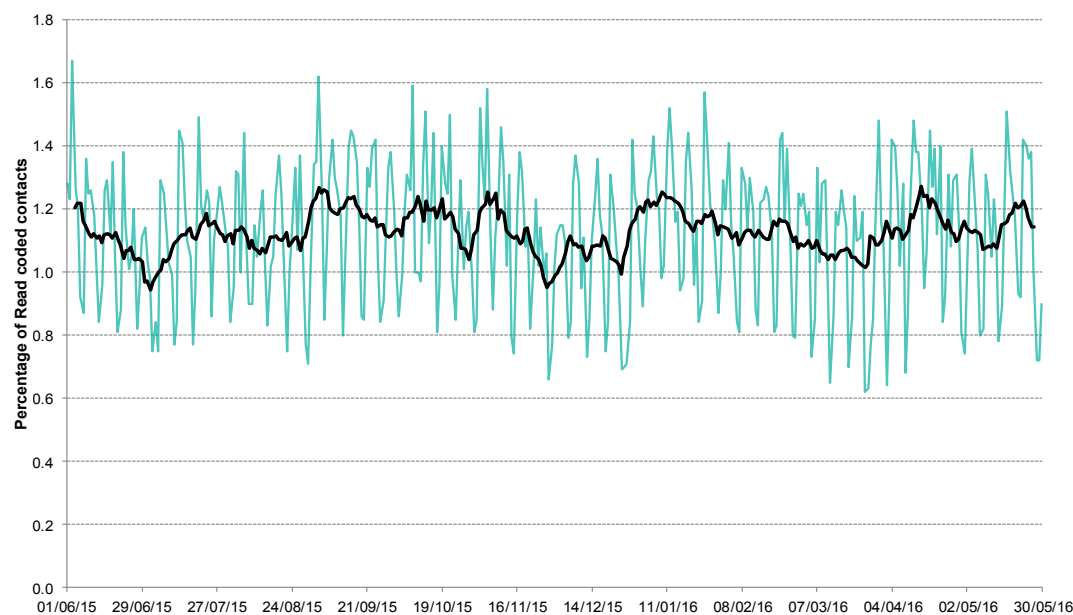
Year: 2016 Week: 21

9a: Vomiting weekly contacts by age group.



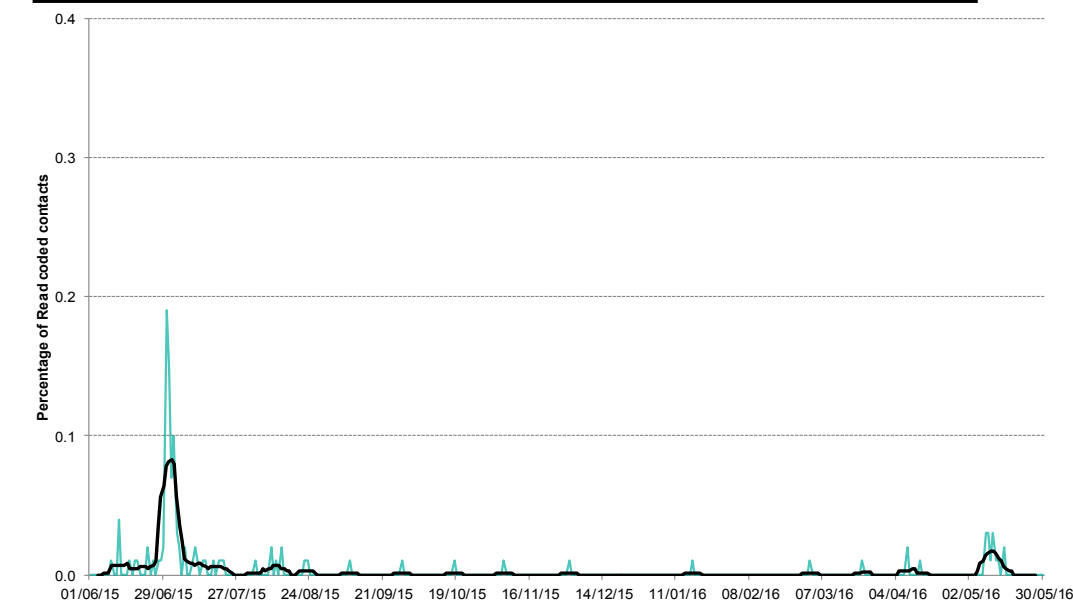
10: Myocardial Infarction daily contacts.

Shown as a percentage of the total contacts with a Read code and as a 7 day average*.



11: Heatstroke contacts

Shown as a percentage of the total contacts with a Read code and as a 7 day average*.



*7-day moving average adjusted for bank holidays.

31 May 2016

Year: 2016 Week: 21

Notes and caveats:

- This bulletin presents data from the Public Health England (PHE) GP Out-of-hours\Unscheduled Care Surveillance System (GP OOHSS).
- Fully anonymised data from GP out-of-hours (OOH) and unscheduled care service providers in England are being transferred to the PHE for analysis and interpretation by the PHE Real-time Syndromic Surveillance Team (ReSST).
- This new system supplements existing PHE syndromic surveillance systems by monitoring data on general practitioner consultations outside of routine surgery opening times (evenings, weekends and bank holidays) and unplanned contacts within NHS primary care.
- The key indicators presented within this bulletin are derived by grouping selected Read coded consultations.
- GP OOH consultation data are analysed on a daily basis to identify national and regional trends. A statistical algorithm underpins each system, routinely identifying activity that has increased significantly or is statistically significantly high for the time of year. Results from these daily analyses are assessed by the ReSST, along with analysis by age group, and anything deemed of public health importance is alerted by the team.

Further information:

The GP Out-of-Hours Surveillance System Bulletin can also be downloaded from the PHE Real-time Syndromic Surveillance website which also contains more information about syndromic surveillance:

<https://www.gov.uk/government/collections/syndromic-surveillance-systems-and-analyses>

Acknowledgements:

We are grateful to Advanced Health and Care and the GP out-of-hours and unscheduled care service providers who have kindly agreed to participate in this system.

PHE Out-of-Hours/Unscheduled Care Surveillance

Produced by: PHE Real-time Syndromic Surveillance Team
6th Floor, 5 St Philip's Place, Birmingham, B3 2PW

Tel: 0344 225 3560 > Option 4 > Option 2 **Fax:** 0121 236 2215

Web: <https://www.gov.uk/government/collections/syndromic-surveillance-systems-and-analyses>

Contact ReSST:

syndromic_surveillance@phe.gov.uk