

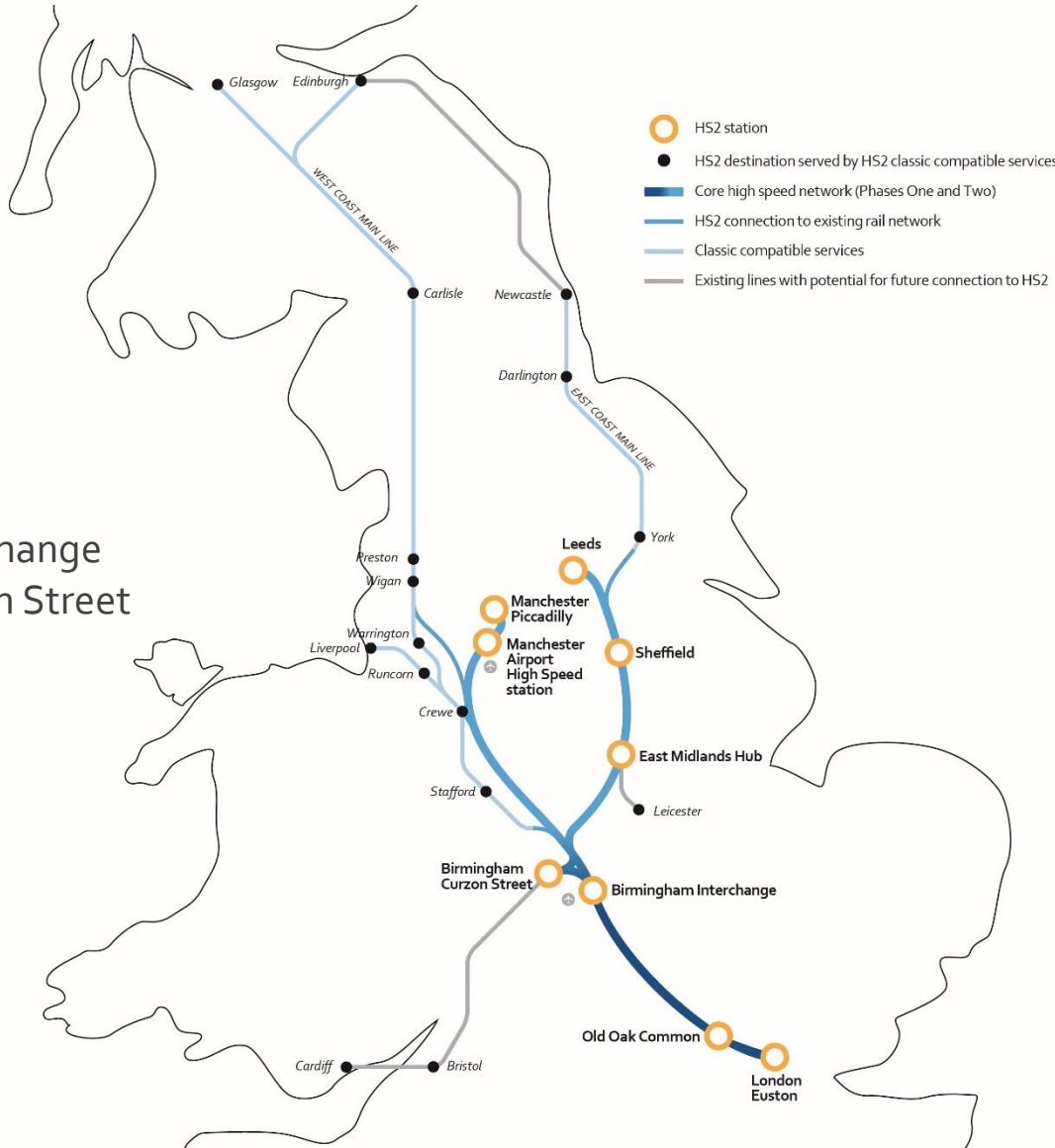
HS2 Phase One Planning Forum



Introduction to Phase One Infrastructure

Peter Curson, Project Director - Euston Station

HS2 route



Phase One

Stations:

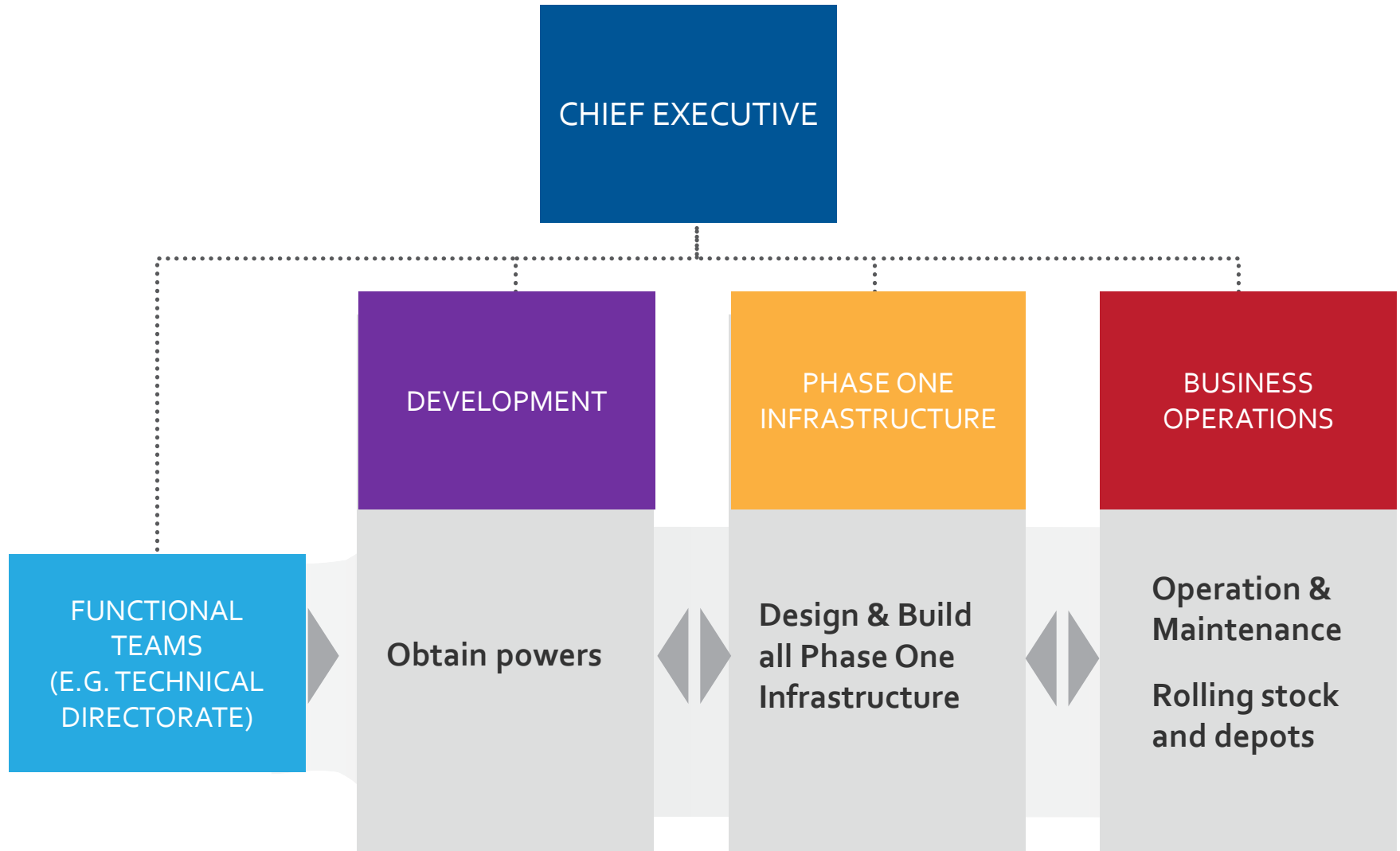
- Euston
- Old Oak Common
- Birmingham Interchange
- Birmingham Curzon Street

Phase Two

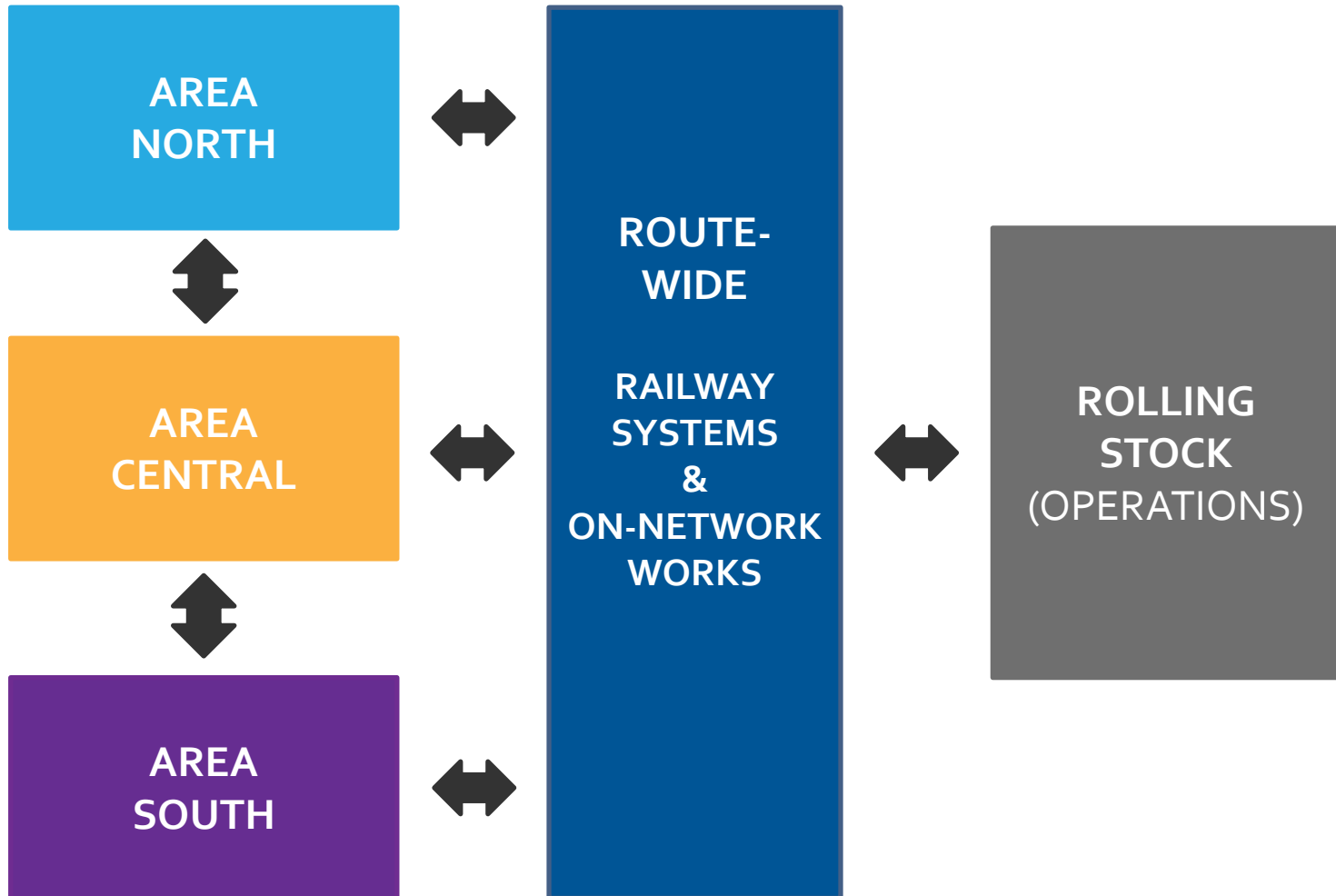
Stations:

- East Midlands Hub
- Sheffield
- Leeds
- Manchester Piccadilly
- Manchester Airport

HS2 organisation



Phase One Infrastructure



Key construction statistics

230km

ROUTE LENGTH

137km

TUNNELS/CUTTING

7 million

TREES/SHRUBS

128 mt

EXCAVATED
MATERIAL
(90% TO BE RE USED)

145

STRUCTURES
OVER BRIDGES

152

STRUCTURES UNDER
BRIDGES

31

MAIN COMPOUNDS
FOR CONSTRUCTION

299

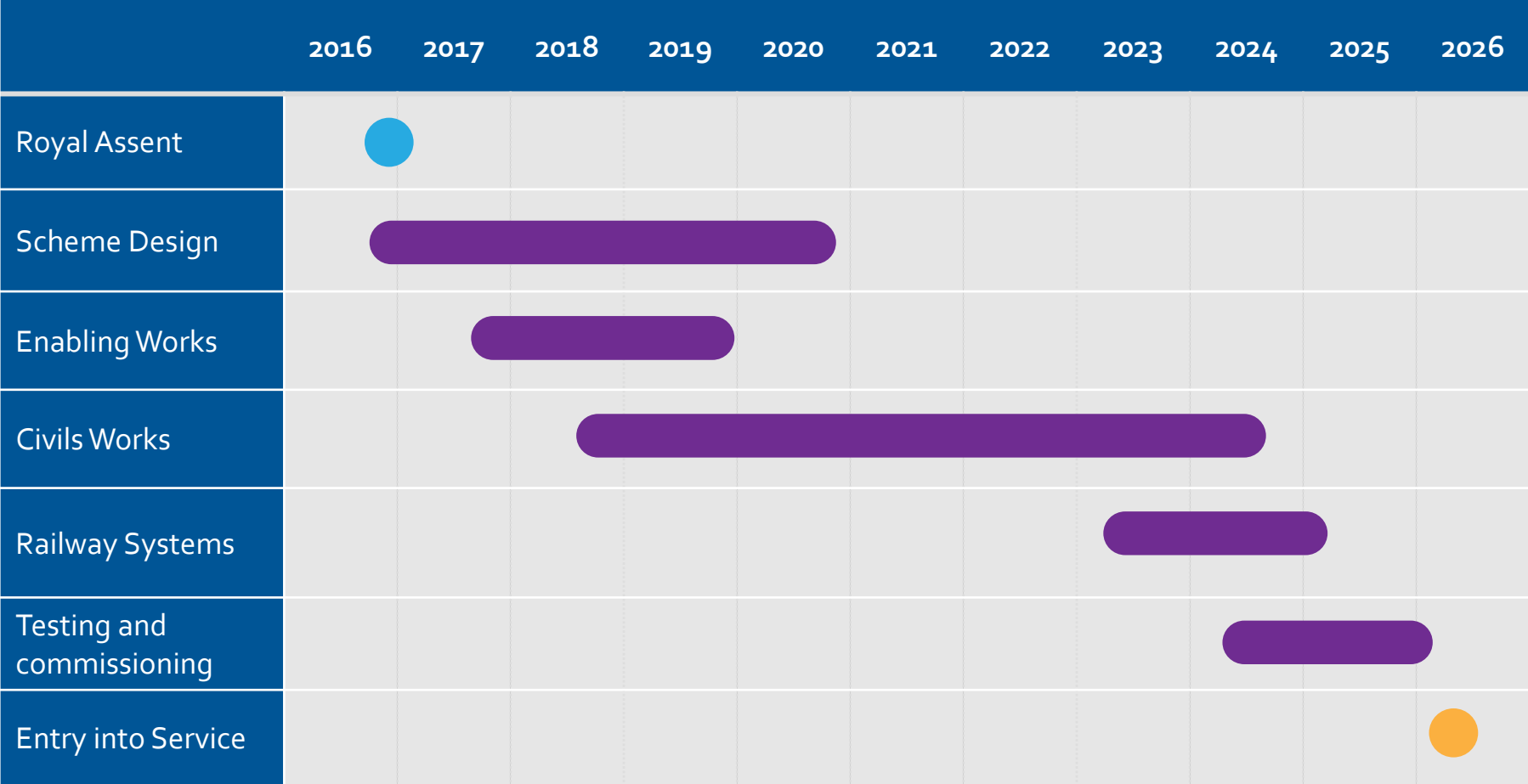
SATELLITE
COMPOUNDS

Enabling Works



- Ecology surveys
- Archaeology surveys & investigations
- Utility diversions
- Highway & footpath diversions
- Habitat creation & species translocation
- Construction compound establishment

Phase One: high-level delivery schedule



Our Draft Strategic Themes



Aspiring to the highest health and safety performance



Promoting sustainability and respect for the environment



Designed and delivered for the people



Creating Jobs and Skills



Connecting Cities



Integration with other transport



Delivering value for the UK

Questions