

# HS2 Colne Valley Regional Park Panel

Meeting No. 2

10 Dec 2015  
Phil King

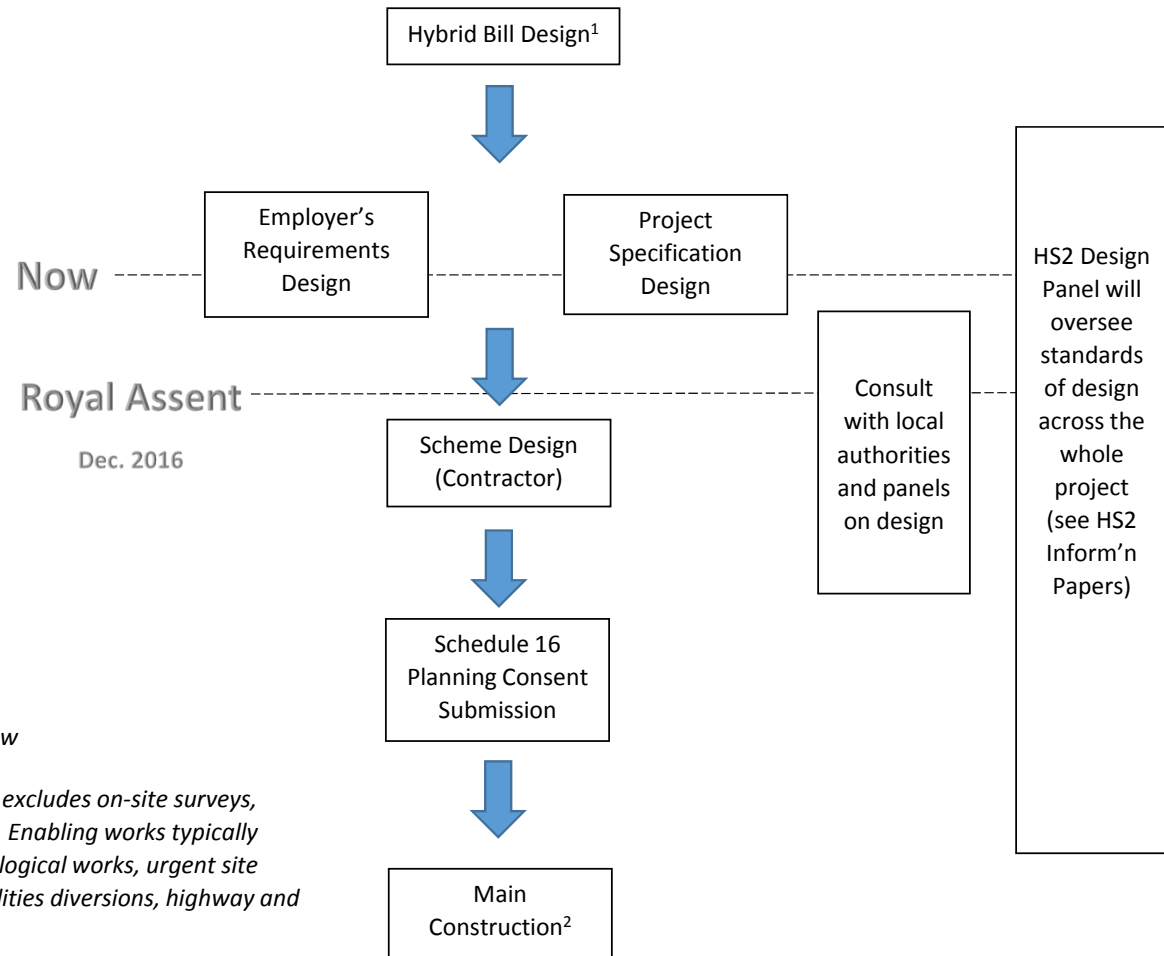
# Colne Valley Regional Park Panel – Agenda

#	Agenda Item
1.	Introductions
2.	Review minutes and actions from 16 Oct 2015
3.	Discussion of the draft Terms of Reference
4.	Colne Valley Regional Park mitigation proposals
5.	Panel Chair (Job description & Advert)
6.	Programme for reference design (engagement & timing)
7.	Forward Programme
8.	HS2 Ltd updates
9.	AOB
10.	Date of next meeting

## Item 4 – Colne Valley Mitigation Proposals

- Due to report back to Select Committee by January 2016 on the approach to further mitigation in the Colne Valley.
- Our proposed approach is to:
  - Fund the development of the Additional Mitigation Plan for the Colne Valley;
  - Once the Additional Mitigation Plan is complete, we will work with the Panel to deliver the key proposals in the Plan which will include making money available to support the delivery;
  - A budget will be allocated for the running costs of the Panel, which will include money to fund a full time officer for two years from appointment to develop the Additional Mitigation Plan;
  - Any savings within the budget for running costs will be made available to support the delivery of the Additional Mitigation Plan;

# Item 6 – Design Development and Engagement



## Notes

1. For the purpose of each stage, please see section on definitions below
2. Main Construction includes all the significant construction works. It excludes on-site surveys, ground sampling (GI) and enabling works, which commence earlier. Enabling works typically include: environmental mitigations (habitats and planting), archaeological works, urgent site demolitions and clearances, treatment of selected polluted land, utilities diversions, highway and footpath diversions, noise protection.

## Item 6 – Design Development and Engagement Cont.

- Employer's reference design due for completion end of January 2016;
- The ERD output will inform the Specifications for the main works contractors;
- Invitations to tender for main works civils contracts are likely to be sought from spring 2016 onwards;
- Technical specifications for key design elements and HS2 works in general are being developed to inform the tender process (for example it may set the criteria for 'span' widths for the Colne Valley Viaduct);

## Item 6 – Design Development and Engagement Cont.

- At the meeting of the Panel in January 2016 HS2 Ltd will:
  - provide an update on the specifications likely to be incorporated into the tender information relating to the Colne Valley Viaduct;
  - Present on the emerging design approach on bridges and viaducts;
  - Seek comments on this approach from the Panel;
- Comments of the Panel will be taken into consideration before HS2 finalises the technical specifications



## Item 7 – Colne Valley Panel Forward Programme

# Colne Valley Regional Park Panel – Draft Forward Programme – December 2015

2015/2016	Colne Valley Regional Park Panel Draft Agenda Points
<b>Dec 10th</b>	<ul style="list-style-type: none"> <li>• Finalise Terms of Reference and Chair JD.</li> <li>• Review of Draft Engagement Strategy.</li> <li>• Update on MOU and Funding Arrangements.</li> <li>• Reference Design Update and Timetable for engagement on Technical Requirements</li> <li>• Forward Programme Discussion and plan setting.</li> </ul>
<b>Jan 20th</b>	<ul style="list-style-type: none"> <li>• Chair Recruitment Update.</li> <li>• Finalise Engagement Strategy.</li> <li>• Aims and Objectives of Additional Mitigation Document (Including Scope and Area of Coverage and who will undertake work).</li> <li>• Define areas for the Additional Mitigation Document including approach to document prep.</li> <li>• Presentation on Design Approach for Bridges and Viaducts (HS2 Technical Standards)</li> </ul>
<b>Mar 2nd</b>	<ul style="list-style-type: none"> <li>• Review of Brief for Additional Mitigation Document and timescales for delivery (including defined areas).</li> <li>• Agreement on next steps for Additional Mitigation Document</li> <li>• Update and discussion on Programme of HS2 Works in Colne Valley.</li> <li>• Feedback on Design Approach for Viaduct</li> </ul>
<b>Apr 13th</b>	<ul style="list-style-type: none"> <li>• Update on progress of Additional Mitigation Document.</li> <li>• Discussion/Workshop on design briefs for given areas.</li> </ul>



# Colne Valley Regional Park Panel – Forward Programme of Activities

		Dec	Jan	Feb	Mar	Apr	May	Jun	Jul	Aug	Sep	Oct	Nov	Dec
Forum Business	Terms of Reference	Second Draft	Agree	<i>In Place &amp; Review as necessary</i>										
	Forward Plan		Develop and Agree		<i>Review as appropriate</i>									
	Chair Recruitment	Agree JD	Advertise & Interview	Interview	In place	<i>In Place</i>								
	Engagement Strategy	Discussion	1st Draft		Final Draft	<i>Implement &amp; Review as Necessary</i>								
	Website		In Place	<i>In Place</i>										
Forum Outputs	Additional Mitigation Plan		Discuss and Agree Brief			Agree areas for site design briefs	Production			Public Engagement and Consultation	Final Review	Publication		
	Design approach to Viaducts and bridges		Share Design Approach Document	Receive Comments from Panel	Finalise document				Panel Members advise on important aspects to be bought out in CVV design.					



## Item 8 – HS2 Updates

- HS2 Design Policy – Update on Key Design Elements;
- AP5;
- Committee Programme;