

**DES243: TIS – Interface Between CHIEF and ECN+**

---

**DES243: TIS - Interface Between CHIEF and ECN+**

## Abstract

This Technical Interface Specification defines the application level interactions and the data exchanged between CHIEF and the HMRC ECN+ (via the HMRC Common Core Components). ECN+ provides the interface with other Member States for the Export Control System (ECS).

This issue defines the ECS 2 messages to be supported from CHIEF Release 31A.

**Origin/Author:** John Walker

**Approved By:** Glen Robe

**Date Approved:** 11/01/2016

**Status:** Approved

Prepared by: HMRC (CDIO (C&IT) – CHIEF)  
Dukes Court  
Duke Street  
Woking  
GU21 5XR  
03000 577107

**DES243: TIS – Interface Between CHIEF and ECN+**
**Contents**

1. Introduction .....	4
1.1 Scope .....	4
2. Business Overview.....	5
2.1 Normal Business Process for Indirect Exports from the UK.....	6
2.1.1 Declaration Processing at the UK Office of Export .....	6
2.1.2 Arrival and Departure Processing at the Office of Exit.....	7
2.1.3 Exit Results Processing at the UK Office of Export .....	7
2.2 Business Process for the Diversion of a UK Direct Export.....	7
2.2.1 Declaration.....	8
2.2.2 Arrival of Goods at an Office of Exit in Another Member State .....	8
2.2.3 Exit of Goods .....	9
2.3 Indirect Export Cancellation – normal business process .....	9
2.4 Indirect Export Amendment – normal business process.....	9
2.5 Error Handling.....	10
3. IE998B (Anticipated Export Record) Message Structure .....	11
3.1 CHIEF Mapping .....	11
3.2 IE998B Document Type Definition .....	17
3.3 Example IE998B .....	22
4. IE518A (Exit Results) Message Structure .....	25
4.1 CHIEF Mapping .....	25
4.2 IE518A Document Type Definition .....	26
4.3 Example IE518 .....	28
5. IE510A (Cancellation Notification) Message Structure .....	29
5.1 CHIEF Mapping .....	29
5.2 IE510A Document Type Definition .....	30
5.3 Example IE510 .....	31
6. Data Elements .....	32
7. Glossary and References.....	33
7.1 Glossary .....	33
7.2 References .....	34
Document Control .....	36



**DES243: TIS – Interface Between CHIEF and ECN+**

---

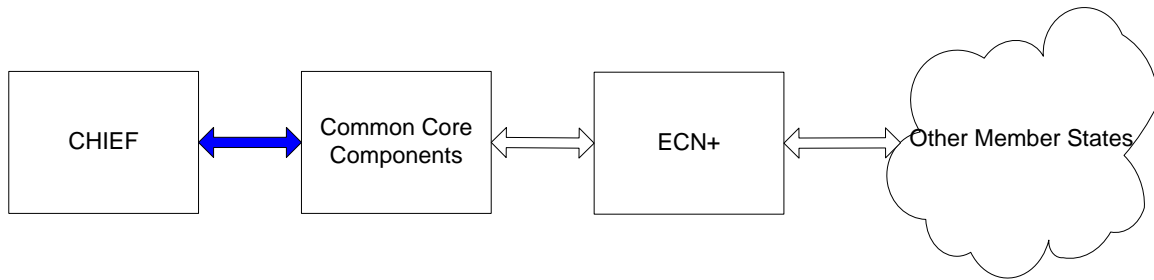
Statement of Confidentiality ..... 37

**DES243: TIS – Interface Between CHIEF and ECN+**

---

**1. Introduction****1.1 Scope**

This Technical Interface Specification defines the application level interactions and the data exchanged between CHIEF and the HMRC ECN+ via the HMRC Common Core Components as depicted in **Figure 1** below. ECN+ provides the interface with other Member States for the Export Control System (ECS).



**Figure 1. Overview of CHIEF Interface with ECN+**

The lower level interface with the HMRC Common Core Components is specified in Reference [2].

END OF SECTION 1

**DES243: TIS – Interface Between CHIEF and ECN+**

---

**2. Business Overview**

The purpose of ECS is to:

- provide greater assurance that Indirect Exports (i.e. exports that leave the EU via another Member State) have actually exited the EU, and
- support Safety and Security information in declarations.

The EU expects the requirements for Indirect Exports to be met partly by a National Export System (NES) and partly by a National Export Control Application (NECA).

ECN+, a system available from the EU for use by a Member State, provides the necessary National Export Control Application (NECA) functionality required for ECS Phase 2. Member States can use ECN+ or integrate their own National Export System (NES) with ECN+ or provide their own system.

For the UK acting as Office of Export, CHIEF provides the NES functionality, while ECN+ provides the NECA functionality<sup>1</sup>. This technical interface specification defines the messages that are exchanged between CHIEF and ECN+ to handle indirect exports.

The end-to-end process for the normal handling of indirect Exports from the UK is described in **Section 2.1**.

The end-to-end process for the diversion of UK direct exports is described in **Section 2.2**.

Cancellation of an entry is described in **Section 2.3** and amendment in **Section 2.4**. Additional information on error handling is given in **Section 2.5**.

The EU messages have an identifier (e.g. IE510) which is followed by a character to allow different versions to be defined. The IE998 is at version “B” for the Safety and Security changes but the other messages identified in this document are still at version “A”. This document refers to the messages without the version suffix except where a specific message is being specified or a specific version referenced.

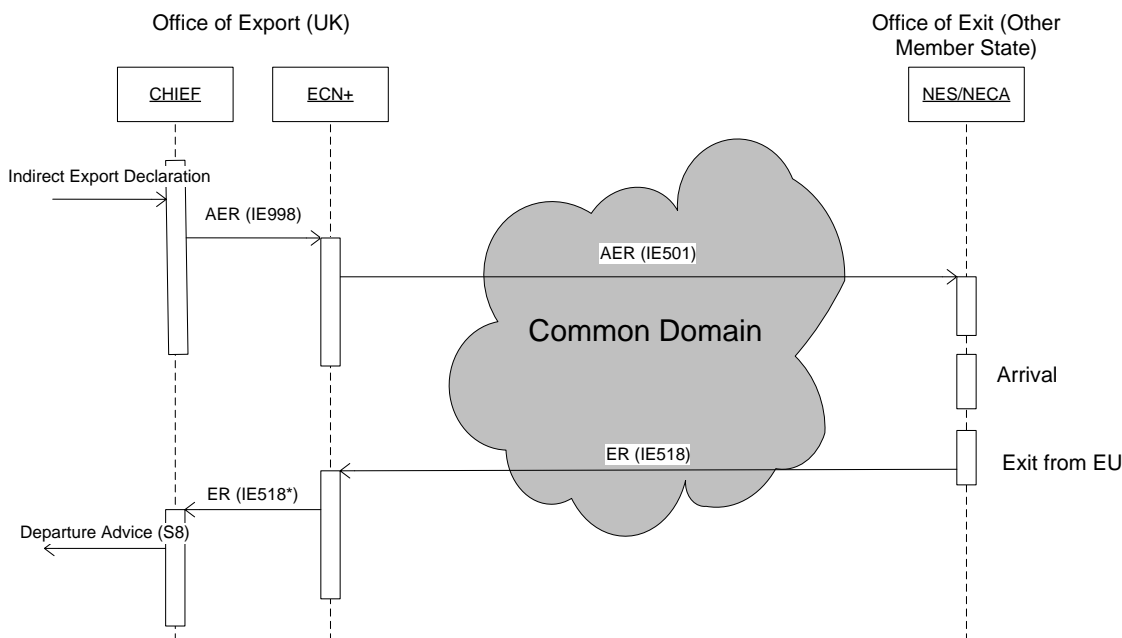
---

<sup>1</sup> For the UK acting as Office of Exit, ECN+ provides both the NES and NECA functionality. This is not covered in this document.

DES243: TIS – Interface Between CHIEF and ECN+

2.1 Normal Business Process for Indirect Exports from the UK

The normal end-to-end message flow for indirect exports from the UK is shown in Figure 2 below.



\* Some details in the IE518 are removed before forwarding it to CHIEF.

Figure 2. Indirect Export Message Flow

In summary an Anticipated Export Record (AER) message giving details of an indirect export is sent from the Office of Export to the Office of Exit. When all the goods have exited the EU, an Exit Results (ER) message is sent from the Office of Exit to the Office of Export, where confirmation of exit is forwarded to the trader as required.

In more detail this consists of the steps described in the following sub-sections.

2.1.1 Declaration Processing at the UK Office of Export

The trader submits an indirect export declaration to CHIEF, the UK’s National Export System (NES).

This declaration is processed by CHIEF and following clearance from the Office of Export an Anticipated Export Record (AER) is sent by CHIEF to ECN+, the UK’s National Export Control Application (NECA). The AER is sent as an IE998 message (see Section 3) which ECN+ forwards to the Office of Exit as an IE501 message.

The IE501 is received by the NES/NECA responsible for the Office of Exit.

## DES243: TIS – Interface Between CHIEF and ECN+

---

### 2.1.2 Arrival and Departure Processing at the Office of Exit

The appropriate authority notifies the local NES/NECA that the goods have arrived at the Office of Exit.

The local Customs allow the goods to exit from the EU.

When all the goods have exited, the appropriate authority notifies the local NES/NECA that the goods have exited from the EU.

The local NES/NECA sends an Exit Results (ER) message (IE518) to the Office of Export in the UK.

### 2.1.3 Exit Results Processing at the UK Office of Export

ECN+ receives the ER message and passes it on to CHIEF with a reduced dataset.

CHIEF records the exit details and notifies the submitting trader as required with an S8 – Movement Departure Advice. When exit details confirm the goods have exited the EU, CHIEF records UK Departure if this has not yet been recorded.

Note that there is a facility to invoke Exit Results processing directly via a CHIEF HCI transaction, A518, should ECN+ be unable for any reason to provide the exit details via an IE518 message.

## 2.2 Business Process for the Diversion of a UK Direct Export

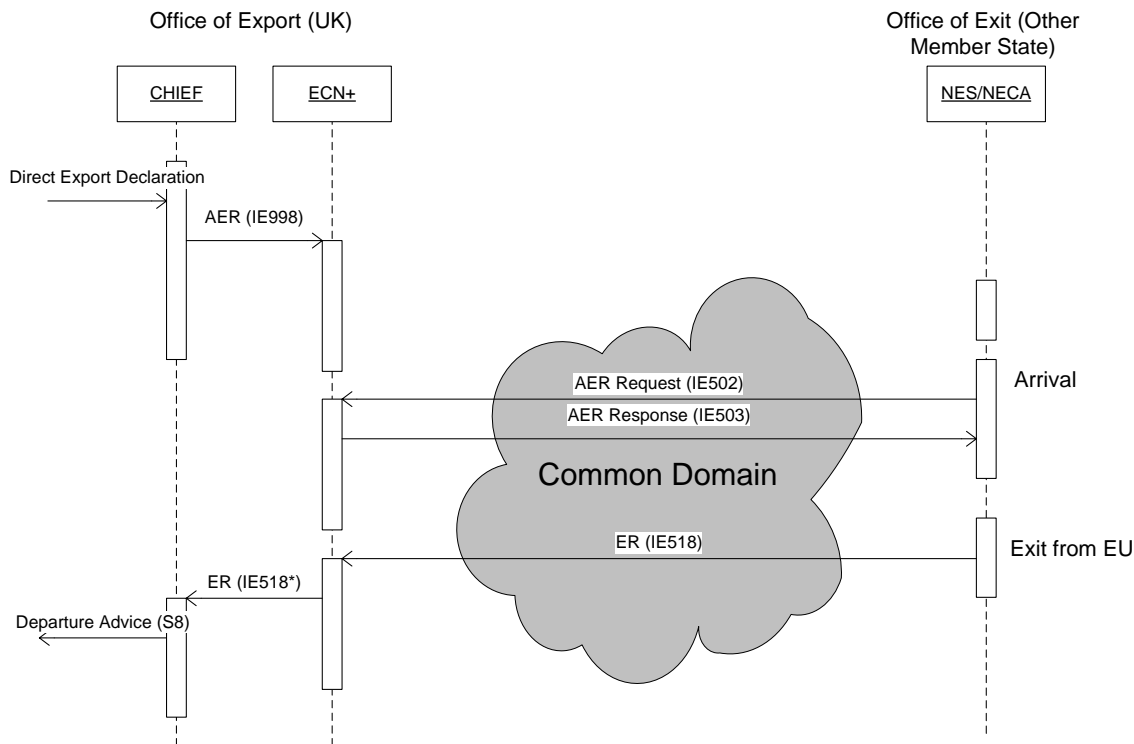
ECS supports the diversion of an export consignment from the intended Office of Exit to another office, potentially in another Member State.

Diversion from one Office of Exit to another in the same Member State can be handled without reference back to the Office of Export. ECN+ supports the diversion of an export from the anticipated Office of Exit in one Member State to an office in another Member State.

So that ECN+ can handle diversion of a direct export from the UK to an indirect export via another Member State, CHIEF sends details of direct exports to ECN+.

The message flow for the diversion of a direct UK export is shown in [Figure 3](#) below.

**DES243: TIS – Interface Between CHIEF and ECN+**



\* Some details in the IE518 are removed before forwarding it to CHIEF.

**Figure 3. UK Direct Export Diversion**

In summary the declaration is made as a direct export. As the Office of Exit is unknown the information is not immediately forwarded to the Office of Exit. When the goods arrive at the Office of Exit, then the declaration information is requested and retrieved from ECN+ at the Office of Export. Exit then follows as in the normal way.

In more detail this consists of the steps described in the following sub-sections.

**2.2.1 Declaration**

The trader submits a direct export declaration to CHIEF (NES) without declaring an Office of Exit.

As for an indirect export (see Section 2.1.1), on clearance an AER (IE998) message is sent to ECN+ with a dummy Office of Exit. This is so that ECN+ can handle diversions without involving CHIEF.

**2.2.2 Arrival of Goods at an Office of Exit in Another Member State**

The arrival of goods at an Office of Exit in another Member State is notified to the local NES/NECA. Since the system has not received an AER (IE501) it requests the information from the UK Office of Export with an AER Request (IE502) message.

ECN+ returns an AER Response (IE503) message.



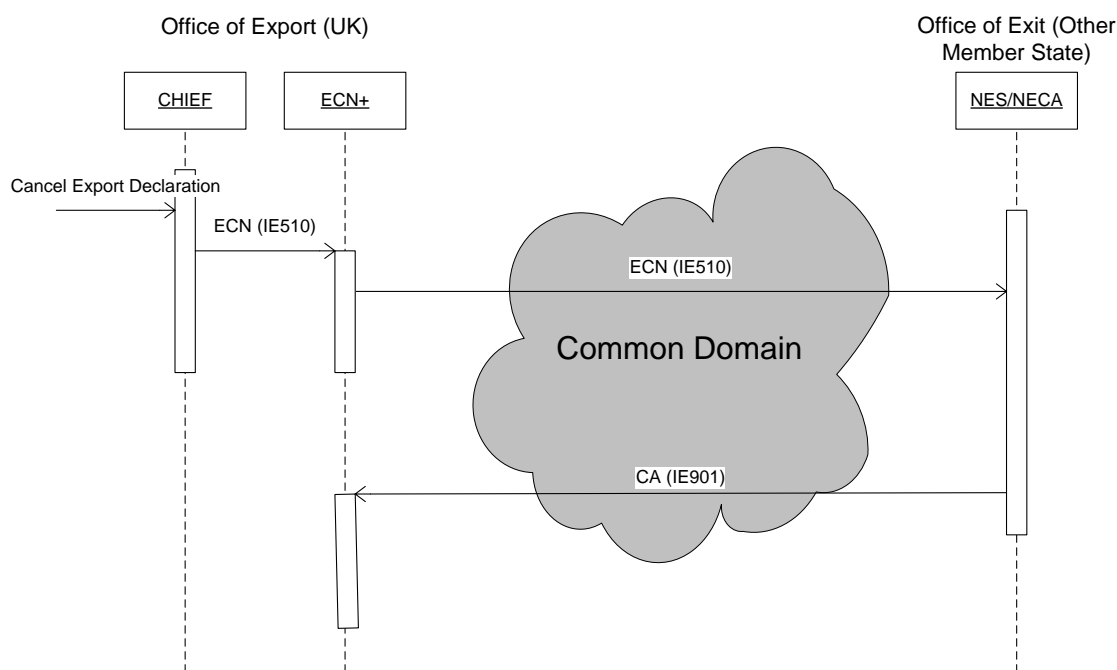
## DES243: TIS – Interface Between CHIEF and ECN+

### 2.2.3 Exit of Goods

The business process for the exit of the goods is as described in Sections 2.1.2 and 2.1.3 for indirect export.

### 2.3 Indirect Export Cancellation – normal business process

If an indirect export declaration is cancelled or terminated after an AER (IE998) has been sent to ECN+, CHIEF sends an Export Cancellation Notification (IE510) message to ECN+ which forwards the IE510 to the Office of Exit and hence to the NECA/NES in the other Member State; a Cancellation Acknowledgement (IE901) is sent to ECN+ as shown in [Figure 4](#) below.



**Figure 4. Cancellation of indirect export declaration**

CHIEF similarly informs ECN+ when a direct export is cancelled. In this case ECN+ only informs another Member State if the export has been diverted. As described in Section 2.2. CHIEF is not informed by ECN+ when a direct export arrives at an Office of Exit in another Member State.

### 2.4 Indirect Export Amendment – normal business process

If an indirect export declaration is amended in a way that changes the information in the IE998 message that has been sent to ECN+ then:

- CHIEF cancels the current MRN by sending an Export Cancellation Notification (IE510) message as described in Section 2.3.
- CHIEF allocates a new MRN and sends a new AER (IE998) message as described in Section 2.1.1.

[Note that if the declaration contained any ARC References, (see Section 3.1, Fields PREV-DOC-TYPE & PREV-DOC-REF), when previously sent to ECN+ then CHIEF will prohibit the amendment].

The message flow is shown in [Figure 5](#) below.

DES243: TIS – Interface Between CHIEF and ECN+

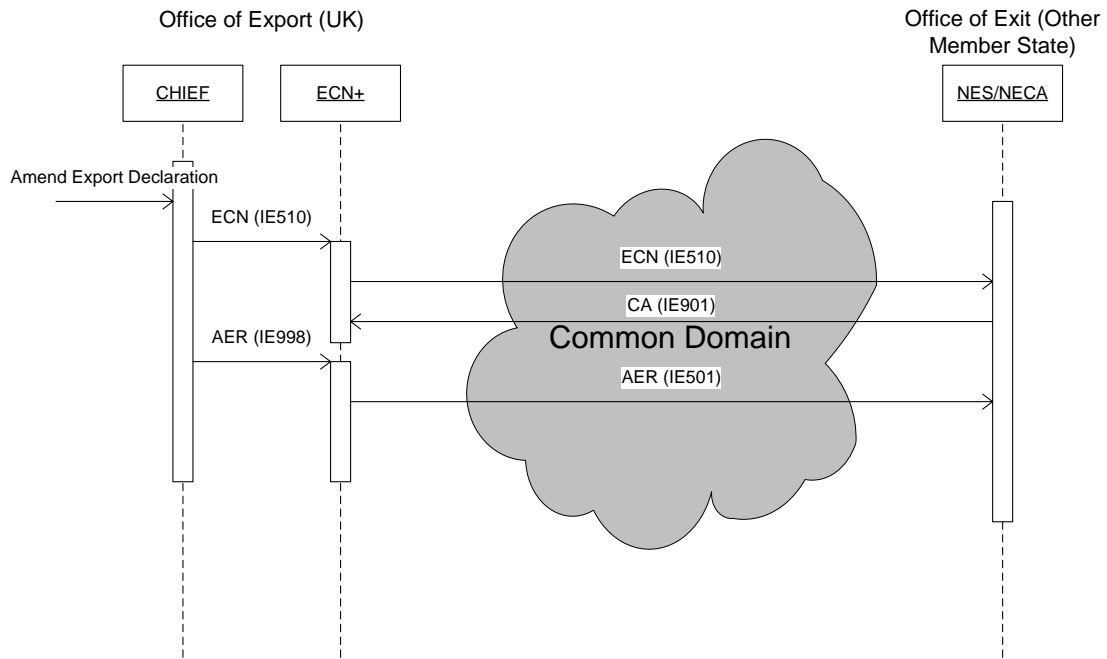


Figure 5. Indirect Export Amendment

CHIEF similarly informs ECN+ when a direct export is amended. In this case ECN+ only informs another Member State if the export has been diverted. As described in Section 2.2. CHIEF is not informed by ECN+ when a direct export arrives at an Office of Exit in another Member State.

## 2.5 Error Handling

Error messages may be sent between Member States but there are no error messages passed between CHIEF and ECN+. Instead of returning an error message, errors are reported and handled locally by the receiving system (i.e. ECN+ for IE998 Anticipated Export Record (AER) and IE510 Export Cancellation Notification (ECN) messages and CHIEF for IE518 Exit Results (ER) messages).

END OF SECTION 2

## DES243: TIS – Interface Between CHIEF and ECN+

### 3. IE998B (Anticipated Export Record) Message Structure

The Anticipated Export Record (IE998) message is the message defined for trader input to ECN+. This is the message that CHIEF sends to ECN+ for declarations submitted to CHIEF. ECN+ provides the interface with other Member States.

The current version of the message (IE998B) is defined in the System Requirement Definition for ECN+ (Reference [4]) Section 7. The definition refers to the IE501A which is specified in the DDNXA for ECS Phase 2 (Reference [5]) Appendix Q. The IE501A is the message that is sent to the Office of Exit in the other Member State.

IE998B contains the same information as IE501A. The only difference between IE501A and IE998B is that in the IE501A the MRN is required and the LRN is optional, while in the IE998B the LRN is required and the MRN is optional. Since CHIEF generates the MRN it is present in all IE998Bs sent to ECN+.

#### 3.1 CHIEF Mapping

**Table 1** gives the mapping between the XML elements in the IE998B message and the CHIEF Data items.

The requirement for data to be in the message and the maximum occurrences is indicated in the 'Pres' (presence) column as follows:

- R Required;
- O Optional;
- C Conditional;
- (n) the maximum number of occurrences (n) when more than one.

The values in the table below are as defined in the EU specification (see References [4] and [5]).

The conditions (Cnnn) and rules (Rnnn, TRnnn) from the EU specification are identified in the 'Comments' column with notes identifying how they are satisfied by CHIEF.

XML Element	CHIEF Data Item / literal value	Pres	Comments
<b>CC998B</b>		R	
SynIdeMES1	"UNOC"	R	
SynVerNumMES2	"3"	R	
MesSenMES3	"NES.GB"	R	
SenIdeCodQuaMES4		O	not used
MesRecMES6	"NECA.GB"	R	
RecldeCodQuaMES7		O	not used
DatOfPreMES9	SYS-DATE	R	
TimOfPreMES10	SYS-TIME	R	
IntConRefMES11	SYSMRN	R	Unique reference for the message. CHIEF uses a variant of the date-time – in units of 100 microsecs since 00:00 on 01/01/1980.
RecRefMES12		O	not used
RecRefQuaMES13		O	not used
AppRefMES14		O	not used
PriMES15		O	not used
AckReqMES16		O	not used
ComAgrIdMES17		O	not used
TesIndMES18		O	not used
MesIdeMES19	SYSMRN	R	
MesTypMES20	"CC998B"	R	
ComAccRefMES21		O	not used

## DES243: TIS – Interface Between CHIEF and ECN+

XML Element	CHIEF Data Item / literal value	Pres	Comments
<b>-HEAHEA</b>		<b>R</b>	<b>R143</b> The data is from the current version of the entry.
RefNumHEA4	MRN	R	This element is the Local Reference Number. It is in the IE998 to provide a trader's reference to the Anticipated Export Record in the local ECN+ and must be a unique reference within the local ECN+. CHIEF does require such a unique number to be supplied by the trader in an export declaration but it is a required element in the IE998. The MRN generated by CHIEF is sent in this mandatory element as it satisfies the requirement for a unique reference in HMRC's ECN+ system.
DocNumHEA5	MRN	O	MRN generated by CHIEF.
TypOfDecHEA24	DECLN-TYPE-ZONE	R	First 2 characters of DECLN-TYPE (Codelist 31).
CouOfDesCodHEA30	DEST-CNTRY	O	The country of destination. <b>TR9120</b> Must be declared at header level if the same for all items. <b>TR9121:</b> If DECLN-TYPE-ZONE = 'CO' then code list CL010 applies Else if DECLN-TYPE-ZONE = 'EU' then code list CL063 applies Else (i.e. DECLN-TYPE-ZONE = 'EX') code list CL140 applies.
CouOfDisCodHEA55	DISP-CNTRY	O	The country of export. <b>TR9120</b> Must be declared at header level if the same for all items. <b>TR9122</b> Must be an EU member state (code list CL010 applies).
IdeOfMeaOfTraAtDHEA78	TRPT-ID-INLD	O	
IdeOfMeaOfTraAtDHEA78LNG	TRPT-ID-INLD-LNG	C	Language defaults to "EN". <b>C99</b> Required if the associated transport identity is supplied.
ConIndHEA96	CNTR-CODE	R	<b>R230</b> The value is "0" (not in a container) or "1" (in a container) (Codelist 27).
AccDatHEA158	ACPTNC-DT	R	Date of Legal Acceptance. Note this means that ECN+ validation is based on Reference Data effective at midnight on the date of acceptance where validation on CHIEF is based on Reference Data effective at the time of acceptance. HMRC are responsible for ensuring that the Reference Data on CHIEF is consistent with the data on ECN+ (e.g. it must only be changed at midnight).
IssDatHEA186	DT-OF-ENT	R	This should be the date of clearance but it is the entry date so the trade can print their EAD before clearance.
ECSAccDocHEA601	EAD-LNG	R	The EAD language code for UK Exports is set to "EN" by CHIEF.
TotNumOfIteHEA305	ITEM-CNT	R	Number of items in the IE998. This is the number of substantive items on the entry rather than the total item count which includes deleted items. The maximum number of items that can currently be declared to CHIEF is 99 rather than the ECS limit of 999.
TotNumOfPacHEA306		O	Not used. <b>R830</b> is met by not using this element.
TotGroMasHEA307	ENT-GROSS-MASS	O	Derived by CHIEF by totalling the gross mass declared for substantive items. Only supplied when greater than zero. <b>R832</b> see ITEM-GROSS-MASS.
DecSubTimHEA1	ENT-DTM	R	<b>R660</b> The format is ccymmdhhmm.
SpeCirIndHEA1	SP-CIRCUM-IND	O	Declared as a header level AI Code starting with "SPCI". <b>R839</b> Gives the rule for which traders must be AEO (i.e. exporters at header and item level and would apply to declarant if one was included on the message).
TraChaMetOfPayHEA1	TRPT-CHGE-MOP	O	<b>TR9120</b> Must be declared at header level if the same for all items.
ComRefNumHEA	DECLN-UCR	C	The Declaration UCR as declared. If the Declaration UCR is generated by CHIEF the element is not sent. <b>C567</b> Transport document required if UCR not given at header or item level. <b>R876</b> Must be declared at header level if the same for all items.
<b>-TRAEXPEX1</b>		<b>C</b>	<b>C510</b> If same for all items then must be declared at header level.
NamEX17	CNSGR-NAME	R	This is the abbreviated name defined on CHIEF for a known trader (i.e. a GB CNSGR-TID except GBPR and GBUNREG), or the name as declared for other traders.



## DES243: TIS – Interface Between CHIEF and ECN+

XML Element	CHIEF Data Item / literal value	Pres	Comments
StrAndNumEX122	CNSGR-STREET	R	For a known trader street is the first and city the last address line defined on CHIEF and country is "GB". Otherwise the declared street, city, country and postcode are in the message.
PosCodEX123	CNSGR-POSTCODE	R	
CitEX124	CNSGR-CITY	R	
CouEX125	CNSGR-CNTRY	R	
NADLNGEX	CNSGR-LNG	R	Language defaults to "EN".
TINEX159	CNSGR-TID	R	
<b>-TRACONCE1</b>		<b>O</b>	<b>R11</b> If same for all items then must be declared at header level.
NamCE17	CNSGE-NAME	R	This is the abbreviated name defined on CHIEF for a known trader (i.e. a GB CNSGE-TID except GBPR), or the name as declared for other traders.
StrAndNumCE122	CNSGE-STREET	R	For a known trader street is the first and city the last address line defined on CHIEF and country is "GB". Otherwise the declared street, city, country and postcode are in the message.
PosCodCE123	CNSGE-POSTCODE	R	
CitCE124	CNSGE-CITY	R	
CouCE125	CNSGE-CNTRY	R	
NADLNGCE	CNSGE-LNG	R	Language defaults to "EN".
TINCE159	CNSGE-TID	O	
<b>-CUSOFFEXPERT</b>		<b>R</b>	
RefNumERT1	EXPORT-OFFICE	R	EU Customs Office Reference number for the Office of Export as defined for the OFF-OF-EXP-LOCN.
<b>-CUSOFFEXIEXT</b>		<b>R</b>	
RefNumEXT1	EXIT-OFFICE	R	When a direct export declaration is sent to ECN+ so that ECN+ can handle a subsequent diversion to an indirect export the EXIT-OFFICE is set to the value defined in the system parameter EXIT in the EXPA table
<b>-CONRESERS</b>		<b>R</b>	
ConResCodERS16	EXPORT-CNTRL-RES	R	Values (see Codelist 47) are set as follows on clearance: A1 Satisfactory – Full Declaration manually cleared (ICS 51); A2 Considered Satisfactory – Full Declaration automatically cleared (ICS 50); A3 Authorised Trader – PSA (i.e. Box 2 sub-division 2 is "C" or "F").
DatLimERS69	LATEST-ARR-DT	R	The latest arrival date at the Office of Exit is calculated by adding to the clearance (i.e. P2P at the Office of Export) date the number of days defined for the country whose code is the first two characters of the EXIT-OFFICE. Note, the number of days is defined for "GB" so there is no special processing to establish the value for a direct export.
<b>-SEAINFSLI</b>		<b>O</b>	Only supplied when the count is greater than zero.
SeaNumSLI2	SEAL-COUNT	R	
<b>--SEAIDSID</b>		<b>C(99)</b>	CHIEF will always send at least one occurrence of this element since the owning element is only sent when the count is greater than zero. <b>C569</b> Required if count greater than zero.
SealdeSID1	SEAL-ID	R	
SealdeSID1LNG	SEAL-ID-LNG	R	Language defaults to "EN".
<b>-GOOITEGDS</b>		<b>R(999)</b>	
IteNumGDS7	ITEM-NO	R	Items are numbered sequentially from 1. Nothing is sent for a deleted item so the item number may not be the number of the item on CHIEF. <b>R5</b> Always used. <b>R7</b> Items must be sequentially numbered from one.
GooDesGDS23	GDS-DESC	R	
GooDesGDS23LNG	GDS-DESC-LNG	R	Language defaults to "EN".
GroMasGDS46	ITEM-GROSS-MASS	O	<b>R832</b> HMRC are responsible for setting the indicator on CPCs to identify when the gross mass is required (else optional).



## DES243: TIS – Interface Between CHIEF and ECN+

XML Element	CHIEF Data Item / literal value	Pres	Comments
NetMasGDS48	ITEM-NET-MASS	R	Where Net mass is not declared on CHIEF a default value of 0.001 is passed to ECN+. Note. CHIEF IES only permits a positive value to be declared on an Export entry. Similarly, ECS will only accept a positive value to be passed in this field.
CouOfDisGDS58	ITEM-DISP-CNTRY	C	The country of export. <b>C578</b> Must not be supplied if declared at header level. Optional for Specific Circumstance "A" (postal and express), but this is not allowed by CHIEF. <b>TR9120</b> Must be declared at header level if the same for all items. <b>TR9122</b> Must be an EU member state (code list CL010 applies).
CouOfDesGDS59	ITEM-DEST-CNTRY	C	The country of destination. <b>C568</b> Must not be supplied if declared at header level. Optional for some CPCs but this is not supported by CHIEF. <b>TR9120</b> Must be declared at header level if the same for all items. <b>TR9121:</b> If DECLN-TYPE-ZONE = 'CO' then code list CL010 applies Else if DECLN-TYPE-ZONE = 'EU' then code list CL063 applies Else (i.e. DECLN-TYPE-ZONE = 'EX') code list CL140 applies.
MetOfPayGDI12	I-TRPT-CHGE-MOP	C	<b>C576</b> Cannot be used if declared at header level, otherwise optional. <b>TR9120</b> Must be declared at header level if the same for all items.
ProReqGDI1	CPC-REQ	R	Requested procedure (ch 1, 2 of CPC).
PreProGDI1	CPC-PREV	R	Previous procedure (ch 3, 4 of CPC).
ComNatProGIM1	CPC-PROC	R	Commodity or National procedure ( ch 5 to 7 of CPC) is always supplied as spaces. <b>R858</b> which allowed national as well as EU values (code list #102) has been removed by the EU.
StaValCurGDI1	DECLN-CRRN	O	
StaValAmoGDI1	ITEM-STAT-VAL-DC	R	Note: the EU definition is 11.2 but CHIEF only allows 10.2. Where Item Statistical Value is not declared on CHIEF a default value of 0.00 is passed to ECN+.  C028 IF the attribute 'Procedure requested (box 37.1)' = '31', '71', '76', '77' or '78' THEN this attribute = "O" ELSE this attribute = "R"  To implement this rule HMRC use the CPC Prohibit/Restrict indicator to enforce the (optional) declaration of Item Statistical value (or alternatively require the field to be omitted).
ComRefNumGIM1		O	Not used. <b>C567</b> Transport document required if UCR not given at header or item level. <b>R876</b> Must be declared at header level if the same for all items.
UNDanGooCodGDI1	UNDG-CODE	O	(Codelist 101)



## DES243: TIS – Interface Between CHIEF and ECN+

XML Element	CHIEF Data Item / literal value	Pres	Comments
<b>--PREADMREFAR2</b>		<b>O(9)</b>	<b>R820</b> All declared previous documents are sent.
PreDocTypAR21	PREV-DOC-TYPE	R	(Codelist 14) HMRC are responsible for only defining 'Common' codes in the PRDT. <b>R79</b> only 'Common' documents can be sent. [ <b>R893</b> relates to EMCS and states: Only 1 occurrence of the value 'AAD' for the attribute 'Previous Document Type' can be used per goods item. The attribute 'Previous Document Reference' for 'Previous Document Type' with value 'AAD' shall be the AAD Reference Code (ARC-21 characters) concatenated with 3 positions for the Body Record Unique Reference (3 characters, left padded with zeroes)]
PreDocRefAR26	PREV-DOC-REF	R	<b>R893</b> , (see PREV-DOC-TYPE above), further requires that when a particular AAD Reference Code (ARC Reference) is declared on an Export Entry, it must not be declared on any other Export Entry. [Note that this does not prevent its use on more than one goods item on the Entry].
PreDocRefLNG	PREV-DOC-LNG	R	Language defaults to "EN".
<b>--PRODOCDC2</b>		<b>C(99)</b>	<b>C567</b> specifies when a transport document is required.
DocTypDC21	ITEM-DOC-CODE	R	Any declared documents where the code is defined in the DCDE table with indicator 'EU Document' set to "Y". <b>R79</b> only 'Common' documents can be sent. HMRC are responsible for only defining the 'common' documents to be of interest to EU (ITEM-DOC-CODE-EU set on entry from the 'EU Document' indicator in DCDE). It should be noted that Codelist 13 does not currently include any of the harmonised document codes that can be declared to CHIEF.
DocRefDC23	ITEM-DOC-REF	R	HMRC are responsible for only setting 'EU Document' to "Y" on document codes that require a reference to be declared.
DocRefDCLNG	ITEM-DOC-LNG	R	Language defaults to "EN".
<b>--SPEMENMT2</b>		<b>O(99)</b>	<b>R80</b> only 'Common' special mentions can be sent.
AddInfCodMT23	ITEM-AI-STMT	R	Any declared AI Statements where the AI code is defined in the AISC table with indicator 'EU statement' set to "Y". (Codelist 39) HMRC are responsible for only defining 'Common' AI Codes to be of interest to EU (ITEM-AI-CODE-EU set on entry from the 'EU Statement' indicator in AISC).
TexSPM1	ITEM-AI-STMT-TXT	O	
TexSPM1LNG	ITEM-AI-STMT-LNG	C	Language defaults to "EN". <b>C99</b> Required if text supplied.
<b>--TRACONEX2</b>		<b>C</b>	<b>C510</b> If same for all items then must be declared at header level.
NamEX27	I-CNSGR-NAME	R	This is the abbreviated name defined on CHIEF for a known trader (i.e. a GB TID except GBPR and GBUNREG), or the name as declared for other traders.
StrAndNumEX222	I-CNSGR-STREET	R	For a known trader street is the first and city the last address line defined on CHIEF and country is "GB". Otherwise the declared street, city, country and postcode are in the message.
PosCodEX223	I-CNSGR-POSTCODE	R	
CitEX224	I-CNSGR-CITY	R	
CouEX225	I-CNSGR-CNTRY	R	
NADLNGGTEX	I-CNSGR-LNG	R	Language defaults to "EN".
TINEX259	I-CNSGR-TID	R	
<b>--COMCODGODITM</b>		<b>R</b>	
ComNomCMD1	BASE-CMDTY-CODE	R	
TARCodCMD1	IE998-TARIC-CODE	R	<b>R868</b> set to "00" (not used for exports).
TARFirAddCodCMD1	EC-SUPPLEMENT	R	<b>R869</b> set to "0000" if not declared.
TARSecAddCodCMD1	EC-SUPPLEMENT-2	R	<b>R869</b> set to "0000" if not declared.
NAtAddCodCMD1		O	Not used by CHIEF. <b>R858</b> National values can be sent so must not be validated by other Member States.

## DES243: TIS – Interface Between CHIEF and ECN+

XML Element	CHIEF Data Item / literal value	Pres	Comments
<b>--TRACONCE2</b>		<b>O</b>	<b>R11</b> If same for all items then must be declared at header level.
NamCE27	I-CNSGE-NAME	R	This is the abbreviated name defined on CHIEF for a known trader (i.e. a GB I-CNSGE-TID except GBPR), or the name as declared for other traders.
StrAndNumCE222	I-CNSGE-STREET	R	For a known trader street is the first and city the last address line defined on CHIEF and country is "GB". Otherwise the declared street, city, country and postcode are in the message.
PosCodCE223	I-CNSGE-POSTCODE	R	
CitCE224	I-CNSGE-CITY	R	
CouCE225	I-CNSGE-CNTRY	R	
NADLNGGICE	I-CNSGE-LNG	R	Language defaults to "EN".
TINCE259	I-CNSGE-TID	O	
<b>--CONNR2</b>		<b>O(99)</b>	
ConNumNR21	CNTR-NO	R	
<b>--PACGS2</b>		<b>R(99)</b>	
MarNumOfPacGS21	PKG-MARKS	C	<b>C60</b> Required when the category of the PKG-KIND in table PKGE = 'P' packaged. Otherwise optional.
MarNumOfPacGS21LNG	PKG-MARKS-LNG	C	Language defaults to "EN". <b>C99</b> Required if marks supplied.
KinOfPacGS23	PKG-KIND	R	(Codelist 17)
NumOfPacGS24	PKG-COUNT	C	Declared package count populated when PKG-KIND in table PKGE is "P" (packaged). <b>R21</b> allows the count to be zero but CHIEF does not. <b>C60</b> required for packaged goods.
NumOfPieGS25	PIECES-COUNT	C	Declared package count (PKG-COUNT) populated when PKG-KIND in table PKGE is "I" (in pieces). <b>C60</b> required for goods in pieces.
<b>-ITI</b>		<b>O(99)</b>	<b>R877</b> Routing countries other than the countries of Export and Destination.
CouOfRouCodIT1	ROUTE-CNTRY	R	
<b>-RISANA</b>		<b>O(999)</b>	<b>R819</b> Only send risk analysis result codes ending with "D", "E", "Z".
IteNumInvRKA1	RSK-ITEM-NO	O	<b>R824</b> Supplied if the risk relates to an item. <b>R875</b> Number of item in this message to which the risk applies.
RisAnaResCodRKA1	RSK-RES-CODE	R	
RisAnaTexRKA1	RSK-RES-TXT	O	
RisAnaTexRKA1LNG	RSK-RES-TXT-LNG	C	Language defaults to "EN". <b>C99</b> Required if text supplied.

Table 1. IE998B Data Mapping

Some Country Codes (such as those for the Channel Islands and Continental Shelf countries) are not recognised by ECN+ (which operates to the more restricted TAXUD codes) and so all Country Codes are examined against the ESCY table maintained by HMRC. If the Country Code in the CHIEF data item is found in the table, the EU-compatible substitution value will be applied in the appropriate element of the IE998 output message. Specifically, the following Country Codes may be substituted:

- Country of Dispatch (DISP-CNTRY or ITEM-DISP-CNTRY)  
If, after substitution, all Items have the same Country of Dispatch, then Country of Dispatch will be transferred to Header level and removed from each Item.
- Country of Destination (DEST-CNTRY or ITEM-DEST-CNTRY)  
If, after substitution, all Items now have the same Country of Destination, then Country of Destination will be transferred to Header level and removed from each Item.
- Consignor Country (CNSGR-CNTRY or I-CNSGR-CNTRY).
- Consignee Country (CNSGE-CNTRY or I-CNSGE-CNTRY).



## DES243: TIS – Interface Between CHIEF and ECN+

---

- Route Country (ROUTE-CNTRY)  
Following substitution, the Route Country(ies) are checked to remove duplication and those which now match the Country of Dispatch or Country of Destination.

### 3.2 IE998B Document Type Definition

This is the DTD for the IE998B taken from the EU SRD specification (Reference [4]). It is repeated here so that there is a single point of reference in this document for all the information for the interface.



## DES243: TIS – Interface Between CHIEF and ECN+

```

<!-- Node: MESSAGE -->
<!ELEMENT CC998B (SynIdeMES1, SynVerNumMES2, MesSenMES3, SenIdeCodQuaMES4?, MesRecMES6,
RecIdeCodQuaMES7?, DatOfPreMES9, TimOfPreMES10, IntConRefMES11, RecRefMES12?, RecRefQuaMES13?,
AppRefMES14?, PriMES15?, AckReqMES16?, ComAgrIdMES17?, TesIndMES18?, MesIdeMES19, MesTypMES20,
ComAccRefMES21?, HEAHEA, TRAEXPEX1?, TRACONCE1?, CUSOFFEXPERT, CUSOFFEXIEXT, CONRESERS, SEAINFSLI?,
GOOITEGDS+, ITI*, RISANA*)>
<!-- Node: HEADER -->
<!ELEMENT HEAHEA (RefNumHEA4, DocNumHEA5?, TypOfDecHEA24, CouOfDesCodHEA30?, CouOfDisCodHEA55?,
IdeOfMeaOfTraAtDHEA78?, IdeOfMeaOfTraAtDHEA78LNG?, ConIndHEA96, AccDatHEA158, IssDatHEA186,
ECSAccDocHEA601, TotNumOfIteHEA305, TotNumOfPacHEA306?, TotGroMasHEA307?, DecSubTimHEA1,
SpeCirIndHEA1?, TraChaMetOfPayHEA1?, ComRefNumHEA?)>
<!-- Node: (EXPORTER) TRADER -->
<!ELEMENT TRAEXPEX1 (NamEX17, StrAndNumEX122, PosCodEX123, CitEX124, CouEX125, NADLNGEX?, TINEX159)>
<!-- Node: (CONSIGNEE) TRADER -->
<!ELEMENT TRACONCE1 (NamCE17, StrAndNumCE122, PosCodCE123, CitCE124, CouCE125, NADLNGCE?, TINCE159?)>
<!-- Node: (EXPORT) CUSTOMS OFFICE -->
<!ELEMENT CUSOFFEXPERT (RefNumERT1)>
<!-- Node: (EXIT) CUSTOMS OFFICE -->
<!ELEMENT CUSOFFEXIEXT (RefNumEXT1)>
<!-- Node: CONTROL RESULT -->
<!ELEMENT CONRESERS (ConResCodERS16, DatLimERS69)>
<!-- Node: SEALS INFO -->
<!ELEMENT SEAINFSLI (SeaNumSLI2, SEAIDSID*)>
<!-- Node: GOODS ITEM -->
<!ELEMENT GOOITEGDS (IteNumGDS7, GooDesGDS23, GooDesGDS23LNG?, GroMasGDS46?, NetMasGDS48,
CouOfDisGDS58?, CouOfDesGDS59?, MetOfPayGDI1?, ProReqGDI1, PreProGDI1, ComNatProGIM1?,
StaValCurGDI1?, StaValAmoGDI1, ComRefNumGIM1?, UNDanGooCodGDI1?, PREADMREFAR2*, PRODOCDC2*,
SPEMENMT2*, TRACONEX2?, COMCODGODITM, TRACONCE2?, CONNR2*, PACGS2+)>
<!-- Node: ITINERARY -->
<!ELEMENT ITI (CouOfRouCodITI1)>
<!-- Node: RISK ANALYSIS -->
<!ELEMENT RISANA (IteNumInvRKA1?, RisAnaResCodRKA1, RisAnaTexRKA1?, RisAnaTexRKA1LNG?)>
<!-- Node: SEALS ID -->
<!ELEMENT SEAIDSID (SeaIdeSID1, SeaIdeSID1LNG?)>
<!-- Node: PREVIOUS ADMINISTRATIVE REFERENCES -->
<!ELEMENT PREADMREFAR2 (PreDocTypAR21, PreDocRefAR26, PreDocRefLNG?)>
<!-- Node: PRODUCED DOCUMENTS/CERTIFICATES -->
<!ELEMENT PRODOCDC2 (DocTypDC21, DocRefDC23, DocRefDCLNG?)>
<!-- Node: SPECIAL MENTIONS -->
<!ELEMENT SPEMENMT2 (AddInfCodMT23, TexSPM1?, TexSPM1LNG?)>
<!-- Node: (EXPORTER) TRADER -->
<!ELEMENT TRACONEX2 (NamEX27, StrAndNumEX222, PosCodEX223, CitEX224, CouEX225, NADLNGGTEX?,
TINEX259)>
<!-- Node: (CODE) COMMODITY -->
<!ELEMENT COMCODGODITM (ComNomCMD1, TARCodCMD1, TARFirmAddCodCMD1, TARSecAddCodCMD1,
NATAddCodCMD1?)>
<!-- Node: (CONSIGNEE) TRADER -->
<!ELEMENT TRACONCE2 (NamCE27, StrAndNumCE222, PosCodCE223, CitCE224, CouCE225, NADLNGGICE?,
TINCE259?)>
<!-- Node: CONTAINERS -->
<!ELEMENT CONNR2 (ConNumNR21)>
<!-- Node: PACKAGES -->
<!ELEMENT PACGS2 (MarNumOfPacGS21?, MarNumOfPacGS21LNG?, KinOfPacGS23, NumOfPacGS24?, NumOfPieGS25?)>
<!--Leaf: Syntax identifier -->
<!ELEMENT SynIdeMES1 (#PCDATA)>
<!--Leaf: Syntax version number -->
<!ELEMENT SynVerNumMES2 (#PCDATA)>
<!--Leaf: Message sender -->
<!ELEMENT MesSenMES3 (#PCDATA)>
<!--Leaf: Sender identification code qualifier -->
<!ELEMENT SenIdeCodQuaMES4 (#PCDATA)>
<!--Leaf: Message recipient -->
<!ELEMENT MesRecMES6 (#PCDATA)>
<!--Leaf: Recipient identification code qualifier -->
<!ELEMENT RecIdeCodQuaMES7 (#PCDATA)>
<!--Leaf: Date of preparation -->
<!ELEMENT DatOfPreMES9 (#PCDATA)>
<!--Leaf: Time of preparation -->
<!ELEMENT TimOfPreMES10 (#PCDATA)>
<!--Leaf: Interchange control reference -->

```



## DES243: TIS – Interface Between CHIEF and ECN+

```

<!ELEMENT IntConRefMES11 (#PCDATA)>
<!--Leaf: Recipient's reference/password -->
<!ELEMENT RecRefMES12 (#PCDATA)>
<!--Leaf: Recipient's reference/password qualifier -->
<!ELEMENT RecRefQuaMES13 (#PCDATA)>
<!--Leaf: Application reference -->
<!ELEMENT AppRefMES14 (#PCDATA)>
<!--Leaf: Priority -->
<!ELEMENT PriMES15 (#PCDATA)>
<!--Leaf: Acknowledgement request -->
<!ELEMENT AckReqMES16 (#PCDATA)>
<!--Leaf: Communications agreement id -->
<!ELEMENT ComAgrIdMES17 (#PCDATA)>
<!--Leaf: Test indicator -->
<!ELEMENT TesIndMES18 (#PCDATA)>
<!--Leaf: Message identification -->
<!ELEMENT MesIdeMES19 (#PCDATA)>
<!--Leaf: Message type -->
<!ELEMENT MesTypMES20 (#PCDATA)>
<!--Leaf: Common access reference -->
<!ELEMENT ComAccRefMES21 (#PCDATA)>
<!--Leaf: Reference number -->
<!ELEMENT RefNumHEA4 (#PCDATA)>
<!--Leaf: Document/reference number -->
<!ELEMENT DocNumHEA5 (#PCDATA)>
<!--Leaf: Type of declaration -->
<!ELEMENT TypOfDecHEA24 (#PCDATA)>
<!--Leaf: Country of destination code -->
<!ELEMENT CouOfDesCodHEA30 (#PCDATA)>
<!--Leaf: Country of dispatch/export code -->
<!ELEMENT CouOfDisCodHEA55 (#PCDATA)>
<!--Leaf: Identity of means of transport at departure (exp/trans) -->
<!ELEMENT IdeOfMeaOfTraAtDHEA78 (#PCDATA)>
<!--Leaf: Identity of means of transport at departure LNG -->
<!ELEMENT IdeOfMeaOfTraAtDHEA78LNG (#PCDATA)>
<!--Leaf: Containerised indicator -->
<!ELEMENT ConIndHEA96 (#PCDATA)>
<!--Leaf: Acceptance date -->
<!ELEMENT AccDatHEA158 (#PCDATA)>
<!--Leaf: Issuing date -->
<!ELEMENT IssDatHEA186 (#PCDATA)>
<!--Leaf: ECS accompanying document language code -->
<!ELEMENT ECSAccDocHEA601 (#PCDATA)>
<!--Leaf: Total number of items -->
<!ELEMENT TotNumOfIteHEA305 (#PCDATA)>
<!--Leaf: Total number of packages -->
<!ELEMENT TotNumOfPacHEA306 (#PCDATA)>
<!--Leaf: Total gross mass -->
<!ELEMENT TotGroMasHEA307 (#PCDATA)>
<!--Leaf: Declaration submitted time -->
<!ELEMENT DecSubTimHEA1 (#PCDATA)>
<!--Leaf: Specific Circumstance Indicator -->
<!ELEMENT SpeCirIndHEA1 (#PCDATA)>
<!--Leaf: Transport charges/ Method of Payment -->
<!ELEMENT TraChaMetOfPayHEA1 (#PCDATA)>
<!--Leaf: Commercial Reference Number -->
<!ELEMENT ComRefNumHEA (#PCDATA)>
<!--Leaf: Name -->
<!ELEMENT NamEX17 (#PCDATA)>
<!--Leaf: Street and number -->
<!ELEMENT StrAndNumEX122 (#PCDATA)>
<!--Leaf: Postal code -->
<!ELEMENT PosCodEX123 (#PCDATA)>
<!--Leaf: City -->
<!ELEMENT CitEX124 (#PCDATA)>
<!--Leaf: Country code -->
<!ELEMENT CouEX125 (#PCDATA)>
<!--Leaf: NAD LNG -->
<!ELEMENT NADLNGEX (#PCDATA)>
<!--Leaf: TIN -->

```



## DES243: TIS – Interface Between CHIEF and ECN+

```

<!ELEMENT TINEX159 (#PCDATA)>
<!--Leaf: Name -->
<!ELEMENT NamCE17 (#PCDATA)>
<!--Leaf: Street and number -->
<!ELEMENT StrAndNumCE122 (#PCDATA)>
<!--Leaf: Postal code -->
<!ELEMENT PosCodCE123 (#PCDATA)>
<!--Leaf: City -->
<!ELEMENT CitCE124 (#PCDATA)>
<!--Leaf: Country code -->
<!ELEMENT CouCE125 (#PCDATA)>
<!--Leaf: NAD LNG -->
<!ELEMENT NADLNGCE (#PCDATA)>
<!--Leaf: TIN -->
<!ELEMENT TINCE159 (#PCDATA)>
<!--Leaf: Reference number -->
<!ELEMENT RefNumERT1 (#PCDATA)>
<!--Leaf: Reference number -->
<!ELEMENT RefNumEXT1 (#PCDATA)>
<!--Leaf: Control result code -->
<!ELEMENT ConResCodERS16 (#PCDATA)>
<!--Leaf: Date limit -->
<!ELEMENT DatLimERS69 (#PCDATA)>
<!--Leaf: Seals number -->
<!ELEMENT SeaNumSLI2 (#PCDATA)>
<!--Leaf: Seals identity -->
<!ELEMENT SeaIdeSID1 (#PCDATA)>
<!--Leaf: Seals identity LNG -->
<!ELEMENT SeaIdeSID1LNG (#PCDATA)>
<!--Leaf: Item number -->
<!ELEMENT IteNumGDS7 (#PCDATA)>
<!--Leaf: Goods description -->
<!ELEMENT GooDesGDS23 (#PCDATA)>
<!--Leaf: Goods description LNG -->
<!ELEMENT GooDesGDS23LNG (#PCDATA)>
<!--Leaf: Gross mass -->
<!ELEMENT GroMasGDS46 (#PCDATA)>
<!--Leaf: Net mass -->
<!ELEMENT NetMasGDS48 (#PCDATA)>
<!--Leaf: Country of dispatch/export code -->
<!ELEMENT CouOfDisGDS58 (#PCDATA)>
<!--Leaf: Country of destination code -->
<!ELEMENT CouOfDesGDS59 (#PCDATA)>
<!--Leaf: Transport charges/ Method of Payment -->
<!ELEMENT MetOfPayGDI12 (#PCDATA)>
<!--Leaf: Procedure requested -->
<!ELEMENT ProReqGDI1 (#PCDATA)>
<!--Leaf: Previous Procedure -->
<!ELEMENT PreProGDI1 (#PCDATA)>
<!--Leaf: Community / National Procedure -->
<!ELEMENT ComNatProGIM1 (#PCDATA)>
<!--Leaf: Statistical value currency -->
<!ELEMENT StaValCurGDI1 (#PCDATA)>
<!--Leaf: Statistical value amount -->
<!ELEMENT StaValAmoGDI1 (#PCDATA)>
<!--Leaf: Commercial Reference Number -->
<!ELEMENT ComRefNumGIM1 (#PCDATA)>
<!--Leaf: UN dangerous goods code -->
<!ELEMENT UNDanGooCodGDI1 (#PCDATA)>
<!--Leaf: Previous document type -->
<!ELEMENT PreDocTypAR21 (#PCDATA)>
<!--Leaf: Previous document reference -->
<!ELEMENT PreDocRefAR26 (#PCDATA)>
<!--Leaf: Previous document reference LNG -->
<!ELEMENT PreDocRefLNG (#PCDATA)>
<!--Leaf: Document type -->
<!ELEMENT DocTypDC21 (#PCDATA)>
<!--Leaf: Document reference -->
<!ELEMENT DocRefDC23 (#PCDATA)>
<!--Leaf: Document reference LNG -->

```



## DES243: TIS – Interface Between CHIEF and ECN+

```

<!ELEMENT DocRefDCING (#PCDATA)>
<!--Leaf: Additional information coded -->
<!ELEMENT AddInfCodMT23 (#PCDATA)>
<!--Leaf: Text -->
<!ELEMENT TexSPM1 (#PCDATA)>
<!--Leaf: Text LNG -->
<!ELEMENT TexSPM1LNG (#PCDATA)>
<!--Leaf: Name -->
<!ELEMENT NamEX27 (#PCDATA)>
<!--Leaf: Street and number -->
<!ELEMENT StrAndNumEX222 (#PCDATA)>
<!--Leaf: Postal code -->
<!ELEMENT PosCodEX223 (#PCDATA)>
<!--Leaf: City -->
<!ELEMENT CitEX224 (#PCDATA)>
<!--Leaf: Country code -->
<!ELEMENT CouEX225 (#PCDATA)>
<!--Leaf: NAD LNG -->
<!ELEMENT NADLNGGTEX (#PCDATA)>
<!--Leaf: TIN -->
<!ELEMENT TINEX259 (#PCDATA)>
<!--Leaf: Combined Nomenclature -->
<!ELEMENT ComNomCMD1 (#PCDATA)>
<!--Leaf: TARIC code -->
<!ELEMENT TARCodCMD1 (#PCDATA)>
<!--Leaf: TARIC first additional code -->
<!ELEMENT TARFirAddCodCMD1 (#PCDATA)>
<!--Leaf: TARIC second additional code -->
<!ELEMENT TARSecAddCodCMD1 (#PCDATA)>
<!--Leaf: National additional code -->
<!ELEMENT NATAddCodCMD1 (#PCDATA)>
<!--Leaf: Name -->
<!ELEMENT NamCE27 (#PCDATA)>
<!--Leaf: Street and number -->
<!ELEMENT StrAndNumCE222 (#PCDATA)>
<!--Leaf: Postal code -->
<!ELEMENT PosCodCE223 (#PCDATA)>
<!--Leaf: City -->
<!ELEMENT CitCE224 (#PCDATA)>
<!--Leaf: Country code -->
<!ELEMENT CouCE225 (#PCDATA)>
<!--Leaf: NAD LNG -->
<!ELEMENT NADLNGGICE (#PCDATA)>
<!--Leaf: TIN -->
<!ELEMENT TINCE259 (#PCDATA)>
<!--Leaf: Container number -->
<!ELEMENT ConNumNR21 (#PCDATA)>
<!--Leaf: Marks & numbers of packages -->
<!ELEMENT MarNumOfPacGS21 (#PCDATA)>
<!--Leaf: Marks & numbers of packages LNG -->
<!ELEMENT MarNumOfPacGS21LNG (#PCDATA)>
<!--Leaf: Kind of packages -->
<!ELEMENT KinOfPacGS23 (#PCDATA)>
<!--Leaf: Number of packages -->
<!ELEMENT NumOfPacGS24 (#PCDATA)>
<!--Leaf: Number of pieces -->
<!ELEMENT NumOfPieGS25 (#PCDATA)>
<!--Leaf: Country of routing code -->
<!ELEMENT CouOfRouCodITI1 (#PCDATA)>
<!--Leaf: Item Number involved -->
<!ELEMENT IteNumInvRKA1 (#PCDATA)>
<!--Leaf: Risk Analysis result code -->
<!ELEMENT RisAnaResCodRKA1 (#PCDATA)>
<!--Leaf: Risk Analysis text -->
<!ELEMENT RisAnaTexRKA1 (#PCDATA)>
<!--Leaf: Risk Analysis LNG -->
<!ELEMENT RisAnaTexRKA1LNG (#PCDATA)>

```



## DES243: TIS – Interface Between CHIEF and ECN+

## 3.3 Example IE998B

For illustrative purposes the following XML message includes all elements that are used by CHIEF but is not itself a valid declaration (e.g. some elements can only be declared at header or item level). It also includes some elements that are not used by CHIEF.

```

<CC998B>
  <SynIdeMES1>UNOC</SynIdeMES1>
  <SynVerNumMES2>3</SynVerNumMES2>
  <MesSenMES3>NES.GB</MesSenMES3>
  <MesRecMES6>NECA.GB</MesRecMES6>
  <DatOfPreMES9>081123</DatOfPreMES9>
  <TimOfPreMES10>1215</TimOfPreMES10>
  <IntConRefMES11> 09119097374506</IntConRefMES11>
  <MesIdeMES19> 09119097374506</MesIdeMES19>
  <MesTypMES20>CC998B</MesTypMES20>
  <HEAHEA>
    <RefNumHEA4>08GB11X01234567010</RefNumHEA4>
    <DocNumHEA5>08GB11X01234567010</DocNumHEA5>
    <TypOfDecHEA24>EX</TypOfDecHEA24>
    <CouOfDesCodHEA30>US</CouOfDesCodHEA30>
    <CouOfDisCodHEA55>GB</CouOfDisCodHEA55>
    <IdeOfMeaOfTraAtDHEA78>BIG LORRY</IdeOfMeaOfTraAtDHEA78>
    <IdeOfMeaOfTraAtDHEA78LNG>EN</IdeOfMeaOfTraAtDHEA78LNG>
    <ConIndHEA96>1</ConIndHEA96>
    <AccDatHEA158>20081122</AccDatHEA158>
    <IssDatHEA186>20081121</IssDatHEA186>
    <ECSAccDocHEA601>EN</ECSAccDocHEA601>
    <TotNumOfIteHEA305>1</TotNumOfIteHEA305>
    <TotGroMasHEA307>12.345</TotGroMasHEA307>
    <DecSubTimHEA1>200811210845</DecSubTimHEA1>
    <SpeCirIndHEA1>A</SpeCirIndHEA1>
    <TraChaMetOfPayHEA1>D</TraChaMetOfPayHEA1>
    <ComRefNumHEA>8GB123456789000-987654</ComRefNumHEA>
  </HEAHEA>
  <TRAEXPEX1>
    <NamEX17>G. B. Trader</NamEX17>
    <StrAndNumEX122>12 Some Street</StrAndNumEX122>
    <PosCodEX123>EC1 1AA</PosCodEX123>
    <CitEX124>London</CitEX124>
    <CouEX125>GB</CouEX125>
    <NADLNGEX>EN</NADLNGEX>
    <TINEX159>GB123456789000</TINEX159>
  </TRAEXPEX1>
  <TRACONCE1>
    <NamCE17>U. S. Trader</NamCE17>
    <StrAndNumCE122>5678 South Broadway</StrAndNumCE122>
    <PosCodCE123>ZIP 1234</PosCodCE123>
    <CitCE124>New York</CitCE124>
    <CouCE125>US</CouCE125>
    <NADLNGCE>EN</NADLNGCE>
    <TINCE159>US12345678</TINCE159>
  </TRACONCE1>
  <CUSOFFEXPERT>
    <RefNumERT1>GB000120</RefNumERT1>
  </CUSOFFEXPERT>
  <CUSOFFEXIEXT>
    <RefNumEXT1>FR001234</RefNumEXT1>
  </CUSOFFEXIEXT>
  <CONRESERS>
    <ConResCodERS16>A2</ConResCodERS16>
    <DatLimERS69>20090123</DatLimERS69>
  </CONRESERS>
  <SEAINFSLI>
    <SeaNumSLI2>1</SeaNumSLI2>
    <SEAIDSID>
      <SealdeSID1>SEAL123456</SealdeSID1>

```



## DES243: TIS – Interface Between CHIEF and ECN+

```

        <SealdeSID1LNG>EN</SealdeSID1LNG>
    </SEIDSID>
</SEAINFSLI>
<GOOITEGDS>
    <IteNumGDS7>1</IteNumGDS7>
    <GooDesGDS23>Cut flowers</GooDesGDS23>
    <GooDesGDS23LNG>EN</GooDesGDS23LNG>
    <GroMasGDS46>12.123</GroMasGDS46>
    <NetMasGDS48>10.2</NetMasGDS48>
    <CouOfDisGDS58>FR</CouOfDisGDS58>
    <CouOfDesGDS59>JP</CouOfDesGDS59>
    <MetOfPayGDI12>F</MetOfPayGDI12>
    <ProReqGDI1>10</ProReqGDI1>
    <PreProGDI1>00</PreProGDI1>
    <ComNatProGIM1> </ComNatProGIM1>
    <StaValCurGDI1>GBP</StaValCurGDI1>
    <StaValAmoGDI1>1234.55</StaValAmoGDI1>
    <UNDanGooCodGDI1>1781</UNDanGooCodGDI1>
    <PREADMREFAR2>
        <PreDocTypAR21>380</PreDocTypAR21>
        <PreDocRefAR26>INV00012345</PreDocRefAR26>
        <PreDocRefLNG>EN</PreDocRefLNG>
    </PREADMREFAR2>
    <PRODOCDC2>
        <DocTypDC21>X001</DocTypDC21>
        <DocRefDC23>GBCAP12345678</DocRefDC23>
        <DocRefDCLNG>EN</DocRefDCLNG>
    </PRODOCDC2>
    <SPEMENMT2>
        <AddInfCodMT23>30300</AddInfCodMT23>
        <TexSPM1>Handle with care</TexSPM1>
        <TexSPM1LNG>EN</TexSPM1LNG>
    </SPEMENMT2>
    <TRACONEX2>
        <NamEX27>G. B. Trader</NamEX27>
        <StrAndNumEX222>12 Some Street</StrAndNumEX222>
        <PosCodEX223>EC1 1AA</PosCodEX223>
        <CitEX224>London</CitEX224>
        <CouEX225>GB</CouEX225>
        <NADLNGGTEX>EN</NADLNGGTEX>
        <TINEX259>GB123456789000</TINEX259>
    </TRACONEX2>
    <COMCODGODITM>
        <ComNomCMD1>20304050</ComNomCMD1>
        <TARCodCMD1>00</TARCodCMD1>
        <TARFirAddCodCMD1>9001</TARFirAddCodCMD1>
        <TARSecAddCodCMD1>0000</TARSecAddCodCMD1>
        <NAAddCodCMD1>1234</NAAddCodCMD1>
    </COMCODGODITM>
    <TRACONCE2>
        <NamCE27>U. S. Trader</NamCE27>
        <StrAndNumCE222>5678 South Broadway</StrAndNumCE222>
        <PosCodCE223>ZIP 1234</PosCodCE223>
        <CitCE224>New York</CitCE224>
        <CouCE225>US</CouCE225>
        <NADLNGGICE>EN</NADLNGGICE>
        <TINCE259>US12345678</TINCE259>
    </TRACONCE2>
    <CONNR2>
        <ConNumNR21>23456789</ConNumNR21>
    </CONNR2>
    <PACGS2>
        <MarNumOfPacGS21>Box 7 of 11</MarNumOfPacGS21>
        <MarNumOfPacGS21LNG>EN</MarNumOfPacGS21LNG>
        <KinOfPacGS23>BX</KinOfPacGS23>
        <NumOfPacGS24>1</NumOfPacGS24>
        <NumOfPieGS25>1</NumOfPieGS25>
    </PACGS2>
</GOOITEGDS>

```

**DES243: TIS – Interface Between CHIEF and ECN+**

---

```
<ITI>
  <CouOfRouCodITI1>US</CouOfRouCodITI1>
</ITI>
<RISANA>
  <IteNumInvRKA1>1</IteNumInvRKA1>
  <RisAnaResCodRKA1>1234E</RisAnaResCodRKA1>
  <RisAnaTexRKA1>Looks ok to me</RisAnaTexRKA1>
  <RisAnaTexRKA1LNG>EN</RisAnaTexRKA1LNG>
</RISANA>
</CC998B>
```

END OF SECTION 3



**DES243: TIS – Interface Between CHIEF and ECN+**
**4. IE518A (Exit Results) Message Structure**

The Exit Results message (IE518) is sent from ECN+ to CHIEF when goods being indirectly exported from the UK have exited from another member state.

This message is used to update the entry with the exit results and record UK Departure where necessary. The details in the IE518 that come from the related IE998 are ignored. The detailed information that can be supplied by the Office of Exit in the IE518 is removed before passing the message on to CHIEF.

**4.1 CHIEF Mapping**

**Table 2** gives the mapping between the XML elements in the IE518 message and the CHIEF Data items.

The requirement for data to be in the message and the maximum occurrences is indicated in the 'Pres' (presence) column as follows:

- R Required;
- O Optional;
- C Conditional;
- (n) the maximum number of occurrences (n) when more than one.

The values in the table below are as defined in the EU specification (see References [4] and [5]).

The conditions (Cnnn) and rules (Rnnn, TRnnn) from the EU specification are identified in the 'Comments' column with notes identifying how they are satisfied by CHIEF.

XML Element	CHIEF Data Element / literal value	Pres	Comments
<b>CD518A</b>		<b>R</b>	
SynIdeMES1	"UNOC"	R	
SynVerNumMES2	"3"	R	
MesSenMES3	"NECA.GB"	R	
SenIdeCodQuaMES4	ignored	O	
MesRecMES6	"NES.GB"	R	
RecldeCodQuaMES7	ignored	O	
DatOfPreMES9	SYS-DATE	R	
TimOfPreMES10	SYS-TIME	R	
IntConRefMES11	SYSMRN	R	
RecRefMES12	ignored	O	
RecRefQuaMES13	ignored	O	
AppRefMES14	ignored	O	
PriMES15	ignored	O	
AckReqMES16	ignored	O	
ComAgrIdMES17	ignored	O	
TesIndMES18	ignored	O	
MesIdeMES19	SYSMRN	R	
MesTypMES20	"CD518A"	R	
ComAccRefMES21	ignored	O	
<b>-HEAHEA</b>		<b>R</b>	
DocNumHEA5	MRN	R	
IdeOfMeaOfTraAtDHEA78	TRPT-ID-INLD	C	As sent in IE998 (TR0002) but not checked or recorded by CHIEF.
IdeOfMeaOfTraAtDHEA78LNG	TRPT-ID-INLD-LNG	O	(TR0099) Not checked or recorded by CHIEF.

## DES243: TIS – Interface Between CHIEF and ECN+

TotNumOfIteHEA305	ignored	R	The goods item details are removed by the Common Core Components.
TotNumOfPacHEA306	TOT-PKGS	C	Not sent in IE998 (TR0002) but not checked or recorded by CHIEF.
TotGroMasHEA307	ENT-GROSS-MASS	C	As sent in IE998 (TR0002, TR0021) but not checked or recorded by CHIEF.
<b>-CUSOFFEXPERT</b>		<b>R</b>	
RefNumERT1	EXPORT-OFFICE	R	Not checked or recorded by CHIEF.
<b>-ACEACE</b>		<b>R</b>	
RefNumACE1	ACTUAL-EXIT-OFF	R	Actual Office of Exit from the EU.
<b>-CONRESEXR</b>		<b>R</b>	
ConDatEXR14	EXIT-DT	O	The date when the goods exited from the EU if the goods have exited (R865). EXIT-CNTRL-RES should not be "B1" but this is not checked.
ConResCodEXR16	EXIT-CNTRL-RES	R	(Note, rule TR0051 does not apply to the message received by CHIEF, because it refers to data elements that are removed by HMRC from the message before it is sent to CHIEF.)
ExtStoDatEXR68	EXIT-STOPPED-DT	O	The date when the goods were stopped if they were not allowed to exit (R865). EXIT-CNTRL-RES should be "B1" but this is not checked.
StaOfTheSeaOKEXR70	SEALS-STATE	O	When seals are identified in IE998 (R325) but this is not checked by CHIEF.

Table 2. IE518A Data Mapping

## 4.2 IE518A Document Type Definition

This is the DTD for the IE518A taken from the DDNXA (Reference [6]) with the elements for the data that is not sent to CHIEF removed.

```

<!ELEMENT CD518A (SynIdeMES1, SynVerNumMES2, MesSenMES3, SenIdeCodQuaMES4?, MesRecMES6,
  RecIdeCodQuaMES7?, DatOfPreMES9, TimOfPreMES10, IntConRefMES11, RecRefMES12?, RecRefQuaMES13?,
  AppRefMES14?, PriMES15?, AckReqMES16?, ComAgrIdMES17?, TesIndMES18?, MesIdeMES19, MesTypMES20,
  ComAccRefMES21?, HEAHEA, CUSOFFEXPERT, ACEACE, CONRESEXR)> <!-- Node: HEADER -->
<!ELEMENT HEAHEA (DocNumHEA5, IdeOfMeaOfTraAtDHEA78?, IdeOfMeaOfTraAtDHEA78LNG?, TotNumOfIteHEA305,
  TotNumOfPacHEA306?, TotGroMasHEA307?)>
<!-- Node: (EXPORT) CUSTOMS OFFICE -->
<!ELEMENT CUSOFFEXPERT (RefNumERT1)>
<!-- Node: (ACTUAL EXIT) CUSTOMS OFFICE -->
<!ELEMENT ACEACE (RefNumACE1)>
<!-- Node: EXIT CONTROL RESULT -->
<!ELEMENT CONRESEXR (ConDatEXR14?, ConResCodEXR16, ExtStoDatEXR68?, StaOfTheSeaOKEXR70?)>
<!--Leaf: Syntax identifier -->
<!ELEMENT SynIdeMES1 (#PCDATA)>
<!--Leaf: Syntax version number -->
<!ELEMENT SynVerNumMES2 (#PCDATA)>
<!--Leaf: Message sender -->
<!ELEMENT MesSenMES3 (#PCDATA)>
<!--Leaf: Sender identification code qualifier -->
<!ELEMENT SenIdeCodQuaMES4 (#PCDATA)>
<!--Leaf: Message recipient -->
<!ELEMENT MesRecMES6 (#PCDATA)>
<!--Leaf: Recipient identification code qualifier -->
<!ELEMENT RecIdeCodQuaMES7 (#PCDATA)>
<!--Leaf: Date of preparation -->
<!ELEMENT DatOfPreMES9 (#PCDATA)>
<!--Leaf: Time of preparation -->
<!ELEMENT TimOfPreMES10 (#PCDATA)>
<!--Leaf: Interchange control reference -->
<!ELEMENT IntConRefMES11 (#PCDATA)>
<!--Leaf: Recipient's reference/password -->
<!ELEMENT RecRefMES12 (#PCDATA)>
<!--Leaf: Recipient's reference/password qualifier -->
<!ELEMENT RecRefQuaMES13 (#PCDATA)>

```



## DES243: TIS – Interface Between CHIEF and ECN+

```
<!--Leaf: Application reference -->
<!ELEMENT AppRefMES14 (#PCDATA)>
<!--Leaf: Priority -->
<!ELEMENT PriMES15 (#PCDATA)>
<!--Leaf: Acknowledgement request -->
<!ELEMENT AckReqMES16 (#PCDATA)>
<!--Leaf: Communications agreement id -->
<!ELEMENT ComAgrIdMES17 (#PCDATA)>
<!--Leaf: Test indicator -->
<!ELEMENT TesIndMES18 (#PCDATA)>
<!--Leaf: Message identification -->
<!ELEMENT MesIdeMES19 (#PCDATA)>
<!--Leaf: Message type -->
<!ELEMENT MesTypMES20 (#PCDATA)>
<!--Leaf: Common access reference -->
<!ELEMENT ComAccRefMES21 (#PCDATA)>
<!--Leaf: Document/reference number -->
<!ELEMENT DocNumHEA5 (#PCDATA)>
<!--Leaf: Identity of means of transport at departure (exp/trans) -->
<!ELEMENT IdeOfMeaOfTraAtDHEA78 (#PCDATA)>
<!--Leaf: Identity of means of transport at departure LNG -->
<!ELEMENT IdeOfMeaOfTraAtDHEA78LNG (#PCDATA)>
<!--Leaf: Total number of items -->
<!ELEMENT TotNumOfIteHEA305 (#PCDATA)>
<!--Leaf: Total number of packages -->
<!ELEMENT TotNumOfPacHEA306 (#PCDATA)>
<!--Leaf: Total gross mass -->
<!ELEMENT TotGroMasHEA307 (#PCDATA)>
<!--Leaf: Reference number -->
<!ELEMENT RefNumERT1 (#PCDATA)>
<!--Leaf: Reference number -->
<!ELEMENT RefNumACE1 (#PCDATA)>
<!--Leaf: Exit date -->
<!ELEMENT ConDatEXR14 (#PCDATA)>
<!--Leaf: Control result code -->
<!ELEMENT ConResCodEXR16 (#PCDATA)>
<!--Leaf: Exit stopped date -->
<!ELEMENT ExtStoDatEXR68 (#PCDATA)>
<!--Leaf: State of seals ok -->
<!ELEMENT StaOfTheSeaOKEXR70 (#PCDATA)>
```

**DES243: TIS – Interface Between CHIEF and ECN+****4.3 Example IE518**

For illustrative purposes the following XML text shows all elements that are received by CHIEF. It is not itself a valid message.

```

<CD518A>
  <SynIdeMES1>UNOC</SynIdeMES1>
  <SynVerNumMES2>3</SynVerNumMES2>
  <MesSenMES3>NECA.GB</MesSenMES3>
  <MesRecMES6>NES.GB</MesRecMES6>
  <DatOfPreMES9>081123</DatOfPreMES9>
  <TimOfPreMES10>1215</TimOfPreMES10>
  <IntConRefMES11> 09119097374506</IntConRefMES11>
  <MesIdeMES19> 09119097374506</MesIdeMES19>
  <MesTypMES20>CD518A</MesTypMES20>
  <HEAHEA>
    <DocNumHEA5>08GB11X01234567010</DocNumHEA5>
    <IdeOfMeaOfTraAtDHEA78>BIG LORRY</IdeOfMeaOfTraAtDHEA78>
    <IdeOfMeaOfTraAtDHEA78LNG>EN</IdeOfMeaOfTraAtDHEA78LNG>
    <TotNumOfIteHEA305>2</TotNumOfIteHEA305>
    <TotNumOfPacHEA306>6</TotNumOfPacHEA306>
    <TotGroMasHEA307>12.345</TotGroMasHEA307>
  </HEAHEA>
  <CUSOFFEXPERT>
    <RefNumERT1>GB000120</RefNumERT1>
  </CUSOFFEXPERT>
  <ACEACE>
    <RefNumACE1>FR123456</RefNumACE1>
  </ACEACE>
  <CONRESEXR>
    <ConDatEXR14>20081130</ConDatEXR14>
    <ConResCodEXR16>A1</ConResCodEXR16>
    <ExtStoDatEXR68>20081130</ExtStoDatEXR68>
    <StaOfTheSeaOKEXR70>1</StaOfTheSeaOKEXR70>
  </CONRESEXR>
</CD518A>

```

END OF SECTION 4

## DES243: TIS – Interface Between CHIEF and ECN+

## 5. IE510A (Cancellation Notification) Message Structure

This message is sent from CHIEF to ECN+ when an MRN is cancelled within CHIEF, as a result of amendment, cancellation or termination of the declaration after an IE998 has been sent. The message is not sent when responsibility for the entry is transferred to MSS (ICS “06”) 6 months after legal acceptance.

### 5.1 CHIEF Mapping

Table 3 gives the mapping between the XML elements in the IE510 message and the CHIEF Data items.

The requirement for data to be in the message and the maximum occurrences is indicated in the ‘Pres’ (presence) column as follows:

- R Required;
- O Optional;
- C Conditional;
- (n) the maximum number of occurrences (n) when more than one.

The values in the table below are as defined in the EU specification (see References [4] and [5]).

The conditions (Cnnn) and rules (Rnnn, TRnnn) from the EU specification are identified in the ‘Comments’ column with notes identifying how they are satisfied by CHIEF.

XML Element	CHIEF Data Element / literal value	Pres	Comments
<b>CD510A</b>		<b>R</b>	
SynIdeMES1	“UNOC”	R	
SynVerNumMES2	“3”	R	
MesSenMES3	“NES.GB”	R	
SenIdeCodQuaMES4		O	not used
MesRecMES6	“NECA.GB”	R	
RecldeCodQuaMES7		O	not used
DatOfPreMES9	SYS-DATE	R	
TimOfPreMES10	SYS-TIME	R	
IntConRefMES11	SYSMRN	R	Unique reference for the message. CHIEF uses a variant of the date-time – in units of 100 microseconds since 00:00 01/01/1980.
RecRefMES12		O	not used
RecRefQuaMES13		O	not used
AppRefMES14		O	not used
PriMES15		O	not used
AckReqMES16		O	not used
ComAgrIdMES17		O	not used
TesIndMES18		O	not used
MesIdeMES19	SYSMRN	R	
MesTypMES20	“CD510A”	R	
ComAccRefMES21		O	not used
<b>-HEAHEA</b>		<b>R</b>	
DocNumHEA5	MRN	R	The MRN of the version that is cancelled.
DatOfCanHEA145	CANCEL-DT	R	The system date on which the CHIEF transaction, which caused the MRN to be cancelled, occurred.
<b>-CUSOFFEXPERT</b>		<b>R</b>	
RefNumERT1	EXPORT-OFFICE	R	As sent on the version being cancelled.
<b>-CUSOFFEXTDECEDC</b>		<b>R</b>	
RefNumEDC11	EXIT-OFFICE	R	As sent on the version being cancelled.

Table 3. IE510A Data Mapping

**DES243: TIS – Interface Between CHIEF and ECN+****5.2 IE510A Document Type Definition**

This is the DTD for the IE510A taken from the DDNXA (Reference [6]). It is repeated here so that there is a single point of reference in this document for all the information for the interface.

```

<!-- Node: MESSAGE -->
<!ELEMENT CD510A (SynIdeMES1, SynVerNumMES2, MesSenMES3, SenIdeCodQuaMES4?, MesRecMES6,
RecIdeCodQuaMES7?, DatOfPreMES9, TimOfPreMES10, IntConRefMES11, RecRefMES12?,
RecRefQuaMES13?, AppRefMES14?, PriMES15?, AckReqMES16?, ComAgrIdMES17?, TesIndMES18?,
MesIdeMES19, MesTypMES20, ComAccRefMES21?, HEAHEA, CUSOFFEXPERT, CUSOFFEXTDECEDC)>
<!-- Node: HEADER -->
<!ELEMENT HEAHEA (DocNumHEA5, DatOfCanHEA145)>
<!-- Node: (EXPORT) CUSTOMS OFFICE -->
<!ELEMENT CUSOFFEXPERT (RefNumERT1)>
<!-- Node: (EXIT DECLARED) CUSTOMS OFFICE -->
<!ELEMENT CUSOFFEXTDECEDC (RefNumEDC11)>
<!--Leaf: Syntax identifier -->
<!ELEMENT SynIdeMES1 (#PCDATA)>
<!--Leaf: Syntax version number -->
<!ELEMENT SynVerNumMES2 (#PCDATA)>
<!--Leaf: Message sender -->
<!ELEMENT MesSenMES3 (#PCDATA)>
<!--Leaf: Sender identification code qualifier -->
<!ELEMENT SenIdeCodQuaMES4 (#PCDATA)>
<!--Leaf: Message recipient -->
<!ELEMENT MesRecMES6 (#PCDATA)>
<!--Leaf: Recipient identification code qualifier -->
<!ELEMENT RecIdeCodQuaMES7 (#PCDATA)>
<!--Leaf: Date of preparation -->
<!ELEMENT DatOfPreMES9 (#PCDATA)>
<!--Leaf: Time of preparation -->
<!ELEMENT TimOfPreMES10 (#PCDATA)>
<!--Leaf: Interchange control reference -->
<!ELEMENT IntConRefMES11 (#PCDATA)>
<!--Leaf: Recipient's reference/password -->
<!ELEMENT RecRefMES12 (#PCDATA)>
<!--Leaf: Recipient's reference/password qualifier -->
<!ELEMENT RecRefQuaMES13 (#PCDATA)>
<!--Leaf: Application reference -->
<!ELEMENT AppRefMES14 (#PCDATA)>
<!--Leaf: Priority -->
<!ELEMENT PriMES15 (#PCDATA)>
<!--Leaf: Acknowledgement request -->
<!ELEMENT AckReqMES16 (#PCDATA)>
<!--Leaf: Communications agreement id -->
<!ELEMENT ComAgrIdMES17 (#PCDATA)>
<!--Leaf: Test indicator -->
<!ELEMENT TesIndMES18 (#PCDATA)>
<!--Leaf: Message identification -->
<!ELEMENT MesIdeMES19 (#PCDATA)>
<!--Leaf: Message type -->
<!ELEMENT MesTypMES20 (#PCDATA)>
<!--Leaf: Common access reference -->
<!ELEMENT ComAccRefMES21 (#PCDATA)>
<!--Leaf: Document/reference number -->
<!ELEMENT DocNumHEA5 (#PCDATA)>
<!--Leaf: Date of cancellation -->
<!ELEMENT DatOfCanHEA145 (#PCDATA)>
<!--Leaf: Reference number -->
<!ELEMENT RefNumERT1 (#PCDATA)>
<!--Leaf: Reference number -->
<!ELEMENT RefNumEDC11 (#PCDATA)>

```

**DES243: TIS – Interface Between CHIEF and ECN+****5.3 Example IE510**

```

<CD510A>
  <SynIdeMES1>UNOC</SynIdeMES1>
  <SynVerNumMES2>3</SynVerNumMES2>
  <MesSenMES3>NES.GB</MesSenMES3>
  <MesRecMES6>NECA.GB</MesRecMES6>
  <DatOfPreMES9>081123</DatOfPreMES9>
  <TimOfPreMES10>1215</TimOfPreMES10>
  <IntConRefMES11> 09119097374506</IntConRefMES11>
  <MesIdeMES19> 09119097374506</MesIdeMES19>
  <MesTypMES20>CD510A</MesTypMES20>
  <HEAHEA>
    <DocNumHEA5>08GB11X01234567010</DocNumHEA5>
    <DatOfCanHEA145>20081124</DatOfCanHEA145>
  </HEAHEA>
  <CUSOFFEXPERT>
    <RefNumERT1>GB000120</RefNumERT1>
  </CUSOFFEXPERT>
  <CUSOFFEXTDECEDC>
    <RefNumEDC11>FR001234</RefNumEDC11>
  </CUSOFFEXTDECEDC>
</CD510A>

```

END OF SECTION 5

## DES243: TIS – Interface Between CHIEF and ECN+

## 6. Data Elements

This TIS (in common with other TISs) uses Data Elements defined for the trade interface in the successors of DES 238 (Reference [3]). This TIS also uses some additional Data Elements not currently defined in the successors of DES 238 which are defined in [Table 4](#) below.

Data Element	BOX (EU Code List)	Format	Description
ACTUAL-EXIT-OFF		AN8	The Actual Office of Exit as identified on the Exit Results message.
CANCEL-DT		N8	Date when the MRN was cancelled.
CNTR-CODE	27	N1	Identifies when the goods are in a container. The value is "0" (not in a container) or "1" (in a container).
CPC-REQ	37	N2	The requested procedure (CPC characters 1 and 2).
CPC-PREV	37	N2	The previous procedure (CPC characters 3 and 4).
CPC-PROC	37	A1N2	Commodity or national procedure (CPC characters 5, 6 and 7)
DECLN-TYPE-ZONE	1	A2	The first 2 characters of DECLN-TYPE.
EAD-LNG		A2	The EAD language code for UK exports is set to "EN" by CHIEF.
ENT-GROSS-MASS		n..14(11.3)	Sum of the gross masses declared for substantive items.
EXIT-CNTRL-RES	(47)	AN2	Exit Control Result codes are: A1 Satisfactory A2 Considered Satisfactory A4 Minor irregularities B1 Not satisfactory
EXIT-DT		N8	Date (ccyyymmdd) when the goods exited from the Office of Exit.
EXIT-STOPPED-DT		N8	Date (ccyyymmdd) when the export was stopped at the Office of Exit
EXPORT-CNTRL-RES	(47)	AN2	Export Control Result codes are: A1 Satisfactory – Full Declaration manually cleared p2p (ICS 51); A2 Considered Satisfactory – Full Declaration automatically cleared (ICS 50); A3 Authorised Trader – PSA (i.e. Box 2 sub-division 2 is "C" or "F").
EXPORT-OFFICE	30	AN8	The EU code for the Office of Export.
I-TRPT-CHGE-MOP		A1	The transport charges method of payment as declared for an item. It must not be declared for an item if one is declared at header level. The same value must not be declared for all items.
LATEST-ARR-DT		N8	The date (ccyyymmdd) by which the goods should have arrived at the Office of Exit.
PIECES-COUNT	31	n..5	Package count when the kind of package identifies that the goods are "in pieces".
RSK-ITEM-NO		n..3	The number of the item in the IE998B message to which the risk relates.
RSK-RES-CODE		AN5	The Risk Analysis result code
RSK-RES-TXT		t..71	The text entered by the Officer when a pre-clearance Customs Check is notified to CHIEF as completed. The two lines of 35 characters that can be input are concatenated with a single space following the text entered in the first line. The EU messages allow 350 characters but a change to CHIEF to support more text is not currently required by HMRC..
RSK-RES-TXT-LNG		A2	The language of the text is set to "EN".
SEAL-COUNT		n..4	The number of seals.
SEALS-STATE	(27)	N1	Indicates the state of the seals: 0 – not ok; 1 – ok.
SP-CIRCUM-IND		A1	A Specific Circumstance is claimed with a header level AI Code: "SPCIA" – Postal and Express consignments "SPCIB" – Ship and Aircraft supplies. [Specific Circumstance 'B' is no longer used, and 'SPCIB' no longer valid]; "SPCIE" – AEO. The Indicator is set to the last character of the AI Code.

Table 4. Additional Data Element Definitions



**DES243: TIS – Interface Between CHIEF and ECN+**

---

END OF SECTION 6

**7. Glossary and References****7.1 Glossary**

See STD 003 – GLOSSARY AND AUTHORISED ABBREVIATIONS

AEO	Authorised Economic Operator
DTD	Document Type Definition (an XML schema language, specification can be found at <a href="http://w3c.org">w3c.org</a> )
EAD	Export Accompanying Document
ECN+	EDI/CSI Node Plus
ECS	Export Control System
EORI	Economic Operator Registration and Identification
EXS	Exit Summary Declaration
IE510	EU-defined Cancellation Notification message
IE518	EU-defined Exit Results message
IE998	EU-defined Anticipated Export Record message
KEL	Known Error List
NECA	National Export Control Application (for the UK this is ECN+)
NES	National Export System (for the UK this is CHIEF)
XML	Extensible Markup Language

## DES243: TIS – Interface Between CHIEF and ECN+

## 7.2 References

Ref No.	Title	Document reference
1.	TRANSIT SYSTEM SPECIFICATION – AES ADDENDUM 1/2006 –CORR.2008 (DATED 22/07/2008) INCLUDING APPENDIX A3 AND B1	TSS-FSF-REL4
2.	EDCS CHIEF INTERFACE AGREEMENT	CIA 005
3.	TIS : EDI FOR THE EU HARMONISED SAD (Note that DES 238 is no longer maintained. Its contents have been moved to documents – DES 150, DES 205, DES 208, DES 209 & DES 222).	DES 238
4.	SYSTEM-REQUIREMENTS-DEFINITION FOR ECN+  SRD-ECNPLUS-SYSTEM_REQUIREMENTS-DEFINITION-V1.60-EN  <b>with IE998B DTD replaced by KEL Call INC0711.100740 with XML tag changes as proposed in KEL Call INC0801.102407</b>	SRD-ECNPLUS
5.	DDNXA FOR ECS PHASE 2 VERSION 2.00-EN APPENDIX Q2 DATED 24/09/2007  <b>Until the DDNXA is updated the details are in Reference [1] with XML tag changes as proposed in KEL Call INC0801.102407</b>	CUD-SC01-DDNXA_-ECS_P2
6.	DDNXA FOR ECS PHASE 2 VERSION 2.00-EN APPENDIX T DATED 24/09/2007	CUD-SC01-DDNXA_-ECS_P2

END OF SECTION 7



**DES243: TIS – Interface Between CHIEF and ECN+**

---

**APPENDICES**



**DES243: TIS – Interface Between CHIEF and ECN+**

---

<b>Reviewer</b>	<b>Role</b>
Bernadette Holden	BT Change
Glen Robe	BT Change
CSG	CHIEF Support Group

END OF DOCUMENT

**Statement of Confidentiality**

© HM Revenue &amp; Customs 2016.

All rights reserved.