

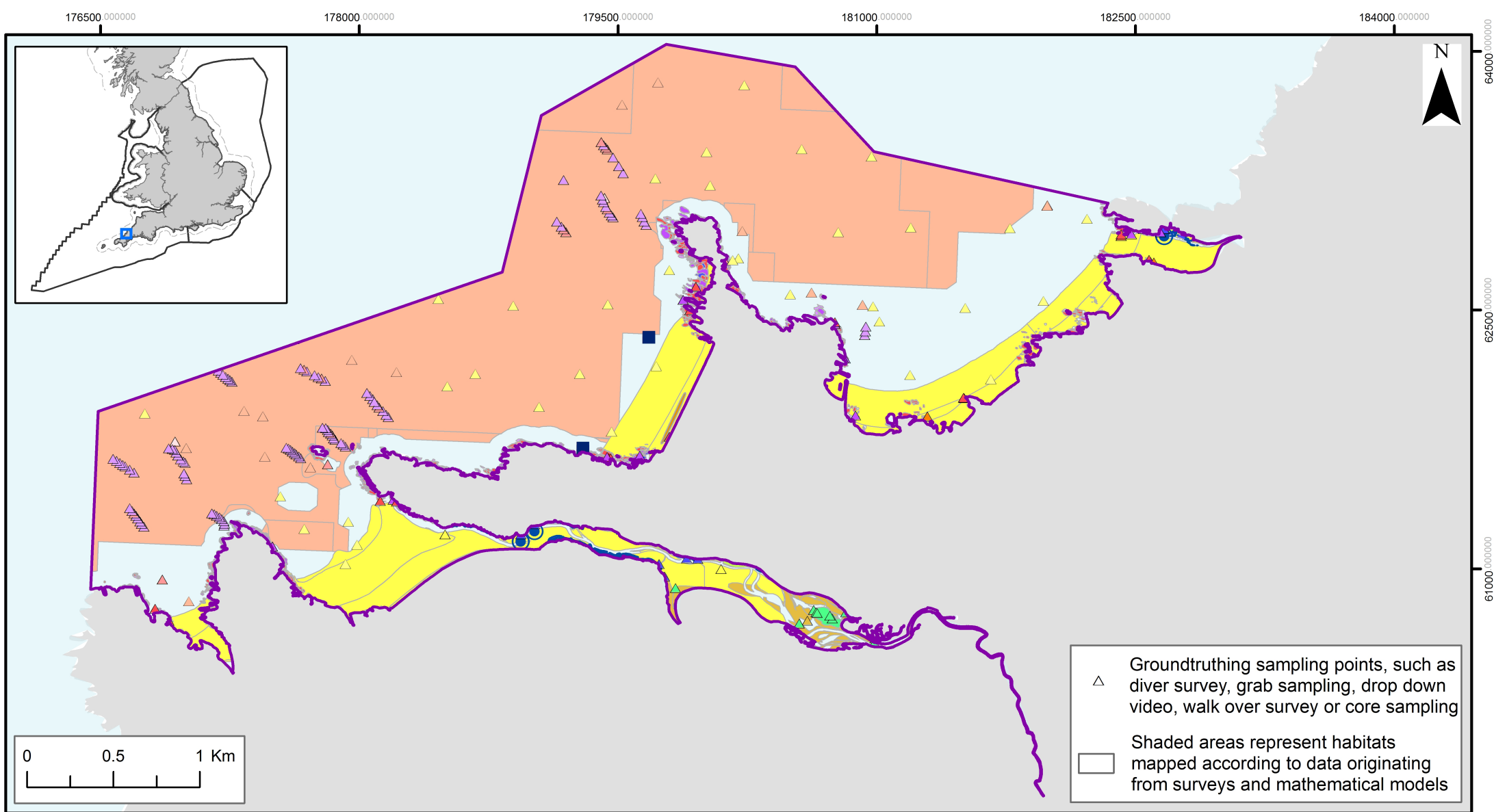
**Department for Environment, Food and Rural Affairs**

## **Newquay and the Gannel MCZ**

### **Feature Map**

**17 January 2016**

The following map shows where the features protected by this Marine Conservation Zone (MCZ) are located. A range of different types of surveys have been used to create this map. More detailed information on the techniques used and the features themselves can be found here: <http://nepubprod.appspot.com/publication/4594304593952768>



## Newquay and the Gannel MCZ

- Marine Conservation Zone
- Regional MCZ Project Area
- 12nM Territorial Seas Limit
- Sea
- Land

## Features designated in 2016

- |  |  |
|--|--|
| Giant goby ( <i>Gobius cobitis</i> )             | Intertidal mud (A2.3)                          |
| Estuarine rocky habitats                         | Intertidal mixed sediments (A2.4)              |
| Estuarine rocky habitats                         | Coastal saltmarshes and saline reedbeds (A2.5) |
| High energy intertidal rock (A1.1)               | High energy infralittoral rock (A3.1)          |
| High/Moderate energy intertidal rock (A1.1/A1.2) | Moderate energy infralittoral rock (A3.2)      |
| Moderate energy intertidal rock (A1.2)           | High energy circalittoral rock (A4.1)          |
| Low energy intertidal rock (A1.3)                | Subtidal coarse sediment (A5.1)                |
| Intertidal coarse sediment (A2.1)                | Subtidal sand (A5.2)                           |
| Intertidal sand and muddy sand (A2.2)            |  |

Contains information from the Ordnance Survey © Crown Copyright and database right 2015. Ordnance Survey 100022021. UKHO Data © British Crown Copyright. All rights reserved. Permission Number Defra012015.001. This product has been derived in part from material obtained from the UK Hydrographic Office with the permission of the Controller of Her Majesty's Stationery Office and UK Hydrographic Office ([www.ukho.gov.uk](http://www.ukho.gov.uk)). Map produced by Natural England 2015. Reference: Theme ID: 1477658 Map Projection: British National Grid



© Crown copyright 2016

You may re-use this information (excluding logos) free of charge in any format or medium, under the terms of the Open Government Licence v.3. To view this licence visit [www.nationalarchives.gov.uk/doc/open-government-licence/version/3/](http://www.nationalarchives.gov.uk/doc/open-government-licence/version/3/) or email [PSI@nationalarchives.gsi.gov.uk](mailto:PSI@nationalarchives.gsi.gov.uk)

This publication is available at [www.gov.uk/government/publications](http://www.gov.uk/government/publications)

Any enquiries regarding this publication should be sent to us at

[mcz@defra.gsi.gov.uk](mailto:mcz@defra.gsi.gov.uk)

PB 14409